



E5195 V1
October 2009

MS226H/MS227N Series LCD Monitor

User Guide

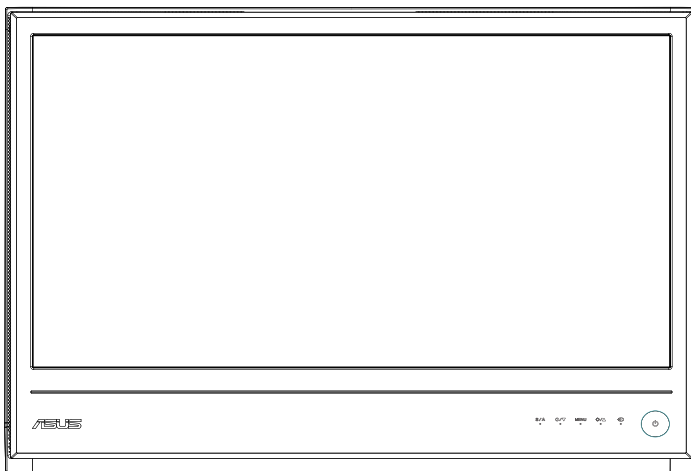


Table of contents

Notices	iii
Safety information	iv
Care & Cleaning	v
Chapter 1: Product introduction	
1.1 Welcome!	1-1
1.2 Package contents.....	1-1
1.3 Assembling the monitor base.....	1-2
1.5 Monitor introduction	1-4
1.5.1 Front of the LCD monitor	1-4
1.5.2 Rear of the LCD monitor	1-5
Chapter 2: Setup	
2.1 Adjusting the monitor.....	2-1
Chapter 3: General Instruction	
3.1 OSD (On-Screen Display) menu	3-1
3.1.1 How to reconfigure.....	3-1
3.1.2 OSD Function Introduction.....	3-1
3.2 Specifications summary.....	3-4
3.3 Troubleshooting (FAQ)	3-5
3.4 Supported operating modes	3-6
3.5 HDMI Supported Primary Timings.....	3-7

Copyright © 2009 ASUSTeK COMPUTER INC. All Rights Reserved.

No part of this manual, including the products and software described in it, may be reproduced, transmitted, transcribed, stored in a retrieval system, or translated into any language in any form or by any means, except documentation kept by the purchaser for backup purposes, without the express written permission of ASUSTeK COMPUTER INC. ("ASUS").

Product warranty or service will not be extended if: (1) the product is repaired, modified or altered, unless such repair, modification of alteration is authorized in writing by ASUS; or (2) the serial number of the product is defaced or missing.

ASUS PROVIDES THIS MANUAL "AS IS" WITHOUT WARRANTY OF ANY KIND, EITHER EXPRESS OR IMPLIED, INCLUDING BUT NOT LIMITED TO THE IMPLIED WARRANTIES OR CONDITIONS OF MERCHANTABILITY OR FITNESS FOR A PARTICULAR PURPOSE. IN NO EVENT SHALL ASUS, ITS DIRECTORS, OFFICERS, EMPLOYEES OR AGENTS BE LIABLE FOR ANY INDIRECT, SPECIAL, INCIDENTAL, OR CONSEQUENTIAL DAMAGES (INCLUDING DAMAGES FOR LOSS OF PROFITS, LOSS OF BUSINESS, LOSS OF USE OR DATA, INTERRUPTION OF BUSINESS AND THE LIKE), EVEN IF ASUS HAS BEEN ADVISED OF THE POSSIBILITY OF SUCH DAMAGES ARISING FROM ANY DEFECT OR ERROR IN THIS MANUAL OR PRODUCT.

SPECIFICATIONS AND INFORMATION CONTAINED IN THIS MANUAL ARE FURNISHED FOR INFORMATIONAL USE ONLY, AND ARE SUBJECT TO CHANGE AT ANY TIME WITHOUT NOTICE, AND SHOULD NOT BE CONSTRUED AS A COMMITMENT BY ASUS. ASUS ASSUMES NO RESPONSIBILITY OR LIABILITY FOR ANY ERRORS OR INACCURACIES THAT MAY APPEAR IN THIS MANUAL, INCLUDING THE PRODUCTS AND SOFTWARE DESCRIBED IN IT.

Products and corporate names appearing in this manual may or may not be registered trademarks or copyrights of their respective companies, and are used only for identification or explanation and to the owners' benefit, without intent to infringe.

Notices

Federal Communications Commission Statement

This device complies with Part 15 of the FCC Rules. Operation is subject to the following two conditions:

- This device may not cause harmful interference, and
- This device must accept any interference received including interference that may cause undesired operation.

This equipment has been tested and found to comply with the limits for a Class B digital device, pursuant to Part 15 of the FCC Rules. These limits are designed to provide reasonable protection against harmful interference in a residential installation. This equipment generates, uses and can radiate radio frequency energy and, if not installed and used in accordance with manufacturer's instructions, may cause harmful interference to radio communications. However, there is no guarantee that interference will not occur in a particular installation. If this equipment does cause harmful interference to radio or television reception, which can be determined by turning the equipment off and on, the user is encouraged to try to correct the interference by one or more of the following measures:

- Reorient or relocate the receiving antenna.
- Increase the separation between the equipment and receiver.
- Connect the equipment to an outlet on a circuit different from that to which the receiver is connected.
- Consult the dealer or an experienced radio/TV technician for help.



As an Energy Star® Partner, our company has determined that this product meets the Energy Star® guidelines for energy efficiency.

Canadian Department of Communications Statement

This digital apparatus does not exceed the Class B limits for radio noise emissions from digital apparatus set out in the Radio Interference Regulations of the Canadian Department of Communications.

This class B digital apparatus complies with Canadian ICES-003.

Safety information

- Before setting up the monitor, carefully read all the documentation that came with the package.
- To prevent fire or shock hazard, never expose the monitor to rain or moisture.
- Never try to open the monitor cabinet. The dangerous high voltages inside the monitor may result in serious physical injury.
- If the power supply is broken, do not try to fix it by yourself. Contact a qualified service technician or your retailer.
- Before using the product, make sure all cables are correctly connected and the power cables are not damaged. If you detect any damage, contact your dealer immediately.
- Slots and openings on the back or top of the cabinet are provided for ventilation. Do not block these slots. Never place this product near or over a radiator or heat source unless proper ventilation is provided.
- The monitor should be operated only from the type of power source indicated on the label. If you are not sure of the type of power supply to your home, consult your dealer or local power company.
- Use the appropriate power plug which complies with your local power standard.
- Do not overload power strips and extension cords. Overloading can result in fire or electric shock.
- Avoid dust, humidity, and temperature extremes. Do not place the monitor in any area where it may become wet. Place the monitor on a stable surface.
- Unplug the unit during a lightning storm or if it will not be used for a long period of time. This will protect the monitor from damage due to power surges.
- Never push objects or spill liquid of any kind into the slots on the monitor cabinet.
- To ensure satisfactory operation, use the monitor only with UL listed computers which have appropriate configured receptacles marked between 100-240V AC.
- If you encounter technical problems with the monitor, contact a qualified service technician or your retailer.

Care & Cleaning

- Before you lift or reposition your monitor, it is better to disconnect the cables and power cord. Follow the correct lifting techniques when positioning the monitor. When lifting or carrying the monitor, grasp the edges of the monitor. Do not lift the display by the stand or the cord.
- Cleaning. Turn your monitor off and unplug the power cord. Clean the monitor surface with a lint-free, non-abrasive cloth. Stubborn stains may be removed with a cloth dampened with mild cleaner.
- Avoid using a cleaner containing alcohol or acetone. Use a cleaner intended for use with the LCD. Never spray cleaner directly on the screen, as it may drip inside the monitor and cause an electric shock.

The following symptoms are normal with the monitor:

- The screen may flicker during the initial use due to the nature of the fluorescent light. Turn off the Power Switch and turn it on again to make sure that the flicker disappears.
- You may find slightly uneven brightness on the screen depending on the desktop pattern you use.
- When the same image is displayed for hours, an afterimage of the previous screen may remain after switching the image. The screen will recover slowly or you can turn off the Power Switch for hours.
- When the screen becomes black or flashes, or cannot work anymore, contact your dealer or service center to fix it. Do not repair the screen by yourself!

Conventions used in this guide



WARNING: Information to prevent injury to yourself when trying to complete a task.



CAUTION: Information to prevent damage to the components when trying to complete a task.



IMPORTANT: Information that you **MUST** follow to complete a task.



NOTE: Tips and additional information to aid in completing a task.

Where to find more information

Refer to the following sources for additional information and for product and software updates.

1. ASUS websites

The ASUS websites worldwide provide updated information on ASUS hardware and software products. Refer to <http://www.asus.com>

2. Optional documentation

Your product package may include optional documentation, such as warranty card, that may have been added by your dealer. These documents are not part of the standard package.

1.1 Welcome!

Thank you for purchasing the ASUS® MS226H/MS227N Series LCD monitor! The latest widescreen LCD monitor from ASUS provides a crisper, broader, and brighter display, plus a host of features that enhance your viewing experience. With these features, you can enjoy the convenience and delightful visual experience that the MS226H/MS227N Series brings you!

1.2 Package contents

Check your MS226H/MS227N Series LCD package for the following items:

- ✓ LCD monitor
- ✓ Monitor base
- ✓ Quick start guide
- ✓ Power cord
- ✓ VGA cable
- ✓ DVI cable (Only for MS227N)
- ✓ HDMI to DVI cable (Only for MS226H)
- ✓ Power adapter
- ✓ Warranty card



If any of the above items is damaged or missing, contact your retailer immediately.

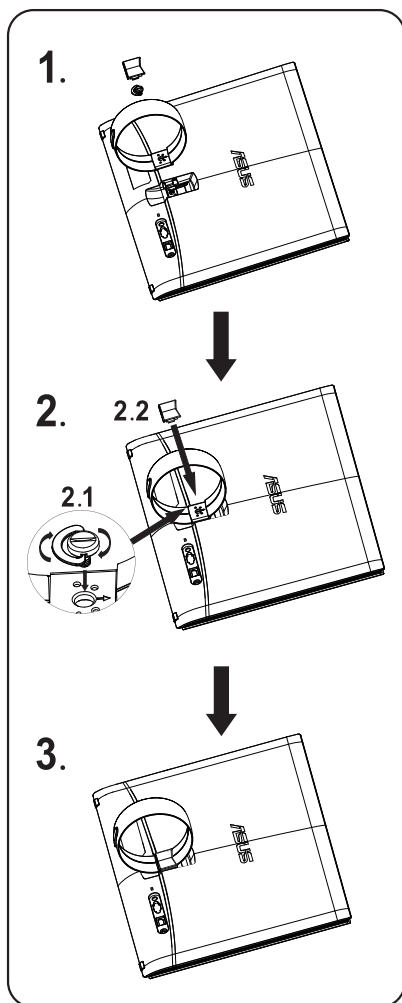
1.3 Assembling the monitor base

To assemble the monitor base:

- Attach the base to the monitor with bundled handy-screw correctly and then put on the screw cover.



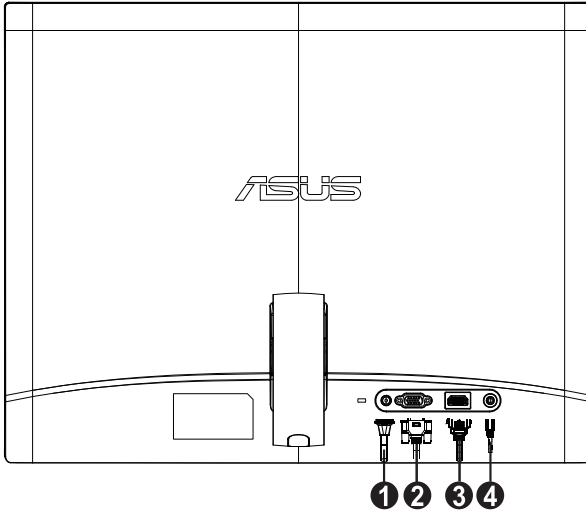
We recommend that you cover the table surface with soft cloth to prevent damage to the monitor.



1.4 Connect cables

Connect cables which you need

MS226H/MS227N

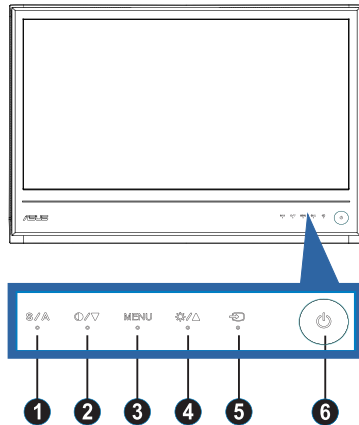


1	Power adapter
2	VGA cable
3	HDMI to DVI cable (For MS226H) or DVI cable (For MS227N)
4	Audio cable (For connecting a speaker to play MS226H HDMI audio)


1.5 Monitor introduction

1.5.1 Front of the LCD monitor

MS226H/MS227N



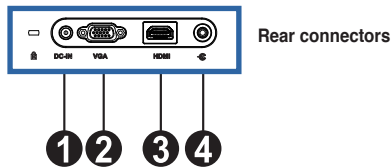
1. **S/A** button:
 - Automatically adjust the image to its optimized position, clock, and phase by long pressing this button for 2-4 seconds (for VGA mode only).
 - Use this hotkey to switch from five video preset modes (Game Mode, Night View Mode, Scenery Mode, Standard Mode, Theater Mode) with SPLENDID™ Video Intelligence Technology.
 - Exit the OSD menu or go back to the previous menu as the OSD menu is active.
2. **D/V** Button:
 - Press this button to decrease the value of the function selected or move to the next function.
 - This is also a hotkey for Contrast Ratio adjustment.
3. MENU Button:
 - Activate OSD menu
 - Press this button to enter/select the icon (function) highlighted while the OSD menu is activated.
4. **S/A** Button:
 - Press this button to increase the value of the function selected or move to the previous function.
 - This is also a hotkey for Brightness adjustment.
5. **Input Select** Button
 - Use this hotkey to switch between VGA and DVI/HDMI input signals. (DVI for MS227N; HDMI for MS226H)

6.  Power button / Power indicator
- Press this button to turn the monitor on/off.

Status	Description
White	ON
White (Blinking)	Standby mode
OFF	OFF

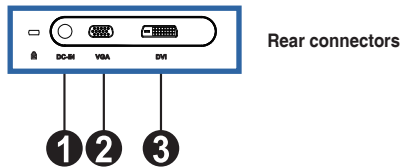
1.5.2 Rear of the LCD monitor

1.5.2.1 MS226H □□



1	DC-IN port
2	VGA port
3	HDMI-IN port
4	HDMI Audio - out port

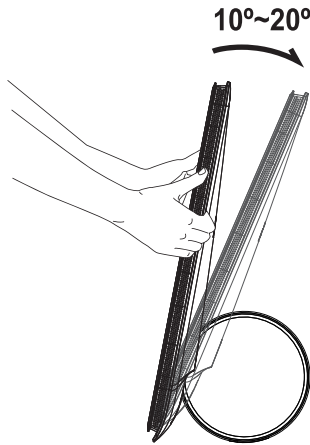
1.5.2.2 MS227N



1	DC-IN port
2	VGA port
3	DVI port

2.1 Adjusting the monitor

- Hold both right and left front frames to prevent the monitor from falling when you change its angle.
- You can adjust the monitor's angle from 10° to 20°.



3.1 OSD (On-Screen Display) menu

3.1.1 How to reconfigure

1. Press the MENU button to activate the OSD menu.



2. Press ▼ and ▲ to navigate through the functions. Highlight and activate the desired function by pressing the MENU button. If the function selected has a sub-menu, press ▼ and ▲ again to navigate through the sub-menu functions. Highlight and activate the desired sub-menu function by pressing the MENU button.
3. Press ▼ and ▲ to change the settings of the selected function.
4. To exit the OSD menu, press the **S** button. Repeat step 2 and step 3 to adjust any other function.

3.1.2 OSD Function Introduction

1. Splendid

This function contains five sub-functions you can select for your preference. Each mode has the Reset selection, allowing you to maintain your setting or return to the preset mode.



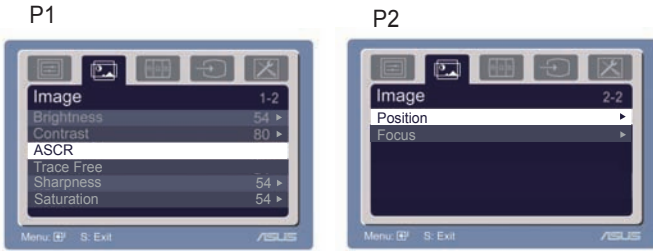
- **Scenery Mode:** best choice for scenery photo display with SPLENDID™ Video Intelligence Technology.
- **Standard Mode:** best choice for document editing with SPLENDID™ Video Intelligence Technology.
- **Theater Mode:** best choice for movie with SPLENDID™ Video Intelligence Technology.
- **Game Mode:** best choice for game playing with SPLENDID™ Video Intelligence Technology.
- **Night View Mode:** best choice for dark-scene game or movie with SPLENDID™ Video Intelligence Technology.



- In the Standard Mode, the **Saturation** and ASCR functions are not user-configurable.
- In the other modes, the **sRGB** function is not user-configurable.

2. Image

You can adjust brightness, contrast, ASCR, Trace Free, sharpness, saturation, position (VGA only), and focus (VGA only) from this main function.



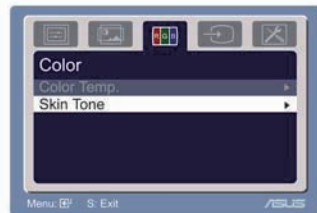
- Brightness: the adjusting range is from 0 to 100. ☀ is a hotkey to activate this function.
- Contrast: the adjusting range is from 0 to 100.
- ASCR: Select YES or NO to enable or disable dynamic contrast ratio function.
- Trace Free: To speed up the response time by Over drive technology. the adjusting range is from 0 to 100.
- Sharpness: the adjusting range is from 0 to 100.
- Saturation: the adjusting range is from 0 to 100.
- Position: adjusts the horizontal position (H-Position) and the vertical position (V-Position) of the image. The adjusting range is from 0 to 100.
- Focus: reduces Horizontal-line noise and Vertical-line noise of the image by adjusting (Phase) and (Clock) separately. The adjusting range is from 0 to 100.



- Phase adjusts the phase of the pixel clock signal. With a wrong phase adjustment, the screen shows horizontal disturbances.
- Clock (pixel frequency) controls the number of pixels scanned by one horizontal sweep. If the frequency is not correct, the screen shows vertical stripes and the image is not proportional.

3. Color

Select the image color you like from this function.



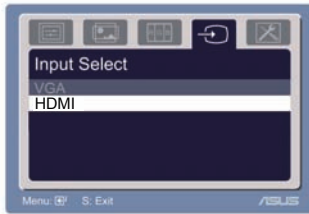
- Color Temp.: contains five color modes including Cool, Normal, Warm, sRGB, and User mode.
- Skin Tone: contains three color modes including Reddish, Natural, and Yellowish.



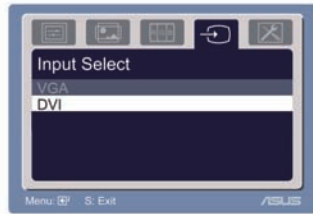
In the User mode, colors of R (Red), G (Green), and B (Blue) are user-configurable; the adjusting range is from 0-100.

4. Input Select

In this function, you could only select VGA and DVI or HDMI input source.



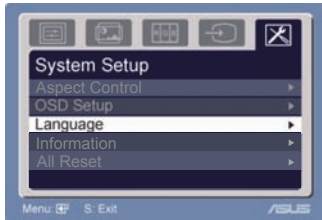
MS226H



MS227N

5. System Setup

Allow you to adjust the system.






- Aspect Control: adjusts the aspect ratio among "Full", "4:3", and "OverScan"(For MS226H HDMI mode only).
- OSD Setup: adjust the horizontal position (H-Position) and the vertical position (V-Position) of the OSD. The adjusting range is from 0 to 100. In the OSD Timeout selection, you can adjust the OSD timeout from 10 to 120 seconds.
- Language: there are eleven languages for your selection, including English, French, German, Spanish, Italian, Dutch, Russian, Traditional Chinese, Simplified Chinese, Japanese and Korean.
- Information: shows the monitor information.
- All Reset: "Yes" allows you to revert to the preset mode.

3.2 Specifications summary

Model	MS226H	MS227N
Panel Size	21.5"	22.0"
True Resolution	1920x1080	1680x1050
Brightness (Max.)	250cd/m ²	250cd/m ²
Intrinsic Contrast Ratio	1000:1	1000:1
ASUS Smart Contrast Ratio	50000:1	50000:1
Viewing Angle (CR \geq 10)	170°(H)/160°(V)	170°(H)/160°(V)
Color Saturation (NTSC)	72%	72%
Display Colors	16.7 M	16.7 M
Response Time	2ms(GTG)	2ms(GTG)
HDMI Input	Yes	-
DVI Input	-	DVI
VGA (D-Sub) Input	Yes	Yes
HDMI Audio-out	Yes	-
Power ON	<30W	<31W
Tilt	+10° ~ +20°	+10° ~ +20°
Phys. Dimension (WxHxD)	519.5x377.6x155.9 mm	517.1x405.0x155.8 mm
Box Dimension (WxHxD)	587x140x430 mm	579x140x466 mm
Net Weight (Esti.)	3.25 Kg	3.55 Kg
Gross Weight (Esti.)	5.25 Kg	5.55 Kg
Voltage Rating	100~240V	100~240V

*Specifications are subject to change without notice.

3.3 Troubleshooting (FAQ)

Problem	Possible Solution
Power LED is not ON	<ul style="list-style-type: none"> • Press the  button to check if the monitor is in the ON mode. • Check if the power cord is properly connected to the monitor and the power outlet.
The power LED is blinking and there is no screen image	<ul style="list-style-type: none"> • Check if the monitor and the computer are in the ON mode. • Make sure the signal cable is properly connected the monitor and the computer. • Inspect the signal cable and make sure none of the pins are bent. • Connect the computer with another available monitor to check if the computer is properly working.
Screen image is too light or dark	<ul style="list-style-type: none"> • Adjust the Contrast and Brightness settings via OSD.
Screen image is not centered or sized properly	<ul style="list-style-type: none"> • Press the  button for 2-4 seconds to automatically adjust the image(For VGA mode only). • Adjust the H-Position or V-Position settings via OSD(For VGA mode only).
Screen image bounces or a wave pattern is present in the image	<ul style="list-style-type: none"> • Make sure the signal cable is properly connected to the monitor and the computer. • Move electrical devices that may cause electrical interference.
Screen image has color defects (white does not look white)	<ul style="list-style-type: none"> • Inspect the signal cable and make sure that none of the pins are bent. • Perform "All Reset" via OSD. • Adjust the R/G/B color settings or select the Color Temperature via OSD.
Screen image is blurry or fuzzy	<ul style="list-style-type: none"> • Press the  button for 2-4 seconds to automatically adjust the image(For VGA mode only). • Adjust the H-Position or V-Position settings via OSD(For VGA mode only).

3.4 MS226H/MS227N Supported Timing List

VESA Modes, Factory Preset Timings

Resolution	Refresh Rate	Horizontal Frequency
640x480	60Hz	31.489kHz
640x480	67Hz	35kHz
640x480	72Hz	37.881kHz
640x480	75Hz	37.5kHz
640x350	70Hz	31.469kHz
720x400	70Hz	31.469kHz
800x600	56Hz	35.156kHz
800x600	60Hz	37.879kHz
800x600	72Hz	48.077kHz
800x600	75Hz	46.875kHz
832x624	75Hz	49.725kHz
848x480	60Hz	31.02kHz
1024x768	60Hz	48.363kHz
1024x768	70Hz	56.476kHz
1024x768	75Hz	60.023kHz
1024x768	75Hz	67.023kHz
1152x864	75Hz	67.5kHz
1280x720	60Hz	44.444/44.772kHz
1280x720	75Hz	56.456kHz
1280x768	60Hz	47.8kHz
1280x800	60Hz	49.306/49.702kHz
1280x800	75Hz	62.795kHz
1280x960	60Hz	60kHz
1280x1024	60Hz	63.981kHz
1280x1024	75Hz	79.976kHz
1360x768	60Hz	47.7kHz
1366x768	60Hz	47.7kHz
1440x900	60Hz	55.469/55.935kHz
1440x900	75Hz	70.635kHz
1600x900	60Hz	60kHz
1680x1050	60Hz	64.674/65.29kHz
1920x1080 (MS226H)	60Hz	66.587/67.5kHz
640x480P (MS226H/HDMI)	59.94/60Hz	31.469/31.5kHz
720x480P (MS226H/HDMI)	59.95/60Hz	31.469/31.5kHz
720x576P (MS226H/HDMI)	50Hz	31.25kHz
1280x720P (MS226H/HDMI)	50Hz	37.5kHz
1280x720P (MS226H/HDMI)	59.94/60Hz	44.955/45kHz
1920x1080i (MS226H/HDMI)	50Hz	28.125kHz
1920x1080i (MS226H/HDMI)	59.94/60Hz	33.716/33.75
1920x1080P (MS226H/HDMI)	50Hz	56.25kHz
1920x1080P (MS226H/HDMI)	59.94/60Hz	67.433/67.5kHz

* Modes not listed in the above tables may not be supported. For optimal resolution, we recommend that you choose a mode listed in the above tables

IBM Modes

Mode	Resolution	H(KHz)	V(Hz)	Pixel(MHz)
DOS	640x350	31.469	70	25.175
	720x400	31.469	70	28.322

MAC Modes

Mode	Resolution	H(KHz)	V(Hz)	Pixel(MHz)
VGA	640x480	35	67	30.24
SVGA	832x624	49.725	75	57.2832

* Modes not listed in the above tables may not be supported. For optimal resolution, we recommend that you choose a mode listed in the above tables