

Panasonic

Installation Manual

Additional Digital Cordless Handset

Model No. **KX-TGA930BX**



Thank you for purchasing a Panasonic digital cordless phone.

This unit is an additional handset compatible with the following series of Panasonic Digital Cordless Phones:
KX-TG9311/KX-TG9331/KX-TG9341/KX-TG9361
You must register this handset with your base unit before it can be used. This installation manual describes only the steps needed to register and begin using the handset. Please read the base unit's operating instructions for further details.

Charge the batteries for about 7 hours before initial use.

Please read this installation manual before using the unit and save it for future reference.

Supplied accessories

Accessory item/Part number	Quantity
Charger	1
AC adaptor for charger/PQLV209BX	1
Rechargeable batteries ^{*1}	2
Handset cover ^{*2}	1
Belt clip	1

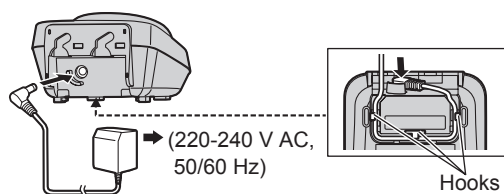
^{*1} Please read the base unit's operating instructions for replacement battery information.

^{*2} The handset cover comes attached to the handset.

Note:

- Please read the base unit's operating instructions for additional/ replacement accessories.

Connection



Note:

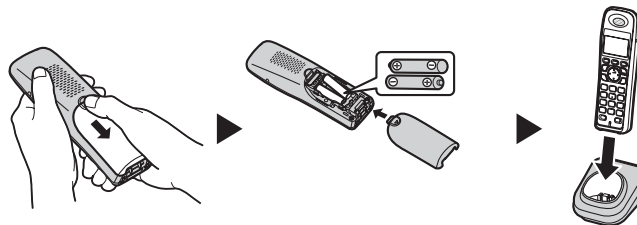
- Use only the supplied Panasonic AC adaptor PQLV209BX.
- The AC adaptor must remain connected at all times. (It is normal for the adaptor to feel warm during use.)

Battery installation and battery charge

Important:

- Use the supplied rechargeable batteries (Part No. HHR-65AAAB).
- When installing the batteries:
 - Wipe the battery ends (\oplus , \ominus) with a dry cloth.
 - Avoid touching the battery ends (\oplus , \ominus) or the unit contacts.
 - Ensure correct polarities (\oplus , \ominus).
- When replacing the batteries:
 - USE ONLY rechargeable Ni-MH batteries AAA (R03) size.
 - Do NOT use Alkaline/Manganese/Ni-Cd batteries.
 - We recommend using the Panasonic rechargeable batteries noted in the base unit's operating instructions for replacement battery information.

- 1 Press the notch on the handset cover firmly, and slide it in the direction of the arrow.
- 2 Insert the batteries negative (\ominus) end first. Close the handset cover.
- 3 Place the handset on the charger for about 7 hours before initial use.



Note:

- If the batteries are fully charged, but the operating time seems to be shorter, clean the battery ends (\oplus , \ominus) and the charge contacts with a dry cloth.

Registering a handset to a base unit

1 Base unit:

KX-TG9311/KX-TG9361

Press and hold **[LOCATOR]** for 4 seconds. (No registration tone)

KX-TG9331/KX-TG9341

Press and hold **[LOCATOR]** for 4 seconds until the registration tone sounds.

- If all registered handsets start ringing, press the same button to stop. Then repeat this step.
- The next step should be completed within 90 seconds.

2 Handset:

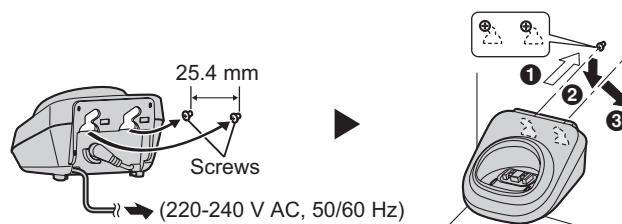
Press **[OK]**, then wait until a long beep sounds.

Note:

- While registering, “**Base registering**” is displayed on all registered handsets.
- If “**Error!!**” is displayed while registering, press **[OFF]** and register the handset again.

Wall mounting

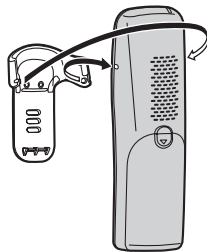
- 1 Drive the screws (not included) into the wall.
- 2 Mount the charger (1), then slide it down (2) and to the right (3) until it is secure.



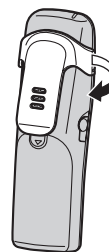
Belt clip

You can hang the handset on your belt or pocket using the supplied belt clip.

■ To attach the belt clip



■ To remove the belt clip



For your safety

To prevent severe injury and loss of life/property, read this section carefully before using the product to ensure proper and safe operation of your product.

WARNING

Power connection

- Completely insert the AC adaptor/power plug into the power outlet. Failure to do so may cause electric shock and/or excessive heat resulting in a fire.
- Regularly remove any dust, etc. from the AC adaptor/power plug by pulling it from the power outlet, then wiping with a dry cloth. Accumulated dust may cause an insulation defect from moisture, etc. resulting in a fire.
- Unplug the product from power outlets if it emits smoke, an abnormal smell, or makes an unusual noise. These conditions can cause fire or

electric shock. Confirm that smoke has stopped emitting and contact an authorized service center.

Installation

- To prevent the risk of fire or electrical shock, do not expose the product to rain or any type of moisture.
- Do not place or use this product near automatically controlled devices such as automatic doors and fire alarms. Radio waves emitted from this product may cause such devices to malfunction resulting in an accident.

CAUTION

Installation and relocation

- The AC adaptor is used as the main disconnect device. Ensure that the AC outlet is installed near the product and is easily accessible.

Battery

- We recommend using the supplied batteries or additional/replacement batteries noted in the base unit's operating instructions for replacement battery information. **USE ONLY rechargeable Ni-MH batteries AAA (R03) size.**
- Do not mix old and new batteries.
- Do not open or mutilate the batteries. Released electrolyte from the batteries is corrosive and may cause burns or injury to the eyes or skin. The electrolyte may be toxic if swallowed.
- Exercise care when handling the batteries. Do not allow conductive materials such as rings, bracelets or keys to touch the batteries, otherwise a short circuit may cause the batteries and/or the conductive material to overheat and cause burns.
- Charge the batteries provided with or identified for use with this product only, in accordance with the instructions and limitations specified in this manual.

- Only use a compatible base unit (or charger) to charge the batteries. Do not tamper with the base unit (or charger). Failure to follow these instructions may cause the batteries to swell or explode.

Other information

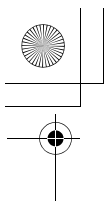
- Operating the product near electrical appliances may cause interference. Move away from the electrical appliances.
- Use only the power cord and batteries indicated in this manual. Do not dispose of batteries in a fire. They may explode. Check with local codes for possible special disposal instructions.

Routine care

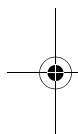
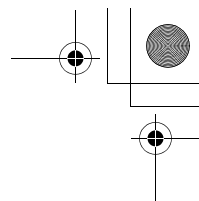
- **Wipe the outer surface of the product with a soft moist cloth.**
- Do not use benzine, thinner, or any abrasive powder.

Notice for product disposal, transfer, or return

- This product can store your private/confidential information. To protect your privacy/confidentiality, we recommend that you erase the information such as phonebook or caller list entries from the memory before you dispose of, transfer, or return the product.



TGA930BX(e).fm Page 8 Thursday, March 13, 2008 6:25 PM



Panasonic Communications Co., Ltd.

1-62, 4-chome, Minoshima, Hakata-ku, Fukuoka 812-8531, Japan

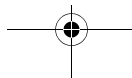
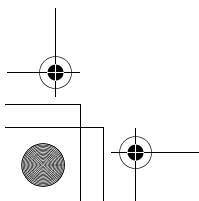
Copyright:

This material is copyrighted by Panasonic Communications Co., Ltd., and may be reproduced for internal use only. All other reproduction, in whole or in part, is prohibited without the written consent of Panasonic Communications Co., Ltd.

© 2008 Panasonic Communications Co., Ltd. All Rights Reserved.



TGA930BX



PNQX1252ZA DM0308PN0

