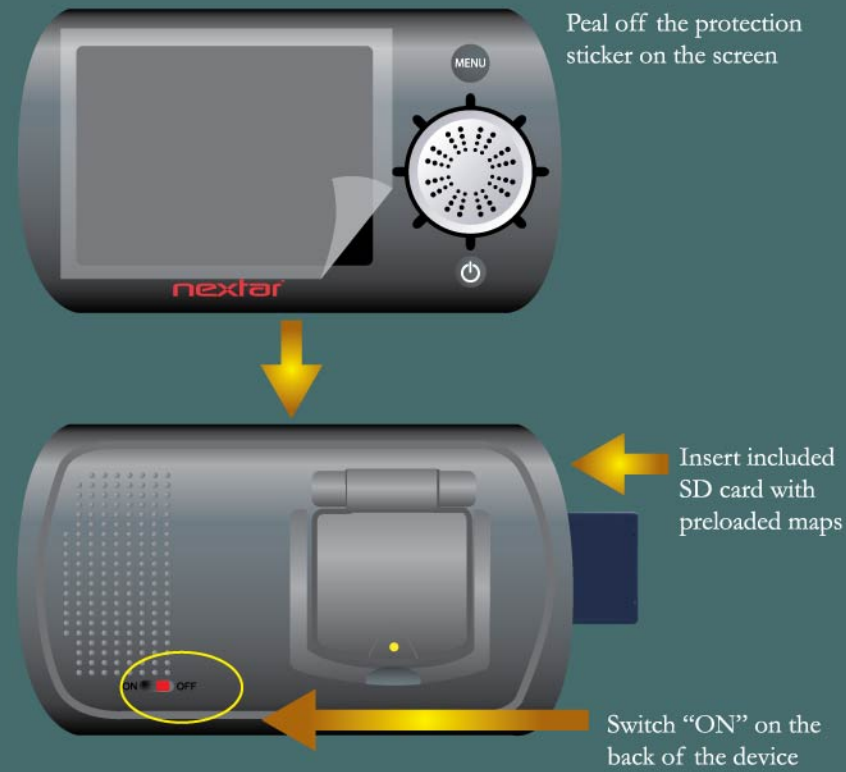


nextar™ AUTOMOTIVE NAVIGATION SYSTEM (GPS)

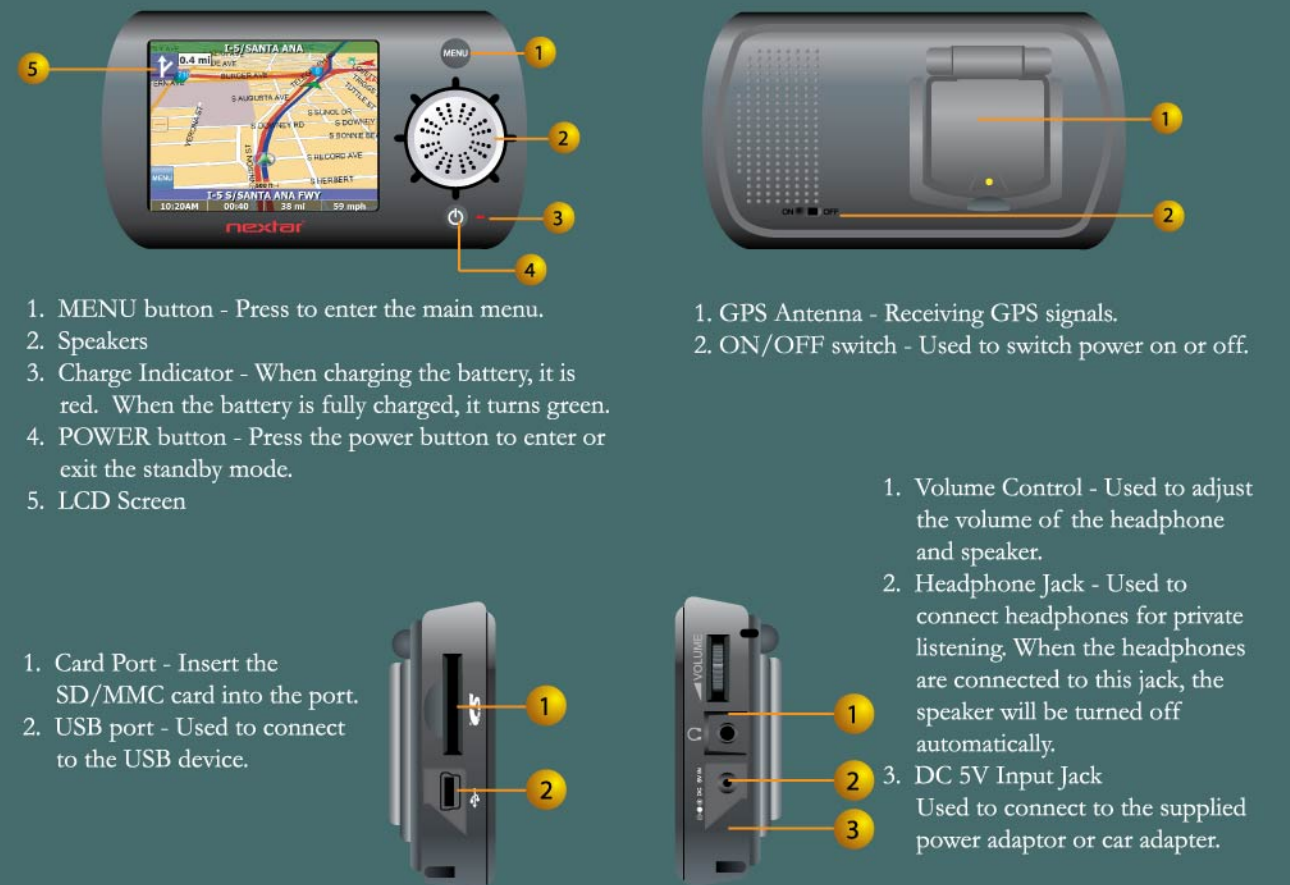
Accessories List



How To Turn On the Device



Unit View Description



Using the Mounting Bracket

When using the unit in vehicle, you can use the supplied mounting assemblies (mounting bracket, mounting cradle and dashboard mount disk) to mount the unit in the vehicle. Take the following steps to operate:



- Slide the mounting cradle onto the end of the mounting bracket.
- Lift the suction cup lever.
- To mount to windshield, press the suction cup to the windshield and press down on the suction cup lever. To mount to dashboard, use the included adhesive disk. Choose a clean, dry spot on your dashboard, peel off protection liner from the back of the disk, and then attach the disk to your dashboard.

"NOTICE TO DRIVERS IN CALIFORNIA AND MINNESOTA: State law prohibits drivers in California and Minnesota from using suction mounts on their windshields while operating motor vehicles. Other state or local laws may also prohibit drivers from using suction cups on their windshields. (See California Vehicle Code Section 26708(a); Minnesota Statutes 2005, Section 169.71)"

Quick Steps to Navigate



Keypad Operation and Screen Icons



Safety Advice



We strongly recommend that you observe the usage precautions laid out in this instruction. In no event will Nextar be liable for any indirect, incidental, special or consequential damages to any persons caused by Nextar's negligence, or for any lost profits, lost savings, loss of use, lost revenues or lost data arising from or relating to this device, even if Nextar has been advised of the possibility of such damages. In no event will Nextar's liability or damages to you or any other person ever exceed the amount paid by you for the device, regardless of the form of the claim. Some countries/states do not allow the limitations or exclusion of liability for incidental or consequential damages, so the above limitation or exclusion may not apply to you.