

5 In 5 Out VGA Matrix Switch

with Audio

User's Guide



Models
SW-VGA-5X5



© 2008 Avenview Inc. All rights reserved.

The contents of this document are provided in connection with Avenview Inc. ("Avenview") products. Avenview makes no representations or warranties with respect to the accuracy or completeness of the contents of this publication and reserves the right to make changes to specifications and product descriptions at any time without notice. No license, whether express, implied, or otherwise, to any intellectual property rights is granted by this publication. Except as set forth in Avenview Standard Terms and Conditions of Sale, Avenview assumes no liability whatsoever, and disclaims any express or implied warranty, relating to its products including, but not limited to, the implied warranty of merchantability, fitness for a particular purpose, or infringement of any intellectual property right.

Reproduction of this manual, or parts thereof, in any form, without the express written permission of Avenview Inc. is strictly prohibited.

Table of Contents

Section 1: Getting Started	3
1.1 Important Safeguards	3
1.2 Safety Instructions	3
1.3 Regulatory Notices Federal Communications Commission (FCC)	4
1.4 Introduction	4
1.5 Features	5
1.6 Package Contents.....	5
1.7 Before Installation.....	5
1.8 Panel Description	6
1.9 RS232 Control	7
1.10 IR Remote Control.....	9
Section 2: Installation.....	10
Section 3: Specifications.....	11

Section 1: Getting Started

1.1 Important Safeguards

Please read all of these instructions carefully before you use the device. Save this manual for future reference.

What the warranty does not cover

- Any product, on which the serial number has been defaced, modified or removed.
- Damage, deterioration or malfunction resulting from:
 - Accident, misuse, neglect, fire, water, lightning, or other acts of nature, unauthorized product modification, or failure to follow instructions supplied with the product.
 - Repair or attempted repair by anyone not authorized by us.
 - Any damage of the product due to shipment.
 - Removal or installation of the product.
 - Causes external to the product, such as electric power fluctuation or failure.
 - Use of supplies or parts not meeting our specifications.
 - Normal wear and tear.
 - Any other causes which does not relate to a product defect.
- Removal, installation, and set-up service charges.

1.2 Safety Instructions

The SW-VGA-5X5 VGA/Component/Composite Matrix with Audio has been tested for conformance to safety regulations and requirements, and has been certified for international use. However, like all electronic equipments, SW-VGA-5X5 should be used with care. Please read and follow the safety instructions to protect yourself from possible injury and to minimize the risk of damage to the unit.

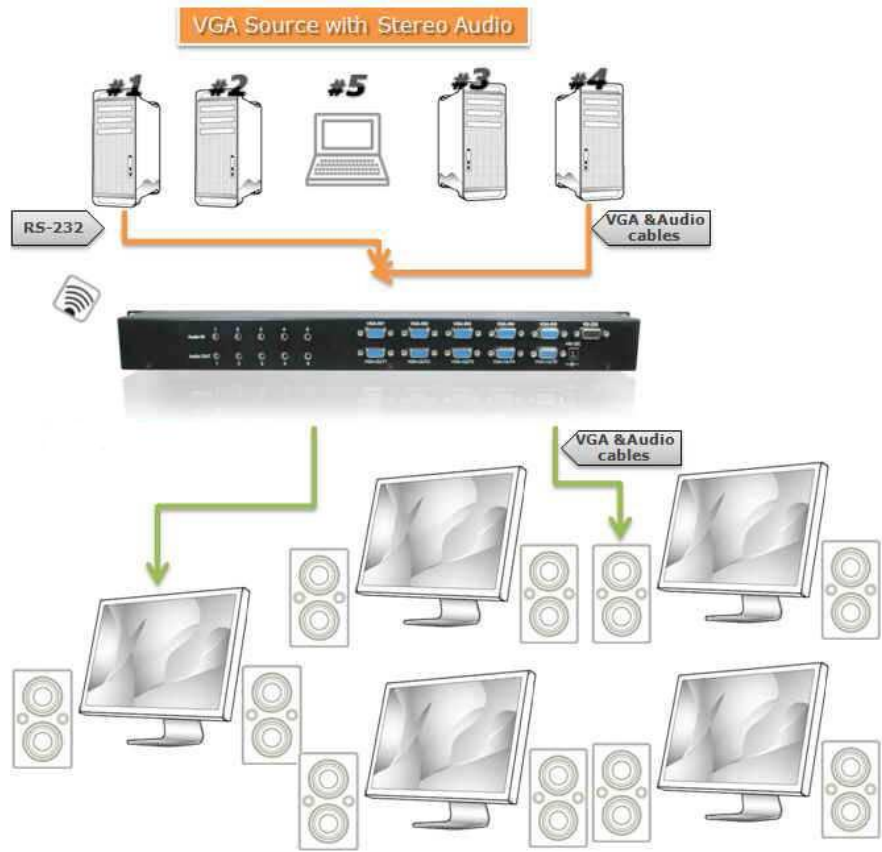
- Do not dismantle the housing or modify the module.
- Dismantling the housing or modifying the module may result in electrical shock or burn.
- Refer all servicing to qualified service personnel.
- Do not attempt to service this product yourself as opening or removing housing may expose you to dangerous voltage or other hazards
- Keep the module away from liquids.
- Spillage into the housing may result in fire, electrical shock, or equipment damage. If an object or liquid falls or spills on to the housing, unplug the module immediately.
- Have the module checked by a qualified service engineer before using it again.
- Do not use liquid or aerosol cleaners to clean this unit. Always unplug the power to the device before cleaning.

1.3 Regulatory Notices Federal Communications Commission (FCC)

This equipment has been tested and found to comply with Part 15 of the FCC rules. These limits are designed to provide reasonable protection against harmful interference in a residential installation. Any changes or modifications made to this equipment may void the user's authority to operate this equipment.

1.4 Introduction

This SW-VGA-5X5 receives and amplifies up to 5 VGA inputs, perfectly switches the desired input to the VGA equipped monitor or receiver. This matrix enables the broadcast of multiple computers' audio and video outputs to multiple displays. Any one of the inputs can be broadcasted to any or all of the outputs without introducing noticeable video quality distortion. The matrix supports VGA video bandwidth up to 400MHz and also supports YPbPr component, S-Video, and Composite signals. The re-transmitted video quality is guaranteed and the longest transmission is up to 65 meters (210 feet). Therefore, SW-VGA-5X5 offers the most convenient and cost effective means for swift switch of high quality PC graphics and HDTV videos with crystal clear audio in the market. With equipped audio matrix, SW-VGA-5X5 is ready to be as YPbPr matrix with stereo audio and ideally for boardroom, showroom, and exhibition. Through IR remote, RS-232 or front panel push button, the control of SW-VGA-5X5 becomes versatile and easier..



1.5 Features

- Broadcasts the audio and video outputs from five computers to five monitors and speakers
- Up to 5 Graphics/Video Inputs (appropriate adapters are required)
- Supports video bandwidth up to 400 MHz
- Any one of the inputs can be broadcasted to any or all of the outputs
- Built-in video signal amplifier for up to 65m (210-ft) long transmission
- 3.5mm audio outputs to drive either speakers or earphones
- Multiple control by IR remote, push button, and RS-232 control
- 1U rack mountable

1.6 Package Contents

Before you start the installation of the converter, please check the package contents.

- | | |
|-----------------------------------|-----|
| - VGA-VS-5X5 | x 1 |
| - VGA to Component Breakout Cable | x 5 |
| - IR Remote Control | x 1 |
| - Power Adapter (+5VDC) | x 1 |
| - User's Manual | x 1 |

1.7 Before Installation

- Put the product in an even and stable location. If the product falls down or drops, it may cause an injury or malfunction.
- Don't place the product in too high temperature (over 50°C), too low temperature (under 0°C) or high humidity.
- Use the DC power adapter with correct specifications. If inappropriate power supply is used then it may cause a fire.
- Do not twist or pull by force ends of the optical cable. It can cause malfunction.

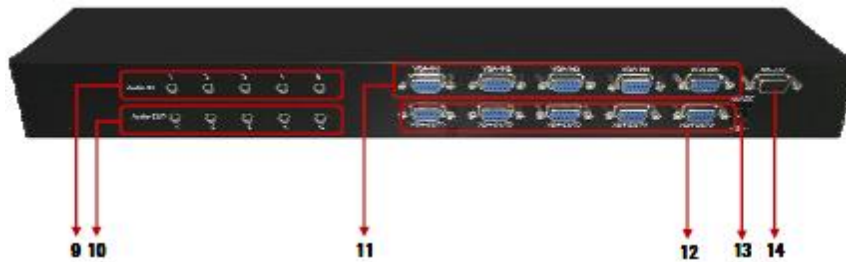
1.8 Panel Description

FRONT PANEL



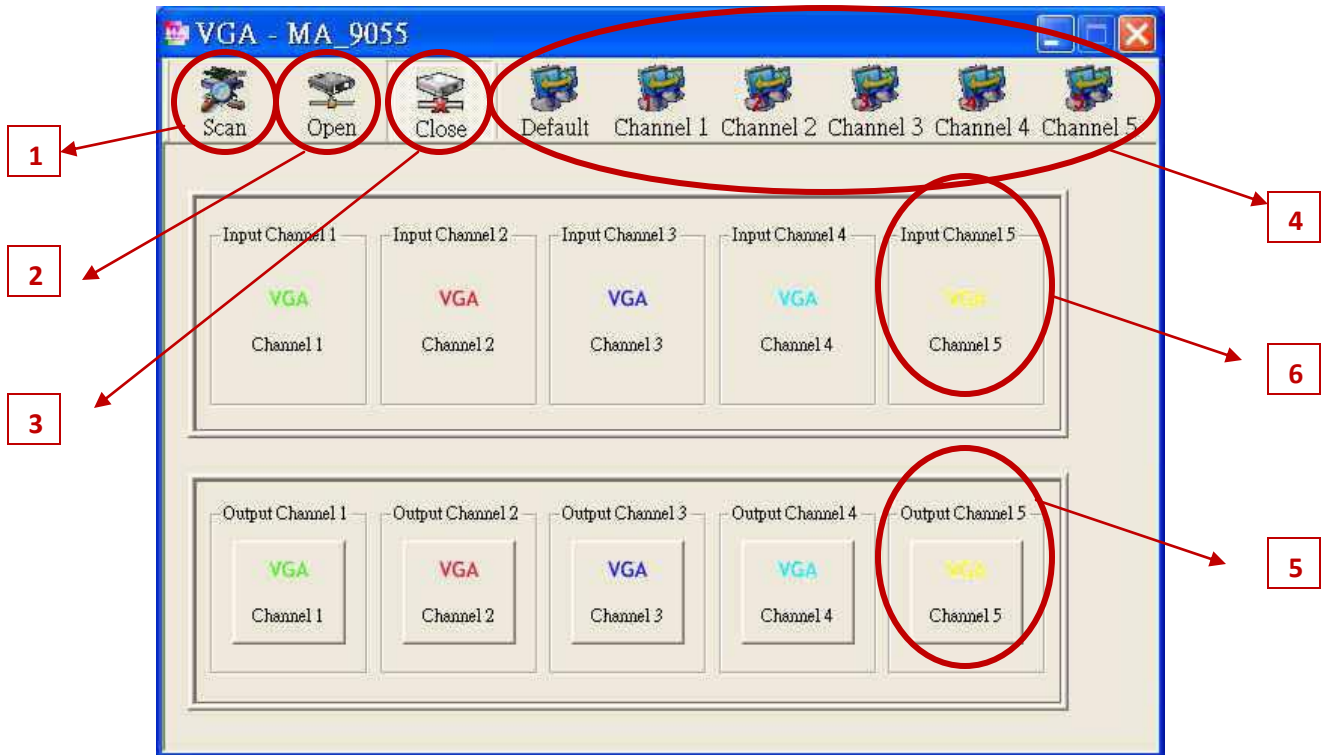
1. Indicator of Input Channels	2. Increase of Input Channels
3. Decrease of Input Channels	4. Increase of Output Channels
5. Decrease of Output Channels	6. Indicator of Output Channels
7. IR Receiver	8. Power Indicator

REAR PANEL



9. Audio Inputs	10. Audio Outputs
11. Video Inputs	12. Video Outputs
13. 5V DC Power	14. RS232 Control Port

1.9 RS232 Control

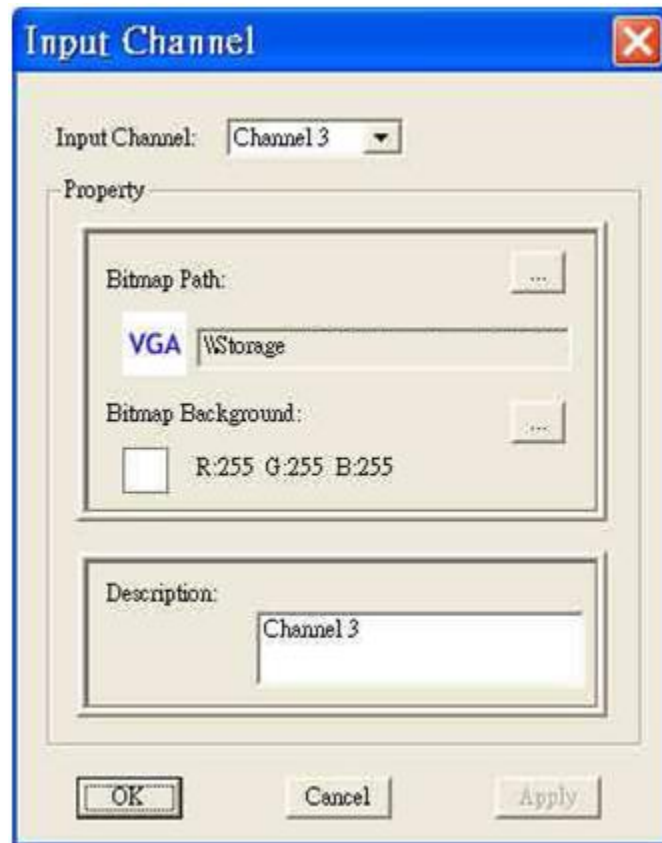


1. **Scan:** Push this button will trigger the automatic search over all the available COM ports (1-255). If the matrix is detected, the “Successful Connected” message window will show up.

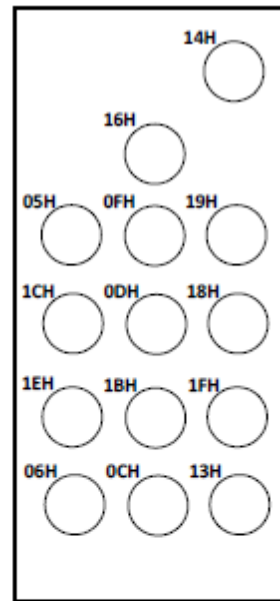
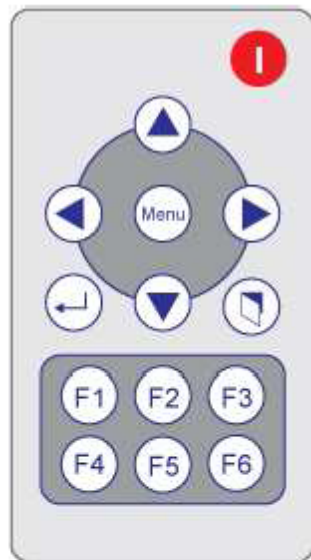
Otherwise, an error message “Com Port is not Available” shows up to indicate there is no legal device found. Notice that successful connection is only established if there is at least one available COM port.

2. **Open:** Open the COM port after scan to establish the connection between PC and the matrix.
3. **Close:** Release the COM port after scan.
4. **Quick Setup Buttons:** Provide the fast setup between inputs and outputs of the matrix. “Default” button makes input 1, 2, 3, 4, 5 mapped to output 1, 2, 3, 4, 5 respectively. “Channel 1” makes all outputs see input1. Same to the rest of the buttons.
5. **Output Channel Setup:** Click on this button, a quick selection table of inputs will show up. Users can therefore easily select the input video for each output.

6. **Input Channel Setup:** The button will bring up the setup window for the inputs as below.



1.10 IR Remote Control



- | | | |
|---------------|-----------------------|-----------------------|
| : Reserved | : Decrease CH | : All Outputs see CH3 |
| : Increase CH | : Change Input CH | : All Outputs see CH4 |
| : Reserved | : Change Output CH | : All Outputs see CH5 |
| : Decrease CH | : All Outputs see CH1 | : CHx sees CHx |
| : Increase CH | : All Outputs see CH2 | |



Section 2: Installation

Follow these instructions for installation of VGA-VS-5X5:

1. Connect VGA enable equipments to the outputs of VGA-VS-5X5.
2. Connect the VGA input sources to the inputs of VGA-VS-5X5.
3. Plug power adapter cable into 5V DC power jack.
4. Use IR Remote, RS-232 serial commands, or front panel push button to switch among inputs.

Section 3: Specifications

Item	Description
Model	SW-VGA-5X5 (VGA Matrix Switch)
Supported Input / Output	VGA /Component
Video Bandwidth	400 MHz
Supported Resolutions	1080p60, WUXGA (1920x1200@60) & UXGA (1600x1200@60)
Transmission	HD (720p/1080i) – 65m (210ft)
Audio Support	Analog Stereo
Input	5 x VGA (Component through VGA to Component Cable) 5 x 3.5mm Analog Audio 1 x RS232
Output	5 x VGA 5 x 3.5mm Analog Stereo Audio
VGA Connector	HD-15 (15-pin D-sub female)
RS232 Connector	DE-9 (9 pin D-Sub female)
Audio Connector	3.5mm Earphone Jack for Analog Stereo Audio
Input Selection	IR Remote / Push Button / RS232
Dimensions	17.3" x 3.8" x 1.7" (L x W x H)
Weight	2.4 lbs
Power Supply	5V 4A DC
Power Consumption	13 Watts (max)
Operating Temperature	0~40°C [32~104°F]
Storage Temperature	-20~60°C [-4~140°F]
Relative Humidity	20~90% RH [no condensation]



Disclaimer

While every precaution has been taken in the preparation of this document, Avenview Inc. assumes no liability with respect to the operation or use of Avenview hardware, software or other products and documentation described herein, for any act or omission of Avenview concerning such products or this documentation, for any interruption of service, loss or interruption of business, loss of anticipatory profits, or for punitive, incidental or consequential damages in connection with the furnishing, performance, or use of the Avenview hardware, software, or other products and documentation provided herein.

Avenview Inc. reserves the right to make changes without further notice to a product or system described herein to improve reliability, function or design. With respect to Avenview products which this document relates, Avenview disclaims all express or implied warranties regarding such products, including but not limited to, the implied warranties of merchantability, fitness for a particular purpose, and non-infringement.