



Release Notes

WiLife Video Security System

V2.1

Copyright Information



Copyright © 2007, WiLife, Inc. All Rights Reserved.

WiLife® provides documentation for the WiLife Command Center by (1) CD distributed with the WiLife system; and/or (2) download or access via the Internet at one of the WiLife websites. All such documentation, as well as the software described therein, is the Proprietary and Confidential Information of WiLife, Inc. No part of the contents of this document may be reproduced or transmitted in any form or by any means without the written permission of WiLife.

WiLife, WiLife Command Center, and WiLife Online are trademarks of WiLife Inc. Microsoft .NET Framework, Microsoft, Windows, Windows Vista, and Windows XP are registered trademarks or trademarks of Microsoft Corporation. All other product or service names are the property of their respective owners.

Portions of the WiLife hardware and software have pending patents.

WiLife, Inc.

132 E. 13065 S. Suite 200

Draper, UT 84020

Phone: 801.316.4700


FAX: 801.316.4701

www.wilife.com

This document describes the major changes in the firmware and software evident to the user for versions 2.1 and 2.0.

New Features 2.1

Full-screen Mode

You can now maximize the video display to full screen. Simply click on the “Maximize” icon  located with the other Title Bar Controls.

Full-screen mode is also activated and deactivated using the F11 hotkey. (Other hotkeys are available for this feature. See Online Help F1 for a full list.)

Full-screen mode includes many of the same features as the standard video panel display:

- Drag/drop re-arrange video windows.
- Right-click on the video windows and change camera settings.
- Double-click on a video to switch between full-screen mode and normal mode.
- Press the keys Alt + Tab to go to another app window. The video windows will be in the background.

WiLife Now Supports Monitor Power Save

WiLife Command Center 2.1 now allows the monitor to enter a power save mode, though the software will still attempt to prevent automatic sleep, as it did before.

If you would like to use your PC as a monitoring station, or keep the monitor from turning off, you can enable this by changing your power management options. We also encourage you to disable your screen saver if you intend to use your PC as an uninterrupted monitoring station.

To disable the monitor’s power save feature under XP:

- 1) Start -> Control Panel (Classic View) -> Power Options.
- 2) On the Power Schemes tab, change "Turn off monitor" to "Never".
- 3) Click OK.

To disable the monitor’s power save feature under Vista:

- 1) Start -> Control Panel (Classic View) -> Power Options.
- 2) From the links on the left, click "Choose when to turn off the display".
- 3) Change "Turn off the display" to "Never".
- 4) Click Save Changes.

Improved Ethernet HomePlug Bridge Support

The WiLife Ethernet HomePlug Bridge allows you to connect your standard WiLife cameras (Indoor, Outdoor, or Spy) to the WiLife Command Center over the already existing LAN – replacing the WiLife USB. The WiLife Ethernet Powerline Bridge is perfect for larger homes or small businesses that already have a network.

The WiLife Ethernet Powerline Bridge can be used with any WiLife Retail or WiLife Pro system.



Other WiLife Command Center Enhancements

- Changed Command Center so it works with any HomePlug USB adapter, instead of only those with WiLife MAC addresses.

- Modified First Run Wizard to save remote viewing changes on premature exit of wizard.
- Modified camera firmware to improve camera video streaming performance over the powerline.

New Features 2.0

This significant release of the WiLife Video Security System supports Windows Vista™, adds many new features that include the software upgrade for WiLife Platinum, and resolves other less evident software and firmware functionality, but nonetheless, very important.

WINDOWS VISTA

WiLife Command Center now installs and runs on the Windows Vista operating system. Windows 2000 is no longer supported.

WILIFE PLATINUM

WiLife Platinum expands your already powerful video security system with superior camera, PC and online features. With Platinum, increase your monitoring capability, control, and power to better protect your property, family, and employees. It's the ultimate in video security. You'll never want to go back to monitoring the old fashioned way.

Scheduled Alerts

Use a simple calendar to schedule times to turn email and cell motion alerts on or off. For example, arm your system Monday through Friday at 10:00 PM and disarm at 6:00 AM.

No-Motion Detected Alerts

Intelligently monitor an area where you expect motion. If there is no motion, the system alerts you. Now you can be notified immediately whether the kids come home from school on time.

Desktop Notifications

Let WiLife notify you when there is motion on your cameras with a popup window on your PC. Notifications display a thumbnail image of the event and optionally sound an alert tone of your choice.

Password System Lock

Keeps the snooping eyes and tampering fingers of employees or kids off the entire Command Center or individual features while you are away. Lock access using your private system password.

Digital Pan-Tilt-Zoom

Scan and zoom within the current viewing area of your camera. Now you can focus in on the door, cash register, or other home and business targets from your WiLife Command Center.

Online Connection Monitoring

Remotely supervise your system by receiving an email or cell phone message if your Command Center, PC, or cameras go offline. Now you can take action fast.

Online Video Storage

Keep your important video safe. Store protected video clips securely in your online account where you have the perfect tools to review, organize, and share.

Online Camera Management

Control cameras through WiLife Online where you can remotely adjust options such as resolution, motion sensitivity, and even arm/disarm alerts.

Online Search & Playback

Online Video Sharing

Go beyond live Internet viewing. Access your recorded video at anytime, anywhere. Use easy search tools to locate and view video by date, time, and site - with up to the minute availability.

Share select video clips with friends, family, employees and even local law enforcement. Simply upload the segment and list the email addresses for nearly instant distribution.

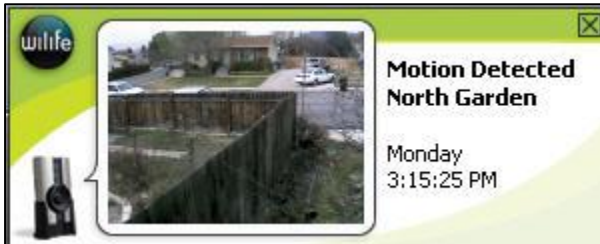
REMOTE CONTROL OF COMMAND CENTER

WiLife Command Center now communicates with remote web services, specifically online viewing. This provides faster remote connections and other remote control interactions, consisting of the following:

- Change camera settings remotely such as camera name, flip/mirror, resolution, frame rate, bit rate, enable/disable of camera LEDs, motion sensitivity value, alert action, min motion for alerts, and max alert frequency.
- Change the Alerts setting remotely (force arm, stop event)
- Search for a list of recorded Command Center files meeting user-specified criteria.
- Play back recorded Command Center video files obtained in the search list just mentioned.
- Upload recorded video files to WiLife Online for off-site protection.
- Authenticate video uploads to improve account security.

DESKTOP NOTIFICATIONS

See and hear when there is motion on your property by using Desktop Notifications. For example, receive popup windows that include the sound of a dog barking whenever a car pulls into the driveway.



DIGITAL PAN, TILT, ZOOM

With Digital PTZ, you can narrow in on specific areas of your WiLife cameras viewing area.

For example, zoom in on the cash register and get a close up view. The Digital Pan-Tilt-Zoom (PTZ) section increases your monitoring capability and scope by allowing you to select a camera from the WiLife Command Center Live View and digitally reposition the camera so that it pans left or right, tilts up or down, or zooms in on the scene displaying.



PASSWORD SYSTEM LOCK

Keep the snooping eyes and tampering fingers of employees or kids off the Command Center by locking individual features or the whole system while you are away. Lock access to stored video files, camera & recording settings, arming/disarming alerts, digital pan-tilt-zoom, and more. Your private system password is the key that locks/unlocks key features.

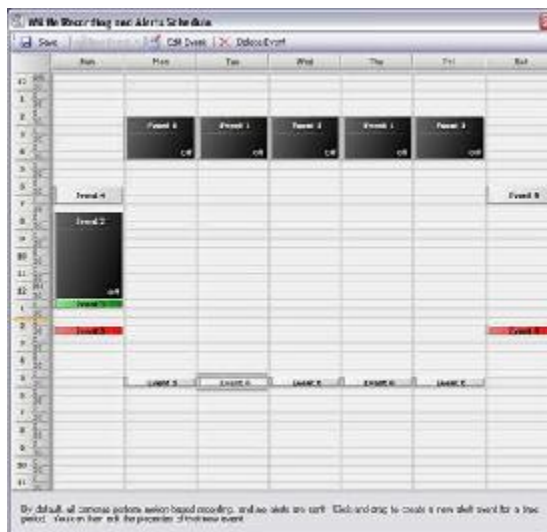
The Password System Lock feature exists on the same screen as the Change Password function located on the Setup > Advanced tab screen.

SCHEDULED ALERTS

The Scheduled Alerts feature gives you the ability to easily create scheduled events which cause recording to take place, or which arm email or cell phone alerts during selected periods of time. Scheduled Alerts makes your Command Center a notification tool – turn email and mobile phone alerts on or off at certain times, day and night. Events will automatically be armed at the times you scheduled.

Alerts are created using the Recording and Alerts Schedule calendar, a simple click-drag-and-release interface, which allows you to view your Command Center schedule and modify or create new schedule events. The calendar displays only one week – each event scheduled occurs every week.

With Scheduled Alerts enabled, your WiLife Command Center will notify you based on the motion sensed by your cameras, using one of three options: a simple text-only message; a text message that includes one frame of video; or a video clip. You can also create “no motion” alerts that will notify you that an expected event did not occur.



Functions of Scheduled Alerts also include the following:

- Set a user-configurable Delay time when arming events manually, or when arming the next event early. For example, set the "delay before activated" time at five minutes. This allows you to get out of the building before alerts are armed.
- If a recorded video clip caused an e-mail or cell phone alert, Command Center will flag the video segment. This flag is stored in the .wmv file's metadata and can be used as a search criterion on the Online Search and Playback page of your WiLife Online account.
- A link will display in the e-mail alerts that open your WiLife Online account and allow you to view the video that triggered the alert.

NO MOTION DETECTION ALERTS

The No Motion Detection Alerts feature allows you to intelligently monitor an area where you expect motion. And if there is no motion, Command Center alerts you. This feature is perfect for situations that have to happen, such as the kids walking into the house after returning home from school or an employee who should arrive on time to open the store.

If this event type is selected, you can further indicate whether he wants to be notified by the first qualified motion event during this interval or the last.

UPLOAD VIDEO SEGMENTS

Store important videos recorded by your cameras on secure WiLife servers on the web. In fact, call it your very own WiLife video vault!

Command Center makes uploading video segments to your WiLife Online account easy. Literally right-click on the video file you want to upload and select “Protect and Upload Video Segments.” That’s it! Your video file is transferred to a safe and secure WiLife server.

Once uploaded video segments are on your WiLife Online account, you can play them from anywhere in the world, at any time; and share them with friends, family, and even local law enforcement, if needed.

ONLINE CONNECTION MONITORING

Online Connection Monitoring gives you the power to supervise your WiLife Command Center remotely by receiving email and mobile phone messages whenever your WiLife Command Center or cameras go offline or online.

With this feature, you can:

- Have your own personal security supervisor.
- Be informed of command center status via connection messages.
- Get a jump start on a potential camera or site issue.
- Know immediately when and why a camera or a site goes offline.

ONLINE VIDEO STORAGE

Have you wanted an easily accessible, secure storage facility on the Internet for your most important video files? WiLife has made it possible! Online video storage. Easy accessibility. Secure storage server.

Plus, uploading video files is faster than counting to three. Literally right-click on the video file you want to upload and select “Protect and upload.” That’s it! Your video file is safe and secure in your very own WiLife video vault!

Online Video Storage allows you to:

- Store important videos recorded by your cameras on WiLife servers.
- Play stored files from anywhere in the world, at any time.
- Share selected video clips with friends, family, and even local law enforcement.
- Manage the stored video files remotely.

ONLINE VIDEO SHARING

WiLife Platinum gives you the ability to share video files you’ve stored online with friends, family, employees, and even local law enforcement. We call it Online Video Sharing and it’s so easy to do!

Online Video Sharing allows you immediate access and ability to:

- Share fun videos!
- Help substantiate or refute a claim.
- Help solve a crime.
- Create your very own security-minded community with friends, neighbors, co-workers, etc.

ONLINE SEARCH & PLAYBACK

Go beyond live Internet viewing. You can now search for and play video clips from your WiLife Command Center online! Thanks to WiLife Platinum.

- Access your recorded video from a site anywhere and at any time.
- Using a user-friendly search tool and numerous search criteria options, find video by date, time, site, or camera.
- Create and save custom searches.

- Play full video clips.

You can remotely view the video clips at any one of your WiLife Command Center sites using the Online Search and Playback page on your WiLife Online Account.

INCREASED FIREWALL FEATURES

Added support for the firewall systems Norton 360, McAfee Security Center, and Windows LiveCare.

OTHER MISCELLANEOUS ADDITIONS & CHANGES

WiLife version 2.0 improves many Command Center internals for reliability and maintainability, WiLife Installer functions (including advanced log file data capture), localization, camera discovery-related changes, video segment properties, metadata details, camera network diagnostic information, and other general reliability improvements that you won't see but nonetheless are important.

CHECK ONLINE STORAGE

Use the Check Online Storage option to monitor the amount of storage space you are using and/or have available on your WiLife Online account. The Online Storage Space screen also gives you access



to view stored videos online and purchase more online storage.

WILIFE PRODUCT TOUR VERSION 2.0 ON INSTALL CD

A new WiLife Tour is accessible on the Install CD by clicking on the available link on the Install Splash screen. The tour is also copied to the folder where the WiLife Video Security System is installed to. The interactive tour introduces you to the features of our suite of WiLife Cameras and the WiLife Command Center. Topics include Applications, 15 Minute Setup, Online Viewing, Motion Detection, Camera Management, Live Screen components, Playback features, to name a few. The tour is also narrated for your viewing and listening convenience.

REBRANDING AND NAMING CONVENTIONS

WiLife products have undergone a change of name. WiLife has replaced Werks, LukWerks, Luk, and Remote Viewing in the software and documentation. WiLife products are now named the WiLife Video Security System, WiLife Command Center, WiLife cameras, and WiLife Online.