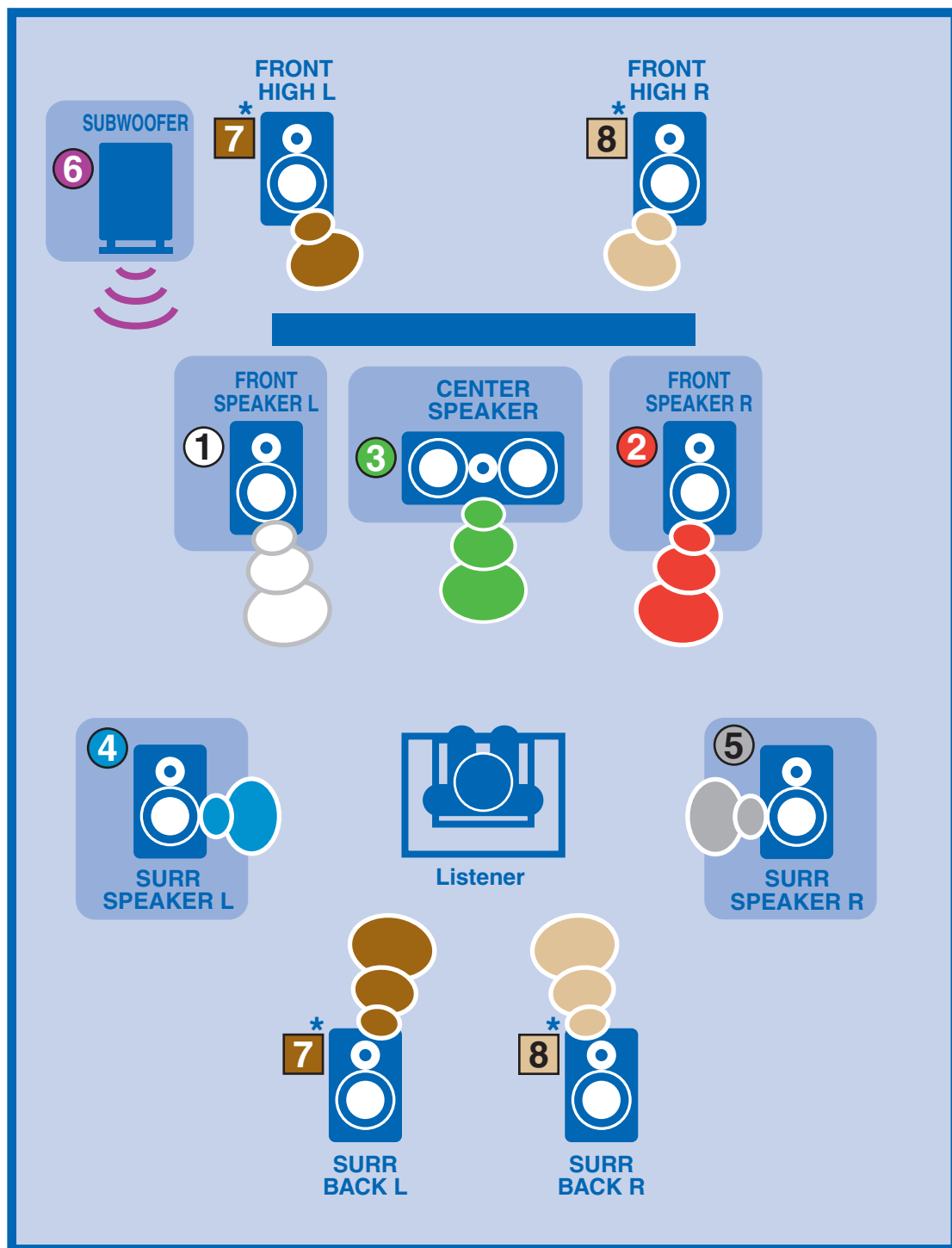


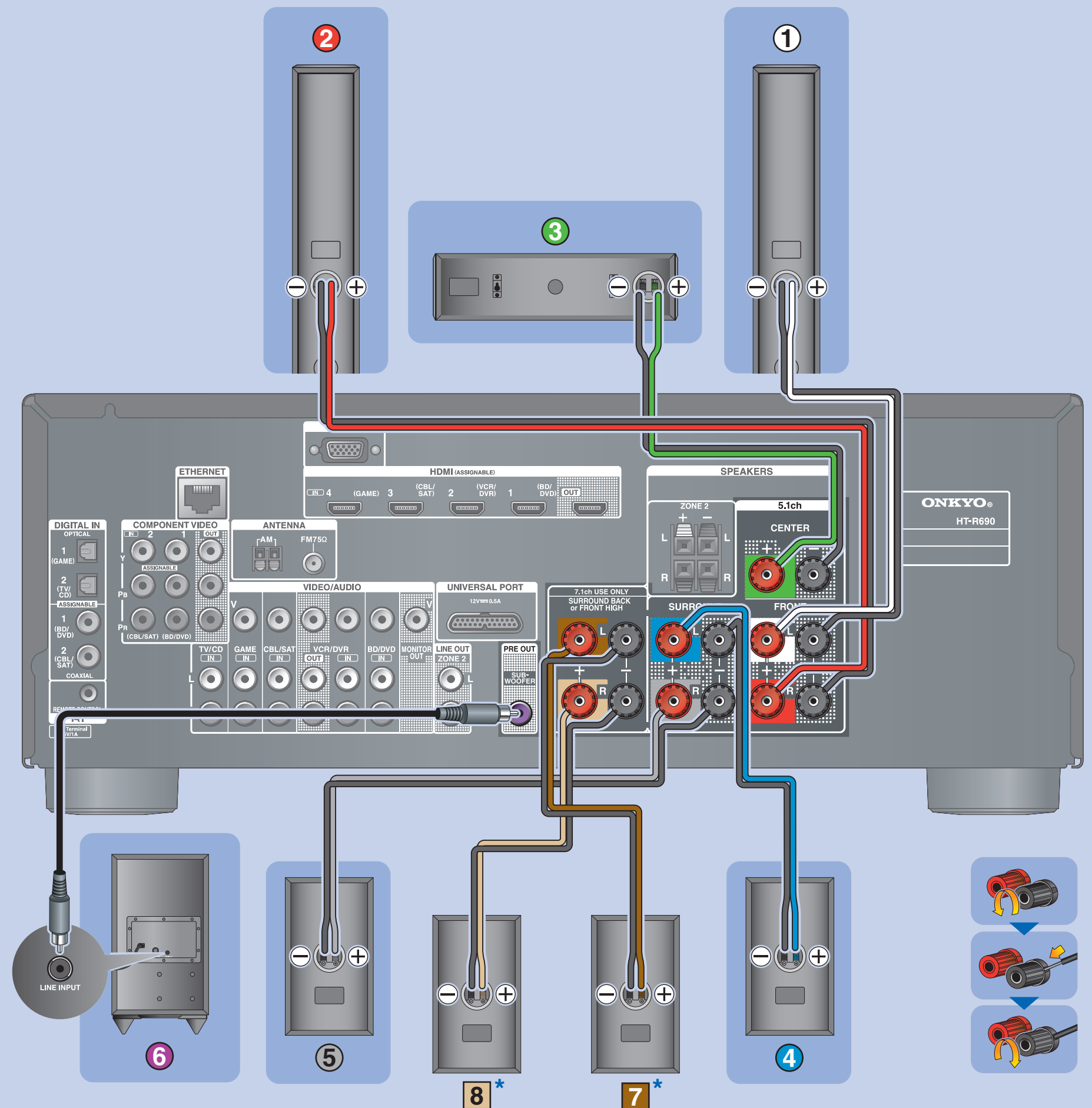
QUICK SETUP

Model: HT-S8400



Speaker Configuration

5.1-channel: ① ② ③ ④ ⑤ ⑥
 7.1-channel: ① ② ③ ④ ⑤ ⑥ + ⑦ ⑧

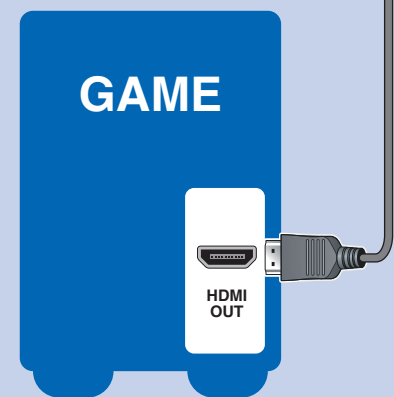
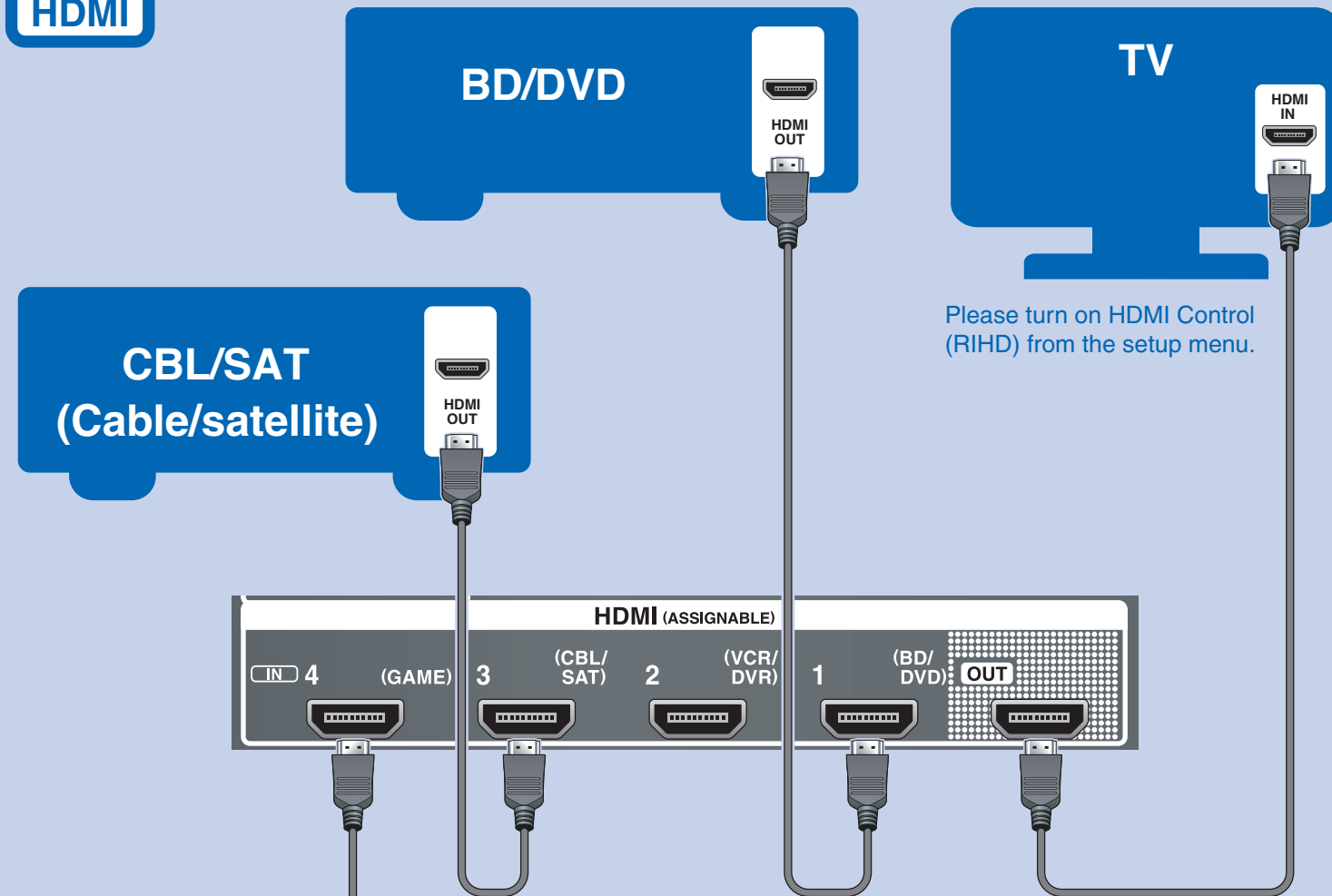


• Please connect ①, ②, ③, ④, ⑤ and ⑥, when connecting 5.1-channel surround.

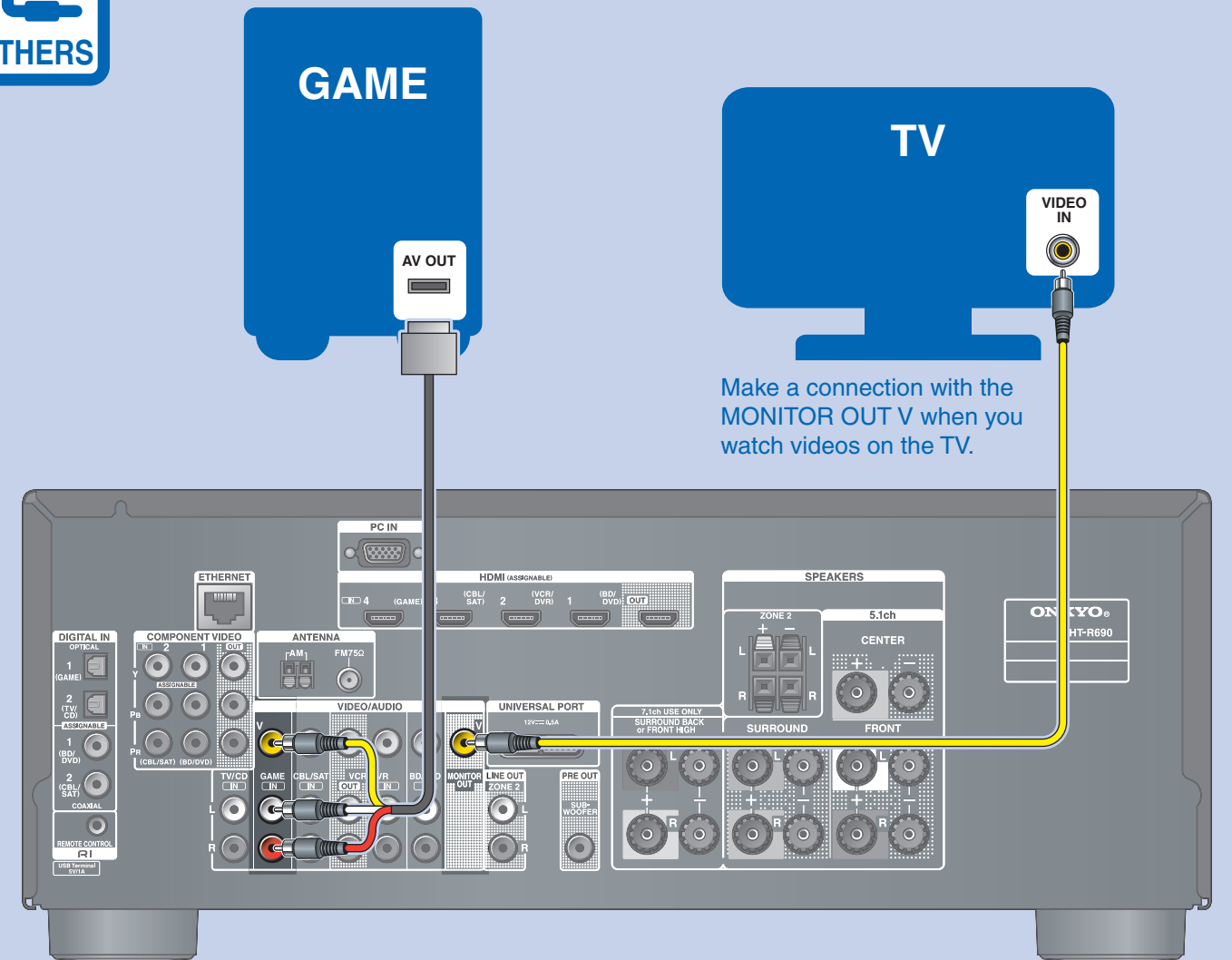
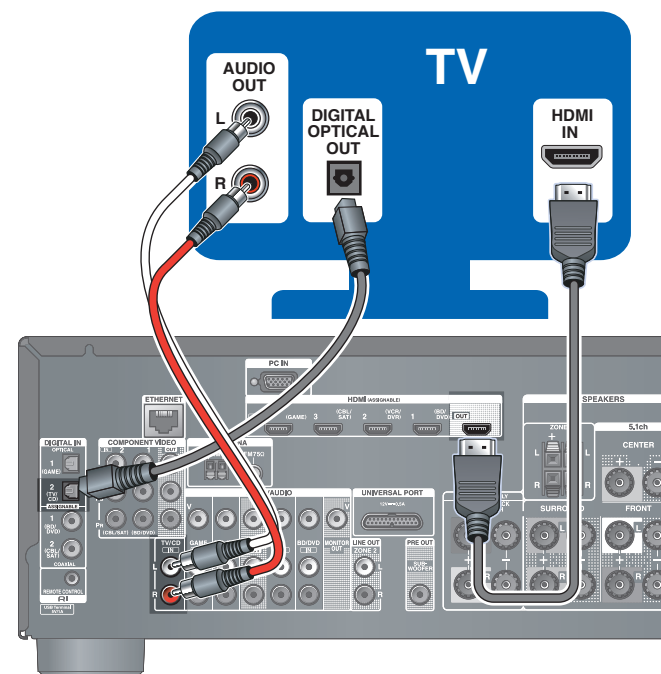
* Either the SURROUND BACK or FRONT HIGH speakers can be connected to ⑦ and ⑧. Change the settings in accordance with the connected speakers.



Connecting a TV with Audio Return Channel

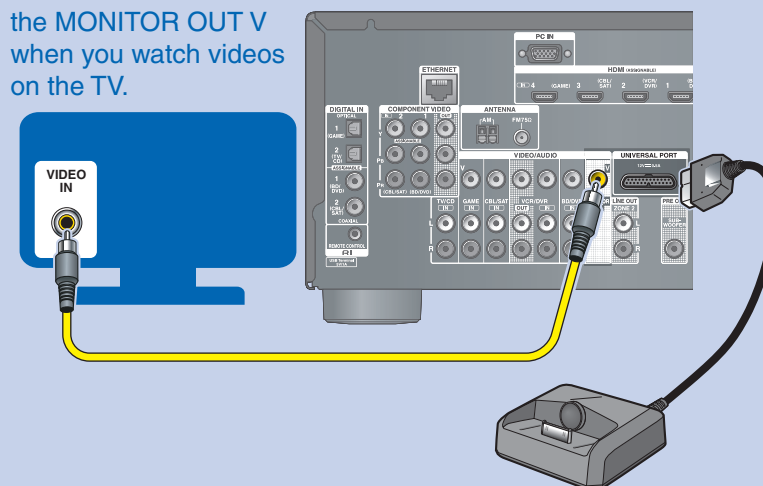


Connecting a TV without Audio Return Channel



Connecting a UP-A1 with the Port connector

Make a connection with the MONITOR OUT V when you watch videos on the TV.



Connecting a Portable Player

