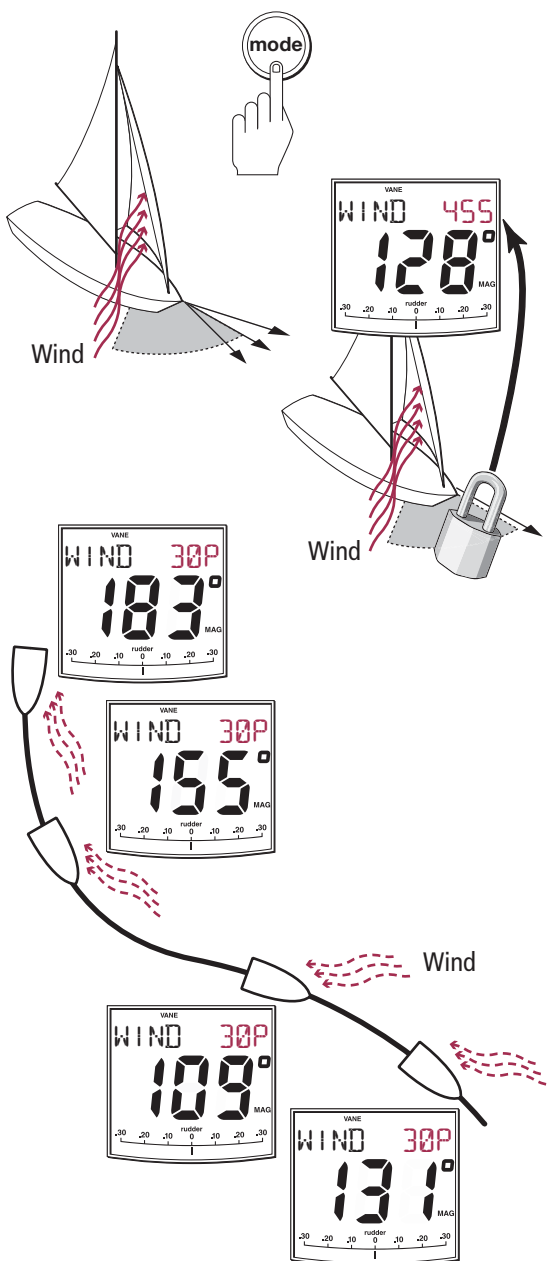
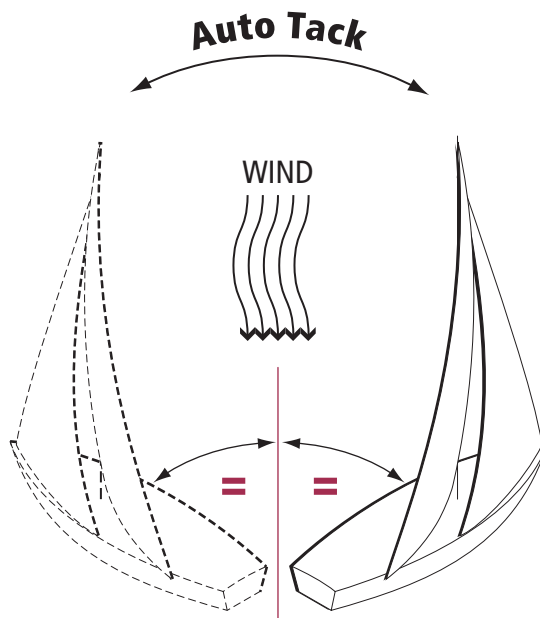


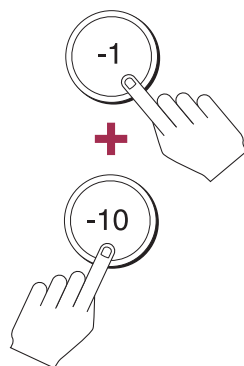
To Automatically Steer to a Fixed Wind Angle



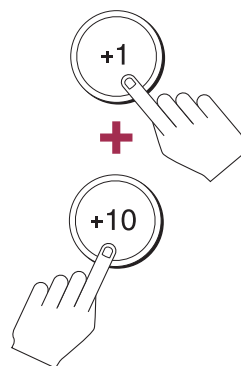
Autotack



Auto Tack
PORT



Auto Tack
STARBOARD



N.B. Refer to section 1.5 of the ST7002 Operating Guide for full details

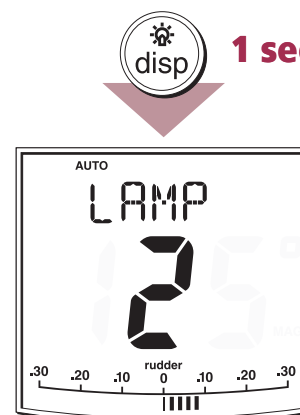
To Adjust Autopilot Course-keeping Accuracy

Autopilot response controls course-keeping accuracy. Higher response settings keep a tighter course but increase the amount of drive activity and battery use. Set to a level appropriate for your needs



Use ▼ or ▲ to adjust response level. Press **disp** to return to previous mode.

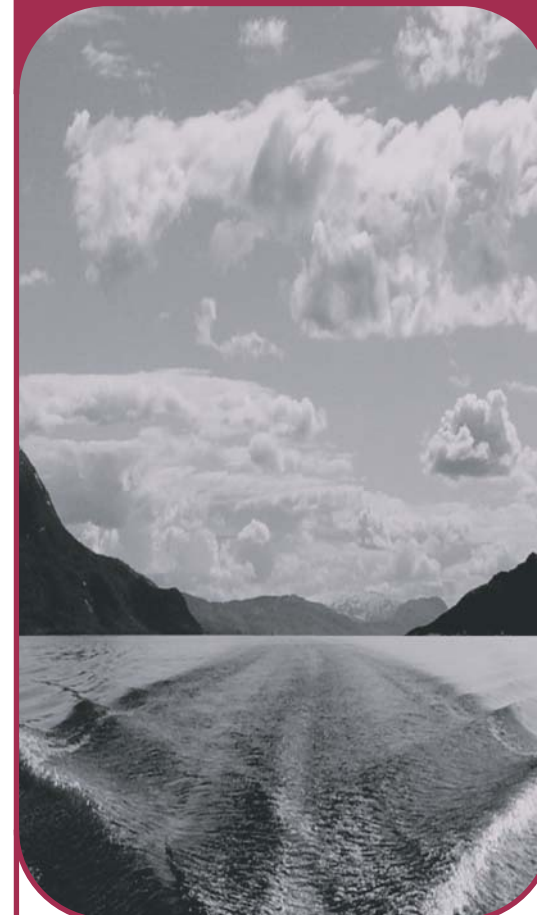
To Adjust Lighting Level



Use **disp** to adjust lighting level. Wait 10 sec to return to previous mode.

Raymarine®

SmartPilot®
ST7002 Controller



Quick Start Guide

Display Layout



disp
Press to display data pages
Press for 1 second for lamp control
Press for 3 seconds for power off



resp
Press to display response level



track
When the Autopilot is activated, press to follow a route from a connected navigation system.
Press again to accept the new course



mode
Press to select Wind Vane mode



res'm
Press to resume previous course



V&A
Press to adjust calibration, response and gain



course change keys
Port 1° Starboard 1°
Port 10° Starboard 10°



auto
Press to activate the Autopilot

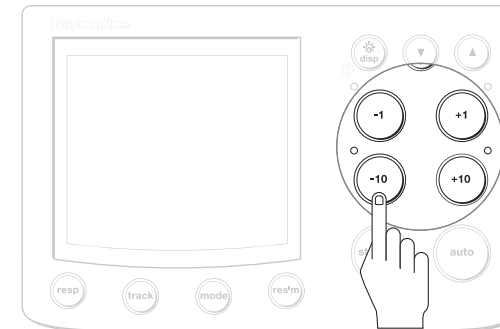
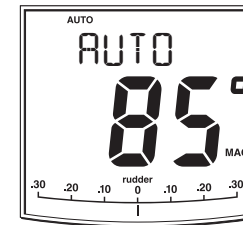
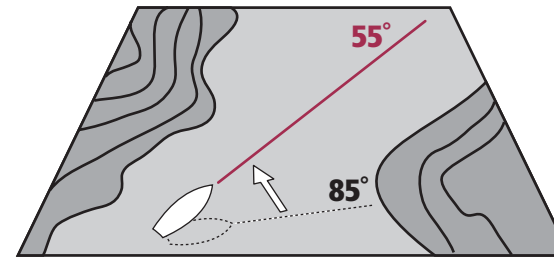


standby + auto
Press for Wind Vane mode

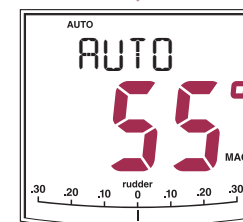


standby
Press for Manual Control

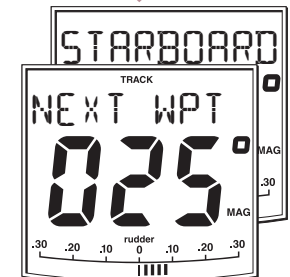
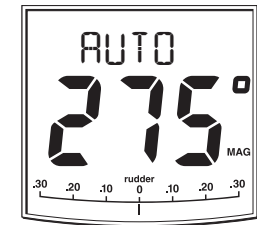
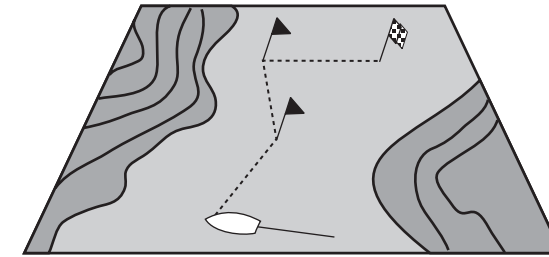
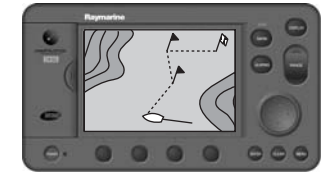
To change the Autopilot Heading



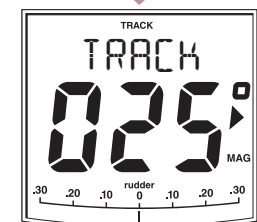
x3



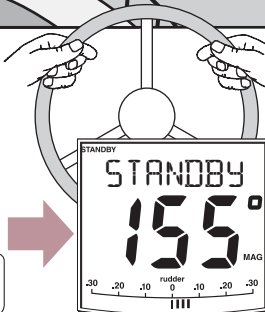
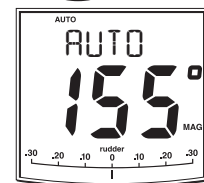
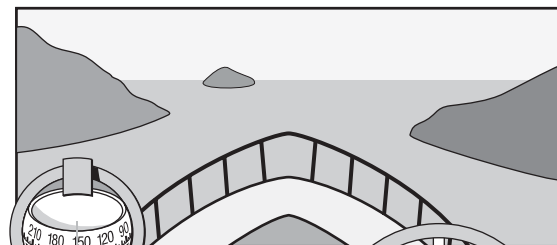
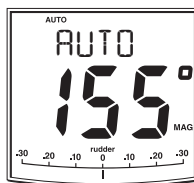
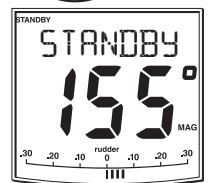
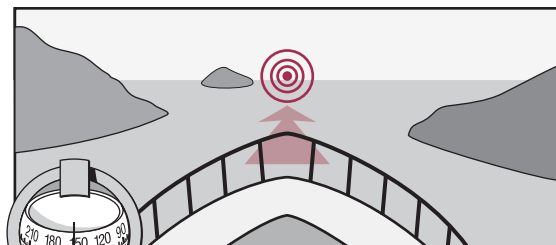
To follow a Route set on a Chartplotter



OK?



To activate the Autopilot



For Manual Control