

This guide is intended to guide you through the basic functions of this unit.  
For details, please refer to the Operation manual stored in CD-ROM.  
Furthermore, manuals are available on the website.

<http://www.pioneerelectronics.com/>

<CZR5540-A> UC



: Press



Push in the direction of the arrow



: Press and hold



: Rotate

## Basic operation



### Select a source

Source can be selected in the following order:

- XM - SIRIUS - HD Radio - **Tuner** - TV - DVD
- **Built-in CD player** - MCD - iPod - **USB** - External unit 1
- External unit 2 - **AUX 1** - AUX 2 - **BT Audio** - **BT Telephone**

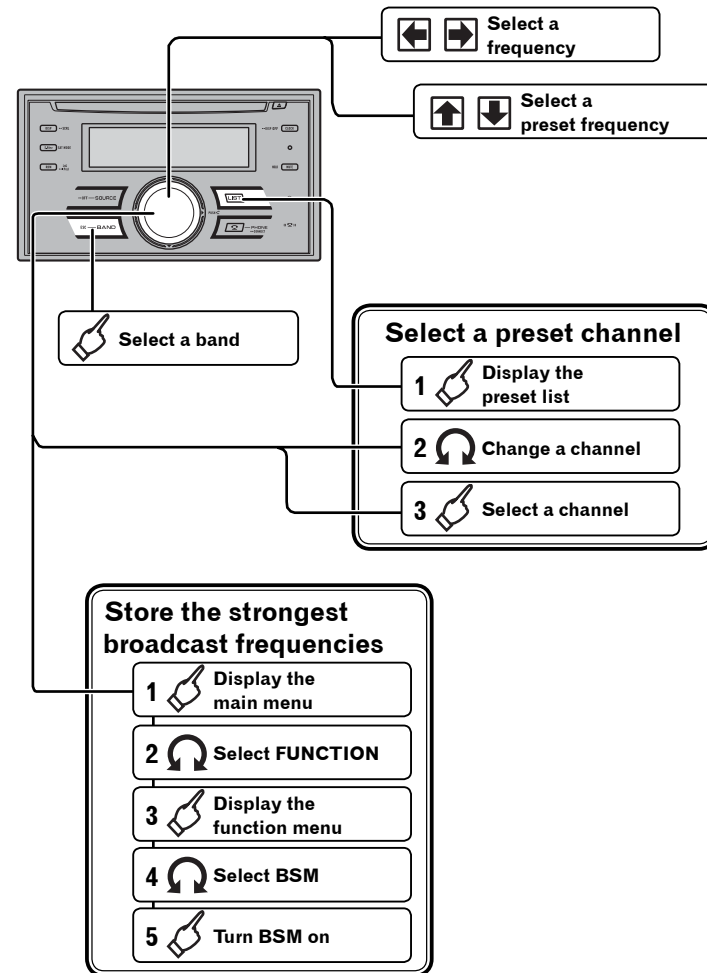
**Source name** : Built-in source

Volume adjust

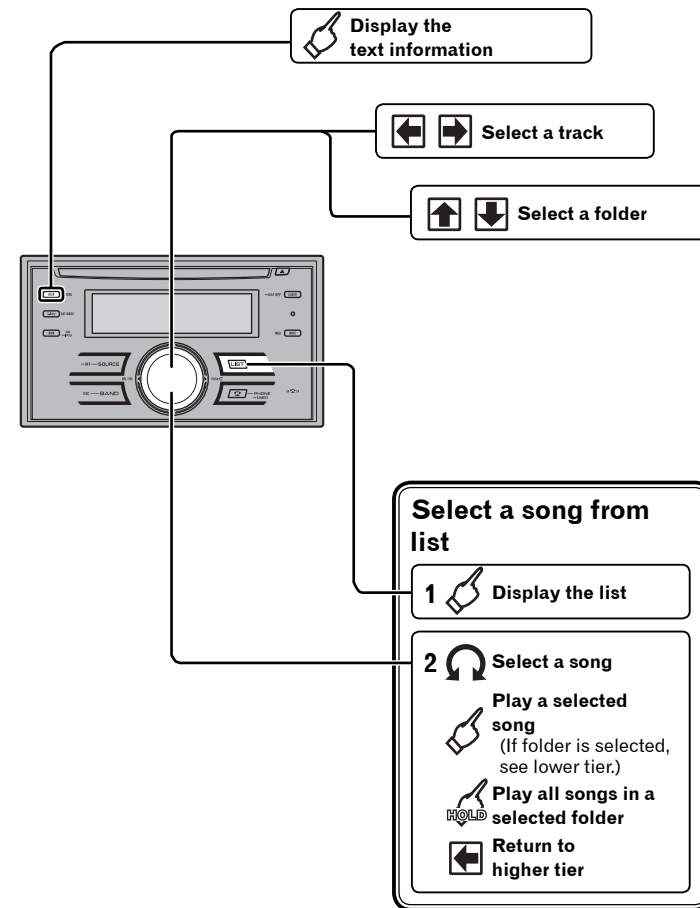
Power on

Power off

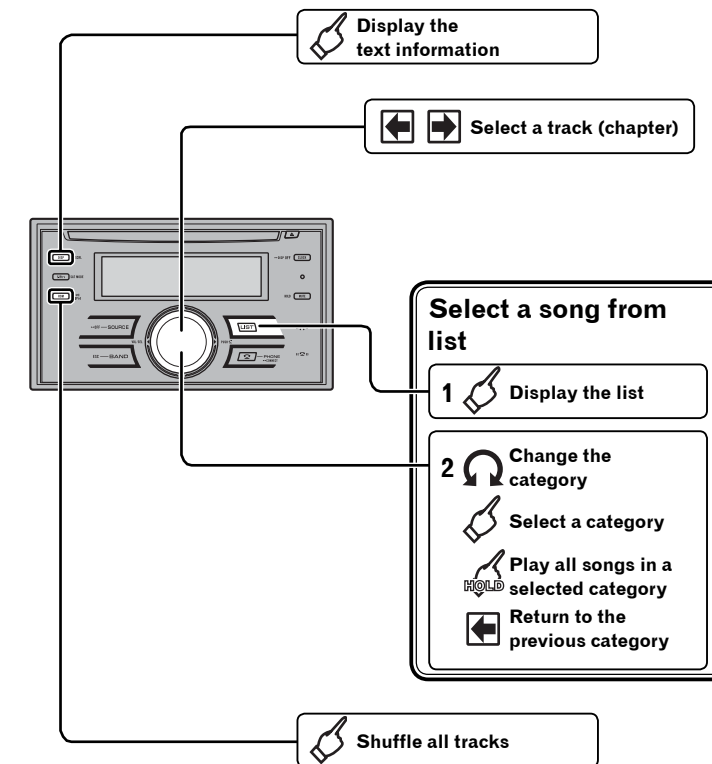
## Tuner operation



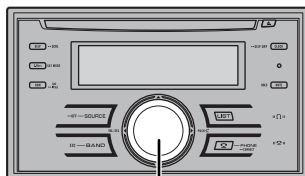
## Built-in CD and USB operation



## iPod® operation



## Bluetooth audio connection



PIN code : 0000

### Using a Bluetooth audio player to initiate a connection

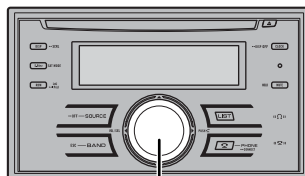
- 1 Display the main menu
- 2 Select CONNECTION
- 3 Enter the connection menu
- 4 Select BT AUDIO DEVICE
- 5 Select a group
- 6 Open a connection
- 7 Use the audio player to establish a connection

You can also enter into the Bluetooth audio player connection menu by pressing and holding **PHONE/CONNECT** while selecting Bluetooth audio player as the source.

### Connecting a paired Bluetooth audio player

- 1 Display the main menu
- 2 Select CONNECTION
- 3 Enter the connection menu
- 4 Select PAIRED DEVICE
- 5 Establish a connection

## Bluetooth telephone connection



PIN code : 0000

### Using this unit to initiate a connection

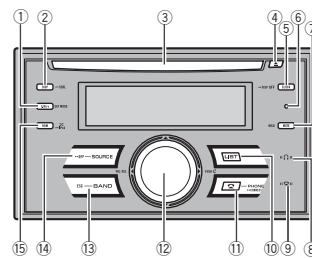
- 1 Display the main menu
- 2 Select CONNECTION
- 3 Enter the connection menu
- 4 Select BT HANDS FREE
- 5 Select a group
- 6 Determine a group
- 7 Select PAIR FROM PHONE
- 8 Open a connection
- 9 Use your cellular phone to establish a connection

You can also enter into the connection menu by pressing and holding **PHONE/CONNECT**.

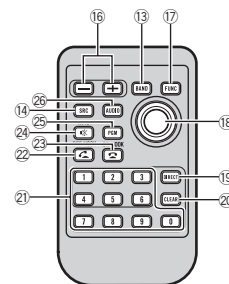
### Using a cellular phone to initiate a connection

- 1 Display the main menu
- 2 Select CONNECTION
- 3 Enter the connection menu
- 4 Select BT HANDS FREE
- 5 Select a group
- 6 Determine a group
- 7 Select PAIR FROM PHONE
- 8 Open a connection
- 9 Use your cellular phone to establish a connection

## What's what



- 1 **S.Rtrv/SAT MODE button**  
Press to switch Sound Retriever settings. When XM tuner or SIRIUS tuner is selected as the source, press to change the channel select mode. When SIRIUS tuner is selected as the source, press and hold to perform the Instant Replay mode.
- 2 **DISP/SCRL button**  
Press to select different displays. Press and hold to scroll the text information.
- 3 **Disc loading slot**  
Insert a disc to play.
- 4 **(EJECT) button**  
Press to eject a disc.
- 5 **CLOCK/DISP OFF button**  
Press to change to the clock display. Press and hold to turn the display indication and button illumination off or on.
- 6 **RESET button**  
Press to reset the microprocessor.



- 7 **MUTE/HOLD button**  
Press to turn off the sound. To turn on the sound, press again. While talking on the phone, press to put the call on hold.
- 8 **"i" indicator**  
Lights up when your Bluetooth audio player is connected via Bluetooth wireless technology.
  - While connecting, this indicator flashes.
- 9 **"c" indicator**  
Lights up when your cellular phone is connected via Bluetooth wireless technology.
  - While connecting, this indicator flashes.
  - While phone connection is not completed, this indicator flashes.
- 10 **LIST button**  
Press to display the disc title list, track title list, folder title list, file list, preset channel list or phone number list depending on the source.
- 11 **PHONE/CONNECT button**  
Press to select the phone as the source. While operating a phone source, press to end a call, reject an incoming call or cancel making a call. Press and hold to perform Bluetooth connection.
- 12 **MULTI-CONTROL**  
Move to perform various operations. Turn to increase or decrease the volume.
- 13 **BAND/ESC button**  
Press to select radio band. Press to return to the ordinary display when operating menu.
- 14 **SOURCE/OFF button**  
This unit is turned on by selecting a source. Press to cycle through all the available sources.
- 15 **RDM/iPod button**  
Press to turn random function on or off while using CD or USB. While using iPod, press to shuffle all tracks. Press and hold to change the control mode of iPod while using an iPod connected USB connector of this unit.
- 16 **+/- (VOLUME) button**  
Press to increase or decrease volume.
- 17 **FUNC button**  
Press to select functions.
- 18 **Thumb pad**  
Move to perform manual seek tuning, fast forward, reverse and track search controls. Also used for controlling functions. Functions are the same as **MULTI-CONTROL** except for volume control.
- 19 **DIRECT button**  
Press to directly select the desired track.
- 20 **CLEAR button**  
Press to cancel the input number when 0 to 9 are used.
- 21 **0 to 9 buttons**  
Press to directly select the desired track, preset tuning or disc.
- 22 **(OFF HOOK) button**  
Press to start talking on the phone while operating a phone source.
- 23 **(ON HOOK) button**  
While operating hands-free phone, press to reject, cancel or end calls.
- 24 **(MUTE) button**  
Press to turn off the sound. To turn on the sound, press again.
- 25 **PGM button**  
Press to operate the preprogrammed functions for each source.
- 26 **AUDIO button**  
Press to select various sound quality controls.