

Having **TROUBLE** with operation?

Please reset your unit

Refer to page of How to reset your unit

Vous avez des **PROBLÈMES** de fonctionnement?

Réinitialisez votre appareil

Référez-vous à la page intitulée Comment réinitialiser votre appareil

Dear Customer,
This apparatus is in conformance with the valid European directives and standards regarding electromagnetic compatibility and electrical safety.

European representative of Victor Company of Japan, Limited is:
JVC Technical Services Europe GmbH
Postfach 10 05 04
61145 Friedberg
Germany

Cher(e) client(e),
Cet appareil est conforme aux directives et normes européennes en vigueur concernant la compatibilité électromagnétique et à la sécurité électrique.

Représentant européen de la société Victor Company of Japan, Limited:
JVC Technical Services Europe GmbH
Postfach 10 05 04
61145 Friedberg
Allemagne

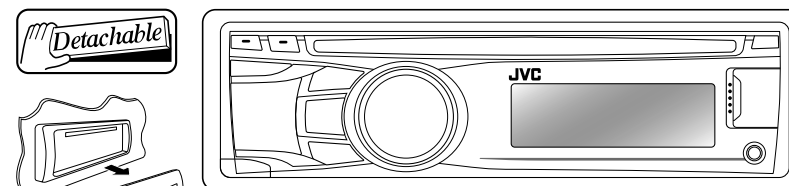
JVC

KD-R521/KD-R422/ KD-R421/KD-R45

CD RECEIVER / RÉCEPTEUR CD

ENGLISH

FRANÇAIS



Radio Data System

KD-R521:

Made for
iPod iPhone



**WMA
MP3**

For canceling the display demonstration, see page 4. / Pour annuler la démonstration des affichages, référez-vous à la page 4.

For installation and connections, refer to the separate manual.
Pour l'installation et les raccordements, se référer au manuel séparé.

JVC

EN, FR

© 2010 Victor Company of Japan, Limited

1010DTSMDTJEIN

INSTRUCTIONS MANUEL D'INSTRUCTIONS

GET0705-003A
[E/EU]



Thank you for purchasing a JVC product.

Please read all instructions carefully before operation, to ensure your complete understanding and to obtain the best possible performance from the unit.

IMPORTANT FOR LASER PRODUCTS

1. CLASS 1 LASER PRODUCT

2. **CAUTION:** Do not open the top cover. There are no user serviceable parts inside the unit; leave all servicing to qualified service personnel.

3. **CAUTION:** Visible and/or invisible class 1M laser radiation when open. Do not view directly with optical instruments.

4. REPRODUCTION OF LABEL: CAUTION LABEL, PLACED OUTSIDE THE UNIT.

CAUTION VISIBLE AND/OR INVISIBLE CLASS 1M LASER RADIATION WHEN OPEN. DO NOT VIEW DIRECTLY WITH OPTICAL INSTRUMENTS. REC60825-1:2001 (ENG)	ATTENTION RAYONNEMENT LASER VISIBLE ET/OU INVISIBLE DE CLASSE 1M LORS QU'EST DIRECTEMENT AVEC DES INSTRUMENTS OPTIQUES. (FRA)	AVISO RADIACION LASER DE CLASE 1M VISIBLE Y/O INVISIBLE CUANDO ESTA ABIERTO. NO MIRAR DIRECTAMENTE CON INSTRUMENTAL OPTICO. (ESP)	VARNING SYNLIG OCH/ELLER OSYNLIG LASERSTRÅLNING. KLAS 1M, NÄR DEN ÖPPNAD. BETRÄKTA EJ STRÅLEN MED OPTISKA INSTRUMENT. (SWE)	注意 ここを開くと可視 及び/または不可視 のクラス1M レーザ放射が 発生し、 光学機器で直接 見ないでください。 (JPN)	CAUTION VISIBLE AND/OR INVISIBLE CLASS II LASER RADIATION WHEN OPEN. DO NOT STARE INTO BEAM. FDA 21 CFR (ENG)
--	--	---	---	---	--



Products

Battery

Information for Users on Disposal of Old Equipment and Batteries

[European Union only]

These symbols indicate that the product and the battery with this symbol should not be disposed as general household waste at its end-of-life.

If you wish to dispose of this product and the battery, please do so in accordance with applicable national legislation or other rules in your country and municipality.

By disposing of this product correctly, you will help to conserve natural resources and will help prevent potential negative effects on the environment and human health.

Notice:

The sign Pb below the symbol for batteries indicates that this battery contains lead.

JVC bears no responsibility for any loss of data in an iPod/iPhone and/or USB mass storage class device while using this System.

WARNING:

Stop the car before operating the unit.

Caution:

Adjust the volume so that you can hear sounds outside the car. Driving with the volume too high may cause an accident.

Caution on volume setting:

Digital devices (CD/USB) produce very little noise compared with other sources. Lower the volume before playing these digital sources to avoid damaging the speakers by the sudden increase of the output level.

Caution for DualDisc playback:

The Non-DVD side of a "DualDisc" does not comply with the "Compact Disc Digital Audio" standard. Therefore, the use of Non-DVD side of a DualDisc on this product may not be recommended.

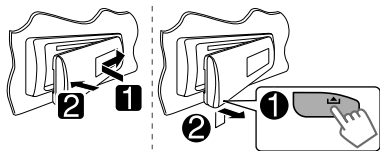
Condensation : When the car is air-conditioned, moisture may collect on the laser lens. This may cause disc read errors. In this case, remove the disc and wait for the moisture to evaporate.

Temperature inside the car : If you have parked the car for a long time in hot or cold weather, wait until the temperature in the car becomes normal before operating the unit.

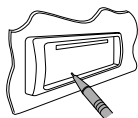




How to attach/detach the control panel



How to reset your unit



Your preset adjustments will also be erased.

How to forcibly eject a disc



- Be careful not to drop the disc when it ejects.
- If this does not work, reset your unit.

Maintenance

Cleaning the unit

Wipe off the dirt on the panel with a dry silicon or soft cloth. Failure to observe this precaution may result in damage to the unit.

Cleaning the connector

Wipe off dirt on the connector of the unit and panel. Use a cotton swab or cloth.

CONTENTS

- 3 How to attach/detach the control panel
- 3 How to reset your unit
- 3 How to forcibly eject a disc
- 3 Maintenance
- 3 About discs
- 4 Canceling the display demonstration
- 4 Setting the clock
- 5 Basic operations
- 6 Listening to the radio
- 8 Listening to a disc
- 9 Connecting the other external components
- 9 Listening to the other external components
- 10 Listening to a USB device
- 11 Listening to an iPod/iPhone
(Available for KD-R521)
- 12 Selecting a preset sound mode
- 13 Menu operations
- 15 Using the remote controller
(For KD-R521/KD-R422/KD-R421: optionally purchased)
- 16 Troubleshooting
- 18 Using Bluetooth® devices
- 19 Specifications

About discs

This unit can only play the CDs with:



Discs that cannot be used:

- Discs that are not round.
- Discs with coloring on the recording surface or discs that are dirty.
- You cannot play a Recordable/ReWritable disc that has not been finalized. (For the finalization process refer to your disc writing software, and your disc recorder instruction manual.)
- 3-inch CD cannot be used. Attempt to insert using an adapter can cause malfunction.

Handling discs:

- Do not touch the recording surface of the disc.
- Do not stick tape etc. on the disc, or use a disc with tape stuck on it.
- Do not use any accessories for the disc.
- Clean from the center of the disc and move outward.
- Clean the disc with a dry silicon or soft cloth. Do not use any solvents.
- When removing discs from this unit, pull them out horizontally.
- Remove the rims from the center hole and disc edge before inserting a disc.



Canceling the display demonstration

Display demonstration will be activated automatically if no operation is done for about 20 seconds.

1 Turn on the power.



4 Select <DEMO OFF>.



6 Finish the procedure.



Setting the clock

1 Turn on the power.



3 Select <CLOCK>.



4 Select <CLOCK SET>.



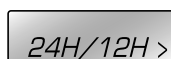
5 Adjust the hour.



6 Adjust the minute.



7 Select <24H/12H>.



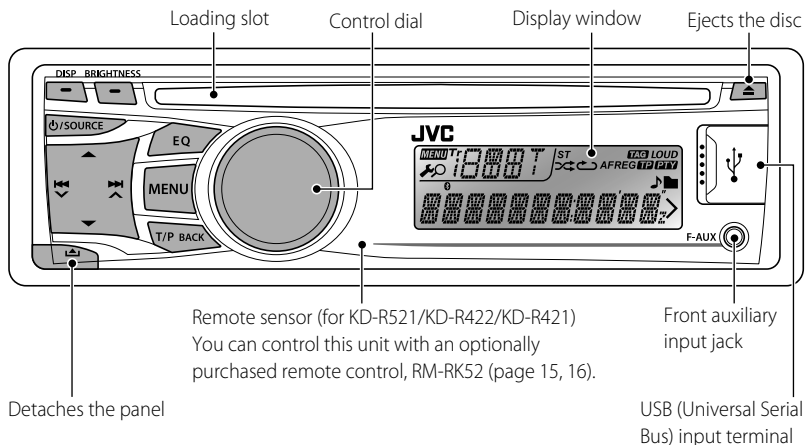
8 Select <24 HOUR> or <12 HOUR>.



9 Finish the procedure.



Basic operations



When you press or hold the following button(s)...

Button	General operation
⏻ / SOURCE	<ul style="list-style-type: none"> • Turns on/off [Hold]. • Selects the sources (FM, CD, USB or USB-IPOD, F-AUX, BT AUDIO or R-AUX or BT PHONE, AM). "CD" or "USB" is selectable only when a disc is loaded or a USB device is connected.
Control dial (turn)	<ul style="list-style-type: none"> • Adjusts the volume level. • Selects items.
Control dial (press)	<ul style="list-style-type: none"> • Mutes the sound during playback. If the source is "CD" or "USB/USB-IPOD" playback pauses. Press the button again to cancel muting or resume playback. • Confirms selection.
EQ	<ul style="list-style-type: none"> • Selects the sound mode. • Enters tone level adjustment directly [Hold]. (page 12)
BRIGHTNESS	Enters <BRIGHTNESS> menu directly. (page 13)
T/P BACK	<ul style="list-style-type: none"> • Activates/deactivates TA Standby Reception. • Enters PTY Searching mode [Hold]. • KD-R521: Selects the controlling terminal of an iPod/iPhone [Hold]. (page 11) • Returns to the previous menu. • Exit from the menu [Hold].
DISP	<ul style="list-style-type: none"> • Changes the display information. • Scrolls the display information [Hold].

KD-R521/KD-R422/KD-R421 is equipped with the steering wheel remote control function.

- For details, refer also to the instructions supplied with the remote adapter.



Listening to the radio

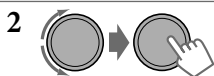


⇒ "FM" or "AM"

- [Press] Searches for stations automatically.
- [Hold] Searches for stations manually. "M" flashes, then press the button repeatedly.

"ST" lights up when receiving an FM stereo broadcast with sufficient signal strength.

Improving the FM reception



⇒ <TUNER> ⇒ <MONO> ⇒ <MONO ON>
Reception improves, but stereo effect will be lost.

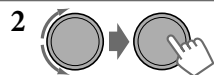
To restore the stereo effect, repeat the same procedure to select <MONO OFF>.

Automatic presetting (FM)—

SSM (Strong-station Sequential Memory)

You can preset up to 18 stations for FM.

While listening to a station...



⇒ <TUNER> ⇒ <SSM> ⇒
<SSM 01 - 06 / 07 - 12 / 13 - 18>
"SSM" flashes and local stations with the strongest signal are searched and stored automatically.

To preset another 6 stations, repeat the above procedure by selecting one of the other SSM setting ranges.

Manual presetting (FM/AM)

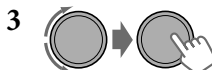
You can preset up to 18 stations for FM and 6 stations for AM.



⇒ Tune in to a station you want to preset.

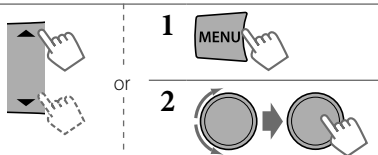


"PRESET MODE" flashes.



⇒ Selects preset number.
Preset number flashes and "MEMORY" appears.

Selecting a preset station



Changing the display information (for non-Radio Data System station)





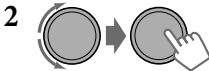
The following features are available only for FM Radio Data System stations.

Searching for your favourite FM Radio Data System programme—PTY Search

You can tune in to a station broadcasting your favourite programme by searching for a PTY code.



The last selected PTY code appears.



⇒ Select one of your favourite programme types or a PTY code, and start searching.

If there is a station broadcasting a programme of the same PTY code as you have selected, that station is tuned in.

PTY codes: NEWS, AFFAIRS, INFO, SPORT, EDUCATE, DRAMA, CULTURE, SCIENCE, VARIED, POP M (music), ROCK M (music), EASY M (music), LIGHT M (music), CLASSICS, OTHER M (music), WEATHER, FINANCE, CHILDREN, SOCIAL, RELIGION, PHONE IN, TRAVEL, LEISURE, JAZZ, COUNTRY, NATION M (music), OLDIES, FOLK M (music), DOCUMENT

Standby receptions

TA Standby Reception

TA Standby Reception allows the unit to switch temporarily to Traffic Announcement (TA) from any source other than AM.

To activate TA Standby Reception



If the TP indicator lights up, TA Standby Reception is activated. If the TP indicator flashes, TA Standby Reception is not yet activated.

- To activate the reception, tune in to another station providing Radio Data System signals required for TA Standby Reception.
- To deactivate the reception, press **T/P BACK** again.

NEWS Standby Reception

NEWS Standby Reception allows the unit to switch temporarily to your NEWS programme from any source other than AM.

To activate NEWS Standby Reception, see <NEWS-STBY>. (page 14)

Tracing the same programme—Network-Tracking Reception

When driving in an area where FM reception is not sufficient enough, this unit automatically tunes in to another FM Radio Data System station of the same network, possibly broadcasting the same programme with stronger signals.

To change the Network-Tracking Reception setting, see <AF-REG>. (page 14)

Automatic station selection—Programme Search

Usually when you select a preset number, the station preset in that number is tuned in. If the signals from the FM Radio Data System preset station are not sufficient for good reception, this unit, using the AF data, tunes in to another frequency possibly broadcasting the same programme as the original preset station is broadcasting.

To activate Programme Search, see <P-SEARCH>. (page 14)

Changing the display information



Station name (PS) → Station Frequency → Programme type (PTY) → Clock → (back to the beginning)



Listening to a disc



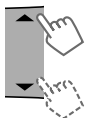
Playback starts automatically.
All tracks will be played repeatedly until you change the source or eject the disc.

Stopping playback and ejecting the disc



If the ejected disc is not removed within 15 seconds, it will automatically reload into the loading slot.

Basic operations



Selects folder of the MP3/WMA.



[Press] Selects track.
[Hold] Fast-forwards or reverses the track.

Changing the display information



Disc title/Album name/performer (folder name)* → Track title (file name)* → Current track number with the elapsed playing time → Current track number with the clock time → (back to the beginning)

*"NO NAME" appears for conventional CDs or if not recorded.

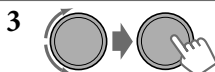
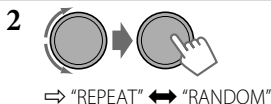
Selecting a track/folder from the list



- If the MP3/WMA disc contains many tracks, you can fast search (± 10 , ± 100) through the disc by turning the control dial quickly.
- To return to the previous menu, press **T/P BACK**.

Selecting the playback modes

You can use only one of the following playback modes at a time.



REPEAT

TRACK RPT : Repeats current track

FOLDER RPT : Repeats current folder

RANDOM

FOLDER RND : Randomly plays all tracks of current folder, then tracks of next folders

ALL RND : Randomly plays all tracks

To cancel repeat play or random play, select "RPT OFF" or "RND OFF."

Connecting the other external components

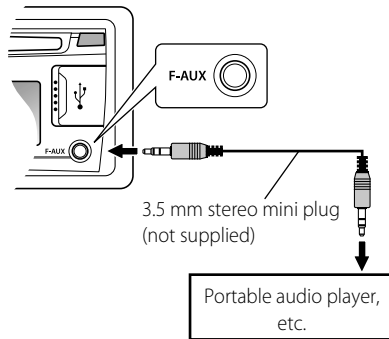
You can connect an external component to the auxiliary input jack on the control panel (F-AUX) and/or on the rear side of the unit (R-AUX).

Summary of using the external components through the auxiliary input jacks:

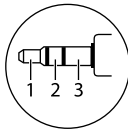
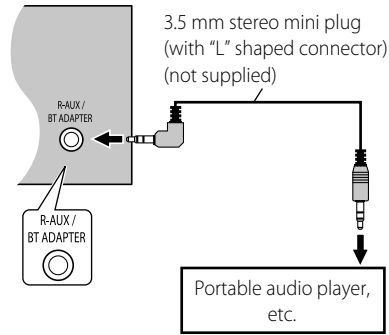
External component	Auxiliary input jack	Preparation			Source name	Connecting cable/device (not supplied)
		Menu setting item	Sub-item	Setting		
Portable audio player	Front	SRC SELECT	F-AUX	ON	F-AUX	See below.
	Rear	SRC SELECT	R-AUX	ON	R-AUX	
Bluetooth device	Rear	SRC SELECT	R-AUX	BT ADAPTER	BT AUDIO/ BT PHONE*	KS-BTA100 (page 18)

*"BT PHONE" appears when a Bluetooth phone is in use.

On the control panel (F-AUX):



On the rear panel (R-AUX):



Recommended to use a 3-terminal plug head stereo mini plug for optimum audio output.

Listening to the other external components

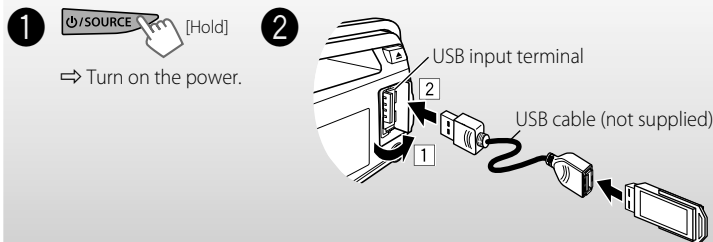
For details, refer also to the instructions supplied with the external components.

- 1  SOURCE
⇒ "F-AUX" or "R-AUX"
- 2 Turn on the connected component and start playing the source.

Listening to a USB device

You can operate the USB device in the same way you operate the files on a disc. (page 8)

- This unit can play MP3/WMA files stored in a USB mass storage class device (such as a USB memory, Digital Audio Player, etc.).



All tracks will be played repeatedly until you change the source or disconnect the USB device.

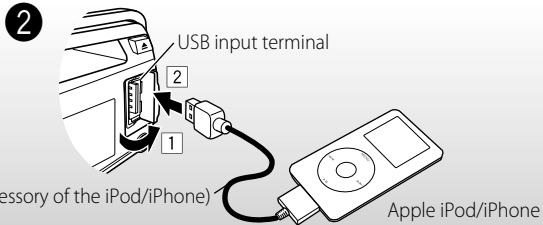
Cautions:

- Make sure all important data has been backed up.
- You cannot connect a computer or portable HDD to the USB input terminal of the unit.
- Avoid using the USB device if it might hinder your safety driving.
- Electrostatic shock at connecting a USB device may cause abnormal playback of the device. In this case, disconnect the USB device then reset this unit and the USB device.
- Do not leave a USB device in the car, expose to direct sunlight, or high temperature to avoid deformation or cause damages to the device.
- This unit may not play back files in a USB device properly when using a USB extension cord.
- USB devices equipped with special functions such as data security functions cannot be used with the unit.
- When connecting a USB cable, use the USB 2.0 cable.
- Do not use a USB device with 2 or more partitions.
- Depending on the shape of the USB devices and connection ports, some USB devices may not be attached properly or the connection might be loose.
- This unit cannot recognize a USB device whose rating is other than 5 V and exceeds 500 mA.
- Do not pull out and attach the USB device repeatedly while "READING" is shown on the display.
- This unit may not recognize a memory card inserted into the USB card reader.
- Connect only one USB device to the unit at a time. Do not use a USB hub.
- Operation and power supply may not work as intended for some USB devices.
- The maximum number of characters for:
 - Folder names : 63 characters
 - File names : 63 characters
 - MP3 Tag : 60 characters
 - WMA Tag : 60 characters
- This unit can recognize a total of 65 025 files, 255 folders (255 files per folder including folder without unsupported files), and of 8 hierarchies.

Listening to an iPod/iPhone

Available for KD-R521

-  **1** [Hold] **SOURCE**
⇒ Turn on the power.



All tracks will be played repeatedly until you change the source or disconnect the iPod/iPhone.

Cautions:

- Avoid using the iPod/iPhone if it might hinder your safety driving.
- Make sure all important data has been backed up to avoid losing the data.

Selecting the control terminal



- ⇒ <HEAD MODE / IPOD MODE / EXT MODE>
- For details, see <IPOD SWITCH> setting on page 15.

Basic operations

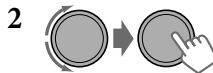
Not applicable under <EXT MODE>.



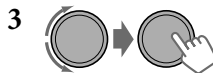
- [Press] Selects track/
chapter.
[Hold] Fast-forwards or
reverses the track.

Selecting a track from the menu

Not applicable under <IPOD MODE / EXT MODE>.



- ⇒ Select the desired menu.
PLAYLISTS ↔ ARTISTS ↔ ALBUMS
↔ SONGS ↔ PODCASTS ↔ GENRES
↔ COMPOSERS ↔ (back to the
beginning)



- ⇒ Select the desired track.
Repeat this step until the desired track
is selected.

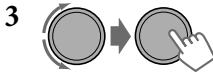
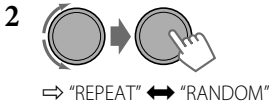
- If the selected menu contains many tracks, you can fast search (± 10 , ± 100 , ± 1000 , ± 10000) through the menu by turning the control dial quickly.
- To return to the previous menu, press **T/P BACK**.

Continued...

ENGLISH | 11

Selecting the playback modes

- You can use only one of the following playback modes at a time.
- Not applicable under <IPOD MODE / EXT MODE>.



REPEAT

ONE RPT : Functions the same as "Repeat One" of the iPod
ALL RPT : Functions the same as "Repeat All" of the iPod

RANDOM

ALBUM RND : Functions the same as "Shuffle Albums" of the iPod
SONG RND : Functions the same as "Shuffle Songs" of the iPod

- To cancel random play, select "RND OFF."
- "ALBUM RND" is not available for some iPod/iPhone.
- To return to the previous menu, press T/P BACK.

Changing the display information



Album name/performer → Track title →
Current track number with the elapsed playing time → Current track number with the clock time → (back to the beginning)

Additional information

- Made for iPod touch (1st, 2nd, and 3rd generation)
iPod classic
iPod with video*
iPod nano (1st*, 2nd, 3rd, 4th, and 5th generation)
iPhone 4
iPhone 3GS
iPhone 3G
iPhone
- * <IPOD MODE / EXT MODE> are not available.
- Update iPod/iPhone software to the latest version. For details, visit <<http://www.apple.com>>.
- It is not possible to browse video files on the "Videos" menu in <HEAD MODE>.
- The song order displayed on the selection menu of this unit may differ from that of the iPod.
- When operating an iPod/iPhone, some operations may not be performed correctly or as intended. In this case, visit the following JVC web site: <<http://www.jvc.co.jp/english/car/>> (English website only).

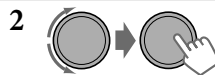
Selecting a preset sound mode

You can select a preset sound mode suitable for the music genre.



FLAT → NATURAL → DYNAMIC → VOCAL
BOOST → BASS BOOST → USER → (back to the beginning)

While listening, you can adjust the subwoofer level and tone level of the selected sound mode.

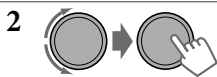


Adjust the level:
SUB.W*: 00 to 08
BASS/ MID/ TRE: -06 to +06
The sound mode is automatically stored and changed to "USER."

* Subwoofer level is adjustable only when <L/O MODE> is set to <SUB.W>. (page 14)

Storing your own sound mode

You can store your own adjustments in memory.



⇒ <PRO EQ> ⇒ <BASS/ MIDDLE/ TREBLE>



Adjust the sound elements (see table below) of the selected tone.

- 4** Repeat steps **2** and **3** to adjust other tones.
The adjustments made is automatically stored and changed to "USER."

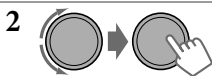
Frequency / Level / Q [Initial: Underlined]

BASS	60/ <u>80</u> / 100/ 200 Hz	-06 to +06 [<u>00</u>]	<u>Q1.0</u> / 1.25/ 1.5/ 2.0
MIDDLE	0.5/ <u>1.0</u> / 1.5/ 2.5 kHz	-06 to +06 [<u>00</u>]	Q0.75/ 1.0/ <u>1.25</u>
TREBLE	<u>10.0</u> / 12.5/ 15.0/ 17.5 kHz	-06 to +06 [<u>00</u>]	<u>Q.FIX</u>

Menu operations



If no operation is done for about 60 seconds, the operation will be canceled.



- 3** Repeat step **2** if necessary.
- To return to the previous menu, press **T/P BACK**.
 - To exit from the menu, press **DISP** or **MENU**.

Menu item		Selectable setting, [Initial: <u>Underlined</u>]
DEMO		For settings, see page 4.
CLOCK	CLOCK SET	For settings, see page 4.
	24H/12H	For settings, see page 4.
	CLOCK ADJ*1	AUTO : The built-in clock is automatically adjusted using the CT (clock time) data in the Radio Data System signal. / OFF : Cancels.
DIMMER	DIMMER SET	AUTO : Changes the display and button illumination between the Day/Night adjustments in <BRIGHTNESS> setting when you turn off/on the car headlights *2. / ON : Selects the Night adjustments in <BRIGHTNESS> setting for the display and button illumination. / OFF : Selects the Day adjustments in <BRIGHTNESS> setting for the display and button illumination.
	BRIGHTNESS	DAY [25] / NIGHT [11] : Selects the display and button illumination brightness level [00 — 31] for day and night.
DISPLAY	SCROLL *3	ONCE : Scrolls the displayed information once. / AUTO : Repeats scrolling (at 5-second intervals). / OFF : Cancels. (Pressing DISP for more than one second can scroll the display regardless of the setting.)
	TAG DISPLAY	ON : Shows the Tag information while playing MP3/WMA tracks. / OFF : Cancels.

*1 Takes effect only when CT (clock time) data is received.

*2 The illumination control lead connection is required. (See "Installation/Connection Manual.") This setting may not work correctly on some vehicles (particularly on those having a control dial for dimming). In this case, change the setting to any other than <DIMMER AUTO>.

*3 Some characters or symbols will not be shown correctly (or will be blanked) on the display.

Continued...

ENGLISH | 13



Menu item	Selectable setting, [<u>Initial</u> : <u>Underlined</u>]
PRO EQ	For settings, see page 13.
AUDIO	FADER *4,*5 R06 — F06 [00] : Adjusts the front and rear speaker output balance.
	BALANCE *5 L06 — R06 [00] : Adjusts the left and right speaker output balance.
	LOUD ON : Boost low and high frequencies to produce a well-balanced sound at a low volume level. / OFF : Cancels.
	VOL ADJUST -05 — +05 [00] : Presets the volume adjustment level of each source (except "FM"), compared to the FM volume level. The volume level will automatically increase or decrease when you change the source. Before adjustment, select the source you want to adjust. ("VOL ADJ FIX" appears on the display if "FM" is selected as the source.)
	L/O MODE *6 SUB.W : Selects if the REAR/SW terminals are used for connecting a subwoofer (through an external amplifier). / REAR : Selects if the REAR/SW terminals are used for connecting the speakers (through an external amplifier).
	SUB.W LPF *7 LOW 55Hz / <u>LOW 85Hz</u> / LOW 120Hz : Frequencies lower than 55 Hz/85 Hz/120 Hz are sent to the subwoofer.
	SUB.W LEVEL *7 00 — 08 [04] : Adjusts the subwoofer output level.
	HPF *6 ON : Activates the High Pass Filter. Low frequency signals are cut off from the front/rear speakers. / OFF : Deactivates (all signals are sent to the front/rear speakers).
	BEEP ON / OFF : Activates or deactivates the keypress tone.
	TEL MUTING *8 ON : Mutes the sounds while using the cellular phone (not connected through KS-BTA100). / OFF : Cancels.
AMP GAIN *9 LOW POWER : VOLUME 00 – VOLUME 30 (Selects if the maximum power of each speaker is less than 50 W to prevent damaging the speakers.) / HIGH POWER : VOLUME 00 – VOLUME 50	
TUNER	SSM Displayed only when the source is "FM." For settings, see page 6.
	AF-REG *10 AF ON : When the currently received signals become weak, the unit switches to another station (the programme may differ from the one currently received). (The AF indicator lights up.) / AF-REG ON : When the currently received signals become weak, the unit switches to another station broadcasting the same programme. (The AF and REG indicators light up.) / OFF : Cancels.
	NEWS-STBY *10 Displayed only when the source is "FM." NEWS ON / <u>NEWS OFF</u> : Activates or deactivates NEWS Standby Reception.
	P-SEARCH *10 SEARCH ON / <u>SEARCH OFF</u> : Activates Programme Search (if AF-REG is turn on) or deactivates.
	MONO Displayed only when the source is "FM." For settings, see page 6.
	IF BAND AUTO : Increases the tuner selectivity to reduce interference noises between adjacent stations. (Stereo effect may be lost.) / WIDE : Subject to interference noises from adjacent stations, but sound quality will not be degraded and the stereo effect will remain.

*4 If you are using a two-speaker system, set the fader level to "00."

*5 For KD-R521/KD-R422/KD-R421: This adjustment will not affect the subwoofer output.

*6 For KD-R521/KD-R422/KD-R421.

*7 For KD-R521/KD-R422/KD-R421: Displayed only when <L/O MODE> is set to <SUB.W>.

*8 This setting does not work if <BT ADAPTER> is selected for <R-AUX> of the <SRC SELECT>.

*9 The volume level automatically changes to "VOLUME 30" if you change to <LOW POWER> with the volume level set higher than "VOLUME 30."

*10 Only for FM Radio Data System stations.





Menu item		Selectable setting, [Initial: Underlined>
IPOD SWITCH*11		HEAD MODE : Controls iPod playback through the unit. / IPOD MODE : Controls iPod playback through the iPod/iPhone. / EXT MODE : The sound of any functions (musics, games, applications, etc.) running on the connected iPod/iPhone is emitted through the speakers connected to this unit. The display always show "EXT MODE."
SRC SELECT	AM*12	ON / OFF : Enable or disable "AM" in source selection.
	F-AUX*12	ON / OFF : Enable or disable "F-AUX" in source selection.
	R-AUX*12	ON / OFF : Enable or disable "R-AUX" in source selection. / BT ADAPTER : Selects if the rear auxiliary input jack is connected to the Bluetooth adapter, KS-BTA100. (page 9) The source name changed to "BT AUDIO."

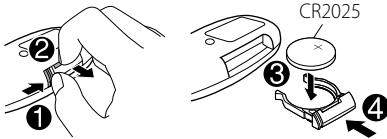
*11 For KD-R521: Displayed only when "USB-IPOD" is selected.

*12 Displayed only when any source other than "AM/ F-AUX/ R-AUX/ BT AUDIO" is selected separately.

Using the remote controller

KD-R521/KD-R422/KD-R421 can be remotely controlled as instructed here (with an optionally purchased remote controller). We recommend that you use remote controller RM-RK52 with your unit.

Installing the lithium coin battery (CR2025)



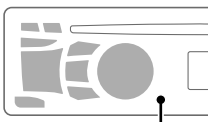
Caution:

- Danger of explosion if battery is incorrectly replaced. Replace only with the same or equivalent type.
- Battery shall not be exposed to excessive heat such as sunshine, fire, or the like.

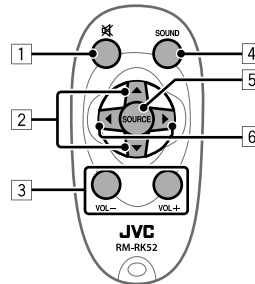
If the effectiveness of the remote controller decreases, replace the battery.

Before using the remote controller:

- Aim the remote controller directly at the remote sensor on the unit.
- DO NOT expose the remote sensor to bright light (direct sunlight or artificial lighting).



Remote sensor



- 1 • Mutes the sound during playback. If the source is "CD" or "USB/USB-IPOD" playback pauses. Press the button again to cancel muting or resume playback.
- 2 • Changes the preset stations.
• Changes the folder of the MP3/WMA.
- 3 • Adjusts the volume level.
- 4 • Selects the sound mode.
- 5 • Selects the source.
- 6 • [Press] Searches for stations automatically.
• [Hold] Searches for stations manually.
• [Hold] Fast-forwards or reverses the track.
• [Press] Changes the tracks/chapters.

Continued...

ENGLISH | 15





Warning (to prevent accidents and damage):

- Do not install any battery other than CR2025 or its equivalent.
- Do not leave the remote controller in a place (such as dashboards) exposed to direct sunlight for a long time.
- Store the battery in a place where children cannot reach.
- Do not recharge, short, disassemble, heat the battery, or dispose of it in a fire.
- Do not leave the battery with other metallic materials.
- Do not poke the battery with tweezers or similar tools.
- Wrap the battery with tape and insulate when throwing away or saving it.

Troubleshooting

	Symptom	Remedy/Cause
General	Sound cannot be heard from the speakers.	Adjust the volume to the optimum level. / Make sure the unit is not muted/paused. (page 5) / Check the cords and connections.
	“MISWIRING CHK WIRING THEN RESET UNIT” appears on the display and no operations can be done.	Check to be sure the terminals of the speaker leads are covered with insulating tape properly, then reset the unit. (page 3) If the message does not disappear, consult your JVC IN-CAR ENTERTAINMENT dealer or a company supplying kits.
	The unit does not work at all.	Reset the unit. (page 3)
	“F-AUX” or “R-AUX” cannot be selected.	Check the <SRC SELECT> → <F-AUX / R-AUX> setting. (page 15)
	Sound is sometimes interrupted while listening to an external component connected to the auxiliary input jack.	Check to be sure the recommended stereo mini plug is used for connection. (page 9)
	The correct characters are not displayed (e.g. album name).	This unit can only display letters (upper case), numbers, and a limited number of symbols.
FM/AM	SSM automatic presetting does not work.	Store stations manually.
	Static noise while listening to the radio.	Connect the aerial firmly.
	“AM” cannot be selected.	Check the <SRC SELECT> → <AM> setting. (page 15)
Disc playback	Disc cannot be played back.	Insert the disc correctly.
	CD-R/CD-RW cannot be played back and track cannot be skipped.	Insert a finalized CD-R/CD-RW (finalize with the component which you used for recording).
	Disc sound is sometimes interrupted.	Stop playback while driving on rough roads. / Change the disc. / Check the cords and connections.
	“NO DISC” appears on the display.	Insert a playable disc into the loading slot.
	“PLEASE” and “EJECT” appear alternately on the display.	Press ▲, then insert a disc correctly.
MP3/WMA playback	“IN DISC” appears on the display.	The disc cannot be ejected properly. Make sure nothing is blocking the loading slot.
	Disc cannot be played back.	Use a disc with MP3/WMA tracks recorded in a format compliant with ISO 9660 Level 1, Level 2, Romeo, or Joliet. / Add the extension code <.mp3> or <.wma> to the file names.
	Noise is generated.	Skip to another track or change the disc.
	“READING” keeps flashing on the display.	A longer readout time is required. Do not use too many hierarchical levels and folders.





	Symptom	Remedy/Cause
MP3/WMA playback	Tracks do not play back in the order you have intended them to play.	The playback order is determined when the files are recorded.
	The elapsed playing time is not correct.	This sometimes occurs during playback. This is caused by how the tracks are recorded on the disc.
	“READING” keeps flashing on the display.	A longer readout time is required. Do not use too many hierarchical levels and folders. / Turn off the power then on again. / Reattach the USB device again.
USB playback	“NO FILE” appears on the display.	Check whether the device contains playable files.
	Noise is generated.	Skip to another file.
	“NOT SUPPORT” appears and track skips.	Check whether the track is a playable file format.
	Tracks/folders are not played back in the order you have intended.	The playback order is determined by the file name. Folders with numbers on the initial of their names are sorted in numerical order. However, folders with no numbers on the initial of their names are sorted according to the file system of the USB device.
	“CANNOT PLAY” flashes on the display. / “NO USB” appears on the display. / The unit cannot detect the USB device.	Check whether the connected USB device is compatible with this unit. / Reattach the USB device again.
	While playing a track, sound is sometimes interrupted.	The tracks have not been properly copied into the USB device. Copy tracks again into the USB device, and try again.
iPod/iPhone playback (For KD-R521)	The iPod does not turn on or does not work.	Check the connecting cable and its connection. / Update the firmware version of the iPod/iPhone. / Charge the battery of the iPod/iPhone. / Reset the iPod/iPhone. / Check whether <IPOD SWITCH> setting is appropriate. (page 15)
	The sound is distorted.	Deactivate the equalizer either on this unit or the iPod/iPhone.
	Noise is generated.	Turn off (uncheck) the “VoiceOver” feature of the iPod. For details, visit < http://www.apple.com >.
	Playback stops.	The headphones are disconnected during playback. Restart the playback operation. (page 11)
	“NO FILE” appears on the display.	Check whether the device contains playable files.
	“CANNOT PLAY” flashes on the display.	Check whether the connected iPod/iPhone is compatible with this unit. (page 12)

Additional information

- This unit can play back multi-session discs; however, unclosed sessions will be skipped while playing.
- This unit can play back files with the extension code <.mp3> or <.wma> (regardless of the letter case—upper/lower).
- This unit can play back the files meeting the conditions below:
 - Bit rate: MP3/WMA: 8 kbps — 320 kbps
 - Sampling frequency:
 - MP3: 48 kHz, 44.1 kHz, 32 kHz, 24 kHz, 22.05 kHz, 16 kHz, 12 kHz, 11.025 kHz, 8 kHz
 - WMA: 48 kHz, 44.1 kHz, 32 kHz, 22.05 kHz
- This unit can show WMA Tag and ID3 Tag Version 1.0/1.1/2.2/2.3/2.4 (for MP3).
- The search function works but search speed is not constant.
- This unit can play back files recorded in VBR (variable bit rate). (Files recorded in VBR have a discrepancy in elapsed time indication.)
- The maximum number of characters for file/folder names vary depending on the disc format used (includes 4 extension characters—<.mp3> or <.wma>).
 - ISO 9660 Level 1 and 2, Romeo: 64 characters, Joliet: 32 characters, Windows long file name: 64 characters
- This unit cannot play back the following files:
 - MP3 files: encoded in MP3i and MP3 PRO format; an inappropriate format; layer 1/2.
 - WMA files: encoded in lossless, professional, and voice format; not based upon Windows Media® Audio; copy-protected with DRM.
 - Files which have data such as AIFF, ATAC3, etc.



Using Bluetooth® devices

For Bluetooth operations, it is required to connect the Bluetooth adapter, KS-BTA100 (not supplied) to the auxiliary input jack (R-AUX/BT ADAPTER) on the rear of the unit. (page 9)

- For details, refer also to the instructions supplied with the Bluetooth adapter and the Bluetooth device.
- Operations may be different according to the connected device.

Preparation

1 Register (pair) a Bluetooth device with KS-BTA100.

Refer to the instructions manual supplied with KS-BTA100.

2 Change the <SRC SELECT> settings of this unit.

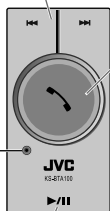


Using the Bluetooth mobile phone



KS-BTA100

Microphone

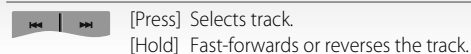


- **Receiving a call**
When a call comes in...
- **Making a call**
Making a call to the last connected number from your phone.
- **Switching between handsfree and phone**
While talking...
- **Ends/rejects call**
- **Voice dialing**
Voice dialing is available only when the connected mobile phone has the voice recognition system.

Using the Bluetooth audio device



If playback does not start, operate the Bluetooth audio player to start playback.



About microphone volume:

- When you turn off the power of the CD receiver, the volume level changes to Normal.

Specifications

AUDIO AMPLIFIER SECTION

Maximum Power Output :

Front/Rear : 50 W per channel

Continuous Power Output (RMS) :

Front/Rear : 20 W per channel into 4 Ω ,
40 Hz to 20 000 Hz at no more than 1% total
harmonic distortion.

Load Impedance : 4 Ω (4 Ω to 8 Ω allowance)

Frequency Response : 40 Hz to 20 000 Hz

Signal-to-Noise Ratio : 70 dB

Line-Out or Subwoofer-Out Level/Impedance

(for KD-R521/KD-R422/KD-R421) :
2.5 V/20 k Ω load (full scale)

Output Impedance : \leq 600 Ω

Other Terminal : USB input terminal, Front
auxiliary input jack, Rear auxiliary/Bluetooth
adapter input jack, Aerial input

TUNER SECTION

Frequency Range :

FM : 87.5 MHz to 108.0 MHz

AM : MW : 531 kHz to 1 611 kHz

LW : 153 kHz to 279 kHz

FM Tuner :

Usable Sensitivity : 9.3 dBf (0.8 μ V/75 Ω)

50 dB Quietening Sensitivity : 16.3 dBf
(1.8 μ V/75 Ω)

Alternate Channel Selectivity (400 kHz) :
65 dB

Frequency Response : 40 Hz to 15 000 Hz

Stereo Separation : 40 dB

MW Tuner :

Sensitivity/Selectivity : 20 μ V/40 dB

LW Tuner :

Sensitivity : 50 μ V

CD PLAYER SECTION

Type : Compact disc player

Signal Detection System : Non-contact optical
pickup (semiconductor laser)

Number of Channels : 2 channels (stereo)

Frequency Response : 5 Hz to 20 000 Hz

Signal-to-Noise Ratio : 98 dB

Wow and Flutter : Less than measurable limit

**MP3 Decoding Format (MPEG1/2 Audio
Layer 3) :** Max. Bit Rate: 320 kbps

WMA (Windows Media® Audio) Decoding

Format : Max. Bit Rate: 192 kbps

USB SECTION

USB Standard : USB 1.1, USB 2.0

Data Transfer Rate (Full Speed) : Max. 12 Mbps

Compatible Device : Mass Storage Class

Compatible File System : FAT 32/16/12

Playable Audio Format : MP3/WMA

Max. Current : DC 5 V \leq 500 mA

GENERAL

Power Requirement : Operating Voltage :

DC 14.4 V (11 V to 16 V allowance)

Grounding System : Negative ground

Allowable Operating Temperature :

0°C to +40°C

Dimensions (W \times H \times D) : (approx.)

–Installation Size :

182 mm \times 52 mm \times 159 mm

–Panel Size :

188 mm \times 59 mm \times 9 mm

Mass : 1.2 kg (excluding accessories)

Subject to change without notice.

Microsoft and Windows Media are either registered trademarks or trademarks of Microsoft Corporation in the United States and/or other countries.

KD-R521:

- “Made for iPod,” and “Made for iPhone” mean that an electronic accessory has been designed to connect specifically to iPod, or iPhone, respectively, and has been certified by the developer to meet Apple performance standards. Apple is not responsible for the operation of this device or its compliance with safety and regulatory standards. Please note that the use of this accessory with iPod, or iPhone may affect wireless performance.
- iPhone, iPod, iPod classic, iPod nano, and iPod touch are trademarks of Apple Inc., registered in the U.S. and other countries.



Merci pour avoir acheté un produit JVC.

Veuillez lire attentivement toutes les instructions avant d'utiliser l'appareil afin de bien comprendre son fonctionnement et d'obtenir les meilleures performances possibles.

IMPORTANT POUR PRODUITS LASER

1. PRODUIT LASER CLASSE 1

2. ATTENTION: N'ouvrez pas le couvercle supérieur. Il n'y a aucune pièce réparable par l'utilisateur à l'intérieur de l'appareil; confiez toute réparation à un personnel qualifié.

3. ATTENTION: Rayonnement laser visible et/ou invisible de classe 1M une fois ouvert. Ne pas regarder directement avec des instruments optiques.

4. REPRODUCTION DE L'ÉTIQUETTE: ÉTIQUETTE DE PRÉCAUTION PLACÉE À L'EXTÉRIEUR DE L'APPAREIL.

CAUTION VISIBLE AND/OR INVISIBLE CLASS 1M LASER RADIATION WHEN OPEN. DO NOT VIEW DIRECTLY WITH OPTICAL INSTRUMENTS. IEC60825-1:2001 (EN3)	ATTENTION RAYONNEMENT LASER VISIBLE ET/OU INVISIBLE DE CLASSE 1M UNE FOIS OUVERT. NE PAS REGARDER DIRECTEMENT AVEC DES INSTRUMENTS OPTIQUES. (FRA)	AVISO RADIACION LASER DE CLASE 1M VISIBLE Y/O INVISIBLE CUANDO ESTA ABIERTO. NO MIRAR DIRECTAMENTE CON INSTRUMENTAL ÓPTICO. (ESP)	VARNING STYMLIG OCH/ELLER OSYMLIG LASERSTRÅLNING KLASS 1M, NÄR DENNA DEL ÄR ÖPPNAD. RETRAKTA EJ STRÅLEN MED OPTISKA INSTRUMENT. (SWE)	注意 ここに示すレーザー光線 及びその放射物類 のクラス1M レーザー放射が 発生し、 光学器具で直接 見ないでください。 (JPN)	CAUTION VISIBLE AND/OR INVISIBLE CLASS II LASER RADIATION WHEN OPEN. DO NOT STARE INTO BEAM. FDA 21 CFR (EN3)
--	--	---	---	--	--



Pile

Produits

Informations relatives à l'élimination des appareils et des piles usagés, à l'intention des utilisateurs

[Union européenne seulement]

Ces symboles signifient que le produit et les piles ne doivent pas être éliminés en tant que déchet ménager à la fin de son cycle de vie.

Si vous souhaitez éliminer ce produit et les piles, faites-le conformément à la législation nationale ou autres règles en vigueur dans votre pays et votre municipalité.

En éliminant correctement ce produit, vous contribuez à la conservation des ressources naturelles et à la prévention des éventuels effets négatifs sur l'environnement et la santé humaine.

Notification:

La marque Pb en dessous du symbole des piles indique que cette pile contient du plomb.

JVC ne peut être tenu responsable pour toute perte de données dans un iPod/iPhone et/ou un périphérique USB à mémoire de grande capacité lors de l'utilisation de ce système.

AVERTISSEMENT:

Arrêtez la voiture avant de manipuler l'appareil.

Attention:

Ajustez le volume de façon à pouvoir entendre les sons extérieurs à la voiture. Conduire avec le volume trop haut peut être la cause d'un accident.

Précautions sur le réglage du volume:

Les appareils numériques (CD/USB) produisent très peu de bruit par rapport aux autres sources. Réduisez le volume avant de reproduire ces sources numériques afin d'éviter d'endommager les enceintes par la soudaine augmentation du niveau de sortie.

Précautions pour la lecture de disques à double face:

La face non DVD d'un disque à "DualDisc" n'est pas compatible avec le standard "Compact Disc Digital Audio". Par conséquent, l'utilisation de la face non DVD d'un disque à double face sur cet appareil n'est pas recommandée.

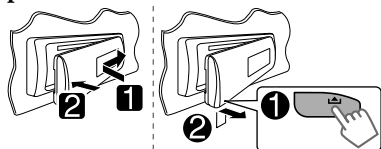
Condensation : Quand une voiture est climatisée, de la condensation peut se produire sur la lentille du laser. Cela peut être la cause d'une erreur de lecture du disque. Dans ce cas, retirez le disque et attendez que l'humidité s'évapore.

Température à l'intérieur de la voiture :

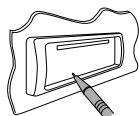
Si votre voiture est restée garée pendant longtemps dans un climat chaud ou froid, attendez que la température à l'intérieur de la voiture redevienne normale avant d'utiliser l'appareil.



Comment attacher/détacher le panneau de commande



Comment réinitialiser votre appareil



Vos ajustements pré-réglés sont aussi effacés.

Comment forcer l'éjection d'un disque



[Maintenez pressée]

- Faites attention de ne pas faire tomber le disque quand il est éjecté.
- Si cela ne fonctionne pas, essayez de réinitialiser l'autoradio.

Entretien

Nettoyage de l'appareil

Essuyez la saleté sur le panneau avec un chiffon sec au silicone ou un chiffon doux. Ne pas respecter ces précautions peut entraîner des dommages à l'appareil.

Nettoyage du connecteur

Essuyez toute les saletés sur le connecteur de l'appareil et le panneau. Utilisez une coton-tige ou un chiffon.

À propos des disques

Cet appareil ne peut lire que les CD comportant :



Disques qui ne peuvent pas être utilisés :

- Disques qui ne sont pas ronds
- Disques avec des colorations sur la surface d'enregistrement ou disques sales
- Vous ne pouvez pas reproduire un disque enregistrable/réinscriptible qui n'a pas été finalisé. (Pour le processus de finalisation, reportez-vous au logiciel utilisé pour graver le disque et au mode d'emploi du graveur de disque.)
- Les CD de 3 pouces ne peuvent pas être utilisés. Essayer d'insérer un disque à l'aide d'un adaptateur peut entraîner un dysfonctionnement de l'appareil.

TABLE DES MATIERES

- 3 Comment attacher/détacher le panneau de commande
- 3 Comment réinitialiser votre appareil
- 3 Comment forcer l'éjection d'un disque
- 3 Entretien
- 3 À propos des disques
- 4 Annulation des démonstrations des affichages
- 4 Réglage de l'horloge
- 5 Opérations de base
- 6 Écoute de la radio
- 8 Écoute d'un disque
- 9 Connexion d'autres appareils extérieurs
- 9 Écoute d'un autre appareil extérieur
- 10 Écoute d'un périphérique USB
- 11 Écoute d'un iPod/iPhone
(Disponible pour le KD-R521)
- 12 Sélection d'un mode sonore pré-réglé
- 13 Utilisation des menus
- 15 Utilisation de la télécommande
(Pour le KD-R521/KD-R422/KD-R421: vendu en option)
- 16 Guide de dépannage
- 18 Utilisation de périphériques Bluetooth®
- 19 Spécifications

Manipulation des disques :

- Ne pas toucher la surface d'enregistrement du disque.
- Ne pas coller de ruban adhésif, etc. sur les disques et ne pas utiliser de disque avec du ruban adhésif collé dessus.
- N'utilisez aucun accessoire pour le disque.
- Nettoyez le disque en partant du centre vers l'extérieur.
- Nettoyez le disque avec un chiffon sec au silicone ou un chiffon doux. N'utilisez aucun solvant.
- Pour retirer les disques de cet appareil, tirez-les horizontalement.
- Retirez les ébarbures du bord du trou central du disque avant d'insérer un disque.