

Having TROUBLE with operation?

Please reset your unit

Refer to page of How to reset your unit

Vous avez des PROBLÈMES de fonctionnement?

Réinitialisez votre appareil

Référez-vous à la page intitulée Comment réinitialiser votre appareil

Dear Customer,
This apparatus is in conformance with the valid European directives and standards regarding electromagnetic compatibility and electrical safety.

European representative of Victor Company of Japan, Limited is:
JVC Technical Services Europe GmbH
Postfach 10 05 04
61145 Friedberg
Germany

Cher(e) client(e),
Cet appareil est conforme aux directives et normes européennes en vigueur concernant la compatibilité électromagnétique et à la sécurité électrique.

Représentant européen de la société Victor Company of Japan, Limited:
JVC Technical Services Europe GmbH
Postfach 10 05 04
61145 Friedberg
Allemagne

JVC

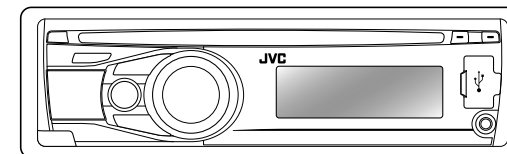
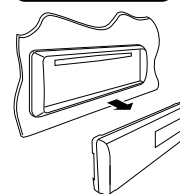
KD-R412 / KD-R411 / KD-R35 / KD-R312 / KD-R311

CD RECEIVER / RÉCEPTEUR CD

ENGLISH

FRANÇAIS

KD-R412/KD-R411/KD-R35

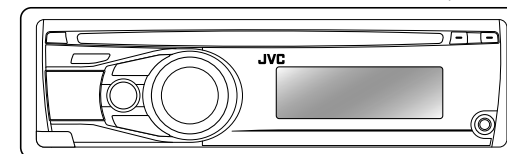


KD-R312/KD-R311



**MP3
WMA**

Radio Data System



For canceling the display demonstration, see page 4. / Pour annuler la démonstration des affichages, référez-vous à la page 4.

For installation and connections, refer to the separate manual. / Pour l'installation et les raccordements, se référer au manuel séparé.

JVC



EN, FR

© 2009 Victor Company of Japan, Limited

1009DTSMDTJEIN

INSTRUCTIONS

MANUEL D'INSTRUCTIONS

GET0624-003A
[E/EU]



Thank you for purchasing a JVC product.

Please read all instructions carefully before operation, to ensure your complete understanding and to obtain the best possible performance from the unit.

IMPORTANT FOR LASER PRODUCTS

1. CLASS 1 LASER PRODUCT

2. **CAUTION:** Do not open the top cover. There are no user serviceable parts inside the unit; leave all servicing to qualified service personnel.

3. **CAUTION:** Visible and/or invisible class 1M laser radiation when open. Do not view directly with optical instruments.

4. REPRODUCTION OF LABEL: CAUTION LABEL, PLACED OUTSIDE THE UNIT.

CAUTION VISIBLE AND/OR INVISIBLE CLASS 1M LASER RADIATION WHEN OPEN. DO NOT VIEW DIRECTLY WITH OPTICAL INSTRUMENTS. REC60825-1:2001 (EN6)	ATTENTION RAYONNEMENT LASER VISIBLE ET/OU INVISIBLE DE CLASSE 1M LORS QU'IL Y A OUVERTURE. NE PAS REGARDER DIRECTEMENT AVEC DES INSTRUMENTS OPTIQUES. (FPA)	AVISO RADIACION LASER DE CLASE 1M VISIBLE Y/O INVISIBLE CUANDO ESTA ABIERTO. NO MIRAR DIRECTAMENTE CON INSTRUMENTAL OPTICA. (ESP)	VARNING SYNLIG OCH/ELLER OSYNLIG LASERSTRÅLNING. KLASS 1M, NÄR DENNA ÄR ÖPPNAD. BETRAKTA EJ STRÅLEN MED OPTISKA INSTRUMENT. (SWS)	注意 この車載ユニットは 見かけ上は不可視 レーザー放射が のクラス1M レーザー放射が 発生し、 光学機器で直接 見ないでください。 (JPN)	CAUTION VISIBLE AND/OR INVISIBLE CLASS II LASER RADIATION WHEN OPEN. DO NOT STARE INTO BEAM. FDA 21 CFR (EN6)
---	---	---	---	--	---



Battery

Products

Information for Users on Disposal of Old Equipment and Batteries **[European Union only]**

These symbols indicate that the product and the battery with this symbol should not be disposed as general household waste at its end-of-life.

If you wish to dispose of this product and the battery, please do so in accordance with applicable national legislation or other rules in your country and municipality.

By disposing of this product correctly, you will help to conserve natural resources and will help prevent potential negative effects on the environment and human health.

Notice:

The sign Pb below the symbol for batteries indicates that this battery contains lead.

Warning:

If you need to operate the unit while driving, be sure to look around carefully or you may be involved in a traffic accident.

For safety...

- Do not raise the volume level too much, as this will block outside sounds, making driving dangerous.
- Stop the car before performing any complicated operations.

Temperature inside the car...

If you have parked the car for a long time in hot or cold weather, wait until the temperature in the car becomes normal before operating the unit.

KD-R412/KD-R411 is equipped with the steering wheel remote control function. Before operating, connect a JVC's OE remote adapter (not supplied) which matches your car to the steering wheel remote input terminal on the rear of the unit.

- For details, refer also to the instructions supplied with the remote adapter.





How to read this manual

The following icons/symbols are used to indicate:

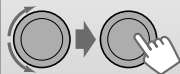


[Hold]

Press and hold the button(s) until the desired operation begins.



Turn the control dial.



Turn the control dial to make a selection, then press to confirm.



Reference page number

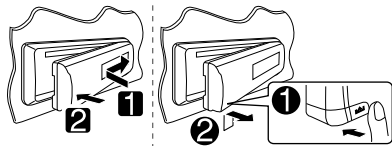


Menu setting item

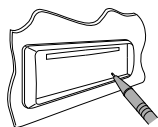


Continued on the next page

How to attach/detach the control panel



How to reset your unit



Your preset adjustments will also be erased.

How to forcibly eject a disc



+



[Hold]

- You can forcibly eject the loaded disc even if the disc is locked. To lock/unlock the disc, 8.
- Be careful not to drop the disc when it ejects.
- If this does not work, reset your unit.

CONTENTS

- 3 How to read this manual
- 3 How to attach/detach the control panel
- 3 How to reset your unit
- 3 How to forcibly eject a disc
- 4 Canceling the display demonstration**
- 4 Setting the clock**
- 5 Basic operations**
- 6 Listening to the radio**
- 8 Listening to a disc**
- 10 Listening to the USB device**
(For KD-R412/KD-R411/KD-R35)
- 11 Listening to the other external components**
- 12 Using the remote controller**
(For KD-R412/KD-R411)
- 13 Selecting a preset sound mode**
- 13 Menu operations**
- 17 More about this unit**
- 20 Maintenance**
- 21 Troubleshooting**
- 24 Specifications**



Canceling the display demonstration

1 Turn on the power.



2 MENU [Hold]



3



4 Select <DEMO OFF>.



5



6 Finish the procedure.



Setting the clock

1 Turn on the power.



2 MENU [Hold]



3 Select <CLOCK>.



4 Select <CLOCK SET>.



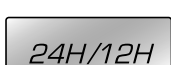
5 Adjust the hour.



6 Adjust the minute.



7 Select <24H/12H>.



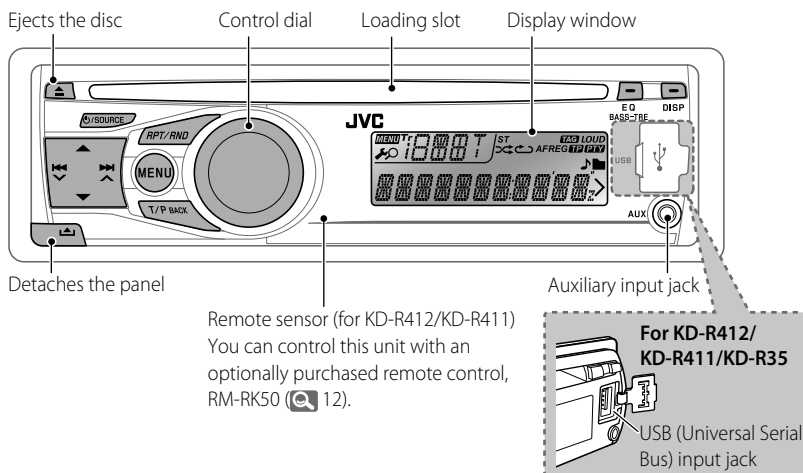
8 Select <24 HOUR> or <12 HOUR>.



9 Finish the procedure.



Basic operations



When you press or hold the following button(s)...

Button	General operation
	<ul style="list-style-type: none"> • Turns on. • Selects the available sources (if the power is turned on). If the source is ready, playback also starts. • Turns off if pressed and held.
	<ul style="list-style-type: none"> • Adjusts the volume level. • Selects items.
	<ul style="list-style-type: none"> • Mutes the sound while listening to a source. If the source is "CD" or "USB," playback pauses. Press the control dial again to cancel muting or resume playback. • Confirms selection.
	<ul style="list-style-type: none"> • Selects the sound mode. • Enters tone level adjustment directly (📞 13) if pressed and held.
	Enters playback mode menu directly (📞 9).
	<ul style="list-style-type: none"> • Returns to the previous menu • Activates/deactivates TA Standby Reception • Enters PTY Searching mode if pressed and held
	Power off : Checks the current clock time Power on : Changes the display information

Listening to the radio



⇒ "FM" or "AM"



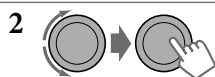
"ST" lights up when receiving an FM stereo broadcast with sufficient signal strength.

Manual search



"M" flashes, then press the button repeatedly.

When an FM stereo broadcast is hard to receive



⇒ <TUNER> ⇒ <MONO> ⇒
<MONO ON>

Reception improves, but stereo effect will be lost.

To restore the stereo effect, repeat the same procedure to select <MONO OFF>.

Changing the display information



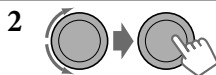
Frequency → **Clock** → (back to the beginning)

Automatic presetting (FM)—

SSM (Strong-station Sequential Memory)

You can preset up to 18 stations for FM.

While listening to a station...



⇒ <TUNER> ⇒ <SSM> ⇒
<SSM 01 – 06> / <SSM 07 – 12> /
<SSM 13 – 18>

"SSM" flashes and local stations with the strongest signals are searched and stored automatically.

To preset another 6 stations, repeat the above procedure by selecting one of the other 6 SSM setting ranges.



Manual presetting (FM/AM)

You can preset up to 18 stations for FM and 6 stations for AM.

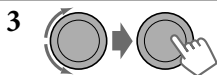
Ex.: Storing FM station of 92.50 MHz into preset number "04."



⇒ "92.50MHz"



"PRESET MODE" flashes.

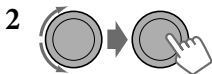


⇒ Selects preset number "04."
"P04" flashes and "MEMORY" appears.

Selecting a preset station



or



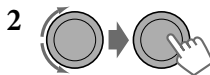
The following features are available only for FM Radio Data System stations.

Searching for your favourite FM Radio Data System programme—PTY Search

You can tune in to a station broadcasting your favourite programme by searching for a PTY code.



The last selected PTY code appears.



⇒ Select one of your favourite programme types or a PTY code (17), and start searching.

If there is a station broadcasting a programme of the same PTY code as you have selected, that station is tuned in.

Standby receptions

TA Standby Reception

TA Standby Reception allows the unit to switch temporarily to Traffic Announcement (TA) from any source other than AM.

- The volume changes to the preset TA volume level if the current level is lower than the preset level (15).

To activate TA Standby Reception



If the TP indicator lights up, TA Standby Reception is activated.

If the TP indicator flashes, TA Standby Reception is not yet activated.

- To activate the reception, tune in to another station providing Radio Data System signals required for TA Standby Reception.
- To deactivate the reception, press **T/P BACK** again.





PTY Standby Reception

PTY Standby Reception allows the unit to switch temporarily to your favourite PTY programme from any source other than AM.

To activate and select your favourite PTY code for PTY Standby Reception, see "Menu operations: <PTY-STANDBY>." (🔍 14)

If the PTY indicator lights up, PTY Standby Reception is activated.

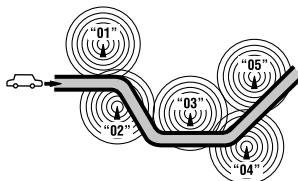
If the PTY indicator flashes, PTY Standby Reception is not yet activated.

- To activate the reception, tune in to another station providing these signals.
- To deactivate the reception, select <PTY OFF> for the PTY code (🔍 14). The PTY indicator goes off.

Tracing the same programme— Network-Tracking Reception

When driving in an area where FM reception is not sufficient enough, this unit automatically tunes in to another FM Radio Data System station of the same network, possibly broadcasting the same programme with stronger signals.

Programme A broadcasting on different frequency areas (01 – 05)



To change the Network-Tracking Reception setting, see "Menu operations: <AF-REG>." (🔍 14)

Automatic station selection— Programme Search

Usually when you select a preset number, the station preset in that number is tuned in. If the signals from the FM Radio Data System preset station are not sufficient for good reception, this unit, using the AF data, tunes in to another frequency possibly broadcasting the same programme as the original preset station is broadcasting.

- See "Menu operations: <P-SEARCH>." (🔍 15)

Changing the display information



Station name (PS) → Station Frequency → Programme type (PTY) → Clock → (back to the beginning)

Listening to a disc

1



⇒ Turn on the power.

2



All tracks will be played repeatedly until you change the source or eject the disc.

Stopping playback and ejecting the disc



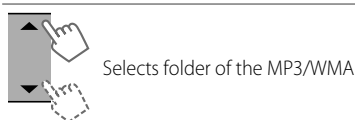
"NO DISC" appears.
Press **SOURCE** to listen to another playback source.

Prohibiting disc ejection



To cancel the prohibition, repeat the same procedure.





Selects folder of the MP3/WMA



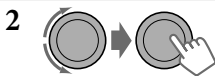
Selects track



[Hold]

Fast-forwards or reverses the track

Selecting a track/folder



For MP3/WMA discs, select the desired folder, then the desired track by repeating step 2.

- To return to the previous menu, press **BACK**.

Caution on volume setting:

Discs produce very little noise compared with other sources. Lower the volume before playing a disc to avoid damaging the speakers by the sudden increase of the output level.

Changing the display information



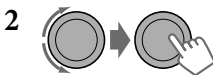
Disc title/Album name/performer (folder name)* → Track title (file name)* → Current track number with the elapsed playing time → Current track number with the clock time → (back to the beginning)

* If the current disc is an audio CD, "NO NAME" appears.

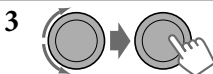
If an MP3/WMA file does not have Tag information or <TAG DISPLAY> is set to <TAG OFF> (📄 14), folder name and file name appear.

Selecting the playback modes

You can use only one of the following playback modes at a time.



⇒ "REPEAT" ↔ "RANDOM"



REPEAT

TRACK RPT : Repeats current track

FOLDER RPT : Repeats current folder

RANDOM

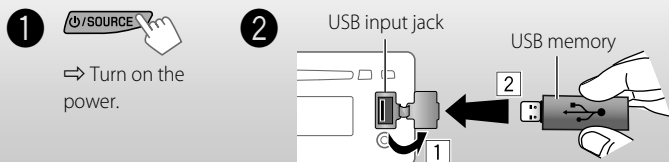
FOLDER RND: Randomly plays all tracks of current folder, then tracks of next folders

ALL RND : Randomly plays all tracks

To cancel repeat play or random play, select "RPT OFF" or "RND OFF."

Listening to the USB device (For KD-R412/KD-R411/KD-R35)

This unit can play MP3/WMA tracks stored in a USB device.



All tracks will be played repeatedly until you change the source or detach the USB device.

If a USB device has been attached...

Pressing **SOURCE** turns on the power and playback starts from where it has been stopped previously.

- If a different USB device is currently attached, playback starts from the beginning.

Stopping playback and detaching the USB device

Straightly pull it out from the unit. "NO USB" appears. Press **SOURCE** to listen to another playback source.

You can operate the USB device in the same way you operate the files on a disc.

Caution on volume setting:

USB devices produce very little noise compared with other sources. Lower the volume before playing a USB to avoid damaging the speakers by sudden increase of the output level.

Cautions:



- Avoid using the USB device if it might hinder your safety driving.
- Do not pull out and attach the USB device repeatedly while "READING" is shown on the display.
- Do not start the car engine if a USB device is connected.
- This unit may not be able to play the files depending on the type of USB device.
- Operation and power supply may not work as intended for some USB devices.
- You cannot connect a computer to the USB input terminal of the unit.
- Make sure all important data has been backed up to avoid losing the data.
- Do not leave a USB device in the car, expose to direct sunlight, or high temperature to avoid deformation or cause damages to the device.
- Some USB devices may not work immediately after attaching USB device or turn on the power.
- For more details about USB operations, see page 19.

Listening to the other external components

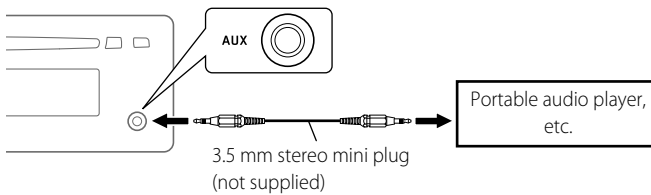
You can connect an external component to the AUX (auxiliary) input jack on the control panel.

Preparation: Make sure <AUX ON> is selected for the <SRC SELECT> → <AUX IN> setting. (🔍 16)

- For details, refer also to the instructions supplied with the adapter or external components.

- 1  ⇒ "AUX IN"
- 2 Turn on the connected component and start playing the source.
- 3  ⇒ Adjust the volume.
- 4 **Adjust the sound as you want.** (🔍 13)

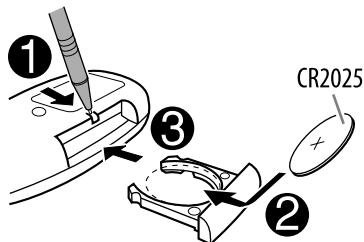
Connecting an external component to the AUX input jack



Using the remote controller (For KD-R412/KD-R411)

KD-R412/KD-R411 can be remotely controlled as instructed here (with an optionally purchased remote controller). We recommend that you use remote controller RM-RK50 with your unit.

Installing the lithium coin battery (CR2025)



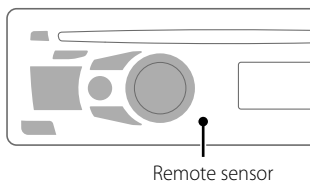
Caution:

- Danger of explosion if battery is incorrectly replaced. Replace only with the same or equivalent type.
- Battery shall not be exposed to excessive heat such as sunshine, fire, or the like.

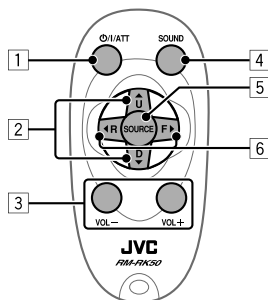
If the effectiveness of the remote controller decreases, replace the battery.

Before using the remote controller:

- Aim the remote controller directly at the remote sensor on the unit.
- DO NOT expose the remote sensor to bright light (direct sunlight or artificial lighting).



Remote sensor



- 1 • Turns the power on if pressed briefly. When the power is on, pressing the button also mutes the sound or pauses. To cancel muting or resume playback, press the same button again.
 - Turns the power off if pressed and held.
- 2 • Changes the preset stations.
 - Changes the folder of the MP3/WMA.
- 3 Adjusts the volume level.
- 4 Selects the sound mode.
- 5 Selects the source.
- 6 • Searches for stations if pressed briefly.
 - Fast-forwards or reverses the track if pressed and held.
 - Changes the tracks if pressed briefly.

Warning (to prevent accidents and damage):

- Do not install any battery other than CR2025 or its equivalent.
- Do not leave the remote controller in a place (such as dashboards) exposed to direct sunlight for a long time.
- Store the battery in a place where children cannot reach.
- Do not recharge, short, disassemble, heat the battery, or dispose of it in a fire.
- Do not leave the battery with other metallic materials.
- Do not poke the battery with tweezers or similar tools.
- Wrap the battery with tape and insulate when throwing away or saving it.

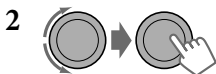
Selecting a preset sound mode

You can select a preset sound mode suitable for the music genre.



FLAT → NATURAL → DYNAMIC → VOCAL BOOST → BASS BOOST → USER → (back to the beginning)

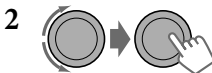
While listening, you can adjust the tone level of the selected sound mode.



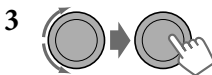
Adjust the level (-06 to +06) of the selected tone (BASS / MIDDLE / TREBLE). The sound mode is automatically stored and changed to "USER."

Storing your own sound mode

You can store your own adjustments in memory.



⇒ <PRO EQ> ⇒ <BASS> / <MIDDLE> / <TREBLE>

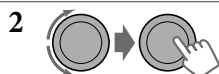


Adjust the sound elements of the selected tone. (🔊 19)

- 4 Repeat steps 2 and 3 to adjust other tones. The adjustments made will be stored automatically in "USER."

The current sound mode changes to "USER" automatically.

Menu operations







- 3 Repeat step 2 if necessary.
- To return to the previous menu, press **BACK**.
 - To exit from the menu, press **DISP** or **MENU**.

Category	Menu item	Selectable setting, [Initial: <u>Underlined</u>]
DEMO	DEMO Display demonstration	<ul style="list-style-type: none"> • <u>DEMO ON</u> : Display demonstration will be activated automatically if no operation is done for about 20 seconds. (🔊 4) • DEMO OFF : Cancels.
	CLOCK SET Clock setting	[<u>0:00</u>] : Adjust the hour, then the minute. (🔊 4)





Category	Menu item	Selectable setting, [Initial: <u>Underlined</u>]
CLOCK	24H/12H Time display mode	<ul style="list-style-type: none"> • 24 HOUR : For settings,  4. • 12 HOUR
	CLOCK ADJ *1 Clock adjustment	<ul style="list-style-type: none"> • <u>AUTO</u> : The built-in clock is automatically adjusted using the CT (clock time) data in the Radio Data System signal. • OFF : Cancels.
PRO EQ	BASS	— : For settings,  13.
	MIDDLE	
	TREBLE	
DISPLAY	DIMMER	<ul style="list-style-type: none"> • DIMMER ON : Dims the display and button illumination. • <u>DIMMER OFF</u> : Cancels.
	SCROLL *2	<ul style="list-style-type: none"> • <u>SCROLL ONCE</u> : Scrolls the displayed information once. • SCROLL AUTO : Repeats scrolling (at 5-second intervals). • SCROLL OFF : Cancels. <p>Pressing DISP for more than one second can scroll the display regardless of the setting.</p>
	TAG DISPLAY	<ul style="list-style-type: none"> • <u>TAG ON</u> : Shows the Tag information while playing MP3/WMA tracks. • TAG OFF : Cancels.
TUNER	SSM *3 Strong-station Sequential Memory	<ul style="list-style-type: none"> • <u>SSM 01 – 06</u> : For settings,  6. • SSM 07 – 12 • SSM 13 – 18
	AF-REG *4 Alternative frequency/regionalization reception	<ul style="list-style-type: none"> • <u>AF ON</u> : When the currently received signals become weak, the unit switches to another station (the programme may differ from the one currently received). (The AF indicator lights up.) • AF-REG ON : When the currently received signals become weak, the unit switches to another station broadcasting the same programme. (The AF and REG indicators light up.) • OFF : Cancels.
	PTY-STANDBY *3,*4	<ul style="list-style-type: none"> • <u>PTY OFF</u>, PTY codes : Activates PTY Standby Reception with one of the PTY codes ( 17).

*1 Takes effect only when CT (clock time) data is received.

*2 Some characters or symbols will not be shown correctly (or will be blanked) on the display.

*3 Displayed only when the source is "FM."

*4 Only for FM Radio Data System stations.





Category	Menu item	Selectable setting, [Initial: <u>Underlined</u>]
TUNER	TA VOLUME *5 Traffic announcement volume	• VOLUME 00 — : — VOLUME 50 (or VOLUME 00 – VOLUME 30)*6 [VOLUME 15]
	P-SEARCH *5 Programme search	• SEARCH ON : Activates Programme Search. (🔍 8) • SEARCH OFF : Cancels.
	MONO *7 Monaural mode	• MONO ON : Activate monaural mode to improve FM reception, but stereo effect will be lost. • MONO OFF : Restore the stereo effect. (🔍 6)
	IF BAND Intermediate frequency band	• AUTO : Increases the tuner selectivity to reduce interference noises between adjacent stations. (Stereo effect may be lost.) • WIDE : Subject to interference noises from adjacent stations, but sound quality will not be degraded and the stereo effect will remain.
AUDIO	FADER *8	R06 – F06 [00] : Adjust the front and rear speaker output balance.
	BALANCE *9	L06 – R06 [00] : Adjust the left and right speaker output balance.
	LOUD Loudness	• LOUD ON : Boost low and high frequencies to produce a well-balanced sound at a low volume level. • LOUD OFF : Cancels.
	AUX ADJUST *10 Auxiliary adjust (For KD-R312/ KD-R311)	AUX ADJ 00 — AUX ADJ 05 : Adjust the auxiliary input level to avoid the sudden increase of the output level when changing the source to external component connected to the AUX input jack on the control panel.

*5 Only for FM Radio Data System stations.

*6 Depends on the amplifier gain control.

*7 Displayed only when the source is "FM."

*8 If you are using a two-speaker system, set the fader level to "00."

*9 For KD-R412/KD-R411/KD-R312/KD-R311: This adjustment will not affect the subwoofer output.

*10 Displayed only when <AUX IN> is set to <AUX ON>.





Category	Menu item	Selectable setting, [Initial: <u>Underlined</u>]
AUDIO	VOL ADJUST Volume adjust (For KD-R412/ KD-R411/KD-R35)	VOL ADJ -05 — : Preset the volume adjustment level of each source (except FM), compared to the FM volume level. The volume level will automatically increase or decrease when you change the source. VOL ADJ +05 [VOL ADJ 00]
	L/O MODE *11 Line output mode	• SUB.W : Select if the REAR LINE OUT terminals are used for connecting a subwoofer (through an external amplifier). • REAR : Select if the REAR LINE OUT terminals are used for connecting the speakers (through an external amplifier).
	SUB.W FREQ *11,*12 Subwoofer cutoff frequency	• LOW : Frequencies lower than 72 Hz are sent to the subwoofer. • MID : Frequencies lower than 111 Hz are sent to the subwoofer. • HIGH : Frequencies lower than 157 Hz are sent to the subwoofer.
	SUB.W LEVEL *11,*12 Subwoofer level	SUB.W 00 — : Adjust the subwoofer output level. SUB.W 08 [SUB.W 04]
	BEEP	• BEEP ON : Activates the keypress tone. • BEEP OFF : Deactivates the keypress tone.
	TEL MUTING Telephone muting	• MUTING 1/ MUTING 2 : Select either one which mutes the sounds while using a mobile phone. • MUTING OFF : Cancels.
	AMP GAIN *13 Amplifier gain control	• LOW POWER : VOLUME 00 – VOLUME 30 (Select if the maximum power of each speaker is less than 50 W to prevent damaging the speakers.) • HIGH POWER : VOLUME 00 – VOLUME 50
SRC SELECT	AM *14 AM station	• AM ON : Enable "AM" in source selection. • AM OFF : Disable "AM" in source selection.
	AUX IN *15 Auxiliary input	• AUX ON : Enable "AUX IN" in source selection. • AUX OFF : Disable "AUX IN" in source selection.

*11 For KD-R412/KD-R411/KD-R312/KD-R311.

*12 Displayed only when <L/O MODE> is set to <SUB.W>.

*13 The volume level automatically changes to "VOLUME 30" if you change to <LOW POWER> with the volume level is set higher than "VOLUME 30."

*14 Displayed only when any source other than "AM" is selected.

*15 Displayed only when any source other than "AUX IN" is selected.



More about this unit

Basic operations

General

- If you turn off the power while listening to a track, playback will start from where it had been stopped previously next time you turn on the power.
- If no operation is done for about 60 seconds after pressing **MENU** button, the operation will be canceled.

Tuner operations

Storing stations in memory

- During SSM search...
 - All previously stored stations are erased and the stations are stored anew.
 - When SSM is over, the station stored in the lowest preset number will be automatically tuned in.
- When storing a station manually, the previously preset station is erased when a new station is stored in the same preset number.

FM Radio Data System operations

- Network-Tracking Reception requires two types of Radio Data System signals—PI (Programme Identification) and AF (Alternative Frequency) to work correctly.
- If a Traffic Announcement is received by TA Standby Reception, the volume level automatically changes to the preset level (TA VOLUME) if the current level is lower than the preset level.
- When Alternative Frequency Reception is activated (with AF selected), Network-Tracking Reception is also activated automatically.
- **PTY codes:** NEWS, AFFAIRS, INFO, SPORT, EDUCATE, DRAMA, CULTURE, SCIENCE, VARIED, POP M (music), ROCK M (music), EASY M (music), LIGHT M (music), CLASSICS, OTHER M (music), WEATHER, FINANCE, CHILDREN, SOCIAL, RELIGION, PHONE IN, TRAVEL, LEISURE, JAZZ, COUNTRY, NATION M (music), OLDIES, FOLK M (music), DOCUMENT

Disc operations

Caution for DualDisc playback

- The Non-DVD side of a "DualDisc" does not comply with the "Compact Disc Digital Audio" standard. Therefore, the use of Non-DVD side of a DualDisc on this product may not be recommended.

General

- This unit has been designed to reproduce CDs/CD Texts, and CD-Rs (Recordable)/CD-RWs (Rewritable) in audio CD (CD-DA), MP3 and WMA formats.
- If you change the source while listening to a disc, playback stops. Next time you select "CD" as the playback source, playback will start from where it had been stopped previously.
- When a disc is inserted upside down, "PLEASE" and "EJECT" appear alternately on the display. Press **▲** to eject the disc.
- If the ejected disc is not removed within 15 seconds, it is automatically inserted into the loading slot again to protect it from dust.
- MP3 and WMA "tracks" (words "file" and "track" are used interchangeably) are recorded in "folders."
- While fast-forwarding or reversing on an MP3 or WMA disc, you can only hear intermittent sounds.

Playing a CD-R or CD-RW

- Use only "finalized" CD-Rs or CD-RWs.
- This unit can only play back files of the same type as those detected first if a disc includes both audio CD (CD-DA) files and MP3/WMA files.
- This unit can play back multi-session discs; however, unclosed sessions will be skipped while playing.





- Some CD-Rs or CD-RWs may not play back on this unit because of their disc characteristics, or for the following reasons:
 - Discs are dirty or scratched.
 - Moisture condensation has occurred on the lens inside the unit.
 - The pickup lens inside the unit is dirty.
 - The files on the CD-R/CD-RW are written using the “Packet Write” method.
 - There are improper recording conditions (missing data, etc.) or media conditions (stained, scratched, warped, etc.).
- CD-RWs may require a longer readout time since the reflectance of CD-RWs is lower than that of regular CDs.
- Do not use the following CD-Rs or CD-RWs:
 - Discs with stickers, labels, or a protective seal stuck to the surface.
 - Discs on which labels can be directly printed by an ink jet printer.Using these discs under high temperature or high humidity may cause malfunctions or damage to the unit.

Playing an MP3/WMA disc

- This unit can play back MP3/WMA files with the extension code <mp3> or <.wma> (regardless of the letter case—upper/lower).
- This unit can show the names of albums, artists (performer), and Tag (Version 1.0, 1.1, 2.2, 2.3, or 2.4) for MP3 files and for WMA files.
- This unit can display only one-byte characters. No other characters can be correctly displayed.
- This unit can play back MP3/WMA files meeting the conditions below:
 - Bit rate:
 - MP3: 32 kbps — 320 kbps
 - WMA: 32 kbps — 192 kbps

- Sampling frequency of MP3:
 - 32 kHz, 44.1 kHz, 48 kHz (for MPEG-1)
 - 16 kHz, 22.05 kHz, 24 kHz (for MPEG-2)
- Sampling frequency of WMA:
 - 22.05 kHz, 32 kHz, 44.1 kHz, 48 kHz
- Disc format: ISO 9660 Level 1/Level 2, Romeo, Joliet, Windows extension
- The maximum number of characters for file/folder names (includes 4 extension characters—<.mp3> or <.wma>): 12 — 128 characters (depending on the media used, etc.).
- This unit can recognize a total of 512 files, 255 folders, and 8 hierarchical levels.
- This unit can play back files recorded in VBR (variable bit rate).
Files recorded in VBR have a discrepancy in the elapsed time display, and do not show the actual elapsed time. In particular, this difference becomes noticeable after performing the search function.
- This unit cannot play back the following files:
 - MP3 files encoded in MP3i and MP3 PRO format.
 - MP3 files encoded in an inappropriate format.
 - MP3 files encoded with Layer 1/2.
 - WMA files encoded in lossless, professional, and voice format.
 - WMA files which are not based upon Windows Media ® Audio.
 - WMA files copy-protected with DRM.
 - Files which have data such as AIFF, ATRAC3, etc.
- The search function works but search speed is not constant.





Playing MP3/WMA tracks from a USB device (for KD-R412/KD-R411/KD-R35)

- While playing from a USB device, the playback order may differ from other players.
- This unit may be unable to play back some USB devices or some files due to their characteristics or recording conditions.
- Depending on the shape of the USB devices and connection ports, some USB devices may not be attached properly or the connection might be loose.
- Connect one USB mass storage class device to the unit at a time. Do not use a USB hub.
- If the connected USB device does not have the correct files, "CANNOT PLAY" appears.
- This unit can show Tag (Version 1.0, 1.1, 2.2, 2.3, or 2.4) for MP3 files and for WMA files.
- This unit can play back MP3/WMA files meeting the conditions below:
 - Bit rate of MP3/WMA: 32 kbps — 320 kbps
 - Sampling frequency of MP3: 32 kHz, 44.1 kHz, 48 kHz (for MPEG-1) 16 kHz, 22.05 kHz, 24 kHz (for MPEG-2)
 - Sampling frequency of WMA: 22.05 kHz, 32 kHz, 44.1 kHz, 48 kHz
- This unit can play back MP3 files recorded in VBR (variable bit rate).
- The maximum number of characters for:
 - Folder names : 32 characters
 - File names : 32 characters
 - MP3 Tag : 64 characters
 - WMA Tag : 32 characters
- This unit can recognize a total of 5 000 files, 255 folders (255 files per folder including folder without unsupported files), and of 8 hierarchies.
- This unit does not support SD card reader.
- This unit cannot recognize a USB device whose rating is other than 5 V and exceeds 500 mA.

- USB devices equipped with special functions such as data security functions cannot be used with the unit.
- Do not use a USB device with 2 or more partitions.
- This unit may not recognized a USB device connected through a USB card reader.
- This unit may not play back files in a USB device properly when using a USB extension cord.
- This unit cannot play back the following files:
 - MP3 files encoded with MP3i and MP3 PRO format.
 - MP3 files encoded in an inappropriate format.
 - MP3 files encoded with Layer 1/2.
 - WMA files encoded in lossless, professional, and voice format.
 - WMA files not based on Windows Media® Audio.

Preset sound mode

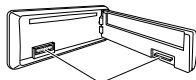
Tone	Sound element		
	Frequency	Level	Q
BASS	60 Hz	-06 to +06	Q1.0
	80 Hz		Q1.25
	100 Hz		Q1.5
	200 Hz		Q2.0
MIDDLE	0.5 kHz	-06 to +06	Q0.75
	1.0 kHz		Q1.0
	1.5 kHz		Q1.25
	2.5 kHz		
TREBLE	10.0 kHz	-06 to +06	Q FIX
	12.5 kHz		
	15.0 kHz		
	17.5 kHz		

Maintenance

How to clean the connectors

Frequent detachment will deteriorate the connectors.

To minimize this possibility, periodically wipe the connectors with a cotton swab or cloth moistened with alcohol, being careful not to damage the connectors.



Connectors

Moisture condensation

Moisture may condense on the lens inside the unit in the following cases:

- After starting the heater in the car.
- If it becomes very humid inside the car.

Should this occur, the unit may malfunction. In this case, eject the disc and leave the unit turned on for a few hours until the moisture has evaporated.

How to handle discs

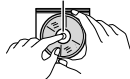
When removing a disc from its case, press down the center holder of the case and lift the disc out, holding it by the edges.

- Always hold the disc by the edges. Do not touch its recording surface.

When storing a disc in its case, gently insert the disc around the center holder (with the printed surface facing up).

- Make sure to store discs in cases after use.

Center holder



To keep discs clean

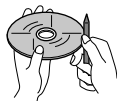
A dirty disc may not play correctly. If a disc does become dirty, wipe it with a soft cloth in a straight line from center to edge.



- Do not use any solvents (for example, conventional record cleaner, spray, thinner, benzene, etc.) to clean discs.

To play new discs

New discs may have some rough spots around the inner and outer edges. If such a disc is used, this unit may reject the disc.



To remove these rough spots, rub the edges with a pencil or ball-point pen, etc.

Do not use the following discs:

Single CD (8 cm disc) 	Warped disc
Sticker and sticker residue 	Stick-on label
Unusual shape 	C-thru Disc (semitransparent disc)
Transparent or semitransparent parts on its recording area 	

Troubleshooting

	Symptom	Remedy/Cause
General	Sound cannot be heard from the speakers.	<ul style="list-style-type: none"> Adjust the volume to the optimum level. Make sure the unit is not muted/paused (🔊 5). Check the cords and connections.
	"PROTECT" appears on the display and no operations can be done.	<p>Check to be sure the terminals of the speaker leads are covered with insulating tape properly, then reset the unit (🔊 3).</p> <p>If "PROTECT" does not disappear, consult your JVC IN-CAR ENTERTAINMENT dealer or a company supplying kits.</p>
	The unit does not work at all.	Reset the unit. (🔊 3)
	"AUX" cannot be selected.	Check the <SRC SELECT> → <AUX IN> setting. (🔊 16)
FM/AM	SSM automatic presetting does not work.	Store stations manually.
	Static noise while listening to the radio.	Connect the aerial firmly.
	"AM" cannot be selected.	Check the <SRC SELECT> → <AM> setting. (🔊 16)
Disc playback	Disc cannot be played back.	Insert the disc correctly.
	<ul style="list-style-type: none"> CD-R/CD-RW cannot be played back. Tracks on the CD-R/CD-RW cannot be skipped. 	<ul style="list-style-type: none"> Insert a finalized CD-R/CD-RW. Finalize the CD-R/CD-RW with the component which you used for recording.
	Disc can neither be played back nor ejected.	<ul style="list-style-type: none"> Unlock the disc. (🔊 8) Eject the disc forcibly. (🔊 3)
	Disc sound is sometimes interrupted.	<ul style="list-style-type: none"> Stop playback while driving on rough roads. Change the disc. Check the cords and connections.
	"NO DISC" appears on the display.	Insert a playable disc into the loading slot.
	"PLEASE" and "EJECT" appear alternately on the display.	Press ▲, then insert a disc correctly.





	Symptom	Remedy/Cause
MP3/WMA playback	Disc cannot be played back.	<ul style="list-style-type: none"> Use a disc with MP3/WMA tracks recorded in a format compliant with ISO 9660 Level 1, Level 2, Romeo, or Joliet. Add the extension code <.mp3> or <.wma> to the file names.
	Noise is generated.	Skip to another track or change the disc. (Do not add the extension code <.mp3> or <.wma> to non-MP3 or WMA tracks.)
	A longer readout time is required ("READING" keeps flashing on the display).	Do not use too many hierarchical levels and folders.
	Tracks do not play back in the order you have intended them to play.	The playback order is determined when the files are recorded.
	For KD-R412/KD-R411/KD-R35: "NO FILE" appears on the display.	Selected folder is an empty folder *. Select another folder that contains MP3/WMA tracks. *Folder that is physically empty or folder that contains data but does not contain valid MP3/WMA track.
	"NOT SUPPORT" appears on the display and track skips.	Skip to the next track encoded in an appropriate format or to the next non-copy-protected WMA track.
	The elapsed playing time is not correct.	This sometimes occurs during playback. This is caused by how the tracks are recorded on the disc.
	The correct characters are not displayed (e.g. album name).	This unit can only display letters (upper case), numbers, and a limited number of symbols.





	Symptom	Remedy/Cause
USB device playback (for KD-R412/KD-R411/KD-R35)	Noise is generated.	The track played back is not an MP3/WMA track. Skip to another file. (Do not add the extension code <.mp3> or <.wma> to non-MP3 or WMA tracks.)
	"READING" keeps flashing on the display.	<ul style="list-style-type: none"> • Readout time varies depending on the USB device. • Do not use too many hierarchy or folders. • Turn off the power then on again. • Reattach the USB device again.
	"NO FILE" appears on the display.	Selected folder is an empty folder*. Select another folder that contains MP3/WMA tracks. * Folder that is physically empty or folder that contains data but does not contain valid MP3/WMA track.
	"NOT SUPPORT" appears on the display and track skips.	Skip to the next track encoded in an appropriate format or to the next non-copy-protected WMA track.
	Tracks/folders are not played back in the order you have intended.	The playback order is determined by the write-in time stamp. The first track/folder written into the USB device will be the first track/folder for playback.
	<ul style="list-style-type: none"> • "CANNOT PLAY" flashes on the display. • "NO USB" appears on the display. • The unit cannot detect the USB device. 	<ul style="list-style-type: none"> • Attach a USB device that contains tracks encoded in an appropriate format. • Reattach the USB device again.
	The correct characters are not displayed (e.g. album name).	This unit can only display letters (upper case), numbers, and a limited number of symbols.
	While playing a track, sound is sometimes interrupted.	The MP3/WMA tracks have not been properly copied into the USB device. Copy MP3/WMA tracks again into the USB device, and try again.

JVC bears no responsibility for any loss of the data in the USB mass storage class device while using this System.



Specifications

AUDIO AMPLIFIER SECTION	Maximum Power Output:	Front/Rear:	50 W per channel	
	Continuous Power Output (RMS):	Front/Rear:	19 W per channel into 4 Ω, 40 Hz to 20 000 Hz at no more than 0.8% total harmonic distortion.	
	Load Impedance:		4 Ω (4 Ω to 8 Ω allowance)	
	Tone Control Range:	Bass:	±12 dB (60 Hz, 80 Hz, 100 Hz, 200 Hz) Q1.0, Q1.25, Q1.5, Q2.0	
		Middle:	±12 dB (0.5 kHz, 1.0 kHz, 1.5 kHz, 2.5 kHz) Q0.75, Q1.0, Q1.25	
		Treble:	±12 dB (10.0 kHz, 12.5 kHz, 15.0 kHz, 17.5 kHz) Q (Fixed)	
	Frequency Response:		40 Hz to 20 000 Hz	
	Signal-to-Noise Ratio:		70 dB	
	Line-Out Level/Impedance:	Except KD-R35:	2.5 V/20 kΩ load (full scale)	
	Subwoofer-Out Level/Impedance:	Except KD-R35:	2.5 V/20 kΩ load (full scale)	
Output Impedance:		1 kΩ		
Other Terminal:		<ul style="list-style-type: none"> • AUX (auxiliary) input jack, Aerial input • For KD-R412/KD-R411: Steering wheel remote input, USB input Jack • For KD-R35: USB input Jack 		
TUNER SECTION	Frequency Range:	FM:	87.5 MHz to 108.0 MHz	
		AM:	MW:	522 kHz to 1 620 kHz
			LW:	144 kHz to 279 kHz
	FM Tuner:	Usable Sensitivity:	9.3 dBf (0.8 μV/75 Ω)	
		50 dB Quieting Sensitivity:	16.3 dBf (1.8 μV/75 Ω)	
		Alternate Channel Selectivity (400 kHz):	65 dB	
		Frequency Response:	40 Hz to 15 000 Hz	
		Stereo Separation:	40 dB	
	MW Tuner:	Sensitivity:	20 μV	
		Selectivity:	40 dB	
LW Tuner:	Sensitivity:	50 μV		



CD PLAYER SECTION	Type:		Compact disc player	
	Signal Detection System:		Non-contact optical pickup (semiconductor laser)	
	Number of Channels:		2 channels (stereo)	
	Frequency Response:		5 Hz to 20 000 Hz	
	Dynamic Range:		93 dB	
	Signal-to-Noise Ratio:		98 dB	
	Wow and Flutter:		Less than measurable limit	
	MP3 Decoding Format: (MPEG1/2 Audio Layer 3)		Max. Bit Rate: 320 kbps	
	WMA (Windows Media® Audio) Decoding Format:		Max. Bit Rate: 192 kbps	
USB SECTION (for KD-R412/ KD-R411/KD-R35)	USB Standard:		USB 1.1, USB 2.0	
	Data Transfer Rate (Full Speed):		Max. 12 Mbps	
	Compatible Device:		Mass storage class	
	Compatible File System:		FAT 32/16/12	
	Playable Audio Format:		MP3/WMA	
	Max. Current:		DC 5 V  500 mA	
GENERAL	Power Requirement:	Operating Voltage:	DC 14.4 V (11 V to 16 V allowance)	
	Grounding System:		Negative ground	
	Allowable Operating Temperature:		0°C to +40°C	
	Dimensions (W × H × D): (approx.)	Installation Size:	182 mm × 52 mm × 160 mm	
		Panel Size:	188 mm × 58 mm × 13 mm	
Mass:		1.3 kg (excluding accessories)		

Design and specifications are subject to change without notice.

Microsoft and Windows Media are either registered trademarks or trademarks of Microsoft Corporation in the United States and/or other countries.

