

# DELPHI SERIES



## FEATURES

- ♦ High efficiency: 96% @ 12V/20A, 25A  
95.5% @ 10.8V/28A
- ♦ Standard footprint: 57.9x 36.8x 12.7mm  
(2.28"x1.45"x0.50")
- ♦ Industry standard pin out
- ♦ Fully protected: UVLO, OTP, OCP, OVP
- ♦ 2250V isolation
- ♦ Basic insulation
- ♦ No minimum load required
- ♦ ISO 9001, TL 9000, ISO 14001, QS 9000, OHSAS 18001 certified manufacturing facility
- ♦ UL/cUL 60950 (US & Canada), and TUV (EN60950) certified
- ♦ CE mark meets 73/23/EEC and 93/68/EEC directives

## Delphi Series Q48SB, 300W Bus Converter DC/DC Power Modules: 48V in, 12V/25A out

The Delphi Series Q48SB, 48V input, single output, quarter brick, 300W bus converters are the latest offering from a world leader in power systems technology and manufacturing -- Delta Electronics, Inc. This product family supports intermediate bus architectures and powers multiple downstream non-isolated point-of-load (POL) converters. The Delphi Series Q48SB operates from a nominal 48V input and provides up to 300W of power or 28A of output current in an industry standard quarter brick footprint. The Q48SB product currently supports two input ranges: the Q48SB120 features an input voltage range of 42V to 53V and provides an unregulated output of 12V at 20A or 25A. The Q48SB108 features a wider input voltage range of 36V to 60V and provides an unregulated output of 10.8V at up to 28A. Typical efficiency for the 12V/25A module is 96%. With optimized component placement, creative design topology, and numerous patented technologies, the Q48SB bus converter delivers outstanding electrical and thermal performance. An optional heatsink is available for harsh thermal requirements.

## OPTIONS

- ♦ Positive On/Off logic
- ♦ Short pin lengths
- ♦ Heatsink available for extended operation

## APPLICATIONS

- ♦ Datacom / Networking
- ♦ Wireless Networks
- ♦ Optical Network Equipment
- ♦ Server and Data Storage
- ♦ Industrial/Testing Equipment

## SPECIFICATIONS

GENERAL SPECIFICATIONS			OUTPUT SPECIFICATIONS			
Input Voltage		42~53V	Voltage Accuracy	Typical	3.5V	
Switching Frequency	Typical	150KHz	Line Regulation	Typical (Q48SB12020)	2.4V	
Isolation Voltage	In/Out	2250V		Typical (Q48SB12025)	2.7V	
Isolation Capacitance	Typical (Q48SB12020)	500pF	Load Regulation	0%~100%	500mV	
	Typical (Q48SB12025)	960pF	Ripple & Noise	20MHz BW Typical	90 mV (Q48SB12020)	
Isolation Resistance	Minimum	10M ohm			100mV (Q48SB12025)	
Size	(Q48SB12020)	57.9x36.8x10.9mm	2.28"x1.45"x0.43"	Current Limits	Typical (Q48SB12020)	25A
	(Q48SB12025)	57.9x36.8x12.7mm	2.28"x1.45"x0.50"		Typical (Q48SB12025)	30A

## PART NUMBERING SYSTEM

Q	48	S	B	120	20	N	R	F	A
Type of Product	Input Voltage	Number of Outputs	Product Series	Output Voltage	Output Current	ON/OFF Logic	Pin Length		Option Code
Q- Quarter Brick	48V	S- Single	B- Bus Converter	120- 12V 108- 9.6V	20- 20A 25- 25A 31- 31A	N- Negative P- Positive	R- 0.170" N- 0.145" K- 0.110"	F- RoHS 6/6 (Lead Free)	A- Standard Functions H- with heat spreader

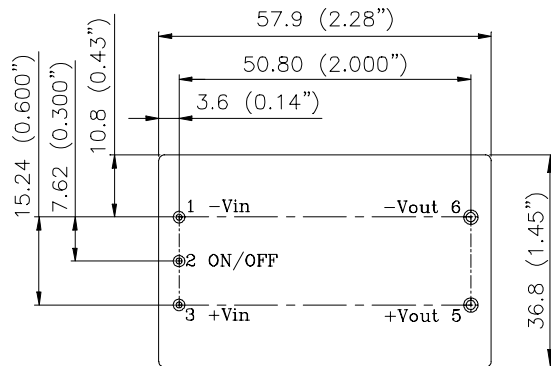
## MODEL LIST

MODEL NAME	INPUT		OUTPUT		EFF @ 100% LOAD
Q48SB10828NRFA	36V~60V	6.3A	9.6V	31A	95.5%
Q48SB12020NRFA	42V~53V	5A	12V	20A	96.0%
Q48SB12025NRFA	42V~53V	6.25A	12V	25A	96.0%

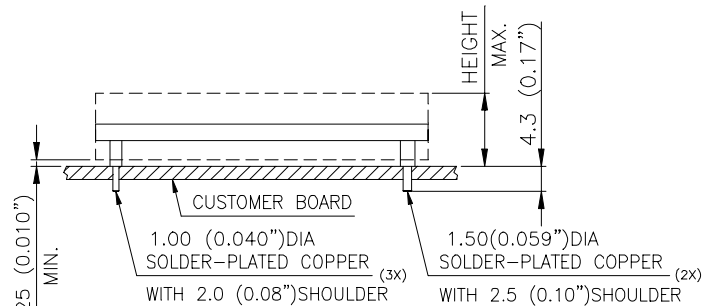
Default remote on/off logic is negative and pin length is 0.170"

For different remote on/off logic and pin length, please refer to part numbering system above or contact your local sales

## MECHANICAL DRAWING



BOTTOM VIEW



SIDE VIEW

### NOTES:

DIMENSIONS ARE IN MILLIMETERS AND (INCHES)

TOLERANCES: X.Xmm±0.5mm(X.XX in.±0.02 in.)

X.XXmm±0.25mm(X.XXX in.±0.010 in.)

MODULE	PACKAGE	HEIGHT MAX.
240W	W/O HEAT SPREADER	10.9 (0.43")
240W	WITH HEAT SPREADER	12.7 (0.50")
300W	W/O HEAT SPREADER	12.7 (0.50")
300W	WITH HEAT SPREADER	14.2 (0.56")

## CONTACT: [www.delta.com.tw/dc dc](http://www.delta.com.tw/dc dc)

### USA:

Telephone:

East Coast: (888) 335 8201

West Coast: (888) 335 8208

Fax: (978) 656 3964

Email: [DCDC@delta-corp.com](mailto:DCDC@delta-corp.com)

### Europe:

Telephone: +41 31 998 53 11

Fax: +41 31 998 53 53

Email: [DCDC@delta-es.tw](mailto:DCDC@delta-es.tw)

### Asia & the rest of world:

Telephone: +886 3 4526107 x 6220

Fax: +886 3 4513485

Email: [DCDC@delta.com.tw](mailto:DCDC@delta.com.tw)

## WARRANTY

Delta offers a two (2) year limited warranty. Complete warranty information is listed on our web site or is available upon request from Delta.

Information furnished by Delta is believed to be accurate and reliable. However, no responsibility is assumed by Delta for its use, nor for any infringements of patents or other rights of third parties, which may result from its use. No license is granted by implication or otherwise under any patent or patent rights of Delta. Delta reserves the right to revise these specifications at any time, without notice.