

FEATURED MODEL

157-160-CR BLANCOTERRA™ Wall mounted Pot Filler in Polished Chrome

ADDITIONAL MODELS

157-160-ST Stainless (Satin Nickel)

157-160-ORB Oil Rubbed Bronze

FEATURES

- Solid brass body
- Ceramic disc cartridge
- Reversible mounting hardware adapts to thick or thin mounting surfaces
- 2.2 G.P.M. flow rate
- Installation in a 1-3/8" hole

CODE/STANDARDS COMPLIANCE

ASME A112.18.1-2005

IAPMO Listed

WARRANTY

Blanco America's Kitchen faucets in Chrome and Satin Nickel feature a LIMITED LIFETIME WARRANTY to be free of all manufacturing defects under normal use. 5-YEAR LIMITED LIFETIME WARRANTY on Oil Rubbed Bronze. See our complete warranty for details.

While Blanco America endeavors to provide accurate information, all dimensions are nominal, cannot be guaranteed, and are subject to change or cancellation. Blanco America assumes no responsibility for use of superseded or voided specifications.

PRODUCT SPECIFICATION

Kitchen wall mounted pot filler faucet to include dual lever handles with solid brass body and ceramic disc cartridge. Faucet dimensions to be as follows: Reach: 20-1/8". Reversible mounting hardware to adapt to thick or thin mounting surfaces. Kitchen faucet to be BLANCOTERRA™ Wall Mounted Pot Filler, Model 157-160-____ in _____ finish.

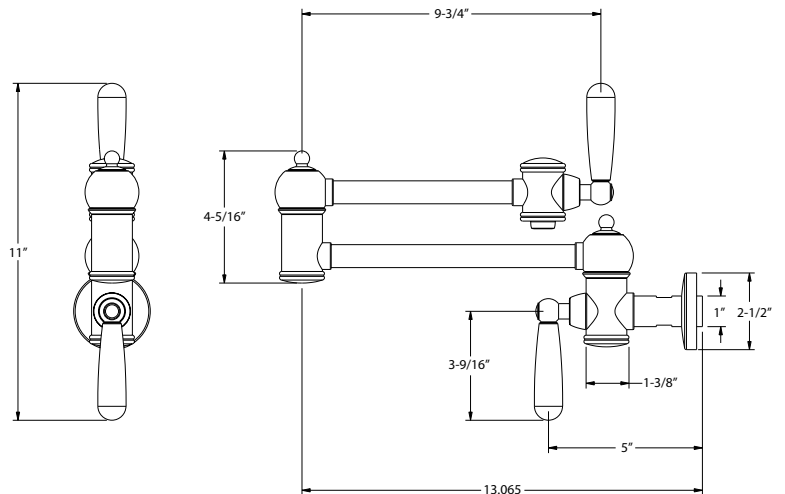
- Polished Chrome 157-160-CR
- Stainless (Satin Nickel) 157-160-ST
- Oil Rubbed Bronze 157-160-ORB



MODEL 157-160

NOMINAL DIMENSIONS

MODEL	REACH
157-160	20-1/8"



See next page for exploded parts drawing and parts list.

JOB INFORMATION

Job Name: _____

Contact: _____

Date Specified: _____

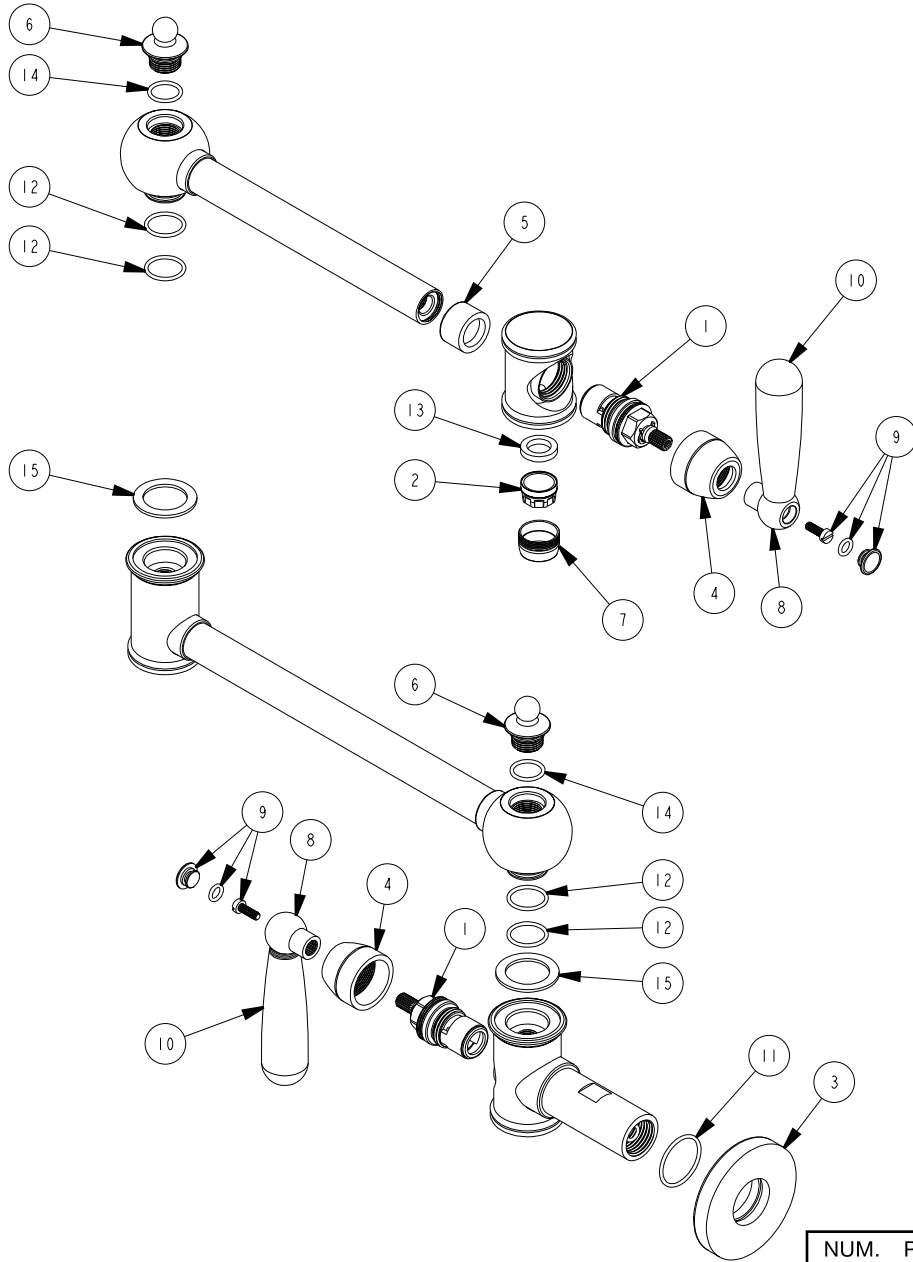
Specifier: _____

Contractor: _____

BLANCO AMERICA
800.451.5782
www.blancoamerica.com

BLANCOTERRA™ WALL MOUNTED POT FILLER

MODEL 157-160



NUM.	PART #	DESCRIPTION
1	02223	20 PT 1/2" CARTRIDGE
2	14468	NEOPEARL AERATOR
3	19048	FLANGE, MOUNTING
4	19600	VALVE BONNET
5	19603	TUBE SLEEVE
6	19608	TOP BUTTON

NUM.	PART #	DESCRIPTION
7	19615	AERATOR HOUSING
8	19747	BLANCO TRAD LEVER HUB
9	19748	CAP, O'RING, SCREW
10	19750	BLANCO TRAD LEVER
11	91061	O'RING, AS-568-022
12	91331	O'RING, AS-568-017
13	91390	WASHER, AERATOR
14	91504	O'RING, AS-568-015
15	91639	WEAR WASHER