

Safety And Regulatory Information

Safety & Regulatory Information

The following sections contain notices for various countries:

Caution

This product is intended for use with FCC/CE certified computer equipment. Please check the equipment operating/installation manual and/or with the equipment manufacturer to verify/confirm if your equipment is suitable prior to the installation or use of the product.

Notice for USA

FCC Part 15: This equipment has been tested and found to comply with the limits for a Class B digital device, pursuant to Part 15 of the FCC Rules. These limits are designed to provide reasonable protection against harmful interference in a residential installation. This equipment generates, uses and can radiate radio frequency energy and, if not installed and used in accordance with the instructions, may cause harmful interference to radio communications. However, there is no guarantee that interference will not occur in a particular installation. If this equipment does cause harmful interference to radio or television reception, which can be determined by turning the equipment off and on, the user is encouraged to try to correct the interference by one or more of the following measures:

- Reorient or relocate the receiving antenna.
- Increase the separation between the equipment and receiver.
- Connect the equipment into an outlet on a circuit different from that to which the receiver is connected.
- Consult the dealer or an experienced radio/TV technician for help.

This device complies with part 15 of the FCC Rules. Operation is subject to the following two conditions:

1. This device may not cause harmful interference, and
2. This device must accept any interference received, including interference that may cause undesired operation.

Caution

To comply with the limits of the Class B digital device, pursuant to Part 15 of the FCC Rules, this device must be installed with computer equipment certified to comply with Class B limits.

All cables used to connect to the computer and peripherals must be shielded and grounded. Operation with non-certified computers or non-shielded cables may result in interference to radio or television reception.

Modification

Any changes or modifications not expressly approved by the grantee of this device could void the user's authority to operate the device.

Notice for Canada

This Class B digital apparatus complies with Canadian ICES-003. Cet appareil numérique de la classe B est conforme à la norme NMB-003 du Canada.

Canadian Class B Statement

This digital device does not exceed the Class B limits for radio noise emissions from digital apparatus as set out in the interference-causing equipment standard entitled "Digital Apparatus," ICES-003 of the Department of Communications.

Cet appareil numérique respecte les limites de bruits radioélectriques applicables aux appareils numériques de Classe B prescrites dans la norme sur le matériel brouilleur: "Appareils Numériques," NMB-003 édictée par le ministre des Communications.

MODIFICATION:

Any changes or modifications not expressly approved by the grantee of this device could void the user's authority to operate the device.

Toute modification non approuvée explicitement par le fournisseur de licence de l'appareil peut entraîner l'annulation du droit de l'utilisateur à utiliser l'appareil.

State of California Proposition 65:

WARNING: Handling this product may expose you to chemicals known to the State of California to cause cancer and birth defects or other reproductive harm.

Wash hands after handling.

Explanatory Note

California Safe Drinking Water and Toxic Enforcement Act of 1986 (Proposition 65) requires special product labeling for products containing certain chemicals known to the State of California to cause cancer, birth defects or other reproductive harm. Creative has chosen to provide a warning based on its knowledge about the presence of one or more listed chemicals without attempting to evaluate the level of exposure. With Creative's products, the exposure may be below the Proposition 65 level of concern, or could even be zero. However, out of an abundance of caution, Creative has elected to place the Proposition 65 warning on its products.

EN English

Specifications

Creative Inspire T6200
 Satellite speaker: **7.5 watts RMS per channel**
 Center Satellite Speaker: **18 watts RMS**
 Subwoofer: **22 watts RMS**
 Signal-to-Noise Ratio: **80dB**
 Frequency Response: **40Hz - 20kHz**

This product operates from the supplied 12V AC 4.2A power adapter or from an integrated power supply.

Important Notice

The serial number for your Creative Inspire T6200 is located on the subwoofer. Please write this number down and keep it in a secure place.

ES Español

Especificaciones

Creative Inspire T6200
 Altavoz auxiliar: **7.5 vatios de carga eficaz por canal**
 Altavoz satélite central: **18 vatios de carga eficaz**
 Altavoz de graves: **22 vatios de carga eficaz**
 Relación de señal a ruido: **80dB**
 Respuesta de frecuencias: **40Hz a 20kHz**

Este producto funciona con el adaptador de alimentación de ca de 12 V y 4.2 A suministrado o con la fuente de alimentación integrada.

Aviso importante

El número de serie para Creative Inspire T6200 se encuentra en el altavoz de graves. Anote este número y guárdelo.

TR Türkçe

Özellikler

Creative Inspire T6200
 Satelit hoparlör: **Kanal başına 7.5 W RMS**
 Orta Satelit hoparlör: **18 watt RMS**
 Subwoofer: **22 watt RMS**
 İşaret-Gürültü Gücü Oranı: **80 dB**
 Frekans Yanıtı: **40 Hz ~ 20 kHz**

Bu ürün 12V AC 4.2A güç adaptörü veya entegre güç kaynağından gelen güçle çalışır.

Önemli

Creative Inspire T6200'un seri numarası subwoofer üzerindedir. Lütfen bu numarayı bir yere not edin ve güvenli bir yerde saklayın.

JP 日本語

仕様

Creative Inspire T6200
 サテライトスピーカー: **7.5W RMS/チャンネル**
 センター衛星スピーカー: **18 watts RMS**
 サブウーファー: **22W RMS**
 SNR(SN比): **80dB**
 周波数特性: **40Hz ~ 20kHz**

この製品は付属の12V AC電源アダプター(4.2A)、または内蔵電源ユニットで駆動します。

注意事項

本製品のシリアルナンバーはサブウーファー上に記載されています。この番号を控えて保存しておいて下さい。

June

© 2008. Creative Technology Ltd. All rights reserved. The Creative logo, CMSS and Creative Inspire are either registered trademarks of Creative Technology Ltd. in the United States and other countries. All other logos, brand or product names are trademarks or registered trademarks of their respective holders and are hereby recognised as such. All specifications are subject to change without notice. Use of this product is subject to a limited warranty. Actual contents may differ slightly from those pictured.

FR Français

Spécifications

Creative Inspire T6200
 Haut-parleur satellite: **7.5 watts RMS par canal**
 Satellite central: **18 watts RMS**
 Caisson de basse: **22 watts RMS**
 Rapport signal/bruit: **80dB**
 Réponse en fréquence: **40Hz - 20kHz**

Ce produit fonctionne avec l'adaptateur d'alimentation fourni de 12 V ca / 4.2 A, ou à partir d'une source d'alimentation intégrée.

Avis important

Le numéro de série de votre Inspire T6200 de Creative se trouve sur le caisson de basses. Veuillez prendre ce numéro en note et le conserver en lieu sûr.

BP Português do Brasil

Especificações

Creative Inspire T6200
 Alto-falante: **RMS de 7.5 watts por canal**
 Altofalante satélite central: **RMS de 18 watts**
 Subwoofer: **RMS de 22 watts**
 Relação sinal/ruído: **80dB**
 Resposta de frequência: **40Hz a 20kHz**

Este produto funciona com um adaptador de alimentação fornecido de 12 V AC de 4.2A, ou com uma fonte de alimentação integrada.

Nota Importante

O número de série do seu Creative Inspire T6200 está localizado no subwoofer. Por favor, tome nota deste número e guarde-o em um lugar seguro.

CT 繁體中文

規格

Creative Inspire T6200
 衛星喇叭: **每聲道 7.5 瓦 RMS**
 中置環繞喇叭: **18 瓦輸出功率**
 重低音音箱: **22 瓦輸出功率**
 訊噪比: **80dB**
 頻率響應: **40Hz ~ 20kHz**

本產品由所提供的 12V AC 4.2A 變壓器或集成電源供電。

重要提示

Creative Inspire T6200 的序號在重低音音箱上。請抄下這個序號並妥善保管。

CS 简体中文

规格

Creative Inspire T6200
 卫星音箱: **额定功率 7.5 瓦(每声道)**
 中置环绕音箱: **额定功率 18 瓦**
 低音炮: **额定功率 22 瓦**
 信噪比: **80dB**
 频率响应: **40Hz ~ 20kHz**

本产品由所提供的 12V AC 4.2A 变压器或者集成电源供电。

重要提示

Creative Inspire T6200 的序列号在低音炮上。请将此序列号记录下来并妥善保存。

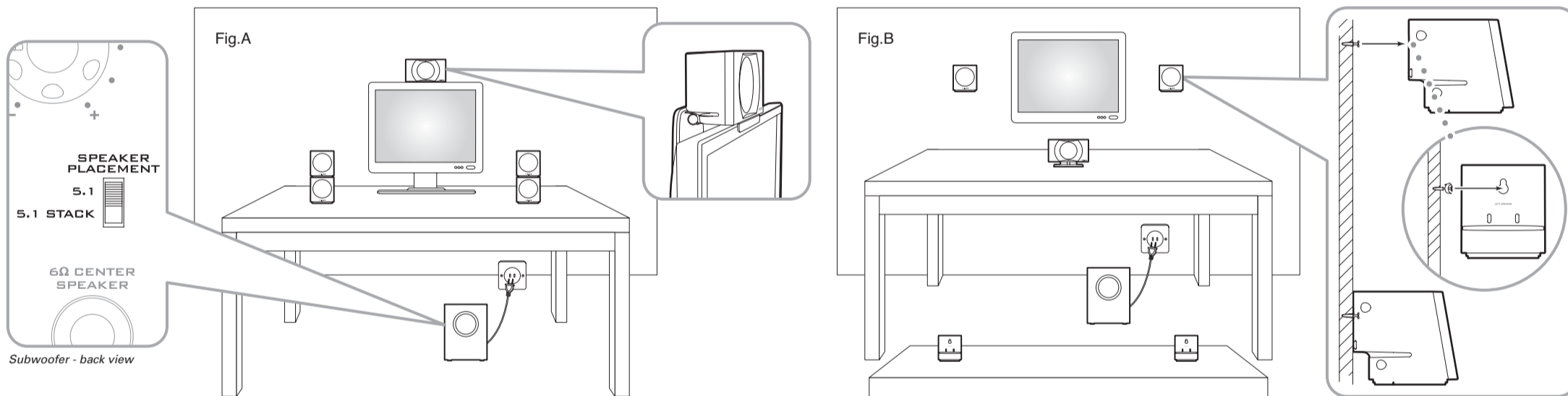
CREATIVE



- EN Quick Start Guide
- FR Démarrage Rapide
- ES Guía Rápida
- BP Introdução rápida
- TR Kullanım
- CT 快速入門指南
- JP クイックスタートガイド
- CS 快速开始指南

INSPIRE™ T6200

P/N 03MF41010000 Rev. A



EN English

Speaker Placement Switch

Fig. A
5.1 Stack
 Rear left & right satellite speakers are stacked on front left & right satellite speakers

Fig. B
5.1
 Rear left & right satellite speakers placed at rear

FR Français

Placement des haut-parleurs

Fig. A
5.1 Placement vertical
 Les haut-parleurs satellites arrière droit et gauche sont empilés sur les haut-parleurs satellites avant droit et gauche

Fig. B
5.1
 Les haut-parleurs satellites arrière droit et gauche sont placés à l'arrière

ES Español

Interruptor de ubicación del altavoz

Fig. A
5.1 Pila
 Los altavoces satélite izquierdo y derecho posteriores se apilan sobre los altavoces satélite izquierdo y derecho anteriores

Fig. B
5.1
 Los altavoces satélite izquierdo y derecho posteriores se colocan en la parte posterior

BP Português do Brasil

Reposicionamento dos alto-falantes

Figura. A
5.1 Empilhamento
 Os alto-falantes satélite esquerdo e direito traseiros são empilhados sobre os alto-falantes satélite esquerdo e direito dianteiros

Figura. B
5.1
 Alto-falantes satélite esquerdo e direito traseiros posicionados atrás

TR Türkçe

Hoparlör Yerleşimi Seçim Düğmesi

Şek. A
5.1 Yığılı
 Arka sol ve sağ uydü hoparlörleri, ön sol ve sağ hoparlörlerin üzerine yığılıdır

Şek. B
5.1
 Arka sol ve sağ uydü hoparlörleri arka tarafa yerleştirilir

CT 繁體中文

喇叭佈局開關

如圖 A 所示
5.1 堆疊
 將後左和後右環繞喇叭堆疊在前左和前右環繞喇叭之上。

如圖 B 所示
5.1
 後置後左和後右環繞喇叭

JP 日本語

スピーカーポジション選択スイッチ

Fig. A参照
5.1 Stack
 リアサテライトスピーカーをフロントサテライトスピーカーと重ねて設置する場合

Fig. B参照
5.1
 リアサテライトスピーカーを後ろに設置する場合

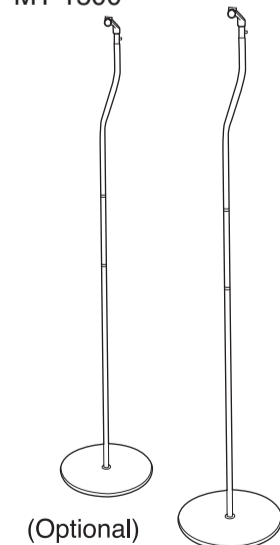
CS 简体中文

音箱布局的选择与转换

图 A
5.1 堆叠式布局
 后左/后右卫星音箱分别堆叠到2个前左/前右卫星音箱上。

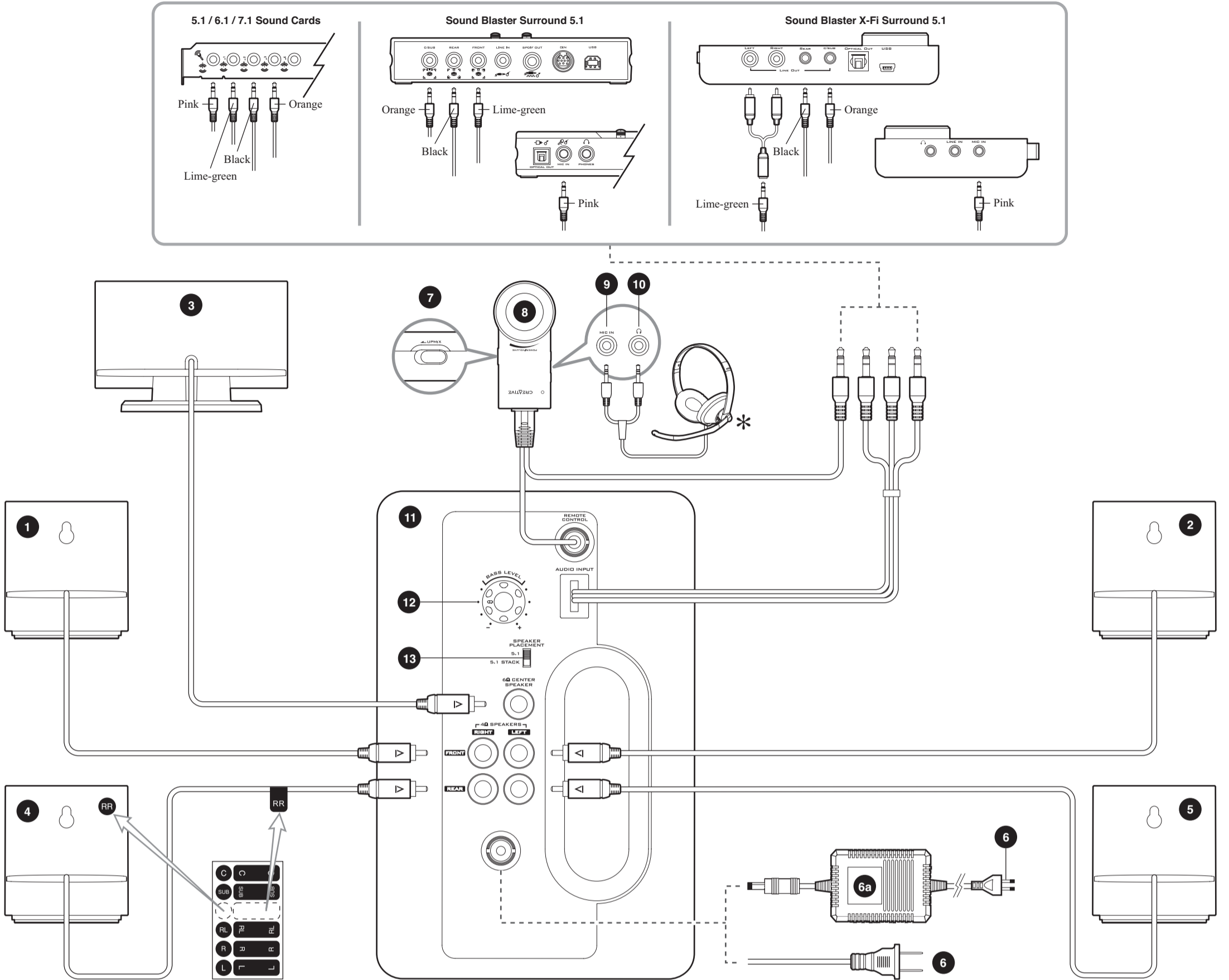
图 B
5.1 传统5.1布局
 后左/后右卫星音箱放置于后部。

MT-1500



(Optional)

- (Optional) Rear satellite floor stands are sold separately. For more information, please refer to <http://www.creative.com>
- (Facultatif) Des socles pour haut-parleurs satellites arrière sont disponibles séparément. Pour plus d'informations, visitez notre site Web à l'adresse <http://www.creative.com>
- (Opcional) Puede adquirir por separado soportes para los altavoces traseros. Para más información, visite nuestro sitio en <http://www.creative.com>
- (Opcional) Os suportes de chão para as caixas acústicas satellites posteriores são vendidos separadamente. Para maiores informações, consulte <http://www.creative.com>
- (Seçenek dahilinde) Arka satellite hoparlör ayakları ayrı olarak satılmaktadır. Daha fazla bilgi için lütfen <http://www.creative.com> adresini ziyaret edin
- (選配) 後置環繞喇叭落地支架需另行選購。詳情請訪問 <http://www.creative.com>
- リアスピーカー用フロアスタンドはオプション(別売り)です。詳細は弊社ウェブサイト <http://www.creative.com>を参照して下さい。
- (选购件)后置音箱落地支架单独出售。详情请访问 <http://www.creative.com>



* • Optional (sold separately) • Facultatif (vendu séparément) • Opcional (se vende por separado) • Opcional (vendido separadamente) • Isteğe bağlı (ayrı olarak satılır) • 選購配件 (另行購買) • オプション (別売) • 选购件 (另行购买)

	EN English	FR Français	ES Español	BP Português do Brasil	TR Türkçe	CT 繁體中文	JP 日本語	CS 简体中文
1	Front Right Satellite Speaker	Satellite avant droit	Altavoz auxiliar derecho frontal	Alto-falante de satélite frontal direito	Sağ ön satellite hoparlör	前右環繞喇叭	フロント右サテライトスピーカー	前右环绕音箱
2	Front Left Satellite Speaker	Satellite avant gauche	Altavoz auxiliar izquierdo frontal	Alto-falante de satélite frontal esquerdo	Sol ön satellite hoparlör	前左環繞喇叭	フロント左サテライトスピーカー	前左环绕音箱
3	Centre Satellite Speaker	Satellite central	Altavoz auxiliar central	Alto-falante de satélite central	Orta satellite hoparlör	中置環繞喇叭	センターサテライトスピーカー	中置环绕音箱
4	Rear Right Satellite Speaker	Satellite arrière droit	Altavoz auxiliar derecho posterior	Alto-falante de satélite traseiro direito	Sağ arka satellite hoparlör	後右環繞喇叭	リア右サテライトスピーカー	后右环绕音箱
5	Rear Left Satellite Speaker	Satellite arrière gauche	Altavoz auxiliar izquierdo posterior	Alto-falante de satélite traseiro esquerdo	Sol arka satellite hoparlör	後左環繞喇叭	リア左サテライトスピーカー	后左环绕音箱
6	To Wall Outlet (Disconnect when not in use for several days)	Vers la prise murale (Déconnectez le système si vous n'avez pas l'intention de l'utiliser pendant plusieurs jours)	A la toma de corriente (desconéctelo cuando no se vaya a utilizar durante varios días)	Para Tomada Elétrica (Desconectar quando não estiver em uso por vários dias)	Duvar çıkışı (Birkaç gün kullanılmayacak ise bağlantıyı kesin)	至牆壁插座 (長時間不用時請拔下電源插頭)	ACコンセントへ接続 (数日間使用しない時はコンセントを抜いて下さい)	至牆壁插座 (長時間不用請拔下電源插頭)
6a	Power Supply Adapter (Types of adapter may vary in different countries)	Adaptateur d'alimentation (le modèle peut varier selon le pays)	Adaptador de alimentación (los tipos de adaptadores pueden variar según el país)	Adaptador de Fonte de Alimentação (Os tipos de adaptador podem variar em diferentes países)	Güç kaynağı adaptörü (Adaptör tipinin ülkelere göre farklılık gösterebilir)	變壓器 (不同國家, 變壓器類型可能不同)	ACアダプター (付属のACアダプター以外は使用しないで下さい)	變壓器 (不同國家, 變壓器類型可能不同)
7	Upmix Switch To create a spacious 5.1 soundfield from stereo sources	Bouton de mixage Pour créer un vaste champ acoustique 5.1 à partir de vos sources stéréo	Interruptor de mezclas Para crear un campo de sonido 5.1 espacioso a partir de fuentes estéreo	Chave de mixagem Para criar um amplo campo sonoro de fontes estéreo 5.1	Upmix Düğmesi Stereo kaynaklardan geniş bir 5.1 ses alanı yaratmak için	Upmix 開關 可將立體聲音源 upmix 至更具空間感的 5.1 音場	アップミックススイッチ ステレオソースから豊かな5.1サウンドフィールドを作り出します。	上混开关 將立體聲音源轉換為5.1環繞空間音效
8	Power/Volume Switch (The system is always connected to the mains)	Bouton alimentation/volume (le système reste connecté en permanence aux haut-parleurs principaux)	Interruptor de alimentación/volumen (el sistema siempre está conectado a la red eléctrica)	Chave Liga/desliga e de volume (O sistema fica conectado constantemente à rede elétrica)	Güç/Ses Düğmesi (Sistem her zaman prize takılıdır)	電源/音量開關 (總是將系統連接至電源)	電源/ボリュームスイッチ (システムはメインのサブウーファーに接続されています)	電源/音量旋鈕 (系統总是与电源相连)
9	Mic In	Entrée micro	Entrada de micrófono	Entrada do microfone	Mic Girişi	麥克風輸入	マイク入力端子	麦克风输入
10	Headphones Output	Sortie casque	Salida de auriculares	Saída Para Auscultadores	Kulaklık Jakı	耳機輸出	ヘッドフォン出力端子	耳机输出
11	Subwoofer	Caisson de basse	Subwoofer	Subwoofer	Subwoofer	低音喇叭	サブウーファー	低音炮
12	Bass Level Control	Bouton de réglage des basses	Control de nivel de graves	Controle do nível de graves	Bas seviye kontrolü	低音級數控制	バスレベルコントロール	低音音量控制
13	Speaker Placement Switch	Placement des haut-parleurs	Interruptor de ubicación del altavoz	Reposicionamento dos alto-falantes	Hoparlör Yerleşimi Seçim Düğmesi	喇叭佈局開關	スピーカーポジション選択スイッチ	音箱布局的选择与转换