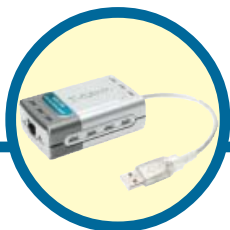


D-Link

Quick Installation Guide

This product can be used with:
Windows XP, Windows 2000,
Windows Me, and Windows 98SE



DUB-E100

USB 2.0 Fast
Ethernet Adapter

Before You Begin:

You will need the following:

- Windows XP, 2000, Me, or 98SE, 200MHz or above based computer with a minimum of 32MB RAM, a CD-ROM drive, and an available USB port.

Check Your Package Contents



DUB-E100 USB 2.0 Fast Ethernet Adapter



CD-ROM (Software, Manual and Warranty)

If any of the above items are missing, please contact your reseller.

1

Connecting the DUB-E100 to Your Computer

Plug the DUB-E100's USB cable into an available USB port on your computer.

Windows will detect new hardware and prompt you for the drivers. Follow the steps below and then proceed to the Driver Installation section on the following pages.



Attach an Ethernet cable to the Ethernet port on the DUB-E100.



Attach the other end of the Ethernet cable to your network switch, hub, or router.

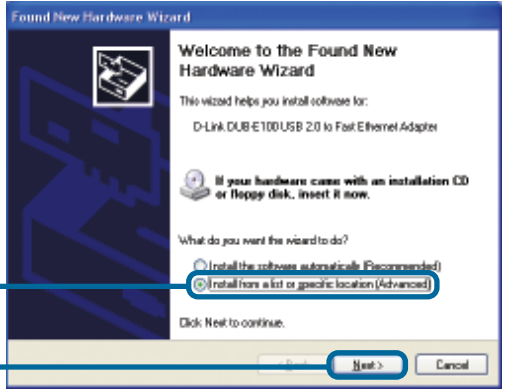


2

Installing the Drivers

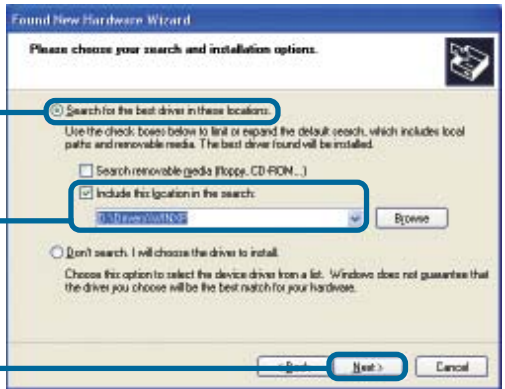
The installation process varies slightly for each Windows operating system. Proceed to the appropriate installation section for your Windows operating system.

Windows XP



Select **Install from a list or specific location (Advanced)**

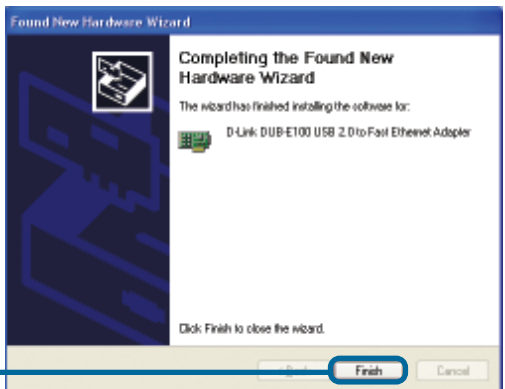
Click **Next**



Select **Search for the best driver in these locations.**

Click **Include this location in the search:** and type **D:\Drivers\WINXP** (where D: represents your CD-ROM drive letter).

Click **Next**



Click **Finish**

Windows XP driver installation is complete. Please proceed to page 10.

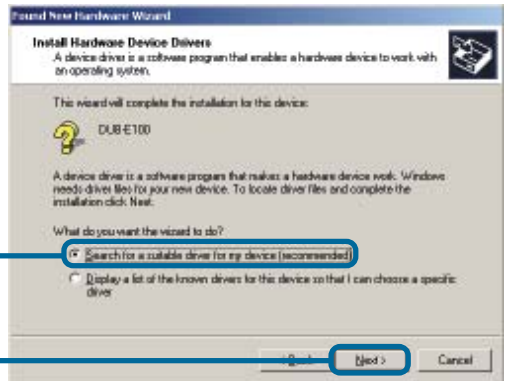
2

Installing the Drivers (continued)

Windows 2000

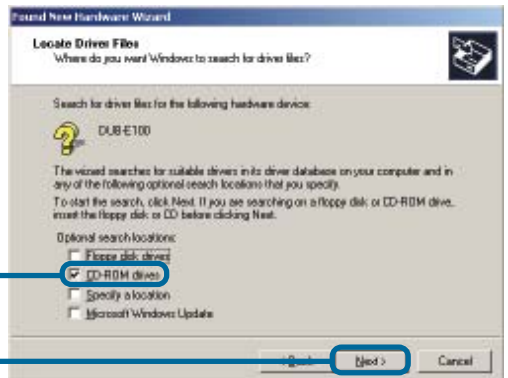


Click **Next**



Select **Search for a suitable driver for my device (recommended)**

Click **Next**

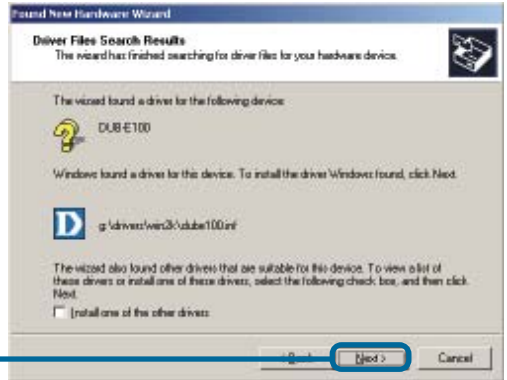


Select **CD-ROM drives**

Click **Next**

2

Installing the Drivers (continued)



Click **Next**



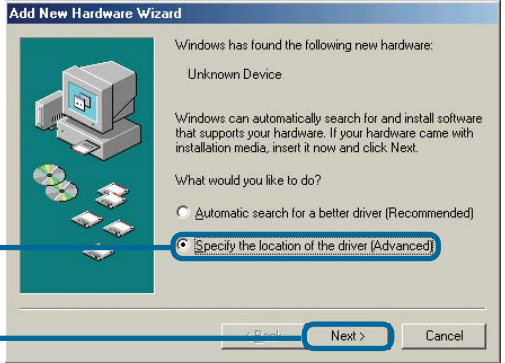
Click **Finish**

Windows 2000 driver installation is complete. Please proceed to page 10.

2

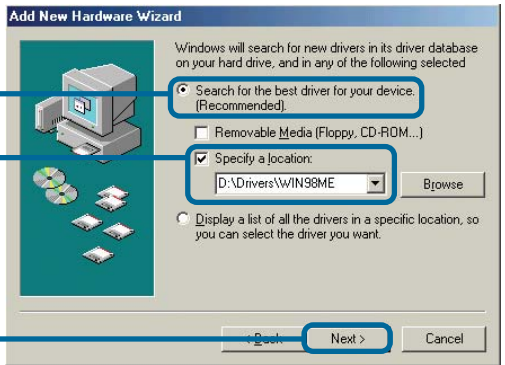
Installing the Drivers (continued)

Windows Me



Select Specify the location of the driver (Advanced)

Click Next



Select Search for the best driver for your device (Recommended)

Select Specify a location: and type D:\Drivers\Win98ME (where D: represents your CD-ROM drive letter).

Click Next



Click Next

2

Installing the Drivers (continued)



If prompted, restart your computer to complete the installation.
Windows Me driver installation is complete. Please proceed to page 10.

2

Installing the Drivers (continued)

Windows 98SE

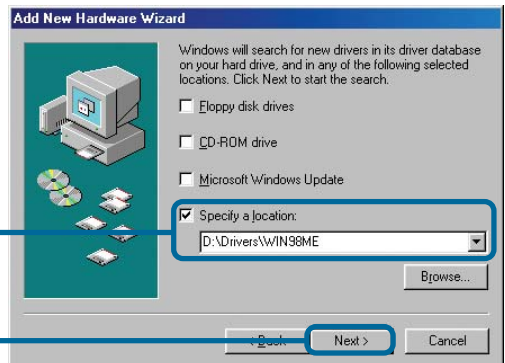


Click **Next**



Select **Search for the best driver for your device (Recommended)**

Click **Next**



Select **Specify a location:** and type **D:\Drivers\Win98ME** (where D: represents your CD-ROM drive letter).

Click **Next**

2

Installing the Drivers (continued)



Windows begins copying the necessary files onto your computer. You may be prompted to provide the original Windows 98SE CD-ROM. If so, insert the CD-ROM and click OK. If necessary, provide the path to the CD-ROM, such as **D:\WIN98** (where **D:** is your CD-ROM drive letter).

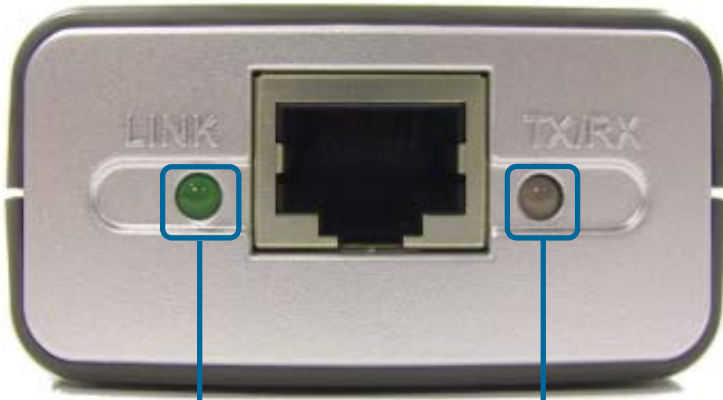


If prompted, restart your computer to complete the installation. Windows 98 driver installation is complete.

3

Installation is Complete!

Installation of the DUB-E100 is complete. The LINK LED should be solid green, indicating a good physical connection between the DUB-E100 and the network. The TX/RX LED indicates when data is being transmitted or received. If both LEDs are unlit, there may be a problem with the physical connection. Check the cables between your DUB-E100, the computer, and the network. Verify that your network switch, hub, or router is powered on.



LINK LED:

Lights up solid green when the DUB-E100 has a good physical connection to the network.

TX/RX LED:

Flashes green when data is transmitted/received at 100Mbps. When data is transmitted/received at 10Mbps the LED flashes amber.

4

Frequently Asked Questions

1. Can I use my DUB-E100 on a USB 1.1 port?

The DUB-E100 will work on a USB 1.1 port but the transfer speeds will be limited to the limitations of USB 1.1. If your computer does not have USB 2.0 ports, you can purchase an add-in USB 2.0 PCI adapter to add USB 2.0 functionality to your computer.

D-Link® offers the following USB 2.0 adapters:

- **DU-520** (5 Port USB 2.0 PCI Adapter) for desktop computers.
- **DUB-A2** (2-Port USB 2.0 PCI Adapter) for desktop computers.
- **DUB-C2** (2-Port USB 2.0 Cardbus Adapter) for laptops computers.

2. Do I need to use a crossover cable or straight-through cable?

With most of D-Link's new switches/routers, the Ethernet ports are Auto MDI-II/MDI-X. This means the port will auto-sense the cable type. Auto MDI-II/MDI-X ports may react differently if the Ethernet cable is not properly pinned. If you make your own cables, it is very important that they follow the industry standard pin-out (568A and 568B).

Computer connections to a hub, switch, or router typically use a straight-through cable. When connecting a computer to another computer or to an uplink port then a cross-over cable is typically required. Rule of Thumb: *"If there is a link light, the cable is right."*

3. How do I verify that my DUB-E100 is properly installed?

You can verify that the adapter has been properly installed in Device Manager:

Windows 98 and Me

- Right click on the **My Computer** icon and select **Properties**.
- Go to the **Device Manager** tab.
- Expand the **Network Adapters** heading by clicking on the plus (+) sign next to Network Adapters.
- The D-Link USB DUB-E100 should appear with a green and gold network adapter symbol.

Windows XP and 2000

- Right click on the **My Computer** icon and select **Properties**.
- Go to the **Hardware** tab and click on the **Device Manager** button.
- Expand the **Network Adapters** heading by clicking on the plus (+) sign next to Network Adapters.
- The D-Link USB DUB-E100 should appear with a green and gold network adapter symbol.

If the D-Link USB DUB-E100 in device manager appears with a bright yellow exclamation mark or a red x, please contact D-Link Technical Support.

Technical Support

You can find software updates and user documentation on the D-Link website.

D-Link provides free technical support for customers within the United States and within Canada for the duration of the warranty period on this product.

U.S. and Canadian customers can contact D-Link technical support through our website, or by phone.

Tech Support for customers within the United States:

D-Link Technical Support over the Telephone:

(877) 453-5465

24 hours a day, seven days a week

D-Link Technical Support over the Internet:

<http://support.dlink.com>

email:support@dlink.com

Tech Support for customers within Canada:

D-Link Technical Support over the Telephone:

(800) 361-5265

Monday to Friday 7:30am to 12:00am EST

D-Link Technical Support over the Internet:

<http://support.dlink.ca>

email:support@dlink.ca

D-Link[®]
Building Networks for People