

# ***Nikon***

Browser Software for  
COOLPIX Digital Cameras

**Nikon View Ver.3**  
for Windows

**Reference Manual**

**Overview**

**Browsing Image Files**

**Working with Image Files**

**Preference**

**Nikon View Reference**

 **Click**  
to go



Welcome to Nikon View Ver.3 for Windows (below, “Nikon View”), browser software for the COOLPIX 990/950/800/700/900 series (below, “[COOLPIX digital] camera(s)”). The Nikon View camera drivers and browser allow rapid, easy access to camera image files when the camera is connected to a computer. With Nikon View, the camera functions as one of your computer’s drives, making it possible to apply standard Windows operations to the image files in the camera’s memory card. Once you have installed Nikon View and mastered its simple operations, you’ll be able to distribute your digital image files by disk or electronic mail, or include them in your home page and other documents you create for business or personal use.

Nikon View’s principal features are listed below.

- camera drivers for COOLPIX digital cameras, which allow you to connect your camera to either the USB port or the serial port (SC-EW3 cable sold separately) of a computer and access the camera’s memory card in much the same way as you would an ordinary disk drive
- a browser function that makes it possible to preview at a glance all the image files stored in your camera’s memory card, and to select items for editing, deletion, or transfer to disk

- support of OLE 2.0 Drag-and-Drop, making it easy to copy images files to disk, open them in other applications, or insert them in documents
- simple operation featuring one-touch toolbars and menus
- photographs can be opened in any application that supports JPEG or TIFF for retouching or to be saved in another format, allowing you to use photographs as wallpaper for your desktop or distribute them with electronic mail
- movie files can be played in any application that supports Apple QuickTime movie format
- if you have a compact flash-memory card reader or a PCMCIA card slot and card adapter, the camera’s compact flash-memory card can be browsed even when not inserted in the camera



## Terminology used in this manual

A new feature of Nikon View Ver.3 is its ability to support movie files created with the COOLPIX 990 digital camera. As you read this *Reference Manual*, keep in mind that most functions introduced apply to both still image files and movie files. Where this is the case, “image file(s)” will be used to refer to both types of files. Specific references to “still image(s)” or “photograph(s)”, or “movie(s)” apply only to the file type mentioned.



This manual will guide you, step-by-step, through the process of using Nikon View with your COOLPIX digital camera. For details on Nikon View installation and system requirements, refer to the *Quick Start Guide*.

## The Manual Layout

The contents of each chapter are outlined below.

### **Overview**

Describes Nikon View's features and outlines the contents of this manual

### **Getting Started—Browsing Image Files**

Introduces basic techniques for browsing image files with Nikon View

### **Working with Image Files**

Details the process of viewing image files, opening them in other applications, and saving them to disk

### **Preference**

Discusses camera type, port and data transfer rate settings adjustment

### **Nikon View Reference**

A handy reference guide to Nikon View's menu bar and toolbar

## With Different Operating Systems

The illustrations and explanations in this manual are for Windows 98. Display and operation may differ under Windows 2000, Windows 98, Windows 98SE, Windows NT 4.0, Windows 95, or when Active Desktop is used with Windows 95. Refer to the manuals provided with your operating system.

## Working Knowledge

This manual assumes a basic understanding of common Windows operations. If you are in doubt about the meaning of terms used here, refer to your Windows manual.



Printing this manual

For ease of reference, this *Reference Manual* can be printed using the **Print...** command in the Adobe Acrobat Reader **File** menu.



To make it easier to find the information you need, the following symbols and conventions are used:

## About

A table of contents appears on the first page of the *Reference Manual*. In addition, each chapter begins with an outline of the topics covered. Click on the heading to open the *Reference Manual* to the indicated chapter or section.



Click this icon at the bottom right corner of each page for an explanation of the symbols and conventions used in this manual.



Blue text indicates a link to another part of this *Reference Manual*. To follow the link, click the blue text.



This icon signifies the need for caution when using the product. These indications are placed in sections that should be read before operation to prevent damage to the product.



This icon marks notes, information that you should read before using your camera.



This icon marks tips, additional information you may find helpful when using your camera.



This icon marks references to other documentation or to another part of this manual.



This icon marks short-cuts.



# Browsing Image Files

Once you have installed the NikonView software as described in the *Quick Start Guide*, Nikon View allows you to use the camera's memory card in much the same way that you would use any other drive. This chapter describes how to browse the image files in the camera's memory card directly from the camera, from a compact flash-memory card reader, or from disk.

**Browsing Image Files From Your Camera**

**Browsing Image Files From a Card Reader**

**Browsing Image Files on Disk**

**Displaying Image Files as a List**

**Browsing in the Windows Explorer**


 **Click**  
to go

## **Browsing Image Files From Your Camera**

You can use Nikon View to browse the image files stored in your camera's memory card and display them as thumbnails.

Follow these steps to view image files stored in your digital camera's memory card.

- 1** Connect the camera to your computer as described in the documentation provided with your camera.



Nikon View supports one camera, attached to a USB port or serial (COM 1–4) port. It does not support multiple connected cameras or port-extension boards.

### **Automatic Operation (only with cameras which support USB connection)**

If your camera is connected to a USB port as described in the documentation provided with your camera, and the computer is on, the Digital Camera window will open and close automatically as described below:

#### **Opening the window**

If you insert a memory card in the camera, and turn the camera on, the Digital Camera window will open automatically to display a list of folders containing image files that have already been recorded. Proceed to step 4.

#### **Closing the window**

The Digital Camera window will close automatically if you do any of the following:

- Turn the camera off
- Remove the memory card from the camera
- Disconnect the USB cable

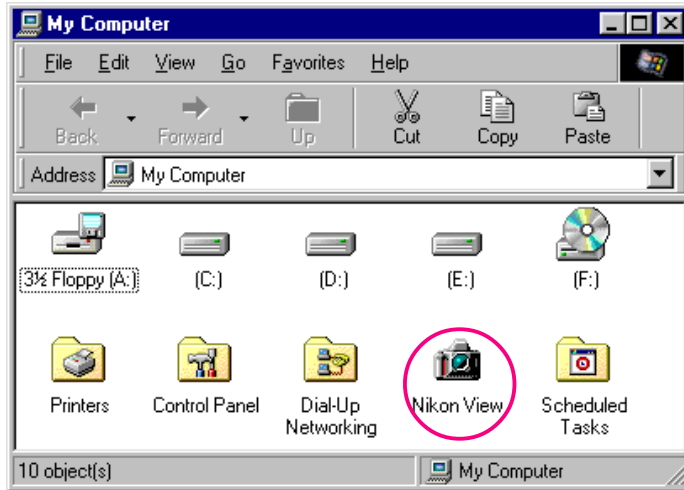
#### **Reopening the window**

The Digital Camera window will re-open automatically if you do any of the following:

- Turn the camera off and then on
- Remove and re-insert the memory card
- Disconnect and re-connect the USB cable

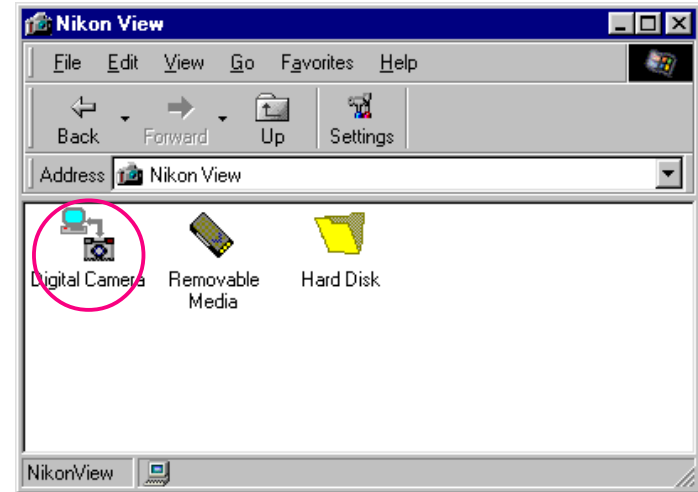


- 2 After turning on your computer, double-click the **Nikon View** icon in the My Computer window.



The Nikon View window will open.

- 3 Double-click the **Digital Camera** icon.



### ✓ Caution!

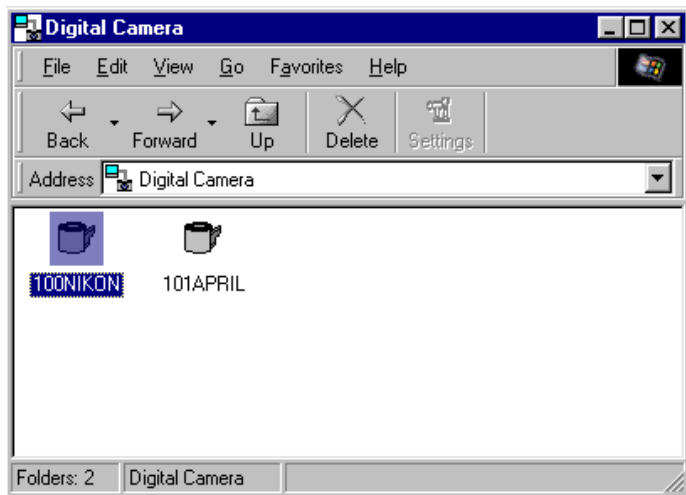
The borders of the shutter-speed/aperture display in the camera's control panel flash on and off in a "marching ants" marquee while the computer communicates with the camera. The display continues for up to sixty seconds after the transfer of data is complete. Do not disconnect the camera until the borders of the display stop flashing. (The data-transfer display varies according to your camera model.)



Data-transfer display  
(COOLPIX 990)

The camera will not function as a network drive. Consequently, the **Nikon View** icon will not be visible to other computers.

- 4 Folders saved in the camera's memory card are represented by a roll film icon.

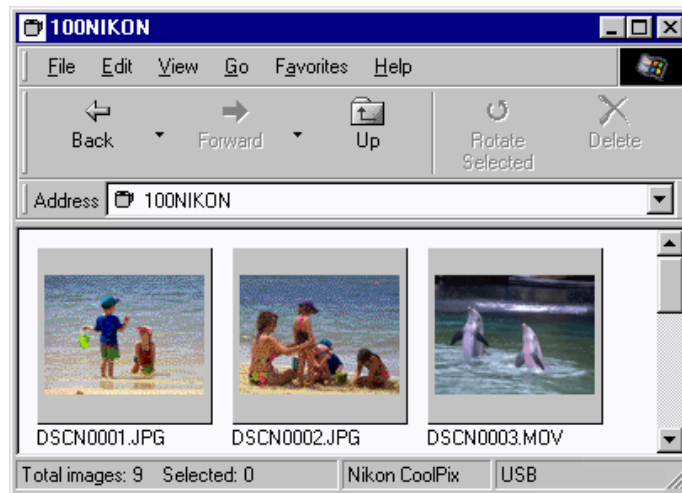


Double-click the folder icon.

### Folder Names

When displayed in Nikon View, folders created with the camera are prefixed by a three digit folder number. Thus, the default folder, which when viewed from the camera menus has the name "NIKON" is displayed in Nikon View as "100NIKON". Each folder can hold up to 999 image files. If this number is exceeded, the camera will create a new folder with the same name but a different prefix (e.g., "101NIKON"). When viewed on a computer, folders with the same name but a different prefix appear as separate folders. When viewed from the camera menus, however, folders with the same name appear to be the same folder, although the full folder name with prefix appears in the photo information display in playback mode.

The image files in the selected folder will appear as thumbnail images.



From this thumbnail view, still images can be viewed at full resolution, printed, copied or deleted. In addition, movie files can be played, copied or deleted. See the following chapter for details.



The camera's memory card is treated as "read-only" when browsing in Nikon View. Files can not be copied from other folders to the browsing window, nor can files be saved to the camera after editing in another application. The file names displayed in the browsing window can not be changed. Should you wish to change a file name, do so after copying the image file to disk.





## Connection error

If the computer is unable to establish connection with the camera, the following dialog box will appear.



After clicking **OK** to close the dialog box, check to be sure that:

- the camera is correctly connected to the computer
- the camera's selector dial is not set to **OFF**
- the USB or serial cable is connected correctly as described in the documentation provided with the computer and the camera
- no other hardware is connected to the selected port
- the camera's batteries are inserted correctly
- the batteries are not exhausted or dead
- if you are using the AC adapter (sold separately), it is properly connected

This connection error dialog box will also appear if you specified the wrong port during installation. Choose the proper camera type in the Digital Camera Settings dialog box.



For more information on:

[Changing Camera Type, Port and Rate Settings](#)



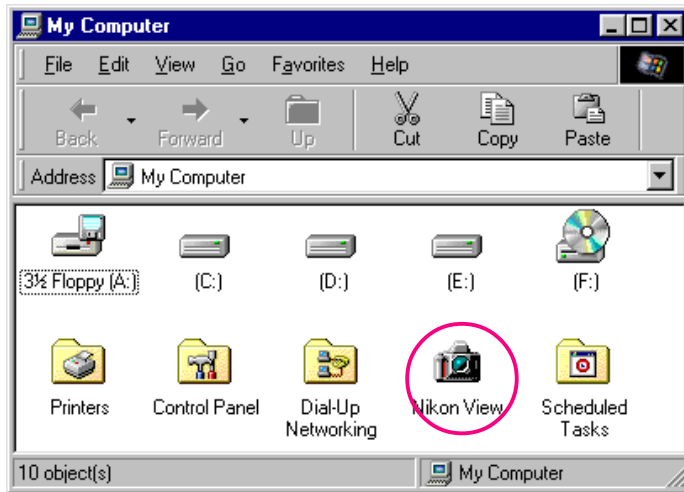
The default serial port data-transfer rate is 115,200 bps. If you experience communications problems, choose a lower data-transfer rate until you find one that works as described in “Changing Camera Type, Port and Rate Settings”.

## Browsing Image Files From a Card Reader

If your computer has a Type II PCMCIA card drive, you can read compact flash-memory cards using a flash-memory adapter (available separately from Nikon), or by using a compact flash memory card reader. If a card containing image files captured with a COOLPIX digital camera is inserted in either device, you can browse its contents with Nikon View.

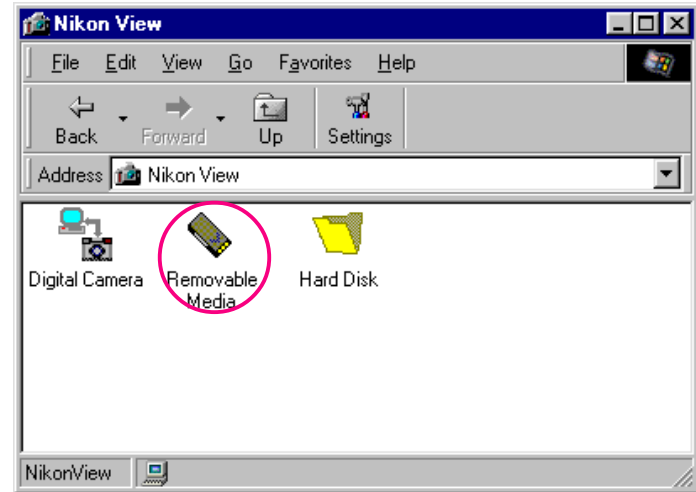
Follow these steps to view image files stored on a flash-memory card.

- 1 Double-click the **Nikon View** icon in the My Computer window.

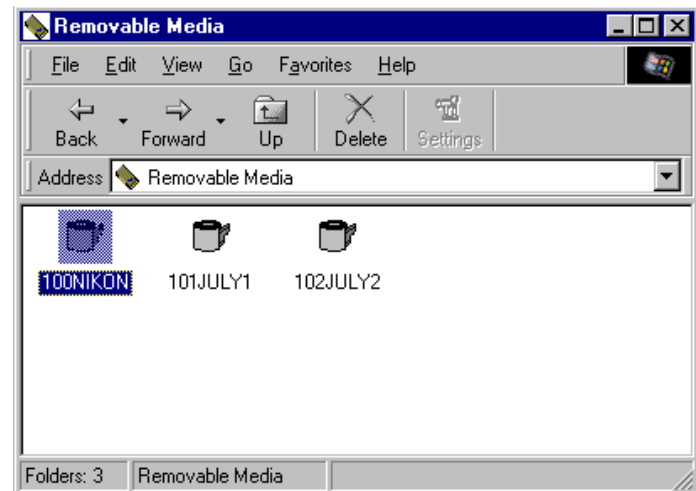


The Nikon View window will open.

- 2 Double-click the **Removable Media** icon.

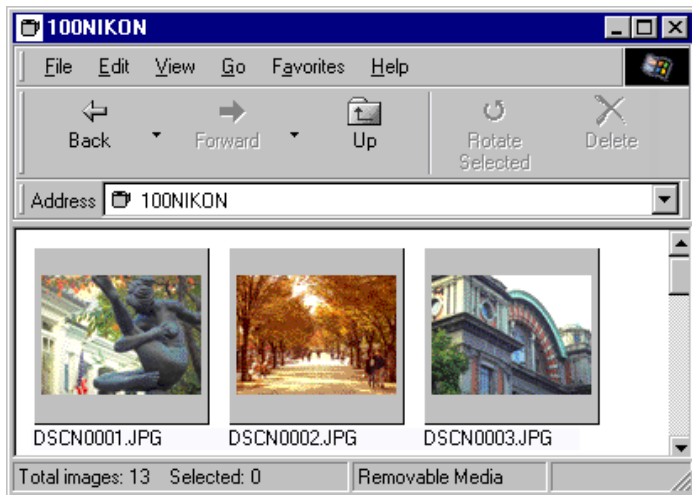


Folders in the card are represented by roll film icons.



### 3 Double-click the folder icon.

The image files in the selected folder will appear as thumbnail images.



From this thumbnail view, still images can be viewed at full resolution, printed, copied or deleted. In addition, movie files can be played, copied or deleted. See the following chapter for details.



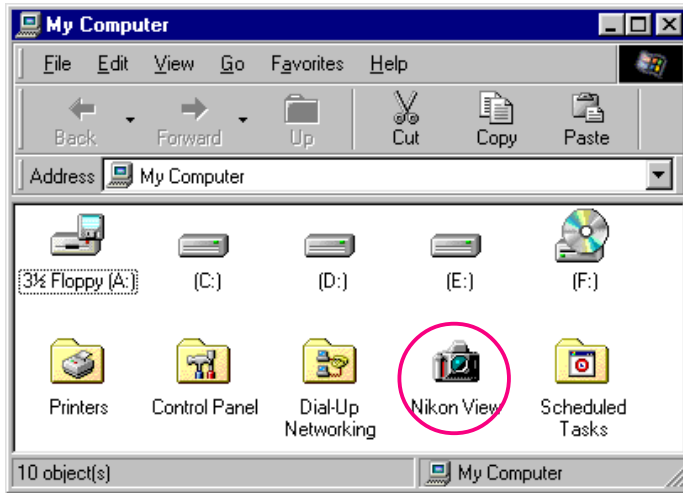
Nikon View automatically detects the drive containing the flash-memory card. When more than two drives are mounted (PC card slot or a compact flash-memory card reader), Nikon View selects the drive containing the memory card. If you want to browse another drive, select **Hard Disk** in the NikonView window, and use the **Select Folder** command to select the desired drive.

# Browsing Image Files on Disk

Nikon View can be used to browse image files on disk even when the camera is not connected.

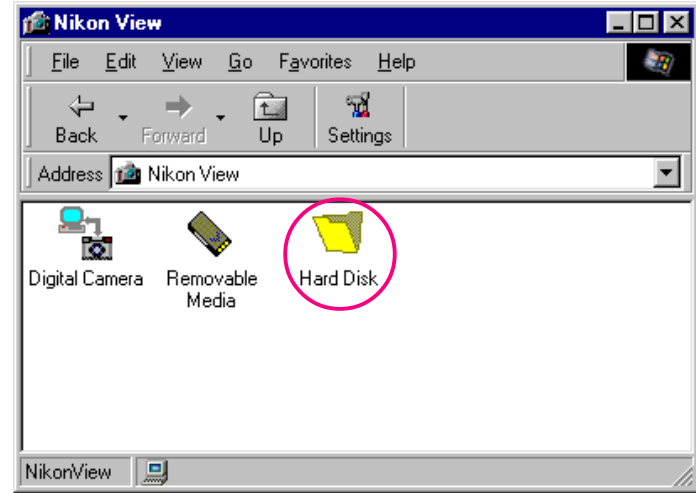
Follow these steps to view image files on disk.

- 1 Double-click the **Nikon View** icon in the My Computer window.

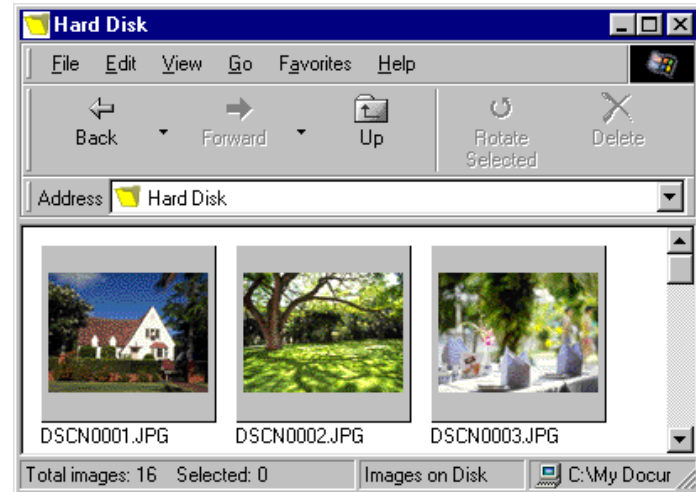


The Nikon View window will open.

- 2 Double-click the **Hard Disk** icon.



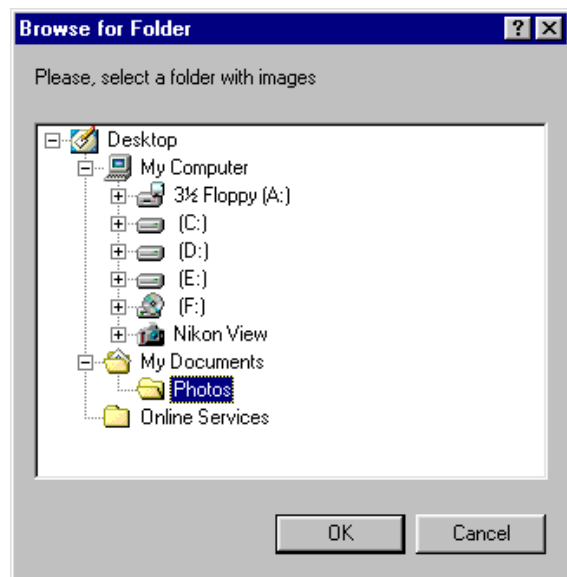
You can browse the folder you selected in your last session of Nikon View. The image files will appear as thumbnail images.



From this thumbnail view, still images can be viewed at full resolution, printed, copied or deleted. In addition, movie files can be played, copied or deleted. See the following chapter for details.

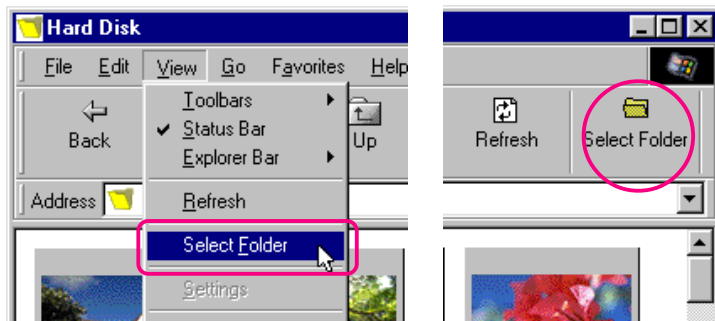
As there are no previously browsed image files when you initially install NikonView, the Browse for Folder dialog box will appear when you double-click the **Hard Disk** icon for the first time.

Select the folder that you want to browse, and click **OK**. The image files in the selected folder will appear.



## Browsing image files in another folder...

To browse image files in another folder, choose **Select Folder** from the **View** menu, or click the **Select Folder** button in the toolbar. If the button is hidden, enlarge the window to bring it into view.



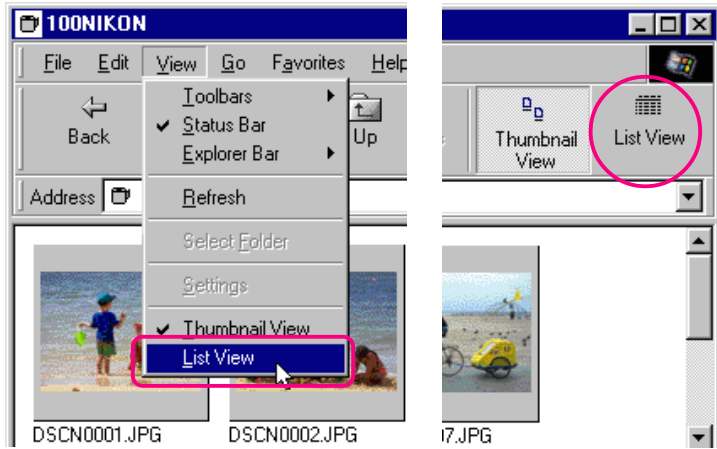
When the Browse for Folder dialog box appears, select the folder that you want to browse.



Click the right mouse button in an empty area of the window and choose **Select Folder** from the right-button menu.

## Displaying Image Files as a List

To view information on an image file's date of recording, a list-style display is available by selecting **List View** from the **View** menu or by clicking the **List View** button in the toolbar. If the button is hidden, enlarge the window to bring it into view.

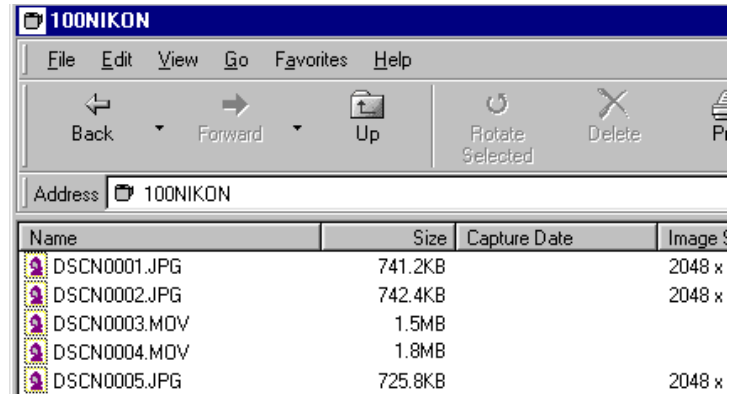


Click the right mouse button in an empty area of the window and choose **List View** from the right-button menu.

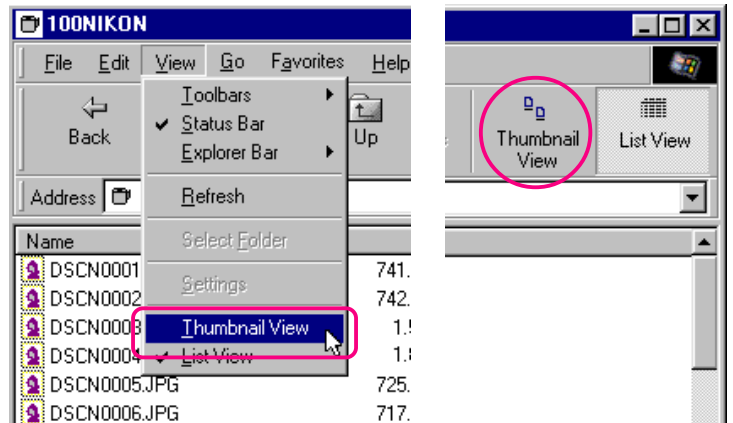


Depending on the resolution of your display, the right-edge tool buttons may not be visible, even when you maximize the image to fill the screen. In that case, open the **Toolbars** submenu on the **View** menu, and then clear **Text Labels** to change to small tool buttons without text labels.

The list-style display is shown below.



To view the image files as thumbnail previews again, select **Thumbnail View** from the **View** menu or click the **Thumbnail View** button.

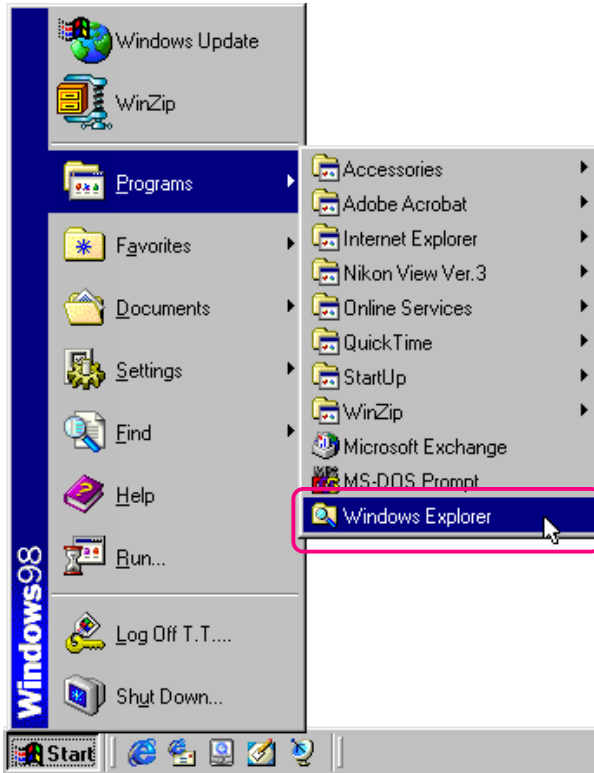


Click the right mouse button in an empty area of the window and choose **Thumbnail View** from the right-button menu.

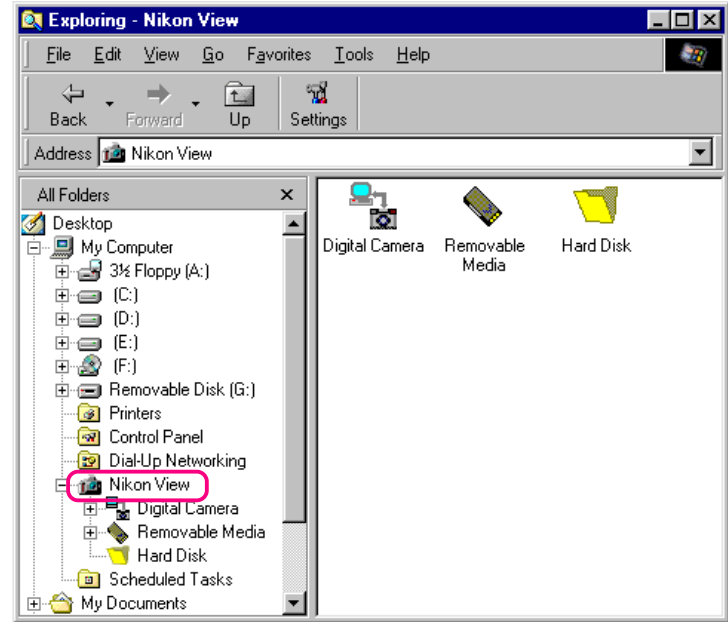


# Browsing in the Windows Explorer

With Nikon View installed, you can also browse image files saved in the camera's memory card using Windows Explorer. Click the **Start** button in the taskbar and select **Windows Explorer** from the **Programs** sub-menu.



Select **Nikon View**, from Explorer's My Computer folder list to display the **Digital Camera**, **Removable Media**, and **Hard Disk** icons.



Folders in the camera's memory card can be displayed by clicking the **Digital Camera** icon.

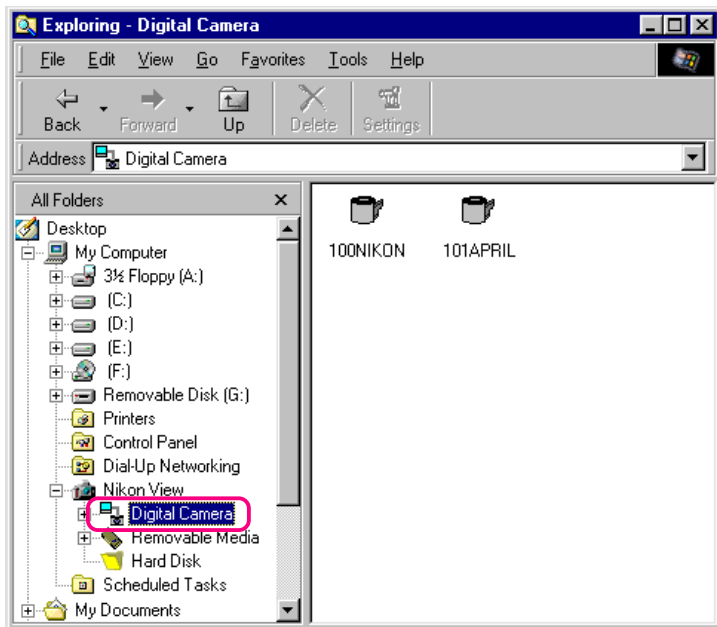
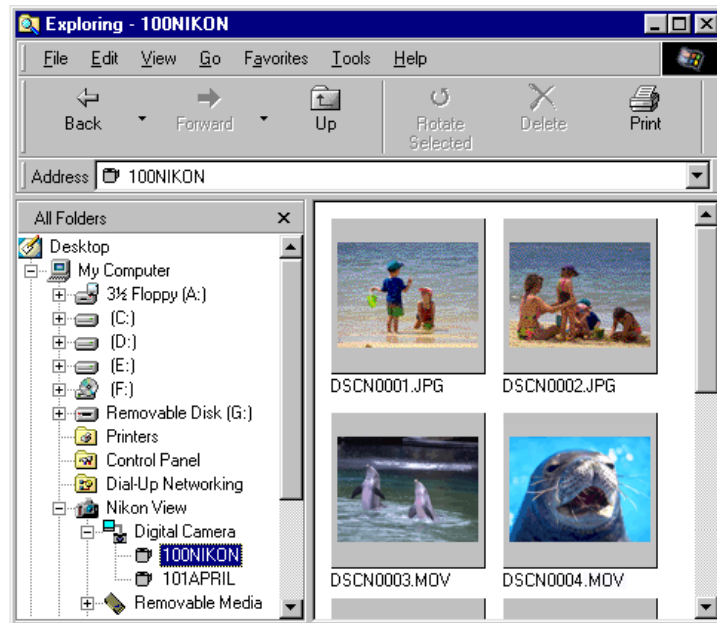


Image files in the camera's memory card can be browsed by clicking the icon for the desired folder.



You can also use these commands to browse image files when working from a card reader or disk. Operating procedures are the same as those for browsing in My Computer.





# Working with Image Files

In browsing with Nikon View, you can use the same standard operations that you would with other files under Windows. This chapter describes how to preview image files, copy them to disk, and open them for editing in other applications.

Selecting Thumbnails

Viewing Photographs

Playing Movies

Rotating Photograph Thumbnails

Deleting Image Files and Folders

Printing Photographs

Refreshing Thumbnails and Folders

Viewing Image File Information

Copying Image Files and Folders to Disk

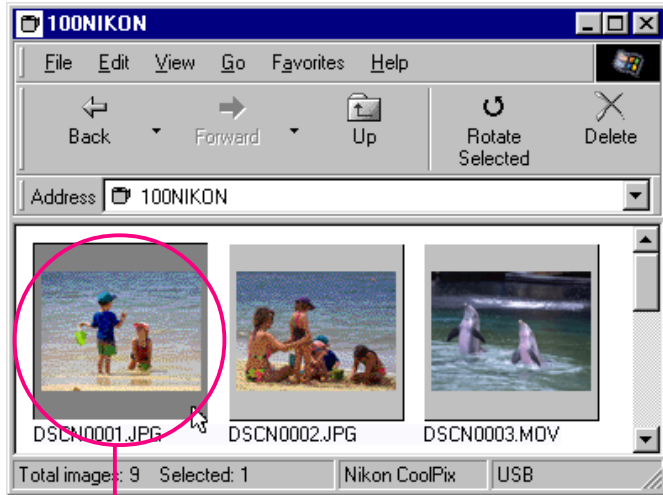
Opening Image Files in Another Application

Inserting Images into Documents



# Selecting Thumbnails

To copy, print, or delete an image file, select the desired thumbnail by clicking it once. Selected thumbnails are indicated by a dark gray border.




Selected thumbnail

To select multiple thumbnails, hold down the **Ctrl** key on the keyboard while clicking each thumbnail in turn.

To select all thumbnails, choose **Select All** from the **Edit** menu.



 Press **A** on the keyboard while holding down the **Ctrl** key, or click the right mouse button in an empty area of the window and choose **Select All** from the right-button menu.

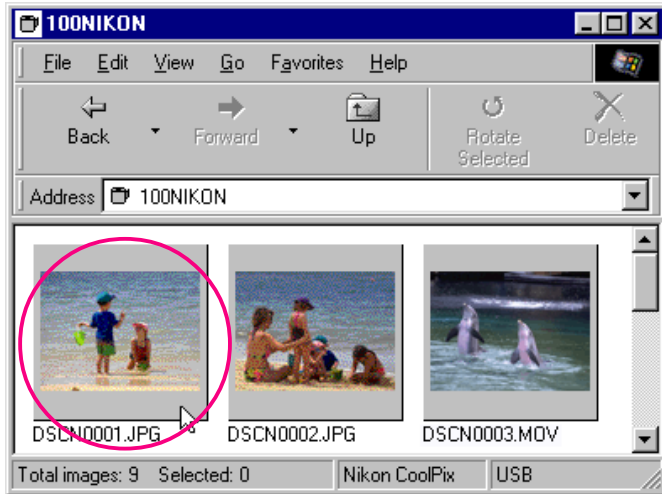


## Viewing Photographs

Photographs can be viewed at full resolution in image windows. Photographs in image windows can be rotated and zoomed in or out using the controls on the image window toolbar. Any number of image windows may be open at one time.

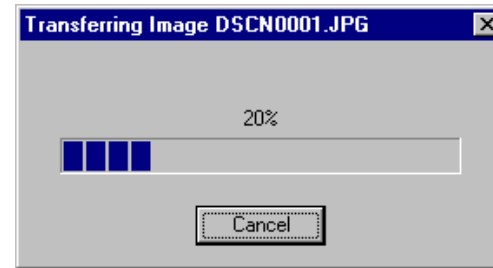
### Opening photographs in image windows

Double-click the thumbnail you wish to view.



Select the thumbnail with the right mouse button and choose **Preview** from the right-button menu.

While image data are being copied to the image window, the following indicator is displayed. Click **Cancel** to abort the operation.






Once transfer is complete, the photograph is opened in an image window.



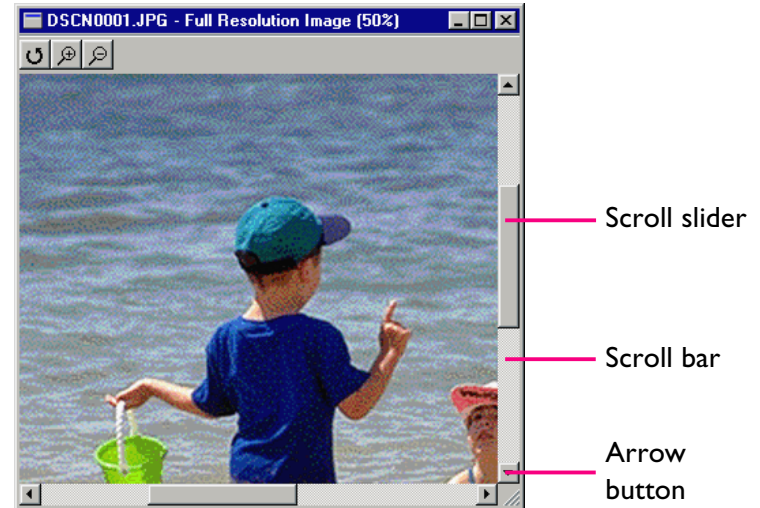
## Rotating photographs and zooming photographs in and out

The photograph in the image window can be rotated or zoomed in or out using the buttons in the image window toolbar.

-  **Rotate**      The image view is rotated ninety degrees to the left each time this button is clicked
-  **Zoom In**      Click to zoom the image view in
-  **Zoom Out**      Click to zoom the image view out

## Scrolling and resizing the image window

When the entire photograph does not fit in the image window, you can view the hidden portion by dragging the scroll sliders at the right and bottom of the window, or by clicking the scroll bars or arrow buttons. Alternatively, you can enlarge the window itself by dragging the window's borders.



To close an image window, click the close button (X) at the right end of the title bar.

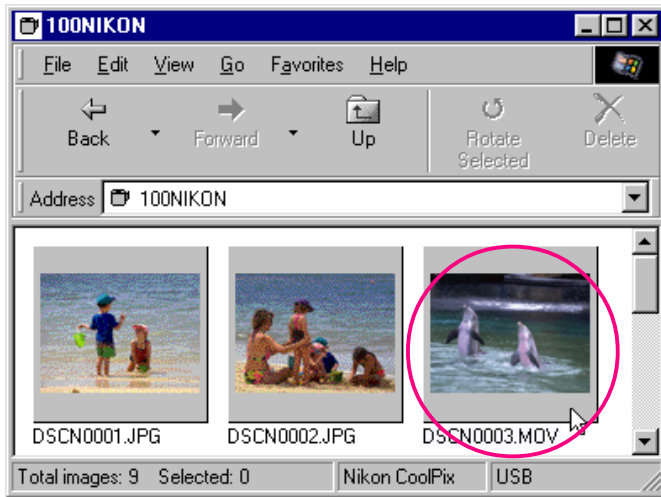
Rotation and zoom operations performed in the image window are not reflected in the thumbnail images in the browsing window.

# Playing Movies

Movies can be played with QuickTime Player. In the thumbnail view of the browser window, only the first frame of a movie file will be displayed. Movie files have the extension “.MOV”.

## Playing movies with QuickTime Player

Double-click the thumbnail of the movie file you wish to play.

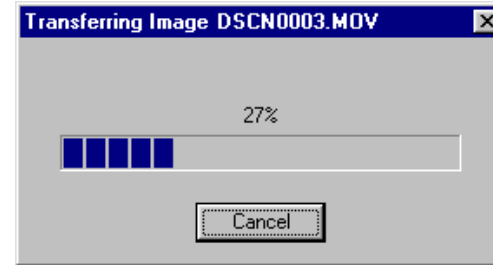


Select the thumbnail with the right mouse button and choose **Preview** from the right-button menu.



If QuickTime Player is not installed, a dialog box will open and ask you for the application to be used. If you don't already have QuickTime Player installed, you can install it from the Nikon View Ver.3 CD.

While movie data are transferred, the following indicator is displayed. Click **Cancel** to abort the operation.

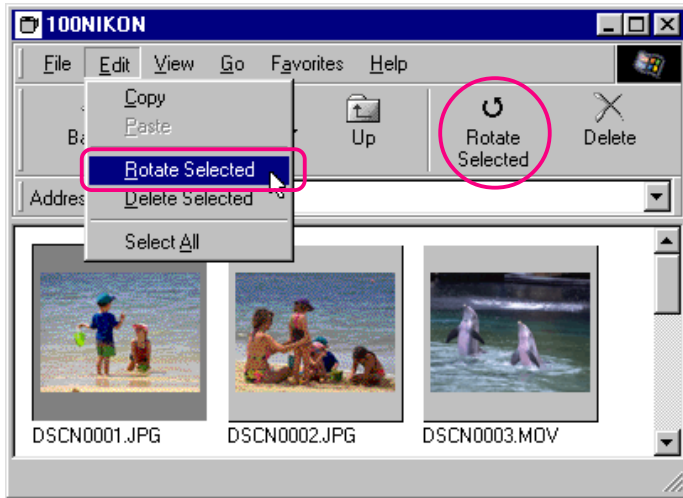


Once transfer is complete, the movie is opened in a movie window in QuickTime Player.



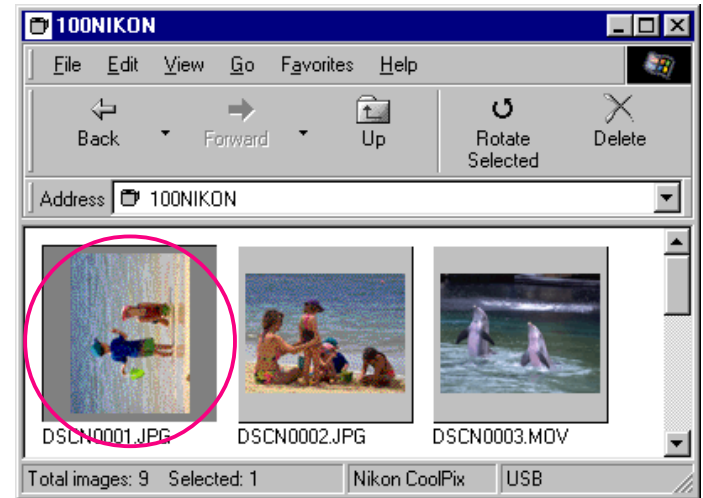
## Rotating Photograph Thumbnails

Selected photograph thumbnails in the browsing window can be rotated ninety degrees to the left by selecting **Rotate Selected** from the **Edit** menu or clicking the **Rotate Selected** button in the toolbar. (Movie file thumbnail can not be rotated.)



Select the thumbnail with the right mouse button and choose **Rotate** from the right-button menu.

Rotating the selected thumbnail.



Rotations applied to thumbnails in the browsing window have no effect on the image files in the camera, or on copies of the image file that have already been saved to disk. Rotations are saved if the image file is copied to disk after having been rotated.

## Deleting Image Files and Folders

Image files can be deleted from the camera's memory card when no longer needed. Note that image files can not be recovered from the Recycle Bin after deletion; be sure to back up any image files you would like to keep.

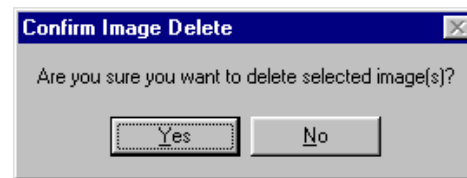
Follow these steps to delete selected image files.

- 1 Select the image files you wish to delete and choose **Delete Selected** from the **Edit** menu, or click the **Delete** button in the toolbar.



Delete selected thumbnails by pressing the **del** key on the keyboard, or click thumbnails with the right mouse button and choose **Delete** from the right-button menu.

A confirmation dialog box will appear.



- 2 Click **Yes** to delete the selected image files.

Click **No** to return to the browsing window without deleting the image files.

To delete all folders and image files which are being stored in the camera's memory card, select the **Digital Camera** icon, and then choose **Format** from the **File** menu, or click on the **Digital Camera** icon with the right mouse button and choose **Format** from the right-button menu.

### ✓ Caution!

Image files that have been protected using the camera or the Properties window can be deleted.



# Printing Photographs

NikonView allows you to print selected photographs or all the photographs in the browsing window.

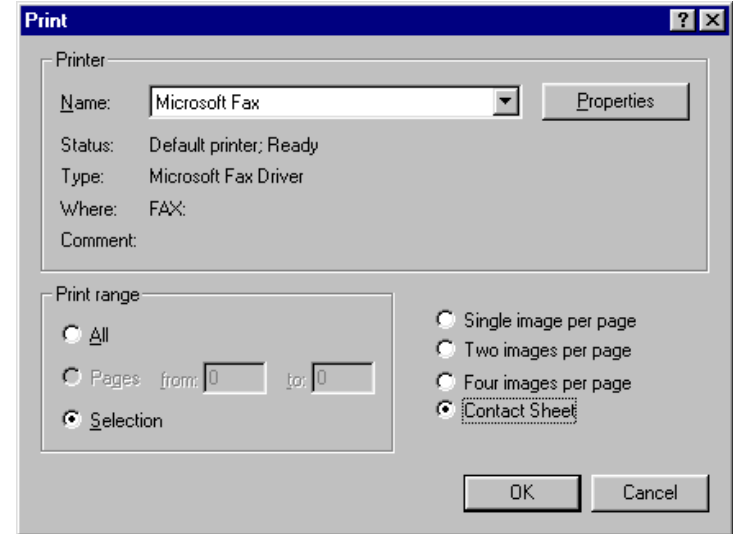
Follow these steps to print selected photographs.

- 1 Select the photograph(s) (JPEG or TIFF format files) you wish to print and then choose **Print...** from the **File** menu, or click the **Print** button in the toolbar.



Select the thumbnail with the right mouse button and choose **Print...** from the right-button menu.

The Print dialog box will appear.



- 2 After making changes to printer settings, click **OK** to print the selected photographs.

## Print dialog box options:

### Printer

#### Name

Gives the name of the active printer. Click the arrow key to the right of the listed printer to bring up a list of the printer drivers currently installed on your system, allowing you to choose a different printer. The type, location and current status of the selected printer are listed beneath this item.





## **Properties**

Click this button to bring up the Properties dialog box for the selected printer; here you can change paper size and graphics settings. The specific contents of the Properties dialog box depend on the printer selected.

## **Print range**

### **All**

With this command, all photographs displayed in the browsing window are printed.

### **Selection**

With this command, only the photographs currently selected in the browsing window are printed.

## **Number of images per page**

### **Single image per page**

With this command, each photograph is printed on a separate sheet.

### **Two images per page**

With this command, two photographs are printed on each sheet.

### **Four images per page**

Select this command to print four photographs per sheet.

### **Contact Sheet**

This command prints selected photographs as thumbnails.

## **OK**

Prints the photographs at the specified settings, and returns you to the browsing window.

## **Cancel**

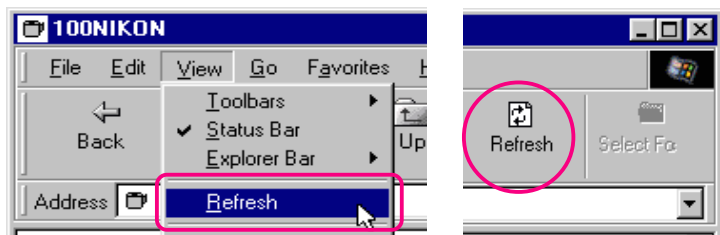
Returns you to the browsing window without printing the photograph(s).



## Refreshing Thumbnails and Folders

Nikon View does not immediately recognize changes made to the memory card from the camera. If you add, copy or delete image files from a folder, or add or delete folders from the memory card using the camera controls, you must refresh the thumbnails and folders for Nikon View to recognize those changes.

To update the thumbnails, select **Refresh** from the **View** menu or click the **Refresh** button in the toolbar.



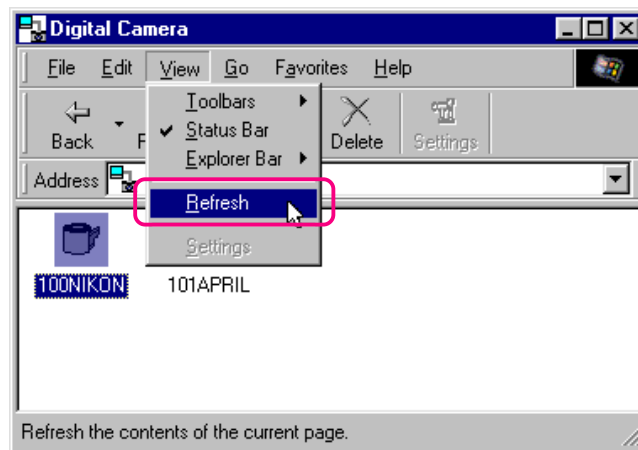
Click the right mouse button in an empty area of the window and choose **Refresh** from the right-button menu.

### ✓ Caution!

Do not disconnect the camera until the borders of the data-transfer display stop flashing. (The data transfer display varies according to your camera model.)

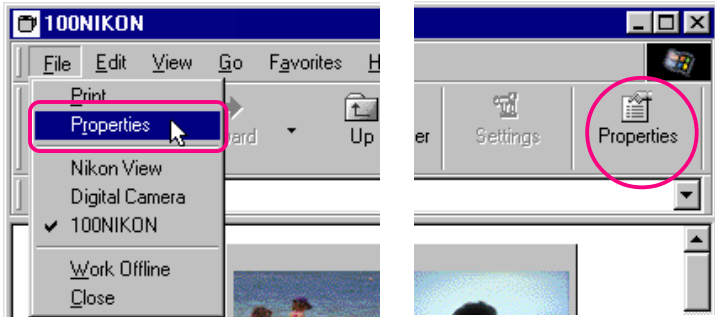
The image files in the selected source (the camera if **Digital Camera** is selected, a compact flash-memory card reader if **Removable Media** is selected, or a specified folder on a disk if **Hard Disk** is selected) will be read, and thumbnail previews displayed in the window.

You can select **Refresh** from the **View** menu, while the folders are displayed.



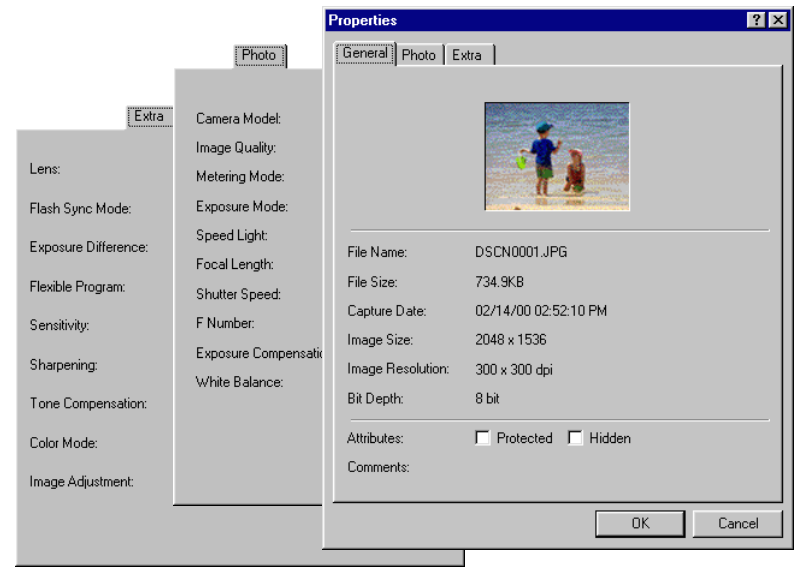
# Viewing Image File Information

Information on selected image files can be viewed. After choosing a thumbnail, select **Properties** from the **File** menu or click the **Properties** button in the toolbar.



Select a thumbnail with the right mouse button and choose **Properties** from the right-button menu.

The Properties dialog box is displayed. The Properties dialog box contains three panels, General, Photo and Extra. You can switch between three panels by clicking the tabs at the top of the dialog box.



The General panel gives the file name, file size, capture date, and dimensions of the selected image file. **Protected** and **Hidden** attributes set in the camera's playback mode can be changed using the **Attribute** check boxes. The Photo panel contains information on camera settings such as image quality and metering mode at the time the photograph was taken. The Extra panel contains camera control settings information such as exposure deviation, sensitivity and tone curves.

Click **OK** to accept any changes to image file attributes and close the Properties dialog box. Click **Cancel** to close the dialog box without changing the attributes.

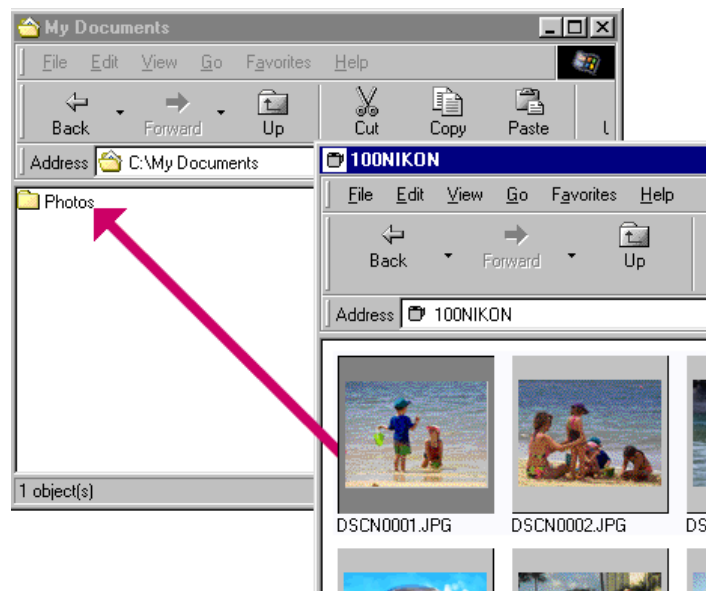
## Copying Image Files and Folders to Disk

Image files and folders can be copied to disk by using a drag-and-drop or copy-and-paste operation. Before copying image files or folders to disk, locate or create a destination folder.

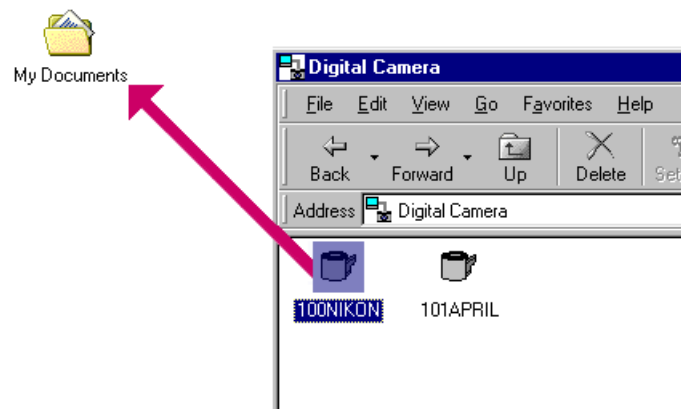
### Copying image files and folders using a drag-and-drop operation

Select the image files or folders you wish to copy by clicking their thumbnails or icons (to select multiple image files or folders, hold down the **Ctrl** key on the keyboard while clicking each), then drag the thumbnail or icons to the destination folder and release the mouse button.

### Copying an image file



### Copying a folder



All image files captured with the camera are assigned file names of the form “DSCN\_nnnn.xyz” where “nnnn” is a four-digit file number and “xyz” is a three-letter extension (JPG,TIF,MOV). Similarly, all image files saved in folders in the camera’s memory card are assigned file names of the same type. To prevent image files already copied to disk from being overwritten, change the filename after copying an image file, or create a new folder for each folder on the camera.

The progress indicator will be displayed while the items are copied to disk. Click **Cancel** to abort the operation.

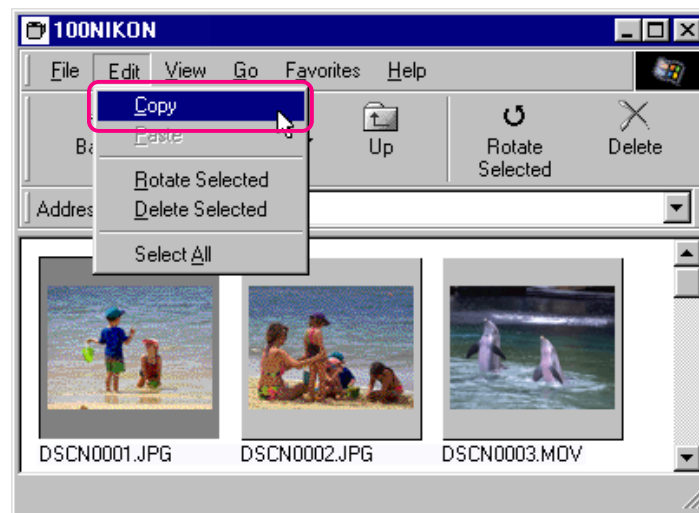
Once all items have been copied to disk, the progress indicator will disappear.

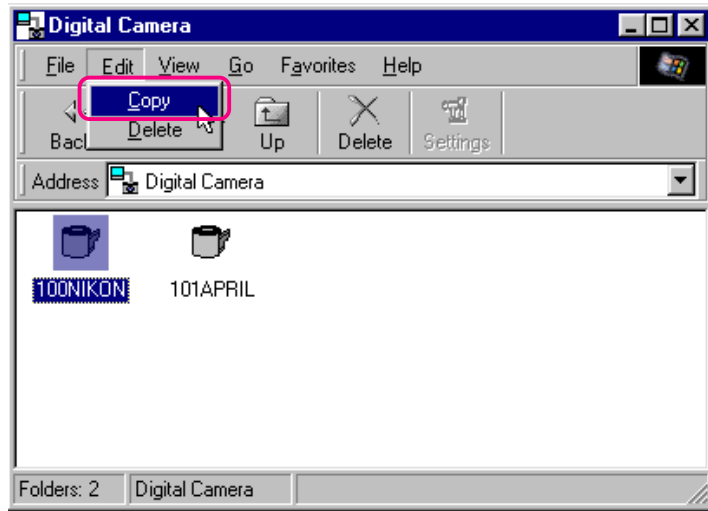
## Copying image files and folders using a copy-and-paste operation

Follow these steps to copy image files and folders to disk using a copy-and-paste operation.

- 1 Select the image files or folders you wish to copy by clicking their thumbnails or icons (to select multiple items, hold down the **Ctrl** key on the keyboard while clicking each thumbnail or icon), then select **C**opy from the **E**dit menu.

Browsing window





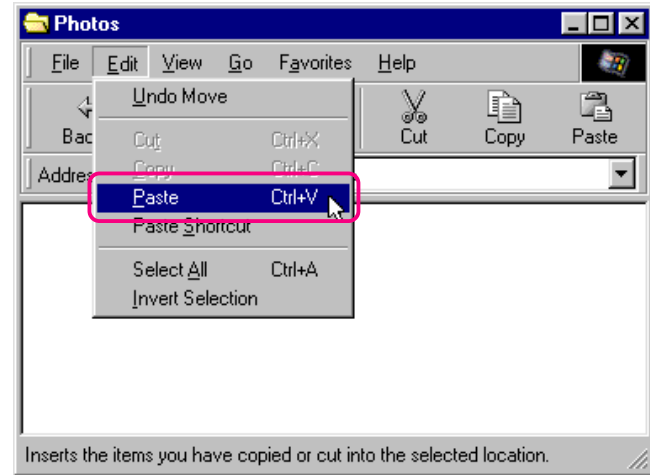
The progress indicator will be displayed while the items are copied to the clipboard. Click **Cancel** to abort the operation.

Once all image files or folders have been copied, the progress indicator will disappear.



Press **C** while holding down the **Ctrl** key on the keyboard, or click a thumbnail with the right mouse button and choose **C**opy from the right-button menu.

2 Open the destination folder and select **Paste** from the folder's **E**dit menu.



The selected items will be copied to the destination folder.



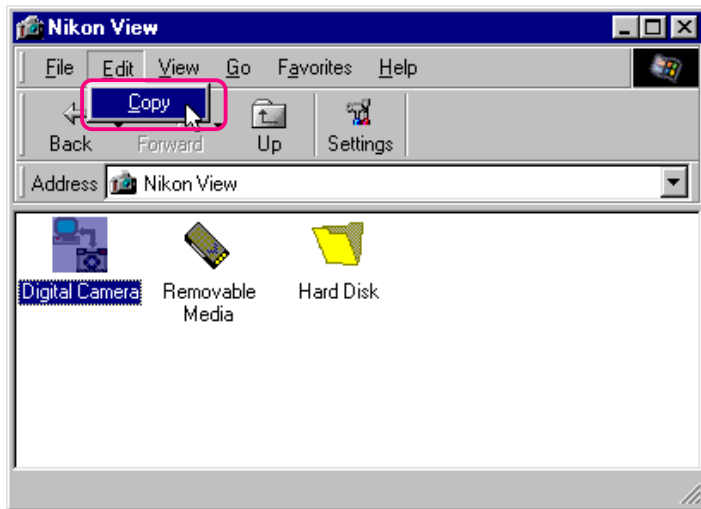
When copying a thumbnail to disk, if an image file with the same filename has previously been copied, you will be asked whether you wish to replace the existing file. If you select **N**o, a temporary file containing the image file data is created in the Windows temporary folder (path Windows folder\Temp\Camexp\Transfer). Then, when you copy files with redundant names to disk, they are saved under names created by adding a number in brackets ([1], [2], [3], [...]) to the filename. This prevents users from accidentally overwriting image files on the computer. If you use this operation repeatedly, however, you will fill the temporary file. To clear disk space, you may wish to delete the contents of this temporary folder periodically—the “Windows folder” is the folder to which Windows has been installed.



## Copying all contents to disk

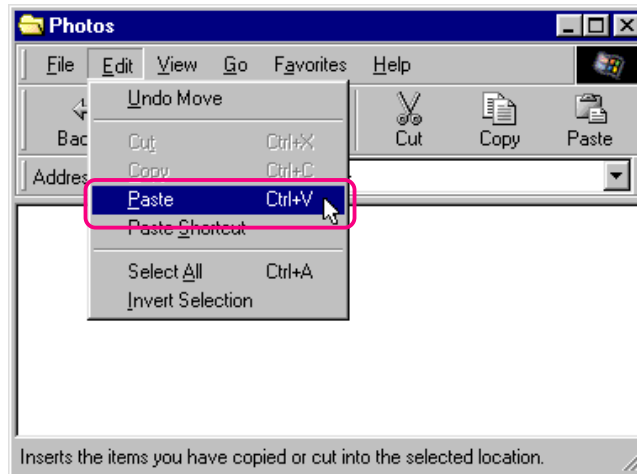
Follow these steps to copy the entire contents of the camera's memory card to disk from the Nikon View window.

- 1 Select the **Digital Camera** icon by clicking its icon, then select **Copy** from the **Edit** menu.



Press **C** while holding down the **Ctrl** key on the keyboard, or click a thumbnail with the right mouse button and choose **Copy** from the right-button menu.

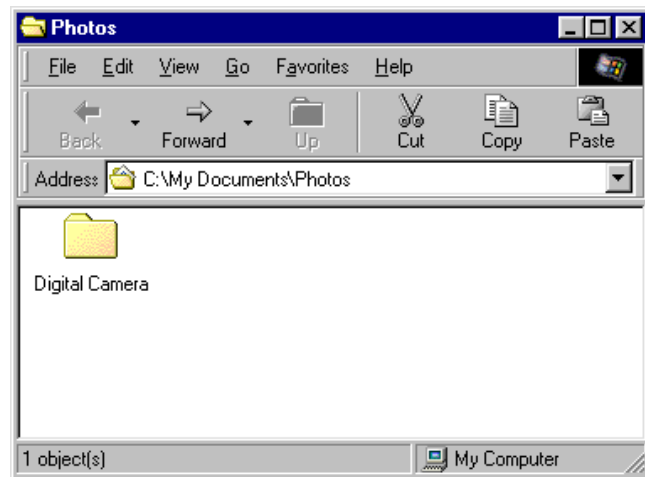
- 2 Open the destination folder and select **Paste** from the folder's **Edit** menu.



The progress indicator will be displayed while the items are transferred. Click **Cancel** to abort the operation.

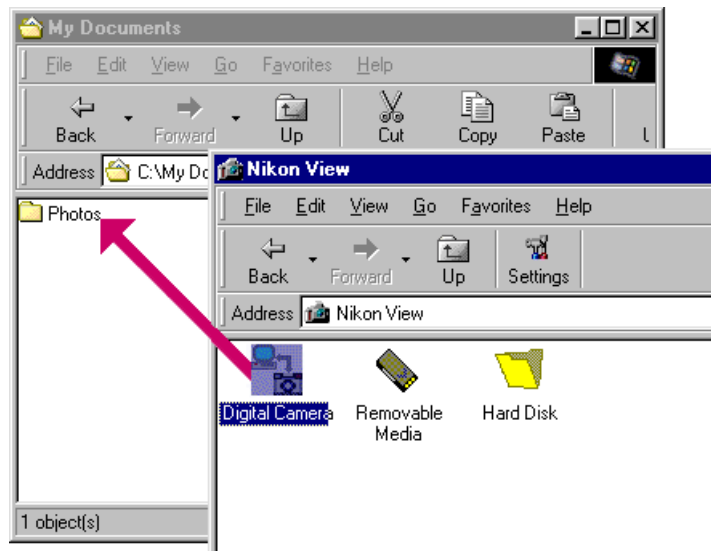


Once the contents of the memory card have been copied, the progress indicator will disappear. The Digital Camera folder is located in the destination folder and contains the complete contents of the memory card.



Use the same process to copy the entire contents of the memory card when using a card reader. The complete Hard Disk folder can be copied in the same manner.

You can also copy the entire contents of the camera's memory card using a drag-and-drop operation.



The progress indicator will be displayed while the items are copied to the clipboard. Click Cancel to abort the operation.

Once the contents of the memory card have been copied, the progress indicator will disappear. The Digital Camera folder is located in the destination folder and contains the complete contents of the memory card.

Use the same process to copy the entire contents of the memory card when using a card reader. The complete Hard Disk folder can be copied in the same manner.



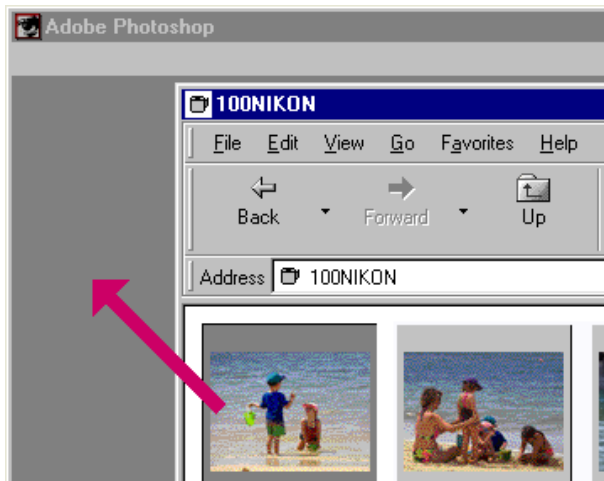


## Opening Image Files in Another Application

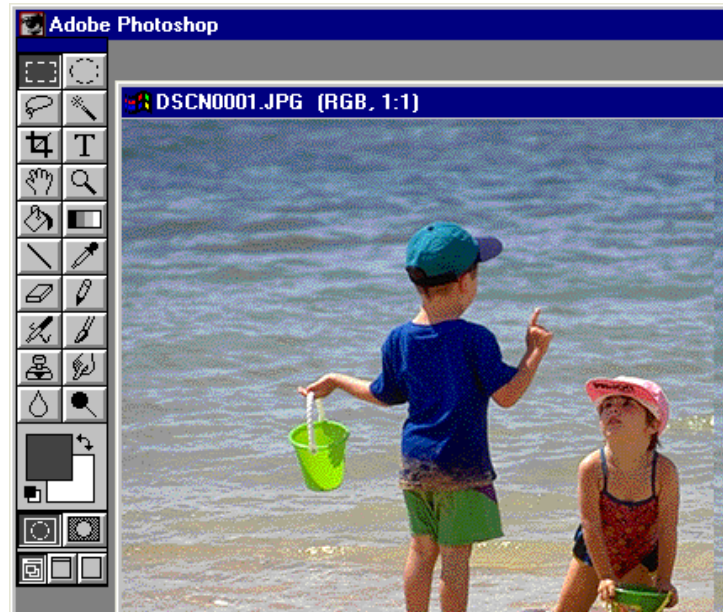
You can open the photographs recorded with your coolpix camera in any application that supports JPEG (“.JPG”) or TIFF (“.TIF”) formats. Photographs can be opened directly from the application or by using a drag-and-drop operation. You can use the same operations to play movies in applications that support the QuickTime movie (“.MOV”) format.

### Opening image files by drag-and-drop

Image files that have been selected in the browsing window can be opened in another application by dragging the thumbnails over an open application window and releasing the mouse button.



The image files will be opened in the host application.



Use the host application’s **Save As...** command to save the image files in the appropriate folder.



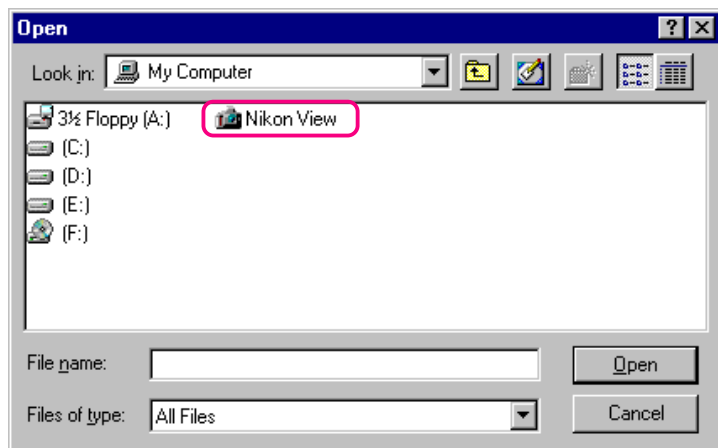
After opening image files captured with the camera in another application, a temporary file containing the image file data is created in the Windows temporary folder (path (Windows folder)\Temp\Camexp\Transfer). As repeated use of this operation will fill the temporary file, you may wish to delete the contents periodically to clear disk space. If you save the open image file using the **Save** command, it is saved in the temporary folder. Use the **Save As...** command to save the image file in the appropriate folder—the “Windows folder” is the folder to which Windows has been installed.



## Opening image files from other applications

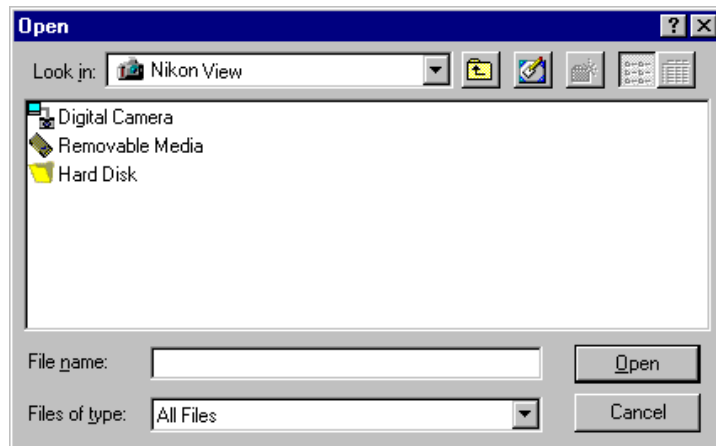
Follow these steps to open image files using the host applications' open dialog.

- 1 You can open image files in another application by selecting the open command from the host application's **File** menu.
- 2 In the host application's Open dialog box, select **Nikon View** from the drives listed under My Computer and click **Open**.



The **Digital Camera**, **Removable Media**, and **Hard Disk** icons are displayed.

- 3 Double-click the icon of the source of the desired image file.



If you chose **Digital Camera**, or **Removable Media**, more folders from the memory card are displayed. **Hard Disk** displays a Select Folder dialog box.

#### 4 Select a folder.

Thumbnail previews of the image files in the selected folder will be displayed (to change to a list display, right-click in an empty area by the thumbnails, and select **List View** from the menu).



#### 5 Select the thumbnail you wish to open and click **Open**.

The selected image file will be opened in a window within the host application.

Use the **Save As...** command to save the image file in the appropriate folder.

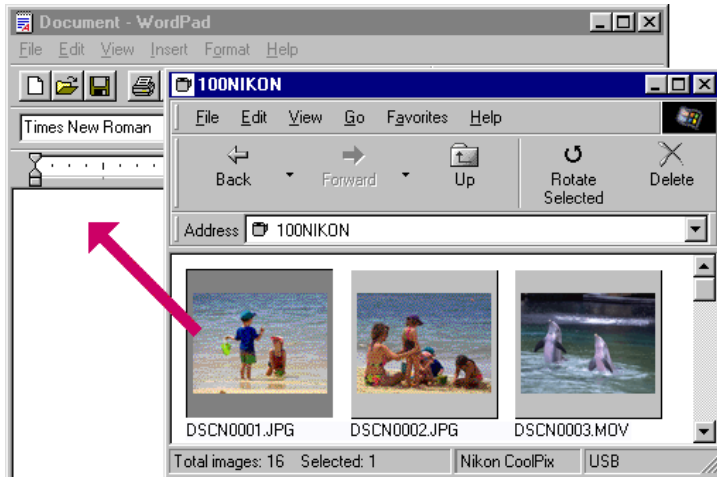
The dialog box shown above is the standard Windows Open dialog box for 32-bit applications. The contents of the dialog box may vary depending on the host application.

## Inserting Images into Documents

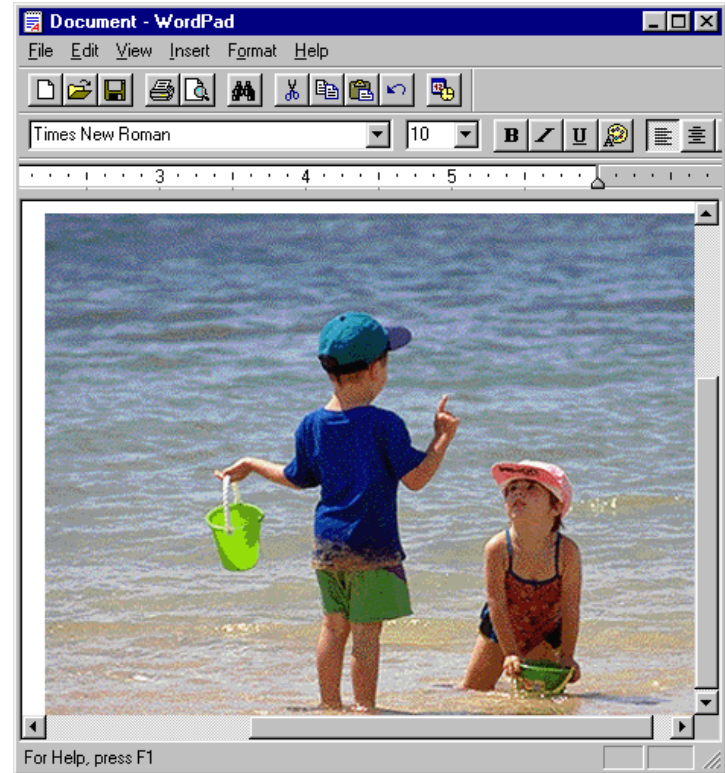
Nikon View supports OLE 2.0, which allows you to insert photographs taken with the COOLPIX digital cameras into documents created by any OLE 2.0 application that supports the JPEG (".JPG") or TIFF (".TIF") image format. Photographs can be inserted in documents directly using drag-and-drop or copy-and-paste operations, or they can be embedded using the insert object command. You can use the same operations to insert movies taken with COOLPIX digital cameras in OLE 2.0 applications that support the QuickTime movie (".MOV") format.

### Inserting images using a drag-and-drop operation

Drag the image file you wish to insert over an open document window in another application.

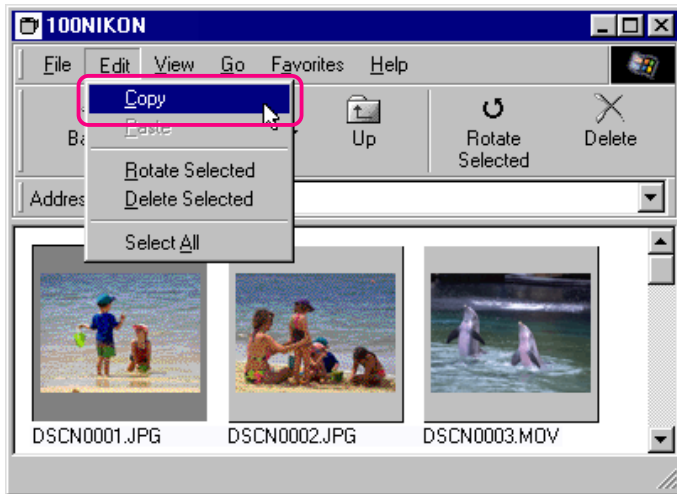


If the host application supports OLE 2.0, the image file will be inserted in the document as shown below.



## Inserting images using a copy-and-paste operation

In the browsing window, select the image file you wish to insert and select **C**opy from the **E**dit menu.



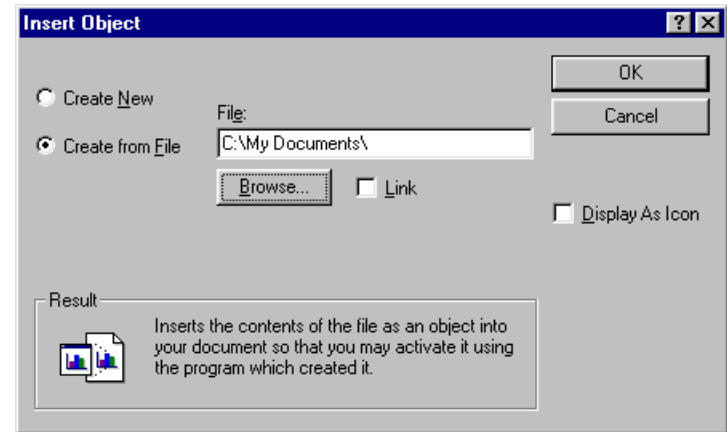
Next, open the host application and display the document window into which you wish to insert the image file. Paste the image file into the document by positioning the cursor, and selecting **P**aste from the host application's **E**dit menu.

## Inserting images using the insert object command

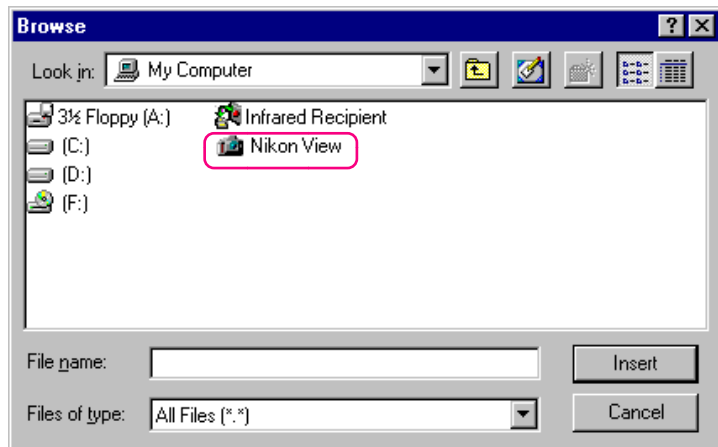
In applications that support OLE 2.0, image files can be inserted in documents using the host application's insert object command.

Follow these steps to insert images using the insert object command.

- 1 In the insert object dialog box, choose **C**reate from **F**ile, and then click **B**rowse....

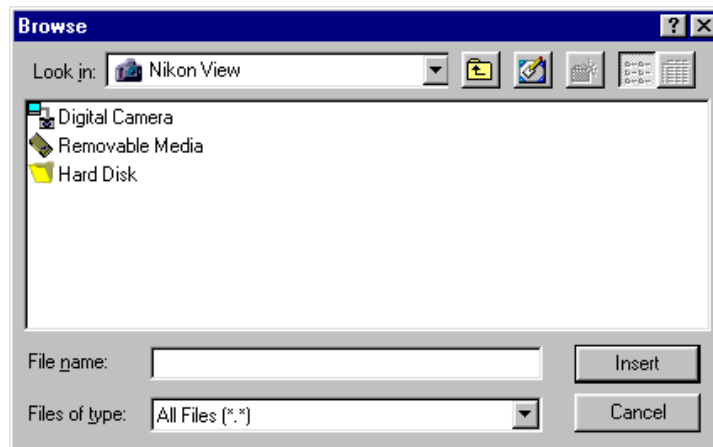


- 2 In the Browse dialog box, select **Nikon View** from the drives listed under My Computer in the **Look in** pop-up menu, and then click **Insert**.



The **Digital Camera**, **Removable Media**, and **Hard Disk** icons are displayed.

- 3 Double-click the icon of the source of the desired image file.



If you chose **Digital Camera**, or **Removable Media**, more folders from the memory card are displayed. **Hard Disk** displays a Select Folder dialog box.

#### 4 Select a folder.

Thumbnail previews of the image files in the selected folder will be displayed (to change the list display, right-click in an empty area next to the thumbnails, and select **List View** from the menu).



- #### 5 Select the image file you wish to insert and click the **Insert** button to return to the insert object dialog. Click **OK** to insert the selected image file in the document.

This chapter covers camera type, connection port and data transfer rate settings adjustment.

Changing Camera Type, Port and Rate Settings

 **Click**  
to go



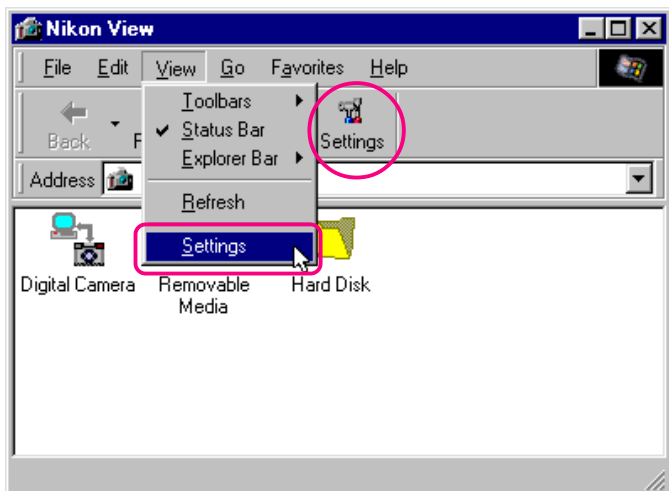


## Changing Camera Type, Port and Rate Settings

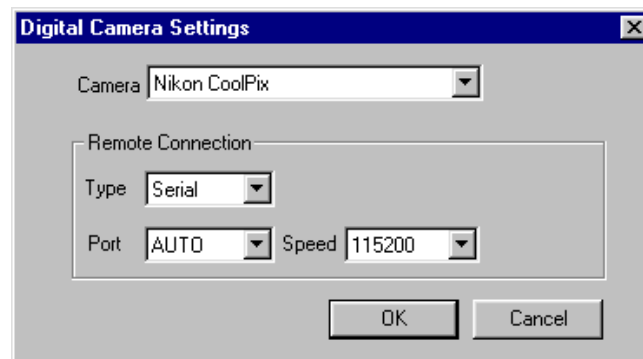
The camera used with Nikon View, the connection port, and the data transfer rate (port speed) can be changed after installation.

Follow these steps to change settings.

- 1 In the NikonView window, select **Settings...** from the **View** menu, or click the **Settings** button in the toolbar.



The following Digital Camera Settings dialog box will be displayed.



- 2 Make the desired settings changes and click **OK**.

### Digital Camera Settings dialog box options:

#### Camera

The name of the camera currently connected is displayed. If you have installed NikonView DX, you can also select the Nikon D1 digital camera. For more information, see the NikonView DX Reference Manual. Choose **Nikon CoolPix** for all models of COOLPIX digital camera.

## Remote Connection

### Type

Options available in the Type option vary depending on the camera connected. If you've selected **Nikon CoolPix**, you can choose from **Serial** or **USB** (though **USB** is a selectable option, it is only functional when the COOLPIX 990 is connected to your computer's USB port). If you've selected **Nikon DI**, the Remote Connection Type indicator will read **I394** (IEEE 1394 interface).

### Port

If **Serial** (SC-EW3 cable sold separately) is selected as the port type, clicking the arrow button to the right of this text box displays a list of supported ports. Select the port to which the camera is connected from among **AUTO**, **COM1**, **COM2**, **COM3**, and **COM4**. If you choose **AUTO**, the computer automatically detects the port to which the camera is connected. This text box is disabled while **USB** is selected as the port type.

### Speed


If **Serial** is selected as the port type, clicking the arrow button to the right of this field displays a list of supported speeds (data-transfer rates). This text box is disabled while **USB** is selected as the port type.

### OK

Accepts any changes to port settings and closes the Digital Camera Settings dialog box.

### Cancel

Closes the Digital Camera Settings dialog box without changing port settings.



If you consistently connect your camera to just one serial port, select the appropriate port number, rather than **AUTO**, to speed processing.

This chapter provides a brief reference guide to Nikon View's menu bar and toolbar. Refer to this guide when you want to know the meaning of a command or button.

The Menu Bar

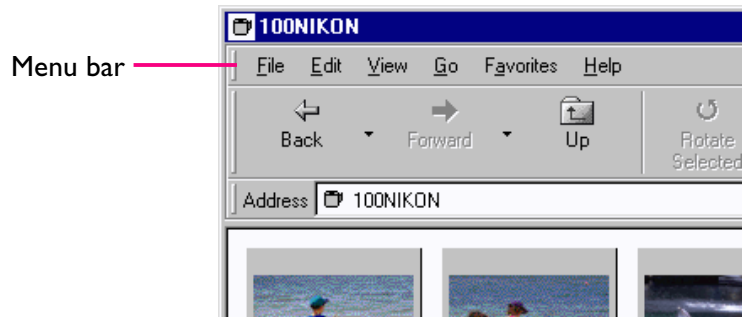
The Toolbar

The Right-Button Menus

 **Click**  
to go

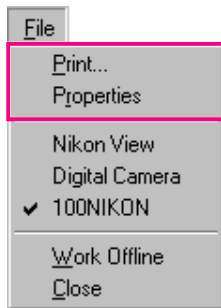
## The Menu Bar

When you browse image files in Nikon View, Nikon View commands are added to the standard Windows menu commands. The commands available in each menu are outlined below.



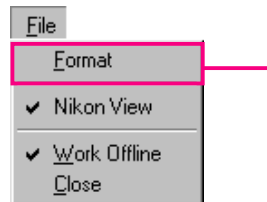
## The File Menu

Browsing window



These commands can only be used in the browsing window.

Nikon View window



This command can only be used in the Nikon View window.

## Print...

Allows you to print the selected photograph(s) to a printer that you specify. You can also choose this command by clicking the **Print** button in the toolbar.

## Properties

Displays the properties for the selected image file in the Properties dialog box. You can also choose this command by clicking the **Properties** button in the toolbar.

## Format

Initializes the camera's memory card.

## Work Offline

Allows you to perform work while you are offline.

## Close

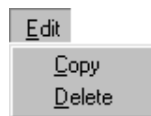
Closes the Nikon View window, terminating your Nikon View session. You can also exit the program by clicking the close button (**x**) at the right end of the title bar.

## The Edit Menu

Browsing window



Digital Camera window



### **Copy**

Copies the selected image file or folder to the clipboard. The image file can then be pasted into another folder or application using the Windows paste command.

### **Paste**

This command is unavailable from Nikon View.

### **Rotate Selected**

Rotates selected image file(s) ninety degrees, counter-clockwise. You can also choose this command by clicking the **Rotate Selected** button in the toolbar.

### **Delete Selected/Delete**

The selected image file or folder is deleted from the source currently being browsed. You can also access this command to delete the selected image file(s) by clicking the **Delete** button in the toolbar.

## **Select All**

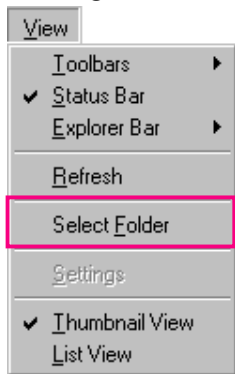
Selects all image files in the browsing window for copying, printing or deletion.



## The View Menu

Commands available in the **View** menu vary depending on the active window.

### Browsing window



### Nikon View window



This command can only be used when browsing a hard disk.

## Toolbar

Choose this command to determine the type of toolbar that will be displayed.

## Status Bar

Choose this command to display the status bar at the bottom of the Nikon View window.

## Explorer Bar

Choose this command to determine the type of Explorer bar that will be displayed.

## Refresh

Updates the image files in the browsing window. You can also choose this command by clicking the **Refresh** button in the toolbar, or selecting it from the **View** menu, while the folders are displayed.

## Select Folder

Displays the Browse for Folder dialog box, allowing you to select the folder containing the image files you want to browse. You can also choose this command by clicking the **Select Folder** button in the toolbar. This command may only be used when browsing image files in the Hard Disk window.

## Settings...

Displays the Digital Camera Settings dialog box, where you can make changes to port settings. You can also choose this command by clicking the **Settings** button in the toolbar. This command may only be used in the Nikon View window.

## Thumbnail View

Displays the image files as thumbnails. You can also choose this command by clicking the **Thumbnail View** button in the toolbar.

## List View

Displays the image files as a simple list, without thumbnails. You can also choose this command by clicking the **List View** button in the toolbar.



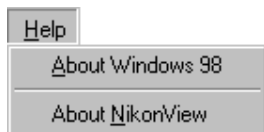
## The Go Menu

A standard Windows menu command. Refer to your Windows manual for details.

## The Favorites Menu

A standard Windows menu command. Refer to your Windows manual for details.

## The Help Menu



### **About Windows 98**

Displays Windows 98 version information.

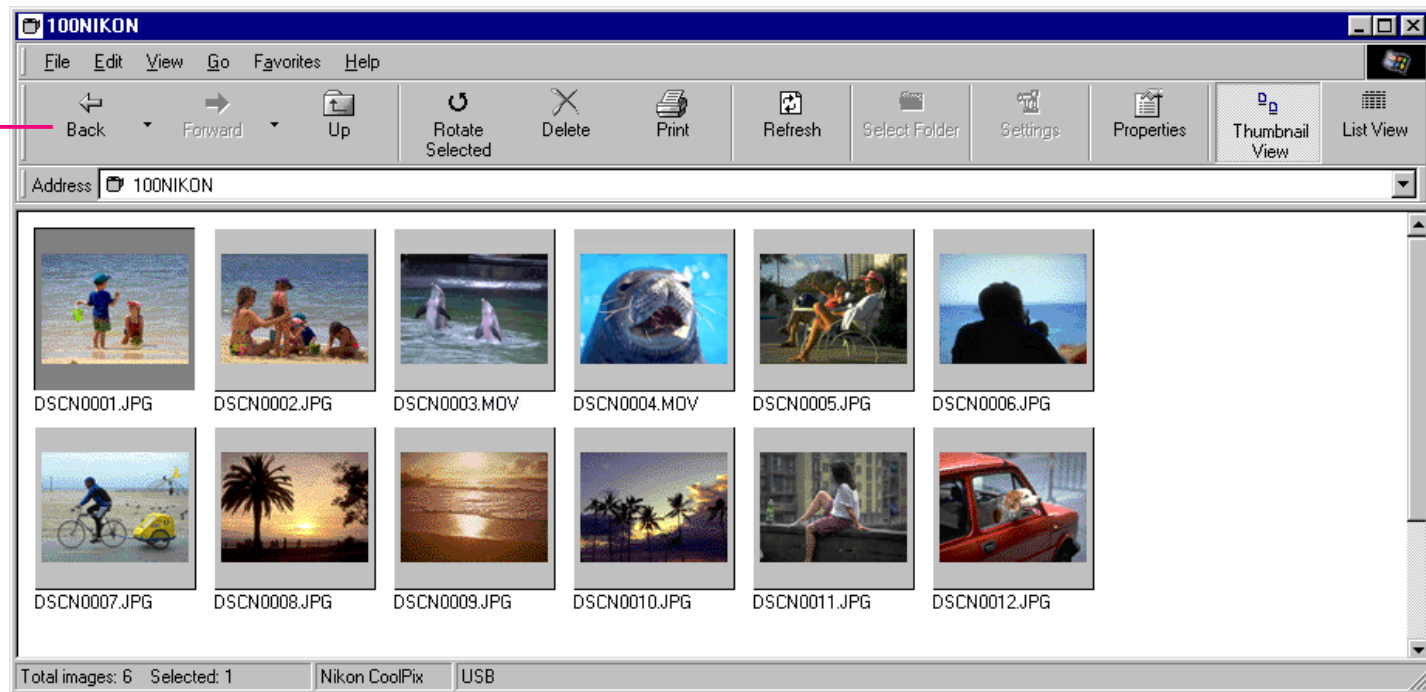
### **About NikonView**

Opens the Nikon View splash window, which gives copyright information for the program.

# The Toolbar

The buttons in the toolbar allow you to manage image files in the browsing window and perform various operations.

Toolbar



Enlarge the window in order to view all of the command buttons in the toolbar. When you locate the cursor on the window frame, it changes into a bi-directional arrow. Drag this arrow to enlarge the window.

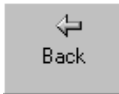

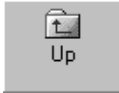











Depending on the resolution of your display, the right-edge tool buttons may not be visible, even when you maximize the image to fill the screen. In that case, open the **Toolbars** submenu on the **View** menu, and then clear **Text Labels** to change to small tool buttons without text labels. (To view a button's label, place the mouse pointer on the button, and wait for a few seconds. A label will pop up.)





The commands accessible from the toolbar are outlined below.

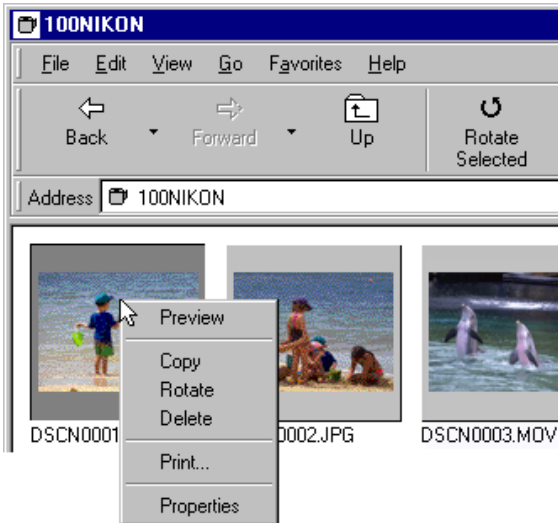
Button	Function
	Returns to the previous window.
	Proceeds to the next window.
	Opens the folder one level up in the file hierarchy (in the case of the NikonView folder, the My Computer folder).
	Rotates the selected image file(s) 90° counter-clockwise.
	Deletes the selected image file(s). Clicking this button brings up the Confirm Image Delete dialog box, allowing you to permanently remove the selected image files from the open media.
	Brings up the Print dialog box, allowing you to print selected image file(s) to a printer of your choice.

Button	Function
	Updates the image files in the window.
	Displays the Browse for Folder dialog box, allowing you to select the folder containing the image files you want to browse. This command may only be used when browsing image files in the Hard Disk window.
	Displays the Digital Camera Settings dialog box, where you can change camera type, connection port and transfer rate settings. This button may only be used in the NikonView window.
	Displays the Properties dialog for the selected image file(s).
	Displays image files as thumbnails.
	Displays image files as a simple list, without thumbnails.

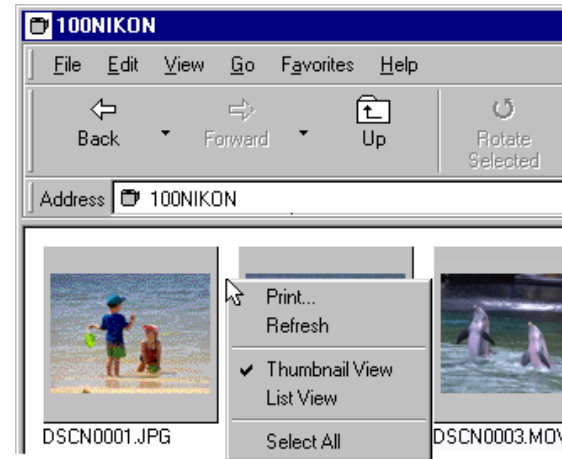
## The Right-Button Menus

You can use right-button menu commands to perform various operations such as Preview, Copy, List View, and so on.

Click a thumbnail with the right mouse button to select the image file and display a menu of command shortcuts.



Clicking the right mouse button in an empty part of the window displays the menu shown below.

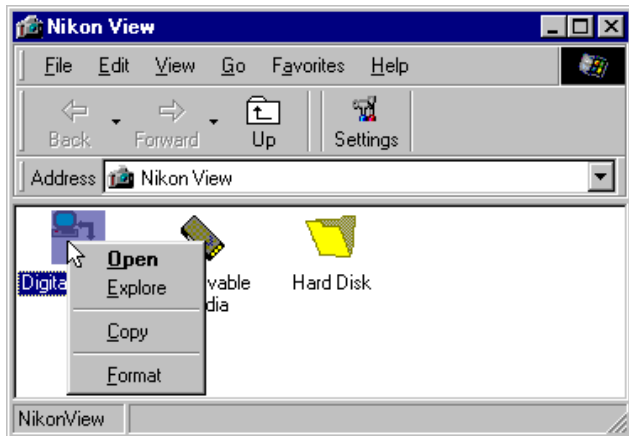


These menus allow quick access to the commands in the menu bar and toolbar.

Similarly, you can use these right-button menus with the open dialog and the browse dialog when browsing the Nikon View window from another application. (Only, however, in the standard Windows dialog box for a 32-bit application.)

You can use the **Select Folder** command when browsing image files in the Hard Disk window.

Right-clicking the **Digital Camera** icon in the Nikon View window displays the menu shown below.



Right-clicking a folder icon in the Digital Camera window displays the menu shown below.

