

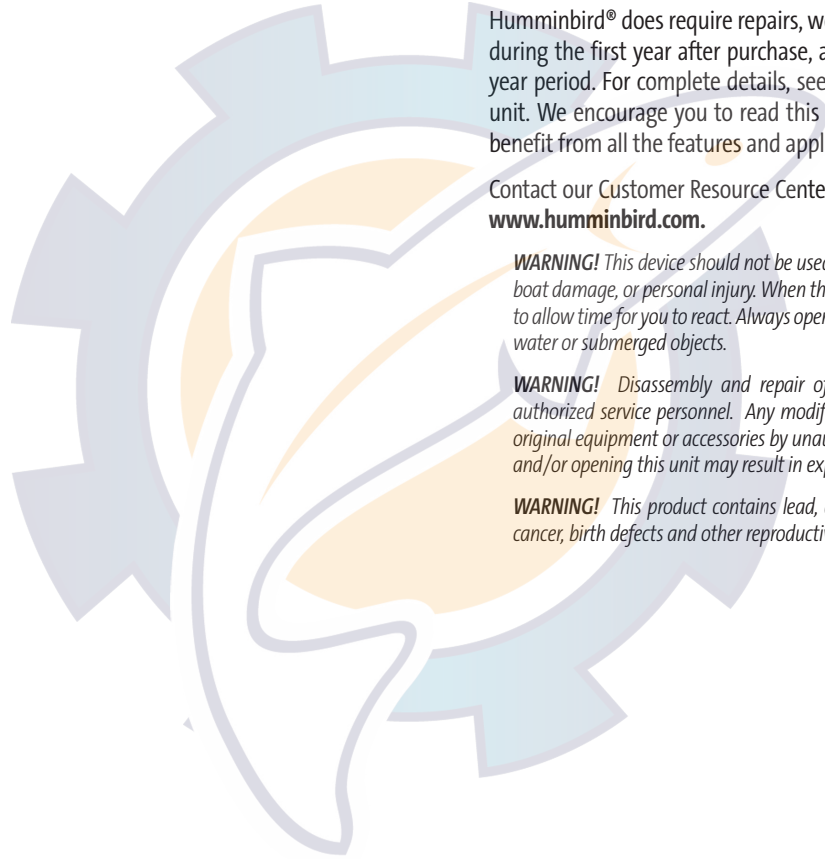
# FishFinder 585c Operations Manual



531363-1\_A



fishfinder  
series



## Thank You!

Thank you for choosing Humminbird®, America's #1 name in FishFinders. Humminbird® has built its reputation by designing and manufacturing top-quality, thoroughly reliable marine equipment. Your Humminbird® is designed for trouble-free use in even the harshest marine environment. In the unlikely event that your Humminbird® does require repairs, we offer an exclusive Service Policy - free of charge during the first year after purchase, and available at a reasonable rate after the one-year period. For complete details, see the separate warranty card included with your unit. We encourage you to read this operations manual carefully in order to get full benefit from all the features and applications of your Humminbird® product.

Contact our Customer Resource Center at either **1-800-633-1468** or visit our website at **www.humminbird.com**.

**WARNING!** This device should not be used as a navigational aid to prevent collision, grounding, boat damage, or personal injury. When the boat is moving, water depth may change too quickly to allow time for you to react. Always operate the boat at very slow speeds if you suspect shallow water or submerged objects.

**WARNING!** Disassembly and repair of this electronic unit should only be performed by authorized service personnel. Any modification of the serial number or attempt to repair the original equipment or accessories by unauthorized individuals will void the warranty. Handling and/or opening this unit may result in exposure to lead, in the form of solder.

**WARNING!** This product contains lead, a chemical known to the state of California to cause cancer, birth defects and other reproductive harm.

Humminbird®, WhiteLine®, RTS®, X-Press™ Menu, Fish ID+™, and Structure ID® are trademarked by or registered trademarks of Humminbird®.

© 2004. All rights reserved.

## Table of Contents

<b>How Sonar Works</b>	<b>1</b>
<b>Single Beam Sonar</b>	<b>1</b>
<b>What's On the Display</b>	<b>2</b>
<b>Views</b>	<b>4</b>
Sonar View	4
Understanding Sonar History	5
Real Time Sonar (RTS®) Window	5
Sonar Zoom View	6
Big Digits View	7
Bottom Presentation	8
<b>Key Functions</b>	<b>9</b>
POWER/LIGHT Key	9
VIEW Key	9
MENU Key	10
4-WAY Cursor Control Key	10
EXIT Key	10
<b>Powering Up the Unit</b>	<b>11</b>
<b>The Menu System</b>	<b>11</b>
<b>Start-Up Options Menu</b>	<b>13</b>
Normal Operation	13
Simulator	14
System Status	15
<b>Sonar X-Press™ Menu</b>	<b>16</b>
Sensitivity	17
Upper Range (Advanced: Sonar and Big Digits View Only)	18
Lower Range	18

## Table of Contents

Chart Speed	19
Bottom View	19
Zoom Level (Sonar Zoom View Only)	20
<b>Sonar Menu Tab</b>	<b>21</b>
Fish ID+™	22
Fish Sensitivity	23
Real Time Sonar (RTS®) Window (Sonar View Only)	23
Depth Lines (Advanced)	24
Surface Clutter (Advanced)	25
Noise Filter (Advanced)	26
Max Depth (Advanced)	26
Water Type (Advanced)	27
<b>Alarms Menu Tab</b>	<b>28</b>
Depth Alarm	28
Fish ID Alarm	29
Low Battery Alarm	30
Temp Alarm	30
Alarm Tone	30
<b>Setup Menu Tab</b>	<b>31</b>
Units - Depth	32
Units - Temp (International Only)	32
Units - Distance (with Temp/Speed Only)	32
Units - Speed (with Temp/Speed Only)	33
User Mode	33
Language (International Only)	33
Triplog Reset (with Temp/Speed Only)	34
Restore Defaults	34
Select Views (Advanced)	35
Select Readouts (Advanced, Sonar View Only)	36
Depth Offset (Advanced)	37
Temp Offset (Advanced)	37
Speed Calibration (Advanced, with Temp/Speed Only)	37

## Table of Contents

<b>Troubleshooting</b>	<b>38</b>
FishFinder Doesn't Power Up .....	38
FishFinder Defaults to Simulator with a Transducer Attached .....	38
Display Problems.....	39
Finding the Cause of Noise .....	40
<b>Humminbird® FishFinder Accessories</b>	<b>40</b>
<b>Specifications</b>	<b>41</b>
<b>Contact Humminbird®</b>	<b>42</b>

## How Sonar Works

Sonar technology is based on sound waves. The Humminbird® FishFinder uses sonar to locate and define structure, bottom contour and composition, as well as depth directly below the transducer.

Your FishFinder sends a sound wave signal and determines distance by measuring the time between the transmission of the sound wave and when the sound wave is reflected off of an object; it then uses the reflected signal to interpret location, size, and composition of an object.

Sonar is very fast. A sound wave can travel from the surface to a depth of 240 ft (70 m) and back again in less than ¼ of a second. It is unlikely that your boat can "outrun" this sonar signal.

## Single Beam Sonar

Your Humminbird® FishFinder 585c uses a 200 kHz single beam sonar system with a 20° area of coverage. Depth capability is affected by such factors as boat speed, wave action, bottom hardness, water conditions and transducer installation.



**NOTE:** Entries in this Table of Contents which list (International Only) are only available on products sold outside of the US and Canada by our authorized International Distributors. To obtain a list of authorized International Distributors, please visit our website at [www.humminbird.com](http://www.humminbird.com) or contact our Customer Resource Center at 1-800-633-1468 to locate the distributor nearest you.

**NOTE:** Entries in this Table of Contents which list (with Temp/Speed Only) require the purchase of separate accessories. You can visit our website at [www.humminbird.com](http://www.humminbird.com) to order these accessories online or contact our Customer Resource Center at 1-800-633-1468.

### What's On the Display

The Humminbird® FishFinder can display a variety of useful information about the area under and adjacent to your boat, including the following items:

**Depth** - water depth; can be set to alarm when the water becomes too shallow.

**Temperature** - water surface temperature.

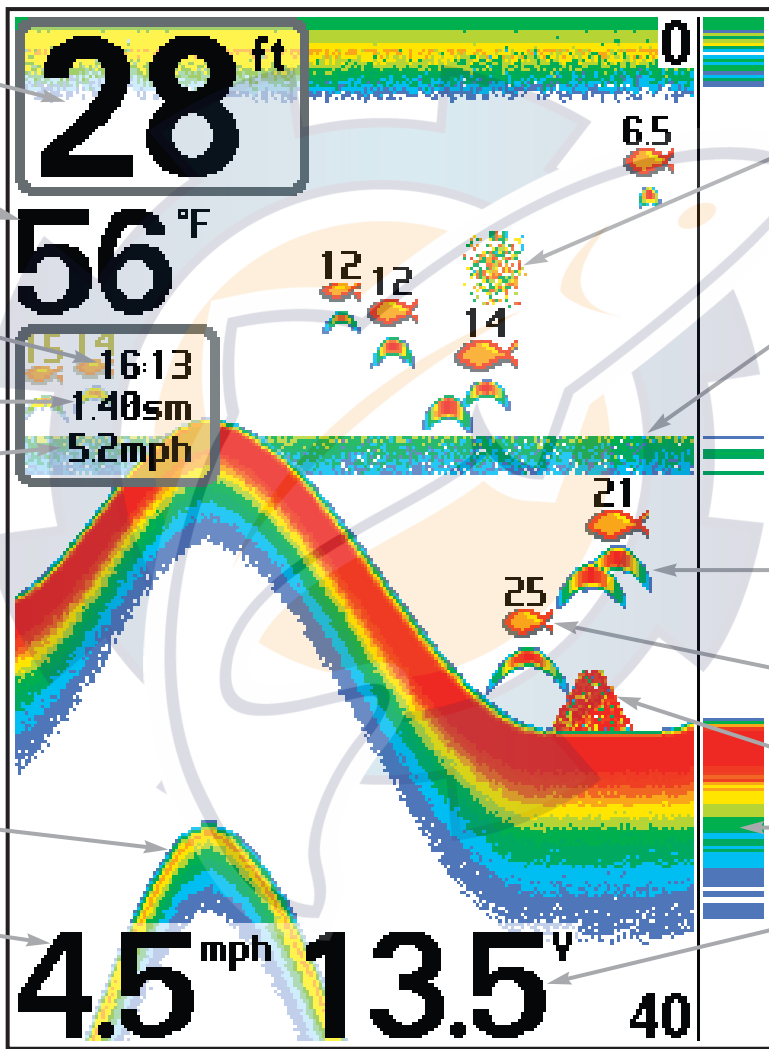
**Timer** - Elapsed time with Temp/Speed Accessory.

**Distance** - Distance traveled with Temp/Speed Accessory.

**Average Speed** - Average speed reading with Temp/Speed Accessory.

**Second Sonar Return** - when the sonar signal bounces between the bottom and the surface of the water and back again. Use the appearance of the second return to determine bottom hardness. Hard bottoms will show a strong second return, while soft bottoms will show a very weak one or none at all.

**Speed** - if a Temp/Speed accessory is attached, the FishFinder can display the speed of the boat, and can keep a Triplog of nautical or statute miles traveled.



**High Sonar Intensity Return**

**Bait Ball**

**Thermoclines** - layers of water with different temperatures that appear at different depths and different times of the year. A thermocline typically appears as a continuous band of many gray levels moving across the display at the same depth.

**Fish** - the FishFinder displays fish as arches and/or fish icons, and can be set to alarm when a fish of a certain size is detected. When a target is detected, a Fish ID+™ symbol appears on the display with the depth displayed above it. The size of the symbol indicates the intensity of the sonar return. The unit will clearly show schools of Bait Fish as "clouds" of different shapes and sizes, depending on the number of fish and boat speed.

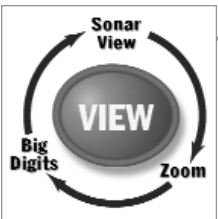
**200 kHz, Orange Fish Symbol**

**Structure** - where fish may be hiding.

**RTS® (Real Time Sonar) Window**

**Battery Voltage** - the voltage of the boat's battery; can be set to alarm if the voltage falls below a certain point.

**Low Sonar Intensity Return**



**Views**

The views available on your FishFinder are:

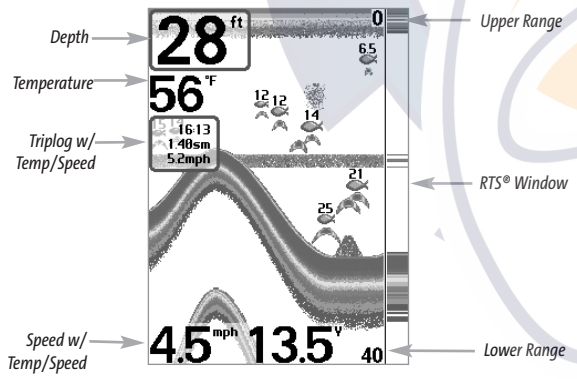
- Sonar View
- Zoom View
- Big Digits View.

**Sonar View** is the default view. When the VIEW key is pressed, the display cycles through the available views. When the EXIT key is pressed, the display cycles through the available views in reverse order. Any view can be hidden or displayed as part of the view rotation using Select View from the Advanced Setup Menu.

*NOTE: When you change any menu settings that affect the sonar, the view will update immediately (i.e. you don't have to exit the menu to apply the change to the screen).*

**Sonar View**

**Sonar View** presents a historical log of sonar returns. Depth is always displayed. Readouts for temperature and speed are automatically displayed if the appropriate accessory is connected. The most recent sonar returns are charted on the right side of the window; as new information is received, the older information is moved across the display to the left.



A Digital Depth Readout is displayed in the upper left corner. A scale with Upper and Lower Depth Range readouts appears along the right edge of the Sonar View. The scale indicates the distance from the surface of the water to a depth range sufficient to show

the bottom. Depth Range is automatically selected to keep the bottom visible on the display, although you can adjust it manually as well (see **Sonar X-Press™ Menu**). Five additional Digital Readouts display information from optional-purchase accessories. These information boxes can be customized to show only the information desired (see **Setup Menu Tab, Select Readouts**).

*NOTE: If the Depth number is flashing, it means that the unit is having trouble locating the bottom. This usually happens if the water is too deep, the transducer is out of the water, the boat is moving too fast, or for any other reason that the unit can't accurately receive continuous data.*

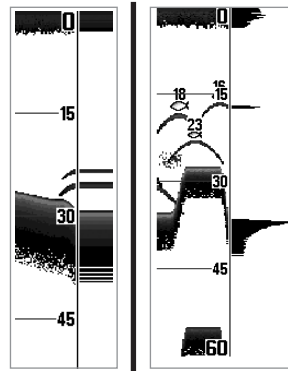
**Understanding Sonar History**

It is important to understand the significance of the Humminbird® display. The display does NOT show a literal 3-dimensional representation of what is under the water. Each vertical band of data received by the control head and plotted on the display represents something that was detected by a sonar return at a particular time. As both the boat and the targets (fish) may be moving, the returns are only showing a particular segment of time when objects were detected, not exactly where those objects are in relation to other objects shown on the display.

**Real Time Sonar (RTS®) Window**

A Real Time Sonar (RTS®) window appears on the right side of the display in the Sonar View only. The RTS® Window always updates at the fastest rate possible for depth conditions and shows only the returns from the bottom, structure and fish that are within the transducer beam. The RTS® Window plots the depth and intensity of a sonar return (see **Sonar Menu - RTS® Window**).

The **Narrow RTS® Window** indicates the sonar intensity through the use of colors. Red indicates a strong return and blue indicates a weak return. The depth of the sonar return is indicated by the vertical placement of the return on the display depth scale.



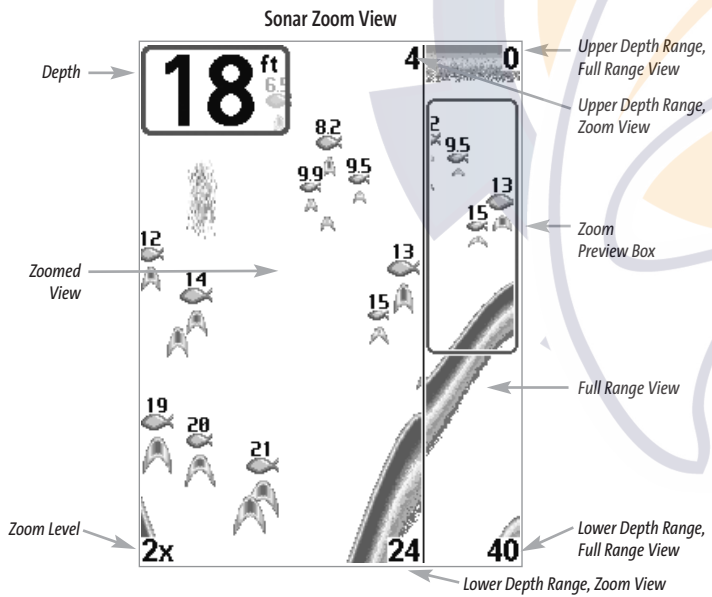
The **Wide RTS® Window** indicates the sonar intensity through the use of a bar graph. The length of the plotted return provides an indication of whether the return is weak or strong. The depth of the sonar return is indicated by the vertical placement of the return on the display depth scale.

### Sonar Zoom View

**Sonar Zoom View** increases the displayed resolution to separate sonar returns that are very close together, such as those caused by fish suspended close to the bottom or within structure. In Zoom View, the display is split to show a narrow slice of the full range view on the right and the zoomed view on the left. The full range view on the right also contains the Zoom Preview Box that shows what part of the full range view is shown in zoom view on the left; the Zoom Preview Box tracks the bottom in the full range view.

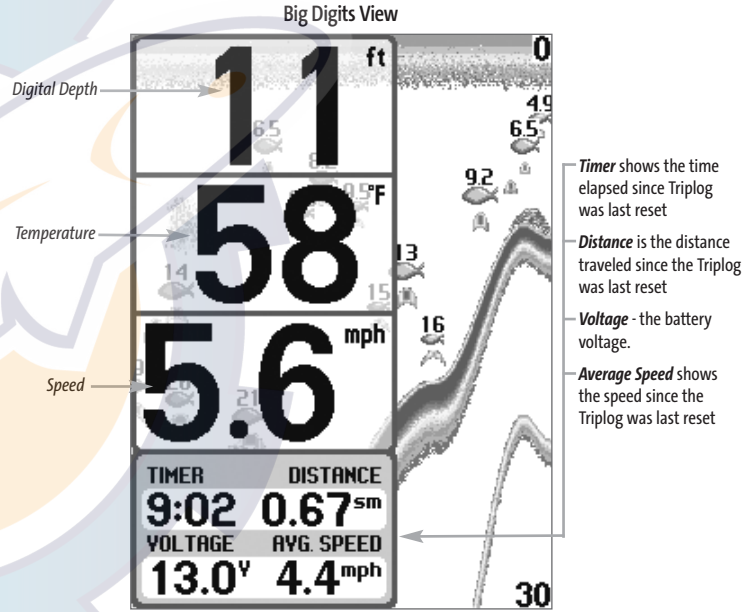
As the depth changes, the zoomed view updates automatically to display a magnified image of the bottom. The Zoom Preview Box shows where the zoomed view is in relation to the full range view. The Zoom Level, or magnification, is displayed in the lower left corner and can be changed to suit conditions (see *Sonar X-Press™ Menu: Zoom Level*). Upper and Lower Zoom Depth Range numbers indicate the depth of the water which is being viewed.

Digital depth is displayed in the upper left hand corner. No additional digital readouts, such as Temperature or Voltage, can be displayed in the Sonar Zoom View.



### Big Digits View

**Big Digits View** provides digital data in a large, easy-to-see format. Depth is always displayed. Readouts for temperature, speed and Triplog information are displayed automatically if the appropriate accessory is connected to the system. The Triplog shows distance traveled, average speed, and time elapsed since the Triplog was last reset. The digital readouts in the Big Digits View cannot be customized.

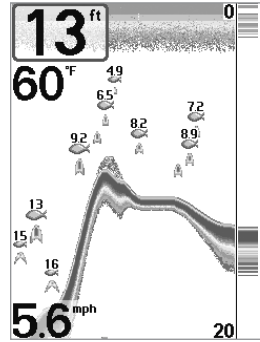


### Bottom Presentation

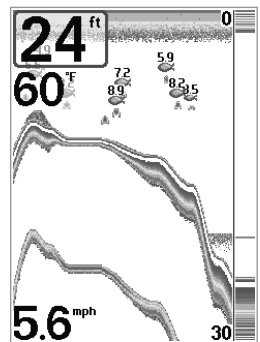
As the boat moves, the unit charts the changes in depth on the display to create a profile of the **Bottom Contour**. The type of bottom can be determined from the return charted on the display. A **Hard Bottom** such as compacted sediment or flat rock appears as a thinner line across the display. A **Soft Bottom** such as mud or sand appears as a thicker line across the display. **Rocky Bottoms** have a broken, random appearance.

*NOTE: A sloping bottom will be represented as a thicker line across the display. Also, harder bottoms will be typically displayed with red and softer bottoms will be typically displayed with blue.*

The sonar returns from the bottom, structure and fish can be represented as either **Structure ID**®, or **Whiteline**®. See *Sonar X-Press™ Menu: Bottom View* for details on how to set the bottom view.



**Structure ID**® represents weak returns in blue and strong returns in red.



**Whiteline**® highlights the strongest sonar returns in white resulting in a distinctive outline. This has the benefit of clearly defining the bottom on the display.

### Key Functions

Your Humminbird® user interface consists of a set of easy-to-use keys that work with various on-screen views and menus to give you flexibility and control over your fishing experience.



#### POWER/LIGHT Key

The **POWER/LIGHT** key is used to turn the FishFinder on and off, and also to adjust the backlight and background color of the display. Press the **POWER/LIGHT** key to turn the unit on. The Title screen is then displayed until the FishFinder begins sonar operation.



To adjust the backlight, or to adjust the display background color, press the **POWER/LIGHT** key to access the **Light** and **Background** menu. Use the **4-WAY** Cursor key to select **Light** or **Background** and then use the **LEFT** or **RIGHT** Cursor key to change the settings. Press **EXIT** to exit the **Light** and **Background** menu.

Press and hold the **POWER/LIGHT** key for 3 seconds to turn the unit off. A message will appear telling you how many seconds there are until shutdown occurs. Your FishFinder should always be turned off using the **POWER/LIGHT** key. This will ensure that shutdown occurs properly and any menu settings will be saved.



#### VIEW Key

The **VIEW** key is used to cycle through all available views. Press the **VIEW** key to advance to the next view. Repeatedly pressing **VIEW** cycles through all views available. Views can be hidden to optimize the system to your fishing requirements (see *Setup Menu Tab: Select Views, Advanced*).





## MENU Key

The MENU key is used to access the menu system.

**Start-Up Options Menu** - Press the MENU key during the power up sequence to view the Start-Up Options menu.

**X-Press™ Menu** - Press the MENU key once for the Sonar X-Press™ Menu. The X-Press™ menu allows you to access frequently-used settings without having to navigate through the whole menu system. When the X-Press™ menu is displayed, you can use the UP or DOWN Cursor keys to move to a particular menu choice. As soon as you alter a parameter (using the RIGHT or LEFT Cursor keys) the X-Press™ menu will collapse temporarily, and the screen will update if it is affected by your menu setting change, allowing you to see the effects of your action immediately. Reactivate the X-Press™ Menu by using the UP or DOWN Cursor keys.

**Main Menu** - Press the MENU key twice for the tabbed Main Menu System. The Main Menu System is organized under tabbed headings to help you find a specific menu item quickly: Alarms, Sonar and Views tabs are part of your tabbed Main Menu System. Use the LEFT or RIGHT 4-Way Cursor Control key to select a tab; then use the DOWN or UP key to select the menu item, and the LEFT or RIGHT key to alter a menu setting.



## 4-Way Cursor Control Key

Use the DOWN or UP arrow keys to select a menu choice from the menu list, then use the LEFT or RIGHT arrow keys to change a menu setting.

*NOTE: Menu choices are implemented and saved immediately - no further action is required.*



## EXIT Key

The EXIT key has multiple functions, depending on the situation:

- If an alarm is sounding, pressing EXIT will cancel the alarm.
- If a menu tab is selected, pressing EXIT will exit the menu mode and return to the view.
- If a menu is active, pressing EXIT will return to the previous level in the menu system.
- Pressing EXIT will cycle through the available views in reverse order.



Press MENU for Startup Options

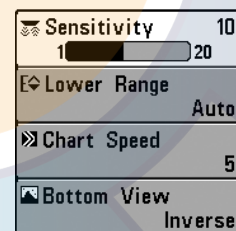
FishFinder 585c Title Screen

## Powering Up the Unit

Turn on your FishFinder by pressing the POWER/LIGHT key. The Title screen is displayed until the FishFinder begins operation. Your FishFinder will begin Normal or Simulator operation, depending on the presence or absence of a transducer.

## The Menu System

The menu system is divided into easy-to-use menu modules. The main components of the menu system are:

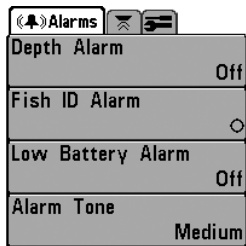


X-Press™ Menu

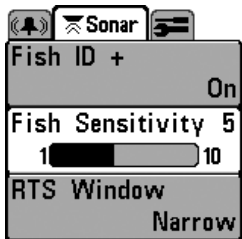
**Start-Up Options Menu** - Press the MENU key during the power up sequence to view the Start-Up Options menu.

**X-Press™ Menu** - The X-Press™ menu allows you to access the settings that are changed frequently without having to navigate through the whole menu system. Press the MENU key once to display the X-Press™ Menu. When you select a menu item from the X-Press™ menu, the menu will collapse, leaving only the menu choice on the screen. Use the Up or Down Cursor keys to reactivate the X-Press™ menu.

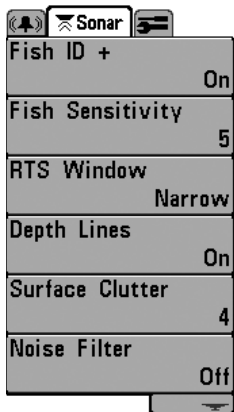
*NOTE: The X-Press™ Menu choices will vary depending on which view is active when you press the MENU key, as well as whether you are in Normal or Advanced user mode.*



Main Menu System  
Normal User Mode



Sonar Tab, Normal Mode



Sonar Tab, Advanced Mode

**Main Menu Tabs** - Less frequently-adjusted menus are grouped into the Main Menu System. The Main Menu system is organized under the following tab headings to help you find a specific menu item quickly: Alarms, Sonar and Setup. Press the MENU key twice for the Main Menu, then use the 4-Way Cursor LEFT or RIGHT key to select a tab, and use the DOWN or UP key to select a specific menu item under that tab, then use the LEFT or RIGHT keys again to change a menu setting. Press the EXIT key to move quickly to the top of the tab. A down arrow at the bottom of a menu means that you can scroll to additional menu choices using the DOWN Cursor key. A right or left arrow on a menu choice means that you can use the RIGHT or LEFT Cursor keys to make changes or see more information.

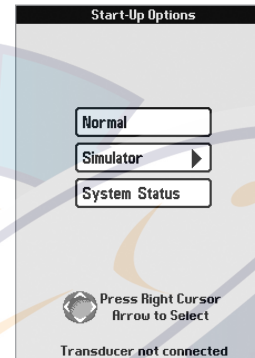
*NOTE: The Main Menu choices will vary depending on whether you are in Normal or Advanced user mode.*

**User Mode (Normal or Advanced)** - An Advanced Mode is provided for users who desire the highest level of control over the FishFinder, and Normal Mode for users who desire greater simplicity and fewer menu choices. Additional Advanced menu choices will be displayed throughout the menu system when you navigate to specific menus while in Advanced Mode. Any changes made while in Advanced Mode will remain in effect after you switch back to Normal Mode. See *Setup Menu Tab: User Mode* for specific instructions on changing to Advanced User Mode.

**Total Screen Update** - when you change any menu settings that affect the Sonar View, the view will update immediately (i.e. you don't have to exit the menu to apply the change to the screen).

## Start-Up Options Menu

Press the MENU key when the Title screen is displayed to access the Start-Up Options menu.



Start-Up Options Menu

Use the UP and DOWN 4-Way Cursor keys to position the cursor, then the RIGHT Cursor key to select one of the following choices. If you wait too long, the system will default to whichever menu mode happens to be highlighted:

- Normal
- Simulator
- System Status.

See the following paragraphs for more information about each of these choices.

## Normal Operation

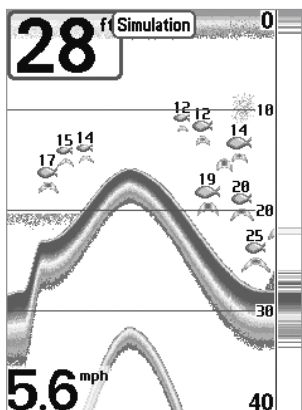
Use Normal operation for on the water operation with a transducer connected. In addition, your FishFinder uses advanced transducer detection methods to determine if a transducer is connected. If a functioning transducer is connected, Normal operation will be selected automatically at power up and your FishFinder can be used on the water.

Exit Normal operation by powering your FishFinder off.

## Simulator

Use the Simulator to learn how to use your FishFinder before taking your boat on the water. The Simulator is a very powerful tool that simulates on the water operation, providing a randomly-updated display. We recommend going through this manual while using the Simulator, since all of the menu function and affect the display the way they actually do when in Normal operating state.

**NOTE:** To get the full benefit of the Simulator, it is important to select Simulator manually from the Start-Up Options menu as opposed to letting the FishFinder enter Simulator automatically (as it will if a transducer is not connected and you do nothing during power up). Manually selecting Simulator from the Start-Up Options menu allows you to pre-configure your FishFinder for on the water operation. Any menu changes you make will be saved for later use.



Simulator

A message will appear on the display periodically to remind you that you are using the Simulator.

Exit the Simulator by powering your FishFinder off.

SYSTEM STATUS	
Self Test	
PASSED	
S/N	
41028998001	
SOFTWARE VERSION	
2.540	
VOLTAGE	TOTAL TIME
12.7 <sup>v</sup>	0 hrs
PCB S/N	
00 410281652	
Press VIEW for Next Screen	

System Status Self Test Screen

SYSTEM STATUS	
ACCESSORY TEST	
Speed	CONNECTED
Temperature	CONNECTED

Accessory Test Screen

## System Status

Use System Status to view system connections and to conduct a unit self-test.

The following screens are displayed in turn when you press the VIEW button when using System Status:

- Self Test
- Accessory Test.

**Self Test** displays results from the internal diagnostic self test, including unit serial number, Printed Circuit Board (PCB) serial number, software revision, total hours of operation and the input voltage.

**NOTE:** Your new unit may show many hours of operation due to product testing performed at the manufacturing facility.

**Accessory Test** lists the accessories connected to the system.

**NOTE:** The speed accessory will be detected only if the paddlewheel has moved since your FishFinder was powered up.

Exit System Status by powering your FishFinder off.

Sensitivity	10
Upper Range	0ft
Lower Range	Auto
Chart Speed	5
Bottom View	Inverse
Zoom Level	2x

Sonar X-Press™ Menu

### Sonar X-Press™ Menu

The **Sonar X-Press™** menu provides access to the settings most frequently-used. Press the MENU key once while in any of the Sonar Views to access the Sonar X-Press™ menu.

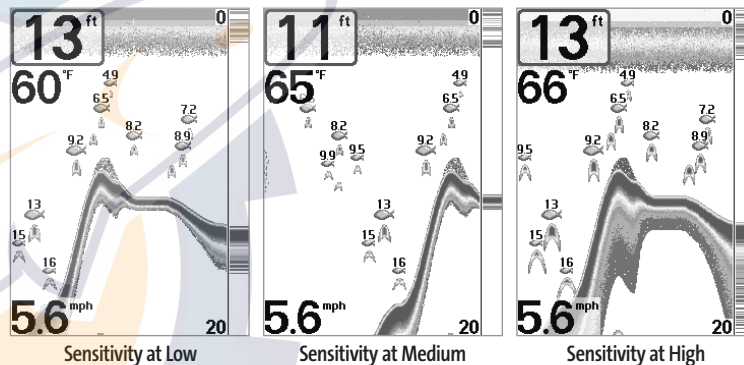
*NOTE: Upper Range only appears in Advanced User Mode when in Sonar or Big Digits View.*

*NOTE: Zoom Level only appears in Sonar Zoom View.*

Sensitivity	10
Upper Range	0ft
Lower Range	Auto
Chart Speed	5
Bottom View	Inverse
Zoom Level	2x

### Sensitivity

**Sensitivity** controls how much detail is shown on the display. Increasing the sensitivity shows more sonar returns from small baitfish and suspended debris in the water; however, the display may become too cluttered. When operating in very clear water or greater depths, increased sensitivity shows weaker returns that may be of interest. Decreasing the sensitivity eliminates the clutter from the display that is sometimes present in murky or muddy water. If Sensitivity is adjusted too low, the display may not show many sonar returns that could be fish.



#### To adjust the Sensitivity:

1. Highlight Sensitivity on the Sonar X-Press™ menu.
2. Use the LEFT or RIGHT 4-Way Cursor Control keys to increase or decrease the Sensitivity setting. (Low = 1, High = 20, Default = 10)



### Upper Range

(Advanced: Sonar and Big Digits Views Only)

**Upper Range** sets the shallowest depth range that will be displayed on the Sonar and Big Digits Views. The Upper Range menu choice is available when User Mode is set to Advanced (see *Setup Menu Tab: User Mode*). Upper Range is often used with Lower Range.

For example, if you are only interested in the area between 20 and 50 feet deep, you should set the Upper Depth Range to 20 and the Lower Depth Range to 50. The Sonar View will then show the 30 foot area between 20 and 50, and will not show the surface or the bottom (assuming the bottom is deeper than 50 feet), and will show greater detail for that area between 20 and 50 feet.

#### To adjust the Upper Range:

1. Make sure you are in Advanced Mode, then highlight Upper Range on the Sonar X-Press™ menu.
2. Use the LEFT or RIGHT 4-Way Cursor Control keys to increase or decrease the Upper Range setting. (0 to 990 feet or 0 to 327 meters *[International Models Only]*, Default = 0)



### Lower Range

**Lower Range** sets the deepest depth range that will be displayed. Automatic is the default setting. When in automatic mode, the lower range will be adjusted by the unit to follow the bottom. Selecting a specific setting locks the depth range into Manual mode. Use both Upper and Lower Range together to view a specific depth range manually when looking for fish or bottom structure. **M** will be displayed in the lower right corner of the screen when you start manually adjusting the Lower Range to indicate that you are in Manual mode.

For example, if you are fishing in 60 feet of water but are only interested in the first 30 feet (surface to a depth of 30 feet) you should set the Lower Depth Range limit to 30. The display will show the 0 to 30 foot range, allowing you to see a more detailed view than you would see if the display went all the way to the bottom.

#### To adjust the Lower Range:

1. Highlight Lower Range on the Sonar X-Press™ menu.
2. Use the LEFT or RIGHT 4-Way Cursor Control keys to increase or decrease the Lower Range setting. (AUTO, 10 to 1000 feet, 3 to 330 meters *[International Models Only]*, Default = AUTO)



### Chart Speed

**Chart Speed** determines the speed at which the sonar information moves across the display, and consequently the amount of detail shown. A faster speed shows more information in the Sonar View and is preferred by most anglers; however, the sonar information moves across the display quickly. A slower speed keeps the information on the display longer, but the bottom and fish details become compressed and may be difficult to interpret. Regardless of the Chart Speed setting, the RTS® Window will update at the maximum rate possible for the depth conditions. Adjust Chart Speed to your personal preference.

#### To adjust the Chart Speed:

1. Highlight Chart Speed on the Sonar X-Press™ menu.
2. Use the LEFT or RIGHT 4-Way Cursor Control keys to increase or decrease the Chart Speed setting. (1-9, Ultra, where 1 = Slow, 9 = Fast, Ultra = Fastest, Default = 4)

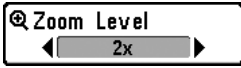


### Bottom View

**Bottom View** selects the method used to represent bottom and structure on the display. **Structure ID®** represents weak returns in blue and strong returns in red. **WhiteLine®** highlights the strongest sonar returns in white resulting in a distinctive outline. This has the benefit of clearly defining the bottom on the display. (See *Bottom Presentation* for more information.)

#### To adjust the Bottom View:

1. Highlight Bottom View on the Sonar X-Press™ menu.
2. Use the LEFT or RIGHT 4-Way Cursor Control keys to change the Bottom View setting. (Structure ID, WhiteLine, Default = Structure ID)



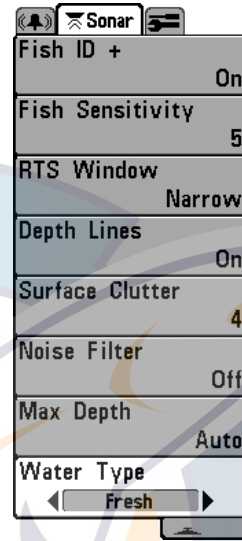
**Zoom Level**  
(Sonar Zoom View Only)

**Zoom Level** sets the magnification level for the Sonar Zoom View, and is only available on the X-Press™ menu when the Sonar Zoom View is active. Use Zoom to increase the display resolution to separate sonar returns that are very close together.

**To adjust the Zoom Level:**

1. Highlight Zoom Level on the Sonar X-Press™ menu.
2. Use the LEFT or RIGHT 4-Way Cursor Control keys to change the Zoom Level setting for the Sonar Zoom View. (2x, 4x, 6x, 8x, Default = 2x)

*NOTE: The Zoom Preview Box tracks the bottom and cannot be moved by the user.*

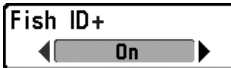


**Sonar Menu Tab**

Press the MENU key twice to access the Main Menu System and then press the RIGHT Cursor key to select the Sonar tab.

*NOTE: Depth Lines, Surface Clutter, Noise Filter, Max Depth, and Water Type only appear in Advanced User Mode.*

Sonar Menu

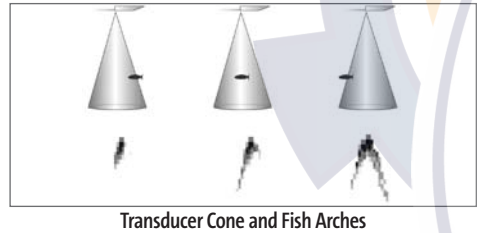


### Fish ID+™

**Fish ID+™** uses advanced signal processing to interpret sonar returns, and will display a Fish Symbol when very selective requirements are met. When a fish is detected, a fish icon and its depth are displayed above the return that has been classified as being a fish. Three different fish size icons represent the intensity of the sonar return, and provide an indicator of relative fish size. Single beam sonar FishFinders represent targets as orange Fish Symbols.

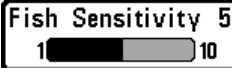


When Fish ID+™ is turned off, the FishFinder shows only the raw sonar returns on the display. These returns will often result in "arches" forming on the display, indicating potential targets. Due to the transducer beam angle, the distance to a fish decreases as the fish moves into the beam, and then increases as it moves out again, creating a Fish Arch when this distance change is shown on the display. Boat speed, chart speed, and the position of the fish within the sonar beam greatly affect the shape of the arch.



#### To turn Fish ID+™ on or off:

1. Highlight Fish ID+ on the Sonar main menu.
2. Use the LEFT or RIGHT 4-Way Cursor Control keys to turn the Fish ID+™ setting On or Off. (On, Off, Default = On)



### Fish Sensitivity

**Fish Sensitivity** adjusts the threshold of the Fish ID+™ detection algorithms. Selecting a higher setting allows weaker returns to be displayed as fish. This is useful for identifying smaller fish species or baitfish. Selecting a lower setting displays fewer fish from weak sonar returns. This is helpful when seeking larger species of fish. Fish Sensitivity is used in conjunction with Fish ID+™. Fish ID+™ must be On for Fish Sensitivity to affect the ability of the FishFinder to identify sonar returns as fish.

#### To change the Fish Sensitivity setting:

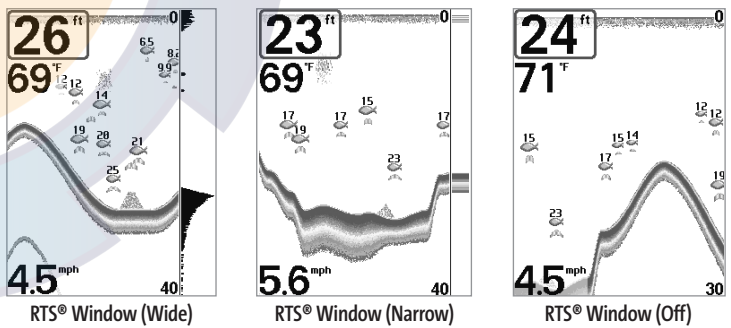
1. Highlight Fish Sensitivity on the Sonar main menu.
2. Use the LEFT or RIGHT 4-Way Cursor Control keys to change the Fish Sensitivity setting. (Low = 1, High = 10, Default = 5)



### Real Time Sonar (RTS®) Window

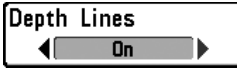
(Sonar View Only)

**RTS® Window** sets the RTS® window to either Wide or Narrow, or turns it off in the Sonar View. The RTS® window always updates at the fastest rate possible and only displays returns that are within the transducer beam. (See *Real Time Sonar (RTS®) Window* for additional detail).



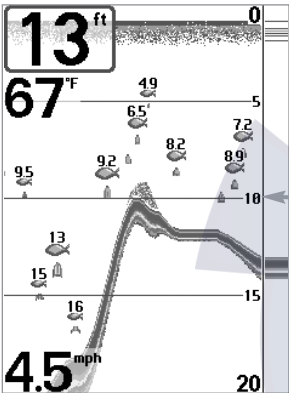
#### To change the RTS® Window setting:

1. Highlight RTS Window on the Sonar main menu.
2. Use the LEFT or RIGHT 4-Way Cursor Control keys to change the RTS® Window setting. (Wide, Narrow, Off, Default = Narrow)



**Depth Lines**  
(Advanced)

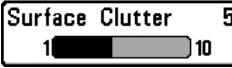
**Depth Lines** divide the display into four equal sections which are separated by three horizontal depth lines. The depth of each line is displayed along the depth scale. You can either turn Depth Lines On or Off. The Depth Lines menu choice is available when User Mode is set to Advanced (see *Setup Menu Tab: User Mode*).



Depth Lines

**To change the Depth Lines setting:**

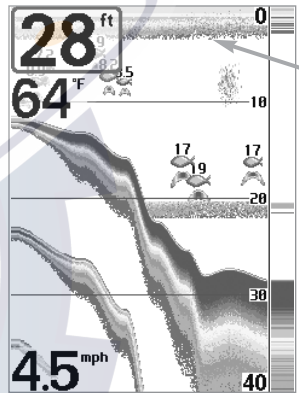
1. Make sure you are in Advanced User Mode, then highlight Depth Lines on the Sonar main menu.
2. Use the LEFT or RIGHT 4-Way Cursor Control keys to turn the Depth Lines setting On or Off. (Off, On, Default = Off)



**Surface Clutter**  
(Advanced)

**Surface Clutter** adjusts the filter that removes surface clutter noise caused by algae and aeration. The lower the setting, the less surface clutter will be displayed. The Surface Clutter menu choice is available when User Mode is set to Advanced (see *Setup Menu Tab: User Mode*).

*NOTE: If the Surface Clutter menu is set to lower than 5, it will also decrease the displayed signal strength of targets (fish) close to the surface.*



Surface Clutter

**To change the Surface Clutter setting:**

1. Make sure you are in Advanced User Mode, then highlight Surface Clutter on the Sonar main menu.
2. Use the LEFT or RIGHT 4-Way Cursor Control keys to change the Surface Clutter setting. (Low = 1 to High = 10, Default = 5)





## Noise Filter (Advanced)

**Noise Filter** adjusts the sonar Noise Filter to limit interference on the display from sources such as your boat engine, turbulence, or other sonar devices. The Noise Filter menu choice is available when User Mode is set to Advanced (see *Setup Menu Tab: User Mode*).

**NOTE:** The Off setting removes all filtering; Low, Medium and High settings add progressive filtering of the sonar returns. In some deep water situations, the High setting may actually hinder your FishFinder's ability to find the bottom.

### To change the Noise Filter setting:

1. Make sure you are in Advanced User Mode, then highlight Noise Filter on the Sonar main menu.
2. Use the LEFT or RIGHT 4-Way Cursor Control keys to change the Noise Filter setting. (Off, Low, Medium, High, Default = Low)

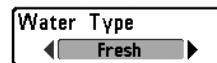


## Max Depth (Advanced)

**Max Depth** adjusts the maximum depth of operation. The performance of your FishFinder can be tuned to the maximum depth you will be fishing in by setting the Max Depth. When a maximum depth is set, your FishFinder will not attempt to acquire sonar data below that depth, thus increasing overall performance. When Max Depth is set to Auto, the FishFinder will acquire bottom readings as needed (within the capacity of the unit). If the bottom is deeper than the Max Depth setting, the digital depth readout will flash, indicating that the FishFinder cannot locate the bottom. The Max Depth menu choice is available when User Mode is set to Advanced (see *Setup Menu Tab: User Mode*).

### To change the Max Depth setting:

1. Make sure you are in Advanced User Mode, then highlight Max Depth on the Sonar main menu.
2. Use the LEFT or RIGHT 4-Way Cursor Control keys to change the Max Depth setting. (AUTO, 10 to 1000 feet or 3 to 330 meters [*International Models Only*], Default = AUTO)



## Water Type (Advanced)

**Water Type** configures your unit for operation in fresh or salt water. The Water Type menu choice is available when User Mode is set to Advanced (see *Setup Menu Tab: User Mode*).

**NOTE:** In salt water, what would be considered a large fish might be 2 to 10 times bigger than a large fish in fresh water (depending on the type of fish you are seeking). The salt water setting allows for a greater range in fish size adjustment to account for this. Also, make sure that the Water Type is set accurately, especially in salt water, as this affects the accuracy of deep water depth readings.

### To change the Water Type setting:

1. Make sure you are in Advanced User Mode, then highlight Water Type on the Sonar main menu.
2. Use the LEFT or RIGHT 4-Way Cursor Control keys to change the Water Type setting. (Fresh, Salt, Default = Fresh)

Alarms	
Depth Alarm	Off
Fish ID Alarm	<input type="radio"/>
Low Battery Alarm	Off
Temp. Alarm	Off
Alarm Tone	Medium

Alarms Menu

### Alarms Menu Tab

From any view, press the MENU key twice to access the Main Menu System. The Alarms tab will be the default selection.

*NOTE: When an alarm is triggered, you can silence it by pressing any key. The alarm will be silenced, and will not be triggered again until you enter a new instance of the alarm condition.*

Depth Alarm	Off
Off	100

### Depth Alarm

Depth Alarm sounds when the depth becomes equal to or less than the menu setting.

#### To change the Depth Alarm setting:

1. Highlight Depth Alarm on the Alarms main menu.
2. Use the LEFT or RIGHT 4-Way Cursor Control keys to change the Depth Alarm setting. (OFF, 1 to 100 feet, or 5 to 30 meters *[International Models Only]*, Default = OFF)

Fish ID Alarm
<input type="radio"/>

### Fish ID Alarm

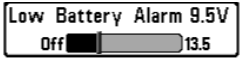
Fish ID Alarm sounds when the FishFinder detects fish that correspond to the alarm setting. Fish ID Alarm will only sound if Fish ID™ is on.

For example, if you've set the Fish ID Alarm to sound for Large fish only, the Fish ID alarm will sound when a large-sized fish is detected.

#### To change the Fish ID Alarm setting:

1. Highlight Fish ID Alarm on the Alarms main menu.
2. Use the LEFT or RIGHT 4-Way Cursor Control keys to change the Fish ID Alarm setting. (Off, All, Large/Medium, Large, Default = Off)

All	
Large/Medium	
Large	

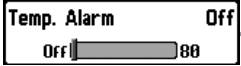


### Low Battery Alarm

**Low Battery Alarm** sounds when the input battery voltage is equal to or less than the menu setting. The battery alarm will only sound for the battery which is connected to the FishFinder. The Low Battery Alarm should be set to warn you when the battery voltage drops below the safety margin that you have determined. For instance, if you are running a trolling motor (battery operated), you would want to set the Low Battery Alarm to sound before the battery voltage drops too low for it to be used to start your main, gasoline-powered engine.

**To change the Low Battery Alarm setting:**

1. Highlight Low Battery Alarm on the Alarms main menu.
2. Use the LEFT or RIGHT 4-Way Cursor Control keys to change the Low Battery Alarm setting. (Off, 8.5V - 13.5V, Default = Off)



### Temp Alarm

**Temp Alarm** sounds when the water temperature detected by the FF585c reaches the Temp Alarm setting, which is either set in degrees Fahrenheit or Celsius [International Models Only]. For example, if the Temp Alarm is set to 58 degrees Fahrenheit, and the water temperature falls from 60 degrees to 58 degrees, the Temp Alarm will sound. Similarly, if the water temperature rises from 56 degrees to 58 degrees, the Temp Alarm will also sound.

**To change the Temp Alarm setting:**

1. Highlight Temp Alarm on the Alarms main menu.
2. Use the LEFT or RIGHT 4-Way Cursor Control keys to change the Temp Alarm setting. (Off, 32-120 [Fahrenheit], 0-50 [Celsius *[International Models Only]*], Default = Off)

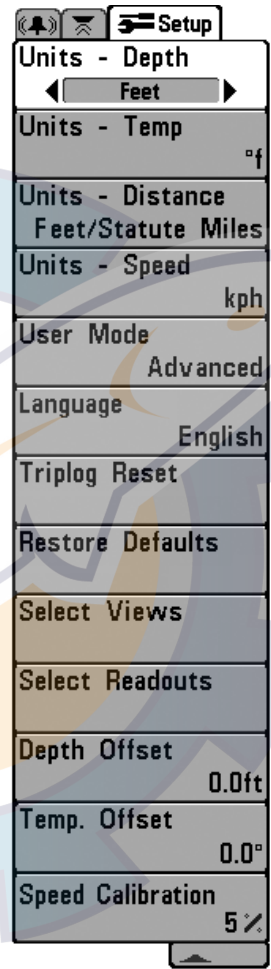


### Alarm Tone

**Alarm Tone** selects the pitch of the alarm sound. A brief tone will be produced as you adjust the Alarm Tone so that you can select the tone that you can hear best.

**To change the Alarm Tone setting:**

1. Highlight Alarm Tone on the Alarms main menu.
2. Use the LEFT or RIGHT 4-Way Cursor Control keys to change the Alarm Tone setting. (High, Medium, Low, Default = Medium)



Setup Menu

### Setup Menu Tab

From any view, press the MENU key twice to access the tabbed Main Menu System, then press the RIGHT cursor key until the Setup tab is selected.

**NOTE:**

- Units - Temp (International Models Only)
- Units - Distance (Only if Temp/Speed is Connected)
- Units - Speed (Only if Temp/Speed is Connected)
- Language (International Models Only)
- Triplog Reset (Only if Temp/Speed is Connected)
- Select Views (Advanced)
- Select Readouts (Advanced)
- Depth Offset (Advanced)
- Temp Offset (Advanced)
- Speed Calibration (Advanced, Only if Temp/Speed Connected)

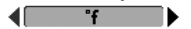
**Units - Depth**

**Units - Depth**

**Units - Depth** selects the units of measure for all depth-related readouts.

**To change the Units - Depth setting:**

1. Highlight Units - Depth on the Setup menu.
2. Use the LEFT or RIGHT 4-Way Cursor Control keys to change the Units - Depth setting. (Meters [*International Models Only*], Feet, Fathoms; Default is Meters for International models, and Feet for Domestic models)

**Units - Temp**

**Units - Temp****(International Only)**

**Units - Temp** selects the units of measure for all temperature-related readouts. *International Models Only.*

**To change the Units - Temp setting:**

1. Highlight Units - Temp on the Setup menu.
2. Use the LEFT or RIGHT 4-Way Cursor Control keys to change the Units - Temp setting. (Celsius, Fahrenheit; Default = Celsius)

**Units - Distance**

**Units - Distance****(with Temp/Speed Only)**

**Units - Distance** selects the units of measure for all distance-related readouts, and will only appear in the menu if a Temp/Speed Accessory is connected and the paddlewheel has moved at least once.

**To change the Units - Distance setting:**

1. Highlight Units - Distance on the Setup menu.
2. Use the LEFT or RIGHT 4-Way Cursor Control keys to change the Units - Distance setting. (Domestic Models: Statute Miles, Nautical Miles; Default = Statute Miles; International Models: Meters/Kilometers, Meters/Nautical Miles, Feet/Statute Miles, Feet/Nautical Miles; Default = Meters/Kilometers)

**Units - Speed**

**Units - Speed****(with Temp/Speed Only)**

**Units - Speed** selects the units of measure for speed-related readouts, and will only appear in the menu if a Temp/Speed Accessory is connected and the paddlewheel has moved at least once.

**To change the Units - Speed setting:**

1. Highlight Units - Speed on the Setup menu.
2. Use the LEFT or RIGHT 4-Way Cursor Control keys to change the Units - Speed setting. (kph [*International Models Only*], mph, kts, Default = kph for International models and mph for Domestic models)

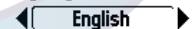
**User Mode**

**User Mode**

**User Mode** sets the menu system to either Normal or Advanced. When set to Normal (default setting,) only the basic menu options are shown. When set to Advanced, additional menu choices are available.

**To change the User Mode setting:**

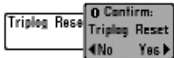
1. Highlight User Mode on the Setup menu.
2. Use the LEFT or RIGHT 4-Way Cursor Control keys to change the User Mode setting. (Normal, Advanced, Default = Normal)

**Language**

**Language****(International Only)**

**Language** selects the display language for menus. *International Models Only.*

**To change the Language setting:**

1. Highlight Language on the Setup menu.
2. Use the LEFT or RIGHT 4-Way Cursor Control keys to change the Language setting. (Default = English)



### Triplog Reset (with Temp/Speed Only)

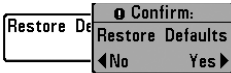
**Triplog Reset** resets the Triplog to zero, and will only appear in the menu if a Temp/Speed Accessory is connected and the paddlewheel has moved at least once. The Triplog provides the following information: timer for elapsed time, distance traveled since last reset, and average speed.

*NOTE:* See **Setup Menu Tab: Select Readouts (Advanced)** to find out how to display Triplog information on the screen.

*NOTE:* The Timer, distance traveled and average speed information is remembered by the FishFinder unit when it is powered off and will continue to be added to until the Triplog is reset.

**To Reset Triplog:**

1. Highlight Reset Triplog on the Setup menu.
2. Use the RIGHT 4-Way Cursor Control key to initiate Triplog Reset.
3. The Confirm dialog box will appear. To reset the Triplog, press the RIGHT Cursor key once more. To cancel Reset Triplog, press the LEFT Cursor key.



### Restore Defaults

**Restore Defaults** resets ALL menu settings to their factory defaults. Use this menu choice with caution!

**To Restore Defaults:**

1. Highlight Restore Defaults on the Setup menu.
2. Use the RIGHT 4-Way Cursor Control key to initiate restoring defaults.
3. The Confirm dialog box will appear. To reset the defaults, press the RIGHT Cursor key once more. To cancel Restore Defaults, press the LEFT Cursor key.

Select Views	
SELF TEST	Hidden
Accessory Test	Hidden
Sonar View	Visible
Sonar Zoom View	Visible
Big Digits View	Visible

Select Views

### Select Views (Advanced)

**Select Views** sets the available views to either hidden or visible in the view rotation. The view will be removed from the view rotation if it is set to Hidden and will be displayed in the view rotation if it is set to Visible. The following views are available: Self Test, Accessory Test, Sonar View, Sonar Zoom View, Big Digits View, and their display status can be changed only when in Advanced User Mode (see **Setup Menu Tab: User Mode.**)

**To Select Views:**

1. Make sure you are in Advanced User Mode, then highlight Select Views on the Setup menu.
2. Use the RIGHT 4-Way Cursor Control key to initiate this procedure.
3. The Select Views submenu will appear, showing a list of all Views that can be hidden or made visible. Use the UP or DOWN Cursor keys to select a particular view, then use the RIGHT or LEFT Cursor keys to change the View status from Visible to Hidden or vice versa.

Select Readouts

Select Readouts	
Readout 1 Temperature	1
Readout 2 Off	2
Readout 3 Off	3
Readout 4 Temperature	4
Readout 5 Off	5

Select Readouts

**Select Readouts**  
(Advanced, Sonar View Only)

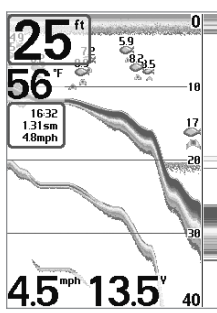
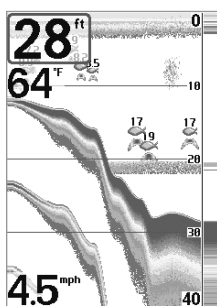
Select Readouts sets individual digital readouts on the Sonar View. This Advanced feature allows you to select what data will be displayed in each of 5 fixed-position data windows arranged around the left and bottom edges of the Sonar View screen, or whether a particular window will be turned off, displaying nothing in that area; you can access this menu choice only when in Advanced User Mode (see *Setup Menu Tab: User Mode*).

Data windows can display readouts from supported accessories such as Temp/Speed. Each data window can either be empty or contain one of the following:

- Speed (will only be displayed if a Temp/Speed Accessory is attached and the paddlewheel has moved at least once)
- Temperature
- Triplog (will only be displayed if a Temp/Speed Accessory is attached and the paddlewheel has moved at least once)
- Voltage

**To Select Readouts:**

1. Make sure you are in Advanced User Mode, then highlight Select Readouts on the Setup main menu.
2. Use the RIGHT 4-Way Cursor Control key to initiate this procedure.
3. The Select Readouts submenu will appear, showing a list of all Readouts. Use the UP or DOWN Cursor keys to select a particular Readout position, then use the RIGHT or LEFT Cursor keys to change what will be displayed at that position. (Off, Speed, Temperature, Triplog, Voltage)



**Depth Offset 0.0ft**  
(Advanced)

Depth Offset will adjust the digital depth readout to indicate depth from the waterline or boat's keel. Enter a positive vertical measurement from the transducer to the waterline to read the depth from the waterline. Enter a negative vertical measurement from the transducer to keel to read the depth from the keel. This menu choice is available only when in Advanced User Mode (see *Setup Menu Tab: User Mode*).

**To change the Depth Offset setting:**

1. Make sure you are in Advanced User Mode, then highlight Depth Offset on the Setup menu.
2. Use the LEFT or RIGHT 4-Way Cursor Control keys to change the Depth Offset setting. (-10.0 to +10.0 or -3 to 3 meters [International Models Only], Default = 0)

**Temp. Offset 0.0°**  
(Advanced)

Temp Offset will adjust the temperature readout by the amount entered. This menu choice is available only when in Advanced User Mode (see *Setup Menu Tab: User Mode*).

**To change the Temp Offset setting:**

1. Make sure you are in Advanced User Mode, then highlight Temp Offset on the Setup menu.
2. Use the LEFT or RIGHT 4-Way Cursor Control keys to change the Temp Offset setting. (-10.0 to +10.0, Default = 0)

**Speed Calibration 5%**  
(Advanced, with Temp/Speed Only)

Speed Calibration will adjust the speed readout by the percentage entered, and will only appear in the menu if a Temp/Speed Accessory is connected and the paddlewheel has moved at least once when the unit is in Advanced User Mode (see *Setup Menu Tab: User Mode*).

**To change the Speed Calibration setting:**

1. Make sure you are in Advanced User Mode, then highlight Speed Calibration on the Setup menu.
2. Use the LEFT or RIGHT 4-Way Cursor Control keys to change the Speed Calibration setting. (-20% to +20%, Default = 0%)

## Troubleshooting

Before contacting the Humminbird® Customer Resource Center, please read the following section. Taking the time to review these troubleshooting guidelines may allow you to solve a performance problem yourself, and therefore avoid sending your unit back for repair.

### FishFinder Doesn't Power Up

If your FishFinder doesn't power up, use the Installation Guide that also comes with it for specific confirmation details, making sure that:

- the power cable is properly connected to the FishFinder control head,
- the power cable is wired correctly, with red to positive battery terminal and black to negative terminal or ground
- the fuse is operational
- the battery voltage of the power connector is at least 10 Volts.

Correct any known problems, including removing corrosion from the battery terminals or wiring, or actually replacing the battery if necessary.

### FishFinder Defaults to Simulator with a Transducer Attached

A connected and functioning transducer will cause the newly-started FishFinder to go into Normal operating mode automatically. If, when you power up the FishFinder, it goes into Simulator mode automatically, even though a transducer is already connected, this means that the control head is not detecting the transducer. Perform the following troubleshooting tasks:

- Using the Installation Guide that also comes with your FishFinder, check to make sure that the transducer cable is securely connected to the FishFinder. Reconnect if necessary, and power up the FishFinder again to see if this fixes the problem.
- Replace the transducer with a known good transducer if available and power up the control head again.
- Check the transducer cable and connector. Replace the transducer if the cable is damaged or corroded.

## Display Problems

There are several main conditions or sources of possible interference that may cause problems with the quality of the information displayed on the control head. Look in the following table for some symptoms of display problems and possible solutions:

Problem	Possible Cause
The control head loses power at high speeds.	If the power output of your boat's engine is unregulated, the control head may be protecting itself using its over-voltage protection feature. Make sure the input voltage does not exceed 20 Volts.
When the boat moves at higher speeds, the bottom disappears or suddenly weakens, or the display contains gaps.	The transducer position may need to be adjusted. A mix of air and water flowing around the transducer (cavitation) may be interfering with the interpretation of sonar data. See your Installation Guide for suggestions on adjusting the transducer position.
There are no fish detected, even when you know they are in the water under the boat, or sonar readings seem weak or faulty.	Electrical noise from the boat's engine may be interfering with sonar reception. See Finding the Cause of Noise for more information.  Sonar readings may be affected if the transducer is not positioned correctly (i.e. mounted at an angle, not straight down), or there is some kind of mechanical interference, either because it is mounted inside a hull that is too thick for proper sonar transmission, the bond between the transducer and the hull is not airtight, or because the transducer is dirty. Check with your Installation Guide for guidance on re-positioning the transducer, and make sure the transducer is clean.  Low battery voltage may be affecting the power of signal transmission.  Electrical noise from the boat's engine may be interfering with sonar reception. See <b>Finding the Cause of Noise</b> for more information.

### Finding the Cause of Noise

Electrical noise usually affects the display with many black dots at high speeds, and high sensitivity readings. One or more of the following sources can cause noise or interference:

Possible Source of Noise	How to Isolate It
<b>Other electronic devices</b>	Turn off any nearby electronic devices to see if the problem goes away, then turn them on one at a time to see if the noise re-appears.
<b>The boat's engine</b>	To determine whether the boat's engine is the source of the noise, increase the RPMs while the boat is in neutral and stationary to see if the noise increases proportionately; if noise appears when you rev the engine, the problem could be the spark plugs, alternator, or tachometer wiring. Replace the spark plugs with resistor plugs, install an alternator filter, or route the control head power and transducer cables away from the engine wiring.
<b>Cavitation from the boat's propeller</b>	Turbulence created by the propeller can cause noise; make sure the transducer is mounted at least 15" (38 cm) from the propeller, and that the water flows smoothly over the face of the transducer at all times.

### Humminbird® Fishfinder Accessories

Accessories customize the Humminbird® to your needs and enable you to stay on the edge of new technology and to catch more fish. When an accessory is connected to the system, additional menus and readouts are added automatically to your Humminbird® menu system. Accessories available today that are supported by your Humminbird® include:

**Temperature/Speed:** simply plugs into the Humminbird® control head and provides real time speed and temperature readouts, as well as a valuable Triplog function.

*NOTE: If an external Temperature/Speed (TS-W) or Temperature (TG-W) accessory is connected AND a transducer with temperature built in is connected at the same time, the TS-W or TG-W accessory will override the temperature built in to the transducer.*

Be sure to check out our website [www.humminbird.com](http://www.humminbird.com) for additional new and exciting accessories to grow your Humminbird® FishFinder!

*NOTE: Accessories require a separate purchase.*

### Specifications

<b>Depth Capability</b>	1000 ft (330 m)
<b>Power Output</b>	300 Watts (RMS) 2400 Watts (Peak to Peak)
<b>Operating Frequency</b>	200 kHz Single Beam
<b>Area of Coverage</b>	20° @ -10 dB in 200 kHz
<b>Target Separation</b>	2½ Inches (63.5 mm)
<b>Power Requirement</b>	10-20 VDC
<b>LCD Matrix</b>	320 V x 240 H TFT Color
<b>Transducer</b>	XHS-9-20-T
<b>Transducer Cable Length</b>	20 ft (6 m)

*Product specifications and features are subject to change without notice.*



**Contact Humminbird®**

Contact the Humminbird® Customer Resource Center  
in any of the following ways:

By Telephone

(Monday - Friday 8:00 a.m. to 4:30 p.m. Central Standard Time):

**1-800-633-1468**

By e-mail

(typically we respond to your e-mail within three business days):

**[custserv@johnsonoutdoors.com](mailto:custserv@johnsonoutdoors.com)**

For direct shipping, our address is:

**Humminbird®  
Service Department  
678 Humminbird Lane  
Eufaula, AL 36027 USA**



**HUMMINBIRD®**