



Quick Start Guide

**HomePlug Digital
Media Streamer
DMA1100P**

PACKAGE CONTENTS



SYSTEM REQUIREMENTS

- CPU: Celeron 1.0 GHz or Pentium III 1 GHz or above
- Memory: 256Mb or more
- Network: Ethernet LAN
- If running high definition you will require a HDMI cable (not included)
- HomePlug AV compatible Adapter for networking to other HomePlug AV devices

The DMA1100P HomePlug Digital Media Streamer supports the following file formats. See the User Guide on DMA1100P CD for more details.

Audio - Dolby Digital, DVD-Audio, MPEG1 and MPEG2 Layers I, II and III MP3), MPEG2 BC multi-channel Layers I, II and III, MPEG2 and MPEG4, AAC-2, WMA9

Video - MPEG1, MPEG2 MP@ML, MPEG4 simple and advanced simple profile, MPEG4, AVI file and WMV version 9

Photo - TIFF, PNG, GIF, BMP, JPEG and JPEG2000

WINDOWS Vista User	WINDOWS XP User
Refer to the Microsoft Vista Media Server appendix in the User Guide (on the included Installation CD) for further instructions on how to set-up the DMA1100P.	Install the software from the Installation CD to install the DMA1100P.

	Microsoft Windows						MAC	LINUX
	98SE	ME	2000	XP	XP/64	Vista		
DMA1100P								

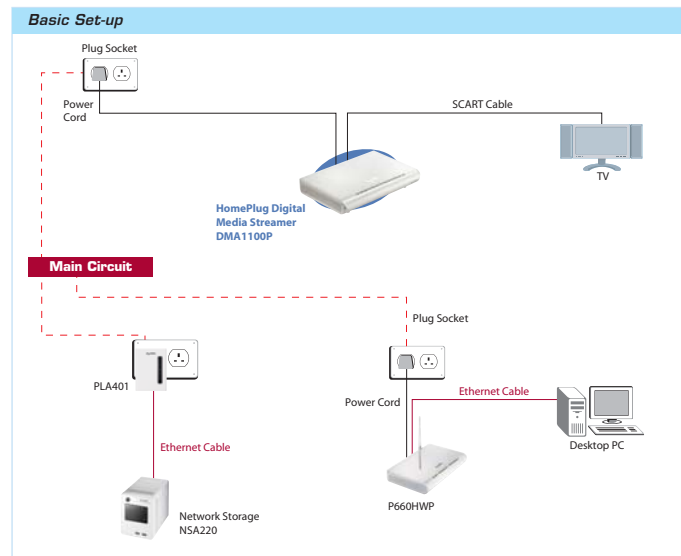
OVERVIEW

The HomePlug Digital Media Streamer provides:

- Playback of both standard and high definition movies, music and photos stored on PC and storage device to your TV.
- Support for DRM protected downloadable content from major online providers.
- Playback of music or the latest PodCasts on your computer direct to your TV or Hi-Fi.
- USB storage device playback compatibility.
- Automated detection and organisation of your media files creating an easily accessible library.
- 200Mbps HomePlug creating a home network without the cables, giving you fast, reliable and high quality playback*.

Note: *Additional HomePlug is required to create a complete network.

The following diagram shows the DMA1100P HomePlug Digital Media Streamer set-up



UK Technical & Customer Support
Email: support@zyxel.co.uk
Telephone: 0845 122 0301

STEP 1

Insert CD to install Digital Media software on your computer, follow the on screen instructions and please make sure that:

- Security software on your computer or laptop is turned OFF during the installation e.g. Firewall and AntiVirus; please remember to switch it back on following successful installation.
- All other applications are CLOSED DOWN e.g. Email, Web Browser, Word Processor.
- You have a spare Ethernet port on your computer or laptop.

STEP 2

Connecting your DMA1100P HomePlug Digital Media Streamer

- 1 Turn off your TV before connecting your DMA1100P

DMA1100P Connections



- 2 Connecting to your TV

Standard installation – for SCART Users

- a. Unpack the SCART Cable and connect the Composite Video connector (yellow) into the yellow Composite Video socket at the back of the DMA1100P.



For different type of TV or Hi-Fi connectivity, please refer to your TV or Hi-Fi manual

- b. Connect the audio cables left (red) and right (white) into the colour corresponding sockets at the back of the DMA1100P.



- c. Connect the SCART connector into an available SCART socket on the rear of your TV.

High definition installation - using a HDMI cable*

Plug in one end of the HDMI cable into the HDMI socket on the DMA1100P and the other end into an available HDMI socket on the HDTV.



**The HDMI cable is not included*



It is not recommended that you connect both a SCART cable and an HDMI cable into the same HDTV - please use one or the other.

- 3 Connect your computer or laptop

- a. There are several ways to connect to your network:

1. Using a HomePlug compatible router or adapter	2. Using a router directly connected	3. Using a computer or laptop directly for media content
The DMA1100P when powered on will automatically network using HomePlug AV via the electricity mains power socket. You must use a compatible HomePlug AV adapter or router (connected to your Computer or Storage device) to provide a HomePlug connection to stream content. No additional configuration is required.	Plug the supplied grey straight LAN cable into the LAN socket on the DMA1100P and the other end to the LAN/Ethernet port on your router.	Plug the supplied red crossover LAN cable to the LAN socket on the DMA1100P and the other end to the LAN/ Ethernet port on your computer or laptop*.

* It is not recommended for Apple products.



You will need to connect your computer (that has the digital media software installed) to the DMA1100P via one of the methods listed above.

- b. You can directly share media files via the USB 2.0 port. You can connect a USB memory stick or hard drive at any time.



The USB port is not recommended for Apple products, as this may damage the device.

- 4 Connect the power cord to the DMA1100P (see right) then connect the plug into your mains socket.



For networking via HomePlug AV, to achieve best results it is highly recommended you plug the DMA1100P mains lead direct to the power socket in the wall, not via an extension lead. The HomePlug AV connection may be sensitive to interference from additional electrical equipment via the same socket.

- 5 Ensure your DMA1100P and computer or laptop are correctly connected to the HomePlug or LAN network and your media software is installed correctly (see step 3).

- 6 Look at the DMA1100P LEDs (lights). On the front of the device, the status light (1) will become green.

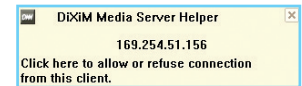


- 7 The Play light (2) will only come on when you stream media content. The LAN light (3) will come on if you have connected to any network devices e.g. computer or router. The USB light (4) will only come on when a USB device is connected. The HomePlug light (5) will also come on if you are successfully connected to another HomePlug Adapter in your home.

- 8 Look at your computer or laptop screen.

The DMA1100P HomePlug Digital Media Streamer should be automatically detected and you will see a pop-up window, containing the IP address of the DMA1100P.

- 9 Within the pop-up window, click where instructed.



You may need to wait two or three minutes before the window pops up. If the window does not appear, check the DMA1100P is turned on, cables are firmly connected and restart the DMA1100P via on/off button.

If the pop-up window still fails to appear, then refer to Section 9 in the DMA1100P user manual (located on the DMA1100P installation CD) to configure the DMA1100P and computer software manually.

- 10 Select **Allow Connection** and click **OK**.



- 11 Click **Yes** to allow the DMA1100P to stream your media files.



- 12 Install your remote control batteries.

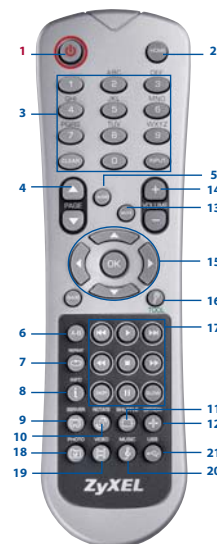


Always remember to point your DMA1100P remote control at the DMA1100P and not at the TV.

- 13** Look at your TV
- The DMA1100P automatically locates your computer and allocates a number (typically, this will be 1) in the bottom right hand corner of the TV screen (shown right).
- If you are directly connecting a USB memory device, the media files are located in the main menu - USB.
- The DMA1100P catalogues your files according to the media file type, e.g. Video, Music and Photo.
- Use the remote control to navigate through the menus and click **OK** on the remote control once you have selected your media for streaming (see right).



STEP 3 Using your Remote Control



- POWER switches between standby and on
- HOME returns you to the main menu
- Use the 0-9, CLEAR and INPUT keys to input numbers, (e.g. for individual screens or times
- PAGE up/down scroll up or down a list to the previous or next page
- AUDIO switches audio output between left, right and stereo speakers
- A-B lets you select, start and stop times to repeat an interval.
- REPEAT keeps playing the file
- INFO displays details about playing the file
- SERVER opens a menu where you select the media server you are using
- ROTATE turns a photo 90° clockwise
- SHUFFLE plays your playlist (favourites) files in a random order
- OPTION opens the menu where you configure the DMA1100P's settings
- MUTE turns off the sound
- VOLUME up/down adjusts the volume
- Use the OK, Back and arrow buttons to go through the menus and play your files
- TOOL opens the Tool menu for additional options (see the User Guide for more information)
- These buttons perform the previous, play, next, reverse, stop, fast forward, skip, pause and slow motion functions during file playback.
- Short cut keys PHOTO opens a menu of picture files to view
- VIDEO opens a menu of video files to play
- MUSIC opens a menu of music files to play
- USB opens a menu of files on your USB device

Congratulations!!

Your DMA1100P HomePlug Digital Media Streamer is now set-up with your computer or laptop to stream content direct to your TV and with additional HomePlug AV devices you are now able to stream your media all around your home.

For instructions on how to operate your DMA1100P with popular online content providers such as BBC iPlayer, Channel 4 On Demand, LoveFilm and eMusic go to www.zyxel.co.uk/stream

This image shows a single sheet of white paper with horizontal blue ruling lines. The lines are evenly spaced and run across the width of the page. There are no margins, text, or other markings on the paper.

[illegible]