

Canon

Mini DV



Precision-Engineered
Genuine Canon
Video Lens

TINY SIZE, GIANT PERFORMANCE



Actual size

Go Digital
Go Canon

ELURA 40 MC

DIGITAL VIDEO CAMCORDER

www.canondv.com



The New Standard for Compact Digital Camcorders

Wrap your hand around the new Canon Elura 40MC. One of the smallest DV camcorders in the world, the Elura 40MC packs a surprising array of high-performance features and sophisticated imaging technology inside its sleek and compact exterior. This pint-size powerhouse features a 680,000-pixel CCD for producing stunning video and crisp XGA high-resolution photos, a variety of exciting special effects, plus a full assortment of interface ports. Save your still and moving images onto the included SD Memory Card, or transfer them all to your PC via USB or DV cable. Try out the Elura 40MC, and you'll see for yourself how something so small can perform so big.

Actual size



ELURA 40MC

DV Format

Mini DV is the new preferred format for personal and broadcast-quality video, highly regarded for its high audio and image quality. With up to 500 lines of horizontal resolution and minimum color noise, Mini DV delivers a 20% clearer picture than analog camcorder formats. All this, in a handy, super-compact cassette.



Image Stabilizer

The ideal companion for the Elura 40MC's impressive zoom capability, the advanced image stabilization system instantly compensates for "camera shake" caused by unsteady hands, giving you smooth, stable pictures even for extreme close-ups, without a tripod.



Image Stabilizer OFF

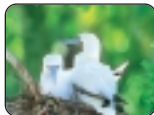
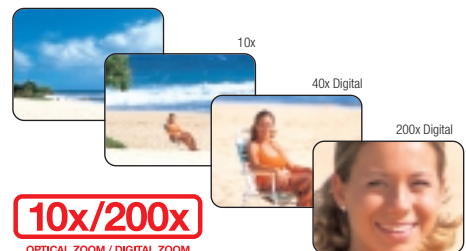


Image Stabilizer ON

**IMAGE
STABILIZER**

10x Optical Zoom Lens (40-200x Digital Zoom)

What sets a Canon camcorder apart from all the others? It's the only camcorder made by a company renowned for high-quality professional optics. Our vast expertise in designing and crafting precision lenses for 35mm and broadcast TV cameras also goes into every camcorder lens we make. The Elura 40MC's 10x optical zoom lens delivers superb definition and contrast, taking full advantage of the DV format. The digital zoom extends the camcorder's magnification from 40 to an incredible 200x, revealing details too small to see with the naked eye.



Analog Line-In

For instant editing, simply connect your TV, VCR or analog camcorder to the Elura 40MC, it will convert your analog video signal to digital, for direct transfer to your computer via IEEE1394 cable.* If you wish, you can first record the analog signal to DV tape, allowing you to create a high quality master of your original.

*The Analog to Digital Converter may not function depending on the software used.



AV Insert and Audio Dubbing

Use this function to insert new video scenes recorded in SP mode from a VCR or other another camcorder. If you've recorded your audio track in 12-bit audio mode, you can also add stereo sound from another audio source, or through the camcorder's internal microphone or an external microphone.



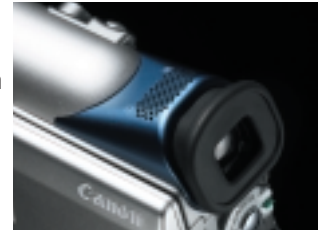
Lithium Ion Power

The Elura 40MC's Lithium Ion battery pack can be recharged at any time, so you will never be caught unexpectedly without power when the important shooting opportunities arise.



PCM Digital Sound

The Elura 40MC offers two digital audio modes, 12 and 16-bit. You can select 16-bit mode for high-quality, CD-equivalent stereo sound, or 12-bit to record only two of four channels, leaving the remaining two channels free for you to record additional sound later.



**PCM
STEREO**

Exif Print

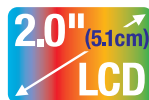
The Elura 40MC supports Exif Print (2.2), the world-wide standard for enhancing communication between camcorders and printers. After connecting to an Exif Print-compliant printer, Exif Print uses and optimizes the camcorder's image data at the moment of shooting, resulting in high quality printed photos.

Direct Print with Card Photo Printer CP-10 (optional)

Compact and fun to use, the Card Photo Printer CP-10 produces high-resolution 300 x 300 dpi dye-sublimated prints using only your Elura 40MC: no computer required! A single cable connects the printer to your Elura 40MC, and you can perform cropping and other functions right from the camera. Credit card-sized prints are perfect for storing, sharing and carrying with you. Select bordered or borderless prints, full-size labels, or even a sheet of eight mini-labels.

Flexible LCD View Screen and Color Viewfinder

The Elura 40MC's bright 2.0" LCD view screen that makes it easy to compose sensational shots without having to squint into the viewfinder. You can rotate the screen for high-or low-angle shots, or turn it around 180° to record yourself. When you're done shooting, the screen is perfect for reviewing your scenes. When scooting conditions are too bright for the LCD, the screen tucks neatly away, and you can go on shooting using the full-color eyecup viewfinder.



Manual Controls

The fully-automatic Elura 40MC gives great results even in the hands of a novice, while experts will appreciate the manual focus, exposure, white balance and shutter speed controls.



AE Shift

This function lets you control how dark or light the camcorder sets the Auto Exposure level.

Program Auto Exposure

While the Elura 40MC's Easy Recording mode is fine for most shooting situations, the camcorder also includes seven additional pre-programmed auto exposure modes (Auto, Sports, Portrait, Spotlight, Sand & Snow, Low Light and Night) each carefully designed to give you the best possible image results under special shooting conditions.



Night Mode

Even when the light has faded, you can keep on shooting with the Elura 40MC's Night Mode. The camcorder selects the optimal shutter speed based on the brightness of the subject, allowing improved brightness and color. Now you can capture the action without turning the lights on.



Stitch Assist

With the included Stitch Assist software application you can use the Elura 40MC to create magnificent 360° panoramas. Just shoot your panoramic landscape from all angles (eight shots is usually sufficient for a full 360° view), and transfer them to your computer. Then simply select and arrange your images in the correct order, and Stitch Assist does the rest, aligning, overlapping and cropping the separate images to form one continuous loop.



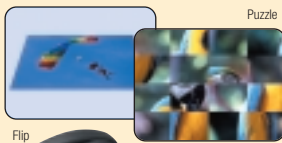
Digital Effects

The Elura 40MC features an impressive array of special digital image effects to add to your video recordings, for variety and impact at the touch of a button.



Faders

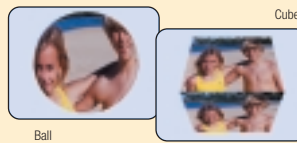
Add a variety of transitions to your movies with a fade to or from black. Choose from Fade Trigger, Wipe, Corner, Jump, Flip, Puzzle, Zigzag, Beam and Tide.



Special Effects

Add interest and variety to your images during recording and playback with Art, Black & White, Sepia, Mosaic, Ball, Cube, Wave, Color Mask or Mirror.

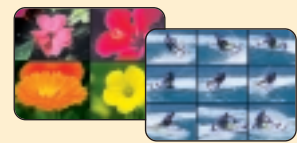
* In Card mode: Only black and white is available.



Multi-image Screen

Divide your screen into four, nine or sixteen pictures with the Image Capture function.

You can choose the speed at which the images are captured: Manual, Slow, Moderate or Fast.



- Microphone Terminal
- Built-in Speaker
- Photo Search/Date Search
- Time Code/Date Code
- 16:9 Wide Screen Mode
- Composite and S-Video Input/Output
- Self-Timer
- Confirming/Warning Beeps
- Zero Set Memory
- Record Search & Review
- LANC Terminal*

* Connect only equipment bearing the LANC symbol.



XGA High Resolution Photos

Using advanced dual image processing the Elura 40MC captures beautiful, high-definition photos. Just press the photo button to capture up to 40 stunning XGA (1024 x 768 pixel) images onto the included 8MB SD Memory card.



XGA
High Resolution
Photos

Digital Photo Mode

Not only is the Elura 40MC an outstanding video camcorder, with digital photo mode it becomes a digital still camera as well. Capture more than 700 crisp VGA (640 x 480 pixel) still images on a single videocassette (in SP mode). Combine video and still pictures together with the added benefit of audio. The Elura 40MC can also capture approximately 90 VGA (640 x 480 pixel) pictures onto an 8MB SD Card.



SD Memory Card and MultiMediaCard*

The Elura 40MC expands video possibilities with a built-in slot for an SD (Secure Digital) Memory Card or a MultiMediaCard, in addition to a Mini DV cassette. These ultra-small and ultra-light digital memory cards can record, store and manage still images and small video clips. Easily transfer still images and movie clips to your PC directly from the camcorder. Copy still images from videocassette to memory card, and vice versa. Produce effects not possible with just a cassette using one of three types of Card Mix Effects. Choose one of the sample images provided on the supplied SD Memory Card (such as picture frame or crashing waves) then combine it with the live video recording.

*An 8MB SD Memory Card is supplied with the camcorder.



MultiMediaCard



IEEE 1394 DV Terminal

An IEEE 1394-compliant DV terminal lets you connect the Elura 40MC to a DV-compatible computer or another Canon DV camcorder. Transfer your digital movies to your computer's hard disk, edit your scenes, then use them to create high-impact Web sites, video email, interactive CDs and DVDs, or a personal video album.



USB Terminal

Allows high-speed transfer of photos and movie clips from your SD Memory Card or MultiMediaCard to your computer. By using the USB cable and software provided, you can process and organize your images and video on your PC.

*System requirements: Interface: USB: only preinstalled Windows 98/Windows Me/Windows 2000/Windows XP systems with built-in USB ports, or only systems equipped with genuine Apple-brand built-in USB interfaces.



Included Software

The Elura 40MC kit includes the Digital Video Solution Disk, with a suite of helpful software for image management and editing, including:

ZoomBrowser EX (Windows) and **ImageBrowser** (Macintosh) let you easily download, browse, archive and retouch your still images. Automatically resize images and attach them to e-mail, arrange them for printing, and add text anywhere on the page. **Arcsoft PhotoImpression** lets you easily convert still images to sepia color, apply other special effects, edit them or use them to create attractive greeting cards and calendars. **Arcsoft VideoImpression** gives you an array of easy-to use tools for editing and applying special effects to movies, or attaching them to your e-mail.

Motion JPEG

The Elura 40MC lets your record short movie clips in Motion JPEG format onto the inserted memory card, for clear images and smooth playback. You may choose to record up to 10 seconds at 320 X 240 pixels or up to 30 seconds at 160 X 120 pixels.



Accessories

Power Sources

Maximum recording time

Battery pack	Max. Recording Time		Typical Recording Time*	
	Using the Viewfinder	Using the LCD Screen	Using the Viewfinder	Using the LCD Screen
NB-2L	1hr. 15 min.	55 min.	35 min.	30 min.
BP-2L12	2hr. 40 min.	2hr.	80 min.	1hr. 5min.

*Typical Recording Time: Approximate times for recording with repeated operations such as start/stop, zooming and power on/off. Actual time may vary.

Lithium Ion Battery Packs

NB-2L

BP-2L12



Car Battery Charger

CBC-NB2

Use this handy charger to charge NB-2L/BP-2L12 batteries from your car's cigarette lighter socket.

Carrying Accessories

Genuine Leather



Soft Carrying Case
SC-1000



Soft Carrying Case
SC-A50

Canon Digital Video Cassettes



Digital Video Cassette
DVM-E60/DVM-E80



Digital Video Head
Cleaning Cassette
DVM-CL

Creative Shooting Accessories



Wide-converter

WD-28

Gives wide-angle coverage at 0.7x



Tele-converter

TL-28

Increases focal length 1.7Zx



Filter Set

FS-28U

Includes neutral density (ND 8) filter and MC protector.



Battery Video Light

VL-10LI

Powerful 10W illumination. A BP-900 series battery attaches directly, for cable-free operation. (Optional BP-900 Series battery and charger required)



Zoom Remote Controller

ZR-1000

Plug into the Elura 40MC's LANC terminal for control of record start and stop, zoom, focus and other functions while the camcorder is mounted on a tripod, without having to touch the camcorder itself.



Adapter Bracket

SA-1

This handy bracket lets you attach an external microphone or VL-10LI video light.



This mark identifies genuine Canon video accessories. When you use Canon video equipment, we recommend Canon-brand accessories or products bearing the same mark.

Availability may vary by area.

Specifications

Power supply (rated)	7.4V DC
Power consumption (while recording with the AF turned on)	3.4W (Using viewfinder); 4.4W (Using LCD screen)
Television system	EIA standard (525 lines, 60 fields) NTSC color signal
Video recording system	2 rotary heads, helical scanning DV system (Consumer digital VCR SD system) Digital component recording
Audio recording system	PCM digital sound: 16 bit (48 kHz/2 ch); 12 bit (32 kHz/4 ch); 1/8 inch CCD (charge coupled device), approx 680,000 pixels (card: 630,000 effective pixels, tape: 340,000 effective pixels)
Image sensor	1/8 inch CCD (charge coupled device), approx 680,000 pixels (card: 630,000 effective pixels, tape: 340,000 effective pixels)
Tape format	Video cassettes bearing the "iV" mark.
Tape speed	SP: 3/4 ips (18.81 mm/s), LP: 1/2 ips (12.56 mm/s)
Maximum recording time (with an 80 min. cassette)	SP: 80 min., LP: 120 min.
Fast forward/rewind time	Approx. 2 min. 20 sec. (with a 60 min. cassette)
Lens	F1.8-2.3, 10x power zoom, f=2.5-25 mm (7x power zoom, 3.5-25 mm in CARD CAMERA mode)
Focusing system	TTL autofocus, manual focusing possible
Minimum focusing distance	3 ft 3 3/8 inch (1 m), (1/2 inch (1 cm) on maximum wide angle)
Maximum shutter speed	1/2,000 sec. (1/250 sec. when using a memory card)
Minimum illumination	2.4 lx (using the Night program in TAPE CAMERA mode)
Recommended illumination	More than 100 lx
Filter diameter	28 mm
Viewfinder	0.5 inch, TFT color LCD, approx. 113,000 pixels
LCD screen	2 inch, TFT color, approx. 130,000 pixels
Microphone	Stereo electret condenser Microphone
Memory Card	
Recording media	SD Memory Card, MultiMediaCard
Number of recording pixels	Still image: 1024 x 768 pixels, 640 x 480 pixels Movie: 320 x 240 pixels (approx. 10 sec.), 160 x 120 pixels (approx./ 30 sec.) *The figures in brackets represent the maximum length of one movie clip.
Image format	Design rule for Camera File system (DCF), Exif 2.2 compliant, Digital Print Order Format (DPOF) compliant (only images marked for printing)
File format	Still image: JPEG (compression mode: Superfine/Fine/ Standard); Movie: Motion JPEG
Estimated SD Memory Card SDC-8M capacities*	1024 x 768: Superfine 14 images/Fine 20 images/Standard 39 images, 640 x 480: Superfine 35 images/Fine 52 images/ Standard 86 images *The actual number varies depending on the images. Sample images recorded on the supplied SD Memory Card are to be included in the total number.
USB terminal (USB 2.0 compliant)	mini-B
DV terminal input/output	Special 4-pin connector (conforms to IEEE 1394)
A/V terminal input/output	ø3.5 mm minijack Audio input: -10 dBV/at least 40 kohms, unbalanced output: -10 dBV (47 kohm load)/ less than 3 kohms, unbalanced Video: 1 Vp-p/75 ohms unbalanced
S-video terminal input/output	1 Vp-p (Y signal), 0.286 Vp-p (C signal)
Operating temperature range	32-104°F (0-40° C)
Dimensions	2 x 4 1/8 x 3 1/2 inch (55 x 111 x 89 mm)
Weight	13 3/8 oz (380 g)

System requirements:

Interface: USB: only preinstalled Windows 98/Windows Me/Windows 2000/Windows XP systems with built-in USB ports, or only systems equipped with genuine Apple-brand built-in USB interfaces.

Operating System	CPU	RAM
Windows	Windows 98	150Hz or better
	Windows Me/ Windows 2000	300Hz or better
	Windows XP	300Hz or better
Macintosh	Mac OS 8.6-9.2	PowerPC
	Mac OS X (10.1)	

Operating System	Free hard disk space	
Windows	ZoomBrowserEX	120MB or more
	PhotoStitch	40MB or more
	USB TWAIN Driver	25MB or more
	USB WIA Driver	
	Arcsoft Photo Impression	125MB or more
	Arcsoft Video Impression	30MB or more
Macintosh	ImageBrowser	120MB or more
	PhotoStitch	40MB or more
	Arcsoft PhotoImpression	120MB or more
	Arcsoft VideoImpression	30MB or more

THE CANON Elura 40MC KIT

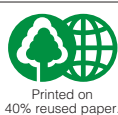
- Elura 40 MC
- NB-2L Battery Pack
- CB-2LT Battery Charger
- CA-PS700 Compact Power Adapter
- Wireless Controller WL-D77
- S-150 S-video Cable
- STV-250N Stereo Video Cable
- SDC-8M SD Memory Card
- Software/USB Cable



www.canondv.com

Canon

U.S.A.	CANON U.S.A. INC. Consumer Information Center toll-free at 1-800-828-4040 (in U.S.A.) One Canon Plaza, Lake Success, NY 11042 USA
CANADA	CANON CANADA INC. Consumer Information Center toll-free at 1-800-828-4040 (in Canada) 6390 Dixie Road, Mississauga, Ontario L5T 1P7
MEXICO	CANON MEXICANA, S. DE R. L. DE C. V. Periferico Sur No.4124 Col. Ex-Rancho de Anzaldedo C.P. 01900 Mexico, D.F.
CENTRO Y SURAMERICA	CANON LATIN AMERICA, INC. 703 Waterford Way Suite 400 Miami FL 33126 USA
ASIA	CANON HONGKONG COMPANY LTD. 9/F, The Hong Kong Club Building, 3A Chater Road, Central, Hong Kong



Printed on 40% reused paper.

Pictures simulated. Errors and omissions excepted. Weight and dimensions are approximate. Subject to change without notice.

•Macintosh and QuickTime are trademarks of Apple Computer Inc., registered in the United States and other countries. •Microsoft and Windows are either registered trademarks or trademarks of Microsoft Corporation in the United States and/or other countries. •Other names and products not mentioned above may be registered trademarks or trademarks of their respective companies. •SD Logo is a trademark. •Canon is a trademark of Canon Inc.

Warning: Unauthorized recording of copyrighted materials may infringe on the rights of copyright owners and be contrary to copyright laws.