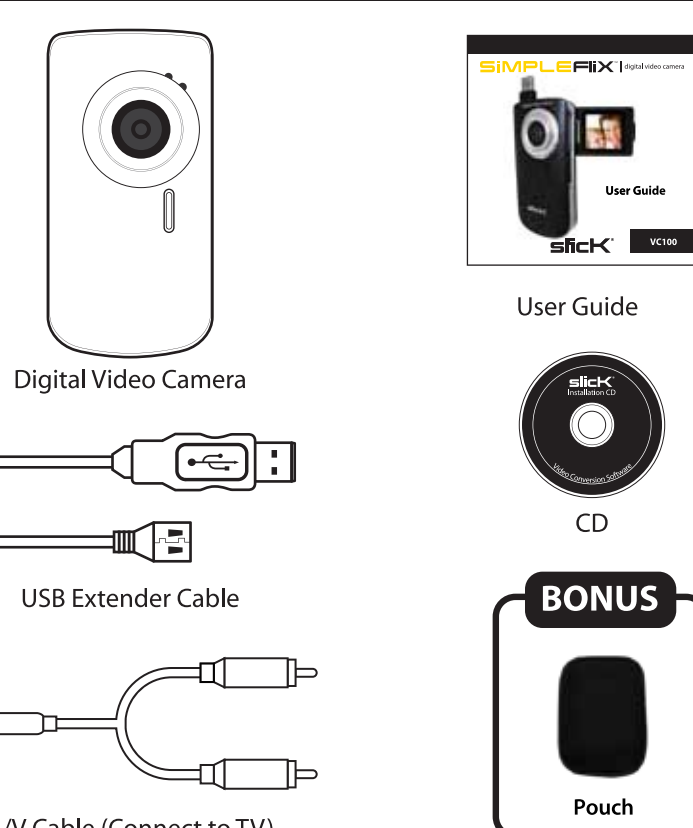


VC100: User Guide

In the box

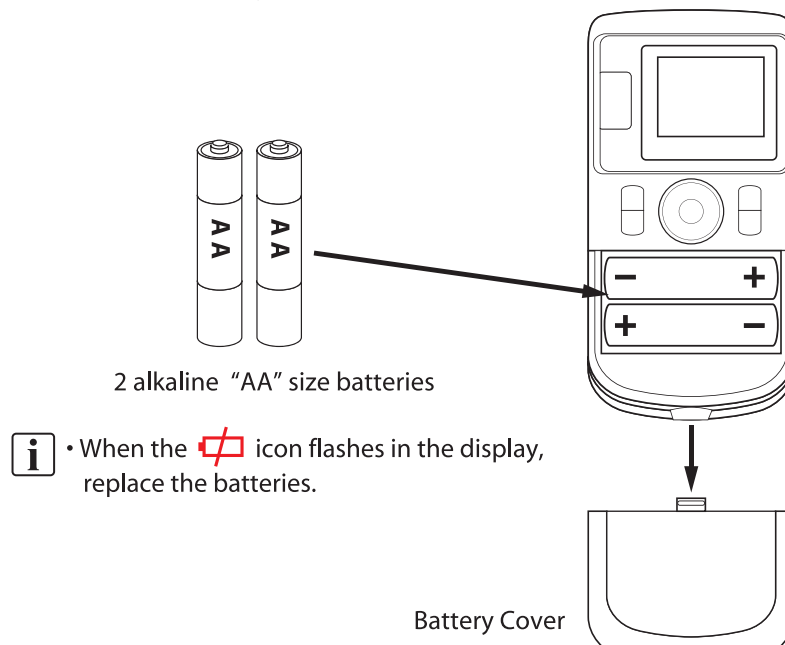
SIMPLEFIX digital video camera



Setting up your camera

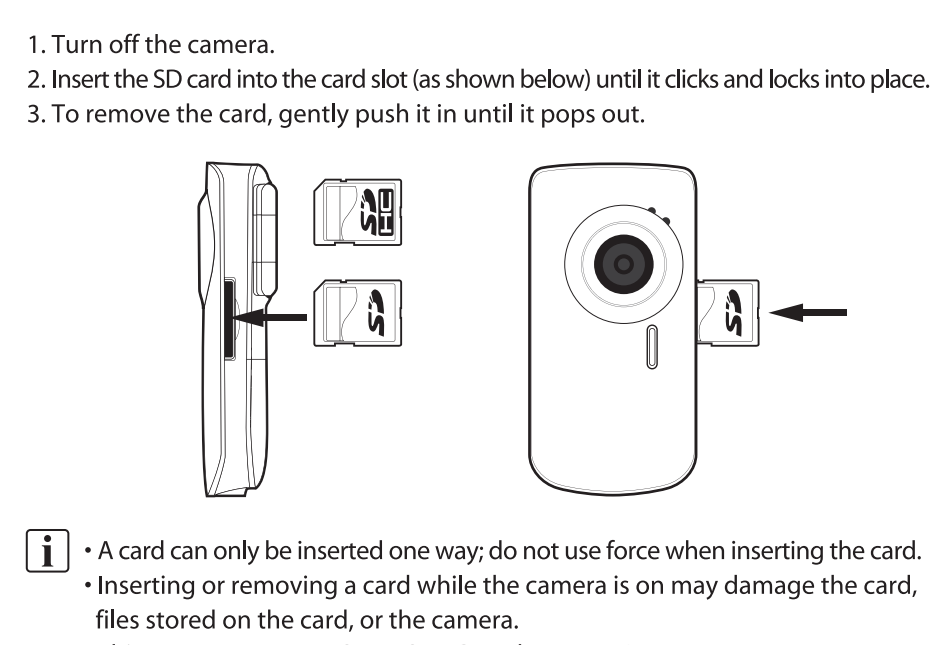
Battery Installation

1. Turn off the camera.
2. Insert 2 alkaline "AA" size batteries (not included) into the compartment.
3. Replace the battery cover.



SD card Installation

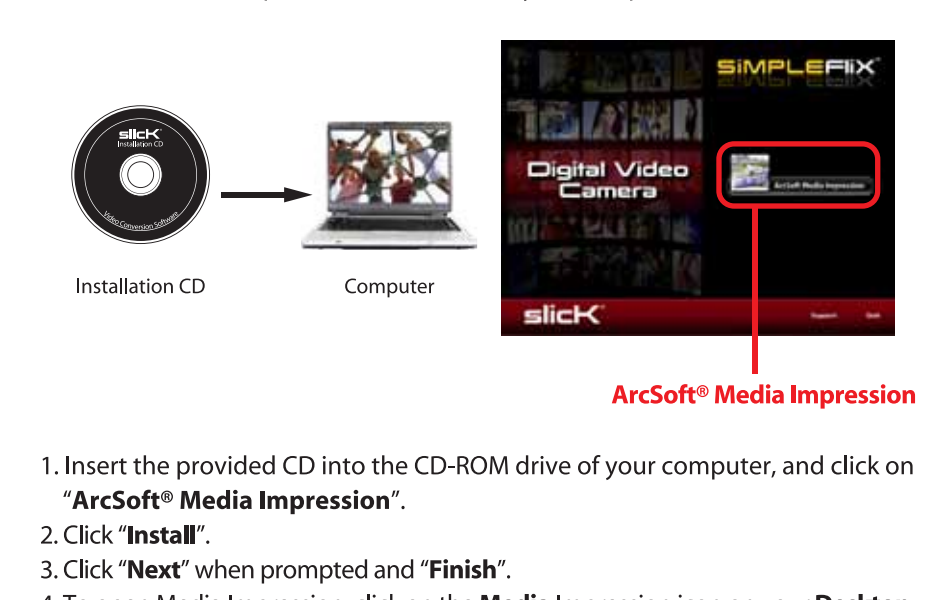
This camera has no internal memory and requires an SD / SDHC card (not included) to record videos or take pictures. The camera can support SD / SDHC cards up to 4 GB. To install the SD card into the camera, follow the steps below:



ArcSoft® Media Impression

Installing

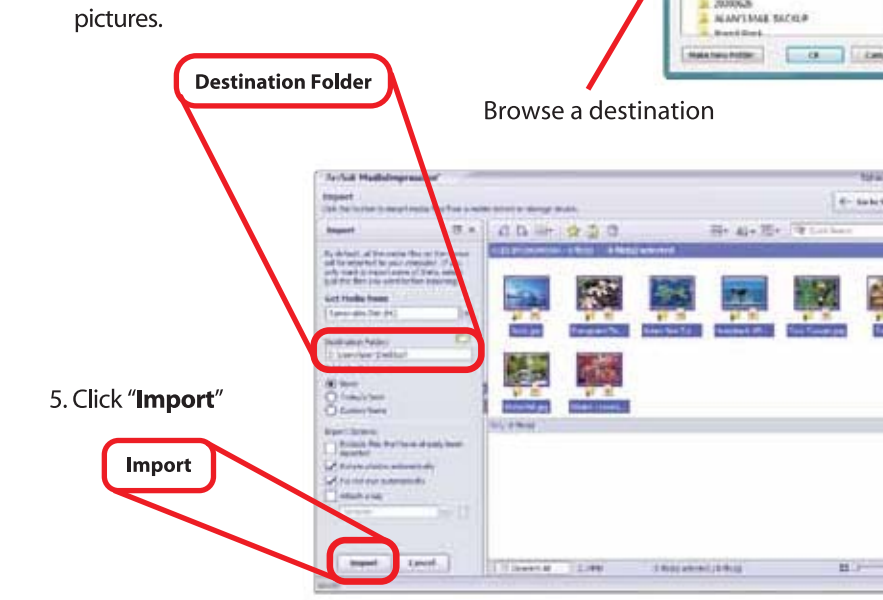
Install the included ArcSoft® Media Impression software before connecting the camera to your computer. With this software you will be able to manage, view, edit, transfer, and easily upload / share your videos and pictures. Follow the instructions below to install the Media Impression software onto your computer.



Transferring videos and pictures from the camera to your computer



4. Select a destination on your computer where you would like to transfer the videos or pictures by clicking on the "Destination Folder" drop-down window. We recommend transferring the files to either your computer's Desktop, or the "My Videos" or "My Pictures" folders, where you can easily access and find your videos and pictures.



6. If you wish to delete the original files from the camera select "Delete Original Files", otherwise just click "Done".



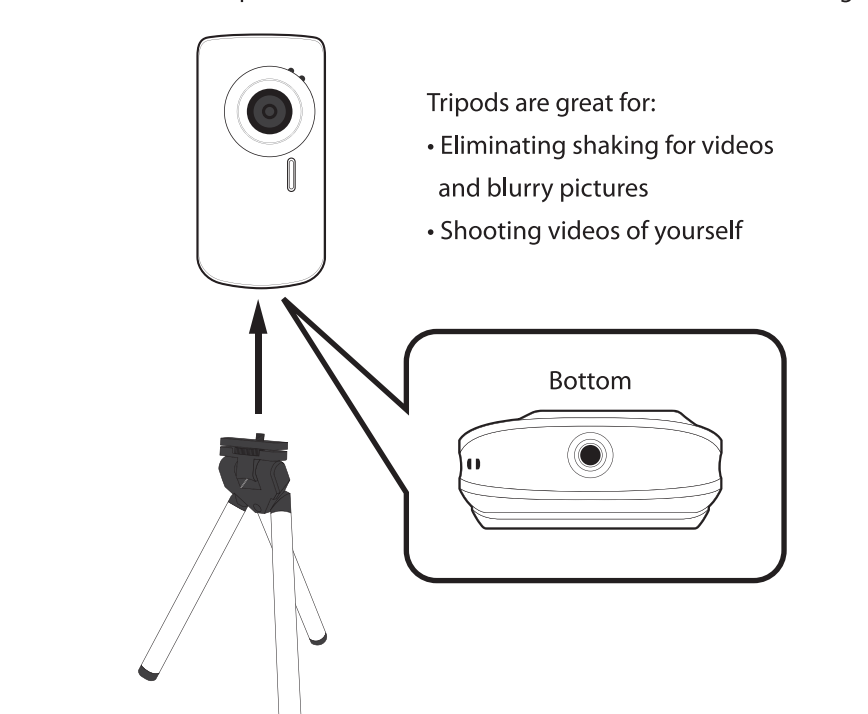
Viewing videos on your computer



Locations of controls

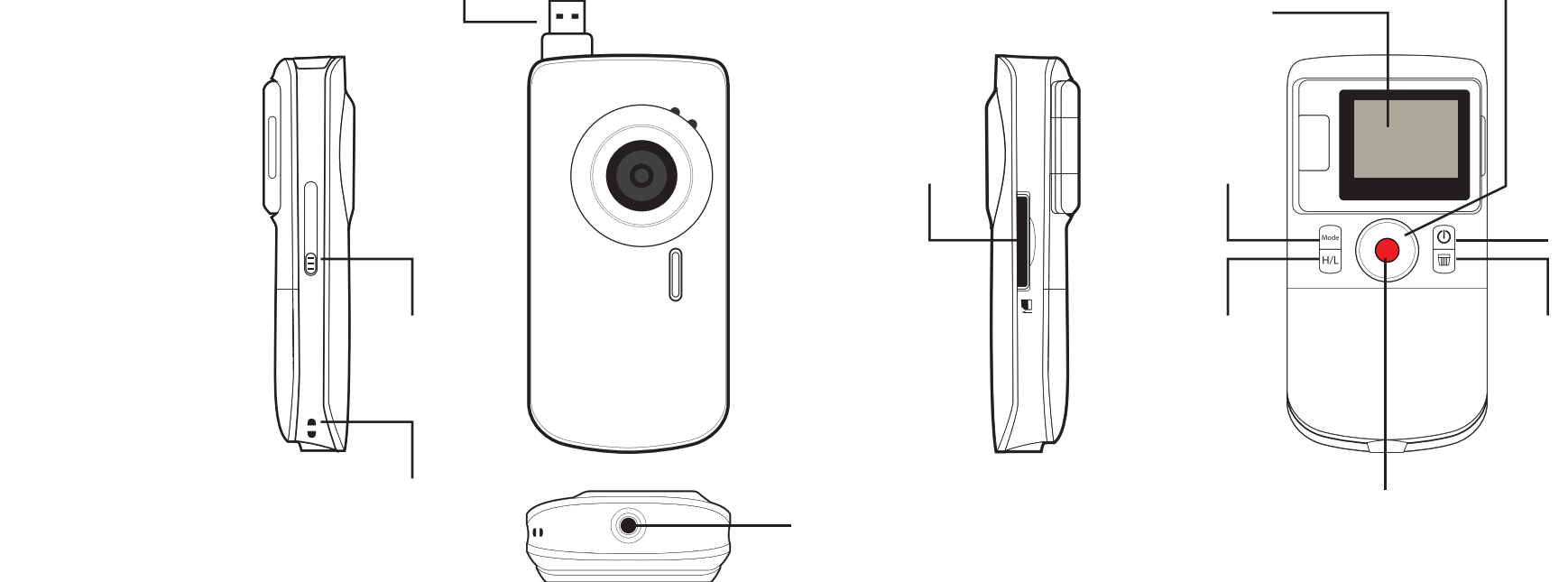
Connecting a tripod

Screw in and secure a tripod to the bottom of the video camera as shown in the diagram.



Turning the camera ON/OFF

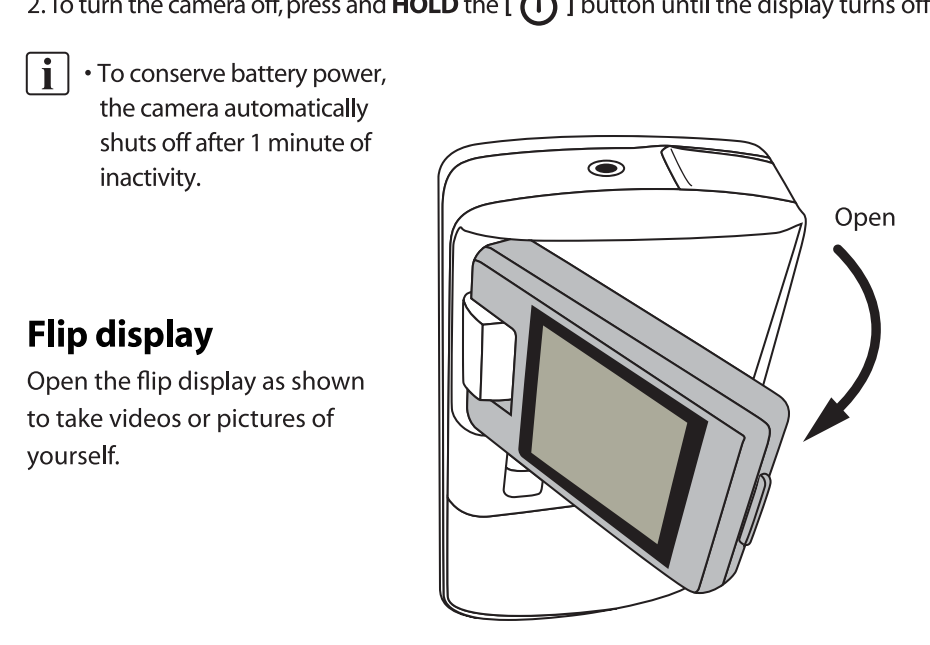
1. To turn on the camera, press and HOLD the [] button until the display turns on.
2. To turn the camera off, press and HOLD the [] button until the display turns off.



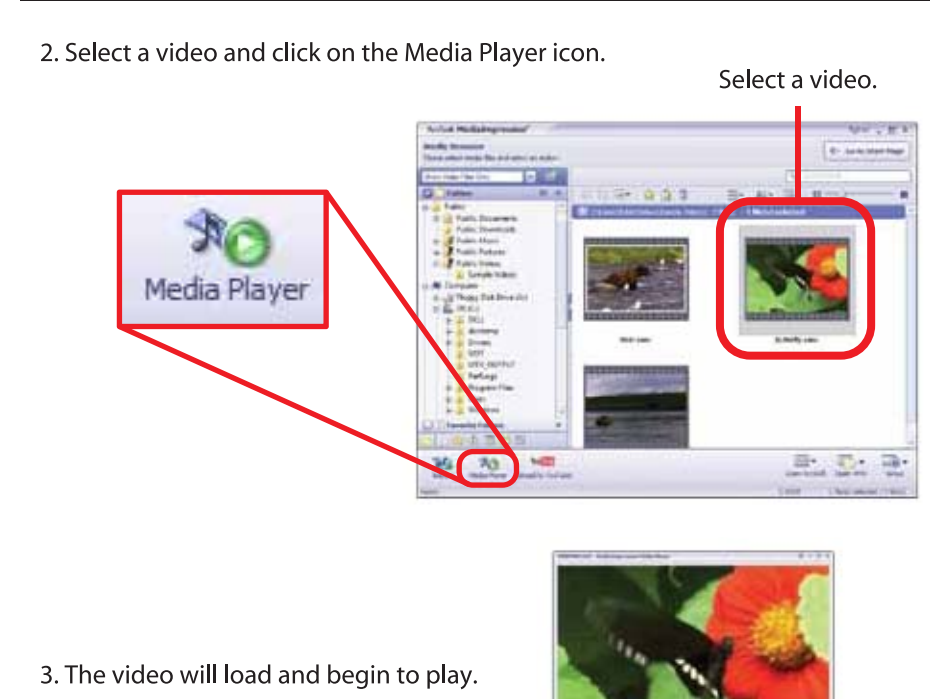
Using your camera

Flipping the display

Open the flip display as shown to take videos or pictures of yourself.



Uploading videos to YouTube™



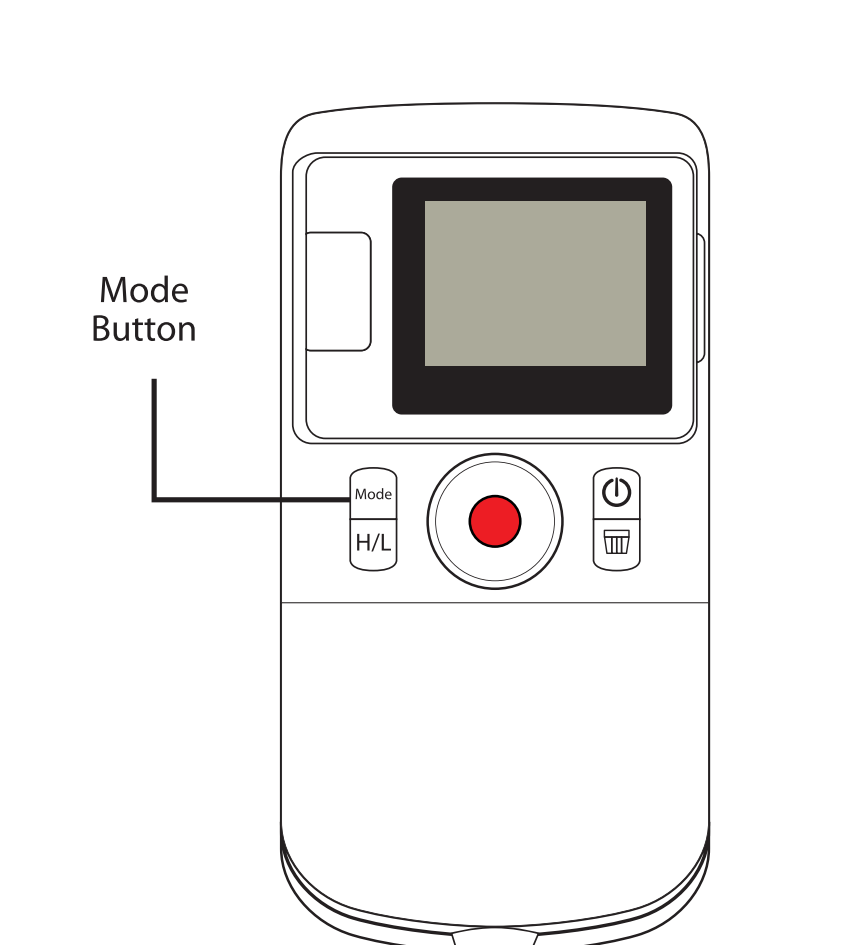
Viewing pictures on your computer



Camera modes

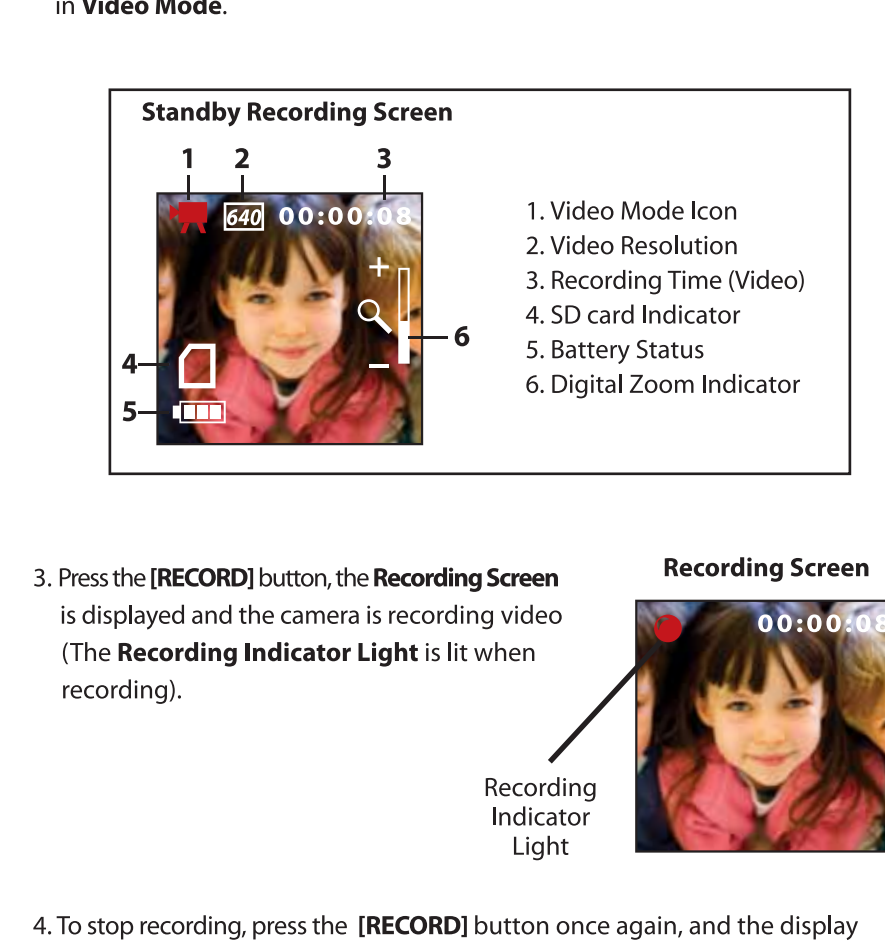
Video Mode

When you turn on the camera, the default mode is Video Mode. To scroll through and select one of the three camera modes below, press the [MODE] button until the desired mode is displayed.



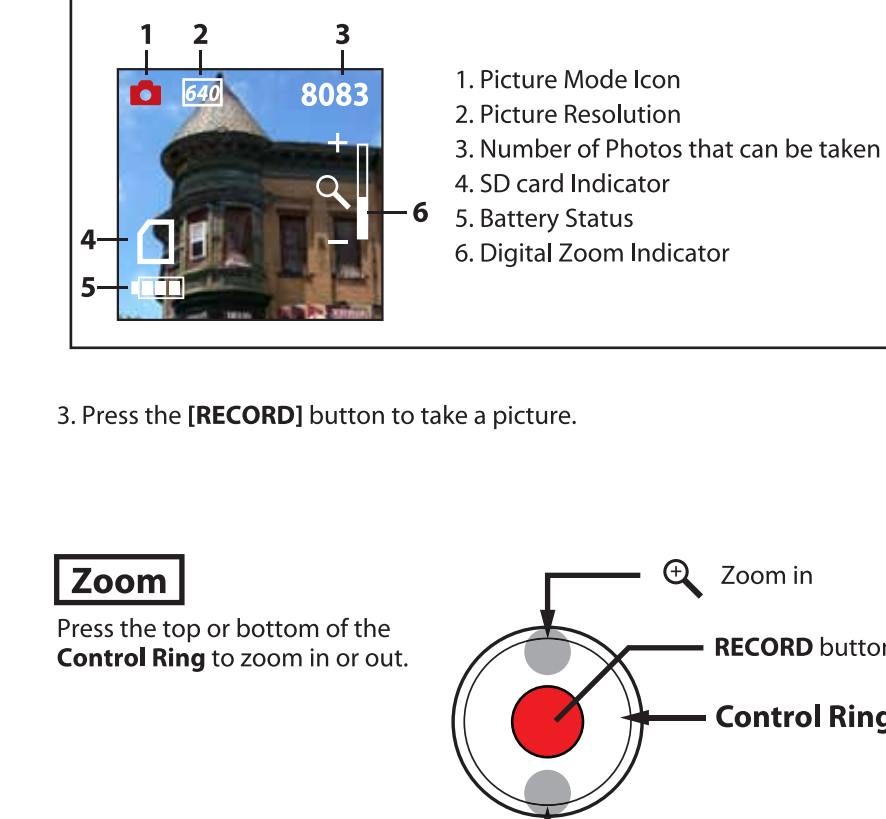
Picture Mode

1. Make sure that an SD card is inserted into the camera.
2. Turn on the camera, the Standby Recording Screen is displayed and camera is in Video Mode.



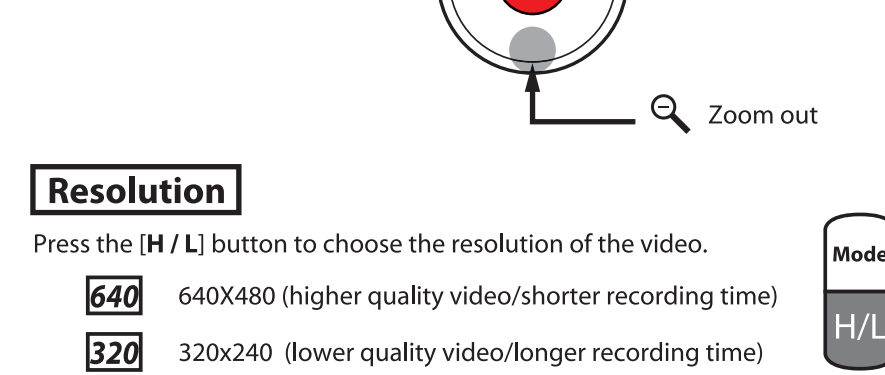
Playback Mode

1. Turn on the camera, and press the [MODE] button twice to enter the Playback Mode (Make sure an SD card is inserted into the camera).
2. Press the left or right side of the Control Ring to select a video or picture, or press the bottom of the Control Ring for a thumbnail view of your pictures and videos.
3. If you select a video, press the [RECORD] button to start or stop the playback.
4. Press the [MODE] button to return to the Video Mode or Picture Mode.



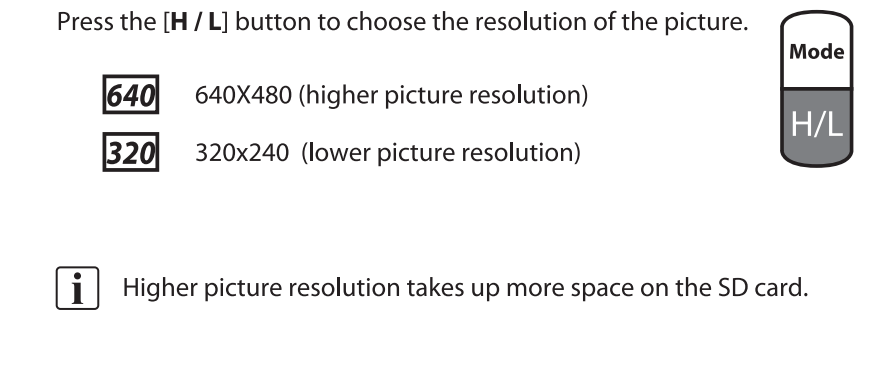
Zoom

Press the top or bottom of the Control Ring to zoom in or out.



Resolution

Press the [H / L] button to choose the resolution of the picture.



Delete

To delete a video or picture directly from your camera, follow the steps below:

1. Within the Playback Mode select the video or picture you would like to delete using the left or right side of the Control Ring.
2. Press the [Delete] button once, and the camera will respond "Delete Current" or press the [Delete] button once again and the camera will respond "Delete All!".
3. Press the [Record] button to confirm and delete the current or all files on the camera.

Troubleshooting

Camera will not turn on

- Check that the batteries are properly inserted.
- Try replacing the batteries.

The display does not light up, or the message "No Card!" is displayed

- Check that the SD card is properly inserted into the card slot.

The camera can not be directly connected to my computer's USB port

- Use the included USB Extender Cable to connect to hard to reach USB ports.

My videos / pictures are fuzzy or poor quality

- Try adjusting the resolution using the H / L button. Remember that choosing higher quality setting will take up more space on the memory card.
- Make sure to keep the camera steady when filming, and be aware of the lighting environment (the more light the better your pictures and videos will turn out).
- Avoid using the zoom too much, as it will affect the quality of your video and pictures.
- Clean the lens of your camera, and make sure it is free of fingerprints (Clean only with a non abrasive dry cloth and make sure the player is turned off before cleaning).

My videos are jumpy or shaky

- Try using a tripod.
- Adjust the video / picture quality to a higher setting.

Safety Precautions

Limited Warranty

In the unlikely event that this product is defective, or does not perform properly, you may within 90 days from your original date of purchase return it to the authorized service center for repair or exchange.

Important Battery Precautions

- Use only the type of battery specified in this user manual.
- Batteries may present a risk of fire, explosion, or chemical burn if abused. Do not try to charge a battery that is not intended to be recharged.
- Do not dispose of the battery (ies) in a fire. They may explode. Check with local codes for disposal instructions.
- Non-rechargeable batteries, such as alkaline batteries, may leak if left in your product for a long period of time. Remove the batteries from the product if you are not going to use it for a month or longer.
- If your product uses more than one battery, do not mix different types of batteries. Make sure you replace the old with all new batteries. Mixing different types of batteries or inserting them incorrectly, may cause them to leak.
- In the event that the battery is leaking, do not handle the device with your bare hands. Contact the service center for help since the liquid may remain in the player if your body or clothes had contact with the battery liquid, wash it off thoroughly with water. Also, if some liquid gets into your eyes, do not rub your eyes but immediately wash them with clean water and consult a doctor.
- Please help to protect the environment by recycling or disposing of batteries according to federal, state, and local regulations.

FCC information

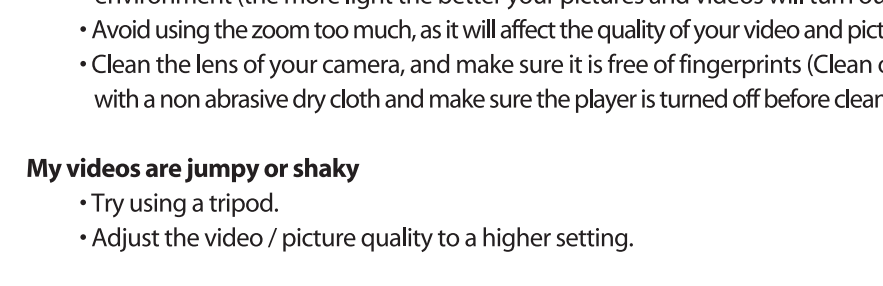
FCC Part 15

This equipment has been tested and found to comply with the requirements for a Class B digital device under Part 15 of the Federal Communications Commission (FCC) rules. These requirements are intended to provide reasonable protection against harmful interference in a residential installation. This equipment generates, uses and can radiate radio frequency energy and, if not installed and used in accordance with the instructions, may cause harmful interference to radio communications. However, there is no guarantee that interference will not occur in a particular installation. If this equipment does cause harmful interference to radio or television reception, which can be determined by turning the equipment off and on, the user is encouraged to try to correct the interference by one or more of the following measures:

- Re-orient or relocate the receiving antenna.
- Increase the separation between the equipment and receiver.
- Connect the equipment into an outlet on a circuit different from that to which the receiver is connected.
- Consult the dealer or an experienced radio/TV technician for help.

Do not attempt to repair or modify this equipment.

Warning: Changes or modifications to this equipment not expressly approved by the party responsible for compliance could void the user's authority to operate the equipment.



Warranty information

Warranty service not provided

This warranty does not cover damage resulting from accident, misuse, abuse, improper installation or operation, lack of reasonable care, and unauthorized modification. This warranty is voided in the event any unauthorized person opens, alters or repairs this product. All products being returned to the authorized service center for repair must be suitably packaged.

Limitation of Warranty:

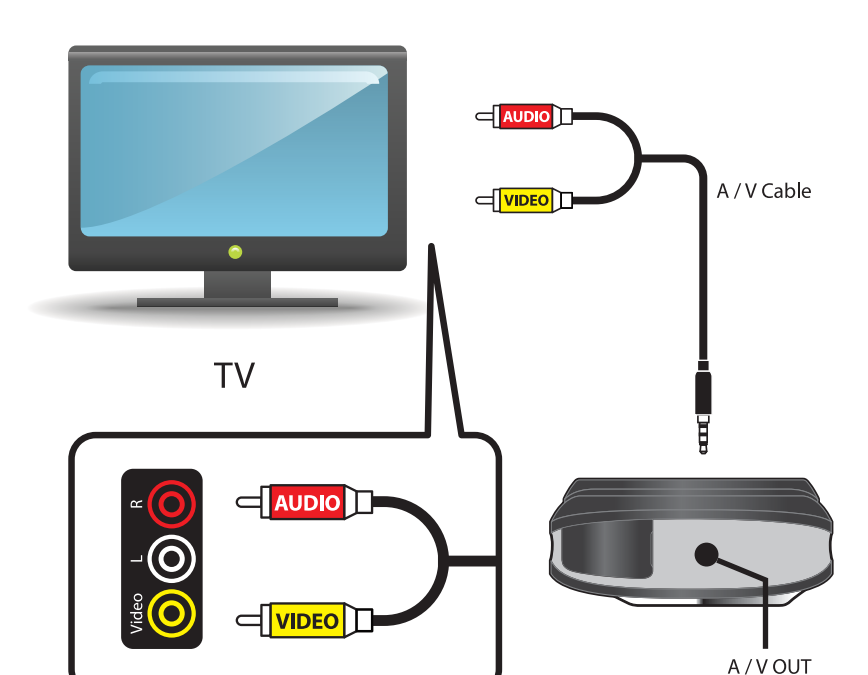
- THE WARRANTY STATED ABOVE IS THE ONLY WARRANTY APPLICABLE TO THIS PRODUCT. ALL OTHER WARRANTIES, EXPRESS OR IMPLIED (INCLUDING ALL IMPLIED WARRANTIES OF MERCHANTABILITY OR FITNESS FOR A PARTICULAR PURPOSE) ARE HEREBY DISCLAIMED. NO VERBAL OR WRITTEN INFORMATION GIVEN BY SOUTHERN TELECOM INC. ITS AGENTS, OR EMPLOYEES SHALL CREATE A WARRANTY OR IN ANY WAY INCREASE THE SCOPE OF THIS WARRANTY.
- REPAIR OR REPLACEMENT AS PROVIDED UNDER THIS WARRANTY IS THE EXCLUSIVE REMEDY OF THE CONSUMER. SOUTHERN TELECOM INC. SHALL NOT BE LIABLE FOR INCIDENTAL OR CONSEQUENTIAL DAMAGES RESULTING FROM THE USE OF THIS PRODUCT OR ARISING OUT OF ANY BREACH OF ANY EXPRESS OR IMPLIED WARRANTY ON THIS PRODUCT. THIS DISCLAIMER OF WARRANTIES AND LIMITED WARRANTY ARE GOVERNED BY THE LAWS OF THE STATE OF NEW YORK, EXCEPT TO THE EXTENT PROHIBITED BY APPLICABLE LAW. ANY IMPLIED WARRANTY OF MERCHANTABILITY OR FITNESS FOR A PARTICULAR PURPOSE ON THIS PRODUCT IS LIMITED TO THE APPLICABLE WARRANTY PERIOD SET FORTH ABOVE.

Some states do not allow the exclusion nor limitation of incidental or consequential damages, or limitations on how long an implied warranty lasts so the above limitations or exclusions may not apply to you. This warranty gives you specific legal rights, and you also may have other rights that vary from state to state.

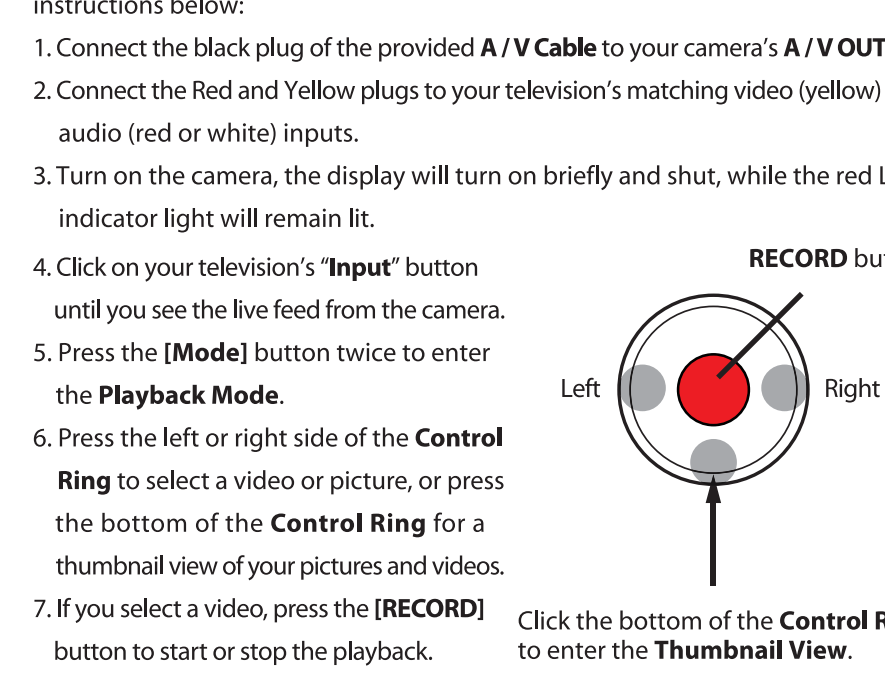


Connecting the camera

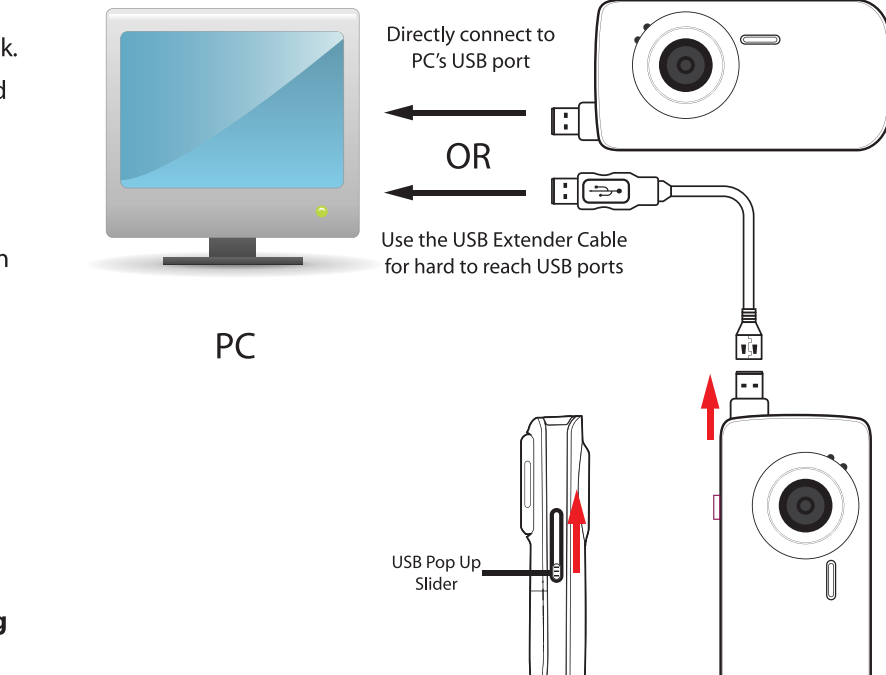
Connecting your camera to a TV



Connect your camera to a computer



Connecting your camera to a computer



Connecting your camera to a computer

