

# HD Digital Video Camera



User Guide  
VC125

slick

## In the box

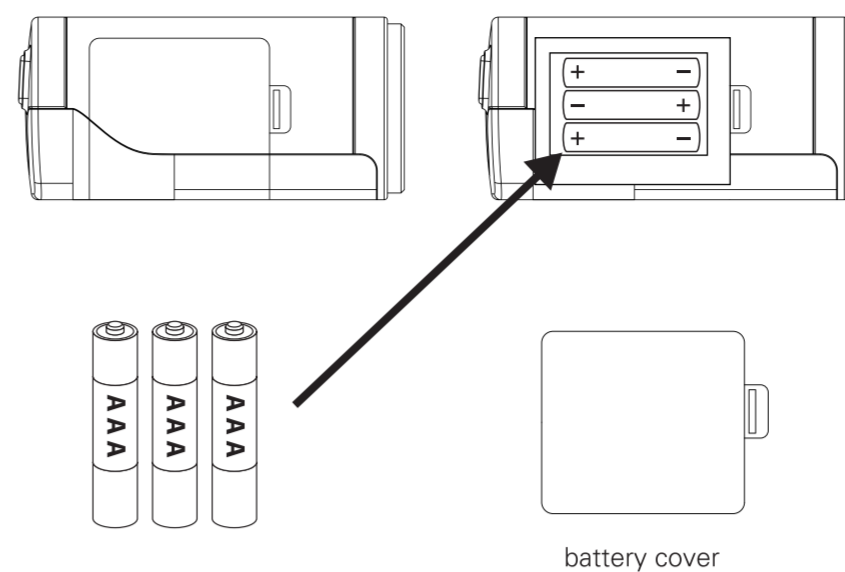


Requires 3 AAA batteries and SD Card (not included)

## Setting up your camera

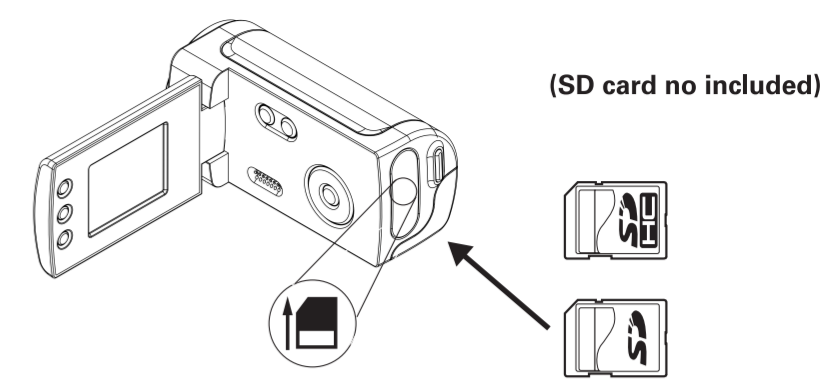
### Battery Installation

1. Open the battery cover by pressing the battery lock.
2. Insert 3 alkaline "AAA" size batteries (not included) into the compartment.
3. Close the battery cover.



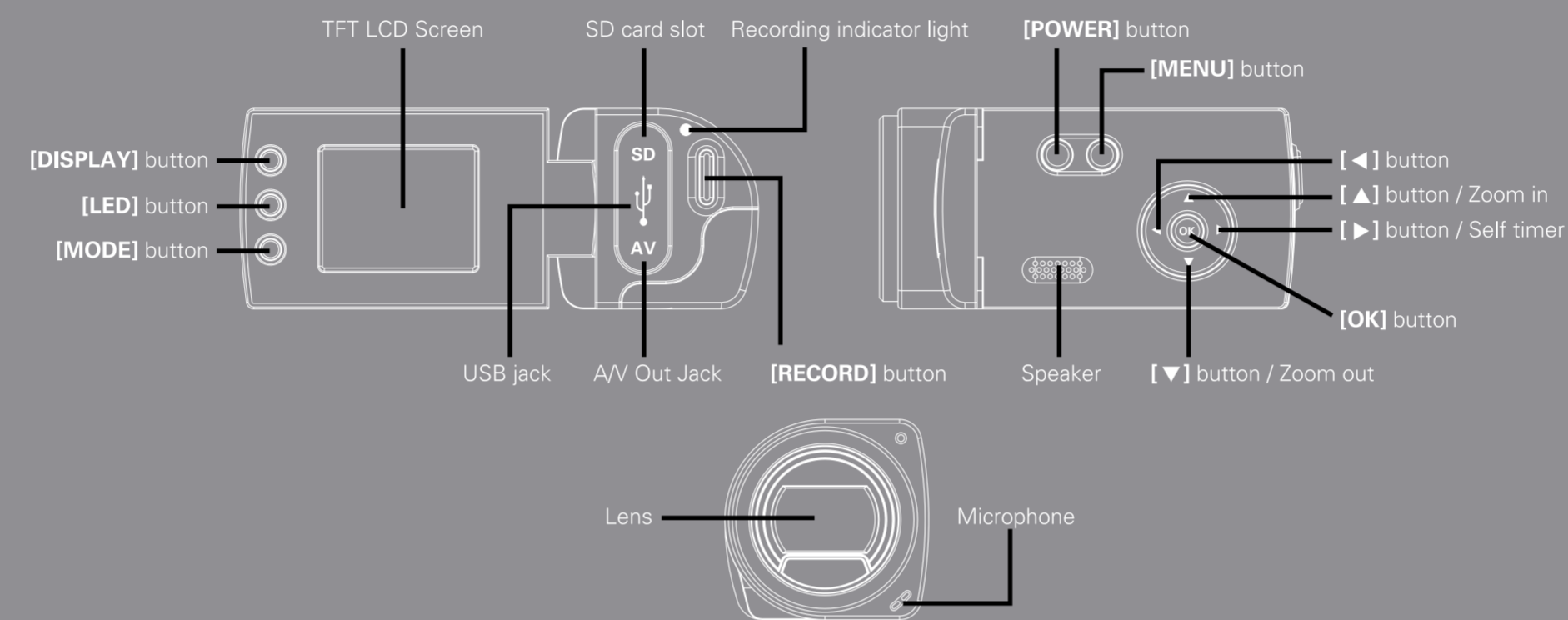
### SD card installation

- This camera has no internal memory and requires an **SD/SDHC** card (**card not included**) to record videos or take pictures. The camera can support SD/SDHC cards up to **8GB**. To install the SD card into the camera, follow the steps below:
1. Turn off the camera.
  2. Insert the SD card into the card slot (as shown below) until it clicks and locks into place.
  3. To remove the card, gently push it in until it pops out.



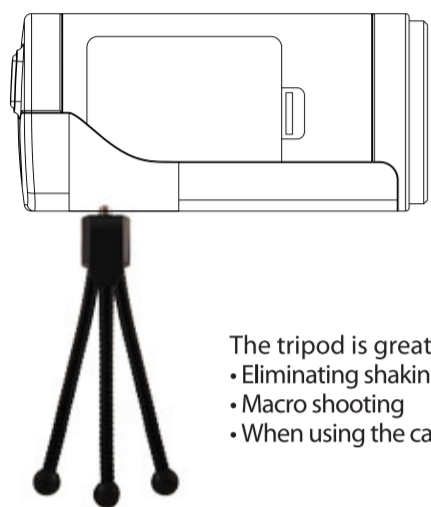
- A card can only be inserted one way; do not use force when inserting the card.
- Inserting or removing a card while camera is on may damage the card or camera.
- This camera supports SD or SDHC cards up to 8GB.

## Location of controls



### Connecting the tripod

Screw in and secure the tripod to the bottom of the video camera as shown in the diagram.

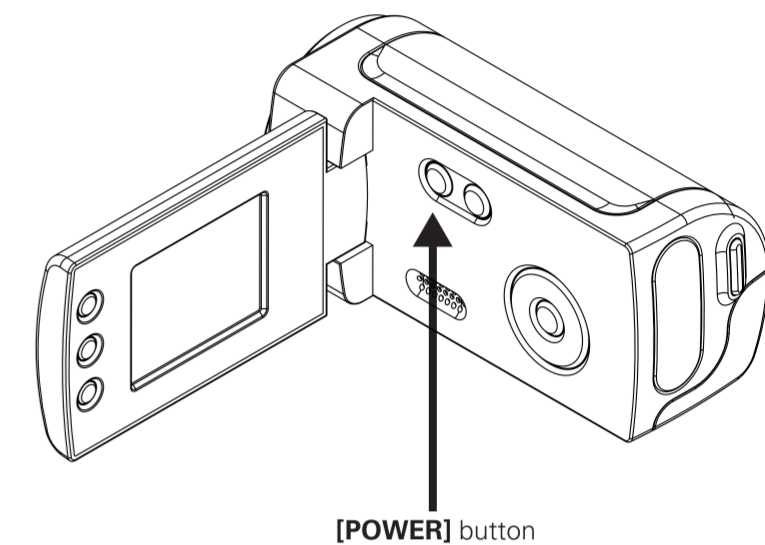


- The tripod is great for:
- Eliminating shaking for videos and blurry pictures
  - Macro shooting
  - When using the camera as a webcam

## Using your camera

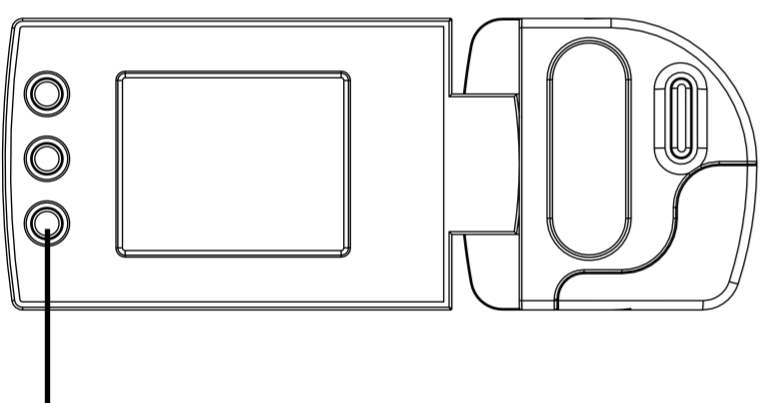
### Turning the camera on/off

1. To turn the camera on, press and HOLD the **[POWER]** button until the display turns on.
2. To turn the camera off, press and HOLD the **[POWER]** button until the display turns off.



## Camera modes

When you turn on the camera, the default mode is **Video Mode**. To scroll through and select one of the camera modes below, press the **[MODE]** button until the desired mode is displayed.



[MODE] button

Press the **[MODE]** button to switch between:

- Video Mode - Record videos
- or
- Picture Mode - Take Pictures
- or
- Playback Mode - Playback videos or view pictures

## Video Mode

1. Make sure that an SD card is inserted into the camera.
2. Turn on the camera, the **Standby Recording Screen** is displayed and the camera is in the **Video Mode**.
3. Press the **[RECORD]** button, the Recording Screen is displayed and the camera is recording video (The recording indicator light is lit when recording).
4. To stop recording, press the **[RECORD]** button once again, and the display returns to the **Standby Recording Screen**.

### Standby Recording Screen



1. Video Mode Icon
2. White balance
3. Movie size
4. Metering
5. Recording time (video)
6. SD card indicator
7. Digital zoom indicator
8. Battery Indicator

### Zoom

Use the **[▲]** and **[▼]** button to zoom in and out when recording video, taking photos or viewing Still images.



### LED Light

Press the **[LED]** button to turn the LED light On or Off.

### Pause recording

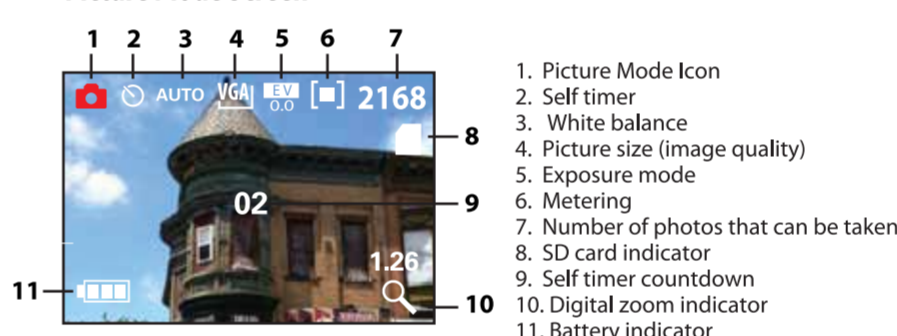
Press the **[▶]** button to pause while recording.



## Picture Mode

1. Make sure that an SD card is inserted into the camera.
2. Turn on the camera, and press the **[MODE]** button once to enter the **Picture Mode** (the **Picture Mode Screen** is displayed).
3. Press the **[RECORD]** button to take a picture.

### Picture Mode Screen



1. Picture Mode Icon
2. Self timer
3. White balance
4. Picture size (image quality)
5. Exposure mode
6. Metering
7. Number of photos that can be taken
8. SD card indicator
9. Self timer countdown
10. Digital zoom indicator
11. Battery indicator

### Self timer and continuous shooting

1. Press the **[▶]** button to select 2 seconds, 10 seconds self timer, or burst, and then press the **[RECORD]** button.
2. When you select 2 or 10 seconds self timer, the timer starts counting down from 2 or 10 seconds, and the camera takes a picture; when you select burst, the camera takes 3 pictures continuously.
3. Press the **[RECORD]** button to start self timer or burst snapshot.
4. Press the **[▶]** button to turn off the self timer or burst feature.

## Playback Mode

1. Turn on the camera, and press the **[MODE]** button twice to enter the **Playback mode**.
2. Use the **[◀]** or **[▶]** button to select a video or picture.
3. If you select a video, press the **[RECORD]** button to start or stop the playback.
4. Press the **[MODE]** button again to return to the **Video Mode** or **Picture Mode**.

### Video Playback Screen



1. Playback Mode Icon
2. Number of saved videos
3. SD Card indicator
4. File type (video file)

### Picture Playback Screen

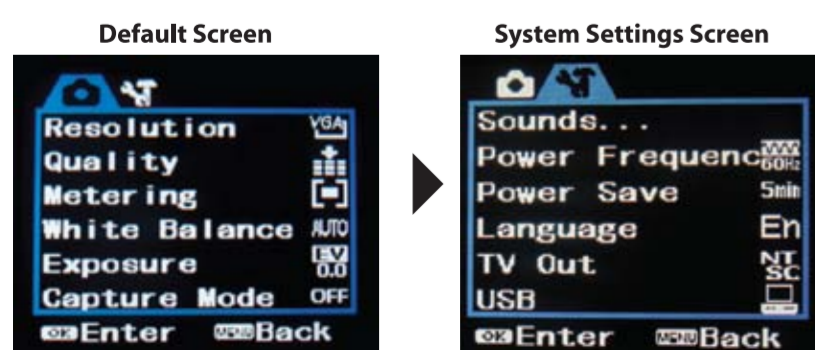


1. Playback Mode Icon
2. Number of saved pictures
3. SD Card indicator
4. File type (picture file)

## System Settings

Press the **[Menu]** button within any mode and follow the steps below to access the **System Settings Screen**.

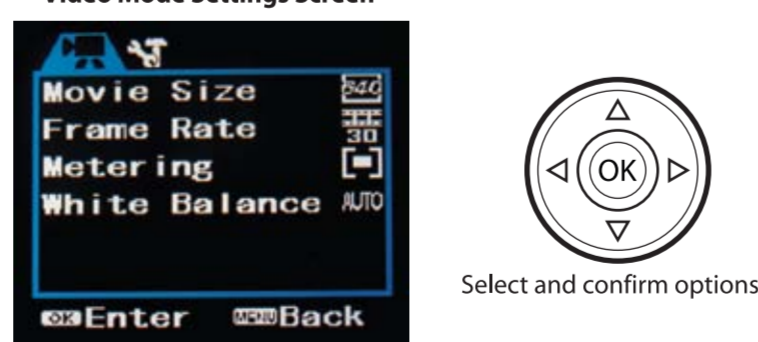
1. Use the **[▶]** button to select **[▶]**.
2. Use the **[▲]** **[▼]** **[◀]** **[▶]** buttons to select an option, and confirm by pressing the **[OK]** button.
3. Press the **[Menu]** button to exit the **System Settings Screen**.



## Video Mode Settings

1. Press the **[MODE]** button until the **Video Mode** is selected.
2. Press the **[Menu]** button to access the **Video Mode Settings Screen**.
3. Use the **[▲]** **[▼]** **[◀]** **[▶]** buttons to select an option, and confirm by pressing the **[OK]** button.
4. Press the **[Menu]** button to exit the **Video Mode Settings Screen**.

### Video Mode Settings Screen



Select and confirm options

### Video Mode Settings Options

|                      |  |
|----------------------|--|
| <b>MOVIE SIZE</b>    | <ul style="list-style-type: none"> <li>• 1280x720 (Highest quality video/shortest recording time)</li> <li>• 640X480 (higher quality video/shorter recording time)</li> <li>• 320x240 (lower quality video/longer recording time)</li> </ul> |
| <b>FRAME RATE</b>    | <ul style="list-style-type: none"> <li>• 30 Frames Per Second (higher quality video/shorter recording time)</li> <li>• 15 Frames Per Second (lower quality video/longer recording time)</li> </ul>   |
| <b>METERING</b>      | <ul style="list-style-type: none"> <li>• Center / Multi / Spot</li> </ul>  |
| <b>WHITE BALANCE</b> | <ul style="list-style-type: none"> <li>• Auto / Daylight / Cloudy / Fluorescent / Bulb</li> </ul>  |

## Picture Mode Settings

1. Press the **[MODE]** button until the **Picture Mode** is selected.
2. Press the **[Menu]** button to access the **Picture Mode Settings Screen**.
3. Use the **[▲]** **[▼]** **[◀]** **[▶]** buttons to select an option, and confirm by pressing the **[OK]** button.
4. Press the **[Menu]** button to exit the **Picture Mode Settings Screen**.

### Picture Mode Settings Screen



Select and confirm options

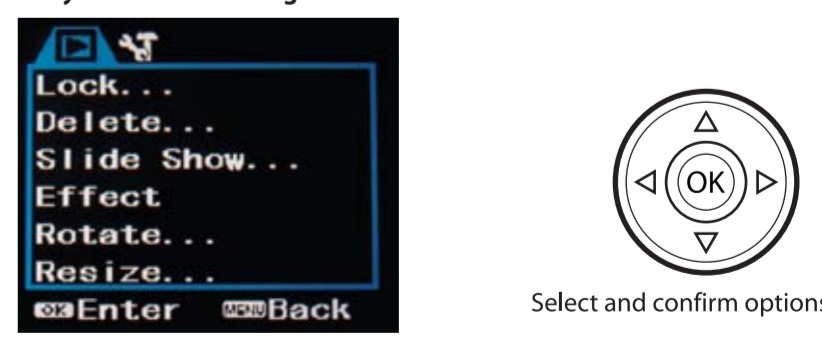
### Picture Mode Settings Options

|                      |   |
|----------------------|---|
| <b>RESOLUTION</b>    | 12M(4000x3000)/ 5M(2592x1944)/ 3M(2048X1536)/ 1M(1280X960)/VGA(640X480)<br>(Higher picture resolution takes up more space on the card). |
| <b>QUALITY</b>       | Super fine / Fine / Normal  |
| <b>METERING</b>      | Center / Multi / Spot   |
| <b>WHITE BALANCE</b> | Auto / Daylight / Cloudy / Fluorescent / Bulb   |
| <b>EXPOSURE</b>      | Adjust the exposure   |
| <b>CAPTURE MODE</b>  | "Off" (disables the Picture Mode), "2" or "10" second options (self timer), "Burst"   |
| <b>EFFECT</b>        | Normal / B&W / Sepia / Negative / Red / Green / Blue  |

## Playback Settings

1. Press the **[▶]** button to select playback mode.
2. Press the **[MENU]** button to access the **Playback Mode Settings Screen**.
3. Use the **[▲]** **[▼]** **[◀]** **[▶]** buttons to select an option, and confirm by pressing the **[OK]** button.
4. Press the **[MENU]** button to exit the **Playback Mode Settings Screen**.

### Playback Mode Settings Screen



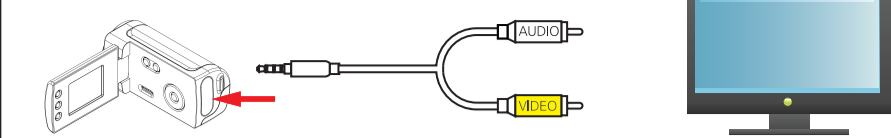
Select and confirm options

### Playback Mode Settings Options

|                   |   |
|-------------------|---|
| <b>LOCK</b>       | Lock one or all of your picture and video files. When locked they will not be able to be deleted. |
| <b>DELETE</b>     | "One" (Delete the currently displayed video or picture) or "All"                                  |
| <b>SLIDE SHOW</b> | Start a slide show, and adjust the slide show settings  |
| <b>EFFECT</b>     | Select from various special effects   |
| <b>ROTATE</b>     | Rotate the picture  |
| <b>RESIZE</b>     | Resize the picture  |
| <b>VOICE MEMO</b> | Record a voice memo, or delete a previously recorded voice memo.                                  |

# Connecting the camera

## Connecting your camera to a TV



A / V Cable

To enjoy and watch or view your videos and pictures on a television, please follow the instructions below:

1. Connect the black plug of the provided A / V Cable to your camera's A / V OUT jack.
  2. Connect the white and Yellow plugs to your television's matching video (yellow) and audio (red or white) inputs.
  3. Turn on the camera- the display will turn on briefly and shut.
  4. Click on your television's "Input" button until you see the live feed from the camera.
  5. Press the [ ] button to enter the **Playback Mode**.
  6. Use the [ ] or [ ] button to select a video file, and press the [ Record ] button to begin or stop playback.
- OR
- Select a JPG picture file and press the [ OK ] button and select "Slide Show" from the **Playback Mode Settings Screen**. Press the [ ] button and select "Start" to begin a slideshow of all the pictures stored on the camera's SD card.

## Connect your camera to a computer



Computer

To edit or upload and share your videos and pictures, you must first transfer them to your computer. Follow the steps below to connect the camera to your computer, and use the provided Media Impression software to manage, view, edit and share your videos and pictures.

1. Make sure the camera is turned Off, and that an SD / SDHC card is inserted in the camera before connecting it to your computer.
2. Insert the smaller end of the USB cable into the camera's USB port.
3. Connect the larger end of the USB cable into your computer's USB port.
4. Turn ON the camera.
5. Look for your camera by clicking on My Computer, it should usually appear as "Removable Disk". Select a file on your camera, and simply move it into your computer (we recommend copying the files into the "My Videos" or "My Pictures" folder of your computer) in the usual way (drag-and-drop, copy-and-paste). Or open the Media Impression software, to easily locate your camera and transfer, view, edit , and upload your video and picture files (See "ArcSoft® Media Impression").
6. Before disconnecting the camera, click on the "Safely Remove Hardware" icon usually located on the lower right corner of your **Desktop**.

Please do not disconnect the USB cable during loading, as it may cause damage to the camera and the files on the SD card.

# ArcSoft® Media Impression

## Installing

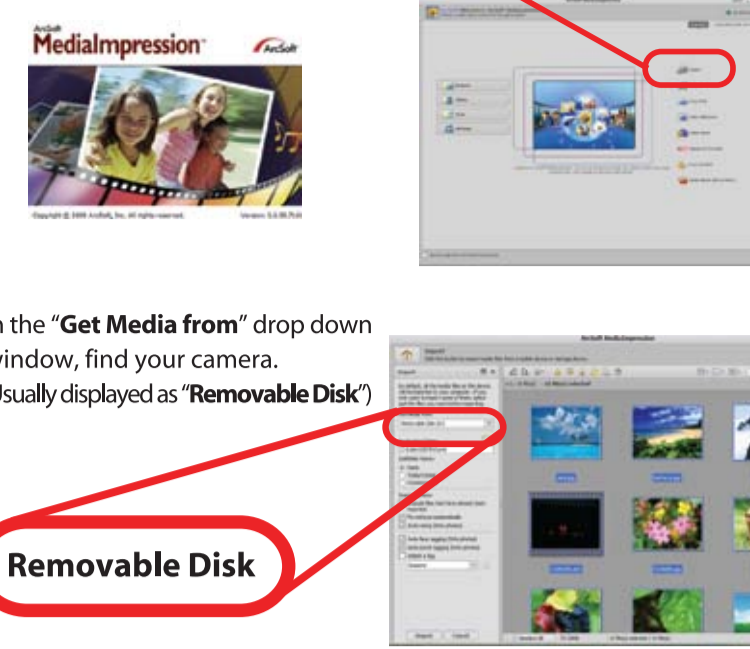
Install the included ArcSoft® Media Impression software before connecting the camera to your computer. With this software you will be able to manage, view, edit, transfer, and easily upload / share your videos and pictures. Follow the instructions below to install the Media Impression software onto your computer.



1. Insert the provided CD into the CD-ROM drive of your computer, and click on "ArcSoft® Media Impression".
2. Click "Install".
3. Click "Next" when prompted and "Finish".
4. To open Media Impression, click on the **Media Impression** icon on your **Desktop**.

## Transferring videos and pictures from the camera to your computer

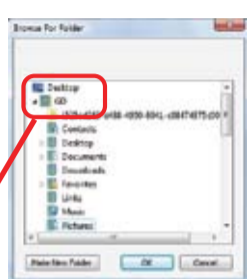
1. Open Media Impression.
2. Click "Import".



3. In the "Get Media from" drop down window, find your camera. (Usually displayed as "Removable Disk")

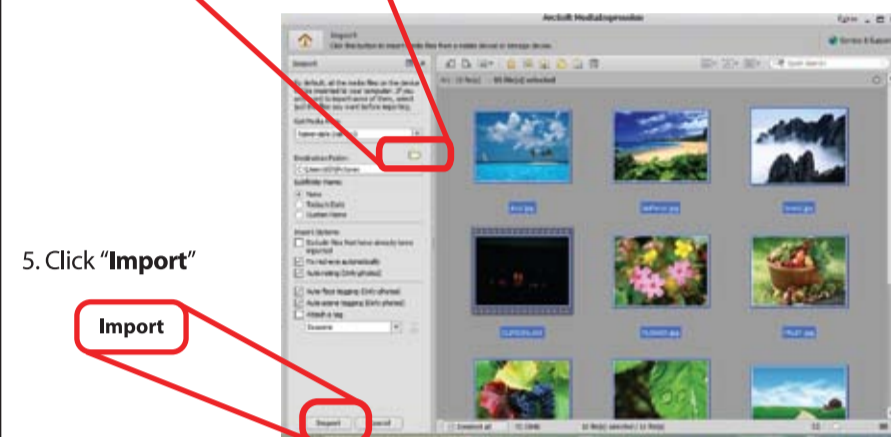
Removable Disk

4. Select a destination on your computer where you would like to transfer the videos or pictures by clicking on the "Destination Folder" drop down window. We recommend transferring the files to either your computer's **Desktop**, or the "My Videos" or "My Pictures" folders, where you can easily access and find your videos and pictures.



Destination Folder

Browse a destination



Import

6. If you wish to delete the original files from the camera select "Delete Original Files", otherwise just click "Done".



## Viewing videos on your computer

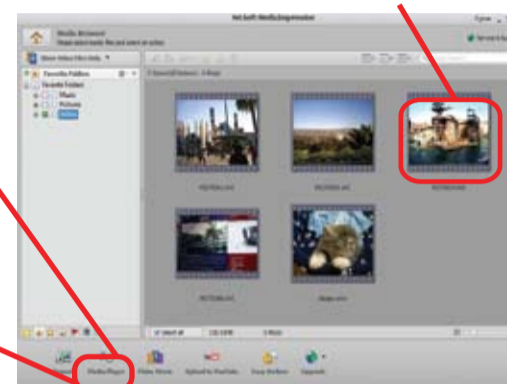
1. From the **Main Screen** click on "Video".



2. Select a video and click on the Media Player icon.



Select a video.



3. The video will load and begin to play.



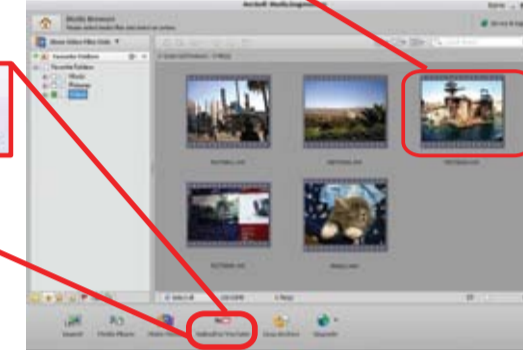
## Uploading videos to YouTube™

1. From the **Main Screen** click on "Video".



2. Select a video.

3. Click on the YouTube™ icon.



4. Enter your YouTube™ username and password (mark the checkboxes to save the username and password for future uploads), and click "Login".



5. Enter the required information and click "Upload".



Upload



6. If the video successfully uploaded, you will see the message below.



## Viewing pictures on your computer

1. From the **Main Screen** select "Pictures".



Main Screen

2. Select a picture, and click on the "Photo Viewer" icon.

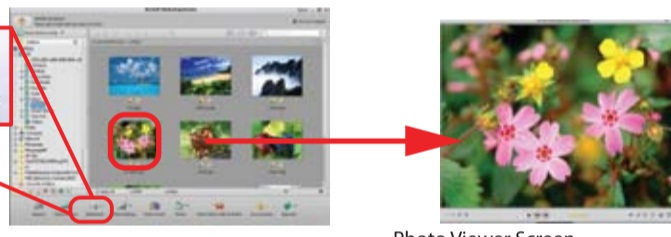
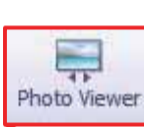


Photo Viewer Screen

3. Within the **Photo Viewer Screen** you can:

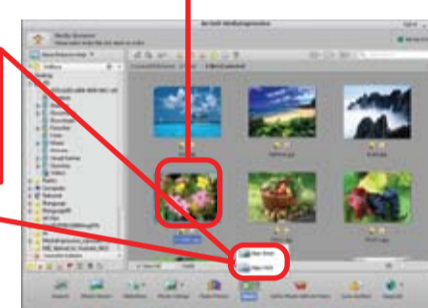
- Zoom in or out of a picture
- Start or pause a slide show
- Move to the previous or next picture
- Adjust the slide show settings
- Rotate a picture
- Eliminate Red Eye
- Delete

## Emailing Pictures

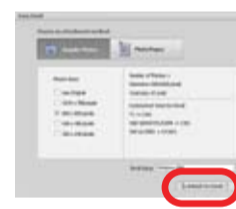
1. Select a picture, and click the "Easy Email" icon.



Select a picture



2. Adjust the settings according to your preference, and click "Attach to Email".



For more information regarding ArcSoft's Media Impression software, click "Extras" (located on the upper right hand corner) and then click "Help".

Attach to Email

## Webcam feature

### Installing the WebCam Driver

Your Digital Video Camera may also be used as a webcam. This feature is quite useful if you would like to utilize the video function on Skype™ and other similar applications. To use the camera as a webcam you must first install the **WebCam Driver**. Follow the instructions below to install the driver and use the webcam feature.

1. Insert the provided CD into the CD-ROM drive of your computer, and click on "WebCam Driver".
2. Click "Next".
3. Click "Install" and "Finish" when prompted.



Installation CD

Computer

WebCam Driver

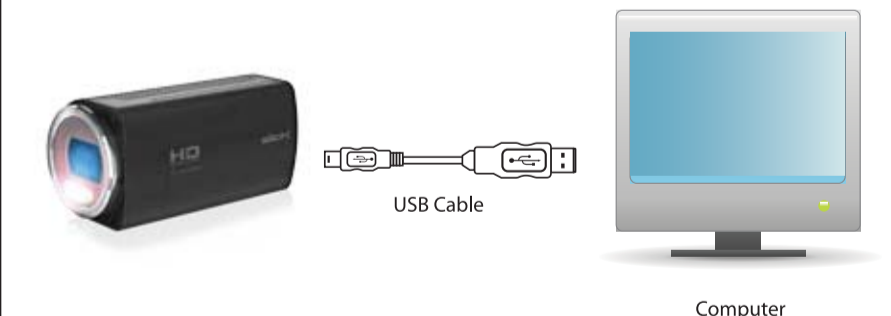


## Using Your camera as a webcam

1. Turn on the camera, and press the [ Menu ] button.
2. Press the [ ] button and select [ ] to enter the **System Settings Screen**.
3. Use the [ ] button to scroll down to "USB" and press the [ ] button.
4. Select "PCCAM" and press the [ OK ] button.
5. Press the [ Menu ] button once again to exit the **System Settings Screen**.
6. When you connect the camera, it will be recognized by your computer as a webcam.

◆ You can press [MODE] button to switch "MSDC" to "PC Cam" when you Connect the Camera to PC.

We recommend using the included mini tripod when using your camera as a webcam. When you set the camera to PCCAM, you will not be able to access the files on the SD card when connecting the camera to your computer. Make sure to set it back to the default setting by selecting "USB" and then "MSDC" in System Settings.



USB Cable

Computer

## Trouble Shooting

### Camera will not turn on

- Check that the batteries are properly inserted.
- Try replacing the batteries.

### The display does not light up, or the message "No Card!" is displayed

- Check that the SD card is properly inserted into the card slot.

### My videos / pictures are fuzzy or poor quality

- Try adjusting the "Movie Size" and "Frame Rate" from the **Video Mode Settings Screen** or the "Resolution" and "Quality" from the **Picture Mode Settings Screen**. Remember that choosing higher quality settings will take up more space on the memory card.
- Make sure to keep the camera steady when filming, and be aware of the lighting environment (the more light the better your pictures and videos will turn out).
- Avoid using the zoom too much, as it will affect the quality of your video and pictures.
- Clean the lens of your camera, and make sure it is free of fingerprints (Clean only with a non abrasive dry cloth and make sure the player is turned off before cleaning).

### My videos are jumpy or shaky

- Use a mini tripod.
- Adjust the video / picture quality to a higher setting.

### Videos do not play on my TV

- Check that you have properly connected the A / V cable to the camera and TV inputs.
- Make sure that the camera is turned on (The display will be off when you connect the A / V cable to the A / V OUT jack of the camera).
- Most televisions have several inputs, check on the TV or your TV's remote for the button that controls the inputs on your TV. Scroll through the different inputs until you see the live feed from the video camera.

### My computer does not recognize the camera when I connect it to the USB port

- Check the connection of the USB cable, make sure it is properly connected.
- If you recently used the webcam feature, you must go to the **System Settings Screen** and select "USB" and choose the "MSDC" option.

Still having trouble with your camera? Please call or email customer support:



## FCC information

FCC Part 15  
This equipment has been tested and found to comply with the requirements for a Class B digital device under Part 15 of the Federal Communications Commission (FCC) rules. These requirements are intended to provide reasonable protection against harmful interference in a residential installation. This equipment generates, uses and can radiate radio frequency energy and, if not installed and used in accordance with the instructions, may cause harmful interference to radio communications. However, there is no guarantee that interference will not occur in a particular installation. If this equipment does cause harmful interference to radio or television reception, which can be determined by turning the equipment off and on, the user is encouraged to try to correct the interference by one or more of the following measures:

- Re-orient or relocate the receiving antenna.
- Increase the separation between the equipment and receiver.
- Connect the equipment into an outlet on a circuit different from that to which the receiver is connected.
- Consult the dealer or an experienced radio/TV technician for help.

**Do not attempt to repair or modify this equipment.**  
Warning: Changes or modifications to this equipment not expressly approved by the party responsible for compliance could void the user's authority to operate the equipment.

## Safety Precautions

- Always follow these basic safety precautions when using your camera. This will reduce the risk of product damage and personal injury.
- Do not disassemble, repair or modify the camera by yourself. Refer servicing to qualified personnel.
  - If the LCD display breaks, do not touch the glass or liquid, and contact customer support.
  - The use of a NON-RECOMMENDED accessory may cause fire, electric shock, or injury. For approved accessories, please contact customer support.
  - Keep the camera away from direct sunlight and any direct heat source.
  - Do not expose the camera to rain or moisture.
  - Avoid using the camera in dry environments to avoid static.
  - Never apply heavy impact on the player, or place it on a magnet.
  - When connecting the camera to a computer or TV, route the cable so that people and pets are not likely to trip over it.
  - Clean only with a dry cloth. Make sure the player is turned off before cleaning. Do not use a liquid cleanser.
- Important Battery Precautions**
- Use only the type of battery specified in this user manual.
  - Batteries may present a risk of fire, explosion, or chemical burn if abused. Do not try to charge a battery that is not intended to be recharged.
  - Do not dispose of the battery (ies) in a fire. They may explode. Check with local codes for disposal instructions.
  - Non-rechargeable batteries, such as alkaline batteries, may leak if left in your product for a long period of time. Remove the batteries from the product if you are not going to use it for a month or longer.
  - If your product uses more than one battery, do not mix different types of batteries. Make sure you replace the old, with all new batteries. Mixing different types of batteries or inserting them incorrectly may cause them to leak.
  - In the event that the battery is leaking, do not handle the device with your bare hands. Contact the service center for help since the liquid may remain in the player. If your body or clothes had contact with the battery liquid, wash it off thoroughly with water. Also, if some liquid gets into your eyes, do not rub your eyes but immediately wash them with clean water and consult a doctor.
  - Please help to protect the environment by recycling or disposing of batteries according to federal, state, and local regulations.

## Warranty information

### Limited Warranty

In the unlikely event that this product is defective, or does not perform properly, you may within **90** days from your original date of purchase return it to the authorized service center for repair or exchange.

### TO OBTAIN WARRANTY SERVICE:

- Provide proof of the date of purchase within the package (Dated bill of sale).
- Prepay all shipping costs to the authorized service center, and remember to insure your return.
- Include a return shipping address (no P.O. Boxes), a telephone contact number, and the defective unit within the package.
- Describe the defect or reason you are returning the product.

Your product will be repaired or replaced, at our option, for the same or similar model of equal value if examination by the service center determines this product is defective. Products received damaged as a result of shipping will require you to file a claim with the carrier.

### The shipping address of the authorized service center is:

Southern Telecom, Inc.  
ATT: Customer Service Department (2nd Floor)  
14-C 53rd Street  
Brooklyn, NY 11232

### Warranty service not provided

This warranty does not cover damage resulting from accident, misuse, abuse, improper installation or operation, lack of reasonable care, and unauthorized modification. This warranty is voided in the event any unauthorized person opens, alters or repairs this product. All products being returned to the authorized service center for repair must be suitably packaged.

### Limitation of Warranty:

THE WARRANTY STATED ABOVE IS THE ONLY WARRANTY APPLICABLE TO THIS PRODUCT. ALL OTHER WARRANTIES, EXPRESS OR IMPLIED INCLUDING ALL IMPLIED WARRANTIES OF MERCHANTABILITY OR FITNESS FOR A PARTICULAR PURPOSE ARE HEREBY DISCLAIMED. NO VERBAL OR WRITTEN INFORMATION GIVEN BY SOUTHERN TELECOM INC. ITS AGENTS, OR EMPLOYEES SHALL CREATE A GUARANTY OR IN ANY WAY INCREASE THE SCOPE OF THIS WARRANTY.

REPAIR OR REPLACEMENT AS PROVIDED UNDER THIS WARRANTY IS THE EXCLUSIVE REMEDY OF THE CONSUMER. SOUTHERN TELECOM INC. SHALL NOT BE LIABLE FOR INCIDENTAL OR CONSEQUENTIAL DAMAGES RESULTING FROM THE USE OF THIS PRODUCT OR ARISING OUT OF ANY BREACH OF ANY EXPRESS OR IMPLIED WARRANTY ON THIS PRODUCT. THIS DISCLAIMER OF WARRANTIES AND LIMITED WARRANTY ARE GOVERNED BY THE LAWS OF THE STATE OF NEW YORK EXCEPT TO THE EXTENT PROHIBITED BY APPLICABLE LAW. ANY IMPLIED WARRANTY OF MERCHANTABILITY OR FITNESS FOR A PARTICULAR PURPOSE ON THIS PRODUCT IS LIMITED TO THE APPLICABLE WARRANTY PERIOD SET FORTH ABOVE.

Some states do not allow the exclusion nor limitation of incidental or consequential damages, or limitations on how long an implied warranty lasts so the above limitations or exclusions may not apply to you. This warranty gives you specific legal rights, and you also may have other rights that vary from state to state.

# slick®

Made in China / Designed in the USA  
Manufactured by: Southern Telecom, Inc. Brooklyn, NY 11232  
© 2011 Southern Telecom, Inc. All rights reserved.  
Slick is a registered trademark of Southern Telecom, Inc.  
[www.slickusa.com](http://www.slickusa.com)

YouTube™ is a registered trademark of YouTube, LLC.  
This product is not affiliated with, or endorsed by YouTube™.

ArcSoft and Media Impression are trademarks of ArcSoft, Inc.  
(The SD Iogo is a trademark of the SD Card Association)  
Other trademarks and trade names are those of their respective owners.

All screen images are simulated.