



EK-UAK2 / EK-UAK4 2/4 ports USB KVM Switches

Quick Installation Guide

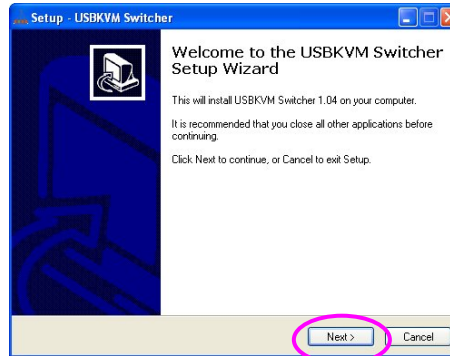
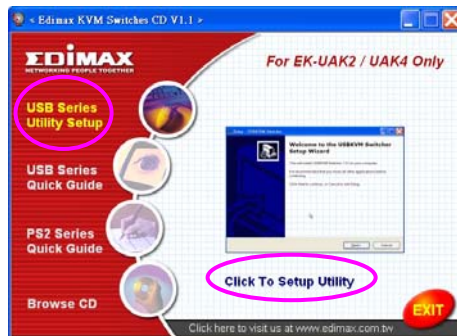
KVM Switching Client Software for Windows
User-definable Hotkeys
Independent/Simultaneous Audio & PC Switching
Auto scan Delay Time Programmable

Introduction

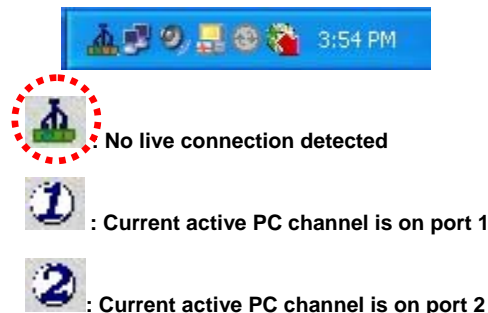
The **EK-UAK2 / EK-UAK4** is a 2 / 4 ports Slim Palmtop USB KVM Switch with *optional* audio and microphone switching function. It allows you to access, control, boot and reboot multiple USB-enabled computers. The independent audio/mic switching function allows an uninterrupted audio experience on a same connected computer even when you switch to another computer.


Out-of-the-box Installation

Step 1. Insert the companion CD ROM into your CD drive, and the installer program will be run, click the “**USB Series Utility Setup**” then click “**Click To Setup Utility**” the programs will be start... (or you can find it with the Explorer and double-click its software icon to start installation). Complete the software installation on each of the computers to be connected to the KVM Switch.




After the installation is completed, you will see a KVM Switcher icon on the system tray of your window desktop. Just right click to evoke the operation menu and double-click to evoke configuration box. For operation details of the KVM Switcher software, please refer to the “**Operation Quick Reference**”.




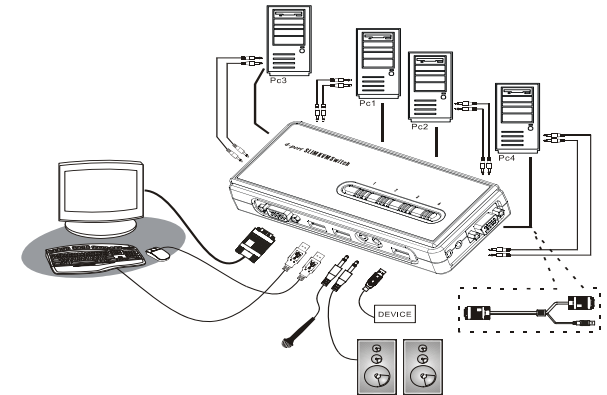
 The KVM Switcher Software supports only the Windows operating system on PC platforms. For other OS platforms such as Linux, you can still use the keyboard hotkey - *ScrLk + ScrLk* - to switch PC. However, this switching hotkey is not available on non-PC platform such as MacOS. When connected to a Mac machine, use the face-panel button to switch port.

Step 2. Connect the shared USB keyboard, mouse, monitor, speaker/headphone and microphone each to its port on your KVM Switch.

Step 3. Connect each KVM PC port to a computer, using the slim 3-in-1 KVM combo cable and the audio/mic cable. After you have connected the KVM and computers properly, Now you can operate the KVM Switch immediately.

 Some older computers with USB interface might need to manually enable the USB option in the BIOS settings before you can use any USB devices. If your USB interface does not work, please check the USB option status in the BIOS.

 If you use Windows 95/98/SE and has not yet installed a USB mouse on your computer, there might be an error message telling you that mouse is not detected and prompting you to decide whether to ignore the same message in the future, and yet you found there is no mouse movement to disable this message... So it is suggested that you should installed your USB mouse on your computer first, before connecting it to this KVM Switch.



EK-UAK4 Configuration Diagram

Easy Operation

There are two methods to control your KVM Switch for PC switching: using the face-panel push buttons or a hotkey sequence. For audio/mic switching, use the hotkey command. See Quick Reference Sheet

Face-panel buttons


The face-panel buttons allows you a direct control over PC port switching. Simply press the button to switch PC port. By default, PC port switching and Audio/Mic port switching are unbound (either will be switched independently).

Keyboard hotkey

A keyboard hotkey sequence consists of at least three specific keystrokes: See Quick Reference Sheet

Hotkey = **Ctrl+ Alt + [Command key]***
Universal hotkey = **ScrLk + ScrLk**

* The command key is user-definable via the configuration dialog box


 Each keystroke within a hotkey sequence should be pressed within 2 seconds. Otherwise, the hotkey sequence will not be validated.

Slim Palmtop USB KVM Switch - Operation Quick Reference

There are three methods to control your KVM Switch for PC and Audio/Mic channel selection: using (1) the face-panel push button, (2) a hotkey sequence or (3) the KVM Switcher Software.

Face-panel button

The face-panel button allows you a direct control over KVM switching operation. Simply press the button to switch to the corresponding PC port (and audio/mic channel, if binding is enabled). By default, PC port switching and audio/mic port switching are bound together.

 You can use the face-panel button to switch to an empty port that is not connected with any computer. Normally, if you use keyboard hotkeys or the KVM Switcher software, you will not be able to switch to an empty port.


Keyboard hotkeys

User-definable hotkeys for PC selection:

Hotkey sequence = Ctrl + Alt + [command key]*


* Please refer to next section for keys that are qualified to be used as a command key


Universal hotkey for PC toggle-switching:


 Both the universal hotkey, ScrLk + ScrLk and the user-definable hotkey, Ctrl + Alt + [command key] WILL NOT allow you to switch to an empty port that is not connected with any computer. To force your KVM to switch to an empty port, just press the face-panel button to switch.

Universal Hotkey sequence = ScrLk + ScrLk

* For other operating systems on PC such as Linux, you can still use this special hotkey to facilitate PC switching. This special hotkey is not available for Mac. HOWEVER, you can press button to switch in any case.

 Each keystroke within a hotkey sequence should be pressed within 2 seconds. Otherwise, the hotkey sequence will not be validated.

 After perform port switching, you have to wait till the KVM Switch icon shows forth the target port before you can perform next switching again. The KVM Switcher icon could be found on the system tray of your Windows desktop after its installation.

 All the hotkeys are only functional after your PCs are booting into the OS. If you want to switch PC in the BIOS/preboot stage, press the face-panel button to switch.

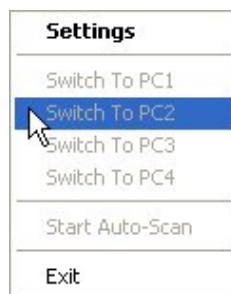
KVM Switcher Software (only for Windows platform)

In addition to PC switching, the KVM Switcher Software also allows you more advanced functions such as described in the next section....

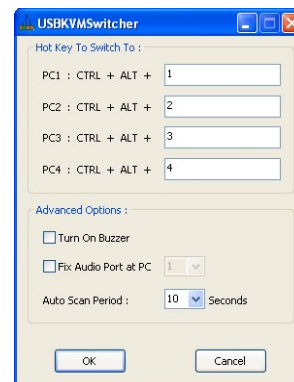
KVM Switcher Operation Reference

Switch to PC x by Operation Menu

Right-click the KVM Switcher icon to evoke the operation menu, then select whichever PC that is available for switching. Once you select a PC channel, it will immediately switch to that PC. Note that the unconnected port(s) or the active port will be grayed-out and non-selectable.



KVM SWITCHER Operation Menu Dialog Box



KVM SWITCHER Configuration Dialog Box

Switch to PC x by Keyboard Hotkeys

Hit the hotkey according to your current hotkey definition:

Hotkey sequence = Ctrl + Alt + [command key]*

* The factory default hotkey setting is Ctrl + Alt + 1/2/3/4 for PC 1/2/3/4. You can also use ScrLk + ScrLk to switch PC.

Start Auto-scan

Right-click the KVM Switcher icon to evoke the operation menu, then select *Start Auto-Scan* to activate auto-scanning.

Stop Auto-scan

(While auto-scanning) right-click the KVM Switcher icon to evoke the operation menu, then select *Stop Auto-Scan* to de-activate auto-scanning. Or you can press any button on the face-panel to stop Auto-scan.

KVM Switcher configuration


Right-click the KVM Switcher icon and select *Settings* or double-click the icon to bring up the configuration dialog box.

Define Hotkey commands

You can specify the command key as you like by typing it in. For example, you can specify the hotkey for switching to PC 1 as CTRL + ALT + A by typing an A (not case-sensitive) in the editable field.

Hotkey Sequence = CTRL + ALT + [command key]*

* The command key is user-definable via the configuration dialog box

 Except those control keys such as Alt, Ctrl, Shift, CAPS, Tab, Esc and those functions keys and edit keys, all other keys on the keyboard, including those number keys on the number pad are all qualified to be used as hotkey command key. In addition to the software KVM Switching by the operation menu and the user-defined hotkeys, you can always use the universal hotkey for PC switching – ScrLk + ScrLk

Turn On Buzzer (optional feature, not available on this model)

This is feature is not available on this model. [Check this option to turn on the buzzer sound]

Fix Audio Port at PC x

Check this option and then select the PC to fix the audio/mic channel to the selected PC. Once this option is checked, the audio/mic channel will be fixed and become non-switchable.

Auto Scan Period

Select the Auto-scan period from 10 ~ 60 seconds with an increment of 5 seconds. The Auto-scan period is the time your KVM Switch will wait to switch to next PC.