



VP-9059

FireWire 1394, 3.5-inch
Portable External Enclosure



USER MANUAL





PROPRIETARY NOTICE

We makes no warranty of any kind with regard to this material, including, but not limited to, the implied warranties of merchantability and fitness for a particular purpose. We shall not be liable for errors contained herein or for incidental or consequential damages in connection with the furnishing, performance, or use of this material.

This document contains proprietary information which is protected by copyright. All rights are reserved. No part of this document may be photocopied, reproduced, or translated to another language without our written consent. The information contained in this document is subject to change without notice.



TRADEMARKS

MS-DOS, Windows, Windows 98SE/NT/2000/Me/XP are trademarks of Microsoft Corporation.

PC is a trademark of International Business Machines Corporation.

Macintosh and Mac are trademarks of Apple Computer, Inc.

All of the third-party brands and names are the property of their respective owners.

FireWire 1394, 3.5" Portable External Enclosure VP-9059 USER MANUAL

Rev. 1.0 Date: June, 16, 2004





Contents

1. Introduction	4
1-1 Features	4
1-2 Package Checklist	5
2. Hardware Installation	5
2-1 System Requirements	5
2-2 Power LED indicator	5
2-3 Assembly	6
2-4 Connect the FireWire 1394, 3.5" portable External Enclosure VP-9059 to Your Computer	9
3. Drivers Installation	10
3-1 Windows 98/Me/2000/XP	10
3-2 Mac OS 10.1X or Above	11
3-3 Linux Kernel 2.4 or Above	11
4. Using The FireWire 1394 External Enclosure	11
4-1 Connect the FireWire 1394 External Enclosure VP-9059 to Computer	11
4-2 Disconnect the FireWire 1394 External Enclosure VP-9059 from Computer	12
5. Partitioning the External Hard Disk	14
5-1 Partition Under Windows 98/ME	14
5-2 Partition under Windows 2000/XP	16



1. Introduction

The VP-9059 is a high-performance 1394 to ATA/ATAPI native bridge with an embedded SBP-2 target solution. It supports a solution for link/transaction layer controller conforming to the IEEE Std 1394 (IEEE 1394-1995 and IEEE 1394.a) up to 400Mbps transfer rate. Compatibles with all 3.5" hard disk drives (HDDs).

Through the SBP-2 port driver, supported by Microsoft Windows 98 SE/2000/ME/XP, SCSI class drivers can use SBP-2 to communicate with IEEE 1394 device using the SCSI command set.

The VP-9059 is ideally suited to hard disk drives (HDDs). It allows IDE drives being able to connect to a 1394 serial bus in a plug-and-play fashion. The ATA/ATAPI interface of VP-9059 supports signal timing up to Ultra-DMA mode 5.

1-1 Features

- ATA/ATAPI to 1394 Native Bridge Two in One Solution.
- Data transfer rates of S100, S200 and S400.
- Fully interoperable with implementation of IEEE-1394(1995) and IEEE 1394.a-2000 compliant.
- Firmware support for SBP-2 target agent.
- Fully ATA/ATAPI-6 compliant.
- Supports IDE PIO modes and DMA modes and Ultra DMA modes up to UDMA 100.
- 4K bytes of FIFO for bi-directional transmit/receive data.
- External Flash ROM interface for easy updating firmware code.

1-2 Package Checklist

The external enclosure VP-9059 package contains the following items:

- 1) The VP-9059 Case
- 2) A User's Manual
- 3) One FireWire 1394 6-pin to 4-pin Converter Cable
- 4) One FireWire 1394 Cable
- 5) One +5V/+12V Power Adapter
- 6) One Power Adapter Power Cord
- 7) Screws bag

If any of these items are missing or damaged, please contact your dealer or sales representative for assistance.

2. Hardware Installation

2-1 System Requirements

Hardware

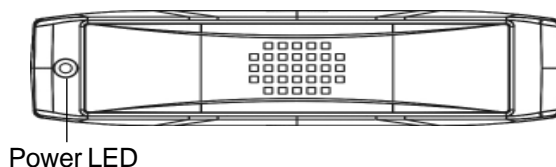
Notebook or desktop computer with support for Firewire 1394.

Operating System

Windows 98SE/Me/2000/XP, and Mac OS 10.1X or above.

2-2 Power LED indicator

The power LED indicator is located on the front panel of the VP-9059. The power LED will be green light when connect with the power cable. When you write the data to the VP-9059, the power LED will be orange light.



2-3 Assembly

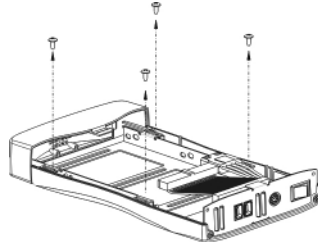
1. Remove the two retaining screws securing the upper case of the Enclosure to the rear face.



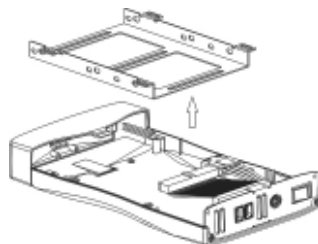
2. Carefully lift the rear of the case. Then, slide it away from the rear face of the front panel.



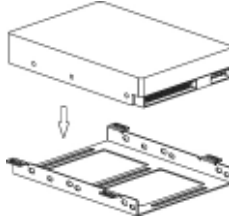
3. Remove the four screws retaining the hard drive cradle to the base unit of the Enclosure.



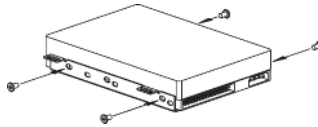
4. Lift out the cradle.



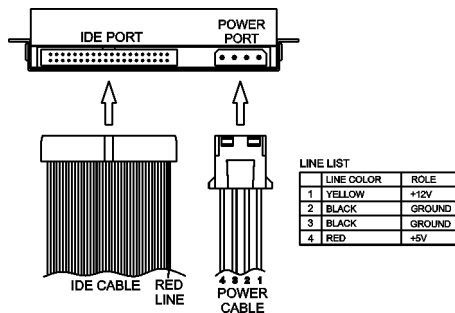
5. Position the hard drive into the cradle.



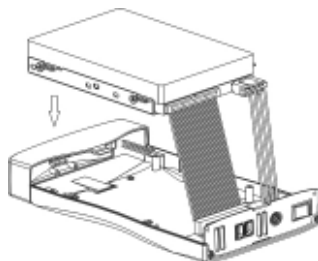
6. Secure the hard drive into the cradle using the four retaining screws.



7. Locate the IDE port and power port situated on the rear face of the hard drive. Plug the IDE cable and power cable into the appropriate port ensuring that they fit securely.

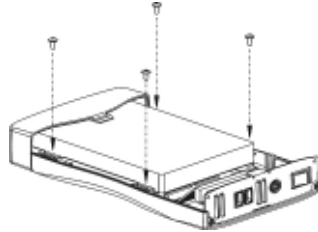


8. Position the cradle/hard drive onto the Enclosure base unit.

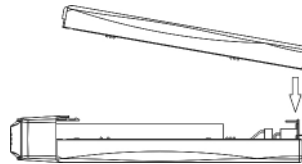




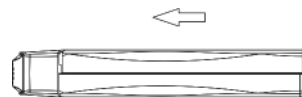
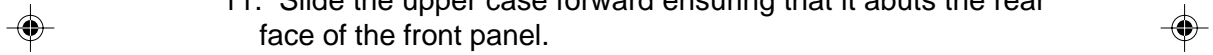
9. Secure the cradle with the four retaining screws.



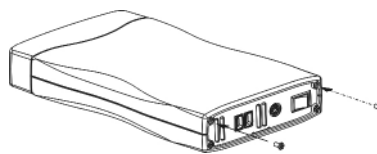
10. Replace the upper case. Note Ensure that the groove in the upper case aligns with the slot in the base unit.




11. Slide the upper case forward ensuring that it abuts the rear face of the front panel.



12. Finally, secure the upper case with the two retaining screws.





2-4 Connect the Firewire 1394, 3.5" portable External Enclosure VP-9059 to Your Computer

Step1:

Boot-up your computer. Make sure the host adapter and driver are installed in your computer.

Step2:

Connect one 1394 connector end of the FireWire 1394 cable into the 1394 Port of your External Enclosure VP-9059.

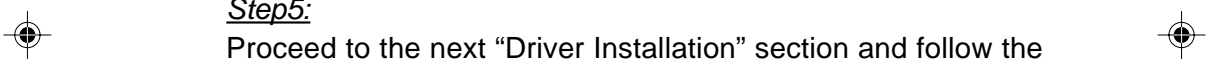
Step3:

Connect the Power Adapter Power Cord to the +5V/+12V Power Adapter. Then, plug one end of power cord into an AC power outlet, and the other end to the power inlet of your FireWire 1394 3.5" Portable External Enclosure VP-9059.

Step4:

Power ON your FireWire 1394 3.5" Portable External Enclosure VP-9059.

Step5:



Proceed to the next "Driver Installation" section and follow the instructions for your operating system after plugging the 1394 connector end of the FireWire 1394 cable into a 1394 port on your computer.

Note:

This device will auto-detect the speed of your 1394 port once the driver is installed.

3. Drivers Installation

3-1 Windows 98/Me/2000/XP

Step1:

If you are plugging the FireWire 1394 External Drive into your computer for the first time, the system will detect a FireWire 1394 Storage Device and install the [IEEE 1394 Storage Device] from system files automatically.

Step2:

Double click on [MyComputer]. A new drive [1394disk] icon should have been added. It is the FireWire 1394 External Drive which just installed.



Notes:

1. This FireWire 1394 External Drive is supported by the IEEE 1394 Storage Device in Windows 98/Me/2000/XP operating systems. You do not need to install any drivers.
2. If the new drive does not appear in [My Computer], it means this FireWire 1394 External Drive is a brand new hard disk drive which does not contain a partition. Please refer to Chapter 5 "Partitioning an External Hard Disk" to prepare your FireWire 1394 External Disk.




3-2 Mac OS 10.1X or Above

1. This FireWire 1394 External Drive is supported by IEEE 1394 Storage Support Mac OS 10.1X or above. You do not need to install any drivers.
2. When you plug this external Hard Disk into the 1394 port of your Mac computer, the mass storage volume should automatically appear on the desktop in a few seconds.

3-3 Linux Kernel 2.4 or Above

This FireWire 1394 External Drive is supported by IEEE 1394 Storage Support Linux Kernel 2.4 or above. You do not need to install any drivers.

4. Using The FireWire 1394 External Enclosure



After the first time installation, you can connect or disconnect the FireWire 1394 External Enclosure VP-9059 without powering off the computer.

Please follow the steps below when using the VP-9059.



4-1 Connect the FireWire 1394 External Enclosure VP-9059 to Computer

Step1:

Plug the first 1394 port connector of the FireWire 1394 cable into the 1394 port of your Firewire 1394 External Enclosure VP-9059.

Step2:

Plug the second 1394 port connector of the FireWire 1394 cable into an 1394 port on your computer.

Step3:

Plug the power adapter power cord to the power inlet of your FireWire 1394 External Enclosure VP-9059. Turn the power of the VP-9059 ON.

Step4:

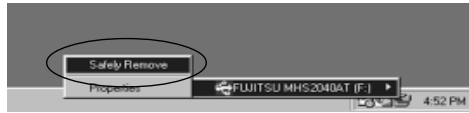
FireWire 1394 3.5" Portable External Enclosure VP-9059 is ready for use immediately.

4-2 Disconnect the FireWire 1394 External Enclosure VP-9059 from Computer

4-2.1 Windows 98:

Step1:

Double click the green Unplug or Eject hardware icon in system tray and click the drive that you want to remove and click on [STOP].



Step2:

When the system prompts 'Confirm device to be stopped', click [OK]. When the green arrow icon disappears, you may safely unplug the 1394 cable from the 1394 port of computer.

4-2.2 Windows Me/2000/XP

Step1:

Double-click on the [Unplug or Eject Hardware] icon in the system tray. A dialog box appears.



Step2:

Highlight the [IEEE 1394 Storage Device] in the dialog box, click [STOP]. Choose the FireWire 1394 External Enclosure VP-9059 that you want to disconnect, then click [STOP] again on the next screen.



Step3:

Wait a few seconds until the system prompts “You may safely remove this device”. Then, disconnect the FireWire 1394 External Drive from the computer.

4-2.3 Mac OS 10.1X or Above

When disconnecting your FireWire 1394 External Drive from a Mac computer, first close all windows and quit all running applications that are stored on the FireWire 1394 External Drive. Next, drag the FireWire 1394 External Drive’s icon into the “Trash” to dismount it from the Desktop. You can now safely disconnect the FireWire 1394 External Drive from the 1394 port.



CAUTION!!

Do not unplug the FireWire 1394 External Drive from the 1394 port of your computer or HUB while copying files to/ from the device or while files or applications stored on the FireWire 1394 External Drive are in use.

DOING SO MAY RESULT IN LOSS OF DATA.





5. Partitioning the External Hard Disk

5-1 Partition Under Windows 98/ME

Boot-up the computer into Windows 98/ME. Next, connect your external Hard Disk Drive to the 1394 port.

There are two methods to partition and format your external Hard Disk Drive.

Method 1

Step1:

Click on [Start], select [Control Panel] in [Settings], double click [System] and open [Hard disk controllers].

Step2:

You should see the external Hard Disk you just added. Highlight the external Hard Disk and choose [Properties], select [Settings]. Set the external Hard Disk to [Removable].

Step3:

After restarting the system, a removable HDD is added to [My Computer]. Choose the removable HDD and right click button of mouse. Select [Format] to format your external Hard Disk Drive.

You can only set the external Hard Disk Drive to one partition using this method.

Method 2

Step1:

Go into MS-DOS mode by clicking on [Start], then choose the [MS-DOS Prompt] in [Programs].

Step2:

At the DOS prompt, type [FDISK] and press Enter.

Step3:

If FDISK quits without any message, go back to the Windows 98 screen, disconnect the external Hard Disk and re-boot the computer. Reconnect the external HDD and go back to Step 1 to proceed.

Step4:

For the first screen of FDISK, answer the question:

Do you want to enable large disk support?

[Y] if you want to build a partition larger than 2GB.

[N] if you want to build a partition small than 2GB.

Step5:

The next screen is [FDISK OPTIONS]. Type [5] to select the disk.



Important:

You must type [5] in this screen to change the current fixed disk drive to build a partition. The default fixed drive set by FDISK is your internal hard disk drive.

WARNING!!

If you don't change the fixed disk drive to the external Hard Disk, the data of your internal hard disk will be destroyed!

Step6:

In the [Change Current Fixed Disk Drive], type the disk drive number that is assigned to the external Hard Disk.

Step7:

Go back to [FDISK OPTIONS] screen, Now you can create or delete a partition of the external Hard Disk.

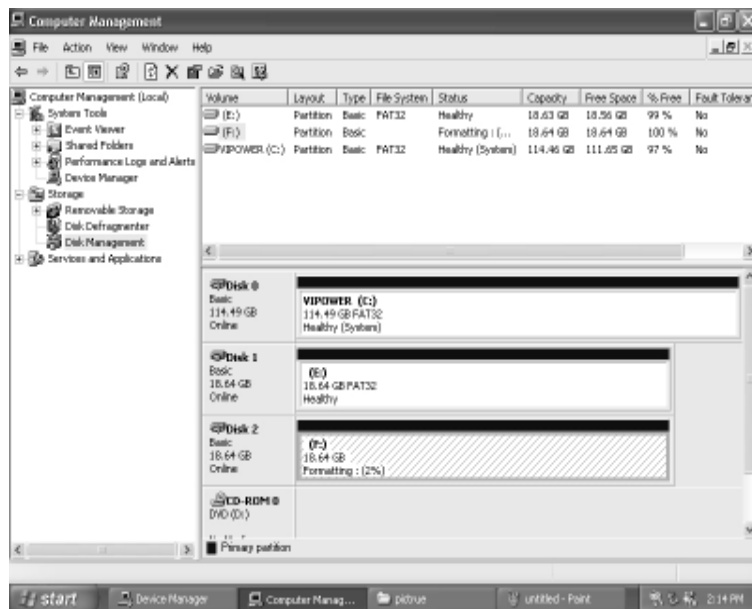
Step8:

After you finish FDISK, go back to the Windows screen, disconnect and then reconnect the external Hard Disk again to activate these changes. Double click on [My Computer]. The external Hard Disk Drive icon that you have now partitioned should be seen.

5-2 Partition under Windows 2000/XP

Step1:

To partition the external Hard Disk Drive under Windows 2000, connect the external Hard Disk to the 1394 port on your computer. Next, click [Start], select [Control Panel], [Settings], open [Administrative Tools] and double click [Computer Management].

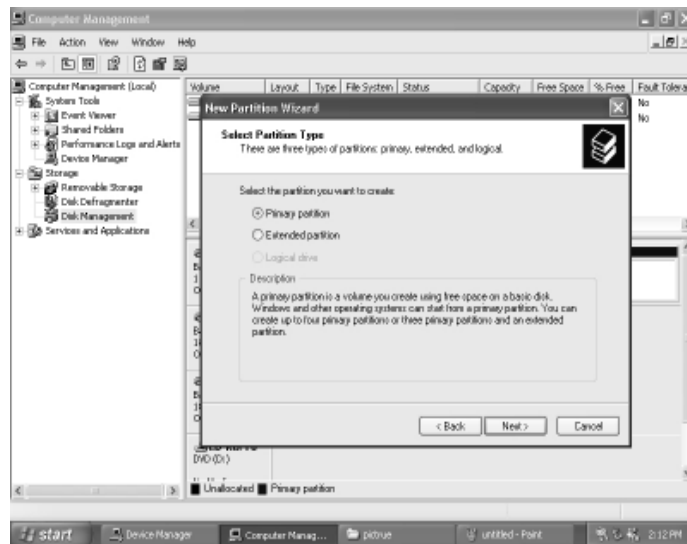


Step2:

Click on [Disk Management]. All connected disk drives will be listed. Find the external Hard Disk that you added and to the right of the disk, view the status of the partitions of this disk drive. You can create a new or delete an existing partition by right-clicking on this area.

Step3:

Right-click on the partition status area of the external Hard Disk Drive. Click on [Create Partition...], and the "Create partition wizard" will appear.



Step4:

Follow the instructions of the wizard to partition and format your external Hard Disk Drive.

After you have completed the partitioning and formatting of the external Hard Disk Drive, you can write data to it.