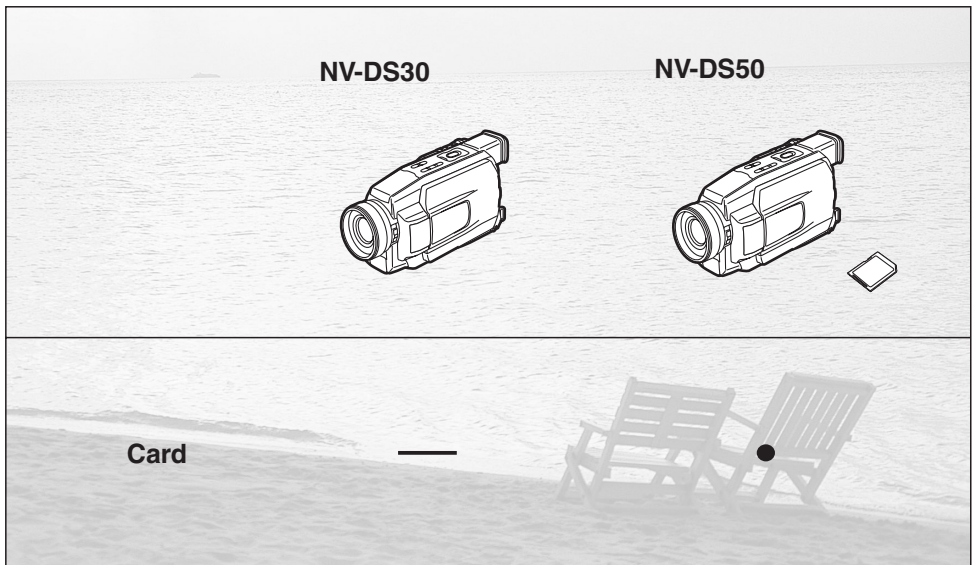


Panasonic

Digital Video Camera Operating Instructions

Model No. **NV-DS30A**
NV-DS50A



Before use, please read these instructions completely.

Before Use

Information for Your Safety

Movie Camera

- The rating plate is on the underside of the Movie Camera.

AC Adaptor

- The rating plate is on the underside of the AC Adaptor.
- As this equipment gets hot during use, operate it in a well-ventilated place; do not install this equipment in a confined space such as a bookcase or similar unit.

To reduce the risk of fire, electric shock or product damage, do not expose this equipment to rain, moisture, dripping or splashing and ensure that no objects filled with liquids, such as vases, shall be placed on the equipment.

■ Carefully read the Operating Instructions and use the Movie Camera correctly.

- Injury or material damage resulting from any kind of use that is not in accordance with the operating procedures explained in these Operating Instructions are the sole responsibility of the user.

Operating Instructions

- These Operating Instructions apply to models NV-DS30 and NV-DS50.
- The illustrations used in these Operating Instructions show model NV-DS50, however, parts of the explanation refer to different models.
- Depending on the model, some functions are not available.

Try out the Movie Camera.

Be sure to try out the Movie Camera before recording your first important event and check that it records properly and functions correctly.

The manufacturer is not liable for loss of recorded contents.

The manufacturer shall in no event be liable for the loss of recordings due to malfunction or defect of this Movie Camera, its accessories or cassettes.

Carefully observe copyright laws.

Recording of pre-recorded tapes or discs or other published or broadcast material for purposes other than your own private use may infringe copyright laws. Even for the purpose of private use, recording of certain material may be restricted.

- SD Logo is a trademark.
- All other company and product names in the operating instructions are trademarks or registered trademarks of their respective corporations.

Still pictures recorded on a MultiMediaCard or SD Memory Card (NV-DS50 only)

It may not be possible to play back the pictures on this Movie Camera recorded on and created by other equipment or vice versa. For this reason, check the compatibility of the equipment in advance.

Pages for reference

Pages for reference are indicated with an arrow, for example:

(→ 00)

■ WARNING

To reduce the risk of fire or shock hazard and annoying interference, use only the recommended accessories and do not expose this equipment to rain or moisture. Do not remove the cover (or back); there are no user serviceable parts inside. Refer servicing to qualified service personnel.

IF THE POWER CORD OF THIS EQUIPMENT IS DAMAGED, IT MUST BE REPLACED WITH AN ELECTRICALLY APPROVED POWER CORD.

Use only the recommended accessories.

Contents

Before Use

| | |
|-------------------------------------------------------|----|
| Information for Your Safety | 2 |
| Contents | 3 |
| Standard Accessories | 4 |
| Optional Accessories | 4 |
| Getting Started | 5 |
| Controls and Components | 6 |
| Remote Controller | 8 |
| Power Supply | 10 |
| Charging Time and Available Recording Time | 11 |
| Lens Cap and Grip Belt | 11 |
| Attaching the Shoulder Strap | 12 |
| Inserting a Cassette | 12 |
| Turning on the Movie Camera and Selecting Modes | 12 |
| Using the Viewfinder/LCD Monitor | 13 |
| Using the Menu Screen | 14 |
| List of Menus | 15 |
| Setting Date and Time | 17 |
| Internal Lithium Battery Recharge | 17 |

CAMERA Mode

| | |
|----------------------------------------|----|
| Recording | 18 |
| Photoshot | 20 |
| Zoom In/Out Functions | 21 |
| Digital Zoom Function | 21 |
| Image Stabilizer Function | 22 |
| Fade In/Out Functions | 22 |
| Cinema Function | 23 |
| 0 Lux Night View Function | 23 |
| Backlight Compensation Function | 23 |
| Recording in Special Situations | 24 |
| Wind Noise Reduction Function | 24 |
| Recording in Natural Colours | 25 |
| Adjusting White Balance Manually | 25 |
| Manual Shutter Speed Adjustment | 26 |
| Manual Iris Adjustment | 27 |
| Manual Focus Adjustment | 27 |
| Digital Effect Functions | 28 |

VCR Mode

| | |
|-------------------------------------------------|----|
| Playing Back | 30 |
| Finding a Scene You Want to Play Back | 31 |
| Slow Motion Playback | 31 |
| Still Playback/Still Advance Playback | 32 |
| Finding the End of Recording | 32 |
| Index Search Functions | 33 |
| Playback Digital Effect Functions | 34 |
| Playing Back on Your TV | 35 |
| Audio Dubbing | 35 |
| Copying on an S-VHS (or a VHS) Cassette | 36 |
| Recording the Contents of Other Equipment | 36 |
| Using the DV Cable for Recording | 37 |
| Personal Computer Connection Kit | 37 |

CARD Mode

| | |
|------------------------------------------------|----|
| Using a Card | 38 |
| Recording on a Card | 39 |
| Playing Back a Card | 40 |
| Recording with a Photo Title | 41 |
| Deleting the Pictures Recorded on a Card | 42 |
| Writing Printing Data on a Card | 43 |
| Using the USB Connection Kit | 43 |

Others

| | |
|---------------------------------------------------------|----|
| Indications | 44 |
| Warning/Alarm Indications | 45 |
| Notes and Hints | 46 |
| Cautions for Use | 50 |
| Before Requesting Repair (Problems and Solutions) | 54 |
| Explanation of Terms | 55 |
| Specifications | 58 |
| Index | 59 |

Before Use

CAMERA

VCR

CARD

Others

Standard Accessories

Illustrated on the left are accessories supplied with the Movie Camera.

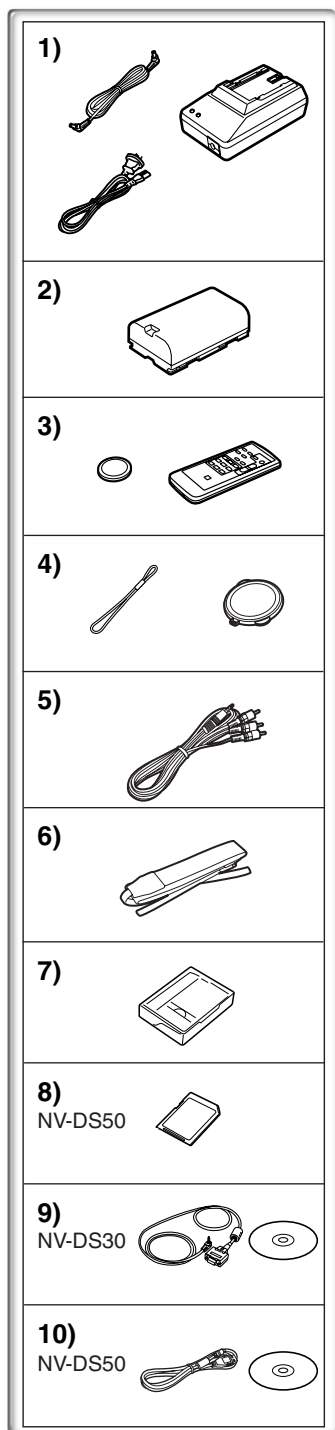
- 1) AC Adaptor, DC Input Lead and AC Mains Lead (→ 10)
- 2) Battery Pack (→ 10)
- 3) Remote Controller and Button-Type Battery (→ 8, 9)
- 4) Lens Cap (→ 11)
- 5) AV Cable (→ 35, 36)
- 6) Shoulder Strap (→ 12)
- 7) Digital Video Head Cleaner (→ 52)
- 8) SD Memory Card (NV-DS50 only) (→ 38)
- 9) Personal Computer Connection Kit (NV-DS30 only) (→ 37)
- 10) USB Connection Kit (NV-DS50 only) (→ 43)

Optional Accessories

- 1) AC Adaptor (VW-AD9A)
- 2) Battery Pack (Lithium/CGR-D08S/CGR-D120/800mAh)
- 3) Battery Pack (Lithium/CGP-D14S/CGP-D210/1400mAh)
- 4) Battery Pack (Lithium/CGR-D16S/CGR-D220/1600mAh)
- 5) Battery Pack (Lithium/CGP-D28S/CGP-D320/2800mAh)
- 6) Battery Pack (Lithium/CGR-D53S/CGR-D815/5300mAh)
- 7) Battery Pack (Lithium/CGA-D54S/5400mAh)
- 8) Car Battery Charger (VW-KBD2E)
- 9) Filter Kit (VW-LF43WE)
- 10) Wide Conversion Lens (VW-LW4307ME)
- 11) Tele Conversion Lens (VW-LT4314ME)
- 12) Stereo Microphone (VW-VMS2E)
- 13) Shoe Adaptor (VW-SK11E)
- 14) Tripod (VZ-CT55E)
- 15) Personal Computer Connection Kit (VW-DTA10A/VW-DTA9E) (NV-DS30 only)
- 16) DV Editing Software with DV Interface Board (VW-DTM21E)
- 17) DV Editing Software with DV Interface Card (VW-DTM22E)
- 18) DV Editing Software (VW-DTM20E)
- 19) DV Cable (VW-CD1E)

The following is for the NV-DS50 model only.

- 20) MultiMediaCard (VW-MMC8E/VW-MMC16E)
 - 21) SD Memory Card (RP-SD008/RP-SD016/RP-SD032/RP-SD064)
 - 22) PC Card Adaptor for SD Memory Card (BN-SDABPE)
 - 23) USB Reader Writer for SD Memory Card (BN-SDCAPE)
- Some optional accessories may not be available in some countries.



Getting Started

1 Charge the Battery. (→ 10)

- Attach the Battery to the AC Adaptor.
- Connect the AC Mains Lead. (Charging starts.)
- When the Charge Lamp [CHARGE] goes off, the Battery is fully charged.

2 Attach the Charged Battery to the Movie Camera.

3 Insert the Cassette. (→ 12)

- Slide the **1** Lever to open.
- Insert the Cassette.
- Press the **2** Button to close the Cover.

4 Turn the Movie Camera on and start recording.
(→ 12, 18)

- Set the **3** Switch to [CAMERA]. (The [POWER] Lamp lights up.)
- Press the **4** Button. (Recording starts.)
- Press the **4** Button again to pause the recording.

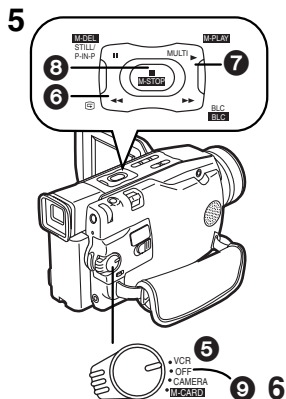
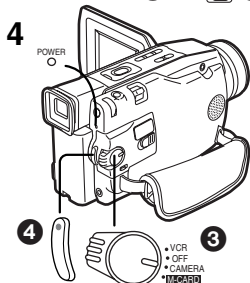
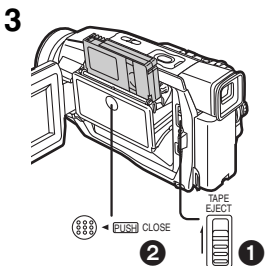
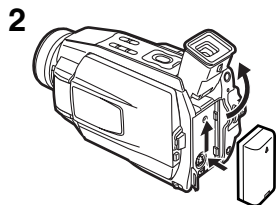
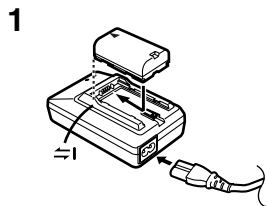
Viewing What Has Been Recorded

5 Switch to the VCR Mode, rewind the tape, and play the tape back. (→ 30)

- Set the **5** Switch to [VCR].
- Press the **6** Button. (Rewind the tape.)
- Press the **7** Button. (Playback starts.)
- Press the **8** Button. (Playback stops.)

6 Turn the Movie Camera off. (→ 12)

- Set the ⑨ Switch to [OFF].

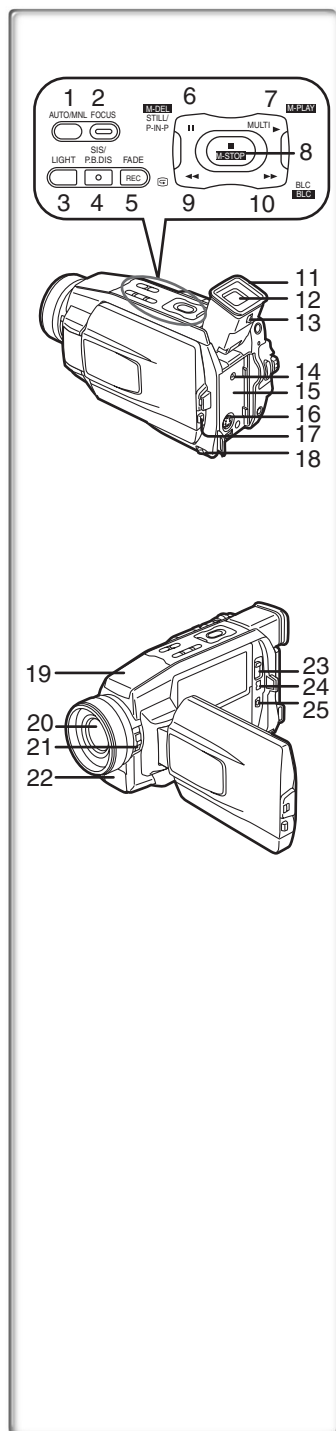


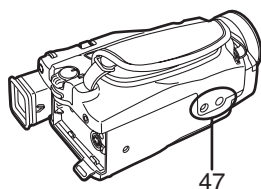
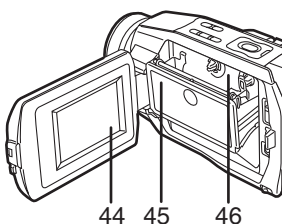
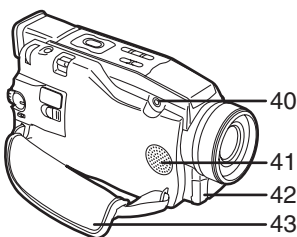
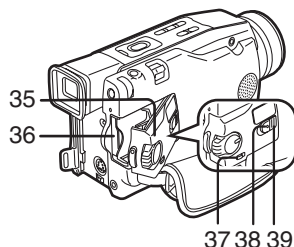
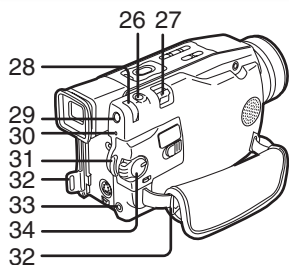
Controls and Components

- 1) Mode Selector Button [AUTO/MNL] (→ 18, 25, 26, 27)
- 2) Focus Button [FOCUS] (→ 27)
- 3) Video Light Button [LIGHT] (→ 19)
- 4) Super Image Stabilizer Button [SIS] (→ 22)
- 5) Playback Digital Image Stabilizer Button [P.B.DIS] (→ 30)
- 6) Fade Button [FADE] (→ 22)
- 7) Recording Button [REC] (→ 36, 37)
- 8) Still Button [STILL] (→ 20, 29)
- 9) Picture in Picture Button [P-IN-P] (→ 29)
- 10) Pause Button [II] (→ 32)
- Memory Card Data Delete Button [M-DEL] (NV-DS50 only) (→ 42)
- 11) Play Button [▶] (→ 30)
- 12) Playback Multi Button [MULTI] (→ 30)
- 13) Memory Card Play Button [M-PLAY] (NV-DS50 only) (→ 40)
- 8) Stop Button [■] (→ 30)
- Memory Card Stop Button [M-STOP] (NV-DS50 only) (→ 40)
- 9) Recording Check Button [Ⓢ] (→ 18)
- Rewind/Review Button [◀◀] (→ 30, 31)
- 10) Backlight Button [BLC] (→ 23, 39)
- Fast Forward/Cue Button [▶▶] (→ 31)
- 11) Eyecup
- 12) Viewfinder (→ 13, 53)

• Due to limitations in LCD production technology, there may be some tiny bright or dark spots on the Viewfinder screen. However, this is not a malfunction and does not affect the recorded picture.

- 13) Eyepiece Corrector Knob (→ 13)
- 14) DC Input Socket [DC IN] (→ 10)
- 15) Battery Holder
- 16) S-Video Input/Output Socket [S-VIDEO] (→ 35, 36)
- 17) LCD Monitor Open Button [PUSH OPEN] (→ 13)
- 18) Battery Release Lever [BATT RELEASE] (→ 10)
- 19) Microphone (built-in, stereo) (→ 21)
- 20) Lens
- 21) 0-Lux Recording Switch [0 LUX ON/OFF] (→ 23)
- 22) Built-in Video Light (→ 19)
- 23) Cassette Eject Lever [TAPE EJECT] (→ 12)
- 24) DV Terminal (→ 37)
- Connect this to the digital video equipment.
- 25) Digital Still Picture Terminal [TO PC] (NV-DS30 only) (→ 37)
- USB Socket [TO PC] (NV-DS50 only) (→ 43)





- 26) Photoshot Button [PHOTOSHOT] (→ 20, 39)
 27) Zoom Lever [W/T] (→ 21)
 Volume Lever [VOLUME] (→ 30)
 28) Multi-Function Dial [PUSH] (→ 14, 25, 26, 27)
 29) Menu Button [MENU] (→ 14)
 30) Power Lamp [POWER] (→ 18, 30, 39)
 31) Recording Start/Stop Button (→ 18)
 32) Shoulder Strap Holders (→ 12)
 33) Audio-Video Input/Output Socket [A/V IN/OUT] (→ 35, 36)
 Headphone Socket [PHONES] (→ 48)
 • Connecting an AV Cable to this socket activates the Movie Camera's built-in speaker, but connecting a headphone, etc. deactivates it.
 34) Off/On Mode Selector Switch [VCR/OFF/CAMERA/M-CARD] ([M-CARD] NV-DS50 only) (→ 12, 18, 30, 39, 50)
 35) Card Slot Cover (NV-DS50 only) (→ 38)
 36) Card Slot (NV-DS50 only) (→ 38)
 37) Card Lock Switch [LOCK] (NV-DS50 only) (→ 39, 40)
 • When you want to record in Camera Mode, setting to lock prevents the [VCR/OFF/CAMERA/M-CARD] Switch to be set to [M-CARD] by accident.
 38) Card Access Lamp [ACCESS] (NV-DS50 only) (→ 38)
 39) Card Slot Cover Open Lever [OPEN] (NV-DS50 only) (→ 38)
 40) Microphone Socket [EXT MIC]
 • Connect with an external microphone or audio equipment. (When this socket is in use, the built-in microphone does not operate.)
 41) Speaker (→ 30)
 42) Remote Control Sensor (→ 9)
 Built-in Infra-red Beam Emitters (→ 23)
 43) Grip Belt (→ 11)
 44) LCD Monitor (→ 13, 53)

• Due to limitations in LCD production technology, there may be some tiny bright or dark spots on the LCD Monitor screen. However, this is not a malfunction and does not affect the recorded picture.

- 45) Cassette Compartment Cover (→ 12)
 46) Cassette Holder (→ 12)
 47) Tripod Receptacle
 • Used for mounting the Movie Camera on an optional tripod.

Remote Controller

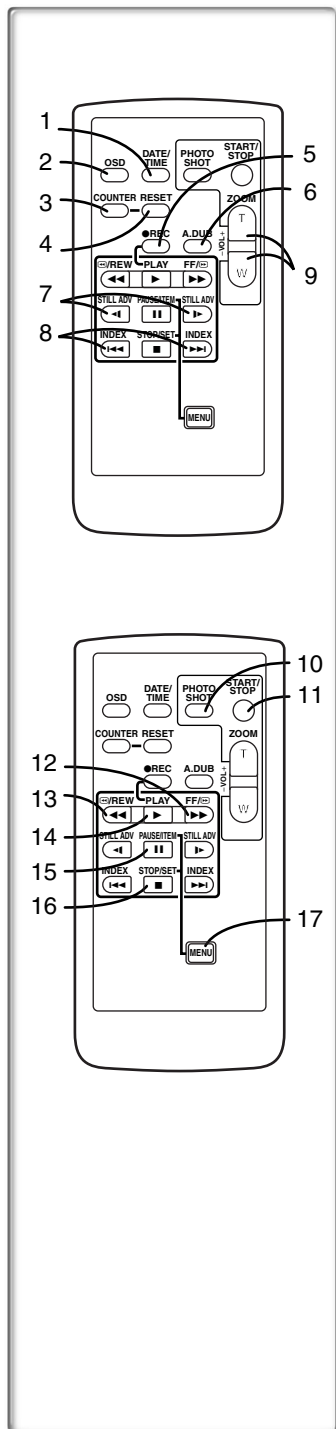
Using the wireless Remote Controller that is supplied with the Movie Camera, most of the Movie Camera functions can be operated from a distance.

Remote Controller Buttons

- 1) Date/Time Button [DATE/TIME] (→ 45)
- 2) Indication Output Button [OSD] (→ 35)
- 3) Counter Indication Shift Button [COUNTER] (→ 45)
- 4) Reset Button [RESET] (→ 56)
- 5) Recording Button [REC] (→ 36, 37)
- 6) Audio Dubbing Button [A.DUB] (→ 35)
- 7) Slow Motion/Still Advance Buttons
[◀, ▶] (◀: reverse, ▶: forward) (→ 31)
- 8) Index Search Buttons
[◀◀, ▶▶] (◀◀:reverse, ▶▶:forward) (→ 33)
- 9) Zoom/Volume Button [ZOOM/VOL] (→ 21, 30)

The following buttons function in the same manner as the corresponding buttons on the Movie Camera.

- 10) Photoshot Button [PHOTOSHOT] (→ 20, 39)
- 11) Recording Start/Stop Button [START/STOP] (→ 18)
- 12) Fast-forward/Cue Button [▶▶] (→ 31)
- 13) Rewind/Review Button [◀◀] (→ 30, 31)
- 14) Play Button [▶] (→ 30)
- 15) Pause Button [||] (→ 32)
- Item Button [ITEM] (→ 14)
- 16) Stop Button [■] (→ 30)
- Set Button [SET] (→ 14)
- 17) Menu Button [MENU] (→ 14)



■ Inserting a Button-type Battery

Before using the Remote Controller, insert the supplied button-type battery.

- 1 While pressing the Stopper ①, pull out the Battery Holder.
- 2 Insert the button-type battery with the imprint (+) facing upward.
- 3 Insert the Battery Holder into the Remote Controller.

- When the button-type battery is weak, replace it with a new CR2025 battery. (A battery is normally expected to last about 1 year. However, it depends on operation frequency.)
- Make sure to match the poles correctly when inserting the battery.

CAUTION

Danger of explosion if battery is incorrectly replaced. Replace only with the same or equivalent type recommended by the equipment manufacturer. Discard used batteries according to manufacturer's instructions.

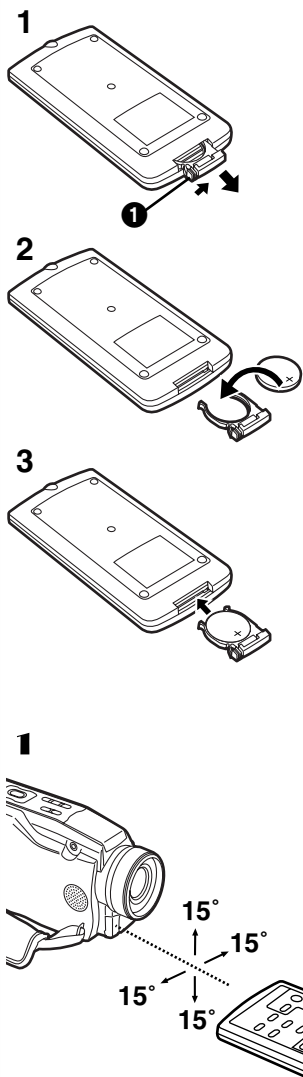
WARNING

Risk of fire, explosion and burns. Do not recharge, disassemble, heat above 100°C or incinerate. Keep the Button-Type battery out of the reach of children. Never put Button-Type battery in mouth. If swallowed call your doctor.

■ Using the Remote Controller

- 1 Direct the Remote Controller to the Remote Control Sensor of the Movie Camera and press an appropriate button.

- Distance from the Movie Camera: Within approximately 5 metres
- Angle: Within approximately 15° in the vertical and horizontal directions from the central axis
- The above operating ranges are for indoor use. Outdoors or under strong light, the Movie Camera may not operate properly even within the above ranges.
- For other notes concerning this item, see page 46.



Power Supply

■ Using the AC Adaptor

- 1 Connect the DC Input Lead to the [DC IN] Socket on the Movie Camera.
- 2 Connect the DC Input Lead to the AC Adaptor.
- 3 Connect the AC Mains Lead to the AC Adaptor and the AC mains socket.

- The AC Mains Lead's outlet plug cannot be pushed fully into the AC Adaptor socket. A gap will remain as shown ①.

- Before connecting or disconnecting the power supply, set the [VCR/OFF/CAMERA/M-CARD] Switch on the Movie Camera to [OFF] and make sure that the [POWER] Lamp is not lit.

■ Using the Battery

Before use, fully charge the Battery.

- 1 Attach the Battery to AC Adaptor and charge it.

- Since the Battery will not be charged when the DC Input Lead is connected to the AC Adaptor, disconnect them.

- The [POWER] Lamp and [CHARGE] Lamp lights up, and charging starts.

- When the [CHARGE] Lamp goes off, charging is completed.

- 2 Attach the charged Battery to the Movie Camera.

To Remove the Battery

Set the [VCR/OFF/CAMERA/M-CARD] Switch ② to [OFF], and while pressing the [BATT RELEASE] Lever ③, slide the Battery to remove it.

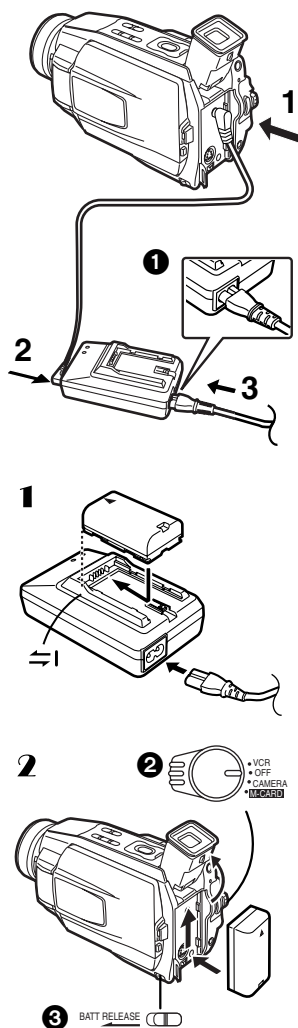
- When attaching or removing Battery, set the [VCR/OFF/CAMERA/M-CARD] Switch to [OFF] and make sure the [POWER] Lamp is not lit.

■ Using the Car Battery Charger

If you use the Car Battery Charger (VW-KBD2E; optional), you can supply power to the Movie Camera and charge the battery inside your car. For further information, refer to the instruction manual of the Car Battery Charger.

- Be sure to start the car engine before you connect the Car Adaptor Cord, otherwise the fuse may blow.

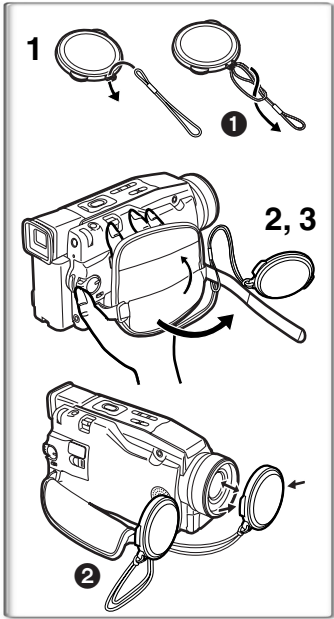
- For other notes concerning this item, see page 46.



Charging Time and Available Recording Time

| | | NV-DS30 | NV-DS50 |
|----------|-----|---------------------|---------------------|
| CGR-D08R | (A) | 1h | 1h |
| CGR-D08S | (B) | 1h55min.(1h20min.) | 1h45min.(1h10min.) |
| CGR-D120 | (C) | 1h(40min.) | 55min.(35min.) |
| CGP-D14S | (A) | 1h50min. | 1h50min. |
| CGP-D210 | (B) | 3h15min.(2h10min.) | 2h55min.(2h) |
| | (C) | 1h40min.(1h5min.) | 1h30min.(1h) |
| CGR-D16S | (A) | 2h | 2h |
| CGR-D220 | (B) | 3h50min.(2h35min.) | 3h30min.(2h20min.) |
| | (C) | 1h55min.(1h20min.) | 1h45min.(1h10min.) |
| CGP-D28S | (A) | 3h15min. | 3h15min. |
| CGP-D320 | (B) | 6h40min.(4h30min.) | 6h(4h5min.) |
| | (C) | 3h20min.(2h15min.) | 3h(2h5min.) |
| CGA-D54S | (A) | 5h30min. | 5h30min. |
| | (B) | 12h55min.(8h40min.) | 11h40min.(7h55min.) |
| | (C) | 6h30min.(4h20min.) | 5h50min.(4h) |

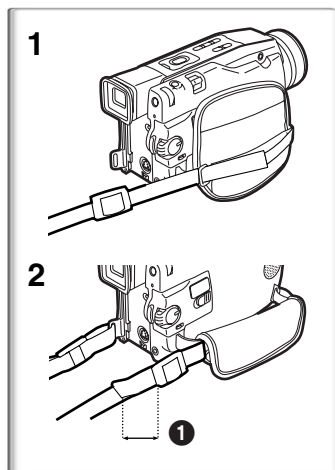
- (A) Charging Time
(B) Maximum Continuous Recording Time
(C) Intermittent Recording Time
(Intermittent Recording Time is the available recording time with repeated recording and stopping actions.)
- “1h10min.” indicates 1 hour and 10 minutes.
 - Battery CGR-D08R is supplied.
 - The times shown in the table are approximate times. The numbers in parentheses indicate the recording time when the LCD Monitor is used. In actual use, the available recording time may be shorter.
 - The times shown in the table are for continuous recording at a temperature of 20°C and humidity of 60%. If the Battery is charged at a higher or lower temperature, the charging time may be longer.



~~~~~ Lens Cap and Grip Belt

To protect the Lens surface, attach the Lens Cap. Adjust the length of the Grip Belt to the size of your hand.

- 1 Pass the Lens Cap Cord through the attached eye on the Lens Cap and thread it as shown in the illustration ①.
 - 2 Attach the Lens Cap to the Grip Belt.
 - 3 Put your hand through the Grip Belt and adjust the length.
- The removed Lens Cap can be hooked on to the Grip Belt ②.
 - When you remove the Lens Cap, press the knobs firmly.
 - When you are not recording, be sure to keep the Lens Cap attached to the Lens for protection.

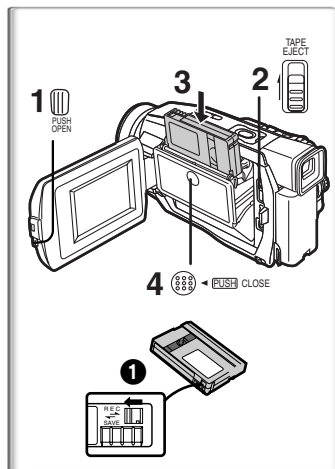


Attaching the Shoulder Strap

We recommend that you attach the Shoulder Strap before going out of doors to record so as to avoid dropping the Movie Camera.

- 1 Pull the end of the Shoulder Strap through the Shoulder Strap Holder on the Movie Camera.
- 2 Fold the tip of the Shoulder Strap, run it through the Shoulder Strap Length Adjuster, and pull it.

- Pull it out more than 2 cm (1) from the Shoulder Strap Length Adjuster so that it cannot slip off.



Inserting a Cassette

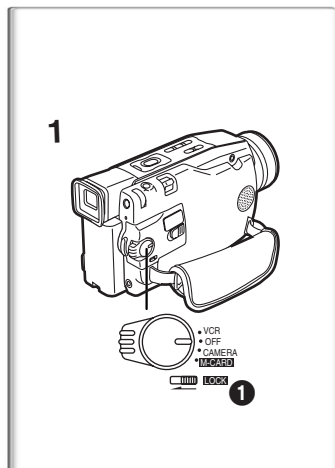
When power is supplied to the Movie Camera, the Cassette can be taken out without turning the Movie Camera [ON].

- 1 Press [PUSH OPEN] Button and open the LCD Monitor.
- 2 Slide the [TAPE EJECT] Lever to open the Cover.
- 3 Insert a Cassette.
- 4 Close the Cover and press the [PUSH CLOSE] mark to lock the Cover.

Accidental Erasure Prevention

Opening the accidental erasure prevention slider (1) on the cassette (by sliding it in the [SAVE] arrow direction) prevents recording. To enable recording, close the accidental erasure prevention slider (by sliding it in the [REC] arrow direction).

- For other notes concerning this item, see page 46.



Turning on the Movie Camera and Selecting Modes

- 1 Set the [VCR/OFF/CAMERA/M-CARD] Switch to [CAMERA], [VCR] or [M-CARD]. ([M-CARD]: NV-DS50 only)

- The [POWER] Lamp lights up.

CAMERA: Camera Mode

VCR: VCR Mode

M-CARD: Card Recording Mode

Card Playback Mode (To this mode, press the [M-PLAY] Button in the Card Recording Mode)

- If the Card Lock Switch (1) is set to lock, the [VCR/OFF/CAMERA/M-CARD] Switch cannot be set to [M-CARD]. (NV-DS50 only)

To Turn off the Power

Set the [VCR/OFF/CAMERA/M-CARD] Switch to [OFF].

Using the Viewfinder/LCD Monitor

■ Using the Viewfinder

Before using the Viewfinder, adjust the field of view so that the displays inside the Viewfinder become clear and easy to read.

- 1 Tilt the Viewfinder upward.
- 2 Adjust by sliding the Eyepiece Corrector Knob **1**.

■ Using the LCD Monitor

With the LCD Monitor open, you can also record the picture while watching it.

- 1 Press the [PUSH OPEN] Button and, at the same time, bring the LCD Monitor out about 90° in the direction of the arrow.**
 - The Viewfinder goes off.
- 2 Adjust the LCD Monitor angle according to the desired recording angle.**
 - The LCD Monitor can rotate a maximum of 180° **2** from the vertical position to the upward direction and a maximum of 90° **3** to the downward direction. Forcefully rotating the LCD Monitor beyond these ranges will damage the Movie Camera.

Closing the LCD Monitor

Push the LCD Monitor until it is securely locked.

■ Adjusting Brightness and Colour Level

When [LCD/EVF SETUP] on the [CAMERA FUNCTIONS] or [VCR FUNCTIONS] Main-Menu is selected, the following items are displayed. (→ 14)

LCD Brightness [LCD BRIGHTNESS]

It adjusts the brightness of the image on the LCD screen.

LCD Colour Level [LCD COLOUR]

It adjusts the colour saturation of the image on the LCD screen.

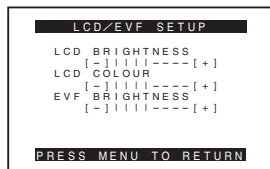
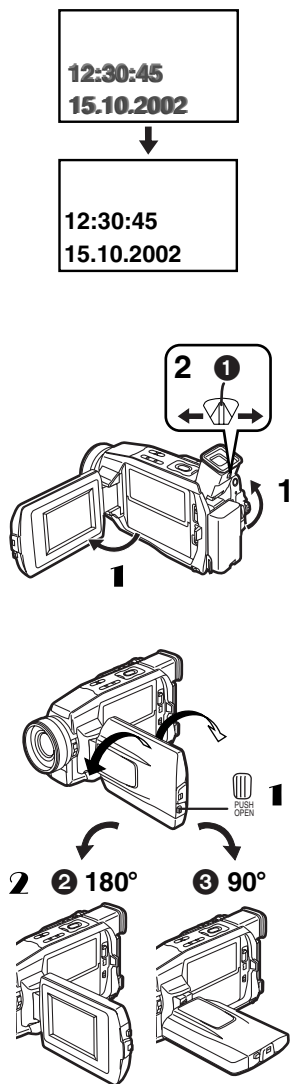
Brightness of the Viewfinder [EVF BRIGHTNESS]

It adjusts the brightness of the image in the Viewfinder.

To Adjust

Press the [PUSH] Dial and select the item to be adjusted, and then turn the [PUSH] Dial to raise or lower the number of vertical bars in the Bar Indication.

- A larger number of vertical bars indicates stronger brightness or colour saturation.
- For other notes concerning this item, see page 53.



Using the Menu Screen

To facilitate the selection of a desired function or setup, this Movie Camera displays various function setups on Menus.

1 Press the [MENU] Button.

- The Menu corresponding to the Mode selected by using the [VCR/OFF/CAMERA/M-CARD] Switch ① is displayed.

2 Turn the [PUSH] Dial to select a desired Sub-Menu.

- Turn the [PUSH] Dial to display the highlighted item.

3 Press the [PUSH] Dial to display the selected Sub-Menu.

4 Turn the [PUSH] Dial to select the item to be set.

5 Press the [PUSH] Dial to set the selected item to a desired mode.

- With each pressing of the [PUSH] Dial, the cursor [▶] moves to the next mode.

- While a Menu is displayed, you cannot record or play back. Menus can be displayed during playback but not during recording. The above operations can be done using the [MENU] Button, [SET] Button and [ITEM] Button on the Remote Controller. (→ 8)

To Exit the Menu Screen

Press the [MENU] Button again.

About the Menu Mode Setting

The setting selected on the Menu will be retained even when the Movie Camera is turned off. However, if the Battery or AC Adaptor is disconnected before turning off the Movie Camera, the selected setup may not be retained.

- Menu operation flow is shown in this text by >>.

Image Selection (NV-DS50 only)

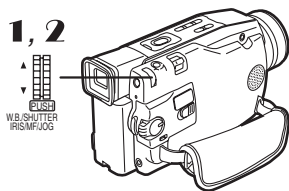
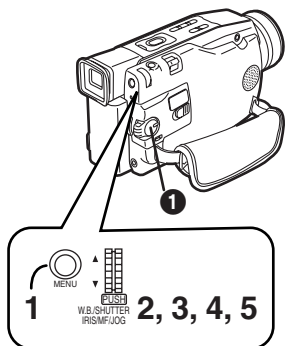
An Image Selection Operation may be necessary during Menu Operations. In this case, carry out the following procedure.

1 Turn the [PUSH] Dial and select a picture.

- The selected picture is underlined ②.

2 Press the [PUSH] Dial to confirm the selection of the picture.

- After the above Picture Selection Procedure, carry out the various Menu Operations. (The above procedure will not be repeated in the following instructions.)



List of Menus

The figures of the Menus are for explanation purposes only, and they are different from the actual Menus.

Camera Mode Main-Menu [CAMERA FUNCTIONS]

[CAMERA SETUP] Sub-Menu

- 1) Auto Exposure Mode [PROG.AE] (→ 24)
- 2) Progressive Photoshot Mode [PROGRESSIVE] (→ 20)
- 3) Digital Zoom [D.ZOOM] (→ 21)
- 4) Cinema-like Format Recording [CINEMA] (→ 23)
- 5) Returning to the Main-Menu [RETURN]

[DIGITAL EFFECT] Sub-Menu

- 6) Digital Effects [EFFECT] (→ 28)

[RECORDING SETUP] Sub-Menu

- 7) Recording Speed Mode [REC SPEED] (→ 19)
- 8) Audio Recording Mode [AUDIO REC] (→ 19)
- 9) Scene Index Mode [SCENEINDEX] (→ 33)
- 10) Wind Noise Reduction [WIND CUT] (→ 24)
- 11) Zoom Microphone [ZOOM MIC] (→ 21)

[DISPLAY SETUP] Sub-Menu

- 12) Date and Time Indication [DATE/TIME] (→ 45)
- 13) Counter Display Mode [C.DISPLAY] (→ 45)
- 14) Counter Reset [C.RESET] (→ 56)

● It resets the counter to zero. However, it cannot reset the Time Code.

- 15) Display Mode [DISPLAY] (→ 45)

[LCD/EVF SETUP] Sub-Menu

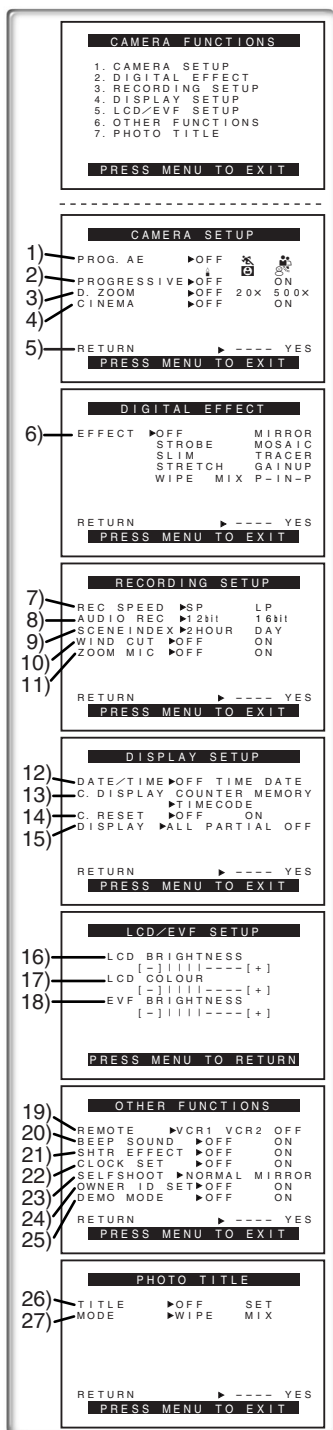
- 16) LCD Brightness [LCD BRIGHTNESS] (→ 13)
- 17) LCD Colour Level [LCD COLOUR] (→ 13)
- 18) Brightness of the Viewfinder [EVF BRIGHTNESS] (→ 13)

[OTHER FUNCTIONS] Sub-Menu

- 19) Remote Controller Mode [REMOTE] (→ 46)
- 20) Beep Sound [BEEP SOUND] (→ 46)
- 21) Shutter Effect [SHTR EFFECT] (→ 20)
- 22) Date and Time Setting [CLOCK SET] (→ 17)
- 23) Self-Recording [SELFSHOOT] (→ 19)
- 24) Owner ID Set [OWNER ID SET] (→ 57)
- 25) Demonstration Mode [DEMO MODE] (→ 57)

[PHOTO TITLE] Sub-Menu (NV-DS50 only)

- 26) Title In Setting [TITLE] (→ 41)
- 27) Title In Mode [MODE] (→ 41)



VCR FUNCTIONS

1. PLAYBACK FUNCTIONS
2. DIGITAL EFFECT
3. RECORDING SETUP
4. DISPLAY SETUP
5. LCD/EVF SETUP
6. OTHER FUNCTIONS

PRESS MENU TO EXIT

PLAYBACK FUNCTIONS

- 1) BLANK SEARCH OFF ON
- 2) SEARCH PHOTO SCENE
- 3) 12bit AUDIO ST1 ST2 MIX
- 4) MULTI SPEED FAST NORMAL SLOW
- 5) RETURN

PRESS MENU TO EXIT

DIGITAL EFFECT

- 6) EFFECT1 OFF MIRROR
- STROBE MOSAIC
- SLIM TRACER
- 7) EFFECT2 OFF SEPIA B/W
- 8) D. ZOOM OFF ON
- RETURN

PRESS MENU TO EXIT

RECORDING SETUP

- 9) REC SPEED SP LP
- 10) AUDIO DUB OFF ON
- 11) AUDIO REC 12bit 16bit
- 12) AV JACK IN OUT/PHONES
- RETURN

PRESS MENU TO EXIT

CARD SETUP

- 1) REC MODE 320x240 640x480

PRESS MENU TO EXIT

CARD SETUP

- 1) DISPLAY OFF ON
- 2) DCF NO. OFF ON
- 3) DPOF OFF ON

PRESS MENU TO EXIT

VCR Mode Main-Menu [VCR FUNCTIONS] [PLAYBACK FUNCTIONS] Sub-Menu

- 1) Blank Search [BLANK SEARCH] (→ 32)
- 2) Index Search Mode [SEARCH] (→ 33)
- 3) Audio Selector [12bit AUDIO] (→ 35)
- 4) Multi-Picture Mode [MULTI SPEED] (→ 30)
- 5) Returning to the Main-Menu [RETURN]

[DIGITAL EFFECT] Sub-Menu

- 6) Digital Effects 1 [EFFECT1] (→ 34)
- 7) Digital Effects 2 [EFFECT2] (→ 34)
- 8) Digital Zoom [D.ZOOM] (→ 34)

[RECORDING SETUP] Sub-Menu

- 9) Recording Speed Mode [REC SPEED] (→ 19)
- 10) Audio Dubbing [AUDIO DUB] (→ 35)
- 11) Audio Recording Mode [AUDIO REC] (→ 35)
- 12) AV Socket [AV JACK] (→ 36)

[DISPLAY SETUP] Sub-Menu

All of the items on the [DISPLAY SETUP] Sub-Menu are the same as those on the [DISPLAY SETUP] Sub-Menu of the [CAMERA FUNCTIONS] Main-Menu.

[LCD/EVF SETUP] Sub-Menu

All of the items on the [LCD/EVF SETUP] Sub-Menu are the same as those on the [LCD/EVF SETUP] Sub-Menu of the [CAMERA FUNCTIONS] Main-Menu.

[OTHER FUNCTIONS] Sub-Menu

All of the items on the [OTHER FUNCTIONS] Sub-Menu are the same as those on the [OTHER FUNCTIONS] Sub-Menu of the [CAMERA FUNCTIONS] Main-Menu.

Card Recording Mode Menu [CARD SETUP] (NV-DS50 only)

- 1) Picture Size [REC MODE] (→ 39)

Card Playback Mode Menu [CARD SETUP] (NV-DS50 only)

- 1) Indication Display [DISPLAY] (→ 40)
- 2) DCF Number [DCF NO.] (→ 40)
- 3) Setting DPOF [DPOF] (→ 43)

Setting Date and Time

Since the internal clock of the Movie Camera has a slight imprecision, make sure to check the time before recording.

- 1 Set [OTHER FUNCTIONS] >> [CLOCK SET] >> [ON].
- 2 Press the [PUSH] Dial to select [YEAR]/[MONTH]/[DAY]/[HOUR]/[MIN.] and turn to set it to a desired value.

- Year will cycle in the order shown below.

2000, 2001, ..., 2089, 1990, ...

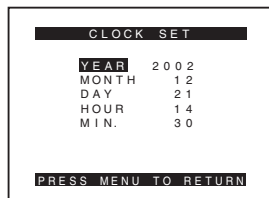
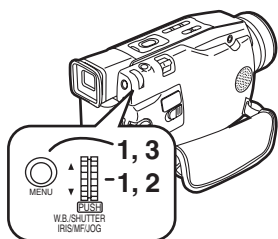
- 3 Press the [MENU] Button to finish setting the date and time.

- The clock operation starts from [00] second.

- The Menu will disappear when the [MENU] Button is pressed again.

- If the built-in battery is weak, the [⚡] Indication ❶ flashes. In this case, charge the built-in battery.

- The clock employs the 24-hour system.



❶

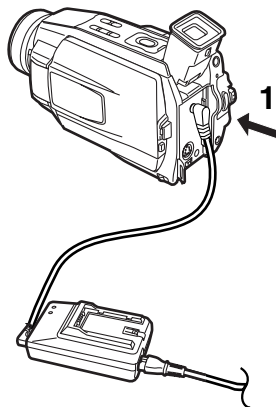


Internal Lithium Battery Recharge

- The internal lithium battery sustains the operation of the clock. When the [⚡] Indication flashes, the internal lithium battery is near exhaustion.

- 1 Connect the AC adaptor to the Movie Camera with the power turned off and then connect to the AC Mains socket.

- After charging for 4 hours, the built-in lithium battery can power the clock for approximately 3 months.



CAMERA Mode

Recording

When the [AUTO] Indication ❶ is displayed on the screen, the Movie Camera automatically adjust the focus and white balance. In some cases, they cannot be adjusted automatically and need to be adjusted manually. (→ 25, 27)

1 Set the [VCR/OFF/CAMERA/M-CARD] Switch to [CAMERA].

- The [POWER] Lamp lights up. ❷

2 Press the [AUTO/MNL] Button for about 1 second to display the [AUTO] Indication.

3 Press the Recording Start/Stop Button.

- Recording starts.
- After the [RECORD] is displayed, it changes to [REC]. ❸

■ To Pause the Recording

Press the Recording Start/Stop Button again.

The [PAUSE] Indication is displayed. ❹

- If the Recording Pause Mode continues for more than 6 minutes, the power is turned off automatically for tape protection and power conservation. To resume recording from this condition, turn on the power again.

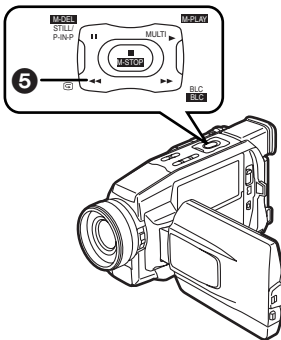
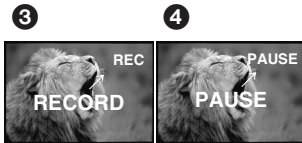
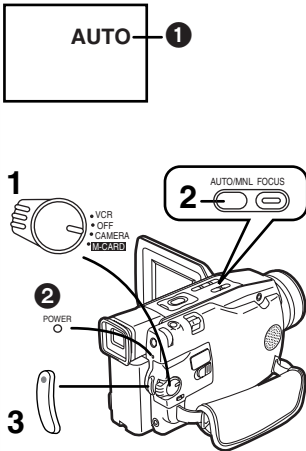
■ To Check the Recording

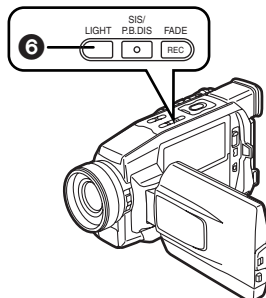
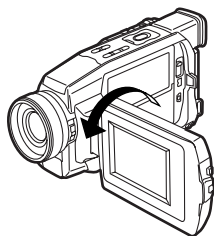
By pressing the [G] Button ❺ briefly in the Recording Pause Mode, you can play back the last few seconds of the recorded scene.

- The [CHK] Indication is displayed. After checking, the Movie Camera resumes the Recording Pause Mode.

■ To Finish the Recording

Set the [VCR/OFF/CAMERA/M-CARD] Switch to [OFF].





■ Recording Yourself

By opening the LCD Monitor and rotating it frontward (to the lens side), you can let the subject in front of the Movie Camera monitor the shot while recording is in progress.

- When the LCD Monitor is opened, the Viewfinder is disabled automatically. However, when the LCD Monitor is rotated frontward, the image is also shown in the Viewfinder.
- If you prefer to have the image on the LCD Monitor to look like an image in a mirror, set [SELF SHOOT] on the [OTHER FUNCTIONS] Sub-Menu to [MIRROR].
Images are recorded normally and no left and right reversal occurs.

■ Recording with the Built-in Video Light

By using the Built-in Video Light, you can record the scenes in the dark place.

- If you Press the [LIGHT] Button **6** for about 1 second, the Built-in Video Light lights. (The [D] Indication **7** is displayed.)
- To turn the Built-in Video Light off, press the [LIGHT] Button for about 1 second.
- The subject should be within 2 metres of the Movie Camera.

■ LP Mode

A desired recording speed can be selected with [REC SPEED] on the [RECORDING SETUP] Sub-Menu.

If LP Mode is selected, the recording time becomes 1.5 times longer than that of SP Mode.

Although the image quality does not decrease with the LP Mode recording, mosaic-pattern noise may appear on a playback image, or some normal functions may be restricted.

- The contents that are recorded in LP Mode are not completely compatible with other equipment.
- Audio dubbing is not possible with LP Mode. (→ 35)

■ Audio Recording Mode

The sound quality of the recorded sound can be selected with [AUDIO REC] on the [RECORDING SETUP] Sub-Menu. High sound-quality recording is possible with “16 bit 48 kHz 2 track” Mode. With the “12 bit 32 kHz 4 track” Mode, the original sound can be recorded on 2 tracks in stereo, while the other 2 tracks can be used for Audio Dubbing.

- For other notes concerning this item, see page 46.

Photoshot

This Movie Camera can take approximately 7 seconds still pictures containing sound.

1 Press the [PHOTOSHOT] Button in the Recording Pause Mode.

- The Movie Camera records a still picture for about 7 seconds and then switches back to the Recording Pause Mode.

Progressive Photoshot

With the Progressive Photoshot Function, you can record still pictures with higher resolution than with the normal Photoshot Function.

- When [PROGRESSIVE] on the [CAMERA SETUP] Sub-Menu is set to [ON], the [P] Indication ① is displayed. When the [P] Indication is displayed, press the [PHOTOSHOT] Button in the Recording Pause Mode.
- This function may not work with some function setups.

Continuous Photoshot

If the [PHOTOSHOT] Button continues to be pressed when the [SHTR EFFECT] on the [OTHER FUNCTIONS] Sub-Menu is set to [ON], the Movie Camera will continuously record still pictures in approximately 0.7 second intervals until the button is released. (However, this does not operate when using Progressive Photoshot.)

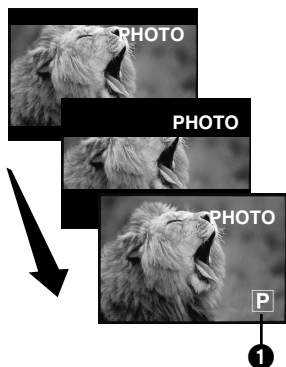
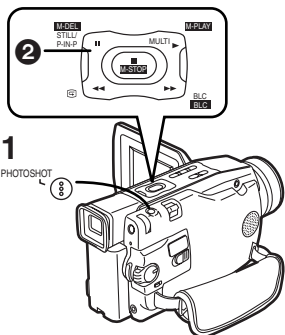
- The screen blinks and, at the same time, a shutter clicking sound is recorded.

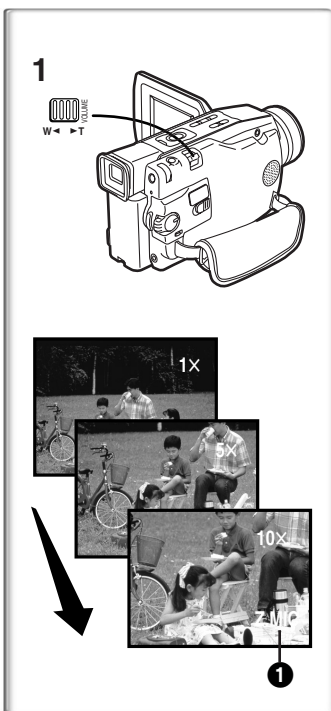
Digital Still Picture

When the [STILL] Button ② is pressed for about 1 second, images become still pictures. When the button is pressed again, the Digital Still Picture Mode is cancelled.

- We recommend that you press the [STILL] Button first at the position where you wish to record the picture so as to enter the Digital Still Picture Mode and then press the [PHOTOSHOT] Button.

- For other notes concerning this item, see page 46.





Zoom In/Out Functions

It gives special effects to the video by recording objects close by or with wide-angle shot.

1 For wide-angle shots (zoom out):

Push the [W/T] Zoom Lever towards [W].

For close-ups (zoom in):

Push the [W/T] Zoom Lever towards [T].

To Take Close-up Shots of Small Subjects

(Macro Close-up Function)

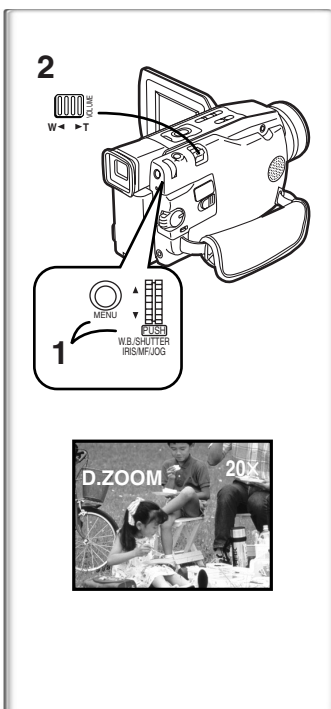
When the zoom magnification is 1×, the Movie Camera can focus on a subject that is as close as approximately 30 mm from the Lens. With this, small subjects like insects can be recorded.

To Use the Zoom Microphone Function

Along with the zooming operation, the microphone's directional angle and sensitivity are varied for recording sounds.

- Set [ZOOM MIC] on the [RECORDING SETUP] Sub-Menu to [ON]. (The [Z.MIC] Indication is displayed. ❶)
- The Zoom Microphone Function may not work effectively if the surrounding noise is too loud.

• For other notes concerning this item, see page 46.



Digital Zoom Function

This function is useful when you want to record close-up shots of subjects located beyond a normal zoom range of 1× to 10× magnification. With the Digital Zoom Function, you can select a magnification of 20× or even to 500×.

1 Set [CAMERA FUNCTIONS] >> [CAMERA SETUP] >> [D.ZOOM] >> [20×] or [500×].

- 20×: Digital zooming to 20×
- 500×: Digital zooming to 500×

2 Push the [W/T] Zoom Lever towards [W] or towards [T] to zoom in or out.

To Cancel the Digital Zoom Function

Set [D.ZOOM] on the [CAMERA SETUP] Sub-Menu to [OFF].

- As the magnification of digital zoom increases, the quality of image may deteriorate.
- White balance cannot be set in the digital zoom range.



Image Stabilizer Function

If the Movie Camera might be shaken while recording, the camera shake in the image can be corrected.

- If the Movie Camera shakes too much, this function may not be able to stabilize images.

1 Press the [SIS] Button.

- The [] Indication ① appears.

To Cancel Image Stabilizer

Press the [SIS] Button.

- For other notes concerning this item, see page 47.

Fade In/Out Functions

Fade In ①

Fade In brings out images and sounds gradually from a black screen at the beginning of a scene.

1 Keep pressing the [FADE] Button during the Recording Pause Mode.

- The image fades out gradually.

2 When the image is completely gone, press the Recording Start/Stop Button to start recording.

3 Release the [FADE] Button about 3 seconds after starting recording.

- The image reappears gradually.

Fade Out ②

Fade Out causes images and sounds to disappear gradually, leaving a black screen at the end of a scene.

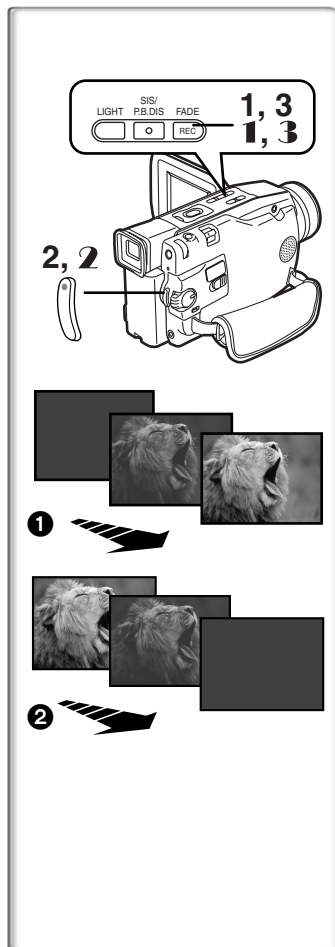
1 Keep pressing the [FADE] Button while recording.

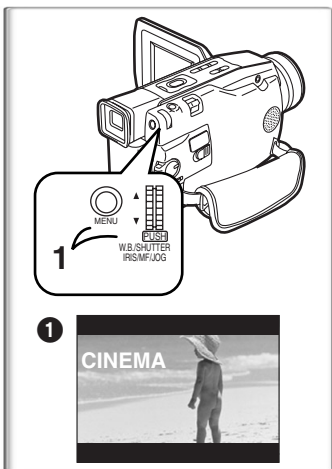
- The image fades out gradually.

2 When the image is completely gone, press the Recording Start/Stop Button to stop recording.

3 Release the [FADE] Button.

- The still picture cannot fade in or fade out.





Cinema Function

This function is for recording in a cinema-like wide screen.

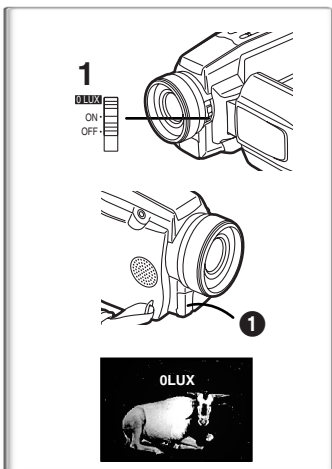
- 1 Set [CAMERA FUNCTIONS] >> [CAMERA SETUP] >> [CINEMA] >> [ON].

- Black bars appear at the top and bottom of the screen. ①

To Cancel the Cinema Mode

Set [CAMERA FUNCTIONS] >> [CAMERA SETUP] >> [CINEMA] >> [OFF].

- For other notes concerning this item, see page 47.



0 Lux Night View Function

Your Movie Camera emits infra-red rays so as to record subjects that cannot be seen with the naked eye.

- 1 Set the [0 LUX ON/OFF] Switch to [ON] to make the [0LUX] Indication appear.

- Built-in Infra-red Beam Emitters ① light up. Be careful not to cover them with your hand during recording.

To cancel the 0 Lux Night View Function

Set the [0 LUX ON/OFF] Switch to [OFF] to turn off the [0LUX] Indication.

- For other notes concerning this item, see page 47.



Backlight Compensation Function

This prevents a recording subject from being recorded darker in backlight. (Backlight is the light that shines from behind a recording subject.)

- 1 Press the [BLC] Button.

- The [BLC] Indication ① appears.

To Resume Normal Recording

Press the [BLC] Button.

- When the [BLC] Button is pressed, the entire screen becomes brighter.
- By operating the [VCR/OFF/CAMERA/M-CARD] Switch to [OFF], the Backlight Compensation Function is cancelled.

Recording in Special Situations

(Programme AE)

You can select optimal automatic exposures under specific recording situations.

- 1 Press the [AUTO/MNL] Button for about 1 second to display the [MNL] Indication.
- 2 Set [CAMERA FUNCTIONS] >> [CAMERA SETUP] >> [PROG.AE] >> a desired mode.

• The Indication for the selected mode appears.

[] Sports Mode ①

For recording scenes involving quick movements, such as sports scenes.

[] Portrait Mode ②

For bringing up people clearly from the background.

[] Low Light Mode ③

For recording a dark scene brighter.

[] Spotlight Mode ④

For recording a subject under spotlight in a party, theatre, etc.

[] Surf & Snow Mode ⑤

For recording in a glaring surrounding, such as skiing grounds, beaches, etc.

To Cancel the Programme AE Function

Set [CAMERA FUNCTIONS] >> [CAMERA SETUP] >> [PROG.AE] >> [OFF].

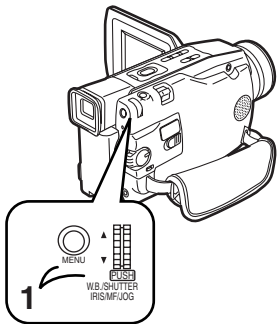
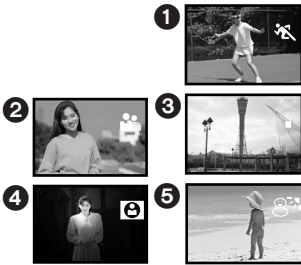
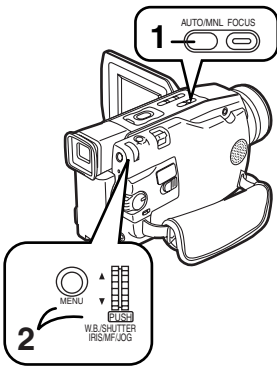
• For other notes concerning this item, see page 47.

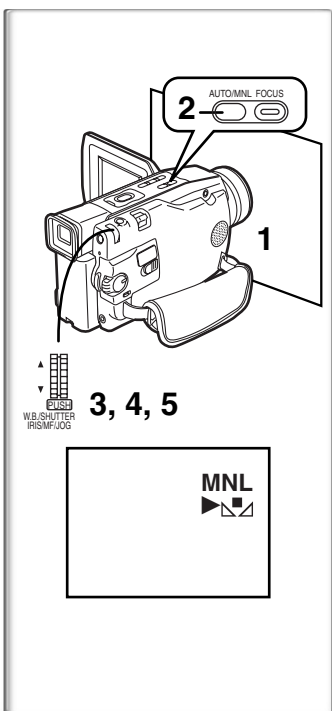
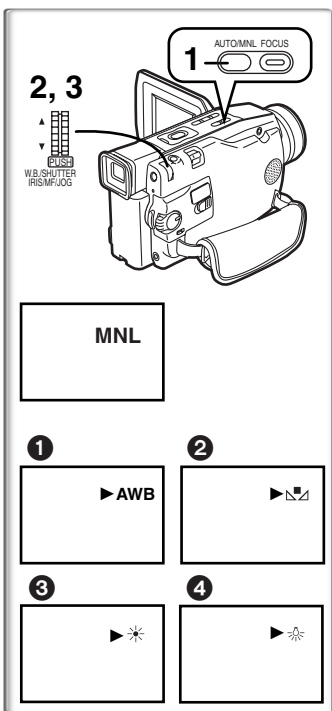
~~~~~ Wind Noise Reduction Function

This function reduces the sound of a wind hitting the microphone for recording.

- 1 Set [CAMERA FUNCTIONS] >> [RECORDING SETUP] >> [WIND CUT] >> [ON].

• The [WIND CUT] Indication ① appears.





Recording in Natural Colours

(White Balance)

Depending on the scene or light condition, the Automatic White Balance Adjustment Mode may not be able to bring out natural colours. (→ 26, 56) In such a case, the white balance can be adjusted manually.

- 1 Press the [AUTO/MNL] Button for about 1 second to display the [MNL] Indication.
- 2 Press the [PUSH] Dial.
 - The [AWB] Indication appears.
- 3 Turn the [PUSH] Dial to set a desired White Balance Mode.

- 1 Automatic White Balance Adjustment [AWB]
- 2 The white balance setting that was previously set manually [MNL]
- 3 Outdoor Mode [☀]
- 4 Indoor Mode (recording under incandescent lamp) [💡]

To Resume Automatic Adjustment

Turn the [PUSH] Dial until the [AWB] Indication appears. Or, press the [AUTO/MNL] Button for about 1 second to display the [AUTO] Indication.

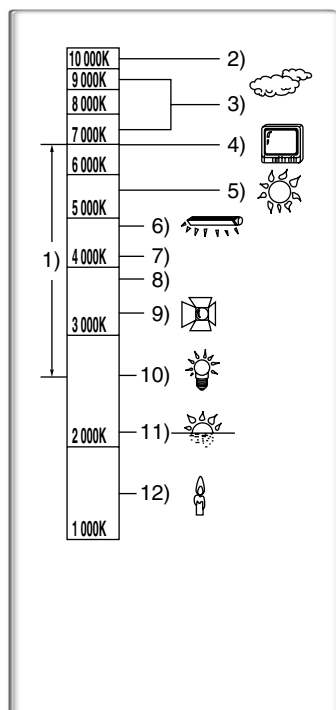
Adjusting White Balance Manually

For light outside the functional Auto White Balance Adjustment range, use the Manual White Balance Adjustment Mode.

- 1 Point the Movie Camera at a full-screen white subject.
- 2 Press the [AUTO/MNL] Button for about 1 second to display the [MNL] Indication.
- 3 Press the [PUSH] Dial.
 - The [AWB] Indication appears.
- 4 Turn the [PUSH] Dial until the [MNL] Indication is displayed.
- 5 Keep pressing [PUSH] Dial until the [MNL] Indication stops flashing.

To Resume Automatic Adjustment

Turn the [PUSH] Dial until the [AWB] Indication is displayed. Or, press the [AUTO/MNL] Button for about 1 second to display the [AUTO] Indication.



Outside of the effective range of Automatic White Balance Adjustment, the image will become reddish or bluish. Even within the effective range of Automatic White Balance Adjustment, the Automatic White Balance Adjustment may not function properly if there is more than one light source. In this case, adjust the White Balance.

- 1) The effective range of Automatic White Balance Adjustment on this Movie Camera
- 2) Blue sky
- 3) Cloudy sky (Rain)
- 4) TV screen
- 5) Sunlight
- 6) White fluorescent lamp
- 7) 2 hours after sunrise or before sunset
- 8) 1 hour after sunrise or before sunset
- 9) Halogen light bulb
- 10) Incandescent light bulb
- 11) Sunrise or sunset
- 12) Candlelight

• For other notes concerning this item, see page 47.

~~~~~ Manual Shutter Speed Adjustment ~~~~~

It is useful for recording fast-moving subjects.

- 1 Press the [AUTO/MNL] Button for about 1 second to display the [MNL] Indication.
- 2 Press the [PUSH] Dial until the Shutter Speed Indication ❶ appears.
- 3 Turn the [PUSH] Dial to adjust the shutter speed.

Range of Shutter Speed Adjustment

1/50–1/8000 s

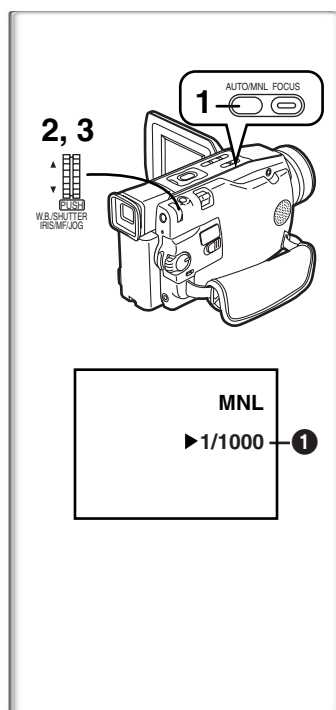
The standard shutter speed is 1/50 s.

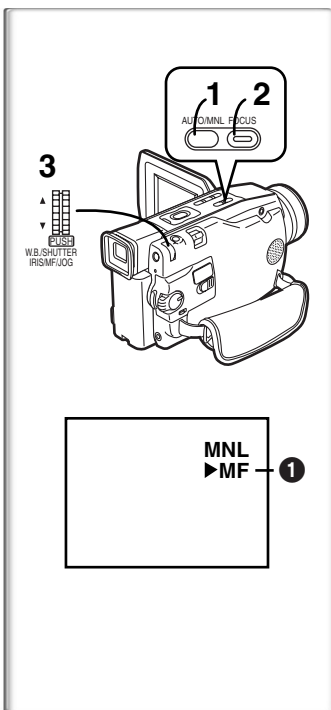
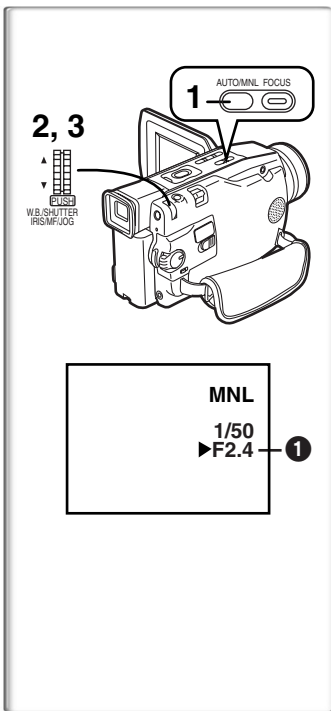
Selecting a speed closer to [1/8000] causes the shutter speed to be faster.

To Resume Automatic Adjustment

Press the [AUTO/MNL] Button for about 1 second to display the [AUTO] Indication.

• For other notes concerning this item, see page 47.





Manual Iris Adjustment

(F Number)

You can use this function when the screen is too bright or too dark.

- 1 Press the **[AUTO/MNL]** Button for about 1 second to display the **[MNL]** Indication.
- 2 Press the **[PUSH]** Dial until the Iris Indication **①** appears.
- 3 Turn the **[PUSH]** Dial to adjust the iris.

Range of Iris Adjustment

CLOSE (Closed), F16, ..., F2.0, OP (Opened)+0dB, ..., OP+18dB
When the Gain-up Mode **[GAINUP]** (→ 28) is used, Iris adjustment is by OP+12dB.

When a value closer to **[CLOSE]** is selected, the image becomes darker.

When a value closer to **[OP+18dB]** is selected, the image becomes brighter.

The value to which +dB is attached indicates a Gain-up value. If this value is too large, the quality of the image deteriorates.

To Resume Automatic Adjustment

Press the **[AUTO/MNL]** Button for about 1 second to display the **[AUTO]** Indication.

•For other notes concerning this item, see page 48.

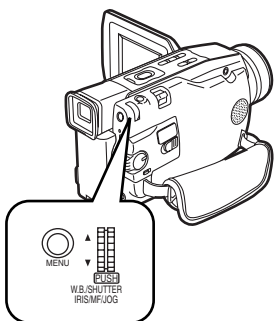
Manual Focus Adjustment

Focus can be adjusted manually for recording in a situation where auto focus may not function well.

- 1 Press the **[AUTO/MNL]** Button for about 1 second to display the **[MNL]** Indication.
- 2 Press the **[FOCUS]** Button.
 - The **[MF]** Indication (Manual Focus Mode) **①** appears.
- 3 Turn the **[PUSH]** Dial to adjust the focus.

To Resume Automatic Adjustment

Press the **[FOCUS]** Button to turn off the **[MF]** Indication. Or, press the **[AUTO/MNL]** Button for about 1 second to display the **[AUTO]** Indication.



1) MIRROR



2) STROBE



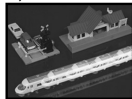
3) MOSAIC



4) SLIM



5) TRACER



6) STRETCH



7) GAINUP



8) WIPE



9) MIX



10) P-IN-P



Digital Effect Functions

This Movie Camera is equipped with Digital Effect Functions that add special effects to the scene.

Digital Effects [EFFECT]

- 1) Mirror Mode [MIRROR]
 - The right half of an image becomes a mirror image of the left half.
- 2) Strobe Mode [STROBE]
 - It records images with a stroboscopic effect.
- 3) Mosaic Mode [MOSAIC]
 - It produces a mosaic-like image.
- 4) Slim Mode [SLIM]
 - The picture is expanded vertically.
- 5) Trailing Effect Mode [TRACER]
 - It records images with a trailing effect.
- 6) Stretch Mode [STRETCH]
 - The Picture is expanded horizontally.
- 7) Gain-up Mode [GAINUP]
 - It brightens images electronically.
 - Adjust focus manually when using this mode. (→ 27)
- 8) Wipe Mode [WIPE] (→ 29)
- 9) Mix Mode [MIX] (→ 29)
- 10) Picture in Picture Mode [P-IN-P] (→ 29)

To Select a Desired Digital Effect

Set [CAMERA FUNCTIONS] >> [DIGITAL EFFECT] >> [EFFECT] >> a desired Digital Effect.

To Cancel the Digital Effect

Set [CAMERA FUNCTIONS] >> [DIGITAL EFFECT] >> [EFFECT] >> [OFF].

● For other notes concerning this item, see page 48.

■ Wipe Mode and Mix Mode

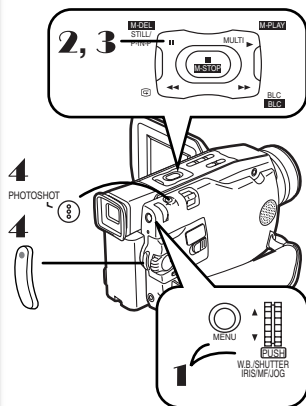
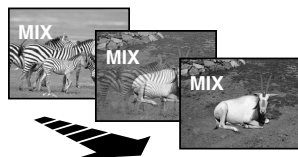
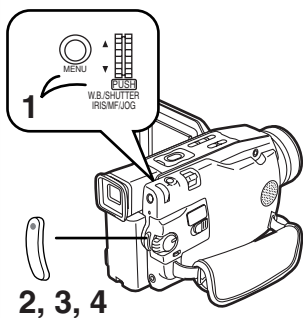
Wipe Mode:

Like a curtain is being pulled, the still picture of the last recorded scene gradually changes to the moving image of a new scene.

Mix Mode:

While the moving image of a new scene fades in, the still image of the last recorded scene gradually fades out.

- 1 Set [DIGITAL EFFECT] >> [EFFECT] >> [WIPE] or [MIX].**
 - The [WIPE] or [MIX] Indication appears.
- 2 Press the Recording Start/Stop Button to start recording.**
- 3 Press the Recording Start/Stop Button to pause the recording.**
 - The last scene is stored in memory. The [WIPE] or [MIX] Indication changes to [WIPE] or [MIX].
- 4 Press the Recording Start/Stop Button to restart the recording.**
 - The last image of the previous scene gradually changes to the new scene.



■ Picture-in-Picture Mode

You can display a sub-screen (still picture) inside the screen.

- 1 Set [CAMERA FUNCTIONS] >> [DIGITAL EFFECT] >> [EFFECT] >> [P-IN-P].**
- 2 Aim the Movie Camera at the scene you want to capture and press the [STILL] Button for about 1 second.**
- 3 Press the [P-IN-P] Button.**
 - A small still picture is displayed in a Normal picture.
 - If the [STILL] Button is pressed again, the small still picture is cleared.
- 4 Press the Recording Start/Stop Button or the [PHOTOSHOT] Button to record on the Cassette.**

• For other notes concerning this item, see page 48.

VCR Mode

Playing Back

The recorded scene can be played back immediately after the recording.

- 1 Set the [VCR/OFF/CAMERA/M-CARD] Switch to [VCR].

- The [POWER] Lamp lights up. ①

- 2 Press the [◀◀] Button to rewind the tape.

- Rewind the tape to the point where you want to start playback.
- When the tape reaches the beginning, rewinding stops automatically.

- 3 Press the [▶▶] Button to start playback.

- The [▶] Indication ② appears.

To Stop Playback

Press the [■] Button. ③

Adjusting the Sound Volume

- 1 Push the [VOLUME] lever in the VCR mode.

- The [VOLUME] Indication ④ appears.

To adjust the volume with the Remote Controller, press the [T] or [W] Button to display the [VOLUME] Indication. Press the [T] Button to increase the volume or press the [W] Button to decrease the volume. The [VOLUME] Indication goes off a few seconds after the adjustment is finished.

- If a cassette recorded with a copyright protection signal is played back, the picture is distorted by mosaic-like patterns.

Playback Digital Image Stabilizer Function

Press the [P.B.DIS] Button ⑤. (→ 22)

- When using the Playback Digital Image Stabilizer Function, the image size is slightly larger.
- If the Movie Camera shakes too much, this function may not be able to stabilize images.

Multi-Picture Mode

You can capture and record 9 consecutive small still pictures.

- 1 Set [VCR FUNCTIONS] >> [PLAYBACK FUNCTIONS] >> [MULTI SPEED] >> [FAST], [NORMAL] or [SLOW].

- Set the [MULTI SPEED] to a desired strobe speed. At the [FAST] setting, 9 consecutive still pictures is captured within approximately 1 second, at [NORMAL] within approximately 2 seconds, and at [SLOW] within approximately 3 seconds.

- 2 Press the [▶▶] Button.

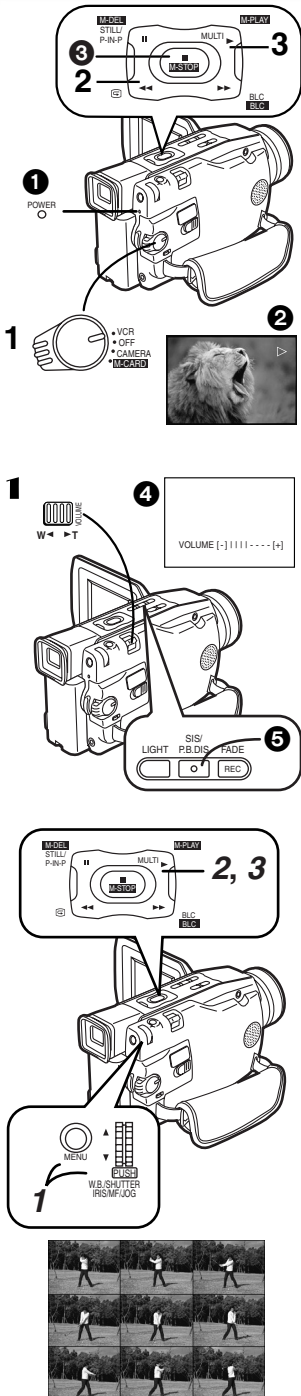
- 3 Press the [MULTI] Button.

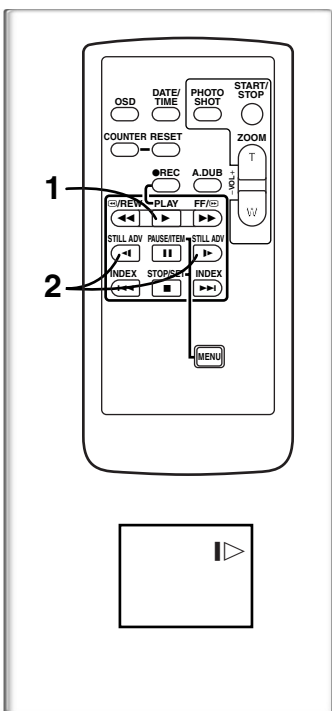
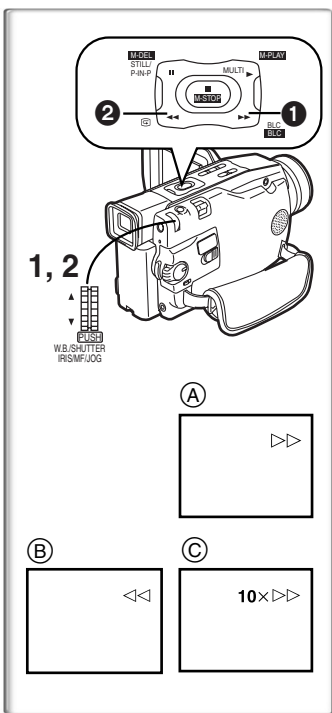
- After 9 small pictures are displayed, the Movie Camera is in the Still Playback Mode.

Deleting all the captured Multi-Pictures

While 9 small pictures are displayed, press the [MULTI] Button.

- For other notes concerning this item, see page 48.





Finding a Scene You Want to Play Back

■ Cue/Review Playback

If the [▶▶] Button ① or [◀◀] Button ② is pressed during Playback, it turns to Cue Playback (A) or Review Playback (B).

- If the Button is held continuously, it turns to Cue Playback or Review Playback until you release it.
- If the Button is pressed briefly, Cue Playback or Review Playback continues even when it is released.

■ Variable Speed Search Function (C)

The speed of Cue Playback or Review Playback can be varied.

- 1 Keep pressing the [PUSH] Dial during playback.
- 2 Turn the [PUSH] Dial to select a desired search speed.

The following 6 playback speeds are available for the Variable Speed Search Function in both the fast-forwarding and rewinding directions:

1/5× (slow playback in SP Mode only), 1/3× (slow playback in LP Mode only), 1×, 2×, 5×, 10× and 20×

■ To Resume Normal Playback

Press the [▶] Button.

- During Cue or Review Playback, fast-moving images may show mosaic-pattern noise.
- The sound is muted during search.

~~~~~ Slow Motion Playback

This Movie Camera can play back at a slow speed.

- 1 Press the [▶] Button.
- 2 Press the [◀] Button or [▶] Button on the Remote Controller.

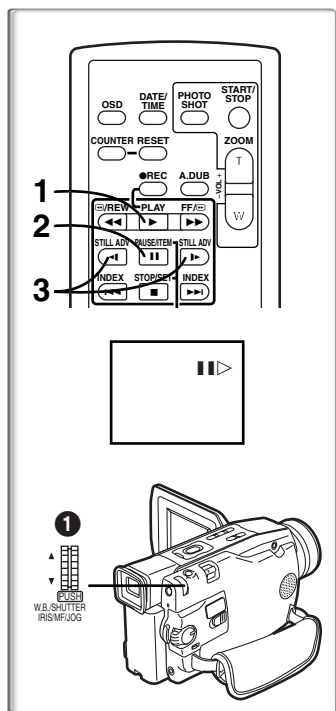
- When the [◀] Button is pressed, Slow Motion Playback proceeds in the reverse direction, while pressing the [▶] Button starts Slow Motion Playback in the forward direction.

Scenes recorded in the SP Mode are played back at approximately 1/5th of the normal speed.

Scenes recorded in the LP Mode are played back at approximately 1/3rd of the normal speed.

To Resume Normal Playback

Press the [▶] Button.



Still Playback/Still Advance Playback

This Movie Camera is capable of still picture playback and frame-advance playback.

- 1 Press the [▶] Button.**
- 2 Press the [⏸] Button.**
 - The playback image stops in the Still Playback Mode.
- 3 Press the [◀] Button or [▶] Button on the Remote Controller.**

- With each pressing of the [◀] Button, still pictures advance in the reverse direction. With each pressing of the [▶] Button, still pictures advance in the forward direction. If either one of the buttons continues to be pressed, still pictures advance continuously 1 frame at a time until the button is released.

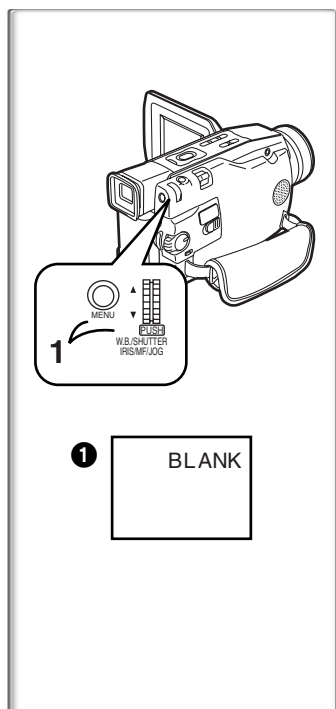
To Resume Normal Playback

Press the [▶] Button.

Jog Playback

By turning the Jog Dial ([PUSH] Dial) **1** of the Movie Camera in the Still Playback Mode, still pictures can be advanced one frame at a time in the forward or backward direction.

- If the Movie Camera is left in the Still Playback Mode for more than 3 minutes, the Movie Camera switches to the Stop Mode to protect the video heads from excessive wear and tear.



Finding the End of Recording

(Blank Search Function)

The Blank Search Function aids you locate the end of the recording on the Cassette quickly.

- 1 Set [VCR FUNCTIONS] >> [PLAYBACK FUNCTIONS] >> [BLANK SEARCH] >> [YES].**
 - The [BLANK] Indication appears **1** during the Blank Search.
 - Approximately 1 second before the last recorded scene, the Movie Camera switches to the Still Playback Mode.
 - If there is no blank portion left on the Cassette, the Movie Camera stops at the end of the tape.

To Cancel Blank Search Before Completion

Press the [■] Button.

Index Search Functions

To facilitate searching of desired scene, this Movie Camera automatically records index signals during recording, as explained in the following.

Photoshot Index Signal

These signals are automatically recorded whenever still pictures are taken in Photoshot Mode. (→ 20) Photoshot Index Signals are not recorded on still pictures recorded in Continuous Photoshot Mode.

Scene Index Signal

Scene Index Signals are automatically recorded when you start recording after inserting a Cassette.

- If [SCENEINDEX] of [RECORDING SETUP] Sub-Menu on the [CAMERA FUNCTIONS] Main-Menu is set to [2HOUR], an index signal is recorded when recording is restarted after an elapse of 2 hours or longer. If it is set to [DAY], an index signal is recorded when recording is restarted after the date has changed since the last recording. (While the index signal is recorded, the [INDEX] Indication flashes for a few seconds. (A))
- If the Movie Camera is switched from the VCR Mode to Camera Mode or if the date and time is set before the start of recording, the index signal is not recorded.

Photoshot Index Search

- 1 Set [VCR FUNCTIONS] >> [PLAYBACK FUNCTIONS] >> [SEARCH] >> [PHOTO].
- 2 Press the [▶▶] Button ① or [◀◀] Button ② on the Remote Controller.

- With each press of the corresponding button, still pictures recorded in Photoshot Mode are searched.
- Sounds are played back for approximately 4 seconds.

Scene Index Search

- 1 Set [VCR FUNCTIONS] >> [PLAYBACK FUNCTIONS] >> [SEARCH] >> [SCENE].
- 2 Press the [▶▶] Button or [◀◀] Button on the Remote Controller.

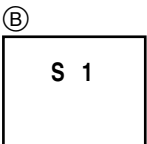
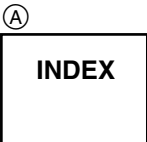
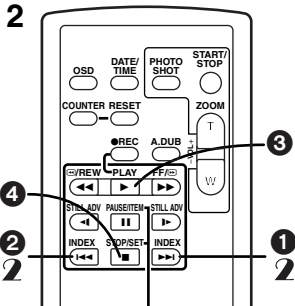
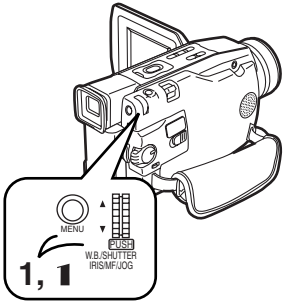
- When the corresponding button is pressed once, the [S 1] Indication (B) appears, and searching of the subsequent scene marked with an index signal starts. Each time the button is pressed after the start of Scene Index Search, the indication changes from [S 2] to [S 9], and the beginning of the scene corresponding to the selected number will be searched.

- Up to 9 scene numbers can be selected.

Continuous Index Search

If the [▶▶] Button or the [◀◀] Button is pressed for 2 seconds or longer, search can be continued at several-second intervals. (To cancel, press the [▶] Button ③ or the [■] Button ④.)

- For other notes concerning this item, see page 48.



Playback Digital Effect Functions

During playback, special digital effects can be added to the recorded pictures.

Digital Effects 1 [EFFECT1]

The same effects as those of Digital Effects, which are used during recording, are obtained. (→ 28)

Digital Effects 2 [EFFECT2]

1) Sepia Mode [SEPIA]

- It records a scene with a brownish tint, like the colour of old pictures.

2) Black & White Mode [B/W]

- It records an image in black and white.

To Select a Desired Digital Effect

Set [VCR FUNCTIONS] >> [DIGITAL EFFECT] >> [EFFECT1] or [EFFECT2] >> a desired Digital Effect.

To Cancel the Digital Effect

Set [VCR FUNCTIONS] >> [DIGITAL EFFECT] >> [EFFECT1] or [EFFECT2] >> [OFF].

- If the Movie Camera is turned off, the [EFFECT2] settings are cancelled.

Playback Digital Zoom Function

The centre of the image is enlarged to approximately 2 times during playback.

1 Set [VCR FUNCTIONS] >> [DIGITAL EFFECT] >> [D.ZOOM] >> [ON].

To Cancel the Playback Digital Zoom Function

Set [D.ZOOM] on the [DIGITAL EFFECT] Sub-Menu to [OFF].

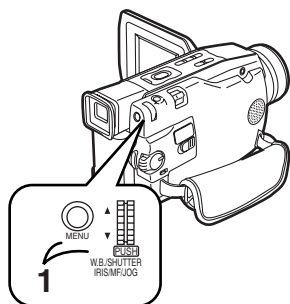
- If you turn off the Movie Camera power or if you switch from VCR Mode to other Mode, Playback Digital Zoom Function is automatically cancelled.

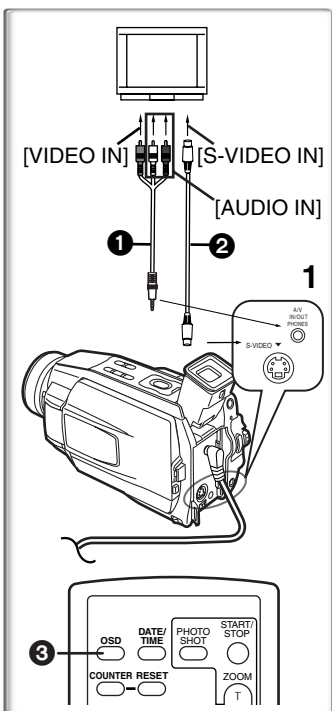
- For other notes concerning this item, see page 48.

1) SEPIA



2) B/W





Playing Back on Your TV

By connecting your Movie Camera with your TV, the recorded scenes can be viewed on your TV screen.

- Before connecting them, turn off the power of both the Movie Camera and TV.

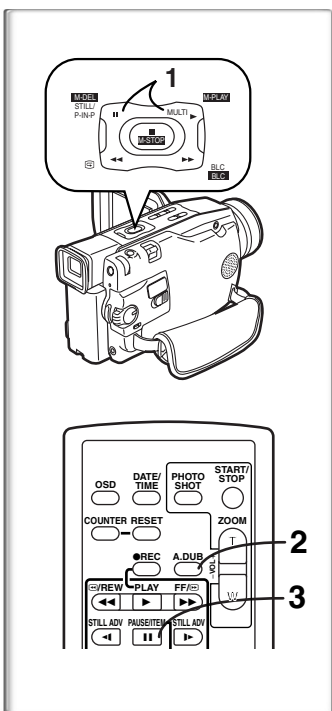
1 Connect the [A/V IN/OUT] Socket of the Movie Camera and the Video and Audio Input Sockets of the TV.

- Using the AV Cable (1), make a connection with the TV. If the TV has an S-Video Socket, connect the S-Video Cable (2) (not supplied), too.

To Make the Indications Appear on the TV Screen

Press the [OSD] Button (3) on the Remote Controller.

- For other notes concerning this item, see page 48.



Audio Dubbing

You can add music or narration to the recorded Cassette.

- If the tape recorded in the [16bit] Mode is dubbed with the Audio Dubbing function, the original sound is erased. (If you wish to preserve the original sound, use the [12bit] Mode when recording.)
- Audio Dubbing cannot be performed on a recording done in LP Mode. (→ 19)

1 Switch the Movie Camera over to the Still Playback Mode where you want to add new sound.

2 Press the [A.DUB] Button on the Remote Controller.

- The same setting can be done using [RECORDING SETUP] Sub-Menu on the [VCR FUNCTIONS] Main-Menu.

3 To start Audio Dubbing, press the [II] Button.

To Cancel Audio Dubbing

Press the [II] Button.

The Movie Camera is in the Still Playback Mode again.

To Play Back the Sound Recorded by 12bit Audio Dubbing

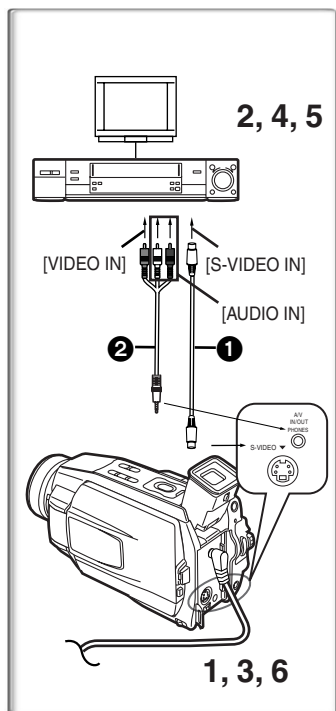
Set [VCR FUNCTIONS] >> [PLAYBACK FUNCTIONS] >> [12bit AUDIO] >> [ST2] or [MIX].

ST1: It plays back only the original sound.

ST2: It plays back only the sound added by Audio Dubbing.

MIX: It plays back both the original sound and the sound added by Audio Dubbing simultaneously.

- For other notes concerning this item, see page 49.



Copying on an S-VHS (or a VHS) Cassette (Dubbing)

After connecting the Movie Camera and the VCR as illustrated at left, start the following procedures.

- Be sure to press the [OSD] Button (→ 8) on the Remote Controller prior to copying so that no indications are visible. Otherwise, the displayed tape counter and function indications are also copied.

Movie Camera:

- 1 Insert the recorded Cassette.

VCR:

- 2 Insert an unrecorded Cassette with an erasure prevention tab.

- If various setups (such as external input, tape speed, etc.) are required, please refer to the operating instructions of your VCR.

Movie Camera:

- 3 Press the [▶] Button to start playback.

VCR:

- 4 Start recording.
- 5 Press the Pause or Stop Button to stop recording.

Movie Camera:

- 6 Press the [■] Button to stop playback.

- ① S-Video Cable (not supplied)

- ② AV Cable

~~~~~ Recording the Contents of Other Equipment

After connecting the Movie Camera and the other equipment as illustrated at left, start the following procedures.

Movie Camera:

- 1 Set [VCR FUNCTIONS] >> [RECORDING SETUP] >> [AV JACK] >> [IN].

- The [LINE-IN] Indication appears.

- 2 Insert an unrecorded Cassette.

Other Equipment:

- 3 Insert a recorded Cassette and start playback.

Movie Camera:

- 4 While pressing the [REC] Button, press the [▶] Button.

- 5 Press the [||] Button or [■] Button to stop recording.

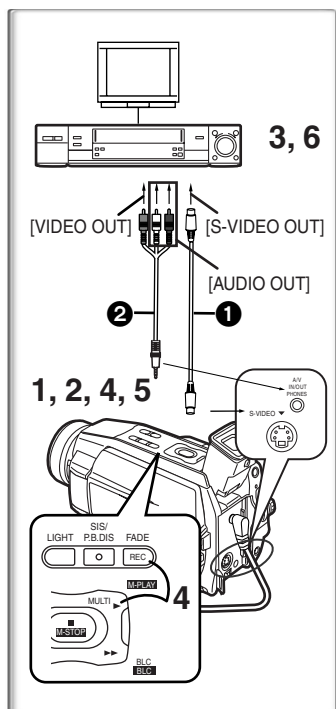
Other Equipment:

- 6 Press the Stop Button to stop playback.

- ① S-Video Cable (not supplied)

- ② AV Cable

- For other notes concerning this item, see page 49.



Using the DV Cable for Recording

(Digital Dubbing)

By connecting this Movie Camera with other digital video equipment that has a DV Input/Output Terminal using a DV Cable VW-CD1E (optional) ❶, dubbing can be done in the digital format.

[Player/Recorder]

1 Insert the Cassette and set to the VCR Mode.

[Player]

2 Press the [▶] Button to start playback.

[Recorder]

3 Set [VCR FUNCTIONS] >> [RECORDING SETUP] >> [AV JACK] >> [OUT/PHONES].

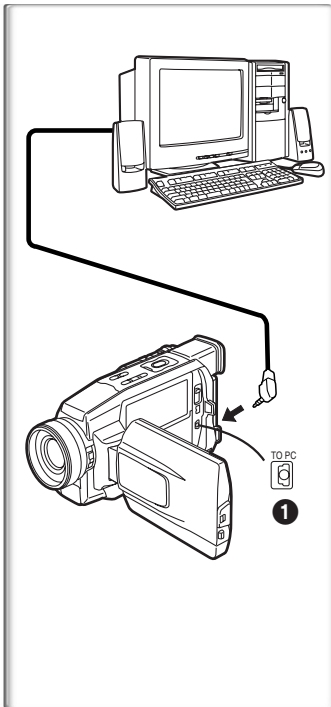
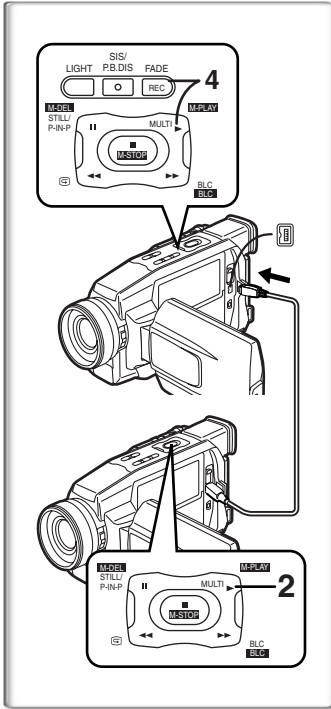
4 While pressing the [REC] Button, press the [▶] Button.

- Recording starts.

To Stop Dubbing

Press the [||] Button or the [■] Button.

- For other notes concerning this item, see page 49.

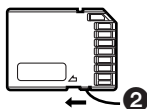
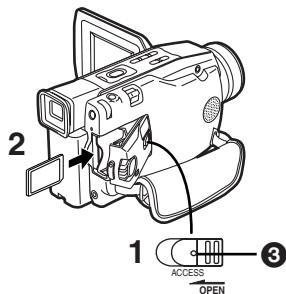


~~~~~ Personal Computer Connection Kit

(NV-DS30 only)

Using the Personal Computer Connection Kit, you can import still pictures into your personal computer.

- Use the Digital Still Picture Terminal [TO PC] ❶ when using the Personal Computer Connection Kit.
- When recording, be careful not to cut off the Time Code from the start of the tape.
- For more details on the operating environment, connections, and procedures, please refer to Personal Computer Connection Kit's operating instructions.



CARD Mode

Using a Card

A Card can be used to record still pictures.

- Use genuine card only.

Inserting a Card

Before inserting a Card, be sure to turn off the Movie Camera.

- 1 Slide the [OPEN] Lever and open the Card Slot Cover.
- 2 Insert the Card in the direction as shown in the illustration ①.
- 3 Close the Card Slot Cover securely.

Removing the Card

Open the Card Slot Cover and press the centre of the Card and then pull it straight out.

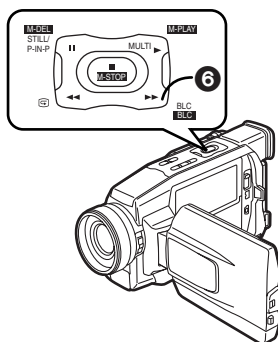
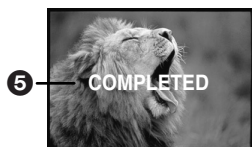
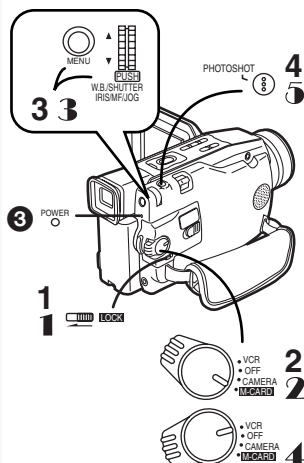
- After removing the Card, close the Card Slot Cover.

- The SD Memory Card has a write protection switch on it. ② If the switch is moved to the [LOCK] side, you cannot write to or format the Card. If it is moved back, you can.

[ACCESS] Lamp ③

While the Movie Camera is making an access to the Card (reading, recording, playback, erasing, moving of images), the [ACCESS] Lamp lights up and the [PLEASE WAIT] Indication ④ appears.

- While the [ACCESS] Lamp is on, never attempt to open the Card Compartment, to pull out the Card or to turn off the Movie Camera. Such actions will damage the Card, cause loss of recorded data and cause the Movie Camera to malfunction.



Recording on a Card

Still pictures can be recorded on a Card from the Movie Camera lens as well as from scenes that have already been recorded on a cassette.

- Card Photoshot cannot be used when a DV Cable is connected.

Card Photoshot

Recording from the Movie Camera Lens

1 Slide the [LOCK] Switch to unlock.

- If the Card Lock Switch is set to lock, the [VCR/OFF/CAMERA/M-CARD] Switch cannot be set to [M-CARD].

2 Set the [VCR/OFF/CAMERA/M-CARD] Switch to [M-CARD].

- The [POWER] Lamp lights up. ③

3 Set [CARD SETUP] >> [REC MODE] >> [320×240] or [640×480].

4 Press the [PHOTOSHOT] Button.

- The [PROCESSING] Indication ④ appears and saving a picture takes some time. When saving is finished the [COMPLETED] Indication ⑤ appears.
- If nothing is recorded for approximately 6 minutes with a Card inserted, the Movie Camera is turned off automatically.

Recording from a Cassette

1 Slide the [LOCK] Switch to unlock.

- If the Card Lock Switch is set to lock, the [VCR/OFF/CAMERA/M-CARD] Switch cannot be set to [M-CARD].

2 Set the [VCR/OFF/CAMERA/M-CARD] Switch to [M-CARD].

- The [POWER] Lamp lights up. ③

3 Set [CARD SETUP] >> [REC MODE] >> [320×240] or [640×480].

4 Set the [VCR/OFF/CAMERA/M-CARD] Switch to [VCR].

5 Start playback and set the Movie Camera to Still Playback Mode at the scene you wish to record, and press the [PHOTOSHOT] Button.

- Saving a picture takes some time.

① Remaining Number of Card Photoshot pictures

② Picture Size

Maximum number of images recordable on a supplied Card (8MB)

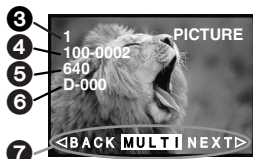
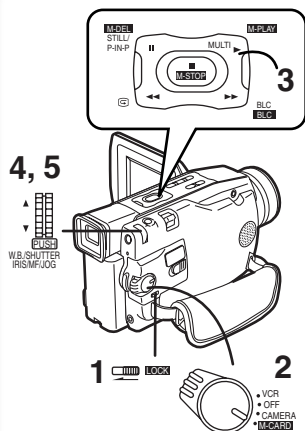
[640×480] (high image quality): approximately 70 pictures

[320×240] (Normal): approximately 190 pictures

To Use the Backlight Compensation Function

Press the [BLC] Button ⑥ in the Card Recording Mode. (→ 23)

- For other notes concerning this item, see page 49.



Playing Back a Card

It plays back images recorded on a Card.

1 Slide the [LOCK] Switch to unlock.

- If the Card Lock Switch is set to lock, the [VCR/OFF/CAMERA/M-CARD] Switch cannot be set to [M-CARD].

2 Set the [VCR/OFF/CAMERA/M-CARD] Switch to [M-CARD].

3 Press the [M-PLAY] Button.

- The still pictures recorded on the Card are displayed in Multi-Picture Mode. ①

② File Number (If the colour of File Number is white, the picture size is [640×480], if green, the picture size is [320×240].)

4 Turn the [PUSH] Dial and select a desired picture.

- The selected picture is underlined.
- When 7 or more pictures have been recorded, turn the [PUSH] Dial to display the next picture.

5 Press the [PUSH] Dial.

- The selected picture is shown on the entire screen.

③ File Number

④ DCF Number (Folder-File Number)

⑤ Picture Size (→ 39)

⑥ Number of prints set by DPOF (→ 43)

To Change the Display on the Screen

Set [CARD SETUP] >> [DISPLAY] or [DCF NO.] >> [OFF].

DISPLAY: Select [OFF] to cancel all displays on the screen

DCF NO.: Select [OFF] to cancel DCF Number on the screen.

Playing Back Another Picture

Turn the [PUSH] Dial and select [BACK] to play back the previous Picture or [NEXT] to play back the next Picture ⑦. Then press the [PUSH] Dial.

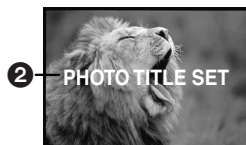
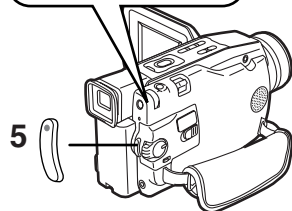
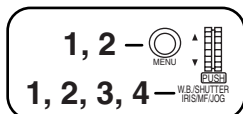
Returning to the Multi-Picture Mode

Turn the [PUSH] Dial and select [MULTI] ⑦, then press the [PUSH] Dial.

Returning to the Card Recording Mode

Press the [M-STOP] Button in Multi-Picture Mode.

- For other notes concerning this item, see page 49.



Recording with a Photo Title

Card Images can be recorded as the Photo Title in CAMERA Mode.

1 Set [CAMERA FUNCTIONS] >> [PHOTO TITLE] >> [MODE] >> [WIPE] or [MIX].

2 Set [CAMERA FUNCTIONS] >> [PHOTO TITLE] >> [TITLE] >> [SET].

- A list of Photo Titles is displayed. **1**

3 Turn the [PUSH] Dial to select a desired title.

- The selected Photo Title is underlined.

4 Press the [PUSH] Dial.

- The selected Photo Title is shown on the entire screen and the [PHOTO TITLE SET] Indication **2** appears for approximately 3 seconds, and the screen goes back to the Camera Mode screen.

5 Press the Recording Start/Stop Button.

- [WIPE] or [MIX] screen is displayed at beginning of the recording.

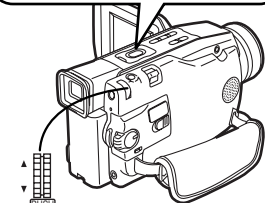
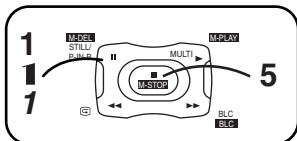
WIPE:

The Photo Title is replaced with the current scene in a wiping motion.

MIX:

The Photo Title is replaced with the current scene in a gradual mixing effect.

- For other notes concerning this item, see page 49.



2, 3, 4, 5
2, 3
2, 3

Deleting the Pictures Recorded on a Card

Using the Movie Camera, you can delete the still pictures recorded on a Card. After the picture is deleted, it cannot be restored.

To Select and Delete a Picture

- 1 Press the [M-DEL] Button in the card playback mode.**
- 2 Select [FILE] and press the [PUSH] Dial.**
- 3 Select the picture and press the [PUSH] Dial.**
 - The selected Picture is underlined pink.
 - A verification message appears.
- 4 Select [YES] and press the [PUSH] Dial.**
 - The selected picture is deleted from the Card.
 - If [NO] is selected, the picture selection is cancelled.
- 5 Repeat Step 3 and 4 and press the [M-STOP] Button when the setup is completed.**

To Delete All Pictures

- 1 Press the [M-DEL] Button in the card playback mode.**
- 2 Select [ALL] and press the [PUSH] Dial.**
 - A verification message appears.
- 3 Select [YES] and press the [PUSH] Dial.**
 - All the pictures recorded in the Card are deleted.

To Format the Card

- 1 Press the [M-DEL] Button in the card playback mode.**
- 2 Select [FORMAT] and press the [PUSH] Dial.**
 - A verification message appears.
- 3 Select [YES] and press the [PUSH] Dial.**
 - All the data recorded in the Card are deleted.

•For other notes concerning this item, see page 49.

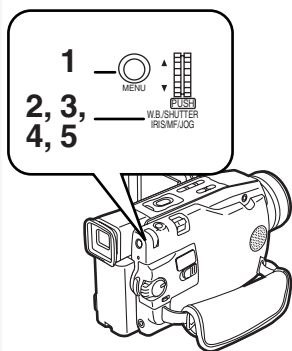
Writing Printing Data on a Card

(DPOF Setting)

DPOF Setting Printing data (DPOF Settings), such as the number of images to be printed, can be written to the Card. "DPOF" means Digital Print Order Format.

- 1 Press **[MENU]** Button in the card playback mode.
- 2 Set **[CARD SETUP] >> [DPOF] >> [ON] >> [VARIABLE] >> [ON]**.
 - Pictures recorded on the Card are displayed in Multi-Picture Mode. ①
 - To print all pictures one at a time, select **[ALL 1]**. When all images are not printed, select **[ALL 0]**.
- 3 Select a desired picture.
 - The number of prints set by DPOF ② is displayed.
- 4 Turn the **[PUSH]** Dial and select the number of pictures to be printed, and press the **[PUSH]** Dial.
 - **[●]** Indication ③ is displayed in the picture set.
- 5 Repeat Step 3 and 4 and press the **[M-STOP]** Button when the setup is completed.

• For other notes concerning this item, see page 49.

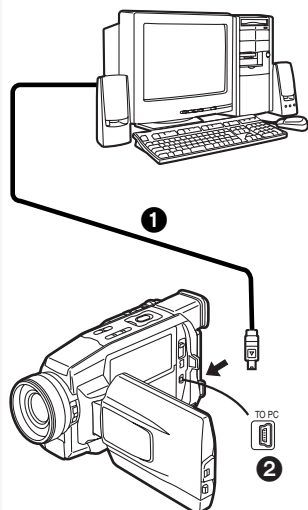


~~~~~ Using the USB Connection Kit

Using the USB Connection Kit, you can import still pictures into your personal computer.

- 1 Install the supplied USB driver.
- 2 Select the desired mode of the Movie Camera.
- 3 Connect the supplied USB Cable ① to **[USB]** Socket. ②
 - It enters PC connection mode.
 - The USB Connection Kit can be used with Windows98 Second Edition/Me/2000/XP.
 - Use the AC Adaptor as power source for the Movie Camera. (The Card or its contents may be destroyed if battery power is lost while transmitting data.)
 - Mode cannot be changed in PC connection mode by setting the **[VCR/OFF/CAMERA/M-CARD]** Switch.

• For more details on the operating environment, installation, connections, and procedures, please refer to USB Connection Kit's operating instructions.

















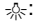


Others

Indications

Various functions and the Movie Camera status are shown on the screen.

- Some Indications may not be displayed according to the model.

| | |
|------------------------------------------------------------------------------------|--------------------------------------------------------------------------------------------------------------------------------------------------------------------------------------------------------------------------------------------------------------------------------------------------------|
|  | Remaining Battery Power |
| • | When the battery power becomes low, the Indication changes. When the battery is discharged completely, the  () Indication flashes. |
|  | (When you are using the AC Adaptor, the ) Indication may appear, however, this is not a malfunction.) |
| R0:45: | Remaining Tape Time |
| • | Remaining tape time is indicated in minutes. (When it reaches less than 3 minutes, the indication starts flashing.) |
| CINEMA: | Cinema Mode (→ 23) |
| D.ZOOM: | Digital Zoom (→ 21) |
| P-IN-P: | Picture in Picture Mode (→ 28) |
| WIPE: | Wipe Mode (→ 28) |
| MIX: | Mix Mode (→ 28) |
| STROBE: | Strobe Mode (→ 28) |
| GAINUP: | Gain-up Mode (→ 28) |
| TRACER: | Trailing Effect Mode (→ 28) |
| MOSAIC: | Mosaic Mode (→ 28) |
| MIRROR: | Mirror Mode (→ 28) |
| SLIM: | Slim Mode (→ 28) |
| STRETCH: | Stretch Mode (→ 28) |
| SEPIA: | Sepia Mode (→ 34) |
| B/W: | Black & White Mode (→ 34) |
| ZOOM: | Playback Digital Zoom (→ 34) |
| SP: | Standard Mode (Recording Speed Mode) (→ 19) |
| LP: | Long Play Mode (Recording Speed Mode) (→ 19) |
| INDEX: | Index signal recording (→ 33) |
| S 1: | Search Number (→ 33) |
| 5x: | Zoom Magnification Indication (→ 21) |
| AUTO: | Automatic Mode (→ 18) |
| MNL: | Manual Mode (→ 25, 26, 27) |
|  | Image Stabilizer (→ 22) |
| 12 bit, 16 bit: | Audio Recording Mode (→ 19) |
| MF: | Manual Focus (→ 27) |
|  | Back Light Mode (→ 23) |

| | |
|-------------------------------------------------------------------------------------|----------------------------------------------------------------------------------------------|
|  | Sports Mode (Programme AE) (→ 24) |
|  | Portrait Mode (Programme AE) (→ 24) |
|  | Low Light Mode (Programme AE) (→ 24) |
|  | Spotlight Mode (Programme AE) (→ 24) |
|  | Surf & Snow Mode (Programme AE) (→ 24) |
| REC: | Recording (→ 18) |
| PAUSE: | Recording Pause (→ 18) |
| ▷: | Playback (→ 30) |
| : | Still Playback (→ 32) |
| ▷▷: | Fast-forward/Cue Playback (→ 31) |
| <<: | Rewind/Review Playback (→ 30) |
| < , >: | Slow Motion Playback (→ 31) |
| < , >: | Still Advance Playback (→ 32) |
| SEARCH: | Index Search (→ 33) |
| CHK: | Recording Check (→ 18) |
| A.DUB ▷: | Audio Dubbing (→ 35) |
| A.DUB : | Audio Dubbing Pause (→ 35) |
| PHOTO: | Photoshot Mode Recording (→ 20) |
| BLANK: | Blank Search (→ 32) |
| 2x ▷▷: | Variable Speed Search (→ 31) |
| 1/500: | When you adjust shutter speed manually, this indication appears. (→ 26) |
| F2.4: | When you adjust the F Number manually, this indication appears. (→ 27) |
| AWB: | Automatic White Balance Mode (→ 25) |
|  | White Balance setting Mode (→ 25) |
|  | Outdoor Mode (→ 25) |
|  | Indoor Mode (recording under incandescent lamp) (→ 25) |
| Z.MIC: | Zoom Microphone (→ 21) |
| WIND CUT: | Wind Noise Reduction (→ 24) |
|  | Progressive Photoshot Mode (→ 20) |
|  | Video Light is on. (→ 19) |
| 0LUX: | 0 Lux Night View Mode (→ 23) |
| VOLUME: | Volume adjustment (→ 30) |
| 15:30:45: | Date/Time Indication (→ 45) |
| PLEASE WAIT: | While Card is being read (during Playback, Formatting and Multi-Picture Function use) (→ 38) |
| PROCESSING: | Card Photoshot Recording (→ 39) |
| COMPLETED: | Card Photoshot Recording completed (→ 39) |

CONNECT WITH PC:

Movie Camera is connected with PC.

WEBCAM: PC connection mode
(in Camera mode)

CAPTURE: PC connection mode
(in VCR mode)

STORAGE: PC connection mode
(in Card playback mode)

00: Remaining Number of Card
Photoshot pictures (→ 39)

100-0001: DCF Number (→ 40)

D-001: Number of prints set by DPOF
(→ 43)

1(white): File Number ([640×480] Image
size)(→ 40)

1(green): File Number ([320×240] Image
size)(→ 40)

●: DPOF Setting completed (→ 43)

640: [640×480] Image size

320: [320×240] Image size

● For images not recorded with this Movie Camera,
the size display is determined as follows according
to the number of horizontal pixels.

640: From 640 to 800 (The size is not
displayed at under 640 pixels.)

SVGA: From 800 to 1024

XGA: From 1024 to 1280

SXGA: From 1280 to 1600

UXGA: Over 1600

■ To Change the Counter Display Mode

By changing [C.DISPLAY] on the [DISPLAY
SETUP] Sub-Menu, you can change the Counter
Display Mode to Tape Counter Indication
[COUNTER] (0:00.00), Memory Counter Indication
[MEMORY] (M0:00.00), and Time Code Indication
[TIMECODE] (0h00m00s00f). (→ 14) By repeatedly
pressing the [COUNTER] Button on the Remote
Controller, you can change the Counter Display
Mode.

■ To Display Date/Time Indication

To display Date/Time Indication, set the appropriate
Date/Time in [DATE/TIME] on the [DISPLAY
SETUP] Sub-Menu. (→ 14)

You can also press the [DATE/TIME] Button of the
Remote Controller repeatedly to display or change
the Date/Time Indication.

■ To Change the Display Mode

By changing [DISPLAY] on the [DISPLAY SETUP]
Sub-Menu, you can change the Display Mode to All
Function Display [ALL], Partial Display [PARTIAL],
and Minimum Display [OFF].

Warning/Alarm Indications

If any one of the following indications lights up or
flashes, please check the condition of the Movie
Camera.

● Some Indications may not be displayed according
to the model.



Condensation has occurred. (→ 51)

The accidental erasure prevention
slider on the inserted Cassette is
open (that is, set to [SAVE]).
You are about to do audio dubbing
on the unrecorded (blank) portion of
the tape.



No Cassette is inserted. (→ 12)

The Battery is low. Recharge it.
(→ 10)



The built-in battery is discharged.
(→ 17)



The video heads are dirty. (→ 52)



The tape came to end during
recording.

REMOTE: Wrong Remote Controller Mode
has been selected. (→ 46)

UNPLAYABLE TAPE (OTHER FORMAT):

You are attempting to play back
a tape section that has been
recorded with a different TV
system.

UNABLE TO A. DUB (LP RECORDED):

Because the original recording
was done in LP Mode, audio
dubbing cannot be performed.

INCOMPATIBLE TAPE:

This Cassette is incompatible.

CARD LOCKED: When you are attempting to
write the data on an SD Memory
Card whose write protection
switch is set at [LOCK].

FILE LOCKED: When you are attempting to
delete a locked picture. The
locked picture cannot be
deleted.

NO SPACE LEFT: Card does not have sufficient
memory remaining.

CARD FULL: Card does not have sufficient
memory remaining.

NO CARD: Card is not inserted.

NO PICTURE: Card has no pictures recorded
on it.

CARD ERROR: This Card is not compatible with
this Movie Camera.

COPY INHIBITED: Because the medium is protected by a copy guard, images cannot be recorded correctly.

CAN NOT CHANGE MODE:
The Mode of the Movie Camera can not be changed in the PC connection Mode.

~~~~~  
**Notes and Hints**

**Selecting Remote Controller Modes**

When 2 Movie Cameras are used simultaneously, they can be operated individually by selecting different Remote Controller Modes.

- If the Remote Controller Mode of the Movie Camera and that of the Remote Controller do not match, [REMOTE] Indication is displayed.

**Setup on the Movie Camera:**

Set [REMOTE] on the [OTHER FUNCTIONS] Sub-Menu to the desired Remote Controller Mode.

(→ 14)

**Setup on the Remote Controller:**

[VCR1]: Press the [▶] Button and [■] Button simultaneously.

[VCR2]: Press the [◀] Button and [■] Button simultaneously.

- When the battery in the Remote Controller is replaced, the mode is automatically reset to [VCR1] Mode.

**Concerning the Power Supply**

- When the Movie Camera is used for a long time, the Camera body becomes warm, but this is not a malfunction.
- If the [CHARGE] Lamp does not light up although the Battery is attached to AC Adaptor, detach the Battery and reattach it.
- Battery CGP-D110 and CGP-D105 cannot be charged with this AC Adaptor.

**Inserting/Removing the Cassette**

- If a new Cassette is inserted, rewind to the beginning of the tape before starting recording.
- When inserting the cassette, make sure it faces in the right direction and then push it in until it stops.

**Alarm Sounds**

When [BEEP SOUND] on the [OTHER FUNCTIONS] Sub-Menu on the [CAMERA FUNCTIONS] Main-Menu is set to [ON], confirmation/alarm beeps are issued as follows.

1 Beep

- When you start recording

- When you switch the [VCR/OFF/CAMERA/M-CARD] Switch from [OFF] to Camera Mode or Card Recording Mode.

2 Beeps

- When you pause recording

10 Beeps

- If you perform a wrong operation before or during recording

**Recording**

- Before turning on the power, remove the Lens Cap. If the Lens Cap is still attached when the power is turned on, Automatic White Balance Adjustment (→ 56) may not function correctly.

**Recording Check**

- For Recording Check, the recording speed mode (SP/LP) must be the same as the mode used for the recording. If different, playback images will be distorted.

**Photoshot**

- Photoshot Recording results in slightly inferior image quality.


**Progressive Photoshot Function**

- The still pictures are recorded at a slightly rewound point from where you press the [PHOTOSHOT] Button.
- When you change to the Still Picture Mode, you will hear a click. This is the sound of the iris closing and not an indication of malfunction.
- If you record still pictures in Progressive Photoshot Mode when your Movie Camera is set to Programme AE (→ 24), the brightness of the images may change.
- When you set the following functions, [PROGRESSIVE] will be set to [OFF].
  - Digital Effect Modes in [EFFECT] (→ 28)
  - Digital Zoom [D.ZOOM] (→ 21)
  - Image Stabilizer Function [SIS] (→ 22)
- When [PROGRESSIVE] is set to [ON], the shutter speed cannot be adjusted to 1/750 s or faster. (→ 26)

**Zoom In/Out Functions**

- When you are zooming on a faraway subject, a sharper focus is achieved if the recording subject is 1.7 metres or more away from the Movie Camera.

## Image Stabilizer Function

- The Image Stabilizer Function does not operate in a dimly lit place. In this case, the [  ] Indication lights up.
- Under fluorescent lighting, image brightness may change or colours may not look natural.
- After-images may appear.
- When a tripod is used, it is recommended that you turn the Image Stabilizer off.

## Cinema Function

- If you play back tape recorded in Cinema Mode on a wide-screen (16:9) format TV, playback size is automatically adjusted to fit the TV screen format. Please refer to the TV's operating instructions for details.
- When images are displayed on a TV screen, the Date/Time Indication may be erased in some cases.

## 0 Lux Night View Function


- The 0 Lux Night View Function should not be used in brightly-lit places, and the Movie Camera should not be directed toward the sun. Otherwise, irreparable damage may occur.
- Scenes taken by the 0 Lux Night View Function are played back in black and white.
- When recording with the 0 Lux Night View Function, operating the shutter speed, iris and white balance is not possible.
- While the 0 Lux Night View Function is operating, you cannot use any of the Programme AE Modes.
- When the 0 Lux Night View Function is in use, the subject should be within 3 metres of the Movie Camera.
- When the automatic focusing is not precise, adjust the focus manually. (→ 27) (In this case, the Manual Focus Mode is activated when the [FOCUS] Button is pressed even then the Movie Camera is in the Full Auto Mode.)

## Programme AE

- If any of the Programme AE Modes is selected, you cannot adjust the shutter speed (→ 26) or iris (→ 27).
- You cannot use Sports Mode, Portrait Mode or Low-Light Mode with Gain-up Mode [GAINUP].

### Sports Mode

- During normal playback, the image movement may not look smooth.
- Because the colour and brightness of the playback image may change, avoid recording under fluorescent light, mercury light, or sodium light.

- If you record a subject illuminated with strong light or a highly reflective subject, vertical lines of light may appear.
- If the light is insufficient, the [  ] Indication flashes.
- If this mode is used for indoor recording, playback images may flicker.

### Sports Mode/Portrait Mode

- If you record a still picture in Progressive Photoshot Mode, the brightness and hue of the recorded still picture may become unstable.

### Low Light Mode

- Extremely dark scenes may not be able to be made brighter to a satisfactory degree.

### Spotlight Mode

- With this mode, recorded images may turn out to be extremely dark.
- If the recording subject is extremely bright, its recorded image may turn out to be whitish.

### Surf & Snow Mode

- If the recording subject is extremely bright, its recorded image may turn out to be whitish.

## White Balance

- You cannot change White Balance if you set [EFFECT] of [DIGITAL EFFECT] Sub-Menu on the [CAMERA FUNCTIONS] Main-Menu to [GAINUP].

### In the following cases, the [ ] Indication flashes:

- The flashing indicates that the previously adjusted White Balance setting is still kept. This setting will be kept until White Balance is adjusted again.
- You may not be able to achieve correct White Balance Adjustment manually under weak illumination.

## Manual Shutter Speed Adjustment

- You may see vertical lines of light in the playback image of a brightly shining subject or highly reflective subject.
- During normal playback, movement in the images may not look smooth.
- Because the colour and brightness of the playback image may become unstable, avoid recording under fluorescent light, mercury light, or sodium light.
- If you are using either Gain-up Mode (→ 28) or Programme AE Mode (→ 24), you cannot adjust the shutter speed. If the shutter speed was adjusted manually, this setting will be cancelled.




## ■ Manual Iris Adjustment

- Depending on zoom magnification, there are iris values that will not be displayed.
- If you are using Programme AE Mode (→ 24), you cannot adjust the iris. If the iris is adjusted manually, this setting will be cancelled.
- If you attempt to adjust the Shutter Speed after setting the Iris, the value set for the Iris will be cancelled.

## ■ Digital Effect Functions

- When you set the following functions, [EFFECT] will be set to [OFF].
  - Progressive Photoshot Function [PROGRESSIVE] (→ 20)
  - Digital Zoom [D.ZOOM] (→ 21)
  - Image Stabilizer Function [SIS] (→ 22)

**It is as follows when [GAINUP] is selected.**

- Manual Focus Mode
- The shutter speed and White Balance cannot be operated.
- The Sports Mode [  ], the Portrait Mode [  ] and Low Light Mode [  ] are cancelled.

## Wipe Mode and Mix Mode

If either one of the following operations is carried out, stored images will be erased, and Wipe and Mix Functions cannot be used.

- Record with Photo Title Function.

## Picture-in-Picture Mode

- If the Movie Camera is turned off, the smaller picture disappears.
- The position of a small picture is fixed at the bottom right of the screen.

## ■ Playing Back

### Repeat Playback

If you continue to press the [▶] Button for 5 seconds or longer, the Movie Camera switches to Repeat Playback Mode, and the [R ▷] Indication appears. (To cancel Repeat Playback Mode, set the [VCR/OFF/CAMERA/M-CARD] Switch to [OFF].)

### Listening to Playback Sound through Headphones

When you wish to listen to playback sound through headphones, set [AV JACK] on the [RECORDING SETUP] Sub-Menu to [OUT/PHONES] and connect the headphones to the [PHONES] Socket (→ 7) on the Movie Camera. In this case, no sound (including a warning sound and shutter sound) will be reproduced through the built-in speaker of the Movie Camera.

## Multi-Picture Mode

- The quality of Multi images deteriorates slightly.
- Playback Multi-Mode screens cannot be output through the DV Terminal (→ 37) or Digital Still Picture Terminal (→ 6).
- If there is input from DV Terminal, a multi screen cannot be created.
- When signals are input from S-Video Input/Output Socket or Audio-Video Input/Output Socket, a Multi Screen cannot be re-displayed.
- Signals input from S-Video Input/Output Socket or Audio-Video Input/Output Socket cannot be displayed on a Multi Screen.

## ■ Index Search Functions

- Index Search may not be possible at the beginning of tape.
- Because Photoshot Index Signals are not recorded on still pictures recorded in Continuous Photoshot Mode, the Photoshot Index Search Function cannot be used for these still pictures.
- Scene Index Search may not function properly if the interval between 2 scene index signals is shorter than 1 minute.

## ■ Playback Digital Effect Functions

- When [EFFECT1] on the [DIGITAL EFFECT] Sub-Menu is set to [TRACER], the digital modes of [EFFECT2] cannot be used.
- Signals of images to which digital effects are added during playback cannot be output from the DV Terminal (→ 6) or Digital Still Picture Terminal (→ 37).
- Even if Playback Digital Zoom Functions are being used, images that are output from the DV Terminal (→ 6) or Digital Still Picture Terminal (→ 37) are not enlarged.
- As you enlarge an image, the quality of image suffers.

## ■ Playing Back on Your TV

- If you set [AV JACK] on the [RECORDING SETUP] Sub-Menu to [IN], nothing will be shown on the TV screen except during playback.



## ■ Audio Dubbing

- The blank section of a tape cannot be dubbed.
- Sounds sent through the DV Terminal cannot be dubbed.
- If a tape has a non-recorded portion when the tape is dubbed, images and sounds may be disturbed when this portion of the tape is played back.
- If you set the tape counter back to 0 at the position where you want to stop Audio Dubbing so as to make it possible to use the Memory Stop Function (→ 56), Audio Dubbing is terminated automatically when the tape reaches this position.
- In the case of importing data recorded with Audio Dubbing to a PC using the PC's software programme, only the original sound (ST1) may be imported, depending on the software programme.

## ■ Recording the Contents of Other Equipment

### Analog-Digital Conversion

- When the Movie Camera is connected with other digital video equipment through its DV Terminal, images recorded in analog form from other external equipment can be output to the digital video equipment through the DV Terminal.

## ■ Using the DV Cable for Recording (Digital Dubbing)

- Regardless of the setting, digital dubbing is carried out automatically in the same audio recording mode as that of the Cassette on the playback-side.
- The images on the monitor of the recording side may be disturbed, but it does not affect the recorded images.
- Even if Playback Digital Effects or Playback Digital Zoom Function have been used, these effects are not output from the DV Terminal.
- Even if you use device equipped with DV Terminals (such as IEEE1394), you may not be able to perform Digital Dubbing in some cases.
- Do not connect both an S-Video Cable or AV Cable and a DV Cable.

## ■ Recording on a Card

- The sound cannot be recorded.
- The Shutter Effect cannot be used.
- Pictures with wide-screen format signals cannot be copied.

## ■ Playing Back a Card

- If a blank (nothing recorded) Card is played, the screen becomes white and the [NO PICTURE] Indication appears.
- If you attempt to play back a still picture recorded in a different format or a picture whose image data is defective, the [INCOMPATIBLE IMAGE] Indication could appear as warning.

- This Movie Camera can also play back the Mega-Pixel still pictures recorded with the other equipment. However it takes longer than usual time.
- When the size of the picture played back is over [1280×960], the picture played back in small size on the LCD Monitor.

## ■ Photo Title

- The Photo Title Function and Digital Function cannot be used simultaneously.
- After recording, the Photo Title setting is cleared automatically.

## ■ Formatting a Card

If a Card becomes unreadable by the Movie Camera, formatting it may make it reusable. Formatting erases all the data recorded on a Card.

- When the formatting is completed, the [NO PICTURE] Indication appears.
- It may not be possible to use the Card which was formatted using this Movie Camera on another unit. In this case, format the Card on the unit which will be using the Card. Take steps to ensure that valuable pictures are stored on the personal computer, etc. as well before proceeding.

## ■ DPOF

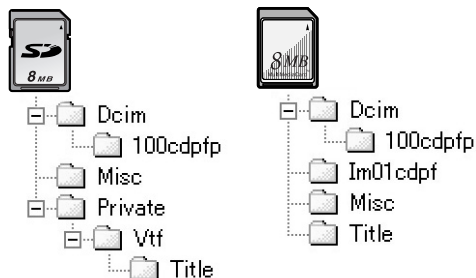
- Perform the DPOF Settings with your own Movie Camera in use.
- Verifying the DPOF Settings may take a little time. Wait until the [ACCESS] Lamp goes out.

## ■ Using a Card in a Personal Computer (NV-DS50 only)

- To erase pictures that you recorded on the Card by using the Movie Camera, be sure to erase them on the Movie Camera, not on the computer.
- Using the optional DV Editing Software (Motion DV STUDIO) for Windows (VW-DTM20/21/22), variety of visual effects can be added and title can be created.
- You may not be able to properly play back or search the images on the Movie Camera after editing the recorded data or changing the image data on a personal computer.
- The image data files recorded on the Card with this Movie Camera conform to the DCF (Design Rules for Camera Files Systems universal standard) stipulated by JEITA (Japan Electronics and Information Technology Industries Association).

## Constructing a Folder when the Card is used with a PC

- When a Card with data recorded on it is inserted into a personal computer, folders will be displayed as in the figure.



[100cdpfp]: The images (Imga0001.jpg, etc.) in this folder are recorded in the JPEG format.

[Misc]: Files in which DPOF Data has been set to the image are in this.

- [Dcim], [Im01cdpf], etc. are necessary items in the folder structure. They have nothing to do with actual operations.
- In the Card Photoshot Mode, the Movie Camera automatically saves file numbers (Imga0001.jpg, etc.) along with the images. The file numbers are recorded with each image as a consecutive number.
- The memory capacity indicated on the SD Card label corresponds to the total amount of the capacity to protect and manage the copyright and of the capacity available as a conventional memory for a Movie Camera, Personal Computer or others.

Capacity that can be used as conventional memory:

8MB Card     about 6,800,000 bytes

## Cautions for Use

In the event of abnormal operation (e.g. if the unit emits smoke or an unusual smell), immediately stop operating the unit and consult the Panasonic Customer Care Centre on 132600.

### After Use

- Take out the Cassette. (→ 12)
- Set the [VCR/OFF/CAMERA/M-CARD] Switch to [OFF].
- Take out the Card. (NV-DS50 only)
- Detach the power supply and retract the Viewfinder or the LCD Monitor. (→ 10, 13)
- To protect the Lens, attach the supplied Lens Cap.

### Cautions for Use

**When you use your Movie Camera in a rainy or snowy day or on a beach, make sure that no water enters inside the Movie Camera.**

- Water may cause the Movie Camera or Cassette to malfunction. (Irreparable failure may occur.)
- If sea water splashes onto the Movie Camera, wet a soft cloth with tap water, wring it well, and use it to wipe the camera body carefully. Then, wipe it again thoroughly with a soft dry cloth.

**Keep the Movie Camera away from magnetized equipment (such as a microwave oven, TV, video game equipment, etc.).**

- If you use the Movie Camera on or near a TV, images or sounds may be disturbed due to electromagnetic wave radiation.
- Do not use near a cell phone because doing so may cause noise to adversely affect the picture and sound.
- By strong magnetic fields created by speakers or large motors, recording on the tape may be damaged, or images may be distorted.
- Electromagnetic wave radiation generated by a microprocessor may adversely affect the Movie Camera, causing the disturbance of images and sounds.
- If the Movie Camera is affected by magnetically charged equipment and does not function properly, turn off the Movie Camera power and detach the Battery or AC Adaptor and then connect the Battery or AC Adaptor again. Thereafter, turn on the Movie Camera power.

**Do not use your Movie Camera near radio transmitters or high-voltage lines.**

- If you record pictures near radio transmitters or high-voltage lines, recorded images or sounds may be adversely affected.

**Do not use this Movie Camera for surveillance purpose or other business use.**

- If you use the Movie Camera for a long period of time, the internal temperature increases and, consequently, this may cause malfunction.
- This Movie Camera is not intended for business use.

**When you use your Movie Camera on a beach or similar place, do not let sand or fine dust get into the Movie Camera.**

- Sand or dust may damage the Movie Camera or Cassette. (Care should be taken when inserting and removing the Cassette.)

**Do not spray insecticides or volatile chemicals onto the Movie Camera.**

- If the Movie Camera is sprayed with such chemicals, the camera body may be deformed and the surface finish may peel off.
- Do not keep rubber or plastic product in contact with the Movie Camera for a long period of time.

**Do not use benzine, thinner or alcohol for cleaning the Movie Camera.**

- The camera body may be deformed and the surface finish may peel off.
- Before cleaning, detach the Battery or pull out the AC Mains Lead from the AC mains socket.
- Wipe the Movie Camera with a soft dry cloth. To remove stubborn stains, wipe with a cloth that is soaked in a detergent diluted with water and afterward finish wiping with a dry cloth.
- For storing or transporting the Movie Camera, place it in a bag or case lined with soft pads so as to prevent the coating on the camera body from being worn.

**After use, be sure to take the Cassette out and detach the Battery from the Movie Camera or pull out the AC Mains Lead from AC mains socket.**

- If the Cassette is left in the Movie Camera, the tape sags and deteriorates.
- If the Battery is left on the Movie Camera for a long time, the voltage drops excessively, and the Battery will not function even after it is recharged.

## ■ About AC Adaptor

- If the temperature of the Battery is extremely high or extremely low, the [CHARGE] Lamp may continue flashing, and the Battery may not be charged. After the temperature of the Battery has decreased or increased sufficiently, charging starts automatically. If the [CHARGE] Lamp continues to flash even after the Battery temperature has decreased or increased sufficiently, the Battery or AC Adaptor may be faulty. In this case, please contact a dealer.
- If the Battery is warm, charging takes a longer time than normal.
- If you use the AC Adaptor near a radio, radio reception may be disturbed. Keep the AC Adaptor 1 metre or more away from radio.
- When the AC Adaptor is in use, it may generate whirring sounds. However, this is normal.
- After use, be sure to pull out the AC Mains Lead from the AC mains socket. (If they are left connected, a minute amount of current is consumed.)
- Keep the electrodes of the AC Adaptor and Battery always clean.

## ■ Condensation

If the Condensation Indication flashes after the Movie Camera is turned on, condensation has formed inside the Movie Camera. In this case, the Movie Camera power is turned off automatically after about 1 minute.

Follow the steps below:

### 1 Take out the Cassette.

- None of the other functions operate. Depending on the amount of condensation, removing the Cassette may even become difficult. If this happens, wait for 2 to 3 hours before taking the Cassette out.

### 2 Open the Cassette Compartment Cover and wait for 2 to 3 hours.

- The number of hours to wait depends on the amount of condensation and ambient temperature.

### 3 2 to 3 hours later, turn on the Movie Camera power and check to see if the Condensation Indication is displayed.

- Even if the Condensation Indication is not displayed, as a precaution, please wait for another hour before using the Movie Camera.

### **Watch for Condensation even before the Condensation Indication is displayed.**

- Because condensation takes place gradually, the Condensation Indication may not be displayed during the first 10 to 15 minutes of condensation formation inside the Movie Camera.
- In extremely cold places, condensation may freeze and form frost. In this case, the frost melts first, thus forming condensation, and then it takes another 2 to 3 hours to eliminate the condensation.

### **When the Lens is Fogged:**

Set the [VCR/OFF/CAMERA/M-CARD] Switch to [OFF] and leave the Movie Camera in this condition for about 1 hour. When the lens temperature becomes close to the ambient temperature, the fog disappears naturally.

### **■ Video Head Clogging and Care**

If the heads (the parts that make contact with tape) are dirty, mosaic-pattern noise may appear on the playback image, or the screen as a whole becomes black. If the heads are extremely dirty, recording performance deteriorates, and, in the worst case, the Movie Camera cannot record at all.

#### **Causes of Dirty Heads**

- Large quantity of dust in the air
- High-temperature and high-humidity environment
- Damaged tape
- Long operating hours

### **Using Mini-DV Format Digital Video Head Cleaner**

- 1 Insert the Head Cleaner into the Movie Camera in the same manner as a Video Cassette.**
- 2 Press the [▶] Button, and approximately 20 seconds later, press the [■] Button. (Do not rewind the tape.)**
- 3 Take out the Head Cleaner. Insert a Video Cassette and start recording. Then, play the tape back to check the recorded image.**
- 4 If the image is not still clear, repeat Steps 1 to 3. (Do not use the Head Cleaner for 3 times or more consecutively.)**

#### **Notes:**

- Do not rewind every time you use the Head Cleaner. Rewind only when the tape reaches the end, and then use it again from the beginning in the same manner as before.
- If the heads become dirty soon after cleaning, the tape may be damaged. In this case, immediately stop using that Cassette.

- Do not clean the heads excessively. (Excessive cleaning may cause excessive wear of the heads. If the heads are worn, images cannot be played back even after the heads are cleaned.)
- If the dirty heads cannot be cleaned with the Head Cleaner, the Movie Camera needs to be cleaned at a service centre. Please consult a dealer.
- Video Head Cleaners can be purchased from service centres.
- Head cleaning due to dirty heads is not considered a malfunction of the product. It is not covered by the warranty.

### **Periodical Check-up**

To maintain the highest image quality, we recommend replacement of worn parts, such as heads, etc., after approximately 1000 hours of use. (This, however, depends on operating conditions, such as temperature, humidity, dust, etc.)

### **■ Optimal Use of the Battery**

#### **Battery Characteristics**

This Battery is a rechargeable lithium ion battery. Its ability to generate power is based upon the chemical reaction that takes place inside it. This reaction is susceptible to the surrounding temperature and humidity, and, if the temperature is too high or too low, the operating time of the Battery becomes shorter. If the Battery is used in an extremely cold environment, the Battery may operate only for about 5 minutes. If the Battery becomes extremely hot, a protective function may operate, and the Battery may become unusable for a while.

#### **Be Sure to Detach the Battery after Use**

Be sure to detach the Battery from the Movie Camera. (If it is left attached to the Movie Camera, a minute amount of current is consumed even when the Movie Camera power is off.) If the Battery is left attached to the Movie Camera for a long time, over discharge takes place. The Battery may become unusable after it is charged.

#### **Disposing of an Unusable Battery**

- The Battery has a limited life.
- Do not throw the Battery into fire because it may cause an explosion.

#### **Always Keep the Terminals of the Battery Clean**

Prevent the terminals from getting clogged with dirt, dust, or other substances.

If you drop the Battery accidentally, check to see if the Battery body and terminals are deformed. Attaching a deformed Battery to the Movie Camera or AC Adaptor may damage the Movie Camera or AC Adaptor.

## ■ Cautions for Storage

### **Before storing the Movie Camera, take the Cassette out and detach the Battery.**

Store all the components in a dry place with a relatively stable temperature.

(Recommended Temperature: 15 to 25°C,  
Recommended Humidity: 40 to 60%)

#### **Movie Camera**

- Wrap it with a soft cloth to prevent dust from getting into the Camera.
- Do not leave the Movie Camera in places that expose it to high temperature.

#### **Battery**

- Extremely high temperatures or low temperatures will shorten the life of the Battery.
- If the Battery is kept in smoky or dusty places, the terminal may rust and cause malfunctions.
- **Do not allow the Battery terminals to come in contact with metal objects (such as necklaces, hairpins, etc.). This can result in a short circuit or heat generation and, if you touch the Battery in this condition, you may be badly burned.**
- Store the Battery in a completely discharged state. To store the Battery for a long period of time, we recommend you charge it once every year and store it again after you completely use up the charged capacity.

#### **Cassette**

- Before storing it, rewind the tape to the beginning. If the Cassette is left for more than 6 months with the tape stopped midway, the tape sags (although it depends on the storage condition). Be sure to rewind to the beginning.
- Store the Cassette in its case. Dust, direct sunlight (ultraviolet rays), or humidity may damage the tape. Dust contains hard mineral particles, and dusty Cassettes damage the heads of the Movie Camera and other components. Develop a habit of returning the Cassette back to its case.
- Once every half year, wind the tape to the end and then rewind it to the beginning. If the Cassette is left for 1 year or longer without winding or rewinding, temperature and humidity changes may cause the Cassette to deform due to swelling, shrinking, and so forth. The wound tape may stick to itself.
- Do not place a Cassette near highly magnetic substances or equipment.

- The surface of tape is covered with extremely minute magnetic particles, upon which signals are recorded. Magnetic necklaces, toys, etc., have magnetic force that is stronger than you may normally expect, and they may erase the contents of a recording or may cause noise in images and sounds.

#### **Card (NV-DS50 only)**

- After usage, store the supplied SD memory card in the enclosed bag.
- When the Card is being read, do not remove the Card, turn off the power, or subject it to vibration or impact.
- Do not leave the Card in places where there is high temperature or direct sunlight, or where electromagnetic waves or static electricity are easily generated.
- Do not bend or drop the Card. The Card or the recorded content may be damaged.
- After use, be sure to remove the Card from the Movie Camera.
- Do not touch the terminals on the back of the Card with your fingers. Do not allow dirt, dust or water to enter it.

## ■ LCD Monitor/Viewfinder/Lens

#### **LCD Monitor**

- In a place with drastic temperature changes, condensation may form on the LCD Monitor. Wipe it with soft dry cloth.
- If your Movie Camera is extremely cold when you turn its power on, the image on the LCD Monitor is slightly darker than usual at first. However, as the internal temperature increases, it goes back to the normal brightness.

.....

Extremely high precision technology is employed to produce the LCD Monitor screen featuring a total of approximately 110,000 pixels. The result is more than 99.99% effective pixels with a mere 0.01% of the pixels inactive or always lit. However, this is not a malfunction and does not affect the recorded picture.

.....

#### **Viewfinder**

- Do not direct the Viewfinder or Lens to the sun. Internal components may be seriously damaged.
- When the Movie Camera is used with a large capacity Battery (CGP-D28S/CGP-D320, CGA-D54S; optional) attached to it, it is not practical to look in the Viewfinder from behind the Battery. In this case, lift up the Viewfinder to an easy-to-see angle.

.....

Extremely high precision technology is employed to produce the Viewfinder screen featuring a total of approximately 63,200 pixels. The result is more than 99.99% effective pixels with a mere 0.01% of the pixels inactive or always lit. However, this is not a malfunction and does not affect the recorded picture.

.....

## Lens

- If you push the [W/T] Lever toward [W] during recording with the optional filter or conversion lens attached to the Movie Camera, 4 corners of the image may become dark (vignetting). For details, please refer to the operating instructions of your accessories.

## ■ Built-in Video Light

- The temperature of the Video Light may become very hot, therefore, be careful not to touch the glass part of the front of the Movie Camera, when using the Video Light for a long time.
- The life of the electric bulb of the Video Light is limited, and when it burns out, please consult with your local Panasonic Dealer.

## ~~~~~ *Before Requesting Repair* *(Problems and Solutions)*

### Power

- 1: The Movie Camera power cannot be turned on.**
  - 1: Is the power source connected correctly? (→ 10)
- 2: The Movie Camera power is turned off automatically.**
  - 2: If you leave the Movie Camera in Recording Pause Mode for more than 6 minutes, the power is turned off automatically to protect the tape and to save the Battery power. (→ 18)
- 3: The Movie Camera power does not stay on long enough.**
  - 3-1: Is the Battery low? Charge the Battery or attach a fully charged Battery. (→ 10)
  - 3-2: Has condensation occurred? Wait until the Condensation Indication disappears. (→ 51)

### Battery

- 1: Battery runs down quickly.**
  - 1-1: Is the Battery fully charged? Charge it with the AC Adaptor. (→ 10)
  - 1-2: Are you using the Battery in an extremely cold place? In cold places, the operating time of the Battery becomes shorter. (→ 52)

- 1-3: Has the Battery worn out? If the operating time is still too short even after the Battery is fully charged, the Battery has worn out.
- 2: The Battery cannot be charged.**
  - 2: If the DC Input Lead is connected to the AC Adaptor, charging cannot be performed. Disconnect the DC Input Lead.

### Normal Recording

- 1: Recording does not start although power is supplied to the Movie Camera and the Cassette is correctly inserted.**
  - 1-1: Is the accidental erasure prevention slider on the Cassette open? If it is open (set to [SAVE]), recording cannot be performed. (→ 12)
  - 1-2: Is the tape wound to the end? Insert a new Cassette. (→ 12)
  - 1-3: Is the [VCR/OFF/CAMERA/M-CARD] Switch set to [CAMERA]? If it is set to the other position, the recording function cannot be used. (→ 18)
  - 1-4: Has condensation occurred? Wait until the Condensation Indication disappears. (→ 51)

### Other Recording

- 1: Auto Focus Function does not work.**
  - 1-1: Is Manual Focus Mode selected? If Auto Focus Mode is selected, focus is automatically adjusted. (→ 27)
  - 1-2: There are some recording subjects and recording surroundings for which the Auto Focus Function does not operate correctly. In this case, use the Manual Focus Mode to adjust the focus. (→ 56)

### Editing

- 1: Audio dubbing cannot be performed.**
  - 1-1: Is the accidental erasure prevention slider on the Cassette open? If it is open (set to [SAVE]), recording cannot be performed. (→ 12)
  - 1-2: Are you attempting to edit a tape portion that was recorded in LP Mode? LP Mode does not allow audio dubbing to operate. (→ 19)

### Indications

- 1: The Time Code becomes inaccurate.**
  - 1: The Time Code Indication counter may not be constant in the reverse direction in Slow Motion Playback Mode, but this is not a malfunction.
- 2: The Remaining Tape Time Indication disappears.**
  - 2: When you record still pictures in Photoshot Mode, the Remaining Tape Time Indication may disappear temporarily. However, it reappears when recording normally.

- 3: The Remaining Tape Time Indication does not match the actual remaining tape time.**
- 3-1: If scenes of less than 15 seconds are continuously recorded, the remaining tape time cannot be displayed correctly.
- 3-2: In some cases, the Remaining Tape Time Indication may show remaining tape time that is 2 to 3 minutes shorter than the actual remaining tape time.

#### **Playback (Images)**

- 1: Images cannot be played back even when the [▶] Button is pressed.**
- 1: Is the [VCR/OFF/CAMERA/M-CARD] Switch set to [VCR]? If it is set to the other position, the playback function cannot be used. (→ 30)
- 2: Mosaic-pattern noise appears on images during Cue, Review or Slow Motion Playback.**
- 2: This phenomenon is characteristic of digital video systems. It is not a malfunction.
- 3: Although the Movie Camera is correctly connected to a TV, playback images cannot be seen.**
- 3: Have you selected "Video Input" on the TV? Please read the operating instructions of your TV and select the channel that matches the input sockets used for the connection.
- 4: Playback image is not clear.**
- 4: Are the heads of the Movie Camera dirty? If the heads are dirty, playback image cannot be clear. (→ 52)

#### **Playback (Sound)**

- 1: Sound is not played back from the built-in speaker of the Movie Camera or the headphones.**
- 1: Is the volume too low? Push the [VOLUME] Lever to adjust the volume. (→ 30)
- 2: Different sounds are reproduced at the same time.**
- 2: [12bit AUDIO] on the [PLAYBACK FUNCTIONS] Sub-Menu of the [VCR FUNCTIONS] Main-Menu has been set to [MIX]. As a result, the original sound and sound that was recorded by audio dubbing are played back together. It is possible to reproduce the sounds separately. (→ 35)
- 3: The original sound was erased when audio dubbing was performed.**
- 3: If you perform audio dubbing on a recording done in [16bit] Mode, the original sound will be erased. If you wish to preserve the original sound, be sure to select [12bit] Mode at the time of recording.

#### **4: Sounds cannot be played back.**

- 4-1: Although a Cassette with no audio dubbing is being played, is [12bit AUDIO] on the [PLAYBACK FUNCTIONS] Sub-Menu of the [VCR FUNCTIONS] Main-Menu set to [ST2]? To play back a Cassette with no audio dubbing, [12bit AUDIO] must be set to [ST1]. (→ 35)
- 4-2: Is the Variable Speed Search Function working? Press the [▶] Button to cancel the Variable Speed Search Function. (→ 31)

#### **Card (NV-DS50 only)**

- 1: Card Photoshot Playback images do not look normal.**
- 1: The picture may be damaged. In order to prevent the loss of image data, backing up on a personal computer is recommended. (→ 37, 49)
- 2: During Playback the [×] Indication is displayed.**
- 2: The image was either recorded in a different format, or data is damaged.
- 3: Even if a Card is formatted, it cannot be used.**
- 3: Either the Movie Camera or the Card may be damaged. Please consult a dealer.

## ~~~~~ **Explanation of Terms**

### **■ Digital Video System**

In a digital video system, images and sounds are converted into digital signals and recorded on a tape. This complete digital recording is capable of recording and playback with minimal image and sound deterioration.

In addition, it automatically records data, such as Time Code and Date/Time, as digital signals.

#### **Compatibility with S-VHS or VHS Cassettes**

Because this Movie Camera employs a digital system for recording image and sound data, it is not compatible with conventional S-VHS or VHS video equipment that employs an analog recording system.

The size and shape of the Cassette are also different.

#### **Compatibility with Output Signals**

Because AV signal output from the AV signal output socket is analog (the same as conventional video systems), this Movie Camera can be connected with S-VHS or VHS video or a TV for playback.

## ■ Focus

### Auto Focus Adjustment

The Auto Focus System automatically moves forward and backward the focusing lens inside the Movie Camera to bring the subject into focus so that the subject can be seen clearly.

However, the Auto Focus System does not function properly for the following subjects or under the following recording conditions.

**Please use the Manual Focus Mode instead.**

- 1) **Recording a subject whose one end is located closer to the Movie Camera and the other end farther away from it**
  - Because Auto Focus makes adjustments at the centre of an image, it may be impossible to focus on a subject that is located in both foreground and background.
- 2) **Recording a subject behind dirty or dusty glass**
  - Because the focus is on the dirty glass, the subject behind the glass will not be focused.
- 3) **Recording a subject in dark surroundings**
  - Because the light information that comes through the lens decreases considerably, the Movie Camera cannot focus correctly.
- 4) **Recording a subject that is surrounded by objects with glossy surfaces or by highly reflective objects**
  - Because the Movie Camera focuses on the objects with glossy surfaces or on highly reflective objects, the recording subject may become blurry.
- 5) **Recording a fast-moving subject**
  - Because the focus lens inside moves mechanically, it cannot keep up with the fast-moving subject.
- 6) **Recording a subject with little contrast**
  - Because the Movie Camera achieves focus based upon the vertical lines of an image, a subject with little contrast, such as a white wall, may become blurry.

## ■ White Balance Adjustment

Depending on the type of light source, the colours recorded by the Movie Camera may be affected. In some cases, images may be recorded with bluish or reddish hue. To minimize the effect of light on the subject's colour, what is called White Balance Adjustment becomes necessary.

### White Balance Adjustment

White Balance Adjustment recognizes the colour of light and makes adjustment so that the white colour will become pure white.

## Automatic White Balance Adjustment

This Movie Camera stores settings that are optimal for several kinds of general light sources. The Movie Camera determines the hue of light that it receives through the Lens, thereby judging the recording condition, and selects the closest hue setting. This function is called Automatic White Balance Adjustment.

However, since white balance settings for only several kinds of light sources are stored, the Auto White Balance Function does not operate properly when recording occurs under light that is out of the range of the setup values.

## ■ Time Code

Time Code signals are data that indicate time measured in hours, minutes, seconds, and frames (25 frames per second). If this data is included in a recording, an address is assigned to each image on the tape.

- The Time Code is automatically recorded as a part of the sub-code at each recording.
- When a new (previously unrecorded) Cassette is inserted, the Time Code automatically starts from zero. If a recorded Cassette is inserted, the Time Code picks up from the point where the last scene was recorded. (In this case, when the Cassette is inserted, the zero display [0h00m00s00f] may appear, but the Time Code starts from the previous value.)
- The Time Code cannot be reset to zero.
- Unless the Time Code is continuously recorded from the beginning of a tape, accurate editing may not be possible. To ensure that the Time Code will be recorded with no breaks, we recommend the use of the Blank Search Function (→ 32) before recording a new scene.

## ■ Memory Stop Function

The Memory Stop Function is useful for the following operations.

**Rewinding or fast-forwarding a tape to a desired position**

- 1 **Set [DISPLAY SETUP] >> [C.DISPLAY] >> [MEMORY].**
- 2 **Reset the Tape Counter to zero at the tape position from which you want to play it back later. (→ 8, 15)**
- 3 **Start playback or recording.**
- 4 **After playback or recording has finished:  
Set the [VCR/OFF/CAMERA/M-CARD] Switch to [VCR].**



## 5 Rewind the tape.

- The tape automatically stops approximately at the position where the counter was set to zero.

### Stopping editing automatically during audio dubbing

#### 1 Set [DISPLAY SETUP] >> [C.DISPLAY] >> [MEMORY].

#### 2 Reset the Tape Counter to zero at the position where you want to stop editing.

#### 3 Play back the still picture where you want to start audio dubbing.

#### 4 Start audio dubbing. (→ 35)

- Audio dubbing automatically stops at the position where the counter was set to zero.

## Owner ID

You can register your name and address in your Movie Camera to identify the owner.

#### 1 Set [CAMERA FUNCTIONS] >> [OTHER FUNCTIONS] >> [OWNER ID SET] >> [ON].

- The [OWNER ID] Menu appears.

#### 2 Turn the [PUSH] Dial to select [PIN NUMBER] and press the [PUSH] Dial to input desired numbers.

#### 3 Turn the [PUSH] Dial to select numbers and press the [PUSH] Dial to enter them.

- You can input 4 digits.

#### 4 Press the [■] Button.

#### 5 Repeat Steps 2–4 to input desired characters for [NAME] and [POSTCODE].

- You can input up to 12 characters in [NAME], and up to 11 characters in [POSTCODE].

#### 6 Press the [■] Button to finish the setup.

### To verify Owner ID

- Keep pressing the [■] Button for approximately 5 seconds.

### To Check Owner ID

If Owner ID has already been set, carrying out Step 1 above will display [INPUT PIN NUMBER] on the screen. Input the Pin Number you have already selected. If the number is not correct, the screen will not change. If the number is correct, the contents of the setup will be displayed. (By repeating Steps 2 to 4 above, you can change the contents.)

## Demonstration Mode

If no operation takes place for approximately 10 minutes after the AC Adaptor was connected to the Movie Camera and the [VCR/OFF/CAMERA/M-CARD] Switch was turned to [CAMERA] without inserting a Cassette, the Movie Camera is automatically set to Demonstration Mode for introducing its functions. If any button is pressed or operated, the Demonstration Mode is cancelled. The Demonstration Mode can be started by setting [DEMO MODE] on the [OTHER FUNCTIONS] Sub-Menu of the [CAMERA FUNCTIONS] Main-Menu to [ON] and by exiting the Menu. To terminate the Demonstration Mode, insert a Cassette or set the [DEMO MODE] to [OFF].

# Specifications

| Digital Video Camera       | Information for your safety                                                                                                                                                                    |
|----------------------------|------------------------------------------------------------------------------------------------------------------------------------------------------------------------------------------------|
| Power Source:              | DC 7.9/7.2 V                                                                                                                                                                                   |
| Power Consumption:         | <b>(NV-DS30)</b> Recording<br>2.9 W (When using Viewfinder)<br>4.5 W (When using LCD Monitor)<br><b>(NV-DS50)</b> Recording<br>3.3 W (When using Viewfinder)<br>4.9 W (When using LCD Monitor) |
| Recording Format:          | Mini DV (Consumer-use Digital Video SD Format)                                                                                                                                                 |
| Tape Used:                 | 6.35 mm digital video tape                                                                                                                                                                     |
| Recording/Playback Time:   | SP: 80 min.; LP: 120 min. (with DVM80)                                                                                                                                                         |
| Video                      |                                                                                                                                                                                                |
| Recording System:          | Digital Component                                                                                                                                                                              |
| Television System:         | CCIR: 625 lines, 50 fields PAL colour signal                                                                                                                                                   |
| Audio                      |                                                                                                                                                                                                |
| Recording System:          | PCM Digital Recording<br>16 bit (48 kHz/2ch),<br>12 bit (32 kHz/4ch)                                                                                                                           |
| Image Sensor:              | 1/4-inch CCD Image Sensor                                                                                                                                                                      |
| Lens:                      | Auto Iris, F1.8, Focal Length;<br>3.6–36 mm,<br>Macro (Full Range AF)                                                                                                                          |
| Filter Diameter:           | 43 mm                                                                                                                                                                                          |
| Zoom:                      | 10:1 Power Zoom                                                                                                                                                                                |
| Monitor:                   | 2.5-inch LCD                                                                                                                                                                                   |
| Viewfinder:                | Electronic Viewfinder                                                                                                                                                                          |
| Microphone:                | Stereo                                                                                                                                                                                         |
| Speaker:                   | 1 round speaker $\varnothing$ 20 mm                                                                                                                                                            |
| Standard Illumination:     | 1,400 lx                                                                                                                                                                                       |
| Minimum Required           |                                                                                                                                                                                                |
| Illumination:              | 1 lx (Digital Gain-up Mode)                                                                                                                                                                    |
| Video Output Level:        | 1.0 Vp-p, 75 ohm                                                                                                                                                                               |
| S-Video Output Level:      | Y Output: 1.0 Vp-p, 75 ohm<br>C Output: 0.3 Vp-p, 75 ohm                                                                                                                                       |
| Audio Output Level (Line): | 316 mV, 600 ohm                                                                                                                                                                                |
| Video Input Level:         | 1.0 Vp-p, 75 ohm                                                                                                                                                                               |
| S-Video Input Level:       | Y Input: 1.0 Vp-p, 75 ohm<br>C Input: 0.3 Vp-p, 75 ohm                                                                                                                                         |
| Audio Input Level (Line):  | 316 mV, 10 kohm or more                                                                                                                                                                        |
| Mic Input:                 | Mic sensitivity –50 dB<br>(0 dB=1 V/Pa, 1 kHz)<br>(Stereo mini jack)                                                                                                                           |
| Digital Still Picture:     | <b>(NV-DS30 only)</b><br>Digital Still Picture Output,<br>Control<br>Signal Input/Output<br>(Transfer rate: max. 115 kbps)                                                                     |
| Digital Interface:         | DV Input/Output Terminal<br>(IEEE1394, 4-pin)                                                                                                                                                  |
| USB:                       | <b>(NV-DS50 only)</b><br>Card reader/writer function,<br>USB 1.1 compliant (max.<br>12Mbps)                                                                                                    |
| Dimensions:                | Approx. 74 (W)×89 (H)×188 (D) mm                                                                                                                                                               |

|                        |                                                                                                                                                                                                                                  |
|------------------------|----------------------------------------------------------------------------------------------------------------------------------------------------------------------------------------------------------------------------------|
| Weight:                | <b>(NV-DS30)</b><br>Approx. 570 g (without Battery and DV cassette)<br>Approx. 650 g (with CGR-D08R and DVM60)<br><b>(NV-DS50)</b><br>Approx. 580 g (without Battery and DV cassette)<br>Approx. 660 g (with CGR-D08R and DVM60) |
| Operating Temperature: | 0 °C—40 °C                                                                                                                                                                                                                       |
| Operating Humidity:    | 10%—80%                                                                                                                                                                                                                          |
| Card Memory Functions  | <b>(NV-DS50 only)</b>                                                                                                                                                                                                            |
| Recording Media:       | MultiMediaCard, SD Memory Card                                                                                                                                                                                                   |
| Image Compression:     | JPEG                                                                                                                                                                                                                             |

| AC Adaptor                                                                                       | Information for your safety                                                  |
|--------------------------------------------------------------------------------------------------|------------------------------------------------------------------------------|
| Power Source:                                                                                    | AC 100–240 V, 50/60 Hz                                                       |
| Power Consumption:                                                                               | 20 W                                                                         |
| DC Output:                                                                                       | DC 7.9 V, 9 W (Movie Camera Operation)<br>DC 8.4 V, 1.2 A (Battery Charging) |
| Dimensions:                                                                                      | 70 (W)×45 (H)×116 (D) mm                                                     |
| Weight:                                                                                          | Approx. 165 g                                                                |
| Weight and dimensions are approximate values.<br>Specifications may change without prior notice. |                                                                              |

# Index

## A

|                                          |        |
|------------------------------------------|--------|
| AC Adaptor .....                         | 10, 51 |
| Audio Dubbing .....                      | 35     |
| Auto Focus .....                         | 56     |
| Automatic White Balance Adjustment ..... | 56     |

## B

|                              |    |
|------------------------------|----|
| Backlight Compensation ..... | 23 |
| Black & White Mode .....     | 34 |
| Blank Search .....           | 32 |

## C

|                            |    |
|----------------------------|----|
| Card Photoshot .....       | 39 |
| Card Playback .....        | 40 |
| Charging the Battery ..... | 10 |
| Cinema Mode .....          | 23 |
| Condensation .....         | 51 |
| Continuous Photoshot ..... | 20 |
| Cue Playback .....         | 31 |

## D

|                             |        |
|-----------------------------|--------|
| Date/Time Indication .....  | 45     |
| Date/Time Setting .....     | 17     |
| DCF .....                   | 49     |
| Digital Effects .....       | 28     |
| Digital Still Picture ..... | 20     |
| Digital Zoom .....          | 21     |
| DPOF Setting .....          | 43     |
| Dubbing .....               | 36, 37 |

## E

|                                 |    |
|---------------------------------|----|
| Erasurc Prevention Slider ..... | 12 |
|---------------------------------|----|

## F

|                  |    |
|------------------|----|
| F Number .....   | 27 |
| Fade .....       | 22 |
| Formatting ..... | 49 |

## G

|                    |    |
|--------------------|----|
| Gain-up Mode ..... | 28 |
|--------------------|----|

## H

|                  |    |
|------------------|----|
| Headphones ..... | 48 |
|------------------|----|

## I

|            |    |
|------------|----|
| Iris ..... | 27 |
|------------|----|

## J

|                    |    |
|--------------------|----|
| Jog Playback ..... | 32 |
|--------------------|----|

## L

|                      |    |
|----------------------|----|
| LCD Monitor .....    | 13 |
| Low Light Mode ..... | 24 |

## M

|                      |    |
|----------------------|----|
| Macro Close-up ..... | 21 |
| Manual Focus .....   | 27 |
| Memory Stop .....    | 56 |
| Menu Screen .....    | 14 |
| Microphone .....     | 21 |

|                   |    |
|-------------------|----|
| Mirror Mode ..... | 28 |
| Mix Mode .....    | 28 |
| Mosaic Mode ..... | 28 |

## P

|                                |        |
|--------------------------------|--------|
| Photo Title .....              | 41     |
| Photoshot .....                | 20, 39 |
| Picture in Picture Mode .....  | 28     |
| Playback Digital Effects ..... | 34     |
| Playback Zoom .....            | 34     |
| Portrait Mode .....            | 24     |
| Programme AE .....             | 24     |

## R

|                            |    |
|----------------------------|----|
| Recording Check .....      | 18 |
| Recording Pause Mode ..... | 18 |
| Recording Speed .....      | 19 |
| Remaining Tape Time .....  | 44 |
| Remote Controller .....    | 8  |

## S

|                              |    |
|------------------------------|----|
| Self-Recording .....         | 19 |
| Sepia Mode .....             | 34 |
| Shutter Speed .....          | 26 |
| Slim Mode .....              | 28 |
| Slow Motion Playback .....   | 31 |
| Sound Volume .....           | 30 |
| SP/LP Mode .....             | 19 |
| Sports Mode .....            | 24 |
| Spotlight Mode .....         | 24 |
| Still Advance Playback ..... | 32 |
| Stretch Mode .....           | 28 |
| Strobe Mode .....            | 28 |
| Surf & Snow Mode .....       | 24 |

## T

|                            |    |
|----------------------------|----|
| Time Code .....            | 56 |
| Trailing Effect Mode ..... | 28 |

## U

|                          |    |
|--------------------------|----|
| USB Connection Kit ..... | 43 |
|--------------------------|----|

## V

|                             |        |
|-----------------------------|--------|
| Variable Speed Search ..... | 31     |
| Video Head Clogging .....   | 52     |
| Viewfinder .....            | 13, 53 |

## W

|                     |    |
|---------------------|----|
| White Balance ..... | 56 |
| Wipe Mode .....     | 28 |

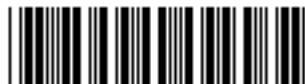
## Z

|                       |    |
|-----------------------|----|
| Zoom .....            | 21 |
| Zoom Microphone ..... | 21 |



VQT9695

F0102Me0 ( 6500 (A))



**Matsushita Electric Industrial Co., Ltd.**

Web site: <http://www.panasonic.co.jp/global/>