

RTi SERIES LOUDSPEAKERS

REAL WOOD, REAL HIGH PERFORMANCE



SERIES | CATALOG

polkaudio®

RTi SERIES LOUDSPEAKERS

The new RTi Series incorporates our latest Dynamic Balance® Cone drivers, 1" tweeters and elegantly redesigned cabinets that reflect the latest styles. As you can expect from this highly popular line, the performance is classic Polk Audio®. The bass/midrange drivers used throughout the RTi, CSi, F/X®i series employ Dynamic Balance polymer/mineral composite cones with rubber surrounds. Mylar bypass capacitors in the crossovers extend high frequency response and improve detail and transparency. RTi is Timbre-matched to the Polk® TCi in-ceiling/wall series so you can create a seamless, multi-channel system.

RTi TOWERS

- 1" is a silk/polymer composite dome tweeter for smoother response and better detail.
- A neodymium magnet, low-viscosity ferro-fluid cooling, and a heat sink on the back of the magnet, create better power handling and reliability.
- PowerPort® Plus is a patented enclosure venting technology for maximum bass performance.
- Magnetically shielded to allow safe placement next to televisions or video monitors.
- Dual 5-way binding posts allow bi-wiring and bi-amplification and accepts a variety of wiring connectors.
- Damped Asymmetric Hex Laminate Isolation (DAHLI) cabinet design for clean, accurate sound.
- Finished in cherry or black oak real wood veneer.
- Anti-Diffraction grilles minimize grille diffraction for spacious, 3 dimensional imaging.

RTiA9

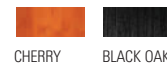
- The flagship of the RTi series.
- Three long-throw 7" woofers to combine the wide dynamic range benefits of a single large woofer with the tight, punchy, accurate bass response of small woofers. Combined with PowerPort Plus, these multiple woofers deliver deep high impact bass with speed and accuracy.
- Two 5 1/4" midrange drivers housed in their own dedicated midrange enclosure provide exceptionally detailed, powerful midrange.
- Recommended amplifier power 50-500 Watts/channel.

OVERALL DIMENSIONS:

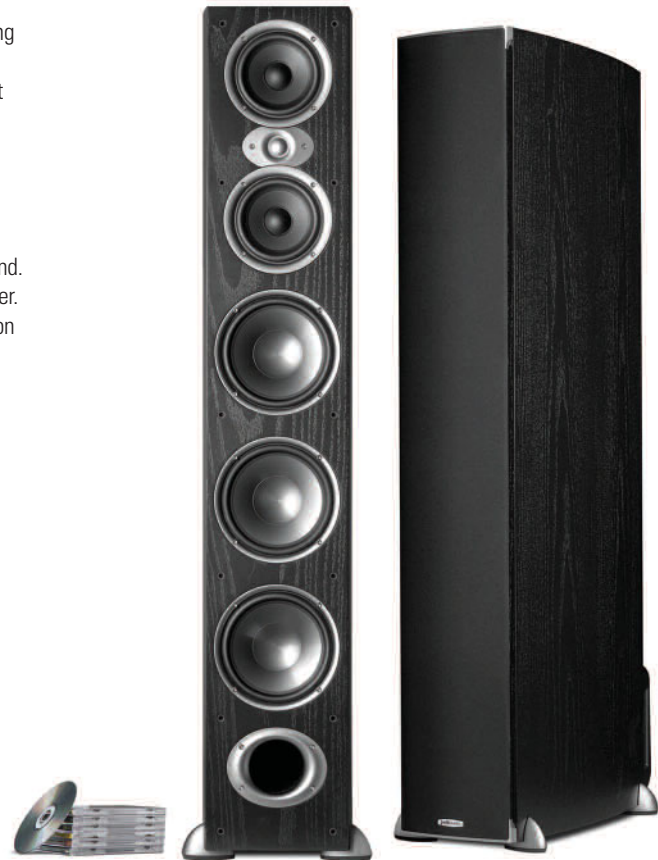
48 5/8" H X 8 7/8" W X 21 3/8" D (123.51CM H X 22.54CM W X 54.29CM D)

OVERALL FREQUENCY RESPONSE: 18Hz - 27kHz

SEE SPECIFICATIONS FOR MORE DETAILED PRODUCT INFORMATION.



CHERRY BLACK OAK



RTiA9

polk
technology

DAHLI

Damped Asymmetric Hex Laminate Isolation (DAHLI) Cabinet Design for clean, accurate sound. The asymmetric design is made from a 6-layer laminate with 5 viscous layers to create the Optimal Shear Damping (OSD) system. The process was specifically developed for Polk. Their elegant styling aside, creating curved cabinets not only results in a stronger, more rigid and acoustically inert enclosure, but the curved walls also produce less audible coloration from panel resonances.

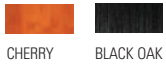


RTiA7

- Approaches performance of the RT/A9
- 6 1/2" midrange driver, with ARC® (Acoustic Resonance Control) Port reduces midrange "boom" for clear, natural midrange.
- Two long-throw 7" woofers for tight, punchy and articulate bass response.
- Recommended amplifier power 20-300 Watts/channel.

OVERALL DIMENSIONS:
42 1/4" H X 8 7/8" W X 17 7/8" D (107.31CM H X 22.54CM W X 45.40CM D)
OVERALL FREQUENCY RESPONSE: 20HZ - 27KHZ

SEE SPECIFICATIONS FOR MORE DETAILED PRODUCT INFORMATION.

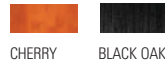


RTiA5

- Smallest footprint in the RTi floorstanding series.
- Two 6 1/2" Polymer Composite Dynamic Balance mid/woofer with rubber surrounds.
- ARC® (Acoustic Resonance Control) Port reduces midrange "boom" for clear, natural mids.
- Recommended amplifier power 20-250 watts/channel.

OVERALL DIMENSIONS:
40 1/4" H X 8 7/16" W X 15 3/4" D (102.23CM H X 21.43CM W X 40.01CM D)
OVERALL FREQUENCY RESPONSE: 30HZ - 27KHZ

SEE SPECIFICATIONS FOR MORE DETAILED PRODUCT INFORMATION.



RTiA7



RTiA5

POWERPORT® PLUS

The floorstanding models, RTiA9, RTiA7 and RTiA5 feature PowerPort Plus an enhancement in PowerPort technology. PowerPort Plus uses two ports (one front, one rear) and internal "plates" to further reduce air turbulence and increase bass efficiency. A computer designed tweeter faceplate radius, tapered enclosure and baffle edge radius all contribute to minimizing diffraction for more open and spacious imaging.



polk
technology

BOOKSHELF LOUDSPEAKERS

- 1" silk/polymer composite dome tweeter for smoother response and better detail. A neodymium magnet with low-viscosity ferro-fluid cooling and a heat sink on the back of the tweeter assembly create better power handling and reliability.
- PowerPort with integral wall mount reduces turbulence at the mouth of the port.
- ARC (Acoustic Resonance Control) Port reduces midrange "boom" for clear, natural midrange.
- Magnetically Shielded to allow safe placement next to CRT televisions or video monitors.
- Dual 5-way binding posts allow bi-wiring and bi-amplification and also accepts a variety of wiring connectors.
- Damped Asymmetric Hex Laminate Isolation (DAHLI) cabinet design for clean, accurate sound.
- Finished in Cherry or Black Oak real wood veneer.
- Anti-Diffraction Grilles minimize grille diffraction for spacious, 3 dimensional imaging.

RTiA3

- High performance bookshelf speaker.
- 6 1/2" polymer composite Dynamic Balance mid/woofer with rubber surround.
- Recommended amplifier power 20-125 Watts/channel.

OVERALL DIMENSIONS:
 14 3/4" H X 8 7/16" W X 14" D (37.47CM H X 21.43CM W X 35.56CM D)
 OVERALL FREQUENCY RESPONSE: 40Hz - 27kHz.

SEE SPECIFICATIONS FOR MORE DETAILED PRODUCT INFORMATION.



RTiA1

- Compact bookshelf speaker.
- 5 1/4" polymer composite Dynamic Balance mid/woofer with rubber surround.
- Recommended amplifier power 20-125 Watts/channel.

OVERALL DIMENSIONS:
 12" H X 7 3/8" W X 11 1/2" D
 (30.48CM H X 18.73CM W X 29.21CM D)
 OVERALL FREQUENCY RESPONSE: 50Hz - 27kHz.

SEE SPECIFICATIONS FOR MORE DETAILED PRODUCT INFORMATION.



RTiA3

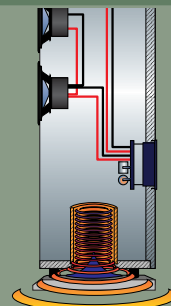


RTiA1



POWERPORT®

Polk Audio loudspeakers shatter the boundaries of bass response with patented PowerPort bass venting technology. Conventional ports have limitations: air turbulence at the mouth of the port can cause "port noise" and bass output losses of up to 3dB. (A loss of 3dB means that half of your amplifier power is being wasted on turbulence instead of bass!) The distinctive design of the Polk Audio PowerPort gradually slows air exiting the port, vastly reducing turbulence, port noise and energy loss. The result is bass that you will feel as well as hear; bass that reaches out, grabs you by the lapels and shakes you up—for a completely visceral and emotional movie and music experience. See more about PowerPort at www.polkaudio.com/catalog/technology/.



CENTER LOUDSPEAKERS

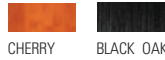
- 1" silk/polymer composite dome tweeter for smoother response and better detail. A neodymium magnet with low-viscosity ferro-fluid cooling and a heat sink on the back of the tweeter assembly, create better power handling and reliability.
- ARC (Acoustic Resonance Control) Port reduces midrange "boom" for clear, natural midrange.
- Magnetically shielded to allow safe placement next to CRT televisions or video monitors.
- Reversible design allows center channel to be "inverted" to fire up at listening position.
- Damped Asymmetric Hex Laminate Isolation (DAHLI) Cabinet design for clean, accurate sound.
- Finished in cherry or black oak real wood veneer.
- Anti-diffraction grilles minimize grille diffraction for spacious, 3 dimensional imaging.

CS/A6

- The ultimate in RTi Center channel performance.
- Dual PowerPorts reduce turbulence at the mouth of the port.
- Dual 6.5" polymer composite Dynamic Balance mid/woofer with rubber surround.
- Cascade tapered array crossover minimizes interference between the two mid/woofers in the upper midrange to provide a wider sweet spot and greater accuracy.
- Kickstand supports the rear part of the speaker on the rear "slope" of projection TVs.
- Dual 5-way binding posts allow bi-wiring and bi-amplification and also accept a variety of wiring connectors.
- Recommended amplifier power 20-200 Watts/channel.

OVERALL DIMENSIONS:
 7 3/4" H X 24" W X 14" D (19.68CM H X 60.96CM W X 35.56CM D)
 OVERALL FREQUENCY RESPONSE: 45HZ - 27KHZ

SEE SPECIFICATIONS FOR MORE DETAILED PRODUCT INFORMATION.

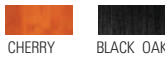


CS/A4

- Compact CSi center channel speaker.
- Dual 5 1/4" polymer composite Dynamic Balance mid/woofer with rubber surrounds.
- Compact size fits in virtually any application.
- 5-way binding posts accept a variety of wiring connectors and speaker cable up to 10 AWG.
- Recommended amplifier power 20-180 watts/channel.

OVERALL DIMENSIONS:
 6 7/8" H X 20" W X 8 3/4" D (17.46CM H X 50.80CM W X 22.23CM D)
 OVERALL FREQUENCY RESPONSE: 55Hz - 27kHz.

SEE SPECIFICATIONS FOR MORE DETAILED PRODUCT INFORMATION.



CS/A6

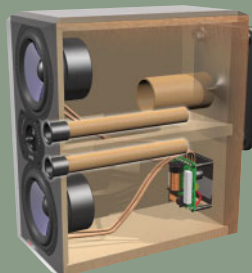


CS/A4



ARC PORT

A loudspeaker's internal standing wave resonance can impart a "thick" or "chesty" character to the sound of voices. Polk Audio's patented Acoustic Resonance Control Port System is tuned to cancel this resonance for utterly clear, accurate and natural midrange. See more about ARC Port at www.polkaudio.com/catalog/technology/.



polk
technology

SURROUND LOUDSPEAKERS

- Two 1" silk/polymer composite dome tweeters per speaker for smoother response and better detail.
- A neodymium magnet with low-viscosity ferro-fluid cooling and a heat sink on the back of the tweeter assembly, create better power handling and reliability.
- Mirrored, triangular cabinets that aim drivers and tweeters in opposing directions to produce a more enveloping sound field and wide, lifelike surround-sound effects.
- PowerPort with integral wall mount reduces turbulence at the mouth of the port, while allowing simple wall-mounting.
- 5-way binding posts accept a variety of wiring connectors and speaker cable up to 10 AWG.
- ARC (Acoustic Resonance Control) Port reduces midrange "boom" for clear, natural mids.
- Bipole/Dipole switch for the most flexible placement options and highest performance surround effects.
- Available in black or white laminate finishes and grilles.
- Two anti-diffraction grilles per speaker minimize grille diffraction for spacious, 3 dimensional imaging.

F/XiA6

- Flagship F/Xi series Bipole/Dipole surround speakers.
- 6 1/2" polymer composite Dynamic Balance mid/woofer with rubber surround.
- Recommended amplifier power 20-150 Watts/channel.

OVERALL DIMENSIONS:
14 3/4" H X 13 3/8" W X 8 5/8" D (37.47CM H X 33.97CM W X 21.91CM D)
OVERALL FREQUENCY RESPONSE: 45Hz - 27kHz.

SEE SPECIFICATIONS FOR MORE DETAILED PRODUCT INFORMATION.



BLACK MATTE WHITE

F/XiA4

- Compact Bipole/Dipole surround speakers.
- 5 1/4" Polymer Composite Dynamic Balance mid/woofer with rubber surround.
- Recommended amplifier power 20-150 Watts/channel.

OVERALL DIMENSIONS:
12" H X 11 3/8" W X 7 7/16" D (30.48CM H X 28.89CM W X 18.89CM D)
OVERALL FREQUENCY RESPONSE: 50Hz - 27kHz.

SEE SPECIFICATIONS FOR MORE DETAILED PRODUCT INFORMATION.



BLACK MATTE WHITE



F/XiA6



F/XiA4

polk
technology

CASCADE TAPERED ARRAY

Place two drivers near each other and interference between the two drivers creates frequency response errors (called "comb filtering") for off-axis listeners; you won't hear the same tonal balance as listeners who are "on-axis" in the center of the listening area. Polk Audio multi-driver speakers, combat this with "Cascade Tapered Array" crossovers. One driver is "crossed over" at a lower frequency than the other driver, filtering out the frequencies where the interference will occur. The Cascade Tapered Driver Arrays in select Polk multi-driver speakers produce clearer, more detailed sound and uniform tonal balance throughout the room. The sound is consistently accurate whether the listener is standing or sitting, in-line or off-axis. See more about Cascade Tapered Driver Array at www.polkaudio.com/catalog/technology/.

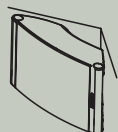


SEVEN WAYS TO ENJOY GREAT SOUND

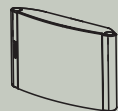
The OWM3 is a dedicated surround/satellite that's about as unobtrusive as an on-wall speaker can be. Equally capable of being part of a 2.1 2nd zone system, or as a multi-channel surround system, the OWM3's unique curved design and removable base make it easy to mount in a corner or simply place on a table. In fact, with the OWM3 you have seven different mounting possibilities, which makes it about the most versatile surround speaker anywhere.



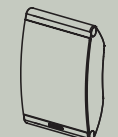
1. ANGLED WALL MOUNT



2. CORNER MOUNT



3. HORIZONTAL WALL MOUNT



4. VERTICAL WALL MOUNT



5. SHELF MOUNT



6. HORIZONTAL SHELF MOUNT



7. STANDARD ARTICULATING WALL MOUNT BRACKET (NOT INCLUDED)

OWM3

- Stunning curved design and removable base make it easy to mount on a wall, on a ceiling, in a corner, or simply place on a table.
- Capable of being part of a 2.1 second zone system, or as a 5.1, 6.1 or 7.1 channel surround system.
- 4 1/2" (114mm) Dynamic Balance composite cone driver is lightweight yet stiff, with good damping for high efficiency, excellent mid-bass and low distortion.
- 1" (25mm) dome tweeter delivers clear and detailed highs.
- Capacitive Coupling bass technology for low frequency response that's truly surprising given the speaker's ultra compact size.
- Super dense glass-filled ABS creates an acoustically inert cabinet, insuring an extremely clean and low coloration midrange response.
- 5-way gold-plated binding posts for the most secure hook-up options.

OVERALL DIMENSIONS:
 WITHOUT STAND:
 10" H X 7" W X 4" D
 (25.4 CM H X 17.8 CM W X 10.4 CM D)
 WITH STAND:
 10" H X 7" W X 4 11/16" D
 (25.4 CM H X 17.8 CM W X 11.9 CM D)
 PRODUCT WEIGHT: 4.4 LBS (2.0 KG)

SEE SPECIFICATIONS FOR MORE DETAILED PRODUCT INFORMATION.

	
WHITE PAINTABLE	BLACK PAINTABLE



OWM3

CAPACITIVE COUPLING

Capacitive Coupling Technology (CCT) works by creating a gentle impedance dip within the range where conventional sealed-box loudspeakers are subject to severely reduced bass output. Lower impedance within this critical frequency range means improved acoustic sensitivity by exploiting power amplifiers' ability to deliver more power to the bass frequencies. Thus, the OWM3 plays surprisingly loud over the lowest portion of its passband. The net result for the OWM3's performance is 3dB more bass output over a fairly broad range. It's as if the loudspeaker's enclosure grew by 30 to 50% in volume. And it's why you'll be astonished by just how loud and how low a satellite/surround loudspeaker this compact goes.

polk
technology

FLOORSTANDING LOUDSPEAKERS

	RTiA9	RTiA7	RTiA5
Driver Complement	3 - 7" (17.78cm) Polymer Composite woofers 2 - 5 1/4" (13.3cm) Dynamic Balance mid/range cone 1 - 1" (2.54cm) Silk Polymer Composite Dome	2 - 7" (17.78cm) Polymer Composite woofer 1 - 6 1/2" (16.5cm) Dynamic Balance 1 - 1" (2.54cm) Silk Polymer Composite Dome	2 - 6 1/2" (16.5cm) Polymer/Mica Composite Cone with Rubber Surround, 1 - 1" (2.54cm) Silk Polymer Composite Dome
Frequency Response: Overall / -3dB Limits	18Hz - 27kHz / 30Hz - 26kHz	20Hz - 27kHz / 35Hz - 26kHz	30Hz - 27kHz / 40Hz - 26kHz
Impedance	compatible with 8 Ohm outputs	compatible with 8 Ohm outputs	compatible with 8 Ohm outputs
Recommended Amplification	50 - 500 Watts/channel	20 - 300 Watts/channel	20 - 250 Watts/channel
Efficiency	90dB	89dB	90dB
Available Finish	black oak or cherry veneer	black oak or cherry veneer	black oak or cherry veneer
Cabinet Dimensions	48 5/8" H x 8 7/8" W x 21 3/8" D 123.51cm H x 22.54cm W x 54.29cm D	42 1/4" H x 8 7/8" W x 17 7/8" D 107.31cm H x 22.54cm W x 45.40cm D	40 1/4" H x 8 7/16" W x 15 3/4" D 102.23cm H x 21.43cm W x 40.01cm D
Features	PowerPort Plus	PowerPort Plus, ARC Port	PowerPort, ARC Port

BOOKSHELF LOUDSPEAKERS

	RTiA3	RTiA1
Driver Complement	1 - 6 1/2" (16.5cm) Polymer Composite Dynamic Balance Cone with Rubber Surround, 1 - 1" (2.5cm) Silk Polymer Composite Dome	1 - 5 1/4" (13.3cm) Polymer Composite Dynamic Balance Cone with Rubber Surround, 1 - 1" (2.5cm) Silk Polymer Composite Dome
Frequency Response: Overall / -3dB Limits	40Hz - 27kHz / 50Hz - 26kHz	50Hz - 27kHz / 60Hz - 26kHz
Impedance	compatible with 8 Ohm outputs	compatible with 8 Ohm outputs
Recommended Amplification	20 - 125 Watts/channel	20 - 125 Watts/channel
Efficiency	89dB	89dB
Available Finish	black or cherry veneer	black or cherry veneer
Dimensions	14 3/4" H x 8 7/16" W x 14" D 37.47cm H x 21.43cm W x 35.56cm D	12" H x 7 3/8" W x 11 1/2" D 30.48cm H x 18.73cm W x 29.2cm D
Features	PowerPort, ARC Port, built-in wall mount	PowerPort, ARC Port, built-in wall mount

**CENTER CHANNEL
LOUDSPEAKERS**

	CSiA6	CSiA4
Driver Complement	2 - 6 1/2" (16.5cm) Polymer Composite Dynamic Balance with rubber surround, 1 - 1" (2.5cm) Silk Polymer Surround Tweeter	2 - 5 1/4" (13.3cm) Polymer Composite Dynamic Balance with rubber surround, 1 - 1" (2.5cm) Silk Polymer Dome Tweeter
Frequency Response: Overall / -3dB Limits	45Hz - 27kHz / 55Hz - 26kHz	55Hz - 27kHz / 65Hz - 26kHz
Impedance	compatible with 8 Ohm outputs	compatible with 8 Ohm outputs
Recommended Amplification	20 - 200 Watts/channel	20 - 180 Watts/channel
Efficiency	90dB	89dB
Magnetically Shielded	yes	yes
Available Finish	black oak or cherry veneer	black oak or cherry veneer
Dimensions	7 3/4" H x 24" W x 14" D 19.68cm H x 60.96 cm W x 35.56 cm D	6 7/8" H x 20" W x 8 3/4" D 17.46cm H x 50.80cm W x 22.23cm D
Features	vented with dual PowerPort and single ARC Port	vented with dual PowerPort and single ARC Port

**SURROUND
LOUDSPEAKERS**

	F/XiA6	F/XiA4
Driver Complement	1 - 6 1/2" (16.5cm) Polymer Composite Dynamic Balance with rubber surround, 2 - 1" (2.5cm) Silk Polymer Dome Tweeter	1 - 5 1/4" (13.3cm) Polymer Composite Dynamic Balance with rubber surround, 2 - 1" (2.5cm) Silk Polymer Dome Tweeter
Frequency Response: Overall / -3dB Limits	45Hz - 27kHz / 55Hz - 26kHz	50Hz - 27kHz / 60Hz - 26kHz
Impedance	compatible with 8 Ohm outputs	compatible with 8 Ohm outputs
Recommended Amplification	20 - 150 Watts/channel	20 - 150 Watts/channel
Efficiency	88dB	88dB
Available Finish	black or white	black or white
Dimensions	14 3/4" H x 13 3/8" W x 8 5/8" D 37.47cm H x 33.97cm W x 21.91cm D	12" H x 11 3/8" W x 7 7/16" D 30.48cm H x 28.89cm W x 18.89cm D
Features	vented with single port	vented with single port

**SURROUND
LOUDSPEAKERS**

	OWM3
Driver Complement	1 - 4 1/2" (11.4cm) Dynamic Balance Driver; 1 - 1" (2.5cm) Silk Dome Tweeter
Frequency Response: Overall / -3dB Limits	80Hz - 25kHz / 100Hz - 24kHz
Impedance	4 Ohms
Recommended Amplification	20 - 100 Watts
Efficiency	89dB
Continuous Power	100 Watts
Dynamic Power	200 Watts
Available Finish	matte black (paintable) or matte white (paintable)
Product Weight / Shipping Weight	4.4 lbs with stand each / 10.28 lbs pair (2.0 kg with stand each / 4.66 kg pair)
Dimensions	10" H x 7" W x 4" D (25.4cm H x 17.8cm W x 10.4cm D without stand) 10" H x 7" W x 4 11/16" D (25.4cm H x 17.8cm W x 11.9cm D with stand)

* Magnetically shielded components for safe placement near TVs or video monitors.

We're fanatics when it comes to providing you useful, accurate information that can help you evaluate our products. But as we all know, we live in an imperfect world. At least some of us do. That's why performance specifications and product dimensions are subject to change without notice. For the most current specifications see our website, www.polkaudio.com/home.

Polk Audio is a Directed Electronics company which trades on NASDAQ under the symbol DEIX. Investor information can be found at <http://investor.directed.com>.

Polk Audio, Polk, PowerPort, Dynamic Balance, F/X, Atrium, Big Speaker Sound Without The Big Speaker, High Velocity Compression Drive, Acoustic Resonance Control, ARC Port, Casket Basket, I-Sonic, SurroundBar & SDA are registered trademarks of Britannia Investment Corporation used under license by Polk Audio, Incorporated. Polk Audio Designs & miDock are trademarks of Britannia Investment Corporation used under license by Polk Audio, Incorporated.

Polk Audio is an award-winning designer and manufacturer of high performance audio products and the largest audio brand of Directed Electronics, Inc. (NASDAQ, DEIX). Founded in 1972 by three Johns Hopkins University graduates, Polk Audio holds over 50 patents for advances in audio design and technology. Polk's products include loudspeakers and electronic components for home, auto and marine applications, the first satellite radio home component tuner, the world's first audiophile-grade active IP-addressable loudspeaker, the first THX® Ultra2 Certified in-ceiling loudspeaker and I-Sonic®—the first Entertainment System to include HD™ Radio, XM® Connect & Play capability and a DVD player. Polk products are available through authorized specialist consumer electronics retailers worldwide. For more information and the location of a Polk retailer or distributor in your area, visit www.polkaudio.com or call us at 1-800-377-7655 (USA and Canada). Outside of North America call +1 (410) 358-3600.

POLK AUDIO5601 METRO DRIVE
BALTIMORE, MD 21215WWW.POLKAUDIO.COMCUSTOMER SERVICE:
800-377-7655 (USA & CANADA)
410-358-3600 (WORLDWIDE)COPYRIGHT© APRIL 2008
ALL RIGHTS RESERVED.