



PCI Expansion System User's Manual



1 Slot Series

9918 Via Pasar
San Diego, CA 92126
Phone (858) 530-2511
Fax (858) 530-2733
www.magma.com
sales@magma.com
support@magma.com

Copyright © 2002 MAGMA

This publication is protected by Federal Copyright Law, with all rights reserved. No part of this publication may be copied, photocopied, reproduced, stored in a retrieval system, translated, transmitted or transcribed, in any form or by any means manual, electric, electronic, electro-magnetic, mechanical, optical or otherwise, in whole or in part without prior written consent from MAGMA.

Limitation of Liability

Information presented by MAGMA in this manual is believed to be accurate and reliable. However, MAGMA assumes no responsibility for its use. No license is granted by implication or otherwise to any rights of MAGMA.

Product specifications and prices are subject to change without notice.

Trademark References

Trademarks and registered trademarks are proprietary to their respective manufacturers.

Table of Contents

PREFACE	III
Advisories	iii
Safety Instructions	iv
When Working Inside a Computer	iv
Protecting Against Electrostatic Discharge	v
Regulatory Compliance Statements	vii
FCC Class A Notice	vii
CE Certification	vii
Declaration of Conformity	viii
Quality & Service	ix
Product Warranty	ix
30 Day Money Back Guarantee	ix
Free Technical Assistance	ix
Warranty & Repair in Seven Days	ix
Returns for Repair/Replacement/Credit	ix
Out of Warranty Repair	x
Advanced Replacement Service	x
CHAPTER 1 INTRODUCTION	1
The 1 Slot CardBus PCI Expansion System	1
Pre-Installation Information	1
Parts List	2
Tools Required for Installation	2
CHAPTER 2 QUICK START GUIDE	3
Supported Operating Systems	3
Step One: Remove PCI Expansion System Cover	4
Step Two: Install PCI Card in PCI Expansion System	4
Step Three: Attach PCI Expansion Cable	5
Step Four: Install CardBus Host Interface Card	5
Step Five: Recheck Installation	6
Step Six: Power Sequence	6
Powering Up:	6
Powering Down:	7
Step Seven: Install Software Drivers	7

MAGMA

Mac OS 9.x	Error! Bookmark not defined.
Windows 98SE & Windows ME	7
Windows NT, Windows 2000 & Windows XP	7
Step Eight: System Should Be Up and Running	8
Step Nine: Finishing Touches	8
CHAPTER 3 BUS HIERARCHY	10
Bus Hierarchy	10
CHAPTER 4 HOW TO GET MORE HELP	11
Contacting Technical Support	11
Frequently Asked Questions	11
Returning Merchandise to MAGMA	11
APPENDIX A MAC OS VERIFICATION	13
MagmaSlots	13
APPENDIX B WINDOWS DRIVER INSTALLATION	15
Windows 98SE and Windows ME Instructions	15
Verify Installation	17
Windows NT Instructions	18
Special Instructions for Windows NT Service Pack 6	19
Verify Installation	22
Windows 2000 Instructions	23
Verify Installation	25
Windows XP Instructions	26
Verify Installation	29
How to Uninstall the MAGMA CardBus Driver	30
Windows 98SE, Windows ME, Windows NT	30
Windows 2000 and Windows XP	31
PCIScope	32
APPENDIX C DC POWER INFORMATION	34
DC Power Options	34
Battery Sizing/Selection:	34
For Batteries Rated in Amp Hours:	34
For Batteries Rated in Watt Hours:	35

Preface

Advisories

Three types of advisories are used throughout this manual to provide helpful information or to alert you to the potential for hardware damage or personal injury. They are Notes, Cautions, and Warnings. The following is an example of each type of advisory. Use caution when servicing any electrical component.

**NOTE**

An amplifying or explanatory comment related to procedural steps or text.

**CAUTION**

Used to indicate and prevent the following procedure or step from causing damage to the equipment.

**WARNING**

Used to indicate and prevent the following step from causing injury.

Disclaimer: We have tried to identify all situations that may pose a warning or caution condition in this manual. However, MAGMA does not claim to have covered all situations that might require the use of a Caution or Warning.

Safety Instructions

Before handling the MAGMA PCI Expansion System, read the following instructions and safety guidelines to prevent damage to the product and to ensure your own personal safety. Refer to the “Advisories” section for advisory conventions used in this manual, including the distinction between Warnings, Cautions, and Notes.

- ◆ Always use caution when handling/operating the computer. Only qualified, experienced, authorized electronics personnel should access the interior of the computer. The power supplies produce high voltages and energy hazards, which can cause bodily harm.
- ◆ Use extreme caution when installing or removing components. Refer to the installation instructions in this manual for precautions and procedures. If you have any questions, please contact MAGMA Technical Support.



WARNING

High voltages are present inside the chassis when the unit's power cord is plugged into an electrical outlet. Disconnect the power cord from its source before removing the chassis cover.

Never modify or remove the radio frequency interference shielding from your workstation or expansion unit. To do so may cause your installation to produce emissions that could interfere with other electronic equipment in the area of your system.

When Working Inside a Computer

Before taking covers off a computer, perform the following steps:

1. Turn off the computer and any peripherals
2. Disconnect the computer and peripherals from their power sources to prevent electric shock or system board damage.
3. Follow the guidelines provided in “Regulatory Compliance Statements” on the following page.
4. Disconnect any telephone or telecommunications lines from the computer.

In addition, take note of these safety guidelines when appropriate:

- ◆ To help avoid possible damage to systems boards, wait five seconds after turning off the computer before removing a component, removing a system board, or disconnecting a peripheral device from the computer.
- ◆ When you disconnect a cable, pull on its connector or on its strain-relief loop, not on the cable itself. Some cables have a connector with locking tabs. If you are disconnecting this type of cable, press in on the locking tabs before disconnecting the cable. As you pull connectors apart, keep them evenly aligned to avoid bending any connector pins. Also, before connecting a cable, make sure both connectors are correctly oriented and aligned.

**CAUTION**

Do not attempt to service the system yourself except as explained in this manual. Follow installation instructions closely.

Protecting Against Electrostatic Discharge

**Electrostatic Discharge (ESD) Warning**

Electrostatic Discharge (ESD) is the enemy of semiconductor devices. You should always take precautions to eliminate any electrostatic charge from your body and clothing before touching any semiconductor device or card by using an electrostatic wrist strap and/or rubber mat.

Static electricity can harm system boards. Perform service at an ESD workstation and follow proper ESD procedure to reduce the risk of damage to components. MAGMA strongly encourages you to follow proper ESD procedure, which can include wrist straps and smocks, when servicing equipment.

You can also take the following steps to prevent damage from electrostatic discharge (ESD):

- ◆ When unpacking a static-sensitive component from its shipping carton, do not remove the component's anti-static packaging material until you are ready to install the component in a computer. Just before unwrapping the anti-static packaging, be sure you are at an ESD workstation or grounded.

MAGMA

- ◆ When transporting a sensitive component, first place it in an anti-static container or packaging.
- ◆ Handle all sensitive components at an ESD workstation. If possible, use anti-static floor pads and workbench pads.
- ◆ Handle components and boards with care. Don't touch the components or contacts on a board. Hold a board by its edges or by its metal mounting bracket.

Regulatory Compliance Statements

This section provides the FCC compliance statement for Class A devices and describes how to keep the system CE compliant.

The Following Information is Required by the FCC

FCC Class A Notice

If your system is FCC Class A, the following applies:

Note - This equipment has been tested and found to comply with the limits for a Class A digital device, pursuant to Part 15 of the FCC Rules. These limits are designed to provide reasonable protection against harmful interference when the equipment is operated in a commercial environment. This equipment generates, uses and can radiate radio frequency energy and, if not installed and used in accordance with the instruction manual, may cause harmful interference in which case the user will be required to correct the interference at his own expense.

This device complies with Part 15 of the FCC Rules. Operation is subject to the following two conditions: (1) this device may not cause harmful interference, and (2) this device must accept any interference received including interference that may cause undesired operation.

Changes or modifications not expressly approved by the party responsible for compliance could void the user's authority to operate the equipment.



NOTE

The assembler of a personal computer system may be required to test the system and/or make necessary modifications if a system is found to cause harmful interferences or to be noncompliant with the appropriate standards for its intended use.

CE Certification



The product(s) described in this manual complies with all applicable European Union (CE) directives. For computer systems to remain CE complaint, only CE-complaint parts may be used. Maintaining CE compliance also requires proper cable and cabling techniques. MAGMA will not retest or recertify systems or components that have been reconfigured by customers.

MAGMA

Declaration of Conformity

Manufacturer's Name: MAGMA
A Mobility Electronics, Inc., Company
Manufacturer's Address: 9918 Via Pasar
San Diego, CA 92126
USA

Declares that the product:

Type of Equipment: Computer Peripheral Equipment
Product Name: MAGMA PCI Expansion System
Model Number: **CB1F, CB1FC1.5, CB1FNL, CB1FNLC1.5, CB1H,
CB1HC1.5, CB1HNL, CB1HNLC1.5**

to which this declaration relates, meet the essential health and safety requirements and is in conformity with the relevant EU Directives listed below:

EU EMC Directive 89/336/EEC

EU Low Voltage Directive 73/23/EEC

EN 55022:1998/A1:2000; CISPR 22:1997/A1:2000 Class A, Limits and Methods of Measurement of Radio Disturbance Characteristics of Information Technology Equipment

EN 61000-3-2:1995 Power Frequency Emission for AC Main Harmonics

(Not Applicable for units under 75 Watts)

EN 61000-3-3:1995 Voltage Fluctuations

(Not Applicable for units under 75 Watts)

EN 50024:1998 Immunity, ITE Requirements

-EN 61000-4-2 Electrostatic Discharge (ESD) Immunity

(Supersedes IEC 801-2)

-EN 61000-4-3 (Formerly ENV 50140) Radiated RF Field Immunity

(Supersedes IEC 801-3 & IEC 1000-4-3)

-EN 61000-4-4 EFT Immunity for AC and I/O Lines

(Supersedes IEC 801-4)

-EN 61000-4-5 Surge (Line-Ground & Line-Line) Immunity

-EN 61000-4-6 (Formerly ENV 50141) Conducted Radio Field

(Common Mode) Immunity

-EN 61000-4-8 Power Frequency Magnetic Field Immunity

-EN 61000-4-11 Voltage Dip/Surge Immunity

EN 60950:2000 Safety of Information Technology Equipment (ITE) for CE certification

The technical documentation required to demonstrate the above products meet the requirements of the EMC Directive and Low Voltage Directive has been compiled by MAGMA and is available for inspection by the relevant enforcement authorities.

signed

Nancy Rubinstein
General Manager
San Diego, CA
March 15, 2002

A signed original copy of this document is available from MAGMA.

Quality & Service

Product Warranty

MAGMA PCI Expansion Systems carry a one-year warranty against defects in materials or workmanship from the date of shipment to the original purchaser. Any products found to be defective in material or workmanship will be repaired or replaced promptly.

Please Note: Products that have been modified will not be covered under this warranty.

30 Day Money Back Guarantee

Any single standard MAGMA manufactured product may be returned within 30 days of purchase for a full refund of the price paid for the product being returned (must be in new condition in the original packaging). If you are not satisfied, or chose the wrong product by mistake, you do not have to keep it. Please call our Sales Group for a **Return Merchandise Authorization** number *before* returning the product.

Free Technical Assistance

MAGMA is dedicated to providing competent, responsive technical support both before and after the sale. We have staffed our support department with professional software and hardware engineers and given them the finest tools. MAGMA provides unlimited support to all customers for the life of all products purchased.

Warranty & Repair in Seven Days

Any MAGMA manufactured product returned for repair under warranty will be repaired and shipped within one week unless it is necessary for a Technical Support Engineer to contact you and discuss the repair. Repaired products are returned by the same shipping method as they are received. Please call for a **Return Merchandise Authorization** number *before* returning the product.

Please Note: All returns to MAGMA for Repair/Replacement/Credit must be shipped back to MAGMA with all Shipping Charges and Duties Paid. Shipments that arrive with freight or duties due, or returned collect, will be refused and sent back to the sender at their own expense.

Returns for Repair/Replacement/Credit

It is not required, though highly recommended, that you keep the packaging from the original shipment of your MAGMA Product. However, if you return a product to MAGMA for warranty repair/replacement or take advantage of the 30 day money back guarantee, you will need to package the product in a manner similar to

MAGMA

the manner in which it was received from our plant. MAGMA cannot be responsible for any physical damage to the product or component pieces of the product (such as the host or expansion interfaces for PCI expansion systems) that are damaged due to inadequate packing. Physical damage sustained in such a situation will be repaired at the owner's expense in accordance with **Out of Warranty Procedures**. Please, protect your investment, a bit more padding in a good box will go a long way to insuring the device is returned to us in the same condition you shipped it in. Please call for a **Return Merchandise Authorization** number *before* returning the product.

Out of Warranty Repair

Any out of warranty MAGMA manufactured product can be repaired at the cost of MAGMA parts, plus current labor rate (not to exceed 50% off the current list price for the same or equivalent product) plus freight. Please call for a **Return Merchandise Authorization** number *before* returning the product. There will be a minimum charge for 1 hour's labor for evaluation of the product/unit. If repairs are needed, this will be applied to the repair of the product. Once evaluation has been completed, a Customer Support Representative will contact you with any options you may have and to authorize the repair work before the repair is performed.

Advanced Replacement Service

This Fee Based Service is primarily geared towards correcting severe problems encountered in a system within the first 90 days after shipment from the factory, but it is also available, on a graduated fee scale during the term of the Warranty Period. Under the terms of this Service, MAGMA will replace a warranted MAGMA manufactured product prior to receiving the defective product from the customer. Advanced replacements are available upon credit approval or by providing a VISA, MasterCard or American Express card number as security for the returned product. The cost for this service is the appropriate, **non-refundable**, graduated fee for Advanced Replacement, as detailed in the chart below, plus freight.

P R O D U C T	T I M E O W N E D		
	0-90 days	91 days - 6 mos.	6 mos. – 1 yr
PCI Expansion System	\$150.00	\$300.00	\$450.00
PCI Expansion Boards	\$50.00	\$100.00	\$150.00
300/400W Power Supply	\$50.00	\$100.00	\$150.00
Other Power Supply	\$25.00	\$50.00	\$75.00
Any Product under \$50.00	\$25.00	\$25.00	\$25.00

Please Note: This fee schedule subject to change. For current information consult your Technical Support Engineer at the time of the request.

The item must be returned to MAGMA with all parts and components that were shipped with it, in undamaged condition. The Customer shall be responsible for missing components and/or systems or components that are returned and are found to be physically damaged.

Non-Returned Advanced Replacements: Advanced Replacements that are not returned within *30 days* of replacement shipment will automatically be charged to the securing credit card. If the product is returned after the credit card is charged, the entity (person or company) will be responsible for a Restocking Fee. This fee will be 25% of the listed price of the replaced unit, with a minimum Restocking Fee of \$25.00. Product will only be accepted for return and restocking if the Advanced Replacement is less than 90 days from date of replacement unit shipment.

This page intentionally left blank.

Chapter 1 Introduction

The 1 Slot CardBus PCI Expansion System

MAGMA's 1 Slot CardBus PCI Expansion System is a general-purpose bus expansion system for the Peripheral Component Interconnect (PCI) local bus. The expansion bus is fully compliant with the PCI Local Bus Specification. The PCI Expansion System consists of a CardBus Card, an expansion bus cable (a shielded, high-speed cable), and a chassis with a power supply.

Enclosure:	Portable
Dimensions:	5.45"W x 1.70"H x 8.02"D (CB1H) 5.45"W x 1.70"H x 13.43"D (CB1F)
Weight:	2.5 lbs.
Construction:	Aluminum/Steel
Cooling:	Optimal Cooling with a 4 CFM fan
Motherboard:	1 PCI Slot (supports full or short-length PCI cards)
AC-DC Power Brick	45 Watt External 115-230VAC AC Power Supply (included) Providing 12 volt DC input power Power to PCI Slot: 4.0A @ +3.3V 3.0A @ +5V 0.6A @ +12V 0.6A @ -12V
PCI Bus:	32 bits/33 MHz
Environment:	0° to 50° C Operating Temperature -20° to 60° C Storage Temperature 5% to 85% Relative Humidity, Non-condensing
Certifications:	FCC Class A Approved CE Compliance
Warranty:	1 Year Return to Factory
Options:	1 ½ meter cable 6-foot battery cable with male XLR 4-pin connector

Pre-Installation Information

Before using the MAGMA PCI Expansion System you should perform the following steps:

- Inventory the shipping carton contents for all of the required parts
- Gather all of the necessary tools required for installation
- Read this manual

Follow these suggested guidelines and cautions while setting up your PCI Expansion System:

- Only use the interface cable provided by MAGMA
- Use keyed connectors (to prevent attaching a cable backwards)
- Be careful when routing signal cables to your devices
- Avoid sharp bends or folds in the signal cable

MAGMA

- Provide enough slack to allow easy device placement
- Beware of sources of scuffing and abrasion damage to the cables
- Secure the devices in their shelves using the appropriate hardware
- Use the screws or brackets supplied with the device (suitable mounting brackets, adapters, and hardware are available from your local computer dealer or retailer).

Parts List

The following parts are provided:

Qty	Item
1	Enclosure containing 1 Slot PCI expansion motherboard
1	PCI expansion cable (1-meter or 1.5-meter)
1	CardBus host interface card
1	AC-DC Power Brick (45 Watt Auto-switching)
1	Power Supply Cable
1	User's Manual
1	CardBus PCI Drivers & Utilities CD (CardBus CD)



NOTE

The MAGMA PCI Expansion System is shipped with some parts packaged in a separate box within the larger box that the chassis is shipped in.

Tools Required for Installation

In order to complete the installation of the CardBus PCI expansion system you will need the following tools:

- A suitable Electrostatic Discharge Protective environment
- One Phillips-head screwdriver

Chapter 2 Quick Start Guide

The following steps will guide you through the installation of your new 1 Slot CardBus PCI Expansion System.

Supported Operating Systems

It is HIGHLY recommended that Microsoft Windows users meticulously follow the MAGMA Software Driver Installation instructions detailed in Appendix B of this manual. If you do not follow the driver installation instructions, you have greatly increased your chances of failure when configuring your system. Please take some time to read Appendix B before continuing with your installation.

Operating Systems	Special Instructions
Mac OS 9.x	There are no MAGMA drivers required for Mac OS 9.x. The Mac OS operating system should recognize the MAGMA expansion chassis on first boot with the chassis powered up and connected to the computer. See Appendix A for Mac OS Verification.
Mac OS X	Requires MacOS X Version 10.2.2
Windows 98SE Windows ME	Although a MAGMA CardBus Driver is not required, MAGMA recommends that you install the MAGMA Software Utility before connecting the expansion chassis to your computer. See Appendix B, page 15 for complete driver/utility installation instructions.
Windows NT 4.0	A MAGMA CardBus Driver is required for Windows NT. See Appendix B, page 18 for complete driver/utility installation instructions.
Windows 2000	A MAGMA CardBus Driver is required for Windows 2000. See Appendix B, page 23 for complete driver/utility installation instructions.
Windows XP	A MAGMA CardBus Driver is required for Windows XP. See Appendix B, page 26 for complete driver/utility installation instructions.

Step One: Remove PCI Expansion System Cover



WARNING

High voltages are present inside the chassis when the unit's power cord is plugged into an electrical outlet. Disconnect the power cord from its source before removing the chassis cover.



CAUTION

Before touching anything inside the chassis, move to an ESD station and follow proper ESD procedure. Failure to do so may result in electrostatic discharge damaging the computer or its components. For more information, see "Protecting Against Electrostatic Discharge".

Four screws retain the cover on the 1 Slot chassis. They are located on the rear of the unit. Remove these screws to open the chassis. Slide the cover backwards disengaging it from the guides at the front of the chassis by firmly grasping the rear cover lip over the card area and prying the cover backward about $\frac{3}{4}$ " and then lifting the cover off the chassis.

Step Two: Install PCI Card in PCI Expansion System



WARNING

High voltages are present inside the chassis when the unit's power cord is plugged into an electrical outlet. Disconnect the power cord from its source before removing the chassis cover.



Electrostatic Discharge (ESD) Warning

All PCI cards are susceptible to electrostatic discharge. When moving PCI cards, it is best to carry the cards in anti-static packaging. If you need to set a PCI card down, be sure to place it inside or on top of an anti-static surface. For more information, see "Protecting Against Electrostatic Discharge".

Install PCI cards following PCI card manufacturer's recommendations. Be sure to secure cards using bracket screws. Also check to make sure PCI card inserted is not touching any components or metal chassis.

**NOTE**

Make sure that all PCI cards are fully seated in their connectors. When correctly seated in its connector, you will notice a firm resistance when you pull up gently on the card. To keep the cards in place, secure them in the chassis with their retaining screws (supplied with the PCI Expansion System).

The sheer number of PCI cards and device drivers available makes it impossible for MAGMA to fully test and certify all available PCI cards for use in the PCI expansion system. Our best advice to you in this regard is to insist on full PCI Specification compliance from your card and system vendors. Cards and systems should be at least PCI Specification Revision 2.0 compliant with 2.1 compliance recommended. Compliance in your system motherboard, PCI cards and console firmware (or BIOS) is your best assurance that everything will install and operate smoothly.

Step Three: Attach PCI Expansion Cable

Carefully position the PCI Expansion System so that the supplied expansion cable will conveniently reach from the connector of the CardBus Card to the connector of the 1 Slot chassis.

Attach one end of the PCI Expansion Cable to the CardBus Card and secure it using the captive thumbscrews on the cable. Carefully route the cable to the 1 Slot chassis and secure it with the captive thumbscrews. It is important that the cable be attached securely to the card connectors at both ends.

Step Four: Install CardBus Host Interface Card

**NOTE**

CardBus PC Cards can only be used in systems that support CardBus. A special keying mechanism prevents insertion in systems that do not support 32-bit CardBus PC cards.

1. Begin installation of your CardBus Host Interface Card by first powering down your laptop computer. Use the procedures for shutting down your operating system and shutting off power to your system provided in your owner's manual or system documentation.

MAGMA

2. Insert the CardBus Host Interface Card with the MAGMA logo side up, (gold strip up) into the PC Card slot. Gently push the card until it is seated firmly.



NOTE

If your computer has two CardBus (or PC Cards) slots, MAGMA recommends that you install the MAGMA CardBus card into Socket 2.

3. For more information on using CardBus PC Cards, please refer to your computer's user manual or system documentation.

Step Five: Recheck Installation

Check your installation before powering up the 1 Slot CardBus PCI Expansion System for the first time. Although the power supply has an over voltage protection device built into it, it may not "trip" in time to fully protect a device that has been improperly connected or whose power cable has been damaged.

Step Six: Power Sequence



NOTE

If at all possible, plug the power cords from the PCI Expansion System and your host computer into a shared power strip, preferably one that has surge and noise suppression circuitry built into it.



NOTE

The 45 Watt power brick is auto-switching, which means the power brick will automatically adjust to the voltage required for the region you are in.

Powering Up:

You must apply power to the PCI Expansion System first and then power up your host computer. This will allow the higher numbered PCI buses in your hierarchy to be at a stable state at the time that the host system issues its master power-on bus reset. In systems that perform automatic PCI bus configuration, this will allow the configuration code to recognize the PCI bus hierarchy and the attached devices.

Powering Down:

It is recommended that you first shut down the host computer correctly and then power down the chassis to avoid 'computer lock-up'.

Step Seven: Install Software Drivers



WARNING

You WILL be prompted to Shut Down and Reboot your system several times during software installation. Please be patient, each Shut Down and Reboot does serve a purpose and is required for correct installation. If you Shut Down and Reboot when requested, it may save you from having to make a call to MAGMA Technical Support.

Mac OS 9.x or Mac OS X

If you are running Mac OS, you may skip this step and continue to Step Eight. There are no MAGMA drivers required for Mac OS 9.x or Mac OS X. The Mac OS operating system should recognize the MAGMA expansion chassis on first boot with the chassis powered up and connected to the PowerBook. See Appendix A for Mac OS 9 Verification Instructions.

Windows 98SE & Windows ME

Although a MAGMA CardBus Driver is not required, MAGMA recommends that you install the MAGMA Software Utility before connecting the expansion chassis to your computer. See Appendix B, page 15 for complete MAGMA Software installation instructions.

If you did not realize that you should have loaded the MAGMA CardBus Driver already, it's okay. Since a MAGMA CardBus Driver is not required, you may be prompted to locate and load drivers for PCI cards that you have installed in the chassis at this time. **If you are prompted to reboot, please do so to ensure correct installation.** After installation of other drivers is complete, you should load the MAGMA CardBus Driver following the Windows 98SE/ME Instructions detailed in Appendix B of this manual.

Windows NT, Windows 2000 & Windows XP

A MAGMA CardBus Driver is required for Windows NT, Windows 2000 and Windows XP. See Appendix B for complete driver installation instructions before continuing to Step Eight.

**NOTE**

It is HIGHLY recommended that Microsoft Windows users meticulously follow the MAGMA Software Driver Installation instructions detailed in Appendix B of this manual. If you do not follow the driver installation instructions, you have greatly increased your chances of failure when configuring your system.

Step Eight: System Should Be Up and Running

**WARNING**

High voltages are present inside the chassis when the unit's power cord is plugged into an electrical outlet. Disconnect the power cord from its source.

**CAUTION**

Before touching anything inside the chassis, move to an ESD station and follow proper ESD procedure. Failure to do so may result in electrostatic discharge damaging the computer or its components. For more information, see "Protecting Against Electrostatic Discharge".

If there is a problem, be sure to turn off the power before making any changes. If you are having trouble with the system, turn off the host computer and the chassis, then check that all cards are seated properly and all cables are connected.

If you are still having problems, contact MAGMA Technical Support for more help.

Step Nine: Finishing Touches

**WARNING**

High voltages are present inside the chassis when the unit's power cord is plugged into an electrical outlet. Disconnect the power cord from its source before replacing the chassis cover.

**CAUTION**

Before touching anything inside the chassis, move to an ESD station and follow proper ESD procedure. Failure to do so may result in electrostatic discharge damaging the computer or its components. For more information, see "Protecting Against Electrostatic Discharge".

When replacing the expansion chassis cover, be sure that the side edge guides engage the inner rails of the expansion chassis. Use the 4 screws provided to secure the cover.

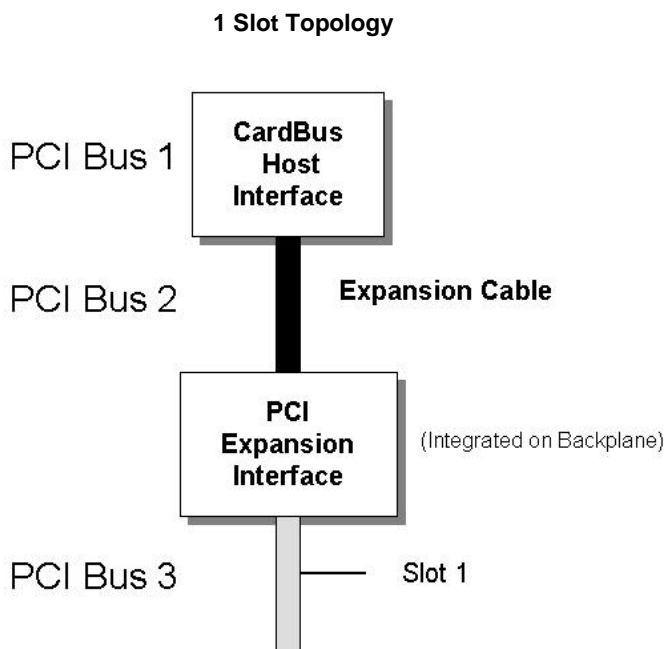
Chapter 3 Bus Hierarchy

Bus Hierarchy

The following figure is representative of the PCI Bus hierarchies for the 1 Slot CardBus PCI Expansion System. This figure pictorially conveys the overall PCI bus topology of the system.

The key point in the following figure of the 1 Slot Topology is that the connecting cable between the CardBus Host Interface Card and the 1 Slot chassis is actually a PCI bus itself.

In general, we do not know what the actual Bus numbers are. We only know how they increment starting from the MAGMA CardBus Host Interface Card.

**NOTE**

All PCI cards installed in the 1 Slot chassis will appear on PCI Bus 3.

Chapter 4 How to Get More Help

Contacting Technical Support

For a quick response, send an email to support@magma.com with a detailed description of your problem, or visit our web site at:

www.magma.com/support/support.htm

Our support department can also be reached by fax at (858) 530-2733 or by phone at (858) 530-2511. Support is available Monday through Friday, 8:00 AM to 5:00 PM PT. When contacting MAGMA Technical Support, please be sure to include the following information:

- | | |
|------------------|----------------------------------|
| 1) Name | 6) MAGMA Product Name |
| 2) Company Name | 7) MAGMA Serial Number |
| 3) Phone Number | 8) Computer Make |
| 4) Fax Number | 9) Computer Model |
| 5) Email Address | 10) Operating System and Version |
| | 11) Description of the Problem |

Frequently Asked Questions

You can visit the MAGMA Technical Support FAQ pages on the Internet at:

www.magma.com/support/support.htm

Returning Merchandise to MAGMA

If factory service is required, a Service Representative will give you a Return Merchandise Authorization (RMA) number. Put this number and your return address on the shipping label when you return the item(s) for service. **MAGMA will return any product that is not accompanied by an RMA number.** Please note that MAGMA WILL NOT accept COD packages, so be sure to return the product freight and duties-paid.

Ship the well-packaged product to the address below:

MAGMA
RMA # _____
9918 Via Pasar
San Diego, CA 92126
USA

It is not required, though highly recommended, that you keep the packaging from the original shipment of your MAGMA product.

MAGMA

However, if you return a product to MAGMA for warranty repair/replacement or take advantage of the 30-day money back guarantee, you will need to package the product in a manner similar to the manner in which it was received from our plant. MAGMA cannot be responsible for any physical damage to the product or component pieces of the product (such as the host or expansion interfaces for PCI expansion systems) that are damaged due to inadequate packing. Physical damage sustained in such a situation will be repaired at the owner's expense in accordance with Out of Warranty Procedures. Please, protect your investment, a bit more padding in a good box will go a long way to insuring the device is returned to use in the same condition you shipped it in. Please call for an RMA number first.

APPENDIX A Mac OS 9 Verification

MagmaSlots

MagmaSlots is a simple utility application for displaying information on PCI cards installed in the Macintosh computer. It uses the Mac OS NameRegistry to discover what slots have PCI cards in them, and then displays basic information for each card in a simple console window.

MagmaSlots is included on the MAGMA CardBus CD or you can download this utility from our web site at:
www.magma.com/support/support.htm.



NOTE

The MagmaSlots utility is currently available for Mac OS 9.x only.

Connect the expansion chassis to your computer by following the Step-by-Step Instructions included in [Chapter Two: Quick Start Guide](#). With the MAGMA expansion chassis powered up and connected to your computer, launch the **MagmaSlots** application by double-clicking its icon. It is recommended that you launch **MagmaSlots** from a location on your desktop.

A console window similar to the one shown below should appear:

```

Magma Slot Peek
=====
PCI Slot Name : $ATI (Devices:device-tree:pci:RTV,StoneParent)
Card Name : RTV,StoneParent
Device Type : RTV,DDParent
Board Model : RTV,Rage16
Board Version : 0
Board Vendor ID : 1002
Slot Number: 16 on PCI Bus Number: 0

PCI Slot Name : $ATI (Devices:device-tree:pci:RTV,StoneParent:RTV,Stone_A)
Card Name : RTV,Stone_A
Device Type : display
Board Version : 0
Board Vendor ID : 1002

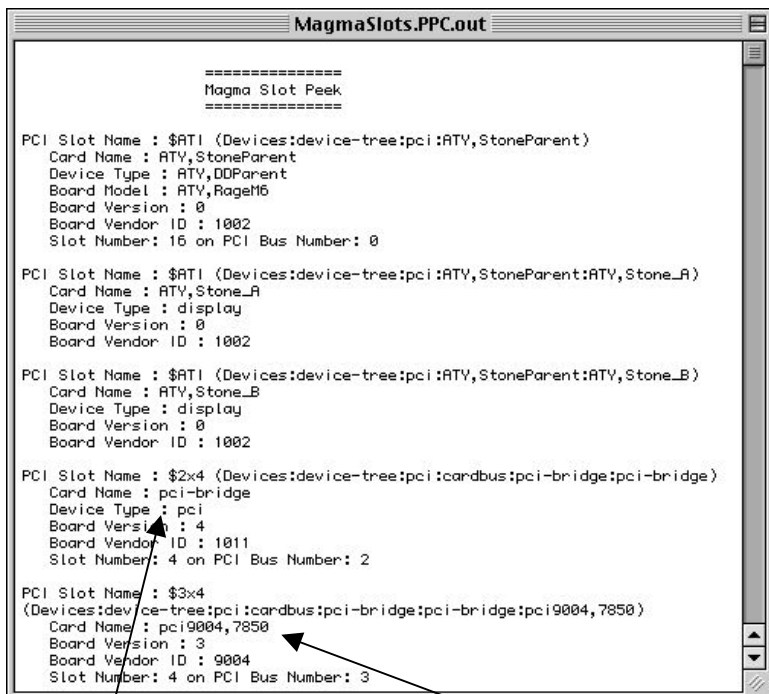
PCI Slot Name : $ATI (Devices:device-tree:pci:RTV,StoneParent:RTV,Stone_B)
Card Name : RTV,Stone_B
Device Type : display
Board Version : 0
Board Vendor ID : 1002

PCI Slot Name : $2x4 (Devices:device-tree:pci:andbus:pci-bridge:pci-bridge)
Card Name : pci-bridge
Device Type : pci
Board Version : 4
Board Vendor ID : 1011
Slot Number: 4 on PCI Bus Number: 2
  
```

If you see this entry, it means that your computer has recognized the MAGMA expansion chassis.

MAGMA

You should also see a separate entry for each PCI card installed in the PCI Expansion System. For example, if you have an Adaptec 2906 SCSI card installed in the chassis, you should see a console window similar to the one shown below:



```
=====
Magma Slot Peek
=====

PCI Slot Name : $ATI (Devices:device-tree:pci:ATY,StoneParent)
Card Name : ATY,StoneParent
Device Type : ATY,DDParent
Board Model : ATY,Rage16
Board Version : 0
Board Vendor ID : 1002
Slot Number: 16 on PCI Bus Number: 0

PCI Slot Name : $ATI (Devices:device-tree:pci:ATY,StoneParent:ATY,Stone_A)
Card Name : ATY,Stone_A
Device Type : display
Board Version : 0
Board Vendor ID : 1002

PCI Slot Name : $ATI (Devices:device-tree:pci:ATY,StoneParent:ATY,Stone_B)
Card Name : ATY,Stone_B
Device Type : display
Board Version : 0
Board Vendor ID : 1002

PCI Slot Name : $2x4 (Devices:device-tree:pci:cardbus:pci-bridge:pci-bridge)
Card Name : pci-bridge
Device Type : pci
Board Version : 4
Board Vendor ID : 1011
Slot Number: 4 on PCI Bus Number: 2

PCI Slot Name : $3x4
(Devices:device-tree:pci:cardbus:pci-bridge:pci-bridge:pci9004,7850)
Card Name : pci9004,7850
Board Version : 3
Board Vendor ID : 9004
Slot Number: 4 on PCI Bus Number: 3
```

MAGMA expansion chassis

Adaptec 2906 SCSI Controller



NOTE

Some PCI cards will produce multiple entries in the MagmaSlots console window.

If **MagmaSlots** does not display some or all of the PCI cards installed in the expansion chassis, you should do the following before contacting MAGMA Technical Support:

1. Make sure that you apply power to the expansion chassis first, then power up the computer.
2. Make sure the MAGMA CardBus Interface is inserted with the Gold Strip facing up.
3. Make sure all cables are securely connected.

APPENDIX B Windows Driver Installation

The following sections will guide you through MAGMA CardBus Driver/Utility installation for each supported Windows operating system.

Windows 98SE and Windows ME Instructions

**NOTE**

Under Windows 98SE and Windows ME, it is recommended that you install the MAGMA CardBus Software Utility **BEFORE** connecting the MAGMA expansion chassis to your computer.

**NOTE**

Prior to installing the MAGMA CardBus Software Utility, you should be familiar with the installation procedures for the PCI cards that you are installing in the expansion chassis. Some PCI card manufacturers recommend that you install their software driver(s) prior to installing the hardware. If this is the case, you should install their driver before you connect and power up the expansion chassis. You may be required to reboot after installing third-party PCI device drivers.

There are no MAGMA CardBus Drivers required for Windows 98SE and Windows ME. The Windows operating system will recognize and find the MAGMA CardBus-to-PCI Expansion System the first time you power up with the expansion chassis connected to your computer. You will be required to reboot.

However, MAGMA has developed a Software Utility that has proven to improve performance in some applications. This Software Utility has been included in the MAGMA CardBus CD that you received with your expansion chassis. You should install the MAGMA CardBus Software Utility **BEFORE** connecting the CardBus-to-PCI Expansion System to your computer.

Follow these instructions to Install the MAGMA Software Utility:

- PC
- Windows Install
- setup.exe

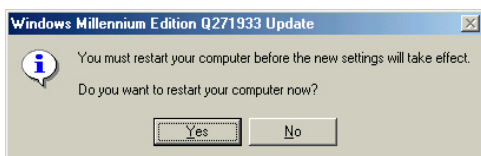
or you can download the latest MAGMA CardBus Software Utility from our web site at www.magma.com/support/support.htm.

MAGMA

While installing the MAGMA CardBus Driver, do not answer YES to any Restart Windows until you are told to '**Power off the system**'. There is a *Microsoft Updater* that you must install first, without rebooting.

First, you will see a *Windows Millennium Edition QZ71933 Update* Window appear asking if you want to continue. Choose YES. This will install a *Microsoft Prefetch Memory Patch*. *Prefetch Memory* was not originally supported under Windows 98SE or Windows ME through the CardBus slot and some applications will not perform properly without the *Prefetch Memory Patch* installed. Even if your application does not require *Prefetch Memory*, there is no harm installing this patch.

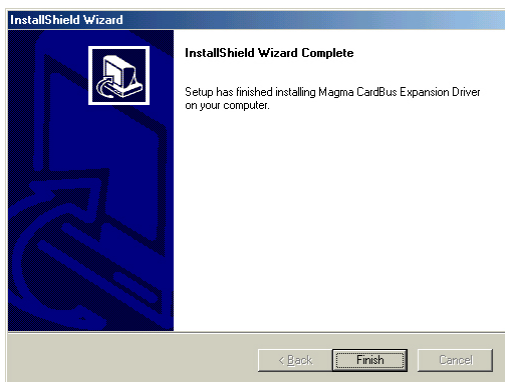
After the *Windows Millennium Edition QZ71933 Update* is complete, the following Window will appear:



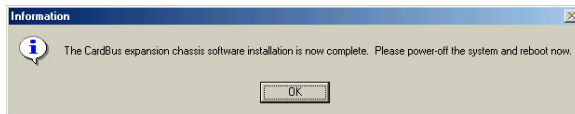
VERY IMPORTANT → DO NOT RESTART → CLICK

No

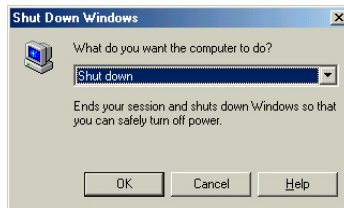
A few seconds later, the following *InstallShield Wizard* Window will appear:



Click  and an *Information* Window will appear:



You should now **Shut down** the computer. This means, **Turn off** your computer completely.

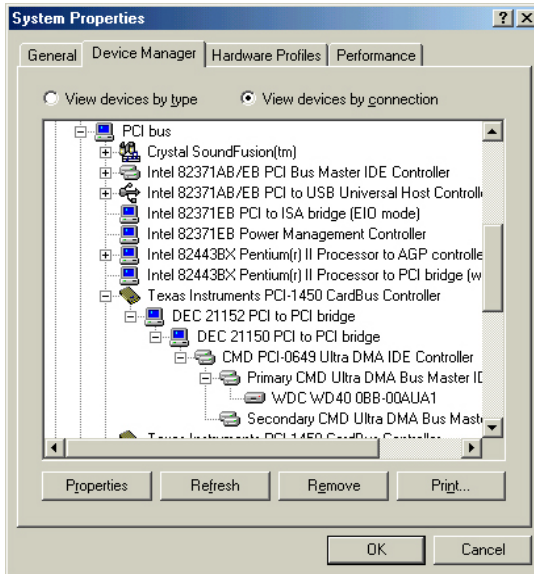


After you have **Shut down** completely, connect the expansion chassis to your computer by following the Step-by-Step Instructions included in Chapter Two: Quick Start Guide. It is important to apply power to the expansion chassis first, and then apply power to your computer. As your system comes back up, several *New Hardware Found* Windows will appear. The first Window will display: **DEC Bridge PCI to PCI 21152 found** and a second Window will display: **DEC Bridge PCI to PCI 21150 found**.

If PCI cards are installed in the expansion chassis, you may be prompted to load or locate drivers. Follow the instructions you see on the screen and install the drivers just as you would on a desktop computer. (You should refer to the procedures for installing drivers that was included with the third-party PCI device(s) you are installing.) If prompted to reboot, do so.

Verify Installation

Go to Start → Settings → Control Panel → System → Device Manager (make sure 'View device by connection' is chosen) → Open ACP (BIOS) → Open PCI Bus → Click the '+' sign several times until you reach the DEC Bridge 21150 PCI to PCI Bridge. Under this entry you should see any hardware that is installed in the expansion chassis. (In the following example, there is a CMD IDE Controller and IDE disk drive installed in the expansion system.)

**NOTE**

A utility called **PCIScope** is also useful for verification and debugging purposes. See Page 32 for more information.

Windows NT Instructions

**WARNING**

You **WILL** be prompted to Shut Down and Reboot your system several times during software installation. Please be patient, each Shut Down and Reboot does serve a purpose and is required for correct installation. If you Shut Down and Reboot when requested, it may save you from having to make a call to MAGMA Technical Support.

**NOTE**

Prior to installing the MAGMA CardBus Driver, you should be familiar with the installation procedures for the PCI cards that you are installing in the expansion chassis. Some PCI card manufacturers recommend that you install their software driver(s) prior to installing the hardware. If this is the case, you should install their driver before you connect and power up the expansion chassis. You may be required to reboot before connecting the expansion chassis.

**NOTE**

Under Windows NT, you **MUST** connect the MAGMA expansion chassis to your computer **BEFORE** installing the MAGMA CardBus Driver.

MAGMA CardBus Drivers are required for Windows NT. Follow the Step-by-Step Instructions included in Chapter Two: Quick Start Guide prior to installing the MAGMA CardBus Driver. It is important to apply power to the expansion chassis first, and then apply power to your computer.

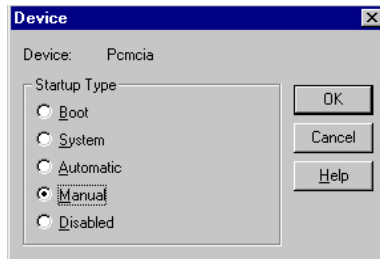
**WARNING**

You must be logged in as 'System Administrator' while installing the MAGMA expansion chassis. You must remain logged in as 'System Administrator' until installation is complete.

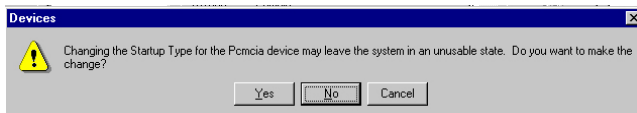
Special Instructions for Windows NT Service Pack 6

If you are running Windows NT Service Pack 6, you must disable **Pcmcia** under **Control Panel** before installing the MAGMA CardBus Driver. If you are not running Service Pack 6, you may skip to page 20.

Go to **Start** → **Settings** → **Control Panel** → **Devices** → **Pcmcia** → **Startup...** → Choose **Manual**

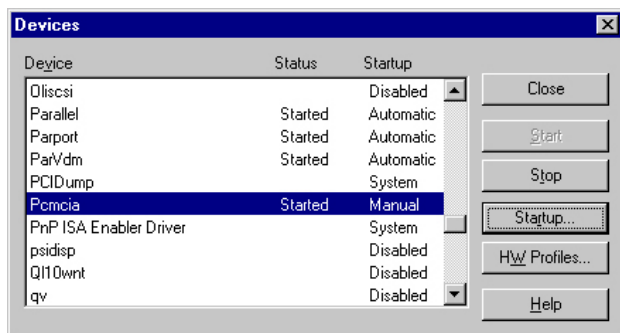


Click  and the following *Devices* Window will appear:



Click . The *Devices* Window should now look like this:

MAGMA



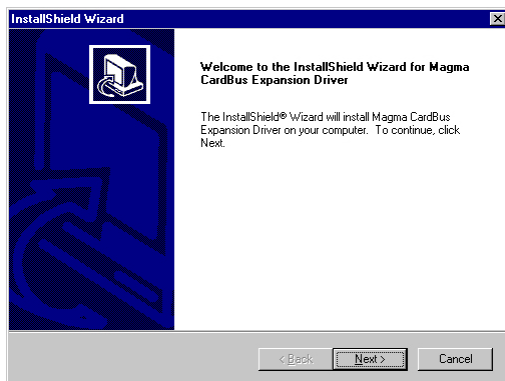
Click .


Install the MAGMA CardBus Driver included on the MAGMA CardBus CD:

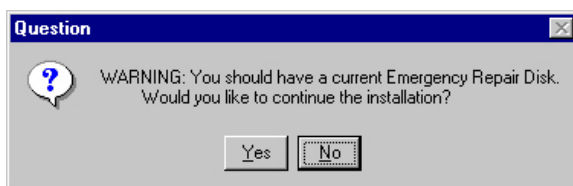


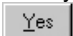
or you can download the latest MAGMA CardBus driver from our web site at www.magma.com/support/support.htm.

The following *InstallShield Wizard* Window will appear:

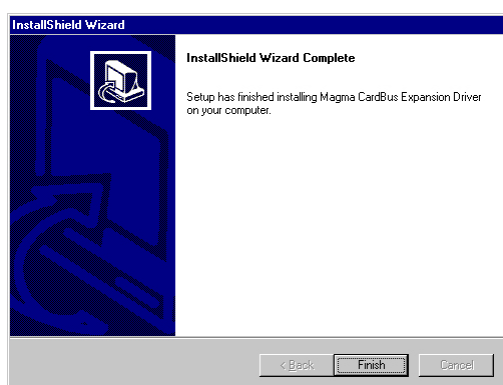


Click  and the following *Question* Window will appear:

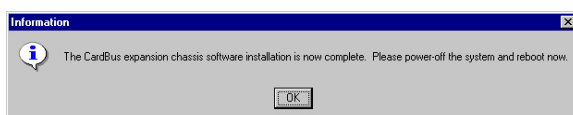


Make sure that you have a current Emergency Repair Disk prepared and Click .

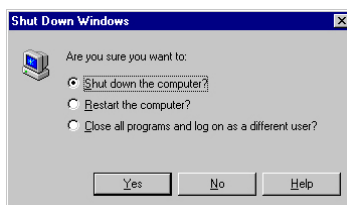
The following *InstallShield Wizard* Window will appear:



Click  and an *Information* Window will appear:



You should now **Shut down the computer**. This means, **Turn off** your computer completely.



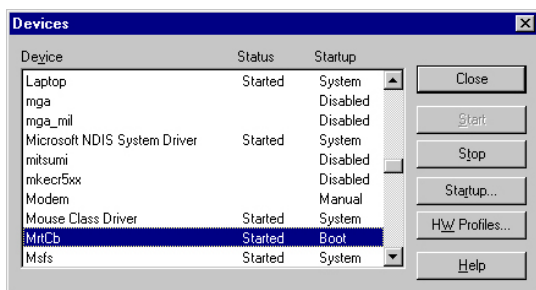
MAGMA

After you have **Shut down** completely, it's time to power-up again

As your system comes up, if PCI cards are installed in the expansion chassis, you may be prompted to load or locate drivers. Follow the instructions you see on the screen and install the drivers just as you would on a desktop computer. (You should refer to the procedures for installing drivers that was included with the third-party PCI device(s) you are installing.) If prompted to reboot, do so.

Verify Installation

Go to **Start** → **Settings** → **Control Panel** → **System** → **Devices** → You should see a device called **MrtCb** listed as shown below:



MAGMA CardBus Driver installation is complete. You should now proceed to Step Eight in Chapter Two: Quick Start Guide.



NOTE

A utility called **PCIScope** is also useful for verification and debugging purposes. See Page 32 for more information.



WARNING

After installation of a new Microsoft Service Pak, you should always reinstall the MAGMA CardBus Driver.

Windows 2000 Instructions



WARNING

You **WILL** be prompted to Shut Down and Reboot your system several times during software installation. Please be patient, each Shut Down and Reboot does serve a purpose and is required for correct installation. If you Shut Down and Reboot when requested, it may save you from having to make a call to MAGMA Technical Support.



NOTE

Prior to installing the MAGMA CardBus Driver, you should be familiar with the installation procedures for the PCI cards that you are installing in the expansion chassis. Some PCI card manufacturers recommend that you install their software driver(s) prior to installing the hardware. If this is the case, you should install their driver before you connect and power up the expansion chassis. You may be required to reboot before connecting the expansion chassis.



NOTE

Under Windows 2000, you **MUST** connect the MAGMA expansion chassis to your computer **BEFORE** installing the MAGMA CardBus Driver.

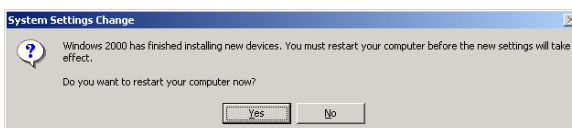
MAGMA CardBus Drivers are required for Windows 2000. Follow the Step-by-Step Instructions included in Chapter Two: Quick Start Guide prior to installing the MAGMA CardBus Driver. It is important to apply power to the expansion chassis first, and then apply power to your computer.



WARNING

You must be logged in as 'System Administrator' while installing the MAGMA expansion chassis. You must remain logged in as 'System Administrator' until installation is complete.

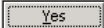
The first time your system boots up, with the expansion chassis connected, the following *System Settings Change* Window will appear:





WARNING

Although you have not installed the MAGMA CardBus Driver yet, it is important that you answer **'Yes'** to the above question and **restart your computer**.

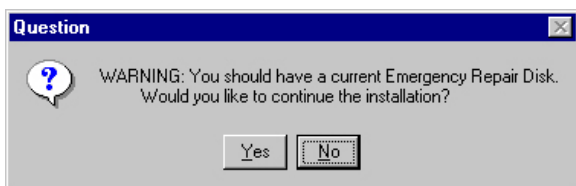
Click . Your computer will restart.

After your system comes up, install the MAGMA CardBus Driver included on the MAGMA CardBus CD:



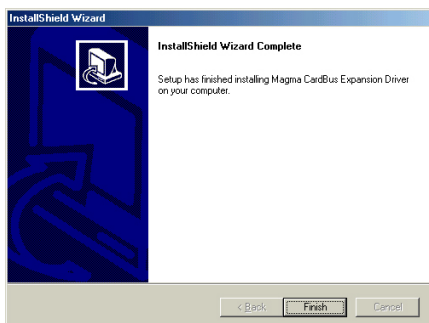
or you can download the latest MAGMA CardBus driver from our web site at www.magma.com/support/support.htm.

The following *Question* Window will appear:

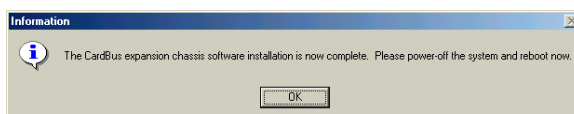


Make sure that you have a current Emergency Repair Disk prepared.

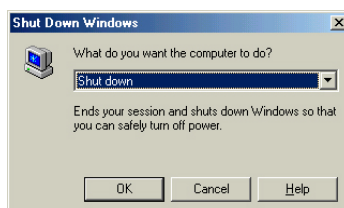
Click  and the following *InstallShield Wizard* Window will appear:



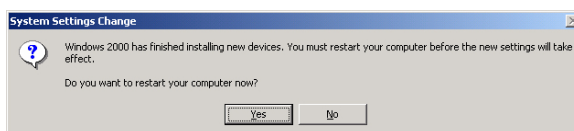
Click  and an *Information* Window will appear:

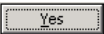


You should now **Shut down** the computer. This means, **Turn off** your computer completely.




After you have **Shut down** completely, it's time to power-up again. The following *System Settings Change* Window will appear.



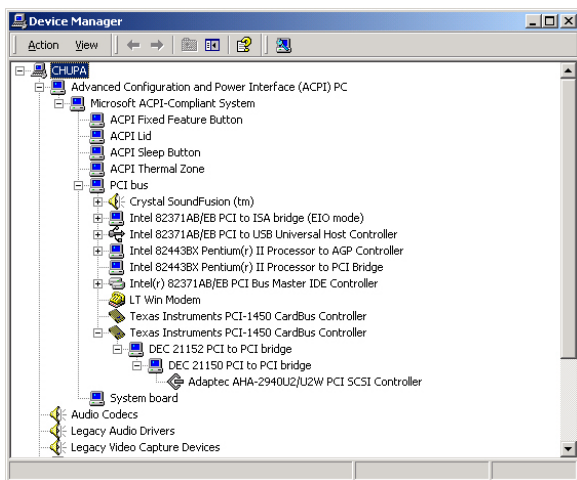
Click . Your computer will reboot.

As your system comes up, if PCI cards are installed in the expansion chassis, you may be prompted to load or locate drivers. Follow the instructions you see on the screen and install the drivers just as you would on a desktop computer. (You should refer to the procedures for installing drivers that was included with the third-party PCI device(s) you are installing) If prompted to reboot, do so.

Verify Installation

Go to  Start → Settings → Control Panel → System → Device Manager (make sure 'View device by connection' is chosen) → Open ACP (BIOS) → Open PCI Bus → Click the '+' sign several times until you reach the DEC Bridge 21150 PCI to PCI Bridge. Under this entry you should see any hardware that is installed in the expansion chassis. (In the following example, there is an Adaptec AHA-2940U2U2W PCI SCSI Controller installed in the expansion system.)

MAGMA



MAGMA CardBus Driver installation is complete. You should now proceed to Step Eight in [Chapter Two: Quick Start Guide](#).



NOTE

A utility called **PCIScope** is also useful for verification and debugging purposes. See Page 32 for more information.



WARNING

After installation of a new Microsoft Service Pak, you should always reinstall the MAGMA CardBus Driver.

Windows XP Instructions



WARNING

You WILL be prompted to Shut Down and Reboot your system several times during software installation. Please be patient, each Shut Down and Reboot does serve a purpose and is required for correct installation. If you Shut Down and Reboot when requested, it may save you from having to make a call to MAGMA Technical Support.

**NOTE**

Prior to installing the MAGMA CardBus Driver, you should be familiar with the installation procedures for the PCI cards that you are installing in the expansion chassis. Some PCI card manufacturers recommend that you install their software driver(s) prior to installing the hardware. If this is the case, you should install their driver before you connect and power up the expansion chassis. You may be required to reboot before connecting the expansion chassis.

**NOTE**

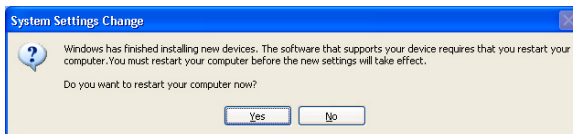
Under Windows XP, you **MUST** connect the MAGMA expansion chassis to your computer **BEFORE** installing the MAGMA CardBus Driver.

MAGMA CardBus Drivers are required for Windows XP. Follow the Step-by-Step Instructions included in [Chapter Two: Quick Start Guide](#) prior to installing the MAGMA CardBus Driver. It is important to apply power to the expansion chassis first, and then apply power to your computer.

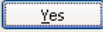
**WARNING**

You must be logged in as 'System Administrator' while installing the MAGMA expansion chassis. You must remain logged in as 'System Administrator' until installation is complete.

The first time your system boots up, with the expansion chassis connected, the following *System Settings Change* Window will appear:

**WARNING**

Although you have not installed the MAGMA CardBus Driver yet, it is important that you answer '**Yes**' to the above question and **restart your computer**.

Click . Your computer will reboot.

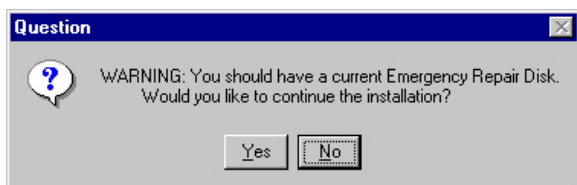
MAGMA

After your system comes up, install the MAGMA CardBus Driver included on the MAGMA CardBus CD:



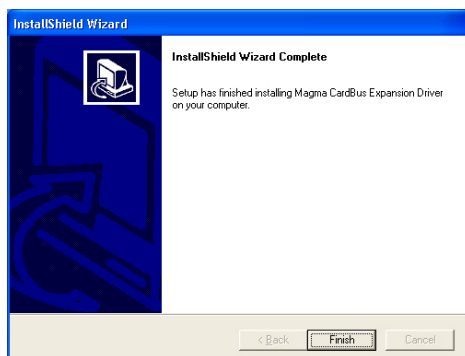
or you can download the latest MAGMA CardBus driver from our web site at www.magma.com/support/support.htm.

The following *Question* Window will appear:

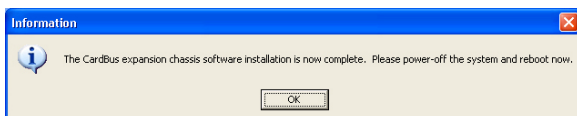


Make sure that you have a current Emergency Repair Disk prepared.

Click  and the following *InstallShield Wizard* Window will appear:



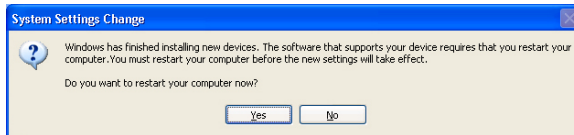
Click  and a final *Information* Window will appear:

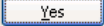


You should now **Turn off computer**. This means, **Shut down** your computer completely.




After you have **Turned off computer** completely, it's time to power-up again. The following *System Settings Change* Window will appear.

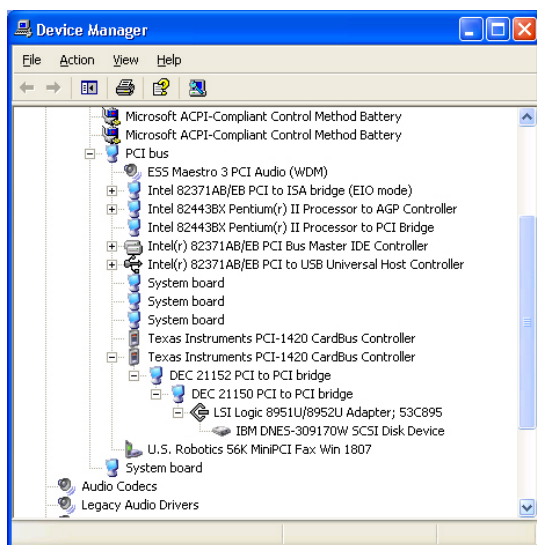


Click . Your computer will reboot.

As your system comes up, if PCI cards are installed in the expansion chassis, you may be prompted to load or locate drivers. Follow the instructions you see on the screen and install the drivers just as you would on a desktop computer. (You should refer to the procedures for installing drivers that was included with the third-party PCI device(s) you are installing) If prompted to reboot, do so.

Verify Installation

Go to  Start → Control Panel → Printers and Other Hardware → System → Hardware → Device Manager (make sure 'View device by connection' is chosen) → ACPI → Microsoft ACPI-Compliant System → PCI Bus → Click the '+' sign several times until you reach the DEC Bridge 21150 PCI to PCI Bridge. Under this entry you should see any hardware that is installed in the expansion chassis. (In the following example, there is an ATTO PCI SCSI Controller [LSI Logic 8950U...] installed in the expansion system.)



MAGMA CardBus Driver installation is now complete. You should now proceed to Step Eight in [Chapter Two: Quick Start Guide](#).



NOTE

A utility called **PCIScope** is also useful for verification and debugging purposes. See Page 32 for more information.



WARNING

After installation of a new Microsoft Service Pak, you should always reinstall the MAGMA CardBus Driver.

How to Uninstall the MAGMA CardBus Driver

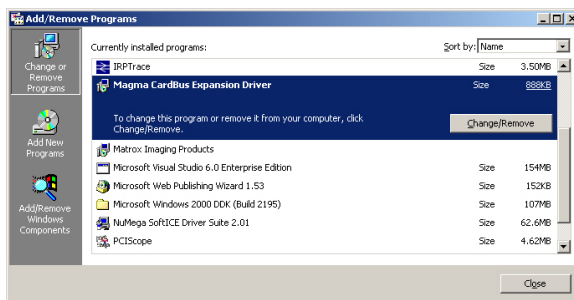
Windows 98SE, Windows ME, Windows NT

Go to **Start** → **Settings** → **Control Panel** → **Add/Remove Programs** → Choose either **MAGMA CardBus Expansion Driver** (or if you have an older driver loaded, it may appear as **Mobility CardBus Expansion Driver**) → then choose **Add/Remove**.



Windows 2000 and Windows XP

Go to **Start** → **Settings** → **Control Panel** → **Add/Remove Programs** → Choose either **MAGMA CardBus Expansion Driver** (or if you have an older driver loaded, it may appear as **Mobility CardBus Expansion Driver**) → then choose **Change/Remove**.



PCIScope

PCIScope is a powerful tool designed by a Germany company called APSOft. This software utility is a valuable resource to explore, examine and debug the PCI subsystem of your computer. It was made to fit the requirements of the most demanding users, especially engineers, programmers and system administrators, and to integrate all advanced functions and tools into one product. Please visit www.tssc.de for more information about the capabilities of **PCIScope** and other utilities offered by APSOft.

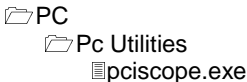
An evaluation version of **PCIScope** is included on the MAGMA CardBus CD. (You can purchase a license from APSOft for use beyond the evaluation period for \$49.95.)

PCIScope has proven to be extremely useful when verifying and debugging configurations involving a MAGMA PCI Expansion System under any Windows platform.

PCIScope can provide information to you and our Technical Support Group such as, PCI Bus Numbering and Resource Allocation; among other information that may prove useful when debugging expansion chassis or PCI card problems.

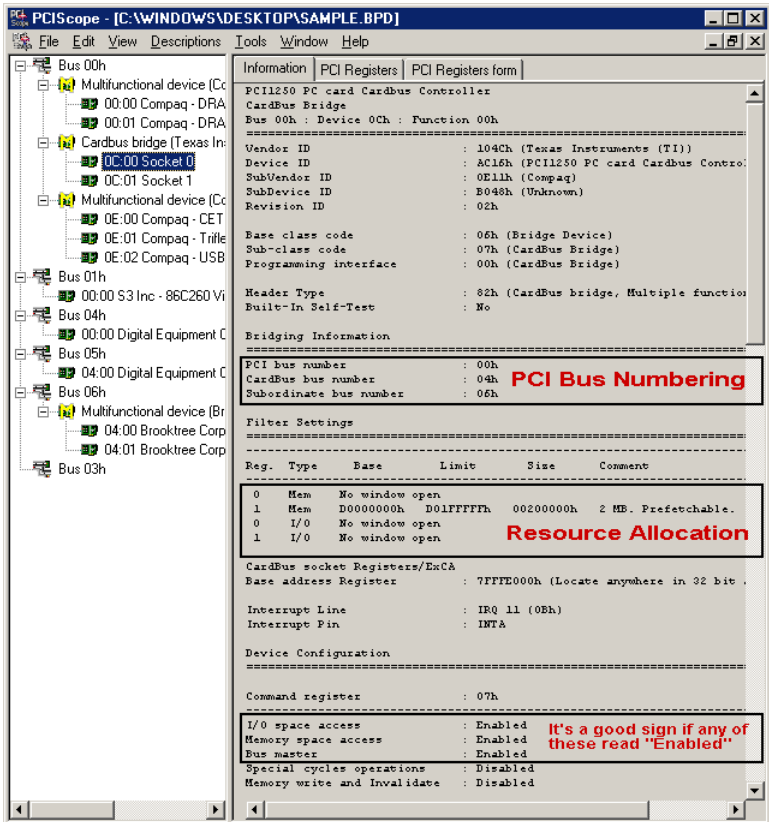
If you are experiencing problems setting up your system, you should run **PCIScope** before contacting the MAGMA Technical Support Group.

With the MAGMA expansion chassis powered up and connected to your computer, load and launch the **PCIScope** application by double-clicking its icon on the MAGMA CardBus CD:



or you can download the latest MAGMA CardBus Driver/Utility from our web site at www.magma.com/support/support.htm.

The **PCIScope** Program will be installed on your computer and a window similar to the one shown below will appear. (The below example was taken from a Compaq Armada 7400)



You should save this data as a *.bpd file on your computer. You may be requested to email this file to support@magma.com if you are experiencing configuration problems.

In addition, Windows NT, Windows 2000 and Windows XP users may also be requested to produce and email another file to support@magma.com. This one is a *.log file. To create the *.log file, follow these instructions:

1. Locate a file called **dbgview.exe** on the MAGMA CardBus CD.
2. Double-click on the file **dbgview.exe**
3. While the **dbgview** screen is open, locate and double-click on a file called **dump.exe** on the MAGMA CardBus CD.
4. Switch back to the **dbgview** screen, which is now filled with data.
5. Save this file and email to support@magma.com upon request.

APPENDIX C DC Power Information

DC Power Options

Because the CB1 Systems operate on DC power, users have the option to run off any **user supplied** 12-volt DC power source, such as a battery set, car-lighter adapter, etc., (provided they use the proper cabling). MAGMA offers an optional 6-foot long battery cable (CBLCB1XLR) for use with CB1 systems. The cable provides connection to the CB1 chassis on one end, and includes a 4-pin Male XLR connector on the other end, which fits the majority of 12-volt professional battery packs.

This cable may be purchased directly from MAGMA for use with the CB1. Please visit our web site at www.magma.com for more information.

The CB1 System is designed to accommodate DC input in the range 9-16 VDC (the most common voltages for batteries in this industry), and draw a maximum load of 45 Watts. Please use this information when consulting with your local audio/video supplier when reviewing battery options, and sizing.

Battery Sizing/Selection:

For Batteries Rated in Amp Hours:

Use the following table for matching desired operating hours to battery capacity ratings.

CB1 Max Rated Load (Watts): 45 Watts

Margin of Safety For Battery Selection: 10%

Column 1 Desired Continuous Operating Hours	Column 2-4 Amp Hours		
	12VDC*	13.2VDC*	14.4VDC*
1	4.1	3.8	3.4
2	8.3	7.5	6.9
3	12.4	11.3	10.3
4	16.5	15.0	13.8
5	20.6	18.8	17.2
6	24.8	22.5	20.6
7	28.9	26.3	24.1
8	33.0	30.0	22.5

*Typical Battery Output Voltage

Notes:

1. This table applies to CB1 systems only. Do NOT use for CB2 systems.
2. Calculations assume continuous operation at maximum designed load.
3. Margin of safety used is 10%.
4. Determine the number of Desired Continuous Operating Hours you would like to operate before recharging. (Column 1)
5. Determine the Battery Output Voltage of the battery you would like to use. (Column 2-4)
6. Read the cell value in the table for the Amp Hours required. Use this number when choosing a battery (or set of batteries).
7. If you required more than 8 hours- use multiples of a lesser number of hours.

Examples:

If you want 5 hours of continuous operation with a 14.4VDC battery set: Locate row 5 in Column 1 of the table above, read across the row to the 14.4VDC Column, you will find that you will need a battery (or set of batteries) with a total power rating of about 17 Amp Hours.

If you want 10 hours of continuous operation with this same battery set (at 14.4VDC), would need a total power rating of about 34 Amp Hours (2 x 17 from the above example).

For Batteries Rated in Watt Hours:

If the vendor rates the batteries in Watt Hours, then simply multiply the number of desired hours of use by 45 to get total Watt Hours rating requirement.

If you want to run the CB1 for up to 4 hours: 4 hours x 45 Watts = 180 Watt Hours is required for the selected battery set.

