



# IMPORTANT NOTICE ABOUT INSTALLATION MSC-2Dx N

Copyright© 2001 CAT EYE Co., Ltd.  
MSC2DxMM-010604 1 Printed in Japan  
[066600120]



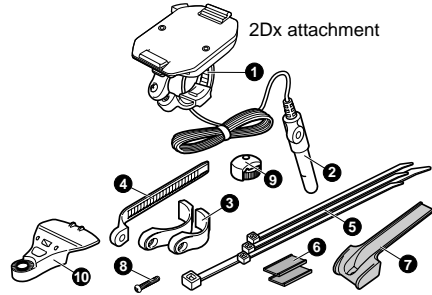
For the sake of easy installation and operation, some components have been changed.

When installing to your bicycle, follow the explanation written in this sheet, not the Quick Start manual.

## Parts

Make sure that the following parts are included in the package.

- 1 Bracket (with 2Dx attachment)
- 2 Sensor
- 3 Sensor Band-A (L/S)
- 4 Sensor Band-B
- 5 Nylon Tie
- 6 Rubber Pad
- 7 Band Holder Pad
- 8 Screw
- 9 Magnet
- 10 Attachment for Aerofork



## Installation

Follow the following instruction 1 - 4.

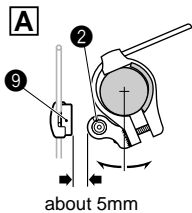


### Important

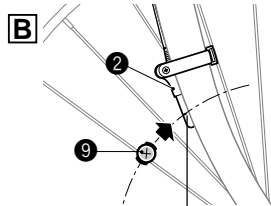
Attach the sensor and the magnet properly so that their positions meet the following conditions **A** and **B**.

**A** The clearance between the sensor 2 and the magnet 9 should be about 5mm.

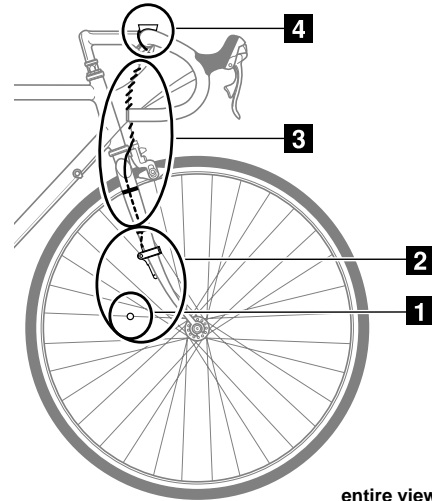
**B** Align center of the magnet 9 and the marking line of the sensor 2 while rotating the front wheel.



about 5mm



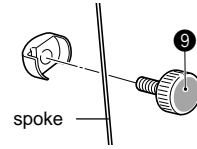
marking line



entire view

## 1 Magnet

Attach the magnet 9 temporarily to the right side spoke of the front wheel.

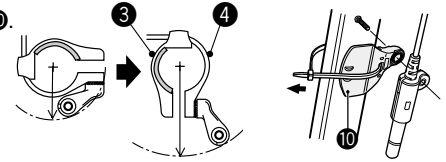
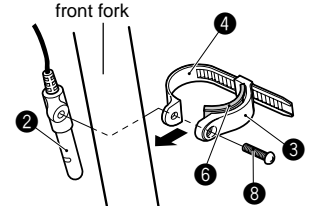


## 2 Sensor

Attach the sensor 2 temporarily to the inside of the right front fork. Adjust the position of the sensor 2 and the magnet 9 so that it meets the conditions **A** and **B** in the "Important" column. Fasten them tightly.

**Reference:** If the clearance between the speed sensor and the magnet is wide, mount the sensor band 3 4 in an opposite way as shown.

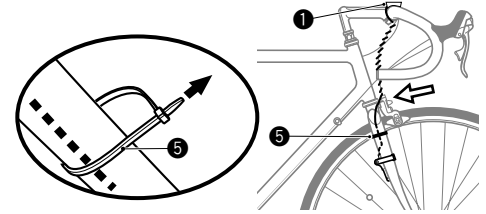
In case of aerofork, apply the attachment 10.



## 3 Wire

Secure the wire along the front fork using the nylon ties 5 and wind it round the brake cable up to handlebar.

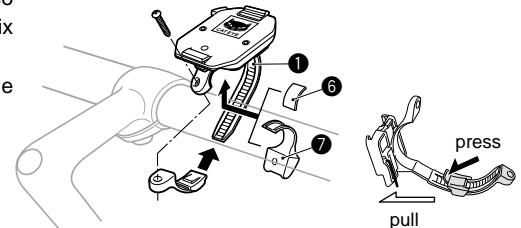
**Note:** Allow enough wire clearance in the area marked with ⇄.



## 4 Bracket

Use the rubber pad 6 or band holder pad 7 so that the bracket's band 1 fits your handlebar. Fix it with the screw.

**Reference:** To release the band, pull it while pushing the area marked with ⇄.



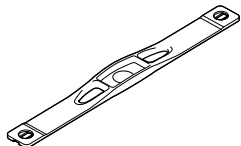
# MSC-2Dx N SPARE ACCESSORIES



#166-5150

**Lithium battery CR2032**

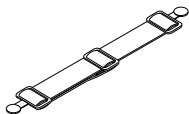
Pile au lithium CR2032  
Lithiumbatterie CR2032  
lithium batterij CR2032  
Batteria al litio CR2032  
Pila de Litio CR2032  
リチウム電池CR2032



#169-9826

**Replacement electrode belt**

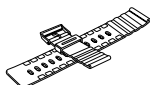
Sangle porte-électrodes  
Elektrodenkurt  
vervanging elektrodeband  
Fascia sensore battito cardiaco  
Correa de Electrodo de Repuesto  
交換用MSC HR電極ベルト



#169-9816

**Attachment belt**

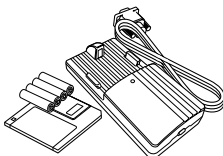
Sangle de fixation  
Befestigungsgurt  
bevestigingsband  
Cinghia di fissaggio sensore battito cardiaco  
Correa de Acoplamiento  
装着ベルト



#249-9980

**Wrist band kit**

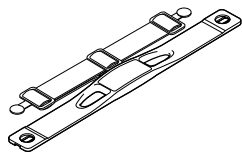
Bracelet  
Handgelenk-Kit  
polsband set  
Cinturino  
Kit de Correa de Muñeca  
リストバンドキット



#240-1001

**PC download kit**

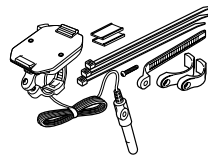
Kit de transfert de données  
#240-1002  
PC-Überspiel-Kit  
#240-1003  
polsband set  
#240-1004  
Kit interfaccia PC  
#240-1005  
Kit para cargar en PC  
#240-1000  
PCダウンロードキット



#169-9806

**MSC Dx chest belt heart rate sensor kit**

Kit de sangles et détecteur de rythme cardiaque MSC-Dx  
Herzfrequenzsensor-Kit für Brustgurt  
MSC Dx borstband met hartslagsensor set  
Kit fascia sensore battito cardiaco MSC DX  
MSC-Dx Kit de Sensor del Ritmo Cardíaco de la Correa Pectoral  
MSC-Dxチェストベルト心拍センサーキット



#249-9990N

**Bracket sensor kit**

Kit de support d'unité principale et détecteur de vitesse  
Halteungsset für Sensor  
bracket sensor set  
Kit supporto sensore velocità  
Kit Soporte del Sensor  
ブラケットセンサーキット



#249-9995

**MSC-2Dx (bracket) attachment**

Adaptateur MSC-2Dx  
Aufsteckplatte (Halteung) für den MSC-2Dx  
MS-2Dx (bracket) bevestiging  
Attacco MSC-2DX  
MSC-2Dx(ブラケット)アタッチメント



#169-9691

**Wheel magnet**

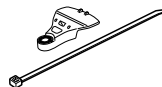
Aimant de roue  
Radmagnet  
wielmagneet  
Magnete ruota  
Imán de Rueda  
ホイールマグネット



#169-9760

**Magnet for composite wheel**

Aimant pour roue en matière composite  
Magnet für Carbonräder  
magneet voor composiet wiel  
Magnete per ruote in materiale composito  
Imán para Ruedas de Palos  
コンポジットホイール用マグネット



#169-9780

**Attachment for Aerofork**

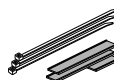
Fixation pour fourche AERO  
Zusatz zur Federgabel  
Bevestiging voor aerovork  
Attacco per forcella aerodinamica  
Sujección para horquilla aerodinámica  
扁平フォーク用アタッチメント



#169-6280

**Universal sensor band**

Collier universel pour détecteur  
Universalband für Sensor  
universele sensorband  
Fascetta universale sensore  
Banda de Sensor Universal  
ユニバーサルセンサーバンド



#249-9970

**Attachment kit**

Kit de fixation  
Montage-Kit  
bevestigingsset  
Kit fascette di fissaggio  
Kit de Acoplamiento  
アタッチメントキット

**CATEYE CO.,LTD.**

2-8-25, Kuwazu, Higashi Sumiyoshi-ku,  
Osaka 546-0041 Japan  
e-mail: service@cateye.com  
URL: <http://www.cateye.com>