

Universal Laptop Docking Station



Targus®

USER GUIDE

Table of Contents

Introduction	3
Package Contents.....	5
System Requirements.....	5
Installing the Device and Drivers.....	6
Connecting New Devices.....	11
Global Suspend Mode.....	16
Targus Always On.....	17
Using USB Devices That Require More Power	17
Product Limitations.....	17
Troubleshooting	18
Technical Support	20
Product Registration.....	21
Warranty.....	21
Regulatory Compliance.....	21

TARGUS UNIVERSAL LAPTOP DOCKING STATION

Introduction

Congratulations on your purchase of the Targus Universal Laptop Docking Station. This portable expansion module allows you to connect through a single USB connection up to 4 USB devices, a network (Ethernet/LAN) connection, speakers and microphone, PS/2 mouse and keyboard, and a serial and parallel device. Also, the lock slot and universal lock support provided helps you secure your docking station to your desktop.

The docking station also features *Targus Always On* technology, Targus USB Power Port providing twice the USB specification for higher power requirement devices, and USB ports that are widely spaced to accommodate larger adapters. *Targus Always On* provides power to the USB ports even when the laptop is shut-down, disconnected from the docking station or in hibernate/stand-by mode. This allows USB devices that charge via the USB port to keep charging under any circumstance.

Features

Heat dissipation by natural convection:

Place the back edge of your laptop on the rubber pads of the Docking Station. Most laptops dissipate heat through the bottom and the more air that's allowed to flow under the bottom, the better chance that heat will dissipate by natural convection.

Comfort

The raised platform also provides a more comfortable position for the hands.

The docking station provides the following ports:

- Two PS/2 ports
- IEEE 1284 DB25 Connector parallel (USB emulated)
- Two 3.5 mm Audio: (1) stereo out and (1) microphone in
- RS232 serial (USB emulated)
- One S/PDIF Digital Audio Output (not supported in Windows 2000)
- RJ-45 Ethernet 10/100
- Four USB 2.0 Ports:
 - Two High-Speed USB 2.0 ports
 - Two High-Speed USB 2.0 Always-On ports with extra power

Package Contents

In addition to this user guide, the package contains:

- Targus Universal Laptop Docking Station
- High-speed USB 2.0 upstream cable
- Driver software CD
- AC power adapter

System Requirements

Hardware

- PC with an Intel® Pentium® processor or equivalent
- CD-ROM drive
- USB version 2.0 port
- AC power source (AC adapter required)



NOTE: WHEN CONNECTED TO A USB VERSION 1.1 PORT ON YOUR COMPUTER, THE DOCKING STATION'S PERFORMANCE LEVEL WILL BE LESS THAN OPTIMAL. FOR BEST RESULTS, CONNECT IT TO A USB VERSION 2.0 PORT.

Operating System

- Windows® 2000 Service Pack 4 or
- Windows® XP Service Pack 3 or
- Windows Vista™ Service Pack 1

Installing the Device and Drivers

To use the Targus docking station, you must first install the driver onto your computer.



WARNING: You must install the software before connecting the docking station to your computer. Otherwise, the docking station will not work properly.

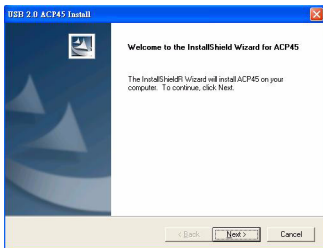
After installing your software, connect the docking station to your computer and Windows plug-and-play will install the hardware drivers for each port.

Installing the Docking Station Driver

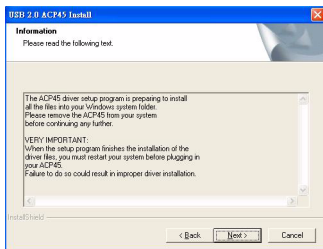
Installing the docking station driver enables your operating system to recognize it and its ports once it's connected.

- 1 Turn on your computer.
- 2 Insert the driver software CD into your computer's CD-ROM drive.

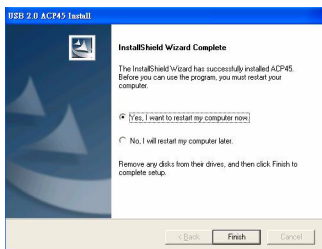
If setup does not begin automatically, click **Start, Run**, and enter **D:\ACP45_setup.exe** (where **D:** is the path of your CD-ROM drive) and then click **OK**.



- 3 The *Installation Wizard* window of the docking station will pop up. Click **Next** to proceed.



- 4 The *Information* window will pop up. Click **Next** to proceed. **In order to install the driver files properly, you must restart your system before plugging in the docking station.**



- 5 Choose ***Yes, I want to restart my computer now.*** Click **Finish** and restart your computer when prompted.

Connecting the Docking Station to Your Computer

After installing the docking station software, you are ready to connect the docking station to your computer. To do this:

- 1 Connect the supplied AC power adapter to the AC power jack on the docking station.
- 2 Connect one end of the USB cable to the docking station and the other end into an available USB 2.0 port on your computer.



WARNING: THE DOCKING STATION WILL NOT FUNCTION PROPERLY WITHOUT THE AC ADAPTER PLUGGED INTO AN AC OUTLET.

DO NOT CONNECT ANY DEVICES TO THE DOCKING STATION UNTIL THE INSTALLATION IS COMPLETED.

Installing the Default Device Drivers

Once you connect the docking station to your computer, the default drivers begin installing for each of the ports automatically.



NOTE: PLEASE ENSURE YOU HAVE THE LATEST SERVICE PACKS INSTALLED.

Some hardware devices may prompt you to install the drivers.

To install the drivers:

- 1 Select *Install the software automatically (Recommended)* and click **Next**.

The *Found New Hardware Wizard* program begins installing the hardware drivers.

The *Completing the Found New Hardware Wizard* screen appears.

- 2 Click **Finish** and repeat as needed for each device.
- 3 Restart your computer.

LED Status Indicator Lights

Once all device drivers are installed, the USB LED status indicator lights on the back of the docking station glow when you connect devices to the docking station.

- Green Tx light illuminates when connected to a network and the yellow Rx light flashes when data is transmitting to or from the network.

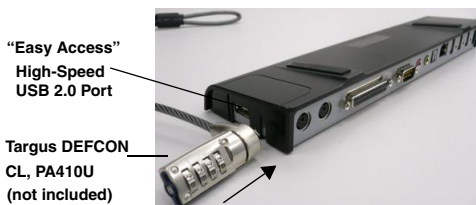


NOTE: THE DOCKING STATION SUPPORTS HOT SWAPPING OF THE NETWORK CABLE.

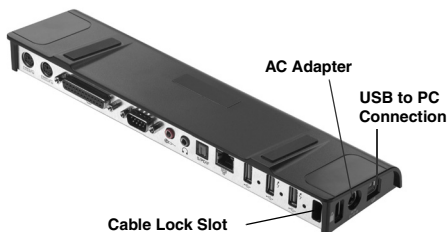
Targus Universal Laptop Docking Station



Docking Station ports



Docking Station Left-Side View



Docking Station Right-Side View

Connecting New Devices

To avoid possible damage when connecting a new device, do not force the cable connector into the port on the docking station. If the cable connector does not attach smoothly, turn the connector over and try attaching it again.

Connecting a Serial Mouse / Keyboard

To connect a serial mouse or keyboard, attach the cable connector to the serial port on the docking station.

Connecting a PS/2 Mouse / Keyboard

To connect a PS/2 mouse or keyboard, attach the cable connector to the PS/2 port on the docking station.

Connecting and Configuring a Serial Modem

To connect a serial modem:

- 1 Attach the cable connector to the serial port on the docking station.
- 2 Install the modem software driver according to the instructions that come with the device.
- 3 When prompted to select the port, choose the Serial USB (COMx), where x is the COM port number assigned by your operating system.

Connecting a Parallel Printer

To connect a parallel printer:

- 1 Attach the cable connector to the parallel port on the docking station.
- 2 Go to **Start** button of your Window OS, and click on **Printers and Faxes**. Add your printer driver by following the instructions of the *Add Printer Wizard*.

Connecting a PDA

- 1 Attach the cable connector to the serial port on the docking station.
- 2 Verify that the COM port setting, in either your HotSync® or ActiveSync® software, matches the setting on the docking station.

To verify the COM port setting on the docking station, refer to “Verifying Devices are Installed” on page 18.


To verify the COM port setting on your PDA, refer to the documentation that came with it.

Connecting to a Local Area Network

To connect an Ethernet cable with an RJ-45 connector, attach the cable connector to the Ethernet/network port on the docking station. Additional procedures to connect to an actual network depend on the type of network you are using. Contact your network administrator for detailed instructions.

Connecting a USB Device

To connect a USB device, plug it into a USB port on the docking station and follow the additional instructions provided with the device.

All four USB ports meet USB High-speed requirements by providing 480Mbps and 500mA of power. However, the two USB ports on the right side denoted by this symbol  have two unique features - Always On and High Power. See “Targus Always On” on page 17 for more details, and “Using USB Devices That Require More Power” on page 17.

The other USB ports (one on the side and the other on the back next to the Ethernet port) are ports that provide the standard 500 mA of power.

Connecting and Configuring an Audio Device

- 1 Plug your headphones or speakers into the green 3.5mm *Audio Out* port on the docking station.
- 2 To connect a microphone, plug it into the mono *Audio In* port.
- 3 To enable your headphones or speakers, you must first choose USB PnP Sound Device in the Properties Settings.

For Windows 2000, click **Start, Settings, Control Panel**, and then open the **Sounds and Multimedia** folder. Select the **Audio** tab. Under **Sound Playback**, change **Preferred Device** to **USB PnP Sound Device** from the drop down list.

Click **Apply**, then click **OK**.

For Windows XP, go to the **Control Panel** and choose **Sound and Audio**. Select the **Audio** tab. Under **Sound Playback**, change **Preferred Device** to **USB PnP Sound Device** from the drop down list.

Click **Apply**, then click **OK**.

For Windows Vista, go to the **Control Panel** and choose **Hardware and Sound**. Select **Sound**. Under the **Playback** tab, select **Digital Output** of the **USB PnP Sound Device**.

Click **Set Default**.

4 Make sure the volume is not set to *MUTE*.



NOTE: AUDIO DEVICES WILL NOT WORK SIMULTANEOUSLY ON THE PORT STATION AND THE HOST COMPUTER.



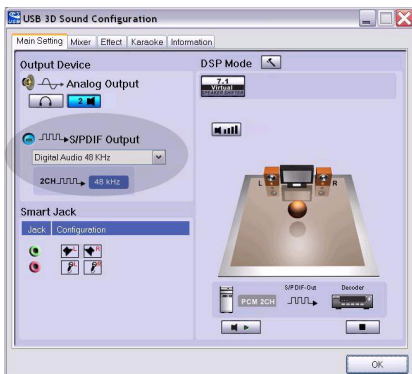
CAUTION: ALL AUDIO OR MULTIMEDIA APPLICATIONS MUST BE TERMINATED BEFORE SWITCHING BETWEEN THE PORT STATION AUDIO OUTPUT AND THE HOST COMPUTER AUDIO OUTPUT.

Installing and Configuring a S/PDIF (Sony/ Philips Digital Interface) Device

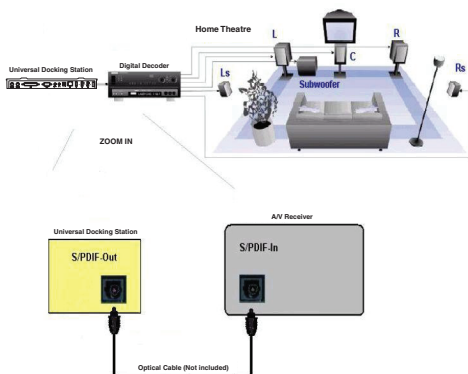
- 1 In order to enable S/PDIF, you have to turn it on. This can be done by opening the USB 3D Sound Configuration applet located in your system tray (click on the USB icon to open up the Configuration Screen).



- 2 Click on the button next to the S/PDIF Output text to enable S/PDIF.
- 3 Set the Audio Output from the Tray.



- 4 Plug your optical cable (not included) into the S/PDIF-Out port of docking station on one end, and the S/PDIF-In port of Digital Decoder or Speaker on the other end.



- 5 Connect your Digital Decoder or Speaker to the Home Theater System.

Global Suspend Mode

When your computer is in suspend mode, the docking station also enters suspend mode to avoid power consumption. When your computer wakes up, the docking station wakes up automatically.

Targus Always On

The two USB ports that provide up to 1 Amp of power will continue providing power even when the laptop is powered down or disconnected from the docking station. This allows you to charge any USB device you connect to these ports without powering your laptop.

Using USB Devices That Require More Power

Some devices, which use large amounts of power, such as printers and optical drives, should be plugged into the High Power USB Ports. These ports will provide up to 1000 mA of power - double the power of a standard USB ports.

Product Limitations

Some devices may halt temporarily when a high data transfer is occurring. For example, your mouse may respond slowly while a graphic print job is printing or while you are experiencing heavy network traffic.

We recommend the following guidelines:

- Do not transfer data to or from multiple high-speed devices, such as a digital camera or scanner, at the same time.
- If speed degradation does occur, close other programs that use a USB device to improve device performance.

Troubleshooting

Device Not Working

- Make sure that the device is fully inserted into the correct port on the docking station.
- Plug the device into a different port on the docking station. If it still doesn't work, test the device by connecting it directly to your computer.
- Verify that you ran the Setup or Install program for the device.
- Make sure that the device appears in Device Manager. For more information refer to "Verifying Devices are Installed" on page 18.
- Disconnect all devices from the docking station and reconnect them, one at a time. Check that each device works before plugging in the next one.
- Each USB port is equipped with over-current protection. Should a USB device draw more current than the USB port can supply, the port will shut down. To re-enable the port, unplug the device and go to *Device Manager* or to the message in the system tray and choose the **Reset** option. You can then plug the device back into the USB port. If a shut down reoccurs, check the power requirements of the device.

Verifying Devices are Installed

You can view the devices installed on the docking station from the Device Manager window in System Properties.

Right-click **My Computer, Properties**, then click the **Hardware** tab, and then the **Device Manager** button.

From the Device Manager window, expand the following:

- Human Interface Devices - displays keyboards and pointing devices: mice, trackballs, and joysticks
- Keyboards — displays PS/2 keyboards
- Mice and Other Pointing Devices - displays PS/2 mouse
- Network Adapters — displays ASIX AX88772A USB 2.0 fast Ethernet Adapter
- Ports (COM & LPT) — Prolific USB-to-Serial Comm Port (COM X)
- Sound, Video and Game Controllers — displays USB PnP Sound Device
- Universal Serial Bus controllers — displays the other devices installed for the docking station and generic hub

Verifying a Serial Modem Connection

When attaching a modem to the serial (RS232) port, verify that the port assigned to your modem is Serial USB (COMx), where x is the number of the COM port.

If the operating system does not detect automatically that your modem is assigned to Serial USB (COMx), run the Hardware Wizard again and choose **Select** from the list instead of **Autodetect**. Then, select use **Prolific Device from Page** as the COM port.

Error Message on Your PDA

If the error message “Connection Not Established” appears on your PDA, check that the COM port setting in either your HotSync or ActiveSync software matches the setting on the docking station. See “Verifying Devices are Installed” on page 18 to verify the COM port setting on the docking station.

Some older versions of the Palm[®] Desktop software are not compatible with the USB to Serial conversion. Please contact your PDA vendor for software updates.

Technical Support

For technical questions, please visit:

US

Internet: www.targus.com/support.asp

Australia

Internet: www.targus.com/au

Email: infoaust@targus.com

Telephone: 1800-641-645

New Zealand

Telephone: 0800-633-222

Product Registration

Targus recommends that you register your Targus accessory shortly after purchasing it. To register your Targus accessory, go to:

<http://www.targus.com/registration.asp>

You will need to provide your full name, email address, country of residence and product information.

Warranty

Targus warrants this product to be free from defects in materials and workmanship for one year. If your Targus accessory is found to be defective within that time, we will promptly repair or replace it. This warranty does not cover accidental damage, wear and tear, or consequential or incidental loss. Under no conditions is Targus liable for loss of, or damage to a computer; nor loss of, or damage to, programs, records, or data; nor any consequential or incidental damages, even if Targus has been informed of their possibility. This warranty does not affect your statutory rights.

Regulatory Compliance

This device complies with Part 15 of the FCC Rules. Operation is subject to the following two conditions: (1) This device may not cause harmful interference, and (2) This device must accept any interference received,

including interference that may cause undesired operation.

FCC Statement

Tested to Comply

This equipment has been tested and found to comply with the limits of a Class B digital device, pursuant to Part 15 of the FCC Rules. These limits are designed to provide reasonable protection against harmful interference in a residential installation. This equipment generates, uses, and can radiate radio frequency energy and if not installed and used in accordance with the instructions, may cause harmful interference to radio communications. However, there is no guarantee that interference will not occur in a particular installation. If this equipment does cause harmful interference to radio or television reception, which can be determined by turning the equipment off and on, the user is encouraged to try to correct the interference by one or more of the following measures:

- Reorient or relocate the receiving antenna;
- Increase the separation between the equipment and receiver;
- Connect the equipment into an outlet on a circuit different from that to which the receiver is connected;
- Consult the dealer or experienced radio/TV technician for help.

Changes or modifications not authorized by the party responsible for compliance could void the user's authority to operate this product.

Palm and HotSync are a registered trademarks of Palm, Inc. Microsoft, Windows, Windows Vista and ActiveSync are either registered trademarks or trademarks of Microsoft Corporation in the United States and/or other countries. All trademarks and registered trademarks are the properties of their respective owners. All rights reserved. Features and specifications subject to change without notice. © 2008, Targus Group International, Inc. and Targus, Inc, Anaheim, CA 92806 USA.



Targus®

Visit our website at www.targus.com

Features and specifications are subject to change without notice.

© 2008 Targus Group International, Inc. and Targus, Inc., Anaheim, CA 92806 USA.

ACP45US / 410-0391-001C

CE

FC

N2953