

# Panasonic Broadcast Mechanical Parts List

MODEL: **AJ-HPM100P/E/MC**

---

---


Note:

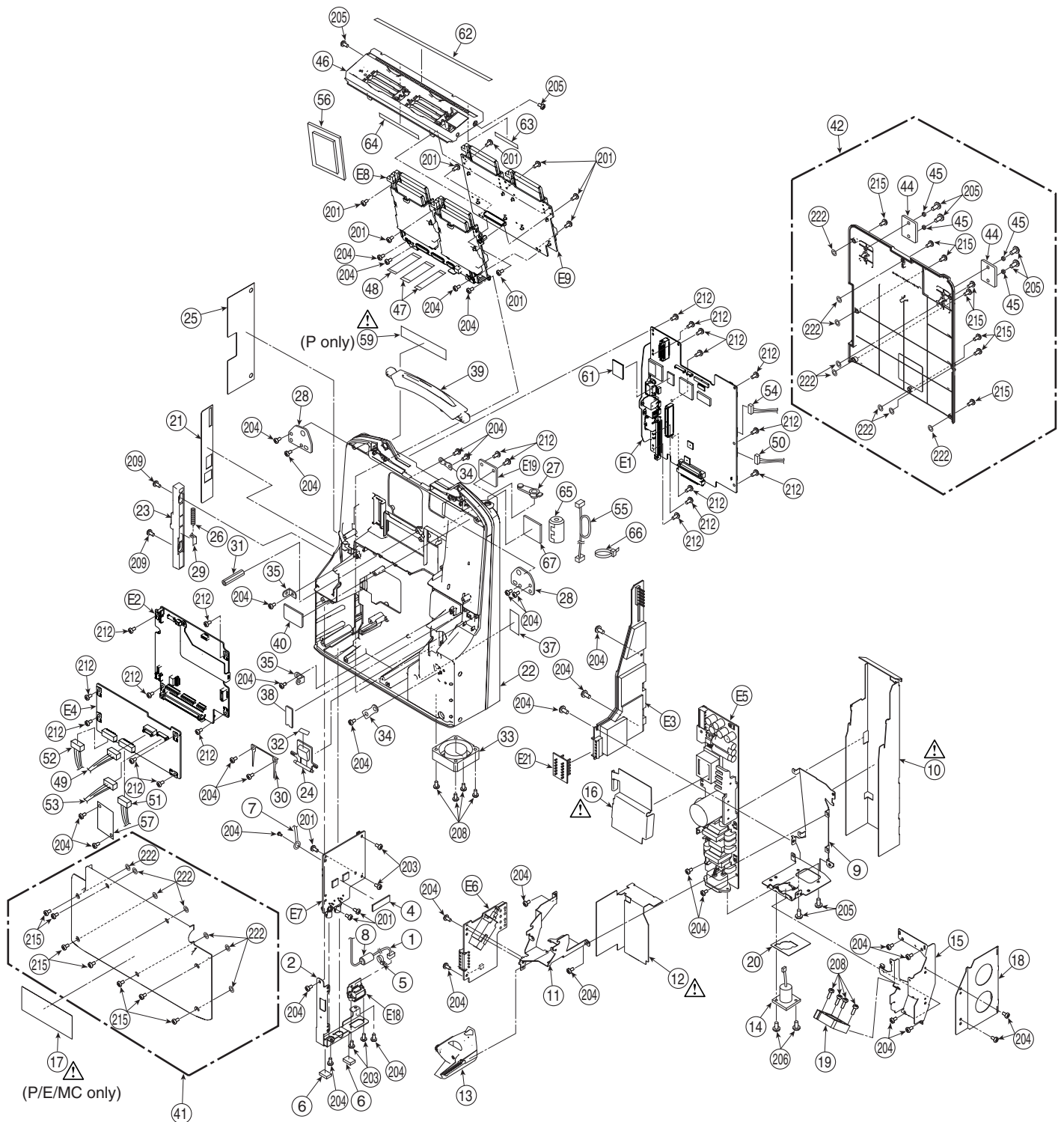
1. \*Be sure to make your orders of replacement parts according to this list.
2. Unless otherwise specified, all resistors are in OHMS, K=1,000 OHMS, all capacitors are in MICROFARADS ( $\mu$ F), P= $\mu$  $\mu$ F.
3. The P.C. Board unit marked with "■" shown below the main assembled parts.
4. The parts marked with ⊕ on the exploded view show the electric parts.
5. IMPORTANT SAFETY NOTICE  
Components identified with the mark  $\triangle$  have the special characteristics for safety. When replacing any of these components, use only the same type.
6. The marking (RTL) indicates the retention time is limited for this item.  
After the discontinuation of this assembly in production, it will no longer be available.
7. "M" in Remark column indicates needed in the periodical maintenance.

## CONTENTS

CASING PARTS ASSEMBLY (1).....	MPL-1
CASING PARTS ASSEMBLY (2).....	MPL-3
CASING PARTS ASSEMBLY (3).....	MPL-5
PACKING PARTS .....	MPL-7

# CASING PARTS ASSEMBLY (1)

Components identified with the mark  have the special characteristics for safety. When replacing any of these components, use only the same type.




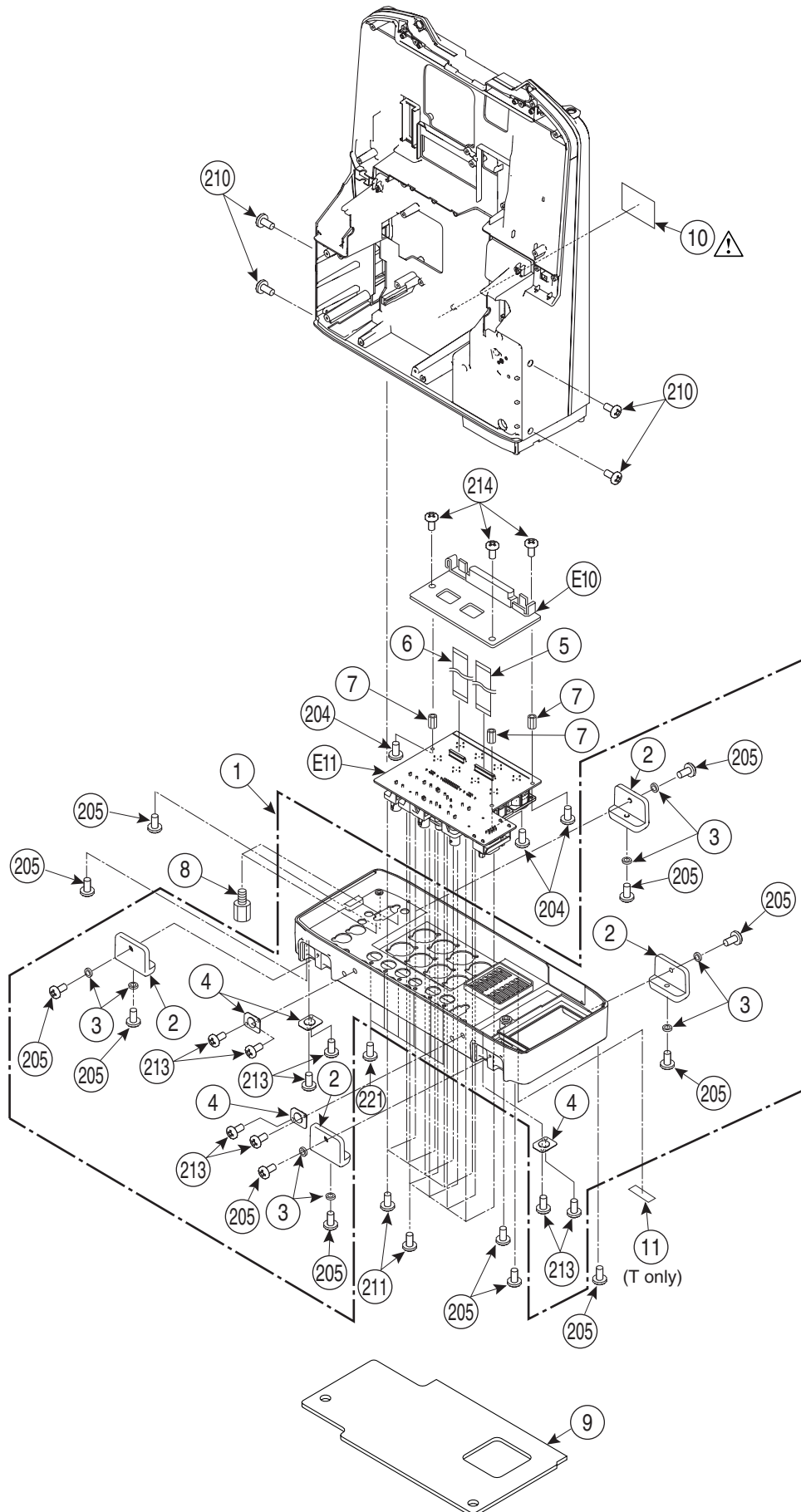
# CASING PARTS ASSEMBLY (1)

Components identified with the mark  $\Delta$  have the special characteristics for safety. When replacing any of these components, use only the same type.

Ref.No.	Part No.	Part Name & Description	Pcs	Remarks	Ref.No.	Part No.	Part Name & Description	Pcs	Remarks
1	VEE1B44	1394 CABLE	1		215	XSB3+10FJK	SCREW	15	
2	VMP8741	SD BNC ANGLE	1		222	VMX3348	WASHER	15	
4	VGQ8752	COOLING SHEET R2	1						
5	VJF1158	BINDER	1						
6	VMT1809	GASKET	2		E1	VEP83671A	AVIO P. C. BOARD	1	
7	VJF1535	COATING CLIP	1		E2	VEP83670A	CODEC P. C. BOARD	1	
8	JOKG00000001	FERRITE CORE	1		E3	VEP81253A	DCDC1 P. C. BOARD	1	
9	VMP8744	POWER UNIT BACK ANGLE	1		E4	VEP81256A	DCDC2 P. C. BOARD	1	
$\Delta$ 10	VMZ3665	INSULATION SHEET BOTTOM	1		E5	VEP81251A	AC 1N P. C. BOARD	1	
11	VSC5938	POWER SW SHIELD ANGLE	1		E6	VEP81252A	DC 1N P. C. BOARD	1	
$\Delta$ 12	VMZ3666	INSULATION SHEET POWER SW A	1		E7	VEP83672A	SD1 P. C. BOARD	1	
13	VGUOA63	POWER SW KNOB	1		E8	VEP80D73A	CARD 1F1 P. C. BOARD	1	
14	VEE1D17	DC1N HERNESS	1		E9	VEP80D73B	CARD 1F2 P. C. BOARD	1	
15	VMP8745	POWER UNIT FAN ANGLE	1		E18	VEP80D12H	1394 CN P. C. BOARD	1	
$\Delta$ 16	VMZ3668	INSULATION SHEET DC OUT	1		E19	VEP80D77A	HEADPHONE P. C. BOARD	1	
$\Delta$ 17	VQL1K80	CAUTION LABEL	1	FOR AJ-HPM100P/E	E21	VEP81257A	POWER CN P. C. BOARD	1	
$\Delta$ 17	VQL1K81	CAUTION LABEL	1	FOR AJ-HPM100MC					
18	VMP8746	POWER UNIT SIDE ANGLE	1						
19	L6FAYYYD0006	FAN MOTOR	1						
20	VJF1556	DC IN JACK COVER SHEET	1						
21	VGH4911	SIDE JACK NAME PLATE	1						
22	VGM2180	MAIN FRAME	1						
23	VGQ9194	SIDE DOOR LACTH	1						
24	VGUOA64	POWER SW BUTTON	1						
25	VYF3127	DOOR U	1						
26	VMB4077	SIDE DOOR LACTH SPRING	1						
27	VMG1759	PHONE JACK COVER	1						
28	VMP8727	HANDLE ANGLE	2						
29	VMP8728	SIDE DOOR LACTH ANGLE	1						
30	VMP8742	POWER SW SPRING	1						
31	VMS7800	POST(SQ-25)	1						
32	VQL1K83	POWER SW SHEET	1						
33	L6FAYYYD0006	FAN MOTOR	1						
34	VSC5934	TOP EARTH ANGLE	2						
35	VSC5936	CENTER PANEL EARTH ANGLE	2						
37	VMZ3667	INSULATION SHEET POWER SW B	1						
38	VGFI072	LCD HINGE L COVER SHEET	1						
39	DFKH8008YA	HANDLE U	1						
40	VMZ3689	FRAME HOLE COVER SHEET	1						
41	VYK1Z43	TOP CASE U	1						
42	VYK1Z44	BOTTOM CASE U	1						
44	VKA0394	RUBBER FOOT	2						
45	VMX3574	SPACER	4						
46	VYP9187	CENTER PANEL U	1						
47	VWJ40G7060LO	FLEX CABLE	2						
48	VWJ20H2060LO	FLEX CABLE	1						
49	VEE1D04	DCDC1-DCDC2 CABLE 1	1						
50	VEE1D05	DCDC1-AVIO CABLE 1	1						
51	VEE1D06	DCDC2-AVIO CABLE	1						
52	VEE1D07	DCDC2-CODEC/CARD 1F CABLE	1						
53	VEE1D09	DCDC1-DCDC2 CABLE 2	1						
54	VEE1D10	DCDC1-AVIO CABLE 2	1						
55	VEE1D16	AVIO-HEADPHONE CABLE	1						
56	VMZ3671	CARD FLEX SHEET	1						
57	VMZ3688	DC CABLE SHEET	1						
$\Delta$ 59	VQL4837	SERVICE CAUTION LABEL	1	FOR AJ-HPM100P					
61	VGQ9380	COOLING SHEET C6	1						
62	VGFI065	PUNCHING SHEET	1						
63	VSC5955	HARD GASKET	1						
64	VSC5956	HARD GASKET	1						
65	JOKG00000001	FERRITE CORE	1						
66	VJF1158	BINDER	1						
67	VGQ1712	ANP BASE	1						
201	XYN26+J6FJ	SCREW	11						
203	XSB2+6FJ	SCREW	4						
204	XYN3+J6FJ	SCREW	34						
205	XSB3+6FJK	SCREW	8						
206	XQN26+A4FJ	SCREW	2						
208	XYN3+20FJK	SCREW	8						
209	XSB26+6FJK	SCREW	2						
212	XYN3+J8FJ	SCREW	20						


# CASING PARTS ASSEMBLY (2)

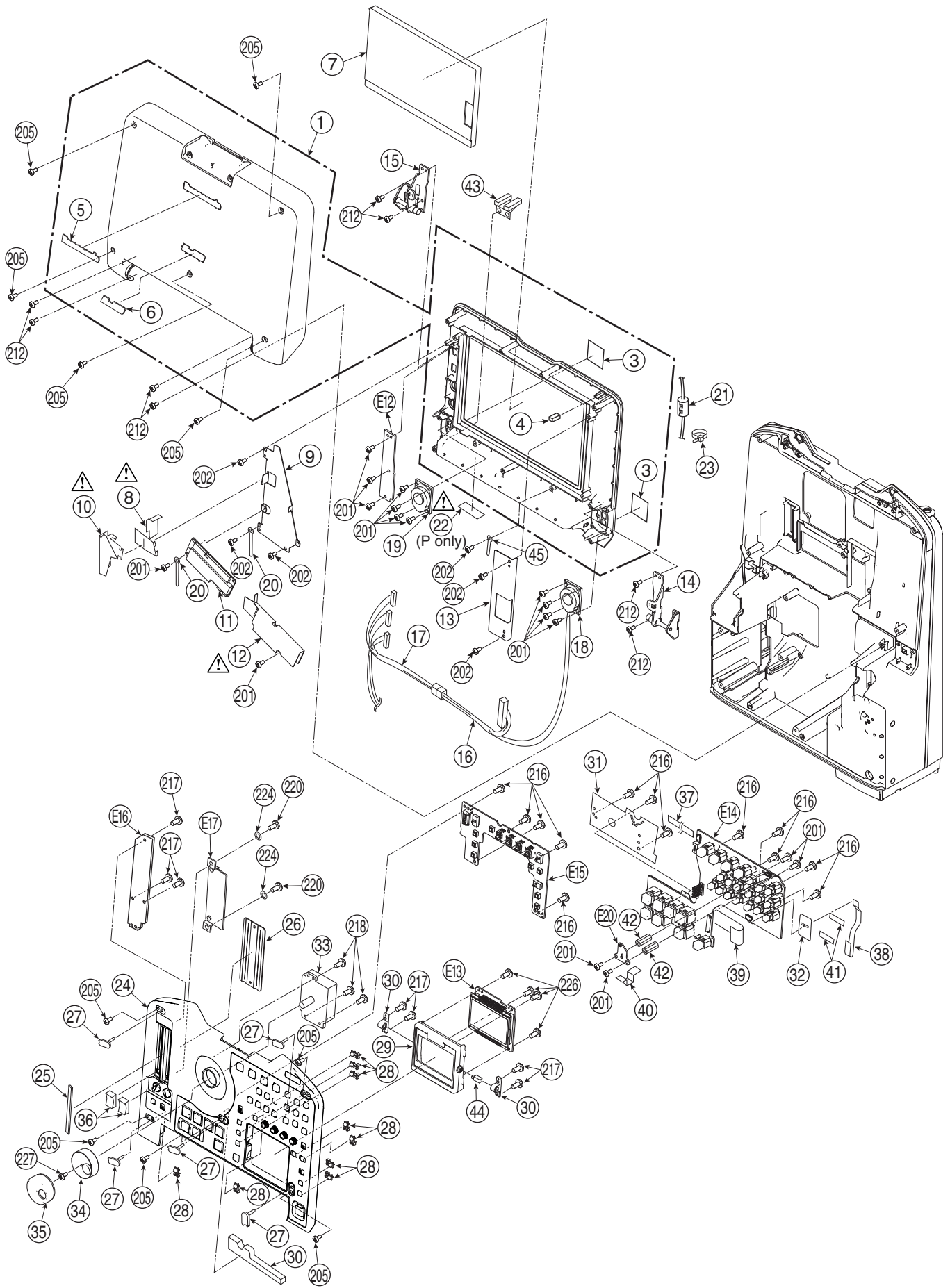
Components identified with the mark  have the special characteristics for safety. When replacing any of these components, use only the same type.





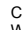
# CASING PARTS ASSEMBLY (3)

Components identified with the mark  have the special characteristics for safety. When replacing any of these components, use only the same type.





# PACKING PARTS

Components identified with the mark  have the special characteristics for safety. When replacing any of these components, use only the same type.

