

Panasonic Broadcast Mechanical Parts List

Model No. : **AJ-HPM110P/E/MC**


Note:

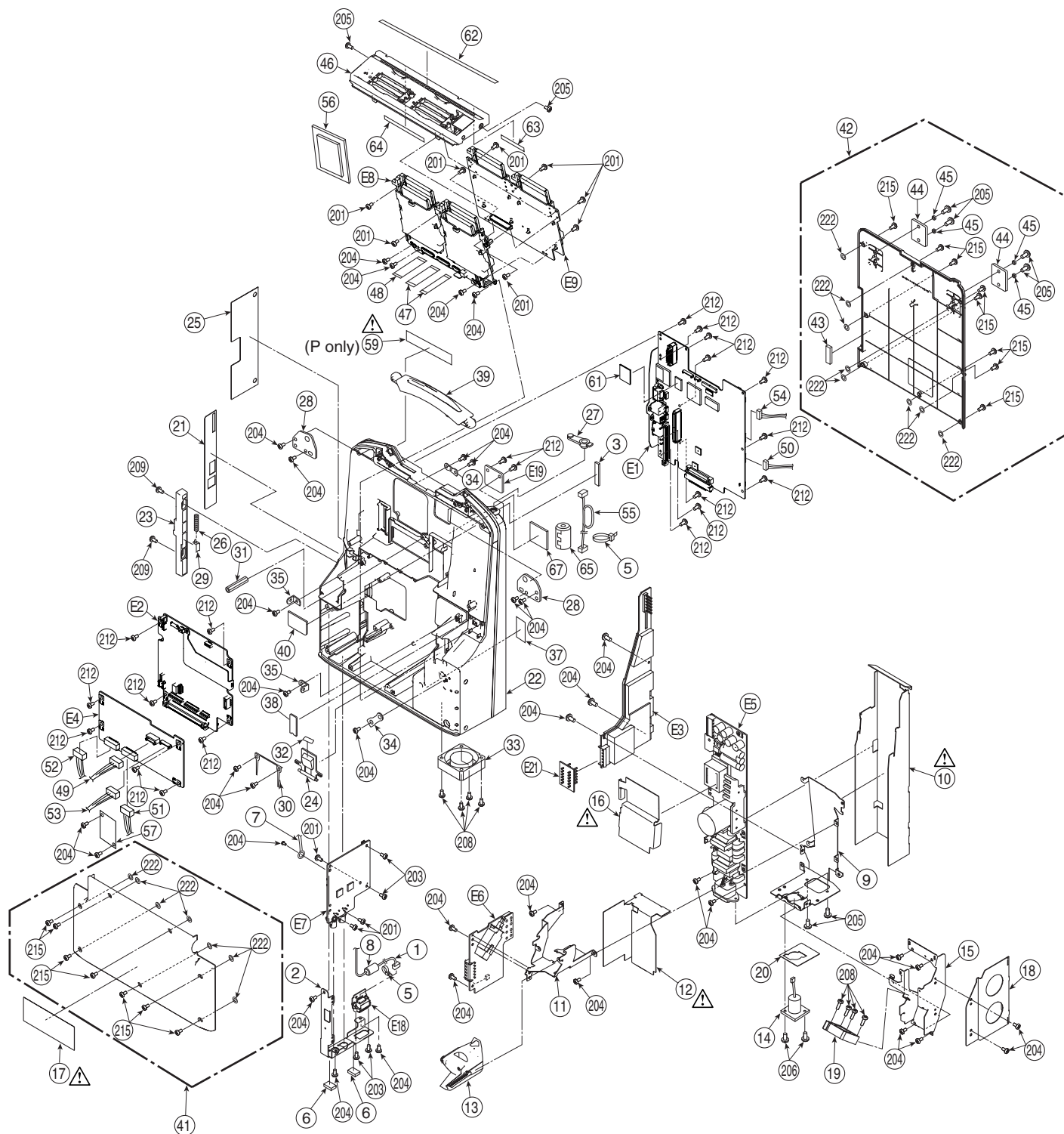
1. *Be sure to make your orders of replacement parts according to this list.
2. Unless otherwise specified, all resistors are in OHMS, K=1,000 OHMS, all capacitors are in MICROFARADS (μ F), P= μ μ F.
3. The P.C. Board unit marked with "■" shown below the main assembled parts.
4. The parts marked with (E) on the exploded view show the electric parts.
5. IMPORTANT SAFETY NOTICE
Components identified with the mark Δ have the special characteristics for safety. When replacing any of these components, use only the same type.
6. The marking (RTL) indicates the retention time is limited for this item.
After the discontinuation of this assembly in production, it will no longer be available.
7. "M" in Remark column indicates needed in the periodical maintenance.

CONTENTS

CASING PARTS ASSEMBLY (1).....	MPL-1
CASING PARTS ASSEMBLY (2).....	MPL-3
CASING PARTS ASSEMBLY (3).....	MPL-5
PACKING PARTS ASSEMBLY.....	MPL-7

CASING PARTS ASSEMBLY (1)

Components identified with the mark  have the special characteristics for safety. When replacing any of these components, use only the same type.




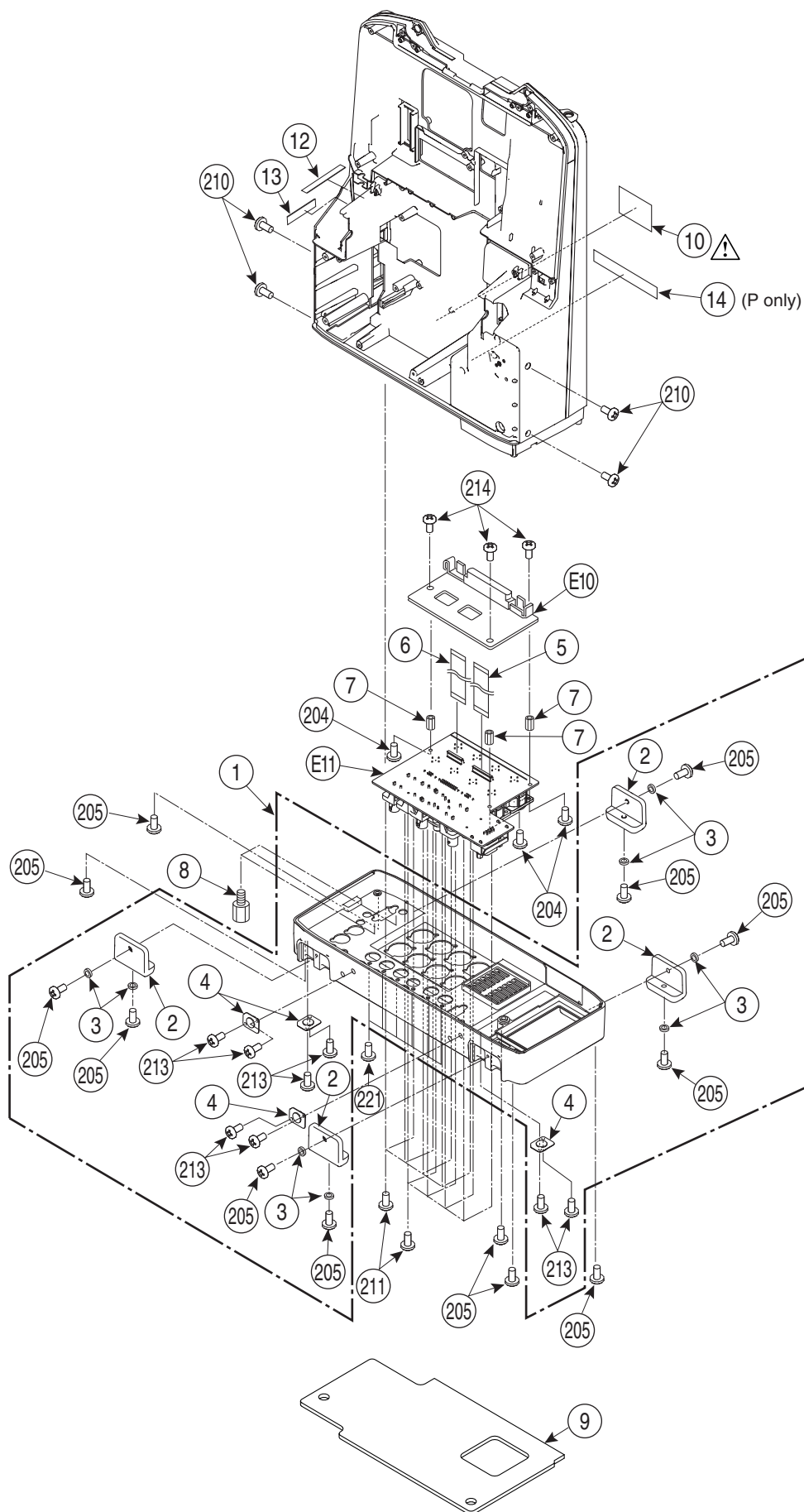
CASING PARTS ASSEMBLY (1)

Components identified with the mark Δ have the special characteristics for safety. When replacing any of these components, use only the same type.


Ref.No.	Part No.	Part Name & Description	Pcs	Remarks	Ref.No.	Part No.	Part Name & Description	Pcs	Remarks
1	VEE1B44	1394 CABLE	1		215	XSB3+10FJK	SCREW	15	
2	VMP8741	SD BNC ANGLE	1		222	VMX1558	NYLON WASHER	15	
3	VMZ3361	PROTECT SHEET	1						
5	VJF1559	CLAMPER	2						
6	VMT1809	GASKET	2						
7	VJF1535	COATING CLIP	1		E1	VEP83683A	AV10 P. C. BOARD	1	
8	VLP0123	FERRITE CORE	1	JOKG00000001	E2	VEP83670C	CODEC P. C. BOARD	1	
9	VMP8744	POWER UNIT BACK ANGLE	1		E3	VEP81253A	DCDC1 P. C. BOARD	1	
Δ 10	VMZ3665	INSULATION SHEET BOTTOM	1		E4	VEP81256B	DCDC2 P. C. BOARD	1	
11	VSC5938	POWER SW SHIELD ANGLE	1		E5	VEP81251B	AC IN P. C. BOARD	1	
Δ 12	VMZ3666	INSULATION SHEET POWER SW A	1		E6	VEP81252B	DC IN P. C. BOARD	1	
13	VGU0A63	POWER SW KNOB	1		E7	VEP83682A	SD1 P. C. BOARD	1	
14	VEE1D17	DCIN HERNESS	1		E8	VEP80D73A	CARD IF1 P. C. BOARD	1	
15	VMP8745	POWER UNIT FAN ANGLE	1		E9	VEP80D73B	CARD IF2 P. C. BOARD	1	
Δ 16	VMZ3668	INSULATION SHEET DC OUT	1		E18	VEP80D12H	1394 CN P. C. BOARD	1	
Δ 17	VQL1K80	CAUTION LABEL	1	FOR AJ-HPM110P/E	E19	VEP80D77A	HEADPHONE P. C. BOARD	1	
Δ 17	VQL1K81	CAUTION LABEL	1	FOR AJ-HPM110MC	E21	VEP81257A	POWER CN P. C. BOARD	1	
18	VMP8746	POWER UNIT SIDE ANGLE	1						
19	L6FAYYYD0006	FAN MOTOR	1						
20	VJF1556	DC IN JACK COVER SHEET	1						
21	VGH4997	SIDE JACK NAME PLATE	1						
22	VGM2272	MAIN FRAME	1						
23	VGG9194	SIDE DOOR LACTH	1						
24	VGU0A64	POWER SW BUTTON	1						
25	VYF3176	DOOR U	1						
26	VMB4077	SIDE DOOR LACTH SPRING	1						
27	VMG1759	PHONE JACK COVER	1						
28	VMP8727	HANDLE ANGLE	2						
29	VMP8728	SIDE DOOR LACTH ANGLE	1						
30	VMP8742	POWER SW SPRING	1						
31	VMS7800	POST (SQ-25)	1						
32	VQL1K83	POWER SW SHEET	1						
33	L6FAYYYD0006	FAN MOTOR	1						
34	VSC5967	TOP EARTH ANGLE	2						
35	VSC5936	CENTER PANEL EARTH ANGLE	2						
37	VMZ3667	INSULATION SHEET POWER SW B	1						
38	VGF1072	LCD HINGE L COVER SHEET	1						
39	DFKH8008YA	HANDLE U	1						
40	VMZ3689	FRAME HOLE COVER SHEET	1						
41	VYK1Z43	TOP CASE U	1						
42	VYK2M75	BOTTOM CASE U	1						
43	VMT1865	GASKET	1						
44	VKA0394	RUBBER FOOT	2						
45	VMX3574	SPACER	4						
46	VYP9254	CENTER PANEL U	1						
47	VWJ40G7060L0	FLEX. CABLE	2						
48	VWJ20H2060L0	FLEX CABLE	1						
49	VEE1D04	DCDC1-DCDC2 CABLE 1	1						
50	VEE1D05	DCDC1-AV10 CABLE 1	1						
51	VEE1D06	DCDC2-AV10 CABLE	1						
52	VEE1D07	DCDC2-CODEC/CARD IF CABLE	1						
53	VEE1D09	DCDC1-DCDC2 CABLE 2	1						
54	VEE1D10	DCDC1-AV10 CABLE 2	1						
55	VEE1D16	AV10-HEADPHONE CABLE	1						
56	VMZ3671	CARD FLEX SHEET	1						
57	VMZ3688	DC CABLE SHEET	1						
Δ 59	VQL4837	SERVICE CAUTION LABEL	1	FOR AJ-HPM110P					
61	VGG9380	COOLING SHEET C6	1						
62	VGF1065	PUNCHING SHEET	1						
63	VSC5955	HARD GASKET	1						
64	VSC5956	HARD GASKET	1						
65	VLP0123	FERRITE CORE	1	JOKG00000001					
67	VGG1712	ANP BASE	1						
201	XYN26+J6FJ	SCREW	11						
203	XSB2+6FJ	SCREW	4						
204	XYN3+J6FJ	SCREW	37						
205	XSB3+6FJK	SCREW	8						
206	XQN26+A4FJ	SCREW	2						
208	XYN3+J20FJK	SCREW	8						
209	XSB26+6FJK	SCREW	2						
212	XYN3+J8FJ	SCREW	20						

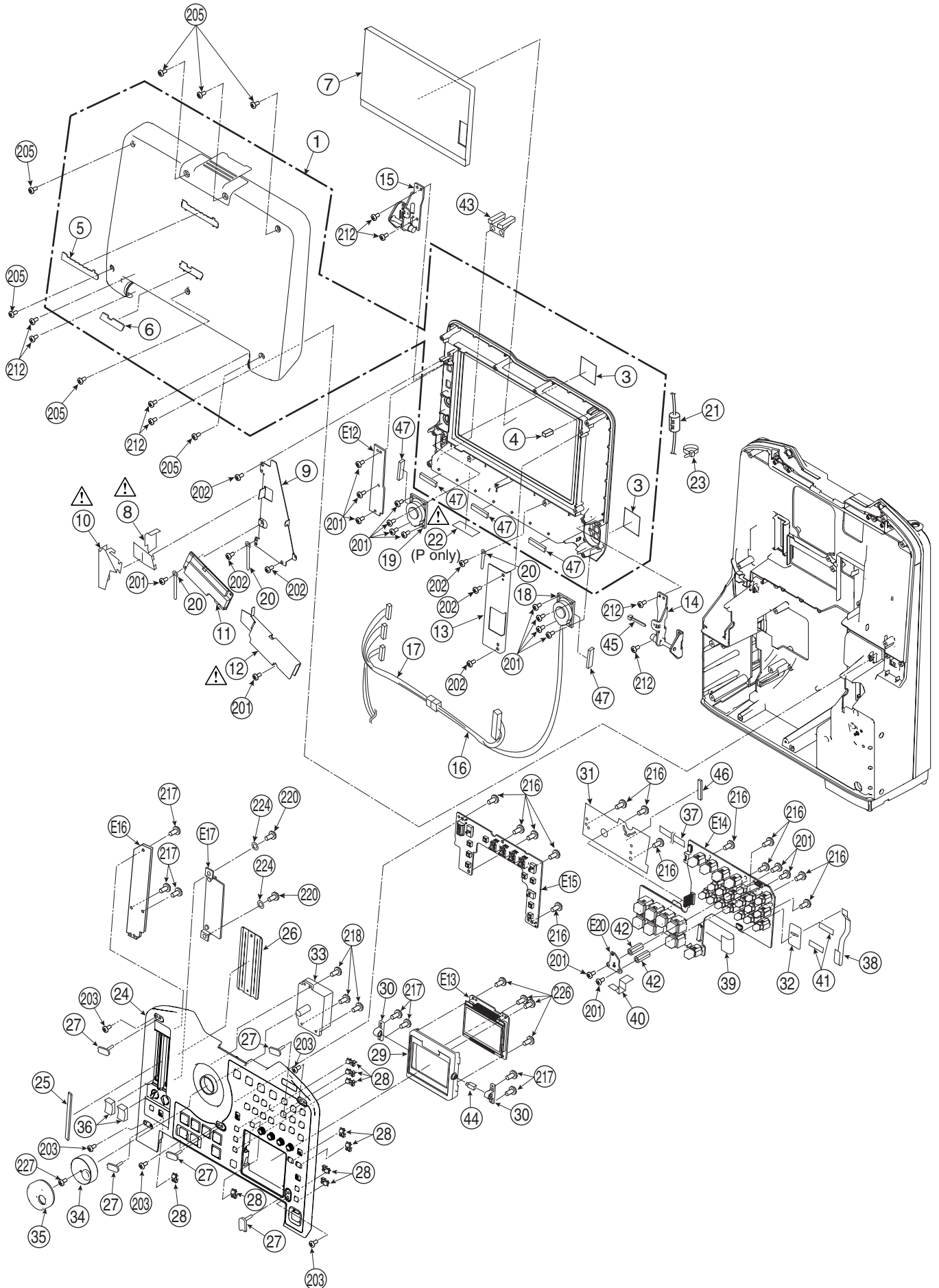
CASING PARTS ASSEMBLY (2)

Components identified with the mark  have the special characteristics for safety. When replacing any of these components, use only the same type.




CASING PARTS ASSEMBLY (3)

Components identified with the mark  have the special characteristics for safety. When replacing any of these components, use only the same type.



PACKING PARTS ASSEMBLY

Components identified with the mark  have the special characteristics for safety. When replacing any of these components, use only the same type.

