



URC-9990

MOSAIC[®]

UK Universal Touch Screen Remote P.2

D

F



User guide p.2

Bedienungsanleitung S.44

Mode d'emploi p.86

 **MOSAIC**®

ONE FOR ALL MOSAIC URC-9990

DD-0201

701571

Table Of Contents

INTRODUCTION	3
INSTALLING BATTERIES	3
LOW-BATTERY INDICATOR	3
USING THE TOUCH SCREEN	4
DEVICE SET-UP	
BY BRAND	5
BY SEARCH	7
BY CODE	8
DELETE	9
NEW CODES (IN CASE OF UPGRADE)	10
PERSONALIZATION	
MACROS	12
MOVE KEY	19
LEARN	22
LABEL KEYS	25
KEY MAGIC	27
VOLUME LOCK	30
VIEW/DELETE	32
HOME THEATER	33
SYSTEM	
UPGRADE (ADDING NEW CODES)	36
LCD	37
SOUND ON/OFF	38
LOCK SETTINGS	39
USER RESET	40
LANGUAGE	41
ABOUT	42
CUSTOMER SERVICE	43
CODES	
TELEVISION	128
VIDEO RECORDERS	135
SATELLITE RECEIVERS	138
CABLE CONVERTERS	141
VIDEO ACCESSORIES	141
CD/MINI DISC	141
PHONO	142
HOME AUTOMATION	142
AMPLIFIERS	142
AMP/TUNERS	142
CASSETTE PLAYERS	143
LASER DISC	143
DAT	143
DVD	143

Introduction

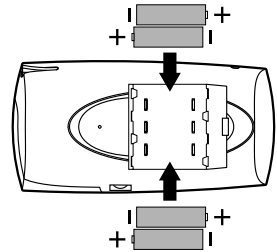
Your ONE FOR ALL MOSAIC is designed to let you use one remote to operate your Video and Audio equipment; any device designed to be operated by an infrared signal. This also includes those devices which operate over 100 kHz. You can choose any combination of 15 devices you would like to operate. The ONE FOR ALL MOSAIC comes available with the world's largest and most efficient database of infrared codes for device compatibility. It is further enhanced by ONE FOR ALL's patented upgrade-ability. Also, what makes the MOSAIC even more unique is the "Learning" feature which allows you to customise any of the special functions of your original remote control onto the keypad of your new ONE FOR ALL.

The following pages explain in simple steps how to customize the ONE FOR ALL MOSAIC to your home entertainment needs.

Installing Batteries

Your MOSAIC needs 4 new "AA/LR6" alkaline batteries .

1. Remove the battery cover from the back of the ONE FOR ALL MOSAIC by pressing down on the tab.
2. Match the batteries to the + and - marks inside the battery case, then insert the batteries.
3. Press the battery cover back in place.

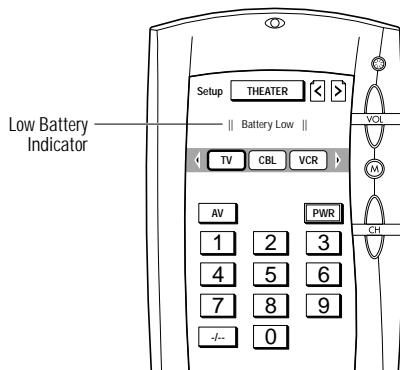


Low-Battery Indicator

Whenever the batteries need replacement, the MOSAIC will emit a "beep sound" (even if the sound is turned off). The MOSAIC will indicate this as well on the top portion of the screen with a "Battery Low" message.

At this point, only the control functions will work and all of the MOSAIC's DEVICE SETUP and PERSONALIZATION parameters will be disabled to prevent accidental loss of any entered commands should the batteries run out.

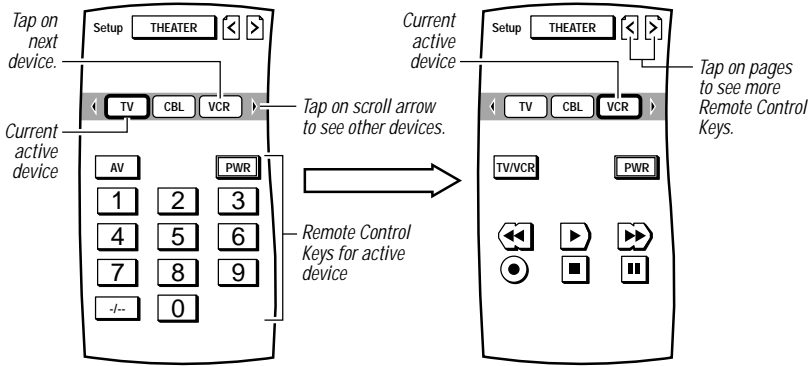
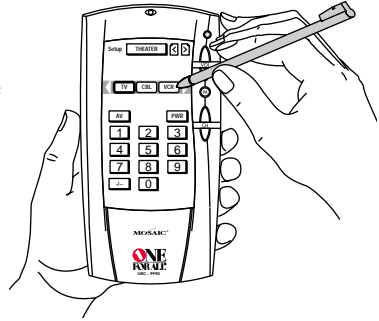
Simply replace the batteries as soon as possible. Press any IR key and the MOSAIC will be restored to its full functionality, complete with your favourite settings.



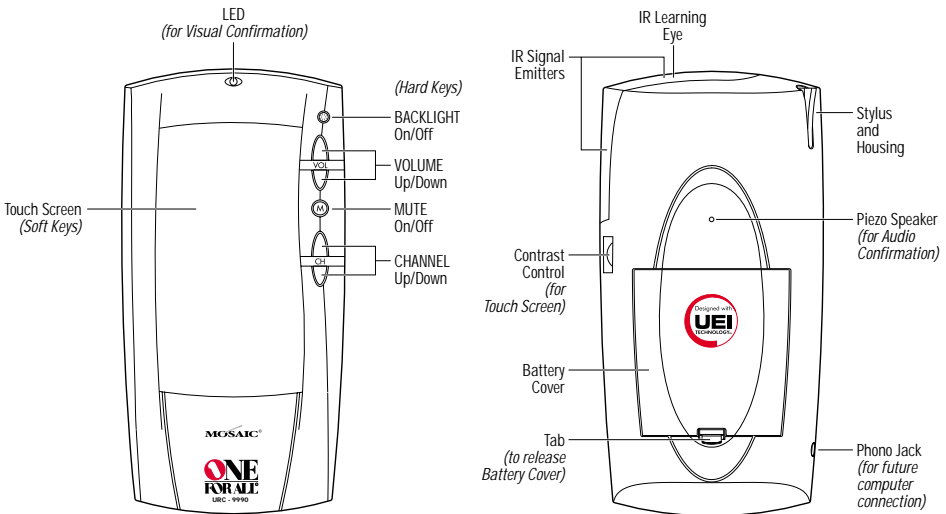
Using the touch screen

MOSAIC features a *Touch Screen* that responds to touch commands, whether you use the supplied *Stylus* or your finger tip. Each time you tap on the screen, you'll see the LED blink and hear a beep tone, which serve as visual and audio confirmation of your command.

After 20 seconds of inactivity, MOSAIC will turn off the LCD screen to conserve battery life.



NOTE: By pressing the ? key you will obtain additional information about the displayed menu.



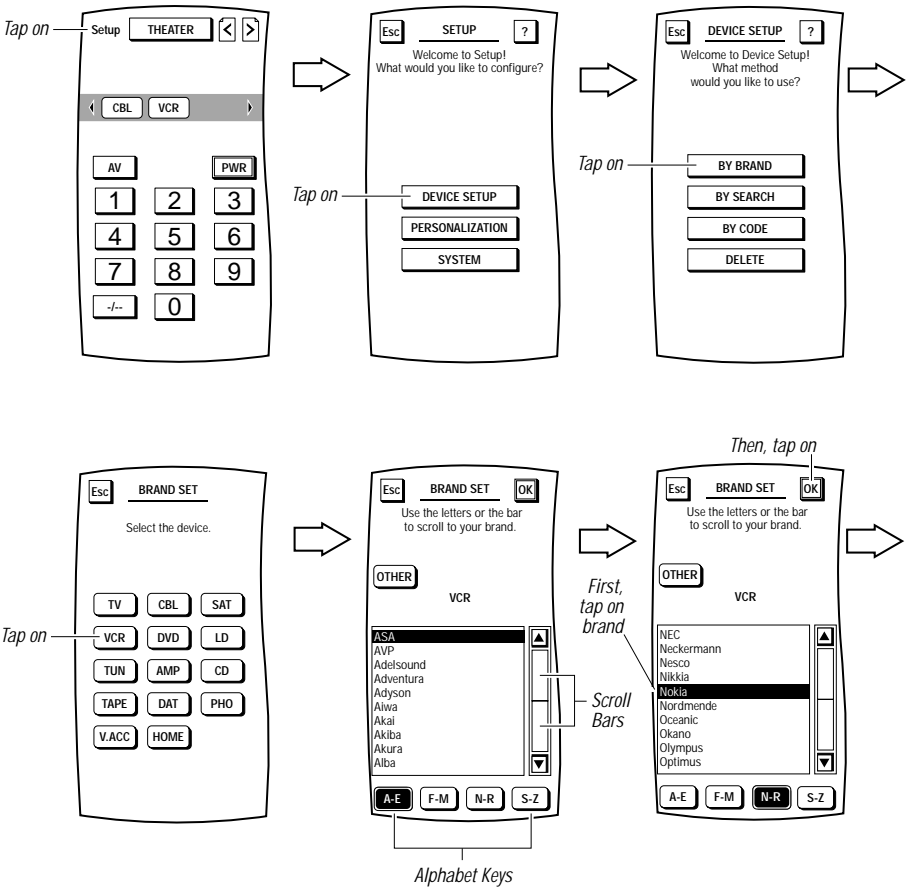
Device Setup

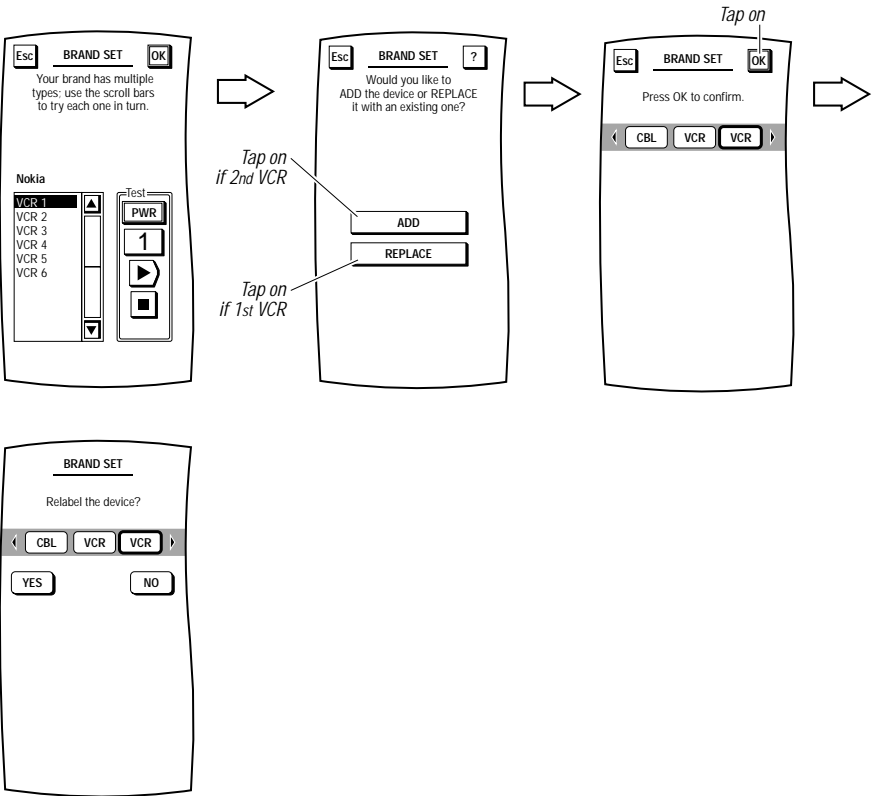
BY BRAND

The easiest way to add devices to MOSAIC is to perform a setup by manufacturer brand. With this method you select a device to add, select the brand you own, and MOSAIC automatically finds the correct manufacturer's code to correctly control the device.

Example: to Set-Up your Video Recorder (brand: Nokia):

*NOTE: To return to a previous menu, tap on the **ESC** key. To return to last-displayed Device Screen, press down on **ESC** or **MUTE** for at least 2 seconds. For help, tap the **?** key.*





- To relabel the device key, tap on the YES key and you will see the LABEL Menu (see explanation on page 25 step 6).
- To keep the label the same, tap on the NO key.

You will see a confirmation screen that says the key has been successfully programmed. To program another device, tap on the ESC key. To return to the Device Screen, press on ESC or MUTE for at least 2 seconds.

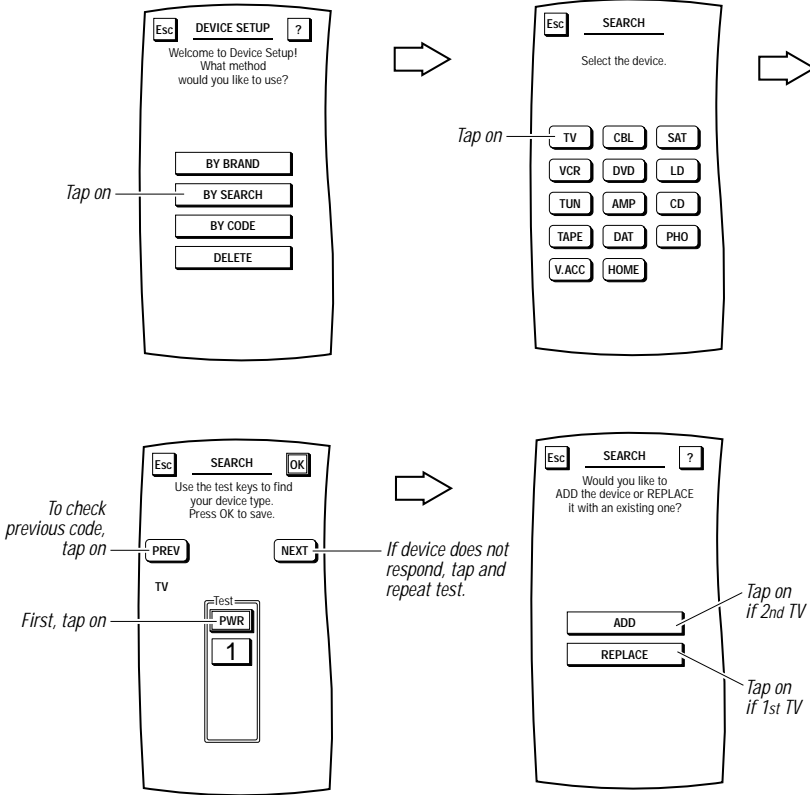
To test remote control of the newly-added device, tap on its key on the Device Selection Strip. Try using the Hard Keys to adjust volume and change channels. Try tapping on the Page Arrows to access other remote control functions and then try tapping on the soft keys on each page to test them.

NOTE: Remember to press the correct device key before operating your device. Only one device (CD, amplifier, cassette, etc.) can be assigned to a device key. If your original remote operates more than one device (for example, a receiver, CD player and cassette player in one remote), you need to set up each device separately.

SETUP BY SEARCH

As an alternative method, you can use MOSAIC's search program to find the correct manufacturer's codes to set up your entertainment devices. With this method you first select a device you want to add, then you perform a code test, advancing through one or more types, to find the one that works.

Example: to use the search method for your television:



Tap on the **OK** key to confirm your choice. MOSAIC will ask if you want to relabel the newly-added device.

- To relabel it, tap on the **YES** key and you will see the LABEL Menu (see explanation on page 25 step 6).
- To keep the label the same, tap on the **NO** key.

You will see a confirmation screen that says the key has been successfully programmed. To program another device, tap on the ESC key. To return to the Device Screen, press on ESC or MUTE for at least 2 seconds.

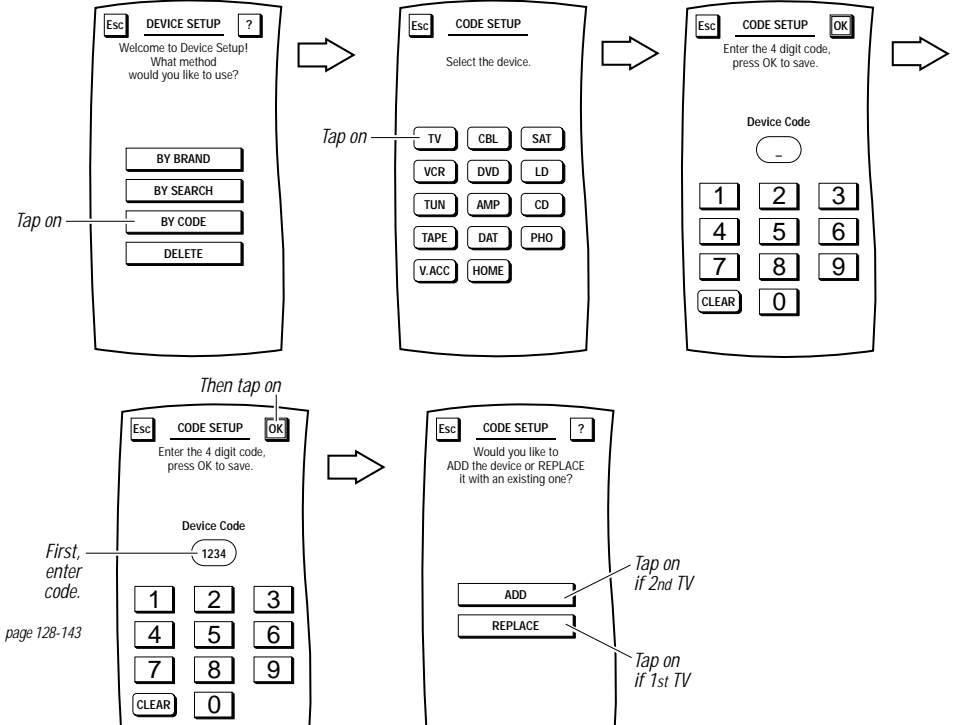
To test remote control of the newly-added device, tap on its key on the Device Selection Strip. Try using the Hard Keys to adjust volume and change channels. Try tapping on the Page Arrows to access other remote control functions and then try tapping on the soft keys on each page to test them.

SETUP BY CODE

Find the code for your device in the Set-Up Code section (starting on page 128). Codes are listed by device type and brand name. The most popular code is listed first. Make sure your device is switched on (not in standby). Newly captured Manufacturer's codes are available for customer access on our web site www.oneforall.com.

1. Tap on Setup key (upper left corner).
2. Tap on DEVICE SETUP.

NOTE: To return to a previous menu, tap on the **ESC** key. To return to last-displayed Device Screen, press down on **ESC** or **MUTE** for at least 2 seconds. For help, tap the **? key**.



3. Tap on the **OK** key to confirm your choice. MOSAIC will ask if you want to relabel the newly-added device.
 - To relabel it, tap on the **YES** key and you will see the LABEL Menu (see explanation on page 25 step 6).
 - To keep the label the same, tap on the **NO** key.

You will see a confirmation screen that says the key has been successfully programmed. To program another device, tap on the ESC key. To return to the Device Screen, press on ESC or MUTE for at least 2 seconds.

To test remote control of the newly-added device, tap on its key on the Device Selection Strip. Try using the Hard Keys to adjust volume and change channels. Try tapping on the Page Arrows to access other remote control functions and then try tapping on the soft keys on each page to test them.

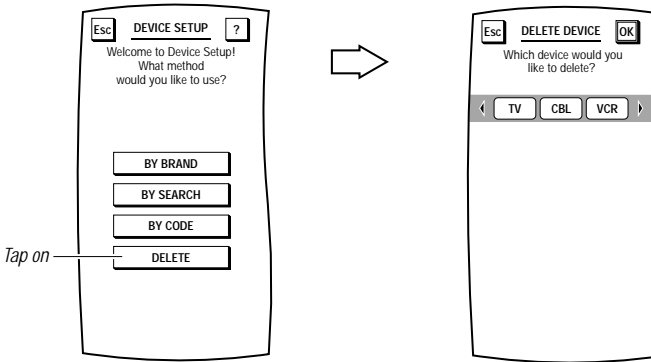
DELETING A DEVICE

If you no longer use a certain device or it has been incorrectly added to the *Device Selection Strip*, use the following procedure to delete it from MOSAIC's memory.

1. Tap on Setup key (upper left corner).
2. Tap on DEVICE SETUP.

*NOTE: To return to a previous menu, tap on the **ESC** key. To return to last-displayed Device Screen, press and hold down **ESC** for at least 2 seconds. For help, tap the **?** key.*

3. Tap on the **DELETE** key. You will see the DELETE DEVICE Menu which shows the current Device Selection Strip.



4. Using the Device Selection Strip, tap the device key you want to delete. If needed, tap the left/right scroll arrows to display other device choices. When you have selected a device, it will become highlighted as **YES** and **NO** keys appear.
- To delete the selected device, tap on the **YES** key. You will see a confirmation screen that says the key has been successfully deleted. To delete another device, tap on the **ESC** key to return to the **DELETE DEVICE** Menu, or press down on **ESC** or **MUTE** for at least 2 seconds to return to the last-displayed Device Screen.
 - To cancel deleting the selected device, tap on the **NO** key. MOSAIC will return to the Device Selection Strip with no devices selected to start the process over. If you're done, tap on the **ESC** to return to the **DEVICE SETUP** Menu, or press down on **ESC** or **MUTE** for at least 2 seconds to return to the last-displayed Device Screen.

NEW CODES

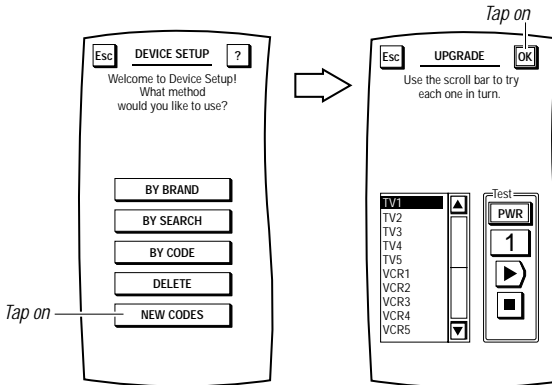
NOTE: This section only applies after you have performed a download of new device codes (see SYSTEM – UPGRADE on page 36).

NOTE: Make sure the device you want to add is turned on (not in standby).

After downloading, MOSAIC will store the new device codes in memory. An additional soft key, labelled **NEW CODES**, will appear on the DEVICE SETUP Menu which you will use to find a working code for a selected device.

1. Tap on Setup key (upper left corner).
2. Tap on DEVICE SETUP.
3. Tap on the **NEW CODES** key. You will see the UPGRADE Test Menu.

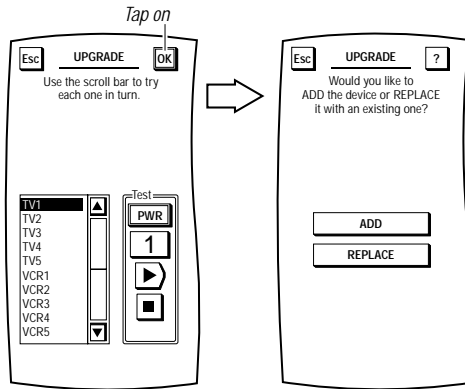
NOTE: To return to a previous menu, tap on the **ESC** key. To return to last-displayed Device Screen, press and hold down **ESC** for at least 2 seconds. For help, tap the ? key.



4. Tap on the first code in the list (e.g., **TV 1**), aim MOSAIC at the desired device (e.g., television), and tap on the **PWR** key. The device should turn off. If it does not respond, tap on the next code in the list (e.g., **TV 2**), then tap on the **PWR** key again. If the device still does not respond, repeat this process by testing each code until you find one that works.

NOTE: Depending on your download, the code list may include more than one device type.

5. To save a code that works, tap on the **OK** key. You will see the **UPGRADE ADD/REPLACE** menu that lists two choices.



- Use the **ADD** key when setting up a new device (e.g., a DVD player) that is not currently on the *Device Selection Strip* (if needed, refer to *USING THE TOUCH SCREEN* – on page 4). The remaining instructions assume you will be adding a new device.
 - Use the **REPLACE** key when replacing a device (e.g., a TV set) that is currently on the *Device Selection Strip*.
6. Tap on the **ADD** key to add the device to MOSAIC's memory. You will see the default device label being added to the *Device Selection Strip*.

*NOTE: If you tap on the **REPLACE** key instead, MOSAIC will ask you to select the device to be replaced and, after your selection, if you want to relabel it. However, if the device to be replaced has programmed keys, MOSAIC will first ask if you want to keep or clear the settings.*
 7. Tap on the **OK** key to confirm your choice. MOSAIC will ask if you want to relabel the newly-added device.
 - To relabel it, tap on the YES key and you will see the LABEL Menu (see explanation on page 25 step 6).
 - To keep the label the same, tap on the NO key.
 8. You will see a confirmation screen that says the key has been successfully programmed. To program a function of the same type, tap on the **ESC** key. To return to the *Device Screen*, press on **ESC** or **MUTE** for at least 2 seconds.
 9. To test remote control of the newly-added device, tap on its key on the *Device Selection Strip*. Try using the Hard Keys to adjust volume and change channels. Try tapping on the *Page Arrows* to access other remote control functions and then try tapping on the soft keys on each page to test them.
 10. If desired, repeat all steps to add other devices that appeared in the new codes list of step 3.

Personalization ---

MACROS

MOSAIC includes a powerful *Macro* feature that memorizes and plays back a series of key strokes at any time with the tap of one key. Up to 21 macros can be defined, each containing a maximum of 32 keystrokes. Once defined, a macro must be placed on a *Device Screen* to be used. MOSAIC allows placement of up to four “global” macro keys across the top of every *Device Screen*. Also, you may place additional macros in specific *Device Screens* using empty locations or by overriding existing key functions.

ADDING A MACRO

As an instruction aid, we'll create an example “Power On” macro that turns on the Cable Box and TV power and then tunes in a favorite channel in this exact order:

1. Select the Cable Box and power it on.
2. Add a 2-second delay.
3. On the Cable Box, select channel 28.
4. Select the TV and power it on.
6. Add a 1-second delay.
7. On the TV, select channel 3 to view the modulated signal from the Cable Box.

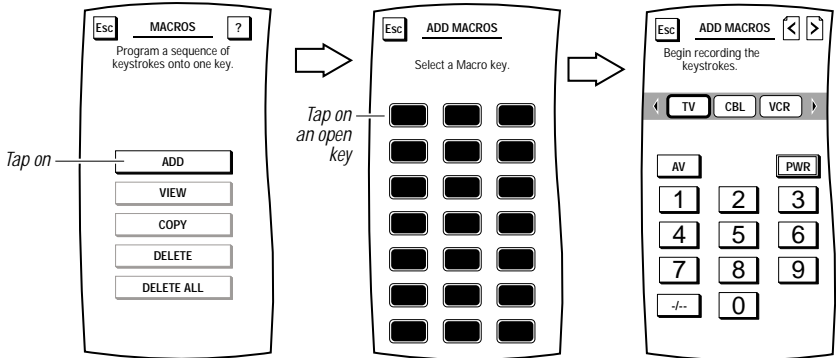
Each command counts as one macro keystroke, except when selecting a device key which counts as two. In this example, the total keystroke count is eleven.

NOTE: Adding delays allow devices to power up to their full operating state. In most cases, 1 to 2 seconds is sufficient, but MOSAIC will accept up to 8 seconds and only count it as one keystroke.

1. Tap on Setup key (upper left corner).
2. Tap on PERSONALIZATION.

*NOTE: To return to a previous menu, tap on the **ESC** key. To return to last-displayed Device Screen, press down on **ESC** or **MUTE** for at least 2 seconds. For help, tap the **? key**.*

3. Tap on the **MACROS** key. You will see the *MACROS Menu*.
4. Tap on the **ADD** key. You will see the *ADD MACROS Menu*.
5. Tap on an open **Macro** key (i.e., a macro key that is not labelled). You will see the *ADD MACROS Screen* (as shown below) which looks similar to a Device Screen.

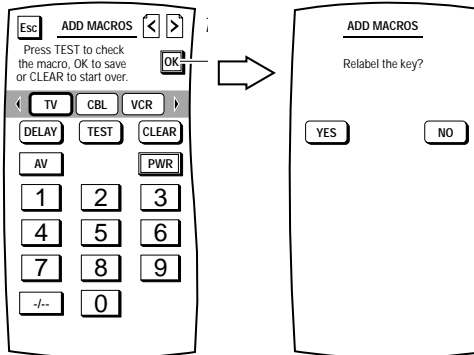


6. At this point, we'll record the example keystrokes listed on page 12. But first make sure the Cable Box and TV are turned off (in standby).
 - a. Tap on the **CBL** key on the *Device Selection Strip*.
 - b. Tap on the **PWR** key.
 - c. Tap on the **DELAY** key twice for 2-second delay.

*NOTE: Each **DELAY** keystroke is equal to 1 second.*

- d. Tap on the **2** key followed by the **8** key to enter channel 28.
- e. Tap on the **TV** key on the *Device Selection Strip*.
- f. Tap on the **PWR** key.
- g. Tap on the **DELAY** key once for 1-second delay.
- h. Tap on the **0** key followed by the **3** key to enter channel 3.
- i. Aim MOSAIC at the Cable Box/TV and tap on the **TEST** key. You should see the LED blink as commands are sent to power on the Cable Box and tune it to channel 28, followed by TV power on and tuning it to channel 3. If the macro did not work correctly, tap on the **CLEAR** key and repeat steps 6a through 6i.

- To save the macro, tap on the **OK** key. You will see the **ADD MACROS Screen** (as shown below).



- To label the saved macro, tap on the **YES** key. You will see the **ADD MACROS Label Screen**. Follow the procedure that is similar to the one starting with step 3 on page 25 to label the macro as **TV On** and tap the **OK** key when you're done.

*NOTE: If you tap on the **NO** key, the macro will be labelled using the default labeling system which labels macros in ascending numerical order (e.g., **M1**, **M2**, **M3**, etc.).*

- MOSAIC will ask you where you want to copy the macro.
 - To have it appear on all *Device Screens*, tap on the **ALL DEVICES** key. You will see a row of up to four empty keys appear which correspond to the space directly below *Device Selection Strip*. Tap on any empty key to assign it or tap on an existing one to override it. MOSAIC will display a confirmation screen.
 - To have it appear on a specific *Device Screen*, tap on the **SPECIFIC DEVICE** key. You will see the last-displayed *Device Screen*. Using the *Device Selection Strip*, tap on the desired device key. If needed, tap on left/right scroll arrows to view other device choices. The *Device Screen* will display all keys on all pages for the selected device. Tap on any empty key. MOSAIC will display a confirmation screen.

*NOTE: To return to a previous menu, tap on the **ESC** key. To return to last-displayed *Device Screen*, press down on **ESC** or **MUTE** for at least 2 seconds. For help, tap the **?** key.*

- Repeat steps 1 through 9 for each new macro you want to create.

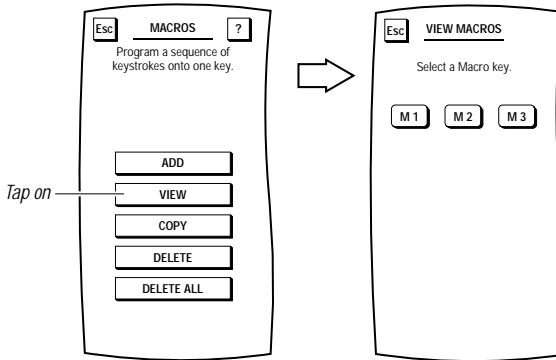
VIEWING MACROS

To see what commands are stored in a macro, perform the following steps:

1. On the *Device Screen* in the upper left corner, tap on **Setup**. You will see the main *SETUP Menu* that greets you and asks, “*What would you like to configure?*”
2. Tap on the **PERSONALIZATION** key. You will see the *PERSONALIZATION Menu*.

*NOTE: To return to a previous menu, tap on the **ESC** key. To return to last-displayed Device Screen, press down on **ESC** or **MUTE** for at least 2 seconds. For help, tap the **?** key.*

3. Tap on the **MACROS** key. You will see the main *MACROS Menu*.
4. Tap on the **VIEW** key. You will see the *VIEW MACROS Menu*.



5. Tap on any displayed **Macro** key (e.g., **M1**, **M2**, etc.). You will see the commands that make up the selected macro. To return to previous menu, tap on the **ESC** key. To return to the *Device Screen*, press down on **ESC** or **MUTE** for at least 2 seconds.

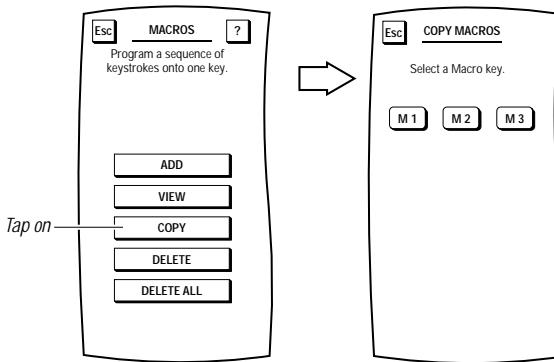
COPYING MACROS

To copy a macro, perform the following steps:

1. On the *Device Screen* in the upper left corner, tap on **Setup**. You will see the main *SETUP Menu* that greets you and asks, “*What would you like to configure?*”
2. Tap on the **PERSONALIZATION** key. You will see the *PERSONALIZATION Menu*.

*NOTE: To return to a previous menu, tap on the **ESC** key. To return to last-displayed Device Screen, press down on **ESC** or **MUTE** for at least 2 seconds. For help, tap the ? key.*

3. Tap on the **MACROS** key. You will see the main *MACROS Menu*.
4. Tap on the **COPY** key. You will see the *COPY MACROS Menu*.



5. Tap on the macro key you want to copy. MOSAIC will ask you where you want to copy the macro.
 - To have it appear on all *Device Screens*, tap on the **ALL DEVICES** key. You will see a row of up to four empty keys appear which correspond to the space directly below *Device Selection Strip*. Tap on any empty key to assign it or tap on an existing one to override it. MOSAIC will display a confirmation screen.
 - To have it appear on a specific *Device Screen*, tap on the **SPECIFIC DEVICE** key. You will see the last-displayed *Device Screen*. Using the *Device Selection Strip*, tap the desired device key. If needed, tap the left/right scroll arrows to view other device choices. The *Device Screen* will display all keys on all pages for the selected device. Tap on any empty key and MOSAIC will display a confirmation screen.

*NOTE: To return to a previous menu, tap on the **ESC** key. To return to last-displayed Device Screen, press down on **ESC** or **MUTE** for at least 2 seconds. For help, tap the ? key.*

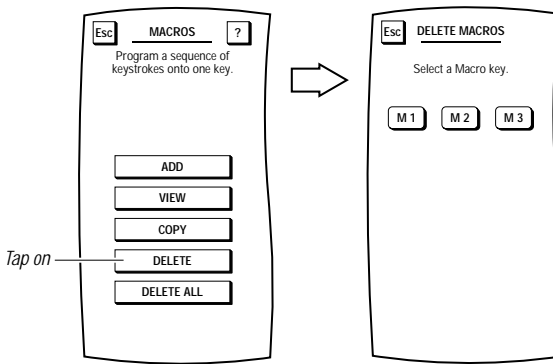
DELETING A MACRO

To delete a single macro, perform the following steps:

1. On the *Device Screen* in the upper left corner, tap on **Setup**. You will see the main *SETUP Menu* that greets you and asks, “*What would you like to configure?*”
2. Tap on the **PERSONALIZATION** key. You will see the *PERSONALIZATION Menu*.

*NOTE: To return to a previous menu, tap on the **ESC** key. To return to last-displayed Device Screen, press down on **ESC** or **MUTE** for at least 2 seconds. For help, tap the ? key.*

3. Tap on the **MACROS** key. You will see the main *MACROS Menu*.
4. Tap on the **DELETE** key. You will see the *DELETE MACROS Menu*.



5. Tap on the **Macro** key you want to delete. You will see a confirmation screen that says the macro key has been successfully deleted from all device screens and the main *MACROS Menu*.

*NOTE: Use **VIEW/DELETE** (see *PERSONALIZATION – VIEW/DELETE* on page 32) to delete macros from Device Screens but keep them intact on the main *MACROS Menu* for future copying.*

To delete another macro key, tap on the **ESC** key to return to the *DELETE MACROS Menu*, or press down on **ESC** or **MUTE** for at least 2 seconds to return to the last-displayed *Device Screen*.

DELETING ALL MACROS

To delete all macros, perform the following steps:

1. On the *Device Screen* in the upper left corner, tap on **Setup**. You will see the main *SETUP Menu* that greets you and asks, “*What would you like to configure?*”
2. Tap on the **PERSONALIZATION** key. You will see the *PERSONALIZATION Menu*.

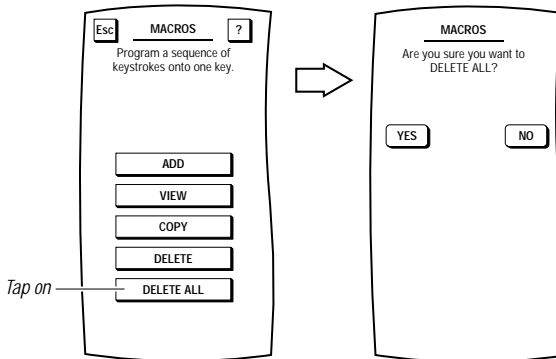
*NOTE: To return to a previous menu, tap on the **ESC** key. To return to last-displayed Device Screen, press down on **ESC** or **MUTE** for at least 2 seconds. For help, tap the ? key.*

3. Tap on the **MACROS** key. You will see the main *MACROS Menu*.
 4. Tap on the **DELETE ALL** key. MOSAIC will ask you to confirm your choice.
- To delete all macros, tap on the **YES** key. You will see a confirmation screen that says all macros have been successfully deleted on all device screens and the main *MACROS Menu*. Tap on the **ESC** key to return to the *DELETE MACROS Menu*.

*NOTE: Use **VIEW/DELETE** (see *Personalization - View/Delete* on page 32) to delete macros from Device Screens but keep them intact on the main *MACROS Menu* for future copying.*

- To cancel deletion of all macros, tap on the **NO** key. MOSAIC will return to the main *MACROS Screen*. If you want to delete a single macro, see the previous section, *Deleting A Macro* on page 17, or see *View/Delete* on page 32.

*NOTE: To return to a previous menu, tap on the **ESC** key. To return to last-displayed Device Screen, press down on **ESC** or **MUTE** for at least 2 seconds. For help, tap the ? key.*



MOVE KEY

MOSAIC also includes our patented *Key Mover* feature that allows keys to be copied from one device to another, or to a different position in the same device mode. However, there are some considerations:

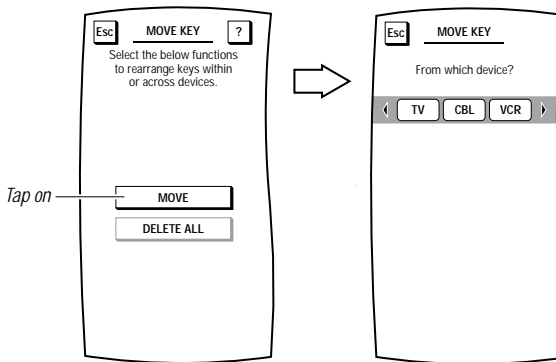
- A moved key is actually a copy of the original key. The original key cannot be deleted.
- A moved key will always be rectangular, even though the original version may be a different shape.
- A moved key retains the original label, but it can be relabelled.
- The *Key Mover* feature only works on IR function keys.

Example: we'll create an example that copies the AV key from TV Device Screen and adds it to the CBL Device Screen.

1. On the *Device Screen* in the upper left corner, tap on **Setup**. You will see the main *SETUP Menu* that greets you and asks, "What would you like to configure?"
2. Tap on the **PERSONALIZATION** key. You will see the *PERSONALIZATION Menu*.

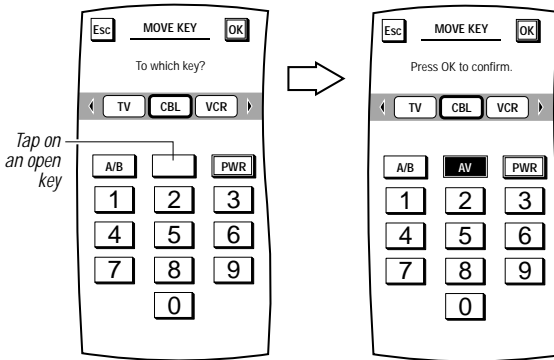
*NOTE: To return to a previous menu, tap on the **ESC** key. To return to last-displayed Device Screen, press down on **ESC** or **MUTE** for at least 2 seconds. For help, tap the ? key.*

3. Tap on the **MOVE KEY** key. You will see the *MOVE KEY Menu*.
4. Tap on the **MOVE** key. You will see the *Device Selection Strip* and **MOSAIC** asks you to choose a device from which to move a key.



5. Tap on a desired device key. For our example, tap on the TV key. **MOSAIC** will ask you to choose a key to be moved.
6. Tap on the key you want moved. If needed, tap on the Page Arrow keys to view other pages for the selected device. For our example, tap on the AV key. Again you will see the *Device Selection Strip*, but this time **MOSAIC** asks you to choose a device where the key will be moved to.
7. Tap on a desired device key. For our example, tap on the CBL key. **MOSAIC** will ask you to choose a key.

8. Tap on an empty key. If needed, tap on the Page Arrow keys to view other pages for the selected device. For our example, tap on the empty key located between the A/B and PWR keys. You will see the copied key pasted in place of the empty key.



9. To confirm your choice, tap on the OK key. To cancel the move, tap on the ESC key.
10. After confirming the move, MOSAIC will ask if you want to relabel the moved key.
- To keep the label the same, tap on the **NO** key. In our example, we'll keep the same label, **AV**.
 - To relabel the copied key, tap on the **YES** key. You will see the *MOVE KEY Label Screen*. Follow the procedure that is similar to the one starting with step 3 on page 25 to relabel the key and tap the **OK** key when you're done.
11. You will see a confirmation screen that says the key has been successfully programmed. To program a function of the same type, tap on the **ESC** key. To return to the *Device Screen*, press on **ESC** or **MUTE** for at least 2 seconds.

DELETING ALL MOVED KEYS

1. On the *Device Screen* in the upper left corner, tap on **Setup**. You will see the main *SETUP Menu* that greets you and asks, “*What would you like to configure?*”
2. Tap on the **PERSONALIZATION** key. You will see the *PERSONALIZATION Menu*.

*NOTE: To return to a previous menu, tap on the **ESC** key. To return to last-displayed Device Screen, press down on **ESC** or **MUTE** for at least 2 seconds. For help, tap the ? key.*

3. Tap on **MOVE KEY**. You will see the *MOVE KEY Menu*.
4. Tap on the **DELETE ALL** key. MOSAIC will ask you to confirm your choice.
 - To delete all moved keys, tap on the **YES** key. You will see a confirmation screen that says all moved keys have been successfully deleted. Tap on the **ESC** key to return to the *MOVE KEY Screen*.
 - To cancel deletion of all moved keys, tap on the **NO** key. MOSAIC will return to the *MOVE KEY Screen*. If you want to delete a single moved key, see *VIEW/DELETE* on page 32.

*NOTE: To return to a previous menu, tap on the **ESC** key. To return to last-displayed Device Screen, press down on **ESC** or **MUTE** for at least 2 seconds.*

LEARN

Like all sophisticated remote controls, MOSAIC includes a *Learning* feature so you can easily add a function from another remote control, assign it to a special key, label that key, and place it on the screen of your choice.

However, there are some considerations:

- Learning is allowed only for device function keys, not system keys.
- A learned key can replace an existing pre-defined key or a blank key.
- A learned key can be learned onto a soft or hard key.

NOTE: Although a learned key can be learned onto a hard key, it will interfere with the original function of that key. Only make this choice when a hard key is not being used by a device (e.g., VOL keys for a CD Changer).

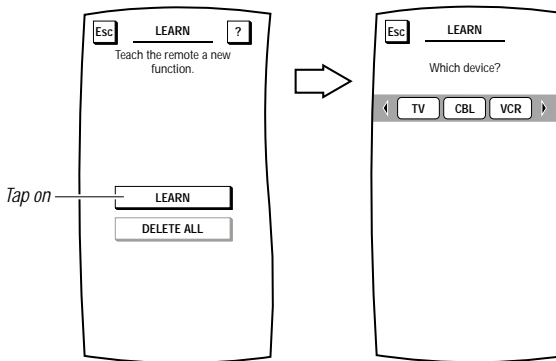
- A learned key will always be rectangular, even though the original version may be a different shape.
- If desired, a learned key can be relabelled.

LEARNING A FUNCTION

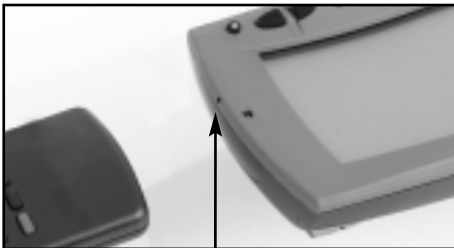
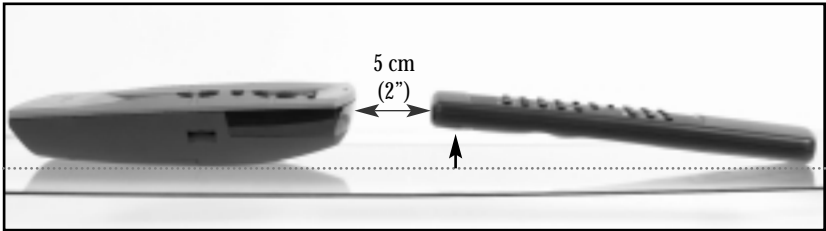
1. On the *Device Screen* in the upper left corner, tap on **Setup**. You will see the main *SETUP Menu* that greets you and asks, “What would you like to configure?”.
2. Tap on the **PERSONALIZATION** key. You will see the *PERSONALIZATION Menu*.

NOTE: To return to a previous menu, tap on the ESC key. To return to last-displayed Device Screen, press down on ESC or MUTE for at least 2 seconds. For help, tap the ? key.

3. Tap on the **LEARN** key. You will see the *LEARN Menu*.
4. Tap on the **LEARN** key again. You will see the *Device Selection Strip* and MOSAIC asks you to choose a device that will be taught.



5. Tap on a desired device key. You will see its *Device Screen* and MOSAIC asks you to select a function key that will be learned onto. If needed, tap on the **Page Arrow** keys to view other pages for the selected device.
6. Tap on a desired function key – it can be pre-defined or blank. A **LEARN** key will appear and MOSAIC will ask you to place your original remote control, head-to-head, within 5 cm (2 inches) of MOSAIC, as shown below.



NOTE: Please make sure to aim the your original remote to the arrow indicated on the front of your MOSAIC.

7. Tap on the **LEARN** key. MOSAIC will turn on its LED and display a *Learning* message. On the original remote control, press and hold down the key you want learned. When the LED turns off, a confirmation message will appear stating that the IR codes from your original remote control were successfully captured.

NOTE: If you hear a dual-tone audio beep, MOSAIC will display an error message stating that the IR codes were not captured. MOSAIC will ask you to repeat the procedure again.

8. Tap on the **OK** key to accept the capture. MOSAIC will ask you if want to relabel the function key (as selected in step 6).
 - To relabel the function key, tap on the **YES** key. You will see the *LEARN Label Screen*. Follow the procedure that is similar to the one starting with step 3 on page 25 to relabel the key and tap the **OK** key when you're done.
 - To keep the label the same, tap on the **NO** key.
9. You will see a confirmation screen that says the key has been successfully programmed. To program a function of the same type, tap on the **ESC** key. To return to the *Device Screen*, press on **ESC** or **MUTE** for at least 2 seconds.

NOTE: Be sure to test the learned function to see if it works. If not, repeat the procedure.

DELETING ALL LEARNED FUNCTIONS

1. Tap on Setup key (upper left corner).
2. Tap on PERSONALIZATION. You will see the PERSONALIZATION Menu.

*NOTE: To return to a previous menu, tap on the **ESC** key. To return to last-displayed Device Screen, press down on **ESC** or **MUTE** for at least 2 seconds. For help, tap the ? key.*

3. Tap on the **LEARN** key. You will see the *LEARN Menu*.
4. Tap on the **DELETE ALL** key. MOSAIC will ask you to confirm your choice.
 - To delete all learned keys, tap on the **YES** key. You will see a confirmation screen that says all learned keys have been successfully deleted. Tap on the **ESC** key to return to the *LEARN Screen*.
 - To cancel deletion of all learned functions, tap on the **NO** key. MOSAIC will return to the *LEARN Screen*. If you want to delete a single learned key, see *VIEW/DELETE* on page 32.

*NOTE: To return to a previous menu, tap on the **ESC** key. To return to last-displayed Device Screen, press down on **ESC** or **MUTE** for at least 2 seconds.*

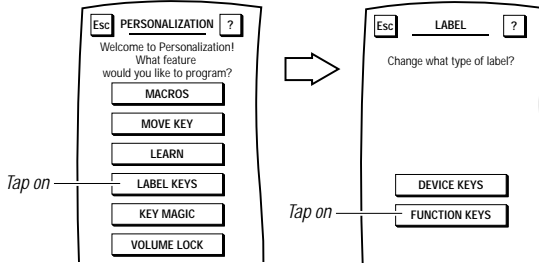
LABEL KEYS

LABELLING DEVICE KEYS

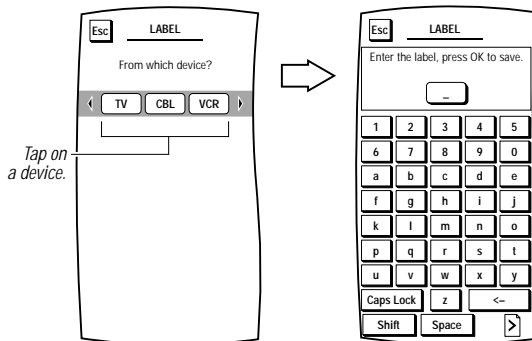
1. On the *Device Screen* in the upper left corner, tap **Setup**. You will see the main *SETUP Menu* that greets you and asks, “What would you like to configure?”
2. Tap on the **PERSONALIZATION** key. You will see the *PERSONALIZATION Menu*.

NOTE: To return to a previous menu, tap on the ESC key. To return to last-displayed Device Screen, press down on ESC or MUTE for at least 2 seconds. For help, tap the ? key.

3. Tap on the **LABEL KEYS** key. You will see the *LABEL Menu*.



4. Tap on the **DEVICE KEYS** key. You will see the *Device Selection Strip*, and MOSAIC asks you to choose a device you want to relabel.
5. Tap on a desired device key. You will see the *LABEL Screen*, as shown on the next page.



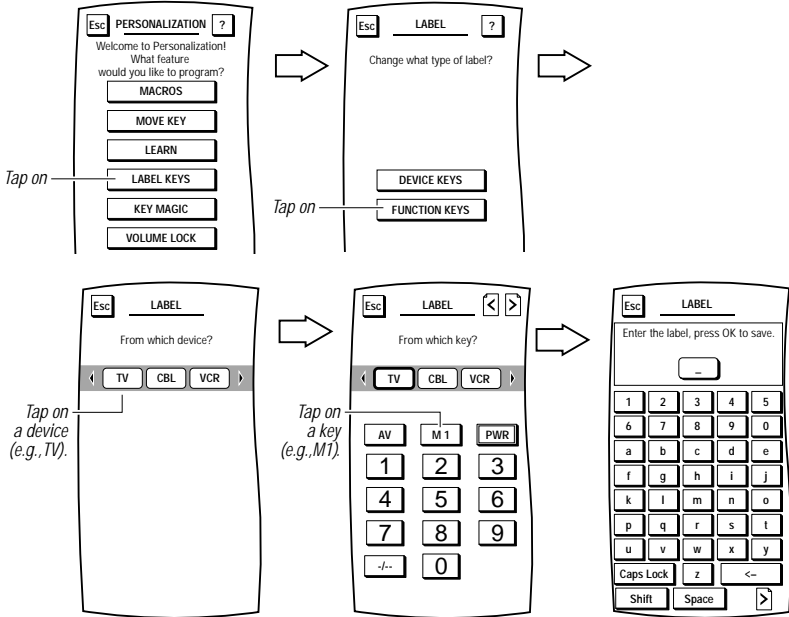
6. Enter a desired label using the alphanumeric keypad. Depending on the characters being entered, the label can be as short as one or as long as eight characters.
 - For uppercase letters, tap on the **SHIFT** or **CAPS LOCK** key.
 - To access the total of four pages of symbols, tap on the **Page Arrow** key.
 - Tap on the **SPACE** key to enter a space.
 - To reenter a character, tap on the **<-** key.
7. To save your device label, tap on the **OK** key. MOSAIC will show a confirmation message saying that the label was successfully programmed.

NOTE: To return to a previous Menu, tap on the ESC key. To return to last-displayed Device Screen, press down on ESC or MUTE for at least 2 seconds.

LABELLING FUNCTION KEYS

1. On the *Device Screen* in the upper left corner, tap on **Setup**. You will see the main *SETUP Menu* that greets you and asks, “What would you like to configure?”
2. Tap on the **PERSONALIZATION** key. You will see the *PERSONALIZATION Menu*.

NOTE: To return to a previous menu, tap on the ESC key. To return to last-displayed Device Screen, press down on ESC or MUTE for at least 2 seconds. For help, tap the ? key.



3. Tap on the **LABEL KEYS** key. You will see the *LABEL Menu*.
4. Tap on the **FUNCTION KEYS** key. You will see the *Device Selection Strip*, and MOSAIC asks you to choose a device that contains the function key(s) you want to relabel.
5. Tap on a desired device key. You will see its *Device Screen*.
6. Tap on a desired function key. You will see the *LABEL Screen*.
7. Enter a desired label using the alphanumeric keypad. Depending on the characters being entered, the label can be as short as one or as long as eight characters.
 - For uppercase letters, tap on the **SHIFT** or **CAPS LOCK** key.
 - To access the total of four pages of symbols, tap on the **Page Arrow** key.
 - Tap on the **SPACE** key to enter a space.
 - To reenter a character, tap on the <- key.
8. To save your function label, tap on the **OK** key. MOSAIC will show a confirmation message saying that the label was successfully programmed.

NOTE: To return to a previous Menu, tap on the ESC key. To return to last-displayed Device Screen, press down on ESC or MUTE for at least 2 seconds.

KEY MAGIC

MOSAIC provides users with an alternative way to add functional codes to keys through our patented *Key Magic* feature. Although MOSAIC includes the world's largest infrared code library, you may find an advanced function that is not available on MOSAIC, yet still exists on your original remote control. Using *Key Magic* and our Web site (see *SYSTEM – ABOUT* on page 42), you can obtain a code that you can use to add the advanced feature to the device screen.

However, there are some considerations:

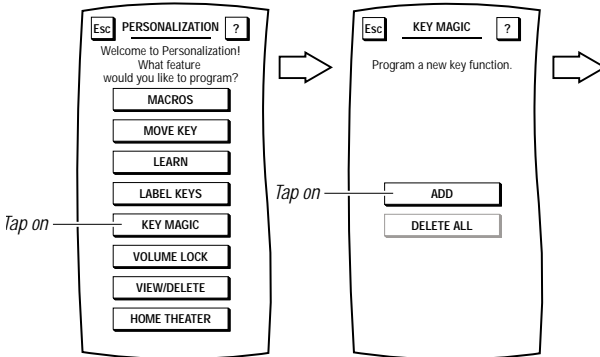
- Use the *Key Magic* feature if you don't have access to the original remote control. Otherwise, use *Learning* (see *LEARN* on page 22) and the original remote control to learn the missing function onto MOSAIC.
- A *Key Magic* key will always be rectangular even though the original version may be a different shape.
- A *Key Magic* key retains its original *Key Magic* number, but it can be relabelled.
- The *Key Magic* feature only works on IR function keys.

ADDING A KEY MAGIC FUNCTION

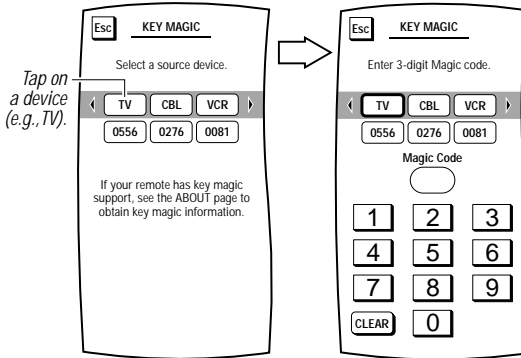
1. On the *Device Screen* in the upper left corner, tap on **Setup**. You will see the main *SETUP Menu* that greets you and asks, "What would you like to configure?"
2. Tap on the **PERSONALIZATION** key. You will see the *PERSONALIZATION Menu*.

*NOTE: To return to a previous menu, tap on the **ESC** key. To return to last-displayed Device Screen, press down on **ESC** or **MUTE** for at least 2 seconds. For help, tap the ? key.*

3. Tap on the **KEY MAGIC** key. You will see the *KEY MAGIC Menu*, as shown below.



4. Tap on the **ADD** key. You will see the *KEY MAGIC Device Selection Strip*.
5. Tap on a desired device. MOSAIC will ask you to enter the 3-digit Magic Code, as shown on the next page.
6. Make a note of the 4-digit code listed under the selected device and call our customer support group (see page 43). You will be supplied with the correct **3-digit** code for the function you want to add.



7. Using the keypad, enter the 3-digit code. MOSAIC will ask you to test the *Key Magic* function. Aim MOSAIC at the selected device and tap on the **TEST** key.
8. If the device responds correctly, tap on the **OK** key. You will see the *KEY MAGIC Device Selection Strip* and MOSAIC will ask on which device you want to store the new function.
9. Tap on a desired device. You will see its *Device Screen* and MOSAIC will ask on which key you want to store the new function.
10. To assign the function, tap on any desired key. To accept the change, tap on the **OK** key. MOSAIC will ask if you want to relabel the function key.
 - To relabel it, tap on the YES key and you will see the LABEL Menu (see explanation on page 25 step 6).
 - To keep the label the same, tap on the NO key.
11. You will see a confirmation screen that says the key has been successfully programmed. To program a function of the same type, tap on the **ESC** key. To return to the *Device Screen*, press on **ESC** or **MUTE** for at least 2 seconds.

DELETING ALL KEY MAGIC FUNCTIONS

1. On the *Device Screen* in the upper left corner, tap on **Setup**. You will see the main *SETUP Menu* that greets you and asks, “*What would you like to configure?*”
2. Tap on the **PERSONALIZATION** key. You will see the *PERSONALIZATION Menu*.

*NOTE: To return to a previous menu, tap on the **ESC** key. To return to last-displayed Device Screen, press down on **ESC** or **MUTE** for at least 2 seconds. For help, tap the ? key.*

3. Tap on the **KEY MAGIC** key.
4. Tap on the **DELETE ALL** key. MOSAIC will ask you to confirm your choice.
 - To delete all Key Magic keys, tap on the **YES** key. You will see a confirmation screen that says all Key Magic keys have been successfully deleted. Tap on the **ESC** key to return to the *KEY MAGIC Screen*.
 - To cancel deletion of all Key Magic keys, tap on the **NO** key. MOSAIC will return to the *KEY MAGIC Screen*. If you want to delete a single Key Magic key, see *VIEW/DELETE* on page 32.

*NOTE: To return to a previous menu, tap on the **ESC** key. To return to last-displayed Device Screen, press down on **ESC** or **MUTE** for at least 2 seconds.*

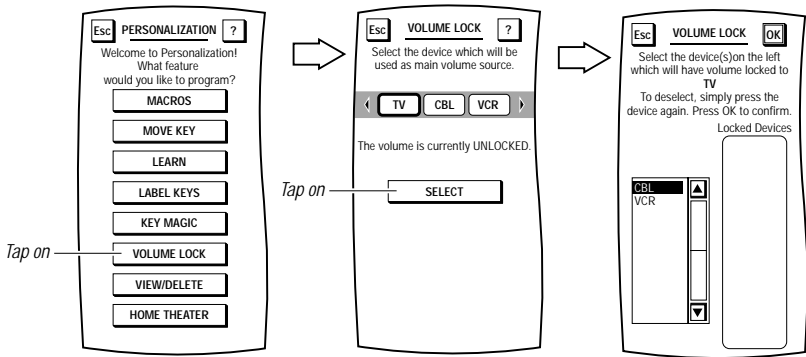
VOLUME LOCK

In its default state, MOSAIC allows each device to control its own volume. However, using our *Volume Lock* feature, you can set MOSAIC to conveniently control volume of one or more devices (e.g., Cable Box and VCR) through a single device (e.g., TV).

1. On the *Device Screen* in the upper left corner, tap on **Setup**. You will see the main *SETUP Menu* that greets you and asks, "What would you like to configure?"
2. Tap on the **PERSONALIZATION** key. You will see the *PERSONALIZATION Menu*.

NOTE: To return to a previous menu, tap on the ESC key. To return to last-displayed Device Screen, press down on ESC or MUTE for at least 2 seconds. For help, tap the ? key.

3. Tap on the **VOLUME LOCK** key. You will see the *VOLUME LOCK Menu*.



4. On the *Device Selection Strip*, tap on the device you want as main volume source (e.g., **TV**) for a group of related devices (e.g., **VCR** and **CBL**). You will see a message stating that the TV volume is currently unlocked.

NOTE: If the TV volume is locked, tap on another device or unlock the selected device (see "Unlocking the Volume" on page 31).

5. Tap on the **SELECT** key. You will see the *Device VOLUME LOCK Menu*.
6. In the left column, tap on a device you want locked (e.g., **VCR**) to the main volume source (e.g., **TV**) originally selected in step 4. You will see the device (e.g., **VCR**) being added to the *Locked Devices* list on the right.

NOTE: To remove a device from the Locked Devices list, tap again on the device in the left column.

7. Repeat step 6 for each additional device (e.g., **CBL**) you want locked to the main volume source. If needed, use the scroll up/down arrows in the left column to view additional devices.
8. To save your selections, tap on the **OK** key. MOSAIC will show a confirmation message saying that your *Volume Lock* function was successfully programmed.

NOTE: To return to the previous menu, tap on the ESC key. To return to last-displayed Device Screen, press down on ESC or MUTE for at least 2 seconds.

UNLOCKING THE VOLUME

1. On the *Device Screen* in the upper left corner, tap **Setup**. You will see the main *SETUP Menu* that greets you and asks, “*What would you like to configure?*”
2. Tap on the **PERSONALIZATION** key. You will see the *PERSONALIZATION Menu*.

*NOTE: To return to a previous menu, tap on the **ESC** key. To return to last-displayed Device Screen, press down on **ESC** or **MUTE** for at least 2 seconds. For help, tap the ? key.*

3. Tap on the **VOLUME LOCK** key. You will see the *VOLUME LOCK Menu*.
4. Tap on the **SELECT** key. You will see the *Device VOLUME LOCK Menu*.
5. In the left column, tap on a device you want unlocked from the main volume source. You will see the device being removed from the *Locked Devices* list on the right.
6. Repeat step 5 for each additional device you want unlocked from the main volume source. If needed, use the scroll up/down arrows in the left column to view additional devices.
7. To save your selections, tap on the **OK** key. MOSAIC will show a confirmation message saying that your *Volume Lock* function was successfully programmed.

*NOTE: To return to the previous menu, tap on the **ESC** key. To return to last-displayed Device Screen, press down on **ESC** or **MUTE** for at least 2 seconds.*

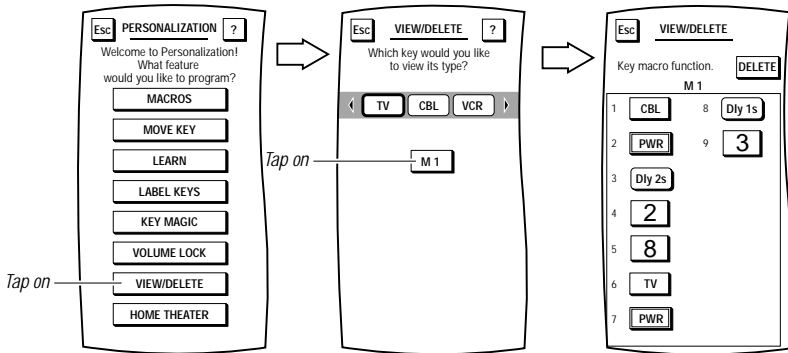
VIEW/DELETE

To help you review what personalized changes have been made, MOSAIC includes a program that allows you to view the functions by device and to selectively delete any one.

1. On the *Device Screen* in the upper left corner, tap on **Setup**. You will see the main *SETUP Menu* that greets you and asks, “What would you like to configure?”
2. Tap on the **PERSONALIZATION** key. You will see the *PERSONALIZATION Menu*.

*NOTE: To return to a previous menu, tap on the **ESC** key. To return to last-displayed Device Screen, press down on **ESC** or **MUTE** for at least 2 seconds. For help, tap the ? key.*

3. Tap on the **VIEW/DELETE** key. You will see the *VIEW/DELETE Device Selection Strip*.



4. Tap on a desired device. You will see all personalized functions for the device. In the illustration above, **M1** is an example macro key that was created in the section, *Adding A Macro*, starting on page 12.
 5. The *View/Delete* program will list all *Macros* and *Moved, Learned, and Key Magic* keys. Tap on any key to view a description. In the following illustration, tapping on **M1** shows the recorded keys used to create the example macro key in *Adding A Macro*, starting on page 12.
- To delete a personalized function, tap on the **DELETE** key. MOSAIC will delete it and show a confirmation message saying that you have successfully programmed your personalization function.
 - To keep a personalized function, tap on the **ESC** or **MUTE** key. MOSAIC will return to the *View/Delete Screen*.

HOME THEATER

Although you may think Home Theater is an independent device mode, it is actually a programmed composite of the most-frequently-used home-theater functions taken from the devices configured in MOSAIC. This composite screen is accessed via a dedicated soft key, labelled **THEATER**, at the top of all *Device Screens*. When it is tapped, MOSAIC will display your selected functions including any related macros.

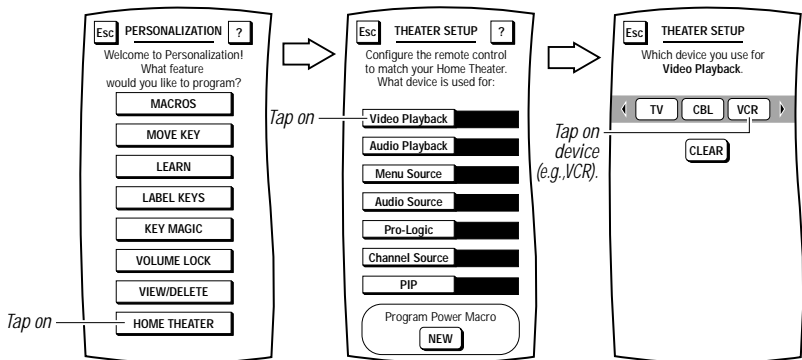
Home Theater also allows you to program a separate “Power On” macro that will power on all your favorite home theater devices with the tap of a single key.

PROGRAMMING HOME THEATER DEVICES

1. On the *Device Screen* in the upper left corner, tap on **Setup**. You will see the main *SETUP Menu* that greets you and asks, “What would you like to configure?”
2. Tap on the **PERSONALIZATION** key. You will see the *PERSONALIZATION Menu*.

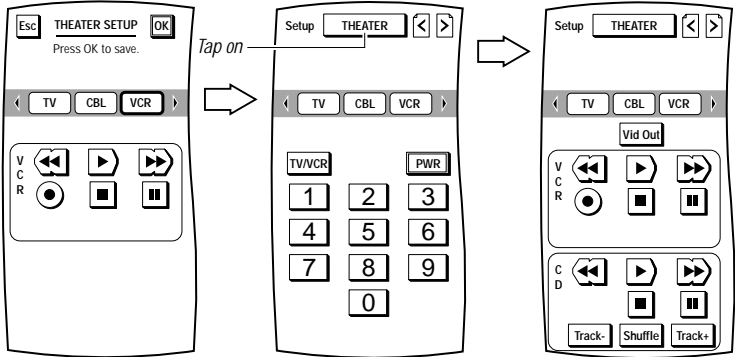
*NOTE: To return to a previous menu, tap on the **ESC** key. To return to last-displayed Device Screen, press down on **ESC** or **MUTE** for at least 2 seconds. For help, tap the ? key.*

3. Tap on the **HOME THEATER** key. You will see seven device categories listed in the *THEATER SETUP Menu*.



4. Tap on the **Video Playback** key. You will see the *THEATER SETUP Device Selection Strip*, as shown on the next page.
5. Tap on the device you want to set up as your video playback device (e.g., **VCR**). If you select a device that has a transport (e.g., **VCR**), necessary control keys will be added to the display. To make a different selection, tap on the **ESC** key and repeat this step.
6. To save your selection, tap on the **OK** key. MOSAIC will return to the *Theater Setup Screen*.
7. Repeat steps 4 through 6 for all remaining device categories. When you're finished, continue onto the next section to program a Home Theater “Power On” macro.

*NOTE: To return to a previous menu, tap on the **ESC** key. To return to last-displayed Device Screen, press down on **ESC** or **MUTE** for at least 2 seconds.*



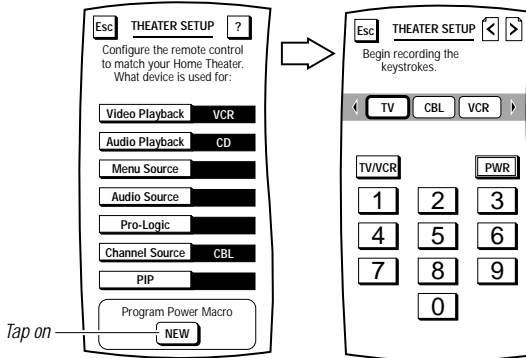
- If you want to test Home Theater, press down on **ESC** or **MUTE** for at 2 seconds to return to the last-displayed *Device Screen*. Then tap on the **THEATER** Key to see the composite screen (see example).

NOTE: Depending on the devices you program, the Home Theater composite screen on your MOSAIC may look different than the one shown in the example above.

PROGRAMMING THE HOME THEATER POWER MACRO

- If necessary, perform steps 1 through 3 of the previous section (*Programming Home Theater Devices* on page 33) to view the *Theater Setup Menu*.
- In the *Program Power Macro sub-menu*, tap on the **NEW** key. You will see the *THEATER SETUP Device Selection Strip*.

NOTE: Tapping on the NEW key will also override any previously-programmed Power Macro.

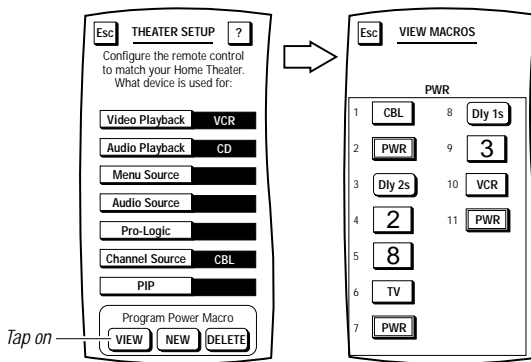


- Using a procedure similar to the one described in *Adding A Macro* (starting on page 12), tap on successive devices and their functions to program the macro.
- After you have programmed the macro, aim MOSAIC at your Home Theater system and tap on the **TEST** key. If the devices respond incorrectly, tap on the **CLEAR** key and repeat steps 3 and 4.

5. If the devices do respond correctly, then tap the **OK** key to save the macro. MOSAIC will ask you if you want to relabel the macro.
 - To relabel the macro, tap on the **YES** key. You will see the *THEATER SETUP Label Screen*. Follow the procedure that is similar to the one starting with step 3 on page 25 to relabel the macro and tap the **OK** key when you're done.
 - To keep the macro labelled as **PWR**, tap on the **NO** key.
6. MOSAIC will return to the *THEATER SETUP Menu*. To return to the *Personalization Menu*, tap on the **ESC** key. To return to the *Device Screen*, press on **ESC** or **MUTE** for at least 2 seconds.

VIEWING THE HOME THEATER POWER MACRO

1. If necessary, perform steps 1 through 3 of *Programming Home Theater Devices* (on page 33) to view the *Theater Setup Menu*.
2. In the *Program Power Macro sub-menu*, tap on the **VIEW** key. You will see the *VIEW MACROS Menu* which will display the contents of the current Power Macro, as shown in the below example.
3. To return to the *Previous Menu*, tap on the **ESC** key. To return to the *Device Screen*, press on **ESC** or **MUTE** for at least 2 seconds.



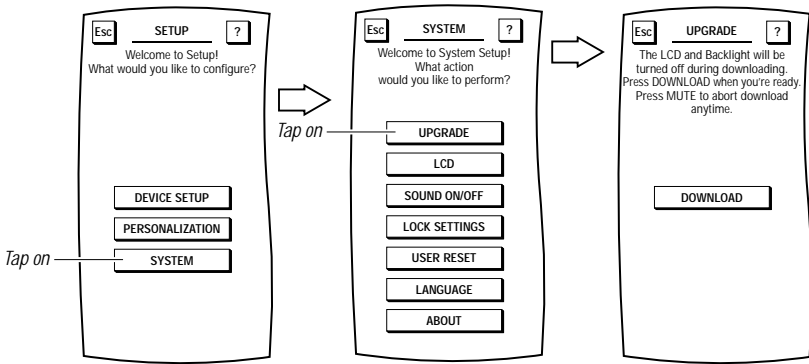
DELETING THE HOME THEATER POWER MACRO

1. If necessary, perform steps 1 through 3 of *Programming Home Theater Devices* (on page 33) to view the *Theater Setup Menu*.
2. In the *Program Power Macro sub-menu*, tap on the **DELETE** key. MOSAIC will clear the current Power Macro and display a **NEW** key to create a new macro.

System

UPGRADE

Although MOSAIC includes the world's largest infrared code library (which is compatible with virtually every infrared device being made), there may come a time when MOSAIC will require an upgrade, especially when you purchase a new device. Fortunately, MOSAIC includes electro-magnetic coupling technology that allows downloading by modem for an "in home" consumer upgrade using your PC speakers or telephone. For help upgrading your MOSAIC: <http://www.oneforall.com>.



LCD

After MOSAIC has been used a while, a soft key may no longer produce a response when you tap inside a key's boundary, yet it still works when you tap outside it. To compensate for this drift, MOSAIC includes a utility program that you can use to align the LCD back to factory specifications.

1. On the *Device Screen* in the upper left corner, tap on **Setup**. You will see the main *SETUP Menu* that greets you and asks, "What would you like to configure?"

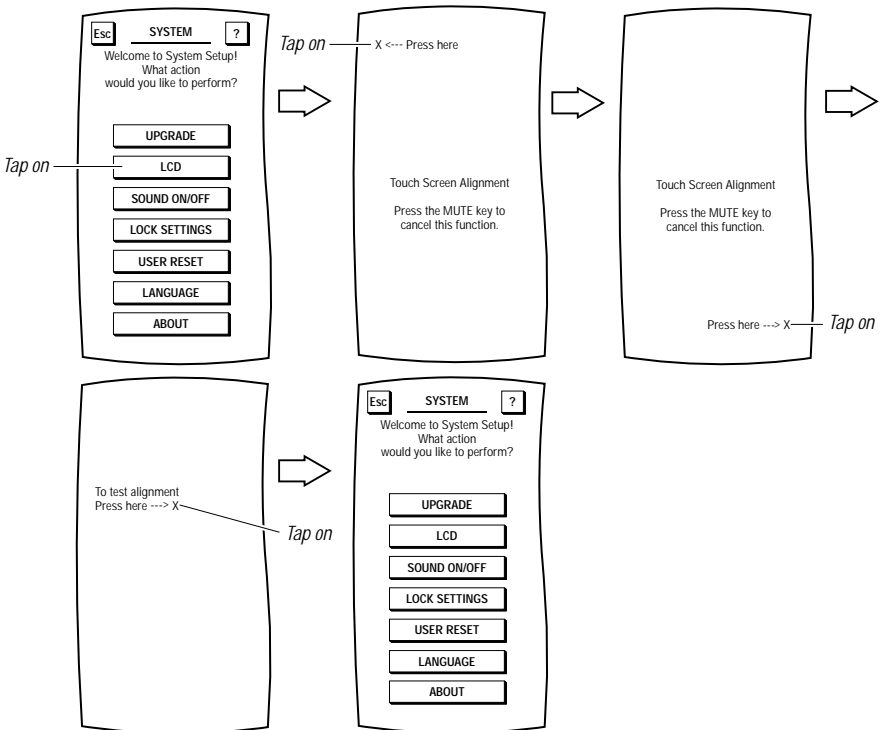
NOTE: If the LCD is so misaligned, if by tapping on Setup you do not see the main SETUP Menu, skip steps 1 through 3 and instead press the CH-, MUTE, and VOL + hard keys, all at the same time. This will cause MOSAIC to go directly to the LCD Alignment Menu. Then start with step 4 on the next page.

2. Tap on the SYSTEM key. You will see the SYSTEM Menu.

NOTE: To return to a previous menu, tap on the ESC key. To return to last-displayed Device Screen, press down on ESC or MUTE for at least 2 seconds. For help, tap the ? key.

3. Tap on the LCD key. You will see the LCD Alignment Menu. Following the instructions, tap on the X on each of the three screens shown below. When the procedure is complete, the LCD will be aligned and MOSAIC will return to the *System Menu*.

NOTE: To cancel the procedure at anytime, press the MUTE key.

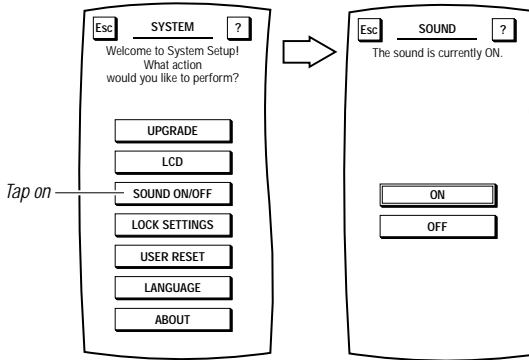


SOUND ON/OFF

MOSAIC is set at the factory to emit a beep and blink the LED each time you tap a key. To turn the beep sound off (or back on), perform the following procedure:

1. On the *Device Screen* in the upper left corner, tap on **Setup**. You will see the main *SETUP Menu* that greets you and asks, “What would you like to configure?”
2. Tap on the **SYSTEM** key. You will see the *SYSTEM Menu*.

NOTE: To return to a previous menu, tap on the ESC key. To return to last-displayed Device Screen, press down on ESC or MUTE for at least 2 seconds. For help, tap the ? key.



3. Tap on the **SOUND ON/OFF** key. You will see the *SOUND Menu* with the current setting denoted by a thicker outline.
- To turn off the beep sound, tap on the **OFF** key. MOSAIC will turn off the beep sound and return to the *System Menu*.
 - To turn on the beep sound, tap on the **ON** key. MOSAIC will turn on the beep sound and return to the *System Menu*.

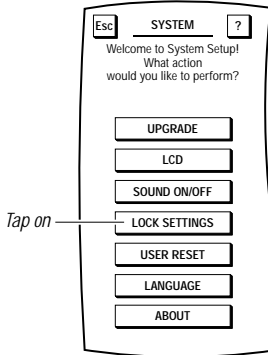
NOTE: As an additional low-battery warning, MOSAIC will emit a beep sound even if the sound is turned off (see page 3).

LOCK SETTINGS

MOSAIC is set at the factory with settings unlocked. After setting up MOSAIC, we recommend locking the new settings to keep them from being inadvertently erased or changed.

1. On the *Device Screen* in the upper left corner, tap on **Setup**. You will see the main *SETUP Menu* that greets you and asks, “What would you like to configure?”
2. Tap on the **SYSTEM** key. You will see the *SYSTEM Menu*.

*NOTE: To return to a previous menu, tap on the **ESC** key. To return to last-displayed Device Screen, press down on **ESC** or **MUTE** for at least 2 seconds. For help, tap the ? key.*



3. Tap on the **LOCK SETTINGS** key. You will see the *LOCK SETTINGS Menu* with the current setting denoted by a thicker outline.
- To lock the settings, tap on the **LOCK** key. MOSAIC will lock the settings and return to the last-displayed *Device Screen*.
 - To unlock the settings, tap on the **UNLOCK** key. MOSAIC will unlock the settings and return to the *SYSTEM Menu*.

USER RESET

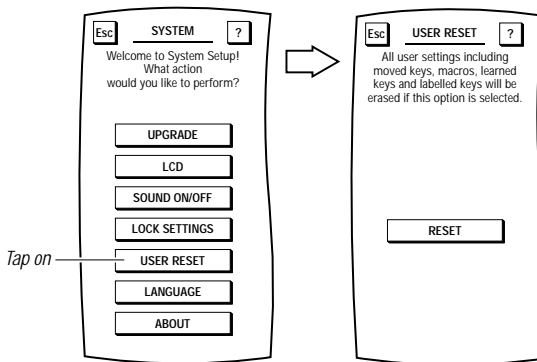
If you have updated your entertainment devices or want to completely start over, MOSAIC offers a user reset function so you can clear settings using a single command.

IMPORTANT: *User Reset does not affect downloaded codes or Device Setup settings. To reset only all user settings including Macros, Moved Keys, Learned Keys, Labelled Keys, and Key Magic functions, as well as all settings for Home Theater, Sound On/Off, Volume Lock, and Lock to their original default values, perform the following steps:*

1. On the *Device Screen* in the upper left corner, tap on **Setup**. You will see the main *SETUP Menu* that greets you and asks, “What would you like to configure?”
2. Tap on the **SYSTEM** key. You will see the *SYSTEM Menu*.

NOTE: To return to a previous menu, tap on the **ESC** key. To return to last-displayed *Device Screen*, press down on **ESC** or **MUTE** for at least 2 seconds. For help, tap the **?** key.

3. Tap on the **USER RESET** key. You will see the *USER RESET Menu*.



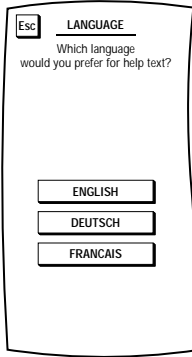
4. To erase all user settings, tap on the **RESET** key. You will hear a beep as MOSAIC clears all settings. After a few seconds, MOSAIC will show a confirmation message saying that you have successfully programmed your personalization function.

NOTE: To return to a previous Menu, tap on the **ESC** key. To return to last-displayed *Device Screen*, press down on **ESC** or **MUTE** for at least 2 seconds.

LANGUAGE

The "Help text" (*? key*) can be displayed in three languages.

1. *Tap on the **Setup** key.*
2. *Tap on **SYSTEM**.*
3. *Tap on **LANGUAGE**.*



4. *Tap on the language that you wish to select for the "help text".*

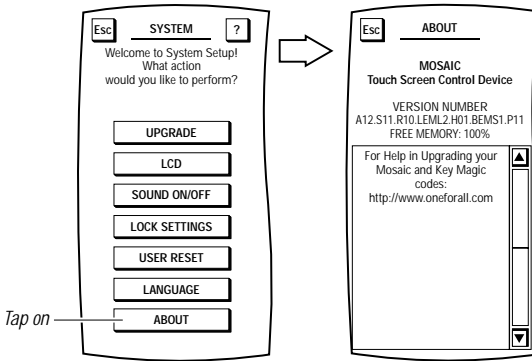
ABOUT

The *About Screen* lists MOSAIC's software version, the amount of free memory, and contact information for additional help.

1. On the *Device Screen* in the upper left corner, tap on **Setup**. You will see the main *SETUP Menu* that greets you and asks, "What would you like to configure?"
2. Tap on the **SYSTEM** key. You will see the *SYSTEM Menu*.

*NOTE: To return to a previous menu, tap on the **ESC** key. To return to last-displayed Device Screen, press down on **ESC** or **MUTE** for at least 2 seconds. For System help, tap the ? key.*

3. Tap on the **ABOUT** key. You will see the *ABOUT Menu*.



Customer Service ---

If you still have questions about the operation of your One For All MOSAIC universal remote and you could not find the answer(s) in the manual, you may want to contact the customer service department for assistance.

You may care to visit our Internet-site: **www.oneforall.com**

- 24 hours access
- page for Frequently Asked Questions
- no waiting time
- info about the ONE FOR ALL product range

Before contacting us, by Fax, E-mail or Phone, make sure you have the required information available by filling in the table below.

Model : URC-9990 Date of purchase (.....-.....-.....)

Helpcode(*)	Device	Brand	Device	Remote model nr.	SET-UP model nr. code
1910805	TV	Sony	KVX-2950B	RMT-V131B	0505 (example)

In the UK
 e-mail: ofahelp@uebv.com
 fax: +31 53 432 9816
 tel.: 0808-1000306(*)

In Ireland
 e-mail : ofahelp@uebv.com
 fax: +31 53 432 9816
 tel.: 1-800 553199 (*)

In Australia
 e-mail: ofahelp@uebv.com
 fax: +31 53 432 9816
 tel.: 1-800 064472

In South Africa
 e-mail: support@oneforall.co.za
 fax: 011 298 2302
 tel.: 0860 100551 / tel.: 011 298 2300

In New Zealand
 e-mail: ofahelp@uebv.com
 fax: (06) 878 2760
 tel.: 0508 ONE 4 ALL (663 4 255)

(*) When you call us you will be asked to enter your helpcode(s). You only have to enter the helpcode(s) of those devices you have a problem with.

The helpcode is a 7-digit code, which defines the ONE FOR ALL-model you have, the device type and the brand of your device. This helpcode can be found in the first column of the setup code list.

Televisions

Fernseher

Téléviseurs

1910991	A.R. Systems	0037		
1911306	Accent	0037		
1912089	Acec	0012		
1910010	Admiral	0087	0093	0418
		0264		
1910012	Adyson	0217	0216	
1911080	Agashi	0216	0264	
1910015	AGB	0516		
1910997	Agef	0087		
1910017	Aiko	0216	0009	0037
		0371	0433	0072
		0361	0191	0264
		0217		
1910018	Aim	0037		
1910020	Akai	0361	0208	0371
		0037	0433	0191
		0009	0072	0218
		0163	0516	0602
		0556	0581	0480
		0217	0631	0216
		0264	0448	0178
1910021	Akiba	0377	0606	
		0218	0282	0455
		0037		
1910022	Akito	0037		
1910023	Akura	0218	0282	0009
		0412	0264	0037
		0493	0668	
1911267	Alaron	0216		
1910024	Alba	0218	0235	0009
		0418	0370	0355
		0371	0037	0216
		0247	0163	0581
		0487	0036	0668
		0579		
1910029	Allorgan	0206	0294	0217
1910032	Allstar	0037		
1910041	Amplivision	0217	0400	0370
1910042	Amstrad	0177	0009	0516
		0264	0218	0371
		0433	0412	0037
		0648		
1911094	Anam	0037	0009	
1911268	Anam National	0037		
1910044	Anglo	0009	0264	
1910045	Anitech	0009	0264	0037
1910047	Ansonic	0370	0292	0102
		0009	0037	0374
		0163	0411	0259
		0247	0012	
1910050	Apollo	0473		
1910053	Arc en Ciel	0109	0196	0198
1910054	Arcam	0216	0217	
1911307	Ardem	0486		
1910057	Aristona	0037	0556	0012

1910059	Arthur Martin	0163	0400	
1910060	ASA	0105	0346	0070
		0104	0087	
1910062	Asberg	0037		
1911095	Asora	0009		
1910070	Asuka	0218	0264	0216
		0282	0217	
1910072	Atlantic	0037	0216	0206
		0259		
1910074	Atori	0009		
1910075	Auchan	0163	0400	
1910080	Audiosonic	0037	0109	0217
		0370	0264	0218
		0486		
1910081	Audioton	0217	0486	0370
		0264		
1910085	Autovox	0087	0206	0217
		0247	0336	
1911156	AWA	0011	0036	0009
		0374	0412	0037
		0216	0606	
1911081	Ayomi	0238		
1910091	Baird	0109	0193	0190
		0072	0073	0217
		0208		
1910093	Bang & Olufsen	0565	0087	
1910094	Barco	0163		
1910097	Basic Line	0218	0009	0374
		0037	0163	0282
1910098	Bastide	0217		
1910099	Baur	0303	0195	0512
		0037	0191	0361
		0505	0010	
1911082	Bazin	0217		
1911079	Beaumark	0178		
1910103	Beko	0370	0486	0037
		0606		
1910105	Beon	0037	0418	
1910106	Best	0370		
1910107	Bestar	0037	0370	0374
1910108	Binatone	0217		
1910110	Black Star	0247		
1910111	Blacktron	0282		
1910112	Blackway	0282		
1910113	Blaupunkt	0191	0195	0200
		0327	0328	0448
1910114	Blue Sky	0218	0282	0455
		0037	0487	0668
1910115	Blue Star	0282		
1910118	Bondstec	0247		
1910119	Boots	0217		
1910121	BPL	0282	0037	
1910123	Brandt	0109	0196	0198
		0335	0625	
1910126	Brinkmann	0418	0037	
1911030	Brionvega	0037	0087	
1910128	Britannia	0216	0217	
1911444	Brother	0264		
1910133	Bruns	0087		
1910134	BSR	0163	0294	
1910138	BTC	0218		

1910139 Bush 0218 0235 0163
 0009 0036 0282
 0037 0355 0371
 0374 0264 0361
 0487 0208 0581
 0294 0217 0668
 1910149 Capsonic 0264
 1911455 Carad 0610 0037
 1910150 Carena 0455 0037
 1910151 Carrefour 0036 0070
 1910153 Carver 0170
 1910998 Cascade 0009 0037
 1910154 Casio 0037
 1910155 Cathay 0037
 1911231 CCE 0037 0217
 1910160 Centurion 0037
 1910161 Century 0087 0247 0238
 1910162 CGE 0074 0084 0247
 0163 0418 0370
 1910167 Cimline 0009 0235 0218
 1910169 City 0009
 1911073 Clarivox 0418 0070
 1910172 Clatronic 0218 0264 0370
 0371 0217 0247
 0037 0009 0102
 0579
 1911308 CMS hightec 0217
 1910186 Concorde 0009
 1910187 Condor 0216 0247 0282
 0037 0370 0009
 0102 0411 0418
 1910191 Contec 0216 0009 0011
 0036
 1910192 Continental
 Edison 0109 0196 0198
 0487
 1910194 Cosmel 0009
 1910196 Crosley 0087 0247 0074
 0084 0163
 1910197 Crown 0009 0370 0486
 0037 0579 0418
 0208 0487 0053
 1910200 CS Electronics 0247 0216 0218
 1910201 CTC 0247
 1910202 Curtis Mathes 0093 0166
 1910203 Cybertron 0218
 1910205 Daewoo 0009 0037 0216
 0374 0218 0217
 0624
 1910206 Dainichi 0218 0216
 1910207 Dansai 0037 0264 0216
 0009
 1911160 Dansette 0412
 1911083 Dantax 0370 0486
 1911102 Datsura 0208
 1910209 Dawa 0037
 1910210 Daytron 0009 0374 0037
 1910216 de Graaf 0208 0044 0163
 1910214 Decca 0072 0516 0037
 0217
 1911459 Deitron 0037
 1910999 Denko 0264
 1911103 DER 0193 0190

1910220 Desmet 0037
 1911000 Diamant 0037
 1911310 Digiline 0037
 1910232 Dixi 0009 0037 0247
 0217
 1911255 Drean 0037
 1910239 DTS 0009
 1910240 Dual 0217 0259 0336
 0037 0303 0163
 1910243 Dumont 0087 0104 0102
 0217 0070 0072
 1911162 Dux 0037 0012
 1910247 Dynatron 0037
 1910252 Elbe 0435 0238 0259
 0292 0370 0163
 0037 0218 191
 0411 0610
 1910254 Elcit 0087 0247 0516
 0102 0163
 1910255 Elekta 0264 0282
 1912093 ELG 0037
 1910259 Elin 0216 0037 0105
 0104 0361 0448
 0163 0009
 1910260 Elite 0218 0037
 1910261 Elman 0102
 1910263 Elta 0009 0264 0216
 1910265 Emerson 0177 0087 0178
 0247 0037 0371
 0070 0282
 1910267 Emperor 0282
 1910271 Erres 0037 0012
 1910272 ESC 0037
 1910273 Etron 0037 0009 0163
 1911632 Eurofeel 0264
 1910278 Euroman 0216 0264 0037
 0217 0370
 1910279 Europa 0037
 1910280 Europhon 0037 0516 0102
 0217 0247 0163
 1910291 Expert 0206 0400 0259
 0163
 1911001 Exquisit 0037 0247
 1910294 Fenner 0374 0009
 1910296 Ferguson 0073 0190 0335
 0238 0193 0109
 0625
 1910299 Fidelity 0193 0216 0371
 0163 0264 0037
 0217
 1911164 Filsai 0208 0346 0361
 1910301 Finlandia 0105 0104 0037
 1910302 Finlux 0346 0217 0072
 0163 0516 0070
 0087 0102 0411
 0631 0480
 1910304 Firstline 0294 0321 0216
 0037 0374 0247
 0009 0163 0102
 0217 0411 0238
 0072 0235 0668
 0208 0624

1910305	Fisher	0104 0217 0036 0208 0370 0045 0087 0361 0163 0303 0072
1910307	Flint	0037 0455 0072 0218 0102
1911002	FNR	0193
1910308	Forgestone	0087 0216 0163
1910309	Formenti	0093 0087
1910310	Fortress	0370 0037
1910313	Fraba	0009 0037 0102
1911106	Friac	0247 0264 0448 0217 0009
1910319	Frontech	0206 0072 0102 0217 0163 0009
1910322	Fujitsu	0009 0217
1911457	Fujitsu General	0264 0294
1910323	Funai	0102 0037
1910326	Galaxi	0370 0418 0037 0102
1910327	Galaxis	0163 0009 0374 0218
1910331	GBC	0109 0178 0282 0335
1910333	GE	0163 0400
1911003	Geant Casino	0072 0163 0361 0516 0037 0217
1910335	GEC	0247 0009 0163 0374 0109
1910336	Geloso	0109
1910337	General	0009
1910338	General	0218 0037 0412 0493
1910339	Technic	0216
1910339	Genexxa	0037 0370 0290 0009 0377 0217 0247 0216 0163 0178 0361 0044
1910345	Goldhand	0036 0072 0037 0009 0264 0516 0290 0374 0487 0371 0556 0235 0480 0217 0624 0335
1910347	GoldStar	0370 0218
1910349	Goodmans	0037 0053 0170 0361 0371 0037 0400 0226 0356 0012 0045 0072 0108 0208 0217 0036 0516 0473 0335
1910350	Gorenje	0282 0218 0400 0037 0009 0163 0455 0579 0610
1910351	GPM	0102 0217
1911248	Gradiente	0195 0191 0487 0070 0037 0556
1910352	Graetz	0264 0216 0217 0216 0217
1910353	Granada	
1910354	Grandin	
1911107	Gronic	
1910355	Grundig	
1910359	Halifax	
1910360	Hampton	

1911108	Hanimex	0294
1910362	Hanseatic	0037 0292 0282 0163 0361 0370 0009 0294 0217 0087
1910363	Hantarex	0009 0037 0102
1910364	Hantor	0037
1911084	Harwood	0009 0412 0037
1911678	Hauppauge	0037
1910370	HCM	0264 0009 0282 0412 0217 0218 0418 0037
1910372	Hema	0217 0009
1910374	Hifivox	0109 0196
1911682	Highline	0264 0037
1911110	Hikona	0218
1910377	Hinari	0208 0036 0037 0218 0009 0163 0355 0443 0487 0235 0294
1910380	Hisawa	0282 0218 0400 0455
1911004	Hit	0087
1910381	Hitachi	0225 0036 0356 0044 0473 0163 0578 0196 0198 0217 0194 0516 0072 0481 0037 0563 0105 0178 0556
1911684	Hitachi Fujian	0108
1911170	Hitsu	0009 0455 0218
1911085	Hornophone	0037 0012
1910384	Hoshai	0218 0455
1911086	Huanyu	0374 0216
1910388	Hygashi	0217 0216
1910389	Hyper	0009 0216 0217 0247
1910390	Hypersonic	0361
1910391	Hypson	0037 0264 0217 0282 0455 0400 0238
1911005	Iberia	0037
1910393	ICE	0264 0217 0037 0371 0218 0216 0009
1911006	Ices	0218 0216
1910395	Imperial	0037 0247 0370 0418 0163 0074 0084 0196
1910397	Indiana	0037
1911343	Ingelen	0487 0610
1910398	Ingersoll	0009
1910401	Inno Hit	0009 0072 0037 0218 0290 0217 0516 0247
1911312	Interactive	0411
1910404	Interbuy	0009 0264 0247
1910405	Interfunk	0037 0012 0087 0512 0327 0163 0361 0370 0109
1911113	Internal	0037

1910408	Intervision	0282 0217 0455 0037 0371 0377 0448 0486 0370 0487 0218 0102 0163 0264 0247		1911008	Liesenkotter	0037 0327 0328 0012	
1910410	Irradio	0009 0037 0218 0247 0290		1910463	Lifetec	0009 0264 0037 0374 0218 0668 0512	
1910412	Isukai	0218 0037 0282		1911240	Lloyd's	0009	
1910413	ITC	0217		1910472	Loewe	0512 0037 0087 0292 0370	
1910414	ITS	0037 0371 0218 0282 0264 0216 0163 0480 0361 0473 0193 0346 0208		1910474	Logik	0011 0193 0371	
1910415	ITT			1911456	Logix	0668	
1910416	ITT Nokia	0361 0163 0473 0480 0346 0208 0606 0610 0631		1910478	Luma	0206 0037 0163 0259 0411 0374 0009	
1910417	ITV	0264 0037 0247		1911009	Lumatron	0206 0037 0163 0259 0361 0217 0264 0073	
1911314	Jean	0036		1910481	Lux May	0037 0009	
1910425	JVC	0653 0053 0094 0190 0036 0193 0371 0218 0606		1910485	Luxor	0194 0290 0480 0361 0208 0356 0163 0346 0473	
1910427	Kaisui	0218 0282 0037 0216 0455 0217 0009		1911241	LXI	0178	
1910428	Kamp	0216		1911316	Madison	0037	
1910429	Kapsch	0206 0163 0361 0259 0104		1910490	Magnadyne	0087 0247 0516 0102 0163	
1910430	Karcher	0037 0370 0282 0102 0610 0264		1910491	Magnafon	0516 0102 0216	
1911283	Kawasho	0216		1910492	Magnavox	0036 0037	
1911177	KB Aristocrat	0163		1911071	Magnum	0648	
1910432	Kendo	0235 0247 0102 0037 0370 0411 0610 0377		1910495	Mandor	0264	
1910433	Kennedy	0206 0163 0435		1910496	Manesth	0037 0235 0217 0264 0294	
1910437	Kingsley	0216		1910497	Manhattan	0037 0668	
1910438	Kneissel	0435 0259 0292 0370 0238 0037 0411 0610		1910500	Marantz	0037	
1910441	Kolster	0037 0102		1910503	Marelli	0087	
1910442	Konka	0218 0371 0037		1910504	Mark	0037 0217 0216 0374 0009	
1911315	Kontakt	0487		1911342	Masuda	0218 0009 0371 0235 0177 0009	
1910443	Korpel	0037		1910508	Matsui	0355 0011 0072 0036 0037 0556 0487 0217 0294 0371 0433 0443	
1910444	Korting	0087 0370		1910517	Mediator	0037 0556 0012	
1910445	Kosmos	0037		1910518	Medion	0037 0668	
1911181	Kotron	0412 0264		1911121	Megas	0610	
1911350	Kraking	0238		1911291	Megatron	0178	
1911287	KTV	0217		1910487	Melectronic	0346 0037 0512 0109 0247 0105 0104 0374 0009 0217 0480 0216 0411	
1911117	Kyoshu	0264 0412 0418		1911010	Melvox	0400	
1910451	Kyoto	0163		1910520	Memorex	0009 0178 0250	
1911451	Lemair	0411		1910521	Memphis	0072 0009	
1910454	Lenco	0009 0104 0163 0037		1910522	Mercury	0037 0009	
1910456	Lenoir	0009		1910525	Metz	0087 0195 0191 0367	
1910458	Lesa	0247		1910526	MGA	0178	
1910461	Leyco	0264 0072 0037 0294 0579		1911317	Micromaxx	0037 0668	
1911072	LG	0037 0370 0290 0009 0377 0217 0247 0216 0163 0178 0361		1910531	Minerva	0487 0195 0070 0191	

1910532 Minoka 0412 0037
 1910535 Mitsubishi 0108 0512 0037
 0093 0178 0087
 0036 0193
 1910538 Mivar 0292 0290 0291
 0370 0216
 1911186 Monaco 0009
 1910540 Morgan's 0037
 1911297 Motorola 0093
 1910543 MTC 0370 0512 0216
 1911187 Multibroadcast 0193
 1910545 Multistandard 0102
 1911452 Multitec 0037 0668
 1910547 Multitech 0217 0009 0216
 0247 0102 0486
 0370 0037
 1910551 Murphy 0104 0216 0072
 0163
 1911791 Musikland 0218
 1910553 NAD 0361 0166 0178
 1911124 Naiko 0037
 1911125 Nakimura 0374 0037
 1912099 NAT 0226
 1910562 National 0226
 1910564 NEC 0170 0036 0455
 0009 0374 0217
 0037 0011
 1910565 Neckermann 0037 0191 0370
 0505 0010 0200
 0556 0163 0327
 0418 0087 0247
 0217 0411
 1910566 NEI 0037 0371
 1910567 Nesco 0247
 1911292 Netsat 0037
 1911012 Neufunk 0037 0009 0556
 0610
 1910572 New Tech 0037 0009 0556
 0217 0448
 1910571 New World 0218
 1910574 Nicamagic 0216
 1910576 Nikkai 0072 0218 0037
 0217 0264 0216
 0009 0036
 0178
 1910577 Nikko 0037 0264
 1911249 Noblex 0102 0070 0216
 1910578 Nobliko 0109 0196
 1910579 Nogamatic 0361 0163 0480
 0473 0208 0374
 0631 0606 0346
 1910582 Nordmende 0109 0196 0198
 0195 0037 0335
 0037 0105 0374
 1911013 Novatronic 0163 0400 0361
 1910588 Oceanic 0294 0208 0563
 0264
 1912100 Odeon 0370 0037 0264
 0072
 1910590 Okano 0264
 1911014 Omega 0371 0218 0433
 1910595 Onwa 0581
 1910596 Opera 0037

1910598 Optimus 0250 0166
 1911299 Optonica 0093
 1910599 Orbit 0037
 1910602 Orion 0235 0294 0177
 0355 0011 0037
 0009 0321 0102
 0443 0556 0264
 0412
 1911015 Orline 0037 0218
 1911192 Ormond 0668
 1910605 Osaki 0072 0218 0217
 0264 0493 0037
 0412 0374
 1911193 Osio 0037
 1910607 Oso 0218
 1910608 Osume 0072 0036 0218
 1910610 Otto Versand 0010 0505 0036
 0093 0512 0037
 0556 0195 0191
 0361 0235 0109
 0294 0226 0247
 0303 0217
 1910614 Pael 0216
 1910616 Palladium 0370 0037 0191
 0505 0010 0200
 0418 0556 0247
 0327 0087 0163
 0217 0411
 1911129 Palsonic 0264 0412 0037
 0217 0377
 1910619 Panama 0009 0217 0264
 0216 0037 0247
 1910620 Panasonic 0226 0650 0250
 0126 0361 0367
 0516 0037 0163
 1910622 Panavision 0037 0411
 1910628 Pathe Cinema 0163 0238 0216
 0400 0292
 1910629 Pathe Marconi 0109 0196 0198
 1910631 Pausa 0009
 1910632 Perdio 0072 0163 0037
 1910633 Perfekt 0037
 1911460 Pershin 0400
 1910634 Philco 0087 0084 0074
 0418 0247 0163
 0370 0037
 1910635 Philharmonic 0217
 1910636 Philips 0037 0556 0012
 0191 0087 0193
 0374
 1910639 Phoenix 0037 0087 0486
 0370 0216 0163
 0072
 1910640 Phonola 0037 0556 0012
 0087 0193 0216
 1910642 Pioneer 0166 0037 0370
 0361 0109
 1911132 Pionier 0370 0486
 1910644 Plantron 0037 0264 0009
 1911066 Playsonic 0217
 1910647 Poppy 0009
 1910648 Portland 0374
 1911846 Powerpoint 0487

1910650	Prandoni-Prince	0247	0516	0361
1910651	Precision	0217		
1910655	Prima	0009	0264	
1910656	Prinz	0072	0194	
1910658	Profex	0009	0163	
1910660	Profitronic	0037	0102	
1910662	Proline	0321	0072	0037
		0012	0625	
1910664	Prosonic	0037	0216	0370
		0374	0579	0371
		0668		
1910665	Protech	0037	0217	0009
		0247	0102	0264
		0418	0668	
1910667	Proton	0178		
1910669	Provision	0037		
1910672	Pye	0037	0374	0556
		0012	0087	
1910673	Pymi	0009		
1911067	Quadra Vision	0400		
1910677	Quasar	0247	0250	
1910678	Quelle	0037	0010	0011
		0109	0512	0191
		0361	0036	0217
		0247	0074	0084
		0327	0070	0104
		0105	0195	0200
		0264	0290	0668
1910679	Questa	0036		
1910680	R-Line	0037		
1910682	Radialva	0109	0218	0163
		0037		
1910684	Radiola	0037	0556	0012
1910685	Radiomarelli	0087	0516	0247
		0037		
1911088	RadioShack	0037	0178	
1910686	Radiotone	0009	0037	0370
		0579	0418	0264
		0412	0648	
1910690	Rank	0070		
1910691	RCA	0625	0335	0093
1910693	Realistic	0178		
1911016	Recor	0037		
1912101	Rectiligne	0037		
1910695	Rediffusion	0361	0036	
1911017	Redstar	0037		
1911018	Reflex	0037		
1910698	Revox	0037	0370	
1910699	Rex	0206	0411	0247
		0163	0259	
1910700	RFT	0087	0292	0370
		0072	0264	
1911338	Rhapsody	0216		
1910701	Roadstar	0009	0264	0218
		0418	0037	
1910703	Robotron	0087		
1911197	Roxy	0448		
1910711	Royal Lux	0370	0412	
1910715	Saba	0087	0163	0109
		0516	0361	0196
		0198	0335	0625
1910718	Sagem	0455	0610	0282

1910720	Saisho	0235	0516	0177
		0009	0011	0217
		0163	0264	
1910722	Salora	0290	0194	0163
		0356	0361	0516
1910723	Sambers	0516	0102	
1910724	Samsung	0037	0556	0587
		0009	0217	0178
		0448	0370	0264
		0216	0290	0072
		0208	0644	
1910726	Sandra	0216	0217	
1911139	Sanela	0238		
1910727	Sansui	0037	0371	
1912102	Santon	0009		
1910729	Sanyo	0208	0292	0036
		0011	0370	0072
		0216	0217	0104
		0045	0009	0163
		0037		
1911318	Save	0037		
1910743	SBR	0037	0556	0012
1910745	Schaub Lorenz	0606		
1910746	Schneider	0037	0556	0012
		0303	0336	0259
		0217	0247	0371
		0218	0361	0163
		0668	0648	
1910750	Scott	0178		
1911324	Sears	0178		
1910753	SEG	0217	0264	0009
		0247	0036	0102
		0163	0037	0216
		0668	0487	
1910754	SEI	0087	0102	0010
		0163	0516	0294
		0206	0037	
1910756	Seleco	0206	0259	0163
		0411		
1910757	Sencora	0009		
1910759	Sentra	0218	0009	
1911265	Serie Dorada	0178		
1911019	Serino	0455	0610	
1910762	Sharp	0093	0036	0294
		0653	0053	0094
		0193		
1910769	Shorai	0294		
1911263	Siam	0037		
1910772	Siarem	0163	0087	0102
1910773	Siemens	0191	0200	0195
		0327	0328	0037
1911916	Siera	0037	0556	0012
1910776	Siesta	0370		
1910780	Silva	0216	0037	
1910781	Silver	0036	0361	
1910782	Singer	0087	0102	0247
		0400	0435	0009
		0037		
1910783	Sinudyne	0177	0087	0235
		0102	0294	0163
		0361	0516	0010
		0206	0037	
1910784	Skantic	0356		

1911298 Sky 0037
 1910797 Solavox 0361 0072 0163
 1911927 Sonawa 0218
 1910801 Sonitron 0208 0370 0217
 1911035 Sonneclair 0037
 1910802 Sonoko 0037 0009 0264
 0282 0217
 1910803 Sonolor 0208 0163 0400
 0505 0010 0361
 1910804 Sontec 0037 0370 0294
 1910805 Sony 0505 0010 0011
 0036 0102 0074
 1910806 Sound & Vision 0102 0218 0374
 1910807 Soundesign 0178
 1910809 Soundwave 0037 0418
 1911143 Ssangyong 0009
 1910813 Standard 0218 0009 0217
 0037 0374
 1910817 Starlite 0009 0163 0037
 0264
 1910822 Stenway 0282 0218
 1910823 Stern 0206 0259 0163
 1911020 Strato 0037 0264 0009
 1910828 Sunkai 0294 0355 0321
 0455 0218 0235
 0037 0487
 1910831 Sunstar 0371 0037 0009
 0579
 1910833 Sunwood 0037 0009
 1910835 Superla 0516 0216
 1910838 SuperTech 0009 0037 0216
 0556 0218
 1910839 Supra 0374 0009
 1910840 Susumu 0335
 1910841 Sutron 0009
 1911319 Swissline 0247
 1910842 Sydney 0216 0217
 1911021 Sytong 0216
 1910849 Tandberg 0367 0411 0109
 0196 0361
 1910850 Tandy 0218 0072 0217
 0247 0093
 1910852 Tashiko 0036 0217 0170
 0216 0163
 1910853 Tatung 0072 0516 0217
 0037 0011
 1910854 Teac 0037 0512 0455
 0264 0009 0412
 0178
 1910855 TEC 0217 0009 0247
 0335 0259
 1911320 Tech Line 0037 0668
 1912107 Technica 0218
 1910857 Technics 0250
 1911453 Tedexlex 0217
 1911978 Teiron 0009
 1910866 Teleavia 0109 0196
 1910870 Telecor 0037 0163 0218
 0217 0259
 1910872 Telefunken 0109 0074 0084
 0101 0335 0262
 0073 0196 0037
 0486 0625

1911213 Telefusion 0037
 1910874 Telegazi 0037 0163 0259
 0218 0264
 1910878 Telemeister 0037
 1910882 Telesonic 0037
 1910883 Telestair 0037
 1910884 Teletech 0009 0247 0037
 0668
 1910885 Teleton 0217 0206 0163
 0259 0036
 1910887 Televideon 0163 0216
 1911022 Televiso 0400
 1910889 Temco 0294
 1911334 Tempest 0009 0037
 1910891 Tensai 0104 0218 0037
 0217 0294 0009
 0105 0374 0371
 0377 0247
 1911023 Tenson 0009
 1911461 Tevion 0037 0648 0668
 1910892 Texet 0217 0374 0009
 1910895 Thomson 0109 0335 0196
 0198 0037 0625
 1910897 Thorn 0193 0073 0190
 0238 0074 0084
 0037 0104 0335
 0512 0374
 1911329 TMK 0178
 1910900 Tokai 0072 0037 0448
 0163 0217 0374
 0009
 1910901 Tokyo 0216 0448
 1910902 Tomashi 0282 0218
 1910905 Toshiba 0508 0036 0070
 0102 0217
 1910906 Towada 0102 0217
 1912109 Toyoda 0009
 1912110 Trakton 0264
 1910908 Trans
 Continens 0217 0037
 1912111 Transonic 0037 0455 0587
 0512
 1912008 Transtec 0216
 1910913 Trident 0516 0217
 1910915 Tristar 0218 0193
 1910916 Triumph 0177 0516 0346
 0556 0037
 1910919 Uher 0037 0206 0303
 0374 0418 0486
 0370 0259
 1910920 Ultravox 0087 0102 0374
 0247 0216 0163
 0037
 1911024 Unic Line 0037 0473
 1911215 United 0037

1910929	Universum	0346 0105 0195 0473 0361 0247 0480 0370 0200 0418 0011 0512 0294 0036 0070 0163 0264 0104 0037 0411 0290 0074 0327 0328 0010 0505 0217 0109 0177 0631 0668
1910930	Univox	0087 0037 0163 0238
1910937	Vestel	0037 0163 0217
1910938	Vexa	0009 0037
1910939	Victor	0053
1910942	Videologique	0216 0218 0217
1910943	VideoSystem	0037
1910944	Videotechnic	0216 0217 0374
1911025	Videoton	0356 0163
1911322	Vidikron	0102
1911330	Vidtech	0036 0178
1910949	Visiola	0216
1910950	Vision	0037
1910954	Vistar	0206 0361
1910956	Vortec	0037
1910957	Voxson	0087 0037 0418
1910958	Waltham	0217 0356 0418 0037
1910959	Watson	0037 0163 0218 0579 0009 0668
1910960	Watt Radio	0102 0163 0216
1910961	Wega	0036 0087 0037
1911026	Wegavox	0009
1910963	Weltblick	0037
1911245	Wharfedale	0037
1910967	White	
	Westinghouse	0216 0037
1911264	Winco	0412
1911027	Windstar	0282
1910976	Xrypton	0037
1910979	Yamishi	0282 0455 0218 0037 0217
1910980	Yokan	0037
1910981	Yoko	0217 0037 0218 0264 0009 0370 0216 0247 0218
1910983	Yorx	0218
1910984	Zanussi	0206 0217

Video Recorders

Videorecorder

Magnétoscopes

1921028	Adelsound	0004
1920012	Adyson	0072
1920019	Aiwa	0307 0000 0041 0348 0352 0037

1920020	Akai	0106 0315 0041 0020 0352 0240
1920021	Akiba	0072
1920023	Akura	0072 0041
1920024	Alba	0278 0072 0352 0020 0000 0315 0348
1920029	Allorgan	0240
1920032	Allstar	0081
1920037	Ambassador	0020
1920042	Amstrad	0000 0278 0072
1920045	Anitech	0072
1920047	Ansonic	0004
1920057	Aristona	0081
1920060	ASA	0037 0081
1920070	Asuka	0072 0037 0081 0000 0038
1920080	Audiosonic	0278
1920081	Audioton	0020
1921156	AWA	0037 0278 0043
1920091	Baird	0106 0278 0104 0041 0000
1920093	Bang & Olufsen	0499
1920097	Basic Line	0278 0020 0072
1920107	Bestar	0278 0020
1920109	Black Panther	0278
1920113	Blaupunkt	0226 0081 0162 0195
1920114	Blue Sky	0037 0348 0072 0352
1920118	Bondstec	0020 0072
1920123	Brandt	0041 0320 0321 0493
1920126	Brinkmann	0348
1920139	Bush	0072 0278 0315 0352 0000 0348
1920150	Carena	0081
1920151	Carrefour	0045
1920154	Casio	0000
1920155	Cathay	0278
1920156	Catron	0020
1920162	CGE	0041 0000
1920167	Cimline	0072
1920172	Clatronic	0020 0072
1920180	Combitech	0352
1920187	Condor	0020 0278
1920197	Crown	0278 0072 0020
1920205	Daewoo	0278 0020 0045 0352
1920207	Dansai	0072 0278
1920210	Daytron	0278
1920216	de Graaf	0042 0081 0104 0048
1920214	Decca	0000 0041 0081 0008 0067 0348
1921459	Deitron	0278
1920999	Denko	0072
1921000	Diamant	0037
1920240	Dual	0041 0081 0278 0000
1920243	Dumont	0000 0081 0104
1920252	Elbe	0278 0038
1920253	Elcatech	0072

1920259 Elin 0240
 1921031 Elsay 0072
 1920263 Elta 0072 0278
 1920265 Emerson 0072 0045
 1920272 ESC 0278 0240 0020
 1920274 Etzuko 0072
 1920280 Europhon 0020
 1920294 Fenner 0020
 1920296 Ferguson 0041 0320 0321
 0493 0000 0278
 1920299 Fidelity 0000 0072 0240
 1920301 Finlandia 0104 0081 0042
 0000 0048
 1920302 Finlux 0000 0081 0104
 0042
 1920304 Firstline 0072 0348 0043
 0037 0045 0042
 0278
 1920305 Fisher 0104 0038 0020
 1920319 Frontech 0020
 1920322 Fujitsu 0000
 1920323 Funai 0000
 1920326 Galaxi 0000
 1920331 GBC 0020
 1920335 GEC 0081
 1920337 General 0020
 1920338 General
 Technic 0348
 1920339 Genexxa 0104
 1920345 Goldhand 0072
 1920347 GoldStar 0037 0000
 1920349 Goodmans 0000 0072 0240
 0278 0037 0020
 0081 0348
 1921248 Gradiente 0008
 1920352 Graetz 0041 0104 0240
 1920353 Granada 0104 0048 0081
 0240 0037 0226
 0042 0000
 1920354 Grandin 0072 0037 0020
 0000 0278
 1920355 Grundig 0195 0081 0347
 0226 0320 0348
 1921108 Hanimex 0352
 1920362 Hanseatic 0037 0278 0081
 1920364 Hantor 0020
 1921084 Harwood 0072
 1920370 HCM 0072
 1920377 Hinari 0004 0072 0352
 0041 0278
 1920380 Hisawa 0352
 1920381 Hitachi 0042 0041 0000
 0240 0081 0004
 0104
 1921085 Hornyphone 0081
 1920391 Hypson 0072 0278 0352
 1920394 Impego 0020
 1920395 Imperial 0000 0240
 1920398 Ingersoll 0004 0240
 1920401 Inno Hit 0020 0240 0278
 0072
 1920404 Interbuy 0037 0072
 1920405 Interfunk 0081 0104

1921113 Internal 0278
 1921114 International 0278
 1920408 Intervision 0000 0278 0037
 0348
 1920410 Irradio 0072 0037 0081
 1920415 ITT 0106 0041 0104
 0240
 1920416 ITT Nokia 0048
 1920417 ITV 0278 0037 0020
 1920425 JVC 0041 0067 0008
 1920427 Kaisui 0072
 1920430 Karcher 0278
 1920432 Kendo 0106 0315 0348
 0072 0037
 1920434 Kenwood 0041 0038
 1920438 Kneissel 0352 0348 0037
 1920443 Korpel 0072
 1922095 Kuwa 0226
 1920451 Kyoto 0072
 1920461 Leyco 0072
 1921072 LG 0037 0000 0278
 1920463 Lifetec 0348
 1920472 Loewe 0081 0037 0004
 0162 0454
 1920474 Logik 0004 0240 0072
 0106
 1921009 Lumatron 0278
 1920485 Luxor 0106 0043 0072
 0104 0048
 1920492 Magnavox 0081
 1920496 Manesth 0072 0045 0081
 1920500 Marantz 0081 0038
 1920504 Mark 0278 0020
 1920508 Matsui 0004 0348 0037
 0240 0352 0000
 1920517 Mediator 0081
 1920518 Medion 0348 0352
 1920487 Melectronic 0000 0037 0038
 1920520 Memorex 0104 0000 0037
 0048
 1920521 Memphis 0072
 1920525 Metz 0195 0347 0081
 0162 0454 0226
 1921323 Micormay 0348
 1920529 Migros 0000
 1920531 Minerva 0195
 1920535 Mitsubishi 0043 0067 0081
 1920547 Multitech 0000 0072 0020
 0104
 1920551 Murphy 0000
 1920553 NAD 0104
 1920562 National 0226 0162
 1920564 NEC 0041 0038 0067
 0104 0037
 1920565 Neckermann 0041 0081
 1920567 Nesco 0072 0000 0352
 1920576 Nikkai 0020 0072 0278
 1920580 Nokia 0104 0106 0315
 0041 0278 0240
 0048 0042 0081
 1920582 Nordmende 0041 0320 0321
 0067 0493

1920588 Oceanic 0000 0048 0106
 0081 0104 0041
 1920590 Okano 0315 0348 0072
 0278
 1920602 Orion 0004 0352 0348
 1920604 Orson 0000
 1920605 Osaki 0000 0037 0072
 1920610 Otto Versand 0081
 1920616 Palladium 0072 0315 0037
 0041 0004 0240
 1921129 Palsonic 0072 0000
 1920620 Panasonic 0162 0454 0226
 1920628 Pathe Cinema 0004 0043
 1920629 Pathe Marconi 0041
 1920632 Perdio 0000
 1920634 Philco 0038 0072
 1920636 Phillips 0081
 1920640 Phonola 0081
 1920642 Pioneer 0067 0081 0042
 1920648 Portland 0020 0278
 1920656 Prinz 0000
 1920660 Profitronic 0081 0240
 1920662 Proline 0000 0320 0321
 1921194 Proscoc 0278
 1920664 Prosonic 0278 0000
 1920665 Protech 0081
 1920669 Provision 0278
 1920672 Pye 0081
 1920678 Quelle 0081
 1920682 Radialva 0037 0072 0081
 0048
 1920684 Radiola 0081
 1920690 Rank 0041
 1920699 Rex 0041
 1920700 RFT 0020 0072
 1920701 Roadstar 0240 0072 0037
 0278
 1920710 Royal 0072
 1920715 Saba 0041 0320 0321
 0278
 1920720 Saisho 0004 0348
 1920722 Salora 0043 0106 0104
 1920724 Samsung 0240
 1920725 Samurai 0020
 1920727 Sansui 0041 0067 0106
 0072 0348
 1920728 Sanwa 0004
 1920729 Sanyo 0104 0048 0067
 1920742 Saville 0352 0278 0240
 1920743 SBR 0081
 1921200 Scan Sonic 0240
 1920745 Schaub Lorenz 0041 0104 0000
 0106 0315
 1920746 Schneider 0072 0000 0037
 0081 0278 0240
 1922103 Seaway 0278
 1920753 SEG 0072 0240 0278
 1920755 Sei-Sinudyne 0004 0081
 1920756 Seleco 0041 0008 0020
 0037
 1921250 Semivox 0045
 1920759 Sentra 0072 0020
 1921910 Setron 0072

1920762 Sharp 0048 0037
 1920766 Shintom 0072 0104
 1920768 Shivaki 0037
 1920769 Shorai 0004
 1920773 Siemens 0195 0037 0104
 0081
 1921916 Siera 0081
 1920780 Silva 0037
 1920781 Silver 0278
 1920783 Sinudyne 0004 0081
 1920797 Solavox 0020
 1921035 Sonneclair 0072
 1920802 Sonoko 0278
 1920803 Sonolor 0048
 1920804 Sontec 0037
 1920805 Sony 0033 0032 0106
 1920809 Soundwave 0037
 1921143 Ssangyong 0072
 1920813 Standard 0278
 1920817 Starlite 0037 0104
 1920823 Stern 0278
 1920828 Sunkai 0348 0278
 1920831 Sunstar 0000
 1920832 Suntronic 0000
 1920833 Sunwood 0072
 1920839 Supra 0037 0240
 1920843 Symphonic 0000 0072
 1920847 Taisho 0004
 1920849 Tandberg 0278
 1920852 Tashiko 0000 0048 0240
 0081 0037
 1920853 Tatung 0000 0041 0081
 0048 0043 0348
 0352
 1920854 Teac 0041 0000 0278
 0037 0081 0307
 1920855 TEC 0020 0278 0072
 1920859 TechniSat 0348
 1920866 Teleavia 0041
 1920872 Telefunken 0041 0320 0321
 0493 0278
 1920884 Teletex 0072 0278 0000
 1921334 Tempest 0020
 1920890 Tenosal 0072
 1920891 Tensai 0000 0037 0072
 0004
 1921461 Tevion 0348
 1920895 Thomson 0041 0320 0321
 0493
 1920897 Thorn 0041 0104 0037
 1920900 Tokai 0072 0037 0041
 0104
 1922002 Tokiwa 0072
 1920904 Topline 0348
 1920905 Toshiba 0045 0041 0043
 0081
 1920906 Towada 0072
 1922110 Trakton 0020
 1920918 TVA 0020
 1920919 Uher 0037 0240
 1920920 Ultravox 0278
 1920924 Unitech 0240

1920926	United Quick Star	0278		
1920929	Universum	0000	0081	0240
		0037	0106	0348
		0195		
1920939	Victor	0008	0067	
1920959	Watson	0081	0352	
1920963	Weltblick	0037		
1920979	Yamishi	0072	0278	
1920980	Yokan	0072		
1920981	Yoko	0037	0072	0020
		0240		

Satellite Receivers

Satellitenempfänger

Récepteurs satellites

1930994	ABsat	0832		
1930013	Aegir	0520		
1930016	AGS	0668		
1930020	Akai	0515	0200	
1931153	Akena	0668		
1930024	Alba	0421	0515	0455
		0613	0713	
1930027	Aldes	0288	0520	
1930030	Allsat	0200		
1930031	Allsonic	0288	0369	
1930033	Alltech	0713		
1930034	Alpha	0668	0200	
1930036	Altai	0396		
1930039	Amitronica	0713		
1930040	Ampere	0396	0829	0132
1930042	Amstrad	0345	0847	0252
		0243	0713	0742
		0396	0132	0885
		0863		
1930044	Anglo	0713		
1930046	Ankaro	0288	0369	0713
1930049	Anttron	0421	0613	
1930050	Apollo	0421		
1930056	Arcon	0692		
1930058	Armstrong	0243	0200	
1930061	Asat	0200		
1931154	ASLF	0713		
1930064	AST	0351	0321	
1930065	Astacom	0668	0710	
1930068	Astra	0108	0243	0607
1930069	Astro	0173	0358	0520
		0613	0369	0501
		0658		
1930071	Athena	0668		
1930081	Audioton	0613		
1931155	Austar	0863	0642	0283
		0497	0879	
1931037	Avalon	0396		
1930088	Axiel	0668		
1930089	Axis	0369		
1930095	Barcom	0108		
1930103	Beko	0455		

1930106	Best	0369		
1930113	Blaupunkt	0173		
1930114	Blue Sky	0713	0885	
1930117	Boca	0243	0794	0829
		0132		
1930122	Brain Wave	0692		
1930130	Broco	0713		
1931070	BskyB	0847		
1931531	BT	0515	0668	0710
1931038	Bubu Sat	0713		
1931039	BVV	0692		
1930143	Cambridge	0515	0501	
1930995	Canal Satellite	0853		
1931458	Chess	0157	0605	
1930170	CityCom	0818	0115	0607
1931099	Clark	0613		
1930176	CNT	0520		
1930177	Colombia	0668		
1930183	Commlink	0288		
1930185	Comtec	0288		
1930187	Condor	0369	0607	
1930189	Connexions	0396	0369	
1930190	Conrad	0607	0573	0115
		0369	0501	
1930197	Crown	0243		
1930198	Cryptovision	0455		
1931092	D-box	0723	0873	
1930205	Daewoo	0713	0421	
1931040	Daumling	0794		
1931161	Delfa	0863		
1931300	Discoverer	0605		
1930227	Discovery	0668		
1931041	Diseqc	0710		
1931352	Distratel	0084	0885	
1930230	Distrisat	0200		
1930233	DNR	0692		
1930234	DNT	0200	0396	
1931042	DST	0421		
1930244	Dune	0369		
1930248	Echostar	0396	0668	0713
		0871	0853	
1930251	Einhell	0243	0421	0288
		0252	0713	0501
		0794	0132	
1930255	Eleкта	0520		
1930263	Elta	0421	0200	0369
1930264	Emanon	0421		
1930266	Emme Esse	0369	0871	
1931043	Engel	0713		
1930268	EP Sat	0455		
1930275	Eurieult	0136	0084	0885
1931044	Eurocrypt	0455	0108	
1930279	Europa	0501	0200	0863
		0607		
1931045	European	0794		
1930282	Eurosat	0243		
1930283	Eurosky	0243	0369	0607
		0132	0115	
1930285	Eurostar	0607	0880	
1930289	Exator	0421	0515	0613
1930294	Fenner	0668		
1930296	Ferguson	0455	0711	
1930299	Fidelity	0252	0501	

1930301 Finlandia 0455 0108
 1930302 Finlux 0455 0108 0573
 1931165 Flair Mate 0713
 1931301 Foxtel 0879 0720 0497
 1930315 Fracarro 0421 0668 0871
 1930317 Freecom 0421
 1930320 FTE 0369 0713
 1930321 Fuba 0369 0396 0421
 0173 0573 0108
 1930327 Galaxis 0288 0369 0692
 0863 0283 0853
 1930328 Galaxisat 0321
 1931449 Gardiner 0818
 1930344 GMI 0243
 1931168 Goldbox 0853
 1930349 Goodmans 0455
 1930353 Granada 0108
 1930354 Grandin 0084 0136
 1930355 Grundig 0173 0847 0571
 0750 0805 0345
 0879 0885
 1930362 Hanseatic 0605
 1930364 Hantor 0421
 1930365 Hanuri 0520
 1931047 Hase & Igel 0692
 1930371 Heliocom 0607
 1930377 Hinari 0421
 1930379 Hirschmann 0173 0573 0501
 0396 0710
 1930381 Hitachi 0455
 1931171 HNE 0742
 1930385 Houston 0668
 1931172 Humax 0863 0283
 1930387 Huth 0607 0288 0243
 0794 0132
 1930391 Hypson 0136
 1931175 Imex 0084 0136
 1931114 International 0132
 1930407 Intertronic 0243
 1930408 Intervision 0628 0607
 1931345 Invideo 0871
 1931302 Italtel 0871
 1930416 ITT Nokia 0108 0573 0455
 0873 0723
 1930424 JOK 0690 0710
 1930425 JVC 0515 0571
 1931048 K-SAT 0713
 1931176 Kamm 0880 0713
 1930431 Kathrein 0358 0173 0200
 0622 0658 0713
 0613 0668 0818
 1930436 Key West 0794
 1932094 Kiton 0114
 1930440 Kolon 0421
 1931454 Konig 0607
 1930446 KR 0613
 1930447 Kreiselmeyer 0173
 1930450 Kyostar 0421 0613
 1931304 L&S Electronic 0369
 1930453 Lasat 0520 0369 0607
 0243 0115 0132
 0157
 1931049 Lemon 0692

1930454 Lenco 0421 0713 0692
 0115 0369 0607
 1930457 Lenson 0501
 1930460 Lexus 0200
 1930461 Leyco 0515
 1930462 Lifesat 0605 0369
 1930472 Loewe 0243
 1930475 Lorenzen 0692 0794 0607
 0742 0132
 1930479 Lupus 0369
 1930485 Luxor 0108 0345 0573
 0873 0501
 0605
 1930486 M&B1 0605
 1931050 Manata 0710 0668 0136
 0713
 1930497 Manhattan 0455 0520 0710
 0668
 1930500 Marantz 0200
 1930506 Maspro 0750 0713 0173
 0571 0692
 0571 0710 0173
 1930508 Matsui 0571 0710 0173
 1930509 Max 0607
 1930511 MB 0605
 1931053 Mediabox 0853
 1930515 Mediemarkt 0243
 1930516 MediaSat 0501 0853
 1930518 Medion 0713 0369
 1931120 Medison 0713
 1930519 Mega 0200
 1930487 Melectronic 0818
 1930524 Metronic 0421 0243 0613
 0288 0520 0084
 0136 0818 0885
 1930525 Metz 0173
 1931123 Micro 0607 0613
 1931054 Micro
 electronic 0713
 1930527 Micro
 Technology 0713
 1931185 Microtec 0713
 1930531 Minerva 0571
 1930535 Mitsubishi 0455
 1930540 Morgan's 0243 0200 0794
 0713 0829 0132
 0642 0879
 1931305 Multichoice 0692 0713
 1931452 Multitec 0157
 1930550 Muratto 0321
 1930552 Mysat 0713
 1930569 Neuhaus 0501 0692 0713
 0607
 1930570 Neusat 0692 0713
 1930573 NextWave 0732
 1930577 Nikko 0243 0713 0723
 1930580 Nokia 0108 0723 0573
 0873 0455 0751
 1023 0853
 1930582 Nordmende 0455 0520 0421
 1930589 Octagon 0421 0613
 1930590 Okano 0243
 1931069 OnDigital 0133 0241 0751
 0137
 1931447 Optus 0879
 1930599 Orbit 0351

1930600	Orbitech	0501	0421	0548
		0157		
1930601	Origo	0497		
1930606	OSAT	0345		
1930611	Oxford	0515	0668	
1930612	Pace	0455	0847	0791
		0795	0241	0720
		0497	0887	
1931441	Packsat	0710		
1930616	Palladium	0243	0571	0421
		0501		
1930617	Palsat	0501		
1931130	Panasat	0879	0615	
1930620	Panasonic	0455	0847	
1930623	Panda	0455	0108	0607
		0173		
1930630	Patriot	0515	0668	
1930636	Phillips	0200	0455	0750
		0710	0613	0805
		0668	0853	0571
		0173	0133	0818
1930641	Phonotrend	0288	0863	
1930642	Pioneer	0853		
1931133	Planet	0871		
1930646	Polytron	0396		
1930652	Predki	0421		
1930653	Preisner	0243	0132	0396
		0794		
1931056	Premiere	0853	0873	
1930661	Profile	0668		
1930663	Prosat	0288	0628	
1930664	Prosonic	0742		
1930669	Provision	0520		
1930672	Pye	0571		
1930676	Quadral	0288	0369	0628
		0668	0710	
1930678	Quelle	0252	0607	0742
		0115		
1930684	Radiola	0200		
1930687	Radix	0396		
1930689	Rainbow	0613		
1930694	Red Star	0369		
1930700	RFT	0288	0200	
1930701	Roadstar	0713		
1930708	Rover	0628	0713	
1930715	Saba	0520	0690	0710
		0692	0885	0115
		0607		
1930716	Sabre	0455		
1930718	Sagem	0820		
1930722	Salora	0108		
1930724	Samsung	0421	0853	
1930731	SAT	0351	0321	0501
1930740	Sat Partner	0421	0520	0613
1931450	Sat Plus	0157		
1930732	Sat Team	0713		
1930734	Satcom	0605	0607	
1930735	Satec	0713		
1931057	Satelco	0369		
1930738	Satline	0628		
1931058	Schacke	0613		
1930746	Schneider	0805	0710	

1930747	Schwaiger	0605	0732	0157
		0607	0885	0692
		0115		
1931442	SCS			
1930751	Sedea			
	Electronique	0421		
1930752	Seemann	0396	0243	0515
1930753	SEG	0421	0369	0605
		0742	0114	
1930756	Seleco	0871		
1931141	Servi Sat	0136		
1930773	Siemens	0173		
1930785	Skantin	0713		
1931205	Skinsat	0501		
1930787	SKR	0713		
1931298	Sky	0856	0887	0847
1930789	Skymaster	0288	0605	0628
		0713	0880	0157
1930790	Skymax	0200		
1931206	SkySat	0157	0605	
1930794	SL	0692	0132	0742
		0243		
1931207	Smart	0132		
1930805	Sony	0847	0455	0853
1931443	Starland	0713		
1930824	Strong	0421	0613	0369
		0520	0879	0853
1930826	STVI	0136		
1930827	Sumida	0243		
1930829	Sunny Sound	0369		
1930830	Sunsat	0713		
1930831	Sunstar	0243	0369	0794
		0132		
1930851	Tantec	0455		
1930853	Tatung	0455		
1930859	TechniSat	0501	0548	0200
1930860	Technowelt	0607		
1930862	Teco	0243		
1930863	Telasat	0605	0115	0607
1930868	Teleciel	0613		
1930869	Telecom	0713		
1930872	Telefunken	0421	0710	
1930875	Teleka	0243	0613	0396
		0750	0692	0501
		0607		
1930876	Telemaster	0520		
1930880	Telesat	0605	0607	
1930883	Telesat	0501		
1930884	Teletech	0880	0114	
1930886	Televes	0455	0501	
1930895	Thomson	0455	0713	0853
		0115	0607	0820
		0668	0710	1046
1930897	Thorn	0455		
1930898	Tioko	0243		
1930900	Tokai	0200		
1930903	Tonna	0455	0668	0501
		0713		
1930905	Toshiba	0455	0137	
1930992	TPS	0820		
1930911	Triad	0351	0321	0372
1930912	Triasat	0501		
1931061	Triax	0501	0115	0200
		0396	0713	0853

1932019	UEC	0879	
1930923	Unisat	0243	0200
1930929	Universum	0173	0571 0607
		0115	0742
1930932	Variosat	0173	
1930936	Ventana	0200	
1930937	Vestel	0742	
1932036	Videocrypt	0711	1014
1930952	Visiosat	0351	0690 0713
1930956	Vortec	0421	
1930931	VTech	0351	0321 0690
		0818	
1930962	Wela	0713	0794 0132
1931091	Wetekom	0829	0157 0605
		0501	
1930966	Wewa	0455	
1931217	Wibo	0243	
1931062	Wintergarten	0288	
1930969	Wisi	0638	0173 0321
		0372	0690 0396
		0455	0351 0501
		0607	
1930971	Woorisat	0520	
1932113	Worldsat	0668	0710
1931151	XCOM	0832	
1930976	Xrypton	0369	
1930993	XSat	0832	0668 0713
1932070	Zaunkonig	0692	
1930986	Zehnder	0321	0520 0369
		0818	0742 0114
		0115	
1930987	Zenith	0856	
1931064	Zeta		
	Technology	0200	
1930989	Zodiac	0613	
1930990	Zwergnase	0794	0243

Cable Converters

Kabelsignalumwandler

Décodeurs de câble

1930025	Alcatel	0896	0897
1931155	Austar	0276	
1931531	BT	0105	
1930141	Cabletime	0448	0665
1931564	Comcrypt	0443	
1931641	Filmnet	0443	
1930996	France		
	Telecom	0451	0817
1931076	General		
	Instruments	0276	
1930421	Jerrold	0003	0276
1931341	Kabelvision	0003	
1930489	Macab	0817	
1931782	MNet	0443	
1932098	Mr Zapp	0817	
1932072	NTL Cabletell	0276	
1931447	Optus	0276	
1930612	Pace	1068	

1930636	Philips	0451	0817
1931065	PVP		
	Stereo Visual	0003	
1930718	Sagem	0817	
1930748	Scientific		
	Atlanta	0277	
1930864	Tele+1	0443	
1930879	Telepiu	0443	
1930917	Tudi	0286	
1930925	United Cable	0003	
1930945	Videoway	0250	
1930951	Visiopass	0451	0817
1932055	Westminster	0105	

Video Accessories

1961092	D-box	0804	
1960416	ITT Nokia	0804	
1960580	Nokia	0804	
1961056	Premiere	0804	

CD / Mini Disc

1940019	Aiwa	0124	
1940024	Alba	0615	
1941093	Alto	0625	
1940054	Arcam	0157	
1941228	Audio Research	0157	
1941097	Audiolab	0157	
1941229	Audiomeca	0157	
1940081	Audioton	0157	
1942091	BAT	0157	
1940139	Bush	0615	
1940142	California		
	Audio Lab	0029	
1941157	Cambridge		
	Audio	0625	0157
1941232	Craig	0615	
1940204	Cyrus	0157	
1940217	Denon	0003	
1941234	DKK	0000	
1940249	Eclipse	0625	
1940299	Fidelity	0625	
1941237	Gemini	0625	
1940339	Genexxa	0000	0037 0032
1941438	Goldmund	0157	
1940349	Goodmans	0625	0615
1940355	Grundig	0157	
1940366	Harman/		
	Kardon	0173	0157
1940370	HCM	0625	
1940378	Hiro	0625	
1940425	JVC	0072	
1940434	Kenwood	0037	0028
1941115	Krell	0157	
1942096	Lansay	0625	
1940466	Linn	0157	
1940500	Marantz	0157	
1940508	Matsui	0157	

1941242	MCS	0029
1940520	Memorex	0032
1940523	Meridian	0157
1940528	Micromega	0157
1940534	Mission	0157
1940543	MTC	0625
1940553	NAD	0000
1940557	Naim	0157
1940585	NSM	0157
1940620	Panasonic	0029 0303
1940636	Philips	0157 0626
1940642	Pioneer	0032
1940667	Proton	0157
1940674	QED	0157
1940675	Quad	0157
1940686	Radiotone	0615 0625
1940698	Revox	0157
1940707	Rotel	0157
1940717	SAE	0157
1940727	Sansui	0157 0625
1940746	Schneider	0615
1940762	Sharp	0037 0861
1940773	Siemens	0157
1940805	Sony	0000 0490
1940838	SuperTech	0625
1941211	Synergy	0625
1940850	Tandy	0032
1940854	Teac	0625
1940857	Technics	0029 0303
1940896	Thorens	0157
1941227	Thule	0157
1940929	Universum	0157
1940939	Victor	0072
1940959	Watson	0615
1940977	Yamaha	0036
1940987	Zenith	0615

Phono

1970355	Grundig	0188
1970500	Marantz	0188
1970636	Philips	0188
1970929	Universum	0188

Home Automation

Heimgebrauch

Domotique

1961958	Superswitch	0451
1960593	X-10 home automation	0167

Amplifiers

Audio-Verstärker

Amplificateur

1950019	Aiwa	0406 0010 0159
		0404
1952091	BAT	0269
1950139	Bush	0269 0421
1950217	Denon	0160
1951438	Goldmund	0269
1950349	Goodmans	0421
1950355	Grundig	0269 0847
1960425	JVC	0073
1950466	Linn	0269
1950500	Marantz	0321 0269
1950504	Mark	0269
1950523	Meridian	0269
1950528	Micromega	0269
1950557	Naim	0269
1950620	Panasonic	0308
1950636	Philips	0269
1950642	Pioneer	0013 0269
1950675	Quad	0269
1950701	Roadstar	0847
1950727	Sansui	0321
1960805	Sony	0159 0010
1950854	Teac	0421
1950857	Technics	0308
1950872	Telefunken	0847
1950896	Thorens	0269
1950929	Universum	0269
1950977	Yamaha	0143 0354

Amp/Tuners

Verstärker/Tuner

Ampl./Tuner Audio

1950019	Aiwa	0121 0405 0158
1950020	Akai	0115
1950054	Arcam	0189
1950123	Brandt	0824
1951157	Cambridge Audio	0189
1950153	Carver	0360
1950217	Denon	0004
1950305	Fisher	0360
1951438	Goldmund	0189
1950355	Grundig	1189 0189 0219
1950366	Harman/Kardon	0110 0189
1950399	Inkel	0027 0491
1951078	JBL	0110
1950425	JVC	0074 0464
1950434	Kenwood	0027 0313 0314
1950466	Linn	0189
1950500	Marantz	1189 0189 0219
1950528	Micromega	0189
1950553	NAD	0320
1950594	Onkyo	0135

1950620	Panasonic	0309	0518	0763
1950636	Philips	1189	0189	
1950642	Pioneer	0080	0289	
1950698	Revox	0189		
1950715	Saba	0824		
1950727	Sansui	0189		
1950729	Sanyo	0360	0219	
1950746	Schneider	0110		
1950762	Sharp	0262		
1950764	Sherwood	0491		
1950805	Sony	0158	1042	
1950854	Teac	0110		
1950857	Technics	0309	0518	0763
1950872	Telefunken	0824		
1950895	Thomson	0824		
1950896	Thorens	0189		
1950929	Universum	0189		
1950939	Victor	0074		
1950977	Yamaha	0176		

Cassette Players

Audio Cassetten Deck

Lecteurs Cassette

1980355	Grundig	0029		
1980366	Harman/ Kardon	0029		
1980492	Magnavox	0029		
1980500	Marantz	0029		
1980620	Panasonic	0229		
1980636	Philips	0029	0229	
1980698	Revox	0029		
1980727	Sansui	0029		
1980805	Sony	0170	0243	
1980857	Technics	0229		
1980896	Thorens	0029		
1980929	Universum	0029		

Laser Disc

1980153	Carver	0194		
1980217	Denon	0059		
1980355	Grundig	0059		
1980366	Harman/ Kardon	0194		
1980492	Magnavox	0194		
1980500	Marantz	0194		
1980535	Mitsubishi	0059		
1980553	NAD	0059		
1980636	Philips	0194		
1980642	Pioneer	0059		
1980872	Telefunken	0059		
1980893	Theta Digital	0194		

DAT

1980355	Grundig	0158		
1980366	Harman/ Kardon	0158		
1980500	Marantz	0158		
1980636	Philips	0158		
1980857	Technics	0158		

DVD

1982085	3DLAB	0539		
1980217	Denon	0490		
1982092	Denzel	0665		
1980222	Diamond	0651		
1980347	GoldStar	0591		
1980355	Grundig	0539		
1980381	Hitachi	0665		
1980434	Kenwood	0490		
1981072	LG	0591		
1980492	Magnavox	0503		
1980500	Marantz	0539		
1980508	Matsui	0651		
1980528	Micromega	0539		
1980594	Onkyo	0503		
1980598	Optimus	0525		
1980603	Oritron	0651		
1980620	Panasonic	0490		
1980636	Philips	0539	0503	
1980642	Pioneer	0525	0571	
1980662	Proline	0652		
1981865	Raito	0665		
1980724	Samsung	0573		
1980753	SEG	0665		
1980805	Sony	0533		
1980857	Technics	0490		
1980900	Tokai	0665		
1980905	Toshiba	0503		
1980929	Universum	0591		
1980977	Yamaha	0490		
1982067	Yamakawa	0665		
1980987	Zenith	0503	0591	

