



Intel Product Resource Guide

Q4 2013



TABLE OF CONTENTS

Intel® Cache Acceleration Software

Intel® Cache Acceleration Software...3

Solid-State Drives

Solid-State Drives4

Intel® Storage Processors

Intel® Storage Processors6

Networking Products

Adapters7

Controllers8

Desktop Products

Processors & Chipsets 10

Boards..... 14

Chipset Compatibility 15

Mobile Products

Processors & Chipsets 16

Server Products

Processors & Chipsets23

Boards.....29

Systems31

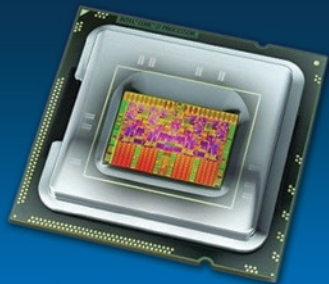
Chassis.....34

Accessories35

RAID37

Embedded Products

Processors.....39



Reliable solutions, from trusted partners

Intel® and its ecosystem of hardware and software providers, including members of the Intel® Embedded and Communications Alliance (Intel® ECA), offer embedded solutions at all levels of integration to meet an array of performance, functionality and cost requirements. With Intel, embedded developers have a single vendor that offers multiple architectures, product lines, price points and feature sets.

Avnet is one of the largest value-added distributors of Intel boards, processors and systems to the electronic original equipment manufacturer (EOEM) and independent software vendor (ISV) markets. With Avnet, embedded developers have access to expert engineering, platform development, integration and post-sales support.

Together, Avnet and Intel leverage our collective resources and positions as market leaders to deliver advanced computing and platform technologies as well as extended support for long-life embedded product life cycles, all in one cohesive solution.

Embedded Products Legend

Architecture	Launch	Process	Instructions							
			MMX	SSE	SSE2	SSE3	SSSE3	SSE4.1	SSE4.2	AVX
Northwood	2002	130 nm	•	•	•					
Prescott	2004	90 nm	•	•	•	•				
Cedar Mill	2006	65 nm	•	•	•	•				
Sossaman	2006	65 nm	•	•	•	•				
Yonah	2006	65 nm	•	•	•	•				
Merom	2006	65 nm	•	•	•	•	•			
Merom (Napa)	2006	65 nm	•	•	•	•	•			
Conroe	2006	65 nm	•	•	•	•	•			
Woodcrest	2006	65 nm	•	•	•	•	•			
Clovertown	2006	65 nm	•	•	•	•	•			
Merom (Santa Rosa)	2007	65 nm	•	•	•	•	•	•		
Allendale	2007	65 nm	•	•	•	•	•	•		
Conroe-L	2007	65 nm	•	•	•	•	•	•		
Silverthorne	2008	45 nm	•	•	•	•	•	•		
Diamondville	2008	45 nm	•	•	•	•	•	•		
Wolfdale	2008	45 nm	•	•	•	•	•	•	•	
Wolfdale-DP	2008	45 nm	•	•	•	•	•	•	•	
Yorkfield	2008	45 nm	•	•	•	•	•	•	•	
Harpertown	2008	45 nm	•	•	•	•	•	•	•	
Penryn	2008	45 nm	•	•	•	•	•	•	•	
Nehalem	2008	45 nm	•	•	•	•	•	•	•	•
Silverthorne-XL	2009	45 nm	•	•	•	•	•	•		
Pineview	2009	45 nm	•	•	•	•	•	•		
Tunnel Creek	2010	45 nm	•	•	•	•	•	•		
Westmere	2009	32 nm	•	•	•	•	•	•	•	•
Sandy Bridge	2011	32 nm	•	•	•	•	•	•	•	•

Processor Legend

Heading	Advanced Technology
Turbo	Intel® Turbo Boost Technology [Speed Throttling Per Core]
vPro	Intel® vPro Technology [Multi-Threading Per CPU]
HT	Intel® Hyper-Threading Technology
VT-x	Intel® Virtualization Technology (VT-x) [Multiple Environments]
VT-d	Intel® Virtualization Technology for Directed I/O (VT-d) [Multiple Environments]
TXT	Intel® Trusted Execution Technology [Hardware-based security]
AES	AES New Instructions
64	Intel® 64 [Supports 64-bit computing]
Anti	Intel® Anti-Theft Technology
WiFi	Intel® My WiFi Technology
4G	4G WiMAX Wireless Technology
IS	Idle States
EIST	Enhanced Intel SpeedStep Technology [Power conservation]
DBS	Intel® Demand Based Switching
TMT	Thermal Monitoring Technologies
Fast	Intel® Fast Memory Access
Flex	Intel® Flex Memory Access
XDB	Execute Disable Bit [Hardware-based security]
AVX	Advanced Vector Extension [Faster Data Processing]

Abbr.	Networking Specifications
MSI	Message Signal Interrupt
VT-c	Intel® Virtualization Technology for Connectivity
NCSI	NC Sideband Interface
RSS	Receive Side Scaling
FCoE	Fiber Channel over Ethernet
vPro	Supported Under vPro
MACsec	MACsec IEEE 802.1 AE
JFS	Jumbo Frames Supported
TSPI	Time Sync Protocol Indicator
IEEE	IEEE 1588
iWARP	iWARP/RDMA
IEPM	Intel® Ethernet Power Management
DDIO	Intel® Data Direct I/O Technology
IntOff	Intelligent Offloads
10000BT	1000Base-T

Notes

Due to potential changes in products, BIOS, software, and the like, please refer to ark.intel.com for the latest processor/chipset compatibility. Embedded processors and chipsets have a 7+ year life cycle.

Desktop Motherboards Notes:

- Corner Field DG41CN has a 2-year warranty

Server Motherboards Notes:

- Shady Cove board includes Intel 7.1 audio controller & FireWire 800
- Willowbrook S5500WB (SSI version) is designed for “off-the-shelf” multi-rail power supplies
- Willowbrook S5500Wb12V is designed for single rail power supplies
- Order S5520HCT for Hanlan Creek (12 slot version) with TPM Module & TXT Support
- Order S5520URT for Urbanna with TPM Module & TXT Support

Server Platforms Notes:

- For maximum memory bandwidth in 5520 & 5500 based systems, Intel recommends populating memory in increments of six dimms
- Order BXSTS100P for heatsink on Bluff Creek Platform 2U Platforms include heatsinks
- Snow Hill, Thunder Hill, Willowbrook and Urbanna 2U Platforms include heatsinks
- Urbanna/Petrof Bay T platforms include a mini control panel
- Order SR2625URLXTNA for TPM Module & TXT Support
- Two passive heatsinks (BXSTS100P) included with MFS5520VI

Intel® Cache Acceleration Software

Intel® Cache Acceleration Software combined with Intel® Data Center Family SSDs is an industry unique solution that delivers application specific performance on physical servers and virtual machines via Selective Optimized Caching.

Application performance is being held back by storage speeds.

Today's multi-core, multi-CPU servers are held back by storage I/O that cannot keep up with ever-increasing demand, preventing systems from reaching their full performance potential. Traditional solutions of adding more storage, servers, or memory, adds huge expense, as well as management complexity.

Intel has the answer – software that installs on the server and uses fast SSD/Flash media to cache “hot” data, eliminating I/O latency and driving targeted application performance from back-end storage via intelligent caching, not extreme spending.

Product	Platform	Part #
INTEL® CACHE ACCELERATION SOFTWARE		
Intel® Cache Acceleration Software for Windows* for up to 400 GB of Target Cache	Windows	CAS999WLDE05000
Standard Support for Intel® CAS for Windows* for up to 400 GB of Target Cache (5 x 8 EST)	Windows	CAS999WSDE050BS
Premium Support for Intel® CAS for Windows* for up to 400 GB of Target Cache (7 x 24, incl. Holidays)	Windows	CAS999WSDE050PS
Intel® Cache Acceleration Software for Windows* for up to 800 GB of Target Cache	Windows	CAS999WLDE01000
Standard Support for Intel® CAS for Windows* for up to 800 GB of Target Cache (5 x 8 EST)	Windows	CAS999WSDE010BS
Premium Support for Intel® CAS for Windows* for up to 800 GB of Target Cache (7 x 24, incl. Holidays)	Windows	CAS999WSDE010PS
Intel® Cache Acceleration Software for Linux* Annual Subscription for up to 800 GB of Target Cache, incl. 1 year Standard Support (5 x 8 EST)	Linux	CAS999LSDE010BS
Intel® Cache Acceleration Software for Linux* Annual Subscription for up to 800 GB of Target Cache, incl. 1 year Premium Support (7 x 24, incl. Holidays)	Linux	CAS999LSDE010PS

Intel® Cache Acceleration Software:

- Installs into the Windows* or Linux* Server OS, both as a physical server and running virtually under VMware*, KVM, Citrix XenServer*, or Windows Hyper-V,* including support for VMotion and/or Live Migration while maintaining a hot cache.
- Proactively optimizes the system cache for Highly-Targeted I/O Acceleration.
- Offloads I/O from primary storage to local high-performance media, allowing storage to be used for capacity, not over-provisioned for performance.
- Available for a Free 30 day trial.

Intel® Solid State Drives

Intel® SSD 300 & 500 Series

Capacity	Launch	Code Name	Flash Memory	Form Factor	Interface	Sequential Read	Sequential Write	Lithography	Single OEM Part #	Retail 5 Pack	OEM Bulk Pack
310 SERIES (3-YEAR WARRANTY)											
40 GB	Q1'11	Soda Creek	SLC	mSATA	SATA - 3 Gb/s	170 MB/s	35 MB/s	34 nm	SSDMAEMC040G2C1		
80 GB	Q1'11	Soda Creek	SLC	mSATA	SATA - 3 Gb/s	200 MB/s	70 MB/s	34 nm	SSDMAEMC080G2C1		
313 SERIES (3-YEAR WARRANTY)											
20 GB	Q1'12	Hawley Creek	SLC	7.0 mm / 2.5"	SATAII - 3 Gb/s	220 MB/s	100 MB/s	25 nm	SSDSA2VP020G301		
20 GB	Q1'12	Hawley Creek	SLC	mSATA	SATAII - 3 Gb/s	220 MB/s	100 MB/s	25 nm	SSDMAEXC020G301		
24 GB	Q1'12	Hawley Creek	SLC	7.0 mm / 2.5"	SATAII - 3 Gb/s	220 MB/s	100 MB/s	25 nm	SSDSA2VP024G301		SSDSA2UP024G3HP
24 GB	Q1'12	Hawley Creek	SLC	mSATA	SATAII - 3 Gb/s	220 MB/s	100 MB/s	25 nm	SSDMAEXC024G301		
320 SERIES (ON ALLOCATION - TO BE REPLACED BY S3500 SERIES LAUNCHING MAY 2013)											
40 GB	Q1'11	Postville Refresh	MLC	9.5 mm / 2.5"	SATA - 3 Gb/s	200 MB/s	45 MB/s	25 nm	SSDSA2CT040G301	SSDSA2CT040G3B5	SSDSA2CT040G310
40 GB	Q1'11	Postville Refresh	MLC	7.0 mm / 2.5"	SATA - 3 Gb/s	200 MB/s	45 MB/s	25 nm	SSDSA2BT040G301		SSDSA2BT040G3
80 GB	Q1'11	Postville Refresh	MLC	9.5 mm / 2.5"	SATA - 3 Gb/s	270 MB/s	90 MB/s	25 nm	SSDSA2CW080G301	SSDSA2CW080G3B5	SSDSA2CW080G310
80 GB	Q1'11	Postville Refresh	MLC	7.0 mm / 2.5"	SATA - 3 Gb/s	270 MB/s	90 MB/s	25 nm	SSDSA2BW080G301		SSDSA2BW080G3
80 GB	Q1'11	Postville Refresh	MLC	1.8"	microSATA - 3 Gb/s	270 MB/s	90 MB/s	25 nm	SSDSA1NW080G301		
120 GB	Q1'11	Postville Refresh	MLC	9.5 mm / 2.5"	SATA - 3 Gb/s	270 MB/s	130 MB/s	25 nm	SSDSA2CW120G301	SSDSA2CW120G3B5	SSDSA2CW120G310
120 GB	Q1'11	Postville Refresh	MLC	7.0 mm / 2.5"	SATA - 3 Gb/s	270 MB/s	130 MB/s	25 nm	SSDSA2BW120G301		SSDSA2BW120G3
160 GB	Q1'11	Postville Refresh	MLC	9.5 mm / 2.5"	SATA - 3 Gb/s	270 MB/s	165 MB/s	25 nm	SSDSA2CW160G301	SSDSA2CW160G3B5	SSDSA2CW160G310
160 GB	Q1'11	Postville Refresh	MLC	7.0 mm / 2.5"	SATA - 3 Gb/s	270 MB/s	165 MB/s	25 nm	SSDSA2BW160G301		SSDSA2BW160G3
160 GB	Q1'11	Postville Refresh	MLC	1.8"	microSATA - 3 Gb/s	270 MB/s	130 MB/s	25 nm	SSDSA1NW160G301		
300 GB	Q1'11	Postville Refresh	MLC	9.5 mm / 2.5"	SATA - 3 Gb/s	270 MB/s	205 MB/s	25 nm	SSDSA2CW300G301	SSDSA2CW300G3B5	SSDSA2CW300G310
300 GB	Q1'11	Postville Refresh	MLC	7.0 mm / 2.5"	SATA - 3 Gb/s	270 MB/s	205 MB/s	25 nm	SSDSA2BW300G301		SSDSA2BW300G3
300 GB	Q2'11	Postville Refresh	MLC	1.8"	mSATA - 3 Gb/s	270 MB/s	130 MB/s	25 nm	SSDSA1NW300G301		
600 GB	Q1'11	Postville Refresh	MLC	9.5 mm / 2.5"	SATA - 3 Gb/s	270 MB/s	220 MB/s	25 nm	SSDSA2CW600G301	SSDSA2CW600G3B5	SSDSA2CW600G310
600 GB	Q1'11	Postville Refresh	MLC	7.0 mm / 2.5"	SATA - 3 Gb/s	270 MB/s	220 MB/s	25 nm	SSDSA2BW600G301		
330 SERIES (3-YEAR WARRANTY)											
60 GB	Q2'12	Maple Crest	MLC	2.5"	SATA - 6 Gb/s	500 MB/s	400 MB/s	25 nm		SSDSC2CT060A3K5	
120 GB	Q2'12	Maple Crest	MLC	2.5"	SATA - 6 Gb/s	500 MB/s	450 MB/s	25 nm		SSDSC2CT120A3K5	
180 GB	Q2'12	Maple Crest	MLC	2.5"	SATA - 6 Gb/s	500 MB/s	450 MB/s	25 nm		SSDSC2CT180A3K5	
240 GB	Q2'12	Maple Crest	MLC	2.5"	SATA - 6 Gb/s	500 MB/s	450 MB/s	25 nm		SSDSC2CT240A3K5	
335 SERIES (3-YEAR WARRANTY)											
240 GB	Q4'12	Jay Crest	MLC	2.5"	SATA - 6 Gb/s	500 MB/s	400 MB/s	25 nm		SSDSC2CT240A4K5	
520 SERIES											
60 GB	Q1'12	Cherryville	MLC	9.5 mm / 2.5"	SATA3 - 6 Gb/s	550 MB/s	500 MB/s	25 nm			SSDSC2CW060A310
120 GB	Q1'12	Cherryville	MLC	9.5 mm / 2.5"	SATA3 - 6 Gb/s	550 MB/s	500 MB/s	25 nm		SSDSC2CW120A3B5	SSDSC2CW120A310
120 GB	Q2'12	Cherryville	MLC	7.0 mm / 2.5"	SATA - 3 Gb/s	550 MB/s	500 MB/s	25 nm	SSDSA2BW120A301		
180 GB	Q1'12	Cherryville	MLC	9.5 mm / 2.5"	SATA3 - 6 Gb/s	550 MB/s	500 MB/s	25 nm	SSDSC2CW180A301	SSDSC2CW180A3K5	SSDSC2BW180A3HP
180 GB	Q2'12	Cherryville	MLC	7.0 mm / 2.5"	SATA - 3 Gb/s	550 MB/s	500 MB/s	25 nm	SSDSC2BW180A301		
240 GB	Q1'12	Cherryville	MLC	9.5 mm / 2.5"	SATA3 - 6 Gb/s	550 MB/s	500 MB/s	25 nm	SSDSC2CW240A310	SSDSC2CW240A3K5	
240 GB	Q1'12	Cherryville	MLC	7.0 mm / 2.5"	SATA3 - 6 Gb/s	550 MB/s	500 MB/s	25 nm	SSDSC2BW240A301		SSDSC2BW240A3HP
480 GB	Q1'12	Cherryville	MLC	9.5 mm / 2.5"	SATA3 - 6 Gb/s	550 MB/s	500 MB/s	25 nm	SSDSC2CW480A310	SSDSC2CW480A3K5	
525 SERIES											
30 GB	Q1'13	Lincoln Crest	MLC	mSATA	mSATA - 6 Gb/s	500 MB/s	275 MB/s	25 nm	SSDMCEAC030B301		SSDMCEAC030B3
60 GB	Q1'13	Lincoln Crest	MLC	mSATA	mSATA - 6 Gb/s	550 MB/s	475 MB/s	25 nm	SSDMCEAC060B301		SSDMCEAC060B3
120 GB	Q1'13	Lincoln Crest	MLC	mSATA	mSATA - 6 Gb/s	550 MB/s	500 MB/s	25 nm	SSDMCEAC120B301		SSDMCEAC120B3
180 GB	Q1'13	Lincoln Crest	MLC	mSATA	mSATA - 6 Gb/s	550 MB/s	520 MB/s	25 nm	SSDMCEAC180B301		SSDMCEAC180B3
240 GB	Q1'13	Lincoln Crest	MLC	mSATA	mSATA - 6 Gb/s	550 MB/s	520 MB/s	25 nm	SSDMCEAC240B301		SSDMCEAC240B3
530 SERIES											
80 GB	Q3'13	Dale Crest	MLC	80 mm / M.2	SATA - 6 Gb/s	540 MB/s	490 MB/s		SSDCKGF080A4ES		SSDCKGW080A4
80 GB	Q3'13	Dale Crest	MLC	mSATA	mSATA - 6 Gb/s	540 MB/s	480 MB/s		SSDMCEAF080A4ES		SSDMCEAW080A4
180 GB	Q3'13	Dale Crest	MLC	mSATA	mSATA - 6 Gb/s	540 MB/s	480 MB/s		SSDMCEAF180A4ES		SSDMCEAW180A4
180 GB	Q3'13	Dale Crest	MLC	80 mm / M.2	SATA - 6 Gb/s	540 MB/s	480 MB/s		SSDCKGF180A4ES		SSDCKGW180A4
180 GB	Q3'13	Dale Crest	MLC	2.5"	SATA - 6 Gb/s	540 MB/s	480 MB/s		SSDSC2BW180A4ES	SSDSC2BW180A4K5	SSDSC2BW180A4
240 GB	Q3'13	Dale Crest	MLC	mSATA	mSATA - 6 Gb/s	540 MB/s	480 MB/s		SSDMCEAF240A4ES		SSDMCEAW240A4
240 GB	Q3'13	Dale Crest	MLC	80 mm / M.2	SATA - 6 Gb/s	540 MB/s	480 MB/s		SSDSC2BW240A4ES	SSDSC2BW240A4K5	SSDSC2BW240A4
360 GB	Q3'13	Dale Crest	MLC	80 mm / M.2	SATA - 6 Gb/s	540 MB/s	490 MB/s		SSDCKHW360A4ES		

Intel® Solid State Drives

Intel® SSD 700, 900, 1500 & 3000 Series

Capacity	Launch	Code Name	Flash Memory	Form Factor	Interface	Sequential Read	Sequential Write	Lithography	Single OEM Part #	OEM Bulk Pack
710 SERIES										
100 GB	Q3'11	Lyndonville	MLC	2.5"	SATA - 3 Gb/s	270 MB/s	170 MB/s	25 nm	SSDSA2BZ100G301	SSDSA2BZ100G3
200 GB	Q3'11	Lyndonville	MLC	2.5"	SATA - 3 Gb/s	270 MB/s	210 MB/s	25 nm	SSDSA2BZ200G301	SSDSA2BZ200G3
300 GB	Q3'11	Lyndonville	MLC	2.5"	SATA - 3 Gb/s	270 MB/s	210 MB/s	25 nm	SSDSA2BZ300G301	SSDSA2BZ300G3
711 SERIES										
32 GB		Postville	SLC	7.0 mm / 2.5"	SATA - 3 Gb/s			34 nm	SSDSA2SH032G201	SSDSA2SH032G2
64 GB		Postville	SLC	7.0 mm / 2.5"	SATA - 3 Gb/s			34 nm	SSDSA2SH064G201	SSDSA2SH064G2
910 SERIES (5-YEAR WARRANTY)										
400 GB	Q2'12	Ramsdale	MLC	1/2 Height PCIe	PCIe Gen2 x8	1000 MB/s	750 MB/s	25 nm	SSDPEDOX400G301	
800 GB	Q2'12	Ramsdale	MLC	1/2 Height PCIe	PCIe Gen2 x8	2000 MB/s	1000 MB/s	25 nm	SSDPEDPX800G301	
S3500 SERIES										
80 GB	Q2'13	Wolfsville	MLC	2.5"	SATA - 6 Gb/s	340 MB/s	100 MB/s	20 nm	SSDSC2BB080G401	SSDSC2BB080G4
80 GB	Q2'13	Wolfsville	MLC	1.8"	SATA - 6 Gb/s	340 MB/s	100 MB/s	20 nm	SSDSC1NB080G401	SSDSC1NB080G4
120 GB	Q2'13	Wolfsville	MLC	2.5"	SATA - 6 Gb/s	445 MB/s	135 MB/s	20 nm	SSDSC2BB120G401	SSDSC2BB120G4
160 GB	Q2'13	Wolfsville	MLC	2.5"	SATA - 6 Gb/s	475 MB/s	175 MB/s	20 nm	SSDSC2BB160G401	SSDSC2BB160G4
240 GB	Q2'13	Wolfsville	MLC	2.5"	SATA - 6 Gb/s	500 MB/s	260 MB/s	20 nm	SSDSC2BB240G401	SSDSC2BB240G4
240 GB	Q2'13	Wolfsville	MLC	1.8"	SATA - 6 Gb/s	500 MB/s	260 MB/s	20 nm	SSDSC1NB240G401	SSDSC1NB240G4
300 GB	Q2'13	Wolfsville	MLC	2.5"	SATA - 6 Gb/s	500 MB/s	315 MB/s	20 nm	SSDSC2BB300G401	SSDSC2BB300G4
400 GB	Q2'13	Wolfsville	MLC	1.8"	SATA - 6 Gb/s	500 MB/s	380 MB/s	20 nm	SSDSC1NB400G4ES	SSDSC1NB400G4
480 GB	Q2'13	Wolfsville	MLC	2.5"	SATA - 6 Gb/s	500 MB/s	410 MB/s	20 nm	SSDSC2BB480G4ES	SSDSC2BB480G4
800 GB	Q2'13	Wolfsville	MLC	2.5"	SATA - 6 Gb/s	500 MB/s	450 MB/s	20 nm	SSDSC2BB800G4ES	SSDSC2BB800G4
S3700 SERIES										
100 GB	Q4'12	Taylorville	MLC	2.5"	SATA3 - 6 Gb/s	500 MB/s	200 MB/s	25 nm	SSDSC2BA100G301	
200 GB	Q4'12	Taylorville	MLC	2.5"	SATA3 - 6 Gb/s	500 MB/s	365 MB/s	25 nm	SSDSC2BA200G301	
400 GB	Q4'12	Taylorville	MLC	2.5"	SATA3 - 6 Gb/s	500 MB/s	460 MB/s	25 nm	SSDSC2BA400G301	
800 GB	Q4'12	Taylorville	MLC	2.5"	SATA3 - 6 Gb/s	500 MB/s	460 MB/s	25 nm	SSDSC2BA800G301	
PRO 1500 SERIES (5-YEAR WARRANTY)										
80 GB	Q3'13	Sierra Star	MLC	80 mm / M.2	SATA - 6 Gb/s	540 MB/s	480 MB/s	20 nm	TBD	
120 GB	Q3'13	Sierra Star	MLC	2.5"	SATA - 6 Gb/s			20 nm	TBD	
180 GB	Q3'13	Sierra Star	MLC	2.5"	SATA - 6 Gb/s			20 nm	SSDSC2BF180A4ES	
180 GB	Q3'13	Sierra Star	MLC	80 mm / M.2	SATA - 6 Gb/s			20 nm	TBD	
240 GB	Q3'13	Sierra Star	MLC	2.5"	SATA - 6 Gb/s			20 nm	TBD	
360 GB	Q3'13	Sierra Star	MLC	80 mm / M.2	SATA - 6 Gb/s			20 nm	TBD	

Intel® Storage Processors

Intel® Atom™ C1200 & C2000

Processor Number	Code Name	Release	Cores / Threads	Clock Speed	Cache	Lithography	Max TDP	Embedded Option	# PCIe Lanes	Turbo	HT	VT-x	AES	IS	# USB Ports	# SATA Ports	Max SATA 6.0 Gb/s Ports	UART	Socket	OEM Tray Part #
INTEL® ATOM™ S1200 FAMILY																				
S1289	Briarwood	Q2'13	2 / 4	2.00 GHz	1 MB	32 nm	14.1 W	No	40		+	+						+	FCBGA1283	DH80S1289
S1279	Briarwood	Q2'13	2 / 4	1.60 GHz	1 MB	32 nm	13.1 W	No	40		+	+						+	FCBGA1283	DH80S1279
S1269	Briarwood	Q2'13	2 / 4	1.60 GHz	1 MB	32 nm	11.7 W	No	32		+	+						+	FCBGA1283	DH80S1269
INTEL® ATOM™ PROCESSOR C2000 FAMILY																				
C2758	Rangeley	Q3'13	8 / 8	2.40 GHz	4 MB	22 nm	20 W	Yes	16			+	+	+	4	6	2	2	FCBGA1283	FH8065501516702
C2738	Rangeley	Q3'13	8 / 8	2.40 GHz	4 MB	22 nm	20 W	Yes	16			+	+	+	4	6	2	2	FCBGA1283	FH8065501516763
C2718	Rangeley	Q3'13	8 / 8	2.00 GHz	4 MB	22 nm	18 W	Yes	16			+	+	+	4	6	2	2	FCBGA1283	FH8065501516708
C2558	Rangeley	Q3'13	4 / 4	2.40 GHz	4 MB	22 nm	15 W	Yes	16			+	+	+	4	6	2	2	FCBGA1283	FH8065501516709
C2538	Rangeley	Q3'13	4 / 4	2.40 GHz	2 MB	22 nm	15 W	Yes	16			+	+	+	4	6	2	2	FCBGA1283	FH8065501516762
C2518	Rangeley	Q3'13	4 / 4	1.70 GHz	2 MB	22 nm	13 W	Yes	16			+	+	+	4	6	2	2	FCBGA1283	FH8065501516710
C2358	Rangeley	Q3'13	2 / 2	1.70 GHz	1 MB	22 nm	7 W	Yes	8	+		+	+	+	4	4	2	2		TBD
C2338	Rangeley	Q3'13	2 / 2	1.70 GHz	1 MB	22 nm	7 W	Yes	8	+		+	+	+	4	6	2	2	FCBGA1283	FH8065501516761

Intel® Networking Products

Intel® LAN Adapters

Product Name	Code Name	Release	Cable Medium	Bracket Height	Cabling Type	Embedded Option	Max TDP	# of Ports	Interface Type	OEM Part #	Retail Part #	Bulk Part #
INTEL® GIGABIT DESKTOP ADAPTER												
Intel® Gigabit CT Desktop Adapter	Shelter Island	Q3'08	Copper	Low Profile / Full Height	Category-5 up to 100 m	No	1.9 W	Single	PCIe v1.1 (2.5 GT/s)	E1G31CTG1P20	EXPI9301CT	EXP9301CTBLK
Intel® PRO/1000 GT Desktop Adapter	Stebbins 2	Q3'04	Copper	Low Profile / Full Height	Category-5 up to 100 m	No		Single	PCI	PWLA8391GTG1P20	PWLA8391GT	PWLA8391GTBLK
INTEL® 10 GIGABIT SERVER ADAPTERS												
Intel® Ethernet Server Bypass Adapter X520-SR2		Q2'13	Fiber	Low Profile / Full Height	MMF 62.5/50 µm, up to 300 m	No	6.9 W	Dual	PCIe v2.0 (5.0 GT/s)		X520SR2BP	X520SR2BPBLK
Intel® Ethernet Server Bypass Adapter X540-T2		Q2'13	Copper	Low Profile / Full Height	RJ-45 Category-6 up to 55 m; Category-6A up to 100 m	No	9.8 W	Dual	PCIe v2.1 (5 GT/s)		X540T2BP	X540T2BPBLK
Intel® Ethernet Converged Network Adapter X540-T1		Q3'12	Copper	Low Profile / Full Height	RJ-45 Category-6 up to 55 m; Category-6A up to 100 m	No		Single	PCIe v2.1 (5 GT/s)	X540T1G1P5	X540T1	
Intel® Ethernet Converged Network Adapter X540-T2	Twin Pond	Q1'12	Copper	Low Profile / Full Height	RJ-45 Category-6 up to 55 m; Category-6A up to 100 m	No	13.4 W	Dual	PCIe v2.1 (5 GT/s)	X540T2G1P5	X540T2	X540T2BLK
Intel® Ethernet Converged Network Adapter X520-T2	Iron Pond T2	Q3'10	Copper	Low Profile / Full Height	Category-6A up to 100 m	No	19 W	Dual	PCIe v2.0 (5.0 GT/s)	E10G42BTG1P5	E10G42BT	
Intel® 10 Gigabit AT2 Server Adapter	Copper Pond	Q3'09	Copper	Low Profile / Full Height	Category-6A up to 100 m	No	15.5 W	Single	PCIe v2.0 (2.5 GT/s)	E10G41AT2G1P5	E10G41AT2	
Intel® Ethernet Server Adapter X520-DA2	Spring Fountain	Q3'09	Copper	Low Profile / Full Height	SFP+ Direct Attached Twin Axial Cabling up to 10 m	No	8.6 W	Dual	PCIe v2.0 (5.0 GT/s)	E10G42BDAG1P5	E10G42BDTA	
Intel® Ethernet Server Adapter X520-LR1	Spring Fountain	Q3'09	Fiber	Low Profile / Full Height	SMF up to 10 km	No	8 W	Single	PCIe v2.0 (5.0 GT/s)		E10G41BFLR	
Intel® Ethernet Server Adapter X520-SR1	Spring Fountain	Q3'09	Fiber	Low Profile / Full Height	MMF up to 300 m	No	8 W	Single	PCIe v2.0 (5.0 GT/s)	E10G41BFSR1P5	E10G41BFSR	
Intel® Ethernet Server Adapter X520-SR2	Spring Fountain	Q3'09	Fiber	Low Profile / Full Height	MMF up to 300 m	No	10.7 W	Dual	PCIe v2.0 (5.0 GT/s)	E10G42BFSR1P5	E10G42BFSR	
NetEffect™ Ethernet Server Cluster Adapter CX4	Dover	Q2'09	Copper	Low Profile / Full Height	8 pair, 100 ohm Twinax up to 15 m	No	6.2 W	Single	PCIe v1.1 (2.5 GT/s)		E10G81GT2CX4	
NetEffect™ Ethernet Server Cluster Adapter DA		Q2'09	Copper	Low Profile / Full Height	SFP+ Direct Attach Twin Axial Cabling up to 10 m	No	8.5 W	Single	PCIe v1.1 (2.5 GT/s)		E10G81G2P	
NetEffect™ Ethernet Server Cluster Adapter SFP+ SR	Argus SR	Q2'09	Fiber	Low Profile / Full Height	MMF up to 300 m	No	9 W	Single	PCIe v1.1 (2.5 GT/s)		E10G81GF2SR	
Intel® 10 Gigabit AF DA Dual Port Server Adapter	Long Cove	Q2'08	Copper	Low Profile / Full Height	SFP+ Direct Attached Twin Axial Cabling up to 10 m	No	12.2 W	Dual	PCIe v2.0 (2.5 GT/s)	E10G42AFDAGP5	E10G42AFDA	
Intel® 10 Gigabit CX4 Dual Port Server Adapter	Cedar Cove	Q2'08	Copper	Low Profile / Full Height	8 pair, 100 ohm Twin Axial Cabling up to 15 m	No	4.9 W	Dual	PCIe	EXP9502CX4G1P5	EXP9502CX4	
INTEL® GIGABIT SERVER ADAPTERS												
Intel® Ethernet Server Adapter I250-T1		Q1'13	Copper			No	1 W	Single	RJ45	I210T1G1P20	I210T1	I210T1BLK
Intel® Ethernet Server Adapter I350-F2		Q4'11	Fiber	Low Profile / Full Height	MMF 50 µm up to 550 m; MMF 62.5 µm up to 275 m	No	5.5 W	Dual	PCIe v2.0 (5.0 GT/s)	I350F2G1P20	E350F2	I350F2BLK
Intel® Ethernet Server Adapter I350-F4		Q4'11	Fiber	Full Height	MMF 50 µm up to 550 m; MMF 62.5 µm up to 275 m	No	6 W	Quad	PCIe v2.0 (5.0 GT/s)	I350F4G1P20	I350F4	I350F4BLK
Intel® Ethernet Server Adapter I350-T2	Stonylake	Q2'11	Copper	Low Profile / Full Height	Category-5 up to 100 m	No	4.4 W	Dual	PCIe v2.0 (5.0 GT/s)		I350T2	I350T2BLK
Intel® Ethernet Server Adapter I350-T4	Stonylake	Q2'11	Copper	Low Profile / Full Height	Category-5 up to 100 m	No	5 W	Quad	PCIe v2.0 (5.0 GT/s)		I350T4	I350T4BLK
Intel® Ethernet Server Adapter I340-F4	Bartonville	Q1'11	Fiber	Full Height	MMF 50 µm up to 550 m; MMF 62.5 µm up to 275 m	No	4.5 W	Quad	PCIe v2.0 (5.0 GT/s)	E1G44HFG1P20	E1G44HF	E1G44HFBK
Intel® Gigabit ET2 Quad Port Server Adapter	Portville	Q3'10	Copper	Low Profile / Full Height	Category-5 up to 100 m	No	8.4 W	Quad	PCIe v2.0 (2.5 GT/s)	E1G44ETG2P20		E1G44ET2BLK
Intel® Ethernet Server Adapter I340-T2	Bartonville	Q2'10	Copper	Low Profile / Full Height	RJ-45 Category-5, up to 100 m	No		Dual	PCIe v2.0 (5.0 GT/s)	E1G42HTG1P20		
Intel® Ethernet Server Adapter I340-T4	Bartonville	Q2'10	Copper	Low Profile / Full Height	Category-5 up to 100 m	No	4.3 W	Quad	PCIe v2.0 (5.0 GT/s)	E1G44HTG1P20	E1G44HT	E1G44HTBLK
Intel® Gigabit EF Dual Port Server Adapter	Lunaville	Q4'08	Fiber	Low Profile / Full Height	MMF 50 µm up to 550 m; MMF 62.5 µm up to 275 m	No	2.2 W	Dual	PCIe v2.0 (2.5 GT/s)	E1G42EFG1P20	E1G42EF	E1G42EFBLK
Intel® Gigabit ET Dual Port Server Adapter	Portville	Q3'08	Copper	Low Profile / Full Height	Category-5 up to 100 m	No	2.9 W	Dual	PCIe v2.0 (2.5 GT/s)	E1G42ETG1P20		E1G42ETBLK
Intel® PRO/1000 PT Server Adapter	Glyndon	Q4'05	Copper	Low Profile / Full Height	Category-5 up to 100 m	No	3.3 W	Single	PCIe v1.0a (2.5 GT/s)	EXPI9400PTG2P20	EXPI9400PT	EXPI9400PTBLK
Intel® PRO/1000 PT Dual Port Server Adapter	Redwater	Q4'05	Copper	Low Profile / Full Height	Category-5 up to 100 m	No	4.95 W	Dual	PCIe v1.0a (2.5 GT/s)	EXPI9402PTG2P20	EXPI9402PT	EXPI9402PTBLK
Intel® PRO/1000 PF Server Adapter	Sheepshead Bay	Q4'05	Fiber	Low Profile / Full Height	MMF 50 µm up to 550 m; MMF 62.5 µm up to 275 m	No	3.3 W	Single	PCIe v1.0a (2.5 GT/s)	EXPI9400PFG2P20	EXPI9400PF	EXPI9400PFBLK
Intel® PRO/1000 PF Dual Port Server Adapter	Bretona	Q4'05	Fiber	Low Profile / Full Height	MMF 50 µm up to 550 m; MMF 62.5 µm up to 275 m	No	3.3 W	Dual	PCIe v1.0a (2.5 GT/s)	EXPI9402PFG2P20	EXPI9402PF	EXPI9402PFBLK
Intel® PRO/1000 MT Server Adapter	Everson	Q3'03	Copper	Low Profile / Full Height	Category-5 up to 100 m	No		Single	PCI-X	PWLA8490MTG1L20	PWLA8490MT	PWLA8490MTBLK5
Intel® PRO/1000 MT Dual Port Server Adapter	Double Barrow	Q3'03	Copper	Low Profile / Full Height	Category-5 up to 100 m	No		Dual	PCI-X	PWLA8492MTG2P20	PWLA8492MT	PWLA8492MTBLK5
Intel® PRO/1000 MF Dual Port Server Adapter	Eldridge	Q3'03	Fiber	Low Profile / Full Height		No		Dual	PCI-X	PWLA8492MFG3P20	PWLA8492MF	PWLA8492MFBK5

Intel® Networking Products

Intel® LAN Controllers

Product #	Code Name	Release	EOL	Socket	Embedded Option	Lithography	Max TDP	# of Ports	Interface Type	MSI	VT-c	NCSI	RSS	FCoE	JFS	1000BT	MACsec	vPro	TSP1	IEEE	DDIO	IntOff	Tape/Tray Part #	
INTEL® 10 GIGABIT ETHERNET NETWORK CONNECTION																								
X540-BT2	Twinville	Q4'12		FCBGA576	Yes	40 nm	14 W	Dual	PCIe v2.1 (5.0 GT/s)		+	+		+	+	+				+		+	JLX540BT2	
X540-AT2	Twinville	Q1'12		FCBGA576	Yes	40 nm	12.5 W	Dual	PCIe v2.1 (5.0 GT/s)					+		+					+	+	+	JLX540AT2
82599EN	Niantic	Q4'11		FCBGA576	Yes	65 nm		Single	PCIe v2.0 (5.0 GT/s)			+			+	+								JL82599EN
82599EB	Niantic	Q2'09		FCBGA576	Yes	65 nm		Dual	PCIe v2.0 (5.0 GT/s)	+	+	+	+	+	+	+								JL82599EB
82599ES	Niantic	Q2'09		FCBGA576	Yes	65 nm		Dual	PCIe v2.0 (5.0 GT/s)	+	+	+	+	+	+	+								JL82599ES
82598EB	Oplin	Q3'07	Q1'15	FCBGA883	Yes	90 nm	6.5 W	Dual	PCIe v2.0 (2.5 GT/s)	+	+	+	+		+									JL82598EB
INTEL® GIGABIT ETHERNET NETWORK CONNECTION																								
I218-LM	Clarkville	Q1'13		QFN48	Yes	40 nm	0.5 W	Single							+	+								WGI218LM
I218-V	Clarkville	Q1'13	Q1'21	QFN48	Yes	40 nm	0.5 W	Single							+	+								WGI218V
I217-LM	Clarkville	Q4'12	Q1'20	QFN48	No	40 nm	0.5 W	Single							+	+								WGI217LM
I217-V	Clarkville	Q4'12	Q1'20	QFN48	Yes	40 nm	0.5 W	Single							+	+								WGI217V
I210-AT	Springville	Q4'12		PQFN64	Yes			Single	PCIe v2.1 (2.5 GT/s)			+			+	+								WGI210IT
I210-IS	Springville	Q4'12		PQFN64	Yes			Single	PCIe v2.1 (2.5 GT/s)			+			+									WGI210AS
I210-IT	Springville	Q4'12		PQFN64	Yes			Single	PCIe v2.1 (2.5 GT/s)			+			+	+	+							WGI210AT
I211-AT	Pearsonville	Q4'12		PQFN64	Yes			Single	PCIe v2.1 (2.5 GT/s)						+	+								WGI211AT
I347-AT4		Q4'11		BGA196	Yes			Quad	SGMII						+	+								PCI347AT4
I350-BT2	Powerville	Q2'11		PBGA576	Yes		2.8 W	Dual	PCIe v2.0 (5.0 GT/s)	+	+	+	+	+	+									NHI350BT2
I350-AM2	Powerville	Q2'11		PBGA256	Yes		2.8 W	Dual	PCIe v2.0 (2.5 GT/s)	+	+	+	+		+									NHI350AM2
I350-AM4	Powerville	Q2'11		PBGA256	Yes		4 W	Quad	PCIe v2.0 (2.5 GT/s)	+	+	+	+		+									NHI350AM4
82579LM	Lewisville	Q1'11	Q1'19	QFN48	Yes	90 nm	0.66 W	Single	PCIe v1.1 (2.5 GT/s)						+		+							WG82579LM
82579V	Lewisville	Q1'11	Q1'19	QFN48	Yes	90 nm	0.66 W	Single	PCIe v1.1 (2.5 GT/s)						+									WG82579V
82580DB	Barton Hills	Q1'10	Q1'19	PBGA256	Yes	90 nm		Dual	PCIe v2.0 (5.0 GT/s)	+		+	+		+									NH82580DB
82580EB	Barton Hills	Q1'10	Q1'19	PBGA256	Yes	90 nm	3.5 W	Quad	PCIe v2.0 (5.0 GT/s)	+	+	+	+		+									NH82580EB
82583V	Colleyville	Q2'09	Q1'18	PQFN64	Yes			Single	PCIe v1.0a (2.5 GT/s)															WG82583V
82574IT	Hartwell	Q2'08	Q1'18	PQFN64	Yes	90 nm	0.727 W	Single	PCIe v1.1 (2.5 GT/s)	+		+	+		+									WG82574IT
82574L	Hartwell	Q2'08	Q1'18	PQFN64	Yes	90 nm	0.727 W	Single	PCIe v1.1 (2.5 GT/s)	+		+	+		+									WG82574L
82576EB	Kawela	Q1'09	Q1'17	BGA576	Yes	90 nm	2.8 W	Dual	PCIe v2.0 (2.5 GT/s)	+	+	+	+		+		+							JL82576EB
82575EB	Zoar	Q2'07	Q1'17	BGA576	Yes	90 nm	2.8 W	Dual	PCIe v2.0 (2.5 GT/s)	+	+	+	+		+									JL82575EB
82573V	Tekoa	Q2'05	Q1'14	TBGA196	Yes	130 nm	1.4 W	Single	PCIe v1.0a (2.5 GT/s)															RC82573V
82573L	Vidalia	Q3'05	Q1'15	TBGA196	Yes	130 nm	1.3 W	Single	PCIe v1.0a (2.5 GT/s)															PC82573L
82573E	Tekoa	Q2'05	Q1'14	TBGA196	Yes	130 nm	1.3 W	Single	PCIe v1.0a (2.5 GT/s)															PC82573E
82572EI	Rimon	Q4'05	Q1'16	BGA256	Yes	90 nm	2.14 W	Single	PCIe v1.0a (2.5 GT/s)															JL82572EI
82571EB	Ophir	Q3'05	Q1'16	BGA256	Yes	90 nm	3.43 W	Dual	PCIe v1.0a (2.5 GT/s)	+			+		+									JL82571EB
82577LM	Hanksville	Q2'09	Q1'17	QFN48	No	90 nm	0.66 W	Single	PCIe v1.1 (2.5 GT/s)						+									WG82577LM
82567V	Boazman	Q2'08	Q1'17	QFN56	Yes	90 nm	0.64 W	Single	GLCI/LCI								+	+						WG82567V
82567LM	Boazman	Q1'08	Q1'17	QFN56	Yes	90 nm	0.64 W	Single	GLCI/LCI				+		+		+	+						WG82567LM
82563EB	Gilgal 2	Q1'06	Q1'15	TQFP100	Yes	150 nm	2.6 W	Dual	GLCI/LCI															HY82563EB
82546GB	Anvik II	Q3'03	Q1'16	PBGA364	Yes	150 nm		Dual	PCI-X															FW82546GB
82545GM	ATTLA	Q3'03	Q1'14	T-PBGA364	Yes	150 nm	1.5 W	Single	PCI-X															PC82545GM
82541PI	Tabor 3	Q1'04	Q1'14	PBGA196	Yes	130 nm	1 W	Single	PCI															GD82541PI
82541ER	Tabor	Q1'04	Q1'14	PBGA196	Yes	130 nm		Single	PCI															LU82541ER
82540EP	Kenai 32	Q3'06	Q3'13	T-PBGA196	Yes	150 nm		Single	PCI															RC82540EP
82540EM	Kenai 32	Q3'02	Q3'13	T-PBGA196	Yes	150 nm	1.4 W	Single	PCI					+	+		+	+						RC82540EM

Intel® Networking Products

Intel® Ethernet Switching Components

Product #	Code Name	Release	EOL	Embedded Option	Lithography	Max TDP	Max Port Bandwidth	Max SGMII Ports	Max XAUI Ports	FlexPipe	Adv Load Bal	CEE/DCB	Server Virt Sup	Adv Tunneling	Part #
INTEL® ETHERNET SWITCHES															
FM5224	Alta Canyon	Q1'13	2H'23	Yes	65 nm	102 W	240 G	72	2	+	+	+	+		EZFM5224A
FM6324		Q1'13	2H'23	Yes	65 nm	102 W	240 G	72	24	+	+	+	+		EZFM6324A
FM6348		Q1'13	2H'23	Yes	65 nm	142 W	480 G	72	24	+	+	+	+		
FM6364		Q1'13	2H'23	Yes	65 nm	195 W	640 G	72	24	+	+	+	+	+	EZFM6364A
FM6724	Alta Canyon	Q1'13	2H'23	Yes	65 nm	102 W	240 G	72	24	+	+	+	+		EZFM6724A
FM6764	Alta Canyon	Q1'13	2H'23	Yes	65 nm	195 W	640 G	72	24	+	+	+	+		EZFM6764A
FM4224		Q1'08	2H'18	Yes	130 nm	47 W	240 G	24	24		+	+	+		EZFM4224F1433E
FM4212		Q1'08	2H'18	Yes	130 nm	30 W	120 G	12	12		+	+	+		EZFM4212F1433C
FM4105	Bali	Q1'08	1H'18	Yes	130 nm	17 W	36 G	18	2		+	+	+		EZFM4105F897E
FM4112		Q1'08	2H'18	Yes	130 nm	27.5 W	96 G	24	8		+	+	+		
FM4410		Q1'08	2H'18	Yes	130 nm	26 W	90 G	16	8		+	+	+		FBFM4410F529E
FM2224		Q1'06	1H'14	No	130 nm	23.5 W	240 G	24	24						FBFM2224F1433E
FM2212		Q1'06	1H'14	No	130 nm	18 W	120 G	12	12						FBFM2212F1433E
FM2112		Q1'06	1H'14	No	130 nm	14.3 W	96 G	24	8						FBFM2112F897E

Intel® Wi-Fi Products

Product #	Release	Band	Board Form Factor	Max Speed	Integrated Bluetooth	Interface Type	Wireless Display	4G WiMAX	vPro	SCT	HMC Part #	M.2 Part #
INTEL® WIRELESS 7200 SERIES												
Intel® Wireless-N 7260	Q2'13		PCIe Half Mini Card/ M.2	300 Mbps	Yes	PCIe/USB	+			+	7260.HMWBNG	7260.NGWBNG
Intel® Dual Band Wireless-N 7260	Q2'13		PCIe Half Mini Card/ M.2 (NGFF)	300 Mbps	Yes	PCIe/USB	+		+	+	7260.HMWNBG	7260.NGWNBG
Intel® Dual Band Wireless-AC 7260	Q2'13		PCIe Half Mini Card/ M.2 (NGFF)	300/867 Mbps	Yes	PCIe/USB	+		+	+	7260.HMWG	7260.NGWG
Intel® Centrino® Wireless-N 2230	Q2'13	Single	PCIe Half Mini Card	300 Mbps	Yes	PCIe	+		+		2230BN.HMWG	
Intel® Centrino® Wireless-N 2200	Q2'12	Single	PCIe Half Mini Card	300 Mbps	No	PCIe	+		+			
Intel® Centrino® Wireless-N 135	Q2'12	Single	PCIe Half Mini Card	150 Mbps	Yes	PCIe					135BN.HMWG	
Intel® Centrino® Wireless-N 130	Q1'11	Single	PCIe Half Mini Card	150 Mbps	Yes	PCIe					130BN.HMWG	
Intel® Centrino® Wireless-N 105	Q2'13	Single	PCIe Half Mini Card	150 Mbps	No	PCIe					105BN.HMWG	
Intel® Centrino® Wireless-N 1030	Q1'11	Single	PCIe Half Mini Card	150 Mbps TX/300 Mbps RX	Yes	PCIe	+				11230BN.HMWG	
Intel® Centrino® Wireless-N 1000	Q1'11	Single	PCIe Half Mini Card	300 Mbps	No	PCIe	+				112BN.HMWG	
Intel® Centrino® Wireless-N 100	Q1'11	Single	PCIe Half Mini Card	150 Mbps	No	PCIe					100BN.HMWEB	
Intel® Centrino® Ultimate-N 6300	Q1'11	Dual	PCIe Half Mini Card	450 Mbps	No	PCIe	+		+		633AN.HMWG	
Intel® Centrino® Advanced-N 6235	Q3'12	Dual	PCIe Half Mini Card, PCIe M.2	300 Mbps	Yes	PCIe	+		+	+	6235AN.HMWG	
Intel® Centrino® Advanced-N 6230	Q1'11	Dual	PCIe Half Mini Card	300 Mbps	Yes	PCIe	+		+		62230AN.HMWG	
Intel® Centrino® Advanced-N 6205	Q1'11	Dual	PCIe Half Mini Card	300 Mbps	No	PCIe	+		+		62205AN.HMWG	
Intel® Centrino® Advanced-N 6200	Q1'11	Dual	PCIe Half Mini Card	300 Mbps	No	PCIe	+		+		622AN.HMWG	
INTEL® CENTRINO® WIMAX												
Centrino® Wireless-N + WiMAX 6150	Q2'11	Single	PCIe Half MiniCard	150 Mbps Tx/300 Mbps Rx	No	PCIe	+	+				
Centrino® Advanced-N + WiMAX 6250	Q2'11	Dual	PCIe Half MiniCard	300 Mbps	No	PCIe	+	+	+		622ANXHMWG	

Intel® Desktop Processors

Intel® Celeron®, Core™ 2 Duo & Quad Desktop

Processor Number	Code Name	Release	Cores / Threads	Clock Speed	Cache	Bus	Litho-graphy	Max TDP	Embedded Option	Integrated Graphics	# of Displays	# PCIe Lanes	Max CPU	HT	VT-x	EPT	TXT	G4	IS	EIST	TMT	Fast Flex	XDB	Socket	OEM Tray Part #	Retail Boxed Part #	Chipsets	
INTEL® CELERON®																												
J1850	Bay Trail	Roadmap	4 / 4	2.00 GHz	2 MB			10 W	No	Yes	2	4			+										FH8065301455200			
J1750	Bay Trail	Roadmap	2 / 2	2.41 GHz	2 MB			10 W	No	Yes	2	4			+										TBD			
G555	Sandy Bridge	Q3'12	2 / 2	2.70 GHz	2 MB	5 GT/s DMI	32 nm	65 W	No	Yes	2		1		+	+		+	+	+	+	+	+	+	FCLGA1155	CM8062301263601	BX80623G555	B65, H61, H67, P67, Q65, Q67, Z68, H77, Z75, Z77, B75
G550T	Sandy Bridge	Q3'12	2 / 2	2.20 GHz	2 MB	5 GT/s DMI	32 nm	35 W	No	Yes	2		1		+	+		+	+	+	+	+	+	+	FCLGA1155	CM8062301002309		B65, H61, H67, P67, Q65, Q67, Z68, H77, Z75, Z77, B75
G550	Sandy Bridge	Q2'12	2 / 2	2.60 GHz	2 MB	5 GT/s DMI	32 nm	65 W	No	Yes	2		1		+	+		+	+	+	+	+	+	+	FCLGA1155	CM8062307261218	BX80623G550	B65, B75, H61, H67, H77, P67, Q65, Q67, Z68, Z75, Z77
G540T	Sandy Bridge	Q2'12	2 / 2	2.10 GHz	2 MB	5 GT/s DMI	32 nm	35 W	No	Yes	2		1		+	+		+	+	+	+	+	+	+	FCLGA1155	CM8062301047004		B65, B75, H61, H67, H77, P67, Q65, Q67, Z68, Z75, Z77
G540	Sandy Bridge	Q3'11	2 / 2	2.50 GHz	2 MB	5 GT/s DMI	32 nm	65 W	Yes	Yes	2		1		+			+	+	+	+	+	+	+	FCLGA1155	CM8062301046804	BX80623G540	B65, B75, C206, H61, H67, H77, P67, Q65, Q67, Z68, Z75, Z77
G530T	Sandy Bridge	Q3'11	2 / 2	2.00 GHz	2 MB	5 GT/s DMI	32 nm	35 W	No	Yes	2		1		+			+	+	+	+	+	+	+	FCLGA1155	CM8062301046904		B65, B75, H61, H67, H77, P67, Q65, Q67, Z68, Z75, Z77
G530	Sandy Bridge	Q3'11	2 / 2	2.40 GHz	2 MB	5 GT/s DMI	32 nm	65 W	No	Yes	2		1		+			+	+	+	+	+	+	+	FCLGA1155	CM8062301046704	BX80623G530	B65, H61, H67, P67, Q65, Q67, Z68
G465	Sandy Bridge	Q3'12	1 / 2	1.90 GHz	1.5 MB	5 GT/s DMI	32 nm	35 W	No	Yes	2		1		+	+	+		+	+	+	+	+	+	FCLGA1155	CM8062301264500	BX80623G465	B65, H61, H67, P67, Q65, Q67, Z68, H77, Z75, Z77, B75
G470	Sandy Bridge	Q2'13	1 / 2	2.00 GHz	1.5 MB	5 GT/s DMI	32 nm	35 W	No	Yes	2		1		+	+	+		+	+	+	+	+	+	FCLGA1155	CM8062301264401		B65, B75, H61, H67, H77, P67, Q65, Q67, Z68, Z75, Z77
G460	Sandy Bridge	Q4'11	1 / 2	1.80 GHz	1.5 MB	5 GT/s DMI	32 nm	35 W	No	Yes	2		1		+	+		+	+	+	+	+	+	+	FCLGA1155	CM8062301088702	BX80623G460	B65, H61, H67, P67, Q65, Q67, Z68
G1630	Sandy Bridge	Q3'13	2 / 2	2.80 GHz	2 MB	5 GT/s DMI	22 nm	55 W	No	Yes	3	6	1		+	+		+	+	+	+	+	+	+	FCLGA1155	CM8063701444901	BX80637G1610	B75, H61, H67, H77, P67, Q77, Z68, Z75, Z77
G1620T	Sandy Bridge	Q3'13	2 / 2	2.40 GHz	2 MB	5 GT/s DMI	22 nm	35 W	No	Yes	3	6	1		+	+		+	+	+	+	+	+	+	FCLGA1155	CM8063701448300		B75, H61, H67, H77, P67, Q77, Z68, Z75, Z77
G1620	Ivy Bridge	Q1'13	2 / 2	2.70 GHz	2 MB	5 GT/s DMI	22 nm	55 W	Yes	Yes	3	6	1		+	+		+	+	+	+	+	+	+	FCLGA1155	CM8063701445001	BX80637G1620	B75, H61, H67, H77, P67, Q77, Z68, Z75, Z77
G1610T	Ivy Bridge	Q1'13	2 / 2	2.30 GHz	2 MB	5 GT/s DMI	22 nm	35 W	No	Yes	3	6	1		+	+		+	+	+	+	+	+	+	FCLGA1155	CM8063701445100		B75, H61, H67, H77, P67, Q77, Z68, Z75, Z77
G1610	Ivy Bridge	Q1'13	2 / 2	2.60 GHz	2 MB	5 GT/s DMI	22 nm	55 W	No	Yes	3	6	1		+			+	+	+	+	+	+	+	FCLGA1155	CM8063701444901	BX80637G1610	B75, H61, H67, H77, P67, Q77, Z68, Z75, Z77
P1053	Jasper Forest	Q1'10	1 / 2	1.33 GHz	2 MB	2.5 GT/s DMI	45 nm	30 W	Yes	No			1		+	+			+	+				FCLGA1366	AT80612004743AA		3420	
E1500	Conroe	Q3'06	2 / 2	2.20 GHz	512 KB	800 MHz FSB	65 nm	65 W	Yes	No										+	+	+	+	+	LGA775	HH80557PG049D		945G, 945GC, 945GZ, 945P, 945PL, 946GZ, 946PL, 975X, G31, G33, G35, G41, G43, G45, G965, P31, P35, P45, P965, Q33, Q35, Q43, Q45, Q963, Q965, X38, X48
440	Conroe	Q3'06	1 / 1	2.00 GHz	512 KB	800 MHz FSB	65 nm	35 W	Yes	No										+				+	LGA775	HH80557RG041512	BX80557440	3000, 3010, 3210, 945G, 945GC, 945GZ, 945P, 945PL, 946GZ, 946PL, G31, G33, G41, G43, G45, G965, P31, P35, P43, P45, P965, Q33, Q35, Q43, Q45, Q963, Q965
INTEL® CORE™ 2 DUO																												
E8400	Wolfdale	Q1'08	2 / 2	3.00 GHz	6 MB	1333 MHz FSB	45 nm	65 W	Yes	No					+					+	+	+	+	+	LGA775	AT80570PJ0806M		3210, G31, G33, G35, G41, G43, G45, P31, P35, P43, P45, Q33, Q35, Q43, Q45, X38, X48
E7400	Wolfdale	Q1'08	2 / 2	2.80 GHz	3 MB	1066 MHz FSB	45 nm	65 W	Yes	No										+	+	+	+	+	LGA775	AT80571PH0723ML		G31, G33, G35, G41, G43, G45, P31, P35, P43, P45, Q33, Q35, Q43, Q45, X38, X48
E6400	Conroe	Q3'06	2 / 2	2.13 GHz	2 MB	1066 MHz FSB	65 nm	65 W	Yes						+					+	+	+	+	+	LGA775	HH80557PH0462M		3000, 3010, 945G, 945GC, 945P, 945PL, 946GZ, 946PL, G31, G33, G41, G43, G45, G965, P31, P35, P43, P45, P965, Q33, Q35, Q43, Q45, Q963, Q965, X38, X48
E4300	Conroe	Q3'06	2 / 2	1.80 GHz	2 MB	800 MHz FSB	65 nm	65 W	Yes											+	+	+	+	+	LGA775	HH80557PG0332M		3000, 3010, 945G, 945GC, 945P, 945PL, 946GZ, 946PL, G31, G33, G41, G43, G45, G965, P31, P35, P43, P45, P965, Q33, Q35, Q43, Q45, Q963, Q965, X38, X48
INTEL® CORE™ 2 QUAD																												
Q9400	Yorkfield	Q3'08	4 / 4	2.66 GHz	6 MB	1333 MHz FSB	45 nm	95 W	Yes	No					+					+	+	+	+	+	LGA775	AT80580PJ0676M	BX80580Q9400	3210, G33, G35, G41, G43, G45, P35, P43, P45, Q33, Q35, Q43, Q45, X38, X48

Intel® Desktop Processors

Intel® Core™ i7 & i7 Extreme Desktop

Processor Number	Code Name	Release	Cores / Threads	Clock Speed	Cache	Bus	Litho-graphy	Max TDP	Embedded Option	Integrated Graphics	# of Displays	# PCIe Lanes	Max CPU	Turbo	V-Pro	HT	VT-x	VT-d	EPT	TXT	AES	64	Anti	IS	EIST	TMT	Fast	Flex	XDB	Socket	OEM Tray Part #	Retail Boxed Part #	Chipsets
INTEL® CORE™ i7																																	
i7-4930K	Ivy Bridge	Q3'13	6 / 12	3.40 GHz	12 MB	QPI		130 W	No					+	+	+						+		+					FCLGA2011	CM8063301292702	BX80633I74930K	X79	
i7-4820K	Ivy Bridge	Q3'13	4 / 8	3.70 GHz	10 MB	QPI		130 W	No					+	+	+						+		+					FCLGA2011	CM8063301292805	BX80633I74820K	X79	
i7-4771	Haswell	Q3'13	4 / 8	3.50 GHz	8 MB	QPI	22 nm	84 W	No	Yes	3	16	1	+	+	+	+	+	+	+	+	+	+	+	+	+	+	+	FCLGA1150	CM8064601464302	BX80646I74771	B85, H81, H87, Q85, Q87, Z87	
i7-4770T	Haswell	Q2'13	4 / 8	2.50 GHz	8 MB		22 nm	45 W	No	Yes	3	16	1	2.0	+	+	+	+	+	+	+	+	+	+	+	+	+	+	FCLGA1150	CM8064601465902		B85, H81, H87, Q85, Q87, Z87	
i7-4770S	Haswell	Q2'13	4 / 8	3.10 GHz	8 MB		22 nm	65 W	Yes	Yes	3	16	1	2.0	+	+	+	+	+	+	+	+	+	+	+	+	+	+	FCLGA1150	CM8064601465504	BX80646I74770S	B85, H81, H87, Q85, Q87, Z87	
i7-4770R	Crystal Well	Q2'13	4 / 8	3.20 GHz	6 MB		22 nm	65 W	No	Yes	3	16	1	2.0	+	+	+	+	+	+	+	+	+	+	+	+	+	+	FCLGA1150	CL8064701508001		B85, H81, H87, Q85, Q87, Z87	
i7-4770K	Haswell	Q2'13	4 / 8	3.50 GHz	8 MB		22 nm	84 W	No	Yes	3	16	1	2.0	+	+	+	+	+	+	+	+	+	+	+	+	+	+	FCLGA1150	CM8064601464206	BX80646I74770K	B85, H81, H87, Q85, Q87, Z87	
i7-4770	Haswell	Q2'13	4 / 8	3.40 GHz	8 MB		22 nm	84 W	No	Yes	3	16	1	2.0	+	+	+	+	+	+	+	+	+	+	+	+	+	+	FCLGA1150	CM8064601464303	BX80646I74770	B85, H81, H87, Q85, Q87, Z87	
i7-4765T	Haswell	Q2'13	4 / 8	2.00 GHz	8 MB		22 nm	35 W	No	Yes	3	16	1	2.0	+	+	+	+	+	+	+	+	+	+	+	+	+	+	FCLGA1150	CM8064601466200		B85, H81, H87, Q85, Q87, Z87	
i7-3770T	Ivy Bridge	Q2'12	4 / 8	2.50 GHz	8 MB	5 GT/s DMI	22 nm	45 W	No	Yes	3		1	2.0	+	+		+	+	+	+	+	+	+	+	+	+	+	FCLGA1155	CM8063701212200		B75, H61, H67, H77, P67, Q75, Q77, Z68, Z75, Z77	
i7-3770S	Ivy Bridge	Q2'12	4 / 8	3.10 GHz	8 MB	5 GT/s DMI	22 nm	65 W	No	Yes	3		1	2.0	+	+	+	+	+	+	+	+	+	+	+	+	+	+	FCLGA1155	CM8063701211900	BX80637I73770S	B75, H61, H67, H77, P67, Q75, Q77, Z68, Z75, Z77	
i7-3770K	Ivy Bridge	Q2'12	4 / 8	3.50 GHz	8 MB	5 GT/s DMI	22 nm	77 W	No	Yes	3		1	2.0	+	+		+	+	+	+	+	+	+	+	+	+	+	FCLGA1155	CM8063701211700	BX80637I73770K	B75, H61, H67, H77, P67, Q75, Q77, Z68, Z75, Z77	
i7-3770	Ivy Bridge	Q2'12	4 / 8	3.40 GHz	8 MB	5 GT/s DMI	22 nm	77 W	Yes	Yes	3		1	2.0	+	+	+	+	+	+	+	+	+	+	+	+	+	+	FCLGA1155	CM8063701211600	BX80637I73770	B75, H61, H67, H77, P67, Q75, Q77, Z68, Z75, Z77	
i7-3930K	Sandy Bridge-E	Q4'11	6 / 12	3.20 GHz	12 MB	5 GT/s DMI	32 nm	130 W	No	No		40	1	2.0	+	+					+	+	+					FCLGA2011	CM8061901100802	BX80619I73930K	X79		
i7-3820	Sandy Bridge-E	Q1'12	4 / 8	3.60 GHz	10 MB	5 GT/s DMI	32 nm	130 W	No	No		40	1	2.0	+	+	+				+	+						+	FCLGA2011	CM8061901049606	BX80619I73820	X79	
i7-2600	Sandy Bridge	Q1'11	4 / 8	3.40 GHz	8 MB	5 GT/s DMI	32 nm	95 W	Yes	Yes	2	16	1	+	+	+				+	+	+	+	+	+	+	+	LGA1155	CM8062300834302	BX80623I72600	B65, B75, H61, H67, H77, P67, Q65, Q67, Q75, Q77, Z68, Z75, Z77		
INTEL® CORE™ i7 EXTREME																																	
i7-4960X	Ivy Bridge	Q3'13	6 / 12	3.60 GHz	15 MB	QPI		130 W	No					+	+	+					+		+					+	FCLGA2011	CM8063301292500	BX80633I74960X	X79	
i7-3970X	Sandy Bridge-E	Q4'12	6 / 12	3.50 GHz	15 MB	5 GT/s DMI	32 nm	150 W	No	No		40	1	2.0	+	+		+			+	+	+					+	FCLGA2011	CM8061901281201	BX80619I73970X	X79	
i7-3960X	Sandy Bridge-E	Q4'11	6 / 12	3.30 GHz	15 MB	5 GT/s DMI	32 nm	130 W	No	No		40	1	2.0	+	+		+	+		+	+	+					+	FCLGA2011	CM8061907184018	BX80619I73960X	X79	

Intel® Desktop Chipset Compatibility Table

Chipset	B65, Q65		B75, Q75, Z75		B85, Q85		H61		H67, P67, Q67		H77, Q77, Z77		H81		H87, Q87, Z87		X79		Z68	
LAUNCH DATE	Q1'11		Q2'12		Q2'13		Q1'11		Q1'11		Q2'12		Q3'13		Q2'13		Q4'11		Q2'11	
CODE NAME	Cougar Point		Panther Point		Lynx Point		Cougar Point		Cougar Point		Panther Point		Lynx Point		Lynx Point		Patsburg		Cougar Point	
DESKTOP MOTHERBOARDS	DB65AL		DB75EN DZ75ML-45K		DB85FL		DH61AG DH61AGL DH61BE DH61BF DH61CR DH61DL DH61HO DH61SKCH DH61KVCH DH61SA DH61VW DH61ZE		DH67BL DH67CF DH67CL DH67GD DH67VR DP67BA DP67BG DP67DE DQ67EP DQ67OW DQ67SW		DH77DF DH77EB DH77KC DQ77MK DQ77KB DQ77CP DZ77BH-55K DZ77GA-70K DZ77RE-75K DZ77SL-50K		All Boards EOL		DH87RL DH87MC DQ87PG DZ87KLT-75K		DX79TO DX79SR DX79SI		All Boards EOL	
	G440	G2010	i3-3220	i3-4130	G2010	i3-3220	G440	i5-2500S	G2010	i3-3220	i3-4130	i3-4130			i7-3960X	G440	i5-2500S			
	G460	G2020	i3-3220T	i3-4130T	G2020	i3-3220T	G460	i5-2500T	G2020	i3-3220T	i3-4130T	i3-4130T			i7-3930K	G460	i5-2500T			
	G470	G2020T	i3-3225	i3-4330	G2020T	i3-3225	G465	i5-2550K	G2020T	i3-3225	i3-4330	i3-4330			i7-3820	G465	i5-2550K			
	G530	G2030	i3-3240	i3-4330T	G2030	i3-3240	G470	i7-2600	G2030	i3-3240	i3-4330T	i3-4330T			i7-3970X	G470	i7-2600			
	G530T	G2030T	i3-3240T	i3-4330TE	G2030T	i3-3240T	G530	i7-2600K	G2030T	i3-3240T	i3-4330TE	i3-4330TE			i7-4960X	G530	i7-2600K			
	G540	G2100T	i3-3245	i3-4340	G2100T	i3-3245	G530T	i7-2600S	G2100T	i3-3245	i3-4340	i3-4340			i7-4930K	G530T	i7-2600S			
	G540T	G2120	i3-3250	i5-4570	G2120	i3-3250	G540	i7-3770	G2120	i3-3250	i5-4430	i5-4430			i7-4820K	G540	i7-3770			
	G550	G2120T	i3-3250T	i5-4570R	G2120T	i3-3250T	G540T	i7-3770K	G2120T	i3-3250T	i5-4430S	i5-4430S				G540T	i7-3770K			
	G550T	G2130	i5-2400	i5-4570S	G2130	i5-2300	G550	i7-3770S	G2130	i5-2300	i5-4440	i5-4440				G550	i7-3770S			
	G555	G2140	i5-2400S	i5-4570T	G2140	i5-2310	G550T	i7-3770T	G2140	i5-2310	i5-4440S	i5-4440S				G550T	i7-3770T			
G620	G440	i5-2405S	i5-4570TE	G440	i5-2320	G555		G440	i5-2320	i5-4570	i5-4570		G555							
G620T	G460	i5-2450P	i5-4670	G460	i5-2380P	G620		G460	i5-2380P	i5-4570R	i5-4570R		G620							
G622	G465	i5-2500	i5-4670K	G465	i5-2390T	G620T		G465	i5-2390T	i5-4570S	i5-4570S		G620T							
G630	G470	i5-2500K	i5-4670R	G470	i5-2400	G622		G470	i5-2400	i5-4570T	i5-4570T		G622							
G630T	G530	i5-2500S	i5-4670S	G530	i5-2400S	G630		G530	i5-2400S	i5-4570TE	i5-4570TE		G630							
G632	G530T	i5-2500T	i5-4670T	G530T	i5-2405S	G630T		G530T	i5-2405S	i5-4670	i5-4670		G630T							
G640	G540	i5-2550K	i7-4765T	G540	i5-2450P	G632		G540	i5-2450P	i5-4670K	i5-4670K		G632							
G640T	G540T	i5-3450	i7-4770	G540T	i5-2500	G640		G540T	i5-2500	i5-4670R	i5-4670R		G640							
G645	G550	i5-3450S	i7-4770K	G550	i5-2500K	G640T		G550	i5-2500K	i5-4670S	i5-4670S		G640T							
G645T	G550T	i5-3470	i7-4770R	G550T	i5-2500S	G645		G550T	i5-2500S	i5-4670T	i5-4670T		G645							
G840	G555	i5-3470S	i7-4770S	G555	i5-2500T	G645T		G555	i5-2500T	i7-4765T	i7-4765T		G645T							
G850	G620	i5-3470T	i7-4770T	G620	i5-2550K	G840		G620	i5-2550K	i7-4770	i7-4770		G840							
G860	G620T	i5-3475S	i7-4770TE	G620T	i5-3330	G850		G620T	i5-3330	i7-4770K	i7-4770K		G850							
G860T	G622	i5-3550	i7-4771	G622	i5-3330S	G860		G622	i5-3330S	i7-4770R	i7-4770R		G860							
G870	G630	i5-3550S		G630	i5-3340	G860T		G630	i5-3340	i7-4770S	i7-4770S		G860T							
i3-2100	G630T	i5-3570		G630T	i5-3340S	G870		G630T	i5-3340S	i7-4770T	i7-4770T		G870							
i3-2100T	G632	i5-3570K		G632	i5-3350P	i3-2100		G632	i5-3350P	i7-4770TE	i7-4770TE		i3-2100							
i3-2102	G640	i5-3570S		G640	i5-3450	i3-2100T		G640	i5-3450	i7-4771	i7-4771		i3-2100T							
i3-2105	G640T	i5-3570T		G640T	i5-3450S	i3-2102		G640T	i5-3450S				i3-2102							
i3-2115C	G645	i7-2600		G645	i5-3470	i3-2105		G645	i5-3470				i3-2105							
i3-2120	G645T	i7-2600K		G645T	i5-3470S	i3-2115C		G645T	i5-3470S				i3-2115C							
i3-2120T	G840	i7-2600S		G840	i5-3470T	i3-2120		G840	i5-3470T				i3-2120							
i3-2125	G850	i7-3770		G850	i5-3475S	i3-2120T		G850	i5-3475S				i3-2120T							
i3-2130	G860	i7-3770K		G860	i5-3550	i3-2125		G860	i5-3550				i3-2125							
i5-2390T	G860T	i7-3770S		G860T	i5-3550S	i3-2130		G860T	i5-3550S				i3-2130							
i5-2400	G870	i7-3770T		G870	i5-3570	i5-2300		G870	i5-3570				i5-2300							
i5-2400S	i3-2100			i3-2100	i5-3570K	i5-2310		i3-2100	i5-3570K				i5-2310							
i5-2405S	i3-2100T			i3-2100T	i5-3570S	i5-2320		i3-2100T	i5-3570S				i5-2320							
i5-2450P	i3-2102			i3-2102	i5-3570T	i5-2380P		i3-2102	i5-3570T				i5-2380P							
i5-2500	i3-2105			i3-2105	i7-2600	i5-2390T		i3-2105	i7-2600				i5-2390T							
i5-2500K	i3-2115C			i3-2115C	i7-2600K	i5-2400		i3-2115C	i7-2600K				i5-2400							
i5-2500S	i3-2120			i3-2120	i7-2600S	i5-2400S		i3-2120	i7-2600S				i5-2400S							
i5-2500T	i3-2120T			i3-2120T	i7-3770	i5-2405S		i3-2120T	i7-3770				i5-2405S							
i5-2550K	i3-2125			i3-2125	i7-3770K	i5-2450P		i3-2125	i7-3770K				i5-2450P							
i7-2600	i3-2130			i3-2130	i7-3770S	i5-2500		i3-2130	i7-3770S				i5-2500							
i7-2600K	i3-3210			i3-3210	i7-3770T	i5-2500K		i3-3210	i7-3770T				i5-2500K							

Intel® Mobile Processors

Intel® Core™ 2 Duo, Core™ 2 Quad & Pentium® Mobile Processors

Processor Number	Code Name	Release	Cores / Threads	Clock Speed	Cache	Bus	Litho-graphy	Max TDP	Embedded Option	Integrated Graphics	# of Displays	# PCIe Lanes	HT	VT-x	64	WiFi	IS	EIST	TMT	Fast Flex	XDB	Socket	uFCBGA Tray Part #	uFCPGA Tray Part #	Boxed Part #	Chipsets	
INTEL® CORE™ 2 DUO MOBILE PROCESSOR																											
U7500	Merom	Q3'06	2 / 2	1.06 GHz	2 MB	533 MHz FSB	65 nm	10 W	Yes				+	+				+				+	Socket P	LE80537UE0042M			GM965, GME965, PM965
T9400	Penryn	Q3'08	2 / 2	2.53 GHz	6 MB	1066 MHz FSB	45 nm	35 W	Yes				+	+	+							+	BGA479 / PGA478	AV80576GH0616M	AW80576GH0616M	BX80576T9400	5100, GM45, PM45
T7500	Merom	Q3'06	2 / 2	2.20 GHz	4 MB	800 MHz FSB	65 nm	35 W	Yes				+	+			+					+	PBGA479 / PPGA478	LE80537GG0494M	LE80537GG0494M		GME965
T7400	Merom	Q3'06	2 / 2	2.16 GHz	4 MB	667 MHz FSB	65 nm	34 W	Yes				+	+			+					+	PBGA479 / PPGA478	LE80537GF0484M	LF80537GF0484M		E7520, 945GM, 945GME, 945PM
SU9300	Penryn	Q3'08	2 / 2	1.20 GHz	3 MB	800 MHz FSB	45 nm	10 W	Yes				+	+								+	BGA956	AV80577UG0093M			3100, GS45
SP9300	Penryn	Q3'08	2 / 2	2.26 GHz	6 MB	1066 MHz FSB	45 nm	25 W	Yes				+	+								+	BGA956	AV80576SH0516M			GS45
SL9400	Penryn	Q3'08	2 / 2	1.86 GHz	6 MB	1066 MHz FSB	45 nm	17 W	Yes				+	+								+	BGA956	AV80576LH0366M			5100, GS45
SL9380	Penryn	Q3'08	2 / 2	1.80 GHz	6 MB	800 MHz FSB	45 nm	17 W	Yes				+	+								+	BGA956	AV80576LG0336M			GS45
P8700	Penryn	Q4'08	2 / 2	2.53 GHz	3 MB	1066 MHz FSB	45 nm	25 W	No				+	+			+					+	BGA479 / PGA478		AW80577SH0613MG		GM45, PM45
P8600	Penryn	Q3'08	2 / 2	2.40 GHz	3 MB	1066 MHz FSB	45 nm	25 W	No				+	+			+					+	BGA479 / PGA478	AV80577SH0563M	AW80577SH0563M	BX80577P8600	GM45, PM45
P8400	Penryn	Q3'08	2 / 2	2.26 GHz	3 MB	1066 MHz FSB	45 nm	25 W	Yes				+	+			+					+	BGA479 / PGA478	AV80577SH0513M			GM45, PM45
L7500	Merom	Q3'06	2 / 2	1.60 GHz	4 MB	800 MHz FSB	65 nm	17 W	Yes				+	+			+					+	PBGA479		LE80537LG0254M		
L7400	Merom	Q3'06	2 / 2	1.50 GHz	4 MB	667 MHz FSB	65 nm	17 W	Yes				+	+								+	PBGA479		LE80537LF0214M		3100, E7520, 945GM, 945GME, 945GMS, 945PM
INTEL® CORE™ 2 QUAD MOBILE PROCESSOR																											
Q9100	Penryn	Q3'08	4 / 4	2.26 GHz	12 MB	1066 MHz FSB	45 nm	45 W	No				+	+			+					+	PGA478		AW80581GH051003		GM45, PM45
Q9000	Penryn	Q1'09	4 / 4	2.00 GHz	6 MB	1066 MHz FSB	45 nm	45 W	No				+	+			+					+	PGA478		AW80581GH0416M		
INTEL® PENTIUM® MOBILE PROCESSOR																											
N3510	Bay Trail	Roadmap	4 / 4	2.00 GHz	2 MB		22 nm	7.5 W	No	Yes		4	+	+			+						TBD				
3560Y	Haswell	Q3'13	2 / 2	1.20 GHz	2 MB		22 nm	11.5W	No	Yes	3	12	+	+			+					+	CL8064701486008				HM86, HM87
3556U	Haswell	Q3'13	2 / 2	1.70 GHz	2 MB		22 nm	15 W	No	Yes	3	10	+	+			+					+	CL8064701558100				HM86, HM87
3550M	Haswell	Q4'13	2 / 2	2.30 GHz	2 MB		22 nm	37 W	No	Yes	3	16	+	+			+					+		CW8064701486907			HM86, HM87
2129Y	Ivy Bridge	Q1'13	2 / 2	1.10 GHz	2 MB	5 GT/s DMI	22 nm	10 W	No	Yes	3	1	+	+			+	+	+	+	+	+	FCBGA1023	AV8063801377901			HM70, HM75, HM76, HM77, QS77, UM77
2127U	Ivy Bridge	Q3'13	2 / 2	1.90 GHz	2 MB	5 GT/s DMI	22 nm	17 W	No	Yes	3	1	+	+			+	+	+	+	+	+	FCBGA1023	AV8063801119100			HM70, HM75, HM76, HM77, QS77, UM77
2117U	Ivy Bridge	Q3'12	2 / 2	1.80 GHz	2 MB	5 GT/s DMI	22 nm	17 W	No	Yes	3	1	+	+			+	+	+	+	+	+	FCBGA1023	AV8063801058800			HM70, HM75, HM76, HM77, QS77, UM77
2030M	Ivy Bridge	Q1'13	2 / 2	2.50 GHz	2 MB	5 GT/s DMI	22 nm	35 W	No	Yes	3	1	+	+			+	+	+	+	+	+	FCPGA988		AW8063801120500		HM70, HM75, HM76, HM77
2020M	Ivy Bridge	Q3'12	2 / 2	2.40 GHz	2 MB	5 GT/s DMI	22 nm	35 W	No	Yes	3	1	+	+			+	+	+	+	+	+	FCPGA988		AW8063801211202		HM70, HM75, HM76, HM77
B915C	Gladden	Q2'12	2 / 4	1.50 GHz	3 MB			15 W	Yes			20	+	+			+	+	+	+	+	+	FCBGA1284	AV8062701147401			
B980	Sandy Bridge	Q2'12	2 / 2	2.40 GHz	2 MB	5 GT/s DMI	32 nm	35 W	No	Yes	2	1		+			+	+	+	+	+	+	PGA988		FF8062700997802		
B970	Sandy Bridge	Q1'12	2 / 2	2.30 GHz	2 MB	5 GT/s DMI	32 nm	35 W	No	Yes	2	1		+			+	+	+	+	+	+	FCPGA988		FF8062700998002		
B960	Sandy Bridge	Q4'11	2 / 2	2.20 GHz	2 MB	5 GT/s DMI	32 nm	35 W	No	Yes	2	1		+			+	+	+	+	+	+	PGA988		FF8062700997701		
B950	Sandy Bridge	Q2'11	2 / 2	2.10 GHz	2 MB	5 GT/s DMI	32 nm	35 W	No	Yes	2	1		+			+	+	+	+	+	+	PGA988		FF8062700847901		HM65, HM67
997	Sandy Bridge	Q3'12	2 / 2	1.60 GHz	2 MB	5 GT/s DMI	32 nm	17 W	No	Yes	2	1		+			+	+	+	+	+	+	FCBGA1023	AV8062701084801			
987	Sandy Bridge	Q3'12	2 / 2	1.50 GHz	2 MB	5 GT/s DMI	32 nm	17 W	No	Yes	2	1		+			+	+	+	+	+	+	FCBGA1023	AV8062701147601			
977	Sandy Bridge	Q1'12	2 / 2	1.40 GHz	2 MB	5 GT/s DMI	32 nm	17 W	No	Yes	2	1		+			+	+	+	+	+	+	FCBGA1023	AV8062701147701			
967	Sandy Bridge	Q4'11	2 / 2	1.30 GHz	2 MB	5 GT/s DMI	32 nm	17 W	No	Yes	2	1		+			+	+	+	+	+	+	FCBGA1023	AV8062701147801			TBD
957	Sandy Bridge	Q2'11	2 / 2	1.20 GHz	2 MB	5 GT/s DMI	32 nm	17 W	No	Yes	2	1		+			+	+	+	+	+	+	FCBGA1023	AV8062700852600			HM65, HM67, QS67, UM67
T4400	Penryn	Q4'09	2 / 2	2.20 GHz	1 MB	800 MHz FSB	45 nm	35 W	No				+	+								+	Socket P		AW80577GG0491MA		

Intel® Mobile Processors

Intel® Atom™ Mobile, Smartphone & Tablet

Processor Number	Code Name	Release	Cores / Threads	Clock Speed	Cache	Bus	Max TDP	Litho-graphy	Embedded Option	Integrated Processor Graphics	# of Displays	HT	VT-x	64	IS	EIST	DBS	TMT	XDB	Socket	uFCBGA Tray Part #	uFCPGA Tray Part #	Chipsets
INTEL® ATOM™ MOBILE PROCESSOR																							
Z530P	Silverthorne	Q2'08	1 / 2	1.60 GHz	512 KB	533 MHz FSB	2.2 W	45 nm	Yes			+	+		+	+	+	+	+	FCBGA437	CH80566EE025DW		US15WP
Z530	Silverthorne	Q2'08	1 / 2	1.60 GHz	512 KB	533 MHz FSB	2 W	45 nm	Yes			+	+		+	+	+	+	+	PBGA441		AC80566UE025DW	US15W, US15L
Z520PT	Silverthorne	Q2'08	1 / 2	1.33 GHz	512 KB	533 MHz FSB	2.2 W	45 nm	Yes			+	+		+	+	+	+	+	FCBGA437	CH80566EE014DT		US15WPT
Z510PT	Silverthorne	Q2'08	1 / 2	1.10 GHz	512 KB	400 MHz FSB	2.2 W	45 nm	Yes			+			+	+	+	+	+	FCBGA437	CH80566EC005DT		US15WPT
Z510P	Silverthorne	Q2'08	1 / 2	1.10 GHz	512 KB	400 MHz FSB	2.2 W	45 nm	Yes			+			+	+	+	+	+	FCBGA437	CH80566EC005DW		US15WP
Z510	Silverthorne	Q2'08	1 / 1	1.10 GHz	512 KB	400 MHz FSB	2 W	45 nm	Yes			+			+	+	+	+	+	FCBGA437		AC80566UC005DE	US15W
N2800	Cedarview	Q4'11	2 / 4	1.86 GHz	1 MB	2.5 GT/s DMI	6.5 W	32 nm	Yes	Yes		+		+						FCBGA559	DF8064101050503		
N2600	Cedarview	Q4'11	2 / 4	1.60 GHz	1 MB	2.5 GT/s DMI	3.5 W	32 nm	Yes	Yes		+		+						FCBGA559	DF8064101050706		
N455	Pineview	Q2'10	1 / 2	1.66 GHz	512 KB	2.5 GT/s DMI	6.5 W	45 nm	Yes	Yes		+		+						FCBGA559	AU80610006237AA		NM10
N450	Pineview	Q1'10	1 / 2	1.66 GHz	512 KB	2.5 GT/s DMI	5.5 W	45 nm	Yes	Yes		+		+						FCBGA559	AU80610004653AA		NM10
N270	Diamondville	Q2'08	1 / 2	1.60 GHz	512 KB	533 MHz FSB	2.5 W	45 nm	Yes			+								PBGA437		AU80586GE025D	945GSE

Processor Number	Code Name	Release	Cores / Threads	Clock Speed	Cache	Memory Type	Max Memory	Litho-graphy	Embedded Option	Integrated Processor Graphics	Wireless Display	HT	VT-x	IS	EIST	TMT	HD Audio	SmartIdle	Anti-Theft	Socket	Tray Part #	Tray & Reel Part #	Chipsets
INTEL® ATOM™ PROCESSOR FOR SMARTPHONE AND TABLET																							
Z3770D	Bay Trail	Q3'13	4 / 4	1.50 GHz	2 MB	DDR3L-RS 1333	2 GB	22 nm	No	Yes	Yes	+								UTFCBGA1380	FH8065301574800		
Z3770	Bay Trail	Q3'13	4 / 4	1.46 GHz	2 MB	LPDDR3-1066	4 GB	22 nm	No	Yes	Yes	+								UTFCBGA1380	FH8065301455604		
Z3740D	Bay Trail	Q3'13	4 / 4	1.33 GHz	2 MB	DDR3L-RS 1333	2 GB	22 nm	No	Yes	Yes	+								UTFCBGA1380	FH8065301574801		
Z3740	Bay Trail	Q3'13	4 / 4	1.33 GHz	2 MB	LPDDR3-1066	4 GB	22 nm	No	Yes	Yes	+								UTFCBGA1380	FH8065301455601		
Z2760	Cloverview	Q3'12	2 / 4	1.80 GHz	1 MB	LPDDR2-800	2 GB	32 nm	No	Yes		+								FC-MB4760	DG8065001313500	DG8065001313500	
Z2580	Cloverview	Q2'13	2 / 4	2.00 GHz	1 MB	LPDDR2-1066	2 GB	32 nm	No	Yes		+	+	+	+	+	+			FC-MB4760	DG8065101418902	DG8065101418901	
Z2560	Cloverview	Q2'13	2 / 4	1.60 GHz	1 MB	LPDDR2-1066	2 GB	32 nm	No	Yes		+	+	+	+	+	+				TBD		
Z2520	Cloverview	Roadmap	2 / 4	1.25 GHz	1 MB	LPDDR2-1066	2 GB	32 nm	No	Yes		+	+	+	+	+	+				TBD		

Intel® Mobile Processors

Intel® Core™ i3 Mobile Processor

Processor Number	Code Name	Release	Cores / Threads	Clock Speed	Cache	Bus	Litho-graphy	Max TDP	Embedded Option	Integrated Graphics	# of Displays	# PCIe Lanes	HT	VT-x	64	Anti	WiFi	4G	IS	EIST	TMT	Fast Flex	XDB	Socket	uFCBGA Tray Part #	uFCPGA Tray Part #	Chipsets
INTEL® CORE™ i3 MOBILE PROCESSOR SERIES																											
i3-4158U	Haswell	Q3'13	2/4	2.00 GHz	3 MB		22 nm	28 W	No	Yes	3	12	+	+	+				+	+	+		+	FCBGA1168	CL8064701526902		HM86, HM87, QM87
i3-4100U	Haswell	Q3'13	2/4	1.80 GHz	3 MB		22 nm	15 W	No	Yes	3	12	+	+	+				+	+	+		+	FCBGA1168	CL8064701476302		HM86, HM87, QM87
i3-4100M	Haswell	Q4'13	2/4	2.50 GHz	3 MB		22 nm	37 W	No	Yes	3	16	+	+	+				+	+	+		+	FCBGA1168	CW8064701486707		HM86, HM87, QM87
i3-4020Y	Haswell	Q3'13	2/4	1.50 GHz	3 MB		22 nm	11.5 W	No	Yes	3	12	+	+	+				+	+	+		+	FCBGA1168	CL8064701512402		HM86, HM87, QM87
i3-4012Y	Haswell	Q3'13	2/4	1.50 GHz	3 MB		22 nm	11.5 W	No	Yes	3	12	+	+	+				+	+	+		+	FCBGA1168	CL8064701573500		HM86, HM87, QM87
i3-4010Y	Haswell	Q3'13	2/4	1.30 GHz	3 MB		22 nm	11.5 W	No	Yes	3	12	+	+	+				+	+	+		+	FCBGA1168	CL8064701512503		HM86, HM87, QM87
i3-4010U	Haswell	Q3'13	2/4	1.70 GHz	3 MB		22 nm	15 W	No	Yes	3	12	+	+	+				+	+	+		+	FCBGA1168	CL8064701478202		HM86, HM87, QM87
i3-4005U	Haswell	Q3'13	2/4	1.70 GHz	3 MB		22 nm	15 W	No	Yes	3	10	+	+	+				+	+	+		+	FCBGA1168	TBD		HM86, HM87, QM87
i3-4000M	Haswell	Q4'13	2/4	2.40 GHz	3 MB		22 nm	37 W	No	Yes	3	16	+	+	+				+	+	+		+	FCBGA1168	CW8064701486802		HM86, HM87, QM87
i3-3229Y	Ivy Bridge	Q1'13	2/4	1.40 GHz	3 MB	5 GT/s DMI	22 nm	13 W	No	Yes	2		+	+	+	+	+	+	+	+	+	+	+	FCBGA1023	AV8063801378000		HM75, HM76, HM77, QM77, QS77, UM77
i3-3227U	Ivy Bridge	Q1'13	2/4	1.90 GHz	3 MB	5 GT/s DMI	22 nm	17 W	No	Yes	3	1	+	+	+	+	+	+	+	+	+	+	+	FCBGA1023	AV8063801119500		HM75, HM76, HM77, QM77, QS77, UM77
i3-3217UE	Ivy Bridge	Q3'12	2/4	1.60 GHz	3 MB	5 GT/s DMI	22 nm	17 W	Yes	Yes	3	1	+	+	+				+	+	+	+	+	FCBGA1023	AV8063801149500		HM65, QM67, QM77
i3-3217U	Ivy Bridge	Q2'12	2/4	1.80 GHz	3 MB	5 GT/s DMI	22 nm	35 W	No	Yes	3	1	+	+	+	+	+	+	+	+	+	+	+	FCBGA1023	AV8063801058401		HM75, HM76, HM77, QM77, QS77, UM77
i3-3130M	Ivy Bridge	Q1'13	2/4	2.60 GHz	3 MB	5 GT/s DMI	22 nm	35 W	No	Yes	3	1	+	+	+	+	+	+	+	+	+	+	+	FCBGA1023 / FCPGA988	AV8063801111900	AW8063801111500	HM75, HM76, HM77, QM77, QS77
i3-3120ME	Ivy Bridge	Q3'12	2/4	2.40 GHz	3 MB	5 GT/s DMI	22 nm	35 W	Yes	Yes	3	1	+	+	+				+	+	+	+	+	FCBGA1023 / FCPGA988	AV8063801117301	AW8063801117902	HM65, QM67, QM77
i3-3120M	Ivy Bridge	Q3'12	2/4	2.50 GHz	3 MB	5 GT/s DMI	22 nm	35 W	No	Yes	3	1	+	+	+				+	+	+	+	+	FCPGA988	AV8063801112300	AW8063801111700	HM75, HM76, HM77, QM77, QS77
i3-3115C	Gladden	Q3'13	2/4	2.50 GHz	4 MB	5 GT/s DMI	22 nm	25 W	Yes	Yes		20	+	+	+				+	+	+	+	+	FCBGA1284	CN8063801307703		
i3-3110M	Ivy Bridge	Q2'12	2/4	2.40 GHz	3 MB	5 GT/s DMI	22 nm	35 W	No	Yes	3	1	+	+	+	+	+	+	+	+	+	+	+	FCBGA1023 / FCPGA988	AV8063801032800	AW8063801032700	HM75, HM76, HM77, QM77, QS77
i3-2377M	Sandy Bridge	Q2'12	2/4	1.5 GHz	3 MB	5 GT/s DMI	32 nm	17 W	No	Yes	2	16	+	+	+	+	+	+	+	+	+	+	+	FCBGA1023	AV8062701048004		
i3-2375M	Sandy Bridge	Q1'13	2/4	1.5 GHz	3 MB	5 GT/s DMI	32 nm	17 W	No	Yes	2	16	+	+	+	+	+	+	+	+	+	+	+	FCBGA1023	AV8062701313100		
i3-2370M	Sandy Bridge	Q1'12	2/4	2.40 GHz	3 MB	5 GT/s DMI	32 nm	35 W	No	Yes	2	16	+	+	+	+	+	+	+	+	+	+	+	PPGA988		FF8062700996006	
i3-2367M	Sandy Bridge	Q4'11	2/4	1.40 GHz	3 MB	5 GT/s DMI	32 nm	17 W	No	Yes	2	16	+	+	+	+	+	+	+	+	+	+	+	FCBGA1023	AV8062701047904		
i3-2365M	Sandy Bridge	Q3'12	2/4	1.40 GHz	3 MB	5 GT/s DMI	32 nm	17 W	No	Yes	2	16	+	+	+	+	+	+	+	+	+	+	+	FCBGA1023	AV8062701313000		
i3-2350M	Sandy Bridge	Q4'11	2/4	2.30 GHz	3 MB	5 GT/s DMI	32 nm	35 W	No	Yes	2	16	+	+	+	+	+	+	+	+	+	+	+	FCBGA1023 / PPGA988	AV8062700996106	FF8062700995906	HM65, HM67, QM67, QS67
i3-2348M	Sandy Bridge	Q1'13	2/4	2.30 GHz	3 MB	5 GT/s DMI	32 nm	35 W	No	Yes	2	16	+	+	+	+	+	+	+	+	+	+	+	PPGA988		FF8062701275200	
i3-2340UE	Sandy Bridge	Q2'11	2/4	1.30 GHz	3 MB	5 GT/s DMI	32 nm	17 W	Yes	Yes	2	16	+	+	+	+	+	+	+	+	+	+	+	FCBGA1023	AV8062700849710		HM65, QM67
i3-2332M	Sandy Bridge	Q4'11	2/4	2.20 GHz	3 MB	5 GT/s DMI	32 nm	35 W	No	Yes	2	16	+	+	+	+	+	+	+	+	+	+	+	PPGA988		FF8062701084501	
i3-2330M	Sandy Bridge	Q2'11	2/4	2.20 GHz	3 MB	5 GT/s DMI	32 nm	35 W	No	Yes	2	16	+	+	+	+	+	+	+	+	+	+	+	FCBGA1023 / PPGA988	AV8062700846806	FF806270846606	HM65, HM67, QM67
i3-2330E	Sandy Bridge	Q2'11	2/4	2.20 GHz	3 MB	5 GT/s DMI	32 nm	35 W	Yes	Yes	2	16	+	+	+	+	+	+	+	+	+	+	+	FCPGA988		FF8062700849000	HM65, QM67
i3-2328M	Sandy Bridge	Q3'12	2/4	2.20 GHz	3 MB	5 GT/s DMI	32 nm	35 W	No	Yes	2	16	+	+	+	+	+	+	+	+	+	+	+	PPGA988		FF8062701275100	
i3-2312M	Sandy Bridge	Q2'11	2/4	2.10 GHz	3 MB	5 GT/s DMI	32 nm	35 W	No	Yes	2	16	+	+	+	+	+	+	+	+	+	+	+	FCPGA988		FF8062701084601	
i3-2310M	Sandy Bridge	Q1'11	2/4	2.10 GHz	3 MB	5 GT/s DMI	32 nm	35 W	No	Yes	2	16	+	+	+	+	+	+	+	+	+	+	+	FCBGA1023 / PPGA988	AV8062700999605	FF8062700999405	HM65, HM67, QM67, QS67
i3-2310E	Sandy Bridge	Q1'11	2/4	2.10 GHz	3 MB	5 GT/s DMI	32 nm	35 W	Yes	Yes	2	16	+	+	+	+	+	+	+	+	+	+	+	FCBGA1023	AV8062700849116		HM65, QM67
i3-390M	Arrandale	Q1'11	2/4	2.66 GHz	3 MB	2.5 GT/s DMI	32 nm	35 W	No	Yes	2	16	+	+	+	+	+	+	+	+	+	+	+	BGA1288/PGA988		CP80617005487AB	
i3-370M	Arrandale	Q3'10	2/4	2.40 GHz	3 MB	2.5 GT/s DMI	32 nm	35 W	No	Yes	2	16	+	+	+	+	+	+	+	+	+	+	+	PGA988		CP80617004119AL	
i3-350M	Arrandale	Q1'10	2/4	2.26 GHz	3 MB	2.5 GT/s DMI	32 nm	35 W	No	Yes	2	16	+	+	+	+	+	+	+	+	+	+	+	PGA988		CP806170041161AI	
i3-330M	Arrandale	Q1'10	2/4	2.13 GHz	3 MB	2.5 GT/s DMI	32 nm	35 W	No	Yes	2	16	+	+	+	+	+	+	+	+	+	+	+	PGA988		CP80617004122AG	
i3-330E	Arrandale	Q1'10	2/4	2.13 GHz	3 MB	2.5 GT/s DMI	32 nm	35 W	Yes	Yes	2	16	+	+	+	+	+	+	+	+	+	+	+	BGA1288	CN80617004467AC		HM55, QM57

Intel® Mobile Processors

Intel® Core™ i7 Mobile (Cont.)

Processor Number	Code Name	Release	Cores / Threads	Clock Speed	Cache	Bus	Lithography	Max TDP	Embedded Option	Integrated Graphics	# of Displays	# PCIe Lanes	Turbo	vPro	HT	VT-x	VT-d	TXT	AES	64	Anti	WiFi	4G	IS	EIST	TMT	Fast	Flex	XDB	Socket	uFCBGA Tray Part #	uFCPGA Tray Part #	Boxed Part #	Chipsets
INTEL® CORE™ i7 MOBILE PROCESSOR SERIES																																		
i7-3520M	Ivy Bridge	Q2'12	2/4	2.90 GHz	4 MB	5 GT/s DMI	22 nm	35 W	No	Yes	3	16	2.0	+	+	+	+	+	+	+	+	+	+	+	+	+	+	+	+	FCBGA1023 / FCPGA988	AV8063801028803	AW8063801028703		HM75, HM76, HM77, QM77, QS77
i7-3517UE	Ivy Bridge	Q2'12	2/4	1.70 GHz	4 MB	5 GT/s DMI	22 nm	17 W	Yes	Yes	3	16	2.0	+	+	+	+	+	+	+	+	+	+	+	+	+	+	+	+	FCBGA1023	AV8063801149401		HM75, HM76, HM77, QM77, QS77, UM77	
i7-3517U	Ivy Bridge	Q2'12	2/4	1.90 GHz	4 MB	5 GT/s DMI	22 nm	17 W	No	Yes	3	16	2.0	+	+	+	+	+	+	+	+	+	+	+	+	+	+	+	+	FCBGA1023	AV8063801057605		HM75, HM76, HM77, QM77, QS77, UM77	
i7-2860QM	Sandy Bridge	Q4'11	4/8	2.50 GHz	8 MB	5 GT/s DMI	32 nm	45 W	No	Yes	2	16	2.0	+	+	+	+	+	+	+	+	+	+	+	+	+	+	+	+	FCBGA1224 / FCPGA988	AV8062701065204	FF8062701065100		HM65, HM67, QM67
i7-2820QM	Sandy Bridge	Q1'11	4/8	2.30 GHz	8 MB	5 GT/s DMI	32 nm	45 W	No	Yes	2	16	2.0	+	+	+	+	+	+	+	+	+	+	+	+	+	+	+	+	FCBGA1224 / FCPGA988	AV8062700834912	FF8062700834709		HM65, HM67, QM67
i7-2760QM	Sandy Bridge	Q4'11	4/8	2.40 GHz	6 MB	5 GT/s DMI	32 nm	45 W	No	Yes	2	16	2.0	+	+	+	+	+	+	+	+	+	+	+	+	+	+	+	+	FCBGA1224 / FCPGA988	AV8062701065404	FF8062701065300		HM65, HM67, QM67
i7-2720QM	Sandy Bridge	Q1'11	4/8	2.20 GHz	6 MB	5 GT/s DMI	32 nm	45 W	No	Yes	2	16	2.0	+	+	+	+	+	+	+	+	+	+	+	+	+	+	+	+	FCBGA1224 / FCPGA988	AV8062700836011	FF8062700835817		HM65, HM67, QM67
i7-2715QE	Sandy Bridge	Q1'11	4/8	2.10 GHz	6 MB	5 GT/s DMI	32 nm	45 W	Yes	Yes	2	16	2.0	+	+	+	+	+	+	+	+	+	+	+	+	+	+	+	+	FCBGA1023	AV8062700843908		HM65, QM67	
i7-2710QE	Sandy Bridge	Q1'11	4/8	2.10 GHz	6 MB	5 GT/s DMI	32 nm	45 W	Yes	Yes	2	20	2.0	+	+	+	+	+	+	+	+	+	+	+	+	+	+	+	+	FCPGA988		FF8062700841002		HM65, QM67
i7-2677M	Sandy Bridge	Q2'11	2/4	1.80 GHz	4 MB	5 GT/s DMI	32 nm	17 W	No	Yes	2	16	2.0	+	+	+	+	+	+	+	+	+	+	+	+	+	+	+	+	FCBGA1023	AV8062701041005		HM65, HM67, QM67, QS67, UM67	
i7-2675QM	Sandy Bridge	Q4'11	4/8	2.20 GHz	6 MB	5 GT/s DMI	32 nm	45 W	No	Yes	2	16	2.0	+	+				+	+	+	+	+	+	+	+	+	+	+	FCBGA1224	AV8062701065604			
i7-2670QM	Sandy Bridge	Q4'11	4/8	2.20 GHz	6 MB	5 GT/s DMI	32 nm	45 W	No	Yes	2	16	2.0	+	+				+	+	+	+	+	+	+	+	+	+	+	FCPGA988		FF8062701065500		HM65, HM67, QM67
i7-2655LE	Sandy Bridge	Q1'11	2/4	2.20 GHz	4 MB	5 GT/s DMI	32 nm	25 W	Yes	Yes	2	16	2.0	+	+	+	+	+	+	+	+	+	+	+	+	+	+	+	+	FCBGA1023	AV8062700849508		HM65, QM67	
i7-2649M	Sandy Bridge	Q1'11	2/4	2.30 GHz	4 MB	5 GT/s DMI	32 nm	25 W	No	Yes	2	16	2.0	+	+	+	+	+	+	+	+	+	+	+	+	+	+	+	+	FCBGA1023	AV8062700850010		HM65, HM67, QM67, QS67, UM67	
i7-2640M	Sandy Bridge	Q4'11	2/4	2.80 GHz	4 MB	5 GT/s DMI	32 nm	35 W	No	Yes	2	16	2.0	+	+	+	+	+	+	+	+	+	+	+	+	+	+	+	+	FCBGA1023	AV8062700839107	FF8062700838905		HM65, HM67, QM67
i7-2637M	Sandy Bridge	Q2'11	2/4	1.70 GHz	4 MB	5 GT/s DMI	32 nm	17 W	No	Yes	2	16	2.0	+	+	+	+	+	+	+	+	+	+	+	+	+	+	+	+	FCBGA1023	AV8062701041105		HM65, HM67, QM67, QS67, UM67	
i7-2635QM	Sandy Bridge	Q1'11	4/8	2.00 GHz	6 MB	5 GT/s DMI	32 nm	45 W	No	Yes	2	16	2.0	+	+				+	+	+	+	+	+	+	+	+	+	+	FCBGA1224	AV8062700837205		HM65, HM67, QM67	
i7-2630QM	Sandy Bridge	Q1'11	4/8	2.00 GHz	6 MB	5 GT/s DMI	32 nm	45 W	No	Yes	2	16	2.0	+	+				+	+	+	+	+	+	+	+	+	+	+	FCPGA988		FF8062700837005		HM65, HM67, QM67
i7-2629M	Sandy Bridge	Q1'11	2/4	2.10 GHz	4 MB	5 GT/s DMI	32 nm	25 W	No	Yes	2	16	2.0	+	+	+	+	+	+	+	+	+	+	+	+	+	+	+	+	FCBGA1023	AV8062700851111		HM65, HM67, QM67, QS67, UM67	
i7-2620M	Sandy Bridge	Q1'11	2/4	2.70 GHz	4 MB	5 GT/s DMI	32 nm	35 W	No	Yes	2	16	2.0	+	+	+	+	+	+	+	+	+	+	+	+	+	+	+	+	FCBGA1023 / PPGA988	AV8062700839009	FF8062700838809		HM65, HM67, QM67, QS67
i7-2610UE	Sandy Bridge	Q1'11	2/4	1.50 GHz	4 MB	5 GT/s DMI	32 nm	17 W	Yes	Yes	2	16	2.0	+	+	+	+	+	+	+	+	+	+	+	+	+	+	+	+	FCBGA1023	AV8062700849607		HM65, QM67	
i7-660UE	Arrandale	Q1'10	2/4	1.33 GHz	4 MB	2.5 GT/s DMI	32 nm	18 W	Yes	Yes	2	16	+	+	+	+	+	+	+	+	+	+	+	+	+	+	+	+	BGA1288	CN80617006204AA		HM57, QM57, QS57		
i7-620UE	Arrandale	Q1'10	2/4	1.60 GHz	4 MB	2.5 GT/s DMI	32 nm	18 W	Yes	Yes	2	1	+	+	+	+	+	+	+	+	+	+	+	+	+	+	+	+	+	BGA1288	CN80617004458AB		HM55, QM57	
i7-620M	Arrandale	Q1'10	2/4	2.66 GHz	4 MB	2.5 GT/s DMI	32 nm	35 W	Yes	Yes	2	16	+	+	+	+	+	+	+	+	+	+	+	+	+	+	+	+	+	PGA988		CP80617003981AH		HM55, HM57, PM55, QM57, QS57
i7-620LE	Arrandale	Q1'10	2/4	2.00 GHz	4 MB	2.5 GT/s DMI	32 nm	25 W	Yes	Yes	2	1	+	+	+	+	+	+	+	+	+	+	+	+	+	+	+	+	+	BGA1288	CN80617004455AB		HM55, QM57	
i7-610E	Arrandale	Q1'10	2/4	2.53 GHz	4 MB	2.5 GT/s DMI	32 nm	35 W	Yes	Yes	2	16	+	+	+	+	+	+	+	+	+	+	+	+	+	+	+	+	+	BGA1288	CN80617005745AB		HM55, QM57	

Intel® Server Processors & Chipsets

Intel® Xeon® Processor 3000 Sequence

Processor Number	Code Name	Release	Cores / Threads	Clock Speed	Cache	Bus	Litho-graphy	Max TDP	Embedded Option	# PCIe Lanes	Max CPU	Socket	Turbo	HT	VT-x	VT-d	TXT	AES	64	IS	EIST	DBS	TMT	XDB	Tray Part #	Boxed Part #	Chipsets	
INTEL® XEON® PROCESSOR 3000 SEQUENCE																												
X3480	Lynnfield	Q2'10	4 / 8	3.06 GHz	8 MB	2.5 GT/s DMI	45 nm	95 W	No	1	1	LGA1156	+	+	+	+	+	+	+	+	+	+	+	+	+	BV80605002505AH	BX80605X3480	3400, 3420, 3450
X3470	Lynnfield	Q3'09	4 / 8	2.93 GHz	8 MB	2.5 GT/s DMI	45 nm	95 W	No	1	1	LGA1156	+	+	+	+	+	+	+	+	+	+	+	+	+	BV80605001905AJ	BX80605X3470	3400, 3420, 3450
X3460	Lynnfield	Q3'09	4 / 8	2.80 GHz	8 MB	2.5 GT/s DMI	45 nm	95 W	No	1	1	LGA1156	+	+	+	+	+	+	+	+	+	+	+	+	+	BV80605001908AL	BX80605X3460	3400, 3420, 3450
X3450	Lynnfield	Q3'09	4 / 8	2.66 GHz	8 MB	2.5 GT/s DMI	45 nm	95 W	Yes	1	1	LGA1156	+	+	+	+	+	+	+	+	+	+	+	+	+	BV80605001911AQ	BX80605X3450	3400, 3420, 3450
X3440	Lynnfield	Q3'09	4 / 8	2.53 GHz	8 MB	2.5 GT/s DMI	45 nm	95 W	No	1	1	LGA1156	+	+	+	+	+	+	+	+	+	+	+	+	+	BV80605002517AQ	BX80605X3440	3400, 3420, 3450
X3430	Lynnfield	Q3'09	4 / 4	2.40 GHz	8 MB	2.5 GT/s DMI	45 nm	95 W	Yes	1	1	LGA1156	+	+	+	+	+	+	+	+	+	+	+	+	+	BV80605001914AG	BX80605X3430	3400, 3420, 3450
W3690	Gulftown	Q1'11	6 / 12	3.46 GHz	12 MB	6.40 GT/s QPI	32 nm	130 W	No		1	FCLGA1366	+	+	+					+	+	+	+	+	+	AT80613005931AB		
W3680	Westmere-EP	Q1'10	6 / 12	3.33 GHz	12 MB	6.40 GT/s QPI	32 nm	130 W	No		1	FCLGA1366	+	+	+					+	+	+	+	+	+	AT80613003543AF	BX80613W3680	
W3670	Westmere-EP	Q3'10	6 / 12	3.20 GHz	12 MB	4.80 GT/s QPI	32 nm	130 W	No		1	FCLGA1366	+	+	+					+	+	+	+	+	+	AT80613005490AC		
W3580	Bloomfield	Q3'09	4 / 8	3.33 GHz	8 MB	6.40 GT/s QPI	45 nm	130 W	No		1	FCLGA1366	+	+	+					+	+	+	+	+	+	AT80601002274AB	BX80601W3580	X58
W3570	Bloomfield	Q1'09	4 / 8	3.20 GHz	8 MB	6.40 GT/s QPI	45 nm	130 W	No		1	FCLGA1366	+	+	+					+	+	+	+	+	+	AT80601000918AB	BX80601W3570	X58
W3565	Bloomfield	Q4'09	4 / 8	3.20 GHz	8 MB	4.80 GT/s QPI	45 nm	130 W	No		1	FCLGA1366	+	+	+					+	+	+	+	+	+	AT80601002727AB	BX80601W3565	X58
W3550	Bloomfield	Q3'09	4 / 8	3.06 GHz	8 MB	4.80 GT/s QPI	45 nm	130 W	No		1	FCLGA1366	+	+	+					+	+	+	+	+	+	AT80601002112AB	BX80601W3550	X58
W3540	Bloomfield	Q1'09	4 / 8	2.93 GHz	8 MB	4.80 GT/s QPI	45 nm	130 W	No		1	FCLGA1366	+	+	+					+	+	+	+	+	+	AT80601000921AB	BX80601W3540	X58
W3530	Bloomfield	Q1'10	4 / 8	2.80 GHz	8 MB	4.80 GT/s QPI	45 nm	130 W	No		1	FCLGA1366	+	+	+					+	+	+	+	+	+	AT80601000897AB	BX80601W3530	X58
W3520	Bloomfield	Q1'09	4 / 8	2.66 GHz	8 MB	4.80 GT/s QPI	45 nm	130 W	No		1	FCLGA1366	+	+	+					+	+	+	+	+	+	AT80601000741AB	BX80601W3520	X58

Intel® Server Processors & Chipsets

Intel® Xeon Phi™ Coprocessors, Intel® Itanium® Processor (Server), Intel® Atom™ Processor for Storage & Intel® Atom™ Processor for Server

Processor Number	Code Name	Release	# of Cores	Clock Speed	Cache	Expansion Options	Litho-graphy	"Max	Max Memory	Ordering Code	Ordering Information
TDP"											
7120X	Knights Corner	Q2'13	61	1.238 GHz	16 GB	PCIe v2.0	22 nm	300 W	16 GB	SC7120X	PCIe Card, No Thermal Solution
7120P	Knights Corner	Q2'13	61	1.238 GHz	16 GB	PCIe v2.0	22 nm	300 W	16 GB	SC7120P	PCIe Card, Passively Cooled
5120D	Knights Corner	Q2'13	60	1.053 MHz	8 GB	PCIe v2.0	22 nm	245 W	8 GB	SC5120D	Dense Form, No Thermal Solution
5110P	Knights Corner	Q2'13	60	1.053 MHz	8 GB	PCIe v2.0	22 nm	225 W	8 GB	SC5110P	PCIe Card, Passively Cooled
3120P	Knights Corner	Q2'13	57	1.100 GHz	6 GB	PCIe v2.0	22 nm	300 W	6 GB	SC3120P	PCIe Card, Passively Cooled
3120A	Knights Corner	Q2'13	57	1.100 GHz	6 GB	PCIe v2.0	22 nm	300 W	6 GB	SC3120A	PCIe Card, Actively Cooled

Processor Number	Code Name	Release	Cores / Threads	Clock Speed	Cache	Bus	Litho-graphy	Max TDP	Embedded Option	ECC Memory Sup	Graphics	# PCIe Lanes	Socket	Turbo	HT	VT-x	VT-d	VT-i	Sstep	DBS	TMIT	XDB	EPT	Tray Part #	Compatible Chipset	
INTEL® ITANIUM® PROCESSOR (SERVER)																										
9560	Poulson	Q4'12	8 / 16	2.53 GHz	32 MB	6.4 GT/s QPI	32 nm	170 W	No	Yes	No		LGA1248	+	+	+	+	+	+						CM8063101049806	
9550	Poulson	Q4'12	4 / 8	2.40 GHz	32 MB	6.4 GT/s QPI	32 nm	170 W	No	Yes	No		LGA1248	+	+	+	+	+	+						CM8063101049807	
9540	Poulson	Q4'12	8 / 16	2.13 GHz	24 MB	6.4 GT/s QPI	32 nm	170 W	No	Yes	No		LGA1248	+	+	+	+	+	+						CM8063101049718	
9520	Poulson	Q4'12	4 / 8	1.73 GHz	20 MB	6.4 GT/s QPI	32 nm	130 W	No	Yes	No		LGA1248	+	+	+	+	+	+						CM8063101049716	
9340	Tukwila	Q1'10	4 / 8	1.60 GHz	20 MB	4.80 GT/s QPI		185 W	No				FCLGA1248	+	+	+	+			+	+			LW80603003240AA	7500	
9150N	Montvale	Q4'07	2 / 2	1.60 GHz	24 MB	533 MHz FSB	90 nm	104 W	No				PPGA611	+	+					+				NE80567KE025015	E8870	
9150M	Montvale	Q4'07	2 / 2	1.66 GHz	24MB	667 MHz FSB	90 nm	104 W	No				PPGA611	+	+					+				NE80567KF028015	E8870	
9140N	Montvale	Q4'07	2 / 2	1.60 GHz	18 MB	533 MHz FSB	90 nm	104 W	No				PPGA611	+	+					+				NE80567KE025009	E8870	
9140M	Montvale	Q4'07	2 / 2	1.66 GHz	18 MB	667 MHz FSB	90 nm	104 W	No				PPGA611	+	+					+				NE80567KF028009	E8870	
9130M	Montvale	Q4'07	2 / 2	1.66 GHz	8 MB	667 MHz FSB	90 nm	104 W	No				PPGA611		+									NE80567KF0288M	E8870	
9120N	Montvale	Q4'07	2 / 2	1.42 GHz	12 MB	533 MHz FSB	90 nm	104 W	No				PPGA611	+	+									NE80567KEB17003	E8870	
9110N	Montvale	Q4'07	1 / 1	1.60 GHz	12 MB	533 MHz FSB	90 nm	75 W	No				PPGA611		+									NE80567KE025003	E8870	
INTEL® ATOM™ PROCESSOR FOR SERVER																										
S1260	Centerton	Q4'12	2 / 4	2.00 GHz	1 MB		32 nm	8.5 W	No	Yes		8	FCBGA1283		+	+									DH80S1260	
S1240	Centerton	Q4'12	2 / 4	1.60 GHz	1 MB		32 nm	6.1 W	No	Yes		8	FCBGA1283		+	+									DH80S1240	
S1220	Centerton	Q4'12	2 / 4	1.60 GHz	1 MB		32 nm	8.1 W	No	Yes		8	FCBGA1283		+	+									DH80S1220	
C2750	Avoton	Q3'13	8 / 8	2.40 GHz	4 MB		22 nm	20 W	No	Yes		16	FCBGA1283	+	+										FH8065401488906	
C2730	Avoton	Q3'13	8 / 8	1.70 GHz	4 MB		22 nm	12 W	No	Yes		8	FCBGA1283	+	+										FH8065401488919	
C2550	Avoton	Q3'13	8 / 8	2.40 GHz	2 MB		22 nm	14 W	No	Yes		16	FCBGA1283	+	+										FH8065401488912	
C2530	Avoton	Q3'13	8 / 8	1.70 GHz	2 MB		22 nm	9 W	No	Yes		8	FCBGA1283	+	+										FH8065401488915	
C2350	Avoton	Q3'13	8 / 8	1.70 GHz	1 MB		22 nm	6 W	No	Yes		4	FCBGA1283	+	+										FH8065401488914	

Intel® Server Motherboards

Single Socket, Compute Modules, & 4-Socket Server Boards

Model	Code Name	Release	EOL Date	Board Form Factor	Chassis Form Factor	Socket	Max CPU	Embedded Option	Max TDP	# of DIMMs	Max Memory	Integ Grpplx	Expansion Options										I/O Specifications							OEM Pack Part # BB = Bulk 10 pack DB = Disty 5 pack	Chipset				
													# PCIe Lanes	PCIe Gen3 x4	PCIe Gen3 x8	PCIe Gen3 x16	IO Exp Gen3 x8	PCIe Gen2 x4	PCIe Gen2 x8	IO Exp Gen2 x4	IO Exp Gen2 x8	PCIe Gen1 x1	IO Exp Gen1 x4	# USB	# of eSATA	# SATA	RAID	# Serial	Integrated LAN			# LAN	# SAS	USB SSD	Single Part #
SINGLE SOCKET SERVER BOARDS																																			
S1600JP4	Jackson Pass	Q4'12	Q4'17	Custom (6.8" x 13.8")	Rack	Socket R	1	Yes	135 W	8	256 GB	Yes	40		2										1	7	10	up to s/w RAID 5	1	4x 1GbE	4	4		BBS1600JP4	C602
S1600JP2	Jackson Pass	Q3'12	Q4'17	Custom (6.8" x 13.8")	Rack	Socket R	1	Yes	135 W	8	256 GB	Yes	40		2										1	7	10	up to s/w RAID 5	1	2x 1GbE	2	4		BBS1600JP2	C602
S1400SP4	Salmon Pass	Q3'12	Q3'17	SSI ATX (12" x 9.6")	Rack	Socket B2	1	Yes	95 W	6	96 GB	Yes		1	1		1							6	8		s/w 0/1/10/5	2	2x 1GbE	2		Yes		DBS1400SP4	
S1400SP2	Salmon Pass	Q3'12	Q3'17	SSI ATX (12" x 9.6")	Rack	Socket B2	1	Yes	95 W	6	96 GB	Yes		1	1		1							6	7		s/w 0/1/10/5	2	2x 1GbE	2		Yes		DBS1400SP2	
S1400FP4	Freemont Pass	Q3'12	Q3'15	SSI ATX (12" x 9.6")	Rack or Pedestal	Socket B2	1	No	95 W	6	96 GB	Yes		1	1	1					1		13	6		s/w 0/1/10/5	2	4x 1GbE	4		Yes		DBS1400FP4		
S1400FP2	Freemont Pass	Q3'12	Q3'15	SSI ATX (12" x 9.6")	Rack or Pedestal	Socket B2	1	No	95 W	6	96 GB	Yes		1	1	1				1			4	8		s/w 0/1/10/5	2	2x 1GbE	2		Yes		BBS1400FP2 DBS1400FP2		
S1200V3RPS	Rainbow Pass	Q2'13	1H'15	µATX	Pedestal	LGA1150	1	No	95 W	4	32 GB	Yes	16		1		1	1					4	6		0,1,10,5	1	2x 1GbE	2		Yes		DBS1200V3RPS		
S1200V3RPO	Rainbow Pass	Q2'13	1H'15	µATX	Rack	LGA1150	1	No	95 W	4	32 GB	Yes	16		1		1	1					4	6		0,1,10,5	1	2x 1GbE	2		Yes		BBS1200V3RPO DBS1200V3RPO		
S1200V3RPM	Rainbow Pass	Q2'13	1H'17	µATX	Rack	LGA1150	1	Yes	95 W	4	32 GB	Yes	16		1		1	1					4	6		0,1,10,5	1	2x 1GbE	2		Yes		BBS1200V3RPM DBS1200V3RPM		
S1200V3RPL	Rainbow Pass	Q2'13	1H'17	µATX	Pedestal	LGA1150	1	Yes	95 W	4	32 GB	Yes	16		1		1	1					4	6		0,1,10,5	1	2x 1GbE	2		Yes		BBS1200V3RPL DBS1200V3RPL		
S1200KPR	Kenosha Pass	Q2'12	1H'14	miniITX		LGA1155	1	No	95 W	2	16 GB	Yes			1								4	4					2x 1GbE	2			BBS1200KPR DBS1200KPR		
S1200BTSR	Beartooth Pass	Q2'12	2H'14	µATX	Rack or Pedestal	LGA1155	1	No	4	32 GB	Yes	4					1	2					7	6		0,1,10,5	1	2x 1GbE	2			S1200BTSR	BBS1200BTSR DBS1200BTSR	C204	
S1200BTLRM	Beartooth Pass	Q2'12	2H'14	ATX	Rack or Pedestal	LGA1155	1	No	4	32 GB	Yes	4					3	1		1			9	6		s/w 0/1/10/5	2	2x 1GbE	2			S1200BTLRM		C204	
S1200BTLR	Beartooth Pass	Q2'11	2H'14	ATX	Rack or Pedestal	LGA1155	1	No	4	32 GB	Yes	4					3	1					9	6		0,1,10,5	2	2x 1GbE	2			S1200BTLR	BBS1200BTLR DBS1200BTLR	C204	
INTEL® COMPUTE MODULES																																			
MFS5520VIR	Victor Island	Q2'09	1H 2013	1U	Rack or Pedestal	LGA1366	2		95 W	12	192 GB	Yes											4			0,1,1E,5,6,10,50,60		GbE	2			MFS5520VIR	3 Pack: MFS5520VIR	5520	
MFS2600KI	LOD: 11/01/13	Q3'12	Q2'13	1U, custom	Pedestal	Socket R	2	No	95 W	16	250 GB	Yes											4			0,1,1E,5,6,10,50,60			2		Yes		MFS2600KI		C602
HNS2600WPQ	Washington Pass	Q1'12	Q3'17		Rack	Socket R	2	No	135 W	16	512 GB	Yes			1	1							5	6		up to s/w 5	1	2x 1GbE	2	4	No		HNS2600WPQ		C602
HNS2600WPF	Washington Pass	Q2'12	Q2'17		Rack	Socket R	2	No	135 W	16	512 GB	Yes			1	1							5	6		up to s/w 5	1	2x 1GbE	2	4	No		HNS2600WPF		C602
HNS2600WP	Washington Pass	Q2'12	Q3'17		Rack	Socket R	2	No	135 W	16	512 GB	Yes			1	1							5	6		up to s/w 5	1	2x 1GbE	2	4	No		HNS2600WP		C602
HNS2600JFQ	Jefferson Pass	Q1'12	Q2'17		Rack	Socket R	2	No	135 W	8	256 GB	Yes			1	1							5	6		up to s/w 5	1	2x 1GbE	2	4	No		HNS2600JFQ		C602
HNS2600JFF	Jefferson Pass	Q1'12	Q2'17		Rack	Socket R	2	No	135 W	8	256 GB	Yes			1	1							5	6		up to s/w 5	1	2x 1GbE	2	4	No		HNS2600JFF		C602
HNS2600JF	Jefferson Pass	Q1'12	Q2'17		Rack	Socket R	2	No	135 W	8	256 GB	Yes			1	1							5	6		up to s/w 5	1	2x 1GbE	2	4	No		HNS2600JF		C602
HNS2600LPQ	Lincoln Pass	Q2'12	Q3'17	Custom (6.8" x 16.6")	Rack	Socket B2	2	No	95 W	12	384 GB	Yes	16	0	2	0	1						2	5		up to s/w 5	1	2x 1GbE	2		No		HNS2600LPQ	BBS2400LPQ	C602
HNS2400LPF	Lincoln Pass	Q2'12	Q3'17		Rack	Socket B2	2	No	95 W	12	384 GB	Yes			1	1							2	5		up to s/w 5	1	2x 1GbE	2		No		TBD		C602
HNS2400LP	Lincoln Pass	Q2'12	Q3'17		Rack	Socket B2	2	No	95 W	12	384 GB	Yes			1	1							2	5		up to s/w 5	1	2x 1GbE	2		No		HNS2400LP		C602
INTEL® 4-SOCKET SERVER BOARDS																																			
S4600LT2	Lizard Head Pass	Q1'13	Q1'16	Custom (16.7" x 20")	Rack	Socket R	4	Yes	130 W	48	1500 GB	Yes	128		6	2							6	0	10	up to s/w 5	1	2x 1GbE	2	8	Yes		S4600LT2		C602
S4600LH2	Lizard Head Pass	Q1'13	Q1'16	Custom (16.7" x 20")	Rack	Socket R	4	Yes	130 W	48	1500 GB	Yes	128		6	2							6	10		up to s/w 5	1	2x 1GbE	2	8	Yes		S4600LH2		C602

Intel® Server Motherboards

Dual Socket Server Boards

Model	Code Name	Release	EOL Date	Board Form Factor	Chassis Form Factor	Socket	Max CPU	Embedded Option	Max TDP	# of DIMMs	Max Memory	Integ Grphx	Expansion Options										I/O Specifications - # of Ports						OEM Pack Part # BB = Bulk 10 pack DB = Disty 5 pack						
													# PCI Express Lanes	PCIe Gen3 x4	PCIe Gen3 x8	PCIe Gen3 x16	IO Exp Gen3 x8	PCIe Gen2 x4	PCIe Gen2 x8	PCIe Gen2 x16	IO Exp Gen2 x4	IO Exp Gen2 x8	PCIe Gen1 x1	PCIe Gen1 x8	IO Exp Gen1 x4	# USB	# SATA	RAID		# Serial	Integrated LAN	# LAN	# SAS	Embedded USB SSD	Single Part #
DUAL SOCKET SERVER BOARDS																																			
S5520URT	Urbanna	Q1'09	Q4'13	SSI TEB-leveraged (12" x 13")	Rack	LGA1366	2	Yes	130 W	12	192 GB	Yes								3	1					1	5	6	0,1	2	Dual, GbE	2		S5520URT	
S5520UR	Urbanna	Q1'09	Q4'13	SSI TEB-leveraged (12" x 13")	Rack	LGA1366	2	Yes	130 W	12	192 GB	Yes								3	1					1	5	6	0,1	2	Dual, GbE	2			BB5520URR
S5520HCT	Hanlan Creek	Q1'10	Q1'14	SSI EEB (12" x 13")	Pedestal	LGA1366	2	No	130 W	12	192 GB	Yes								3	1				1	8	6	0,1	2	Dual, GbE	2		S5520HCT		
S5520HC	Hanlan Creek	Q1'09	Q4'13	SSI TEB-leveraged (12" x 13")	Pedestal	LGA1366	2	Yes	130 W	12	192 GB	Yes								3	1				1	4	6	0,1	2	Dual, GbE	2		S5520HCR	BB5520HC	
S550HCV	Hayden Valley	Q2'09	Q4'13	SSI EEB (12" x 13")	Pedestal	LGA1366	2	Yes	130 W	9	144 GB	Yes								2	1				1	8	6	0,1	2	Dual, GbE	2		S5500HCVR	BB5500HCVR	
S2600CP2IOC	Canoe Pass	Q1'12	Q1'17	SSI EEB (12" x 13")	Pedestal	Socket R	2	Yes	135 W	16	512 GB	Yes													5	14	up to s/w 5	2	Dual, GbE	2	8	Yes		DBS2600CP2IOC	
S2600CP4IOC	Canoe Pass	Q1'12	Q1'17	SSI EEB (12" x 13")	Pedestal	Socket R	2	Yes	135 W	16	512 GB	Yes		5	1										5	14	up to s/w 5	2	Quad, GbE	4	8	Yes		DBS2600CP4IOC	
S2600CP2J	Canoe Pass	Q1'12	Q1'17	SSI EEB (12" x 13")	Pedestal	Socket R	2	Yes	135 W	16	512 GB	Yes		5	1										5	6	up to s/w 5	2	Dual, GbE	2		Yes		BBS2600CP2J	
S2600WPQ	Washington Pass	Q1'12	Q3'15	Custom (6.8" x 18.9")	Rack	Socket R	2	No	135 W	8	500 GB	Yes	64		4	1									5	6	up to s/w 5	1	Dual, GbE	2				BBS2600WPQ	
S2600WPF	Washington Pass	Q1'12	Q3'15	Custom (6.8" x 18.9")	Rack	Socket R	2	No	135 W	8	500 GB	Yes	64		4	1									5	6	up to s/w 5	1	Dual, GbE	2					BBS2600WPF
S2600WP	Washington Pass	Q1'12	Q3'15	Custom (6.8" x 18.9")	Rack	Socket R	2	No	135 W	8	500 GB	Yes	72		1	4	1								5	6	up to s/w 5	1	Dual, GbE	2	4				BBS2600WP
S2600JFQ	Jefferson Pass	Q1'12	Q2'15	Custom (6.42" x 17.7")	Rack	Socket R	2	No	135 W	8	250 GB	Yes	48		3	1									5	6	up to s/w 5	1	Dual, GbE	3	4				BBS2600JFQ
S2600JFF	Jefferson Pass	Q1'12	Q3'15	Custom (6.42" x 17.7")	Rack	Socket R	2	No	135 W	8	250 GB	Yes	48		3	1									5	6	up to s/w 5	1	Dual, GbE	2	4				BBS2600JFF
S2600JF	Jefferson Pass	Q1'12	Q2'15	Custom (6.42" x 17.7")	Rack	Socket R	2	No	135 W	8	250 GB	Yes	48		3	1									5	6	up to s/w 5	1	Dual, GbE	2	4				BBS2600JF
S2600IP4	Iron Pass	Q1'12	Q1'17	Custom (14.2" x 15")	Rack or Pedestal	Socket R	2	Yes	135 W	16	500 GB	Yes			6	1	1	1							5	4	up to s/w 5	2	Quad, GbE	4	8	Yes		S2600IP4	
S2600GZ	Grizzly Pass	Q1'12	Q1'15	Custom (16.5" x 16.5")	Rack	FCLGA2011	2	Yes	130 W	24	768 GB	Yes					2		6			1		7	10	up to s/w 5	2	Quad, GbE	4		Yes	S2600GZ4	BBS2600GZ		
S2600GL	Grizzly Pass	Q1'12	Q1'15	Custom (16.5" x 16.5")	Rack	FCLGA2011	2	Yes	130 W	16	500 GB	Yes					2		6			1		7	10	up to s/w 5	2	Quad, GbE	4		Yes	S2600GL4	BBS2600GL		
S2600CP4	Canoe Pass	Q1'12	Q1'17	SSI EEB (12" x 13")	Pedestal	Socket R	2	Yes	130 W	16	500 GB	Yes		5	1										5	14	up to s/w 5	2	Quad, GbE	4	8	Yes	S2600CP4	BBS2600CP4	
S2600CP2	Canoe Pass	Q1'12	Q1'17	SSI EEB (12" x 13")	Pedestal	Socket R	2	Yes	130 W	16	500 GB	Yes		5	1										5	14	up to s/w 5	2	Dual, GbE	2	8	Yes	S2600CP2	BBS2600CP2	
S2600COEIOC	Copper Pass	Q1'12	Q1'17	SSI EEB (12" x 13")	Pedestal	Socket R	2	Yes	150 W	16	500 GB	Yes		1	4	1									5	10	up to s/w 5	2	Quad, GbE		8	Yes		DBS2600COEIOC	
S2600COE	Copper Pass	Q1'12	Q1'17	SSI EEB (12" x 13")	Pedestal	Socket R	2	Yes	150 W	16	500 GB	Yes	84		1	4	1								5	10	up to s/w 5	2	Quad, GbE	4	8	Yes	S2600COE	BBS2600COE	
S2600C04	Copper Pass	Q1'12	Q1'17	SSI EEB (12" x 13")	Pedestal	Socket R	2	Yes	135 W	16	500 GB	Yes	84		1	4	1								5	10	up to s/w 5	2	Quad, GbE	4	4	Yes	S2600C04	BBS2600C04	
S2400SC2	Swiftcurrent Pass	Q2'12	Q2'15	SSI CEB (12" x 10.5")	Rack or Pedestal	Socket B2	2	No	95 W	8	128 GB	Yes		1	1	1						1			4	6	s/w 0/1/10/5	2	2x 1GbE	2	0	Yes		BBS2400SC2 DBS2400SC2	
S2400LP	Lincoln Pass	Q2'12	Q3'15	Custom (6.8" x 16.6")	Rack	Socket B2	2	No	95 W	12	384 GB	Yes	24	0	1	1	1								2	5	up to s/w 5	1	2x 1GbE	2		No		BBS2400LP	
S2400GP2	Granite Pass	Q2'12	Q2'17	SSI EEB (12" x 13")	Pedestal	Socket B2	2	No	95 W	6	384 GB	Yes		2	1	2	1								4	6	s/w 0/1/10/5	2	2x 1GbE	2		Yes		BBS2400GP2 DBS2400GP2	
S2400EP4	Eagle Pass	Q2'12	Q2'17	SSI CEB (12" x 10.5")	Rack	Socket B2	2	Yes	95 W	8	128 GB	Yes			1	1							1		4	2	s/w 0/1/10/5	1	4x 1GbE	4	0	No		BBS2400EP4	
S2400EP2	Eagle Pass	Q2'12	Q2'17	SSI CEB (12" x 10.5")	Rack	Socket B2	2	Yes	95 W	8	128 GB	Yes			1	1							1		4	2	s/w 0/1/10/5	1	2x 1GbE	2	0	No		DBS2400EP2	
S2400BB4	Black Bear Pass	Q3'12	Q3'15	Custom (13.5" x 13.5")	Rack	Socket B2	2	No	95 W	12	384 GB	Yes		0	6	2	0						1		3	2	up to s/w 5	2	4x 1GbE	4	8	Yes	S2400BB4		

Intel® Server Systems

2U Storage Systems

Model	Launch	Limited 3-yr Warranty	Chassis Dimensions	Power Supply	# of P/S	Redundant P/S	Redundant Fans	2.5" HDD Support	Backplanes	Expansion Options											I/O Specifications							Ordering Part #		
										PCI 32/33	PCIe x4 Gen3	PCIe x8 Gen3	PCIe x16 Gen3	IO Exp x8 Gen3	Int IO Exp x8 Gen3	PCIe x4 Gen2	PCIe x8 Gen2	IO Exp x4 Gen1	PCIe x8 Gen1	# USB Ports	# SATA Ports	RAID	# Serial Ports	Integrated LAN	# LAN Ports	# Integrated SAS	Emb USB SSD			
2U RACK STORAGE SYSTEMS																														
JBOD2312S2SP	Q1'13	Yes	3.44" x 16.93" x 24.95"	460 W	1	Yes	Yes	12 x 3.5" hot-swap	Incl.																					JBOD2312S2SP
JBOD2224S2SP	Q3'13	Yes	3.44" x 16.93" x 24.95"	460 W	1	Yes	Yes	24 x 2.5" hot-swap Incl.	Incl.																					TBD
JBOD2224S2DP	Q1'13	Yes	3.44" x 16.93" x 24.95"	460 W	2	Yes	Yes	24 x 2.5" hot-swap Incl.	Incl.																					JBOD2224S2DP

4U and 6U Server Systems

Model	Code Name	Launch	EOL Date	Limited 3-yr Warranty	Chassis Dimensions	Socket	Power Supply	# of Heatsinks	Heatsink Included	2.5" HDD Support	3.5" HDD Support	# of DIMMs	Max Memory	Int Graphics	Max CPU	Expansion Options											I/O Specifications							Ordering Part # (Add suffix "NA" for North-American Power Cable)			
																PCI 32/33	PCIe x4 Gen3	PCIe x8 Gen3	PCIe x16 Gen3	IO Expansion Mod	Int IO Exp x8 Gen3	PCIe x4 Gen2	PCIe x8 Gen2	PCIe x16 Gen2	PCIe x8 Gen1	# USB Ports	# SATA Ports	RAID	# Serial Ports	Integrated LAN	# LAN Ports	# Integrated SAS	Emb USB SSD				
4U RACK OR PEDESTAL SERVER SYSTEMS																																					
P4308SC2MHGC	Swiftcurrent Pass	Q2'12	Q2'15	Yes	6.81" x 24.9" x 17.24"	Socket B2	750 W	2	Yes	8 Hotswap	8 Hotswap	8	128 GB	Yes	2	1	1	1	1	1	1		1		10	14	sw 0,1,10,5	2	Dual, Gbe	2	0	Yes	P4308SC2MHGC				
P4308RPLSHDR	Rainbow Pass	Q2'13	Yes	17.24" x 21.5" x 6.81"	LGA1150	460 W		Yes	8 Hotswap	8 Hotswap	4	32 GB	Yes	1										6	6	0, 1, 5, 10	1	Dual, Gbe	2	0	Yes	P4308RPLSHDR					
P4308IP4LHJC	Iron Pass	Q1'12	Q1'17	Yes	6.81" x 17.24" x 26.9"	Socket R	1200 W		Yes	8 Hotswap	8 Hotswap	16	500 GB	Yes	2			6	1	2				5	10	up to sw 5	2	Quad, Gbe	4	8	Yes	P4308IP4LHJC					
P4308CP4MHGC	Canoe Pass	Q1'12	Q1'17	Yes	6.81" x 17.24" x 24.9"	Socket R	750 W		Yes	8 Hotswap	8 Hotswap	16	500 GB	Yes	2			5	1					5	14	0,1,10 (5 opt)	2	Quad, Gbe	4	8	Yes	P4308CP4MHGC					
P4308CP4MHEN	Canoe Pass	Q1'12	Q1'17	Yes	6.81" x 17.24" x 24.9"	Socket R	550 W		Yes	8 Hotswap	8 Hotswap	16	500 GB	Yes	2			5	1					5	14	0,1,10 (5 opt)	2	Quad, Gbe	4	8	Yes	P4308CP4MHEN					
P4304SC2SFEN	Swiftcurrent Pass	Q2'12	Q2'15	Yes	6.81" x 21.5" x 17.24"	Socket B2	550 W	2	Yes	4 Fixed	4 Fixed	8	128 GB	Yes	2	1	1	1	1				1	10	14	sw 0,1,10,5	2	Dual, Gbe	2	0	Yes	P4304SC2SFEN					
P4304BTSSFCNR	Beartooth Pass	Q2'12	1H'14	Yes	6.9" x 17.24" x 21.5"	LGA1155	365 W	1	No	4 Fixed	4 Fixed	4	32 GB	Yes	1	1							1	1	1	7	6		2	Dual, Gbe	2	0		P4304BTSSFCNR			
P4304BTLSHCNR	Beartooth Pass	Q2'12	1H'14	Yes	17.24" x 21.5" x 6.9"	LGA1155	365 W		No	4 Hotswap	4 Hotswap	4	32 GB	Yes	1	1											3	1	9	6		2	Dual, Gbe	2		P4304BTLSHCNR	
P4304BTLSCNR	Beartooth Pass	Q2'12	1H'14	Yes	17.24" x 21.5" x 6.9"	LGA1155	365 W		No	4 Fixed	4 Fixed	4	32 GB		1	1												3	1	9	6		2	Dual, Gbe	2		P4304BTLSCNR
P4216IP4LHJC	Iron Pass	Q1'12	Q1'17	Yes	6.81" x 17.24" x 26.9"	Socket R	1200 W		Yes	16 Hotswap		16	500 GB	Yes	2			6	1	2				5	10	up to sw 5	2	Quad, Gbe	4	8	Yes	P4216IP4LHJC					
6U PEDESTAL (RACKABLE) SERVER SYSTEMS																																					
SC5650HCBRRP	Hanlan Creek	Q4'09	2H'13	Yes	17.8" x 9.256" x 19"	LGA1366	600 W		No	Up to 6 hot-swap 3.5" SAS / SATA drives with RAID controller		12	192 GB	Yes	2							1			3	1	1	6	6	upg.	2	Dual, Gbe	2			SC5650HCBRRP	

Intel® Server Heatsink Options

Product Name	Launch Date	Description	Includes	Server - Chassis Compatibility
1U HEAT SINK OPTIONS				
FXXE91X91HS	Q1'12	1U Heat Sink	(2) 91.5 x 91.5 mm passive Extruded Al heatsink	S2600JF, S2600GL
FXXE90X90HS	Q2'12	1U Heat Sink	(2) 90 x 90 mm 1U passive Extruded Al heatsink	S1400SP, S2400LP, S22400EP, S2400BB
FXXE84X106HS	Q2'12	1U Heat Sink	(2) 84 x 106 mm 1U passive Extruded Al heatsink	S2600WP
FXXA91X91HS	Q1'12	1U Heat Sink	(2) 91.5 x 91.5 mm 1U passive Cu/Al heatsink	S2600JF
FXXA90X90HS	Q2'12	1U Heat Sink	(2) 90 x 90 mm 1U passive Cu/Al heatsink	S2400LP
FXXA84X106HS	Q1'12	1U Heat Sink	(2) 84 x 106 mm 1U passive Cu/Al heatsink	S2600WP, S1600JP, S4600LH
FXRGTHS	Q1'09	Tower Heat Sink		SC5600LX
FEA90X902UHS	Q2'12	1U Heat Sink	(1) Heat Sink (Aluminum)	S2400SC2 - R2000M Chassis
BXSTS200PNRW	Q1'12	Passive Narrow Thermal Solution	(1) Narrow copper heatsink, for 24-DIMM board	S2600GZ
BXSTS100P		Passive Thermal Solution	with Ducted Airflow	SR1630BCR, SR2625URLXT, SR1600URR, SR1600URHSR, SR1625URR, SR1625URASR, SR1695WBAC, SR1695WBDC, SR1690WBR
AXXA90X902UHS	Q2'12	Passive Heat Sink		S2400SC, S1400FP - P4000 Chassis
ABPSRCACP	Q1'12	Spare Passive CPU Heatsink	Cu-Al, 91.5 x 91.5 mm, Passive Heat Sinks	S2600IP - R2000 Chassis
AUPSRCBTA	Q1'12	Heat Sink	(2) 98 x 100 mm Active Heat Sinks	S2600COE, S2600COEIOC - P4000M Chassis
AUPSRCBTP	Q1'12	Spare Passive CPU Heatsink (2-pack)	(2) 98 x 100 mm Passive Heat Sinks	S2600CP, S2600IP, S2600CO - P4000 Chassis

Intel® Server Chassis'

2U & 4U Server Chassis'

Model	Code Name	Launch	EOL Date / Last Order Date (LOD)	Power Supply	Redundant Power Supply (Efficiency)	Cooling	Limited 3-yr Warranty	HDD Support	Max CPU	Heatsink included	Backplanes included	Ordering Part #
2U RACK SERVER CHASSIS												
H2312XXKR	Bobcat Peak	Q3'12	Q4'15	1600 W	Platinum	no redundant fans	Yes	12 x 3.5" or 2.5" hot-swap drives	8	No	Yes	H2312XXKR
H2216XXKR	Bobcat Peak	Q3'12	Q4'15	1600 W	Platinum	no redundant fans	Yes	16 x 2.5" hot-swap drives			Yes	H2216XXKR
4U RACK OR PEDESTAL SERVER CHASSIS												
P4308XXMHGN	Union Peak	Q1'12	Q1'15	750 W	750 W	2 x 120 mm fixed fans	Yes	8 x 3.5" hot-swap drive carriers	2	No	Yes	P4308XXMHGN
P4308XXMHGC	Union Peak	Q1'12	Q1'15	750 W	750 W	2 x 120 mm fixed fans	Yes	8 x 3.5" hot-swap drive carriers	2	No	Yes	P4308XXMHGC
P4308XXMHEN	Union Peak	Q1'12	Q1'15	550 W	No	2 x 120 mm fixed fans	Yes	8 x 3.5" hot-swap drive carriers	2	No	Yes	P4308XXMHEN
P4308XXMHDR	Union Peak	Q1'12	Q1'15	460 W	460 W	2 x 120 mm fixed fans	Yes	8 x 3.5" hot-swap drive carriers	2	No	Yes	P4308XXMHDR
P4308XXMFEN	Union Peak	Q1'12	Q1'15	550 W	No	2 x 120 mm fixed fans	Yes	8 x 3.5" fixed drive carriers	2	No	No	P4308XXMFEN
P4304XXSHDR	Union Peak	Q1'12	Q1'15	460 W	460 W	2 x 92 mm fixed fans	Yes	4 x 3.5" hot-swap drive carriers	2	No	Yes	P4304XXSHDR
P4304XXSHCN	Union Peak	Q1'11		365 W	80+ Silver		Yes	4 x 3.5" fixed drive sleds	1	No	Yes	P4304XXSHCN
P4304XXSFEN	Union Peak	Q1'12	Q1'15	550 W	No	2 x 92 mm fixed fans	Yes	4 x 3.5" fixed drive sleds	2	No	No	P4304XXSFEN
P4304XXSFCN	Union Peak	Q1'11		365 W	80+ Silver		Yes	4 x 3.5" fixed drive sleds	1	No	Yes	P4304XXSFCN
P4216XXMHJC	Union Peak	Q1'12	Q1'15	1200 W	1200 W	Redundant cooling	Yes	16 x 2.5" hot-swap drive carriers	2	No	Yes	P4216XXMHJC
P4216XXMHGC	Union Peak	Q1'12	Q1'15	750 W	750 W	2 x 120 mm fixed fans	Yes	16 x 2.5" hot-swap drive carriers	2	No	Yes	P4216XXMHGC
P4208XXMHGC	Union Peak	Q1'12	Q1'15	750 W	750 W	Redundant cooling	Yes	8 x 2.5" hot-swap drive carriers	2	No	Yes	P4208XXMHGC

5U & 6U Server Chassis'

Model	Code Name	Launch	EOL Date	Power Supply	Redundant Power Supply (Efficiency)	Cooling	Limited 3-yr Warranty	HDD Support	Max CPU	Intrusion Switch assembly	Front panel cable	USB cable	Cable for 2 add'l SATA power connectors	COM2 cable	Ordering Part #
5U PEDESTAL (RACKABLE) SERVER CHASSIS															
SC5600LX	Riggins-T	Q1'09	1H'12 part still active	750 W	not incl	4 x redundant hotswap cooling fans with ducting	Yes	Supports up to 10 (6+4) fixed or hot-swap 3.5" SAS / SATA drives; 6 HDD carriers included	2			1	1	1	SC5600LX
SC5600BRP	Riggins-T	Q1'09	1H'12 part still active	750 W	not incl	3 x redundant fixed cooling fans with ducting	Yes	Supports up to 10 (6+4) fixed or hot-swap 3.5" SAS / SATA drives; 6 HDD carriers included	2	1	1	1	1	1	SC5600BRP
SC5600BASE	Riggins-T	Q1'09	1H'12 part still active	670 W	No	3 x redundant fixed cooling fans with ducting	Yes	6 x 3.5" fixed drive carriers	2	1	1	1	1		SC5600BASE
6U PEDESTAL (RACKABLE) SERVER CHASSIS															
MFSYS25V2	EOL 11/01/13	Q1'11	1H'14	1000 W	not incl	2 x power supply fans	Yes	14 x 2.5" hot-swap drive carriers	2						MFSYS25V2

Intel® Server Chassis' / Motherboard Compatibility Table

Model	2U Rack Server Chassis		4U Pedestal Server Chassis				4U Rack or Pedestal Server Chassis								5U Pedestal (Rackable) Server Chassis		
	H2312XXJR	H2216XXJR	P4304XXSHCN	P4304XXSFCN	P4304XXSHDR	P4304XXSFEN	P4308XXMHGN	P4308XXMHGC	P4308XXMHEN	P4308XXMHDR	P4308XXMFEN	P4216XXMHJC	P4216XXMHGC	P4208XXMHGC	SC5600LX	SC5600BRP	SC5600BASE
S12BTL			+														
S1200BTS				+													
S3420GPV																	
S3420GPLX																	
S3420GPLC																	
S5520HCT																	
S5520HC																+	+
S5500HCV																+	+
S5500BC																+	+
S2600CP2							+	+	+	+	+	+	+				
S2600CP4							+	+	+	+	+	+	+				
S2600C04							+	+	+	+	+	+	+				
S2600COE							+	+	+	+	+	+	+				
S2600CP2IOC							+	+	+	+	+	+	+				
S2600CP4IOC							+	+	+	+	+	+	+				
S2600COEIOC							+	+	+	+	+	+	+				
S2600CP2J					+	+	+	+	+	+	+	+	+				
S2400LP	+	+															
S2400LPQ	+	+															

Intel® Server Accessories & Spares

Part #	Product	Launch Date	Product Type	Includes	Compatible Products
CABLES					
FPWRCABLENA	North America Power Cable	Q2'06	Spare	(1) North America Power Cable	All Intel® Server Systems & Intel® Server Chassis
AXXCBL500MSMS	Cable Kit	Q1'12	Accessory	(1) Kit of 2 cables, 500 mm length, straight SFF-8087 to SFF-8087 connectors.	R2208GZ4GC, R2216GZ4GC, R2308GZ4GC, R2208GL4GS, R2308GL4GS, R2312GL4GS, R2312GZ4GCSAS, R2224IP4LHPC, R2216IP4LHPC, R2312IP4LHPC, P4224IP4LHCC, P4216IP4LHCC, P4216IP4LHJC, P4208IP4LHGC, P4308IP4LHCC, P4308IP4LHJC, P4308IP4LHGC, R2216GZ4GCLX, R2208IP4LHPC, R2308IP4LHPC, P4308IP4LHJCL, R2224GZ4GC4, R2312GZ4GC4, R2308GL4DS9, R2208GL4DS9, R2208GZ4GS9, R2308GZ4GS9, R2312GZ4GS9
AXXCBL1030MR7R	Cable Kit	Q1'12	Accessory	(1) Kit of 2 cables, 1030 mm length, right-angle SFF-8087 to right angle 7-pin SATA connectors.	R1304GZ4GC, R1304GL4DS9
AXXCBL165MSMS	Cable Kit	Q2'12	Accessory	(1) Kit of 2 cables 165 mm length, straight SFF-8087 to SFF-8087 connectors.	R2224IP4LHPC, R2216IP4LHPC, R2312IP4LHPC, P4224IP4LHCC, P4216IP4LHCC, P4216IP4LHJC, P4208IP4LHGC, P4308IP4LHCC, P4308IP4LHJC, P4308IP4LHGC, R2208IP4LHPC, R2308IP4LHPC, P4308IP4LHJCL
AXXCBL185MSMS	Cable Kit	Q2'12	Accessory	(1) Kit of 2 cables 185 mm length, straight SFF-8087 to SFF-8087 connectors.	P4208IP4LHGC, P4216IP4LHJC, P4216IP4LHCC, P4224IP4LHCC, P4308IP4LHGC, P4308IP4LHJC, P4308IP4LHJCL, P4308IP4LHCC, R2208IP4LHPC, R2216IP4LHPC, R2224IP4LHCC, R2308GL4DS9, R2308GL4GS, R2308GZ4GC, R2308GZ4GS9, R2308IP4LHPC, R2312GL4GS, R2312GZ4GC4, R2312GZ4GCSAS, R2312GZ4GS9, R2312IP4LHPC
AXXCBL245MSMS	Cable Kit	Q2'12	Accessory	(1) Kit of 2 cables 245 mm length, straight SFF-8087 to SFF-8087 connectors.	S2600IP4, S2600IP4L, R2224IP4LHPC, R2216IP4LHPC, R2312IP4LHPC, P4224IP4LHCC, P4216IP4LHCC, P4216IP4LHJC, P4208IP4LHGC, P4308IP4LHCC, P4308IP4LHJC, P4308IP4LHGC, R2208IP4LHPC, R2308IP4LHPC, P4308IP4LHJCL
AXXCBL550MRMR	Cable Kit	Q1'12	Accessory	(1) Kit of 2 cables, 550 mm length, right angle SFF-8087 to right angle SFF-8087 connectors.	R1208GZ4GC, R1208GL4DS, R1208GZ4GCSAS, R1208GZ4GS9
AXXCBL585MSMR	Cable Kit	Q1'12	Accessory	(1) Kit of 2 cables, 585 mm length, straight SFF-8087 to right angle SFF-8087 connectors.	R1208GZ4GC, R1208GL4DS, R1208GZ4GCSAS, R1208GZ4GS9
AXXCBL600MSMS	Cable Kit	Q1'12	Accessory	(1) Kit of 2 cables, 600 mm length, straight SFF-8087 to SFF-8087 connectors.	R2208GZ4GC, R2216GZ4GC, R2308GZ4GC, R2208GL4GS, R2308GL4GS, R2312GL4GS, R2312GZ4GCSAS, R2216GZ4GCLX, R2224GZ4GC4, R2312GZ4GC4, R2308GL4DS9, R2208GL4DS9, R2208GZ4GS9, R2308GZ4GS9, R2312GZ4GS9
AXXCBL650MSMS	Cable Kit	Q1'12	Accessory	(1) Kit of 2 cables, 650 mm length, straight SFF-8087 to SFF-8087 connectors.	Systems: R2208GZ4GC, R2216GZ4GC, R2308GZ4GC, R2208GL4GS, R2308GL4GS, R2312GL4GS, R2312GZ4GCSAS, R2224IP4LHPC, R2216IP4LHPC, R2312IP4LHPC, P4224IP4LHCC, P4216IP4LHCC, P4216IP4LHJC, P4208IP4LHGC, P4308IP4LHCC, P4308IP4LHJC, P4308IP4LHGC, R2216GZ4GCLX, R2208IP4LHPC, R2308IP4LHPC, P4308IP4LHJCL, R2224GZ4GC4, R2312GZ4GC4, R2308GL4DS9, R2208GL4DS9, R2208GZ4GS9, R2308GZ4GS9, R2312GZ4GS9. SSD Cache Controllers: RCS25ZB040, RCS25ZB040LX
AXXCBL730MRMR	Cable Kit	Q1'12	Accessory	(1) Kit of 2 cables, 730 mm length, right angle SFF-8087 to right angle SFF-8087 connectors.	R1208GZ4GC, R1208GL4DS, R1208GZ4GCSAS, R1208GZ4GS9
AXXCBL730MSMS	Cable Kit	Q1'12	Accessory	(1) Kit of 2 cables, 730 mm length, straight SFF-8087 to SFF-8087 connectors.	R1208GZ4GC, R1208GL4DS, R1208GZ4GCSAS, R1208GZ4GS9
AXXCBL770MSMR	Cable Kit	Q1'12	Accessory	(1) Kit of 2 cables, 770 mm length, straight SFF-8087 to right angle SFF-8087 connectors.	R1208GZ4GC, R1208GL4DS, R1208GZ4GCSAS, R1208GZ4GS9
AXXCBL850MS7R	Cable Kit	Q1'12	Accessory	(1) Kit of 2 cables, 850 mm length, straight SFF-8087 to right angle 7-pin SATA connectors.	R1304GZ4GC, R1304GL4DS9
AXXRJ45DB92	RJ45 To DB9 Cable Kit	Q1'09	Accessory	(2) serial cable converter dongles (RJ45 to DB9) - one for DSD, one for DCD (modem), one serial ribbon cable for cabling 2nd serial port	SR1550, SR2500, SC5299BRP, SC5650DP, SC5600BASE, SC5650UP, SR1500, SC5650BRP, SC5299DP, SC5600BRP, SC5600LX, SR2500ALBRPR, SR1500ALR, SR1550ALSASR, SR2500ALLXR, SC5650BCDPR, SC5650HCBRPR, SR2625URLXR, SR2625URLXT, SR2625URBRPR, SR1600URR, SR1600URSR, SR1625URR, SR1625URASR, SR2600URBRPR, SR2600URLXR, SR2600URSAR, SR1630GPRX, SR1630HGPRX, SR1690WBR
AXXSR16XXRAIDCA	Mini-SAS cable	Q3'10	Accessory	(1) Mini-SAS cable for Intel RAID add-in cards	SR1695WBAC, SR1695GPRX1AC, SR1695GPRX2AC, SR1695WBDC, SR1690WBR
ASR2612SASCBL	Mini SAS Cable Accessory Kit	Q1'09	Accessory	(1) Mini-SAS Cable Accessory Kit	SR2612URR
AXXIOMKIT	IO Module Cable Kit	Q1'13	Accessory	Flex cable, brackets and screws.	S2600IP, S4600LH
FXXSCVDCBL	Internal Video Cable to External VGA Port Kit	Q1'09	Accessory	(1) Internal video cable to external VGA port	SC5650SCWS
AXXCBL880SATA	880 mm SATA ODD cable		Accessory	(1) 880 mm SATA cable for OOD. Orderable in packs of 10.	R1304GZ4GC, R1208GZ4GC, R1208GL4DS, R1208GZ4GCSAS, R2208GZ4GC, R2216GZ4GC, R2308GZ4GC, R2208GL4GS, R2308GL4GS, R1304BB4DC, R1208BB4DC, R2208BB4GC, R2216BB4GC, R2308BB4GC, R2216GZ4GCLX, R2208BB4GS9, R1304BB4GS9, R1208BB4GS9, R2000BB4GS9, R1304GL4DS9, R2308GL4DS9, R2208GL4DS9, R1208GZ4GS9, R1304GZ4GS9, R2208GZ4GS9, R2308GZ4GS9
POWER SUPPLIES					
FXXRIGT670WPSU	670 W Power Supply	Q1'09	Spare	(1) 670 W Power Supply	SC5600BASE
FXXPPT600WPSU	600 W Power Supply	Q1'09	Spare	(1) 600 W Power Supply	SC5650DP, SC5650BCDPR
FXX750PCRPS	750 W Common Redundant Power Supply	Q1'12	Spare	(1) 750 W Cold Redundant Power Supply spare (80 Plus Platinum efficiency)	P4000, R1000, and R2000 server chassis
FXX750GERPS	Spare 750 W Hot-Swap Power Supply	Q1'12	Spare	(1) Spare 750 W redundant power supply FXX750GERPS (1U Form Factor, Gold-Efficiency)	Systems: R2224IP4LHPC, RSS16IP4LHPC, R2312IP4HPC, R2208IP4LHPC, R2308IP4LHPC. Boards: S2600IP in R2000 chassis
FXX460GCRPS	460 W Common Redundant Power Supply	Q1'12	Spare	(1) Spare 460 W Common Redundant Power Supply (Gold-Efficiency, 80+)	P4208CP4MHGC, P4304SC2SHDR, P4308CP4MHEN, P4308CP4MHGC, R1208xxx series, R1304xxx series, R2000BB4GS9, R2208xxx series, R2216xxx series, R2224BB4GCSAS, R2224GZ4GCSAS, R2308xxx series, R2312xxx series. Chassis: P4208xxx series, P4216xxx series, P4304xxx series, P4308xxx series.

Intel® Server Accessories

Intel® Server Accessories & Spares (Cont.)

Part #	Product	Launch Date	Product Type	Includes	Compatible Products
POWER SUPPLIES					
FXX400PSU	400 W High Efficiency Power Supply	Q1'06	Spare	(1) 400 W High-Efficiency Power Supply	SC5650UP
FXX1600PCRPS	1600 W Common Redundant Power Supply	Q1'12	Spare	(1) 750 W Cold Redundant Power Supply spare (80+ Platinum efficiency)	P4000, R1000, and R2000 server chassis
FXX1200PCRPS	1200 W Common Redundant Power Supply		Spare	(1) Spare 1200 W Common Redundant Power Supply (Platinum-Efficiency)	Systems: H2216xxx series, H2312xxx series Chassis: P4208xxx series, P4216xxx series, P4224IP4LHKC, P4304XXMHEN, P4308xxx series
FUP550SNRPS	550 W Power Supply	Q1'12	Spare	(1) Spare 550 W Non-Redundant Power Supply (Silver-Efficiency)	P4000 Chassis Family
FUP365SNRPS	365 W Power Supply	Q2'11	Spare	(1) 365 W non-redundant Power Supply Spare (80 Plus Silver)	P4000S Ped Chassis
FTH450WPS	450 W AC Power Supply	Q3'10	Spare	(1) 450 W AC Power Supply	SR1640TH, SR1695WBAC
FSR2612PS	760 W Hot-Swap Power Supply Module	Q1'09	Spare	(1) 760 W Hot-Swap Power Supply	SR2612URR
FSR1695GPRXPS	400 W Power Supply	Q3'10	Spare	(1) 400 W AC redundant PSU	SR1695GPRX1AC, SR1695PRX2AC
FSR1690PS	650 W Power Supply	Q1'09	Spare	(1) 650 W Power Supply	SR1690WBR
FSR1600PS	600 W Power Supply Module	Q1'09	Spare	(1) 600 W Power Supply	SR1600URR
FR1000PS350	350 W Power Supply	Q2'11	Spare	(1) 350 W Power Supply Spare	SR1630GPRX, R1304BTLSHBN, SR1630HGPRX, R1304BTLSHBNR
FR1000PS250	250 W Power Supply	Q2'11	Spare	(1) 250 W Power Supply Spare	R1304BTLSFAN, R1304BTSSFAN, R1304BTLSFANR, R1304BTSSFANR
FHJT400WPS	400 W High Efficiency Power Supply	Q1'09	Spare	(1) 400 W High-Efficiency Power Supply	SR1630BCR
FHJ350WPS	350 W Power Supply	Q3'09	Spare	(1) 350 W Power Supply	SR1530HSH, SR1530SH, SR1630GP, SR1630HGP
F1U450WPSU	System Power Supply	Q4'12	Spare	(1) 450 W AC miniERP 80 Gold efficiency power supply	R1304JP40C, R1208JP40C, R1208JP4TC
PEDESTAL TO RACK CONVERSION KITS					
APP3RACKIT	Pedestal to Rack Conversion Kits	Q1'06	Spare	Rack rails and hardware for rack installation	SC5299BRP, SC5650DP, SC5299UP, SC5650UP, SC5650BRP, SC5299DP, SC5650BCDPR, SC5650HCBRPR
ARIGRACK	Pedestal to Rack Conversion Kits	Q2'06	Spare	Hinge cover; rack handles, intrusion switch jumper, new rail kit assembly, rack hardware kit, icon label, installation guide	SC5400BASE, SC5600BASE, SC5400BRP, SC5400LX, SC5400LXI, SC5600BRP, SC5600LX

Intel® RAID Controllers, Integrated RAID (Modules/System Boards) & RAID Expanders

Model #	Code Name	Release	EOL Date	Board Form Factor	Data Transfer Rate	Supported Devices	Compatible Battery Backup	RAID Level Supported	# of Internal Ports	# of External Ports	# of Supported Devices	Embedded Memory	PCIe Host Interface	Part #
RAID CONTROLLERS														
RCS25ZB040LX		Q1'13	1H'16	Low-Profile MD2	6 Gb/s	SAS / SATA	AXXRMFBU3	0,1,5,6,10,50,60	4	0	128	1 GB + 1 TB	PCIe 3.0 x8	RCS25ZB040LX
RCS25ZB040		Q1'13	1H'16	Low-Profile MD2	6 Gb/s	SAS / SATA	AXXRMFBU3	0,1,5,6,10,50,60	4	0	128	1 GB + 256 GB	PCIe 3.0 x8	RCS25ZB040
RT3WB080		Q4'10	1H'15	Low-Profile MD2	6 Gb/s	SATA	AXXRSBBU7 / 8	0,1,5,6,10,50,60	8	0	32	256 MB	PCIe 2.0 x8	RT3WB080
RS3WC080	Waimea	Q3'13	1H'17	Low-Profile MD2	12 Gb/s	SAS / SATA		0,1,5,10,50	8	0	128		PCIe 3.0 x8	RS3WC080
RS3UC080	Umbrella Canyon	Q3'13	1H'17	Low-Profile MD2	12 Gb/s	SAS / SATA		0,1,1E,10,JBOD	8	0	244		PCIe 3.0 x8	RS3UC080
RS3GC008	Guadalupe Canyon	Q3'13	1H'17	Low-Profile MD2	12 Gb/s	SAS / SATA		0,1,1E,10,JBOD	0	8	244		PCIe 3.0 x8	RS3GC008
RS3FC044	Fall Canyon	Q3'13	1H'17	Low-Profile MD2	12 Gb/s	SAS / SATA		0,1,1E,10,JBOD	4	4	244		PCIe 3.0 x8	RS3FC044
RS3DC080	Dark Canyon	Q3'13	1H'17	Low-Profile MD2	12 Gb/s	SAS / SATA		0,1,5,6,10,50,60	8		128	1 GB	PCIe 3.0 x8	RS3DC080
RS3DC040	Dark Canyon	Q3'13	1H'17	Low-Profile MD2	12 Gb/s	SAS / SATA		0,1,5,6,10,50,60	4		128	1 GB DDR3	PCIe 3.0 x8	RS3DC040
RS2WG160	Walnut Grove	Q4'10	1H'14	Full-Height	6 Gb/s	SAS / SATA	AXXRSBBU7 / 8	0,1,5,6,10,50,60	16	0	240	512 MB	PCIe 2.0 x8	RS2WG160
RS2WC080	Whale Cove	Q4'10	2H'14	Low-Profile MD2	6 Gb/s	SAS / SATA	None	0,1,5,10,50	8	0	16	none	PCIe 2.0 x8	RS2WC080
RS2WC040	Whale Cove	Q4'10	2H'14	Low-Profile MD2	6 Gb/s	SAS / SATA	None	0,1,5,10,50	4	0	16	none	PCIe 2.0 x8	RS2WC040
RS2VB080		Q1'12	1H'15	Low-Profile MD2	6 Gb/s	SAS / SATA	MFBU Included	0,1,5,6,10,50,60	8		128	512 MB	PCIe 2.0 x8	RS2VB080
RS2VB040		Q1'12	1H'15	Low-Profile MD2	6 Gb/s	SAS / SATA	MFBU Included	0,1,5,6,10,50,60	4		128	512 MB	PCIe 2.0 x8	RS2VB040
RS2SG244	Sierra Grande	Q4'10	1H'14	Full-Height	6 Gb/s	SAS / SATA	AXXRSBBU7 / 8	0,1,5,6,10,50,60	24	4	240	512 MB	PCIe 2.0 x8	RS2SG244
RS2PI008	Puget Island	Q4'10	Q4'12	Low-Profile MD2	6 Gb/s	SAS / SATA	AXXRSBBU7 / 8	0,1,5,6,10,50,60	0	8	240	512 MB	PCIe 2.0 x8	RS2PI008
RS2MB044	Mobile Bay	Q4'10	Q4'14	Low-Profile MD2	6 Gb/s	SAS / SATA	AXXRSBBU7 / 8	0,1,5,6,10,50,60	4	4	240	512 MB	PCIe 2.0 x8	RS2MB044
RS2BL080	Big Laurel	Q2'11	Q2'15	Low-Profile MD2	6 Gb/s	SAS / SATA	AXXRSBBU7 / 8	0,1,5,6,10,50,60	8	0	32	512 MB	PCIe 2.0 x8	RS2BL080
RS2BL040	Big Laurel	Q1'11	Q1'16	Low-Profile MD2	6 Gb/s	SAS / SATA	AXXRSBBU7 / 8	0,1,5,6,10,50,60	4	0	16	512 MB	PCIe 2.0 x8	RS2BL040
RS25SB008	Sonoma Beach	Q1'12	1H'16	Low-Profile MD2	6 Gb/s	SAS / SATA	MFBU Included	0,1,5,6,10,50,60	0	8	240	1 GB	PCIe 3.0 x8	RS25SB008
RS25NB008		Q3'11	Q1'16	Low-Profile MD2	6 Gb/s	SAS / SATA	AXXRSBBU9	0,1,5,6,10,50,60	0	8	128	1 GB	PCIe 2.0 x8	RS25NB008
RS25GB008		Q3'11	Q1'16	Low-Profile MD2	6 Gb/s	SAS / SATA	AXXRSBBU9	0,1,5,6,10,50,60	0	8	128	1 GB	PCIe 2.0 x8	RS25GB008
RS25FB044	Flagler Beach	Q4'12	1H'16	Low-Profile MD2	6 Gb/s	SAS / SATA	None	0,1,1E,10,JBOD	4	4	256	none	PCIe 3.0 x8	RS25FB044
RS25DB080		Q1'11	Q1'16	Low-Profile MD2	6 Gb/s	SAS / SATA	AXXRSBBU9	0,1,5,6,10,50,60	8	0	128	1 GB	PCIe 2.0 x8	RS25DB080
RS25AB080		Q1'12	1H'16	Low-Profile MD2	6 Gb/s	SAS / SATA	MFBU Included	0,1,5,6,10,50,60	8	0	128	1 GB	PCIe 2.0 x8	RS25AB080
INTEL® INTEGRATED SERVER RAID MODULE														
AXXSAS10MOD		Q3'10		Module	3 Gb/s	SAS / SATA							Integrated I/O Exp	AXXSAS10MOD
AXXRMS2MH080		Q1'10	1H'14	1U Capable Module	6 Gb/s	SAS / SATA	AXXRSBBU7 / 8	0,1,5,6,10,50,60	8		32	512 MB	Integrated I/O Exp	AXXRMS2MH080
AXXRMS2LL080		Q1'10	1H'14	1U Capable Module	6 Gb/s	SAS / SATA		0,1,1E	8		32		Integrated I/O Exp	AXXRMS2LL080
AXXRMS2LL040		Q4'10	1H'14	1U Capable Module	6 Gb/s	SAS / SATA		0,1,1E	4		32		Integrated I/O Exp	AXXRMS2LL040
AXXRMS2AF080		Q4'10	1H'14	1U Capable Module	6 Gb/s	SAS / SATA		0,1,5,10,50	8		32		Integrated I/O Exp	AXXRMS2AF080
AXXRMS2AF040		Q4'10	1H'14	1U Capable Module	6 Gb/s	SAS / SATA		0,1,5,10,50	4		32		Integrated I/O Exp	AXXRMS2AF040
AXX4SASMOD		Q4'10	Q4'12	1U Capable Module	6 Gb/s	SAS / SATA		0,1,1E,10			120		PCIe 1.0 x4	AXX4SASMOD
RMT3PB080	Pompano Beach	Q1'12	2H'14	PCIe Module	6 Gb/s	SATA only	BBU9 / MFBU2	0,1,5,6,10,50,60	8		16	512 MB	PCIe 2.0 x8	RMT3PB080
RMT3CB080	Condado Beach	Q1'12	2H'14	SIO Module	6 Gb/s	SATA only	BBU9 / MFBU2	0,1,5,6,10,50,60	8		18	512 MB	PCIe 2.0 x8	RMT3CB080
RMS25PB080	Pompano Beach	Q1'12	2H'14	PCIe Module	6 Gb/s	SAS / SATA	BBU9 / MFBU2	0,1,5,6,10,50,60	8		128	1 GB	PCIe 2.0 x8	RMS25PB080
RMS25PB040	Pompano Beach	Q1'12	2H'14	PCIe Module	6 Gb/s	SAS / SATA	BBU9 / MFBU2	0,1,5,6,10,50,60	4		128	1 GB	PCIe 2.0 x8	RMS25PB040
RMS25KB080	Kohala Beach	Q1'12	2H'14	SIO Module	6 Gb/s	SAS / SATA	None	0,1,1E,10	8		128	n/a	PCIe 2.0 x8	RMS25KB080
RMS25KB040	Kohala Beach	Q1'12	2H'14	SIO Module	6 Gb/s	SAS / SATA	None	0,1,1E,10	4		128	n/a	PCIe 2.0 x8	RMS25KB040
RMS25JB080	Jackson Beach	Q1'12	2H'14	PCIe Module	6 Gb/s	SAS / SATA	None	0,1,1E,10	8		128	n/a	PCIe 2.0 x8	RMS25JB080
RMS25JB040	Jackson Beach	Q1'12	2H'14	PCIe Module	6 Gb/s	SAS / SATA	None	0,1,1E,10	4		128	n/a	PCIe 2.0 x8	RMS25JB040
RMS25CB080	Condado Beach	Q1'12	2H'14	SIO Module	6 Gb/s	SAS / SATA	BBU9 / MFBU2	0,1,5,6,10,50,60	8		128	1 GB	PCIe 2.0 x8	RMS25CB080
RMS25CB040	Condado Beach	Q1'12	2H'14	SIO Module	6 Gb/s	SAS / SATA	BBU9 / MFBU2	0,1,5,6,10,50,60	4		128	1 GB	PCIe 2.0 x8	RMS25CB040
INTEL® RAID EXPANDERS														
RES2CV360	Scotch Valley	Q1'12	1H'17	Low-Profile MD2	6 Gb/s	SAS / SATA	LSI 6 Gb SAS2x36 expander	Dependent on paired RAID card	36	0				RES2CV360
RES2SV240	Scotch Valley	Q1'10	1H'17	Low-Profile MD2	6 Gb/s	SAS / SATA	LSI 6 Gb SAS2x24 expander	Dependent on paired RAID card	24	0			n/a	RES2SV240
RES2CV240	Scotch Valley	Q1'12	1H'17	Narrow System Bd	6 Gb/s	SAS / SATA	LSI 6 Gb SAS2x24 expander	Dependent on paired RAID card	24	0				RES2CV240
RES2SV240NC	Scotch Valley	Q4'11		Expander Card	6 Gb/s	SAS / SATA								RES2SV240NC

Intel® RAID Premium Features, Accessories & Backup

Product	Launch Date	EOL Date	Product Type	Part #	Description
INTEL® RAID PREMIUM FEATURES					
Intel® RAID Premium Feature Key AXXRPFKHA2	Q3'13	1H'16	Activation Key	AXXRPFKHA2	Intel RAID Activation Key HA2 allows two Intel RAID controllers to provide failover for a two servers in a cluster or shared storage environment.
Intel® RAID Drive Encryption Management	Q4'12	Q1'14	Activation Key	AXXRPFKDE AXXRPFKDE2	Upgrade Key to enable Drive Encryption Management for Intel RAID 6G ROC Products.
Intel® RAID Rapid Recovery Snapshot		Q4'12	Activation Key	AXXRPFKSNSH AXXRPFKSNSH2	Upgrade Key to enable Rapid Recovery Snapshot for Intel RAID 6G ROC Products.
Intel® RAID SSD Cache with Fast Path *I/O	Q4'12	Q1'16	Activation Key	AXXRPFKSSD AXXRPFKSSD2	Upgrade Key to enable SSD Cache with Fastpath I/O for Intel RAID 6G ROC Products.
INTEL® RAID ACCESSORIES					
Intel® RAID Converter Board RCVT8788	Q3'12	1H'16	MD2 PCIe Slot	AXXRCVT8788	The Intel® RAID Converter Board RCVT8788 allows for internal SAS or SATA ports to be extended outside the system. It includes 2 internal 8087 Mini-SAS connectors that are connected to two external 8088 Mini-SAS connectors.
Intel® RAID/SAS Cable Kit CBL740MS7P	Q3'11	Q4'13	RAID/SAS Cable Kit	AXXCBL740MS7P	Intel RAID/SAS Cable Kit CBL740MS7P provides two 740 mm cables with a four port Mini-SAS 8087 connector on one end and four 7-pin SATA style pins on the other end.
Intel® RAID Activation Key AXXRAKSAS2		Q4'12	Activation Key	AXXRAKSAS2	RAID Activation key enables full intelligent SAS HW RAID for the Intel Servers with a LSI1078-based active midplane.
Intel® RAID Activation Key AXXRAKSW5		Q4'13	Activation Key	AXXRAKSW5	RAID Activation Key enables SAS and/or SATA Software RAID 5 on most Intel Server Boards.
512 MB Mini DIMM Registered DDR2 for RAID Cache AXXMINIDIMM512	Q1'10	Q4'14	Memory	AXXMINIDIMM512	512 MB Mini DIMM registered DDR-2 for use with FALSASMP2
INTEL® RAID SMART BATTERIES					
AXXRSBBU9	Q2'11	1H'18	Battery	AXXRSBBU9	Intel® RAID Smart Battery AXXRSBBU9 provides optional battery backup for mainstream RS25 family RAID products.
AXXRSBBU8	Q1'11	Q1'17	Battery	AXXRSBBU8	Intel® RAID Smart Battery AXXRSBBU8 provides optional battery backup for mainstream RS2 family RAID products such as Intel RAID Controllers RS2BL080/040. It is also compatible with AXXROMBSASMR.
AXXRSBBU7	Q1'10	1H'17	Battery	AXXRSBBU7	Optional RAID Smart battery back up for use with Intel 6G SAS RAID controllers. Includes components for remote mounting.
AXXRSBBU6	Q1'10	1H'15	Battery	AXXRSBBU6	Optional RAID Smart battery back up provides 48 hours of cache data retention for use with Intel® RAID Controllers SRCASBB8I and SRCASLS4I. RoHS Complaint.
AXXRSBBU4	Q1'10	Q2'14	Battery	AXXRSBBU4	Optional RAID Smart battery back up Provides up to 48 hours of cache data retention for use with Intel® RAID Controllers SRCASARB and SRCASATWB. RoHS Complaint.
AXXRSBBU3	Q1'10	Q2'14	Battery	AXXRSBBU3	Optional RAID Smart battery back up for use with Intel RAID Controllers AXXRAK18E, SRCAS144E, SRCASJV. Active MidPlanes, and ROMBSASMR.
Maintenance Free Backup AXXRMFBU3	Q2'13	2H'17	SuperCap Package	AXXRSBBU3	Supercapacitor-based Maintenance Free Backup Unit helps protect cache in the event of a power failure or system crash. This module is designed for Intel RAID SSD Cache Controller RCS2ZB040. It does not support any other products.
Maintenance Free Backup AXXRMFBU2	Q1'12	1H'17	SuperCap Package	AXXRMFBU2	Maintenance Free Backup Unit for Intel Integrated RAID RMS25 & RMT3 families. Includes 1 maintenance free backup unit (supercapacitor module, NAND flash module, cables & bracket).

Intel® Embedded Processors

Intel® Desktop Processors (Embedded)

Processor #	Code Name	Release	Cores / Threads	Clock Speed	Cache	Bus Speed	Lithography	Max TDP	Integrated Graphics	Socket	OEM Tray Part #	Retail Boxed Part #
INTEL® CELERON® DESKTOP PROCESSOR												
P1053	Jasper Forest	Q1'10	1 / 2	1.33 GHz	2 MB	2.5 GT/s DMI	45 nm	30 W	No	FCLGA1366	AT80612004743AA	
G540	Sandy Bridge	Q3'11	2 / 2	2.50 GHz	2 MB	5 GT/s DMI	32 nm	65 W	Yes	FCLGA1155	CM806230104680A	BXC80623G540
G1620	Ivy Bridge	Q1'13	2 / 2	2.70 GHz	2 MB	5 GT/s DMI	22 nm	55 W	Yes	FCLGA1155	CM8063701445001	BX80637G1620
G1101	Clarkdale	Q1'10	2 / 2	2.26 GHz	2 MB	2.5 GT/s DMI	32 nm	73 W	Yes	FCLGA1155	CM80616004596AC	
E1500	Conroe	Q3'06	2 / 2	2.20 GHz	512 KB	800 MHz FSB	65 nm	65 W	No	LGA775	HH80557PG049D	
440	Conroe	Q3'06	1 / 1	2.00 GHz	512 KB	800 MHz FSB	65 nm	35 W	No	LGA775	HH80557RG041512	BX80557440
INTEL® PENTIUM® DESKTOP PROCESSOR												
G850	Sandy Bridge	Q2'11	2 / 2	2.90 GHz	3 MB	5 GT/s DMI	32 nm	65 W	Yes	FCLGA1155	CM806230104620A	BX80623G850
G6950	Clarkdale	Q1'10	2 / 2	2.80 GHz	3 MB	2.5 GT/s DMI	32 nm	73 W	Yes	FCLGA1155	CM80616004593AE	
G3420	Haswell	Q3'13	2 / 2	3.20 GHz	3 MB	5 GT/s DMI	22 nm	54 W	Yes	FCLGA1150	CM8064601482522	BX80646G3420
G2120	Ivy Bridge	Q1'13	2 / 2	3.10 GHz	3 MB	5 GT/s DMI	22 nm	55 W	Yes	FCLGA1155	CM8063701095801	BX80637G2120
E6500	Wolfdale	Q1'08	2 / 2	2.93 GHz	2 MB	1066 MHz FSB	45 nm	65 W	No	LGA775	AT80571PH0772ML	
E5300	Wolfdale	Q1'08	2 / 2	2.60 GHz	2 MB	800 MHz FSB	45 nm	65 W	No	LGA775	AT80571PG0642M	
E2160	Conroe	Q3'06	2 / 2	1.80 GHz	1 MB	800 MHz FSB	65 nm	65 W	No	LGA775	HH80557PG0331M	
INTEL® CORE™2 DUO DESKTOP PROCESSOR												
E8400	Wolfdale	Q1'08	2 / 2	3.00 GHz	6 MB	1333 MHz FSB	45 nm	65 W		LGA775	AT80570PJ0806M	
E7400	Wolfdale	Q1'08	2 / 2	2.80 GHz	3 MB	1066 MHz FSB	45 nm	65 W		LGA775	AT80571PH0723M	
E6400	Conroe	Q3'06	2 / 2	2.13 GHz	2 MB	1066 MHz FSB	65 nm	65 W		LGA775	HH80557PH0462M	
E4300	Conroe	Q3'06	2 / 2	1.80 GHz	2 MB	800 MHz FSB	65 nm	65 W		LGA775	HH80557PG0332M	
INTEL® CORE™2 QUAD DESKTOP PROCESSOR												
Q9400	Yorkfield	Q3'08	4 / 4	2.66 GHz	6 MB	1333 MHz FSB	45 nm	95 W		LGA775	AT80580PJ0676M	
INTEL® CORE™ i3 PROCESSOR												
i3-3220	Ivy Bridge	Q3'12	2 / 4	3.30 GHz	3 MB	5 GT/s DMI	22 nm	55 W	Yes	FCLGA1155	CM8063701099500	BX80637I33220T
i3-2120	Sandy Bridge	Q1'11	2 / 4	3.30 GHz	3 MB	5 GT/s DMI	32 nm	65 W	Yes	FCLGA1155	CM806230104420A	BX80623I32120
i3-2115C	Gladden	Q2'12	2 / 4	2.00 GHz	3 MB	5 GT/s DMI		25 W	Yes	FCBGA1284	AV8062701064700	
i3-330E	Arrandale	Q1'10	2 / 4	2.13 GHz	3 MB	2.5 GT/s DMI	32 nm	35 W	Yes	BGA1288	CN80617004467AC	
INTEL® CORE™ i5 PROCESSORS												
i5-4570TE	Haswell	Q2'13	2 / 4	2.70 GHz	4 MB	5 GT/s DMI	22 nm	35 W	Yes	FCLGA1150	CM8064601484301	
i5-4570S	Haswell	Q2'13	4 / 4	2.90 GHz	6 MB		22 nm	65 W	Yes	FCLGA1150	CM8064601465605	BX80646I54570S
i5-3550S	Ivy Bridge	Q2'12	4 / 4	3.00 GHz	6 MB	5 GT/s DMI	22 nm	65 W	Yes	FCLGA1155	CM8063701095203	
i5-2400	Sandy Bridge	Q1'11	4 / 4	3.10 GHz	6 MB	5 GT/s DMI	32 nm	95 W	Yes	LGA1155	CM8062300834106	BX80623I52400
i5-750	Lynnfield	Q3'09	4 / 4	2.66 GHz	8 MB	2.5 GT/s DMI	45 nm	95 W	No	LGA1156	BV80605001911AP	
INTEL® CORE™ i7 PROCESSORS												
i7-4770TE	Haswell	Q2'13	4 / 8	3.30 GHz	8 MB	5 GT/s DMI	22 nm	45 W	Yes	FCLGA1150	CM8064601538900	
i7-4770S	Haswell	Q2'13	4 / 8	3.10 GHz	8 MB		22 nm	65 W	Yes	FCLGA1150	CM8064601465504	BX80646I74770S
i7-3770	Ivy Bridge	Q2'12	4 / 8	3.40 GHz	8 MB	5 GT/s DMI	22 nm	77 W	Yes	FCLGA1155	CM8063701211600	BX80637I73770
i7-2600	Sandy Bridge	Q1'11	4 / 8	3.40 GHz	8 MB	5 GT/s DMI	32 nm	95 W	Yes	LGA1155	CM8062300834302	BX80623I72600
i7-860	Lynnfield	Q3'09	4 / 8	2.80 GHz	8 MB	2.5 GT/s DMI	45 nm	95 W	No	LGA1156	BV80605001908AK	BX80605I7860
INTEL® ATOM™ PROCESSOR												
D525	Pineview	Q2'10	2 / 4	1.80 GHz	1 MB	2.5 GT/s DMI	45 nm	13 W	Yes	FCBGA559	AU80610006225AA	
D510	Pineview	Q1'10	2 / 4	1.66 GHz	1 MB	2.5 GT/s DMI	45 nm	13 W	Yes	FCBGA559	AU80610004392AA	
D425	Pineview	Q2'10	1 / 2	1.80 GHz	512 KB	2.5 GT/s DMI	45 nm	10 W	Yes	FCBGA559	AU80610006252AA	
D410	Pineview	Q1'10	1 / 2	1.66 GHz	512 KB	2.5 GT/s DMI	45 nm	10 W	Yes	FCBGA559	AU80610004671AA	
D2550	Cedarview	Q1'12	1 / 2	1.86 GHz	1 MB		32 nm	10 W	Yes	FCBGA559	DF8064101211300	

Intel® Embedded Processors

Intel® Mobile Processors (Embedded)

Processor #	Code Name	Release	Cores / Threads	Clock Speed	Cache	Bus Speed	Lithography	Max TDP	Integrated Graphics	Socket	uFCBGA Tray Part #	uFCPGA Tray Part #
INTEL® CELERON® MOBILE PROCESSOR												
2980U	Haswell	Q3'13	2 / 2	1.60 GHz	2 MB		22 nm	15 W	Yes		CL8064701479801	
1047UE	Ivy Bridge	Q1'13	2 / 2	1.40 GHz	2 MB	5 GT/s DMI	22 nm	17 W	Yes	BGA1023	AV8063801116300	
1020E	Ivy Bridge	Q1'13	2 / 2	2.20 GHz	2 MB	5 GT/s DMI	22 nm	17 W	Yes	BGA1023 / PGA988	AV8063801276200	AW8063801117700
ULV 573	Merom	Q3'06	1 / 1	1.00 GHz	512 KB	533 MHz FSB	65 nm	10 W	No	PBGA479	LE80537VE001512	
U3405	Arrandale	Q1'10	2 / 2	1.06 GHz	2 MB	2.5 GT/s DMI	32 nm	18 W	Yes	BGA1288	CN80617006201AA	
T3100	Penryn	Q3'08	2 / 2	1.90 GHz	1 MB	800 MHz FSB	45 nm	35 W	No	BGA479 / PGA478	AV80577NG0371M	AW80577GG0371ML
P4505	Arrandale	Q1'10	2 / 2	1.86 GHz	2 MB	2.5 GT/s DMI	32 nm	35 W	Yes	BGA1288	CN80617004545AF	
P4500	Arrandale	Q1'10	2 / 2	1.86 GHz	2 MB	2.5 GT/s DMI	32 nm	35 W	Yes	PGA988		CP80617004803AA
B810E	Sandy Bridge	Q2'11	2 / 2	1.60 GHz	2 MB	5 GT/s DMI	32 nm	35 W	Yes	FCBGA1023	AV8062700849802	
B810	Sandy Bridge	Q1'11	2 / 2	1.60 GHz	2 MB	5 GT/s DMI	32 nm	35 W	Yes	PGA988		FF8062700848800
927UE	Ivy Bridge	Q1'13	1 / 1	1.50 GHz	1 MB	5 GT/s DMI	22 nm	17 W	Yes	FCBGA1023	AV8063801129600	
847E	Sandy Bridge	Q2'11	2 / 2	1.10 GHz	2 MB	5 GT/s DMI	32 nm	17 W	Yes	FCBGA1023	AV8062700849902	
827E	Sandy Bridge	Q3'11	1 / 1	1.40 GHz	1.5 MB	5 GT/s DMI	32 nm	17 W	Yes	FCBGA1023	AV8062701082300	
807UE	Sandy Bridge	Q4'11	1 / 1	1.00 GHz	1 MB	5 GT/s DMI	32 nm	10 W	Yes	FCBGA1023	AV8062701188200	
725C	Gladden	Q2'12	1 / 2	1.30 GHz	1.5 MB			10 W		FCBGA1284	AV8062701147000	
575	Merom	Q3'06	1 / 1	2.00 GHz	512 KB	667 MHz FSB	65 nm	31 W	No	PPGA478		LF80537NF0411M
550	Merom	Q3'06	1 / 1	2.00 GHz	1 MB	533 MHz FSB	65 nm	31 W	No	PBGA479 / PPGA478		LF80537NE0411M
INTEL® CORE™ DUO MOBILE PROCESSOR												
U2500	Yonah	Q1'06	2 / 2	1.20 GHz	2 MB	533 MHz FSB	65 nm	9 W		PBGA479		LE80539UE0092M
T2500	Yonah	Q1'06	2 / 2	2.00 GHz	2 MB	667 MHz FSB	65 nm	31 W		PBGA479 / PPGA478		LE80539GF0412M
L2400	Yonah	Q1'06	2 / 2	1.66 GHz	2 MB	667 MHz FSB	65 nm	15 W		PBGA479		LE80539LF0282M
INTEL® CORE™2 DUO MOBILE PROCESSOR												
U7500	Merom	Q3'06	2 / 2	1.06 GHz	2 MB	533 MHz FSB	65 nm	10 W		PBGA479	LE80537UE0042M	
T9400	Penryn	Q3'08	2 / 2	2.53 GHz	6 MB	1066 MHz FSB	45 nm	35 W		BGA479 / PGA478	AV80576GH0616M	AW80576GH0616M
T7500	Merom	Q3'06	2 / 2	2.20 GHz	4 MB	800 MHz FSB	65 nm	35 W		PBGA479 / PPGA478	LE80537GG0494M	LF80537GG0494M
T7400	Merom	Q3'06	2 / 2	2.16 GHz	4 MB	667 MHz FSB	65 nm	34 W		PBGA479 / PPGA478	LE80537GF0484M	LF80537GF0484M
SU9300	Penryn	Q3'08	2 / 2	1.20 GHz	3 MB	800 MHz FSB	45 nm	10 W		BGA956	AV80577UG0093M	
SP9300	Penryn	Q3'08	2 / 2	2.26 GHz	6 MB	1066 MHz FSB	45 nm	25 W		BGA956	AV80576SH0516M	
SL9400	Penryn	Q3'08	2 / 2	1.86 GHz	6 MB	1066 MHz FSB	45 nm	17 W		BGA956	AV80576LH0366M	
SL9380	Penryn	Q3'08	2 / 2	1.80 GHz	6 MB	800 MHz FSB	45 nm	17 W		BGA956	AV80576LG0336M	
P8400	Penryn	Q3'08	2 / 2	2.26 GHz	3 MB	1066 MHz FSB	45 nm	25 W		BGA479 / PGA478	AV80577SH0513M	AW80577SH0513M
L7500	Merom	Q3'06	2 / 2	1.60 GHz	4 MB	800 MHz FSB	65 nm	17 W		PBGA479	LE80537LG0254M	
L7400	Merom	Q3'06	2 / 2	1.50 GHz	4 MB	667 MHz FSB	65 nm	17 W		PBGA479	LE80537LF0214M	
INTEL® ATOM™ PROCESSOR												
Z530P	Silverthorne	Q2'08	1 / 2	1.60 GHz	512 KB	533 MHz FSB	45 nm	2.2 W		FCBGA437	CH80566EE025DW	
Z530	Silverthorne	Q2'08	1 / 2	1.60 GHz	512 KB	533 MHz FSB	45 nm	2 W		PBGA441		AC80566UE025DW
Z520PT	Silverthorne	Q2'08	1 / 2	1.33 GHz	512 KB	533 MHz FSB	45 nm	2.2 W		FCBGA437	CH80566EE014DT	
Z510PT	Silverthorne	Q2'08	1 / 2	1.10 GHz	512 KB	400 MHz FSB	45 nm	2.2 W		FCBGA437	CH80566EC005DT	
Z510P	Silverthorne	Q2'08	1 / 2	1.10 GHz	512 KB	400 MHz FSB	45 nm	2.2 W		FCBGA437	CH80566EC005DW	
Z510	Silverthorne	Q2'08	1 / 1	1.10 GHz	512 KB	400 MHz FSB	45 nm	2 W		FCBGA437		AC80566UC005DE
N2800	Cedarview	Q4'11	2 / 4	1.86 GHz	1 MB	2.5 GT/s DMI	32 nm	6.5 W	Yes	FCBGA559	DF8064101050503	
N2600	Cedarview	Q4'11	2 / 4	1.60 GHz	1 MB	2.5 GT/s DMI	32 nm	3.5 W	Yes	FCBGA559	DF8064101050706	
N455	Pineview	Q2'10	1 / 2	1.66 GHz	512 KB	2.5 GT/s DMI	45 nm	6.5 W	Yes	FCBGA559	AU80610006237AA	
N450	Pineview	Q1'10	1 / 2	1.66 GHz	512 KB	2.5 GT/s DMI	45 nm	5.5 W	Yes	FCBGA559	AU80610004653AA	
N270	Diamondville	Q2'08	1 / 2	1.60 GHz	512 KB	533 MHz FSB	45 nm	2.5 W		PBGA437		AU80586GE025D
E680T	Tunnel Creek	Q3'10	1 / 2	1.60 GHz	512 KB	2500 MHz	45 nm	4.5 W	Yes	FCBGA676	CT8061800735AB	
E680	Tunnel Creek	Q3'10	1 / 2	1.60 GHz	512 KB	2500 MHz	45 nm	4.5 W	Yes	FCBGA676	CT80618007035AA	
E660T	Tunnel Creek	Q3'10	1 / 2	1.3 GHz	512 KB	2500 MHz	45 nm	3.6 W	Yes	FCBGA676	CT80618003201AB	
E660	Tunnel Creek	Q3'10	1 / 2	1.3 GHz	512 KB	2500 MHz	45 nm	3.6 W	Yes	FCBGA676	CT80618003201AA	
E640T	Tunnel Creek	Q3'10	1 / 2	1.0 GHz	512 KB	2500 MHz	45 nm	3.6 W	Yes	FCBGA676	CT80618005841AB	
E640	Tunnel Creek	Q3'10	1 / 2	1.0 GHz	512 KB	2500 MHz	45 nm	3.6 W	Yes	FCBGA676	CT80618005841AA	
E620T	Tunnel Creek	Q3'10	1 / 2	600 MHz	512 KB	2500 MHz	45 nm	3.3 W	Yes	FCBGA676	CT80618005844AB	
E620	Tunnel Creek	Q3'10	1 / 2	600 MHz	512 KB	2500 MHz	45 nm	3.3 W	Yes	FCBGA676	CT80618005844AA	

Intel® Embedded Processors

Intel® Mobile Processors (Embedded)

Processor #	Code Name	Release	Cores / Threads	Clock Speed	Cache	Bus Speed	Lithography	Max TDP	Integrated Graphics	Socket	uFCBGA Tray Part #	uFCPGA Tray Part #
INTEL® PENTIUM® MOBILE PROCESSOR												
B915C	Gladden	Q2'12	2 / 4	1.50 GHz	3 MB			15 W	Yes	FCBGA1284	AV8062701147401	
INTEL® CORE™ i3 MOBILE PROCESSORS												
i3-3217UE	Ivy Bridge	Q3'12	2 / 4	1.60 GHz	3 MB	5 GT/s DMI	22 nm	17 W	Yes	FCBGA1023	AV8063801149500	
i3-3120ME	Ivy Bridge	Q3'12	2 / 4	2.40 GHz	3 MB	5 GT/s DMI	22 nm	35 W	Yes	FCBGA1023	AV8063801117300	AW8063801117901
i3-2340UE	Sandy Bridge	Q2'11	2 / 4	1.30 GHz	3 MB	5 GT/s DMI	32 nm	17 W	Yes	FCBGA1023	AV8062700849710	
i3-2330E	Sandy Bridge	Q2'11	2 / 4	2.20 GHz	3 MB	5 GT/s DMI	32 nm	35 W	Yes	FCPGA988	FF8062700849000	
i3-2310E	Sandy Bridge	Q1'11	2 / 4	2.10 GHz	3 MB	5 GT/s DMI	32 nm	35 W	Yes	FCBGA1023	AV8062700849116	
i3-330E	Arrandale	Q1'10	2 / 4	2.13 GHz	3 MB	2.5 GT/s DMI	32 nm	35 W	Yes	BGA1288	CN80617004467AC	
INTEL® CORE™ i5 MOBILE PROCESSORS												
i5-4300U	Haswell	Q3'13	2 / 4	1.90 GHz	3 MB		22 nm	15 W	Yes	FCBGA1168	CL8064701477400	
i5-4400E	Haswell	Q3'13	2 / 4	2.70 GHz	3 MB	5 GT/s DMI	22 nm	37 W	Yes	FCBGA1364	CL8064701483902	
i5-4402E	Haswell	Q3'13	2 / 4	1.60 GHz	3 MB	5 GT/s DMI	22 nm	25 W	Yes	FCBGA1364	CL8064701528501	
i5-3610ME	Ivy Bridge	Q2'12	2 / 4	3.30 GHz	3 MB	5 GT/s DMI	22 nm	35 W	Yes	FCBGA1023 / FCPGA988	AV8063801116102	AW8063801115901
i5-2515E	Sandy Bridge	Q1'11	2 / 4	2.50 GHz	3 MB	5 GT/s DMI	32 nm	35 W	Yes	FCBGA1023	AV8062700853208	
i5-2510E	Sandy Bridge	Q1'11	2 / 4	2.50 GHz	3 MB	5 GT/s DMI	32 nm	35 W	Yes	FCPGA988	FF8062700853304	
i5-520M	Arrandale	Q1'10	2 / 4	2.40 GHz	3 MB	2.5 GT/s DMI	32 nm	35 W	Yes	PGA988	CP80617004119AE	
i5-520E	Arrandale	Q1'10	2 / 4	2.40 GHz	3 MB	2.5 GT/s DMI	32 nm	35 W	Yes	BGA1288	CN80617004461AB	
INTEL® CORE™ i7 MOBILE PROCESSORS												
i7-4650U	Haswell	Q2'13	2 / 4	1.70 GHz	4 MB		22 nm	15 W	Yes	FCBGA1168	CL8064701462800	
i7-4700EQ	Haswell	Q2'13	4 / 8	2.40 GHz	6 MB	5 GT/s DMI	22 nm	47 W	Yes	FCBGA1364	CL8064701483802	
i7-3615QE	Ivy Bridge	Q2'12	4 / 8	2.30 GHz	6 MB	5 GT/s DMI	22 nm	45 W	Yes	FCBGA1023	AV8063801117503	
i7-3612QE	Ivy Bridge	Q2'12	4 / 8	2.10 GHz	6 MB	5 GT/s DMI	22 nm	35 W	Yes	FCBGA1023	AV8063801149203	
i7-3610UE	Ivy Bridge	Q2'12	4 / 8	2.30 GHz	6 MB	5 GT/s DMI	22 nm	45 W	Yes	FCPGA988		AW8063801118306
i7-3555LE	Ivy Bridge	Q2'12	2 / 4	2.50 GHz	4 MB	5 GT/s DMI	22 nm	25 W	Yes	FCBGA1023	AV8063801116903	
i7-3517UE	Ivy Bridge	Q2'12	2 / 4	1.70 GHz	4 MB	5 GT/s DMI	22 nm	17 W	Yes	FCBGA1023	AV8063801149402	
i7-2715QE	Sandy Bridge	Q1'11	4 / 8	2.10 GHz	6 MB	5 GT/s DMI	32 nm	45 W	Yes	FCBGA1023	AV8062700843908	
i7-2710QE	Sandy Bridge	Q1'11	4 / 8	2.10 GHz	6 MB	5 GT/s DMI	32 nm	45 W	Yes	FCPGA988	FF8062700841002	
i7-2655LE	Sandy Bridge	Q1'11	2 / 4	2.20 GHz	4 MB	5 GT/s DMI	32 nm	25 W	Yes	FCBGA1023	AV8062700849508	
i7-2610UE	Sandy Bridge	Q1'11	2 / 4	1.50 GHz	4 MB	5 GT/s DMI	32 nm	17 W	Yes	FCBGA1023	AV8062700849607	
i7-660UE	Arrandale	Q1'10	2 / 4	1.33 GHz	4 MB	2.5 GT/s DMI	32 nm	18 W	Yes	BGA1288	CN80617006204AA	
i7-620UE	Arrandale	Q1'10	2 / 4	1.06 GHz	4 MB	2.5 GT/s DMI	32 nm	18 W	Yes	BGA1288	CN80617004458AB	
i7-620M	Arrandale	Q1'10	2 / 4	2.66 GHz	4 MB	2.5 GT/s DMI	32 nm	35 W	Yes	PGA988	CP80617003981AH	
i7-620LE	Arrandale	Q1'10	2 / 4	2.00 GHz	4 MB	2.5 GT/s DMI	32 nm	25 W	Yes	BGA1288	CN80617004455AB	
i7-610E	Arrandale	Q1'10	2 / 4	2.53 GHz	4 MB	2.5 GT/s DMI	32 nm	35 W	Yes	BGA1288	CN80617005745AB	

Intel® Server Processors (Embedded)

Processor #	Code Name	Release	Cores / Threads	Clock Speed	Cache	Bus Speed	Lithography	Max TDP	Integrated Graphics	Max CPU	Socket	OEM Tray Part #	Retail Boxed Part #
INTEL® XEON® PROCESSOR E3 FAMILY													
E3-1275 v3	Haswell	Q2'13	4 / 8	3.50 GHz	8 MB	5 GT/s DMI	22 nm	84 W	Yes	1	FCLGA1150	CM8064601466508	BX80646E31275V3
E3-1275 v2	Ivy Bridge	Q2'12	4 / 8	3.50 GHz	8 MB	5 GT/s DMI	22 nm	77 W	Yes	1	FCLGA1155	CM8063701098702	BX80637E31275V2
E3-1275	Sandy Bridge	Q2'11	4 / 8	3.40 GHz	8 MB	5 GT/s DMI	32 nm	95 W	Yes	1	LGA1155	CM8062307262003	BX80623E31275
E3-1268L v3	Haswell	Q2'13	4 / 8	2.30 GHz	8 MB	5 GT/s DMI	22 nm	45 W	Yes	1	FCLGA1150	CM8064601484200	
E3-1225 v3	Haswell	Q2'13	4 / 4	3.20 GHz	8 MB	5 GT/s DMI	22 nm	84 W	Yes	1	FCLGA1150	CM8064601466507	BX80646E31225V3
E3-1225 v2	Ivy Bridge	Q2'12	4 / 4	3.20 GHz	8 MB	5 GT/s DMI	22 nm	77 W	Yes	1	FCLGA1155	CM8063701160603	BX80637E31225V2
E3-1225	Sandy Bridge	Q2'11	4 / 4	3.10 GHz	6 MB	5 GT/s DMI	32 nm	95 W	Yes	1	LGA1155	CM8062307262304	BX80623E31225
E3-1125C v2	Gladden	Q3'13	4 / 8	2.00 GHz	8 MB	5 GT/s DMI	22 nm	40 W		1	FCBGA1284	CN8063801193902	
E3-1125C	Gladden	Q2'12	4 / 8	2.00 GHz	8 MB			40 W		1	FCBGA1284	AV8062701146600	
E3-1105C v2	Gladden	Q3'13	4 / 8	1.80 GHz	8 MB	5 GT/s DMI	22 nm	25 W		1	FCBGA1284	CN8063801194002	
E3-1105C	Gladden	Q2'12	4 / 8	1.00 GHz	6 MB			25 W		1	FCBGA1284	AV8062701048800	
INTEL® XEON® PROCESSOR E5 FAMILY													
E5-2680 v2	Ivy Bridge	Q3'13	10 / 20	2.80 GHz	25 MB	8.0 GT/s QPI	22 nm	115 W		2	FCLGA2011	CM8063501374901	WX80635E52680V2
E5-2658 v2	Ivy Bridge	Q3'13	10 / 20	2.40 GHz	25 MB	8.0 GT/s QPI	22 nm	95 W		2	FCLGA2011	CM8063501293200	
E5-2658	Sandy Bridge-EP	Q1'12	8 / 16	2.10 GHz	20 MB	8.0 GT/s QPI	32 nm	95 W	No	2	FCLGA2011	CM8062101042805	
E4-2648L v2	Ivy Bridge	Q3'13	10 / 20	1.90 GHz	25 MB	8.0 GT/s QPI	22 nm	70 W		2	FCLGA2011	CM8063501293506	

Intel® Embedded Processors

Intel® Server Processors (Embedded) (Cont.)

Processor #	Code Name	Release	Cores / Threads	Clock Speed	Cache	Bus Speed	Lithography	Max TDP	Integrated Graphics	Max CPU	Socket	OEM Tray Part #	Retail Boxed Part #
INTEL® XEON® PROCESSOR E5 FAMILY													
E5-2648L	Sandy Bridge-EP	Q1'12	8 / 16	1.80 GHz	20 MB	8.0 GT/s QPI	32 nm	70 W	No	2	FCLGA2011	CM8062100854905	
E5-2640 v2	Ivy Bridge	Q3'13	8 / 16	2.00 GHz	20 MB	7.2 GT/s QPI	22 nm	95 W		2	FCLGA2011	CM8063501288202	WX80635E52640V2
E5-2628L v2	Ivy Bridge	Q3'13	8 / 16	1.09 GHz	20 MB	7.2 GT/s QPI	22 nm	70 W		2	FCLGA2011	CM8063501522202	
E5-2630 v2	Ivy Bridge	Q3'13	6 / 12	2.60 GHz	15 MB	7.2 GT/s QPI	22 nm	80 W		2	FCLGA2011	CM8063501288100	
E5-2620	Sandy Bridge-EP	Q1'12	6 / 12	2.00 GHz	15 MB	7.2 GT/s QPI	32 nm	95 W	Yes	2	FCLGA2011	CM8062101048401	BX80621E52620
E5-2618L v2	Ivy Bridge	Roadmap	6 / 12	2.00 GHz	15 MB	6.4 GT/s QPI	22 nm	50 W		2	FCLGA2011	CM8063501521302	
E5-2450 v2	Ivy Bridge	Roadmap	8 / 16	2.50 GHz	20 MB	8.0 GT/s QPI	22 nm	95 W			FCLGA1356	CM8063401376400	
E5-2448L v2	Ivy Bridge	Roadmap	10 / 20	1.80 GHz	25 MB	8.0 GT/s QPI	22 nm	70 W			FCLGA1356	CM8063401293802	
E5-2448L	Sandy Bridge-EP	Q2'12	8 / 16	1.80 GHz	20 MB	8.0 GT/s QPI	32 nm	70 W	No	2	FCLGA1356	CM8062007187409	
E5-2430 v2	Ivy Bridge	Roadmap	6 / 12	2.50 GHz	15 MB	7.2 GT/s QPI	22 nm	80 W			FCLGA1356	CM8063401286400	
E5-2430	Sandy Bridge-EP	Q2'12	6 / 12	2.20 GHz	15 MB	7.2 GT/s QPI	32 nm	95 W		2	FCLGA1356	CM8062001122601	BX80621E52430
E5-2428L v2	Ivy Bridge	Roadmap	8 / 16	2.30 GHz	20 MB	7.2 GT/s QPI	22 nm	60 W			FCLGA1356	CM8063401293902	
E5-2428L	Sandy Bridge-EP	Q2'12	6 / 12	1.80 GHz	15 MB	7.2 GT/s QPI	32 nm	60 W	No	2	FCLGA1356	CM8062007187509	
E5-2418L v2	Ivy Bridge	Roadmap	6 / 12	2.00 GHz	15 MB	6.4 GT/s QPI	22 nm	50 W			FCLGA1356	CM8063401294008	
E5-2418L	Sandy Bridge-EP	Q2'12	4 / 8	2.00 GHz	10 MB	6.4 GT/s QPI	32 nm	50 W	No	2	FCLGA1356	CM8062000911406	
E5-1428L v2	Ivy Bridge	Roadmap	6 / 12	2.20 GHz	15 MB			60 W			FCLGA1356	TBD	
INTEL® XEON® PROCESSOR 3000 SEQUENCE													
X3450	Lynnfield	Q3'09	4 / 8	2.66 GHz	8 MB	2.5 GT/s DMI	45 nm	95 W	No	1	LGA1156	BV80605001911AQ	BX80605X3450
X3430	Lynnfield	Q3'09	4 / 4	2.40 GHz	8 MB	2.5 GT/s DMI	45 nm	95 W	No	1	LGA1156	BV80605001914AG	BX80605X3430
INTEL® XEON® PROCESSOR 5000 SEQUENCE													
LV 5148	Woodcrest	Q2'06	2 / 2	2.33 GHz	4 MB	1333 MHz FSB	65 nm	40 W			LGA771	HH8056JJ0534M	
LV 5138	Woodcrest	Q2'06	2 / 2	2.13 GHz	4 MB	1066 MHz FSB	65 nm	35 W			LGA771	HH80556JH0464M	
LV 5128	Woodcrest	Q2'06	2 / 2	1.86 GHz	4 MB	1066 MHz FSB	65 nm	40 W			LGA771	HH80556JH0364M	
LC5528	Jasper Forest	Q1'10	4 / 8	2.13 GHz	8 MB	4.8 GT/s QPI	45 nm	60 W		2	FCLGA1366	AT80612003858AA	
LC5518	Jasper Forest	Q1'10	4 / 8	1.73 GHz	8 MB	4.8 GT/s QPI	45 nm	48 W		2	FCLGA1366	AT80612002928AC	
LC3528	Jasper Forest	Q1'10	2 / 4	1.73 GHz	4 MB	2.5 GT/s DMI	45 nm	35 W		1	FCLGA1366	AT80612002931AB	
LC3518	Jasper Forest	Q1'10	1 / 1	1.73 GHz	2 MB	2.5 GT/s DMI	45 nm	23 W		1	FCLGA1366	AT80612002946AA	
L5638	Westmere-EP	Q1'10	6 / 12	2.00 GHz	12 MB	5.86 GT/s QPI	32 nm	60 W			FCLGA1366	AT80614003591AB	
L5618	Westmere-EP	Q1'10	4 / 8	1.87 GHz	12 MB	5.86 GT/s QPI	32 nm	40 W			FCLGA1366	AT80614005079AB	
L5518	Nehalem-EP	Q1'09	4 / 8	2.13 GHz	8 MB	5 GT/s DMI	45 nm	60 W		2	FCLGA1366	AT80602002265AB	
L5508	Nehalem-EP	Q1'09	2 / 4	2.00 GHz	8 MB	5 GT/s DMI	45 nm	38 W		2	FCLGA1366	AT80602002697AC	
L5410	Harpertown	Q1'08	4 / 4	2.33 GHz	12 MB	1333 MHz FSB	45 nm	50 W			LGA771	AT80574JJ053N	
L5408	Harpertown	Q1'08	4 / 4	2.13 GHz	12 MB	1066 MHz FSB	45 nm	40 W			LGA771	AT80574JH046NT	
L5318	Clovertown	Q1'07	4 / 4	1.60 GHz	8 MB	1066 MHz FSB	65 nm	40 W			PLGA771	HH80563JH0258MT	
L5238	Wolfdale	Q1'08	2 / 2	2.66 MHz	6 MB	1333 MHz FSB	45 nm	35 W			LGA771	AT80573JJ0676MT	
EC5549	Jasper Forest	Q1'10	4 / 8	2.56 GHz	8 MB	5 GT/s DMI	45 nm	85 W		2	FCLGA1366	AT80612005712AB	
EC5539	Jasper Forest	Q1'10	2 / 2	2.27 GHz	4 MB	5 GT/s DMI	45 nm	65 W		2	FCLGA1366	AT80612003861AB	
EC5509	Jasper Forest	Q1'10	4 / 4	2.00 GHz	8 MB	4.8 GT/s QPI	45 nm	85 W		2	FCLGA1366	AT80612004740AA	
EC3539	Jasper Forest	Q1'10	4 / 4	2.13 GHz	8 MB	2.5 GT/s DMI	45 nm	65 W		1	FCLGA1366	AT80612003090AA	
E5645	Westmere-EP	Q1'10	6 / 12	2.40 GHz	12 MB	5.86 GT/s QPI	32 nm	80 W	No	2	FCLGA1366	AT80614003597AC	BX80614E5645
E5620	Westmere-EP	Q1'10	4 / 8	2.40 GHz	12 MB	5.86 GT/s QPI	32 nm	80 W	No	2	FCLGA1366	AT80614005073AB	BX80614E5620
E5540	Westmere-EP	Q1'09	4 / 8	2.53 GHz	8 MB	5.86 GT/s QPI	45 nm	80 W	No	2	FCLGA1366	AT80602000789AA	BX80602E5540
E5504	Nehalem-EP	Q1'09	4 / 4	2.00 GHz	4 MB	4.8 GT/s QPI	45 nm	80 W		2	FCLGA1366	AT80602000801AA	BX80602E5504
E5440	Harpertown	Q1'08	4 / 4	2.83 GHz	12 MB	1333 MHz FSB	45 nm	80 W			LGA771	AT80574KJ073N	
E5345	Clovertown	Q1'07	4 / 4	2.33 GHz	8 MB	1333 MHz FSB	65 nm	80 W			PLGA771	HH80563QJ0538M	
E5335	Clovertown	Q1'07	4 / 4	2.00 GHz	8 MB	1333 MHz FSB	65 nm	80 W			PLGA771	HH80563QJ0418M	
E5240	Wolfdale	Q1'08	2 / 2	3.00 GHz	6 MB	1333 MHz FSB	65 nm	65 W			LGA771	AT80573QJ0806M	
E5220	Wolfdale	Q1'08	2 / 2	2.33 GHz	6 MB	1333 MHz FSB	45 nm	65 W			LGA771	AT80573QJ0536M	
5140	Woodcrest	Q2'06	2 / 2	2.33 GHz	4 MB	1333 MHz FSB	65 nm	65 W			LGA771	HH80556KJ0534M	

**Please refer to <http://ark.intel.com> for updated availability information.

Next Unit of Computing DC3217BY



The Shape that Fits the Future

Copyright © 2012 Intel Corporation. All rights reserved. Intel, the Intel logo, and Intel Core are trademarks of Intel Corporation in the U.S. and other countries.
*Other names and brands may be claimed as the property of others.

Visit www.em.avnet/intel for more information about Intel products.



Accelerating Your Success™

1-800-332-8638
www.em.avnet.com