



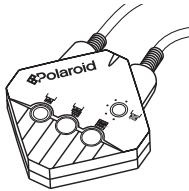
Direct Connect Adapter

User Guide

Table Of Contents

What is the Polaroid Direct Connect adapter?	5
Direct Connect features	5
What is in the Direct Connect package	6
About the adapter	7
Setting up the Direct Connect adapter	8
❶ Install the software	8
❷ Connect the adapter to your computer	9
❸ Start the configuration software	10
❹ Select a camera	10
❺ Select a printer	11
❻ Add a watermark to your pictures	12
❼ Choose a picture format	16
Printing with the Direct Connect adapter	18
Connecting the camera, adapter and printer	18
Printing modes	19
Printing steps	20
Solving problems	22
Direct Connect software cannot find serial port	22
Adapter does not print	23
About LED indicator codes	25
Obtaining technical assistance	27
Within the U.S.A.	27
Outside the U.S.A.	27
Internet support	27
Polaroid Technical Support telephone numbers	28
Repair service	28
Obtaining configuration files for additional cameras	29
Limited Equipment Warranty	31
FCC notices	31
Software license agreement	32

What is the Polaroid Direct Connect adapter?



The Polaroid Direct Connect adapter lets you print photographic-quality digital pictures from your digital camera – without your computer. The adapter connects your camera directly to your Polaroid ColorShot Photo Printer so you can print self-developing, full-color pictures any time, any place.

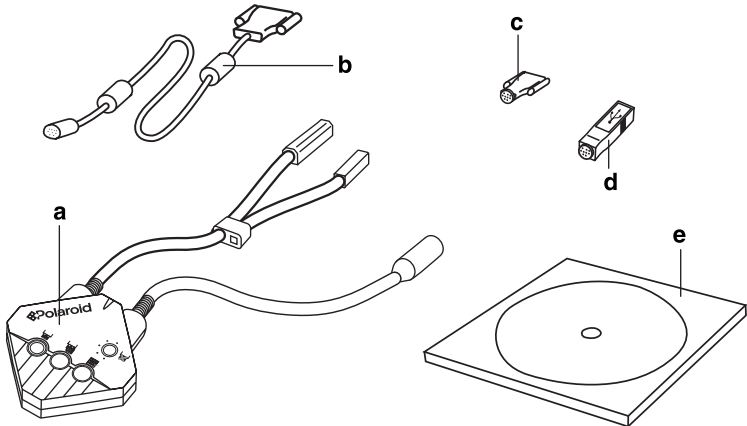
To print a digital picture from your camera, display the picture on the camera's LCD panel and press the print button on the Direct Connect adapter. The adapter also has other modes for printing all pictures and printing an index picture with several thumbnails (small pictures) on one sheet of film. Additionally, you can add a watermark (a graphic logo and text) to each picture.

Direct Connect features

- No computer needed for printing pictures from your digital camera
- Sets up easily with your PC, then prints without the computer
- Small and lightweight
- Works with digital cameras from leading manufacturers such as Olympus, Agfa, Epson and Casio
- Can be upgraded to support additional cameras from other manufacturers such as Kodak
- Offers multiple modes for printing single pictures, all pictures in the camera at once, and indexes (several pictures on each sheet)
- Capable of adding a logo and text (watermark) to pictures

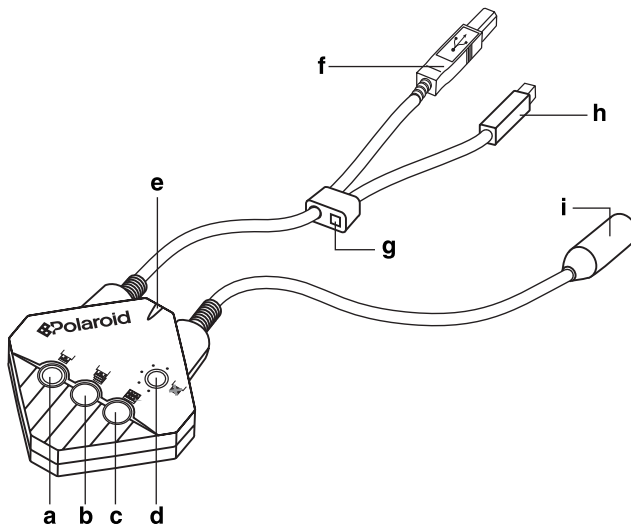
Note: The quality of pictures printed with the Direct Connect adapter depends on the quality of the pictures captured by the digital camera. Picture quality can vary considerably among digital camera models.

What is in the Direct Connect package



- a** Direct Connect adapter
- b** Computer interface cable
- c** Serial camera connector
- d** USB camera connector
- e** Direct Connect configuration software on CD-ROM
- f** User's guide (not shown)

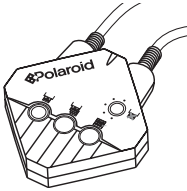
About the adapter



- a** Print button
- b** Print All button
- c** Print Index button
- d** Select Picture/Cancel Print button
- e** LED indicator
- f** ColorShot Photo Printer USB or parallel connector (USB shown)
- g** Direct Connect power connector
- h** ColorShot printer power connector
- i** Camera and computer connector

Setting up the Direct Connect adapter

Before printing with the adapter for the first time, you need to configure it with the Direct Connect Configuration Software. You can also use the software to change the setup later.



Using the software, you define:

- the digital camera you are using.
- the printer you are using.
- the option of adding a watermark to your pictures.
- the picture format: Best Fit to Page or Fill Entire Page.

To set up the adapter:

- 1** Install the software.
 - a** Start your computer.
 - b** Insert the Direct Connect CD-ROM in your CD-ROM drive.
 - c** Click the Start button and then click Run.
 - d** Type **x:setup.exe** (substitute the letter of your CD-ROM drive for **x**) and click OK.
 - e** Follow instructions on your screen to complete the installation.
 - f** Remove the CD-ROM from your CD-ROM drive.

- 2** Connect the adapter to your computer as shown in Figure 1.

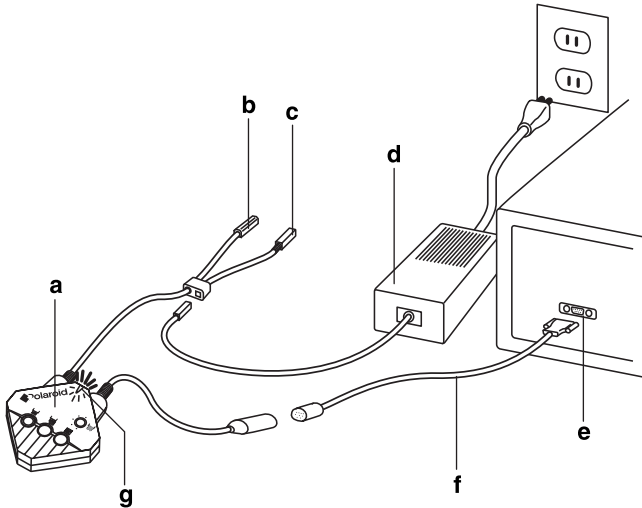


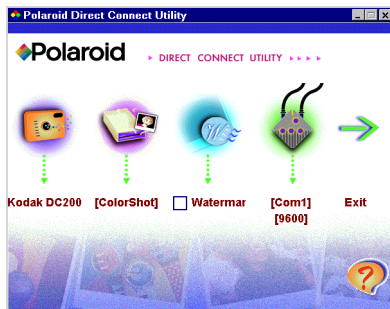
Figure 1. Connecting the adapter to your computer

- a** Direct Connect adapter
- b** Not connected (USB connector shown; Direct Connect parallel version has 25-pin connector instead)
- c** Not connected
- d** ColorShot power cord and adapter (provided with ColorShot printer)
- e** Serial port (COM1, COM2, etc.)
- f** Interface cable
- g** LED indicator (flashing red until you start the configuration software in the following step)

3 Start the configuration software.

- a Click Start and then click Programs.
- b Click Direct Connect Configuration Software

The main window opens.



The LED indicator on the adapter changes from flashing red to steady orange, indicating that the adapter and computer are communicating. If the indicator is not steady orange, see *Solving problems* on page 22.

4 Select a camera.

Note: The Direct Connect adapter can be set up for only one camera at a time. If you have multiple adapters set up for different cameras, you may want to label each adapter to indicate its current setup.



- a Click the Camera button to display a list of compatible digital cameras.

If you do not see your camera listed, see *Obtaining configuration files for additional cameras and printers* on page 29.



- b Click your camera model and then click the OK button to send the camera setup information to the adapter.

5 Select a printer.



- a** Click the Printer button to display a list of compatible printers.

If you do not see your printer listed, see *Obtaining configuration files for additional cameras and printers* on page 29.



- b** Click your printer model and then click the OK button to send the setup information to the adapter.

c If you ...	Then ...
are finished configuring the software	Click Exit The setup data is sent to the adapter.
want to add a watermark to your pictures	Continue to 6 <i>Add a watermark to your pictures.</i>
want to select a picture format	Skip to 7 <i>Choose a picture format</i> (page 16).

6 Add a watermark to your pictures.

You can use the Direct Connect configuration software to add a watermark containing a logo or text (or both) as shown in Figure 2 to all pictures you print.

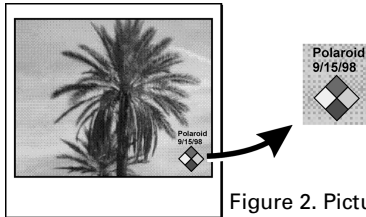


Figure 2. Picture with a watermark

The watermark location is limited to one of four picture quadrants, which you select during setup.

- a** At the Direct Connect software main window, click the Watermark button.

The current watermark location appears as a rectangle in one of the four quadrants of the image area, as shown in Figure 3.

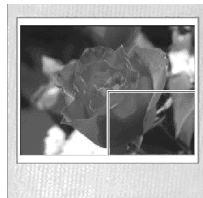


Figure 3. Watermark rectangle

- b** To choose a different quadrant for the watermark, click the desired quadrant to move the watermark rectangle. For example, to move the watermark rectangle to the

upper left quadrant as shown in Figure 4, click the upper left quadrant area.

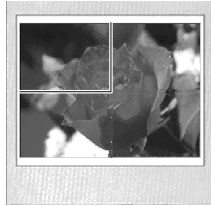




Figure 4. Watermark rectangle

- | c If you want to ... | Then ... |
|-------------------------------|--|
| create a new watermark |  Click the Create Watermark button and go to step d. |
| add a watermark saved earlier |  <ol style="list-style-type: none">1 Click the Load Watermark button.2 Choose the folder and the .BMP file containing the watermark.3 Click Open.4 Skip to step k on page 15. |





- d** Click the Load Image button and then choose the folder and file containing the logo.

The following file formats are supported:

.BMP	.PCX	.TGA
.ICO	.PNG	.TIF
.JPG	.PSD	.WMF

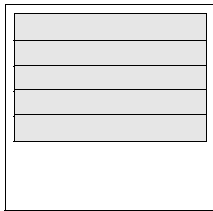
When you select the file, the logo appears in the selected quadrant.

e To change ...	Then ...
the logo location within the quadrant	Click inside the logo and drag it to its new location.
the logo size	Click an edge of the logo and drag it outward or inward.
the logo background or another color from solid to transparent so the picture shows through	 <ol style="list-style-type: none"><li data-bbox="739 423 899 544">1 Click the Transparent Color Selector button.<li data-bbox="739 557 920 678">2 Click the color in the logo you want to make transparent.
the logo background from transparent to solid so the picture does not show through	 Click the Cancel Transparent Color button.



f To add text to your pictures, click the Text button.

A text box with five blank lines appears.





g Click one of the lines, type the text you want to print, and then click the Text Format button to choose the font, style, size and font effects (underline, color, etc.) for the line.

h If necessary, repeat steps g to create additional text lines.



i After all the text lines are formatted, click the OK button.

j To change ...	Then ...
the text box location within the quadrant	Click inside the text box and drag it to its new location
the text box size	Click an edge of the text box and drag it outward or inward.



k When done, click the OK button and view the watermark in place on the picture.

l If you want to ...	Then ...
save the watermark logo and text as a .BMP file you can reuse later	<div data-bbox="636 768 700 826" data-label="Image"></div> <ol style="list-style-type: none"> 1 Click the Save Watermark button. 2 Choose a folder for the watermark file and type a file name. 3 Click Save. 4 Go to step m. <p>Go to step m.</p>
use the watermark on your pictures without saving it as a separate file	



m Click the OK button.

n If you ...	Then ...
are finished configuring the software	Click Exit. The setup data is sent to the adapter.
want to select a picture format	Continue to 7 <i>Choose a picture format</i>

7 Choose a picture format.

The Direct Connect Configuration Software lets you choose between two picture formats: Best Fit to Page, and Fill Entire Frame.

The Best Fit to Page format prints the complete picture. It may leave white borders on two edges of the picture if the aspect ratio of the picture (ratio of width to height) does not match the aspect ratio of the ColorShot film image area (6:5). See Figure 5.

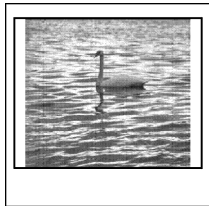


Figure 5. Best Fit to Page format

The Fill Entire Frame format eliminates any white borders on the picture. If the aspect ratio of the picture does not

match the film image area, the picture is cropped to fit the image area as shown in Figure 6.

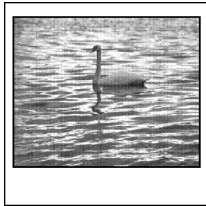


Figure 6. Fill Entire Frame format

To choose a picture format:



- a** At the Direct Connect Software main window, click the Settings button.
- b** In the Print Size box, click Fit to Page or Fill Entire Frame.
- c** Click the OK button.
- d** Click Exit to send the configuration data to the adapter and to close the configuration program.



Printing with the Direct Connect adapter

Connecting the camera, adapter and printer

Connect your camera to the Direct Connect adapter and the ColorShot printer as shown in Figure 7.

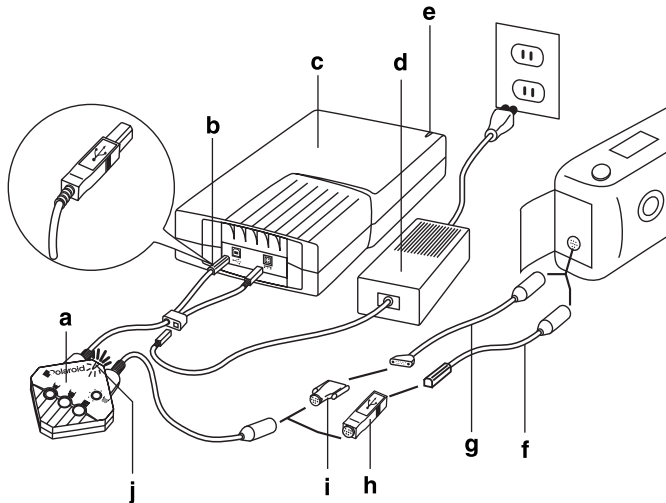


Figure 7. Connecting the adapter for printing

- a** Direct Connect adapter
- b** USB connector (The Direct Connect parallel version has a 25-pin connector instead.)
- c** ColorShot Photo Printer
- d** ColorShot power cord and adapter
- e** ColorShot LED indicator (steady green after all connections are complete)
- f** Camera-to-PC USB cable (provided with USB cameras)
- g** Camera-to-PC serial cable (provided with serial cameras)

- h** USB camera connector (provided with Direct Connect adapter) for use with camera-to-PC USB cable
- i** Serial camera connector (provided with Direct Connect adapter) for use with camera-to-PC serial cable
- j** Direct Connect LED indicator (alternates green and orange until camera communication is established)

Printing modes



Single print

Prints a single picture: the one most recently displayed in camera preview mode on the camera LCD.



Print all pictures

Prints all the pictures stored in the camera memory.



Print index

Prints all the pictures stored in the camera memory, with several pictures on one sheet.

Printing steps

Note: If the Direct Connect LED indicator displays flashing orange before or during these steps, the ColorShot Photo Printer is out of film. When this happens, load a new pack of film as shown in Figure 9. (The film cover ejects when you close and latch the film door.)

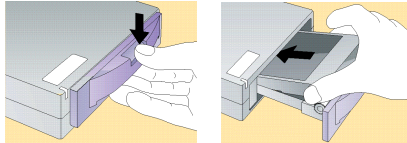


Figure 9. Loading the ColorShot Photo Printer

- 1 Turn on the camera.

See your camera instructions.

- 2 Set the camera to the PC Connect mode. (Your camera may use a different name for this mode.)

The adapter LED shows a steady orange, indicating communication among the adapter, camera and printer.

- 3 To print ...

Then ...

a single picture



- a Press the Picture Select button on the Direct Connect adapter to scroll through the pictures until the one you want to print appears. (Press the button twice rapidly to scroll backward.)



- b Press the Single Print Button.

To print ...

Then ...

all pictures
stored in camera



Press the Print All button.

index print(s)



Press the Print Index button.



Note: You can cancel printing by pressing the Picture Select/Cancel Print button.

If pictures do not appear on the camera LCD

Some digital cameras cannot display pictures on their LCD screen while connected to the Direct Connect adapter. If your camera does not display pictures while connected, use these steps to print a single picture:

- 1** Disconnect the Direct Connect cable from the camera.
- 2** Set the camera to the Review mode.
Your camera may have a different name for this mode. See the camera instructions.
- 3** Display the picture you want to print.
- 4** Reconnect the Direct Connect cable to the camera.
- 5** Set the camera to the PC Connect mode.
- 6** Press the Single Print button.



Solving problems

Direct Connect software cannot find serial port

Possible cause

Direct Connect adapter not powered on

Direct Connect adapter not connected to the computer

Computer screen-saver software interfering with communication

Serial port turned off by computer's power management software (some laptop computers)

Two devices (Direct Connect adapter and a modem, for example) attempting to use the same serial port

Software unable to automatically detect adapter

Solution

Verify that the LED indicator is on. If not, check the connections (page 9) and make sure AC power is available at the outlet.

Verify that the adapter is connected to a serial port on the computer before you start the configuration software.

See your computer's user guide and disable the screen saver

See your computer's user guide and disable automatic shutoff for the computer serial ports.

Move the Direct Connect adapter or the other device to a different serial port, or disable the other device. See your computer's user guide or the user guide for the conflicting device for instructions.

Manually choose the COM port:



- 1** At the Direct Connect Configuration Software main window, click the Settings button.
- 2** On the Communication Port drop-down list, click the COM port to which the adapter is connected.
- 3** Click the OK button.



Possible cause

Computer communication baud rate too high

Other condition as shown by the LED indicator

Solution

Manually select a low baud rate:



1 At the main window, click the Settings button.

2 On the Baud Rate list, click 19200 or 9600.



3 Click the OK button.

See *Computer connection codes* (page 25).

Adapter does not print

Possible cause

No film in printer (flashing orange adapter LED)

Direct Connect adapter not properly connected to camera and printer

Camera not powered on

Camera not in Connect mode

Solution

Insert a new pack of film (Figure 9 on page 20).

Check the connections as described on page 18, and verify that the adapter LED and the printer LED are both on.

Verify that the camera is on. See the camera instructions if necessary.

Verify that the camera is in the Connect mode before pressing the print button on the adapter. See the camera instructions if necessary.

Possible cause

Direct Connect adapter set up for wrong camera or printer

Other condition as shown by the adapter LED indicator

Camera problem

Printer problem

Solution.

Connect the adapter to your computer, start the configuration software, and choose the correct camera and printer. See *Setting up the Direct Connect adapter*, page 8.

See *Printer/digital camera connection codes (page 26)*.

Connect the camera to your computer according to the camera instructions and verify camera communication by transferring a picture from the camera to your computer.

Connect the printer to your computer according to the ColorShot instructions, and verify printer operation by printing a picture from your computer.

About LED indicator codes

The LED indicator on the Direct Connect adapter can help you troubleshoot connection and printing problems. The meaning of the codes depends on whether the adapter is connected to your computer for setup or to the ColorShot printer.

Computer connection codes

LED state	Meaning	Suggested action
Off	No power to adapter	Connect adapter to power supply (page 9).
Slowly flashing red	No communication with computer; attempting to establish communication	Start Direct Connect configuration software to establish communications.
Steady orange	Communication with computer established	Continue with procedure (normal indication).
Flashing green	Transferring setup data or busy with other operation	Continue with current procedure (normal indication).
Occasional red flash while flashing green	Missed communication packet	Repeat operation just completed.
Rapidly flashing red	Serial communication problem	Unplug adapter from power supply and reconnect. Repeat operation just completed.

Printer/digital camera connection codes

LED state	Meaning	Suggested action
Off	No power to adapter	Connect adapter to power supply (page 18).
Steady orange	Communication with printer and camera established	Print when ready (normal indication).
Flashing green	Printing	Wait for picture to eject from printer (normal indication).
Flashing orange	Printer out of film	Insert new film pack in ColorShot printer.
Alternating green and orange	No communication with camera	Make sure camera is in correct mode for printing. (See <i>Printing steps</i> on page 20.)
Alternating red and orange	No communication with printer	Make sure printer is connected properly and printer LED is lighted (page 18).
Alternating red and green	No communication with camera or printer	Make sure camera is in correct mode for printing. (See <i>Printing steps</i> on page 20.) Make sure printer is connected properly and printer LED is lighted (page 18).
Flashing red	Communication or software error	Unplug adapter from power supply and reconnect. Repeat operation just completed.

Obtaining technical assistance

Before calling for technical assistance, be sure to check the problem-solving information in the previous sections. If none of the suggested actions solves your problem, contact Polaroid Technical Assistance as follows.

Within the U.S.A.

Call us toll-free from within the continental U.S.A. at 1-800-432-5355, Monday through Friday, 8 a.m. to 8 p.m., Eastern time. We offer a variety of Customer Support services; call for details and applicable fees.

You may also write to Polaroid National Technical Support Operations, 201 Burlington Rd. 1-2A, Bedford, MA 01730. Fax: 1-781-386-9688.

Outside the U.S.A.

See Polaroid Technical Support Telephone Numbers later in this section.

Internet support

Technical Support is also available over the Internet. Connect to the Polaroid site on the World Wide Web at <http://www.polaroid.com>.

Polaroid Technical Support telephone numbers

Australia (toll-free)

1800 242 640
Sydney Metro
(tel) 02 9842 7120

Austria

(tel) 06 60 74 33
(fax) 01 7956 7040

Belgium

(tel) 02 714 31 02
(fax) 02 713 12 18

Brazil

(tel) 55.11.285.6411
(fax) 55.11.283.2625

Canada

(tel) 1-800-268-6970

Denmark

(tel) 80 01 59 56
(fax) 80 88 09 19

Finland

(tel) 0800 117 008
(fax) 0800 118 051

France

(tel) 01 41 91 38 10
(fax) 01 41 91 86 54

Germany

(tel) 069 95 09 6056
(fax) 069 95 09 6218

Hong Kong

(tel) (852) 2894 0333

IItaly

(tel) 167 820050
(fax) 02 69633337

Japan

(tel) 81-3-3438-8811
(fax) 81-3-3433-3537

Luxembourg

(tel) 0800 25 42
(fax) 0800 31 86

Mexico

(tel) (01) 800 70-72777
(fax) (5) 703-3068

Netherlands

(tel) 020 487 45 34
(fax) 020 346 91 60

New Zealand

(tel) (09) 377 3773

Norway

(tel) 80 01 18 87
(fax) 0800 13626

Portugal

(tel) 0505446017

Puerto Rico

(tel) (809) 725-6240
(fax) (809) 725-5462

Spain

(tel) 91 377 81 03
(fax) 91 406 93 33

Suomi

(tel) 0800117008

Sweden

(tel) 08 4451 231
(fax) 08 4451 223

Switzerland (French)

(tel) 01 838 53 49
(fax) 01 800 90 62

Switzerland (German)

(tel) 01 838 53 29
(fax) 01 800 90 62

Switzerland (Italian)

(tel) 01 838 53 48
(fax) 01 800 90 62

UK

(tel) 0181 308 6508
(fax) 0181 308 6585

USA

(tel) 1-800-432-5355
(fax) 1-781-386-9688

Repair service

Before you return equipment for repair, please call Polaroid Technical Assistance as described on page 27. We can help you determine what is at fault, and advise you on how and where to get service in the quickest and most convenient way.

Obtaining configuration files for additional cameras and printers

Software for configuring the Direct Connect adapter for additional digital cameras and printers is under development. For information about configuration files that became available after this user guide was printed, visit us at <http://www.polaroid.com> or call Technical Assistance as described in the previous section.

To install a new configuration file:

- 1** Download the .PCC file for the camera or the .PCP file for the printer to your computer hard drive or insert a diskette containing the file into your floppy drive.
- 2** Connect the Direct Connect adapter to your computer (page 9) and start the Direct Connect configuration software (page 10).

3 To install ...

Then ...

a camera
configuration
file



- a** Click the Camera button
- b** Navigate to the drive and folder containing the .PCC file for the new camera, click the file name, and click Open.
The new camera appears on the list of installed cameras.
- c** Click the camera name and then click the OK button.

a printer
configuration
file



- a** Click the Printer button
 - b** Navigate to the drive and folder containing the .PCP file for the new printer, click the file name, and click Open.
The new printer appears on the list of installed printers.
 - c** Click the printer name and then click the OK button.
-

Limited Equipment Warranty

Polaroid Corporation warrants your Polaroid Direct Connect adapter against defects in manufacture for a period of one year from the date of purchase. To verify the warranty period, you should keep the sales receipt or other proof of the purchase date.

Should this product, or any component or accessory included with it, become defective at any time during the warranty period, Polaroid Corporation will, at its discretion, either repair or replace this item, without charge, provided the product is returned prepaid and insured to a designated servicing location. Please return the product in its original packaging.

This Limited Warranty does not apply to product damage resulting from accident, incorrect installation, unauthorized modification, misuse or abuse.

Warning: Opening the adapter housing voids the warranty.

Outside the U.S.A. and Canada, refer to the registration card for local warranty conditions.

THIS WARRANTY EXCLUDES ALL INCIDENTAL AND CONSEQUENTIAL DAMAGES AND DOES NOT AFFECT YOUR STATUTORY RIGHTS.

FCC notices

FCC COMPLIANCE

Product: The Polaroid Direct Connect Adapter

Marketed by: Polaroid Corporation, 575 Technology Square, Cambridge, MA 02139 U.S.A. Telephone: 1-800-432-5355

This device complies with Part 15 of the FCC Rules. Operation is subject to the following two conditions: (1) This device may not cause harmful interference, and (2) this device must accept any interference received, including interference that may cause undesired operation.

FCC NOTICE: RADIO AND TELEVISION INTERFERENCE

Note: This equipment has been tested and verified for compliance with the limits for a Class B digital device pursuant to Part 15 of the FCC Rules. These limits are designed to provide reasonable protection against harmful interference in a residential installation. This equipment generates, uses and can radiate radio frequency energy and, if not installed and used in accordance with the instructions, may cause harmful interference to radio communication. However, there is no guarantee that interference will not occur in a particular installation. If this equipment does cause harmful interference to radio or television reception, which can be determined by turning the equipment off and on, the user is encouraged to try to correct the interference by one or more of the following measures:

- Reorient the receiving antenna
- Increase the separation between the equipment and the receiver
- Connect the equipment into an outlet on a circuit different from that to which the receiver is connected
- Consult the dealer or an experienced radio-TV technician for help

Changes and modifications not expressly approved by the manufacturer or registrant of this equipment can void your authority to operate this equipment under Federal Communications Commission rules.

Software license agreement

Polaroid End User License Agreement

IMPORTANT: THIS IS A LEGAL AGREEMENT. BY INSTALLING THIS SOFTWARE, YOU ACCEPT ALL THE TERMS AND CONDITIONS OF THIS AGREEMENT.

This Polaroid Corporation ("Polaroid") End User License Agreement ("Agreement") is provided with the "Polaroid Direct Connect Configuration Software" product and related documentation (collectively, "Software"). The term Software also shall include any upgrades, enhancements or updates of the Software. Please

read this Agreement carefully because at the end you will be asked to accept the terms and conditions of this Agreement and continue the installation process or , if you do not wish to accept these terms and conditions, to decline, in which case the installation process will be aborted and you will not be able to use the Software. If you decline to accept the terms and conditions of this Agreement, thereafter you may restart the installation and accept the terms and conditions or return the Software to the place you obtained it for a full refund.

1. Grant of License. Polaroid grants to you the right to use one copy of the accompanying Polaroid Software on a single terminal connected to a single computer (i.e., with a single CPU). You may not network the Software or otherwise use it on more than one computer or computer terminal at the same time.

2. Copyright. The Software is owned by Polaroid or its suppliers and is protected by United States Copyright Laws and International Treaty provisions. Therefore, you must treat the Software like any other copyrighted material (e.g., a book or musical recording) except that you may either (a) make one copy of the Software solely for backup or archival purposes, or (b) transfer the Software to a single hard disk provided you keep the original solely for backup or archival purposes. You may not copy the written materials accompanying the software.

3. Other Restrictions. You agree not to modify, adapt, translate, reverse engineer, decompile, disassemble or otherwise attempt to discover the source code of the Software. You may not rent or lease the Software, but you may transfer the Software on a permanent basis provided you retain no copies and the recipient agrees to the terms of this Agreement. If Software is an update, any transfer must include the update and all prior versions.

4. Limited Warranty. Polaroid warrants that the Software media will be free of defects in materials and workmanship for a period of 90 days from the date of purchase. Polaroid's entire liability and your exclusive remedy shall be, at Polaroid's option, either (a) return of the price paid or (b) repair or replacement of the Software that does not meet Polaroid's Limited Warranty and which is returned to Polaroid with a copy of your sales receipt. This limited Warranty is void if failure of the Software has resulted from accident, abuse, or misapplication. Any replacement Software will be warranted for the remainder of the original warranty period or 30 days, whichever is longer.

5. No Other Warranties. POLAROID MAKES NO OTHER WARRANTIES WITH RESPECT TO THE SOFTWARE, EITHER EXPRESS OR

IMPLIED, INCLUDING BUT NOT LIMITED TO IMPLIED WARRANTIES OF MERCHANTABILITY AND FITNESS FOR A PARTICULAR PURPOSE. Some states and countries do not allow the exclusion of implied warranties, so the above exclusions may not apply to you.

6. Limitation of Liability. IN NO EVENT SHALL POLAROID OR ITS SUPPLIERS BE LIABLE FOR ANY CONSEQUENTIAL OR INCIDENTAL DAMAGES (INCLUDING, WITHOUT LIMITATION, DAMAGES FOR LOSS OF BUSINESS PROFITS, BUSINESS INTERRUPTION, LOSS OF BUSINESS INFORMATION, OR OTHER PECUNIARY LOSS) ARISING OUT OF THE USE OR INABILITY TO USE THIS POLAROID PRODUCT, EVEN IF POLAROID HAS BEEN ADVISED OF THE POSSIBILITY OF SUCH DAMAGES. Some states and countries do not allow the exclusion or limitation of liability for consequential or incidental damages, so above limitations may not apply to you.

7. U.S. Government Restricted Rights. The Software are provided with RESTRICTED RIGHTS. Use, duplication, or disclosure by the United States Government is subject to restrictions as set forth in subparagraph (c)(1)(ii) of the rights in Technical Data and Computer Software clause at DFAR 52.227-7013, or such other applicable government or agency regulations providing equivalent protection. Contractor/Manufacturer is Polaroid Corporation, 549 Technology Square, Cambridge, Massachusetts 02139.

8. Governing Law and General Provisions. This Agreement is governed by the laws of the Commonwealth of Massachusetts, USA, excluding its conflicts of law rules, and the laws of the United States of America. If any part of this Agreement is found void and unenforceable, it will not affect the validity of the balance of the Agreement, which shall remain valid and enforceable according to its terms. You agree that the Software will not be shipped, transferred or exported into any country or used in any manner prohibited by the United States Export Administration Act or any other export laws, restrictions or regulations. This Agreement shall automatically terminate upon failure by you to comply with its terms. This Agreement may only be modified in writing signed by an authorized officer of Polaroid.

Your acceptance of the foregoing agreement will be indicated during installation.

“Polaroid” and “Polaroid ColorShot” are trademarks of Polaroid Corporation, Cambridge, MA, U.S.A. All other product names may be trademarks of their respective owners.

PN-00000X-0 9/98 Printed in U.S.A.