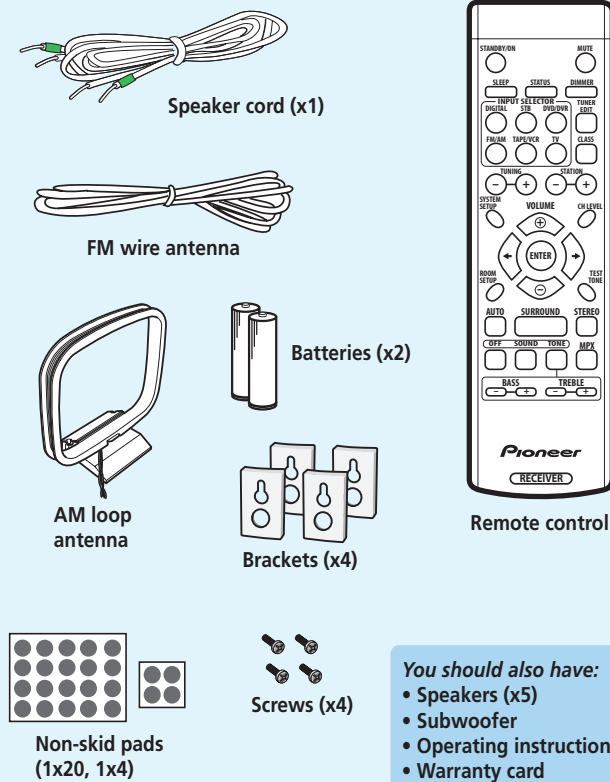
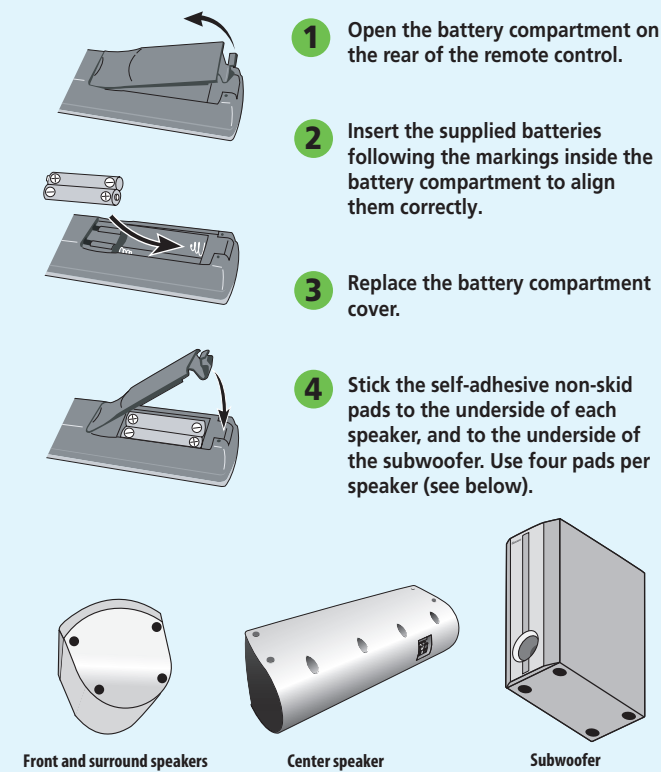


HTP-2500/2600 Quick Start Guide

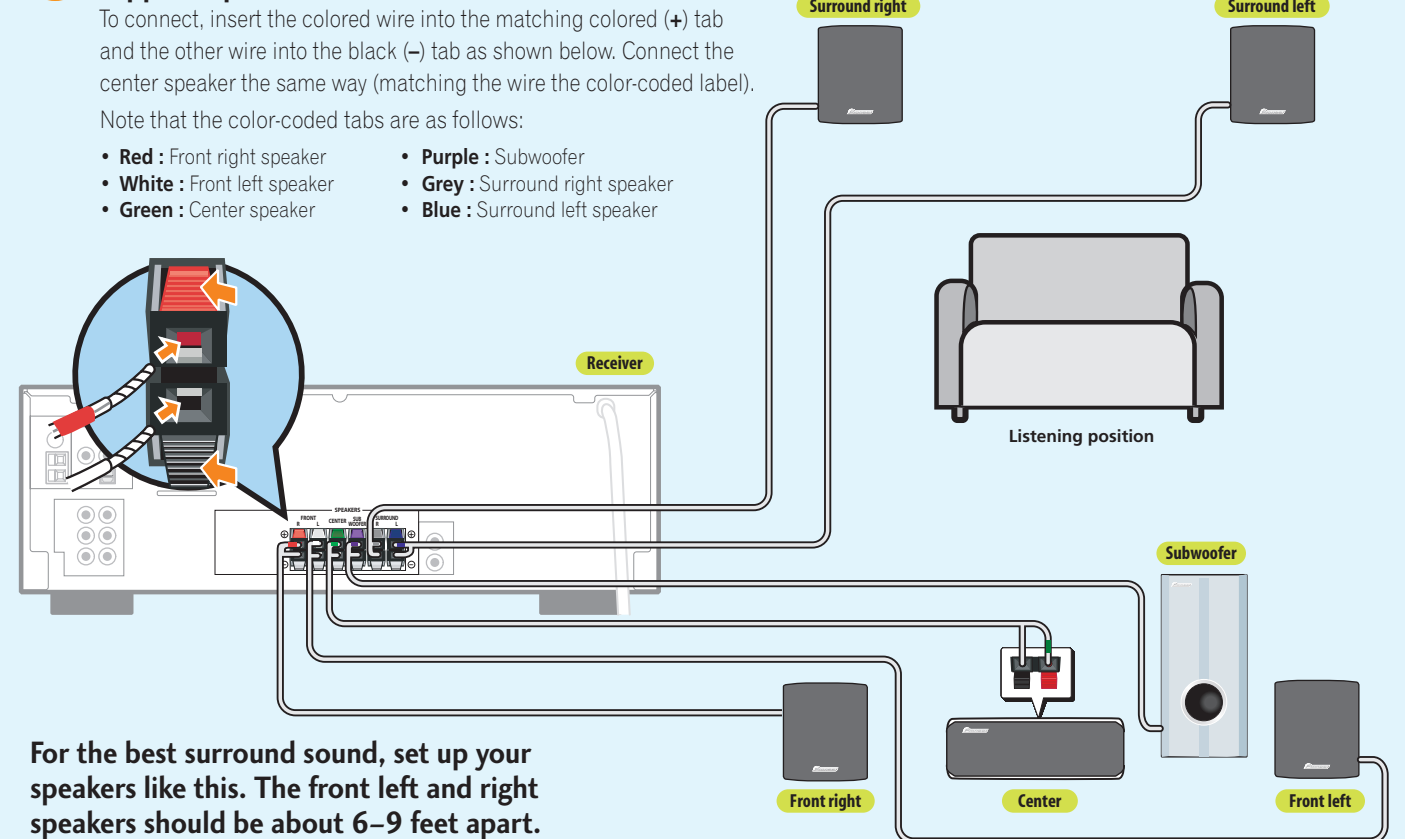
1 Check that you have all the accessories.



2 Put the batteries in the remote control and stick the non-skid pads to the base of the speakers.

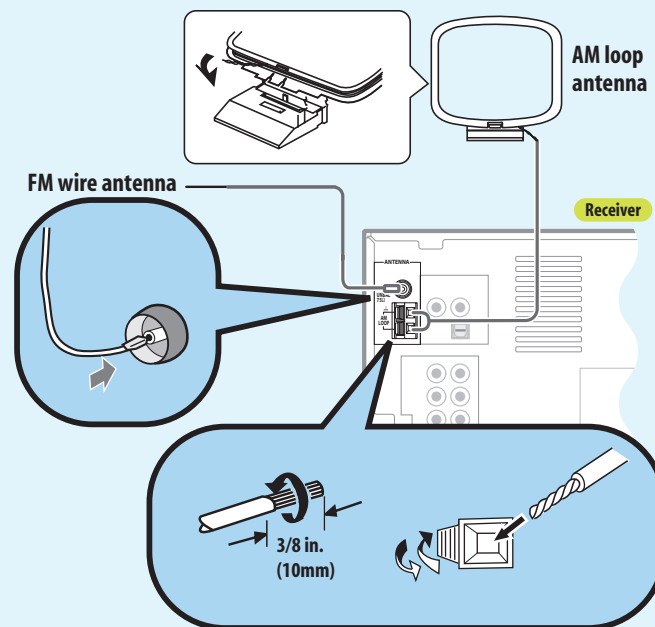


3 Connect each speaker to the receiver using the supplied speaker wires.



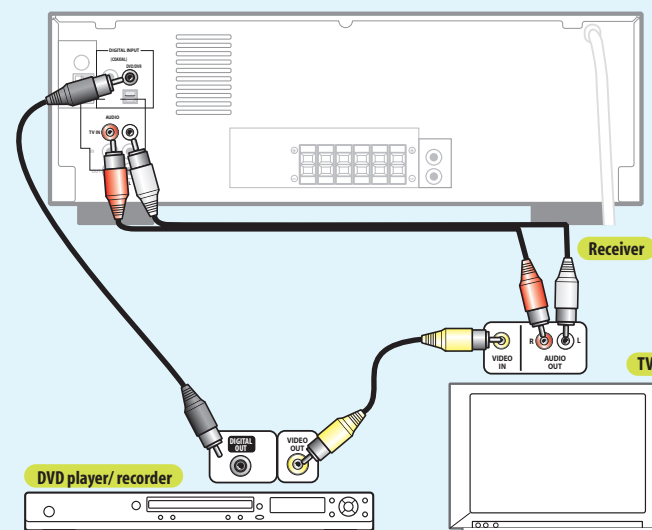
4 Connect antennas

- 1 Connect the FM wire antenna and fully extend along a window frame or another suitable place that gives good reception.
- 2 To connect the AM loop antenna, twist the exposed wire strands together and insert into the terminal, then snap the connector shut as shown below.



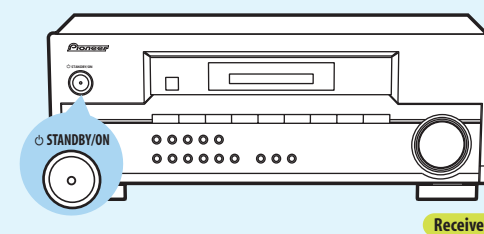
5 Connect the receiver to your DVD player/ recorder.

- 1 Use a coaxial digital cord (not supplied) to connect the digital output of your DVD player/ recorder to the DIGITAL INPUT (COAXIAL) DVD/DVR jack.
 - 2 Use a red/white stereo audio cord (not supplied) to connect the AUDIO TV IN jack on the receiver to the audio output on your TV.* This will allow you to listen to your TV through this speaker system.
- * Note that you must also connect the DVD player/ recorder's video output to your TV's video input to watch a DVD video (video cable is not supplied).

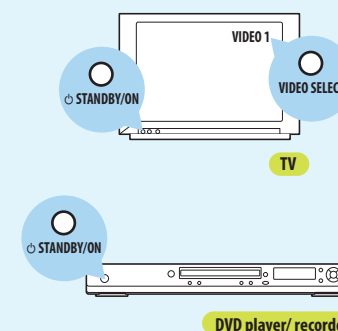


6 Plug the receiver, DVD player/ recorder and TV into a convenient AC outlet.

- 1 Press **STANDBY/ON** to switch on the receiver.

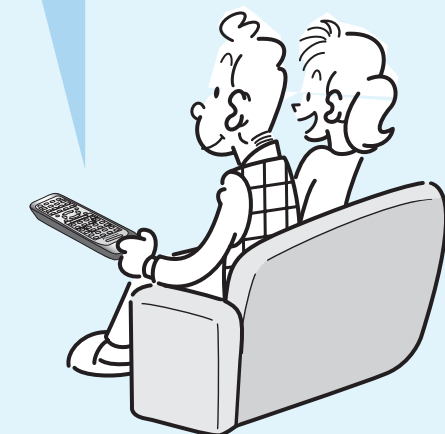
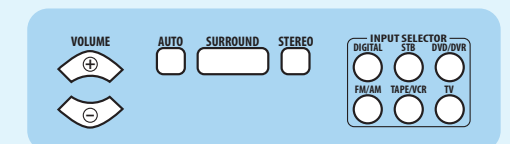


- 2 Switch on your DVD player/ recorder and TV, and set the TV to the correct video input.



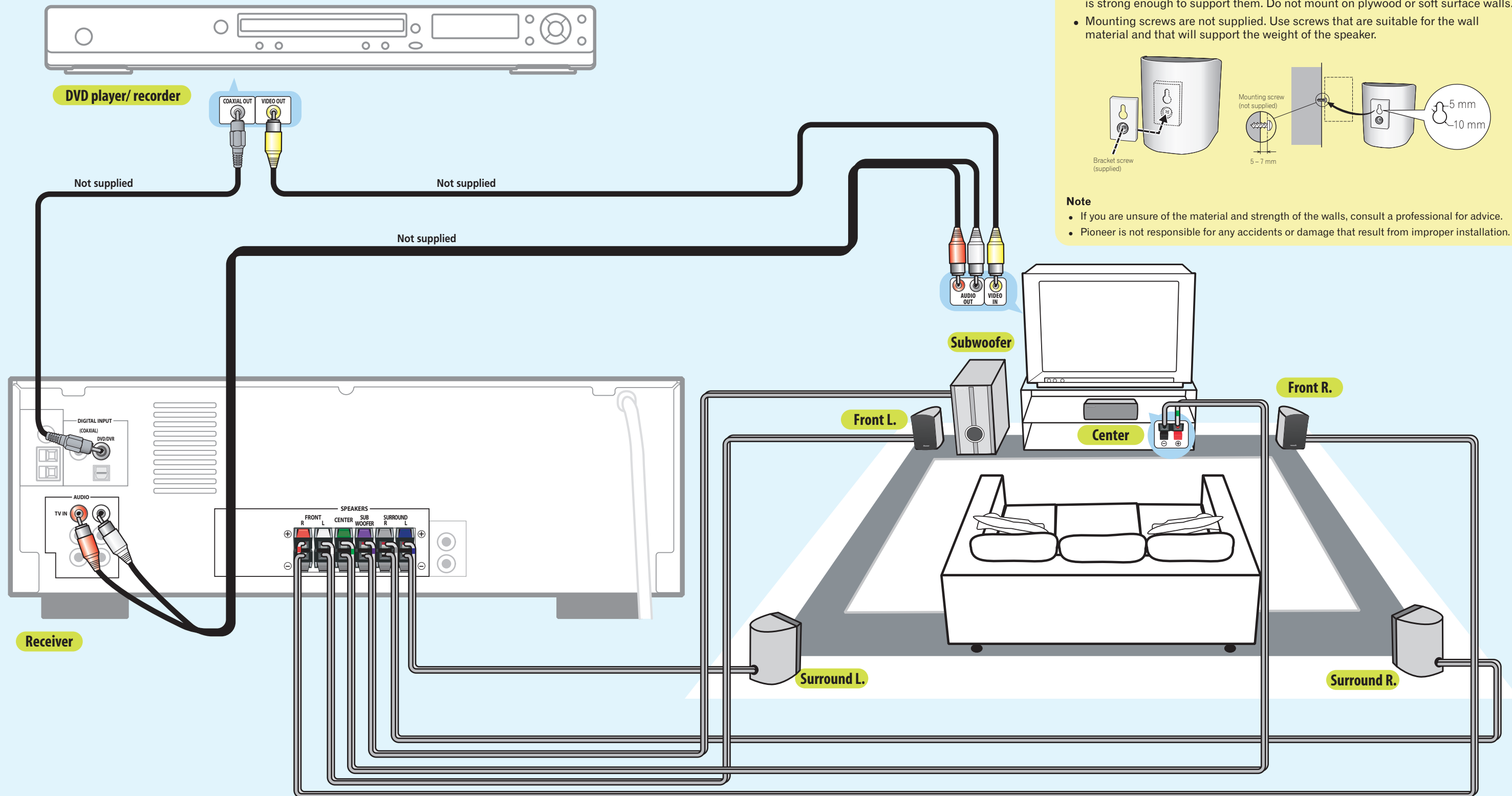
7 After switching on, make any necessary settings required by the DVD player/ recorder, then you're ready to start enjoying your home theater system.

Refer to the receiver's operating instructions for a detailed explanation of this system's surround sound features.



Setting Up Your HTP-2500/2600 Home Theater System At-a-Glance

Refer to the following diagram when making system connections for a full surround sound setup. Note that the TV, DVD player/ recorder and some accessories are not included. Refer to the reverse side of this sheet to check what's supplied with the HTP-2500/2600.



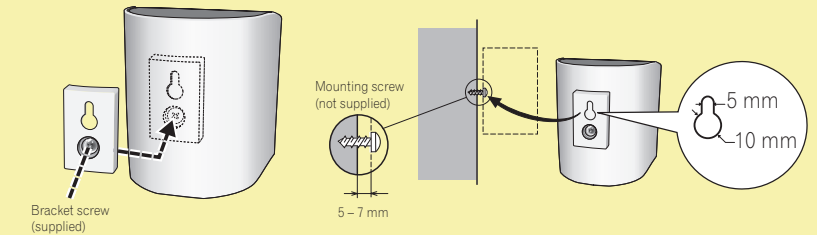
Wall-mounting the front and surround speaker system

Attaching the brackets

- Make sure to tighten the supplied screw as securely as possible when attaching the bracket to the back of the speaker.
- Please do not attach the brackets to the center speaker.

Before mounting

- Remember that the speaker system is heavy and that its weight could cause the wood screws to work loose, or the wall material to fail to support it, resulting in the speaker falling. Make sure that the wall on which you intend to mount the speakers is strong enough to support them. Do not mount on plywood or soft surface walls.
- Mounting screws are not supplied. Use screws that are suitable for the wall material and that will support the weight of the speaker.



Note

- If you are unsure of the material and strength of the walls, consult a professional for advice.
- Pioneer is not responsible for any accidents or damage that result from improper installation.

For detailed instructions, see the Operating Instructions supplied and / or contact one of our knowledgeable Pioneer Customer Service Representatives at 1 - (800) 421-1404.