



# **X7** *SPEED Game Mouse*

## **User's Manual**

Model(s): X-710 X-718

**[www.a4tech.com](http://www.a4tech.com)**

**THIS DEVICE COMPLIES WITH PART 15 OF THE FCC RULES. OPERATION IS SUBJECT TO THE FOLLOWING TWO CONDITIONS: (1) THIS DEVICE MAY NOT CAUSE HARMFUL INTERFERENCE AND (2) THIS DEVICE MUST ACCEPT ANY INTERFERENCE RECEIVED, INCLUDING INTERFERENCE THAT MAY CAUSE UNDESIRE OPERATION.**

Federal Communications Commission Requirements

The equipment has been tested and found to comply with the limits for Class B Digital Device, pursuant to part 15 of the FCC Rules. These limits are designed to provide reasonable protection against harmful interference in a residential installation. This equipment generates, uses and can radiate radio frequency energy and, if not installed and used in accordance with the instruction, may cause harmful interference to radio communication. However, there is no guarantee that interference will not occur in a particular installation. If this equipment does cause harmful interference to radio or television reception, which can be determined by turning the equipment off and on, the user is encouraged to try to correct the interference by one or more of the following measures:

- I Reorient or relocate the receiving antenna.
- I Increase the separation between the equipment and receiver.
- I Connect the equipment into an outlet on a circuit different from that to which the receiver is connected.
- I Consult the dealer or an experienced radio/TV technician for help.

**THE CHANGES OR MODIFICATIONS NOT EXPRESSLY APPROVED BY THE PARTY RESPONSIBLE FOR COMPLIANCE COULD VOID THE USER'S AUTHORITY TO OPERATE THE EQUIPMENT.**

This device complies with Part 15 of the FCC Rules. Operation is subject to the following two conditions:

- (1). this device may not cause harmful interference, and
- (2). this device must accept any interference received, including interference that may cause undesired operation.

## HOW TO CONNECT YOUR MOUSE

1. Locate an available USB mouse port on the back of your computer.
2. Insert the USB mouse connector into the USB port .

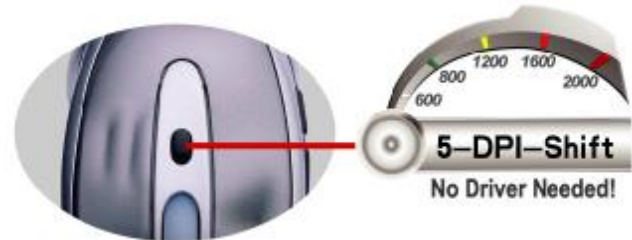


If you like to use the PS2 port (for the round PS/2 plug), you will need to plug the USB connector with a PS2 adapter.



## HOW TO CHANGE THE DPI SETTING OF SPEED GAME MOUSE

Click the button shown on the right figure to quickly shift from 600-800-1200-1600-2000 DPI as the scroll wheel changes color between shifts. You don't need any driver for this fabulous function!



**MODEL: X-710**

At Resolution:	Scrolling Wheel will change to:	Recommend for:	Suitable for Resolution of display (Recommend)
<b>400DPI</b>	Non	Slow-Speed and normal accuracy player	640×480
<b>600DPI</b>	Green	Medium-Speed and required average accuracy player	800×600
<b>800DPI</b>	Yellow	Fast Speed and required above average accuracy player	1024×768
<b>1000DPI</b>	Red	High-Speed and required above average accuracy player	1152×864

Click 6<sup>th</sup> key to quickly shift from 400, 600, 800 to 1000 DPI

**MODEL: X-718**

At Resolution:	Scrolling Wheel will change to:	Recommend for:	Suitable for Resolution of display (Recommend)
<b>600DPI</b>	Non	Slow-Speed and normal accuracy player	800×600
<b>800DPI</b>	Green	Medium-Speed and required average accuracy player	1024×768
<b>1200DPI</b>	Yellow	Fast Speed and required above average accuracy player	1152×864
<b>1600DPI</b>	Red	High-Speed and required pinpoint accuracy player	1280×960
<b>2000DPI</b>	Red & Yellow coruscating	Extra High-Speed and required pinpoint accuracy player	1280×1024

Click 6<sup>th</sup> key to quickly shift from 600, 800, 1200, 1600 to as high as 2000 DPI

## STEP ONE: HOW TO INSTALL SMART-X7 SOFTWARE

\*\*\*\*\* For Windows Me / 2000 / 2003 / XP

1. **MUST:** Please uninstall any previous mouse driver before installing the Smart-X7
2. **MUST:** Make sure you have completely finished setting up your mouse pad and mouse
3. Insert the included Compact Disc (CD) into your CD-ROM
4. Click "Install Driver". Select model: X-710/718 Optical Mouse
5. Click the button on the right to install driver
6. Follow the on screen instruction to complete your installation
7. Restart your computer after the driver has been installed


8. You will see a mouse icon " appear on the bottom right

of your task bar (near the clock area)



**Mouse Properties Window**



9. Double click on the mouse icon " will bring you the mouse property (Image - Top: Mouse Properties Window)
10. If the mouse image appears in the mouse properties menu looks exactly the same as the mouse on hand, then you have successfully installed the Smart-X7 driver

## STEP TWO: HOW TO PROGRAM YOUR MOUSE BUTTONS



MOUSE PROPERTY



Keyboard Property

I Open your Mouse Properties.

First Tab: Button

### Section I: Button Assignment

1. The mouse image that appears in the first section is a key to numbers listed to the right. For example, button #1 has been assigned as “Main Button” by default and it’s not programmable.
2. The rest of the buttons from #2 to #5 are programmable.

### Section II: Double-Click Speed

Adjust your double-click speed

### Section III: Button Configuration

If you select “Left-Handed”, your Main Button will be #2 button.


Before we go further to setting up your mouse buttons with game commands, we want to make sure your keyboard properties has the character repeat setting correct. Follow the steps below to get to Keyboard Properties:

- 1) Go to Control Panel
- 2) Click on Keyboard
- 3) For Repeat Delay: Most right (SHORT)
- 4) For Repeat Rate: Most right (FAST)
- 5) Apply >> OK

## STEP THREE: HOW TO SET X7-JUMP FUNCTION

### ( LEARN TO SIMULATE KEYBOARD'S COMMANDS AND PROGRAM XY SENSITIVITY INDEPENDENTLY)

The function **Smart-X7** not only provides program XY sensitivity independently , but also can be set in any of the buttons from # 2 to # 5 of simulation functions for the keyboard and half of the mouse button simulation functions for the keyboard.

1. Double click on the mouse icon “

Here you will see 2 Parts:

- I Part One is Change Mouse DPI.
- I Part Two is Keystrokes.

Let's enjoy all the innovative features of the mouse step by step as follows :



image A



image B

## **Section I: Change Mouse DPI : Set mouse XY axis sensitivity levels**

In order to Shift from pixel-precise targeting to fast-twitch maneuvers, without stopping the action. This avoids the error in operation for more efficiency. You can configure your mouse as synchronism or non-synchronism higher/lower with many parameters to control the X/Y dpi by yourself in this smart X7 Software ,

Model	At Resolution:	LED of Scrolling Wheel	Confirmable range of X/Y axes by software
<b>X-710</b>	<b>400DPI</b>	Non	200DPI-400DPI
	<b>600DPI</b>	Green	200DPI-600DPI
	<b>800DPI</b>	Yellow	200DPI-800DPI
	<b>1000DPI</b>	Red	200DPI-1000DPI
<b>X-718</b>	<b>600DPI</b>	Non	200DPI-600DPI
	<b>800DPI</b>	Green	200DPI-800DPI
	<b>1200DPI</b>	Yellow	200DPI-1200DPI
	<b>1600DPI</b>	Red	200DPI-1600DPI
	<b>2000DPI</b>	Red & Yellow coruscating	200DPI-2000DPI

If to cancel this mode, just click the 6<sup>th</sup> button ,it will automatically change to the next light status, if you need the dpi amount prior to usage ,just click “ Utilize mouse sensitivity configuration” mode and apply “√”.



## Section II: Keystrokes

To ADD keystrokes: Click on the button “New Keystroke” and you’ll see a “Keystroke” Window pops up (Image: left, bottom)

Here you will see 3 radio buttons:

- I Press and hold will input keystrokes consecutively
- I Press and hold will only input once the keystrokes
- I Press will input keystrokes consecutively, press again will release the keystrokes

If you select the 1<sup>st</sup> radio button, it means you would like to have the mouse completely simulate the keyboard’s keystroke – when you press and hold a key on the keyboard, it will input a character consecutively.

If you select the 2<sup>nd</sup> radio button, it means you would like to have the mouse partially simulate keyboard’s keystroke – when you press and hold a key on the keyboard, it will only input once unless you lift it and press it again.

If you choose the 3<sup>rd</sup> radio button, it means that you should have the mouse button automatically simulate the keyboard’s keystroke – when you press and hold a key on the keyboard , it will automatically keep inputting a character unless you type the mouse button assigned again.

***Let’s do some example together...***



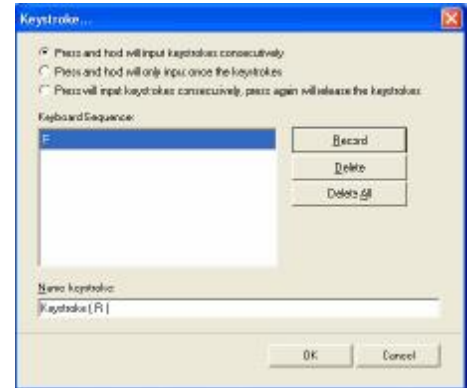
### Example 1: Select 1<sup>st</sup> Radio Button

1. Click on “Record” (Reference: Image A)
2. Press “R” on the Keyboard
3. Click “OK”
4. It will bring you back to previous page
5. Now click on “Keystroke (R)”, the one you just created
6. Select the Mouse Button (green icon) on the Mouse Image to your right to store the “Keystroke (R)”.
7. Green icon will turn red once it’s been selected. (Image B)
8. Click “Apply” >> “OK”

**We have stored it in Mouse Button # 2.**

**Let’s try it on regular word document or on game application (Counter Strikes).**

- I Try it on Word Document. Press and hold your mouse button #3. Did you see the character “RRRRRRR” inputted consecutively?
- I Try it on Game Application. Press and hold your mouse button #3. In Counter Strike, “Keystroke (R)” means to add bullets. Did you see it adding bullets? If yes, you have successfully created a command.



(Image A)



(Image B)

## Example 2: Select 1<sup>st</sup> Radio Button

1. Click on “Ctrl+A” (Reference: Image C)
2. Press “Ctrl+A” on the Keyboard
3. Click “OK”
4. It will bring you back to previous page
5. Now click on “Keystroke (Ctrl+A)”, the one you just created
6. Select the Mouse Button (green icon) on the Mouse Image to your right to store the “Keystroke (Ctrl+A)”.
7. Green icon will turn red once it’s been selected. (Image D)
8. Click “Apply” >> “OK”

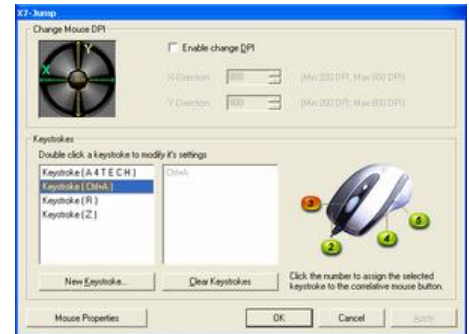
**We have stored it in Mouse Button # 3.**

**Let’s try it on regular word document**

- I Try it on Word Document. Press and hold your mouse button #3. Did you see the character “Ctrl+A Ctrl+A Ctrl+A Ctrl+A Ctrl+A” inputted consecutively?



(Image C)



(Image D)

### Example 3: Select 2<sup>nd</sup> Radio Button

1. Click on “Record” (Image E)
2. Press “A4TECH” on the Keyboard
3. Click “OK”
4. It will bring you back to previous page
5. Now click on “Keystroke(A4TECH)”, the one you just created
6. Select the Mouse Button (green icon) on the Mouse Image to your right to store the “Keystroke (A4TECH)”.
7. Green icon will turn red once it’s been selected. (Image F)
8. Click “Apply”, then “OK”

**We have stored it in Mouse Button # 4.**

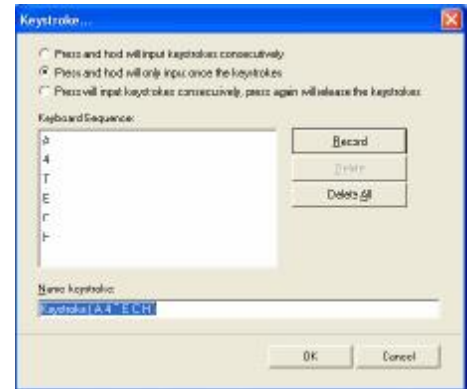
**Let’s try it on regular word document and on game application.**

**I Try it on Word Document.** Press and hold your mouse button #4.

Did you see the only character “A4TECH” even though you have press and hold? This is partially simulation. You may store your most frequently used word, for instance, your first name.

**I Try it on Game Application.** Press and hold your mouse button # 4.

In Counter Strike, “Keystroke (A4TECH)” means nothing. So when you try it in counter strike, it will do nothing.



(Image E)



(Image F)

#### Example 4: Select 3<sup>d</sup> Radio Button

1. Click on “Record”
2. Press “Z the Keyboard (Image G)
3. Click “Stop” to stop recording >> then click “OK”
4. It will bring you back to previous page (Image F)
5. Now click on “Keystroke(Z)”, the one you just created
6. Select the Mouse Button (green icon) on the Mouse Image to your right to store the “Keystroke(Z)”.
7. Green icon will turn red once it’s been selected. (Image H)
8. Click “OK”

**We have stored it in Mouse Button # 5.**

#### Let’s try it

- I Press and hold your mouse button # 5.  
**In BF2(A Stratagem Game)** , “Keystroke (Z)” means to hunker down  
Did you see yourself stayed hunker down unless you don’t re- press the button #5 to Stop its automatic typing “ ?
- I Try it on Word Document. Press and hold your mouse button #5. Did you see the character “ZZZZZZZZZ” inputted consecutively unless you don’t re- press the button #5 to Stop its automatic typing “ ?If yes, you



Image G

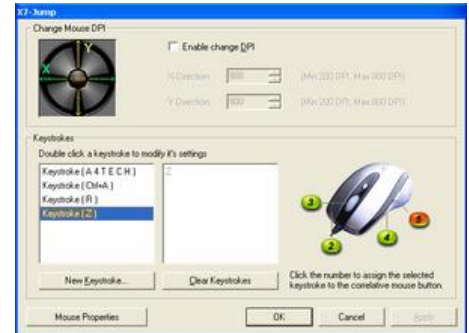


Image H

have successfully created a command.

### **TECH SUPPORT**

For tech support, please visit our website at [www.a4tech.com](http://www.a4tech.com) or email us at [support@a4tech.com](mailto:support@a4tech.com)

### **WARRANTY**

All A4 Tech products come with 2 years limited warranty.