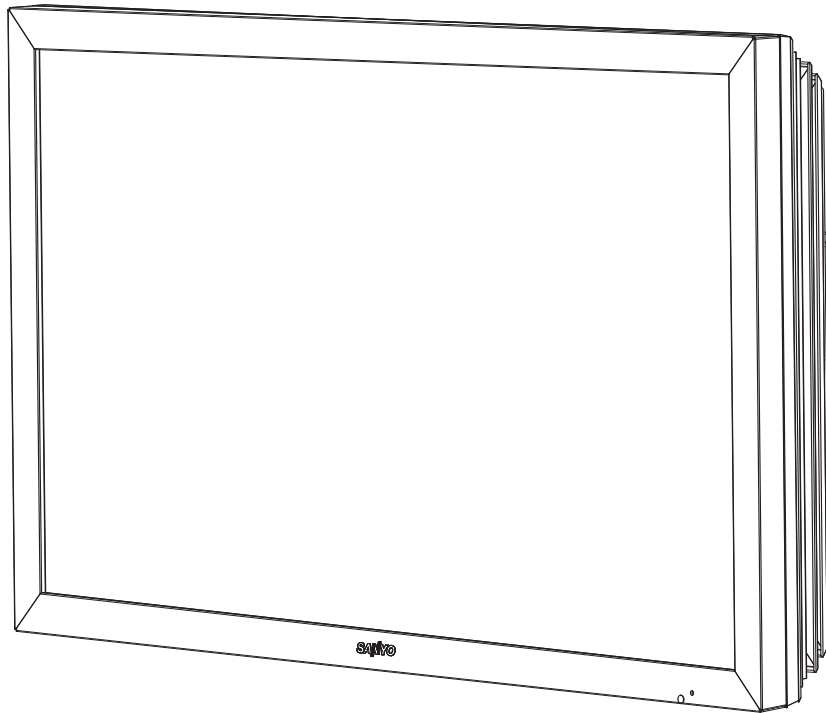


# SANYO

## Instruction Manual LCD Monitor

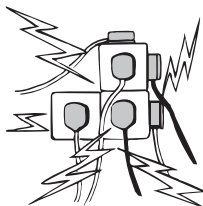
### CE52LH1R



Please read this instruction book before using your LCD monitor. We wish you many hours of pleasure from your new LCD monitor.

**CAUTION: Please read and retain for your safety.** This unit has been designed and manufactured to assure your personal safety, but improper use can result in potential electric shock or fire hazards. In order not to defeat the safeguards incorporated in this monitor observe the following basic rules for its installation, use and servicing.

### Installation and Use



**Do not** allow anything to rest on the power cord. **Do not** locate this LCD monitor where the cord will be damaged by people walking on it.

**Do not** overload wall outlets and extension cords as this can result in fire or electric shock.

A suitable socket outlet must be provided near to the monitor and shall be easily accessible.

**Do not** place this LCD monitor near any heat sources such as radiators, heaters, stoves and other heat-generating products (including amplifiers).

**Do not** place your LCD monitor on an unstable stand, shelf or table. Serious injury to an individual, and damage to the LCD monitor may result if it should fall. Your sales person can recommend an approved wall mounting kit. A special wall mounting kit is available for this model.

This LCD monitor should be operated only from the type of power source indicated on the monitor or as indicated in the Operating Instructions. If you are not sure of the type of power supply, consult your sales person or your local power company.

**For added protection** it is strongly recommended that this LCD monitor has its mains supplied via an approved earth fault protection device.

**WARNING:** To prevent injury the LCD monitor must be securely attached to the wall in accordance with the manufacturers installation instructions.

#### IMPORTANT:

##### **This product must be earthed**

This unit is not disconnected from the mains unless the mains lead is unplugged. The installer must make sure that the mains plug is easily accessible

**Do not** use immediately after moving the LCD monitor from a low temperature to a high temperature environment, as this causes condensation, which may result in fire, electric shock, or other hazards. Before cleaning, unplug the monitor from the wall socket.

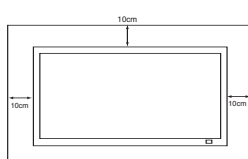
**Do not** mount near an open flame source. Open flames must never be used near this LCD monitor.

**This LCD monitor** should not be built in or enclosed in any way, heat build up will reduce the life of the monitor.

This LCD monitor should have a minimum distance of 5cm away from the wall and the monitor should have 10cm distance around the top and sides.

**Always** mount using recommended and substantial fixtures and fittings.

The rear finned section around the cabinet functions as a heat sink, removing heat away from the monitor. The external surface



of the cabinet (finned area) must not be covered or the airflow restricted in anyway by enclosing the LCD monitor.

**Do not** apply liquid cleaners or aerosol cleaners directly onto the LCD monitor. Use a damp cloth for cleaning.

## Servicing

Your monitor is fully transistorised and does not contain any user serviceable components.

You must not remove the rear cover of the monitor by yourself. The apparatus is working with high voltages and could damage objects or even endanger people. Leave all required repair and service jobs to an authorised service technician. He will exclusively use such spare parts that are complying with the same safety standards as applicable to the original parts. The use of original spare parts can prevent fire, shock and other hazards.

Unplug the LCD monitor from the wall outlet and refer servicing to qualified service personnel under the following conditions:

- If the power cord or plug is damaged.
- If liquid has been spilt in to the LCD monitor.
- If the LCD monitor has been dropped or the cabinet has been damaged.
- If the LCD monitor exhibits a distinct change in performance.
- If the LCD monitor does not operate normally by following the operating instructions.



Adjust only those controls that are covered in the operating instructions as improper adjustment of other controls may result in damage. This will often require extensive work by a qualified technician to restore the monitor to normal operation.

### Important recycling information.



Your SANYO product is designed and manufactured with high quality materials and components which can be recycled and reused.

This symbol means that electrical and electronic equipment, at their end-of-life, should be disposed of separately.

In the European Union there are separate collection systems for used electrical and electronic products.

**Please help us to conserve the environment we live in!**

**Note:** This symbol mark and recycle system are applied only to EU countries are not applied to other countries of the world.

## AC Power Cord Requirement

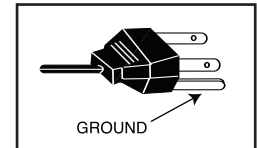
The AC Power Cord supplied with this LCD monitor meets the requirement for use in the country in which you purchase it.

### AC Power Cord for the United States and Canada:

AC Power Cord used in the United States and Canada is listed by the Underwriters Laboratories (UL) and certified by the Canadian Standard Association (CSA).

AC Power Cord has a grounding-type AC line plug. This is a safety feature to make sure that the plug will fit into the power outlet. Do not try to defeat this safety feature. Should you be unable to insert the plug into the outlet, contact your electrician.

**THE SOCKET-OUTLET SHOULD BE INSTALLED NEAR THE EQUIPMENT AND EASILY ACCESSIBLE**



## End-User License

The product (meaning the equipment or appliance to which this documentation relates) incorporates Software (the software applications, utilities and modules embedded within the Product) which is owned by Sanyo or its licensors. Before using the product, please read the End-User License Conditions detailed below. If you do not agree to the terms and conditions of the End-User License, Please do not proceed to use the Product- repack the Product unused and return it to your supplier together with proof of purchase for a full refund. By using the product, you agree to be bound by the terms and conditions of the End-User License.

### License Grant, Conditions and restrictions

1. Sanyo grants you a non-exclusive, world-wide (subject to export controls), non-transferable (except as permitted by 2 below), royalty-free license to use the Software upon and with the Product.
2. You may not transfer any of your license rights in the Software without the prior written consent of SANYO and if consent is provided then the Software shall only be transferred in conjunction with the transfer of the Product AND provided that the transferee has read and agreed to accept the terms and conditions of this license.
3. You must ensure that the copyright, trademark and other protective notices contained in the Software are maintained and not altered or removed.
4. The Software provided hereunder is copyrighted and licensed (not sold). SANYO especially does not transfer title or and ownership rights in the Software to you. The Software provided hereunder may contain or be derived from portions of materials provided to SANYO under license by a third party supplier.
5. Except as expressly permitted by statute **you may not;**
  - use the Software in conjunction with any other computer hardware other than the product;
  - copy all or part of the Software;
  - incorporate all (or any of) the Software into other programs developed by (or on behalf of) you and/or used by you;

- reverse-engineer, decompile or disassemble the Software;
- make the Software (or any part of it) available, or permit its redistribution, for use with any computer hardware other than the Product; or rent, lease, gift, loan, sell, distribute or transfer possession of the whole or any part of the Software.

### Termination

This license is effective until terminated. This license will terminate automatically without notice if you fail to comply with any of its provisions.

### Disclaimer

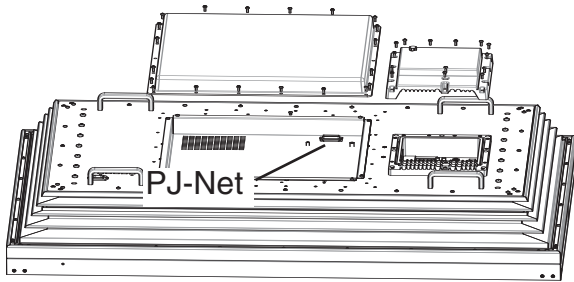
1. The Software is(to the extent permitted by law) supplied 'as is' and SANYO and its suppliers expressly exclude all warranties, express or implied, including (but not limited to) warranties of satisfactory quality, fitness for purpose and non-infringement (save to the extent that the same are not capable of exclusion at law).
2. In no circumstances will SANYO be liable for any direct, indirect, consequential, or incidental damage (including loss of profits, business interruption, loss of data or the cost of procurement of substitute goods, technology or services) arising out of the use or the inability to use the Software (save to the extent that such liability is not capable of exclusion at law).

### General

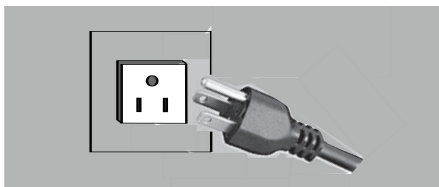
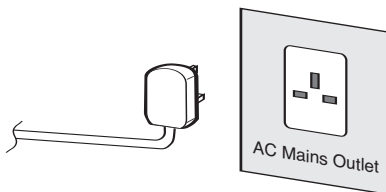
1. This End-User License will be governed by laws of England and the User may only bring claims in the English Courts and SANYO shall be entitled to bring a claim in the courts of any jurisdiction.
2. This End-User License is governed by the laws of the State of California. The End-User and Sanyo agree that any action to enforce or interpret the terms of this End-User License shall be brought only in the appropriate state or federal court located in Los Angeles County, California. The End-User and Sanyo hereby submit to the exclusive jurisdiction and venue of such court.
3. The above terms and conditions supersede any prior agreement, oral or written, between you and SANYO relating to the Software.

## Step : 1 Mains Connection

- Connect the display unit to VGA, BNC and Scart connector as required.



1. Connect the in-line power connector to the connector attached to the LCD monitor as shown above.
2. Connect the power cord of the LCD monitor to a wall outlet.
  - ✎ As this product does not have a mains On/Off switch, please ensure your mains plug is easily accessible.
  - ✎ The LCD monitor is prepared for a mains voltage AC120V, 50Hz/60Hz. To completely switch off the mains, or when the display unit is not to be used for an extended period of time, it is advisable to disconnect the power cord from the power outlet.



- ✎ Please use the correct mains lead supplied with the set for your area.
3. **Warning:** To prevent injury, the unit **must** be securely attached to the wall in accordance with the installation instructions.



**WARNING!** High voltages are used in the operation of this set. Refer service to qualified service personnel.

## Step : 2 Connections

- INPUT selection  
To switch between AV1, AV2, AV3, PC or DVI press the **INPUT** button on your remote control repeatedly.

### 1. AV1

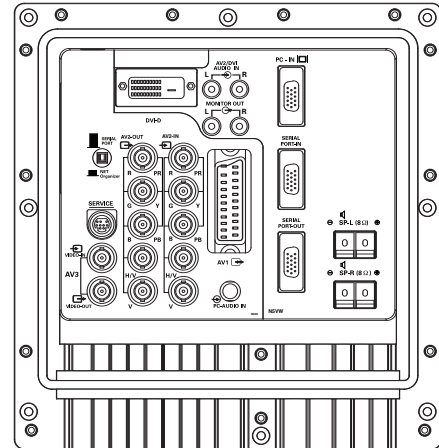
SCART connection

### 2. RGB

TTL input (5V RGB signals) into SCART terminal

### 3. Y,Pb,Pr/ RGBHV connection (AV2)

This LCD monitor has a choice of Y, Pb, Pr or RGB H/V connections. You can connect your DVD player to the Y, Pb, Pr terminals instead of using a scart lead. This can support high definition in analogue component form. RGB H/V can be used as a PC input via the BNC terminals. Both options support a large range of resolutions (page 14).



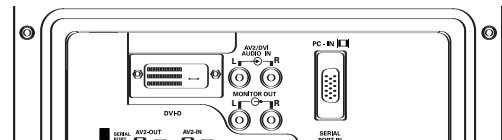
### 4. AV3

Composite (CVBS) signal input

AV3 OUT is to output the composite video signal from the VIDEO IN so that you can connect monitors with the use of a loop through function.

### 5. DVI-D (Digital Video Interface)

This monitor has a DVI connector. This is located at the back of the monitor next to the phono sockets. This input will support a large range of resolutions as shown on page 14. See page 7 for details of menu operation.



### 6. PC connection

This LCD monitor has a PC connector (PC-IN D-SUB). You can connect a PC to the LCD monitor and use it as a monitor display (see page 9). This input will support a large range of resolutions (see page 14). Audio can be connected via the 3.5mm PC audio in socket.

7. **PJ Net IN:** Has the ability for PJ-NET to be connected to control the monitor using a network.

**Input**

To switch input source from AV1, AV2, AV3, PC or DVI mode.

**Wide**

To select the screen mode **Full, Zoom, Zoom [Caption-IN], Normal, Natural wide.**  
Refer to page 11.

**Menu**

To enter and exit the main menu, and sub menu.

**Level Up/Down**

To enter sub menus.

**F/OK**

To confirm the initial setting in the menu.

**Picture mode selector**

Press the  $\rightarrow$  <math>\leftarrow button repeatedly to select the following picture mode.

**Personal**-Personal preference mode.

**Standard**-Normal viewing mode.

**Dynamic**-Suitable for brightly lit rooms.

**Soft**-Inhibit strong contrast and color, it is beneficial for eye protection.

**Eco**-Suitable for dimly lit rooms and gives a cinema-like effect.

**Freeze**

To switch picture still on or off.

**Green**

Press this button for more than 4 seconds and release, installation mode will appear.

**Standby**

To switch the monitor on and off. Also see page 7.

**Recall**

To display input selection information and the Time set.  
You can also select colour systems in AV3 mode as follows:  
AUTO-> PAL -> SECAM -> NTSC -> NTSC4.43  
It can also be automatically adjusted in PC mode by pressing this button for twice .

**Back**

Used to return to the previous menu.

**Up and Down**

To select the next or previous item.

**Bass Expander**

To get an emphasised bass sound ON or OFF.

**TXT/TV**

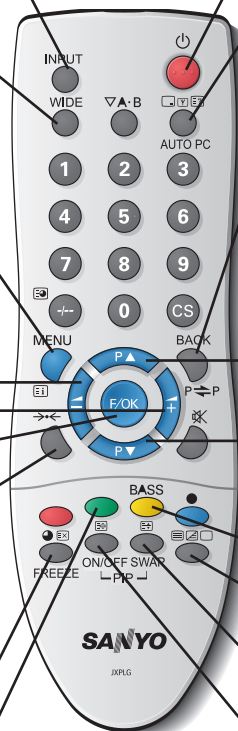
To select Teletext mode.

**Main/Sub Picture Swap**

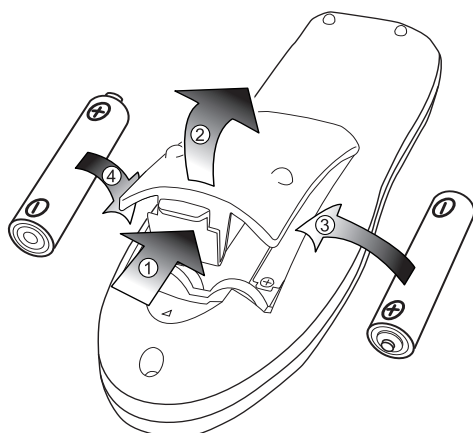
To swap Main and Sub picture.

**ON/OFF**

To switch OFF ->PIP(1) ->PIP(2) ->POP mode in turn.  
Refer to page 12.

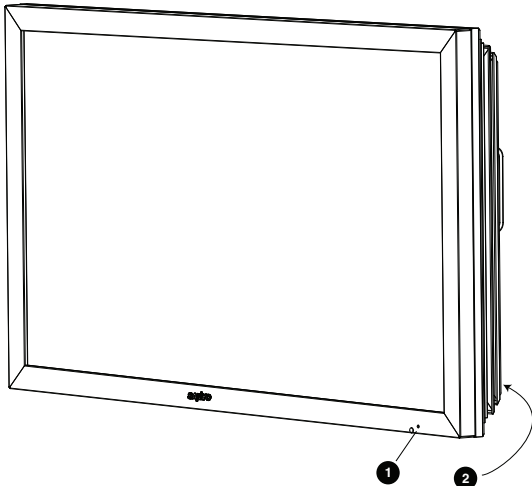


### Remote control battery installation



Install two "AA" 1.5 volt batteries so that the "+" and "-" marks on the batteries match the "+" and "-" marks inside the unit into the remote control handset.

## Controls and Menus



1. The LCD display has a Standby light to show there is power.

### Switching into/from standby mode

The Standby mode is used for switching the LCD monitor off for short periods of time. In standby mode the monitor is switched off but is still receiving mains power.

- To turn the monitor into standby mode, press the **⏻ button**.  
*The blue power indicator illuminates more brightly.*
- To turn the monitor ON from standby mode, press the **⏻ button** again.



If you find the power indicator flashing, disconnect power cord from the power outlet and contact our Service desk.



This warning is a sign to let you know that the power protection function of this TV set is now operating.

## 2. Control buttons (bottom corner of back cover)

Menu button: Used to display or cancel main menu.



Input/ **v** button: Switch between AV1, AV2, AV3, PC or DVI mode.

**←** or **→** buttons: provide up and down adjustments.

**⏻** button: To switch to standby mode (to switch off completely disconnect the monitor from the power supply).

## Menu Operation

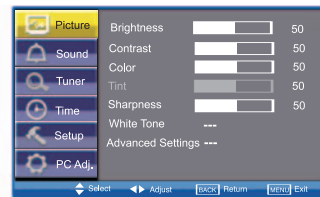
Many of your monitors functions are controlled through the menu function, using the remote control.

MENU	
Picture	Brightness Contrast Color Tint (only if NTSC equipment is detected) Sharpness White Tone — White Tone / R / G / B Advanced Setting — DCDI / ACC/ACM / CCS / DNR / MPEG NR / Film Mode
Sound	Treble Bass Balance Bass Expander — On / Off
Timer	Current Time Off Time On Time On Position — AV1 / AV2 / AV3 / PC / DVI
Setup	Menu Setup — Language / H/V-Position / Duration / Transparency PIP / POP Setup — PIP/POP Mode / Main/Sub Source / PIP Position Initial Settings Text Language — Western / Eastern / Russian / Arabic / Farsi Tile Mode — Tile Mode Active / H/V_Sets / H/V Location / Bezel H/V Adjustment AV2 Setting — RGBHV / YPbPr
PC Adj.	Auto Adjust H-Position V-Position Clock Phase

During menu operation the bottom of the on screen display will show which controls can be used for menu navigation.

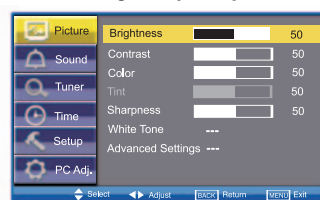
Press the **MENU** button to **enter** the main menu. Whenever main menu is accessed initially, **PICTURE** will be the default selection.

A sub menu is selected using the **P▲** or **P▼** button and pressing the **▲+** or **▲-** button when the required sub menu is highlighted. When you have finished you can press the **BACK** button to return to the previous menu, press the **MENU** button to exit the menu operation.



## Picture menu

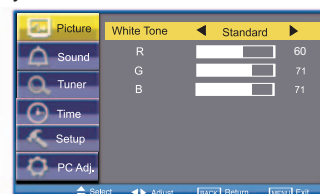
1. Press the **MENU** button. **PICTURE** will be the default selection. Press the **▲+** or **▲-** button to enter. Set the picture settings for your "personal" preference.



2. Use the **P▲** or **P▼** button to select eg. Brightness and the **▲+** or **▲-** button to adjust levels.

### ■ White Tone

May be used to adjust the color tone of the picture. Use the **P▲** or **P▼** button to select **White Tone** and press the **▲+** or **▲-** button to enter the sub menu. You can select **Personal**, **Cool**, **Standard** or **Warm** settings by using the **▲+** or **▲-** button. To adjust the color tone of the picture by using the **P▲** or **P▼** button to select **Red(R)**, **Green(G)** or **Blue(B)** and the **▲+** or **▲-** button to adjust levels. These settings will be stored in personal mode automatically.

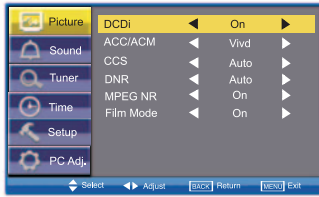




## Picture menu

### Advanced settings

Use the **P▲** or **P▼** button to select **Advanced settings** and press the **▲+** or **▲-** button to enter the sub menu as follows.



**DCDi**(Directional Correlational Deinterlacing) is used to process moving angled edge in deinterlacing to get the smoothest and most natural image. Press the **▲+** or **▲-** button on the remote control to select **On** or **Off**.

**ACC/ACM**(ACC: Adaptive Contrast and Color; ACM-II: Active Color Management-II) is used to select adaptive Brightness, Contrast and tone control. Press the **▲+** or **▲-** button on the remote control to select suitable mode either **Vivid**, **Cinema**, **Sport** or **Off**.

**CCS**(Cross Color Separation) is used to remove residual chroma information from luminance signal which is the result of imperfect decoding of composite video. Press the **▲+** or **▲-** button on the remote control to select either **Auto**, **Standard** or **Off**.

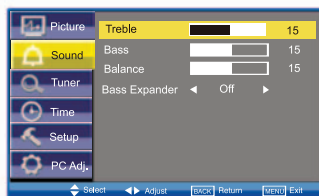
**DNR**(Digital Noise Reduction) is available for noise reduction. Press the **▲+** or **▲-** button on the remote control to select either **Auto**, **Low**, **Mid**, **High** or **Off**.

**MPEG NR**(MPEG Noise Reduction): Removes unwanted ringing and block noise from images that have undergone MPEG or JPEG compression and decompression. Press the **▲+** or **▲-** button on the remote control to select **On** or **Off**.

**Film Mode**(Inverse 3:2 pulldown): Film vs.Video-Detect film. Performed on material which underwent technologic conversion to video. Press the **▲+** or **▲-** button on the remote control to select **On** or **Off**.

## Sound menu

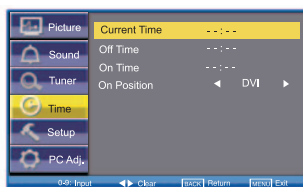
Press the **MENU** button and select **Sound** using the **P▲** or **P▼** buttons, press the **▲+** or **▲-** button to enter.



Select and adjust to obtain the best sound settings for your environment using the **P▲** or **P▼** button to select **Treble**, **Bass** or **Balance** and the **▲+** or **▲-** button to adjust levels. **Bass Expander** can also be selected using the **P▲** or **P▼** button and pressing the **▲+** or **▲-** button to select **On** or **Off**. These settings automatically store when you exit the menu. Press the **BACK** button to return to the previous menu. Press the **MENU** button to exit menu operation.

## Time menu

Press the **MENU** button and select **Time** using the **P▲** or **P▼** buttons, press the **▲+** or **▲-** button to enter. Press the **BACK** button to return to the previous menu. Press the **MENU** button to exit menu operation.



☞ If the monitor is switched off by the standby switch **⏻** on the back of the LCD monitor the time settings will be cancelled.

### Current Time

Use **NUMERIC** buttons [0-9] to set **Current time**. (00:00~23:59)

To reset the time using the **▲+** or **▲-** button.

☞ Other items in Time Menu cannot be selected until Current Time has been set.

### Off Time

The Off time will switch the monitor into the standby mode when the selected time has elapsed.

Use **NUMERIC** buttons [0-9] to set **Off Time**. (00:00~23:59)

To reset the time using the **▲+** or **▲-** button.

☞ If the monitor is switched off by the **standby button** **⏻**, the timer settings will be cancelled.

☞ About one minute before the set time is reached, the status of the monitor will display on the screen.

### On Time

Once On Time has been set, you will not miss your favourite tv programme.

Use **NUMERIC** buttons [0-9] to set **On Time**. (00:00~23:59)

To reset the time using the **▲+** or **▲-** button.

☞ Once On Time has been set, when the set time is reached, the monitor will leave the stand-by status and enter to the source automatically.

☞ After On Time has been set, you can go on watching other programs. When the set time is reached, the monitor will display "Note: Time is up!" and then will automatically switch to the preset program.

### On Position

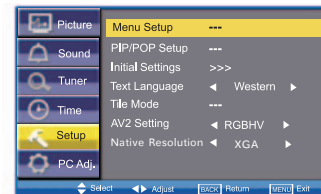
☞ On Position can only be selected when On Time has been set.

Once On Position has been set, when the set time is reached, the monitor will enter to the preset source automatically.

Use the **▲+** or **▲-** button to select the preset source **AV1**, **AV2**, **AV3**, **PC** or **DV1**.

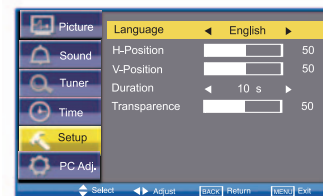
## Setup menu

Press the **MENU** button and select **Setup** using the **P▲** or **P▼** buttons, press the **▲+** or **▲-** button to enter. Press the **BACK** button to return to the previous menu. Press the **MENU** button to exit menu operation.



### Menu Setup

Whenever Setup menu is accessed initially, Menu Setup will be the default selection. Press the **▲+** or **▲-** button to enter the sub menu.



Language is preset to **English**.

**H-Position** changes the OSD position horizontally by using the **▲+** or **▲-** button.

**V-Position** changes the OSD position vertically by using the **▲+** or **▲-** button.

**Duration** is used to set the display time of the MENU by using the **▲+** or **▲-** button.(5~120 seconds)

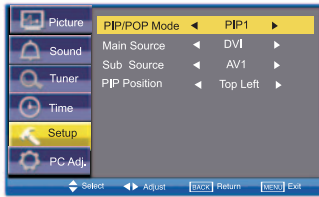
**Transparence** is used to adjust transparence of menu. Use the **▲+** or **▲-** button to adjust levels.



## Setup menu

### ■ PIP/POP Setup

Use the **P▲** or **P▼** button to select **PIP/POP Setup** and press the **▲+** or **▲-** button to enter the sub menu.



**PIP/POP Mode:** Using the **▲+** or **▲-** button select the most suitable mode **PIP1**, **PIP2**, **POP** or **Off**. (Please refer to page 12.)  
 ⚠ *When Mode is set to Off, Sub Source and PIP Position will not work.*

**Main Source** is used to select input source (AV1, AV2, AV3, PC or DVI) for main picture by using the **▲+** or **▲-** button.

**Sub Source** is used to select input source (AV1, AV2, AV3, PC or DVI) for sub picture by using the **▲+** or **▲-** button.

⚠ For a combination of main picture and sub picture: only DVI input can assemble with other input source. For example, if main source is selected as AV1 input, then the sub source must be DVI input.

**PIP Position:** Using the **▲+** or **▲-** button it can be selected **Top Left**, **Top Right**, **Bottom Right** or **Bottom Left**.

### ■ Initial Settings

This function returns all setting values except for Dealer Mode and channel messages by using this function.

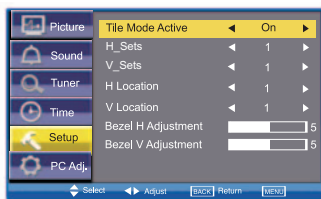
### ■ Text Language

Use the **P▲** or **P▼** button to select **Text Language** and press the **▲+** or **▲-** button to select Western, Eastern, Russian, Arabic or Farsi.

### ■ Tile Mode

This function allows you to split an image to suit your monitor grid format to create a video wall.

Use the **P▲** or **P▼** button to select **Tile Mode** and press the **▲+** or **▲-** button to enter the sub menu as follows.



**Tile Mode Active** can be set **On** or **Off** using the **▲+** or **▲-** button.

**H\_Sets** is used to divide the horizontal picture into more than one part, but the most is 5 parts.

**V\_Sets** is used to divide the vertical picture into more than one part, and the most is also 5 parts. Using the **▲+** or **▲-** button to set.

**H Location** is used to select one part of the horizontal picture to display on the current LCD Monitor using the **▲+** or **▲-** button.

**H Location** is used to select one part of the vertical picture to display on the current LCD Monitor using the **▲+** or **▲-** button.

**Bezel H Adjustment** is used to bezel horizontal adjustment to smooth image using the **▲+** or **▲-** button. (0~10)

**Bezel V Adjustment** is used to bezel vertical adjustment to smooth image using the **▲+** or **▲-** button. (0~10)

### ■ AV2 Setting

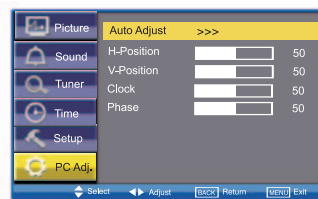
Use the **P▲** or **P▼** button to select **AV2 Setting** and press the **▲+** or **▲-** button to select **YPbPr** or **RGBHV**. Connect your PC to either PC-IN or RGBHV on the rear of the set. Once connected select PC mode or AV2 (RGBHV, see page 5 for AV2 input settings) via the **INPUT** button on your remote control. The set will become a monitor for the PC.

### ■ Native Resolution

Use the **P▲** or **P▼** button to select **Native Resolution** and press the **▲+** or **▲-** button to select **XGA** or **WXGA 1366 x 768**.

## PC Adj. menu

Press the **MENU** button and select **PC Adj.** using the **P▲** or **P▼** buttons, press the **▲+** or **▲-** button to enter. Press the **BACK** button to return to the previous menu. Press the **MENU** button to exit menu operation.



**Auto Adjust** is used to automatically detect incoming signal, and adjust itself to optimize its performance by using the **▲+** or **▲-** button. If the image is not displayed properly, a manual adjustment is required (Refer to following adjustments).

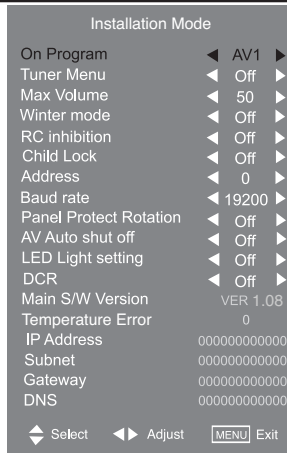
**H-Position** is used to move the horizontal picture position by using the **▲+** or **▲-** button.

**V-Position** is used to move the vertical picture position by using the **▲+** or **▲-** button.

**Clock** is used to eliminate flicker from the image by using the **▲+** or **▲-** button.

**Phase** is used to eliminate disorder from the image by using the **▲+** or **▲-** button.

## Installation Mode



This LCD monitor allows you to set up the following:

### SETTING PROCEDURE

1. Press and hold the **GREEN** button on the remote control for 4 seconds. (Installation Mode will appear)
2. Use the **P▲** or **P▼** button to highlight **each option**, use the **▲+** or **▲-** button to adjust each option. Press the **MENU** button to exit the mode.

#### ■ On Program

Select ON program using the **P▲** or **P▼** button, select the start up position using the **▲+** or **▲-** buttons.  
(Off/ AV1/ AV2/ AV3/ PC/ DVI)

#### ■ Max Volume

Select Max volume using the **P▲** or **P▼** button, use the **▲+** or **▲-** buttons to set the maximum volume required.

#### ■ Winter mode

This Function can be activated when the LCD monitor is used during cold temperature conditions, approximately 38°F/ 4°C or below to maintain picture performance.

Using the **P▲** or **P▼** button select winter mode, once highlighted you can select ON or OFF by pressing the **▲+** or **▲-** button.  
**IMPORTANT:** The AC cord should not be disconnected during the operation of Winter mode function.

When in winter mode, power consumption is higher than normal standby consumption. This is entirely due to the operation of heating circuitry. We strongly recommend to turn off Winter mode when the ambient temperature is above 38°F/ 4°C.

#### ■ RC inhibition

You can prevent unwanted remote control operation by selecting RC Inhibition.

Select using the **P▲** or **P▼** button. Press the **▲+** or **▲-** button to select On or Off.

To re-instate RC operation press and hold the green button on the remote control and select RC inhibition OFF.

#### ■ Child Lock

You can prevent unwanted operation of the LCD monitor via the buttons on the rear of the monitor.

Select using the **P▲** or **P▼** button. Press the **▲+** button to select On or OFF.

#### ■ Address

Set the address for the LCD monitor.

#### ■ Baud rate

Select Baud rate using the **P▲** or **P▼** button. To set the transmission speed for PJ-NET communication of 19200 or 9600 Baud rate by pressing the **▲+** or **▲-** button.

#### ■ Panel Protect Rotation

Select Panel Protect Rotation using the **P▲** or **P▼** button, once highlighted you can select ON or OFF by pressing the **▲+** or **▲-** button.

#### ■ AV Auto shut off

Select AV Auto Shut Off using the **P▲** or **P▼** button, once highlighted you can select On or Off by pressing the **▲+** or **▲-** button.

#### ■ LED Light setting

Select LED Light setting using the **P▲** or **P▼** button, once highlighted you can select On or Off by pressing the **▲+** or **▲-** button.

#### ■ DCR

Select DCR using the **P▲** or **P▼** button, once highlighted you can select On or Off by pressing the **▲+** or **▲-** button.

#### ■ Main S/W Version

To record the version for Main Software.

#### ■ Temperature Error

This function can record times for abnormal temperature.

#### ■ IP Address / Subnet / Gateway / DNS

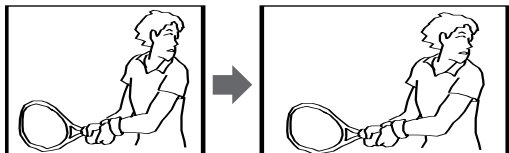
These 4 items display the PJ-Net information. If no PJ-NET had been connected, all the items would be displayed "000000000000".

☞ Disconnecting the mains supply before exiting Installation Mode will cancel the following features On program, RC inhibition, Address and Baud Rate.

## Selecting of picture size

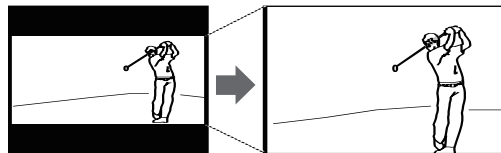
Select screen size among "Full", "Zoom", "Zoom(Caption-IN)", "Normal" and "Natural wide" by pressing WIDE button on the Remote Control.

### ■ Full



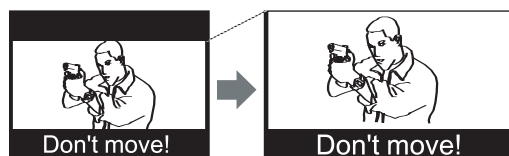
Provides image to fit width of screen by expanding image width uniformly. This function can be used for enjoying a squeezed video signal with wide video aspect ratio of 16 : 9 screen. When your video equipment (such as DVD) has 16 : 9 output mode, select 16 : 9 and select "Full" to provide better quality.

### ■ Zoom



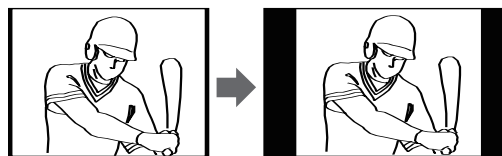
Provides image to fit screen size (16 : 9 aspect ratio) by expanding image width and height uniformly. This function can be used for enjoying a letter box mode picture (4 : 3 aspect picture with black bar on top and bottom edges) with wide video aspect of 16 : 9 screen.

### ■ Zoom (Caption-IN)



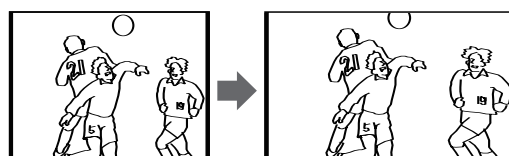
Provides the image that is expanded as "Zoom" mode and moved up to show more image to include captions. This function can be used for enjoying a letter box picture with captions.

### ■ Normal



Provides real 4 : 3 image on 16 : 9 screen.

### ■ Natural wide



Provides image to fit width of screen by expanding up/down/left/right of image. This function is suitable to enjoy a normal video signal (4 : 3 aspect ratio) with wide video aspect ratio of 16 : 9 screen.

## PIP/POP Operation

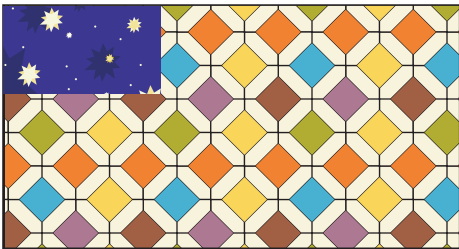
Using this function, you can enjoy a **DVI** or **Network** program and an image (**AV1**, **AV2**, **AV3** or **PC** input) at the same time.

Press the **ON/OFF** button on the Remote Control repeatedly to select **PIP1**, **PIP2**, **POP** or **OFF** mode.

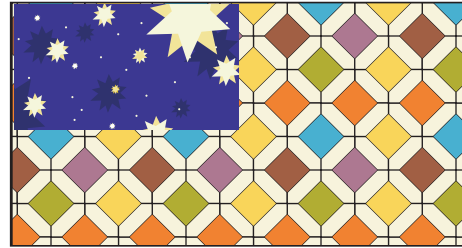
During the PIP/POP mode, press the **Main/Sub Picture Swap** button will switch the location for main and sub picture.

- ☞ Only the sound on the main picture is heard from the monitor speaker. The sound on the sub-picture cannot be heard.
- ☞ The details for PIP/POP operation (eg, location for sub picture or input source for any picture, etc.), please refer to page 9.

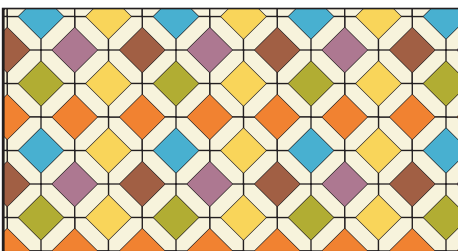
### ■ PIP1 mode



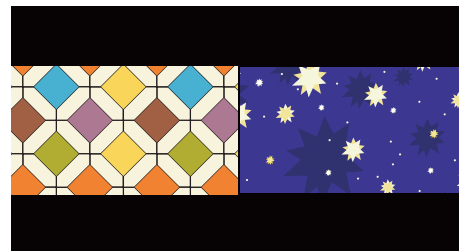
### ■ PIP2 mode



### ■ OFF mode



### ■ POP mode



The left picture is main picture, the right picture is sub picture.

## Specification

### Common specification

Power source	120V 50Hz / 60Hz
Colour system	PAL / NTSC / NTSC4.43/ SECAM

### AV terminal

AV1: Scart CENELEC Standard  
 Input: Composite video, RGB (5V RGB with 5V sync to pin 14) and audio-L/R  
 Output: composite video and audio L/R

AV2: BNC  
 Input: RGB, H and V / Y, Pb, Pr and audio L/R  
 Output: RGB, H and V / Y, Pb, Pr

AV3: BNC  
 Input: Composite video  
 Output : Composite video

DVI	Input :	DVI-D GROUP Standard
PC	Input:	Mini D-SUB 15 PIN and Audio 3.5mm Jack

Net Organiser: POA-PN03C (optional)  
 When ordering these products, give the Name and Type No. to the sales dealer.

Contrast Ratio	1500:1
Screen(inches/ cm) (viewing measured diagonally)	52"/132cm
Display Native Resolution	1920X1080
Viewing angles	H:89°, V:89°
Dimensions (WxHxD)	1304 x 800 x 234mm
Weight (kg)	68

## Helpful hints

### ■ NO PICTURE

- Check if monitor is plugged in.
- Check monitor is not in standby mode

### ■ POOR PICTURE

- Adjust BRIGHTNESS/ CONTRAST LEVELS (too low).

### ■ NO COLOUR, PICTURE OK

- Adjust COLOUR control.
- Check lead connections
- Does the signal input have colour

### ■ REMOTE CONTROL DOES NOT WORK

- Check batteries are inserted correctly
- Check condition of batteries
- Check to see if remote control inhibit is set ON

## PC signal support timing

Resolution	Horizontal Frequency (kHz)	Vertical Frequency (Hz)	Remark
720_400	31.47	70.09	DOS(VGA)
640_480	31.50	60.00	DOS(VGA VESA 60Hz)
640_480	37.50	75.00	VGA VESA 75Hz
640_480	37.86	72.81	VGA VESA 70Hz
640_480	43.27	85.00	VGA
640_480	35.00	67.00	Mac.
640_480	34.97	66.60	Mac LC 13"
800_600	35.16	56.25	SVGA VESA 56Hz
800_600	37.90	60.32	SVGA VESA 60Hz
800_600	46.90	75.00	SVGA VESA 75Hz
800_600	34.50	55.38	SVGA
800_600	38.00	60.51	SVGA
800_600	53.67	85.06	SVGA
832_624	49.00	74.00	Mac.
1024_768	48.40	60.00	XGA VESA 60Hz
1024_768	56.50	70.00	XGA VESA 70Hz
1024_768	60.00	75.00	XGA VESA 75Hz
1024_768	48.50	60.02	XGA
1024_768	60.31	74.92	XGA
1024_768	61.00	75.70	XGA
1024_768	68.68	85.00	XGA
1024_768	60.24	75.08	MAC_Normal 19"
1280_960	60.00	60.00	SXGA VESA 60Hz
1280_1024	79.976	75.025	SXGA VESA 75Hz
1280_1024	63.370	60.01	SXGA
1280_1024	63.34	59.98	SXGA
1280_1024	63.74	60.01	SXGA
1280_1024	63.79	60.18	SXGA
1280_1024	63.90	60.00	SXGA
1280_1024	81.13	76.107	SXGA
1152_900	61.20	65.20	SXGA
1152_900	61.85	66.00	SXGA
1152_900	71.40	75.60	SXGA
1400_1050	65.35	60.12	SXGA
1400_1050	65.12	59.90	SXGA
1152_870	68.68	75.06	MAC_Normal 21"
1280_1024	80.00	75.00	Mac.
1600_1200	75.00	60.00	UXGA VESA 60Hz
1366_768	48.36	60.00	WXGA
1360_768	47.70	60.00	WXGA

The monitor can be automatically adjust in pc mode when received standard VESA signal.  
It will be displayed XGA when the monitor is received XGA or WXGA signal.

## Component signal support timing

Resolution	Horizontal frequency (KHz)	Vertical frequency (Hz)	Remark
720x480	15.735	60	SDTV 480i
720x576	15.625	50	SDTV 576i
720x480	31.25	60	SDTV 480p
720x576	31.25	50	SDTV 576p
1280x720	45.00	60	HDTV 720p
1280x720	37.50	50	HDTV 720p
1920x1080	33.75	60	HDTV 1080i
1920x1080	28.13	50	HDTV 1080i
1920x1080	67.5	60	HDTV 1080P
1920x1080	56.25	50	HDTV 1080P

## DVI-D SIGNAL SUPPORT TIMING

Resolution	Horizontal Frequency (kHz)	Vertical Frequency (Hz)	Remark
640_480	31.43	59.88	VGA VESA 60Hz
640_480	37.86	72.81	VGA VESA 72Hz
640_480	37.5	75	VGA VESA 75Hz
640_480	34.97	66.6	MAC LC 13"
640_480	35	66.67	MAC_ NORMAL 13"
800_600	35.16	56.25	SVGA VESA 56Hz
800_600	37.88	60.32	SVGA VESA 60Hz
800_600	46.875	75	SVGA VESA 75Hz
832_624	49.72	74.55	MAC_ NORMAL 16"
1024_768	48.36	60	XGA VESA 60Hz
1024_768	60.23	75.03	XGA VESA 75Hz
1024_768	56.47	70.07	XGA VESA 70Hz
1024_768	60.24	75.08	MAC_ NORMAL 19"
1152_870	68.68	75.06	MAC_ NORMAL 21"
1280_1024	63.98	60.02	SXGA VESA 60Hz
720_480	31.7	59.94	480p
720_480	15.73	59.94	480i
768_575	31.25	50	575p
768_575	15.63	50	575i
1280_720	37.5	50	720p-50Hz
1280_720	45	60	720p-60Hz
1366_768	48.36	60	WXGA
1360_768	47.7	60	WXGA
1920_1080	28.125	50	1080i-50Hz
1920_1080	33.75	60	1080i-60Hz
1920_1080	56.25	50	HDTV1080p-50Hz
1920_1080	67.5	60	HDTV1080p-60Hz
1920_1080	27.00	24	HDTV1080p-24Hz
1920_1080	28.13	25	HDTV1080p-25Hz
1920_1080	33.75	30	HDTV1080p-30Hz

Depending on the condition of signals and the type and length of cables, these signals may not be properly viewed.  
To save the **native resolution 1366\_768** setting switch the monitor off then on using the standby button.





Part No. 1KA6P1P0391--

**SANYO**

Printed in U.K.