

Using the Touch Panel Display

The Touch Panel Display

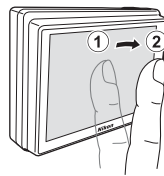
The touch panel relies on static electricity, and may not respond if covered with commercially-available protective film or touched with fingernails or gloved fingers. Use the ball of the finger and be sure it comes into direct contact with the display. Do not exert undue pressure or touch the display with sharp objects.

Tap

Tap the display to:

- Select icons or other controls
- Select pictures in a thumbnail list
- Perform touch shutter, touch AF/AE, or subject-tracking operations
- Record or view movies

To *tap* the display, touch it (①) and then immediately remove your finger (②).



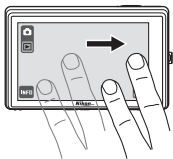
Tapping

You can zoom the camera in or out by leaving your finger on the **W** or **T** icons. Touching **T** at the maximum optical zoom position activates digital zoom. In other cases, the camera may not respond if you leave your finger in one place too long.

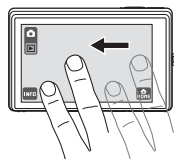
Two-Finger Drag

Drag two fingers across the display during playback to scroll rapidly ten pictures back or ten pictures forward. Place two fingers on the display about 1.5 cm (0.6 in., or about the width of a finger) apart and slide them about 2 cm (0.8 in.) left or right. Tap the display to stop at the current frame.

Scroll back ten frames



Scroll ahead ten frames



Note that the desired results may not be achieved if your fingers are placed side by side.



Two-Finger Drag

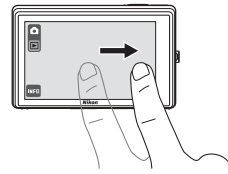
The camera may not respond if:

- The distance you drag your fingers is too long or too short
- You stroke the display too lightly
- You move your fingers too quickly
- The distance between your fingers changes while you drag them over the display

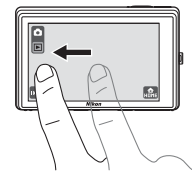
One-Finger Drag

Drag one finger across the display during playback to scroll through pictures one at a time. One-finger drag can also be used to scroll pictures during playback zoom or to use sliders to adjust exposure compensation or other settings. Touch the panel and slide your finger before removing it from the display (to scroll through pictures, slide your finger about 2 cm/0.8 in. before removing it from the display).

View previous frame



View next frame



One-Finger Drag

The camera may not respond if:

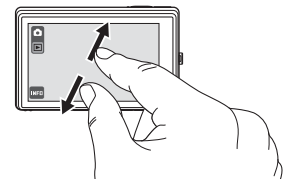
- Your finger bounces off the display
- You drag your finger over too short a distance
- You stroke the display too lightly
- You move your finger too quickly

Spread

Spread two fingers apart during playback to:

- Zoom the current picture in
- Reduce the number of thumbnails displayed

Place two fingers on the display about 1.5 cm (0.6 in., or about the width of a finger) apart and slide them each outwards 1 cm (0.4 in.) or more.

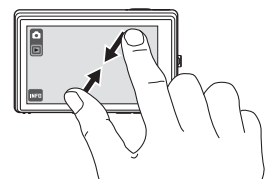


Pinch

Pinch two fingers together during playback to:

- Zoom the current picture out
- Display thumbnails or increase the number of thumbnails displayed

Place two fingers on the display and slide them each 1 cm (0.4 in.) or more toward the center.



Spreading/Pinching

The camera may not respond if:

- You drag your fingers over too short a distance
- You stroke the display too lightly
- You move your fingers too quickly
- Both fingers do not make contact with the display at about the same time