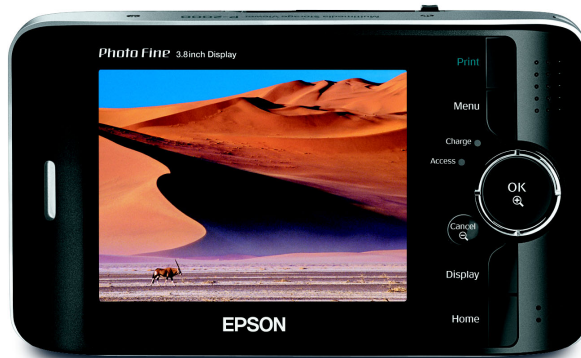


EPSON[®] MULTIMEDIA STORAGE VIEWER
P-2000



User's Guide

All rights reserved. No part of this publication may be reproduced, stored in a retrieval system, or transmitted in any form or by any means, electronic, mechanical, photocopying, recording, or otherwise, without the prior written permission of Seiko Epson Corporation. The information contained herein is designed only for use with this Epson product. Epson is not responsible for any use of this information as applied to other products.

Neither Seiko Epson Corporation nor its affiliates shall be liable to the purchaser of this product or third parties for damages, losses, costs, or expenses incurred by the purchaser or third parties as a result of accident, misuse, or abuse of this product or unauthorized modifications, repairs, or alterations to this product, or (excluding the U.S.) failure to strictly comply with Seiko Epson Corporation's operating and maintenance instructions.

Seiko Epson Corporation shall not be liable for any damages or problems arising from the use of any options or any consumable products other than those designated as Original Epson Products or Epson Approved Products by Seiko Epson Corporation.

Seiko Epson Corporation shall not be held liable for any damage resulting from electromagnetic interference that occurs from the use of any interface cables other than those designated as Epson Approved Products by Seiko Epson Corporation.

Trademarks

Epson, Epson Stylus, and Print Image Framer are registered trademarks, and Photo Fine and P.I.F. are trademarks of Seiko Epson Corporation.

PictureMate is a trademark, and Epson Store and Epson Connection are service marks of Epson America, Inc.

General Notice: Other product names used herein are for identification purposes only and may be trademarks of their respective owners. Epson disclaims any and all rights in those marks.

Contents

Introduction

Features	6
Using the Documentation	6

Chapter 1 Getting Started

P-2000 Parts	7
P-2000 Lights and Buttons	8
About the AC Adapter	9
Installing the Battery	9
Charging the Battery	10
Removing the Battery	11
Conserving Battery Power	11
Using the Viewing Stand	12
Turning On the Power	12
Setting the Language, Date, and Time	12
Locking the Buttons	13
Using the Home Screen	14
Turning Off the Power	15

Chapter 2 Using Memory Cards

Inserting and Removing Memory Cards	16
Using the CompactFlash Card Slot	17
Using the Secure Digital Card Slot	18
Copying Files from a Memory Card	19
Supported Image Formats	19
Copying Your Files	19
Browsing Files on a Memory Card	20
Zooming an Image	21
Displaying Information	21
Displaying a Histogram	22
Displaying Images as a Slide Show	22

Chapter 3 Viewing and Playing Images, Audio, and Video

Screen Icons	23
Screen Icon Descriptions	24
Displaying Images	25
Zooming an Image	26
Displaying Information	26
Displaying Images as a Slide Show	27
Rotating an Image	27
Playing Audio and Videos	28
Supported Video Formats	28
Supported Audio Formats	28
Playing Audio and Video Files	29
Controlling Audio and Video Play	29
Viewing Files on a TV	30

Chapter 4 Managing Files

Working with Albums	31
Copying Files to an Album	31
Creating a New Album	33
Changing an Album's Name	34
Deleting an Album	34
Creating an Album Shortcut	35
Deleting Files and Folders	35

Protecting Files	37
Creating an Album/Folder Thumbnail	38
Using the Pop-Up Menu	38
Settings Available in the Pop-Up Menu	39
Settings Available in the Slide Show Pop-up Menu	40
Copying Files to and From Your Computer	40
Connecting the P-2000 to Your Computer	40
Disconnecting the P-2000 From Your Windows Computer	41
Disconnecting the P-2000 From Your Macintosh	42

Chapter 5 Direct Printing

Connecting the P-2000 to a Printer	43
Printing Your Photos	44
Creating Print Orders	46

Chapter 6 Customizing Settings

Adjusting the LCD Brightness	47
Adjusting the Volume and Beep Sounds	47
Setting the Slide Show Options	48
Changing the Copy Mode Setting	48
Setting the Power Save Options	49
Changing the View Mode Settings	49
Selecting the Video Out Signal	50

Setting the Date and Time	50
Choosing the Language	51
Checking the Remaining Storage Space	51

Chapter 7 Maintenance and Troubleshooting

Cleaning the P-2000	52
Error Messages	52
Problems and Solutions	53
Power Problems	53
File Viewing Problems	54
File Operation Problems	55
Printing Problems	56
Updating the Firmware and Printer Driver	56
Resetting the P-2000	56
Where to Get Help	57

Notices

Safety Instructions	58
FCC Compliance Statement for United States Users	63
Declaration of Conformity	64

Standards and Approvals	64
Epson P-2000	64
AC Adapter	64
Battery (Model EU-97)	64
Specifications	65
General	65
Electrical	65
Interface	66
Battery	66
AC Adapter	66
Optional Accessory	66

Index

Introduction

With the Epson® P-2000 multimedia storage viewer, you can enjoy photos, videos, and music wherever you go. Your images are displayed on Epson's exclusive 3.8-inch Photo Fine™ LCD in brilliant color and sharp detail.

Features

- High-quality 3.8-inch LCD with Photo Fine technology
- Support for JPEG files
- Support for RAW files from select digital SLR cameras
- Support for MP3 and AAC audio
- Support for MPEG4 and Motion JPEG video
- 40GB hard drive
- Two slots for CompactFlash® and SD™ (Secure Digital) memory cards
- Hi-speed USB 2.0 interface for PC or Macintosh®
- Direct printing to select Epson printers
- Lithium ion battery and AC adapter
- VGA output to display pictures on a TV or projector

Using the Documentation

This guide provides information and instructions for all the P-2000 features, including troubleshooting tips.

Make sure you read and follow all the “Safety Instructions” on page 58. Please follow these guidelines:

Warning:

Must be followed carefully to avoid bodily injury.

Caution:

Must be observed to avoid damage to your equipment.

Note:

Contains important information and useful tips on the operation of your product.

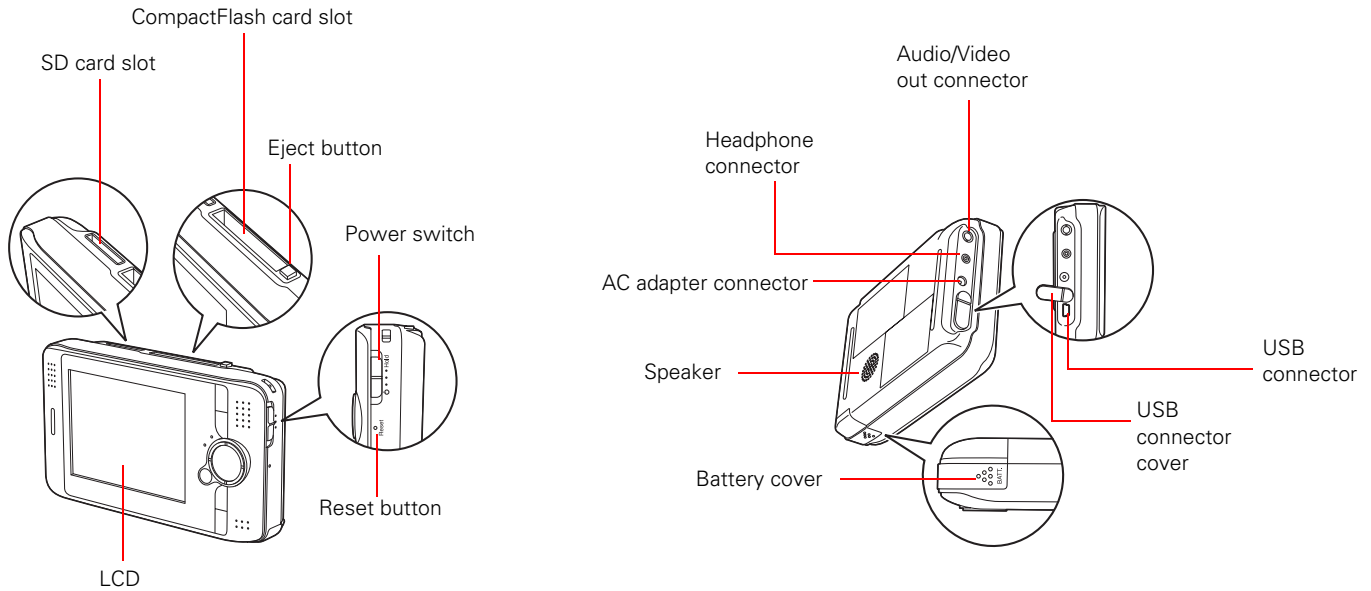
If you need assistance using your P-2000, see “Where to Get Help” on page 57.

Your package also includes a *P-2000 Basics* guide. Keep it with the P-2000 for handy reference when you travel.

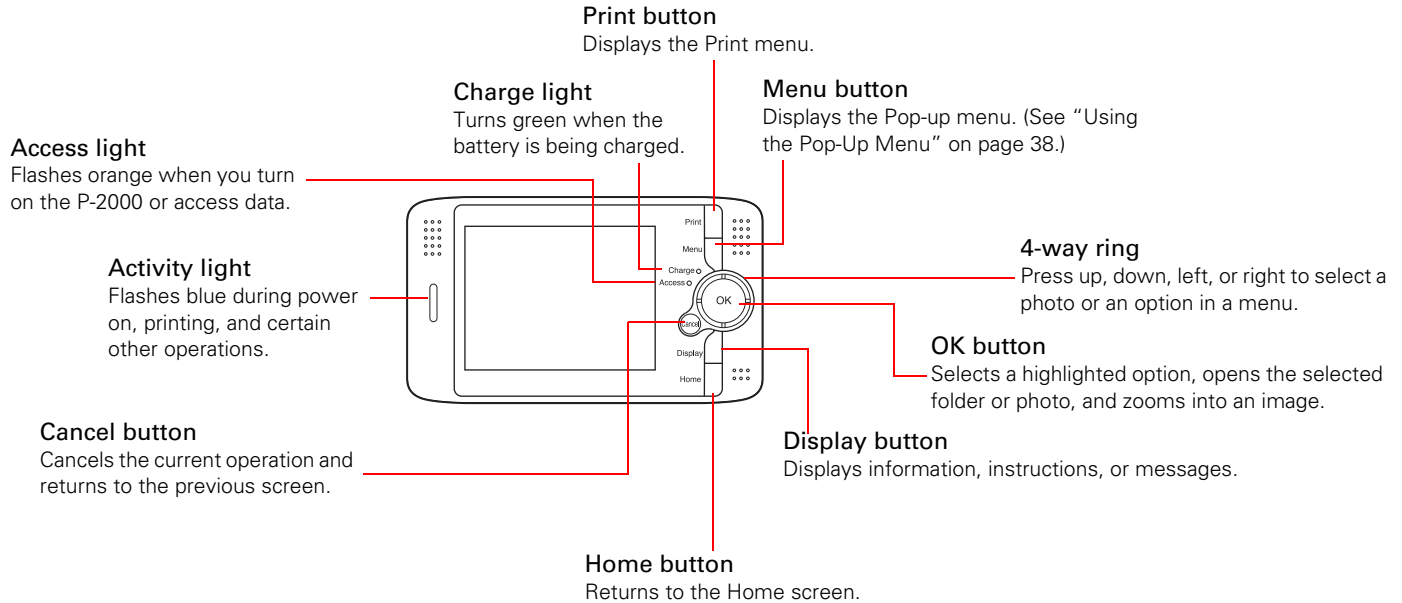
Chapter 1

Getting Started

P-2000 Parts



P-2000 Lights and Buttons



About the AC Adapter

The P-2000 comes with an AC adapter. Use the adapter to charge the battery and when the P-2000 is connected to a computer or printer. You might also want to use it whenever possible to view videos or photos, so you can save battery power.

Warning:

Use only the AC adapter provided, which is designed for the P-2000. Using another adapter could cause fire, electrical shock, or injury.

Do not use the AC power cord or the adapter for any purpose other than powering the P-2000.

To prevent fire or electric shock, do not cover the AC adapter with a blanket or similar covering.

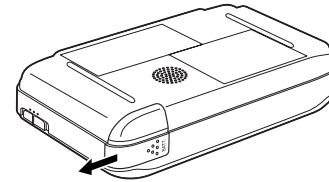
Do not connect the AC adapter when the battery is not installed; this can damage the P-2000.

Do not remove the AC adapter from this device during operations. You can, however, connect the adapter during operations.

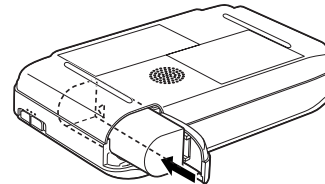
Installing the Battery

The P-2000 comes with a Lithium-ion battery. Follow these steps to install it:

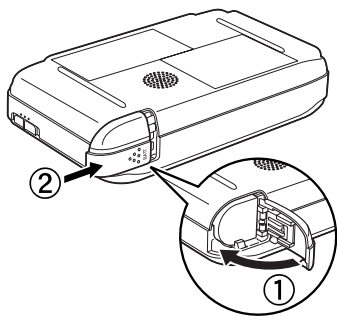
- 1 Turn the P-2000 upside down and slide the battery cover to the left to open it.



- 2 Insert the battery into the compartment as shown. Make sure the gold contacts on the battery go in first.



- 3** Close the battery cover and slide it to the right until it clicks.

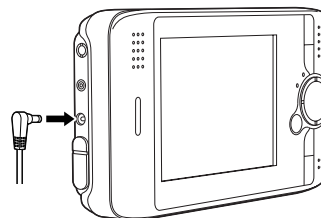


Charging the Battery

After installing the battery, you need to charge it using the AC adapter. It takes about 3 hours to fully charge the battery when the P-2000 is off. It takes longer when the P-2000 is on.

The **Charge** light is green while the battery is being charged. When the battery is fully charged, the light turns off.

To charge the battery, connect the AC adapter as shown below. Connect the other end to the power cord, and plug it into an electrical outlet.



Caution:

Do not connect the AC adapter when the battery is not installed; this can damage the P-2000.

The battery status is displayed in the top right corner of the LCD screen when the P-2000 is on.

	Battery is fully charged.
	Battery power is about half full.
	Battery power is low.
	Battery power is running out. The P-2000 will shut down automatically. Charge the battery using the AC adapter.
	Battery is charging.

Note:

The P-2000 stops charging if the battery becomes hot when operating it during charging. It will start charging again when it cools down.

Removing the Battery

If you plan to store the P-2000 for an extended period of time, you should remove the battery.

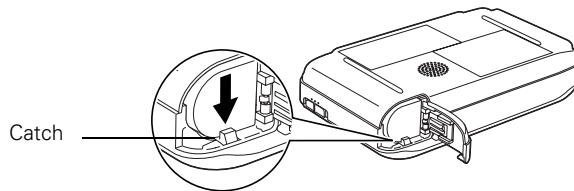
- 1 Make sure the P-2000 is turned off.

Caution:

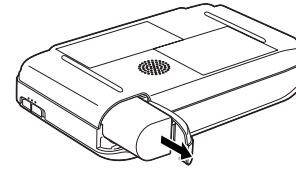
Remove the AC adapter if it is connected to the P-2000.

Never remove the battery while the P-2000 is turned on. Doing so may cause files to be lost or damaged.

- 2 Open the battery cover.
- 3 Push the catch down. The battery pops out.



- 4 Pull out the battery. Then close the battery cover.



Conserving Battery Power

To conserve battery power and protect the LCD screen, the P-2000 has two power-saving features. If no button has been pressed and there has been no activity for 10 minutes, the backlight on the LCD screen is turned off. After 15 minutes, the power is turned off.

Note:

You can change the number of minutes for these settings; see "Setting the Power Save Options" on page 49.

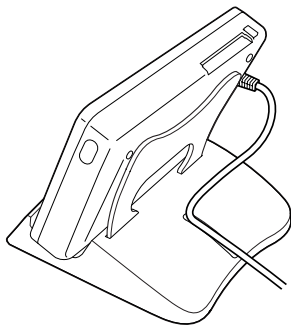
If the screen goes dark because the backlight is turned off, press any button on the P-2000 to resume operation. If the P-2000 has been powered off, you need to turn it back on with the power switch.

Note:

The power is also turned off if the P-2000 gets too hot. If this happens, let it cool before turning it back on.

Using the Viewing Stand

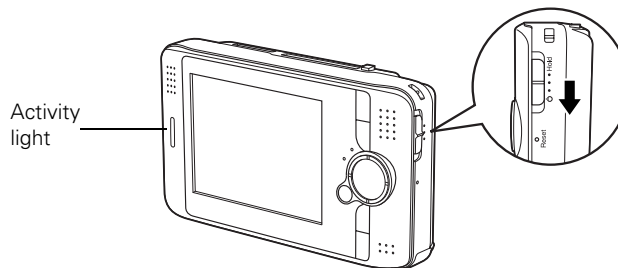
Assemble the viewing stand and place your P-2000 on the stand as shown.



This is especially convenient for watching videos and slide shows.

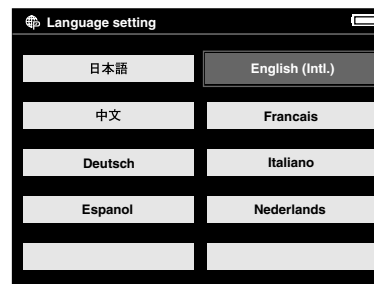
Turning On the Power

To turn on the power, slide the power switch down as shown below, then release it. The blue activity light flashes.



Setting the Language, Date, and Time

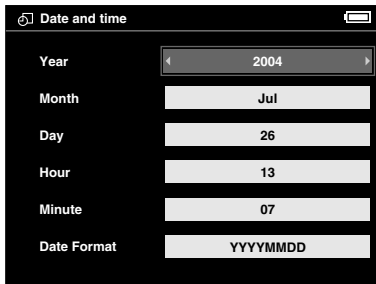
When you turn on the P-2000 the first time, you see the language setting screen:



Note:

If you see the Home screen instead, the language has already been selected. To change it or check the date and time, select **Settings** on the Home screen. Then follow the instructions in “Setting the Date and Time” on page 50 or “Choosing the Language” on page 51.

- 1 Press the **OK** button to select **English**. You see a message about setting the date.
- 2 Press the **OK** button. You see the Date and Time Settings screen:



- 3 Press right or left on the 4-way ring to change the value for the selected item (such as the year).
- 4 To go to the next option (**Month** or **Day**, for example) press up or down. Then press right or left to change that setting.

- 5 After you finish making all settings, press the **OK** button. You see the Home screen. See “Using the Home Screen” on page 14 for details

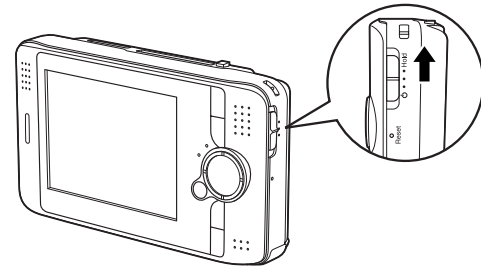
Note:

If you remove the battery, the date and time settings will be erased after about one day. The next time you turn on the P-2000, the date and time setting screen will be displayed.

Locking the Buttons

You can lock the buttons on the P-2000. This allows you to place the P-2000 in a purse or backpack and use it with headphones without accidentally pressing the buttons.

To lock the buttons, slide the power switch to **Hold**.

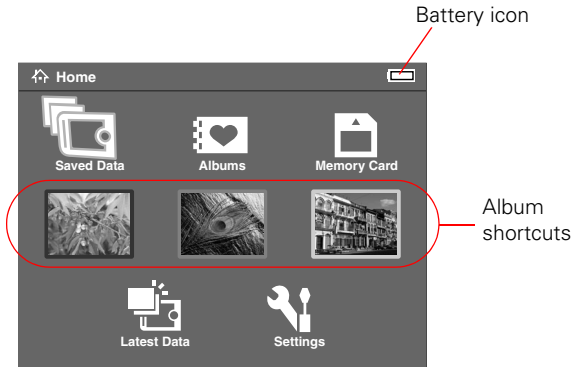


To unlock the buttons, slide the power switch back to the middle position.

Using the Home Screen

Whenever you turn on the P-2000, the Home screen appears. All operations can be started from this screen.

You can return to the Home screen at any time by pressing the **Home** button.

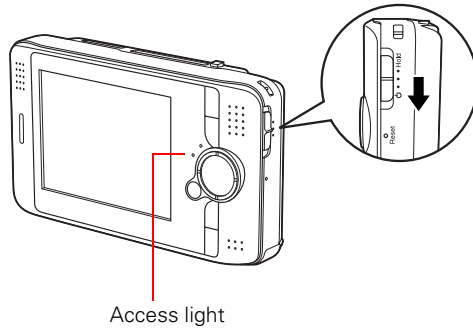


The following table summarizes the Home Screen functions.

Battery icon	Indicates the charge remaining in the battery. See "Charging the Battery" on page 10 for details.
Saved Data	Lets you select folders that include files saved on the P-2000.
Albums	Lets you select albums that you have created for your images, video, or audio files.
Memory Card	Lets you display or copy files from a memory card.
Shortcut icons	Let you go right to a favorite album. See "Creating an Album Shortcut" on page 35.
Latest Data	Lets you access the most recent files saved on the P-2000.
Settings	Lets you change the P-2000's settings. See Chapter 6, "Customizing Settings."

Turning Off the Power

Before you turn off the P-2000, make sure the **Access** light is off. Then slide the power switch as shown below, and hold it down for a few seconds until the **Access** light flashes and the P-2000 turns off.



Chapter 2

Using Memory Cards

The P-2000 has two memory card slots, one for CompactFlash cards, and one for Secure Digital cards.

This chapter explains how to insert and remove memory cards and how to display and copy files.

Inserting and Removing Memory Cards

The P-2000 supports the following types of memory cards:

- CompactFlash Type I and Type II
- Microdrive™ (3.3 V)
- SD (Secure Digital)
- MultiMedia card (MMC V 2.1 or later), up to 512MB

If you have a CompactFlash adapter, you can also use the following types of memory cards:

- Memory Stick®
- SmartMedia™ (3.3 V only)
- xD-Picture card™

Caution:

Make sure you follow all instructions included with your memory card.

Never remove a memory card while the **Access** light is flashing. Doing so may cause files to be lost or damaged.

Do not put labels or stickers on memory cards. The sticker may peel off, preventing the card from being ejected and damaging the P-2000.

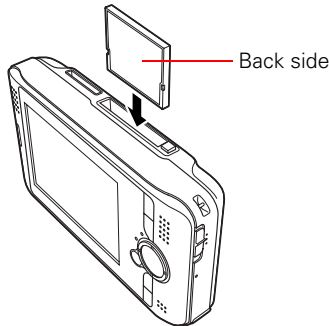
Avoid using or storing cards in direct sunlight, or in places that are extremely hot, humid, or dusty.

Using the CompactFlash Card Slot

You can use Type I and Type II CompactFlash cards or Microdrive cards in the C/F Card slot. If you have a CompactFlash adapter, you can also use other types of cards, as described in “Inserting and Removing Memory Cards” on page 16.

Insert the memory card into the slot with the back of the card facing the LCD. Then push the memory card all the way into the slot.

If you are using a CompactFlash adapter, put the card into the adapter and insert the adapter into the slot.

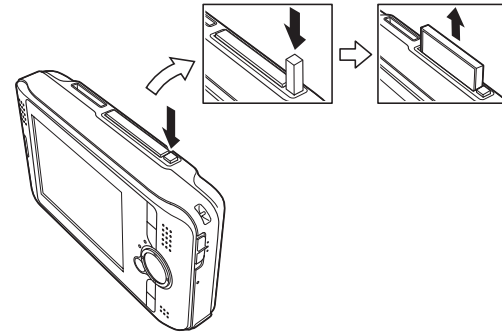


Caution:

Make sure you insert memory cards in the correct orientation. Otherwise, the card and P-2000 may be damaged.

To remove a card from the C/F Card slot, first make sure the Access light is off. Then press the eject button and pull out the card.

If the button is not sticking out, press it once to pop it out, then press it again to eject the card.



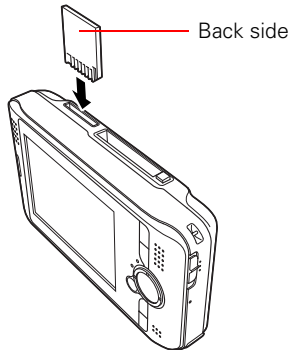
Note:

If you are using a CompactFlash adapter, remove the adapter from the P-2000; do not remove only the memory card.

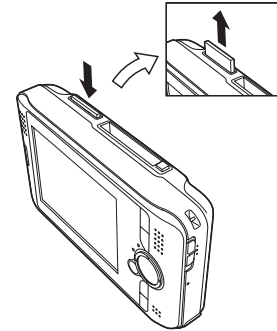
Using the Secure Digital Card Slot

You can use Secure Digital or MultiMedia cards in the SD Card slot.

Insert the memory card into the slot with the back of the card facing the LCD. Then push the memory card all the way into the slot.



To remove a card from the SD Card slot, first make sure the Access light is off. Then press in on the top of the card.



When the card pops out, pull it out of the slot.

Caution:

Make sure you insert memory cards in the correct orientation. Otherwise, the card and P-2000 may be damaged.

Copying Files from a Memory Card

After you insert a memory card, you can browse the files and decide what you want to do with them, or simply copy all the files on the card to the P-2000.

Supported Image Formats

Supported Files	Extension	Details
JPEG	.jpg .jpeg	Minimum size: 160 × 120 pixels Maximum size: 17.8 megapixels* Maximum image aspect ratio: 8:1 Progressive JPEG files are not supported.
RAW	.cr2 .crw .erf .mrw .nef .pef	JPEG data stored in the header of RAW files is displayed.

* Pixels refer to image resolution, not file size (bytes). The pixel size depends on the capability and settings of the camera used to capture the image, and whether you have resized the image in an image-editing program.

Note:

You cannot rotate JPEG files larger than 8.9 megapixels.

The P-2000 supports images in RAW format that you have taken with the following digital SLR cameras:

- Epson R-D1
- Canon® EOS-D30, EOS-D60, EOS-10D, Kiss Digital, and EOS-1D Mark II
- Konica Minolta® Maxxum-7
- Nikon® D100, D1H, D2H, D1X, and D70
- Pentax® *ist D and *ist DS

RAW files do not support direct printing, rotation, zooming, or slide shows with the P-2000.

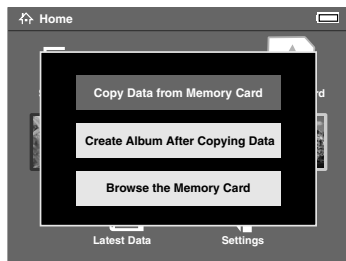
Note:

When the battery is low, copying may not be completed. Use the AC adapter if this happens.

Copying Your Files

- 1 Insert the memory card as described in “Using the CompactFlash Card Slot” on page 17 or “Using the Secure Digital Card Slot” on page 18.
- 2 Select **Memory Card** in the Home screen and press the OK button.

- 3** If necessary, select the memory card you want to access. You see the following menu:



- 4** Select what you want to do by pressing up or down on the 4-way ring. Then press the OK button.
- If you select **Copy Data from Memory Card**, copying starts and the following screen appears:



The files are copied to a folder that is automatically created on the P-2000. The folder is named according to the date, for example 20041225.001. Folders are numbered in the order they are copied.

- If you select **Create Album After Copying Data**, you can select an album or create a new one. See “Creating a New Album” on page 33 for instructions.
- If you select **Browse the Memory Card**, you see thumbnail images of the files on the card. See the following section for more information about browsing.

Browsing Files on a Memory Card

After you select Browse the Memory Card, you see thumbnail images of the files on the card.



Note:

Although you can play audio and video files on a memory card, you will get better performance by copying them to the P-2000 before you play them. See "Playing Audio and Video Files" on page 29 for instructions.

- To move to the next screen full of images, press and hold up or down on the 4-way ring.
- To view an image full screen, use the 4-way ring to select the image you want, then press the OK button.

The selected image is enlarged to fit the full screen:



Press right or left on the 4-way ring to display the next or previous image. Video, audio, and unsupported files are skipped.

When an image is displayed full screen, you can zoom in or display information about the image, as described in the following sections.

Zooming an Image

- To zoom in on an image displayed full screen, press the OK button. Continue pressing it to zoom in even further.
- To zoom out, press the Cancel button.
- To move around a zoomed image, use the 4-way ring.

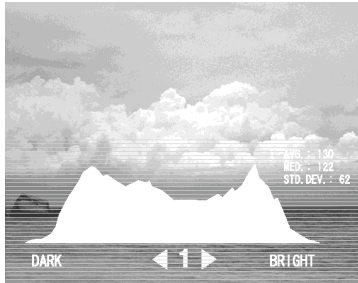
Displaying Information

To view information about a full-screen image, press the Display button. The following information is displayed:

- File name
- Camera model
- Date of photo
- Pixel size
- Focal length
- ISO speed rate
- F-stop
- Shutter speed
- Exposure bias
- White balance
- Metering mode
- Flash

Displaying a Histogram

When an image is displayed full screen, press the **Display** button twice to see a histogram that shows the photo's distribution of highlights, shadows, and mid-tones.



Displaying Images as a Slide Show

You can display JPEG images on a memory card as a slide show.

- 1 Press the **Menu** button to display the pop-up menu.
- 2 Select **Start Slide Show** and press the **OK** button. The slide show starts.

Note:

You can select transition effects, duration, and background music for the slide show. See “Setting the Slide Show Options” on page 48 for details.

You can also do the following from the pop-up menu when viewing images on a memory card:

- Lock an image to prevent deletion
- Copy the current image, all images, or selected images
- Delete the current image, all images, or selected images

For more information, see “Using the Pop-Up Menu” on page 38.

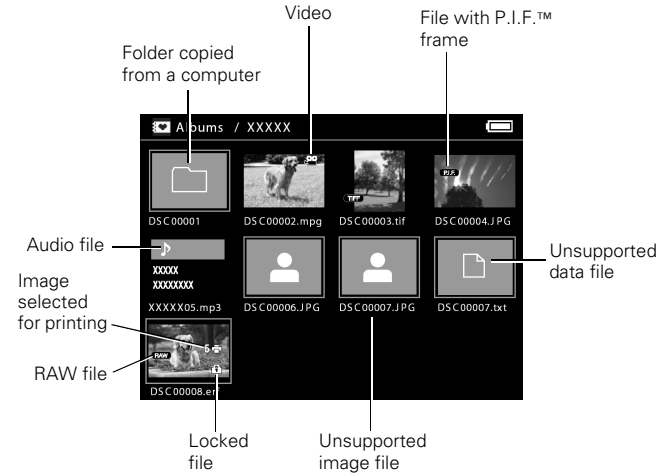
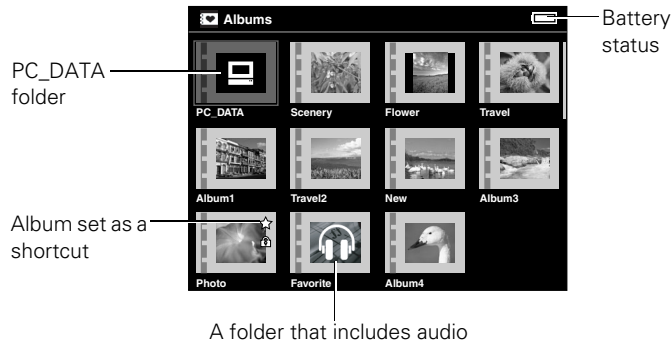
Chapter 3

Viewing and Playing Images, Audio, and Video

After you have copied files from a memory card, you can view or play them in various ways. This chapter explains how to view images and play audio and video files on your P-2000 and on a TV or projector.






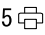




Screen Icons




The following illustrations identify the icons that appear on the screen:




* P.I.F. is the abbreviation for Print Image Framer®, which lets you add frames to your images. Some Epson digital cameras support this feature.

Screen Icon Descriptions

 PC_DATA folder	This is one of the default albums, which you use for copying files from your computer.
 Battery status	See “Charging the Battery” on page 10.
 Folders containing audio	Only folders that do not include image or video files display this icon.
 Album shortcuts	See “Creating an Album Shortcut” on page 35.
 RAW files	See “Supported Image Formats” on page 19.
 Images selected for printing	The number next to the icon indicates the quantity. See “Creating Print Orders” on page 46.
 Video files	See “Playing Audio and Videos” on page 28.
 Files with P.I.F. frames	P.I.F. icons are displayed only in Saved Data.
 Unsupported data files	You can set whether unsupported files are displayed or not. The factory setting is not to display them. See “Changing the View Mode Settings” on page 49.
 Unsupported image files	

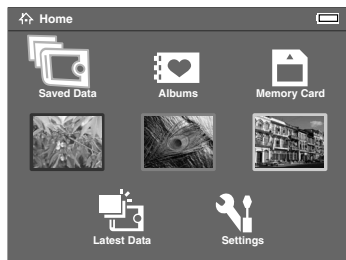
 Folders copied from a computer	When you select a folder in Saved Data, all files including those in subfolders are displayed. Subfolders are not displayed.
 Audio files	See “Playing Audio and Video Files” on page 29.
 Locked files	See “Protecting Files” on page 37.

- Files whose names contain characters other than alphanumeric are not displayed.
- When you select an album, files and subfolders included in the selected folder are displayed. Subfolders are displayed with the  icon.
- To display information or instructions, press the **Display** button. Information and instructions vary depending on the screen.

Displaying Images

You can display all images in Saved Data or Albums as thumbnails. You can also display an image in full-screen format.

- 1 Select **Saved Data** or **Albums** in the Home screen and press the OK button.



Folders or albums that include data such as images, videos, or audio appear.

Note:

In the Saved Data screen, folders are displayed by memory card. You can change the setting to display folders by date. See "Changing the View Mode Settings" on page 49.



- 2 Select the folder or album containing the images you want to view by using the 4-way ring, then press the OK button.

To move to the next screen, press down on the 4-way ring and hold.

Thumbnails of the images and other data are displayed:



- 3** Use the 4-way ring to select the image you want to view, then press the OK button. The selected image is enlarged to fill the screen:



Zooming an Image

- To zoom in on an image displayed full screen, press the OK button. Continue pressing it to zoom in even further.
- To zoom out, press the Cancel button
- To move around a zoomed image, use the 4-way ring.

Displaying Information

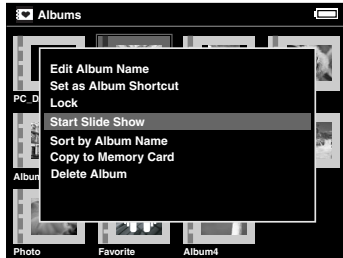
To view information about a full-screen image, press the Display button. The following information is displayed:

- File name
- Camera model
- Date of photo
- Pixel size
- Focal length
- ISO speed rate
- F-stop
- Shutter speed
- Exposure bias
- White balance
- Metering mode
- Flash

Displaying Images as a Slide Show

You can display JPEG images as a slide show.

- 1 Select the folder or album you want to display as a slide show.
- 2 Press the **Menu** button to display the pop-up menu:



- 3 Select **Start Slide Show** and press the **OK** button. The slide show starts.

Note:

You can select transition effects, timing, and background music for the slide show. See “Changing the View Mode Settings” on page 49 for details.

Rotating an Image

You can only rotate images that are stored in albums. See “Creating a New Album” on page 33 for more information.

- 1 Press the **Menu** button to display the pop-up menu, then select **Rotate**.
- 2 Press right on the 4-way ring. The sub-menu appears.
- 3 Select **Right** to rotate the image 90° clockwise or **Left** to rotate it 90° counterclockwise. Then press the **OK** button.

If you want to rotate a group of images at the same time, select **Right-Select** (to rotate clockwise) or **Left-Select** (to rotate counter clockwise).

Select the images you want to rotate, then press the **Menu** button. The images are rotated.

Note:

You cannot rotate JPEG images larger than 8.9 megapixels.

Playing Audio and Videos

The P-2000 supports video files in resolutions ranging from 160×112 pixels to 640×480 pixels, with file sizes up to 2GB. The P-2000 supports audio files up to 100MB.

WMV, MPEG1/2, and DVD-Video are not supported. However, you may be able to convert files to supported formats using programs such as QuickTime® Pro.

Supported Video Formats

File extension	Video codec	Audio codec	Max bit rate
.avi	MPEG-4 (Simple Profile)	AAC, MP3, ALaw, μ Law PCM, ADPCM	2.5 Mbps (average) at 30 fps
	Motion JPEG	ALaw μ Law PCM	3 Mbps
.mov	MPEG-4 (Simple Profile)	AAC	2.5 Mbps (average) at 30 fps
	Motion JPEG	ALaw μ Law PCM	3 Mbps

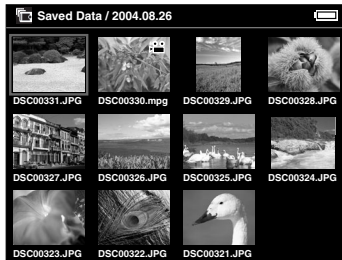
File extension	Video codec	Audio codec	Max bit rate
.mp4	MPEG-4 (Simple Profile)	AAC	2.5 Mbps (average) at 30 fps
.asf	MPEG-4 (Simple Profile)	ADPCM	2.5 Mbps (average) at 30 fps

Supported Audio Formats

File extension	Audio codec	Detail
.m4a .aac	AAC (MPEG4)	Maximum bit rate: 320 kbps (48 kHz, 16 bit Stereo)
.mp3	MP3	Maximum bit rate: 320 kbps (48 kHz, 16 bit Stereo)

Playing Audio and Video Files

Select a video or audio that you want to play, then press the OK button.



The selected video or audio starts playing. Note the following when playing video and audio:

- All videos are played with the LCD resolution (640 × 480 pixels).
- While playing audio, the LCD turns off to conserve the battery. It turns on when you press any button.
- You can select audio files to use as slide show background music using the pop-up menu. See “Using the Pop-Up Menu” on page 38 for details.
- You can listen to audio using headphones. Simply insert the headphone cable into the headphone connector on the side of the P-2000.

Controlling Audio and Video Play

The following table describes how the buttons work while playing audio and video files:

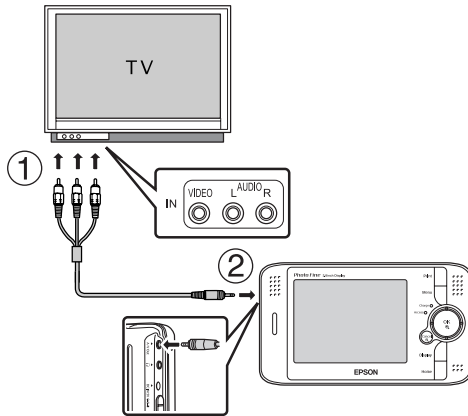
Button	Audio function	Video function
OK button	Pause (press OK again to restart)	
Cancel button	Stop the audio or video and return to the previous screen	
Up button	Raise the volume	
Down button	Lower the volume	
Left button	Play the previous audio file. Press and hold to rewind.	Rewind
Right button	Play the next audio file. Press and hold to fast forward.	Fast forward

Viewing Files on a TV

You can connect the P-2000 to a TV or AV projector and view your images, videos, and slide shows.

You will need a camcorder to TV/VCR audio/video cable (A/V cable with 3.5 mm mini-plug to 3 RCA phono plugs). You can purchase the cable at an electronics store.

- 1 Connect the three RCA plugs to the video and audio IN jacks on your TV.
- 2 Connect the mini-plug on the other end to the A/V Out connector on the side of the P-2000. The LCD screen turns off.



- 3 Set the TV display to video input from the P-2000.

Note:

Some TVs may crop your images on the top and bottom.

You can now use all of the P-2000 controls to play slide shows, photos, and videos on your TV.

Chapter 4

Managing Files

This chapter explains how to work with albums, copy and delete files and folders, and use the pop-up menu.

Working with Albums

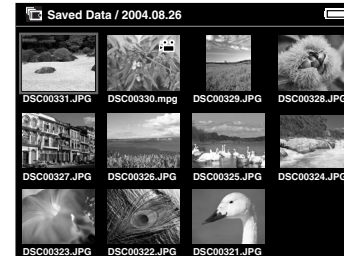
You can group your favorite files in albums. This allows you to create slide shows, portfolios, or other collections of images, videos, and audio files for special purposes.

The P-2000 includes several default albums, and you can easily create additional albums.

You can also create up to three album shortcuts on the Home screen to quickly access your favorites. See “Creating an Album Shortcut” on page 35 for details.

Copying Files to an Album

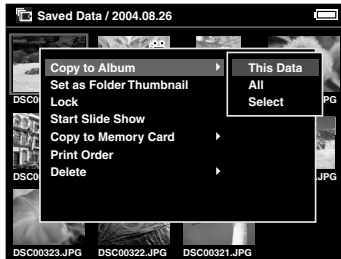
- 1 Select the file or files to be copied in the thumbnails screen.



- 2 Press the Menu button to display the pop-up menu, then select Copy to Album by using the 4-way ring.

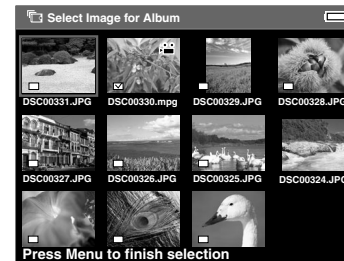


- 3 Press right on the 4-way ring. The sub-menu appears:



- 4 Do one of the following, then press the OK button:
- If you want to copy only the selected file to an album, select This Data.
 - If you want to copy all the files in the folder, select All.
 - If you want to select the file(s) to be copied, select Select.

If you choose **Select**, files in the folder are displayed as thumbnails.



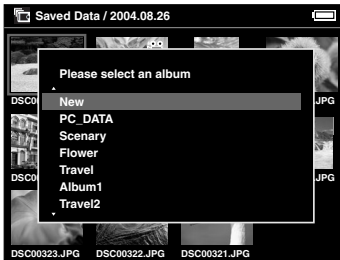
Select each file you want to copy and press the OK button.

The selected files are displayed with a ✓ check mark. After selecting all the files you want to copy, press the Menu button.

- 5 Select the album you want to copy to and press the OK button. The files are copied.

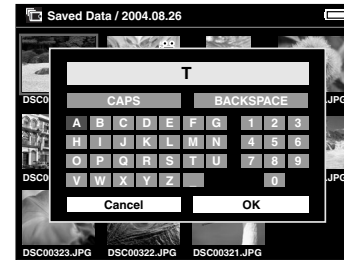
Creating a New Album

- 1 Follow steps 1 through 4 under “Copying Files to an Album.”
- 2 Select **New** and press the OK button.



- 3 If you want to use one of the default album names, select the name from the displayed list, then press the OK button.
The selected files are copied.
- 4 If you want to create a new name for the album, select **Input name** and press the OK button.

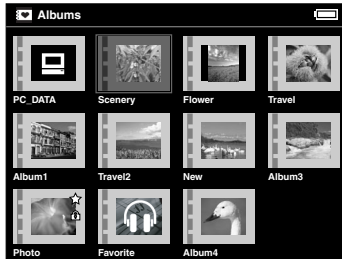
The on-screen keyboard appears:



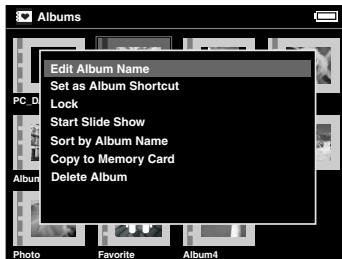
- 5 Select each letter by using the 4-way ring, then press the OK button to input the selected letter.
 - To switch the letters between uppercase and lowercase, select **CAPS** and press the OK button.
 - To delete the last letter input, press the **Cancel** button or select **BACKSPACE** on the screen and press the OK button.
To delete everything that was input, select **Cancel** on the screen and press the OK button.
- 6 After you input the name, select OK on the screen by using the 4-way ring, then press the OK button to save it.

Changing an Album's Name

- 1 Select the album whose name you want to change.



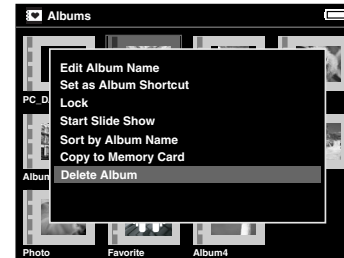
- 2 Press the Menu button to display the pop-up menu.
- 3 Select Edit Album Name by using the 4-way ring, then press the OK button.



- 4 Follow steps 4 through 5 under “Creating a New Album” on page 33.

Deleting an Album

- 1 Select the album you want to delete.
- 2 Press the Menu button to display the pop-up menu and select Delete Album by using the 4-way ring. Then press the OK button.



The confirmation dialog box appears:



- 3 Select Yes and press the OK button.

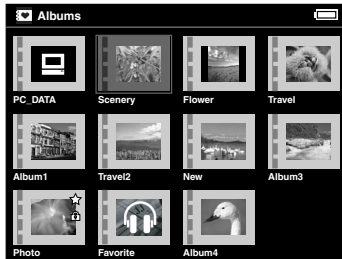
Note:

If the deleted album was set as an album shortcut, the shortcut on the Home screen is also deleted.

Creating an Album Shortcut

You can create three shortcuts on the Home screen to allow quick and easy access to your favorite albums.

- 1 Select the album that you want to make a shortcut for.



- 2 Press the Menu button to display the pop-up menu, then select **Set as Album Shortcut** by using the 4-way ring.



- 3 Press the OK button. The ☆ icon is displayed on the album thumbnail.

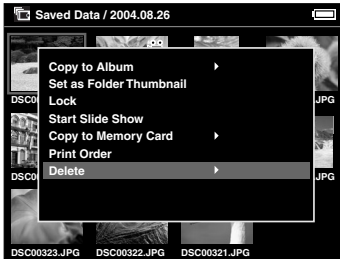
If three shortcuts already appear on the Home screen, any new shortcut will replace one of the old ones.

Deleting Files and Folders

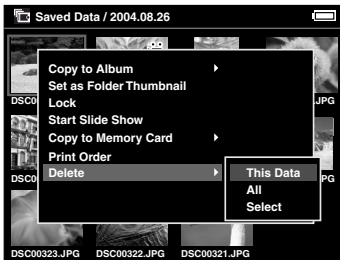
- 1 Select the file or folder that you want to delete in the thumbnails screen.



- 2 Press the Menu button to display the pop-up menu, then select **Delete** by using the 4-way ring.



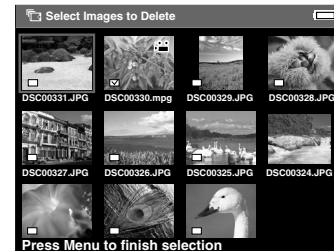
- 3 Press right on the 4-way ring. The sub-menu appears:



- 4 Do one of the following, then press the OK button:

- If you want to delete only the selected file or folder, select **This Data**.
- If you want to delete all the files in the folder, select **All**.
- If you want to select the data to be deleted in the folder, choose **Select**. Then press the OK button.

If you choose **Select**, files in the folder are displayed as thumbnails:



Select each file you want to delete and press the OK button. The selected files are displayed with a ✓ check mark.


After selecting all the files you want to delete, press the Menu button.

The confirmation screen appears:



- 5 Select **Yes** and press the OK button.

Protecting Files

You can lock selected files or folders to protect them from being deleted. When an item is locked, the  icon is displayed. Locked image files cannot be rotated.

- 1 Select the file or folder that you want to lock.

- 2 Press the **Menu** button to display the pop-up menu, and select **Lock** by using the 4-way ring. Then press the OK button.



Files remain locked until you unlock them, even when you turn off the P-2000.

Creating an Album/Folder Thumbnail

You can select an image to use as a thumbnail for an album or folder in Saved Data.

- 1 Select the file you want to use as a thumbnail in Saved Data.
- 2 Press the Menu button to display the pop-up menu, then select **Set as Album Thumbnail** or **Set as Folder Thumbnail** by using the 4-way ring.



- 3 Press the OK button.

Using the Pop-Up Menu

Press the Menu button to display the pop-up menu.



The table on page 39 summarizes the pop-up menu options. The options available depend on what you are doing when you press the **Menu** button.

Settings Available in the Pop-Up Menu

Copy from Memory Card	Copy the selected file on a memory card to the P-2000.
Copy to Album	Copy the selected file or folder to an album. See “Copying Files to an Album” on page 31.
Copy to Memory Card	Copy the selected file or folder to a memory card.
Delete	Delete a selected file or folder. See “Deleting Files and Folders” on page 35.
Delete Album	Delete the selected album. See “Deleting an Album” on page 34.
Display P.I.F. Frames*	Display the selected image with its frame if the image includes P.I.F. data. You can cancel the P.I.F. mode by pressing the Cancel button.
Edit Album Name	Change the selected album’s name. See “Changing an Album’s Name” on page 34.
Lock / Unlock	Lock or unlock the selected file or folder. See “Protecting Files” on page 37.
View by Memory Card / View by Date	Set how to display the folders in Saved Data. Folders can be grouped by memory card or date.

Print Order	Set how many copies you wish to print of the selected images. See “Creating Print Orders” on page 46.
Register to Slide show BGM	Register the selected audio file as slide show background music (BGM).
Rotate	Rotate the selected image in an album by 90°. If an image is locked or has an auto-rotation Exif tag, it cannot be rotated.
Set as Album Shortcut / Delete from Album Shortcut	Set the selected album as a shortcut on the Home screen. Or, delete the selected shortcut. See “Creating an Album Shortcut” on page 35.
Set as Album/Folder Thumbnail	Set the selected file as a thumbnail icon for an album or folder. See “Creating an Album/Folder Thumbnail” on page 38.
Sort by Album Name	Sort albums alphabetically.
Sort by Date	Sort albums by the date they were created.
Start Slide Show	Display images in the selected album or folder as a slide show. See “Displaying Images as a Slide Show” on page 27.

* P.I.F. is an abbreviation for Print Image Framer, which lets you add frames to your images. Some Epson digital cameras support this feature.

Settings Available in the Slide Show Pop-up Menu

Slide Show BGM	Select the background music to play during the slide show.
Slide Show Duration	Select the timing for each image in the slide show.
Slide Show Effect	Select one of the five slide show transition effects. The slide show is executed with the selected effect.

Copying Files to and From Your Computer

You can connect the P-2000 to your computer using the USB cable that came in the box. Your computer recognizes the P-2000 as an external hard disk drive, and you can easily copy files back and forth.

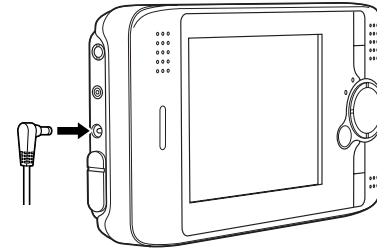
You should use the AC adapter when you connect the P-2000 to your computer.

Note:

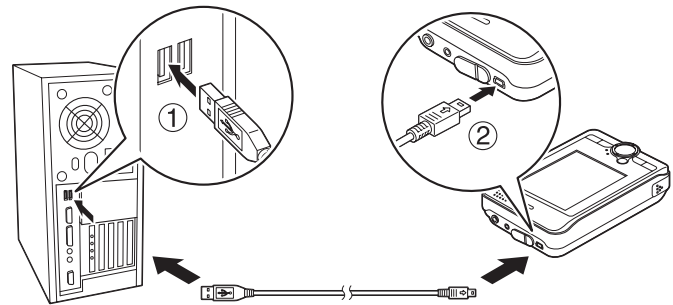
If your computer uses Windows 98SE, you need to install driver software before you connect the P-2000. See the *P-2000 Basics* guide for instructions.


Connecting the P-2000 to Your Computer

- 1 Connect the AC adapter to the P-2000 and plug it in. Then turn on the P-2000 and your computer. Make sure the P-2000 is at the Home screen.



- 2 Connect the USB cable to your computer. Then open the USB connector cover and connect the other end of the USB cable to the P-2000.



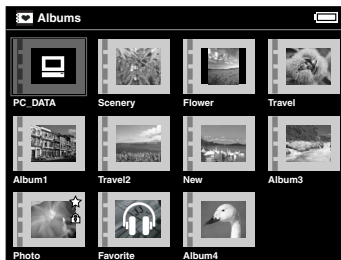
The  PC peripheral mode icon is displayed briefly, then the LCD turns off. You can turn it on by pressing any button.

- 3 Select the **EPSON_PV** drive on your computer. In Windows, you may have to use My Computer to select the drive.

From your computer, you will see an Albums folder and a Cards folder (corresponding to Saved Data on the Home screen). Do not change the names of these folders or any of their subfolders.

To locate files in the Cards folder, you will need to open a series of subfolders.

- 4 Copy files to the **PC_DATA** folder (within the Albums folder) only. If you copy files to any other folder, the P-2000 will not recognize the files.



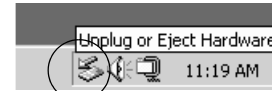
The **PC_DATA** folder is one of the default albums on the P-2000; you cannot rename or delete it or create an album thumbnail for it.

Note:

You cannot copy files from a memory card in the P-2000 to your computer; you must first copy them to the P-2000.

Disconnecting the P-2000 From Your Windows Computer

- 1 Click **Unplug or Eject Hardware** on the computer screen.



- 2 Turn off the P-2000 and remove the USB cable from your computer.

Note:

After copying files to a computer running Windows 98, you may see a blue screen when you remove the cable. To avoid this, turn the computer off before removing the cable.

- 3 Remove the USB cable from the P-2000.

Disconnecting the P-2000 From Your Macintosh

- 1** Drag and drop the P-2000 icon to the trash.
- 2** Turn off the P-2000 and remove the USB cable from your Macintosh.
- 3** Remove the USB cable from the P-2000.

Chapter 5

Direct Printing

You can print your photos directly on any of the following Epson printers without connecting a computer:

- Epson Stylus® Photo R300 and R300M
- Epson Stylus Photo R320
- Epson Stylus Photo RX600
- PictureMate™

More printers may be supported; check the Epson web site to get the latest information: <http://support.epson.com>.

You can use the following sizes and types of paper.

Paper	Size
Premium Glossy Photo Paper	4 × 6 in., 5 × 7 in., Letter, A4
Premium Semigloss Photo Paper	Letter

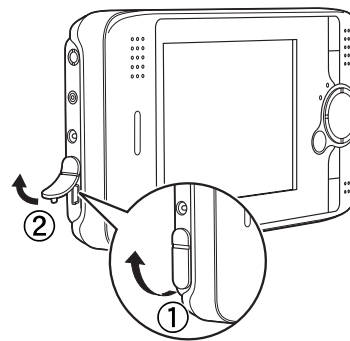
Note:

For details about paper, see your printer documentation. PictureMate prints on 4 × 6-inch paper only.

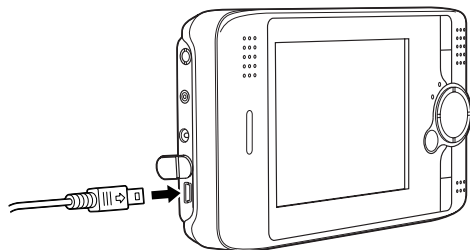
Connecting the P-2000 to a Printer

Follow these steps to connect the P-2000 to your printer:

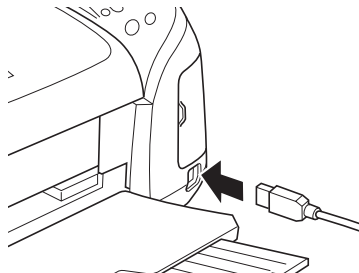
- 1** Make sure the P-2000 and the printer are turned off.
- 2** Open the USB connector cover:



- 3 Connect the small end of the USB cable to the P-2000.



- 4 Connect the other end of the cable to the EXT I/F connector on the printer.



The the EXT I/F connector may be in a different location on your printer.

- 5 Connect the AC adapter to the P-2000.
- 6 Turn on the printer and the P-2000.

Note:

Don't worry if you see the message **Camera is connected** on the printer's LCD panel. You will still be able to print from the P-2000.

Printing Your Photos

- 1 Make sure the printer is connected and has paper and ink. Make sure the AC adapter is connected to the P-2000 before you print.
- 2 To print a single photo, select the image. If you want to print multiple images in a folder or album, just open the folder or album.

Note:

You cannot print JPEG images that exceed 4600 pixels in either the vertical or horizontal direction.

- 3 Press the **PRINT** button. You see the Print menu:

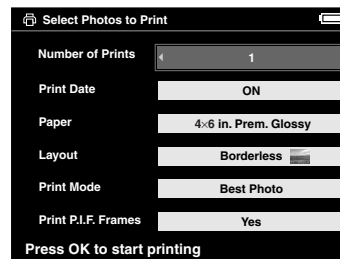


- 4** Do one of the following:
- To print only the selected image, choose **Print This Photo**.
 - To print all the images in the selected folder or album, select **Print All Photos**.
 - To add images to be printed and select the number of copies, choose **Select Photos to Print**. You see this screen:



Select the images you want to print and the number of copies for each one.

- 5** Press the OK button. You see the Print Settings menu:



- 6** Use the 4-way ring to choose the settings you want:

Number of Prints	Select the number of copies, up to 99, you want printed of the selected photo(s).
Print Date	Set whether to print the date the photo was taken (if the image includes date information) or the date the file was created.
Paper	Select the paper type and size that is loaded in the printer.
Layout	Choose Border or Borderless printing. If you selected all photos, choose the number per page. For Letter size, choose 3, 4, 9, or 20.
Print Mode	Select Photo or Best Photo.
Print P.I.F. Frames	Set whether to print the frame if the image includes P.I.F. data.

- 7 Press the OK button when you are ready to start printing.

During printing, the LCD is turned off. When you are finished printing, make sure you disconnect the USB cable.

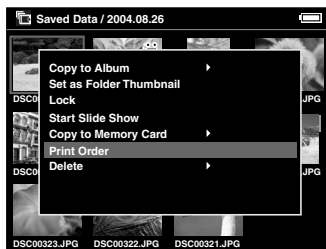
Creating Print Orders

A print order identifies images that you want to print, and the number of copies of each image. You can create or modify print orders at any time while using the P-2000. Then you can print your images whenever it is convenient.

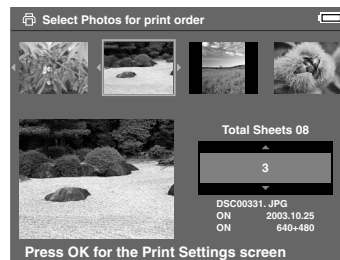
Note:

Print orders are saved even after turning turn off the P-2000.

- 1 Select an image in the thumbnails screen or in full screen view.
- 2 Press the Menu button to display the pop-up menu, and select Print Order by using the 4-way ring.




You see the print order screen:



Note:

If you select the image in full screen view, the print order screen looks different from the one above, but the instructions are the same.

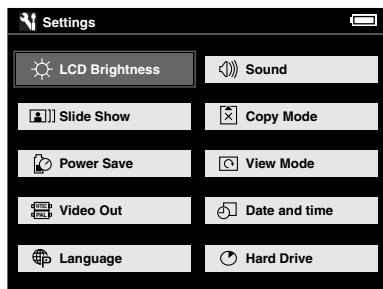
- 3 Press up or down on the 4-way ring to set the number of prints you want for the selected image.
- 4 If you want to print another image in the folder or album, use the 4-way ring to select it.
- 5 Repeat steps 3 and 4 until you set the quantities for all the images you want to print. Then press the OK button. You see the  icon on the images that have print orders. The print order is saved until the image(s) are printed.

To print the selected images you selected, follow the instructions under “Printing Your Photos” on page 44.

Chapter 6

Customizing Settings

You can easily change the P-2000's settings to make it work best for you. Select **Settings** on the Home screen and press the OK button. You see this menu:



Each of these options is described in this chapter. Select the one you want to change and press the OK button.

Adjusting the LCD Brightness

- 1 Select LCD brightness and press the OK button.
- 2 Press left or right on the 4-way ring to select the brightness level you prefer. Then press the OK button.

Adjusting the Volume and Beep Sounds

- 1 Select **Sound** and press the OK button.
- 2 Press left or right on the 4-way ring to turn the button beep on or off. This is the sound you hear whenever you press one of the buttons.
- 3 Press down on the 4-way ring to move to the volume setting, then press left or right to adjust the setting.

This setting controls the default volume for playing audio and video files. You can also adjust the volume when the files are playing.

- 4 Press the OK button when you are finished.

Setting the Slide Show Options

You can select transition effects, background music, and timing for your slide shows.

- 1 Select **Slide Show** and press the OK button.
- 2 Press left or right on the 4-way ring to choose from the following 5 transition effects:
 - Film
 - Shutter
 - Fade
 - Curtain
 - Blend

A sample of each effect plays briefly on the screen. The effect you choose will be applied to all your slide shows.

- 3 Press down on the 4-way ring to move to the background music setting.
- 4 Press left or right on the 4-way ring to choose from the 5 music files, or from 3 additional files you have registered.

See “Settings Available in the Pop-Up Menu” on page 39 for information about registering an audio file as slide show background music.

- 5 Press down on the 4-way ring to move to the **Duration** setting.
- 6 Press left or right on the 4-way ring to select the length of time you want each image to remain on the screen before switching to the next.

Choose an interval from 3 seconds to 30 minutes. The default setting is 5 seconds.
- 7 When you are finished, press the OK button.

Changing the Copy Mode Setting

This option lets you tell the P-2000 how to handle images on a memory card after copying.

- 1 Select **Copy Mode** and press the OK button.

- 2** Press left or right on the 4-way ring to choose from the following settings:
 - Select **Do Not Delete** if you do not want files on memory cards to be deleted after they have been copied to the P-2000.
 - Select **Delete** if you want files on memory cards to be automatically deleted, without a warning message, after you copy them to the P-2000.
 - Select **Confirm** before deleting if you want the P-2000 to ask before copying whether to delete the photos from the memory card after copying.
- 3** When you are finished, press the OK button.

Setting the Power Save Options

The Power Save options conserve battery power by turning off the screen backlight and turning off the power after a set interval of inactivity.

- 1** Select **Power Save** and press the OK button.
- 2** Press left or right on the 4-way ring to set the **Time before LCD power-off**.

You can select 1 min, 5 min, or 10 min. The default setting is 10 minutes.

- 3** Press down on the 4-way ring to move to the **Time before power-off** setting.
- 4** Press left or right on the 4-way ring to select the number of minutes (from 1 to 15) before the power is shut off automatically if there is no activity. The default setting is 15 minutes.
- 5** When you are finished, press the OK button.

Changing the View Mode Settings

You can change the way certain files and folders are displayed.

- 1** Select **View Mode** and press the OK button.
- 2** Press left or right on the 4-way ring to set **Auto-rotation** on or off. When this setting is on (the default), image files that include an auto-rotation setting are automatically rotated on the P-2000.
- 3** Press down on the 4-way ring to move to the **Folder View Mode** setting.
 - Choose **View by Date** to have one folder created for each date that files are copied.
 - Choose **View by Memory card** to have one folder created for each time a card is inserted.

- 4 Press down on the 4-way ring to move to the **Unsupported Files** setting.

Select **Show** if you want to see thumbnails for all files, including non-compatible file types. Select **Hide** to show only compatible files.

- 5 When you are finished, press the OK button.

Selecting the Video Out Signal

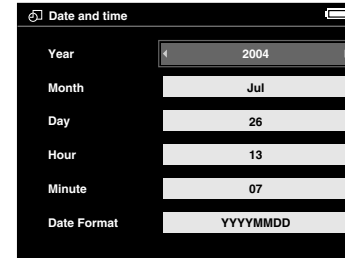
If you have connected a TV, you may need to change the video output signal method.

- 1 Select **Video Out** and press the OK button.
- 2 Press left or right on the 4-way ring to choose **NTSC** or **PAL**. (Televisions sold for the North American market are NTSC.)

If you change the setting while a device is connected, disconnect and reconnect the video cable.
- 3 When you are finished, press the OK button.

Setting the Date and Time

- 1 Select **Date and Time** and press the OK button to change these settings:



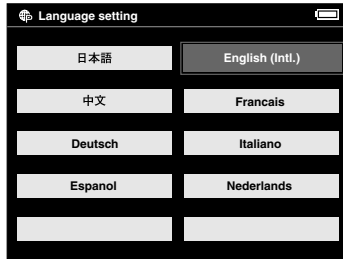
- 2 Press right or left on the 4-way ring to change the value for the selected item.
- 3 To go to the next option (**Month** or **Day** for example), press up or down. Then press right or left to change that setting.
- 4 After you finish making all settings, press the OK button.

Note:

If you remove the battery, the date and time settings will be erased after about one day; so you'll need to check and possibly change the settings. You'll also need to check the date and time after changing the battery to make sure they are set correctly.

Choosing the Language

- 1 Select **Language** and press the OK button to choose from among eight languages:



- 2 Use the 4-way ring to select the language you want, then press the OK button.

Checking the Remaining Storage Space

- 1 Select **Hard Drive** and press the OK button.

You may see a message while the P-2000 checks its space.

After a moment, you will see the amount of disk space used, the amount available, and the total disk space.

- 2 Press the OK button to return to the Settings menu.

Chapter 7

Maintenance and Troubleshooting

This chapter describes how to clean the P-2000 and solve problems.

Cleaning the P-2000




Follow these guidelines when cleaning the P-2000:

- Turn off the P-2000 before cleaning.
- Use a clean, dry cloth to wipe it clean.
- Do not use harsh or abrasive cleaners.
- If necessary, clean the battery contacts with a dry cloth.

Error Messages

When a problem occurs, an error message or icon may appear on the LCD. Refer to the following table to diagnose an error message. For more assistance, see “Problems and Solutions” on page 53.

Error message	Description
A file access error has occurred. Do not eject the memory card if it is being accessed.	Wait until the Access light turns off; then reinsert the memory card and try again.
An error occurred while verifying. Files will not be deleted.	Some files to be deleted from the memory card were skipped. Check the files.
Some errors occurred while copying. Copying was canceled.	Some files were skipped. The memory card may be write-protected. Check the memory card and try again.

Error message	Description
Some errors occurred while deleting files. The operation was canceled.	Some files were skipped. The memory card may be write-protected. Check the memory card and try again.
There is no response from the printer.	Make sure the USB cable is connected correctly. Check your printer.
You must set the date and time to ensure correct operation.	Set the correct date and time. (See page 50.)
	Wait until the P-2000 cools down.
	The battery power is running out. Charge the battery. See "Charging the Battery" on page 10 for details.
 Press Reset	Press the reset button. See "Resetting the P-2000" on page 56 for instructions.

Problems and Solutions

Use the information in this section to diagnose problems and find solutions.


Power Problems

The power does not turn on.

Cause

What to do

The battery has run out.

When the  icon appears on the top right corner of the LCD, the battery has run out. See "Charging the Battery" on page 10 and charge the battery.

The battery is not installed correctly.

Make sure the battery is installed correctly. See "Installing the Battery" on page 9.

The P-2000 may have shut off automatically to save battery power.

Slide the power switch down to turn the P-2000 back on.

File Viewing Problems

The image is not displayed.

Cause	What to do
The image format is not supported.	Make sure the image is a supported file type (JPEG or some RAW files).
The image data is corrupted.	Copy the image again.
The video or audio file is not supported.	See “Supported Video Formats” or “Supported Audio Formats” on page 28. You may be able to convert your file to one of the supported formats.
The LCD is too dark.	Adjust the LCD brightness. See “Adjusting the LCD Brightness” on page 47.
The USB cable is connected to the P-2000.	No image is displayed on the LCD when the USB cable is connected or during certain operations.
A video cable is connected to the P-2000.	The LCD turns off when you connect a video cable.

A video is not displayed clearly or stops abruptly.

Cause	What to do
The bit rate of the video is too high.	Check the bit rate. See “Supported Video Formats” on page 28 for details.

Sound breaks off when the video or audio is played.

Cause	What to do
The bit rate of the file is too high.	Check the bit rate. See “Supported Video Formats” or “Supported Audio Formats” on page 28 for details.

No sound comes out when a video is played.

Cause	What to do
The Audio Codec of the file is not supported.	Check the file format. See “Supported Video Formats” or “Supported Audio Formats” on page 28 for details.

File Operation Problems

You cannot copy a file or files.

Cause	What to do
There is not enough space available on the hard drive to copy all of the files on the memory card.	Delete unnecessary files or reduce the number of files to copy from the memory card.
The file may be damaged.	Try to copy a different file.
Your P-2000 is connected to a computer running Windows 98.	If you want to copy files to or from a computer running Windows 98, you need to install driver software. See the <i>P-2000 Basics</i> guide for instructions.

You cannot delete a file.

Cause	What to do
The file is locked.	Unlock the file and then delete it. (See “Protecting Files” on page 37 and “Deleting Files and Folders” on page 35.)

You cannot locate files on the P-2000 when it is connected to your computer.

Cause	What to do
The files are in subfolders.	To locate files in the Cards folder on the P-2000 (Saved Data), you need to open a series of subfolders.

You cannot rotate an image.

Cause	What to do
The image is not in an album.	Copy the image into an album. You can only rotate images in albums.
The image is not in JPEG format.	You can only rotate images in JPEG format.
The image file is too large.	You cannot rotate JPEG images larger than 8.9 megapixels.

Printing Problems

You cannot print.

Cause	What to do
The printer is not supported.	See “Connecting the P-2000 to a Printer” on page 43 to make sure your printer is supported.
The printer’s power is off.	Turn on the printer.
The USB cable is not connected correctly.	See “Connecting the P-2000 to a Printer” on page 43 and reconnect the cable.
You cannot print a JPEG image.	Make sure the JPEG image does not exceed 4600 pixels in either the vertical or horizontal direction.

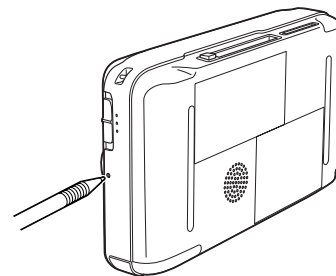
Updating the Firmware and Printer Driver

Epson will occasionally update the P-2000 firmware. You can download the latest version from Epson’s Support web site: <http://support.epson.com>. Instructions for updating the firmware in your P-2000 will be included with the download information.

Resetting the P-2000

If the P-2000 locks up, stops working, or you want to restore the default values, you can reset it.

Press the **Reset** button with a thin object.



The P-2000 shuts off, resets its default values, and comes back on.

Where to Get Help

Epson provides technical assistance 24 hours a day through the electronic support services and automated telephone services listed below.

Service	Access
World Wide Web	From the Internet, you can reach Epson Support at http://support.epson.com . At this site, you can download drivers and other files, look at product documentation, access troubleshooting information, and receive technical advice through e-mail.
Automated Telephone Services	A variety of automated help services are available 24 hours a day, seven days a week. To use these services, you must have a touch tone telephone and call (800) 922-8911 .

To speak to a technical support representative, dial:

- U.S.: **(562) 276-4303**, 6 AM to 6 PM, Pacific Time, Monday through Friday.
- Canada: **(905) 709-3839**, 6 AM to 6 PM, Pacific Time, Monday through Friday.

Toll or long distance charges may apply.

Before you call, please have the following information ready:

- Product name (Epson P-2000)
- Product serial number (located on the bottom edge of the P-2000)
- Proof of purchase (such as a store receipt) and date of purchase
- Description of the problem

You can purchase a replacement lithium ion battery (B32B818252) from an Epson authorized reseller. For product information and to find the nearest authorized reseller, please call 800-GO-EPSON (800-463-7766) or browse our catalog of products at www.epson.com, select the product you are interested in, and click “Where to Buy.” To purchase online, please visit the Epson Store at www.epsonstore.com (U.S. sales only). In Canada, please call 800-463-7766 for a reseller referral.

Appendix A

Notices

Safety Instructions

Read all these instructions before using the Epson P-2000, and keep this guide handy for later reference. Follow all warnings and instructions marked on the P-2000 and any options.

Using the P-2000

- Follow all warnings and instructions marked on this product.
- Use only AC adapter model A351H and Lithium ion battery model EU-97 with this product.
- When connecting this product to a computer or other device with a cable, ensure the correct orientation of the connectors. Each connector has only one correct orientation. Inserting a connector in the wrong orientation may damage both devices connected by the cable.
- Do not insert objects into the slots or openings on this product.
- Do not touch the components inside this product unless instructed to do so in the documentation. Never force this product's components into place. Although this product is designed to be sturdy, rough handling can damage it.
- Never spill liquid onto this product.
- If this product emits unusual noises, odors, or smoke, cancel the current operation and turn it off immediately. Disconnect the AC adapter from the product, then unplug the AC adapter from the power outlet. Contact Epson.
- To prevent fire or electric shock, do not cover this product with a blanket or other covering that may give off a static electric shock.
- To prevent fire or electric shock, do not expose this product or its options to rain or moisture.
- To prevent fire or explosion, do not use this product where flammable or volatile gas is stored.

- Do not use this product outdoors during a thunderstorm.
- Do not use this product after moving it between extreme temperatures, which may cause condensation to form on electronic parts.
- If you use this product in places where the use of electronic devices is limited, such as in airplanes or hospitals, follow all instructions in those places.

Using the Battery

- If battery acid gets into your eyes or on your skin, immediately rinse the affected area thoroughly with water and seek medical treatment. If a battery is swallowed, seek medical treatment immediately.
- Use only an Epson Lithium-ion battery for the P-2000 according to the instructions in this manual.
- Use only AC adapter model A351H and P-2000 (Model G941) to charge batteries.
- Do not use the battery that comes with this product for other devices.
- To protect against short-circuiting, do not remove the outside sleeves of the battery.
- Do not handle the battery with wet hands or use it near water.
- Do not expose the battery to water or high humidity.
- Do not drop, puncture, disassemble, mutilate, or short-circuit the battery.
- Do not place the battery near or into fire or water.
- Do not use batteries that are leaking or damaged in any way.
- Do not charge the battery on devices except this product.
- Do not charge the battery near open flame or in very hot locations.
- Keep batteries away from heat sources.
- Do not leave the battery in a vehicle, to prevent the battery from overheating.
- Do not insert objects into any openings as they may touch dangerous voltage points or short-circuit components.
- Prevent the battery from coming into contact with metal objects that could short-circuit it, such as coins or keys.
- Do not insert the battery into power outlets or other power sources such as car cigarette lighter sockets.
- Do not solder wires or terminals directly to the battery.
- Do not touch battery terminals.

- Keep batteries away from open flame if they leak or smell strange.
- If overheating, discoloration, or distortion occur, remove the battery from this product and do not use it.
- Charge the battery before using it if it has not been used for a long period.

Storing the Battery

- When not using this device for a long period, remove the battery from this product and store it separately.
- Do not store batteries where the temperature or humidity is very high.
- Store batteries out of children's reach.

Disposing of the Battery

Before disposing of the battery, make sure you discharge it completely.

Warning:

Be sure to securely cover the end of the battery with tape to prevent combustion or explosion when disposing.

Do not incinerate or dispose of the battery in fire.

Do not dispose of batteries as ordinary refuse. Instead, dispose of them in a collection or recycle box in accordance with local laws.

For users in North America and Canada:



This mark indicates that the battery will be recycled by the RBRC. When you are ready to dispose of the battery, contact the RBRC at (800) 822-8837.

Using the AC Adapter

- Use only the type of power source indicated on the AC adapter's label, and always supply power directly from a standard, domestic power outlet with a power cord that meets the relevant local safety standards.
- Place the AC adapter near an electrical outlet where the power cord can be easily unplugged.
- The AC adapter is designed for use and provided with this product. Do not attempt to use it with other electronic devices unless specified.
- Do not remove the AC adapter from this device during operations.
- The AC adapter included is designed for use with this product. Use of any other adapter could result in fire, electrical shock, or injury.
- Use only adapter model A351H with the P-2000.

- Do not connect the AC adapter when the battery is not installed. Otherwise, the P-2000 may be damaged.
- Use only the power source that meets the power requirements indicated on the label attached to the product. If you are not sure of the power supply specifications in your area, contact your local power company or regulatory agency.
- Make sure the total amperage of all devices plugged into the power outlet does not exceed the power outlet's ampere rating.
- Do not use a damaged or frayed AC adapter.
- If you use an extension cord with this product, make sure the total amperage of all devices plugged into the extension cord does not exceed the cord's amperage rating.
- Never disassemble, modify, or attempt to repair the AC adapter by yourself.
- Do not use power outlets controlled by wall switches or automatic timers.
- Do not use power outlets on the same circuit as large motors or other appliances that may cause voltage fluctuations.
- Avoid using outlets on the same circuit as photocopiers or air control systems that regularly switch on and off.
- Position this product's power cord so that it will not be stepped on or run over.
- Do not place any objects on the power cord and the AC adapter.
- Keep the power cord straight at the ends and at the points where it enters the transformer.
- The power cord should be placed to avoid abrasions, cuts, fraying, crimping, kinking, and other damage.
- If you cannot insert the plug into the power outlet, contact an electrician.
- Remove the AC plug from the outlet during lightning storms.
- For US and Canadian users: Use the included power cord or a 6 to 10 foot UL-approved type SPT-2 or heavier type, 2 × 18 AWG cord with a 125 V 10 A plug and 125 V 7 A connector.

Using the LCD

- The LCD panel on this product may contain a few small bright or dark spots. These are normal and do not mean that your LCD panel is damaged in any way.
- If the LCD panel on this product is damaged, contact Epson.

- If the liquid crystal solution contained in the LCD panel on this product leaks out and gets onto your hands, wash them thoroughly with soap and water. If it gets into your eyes, flush them immediately with water. If discomfort or vision problems remain after a thorough flushing, see a doctor immediately.
- Use only a soft, dry cloth to clean the display. Do not use liquid or chemical cleaners.

Using a Memory Card

- Only memory cards designed for the product's specifications can be used. (See "Inserting and Removing Memory Cards" on page 16.)
- The methods for using memory cards vary according to card type. See the documentation included with your memory card for details.
- Do not remove a memory card or turn off the product while the ACCESS light is flashing.

Storing, Maintaining, or Transporting the P-2000

- Do not store this product outdoors.
- Do not store this product near water.
- Do not store this product in a location subject to high temperature or humidity.

- Do not store this product in a location subject to rapid changes in temperature or humidity.
- Do not store this product in a location subject to direct sunlight or strong light sources.
- Unplug this product from the power outlet before cleaning it. Use a damp cloth for cleaning and do not use liquid or aerosol cleaners.
- Remove the battery and unplug this product and refer servicing to qualified service personnel under the following conditions: The power cord or plug is damaged; liquid has entered this product or its options; this product or its options have been dropped or the case is damaged; this product or its options do not operate normally or exhibit a distinct change in performance.

WARNING: The cords included with this product contain chemicals, including lead, known to the State of California to cause birth defects or other reproductive harm. **Wash hands after handling.**

(provided in accordance with Proposition 65 in Cal. Health & Safety Code § 25249.5 et seq)

FCC Compliance Statement for United States Users

This equipment has been tested and found to comply with the limits for a Class B digital device, pursuant to Part 15 of the FCC Rules. These limits are designed to provide reasonable protection against harmful interference in a residential installation. This equipment generates, uses, and can radiate radio frequency energy and, if not installed and used in accordance with the instructions, may cause harmful interference to radio or television reception. However, there is no guarantee that interference will not occur in a particular installation. If this equipment does cause interference to radio and television reception, which can be determined by turning the equipment off and on, the user is encouraged to try to correct the interference by one or more of the following measures.

- Reorient or relocate the receiving antenna
- Increase the separation between the equipment and receiver
- Connect the equipment into an outlet on a circuit different from that to which the receiver is connected
- Consult the dealer or an experienced radio/TV technician for help

Warning

The connection of a non-shielded equipment interface cable to this equipment will invalidate the FCC Certification of this device and may cause interference levels which exceed the limits established by the FCC for this equipment. It is the responsibility of the user to obtain and use a shielded equipment interface cable with this device. If this equipment has more than one interface connector, do not leave cables connected to unused interfaces.

Changes or modifications not expressly approved by the manufacturer could void the user's authority to operate the equipment.

For Canadian users

This Class B digital apparatus complies with Canadian ICES-003.

Cet appareil numérique de la classe B est conforme à la norme NMB-003 du Canada.

Declaration of Conformity

According to 47CFR, Part 2 and 15 for Class B Personal Computers and Peripherals; and/or CPU Boards and Power Supplies used with Class B Personal Computers:

We: Epson America, Inc.

Located at: MS 3-13
3840 Kilroy Airport Way
Long Beach, CA 90806
Telephone: (562) 290-5254

Declare under sole responsibility that the product identified herein, complies with 47CFR Part 2 and 15 of the FCC rules as a Class B digital device. Each product marketed is identical to the representative unit tested and found to be compliant with the standards. Records maintained continue to reflect the equipment being produced can be expected to be within the variation accepted, due to quantity production and testing on a statistical basis as required by 47CFR §2.909. Operation is subject to the following two conditions: (1) this device may not cause harmful interference, and (2) this device must accept any interference received, including interference that may cause undesired operation.

Trade Name: Epson

Type of Product: Multimedia Storage Viewer

Model: G941A

Product: Epson P-2000

Standards and Approvals

Epson P-2000

EMC	FCC Part 15 Subpart B Class BCSA C108.8 Class B
-----	--

AC Adapter

Safety	UL60950 CSA C22.2 No. 60950
EMC	FCC Part 15 Subpart B Class B CSA C108.8 Class B

Battery (Model EU-97)

Safety	UL2054
--------	--------

Specifications

General

CPU:	TMS320DM270
LCD:	3.8 inches, Epson VGA TFT LCD; 640 × 480 pixels; 262,144 colors; 212 ppi
Memory:	64MB SDRAM; 4MB flash ROM
HDD:	2.5 inch HDD, 40GB, FAT 32
Dimensions (without projections) and weight:	Height 3.3 inches (84 mm)
	Width 5.8 inches (147 mm)
	Depth 1.2 inches (31.4 mm)
	Weight Approx. 0.9 lb (415 g), including battery
Temperature:	Operating (or charging): 41 to 95 °F (5 to 35 °C)
	Non-operating: -4 to 140 °F (-20 to 60 °C)
Humidity: (without condensation)	Operating: 30 to 80%
	Non-operating: 10 to 80%

Memory card: 3.3V CompactFlash memory card (Type I/ Type II, including Microdrive); SD memory card, MultiMedia Card,

Note:

A commercially available CF adapter is needed to use other memory cards.

Power sources: Lithium-ion battery (Model EU-97)
AC adapter (Model A351H)

Electrical

Input voltage	DC 5.0 V
Rated current	Maximum 2.3 A
Power consumption	4 W (with the battery) 9 W (when using the AC adapter)

Interface

USB connector:	One USB 2.0 (Mass Storage Class) interface for Slave connection
A/V Out connector:	Mini pin jack (3.5 mm)
Headphone Out connector:	M3 stereo mini pin jack (3.5 mm)
CF Card slot	One slot (Type 1/Type 2, 3.3V) for CompactFlash memory card and MicroDrive
SD Card slot	One slot for SD memory card and MultiMedia card

Battery

Type:	Rechargeable Lithium-ion battery
Model:	EU-97
Size: (H × W × D)	0.88 × 0.80 × 2.78 inches (22.45 × 20.4 × 71 mm)
Ratings:	3.7 V, 2300 mAh
Temperature:	Storing: -4 to 104 °F (-20 to 60 °C)

Keep the battery in a cool place when storing for a long period.

AC Adapter

Model:	A351H
Input:	AC 100 to 240 V, 50 to 60 Hz, 0.3 to 0.1 A
Output:	DC 5.0 V, 2.3 A
Power consumption:	Maximum 18 W

Optional Accessory

Model:	Lithium ion Battery, EU-97
Product code:	B32B81825*

Index

Numerics

4-way ring, 8

A

A/V Out connector, 30

aac files, 28

AC adapter

- connecting, 10

- connector, 7

- safety instructions, 60 to 61

- specifications, 66

- standards, 64

- using, 9

Access light, 8

Accessories, 57

Activity light, 8, 12

Albums

- changing names, 34

- copying files to, 31 to 33

- creating, 33

- creating shortcuts, 35

- creating thumbnail, 38

- deleting, 34

- icon, 14

- using, 31

asf files, 28

Audio

- file formats, 28

- playing, 29

- problems, 54

- settings, 47

Audio/Video out connector, 7

Auto backlight control, 49

Auto power off, 11, 49

Auto-rotation, 49

avi files, 28

B

Background music, slide show, 48

Backlight, power-off, 11, 49

Battery

- charging, 10

- cover, 7

- disposing of, 60

- icon, 10, 14

- installing, 9 to 10

- power, conserving, 11, 49

- recycling, 60

- removing, 11

- safety instructions, 59 to 60

- specifications, 66

- storing, 60

Beep, turning on/off, 47

BGM, slide show, 39, 48

Bit rate, video, 28

Brightness, LCD, 47

Buttons

- locking, 13

- using, 8

C

Cable

- USB, 40 to 44

- video, 30

Cameras, RAW files from, 19

Cancel button, 8

Charge light, 8, 10

Charging the battery, 10

Cleaning the P-2000, 52

Codec, 28

CompactFlash

- adapter, 16

- card slot, 7, 17

Computer

- connecting, 40 to 42

- disconnecting, 41, 42

Connecting

- computer, 40 to 42

- printer, 43 to 44

- projector, 30

- TV, 30

Conserving battery power, 11, 49

Copying

- files, 19 to 20, 49

- problems, 55

Copy Mode settings, 48 to 49

Customizing settings, 47 to 51

D

- Date and Time, setting, 12 to 13, 50
- Declaration of conformity, 64
- Deleting
 - albums, 34
 - files and folders, 35 to 37, 49
- Direct printing, 43 to 46
- Disk space, 51
- Display button, 8, 26
- Duration, slide show, 48

E

- Effects, slide show, 48
- Eject button, 7
- Electrical specifications, 65
- Epson
 - accessories, 57
 - help, 57
 - Store, 57
 - supported printers, 43
- Error messages, 52 to 53

F

- FCC compliance, 63
- File formats
 - audio, 28
 - images, 19
 - video, 28

Files

- browsing on memory card, 20 to 22
- copying from memory card, 19 to 20, 49
- copying to album, 31 to 33
- copying to computer, 40 to 42
- deleting, 35 to 37, 49, 55
- locking, 37
- problems copying, 55
- problems viewing, 54
- unsupported, 50

Firmware, updating, 56

Folders

- creating thumbnail, 38
- deleting, 35 to 37
- naming, 20
- view mode, 49

H

- Hard Drive space, 51
- Headphone connector, 7
- Headphones, using with P-2000, 29
- Help, Epson, 57
- Histogram, displaying, 22
- Home button, 8
- Home screen, 14

I

Icons, 23, 24

Images

- copying to album, 31 to 33

- displaying as a slide show, 22, 27

- displaying as thumbnails, 25

- displaying information, 26

- display problems, 54

- file formats, 19

- printing, 43 to 46

- rotating, 27

- zooming, 21, 26

Installing battery, 9 to 10

Interface specifications, 66

J

JPEG files, 19

L

Language setting, 12, 51

Latest Data, 14

Layout option, 45

LCD, 7, 47, 61

Lights, 8

Locking files, 37

M

m4a files, 28

Macintosh, disconnecting P-2000, 42

Maximum bit rate, video, 28

Memory card

- adapter, 16

- browsing files, 20 to 22

- icon, 14

- safety instructions, 62

- types, 16

- viewing slide show, 22

Memory Stick, 16

Menu button, 8

Microdrive, 16

Motion-JPEG, 28

mov files, 28

mp3 files, 28

mp4 files, 28

MultiMedia card, 16

Music

- playing, 29

- slide show, 39, 48

N

NTSC, 50

Number of Prints option, 45

O

OK button, 8

P

P.I.F., 23, 39, 45

PAL, 50

Paper

- option, 45

- types and sizes, 43

PC_DATA folder, 41

PictureMate, 43

Pop-up menu, 38 to 40

Power

- conserving, 11, 49

- problems, 53

- switch, 7

- turning off, 15

- turning on, 12

Power Save options, 11, 49

Print button, 8, 44

Print Date option, 45

Printer

- connecting, 43 to 44

- settings, 45

Print Image Framer, 23, 39, 45

Printing

- photos, 43 to 46

- problems, 56

Print Mode option, 45

Print orders, 46

Problems

- copying files, 55

- deleting files, 55

- power, 53

- printing, 56

- solving, 52 to 56

- sound, 54

- video, 54

- viewing files, 54

Projector, connecting to, 30

Protecting files, 37

R

RAW files, 19

Reset button, 7, 56

Resetting the P-2000, 56

Rotating images, 27

S

Safety Instructions, 58 to 62

Saved Data, 14, 20

Secure Digital

- cards, 16

- card slot, 7, 18

Settings

- Copy Mode, 48 to 49
- customizing, 47 to 51
- Date and Time, 12 to 13, 50
- Home screen option, 14, 47
- Language, 12, 51
- LCD Brightness, 47
- Power Save, 49
- Slide Show, 48
- Sound, 47
- Video Out, 50
- View Mode, 49

Shortcut icons, 14

Shortcuts, 35

Slide show

- pop-up menu, 40
- registering music, 39
- settings, 48
- starting, 22, 27

SmartMedia card, 16

Sound

- problems, 54
- settings, 47
- turning beep on/off, 47
- volume, 29

Speaker, 7

Specifications

- AC adapter, 66
- battery, 66
- electrical, 65
- general, 65
- interface, 66
- standards and approvals, 64

Stand, 12

Status and error messages, 52 to 53

Storage space, checking, 51

T

Technical support, 57

Thumbnails, 25, 38

Time, setting, 12 to 13, 50

Troubleshooting

- audio problems, 54
- error messages, 52 to 53
- file operation problems, 55
- file viewing problems, 54
- power problems, 53
- printing problems, 56
- sound problems, 54
- video problems, 54

Turning off

- beep sound, 47
- power, 15

Turning on
 beep sound, 47
 power, 12
TV, connecting to, 30

U

Unsupported files, 24, 50
Updating firmware, 56
USB
 cable, 40 to 44
 connector, 7, 40 to 44

V

Video
 codec, 28
 file formats, 28
 playing, 29
 problems, 54
Video Out setting, 50
Viewing stand, 12
View Mode settings, 49 to 50
Volume, controlling, 29

W

Windows, disconnecting P-2000, 41

X

xD-Picture card, 16

Z

Zooming images, 21, 26