

32MB–4GB JetFlash™

User's Manual



*Your Supplier, Your Partner,
Your Friend.*

Table of Contents

Introduction

Package Contents	1
Features	1
System Requirements	2

Driver Installation

Driver Installation for Windows 98/98SE	2
Driver Installation for Windows Me, 2000, and XP	3
Driver Installation for Mac OS 9.0 or Later	3
Driver Installation for Linux Kernel 2.4 or Later	3

Uninstall the Win98 Driver	3
----------------------------------	---

How to Safely Unplug JetFlash

To Remove JetFlash in Windows 98/98SE	4
To Remove JetFlash in Windows Me, 2000, and XP	4
To Remove JetFlash in Mac OS	4
To Remove JetFlash in Linux	4

Write-Protect Function	5
------------------------------	---

Security Function

Partition Types	5
Security Function for Windows 98/98SE, Me, 2000, and XP	6
Access Data in Security Area	9
Log Out of Security Area	10
Change Password	11
If You Forget the Password	12

Boot-Up Function

System Requirements for Boot-Up Function	12
Boot-Up Function for Windows 98/98SE and Me	12
Boot-Up Function for Windows XP	14
Error Messages of Boot-Up Function	18

Recovery Function	18
-------------------------	----

Uninstall the U-Storage Tool	21
------------------------------------	----

Specifications	22
----------------------	----

Ordering Information	22
----------------------------	----

JetFlash Limited Warranty

Introduction

Thank you very much for purchasing Transcend's **JetFlash™**. This small device is designed to expedite the exchange of huge amounts of data between any desktop or laptop computers with a USB port. With higher storage capacity and a much faster data transfer rate than other typical portable storage media, **JetFlash** can easily replace floppy diskettes and hard disks. In addition, its mobility, strong data retention ability, and impressive appearance will provide you with a brand-new data storage experience.

Package Contents

The **JetFlash** package includes the following items:

- **JetFlash**
- Label
- Neck Strap
- Driver CD
- USB Extension Cable
- Quick Installation Guide

Features

- Fully compatible with USB 2.0 specification;
- Easy Plug and Play installation;
- Driverless (Only Windows® 98/98SE needs the enclosed driver);
- Powered via the USB port. No external power or battery needed;
- Write Protection: Write-protect switch provided;
- Security Function: Password protection provided;
- Boot-Up Function: Can make **JetFlash** bootable device;
- Recovery Function: Return **JetFlash** to its initial status;
- LED indicates the usage status of **JetFlash**.

System Requirements

Desktop or notebook computer with USB port

One of following operating systems:

- Windows® 98/98SE
- Windows® Me
- Windows® 2000
- Windows® XP
- Mac™ OS 9.0 or later
- Linux™ kernel 2.4 or later

Driver Installation

Driver Installation for Windows 98/98SE

1. Put the Driver CD into the CD-ROM drive (Auto-Run supported). Click the **Win98 Driver** button.



2. Follow the on-screen instructions to complete driver installation.
3. Plug **JetFlash** into an available USB port. A new **Removable Disk** drive with a newly assigned drive letter appears in the **My Computer** window.

Driver Installation for Windows Me, 2000, and XP

No driver is required. These Windows operating systems have built-in drivers to support **JetFlash**. Simply plug **JetFlash** into an available USB port, and Windows will install the files needed to use your device. A new **Removable Disk** drive with a newly assigned drive letter appears in the **My Computer** window.

Driver Installation for Mac OS 9.0 or Later


No driver is required. Just plug **JetFlash** into an available USB port and your computer will automatically detect it. A new Disk icon appears on the **Desktop**.

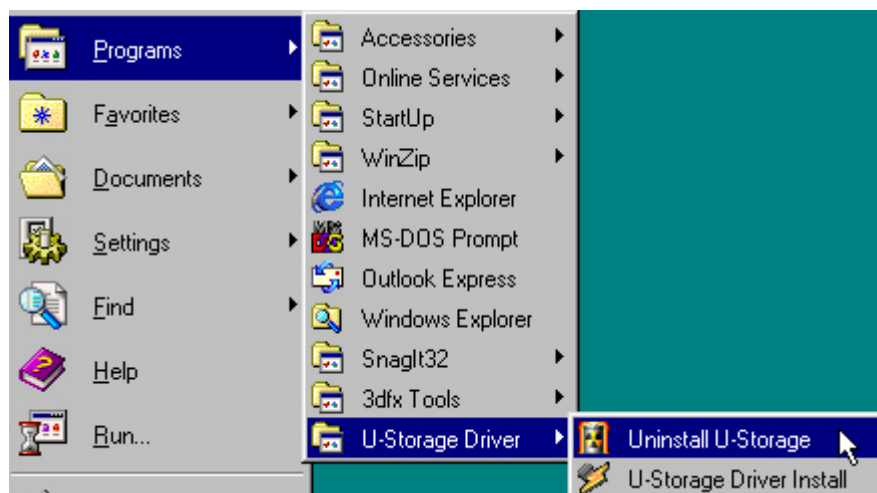
Driver Installation for Linux Kernel 2.4 or Later

No driver is required. Just plug **JetFlash** into the USB port and mount it.

- Example:
1. Create directory for **JetFlash** first
`mkdir /mnt/jetflash`
 2. Mount **JetFlash**
`mount -a -t msdos /dev/sda1 /mnt/jetflash`

Uninstall the Win98 Driver

1. Click the  button on the task bar and select **Programs > U-Storage Driver > Uninstall U-Storage**.



2. Follow the on-screen instructions to uninstall the Windows 98/98SE driver.




Before removing **JetFlash**, please make sure the LED is **steady** and **not flashing!**
If you remove **JetFlash** while the LED is flashing, unpredictable damage to the files and/or **JetFlash** may occur due to a write cache issue.

How to Safely Unplug JetFlash

To Remove JetFlash in Windows 98/98SE

Unplug **JetFlash** from your system directly when data are not transferring.

To Remove JetFlash in Windows Me, 2000, and XP

1. Click the  icon on the system tray.
2. The **Safely Remove Hardware** pop-up menu appears. Click to continue.



3. Follow the on-screen instructions to complete the procedure.
4. The **Safe To Remove Hardware** message balloon appears. **JetFlash** is now ready to be unplugged.



To Remove JetFlash in Mac OS




Drag and drop the Disk icon corresponding to **JetFlash** into the trashcan. Then unplug **JetFlash** from the USB port.

To Remove JetFlash in Linux

Unmount the device from the Linux environment.


Example: `umount /mnt/jetflash`

Write-Protect Function

When the Write-Protect switch is set to Unlocked “”, you can write and read data to and from **JetFlash**. When the Write-Protect switch is set to Locked “”, you can read data from **JetFlash**, but you can't write data to **JetFlash** or format it. Please set the switch to Unlocked “” before attempting to format **JetFlash**.

Security Function

❖ **The Security Function is not supported by Mac or Linux Operating Systems.**

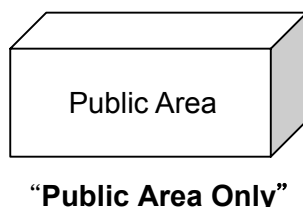
You must install the **U-Storage Tool** found on the Driver CD to enable the Security Function. Before installing the **U-Storage Tool**, ensure that the Write-Protect switch is set to Unlocked “” and carefully read the following sections.

Partition Types

U-Storage Tool can be used to partition **JetFlash** into two partition types. Before partitioning, you need to understand the following terms and concepts.

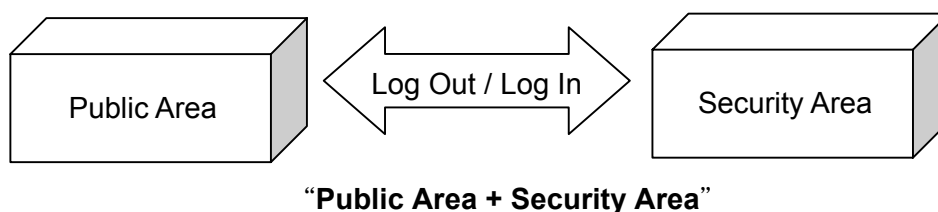
Type 1: “Public Area Only”

This is the default partition type for **JetFlash**. It allows the entire volume of **JetFlash** memory to be accessed by anyone. No secure data area is established.



Type 2: “Public Area + Security Area”

JetFlash is partitioned into a single Logical Unit Number (LUN) identified device, which contains a **Public Area** and a **Security Area**. Secure data can be established in the **Security Area**, which is protected by password. Access to data in the **Public Area** is unrestricted.








- ❖ Only one data area can be seen at a time. You must “Log In” by entering the correct password to access data in the **Security Area**. You switch from **Security Area** to **Public Area** by using “Log Out.”

Security Function for Windows 98/98SE, Me, 2000, and XP


The default configuration of **JetFlash** is “**Public Area Only**” . To establish a **Security Area** on **JetFlash**, follow the procedures below to partition **JetFlash** as “**Public Area + Security Area**” .

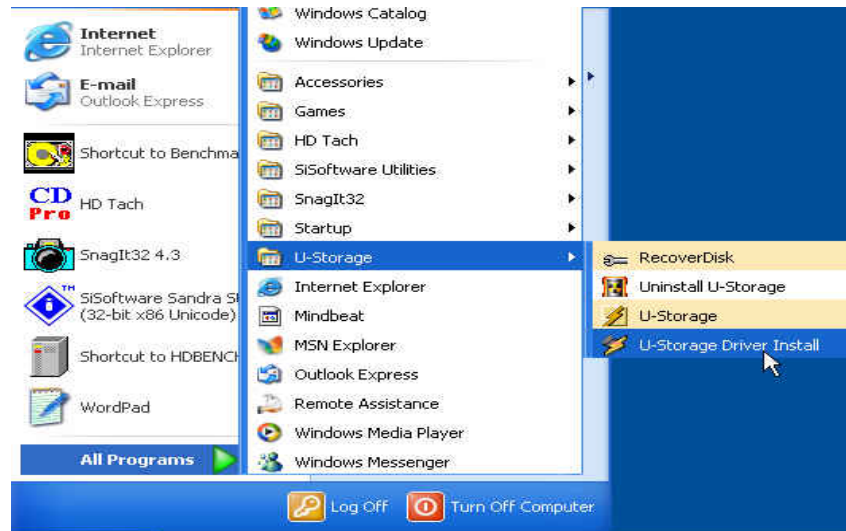
1. Put the Driver CD into the CD-ROM drive (Auto-Run supported). Click the **U-Storage Tool** button.






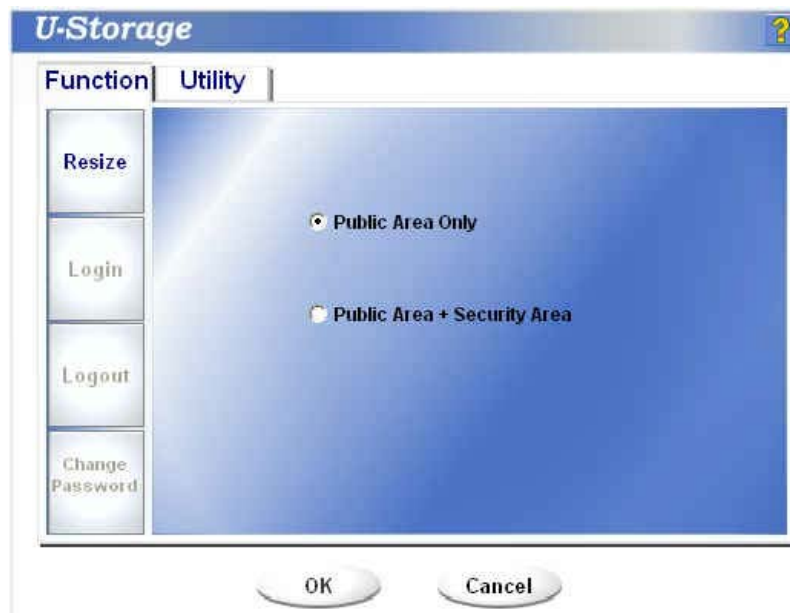
- ❖ When using Windows 2000 or XP, you must plug **JetFlash** into an available USB port before clicking the **U-Storage Tool** button.
 - ❖ When using Windows 98/98SE, the Win98 Driver will be uninstalled after clicking the **U-Storage Tool** button. Follow the on-screen instructions to uninstall the Win98 Driver.
2. Follow the on-screen instructions to complete the **U-Storage Tool** installation.
 3. Plug **JetFlash** into an available USB port of your computer. A  or  icon will appear on the Windows system tray.
 - ❖ If a  or  icon does not appear, remove **JetFlash** and plug it in again.
 - ❖ If a  icon appears in the Windows system tray, follow the steps below to reinstall

the Driver for **JetFlash**.

- i. Click the  button on the task bar and select **Programs > U-Storage > U-Storage Driver Install**.



- ii. Follow the on-screen instructions to reinstall the driver for **JetFlash**.
4. Backup the data on your **JetFlash**. Make sure the Write-Protect switch is set to the  position.
 5. Double-click on  or  in the system tray. The **U-Storage** window appears.

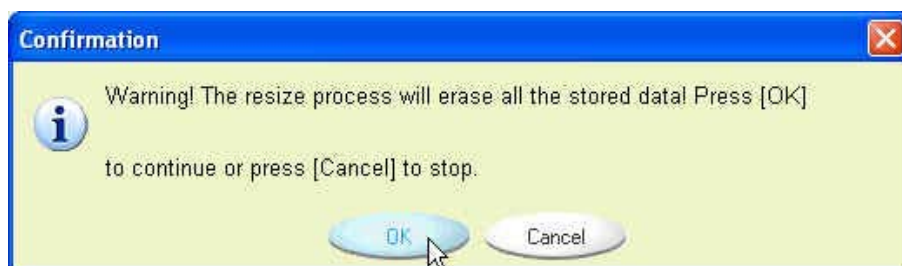


6. Select the partition type you need.
 - a. To partition your **JetFlash** to the default type, i.e., "**Public Area Only**", select **Public Area Only** and click **OK**.

- b. To partition your **JetFlash** to “**Public Area + Security Area**”, select **Public Area + Security Area** and click **OK**. The following window appears.



- i. **Drag** the horizontal slider to set the memory sizes to be apportioned to the **Public Area** and **Security Area**.
 - ii. Key in a **New Password**. (Maximum size for password is 8 characters.)
 - iii. Key in a **Password Hint**, if you want to set up a reminder for your new password.
 - iv. Click **OK**.
7. The **Confirmation** window appears to remind you to back up all the data on your **JetFlash**. Click **OK** to continue or **Cancel** to stop.




8. Once the partition is finished, the **Resize information** window appears. Click **OK**.



Access Data in Security Area

1. Plug in **JetFlash** and the **U-Storage** window appears.



- ❖ To prevent the **U-Storage** window from coming up again, select **Don't pop up this window automatically next time**. After selecting this box, you can display this window in the future only by double-clicking the  icon in the system tray.

2. Enter the correct password and click **OK**.

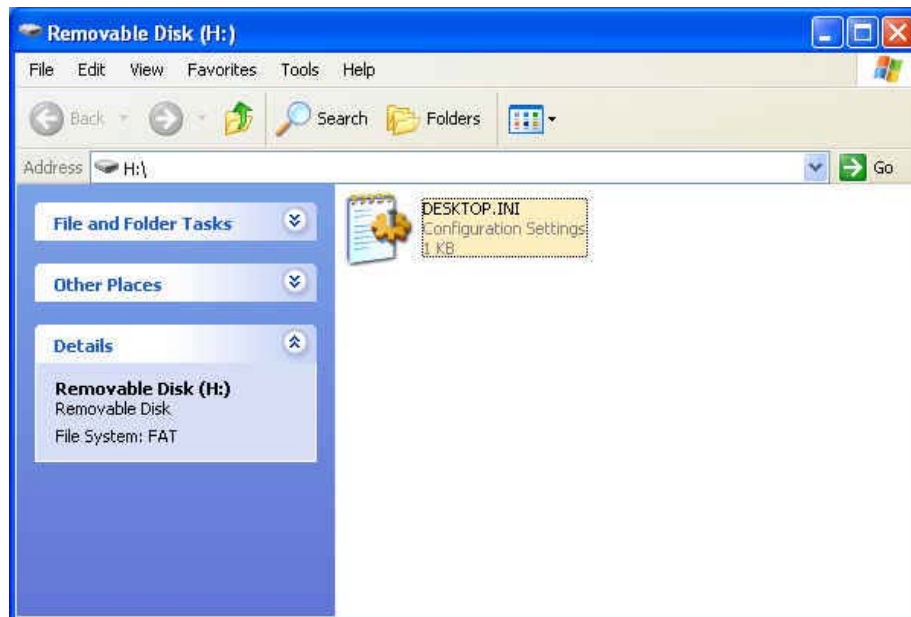


- ❖ To access the data in the **Public Area**, click **Cancel**.
- ❖ If a **Password Hint** was set up during the partition procedure, you can click on the **Hint** button to display your **Password Hint** to help you to remember the password.
- ❖ You are allowed three tries to input the correct password. After three wrong tries, the following message appears. Unplug **JetFlash** and plug it in again to be allowed three more tries to input the correct password to unlock the restricted data in the **Security**


Area.

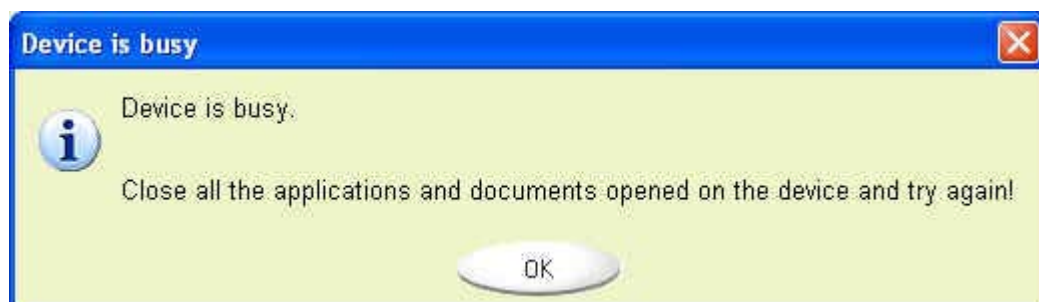


3. The **Removable Disk** window appears. The **Security Area** is ready for use.



Log Out of Security Area


1. Make sure that no file is open and that no data are being transferred to or from your **JetFlash**.
 - ❖ In Windows 2000, the **File Manager** must be closed.
2. Double-click on the  icon in the system tray.
 - ❖ If there is a file open or if data are being transferred to or from your **JetFlash**, the following message appears.



3. Clicking the **OK** button lets you **Log Out** of the **Security Area** of **JetFlash**. Once you

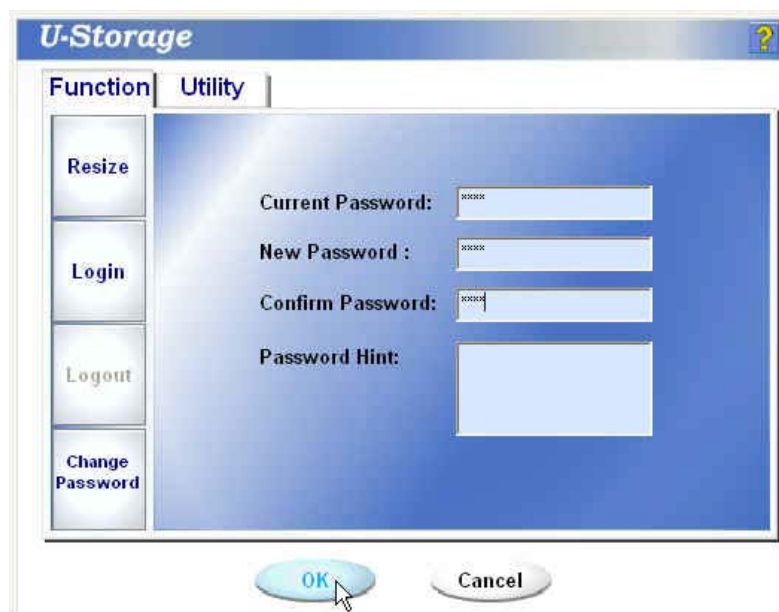
have successfully completed **Log Out**, only data in the **Public Area** are accessible.

Change Password

1. Double-click on the  icon in the system tray.
2. The **U-Storage** window appears. Click on the **Change Password** button.



3. Key in the **Current Password** and enter the new password in both the **New Password** and the **Confirm Password** fields. (Maximum size for a password is 8 characters.)



4. Key in a **Password Hint** if you want to set up a reminder for your new password.
5. Click **OK**. The **Password change information** window appears.



6. Click **OK** to close this window.

If You Forget the Password

When you forget the password, all you can to use **JetFlash** again is run the **U-Storage Tool** to repartition **JetFlash**. Unfortunately, all data on **JetFlash** will be lost during this procedure.

Boot-Up Function

For systems that use Windows 98/98SE, Me, or XP, **JetFlash** can be configured to serve as an MS-DOS Boot Disk. Upon completion of this procedure, **JetFlash** can be used to boot-up your computer, allowing you to run MS-DOS programs. This does not make **JetFlash** a Rescue Disk for Windows, nor does it put Windows Startup files onto **JetFlash**. After booting with **JetFlash**, if you wish to enter Windows, you must then start Windows from your hard drive or a previously created Rescue Disk.

❖ The boot-up function is not supported in Windows 2000.

System Requirements for Boot-up Function






- A desktop or notebook computer that supports **USB-ZIP** or **USB-HDD** as the **First Boot Device** in **BIOS**
- **Windows 98/98SE, Me, or XP** located on drive C
- Any anti-virus program present must be turned off

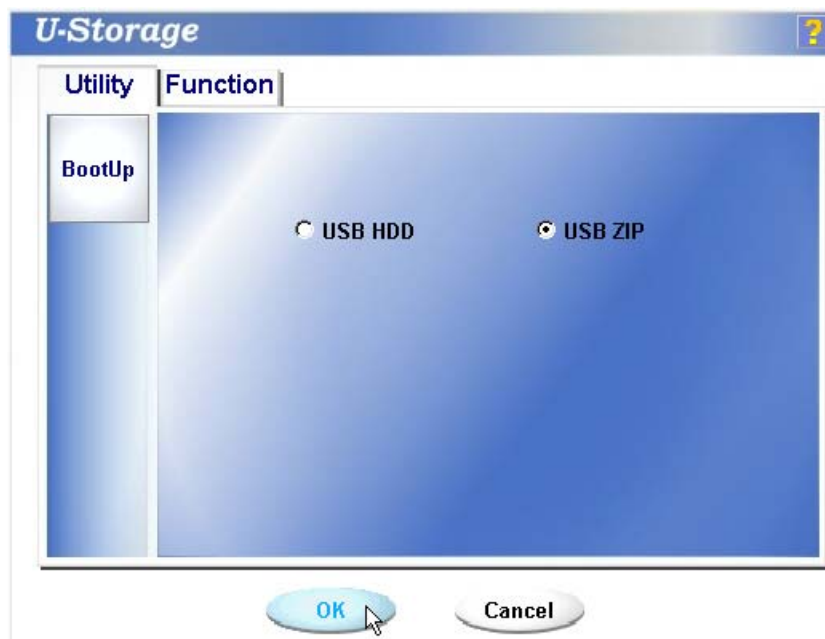
Boot-Up Function for Windows 98/98SE and Me

❖ Skip steps 1-2 if the **U-Storage Tool** has already been installed.

1. Put the Driver CD into the CD-ROM drive (Auto-Run supported). Click the **U-Storage Tool** button.

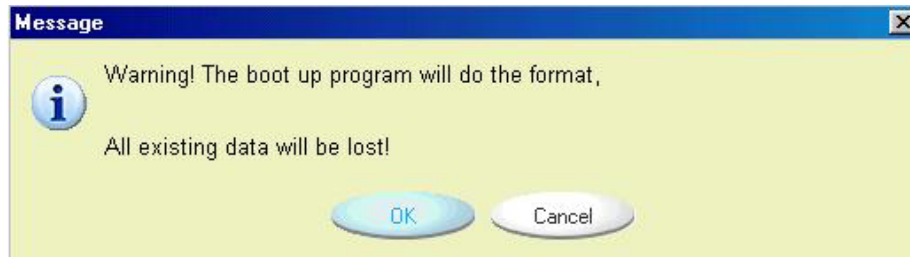


2. Follow the on-screen instructions to complete **U-Storage Tool** installation.
3. Plug **JetFlash** into an available USB port of your computer. A  or  icon will appear in the Windows system tray.
4. Perform a backup of the data on your **JetFlash**. Make sure the Write-Protect switch is set to the  position.
5. Double-click on the  or  icon in the system tray, and the **U-Storage** window appears. Click on the **Utility** tab.

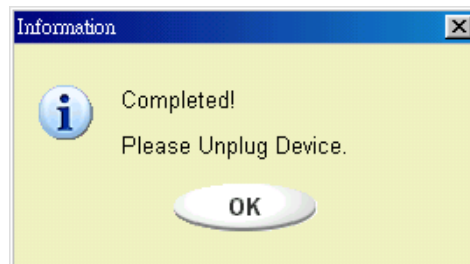


6. Select the boot-up type you need (**USB HDD** or **USB ZIP**, whichever has been set as the **First Boot Device** in **BIOS**) and click **OK**.

- ❖ **USB HDD** option is only supported for the partition type of “**Public Area Only**” in **Windows 98/98SE**. To keep the **Security Function** in Windows, you can only select **USB ZIP** as the boot-up type.
7. The **Warning** message appears. Be sure you have made a backup of all the files on your **JetFlash**. Click **OK** to continue or **Cancel** to exit.



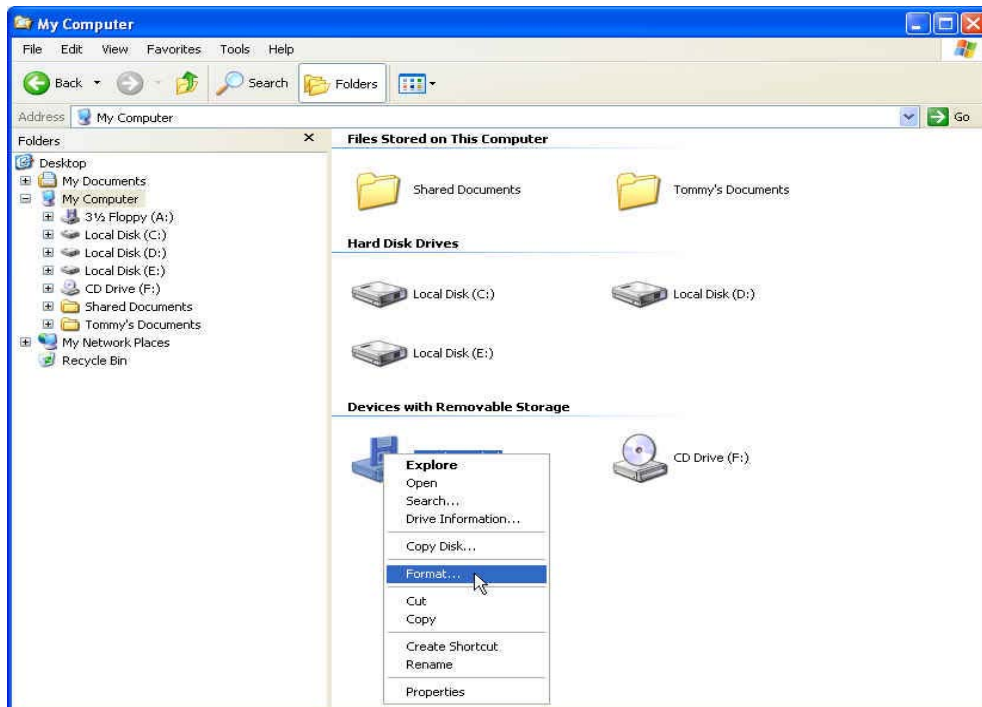
8. The **Completed** alert box appears. **JetFlash** is now ready for use as an MS-DOS Boot Disk. Click **OK** to close the window.



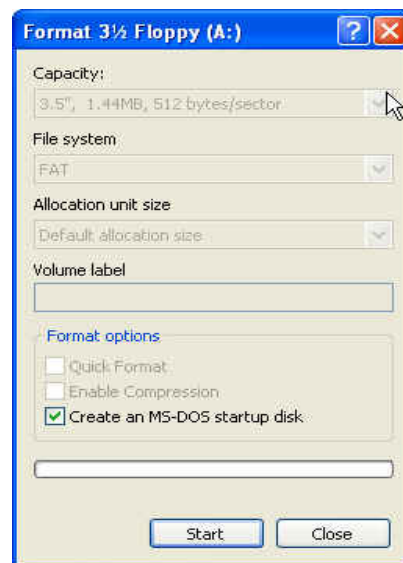
- ❖ When you have completed this process, **JetFlash** will contain the files needed to use the Boot-up function. Do not remove any of these files, or boot-up using **JetFlash** will fail.
- ❖ If **USB HDD** was selected, the **C:\>** prompt will appear after using **JetFlash** to boot up. If **USB ZIP** was selected, the screen will show the **A:\>** prompt.

Boot-Up Function for Windows XP

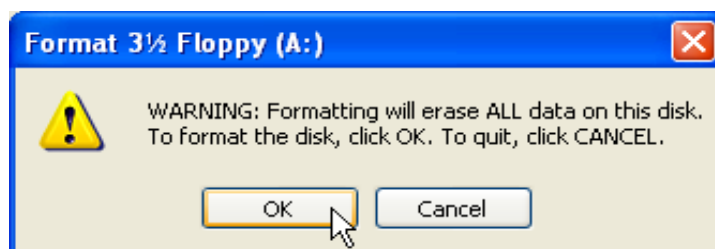
1. Insert a **new** floppy disk into the Floppy Disk Drive (A:). Go to the **My Computer** window and right click on the **Floppy Disk (A:)** icon. Select **Format...** from the pull-down menu.



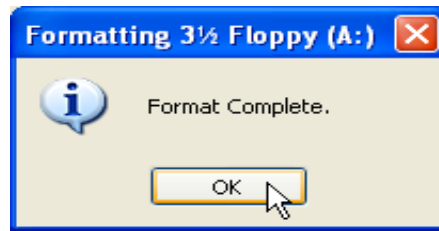
2. Select **Create an MS-DOS Startup Disk** then click **Start**.



3. Click **OK**.








4. Click **OK** to complete the format.

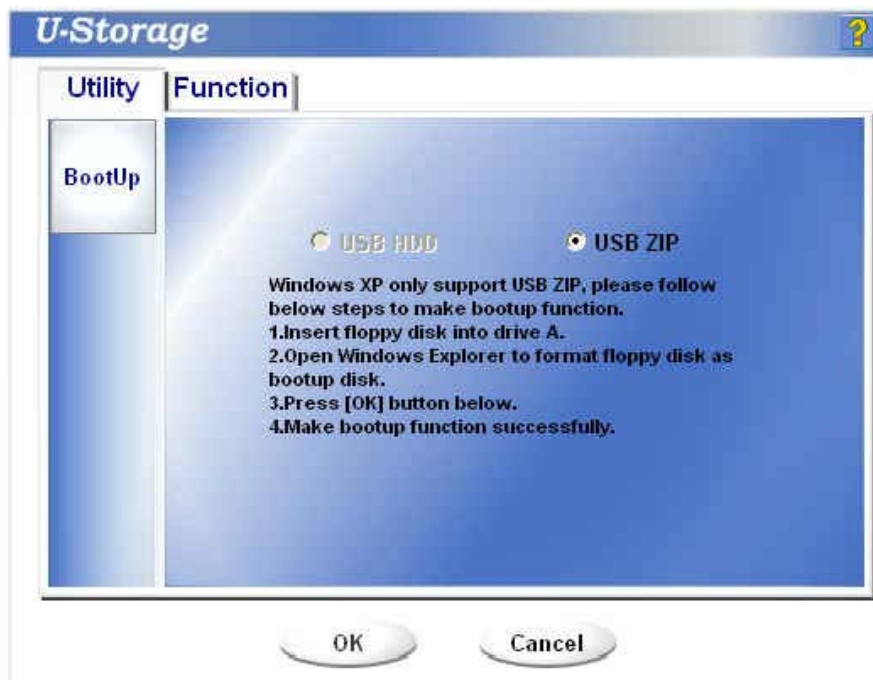


❖ Skip steps 5-6 if the **U-Storage Tool** has already been installed.

5. Put the Driver CD into the CD-ROM drive (Auto-Run supported). Click the **U-Storage Tool** button.

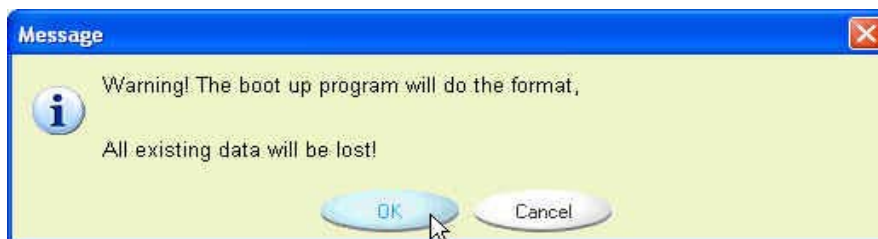


6. Follow the on-screen instructions to complete **U-Storage Tool** installation.
7. Plug **JetFlash** into an available USB port of your computer, and a  or  icon appears in the Windows system tray.
8. Perform a backup of the data on your **JetFlash**. Make sure the Write-Protect switch is set in the  position
9. Double-click on the  or  icon in the system tray, and the **U-Storage** window appears. Click on the **Utility** tab.



10. Select **USB ZIP** and Click **OK**.

11. The **Warning** message appears. Be sure you have made a backup of all the files on your **JetFlash**. Click **OK** to continue or **Cancel** to exit.

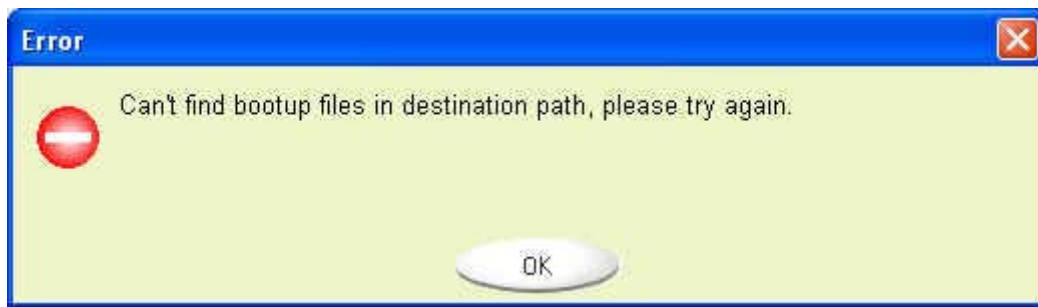


12. The **Completed** alert box appears. **JetFlash** is now ready for use as an MS-DOS Boot Disk. Click **OK** to close the window.

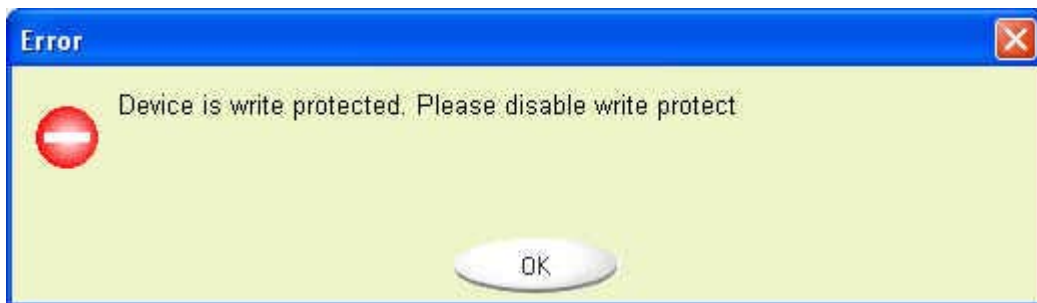


- ❖ When you have completed this process, JetFlash will contain the files needed to use the Boot-up function. Do not remove any of these files, or boot-up using **JetFlash** will fail.

Error Messages of Boot-Up Function



The initialization of the Boot-up Function or installation of the OS is probably incomplete. Please make sure that the path **C:\WINDOWS\COMMAND\EBD** exists in Windows 98/98SE, Me or XP. If yes, return to step 1 to re-initialize the Boot-up Function. If this fails, the Boot-up Function does not support your computer.




The Write-Protect switch is set to Locked (🔒). Please reset the Write-Protect switch to Unlocked (🔓).

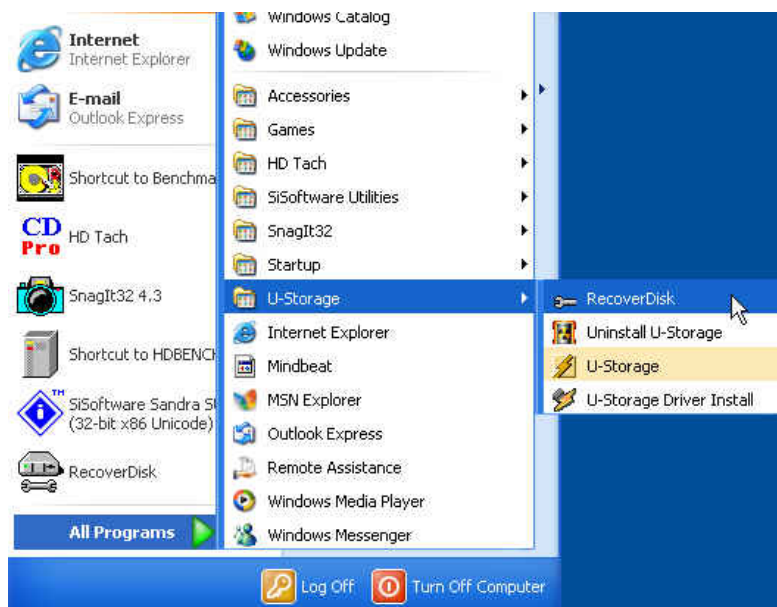
Recovery Function

If your **JetFlash** is ever damaged, you can use the **RecoverDisk** program to restore its default settings.

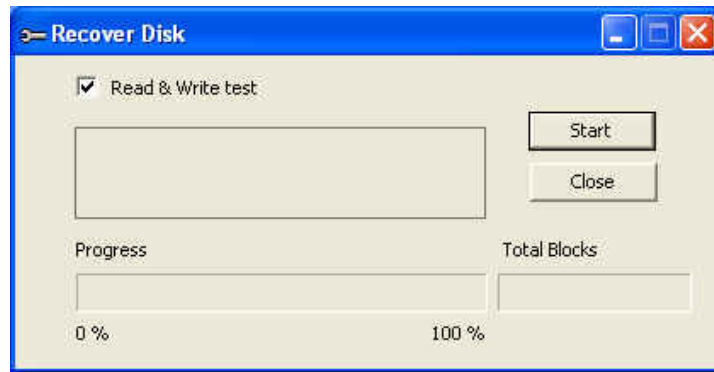
- ❖ Running the **RecoverDisk** program will erase all the data on JetFlash.
 - ❖ If there are bad blocks in the flash memory chip of **JetFlash**, the memory size of **JetFlash** after running the **RecoverDisk** program will be smaller than the original memory size.
 - ❖ Skip steps 1-2 if the **U-Storage Tool** has already been installed.
1. Put the Driver CD into the CD-ROM drive (Auto-Run supported). Click the **U-Storage Tool** button.



2. Follow the on-screen instructions to complete **U-Storage Tool** installation.
3. Plug **JetFlash** into an available USB port of your computer.
4. Click the  button on the task bar and select **Programs > U-Storage > RecoverDisk** to run the **RecoverDisk** program.



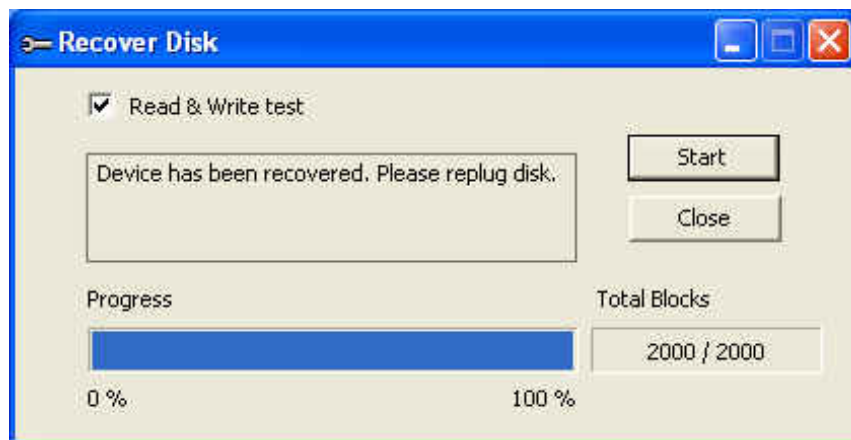
- ❖ **RecoverDisk** performs a low-level format on your **JetFlash**, erasing all data and returning **JetFlash** to the default configuration.
5. Check the **Read & Write test box**, and then click **Start** to initiate the low-level format.




6. Click **YES** if you want to recover your **JetFlash**.

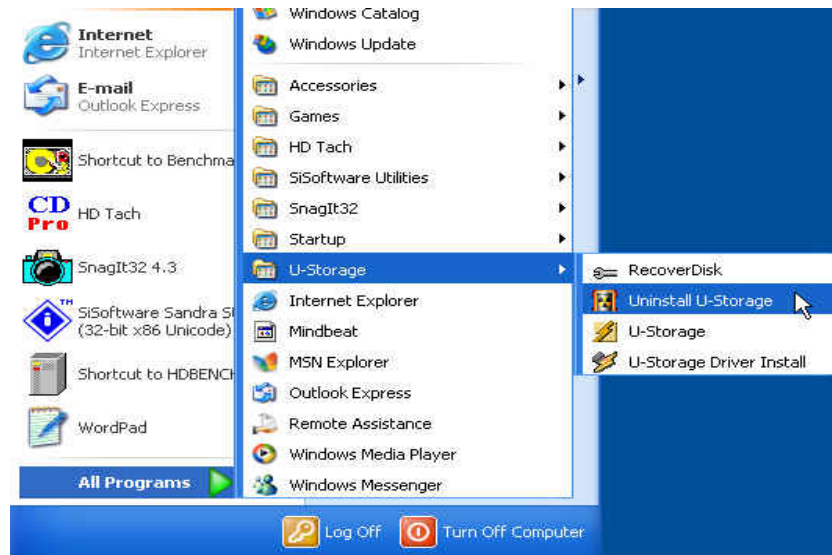


7. When finished, the following status message appears. Click **Close** and unplug your **JetFlash**. Plug it in again to continue to use it.



Uninstall the U-Storage Tool

1. Click the  button on the Task Bar and select **Programs > U-Storage > Uninstall U-Storage**.



2. Follow the on-screen instructions to uninstall the **U-Storage Tool**.

Specifications

- Size: 75mm x 22mm x 10mm (Mini Size)
88mm x 29mm x 12mm (Normal Size)
- Weight: 11 g (Mini Size)
22 g (Normal Size)
- Data Retention: Up to 10 years
- Erase Cycles: > 100,000 times
- Speed: Read 8.0 MB/sec (Max. for 128MB-4GB)
Write 7.0 MB/sec (Max. for 128MB-4GB)
- Certificates: CE, FCC, BSMI

Ordering Information

<u>Transcend P/N</u>	<u>Memory Size</u>	<u>Features</u>
TS32MJF2B	32MB	Blue, Mini Size
TS64MJF2B	64MB	Blue, Mini Size
TS64MJF2L	64MB	Lilac, Mini Size
TS128MJF2B	128MB	Blue, Mini Size
TS128MJF2L	128MB	Lilac, Mini Size
TS256MJF2B	256MB	Blue, Mini Size
TS256MJF2L	256MB	Lilac, Mini Size
TS512MJF2B	512MB	Blue, Mini Size
TS512MJF2L	512MB	Lilac, Mini Size
TS1GJF2B	1GB	Blue, Mini Size
TS2GJF2B	2GB	Blue, Mini Size
TS4GJF2C	4GB	Champagne, Normal Size

JetFlash Limited Warranty

“Above and beyond” is the standard we set for ourselves for customer service at Transcend. We consistently position ourselves to be significantly above the industry norm. It’s all part of our commitment to Customer Satisfaction.

All Transcend Information, Inc. (Transcend) products are warranted and tested to be free from defects in material and workmanship and to conform to the published specifications. Should your Transcend JetFlash malfunction during normal use in its recommended environment due to improper workmanship or materials within the warranty period, Transcend will repair or replace your product with a comparable product. This warranty is subject to the conditions and limitations set forth herein.

Duration of Warranty: Transcend JetFlash is covered by this warranty for a period of two (2) years from the date of purchase. Transcend will inspect the product and make the determination as to whether the product is eligible for repair or replacement. The decision by Transcend regarding eligibility of the product for repair or replacement will be final and binding. Transcend reserves the right to provide a functionally equivalent, refurbished replacement product.

Limitations: This warranty does not apply to products that fail due to accident, abuse, mishandling, improper installation, alteration, acts of nature, improper usage, or problems with electrical power. Transcend JetFlash must be used with devices that conform to the recommended industry standards. Transcend will not be liable for damages resulting from a third-party device that causes the Transcend product to fail. Transcend shall in no event be liable for any consequential, indirect, or incidental damages, lost profits, lost business investments, lost goodwill, or interference with business relationships as a result of lost data. Transcend is also not responsible for damage or failure of any third-party equipment, even if Transcend has been advised of the possibility. This limitation does not apply to the extent that it is illegal or unenforceable under applicable law.

Disclaimer: The foregoing limited warranty is exclusive, with no other warranties, implied or statutory, including but not limited to any implied warranty of merchantability or fitness for a particular purpose. This warranty is not affected in any part by Transcend’s providing technical support or advice.

Online Registration: To expedite warranty service, please register your Transcend Product within 30 days of purchase.

Register online at <http://www.transcendusa.com/registration>.

Transcend

*Your Supplier, Your Partner,
Your Friend.*

Transcend Information, Inc.

www.transcendusa.com

The Transcend logo is a registered trademark of Transcend Information, Inc.

*All logos and marks are trademarks of their respective companies.