

Canon Video Lens:

True Clarity

Renowned for high quality professional optics, the DC10/20 Photo DVs' new optical design utilize 2 aspherical lenses that are coated with super spectral finish. This helps to reduce flare and ghosting while the gradation ND system prevents reduction in resolution caused by light defraction. Your image is captured with superb definition and contrast, capable even in low light.



RGB Primary Color Filter

The DC 20 Photo DV is equipped with an RGB Primary Color Filter, the same color filtration used in a professional 3 CCD camcorder. This produces accurate and true-to-life color reproduction, making your videos and stills richer and more vibrant.



10x Optical Zoom

It's superb picture quality anywhere you go! Along with the 10x optical zoom lens that deliver superb definition and contrast, these compact and highly efficient lens give you greater optical performance. The built-in Electronic Image Stabilizer (Movie mode only) gives you the added control to stabilize images even when it's the zooming or panning of your pictures.

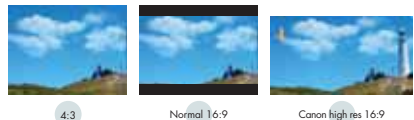


10x
Optical Zoom

40x/200x
Digital Zoom
(Movie Mode - Selectable)

High Resolution 16:9 Mode

Create a theatre-like experience in your own living room with Canon High Resolution 16:9 widescreen. Optimized for widescreen television, each data captured maximizes the entire width of the CCD, producing crisp, high-resolution images.



DVD (Videos & Stills) Recording

DC10/20 Photo DVs comprise of two movie-recording functions - DVD Video Recording (VR Mode) that provides video editing functionality and DVD Video (Video Mode) allows compatibility with all video players. For movie recording, its video compression method adopts MPEG2 type, whilst for still images recording, its compression method adopts JPEG type, thus maximizing video quality on TV and still images for print or computer display.

Easy Access

With DC10/20 Photo DVs, their DVD recording systems allow quick and random access to shooting. There's no need for fast-forwarding or rewinding to begin recording as footage is automatically recorded on blank space. There's no need to worry of over-writing the video data as the footage is displayed for selection on VISUAL INDEX, which is available on selection of Movie Play Mode. Play the footage you want to see with ease with various RR/FW speeds (1.5x/2x/4x/8x)

Easy Editing

Editing is now a breeze with Play List. Select your favorite footage or still images and place on Play List, allowing you to change order or divide footage whilst retaining original footage and images. Even when you are recording, you can even do an On-the-Spot editing, allowing you to freely divide and delete original footage on the DVD camcorder.



Easy Play

Canon's DVD R/RW system allows compatibility with most DVD home players. You can easily play your finalised footage with your DVD player and create an instant slide-show for still images on TV with ease. You can even make selection with the footage you want to see with your customized Index. With the built-in Quick Finalising button, your DVDs are finalized at greater speeds and efficacy.

Easy Share with Bundled Software

Canon makes sharing your videos and still images easier with the bundled 'Roxio My DVD' application. Along with the Photo DVD Authoring Function, you can enjoy making your own DVD movies!

What's more, for greater convenience, footage recorded can be downloaded conveniently in three different ways -

- 1 A one-touch customised function dubbing from the Photo DV to PC
- 2 Burn DVDs using the Photo DV directly or use the PC to read unfinalized DVDs.
- 3 Play direct on any DVD player with finalized DVD from the camcorder.



Specifications

System	DC10	DC20
Type	DVD Video Camera	
DVD Recording Specifications	Movie: Either DVD-Video Recording (VR mode) or DVD-VIDEO (VIDEO mode). DVD-R discs support DVD-VIDEO only. Movie compression method: MPEG2. Audio compression method: Dolby Digital 2ch (Ac-3/2ch) / sampling frequency 48 kHz. Still image: Complies with Exif Ver 2.2 (disc does not support DPOF). Compression method: JPEG Type	
Scanning System	625 lines, 50 fields/25 frames, PAL color signal	
Audio	Dolby Digital (2 channels)	
Recordable Discs	8cm DVD-R/RW discs (double-sided type: 2.8 GB / single-sided type: 1.4 GB) <small>* After shooting is completed for one side of the double-sided DVD, it is turned over and used.</small>	
DISC Recording Time	Single sided: 1.4GB XP: 20 min/Approx. 9 Mbps (VBR), SP: 30 min/Approx. 6 Mbps (VBR), LP: 60 min/Approx. 3 Mbps (VBR) (Double sided: 2.8 GB XP: 40 min/Approx. 9 Mbps (VBR), SP: 60 min/Approx. 6 Mbps (VBR), LP: 120 min/Approx. 3 Mbps (VBR) * Still - Variable Bit Rate	
Image Sensor	1/4-inch interlaced CCD (color correction filter), Approx. 1.33 megapixels	1/3-inch interlaced CCD (RGB Primary Color Filter), Approx. 2.20 megapixels
LCD monitor	2.5-inch TFT color, approx. 113,000 pixels	
Viewfinder	0.33-inch TFT color, approx. 113,000 pixels	
Lens	Movie: Optical 10x Zoom / Still: Optical 10x Zoom	
Lens configuration	11 elements in 9 groups	
Filter diameter	27 mm P=0.5	
Image Stabilization	Electronic	
AF System	9-point AIAF (still image only)	
White Balance	Auto white balance, Daylight, Shade, Cloudy, Tungsten, Fluorescent, Fluorescent H	
Inbuilt Flash	NI / Lightguide flash	
White LED	NI / Mini video light	
Minimum illumination	Approx. 0.5 lx (during the Night Mode) / Approx. 1.3 lx (during the Night Mode)	
Maximum Shutter Speed (Tv Mode)	1/2000 (1/500 in CARD CAMERA mode)	
Recording Specifications		
Recording Media (Card/Disc)	miniSD™ card / 8 cm DVD-R/RW	
File Format	Design Rule for Camera File System (DCF), Exif 2.2 compliant, Digital Print Order Format (DPOF) compliant	
Image Recording Format	Still image: JPEG Type compression (Superfine/Fine /Normal)	
DISC Recording Format	DVD-R/RW	
DISC Recording (Single-sided disc)	Still image recording: 1632 x 1224 pixels (DC20 only); Superfine 1025/1045 (VIDEO/VR Mode) images / Fine 1585/1615 (VIDEO/VR Mode) images / Normal 2010/2060 (VIDEO/VR Mode) images. 1280 x 960 pixels (DC10 & DC20); Superfine 1630/1660 (VIDEO/VR Mode) images / Fine 2495/2540 (VIDEO/VR Mode) images / Normal 4295/4675 (VIDEO/VR Mode) images. 640 x 480 pixels (DC10 & DC20); Superfine 7945/8085 (VIDEO/VR Mode) images / Fine 9999/11860* (VIDEO/VR Mode) images / Normal 9999/119765* (VIDEO/VR Mode) images. <small>* The actual number of recordable images depends on the usage (subject and shooting conditions). The number of images can be recorded on a double-sided disc is twice that of a single-sided disc. * The maximum display is 9999.</small>	
miniSD™ card (16MB) Recording	Still image recording: 1632 x 1224 pixels (DC20 only); Superfine 9 images / Fine 14 images / Normal 23 images. 1280 x 960 pixels (DC10 & DC20); Superfine 15 images / Fine 20 images / Normal 40 images. 640 x 480 pixels (DC10 & DC20); Superfine 75 images / Fine 105 images / Normal 170 images. <small>The actual number of recordable images depends on the usage (subject and shooting conditions). Sample images recorded on the supplied miniSD™ card are to be included in the total number.</small>	
I/O terminals (level/impedance)		
AV Terminal	Multi Cable MTC-100 (output only)	
DV terminal	None	
Microphone Terminal	None	
Headphone terminal	None	
Power, etc.		
Power supply (rated)	7.4 V DC (Battery Pack)	
Operating Temperature	0-40°C	
USB Terminal	USB 2.0 High Speed	
USB (Direct Print)	PictBridge supported only	
Dimensions (WxHxD)	Approx. 48 x 86 x 122 mm	
Weight (body only)	Approx. 415g	

This mark identifies genuine Canon video accessories. When you use Canon video equipment, we recommend Canon-brand accessories or products bearing the same mark.



SOUTH & SOUTHEAST ASIA REGIONAL HEADQUARTER
CANON SINGAPORE PTE. LTD.
1 HarbourFront Avenue, #04-01 Keppel Bay Tower, Singapore 098632
<http://www.canon-asia.com>

System Requirements for Supplied Software

System	DC10	DC20
Computer Type	IBM PC/AT compatible or NEC PC98NX series (Japan only)	
OS	Windows 98 Second Edition, Windows Me, Windows 2000 Service Pack 4, Windows XP (including Service Pack 1 & Service Pack 2)	
CPU	Pentium 500 MHz or faster	
RAM	128 MB or more (Windows 98 SE/Me) 256 MB or more (Windows 2000/XP)	
USB Interface	Guaranteed only for computer preinstalled	
Available Hard Disk Space	ZoomBrowser EX/PhotoRecorder: 250 MB or more; PhotoStitch: 40 MB or more; TWAIN Driver: 25 MB or more; VIA Driver: 25 MB or more	
Display	1024 x 768 pixels, High Color (16 bit) or higher	
Miscellaneous	Apple QuickTime 6.5 is required for movie playback and saving and saving and playback in QTVR format.	
Macintosh		
Computer Type	Power Macintosh, PowerBook, iMac, iBook	
OS	From Mac OS 10.1.5 to 10.3 *iFS (iMac File System) is not supported	
CPU	PowerPC G3, G4, G5	
RAM	256 MB or more	
USB Interface	Guaranteed only for computers preinstalled	
Available Hard Disk Space	ImageBrowser: 200 MB or more; PhotoStitch: 40 MB or more	
Display	1024 x 768 pixels, 32,000 colors or higher	

- To use DV Messenger, it is required that Windows Messenger 4.5/4.6/4.7 operates correctly.
- It is required that Windows Messenger operates and the voice or video conversation can be used with a digital camcorder. Please consult Microsoft for details.
- If you are using a router, make sure it is an UPL (Universal Plug and Play) compatible router. For details, consult your internet service provider, telephone carrier, or refer to the manual of the router.
- We recommend using a broadband internet connection.
- The communication quality and connectivity depend on the congestion of the internet line and service.
- This product does not guarantee a certain communication quality.

Supplied Accessories



- DC10/20 Body
- Battery Pack (BP-20B)
- Compact Power Adapter (CA-570)
- Multi-AV Cable (MTC-100)
- Wireless Controller (WL-D86)
- USB Cable (IFC-300PCU)
- AC Cable
- Digital Video Solution Disks for Windows & Macintosh
- DVD-R Disc
- My DVD Software

Optional Accessories



DVD R/RW is a trademark of DVD Format / Logo Licensing Corporation.

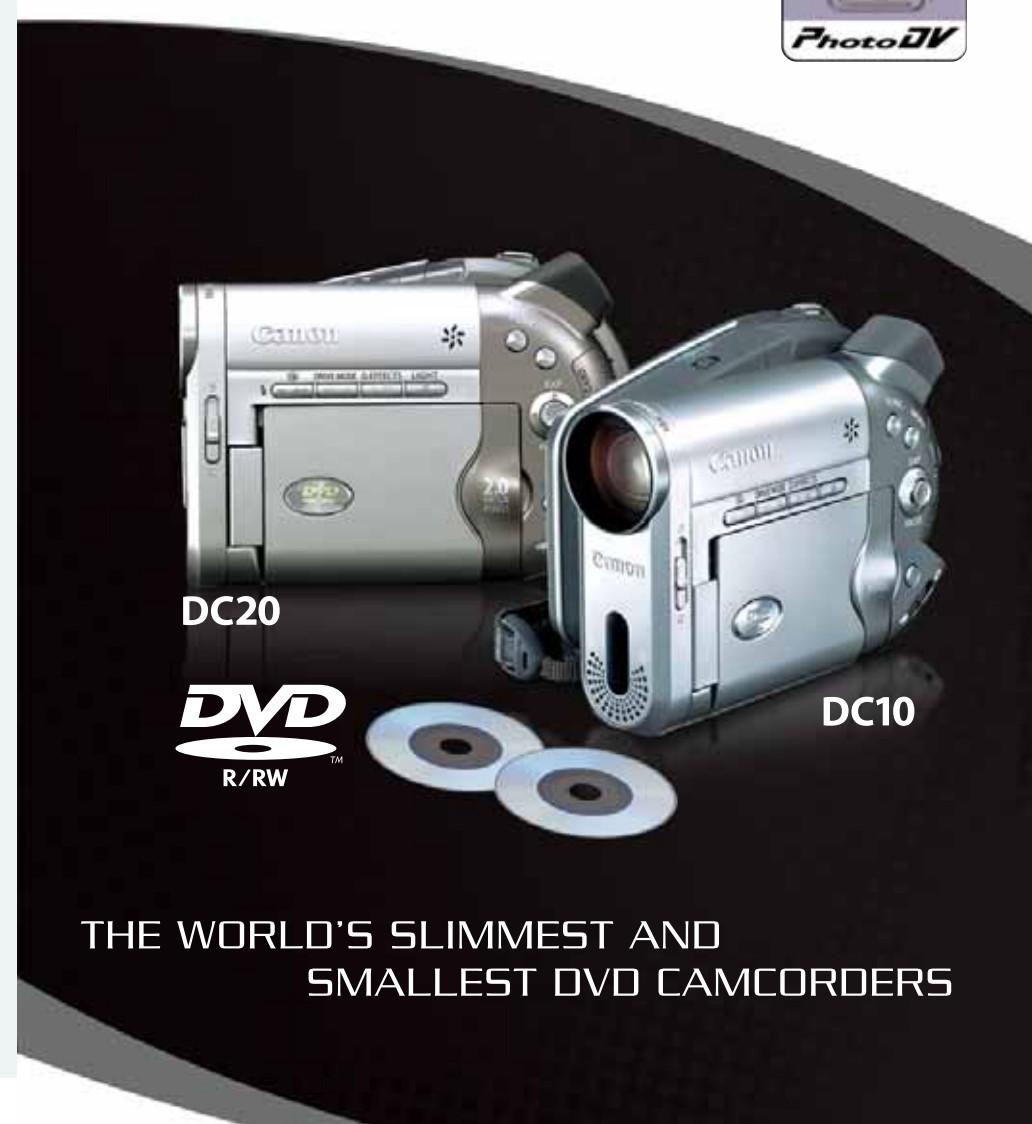
*Dolby® and the double D symbol are trademarks of Dolby Laboratories.

Errors and omissions excepted. Weight and dimensions are approximate. Subject to change without notice. Macintosh is a trademark of Apple Computer Inc., registered in the United States and other countries. Microsoft and Windows® are either registered trademarks or trademarks of Microsoft Corporation in the United States and/or other countries. Other names and products not mentioned above may be registered trademarks of their respective companies. SD logo is a trademark. Canon is a registered trademark of Canon Inc.

Warning: Unauthorized recording of copyrighted materials may infringe on the rights of copyright owners and be contrary to copyright laws.

0054AV421

Canon
Delighting You Always



THE WORLD'S SLIMMEST AND
SMALLEST DVD CAMCORDERS



World's Slimmest and Smallest DVD Camcorders

The new Canon DC10/20 Photo DVs introduce futuristic sleekness and ultra-slim form to its DVD Camcorder, offering the convenience of DVD recording format and synergy of Canon's supreme imaging technology like no other. It simply gives you the power to capture brilliant movies and stills with Photo DV advanced functions combined with the capabilities of DVD. It's convenience at your fingertips with Canon DC10/20 Photo DVs.



Exquisite Space Age Design

As the world's slimmest and smallest DVD camcorders*, Canon DC10/20 Photo DVs give you ultra portability and compactness with the latest design. Featuring 'space age' lines that adorn its exterior along with an aluminium-built body, it is a feel that is reassuringly tough. What's more, its brilliance in style and uncluttered appearance is enhanced with a 2.5-inch anti-reflective coated colour LCD monitor, a built-in lens cover that retracts smartly into the camcorder body and user-friendly control functions that are designed with one-touch button access.

* In the megapixel class as of October 2005.

High Resolution Megapixel CCD

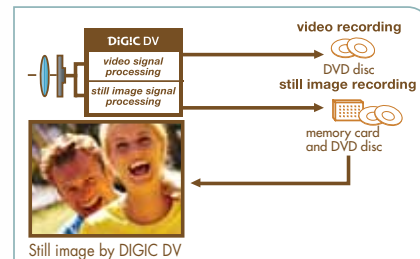
Stunning Videos and Stills Quality

With the 2.2 megapixel CCD (DC20) or 1.3 megapixel CCD (DC10), you'll now be able to capture images with higher resolution quality, enabling high quality stills and great movies. It's a characteristic truly of a Canon Photo DV! You'll marvel at its ability to produce finer details and sharpness in your photos and videos.

The DIGIC DV Imaging Processor:

Great Movies and Stills

Since videos and digital photos have unique color requirements, DIGIC DV utilizes two different color processing techniques to maximize video quality on a TV and still image quality for print or computer display.

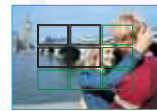


Canon DIGIC DV imaging processor first considers the format of the output, then processes the signal accordingly, resulting in high-quality videos and photos.

1st DVD Camcorder with Full Photo Function

9-Point AiAF

The nine point auto focus system (9-point AiAF), delivers fast, sharp results no matter where your subject appears in the frame.



When using 9-point range finding AiAF function (image Zone, Auto mode):

With the Image Zone, the 9-point range-finding AiAF and center range-finding frame AF functions can be selected.

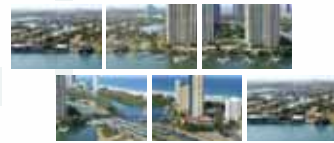
High-speed Continuous Shooting (Card Mode Only)



Enables high-speed or normal continuous shooting of up to 60 frame shots. Capture up to 2.5 (PAL)/3 (NTSC) frames per second in 1632 x 1224 resolution (DC20) or 4.2 (PAL)/5 (NTSC) frames per second in 1280 x 960 pixel resolution.

Stitch Assist (Card Mode Only)

By using the Stitch Assist mode, you can create magnificent panoramas. Shoot your landscape, and transfer them to your computer. Then simply select and arrange your images in the correct order, and the supplied PhotoStitch software does the rest, aligning, overlapping and cropping the separate images to form one ultra-wide panoramic still image.



Program Auto Exposure



Most of the time, you will find Auto Mode sufficient for most shooting conditions. But for more sophisticated shooting situations, the camcorder selects aperture and shutter speed but allows users to have control over other settings such as white balance and metering.

3 Position Slide Switch

It's fast and easy access with the 3 Position Slide Switch. Switch between Auto, Program and 8 Special Scene modes with ease, giving you more control when shooting.



Program (AV and TV) Mode

DC10/20 Photo DVs feature both Av (Aperture Priority) and Tv (Shutter Priority) modes to give the user more control when shooting. The Av mode allows the photographer to choose the aperture and shutter speeds will be automatically adjusted to yield the correct exposure. While the Tv mode enables the photographer to set the shutter speed, the Photo DVs will pick the aperture to give that perfect shot an optimal exposure.

8 Special Scene Modes

The Special Scene mode includes a selection of 8 modes for different shooting conditions:

- Fireworks** - Enables sharper shooting of fireworks displays.
- Sunset** - Restraints color scattering for more impact when shooting sunset scenes.
- Snow** - Enables shooting of people on snow-covered mountains without darkening or leaving a blue tint.
- Beach** - Enables shooting of people on beaches without darkening.
- Spotlight** - Enables sharper shooting of scenes lit by a spotlight or other light source.
- Portrait** - Defocus the background to set off the subject to be shot.
- Sport** - Shoot fast-moving subjects eg. tennis matches and golf etc.
- Night** - Subjects appear lighter in colour even at night time or when the scene is otherwise dark.

Image Settings

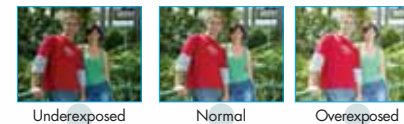
For greater creativity, you have a selection of modes using the FUNC button, to enable a variety of effects during recording: Vivid, Neutral, Low Sharpening, Soft Skin Detail or Custom.

White Balance Settings (Camera Mode Only)

To compensate various light environments, these modes are available for selection: Auto, Daylight, Shade, Cloudy, Tungsten, Fluorescent, Fluorescent H or Custom.

Auto Exposure Bracketting (Card Mode Only)

This feature allows you to record three photos (normal, underexposed and overexposed) simply by pressing the PHOTO button once.



Low Light Features



A selection of modes to enable you to shoot easily even at night. **Night Mode** selects the ideal shutter speed and sensitivity to help brighten the scene without sacrificing color. In the **Super Night Mode***, the built-in LED lamp automatically lights up responding to the brightness of the subject. With **Night Plus Mode***, the LED lamp can be turned on manually whenever required. Even in darkness, the built-in **Mini Video Light*** allows you to shoot up to approx. 1.5m away, with approximately 3x the brightness of conventional LED. What's more, with the **Light Guide Flash*** that automatically fires in low light and backlit conditions for proper exposure, it gives you added convenience under most shooting conditions. The **Light Guide Flash*** also features a built-in red eye reduction function. * Applicable to DC20 only.

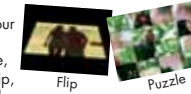


Digital Effects (Movie Mode Only)

Unleashed a wide selection of special effects and digital faders to enhance your images and create greater visual appeal.

Faders

Add a variety of transition to your movies with a fade to or from black. Choose from Auto Fade, Corner Wipe, Wipe, Jump, Flip, Puzzle, Zigzag, Beam and Tide.



Special Effects

For more creativity, you can switch on the following digital effects during recording or playback: Art, Black & White, Sepia, Mosaic, Ball, Cube, Wave, Color Mask or Mirror.



Multi-image Screen

You can divide your screen into 4 or 9 or 16 pictures with image capture function. You can choose the speed at which the images are captured: Manual, Slow, Moderate or Fast.



Recording Media

For your convenience, DC10/20 Photo DVs allow recording of video clips directly on DVD discs. In addition, the Photo DVs also enable user to record JPEG type images on both the miniSD™ card and DVD discs.



Printing

It's one touch convenience by the world's first Pictbridge compatible DVD camcorder. Get direct connectivity to any Pictbridge printer in just 3 steps - Connect, Push and Print with the Print/Share button, its simple!



Connectivity

USB 2.0 High Speed

The DC10/20 Photo DVs support USB 2.0 High Speed transfer for fast and easy transfer of full quality videos to a computer. Windows Movie Maker 2 and other video editing softwares support this interface. It also enables quick transfer of still images from miniSD™ card.

Windows XP & Mac Compatible

Whether your computer is running Window XP/Mac OS X, you can connect with confidence. Canon is the only camcorder manufacturer certified for use with both operating systems.

Exif Print

The DC10/20 Photo DVs support Exif Print (2.2), a worldwide standard that enhances communication between digital cameras and printers. At the time of shooting, vital camcorder settings and scene data are recorded with the image, resulting in realistic and reliable color reproduction. Poor lighting or mistakes can also be corrected, allowing photos to be even better than the originals.

Print/Share Button

The Print/Share button function makes it easy to print or download images with just a flick of a button. Simply connect the Photo DV to a Canon CP Compact Photo Printer, a Canon Bubble Jet Direct Photo Printer, or any PictBridge compliant printer. Or connect your Photo DV to your computer and with a single press, you can share photos with friends and family instantly.