

FS10

Flash Memory Camcorder

Item Code: 2686B001

Overview



From Canon's long history of optical excellence, advanced image processing, superb performance and technological innovation in photographic and broadcast television cameras comes the latest in camcorders.

Now, with the light, compact Canon FS10, you can have stunning video with the ease and numerous benefits of Flash Memory, at an affordable price. Flash Memory is used in some of the world's most innovative electronic products such as laptop computers, MP3 players, PDAs and cell phones. Canon offers the best in Flash Memory with Dual Flash Memory- record to both the camcorder's 8GB internal memory and a removable SDHC card, extending your available recording space and offering added flexibility in file transfer and playback. It's just the thing for catching more of your life's most special moments.

Add to that the FS10's Canon Exclusive features such as Canon 48x Advanced Zoom and our DIGIC DV II Image Processor, combined with a 1.07 Megapixel CCD image sensor, Image Stabilization and a 2.7" Widescreen LCD -- and you truly have a Flash Memory camcorder that's both hard to beat and unmistakably Canon.



IMAGE STABILIZER



DiG!C
DV II



MEGA PIXEL

Features

Flash Memory in a Compact Size

The FS10 is one of Canon's first and most affordable Flash Memory camcorders.

In addition to the advantage of added recording time, Flash Memory offers more to you as well. You'll appreciate its quick response time, because it doesn't have to wait for moving parts. Press the record button and your FS10 starts recording video faster than you've ever seen before. In addition, when you review your footage, it will start playing more quickly as well.



Another plus is the FS10's lower power consumption rate, allowing your battery to last longer. It's just what you need so you don't miss that pivotal play on the field or the moment when they say "I do".

While we certainly hope you keep your FS10 securely in your hand while shooting, if it happens to slip, or you accidentally knock it against something, you'll be happy to know that Flash Memory makes your camcorder more shock resistant than other recording storage systems. It also minimizes the chance of data loss due to damage to your recording media or the moving parts in other camcorders.

Making this new technology even more convenient to use is the FS10's compact size and light weight. Measuring only 2.3" wide, 2.4" high and 4.9" deep, it combines big video storage capacity in a small, easy to carry body.

A Class 2 or higher card is recommended. Also, movie recording requires cards with 128 MB of memory or more. Cards made by Toshiba, SanDisk or Matsushita are recommended. No particular restrictions apply for still images.

Dual Flash Memory: 8GB internal flash drive and SDHC card slot

What makes the FS10 stand out in the category of Flash Memory camcorders is its Dual Memory capability. You can capture video on both the camcorder's internal 8 GB Flash Memory as well as onto an SDHC Memory Card.



Video stored on the internal memory can also be copied onto the memory card which can then be inserted into your computer or television's card reader slot for immediate viewing. It is also possible to transfer still images recorded to the SDHC card to the internal memory.

Additionally, you can use higher capacity memory cards to further increase the video storage of your FS10. A Class 2 or higher card is recommended. Also, movie recording requires cards with 128 MB of memory or more. Cards made by Toshiba, SanDisk or Matsushita are recommended. No particular restrictions apply for still images.

Megapixel Performance



MEGA PIXEL

With the FS10 you get a powerful 1.07 Megapixel CCD image sensor. The video you shoot will be sharp, clear and more true to life, as will your still photos. You'll capture every dramatic color in a sunset at the beach and see more clearly than ever the happiness on the face of your child as she scores the winning goal in the big game. Relive your memories, just as they happened.

Canon Exclusive: Genuine Canon 48x Advanced Zoom

The Genuine Canon 48x Advanced Zoom on the FS10 is just the kind of **exclusive Canon feature** you've come to expect from the leader in imaging and optics. Advanced Zoom extends the power of your zoom and is the longest zoom Canon has ever offered. In both wide angle and telephoto positions, there is virtually no loss in image quality throughout the range. How is this accomplished? With a Genuine Canon lens which remains in constant motion through the entire extended zoom range aided by our proprietary DIGIC DV II image processor.



Genuine Canon Video Lens



1x



48x

There's practically no loss in image quality through an extraordinary range of zoom, so you'll get good, clear shots as you follow that sailboat race around the harbor or catch every step of that toddler scrambling across the lawn.

The FS10 offers you more flexibility to get just the shot you need by giving you the choice of Advanced Zoom in default mode or you can select a 37x Optical Zoom or a 2000x Digital Zoom. You will always be able to get the shot you need, no matter how close or far away and always with the quality you expect from Canon.

Canon Exclusive: DIGIC DV II Image Processor

The Canon DIGIC DV II Image Processor is the next generation of **Canon's exclusive** DIGIC DV signal processing technology. Designed specifically for HD, DIGIC DV II ensures optimal image quality. It also ensures optimal image quality for still images, even though video and still images have different color requirements. DIGIC DV II is just another one of Canon's advanced technologies that make the FS10 an exceptional performer.

**DIGIC
DVII**



Thanks to Canon DIGIC DV II image processing, the FS10 produces video with improved color reproduction -- especially in skin tones, and dark and light scenes. It also uses a hybrid noise reduction system that employs two types of noise reduction -- for video images that are crystal clear. Regardless of your subject or setting, there's no worry about capturing them more closely to the way they appear in front of you.

Plus, the Canon DIGIC DV II Image Processor features improved continuous shooting of digital photographs with the FS10. You can shoot five 1152 x 648 still images per second, and enjoy faster processing of your images to both the FS11's internal memory as well your memory card. It also helps lower power consumption for longer battery life.

2.7" Widescreen LCD

The 2.7" Hi-Res Widescreen LCD on the FS10 lets you see more of what your camcorder is recording. There's no need to imagine what your final image will look like on your widescreen television because it's squeezed into a small space while you're shooting. What you see will be what you get.



Superb Shooting Control

Joystick Control

The Joystick makes using the camcorder easier than ever. Extra buttons have been eliminated, allowing you to access many functions from one convenient place. The Joystick lets you control Play, Stop, Fast Forward, and Rewind functions during playback. It also controls exposure lock and exposure compensation during recording.



Variable Zoom Speed Control

Another sure sign of amateur video is the unsteady zoom shot. But with the FS10's zoom control, you simply select one of three pre-set zoom speeds for smooth, steady, professional looking zooms.

Level and Grid Markers

With the Level Marker feature, it's easy to keep your camera level for more professional looking video. Line up any horizontal lines in your shot -- such as the horizon -- to the marker and you can be sure your camcorder is level.



The FS10's Grid Marker feature lets you compose your shot accurately, according to the grid in your viewfinder. You can even choose from two different colors for the grid. This ensures that you see the grid, no matter what the background color of your shot is.

Program AE Mode

For the best exposure for various situations, the FS10's Program AE mode will automatically adjust the settings to compensate for the conditions and subject. Choose from Portrait, Sports, Night, Snow, Beach, Sunset, Spotlight and Fireworks. You won't have to guess if you're capturing all the action just the way you want it because the FS10 will do it for you.



Quick Start

Never miss a quickly unfolding shot again. Push the Quick Start button between shots and it places the FS10 in standby mode. When the action starts, push the Quick Start button again to begin recording in less than one second. You'll also help extend your battery life over leaving the camcorder in regular recording mode.

Low Light Performance

Some of the most magical shots are taken at the end of the day or long after the sun has set. You won't miss any of them, thanks to the FS10's mini video light. The light lets you shoot subjects in color in low light up to 4.9 feet away. So, whether it's a shot of a sleeping baby, or a dramatic skyline at night, the FS10 captures all the moments you want to record.



DVD Burner Compatible

You can also easily burn DVDs of the video shot with your FS10 as it is compatible with Canon's new DW-100 DVD Burner. A one cable connection is all it takes to send the files across and with the click of a few buttons, your videos will be burned to a disc ready to play in a compatible DVD player.

Stunning Digital Photography

The FS10 has many advanced photo features which make it a camera that rivals other state-of-the-art digital cameras. You get the best of both video and photos.



Megapixel Photos

MEGA PIXEL The same Megapixel CCD that ensures sharp, vivid video also gives you brilliant digital photographs. You will be able to capture outstanding digital photographs with a resolution of 1152 x 684 for sharp, crisp still images.

Canon DIGIC DV II Image Processor

Canon's exclusive DIGIC DV II Image Processor features improved continuous shooting of digital photographs with the FS10. You can shoot 5 1152 x 684 still images per second, and enjoy faster processing of your images to both the FS11's internal memory as well as your memory card.

**DIGIC
DVII**

Focus Features

Auto Intelligent Auto Focus (AiAF) ensures sharp images and gives creative flexibility. Even when your subject isn't in the center of the frame, the FS10's 9 Point AiAF will automatically select from 9 metering frames on the screen to help bring images into sharp focus.

Auto Exposure Modes



Like any good digital still camera, the FS10 lets you choose from a range of exposure modes. Auto mode automatically sets the exposure, letting you concentrate on your subject. TV (shutter priority) mode lets you select the shutter speed for sharp, action shots. In P (program) mode, the camcorder adjusts camera settings automatically.

Program AE Mode

Your life happens everywhere, so the FS10 gives you settings that automatically result in the best exposure settings for different conditions and different subjects.



Portrait mode ensures shallow depth of field for a pleasing background to your shots of friends and family. Sports mode stops the action with faster shutter speeds. Night mode is designed to give you great shots after the sun goes down. Snow and Beach modes compensate for bright surroundings and give you the proper exposure on your subject. Sunset mode results in vibrant, well-exposed colors for one of the toughest subjects to capture. Use Spotlight mode when your child is on stage and in the spotlight -- literally -- and you want to make sure the exposure is right for them. And, Fireworks mode records brilliant images of another tough subject: the holiday fireworks display.

Level and Grid Markers

With the Level Marker feature, it's easy to keep your camera level for more professional looking photographs. Line up any horizontal lines in your shot -- such as the horizon -- to the marker and you can be sure your camcorder is level.

The FS10's Grid Marker feature lets you compose your shot accurately, according to the grid in your viewfinder. You can even choose from two different colors for the grid. This ensures that you see the grid, no matter what the background color of your shot is.



Share Your Photos

Your FS10 comes with features that make it simple to share your still photos.

Print/Share

Print/Share turns your FS10 into a photo lab in the palm of your hand. Simply connect your camcorder directly to select Canon printers or any PictBridge-compatible printer with the supplied USB cable. Then, with a simple touch of the Print/Share button, print directly from your FS10 without going through a computer.



Print/Share also makes it easy to transfer your still images to your computer. Simply connect your FS10 and your computer, press the Print/Share button and your photos are downloaded to your computer.

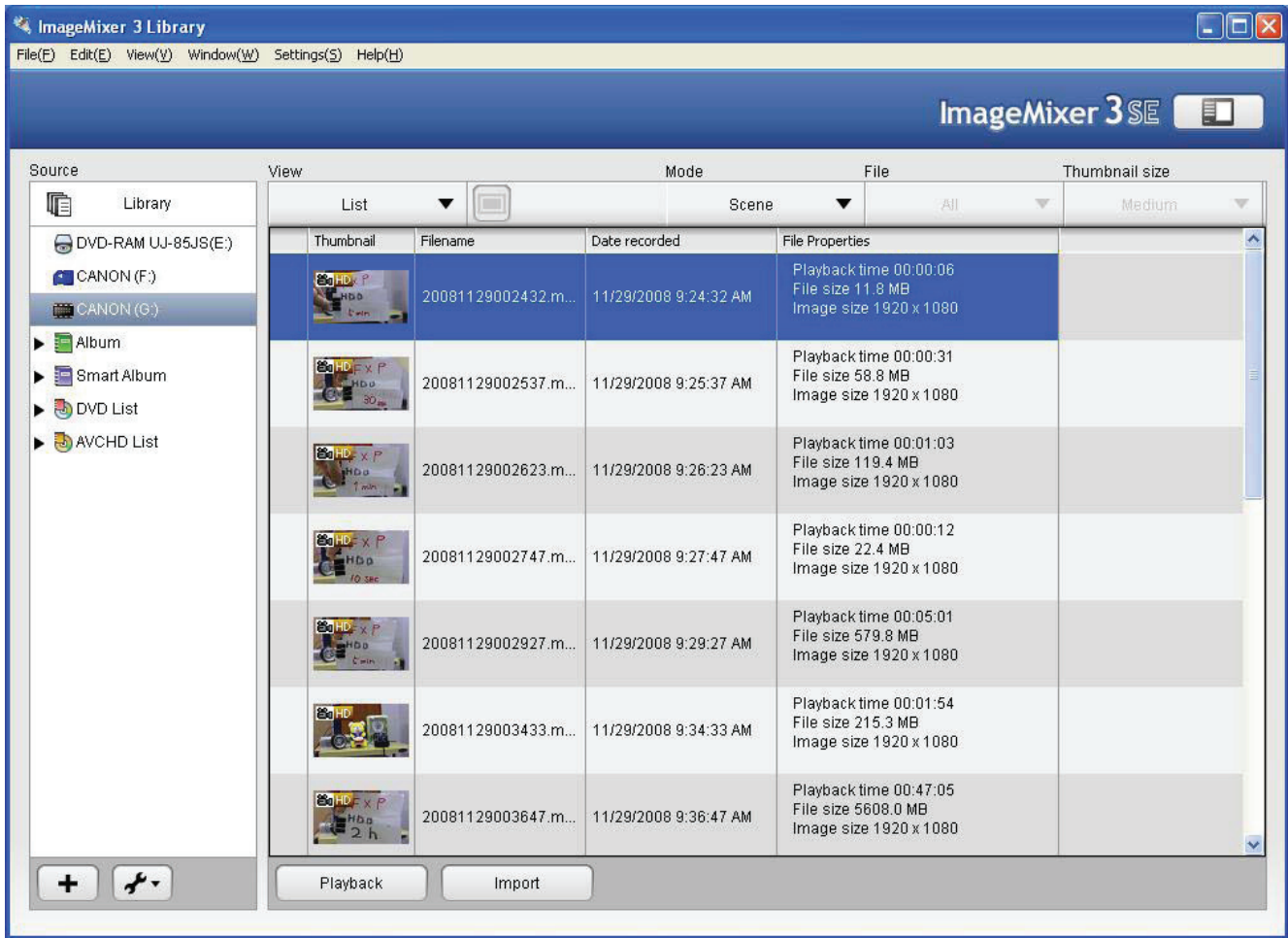
SDHC Memory Card

The FS10 makes it easy to store digital photos onto an SDHC Memory Card.

DVD Burner Compatible

You can also easily burn DVDs of your still photos taken with your FS10 as it is compatible with Canon's new DW-100 DVD Burner. A one cable connection is all it takes to send the files across and with the click of a few buttons, your photos are ready to share with all.

Bundled Pixela ImageMixer Software



Enjoy the flexibility and versatility of your Canon Flash Memory camcorder with the supplied Pixela ImageMixer software. This powerful software lets you organize, enhance, and share your video. An easy-to-use application launcher makes it easy to transfer your video to your computer, burn an AVCHD DVD or Standard Definition DVD. A sophisticated catalog system keeps all your videos indexed and organized-so you can always find them quickly. Inside ImageMixer lives feature packed video editing software, allowing you to trim, reorder, or combine scenes. To give your movies a professional touch, simply add scene transitions, music, and titles. And when you're finished, burn an AVCHD DVD or Standard Definition DVD to relive the memories on your TV. A built-in video player allows you to play your AVCHD or MPEG-2 data files on your computer. For added versatility, Pixela ImageMixer can convert your movie to a file format compatible with web video sharing sites. Additionally, your movie can be resized for online posting, and viewed on portable entertainment devices.

Additional Features

- The Intelligent Lithium-ion battery which powers the FS10 is a major, and useful, advance. It not only more accurately tracks remaining battery life, it also gives a display in minutes remaining. It will allow you to better plan your shooting, so you won't be caught out with a battery that suddenly goes from "half" to "empty".
- The Built-in Electronic Lens Cover means you never have to go looking for your lens cover again. Turn your camcorder on and the lens cover automatically opens. Turn it off, and the cover closes.
- USB 2.0 Hi-Speed Terminal for digital video streaming and ultra-fast transfer of movies and photos.
- With the FS10's Microphone Terminal you can attach an external microphone if you need to record audio more accurately from a specific source.
- Wireless Remote Control lets you operate your FS10 from a distance, so you don't have to be left out of the picture.
- 1 Year Parts And Labor Limited Warranty provides protection long after other manufacturers' warranties expire.



Specifications

Digital Video

| | |
|---|---|
| Power Consumption | TBA |
| Image Sensor | 1/6" CCD Sensor |
| Total Pixels | Approx. 1,070,000 pixels |
| Effective Pixels | Movies: 16:9 - approx. 550,000 pixels (ADV.Z off) 16:9 - approx. 710,000 pixels (ADV.Z on, wide) 16:9 - approx. 410,000 pixels (ADV.Z on tele) Photos: approx. 800,000 pixels |
| Maximum recording time | 8GB Internal Flash Drive: LP (3 Mbps): 5 hours, 10 minutes SP (6 Mbps): 2 hours, 45 minutes XP (9 Mbps): 1 hour, 50 minutes Greater capacity is possible by adding an SDHC Memory Card. |
| Lens | Zoom Ratio 48 Advanced Zoom (16:9 mode) 37x Optical/2000x Digital Focal Length f=2.6-96.2mm Zoom Speed Variable/3 Fixed Zoom Speeds Max. F/Stop f/2.0-5.2 |
| Programmed AE | Auto, Program, Tv, Portrait, Sports, Night, Snow, Beach, Sunset, Spotlight, Fireworks |
| Max Shutter Speed | 1/2000 1/500 (card) |
| Minimum Focusing Distance | 10 mm (wide)/1m (tele) |
| White Balance | Daylight, Tungsten, Auto, Manual |
| Image Stabilization | Electronic |
| LCD Screen | 2.7" Widescreen LCD (Approx. 123,000 pixels) |
| Recording Media | Internal Flash Memory (8GB) or SD/SDHC Memory Card |
| Audio | Dolby Digital 2ch (AC-3 2 ch) |
| Microphone Terminal | 3.5 mm Stereo Mini-jack |
| Dimensions | (WxHxD) 2.3 x 2.4 x 4.9 in/58 x 60 x 124mm |
| Weight (not including lens and battery pack) | 9.2 oz. (260g) |

Note: A Class 2 or higher card is recommended. Also, movie recording requires cards with 128 MB of memory or more. Cards made by Toshiba, SanDisk or Matsushita are recommended. No particular restrictions apply for still images.

Supplies & Accessories



Battery Charger CG-800
Charges Li-Ion Battery 800 Series



STV-250N Mini Plug to RCA
Used to connect to a TV or VCR.

Shoulder Strap SS-600

SC-A30 Genuine Leather Carrying Case

Once you finish recording, keep your camcorder and all your accessories in this professional-looking, genuine leather soft carrying case.

SC-A40 Genuine Leather Carrying Case

Once you finish recording, keep your camcorder and all your accessories in this professional-looking, genuine leather soft carrying case.

SC-A60 Genuine Leather Carrying Case

Once you finish recording, keep your camcorder and all your accessories in this professional-looking, genuine leather soft carrying case.

Soft Case SC-A70



DW-100
DVD Burner and Player - Key to enjoying the superb video produced by the latest Canon High Definition and Standard Definition camcorders is sharing that video with family and friends. Now, it's easier than ever to transfer and backup footage from your camcorder onto DVDs with the Canon DW-100 DVD Burner.



Battery Pack BP-808
890mAh Lithium Ion

**Can't find the part or accessory you're looking for? Customer Support can help.
Call 1-800-828-4040 for assistance.**

What's in the Box

FS10 Kit Contents:

1. FS10 Camcorder
2. WL-D88 Wireless Controller
3. CR2025 Lithium Coin Battery
4. BP-808 Battery Pack
5. CA-590 Compact Power Adapter
6. AC Cable
7. Interface Cable
8. STV-250N Stereo Video Cable
9. WS-30 Wrist Strap
10. Pixela ImageMixer™ 3SE Disc
11. Digital Video Solutions Disc for Windows and Macintosh

