

Canon

Mini DV



Precision-Engineered
Genuine Canon
Video Lens



ELURA 2 MC

ELURA 2

DIGITAL VIDEO CAMCORDERS



**Go Digital
Go Canon**

Full-Featured, Ultra Compact
Digital Video In a Class By Itself

www.canondv.com

The Canon ELURA2 and ELURA2 **MC** (Memory Card) represent the peak of technology, functionality and miniaturization. Each innovative model is capable of capturing high-resolution digital video, still photos and 30 frames per second Progressive Scan Digital Motor Drive. Beyond their shooting versatility, each ELURA2 model effortlessly connects to a TV, VCR or DV-ready computer. To easily record, manage and transfer still images to a personal computer, the ELURA2 **MC** accepts the industry standard MultiMediaCard. The ELURA2 **MC** and ELURA2 measure up to the new standards in digital imaging in a size that doesn't measure much at all.



Actual Size

Progressive Scan CCD

The ELURA2 **MC** / ELURA2 incorporate a Progressive Scan CCD image sensor that delivers a significant improvement in performance and image quality. Each and every light gathering pixel on the CCD is used to produce a full frame video image 60 times per second. In contrast, the conventional interlace-type CCD produces only half a full frame, known as a field, in the same amount of time. The Progressive Scan CCD provides a serious advantage to those who desire impeccable clarity of fast moving subjects. The interlace method used on other camcorders combines two field images together, but a time lapse between the fields can cause a disturbing image flicker on the television screen when playback is paused. Recordings of subjects moving at high speed such as athletes, wildlife and even machinery can be viewed on a television with superior resolution. And this CCD type makes it possible to produce



better quality video prints than ever before. Also, realizing people shoot video in a variety of light levels, Canon designed the ELURA2 **MC** / ELURA2 to perform exceptionally well in low light too.

RGB Primary Color Filter

In addition to achieving higher resolution, the ELURA2 **MC** / ELURA2's Progressive Scan CCD integrates an RGB Primary Color Filter which separates light passing through the lens into individual red, green and blue color components, similar to professional camcorders. As a result, the ELURA2 **MC** / ELURA2 achieve more accurate color reproduction with finer gradations than models using a conventional complementary color filter. The difference is especially noticeable, for instance, in skin tones and scenes with a dominant color such as sunsets, a ski slope or a forest.



High Quality Shooting in Low Light Conditions

The ELURA2 **MC** / ELURA2 incorporate noise reduction circuitry to deliver superior image quality. By eliminating video noise, which can occur during signal processing, Canon has increased the signal to noise ratio. Your videos will be cleaner overall, free from annoying color noise or graininess when shooting under low light levels.

A Genuine Canon 10x Zoom Lens with 40x Digital Zoom

Expertise from designing and manufacturing 35mm camera and broadcast TV lenses contributed to the development of the ELURA2 **MC** / ELURA2's 10x optical zoom lens. It delivers incredibly high definition, outstanding contrast and maximizes the resolution capability of DV. You'll love its ability to transform distant subjects into dramatic close-ups quickly and



effortlessly. The digital zoom extends the magnification to 40x, revealing details too distant to be seen with just the eye alone.



Image Stabilizer

A high quality image stabilization system corrects camera shake instantly, giving you smooth, stable pictures. It enables you to record shake-free images, even on long telephoto shots without a tripod.

IMAGE STABILIZER





Full Connectivity and Full Range of Features in a Compact Body



canon connects
plug and edit
learn more at
www.icanstream.com

IEEE 1394 DV Terminal

The ELURA2 **MC**/ ELURA2 are equipped with a DV IN/OUT terminal that conforms to IEEE 1394. It takes just a single digital cable to transfer or copy your videos in pure digital form to your DV compatible computer or another Canon DV camcorder. Once you've transferred video images to your computer, you can edit your movies or send your movies over the Internet, post them on your Web site, print them out on a Canon color printer, transfer them back to your Canon camcorder and archive them on a Mini DV cassette or create a dubbing master.



DV Format

Enter the world of DV and realize truly amazing picture and sound quality. Images reaching up to 500 line horizontal resolution reveal stunning detail and clarity. Clearly superior quality than even the best analog camcorders, by 20% at least, and free from annoying color noise. DV is the right format, right now!

*A Genuine Canon
10x Zoom Lens with
40x Digital Zoom*

*Progressive
Scan CCD*



*Compact
and Lightweight*

Mini **DV** Digital
Video
Cassette

MultiMediaCard
(ELURA2 **MC** only)



MultiMediaCard & Complete Feature-Set for Versatile Video



MultiMediaCard (ELURA2MC only)

The ELURA2 **MC** expands video possibilities by offering a MultiMediaCard in addition to a Mini DV cassette. This ultra-small and ultra-light media records, stores and manages still images, as well as allows easy transfer to a PC*. Copy still images from a videocassette to a

MultiMediaCard, and vice versa. Produce effects not possible with just a cassette using one of the MultiMediaCard's three types of Card Mix Effects. Choose one of the sample images provided on the supplied MultiMediaCard such as a picture frame or crashing

waves and combine it with the currently recording image.

*With a commercially available PC card adapter or reader.



3 Shooting Modes

The ELURA2 **MC**/ ELURA2 have three shooting modes to accommodate any of your needs.

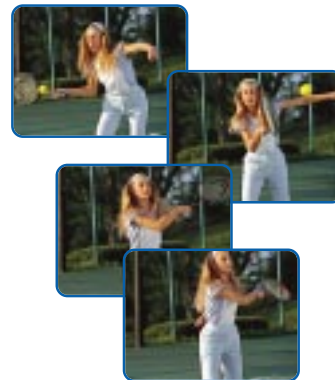
1) Normal Movie Mode

Select this recording mode when you choose to capture smooth, full motion video for playback on your TV. The Progressive Scan CCD and RGB Primary Color Filter achieve video quality worth watching again and again.



2) Digital Photo Mode

The ELURA2 **MC**/ ELURA2 function as a digital still camera; they're like two cameras in one. Just press the photo button to capture more than 700 stunning still pictures on a single videocassette (in SP mode) or combine video and still pictures together with the added benefit of audio. The ELURA2 **MC** can also capture approximately 60 fine resolution still pictures onto an 8MB MultiMediaCard.



3) Digital Motor Drive™ (Progressive Scan Mode)



The ELURA2 **MC**/ ELURA2's Digital Motor Drive, made possible only through the use of a Progressive Scan CCD, captures high resolution

pictures packed with excitement. Faster than the high speed motor drive of a 35mm camera, the ELURA2 **MC**/ ELURA2's Digital Motor Drive amazes photo hobbyists and professional photographers by recording an incredible 30 full frame images per second, continuously. Select this mode when you plan to capture superior quality frames from videocassette onto a MultiMediaCard (ELURA2 **MC** only), viewing on TV, printing or downloading to a DV compatible computer. The Digital Motor Drive, first introduced by Canon, expands the ELURA2 **MC**/ ELURA2's versatility and the variety of your images. (Use Normal Movie Mode for standard video recording.)



Digital Effects

The ELURA2 MC/ ELURA2 include a selection of digital effects for a more appealing look and greater imaging variety.*

*When dubbing, the Multi-image Screen Effect is not available.



Lithium Ion Power

Lithium ion battery packs can be recharged at any time, so you will always be prepared for peak shooting performance, and never caught without power unexpectedly.



PCM Digital Sound

ELURA2 MC/ ELURA2 offer two digital audio modes to enhance the playback experience. The 16 bit mode produces the higher, CD equivalent, two-channel sound quality while the 12 bit mode records on two of four channels leaving two other channels free to dub extra sound at a later date.

PCM STEREO



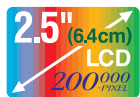
Program Auto Exposure

Ensures great video results even in challenging shooting conditions. Select the program that matches your scene and the ELURA2 MC/ ELURA2 adjust internal controls for perfect video every time. Choose from Easy Recording, Auto, Sports, Portrait, Spotlight, Sand & Snow and Low Light.



Flexible LCD View Screen and Color Viewfinder

The 2.5" view screen makes it easier to compose sensational shots from any angle. It swivels and flips for maximum handling comfort and flexibility. It also tucks neatly away when bright shooting conditions make the eyecup viewfinder the preferred way to shoot.



A/V Insert and Audio Dubbing

Use this feature to insert new scenes of video from your VCR or other camcorder on to a tape recorded in the SP mode. Using a recording made in the 12 bit audio mode you can also add stereo sound from another audio source or through the internal microphone or an external microphone.



1 Faders

Use the various faders to start or end scenes with a fade to or from black. Choose between Fade Trigger, Wipe, Scroll and Mosaic fades.



2 Effects

Give variety to your images during recording by adding Art, Black and White, Sepia or Mosaic effects.



3 Multi-image Screen

Divides your display screen into four, nine or sixteen pictures with the Image Capture feature. You can choose the speed at which the images are captured: Manual, Slow, Moderate, or Fast.



Analog Line-in

Send an analog video signal from your TV, VCR or camcorder into the ELURA2 MC/ ELURA2 and record it onto DV. It's great for making copies or preserving precious originals.



Manual Controls

In addition to being fully automatic, the ELURA2 MC/ ELURA2 offer manual control over focus, exposure, white balance and shutter speed.

- Microphone Terminal
- Built-in Speaker
- Photo Search/Date Search
- Time Code/Data Code
- LP mode (extends a 80 min. Mini DV tape to 120 min. or 60min. tape to 90 min.)
- Superb Playback
- Composite and S-Video Input/Output
- Self-Timer
- Confirming/Warning Beeps
- Zero Set Memory
- World Clock
- 16:9 Wide Screen TV Effect
- Remote Control
- Record Search & Review
- LANC Terminal**



Pictures simulated

ELURA 2 MG



ELURA 2



This mark identifies genuine Canon video accessories. When you use Canon video equipment, we recommend Canon-brand accessories or products bearing the same mark.

Availability differs from area to area.

Power Sources

Lithium Ion Battery Packs

Extra batteries for use with the ELURA2 MG / ELURA2.



Battery pack	Maximum recording time	
	using viewfinder	using LCD screen
BP-406 (supplied, single-capacity)	55 min.	45 min.
BP-422 (optional, triple-capacity)	3 hr. 20 min.	2 hr. 45 min.

CH-910 Dual Battery Charger/Holder

Holds two BP-900 series battery packs. Can charge them consecutively and connect directly to ELURA2 MG / ELURA2 to give twice the playback time.



CB-400 Car Battery Adapter

To charge BP-400 series batteries or power the camera from a car cigarette lighter socket.



Creative Shooting Accessories

SA-1 Adapter Bracket

Attach an external microphone or VL-10Li with this optional adapter.



VL-10Li Battery Video Light

Powerful 10 W illumination. A BP-900 series battery attaches directly, so operation is cable-free.



ZR-1000 Zoom Remote Controller

Plugs into the ELURA2 MG / ELURA2's LANC terminal and allows you to control functions such as record start/stop, zoom and focus while the camcorder is mounted on a tripod, without touching the camcorder body itself.



Floppy Disk Adapter

FR-100 Floppy Disk Still Image Recorder

Connects to the ELURA2 or any Canon digital camcorder with a DV terminal and records still images onto a floppy disk in one of three resolution choices. Images from the disk can then be transferred to a computer.



Carrying Accessories



SC-1000 Soft Carrying Case



SC-A50 Soft Carrying Case

Genuine Leather

Canon Digital Videocassettes



DVM-E60 Digital Video Cassette



DVM-CL Digital Video Head Cleaning Cassette

ELURA2 MG / ELURA2 Specifications

Power supply (rated): 7.4 V DC (Battery)
7.2 V DC (DC IN)

Power consumption: 4.3 W (using viewfinder), 5.3 W (using LCD screen)

Television system: EIA standard (525 lines, 60 fields) NTSC color signal

Video recording system: 2 rotary heads, helical scanning system DV system (Consumer digital VCR SD system) Digital component recording

Audio recording system: PCM digital sound: 16 bit (48kHz/2ch), 12 bit (32kHz/4ch)

Image sensor: 1/4" Progressive Scan CCD (charge coupled device) approx. 680,000 pixels (approx. 360,000 effective pixels)

Tape format: Videocassettes bearing the (Mini DV) mark.

Tape speed: SP: 3/4 ips (18.81 mm/s); LP: 1/2 ips (12.56 mm/s)

Maximum recording time: SP: 80 minutes (with a 80 min. cassette); LP: 120 minutes (with a 80 min. cassette)

Fast forward/rewind time: 2 mins 20 sec. (with a 60 min. cassette)

Lens: F/1.6-2.6, 10x power zoom, 3.5-35.0 mm

Focusing system: TTL autofocus, manual focusing possible

Minimum focusing distance: 3 ft 3 3/8 in. (1 m), 3/8 in (1 cm) on maximum wide angle

Maximum shutter speed: 1/2,000 sec

Minimum illumination: 7.5 lx using the Low Light program

Recommended illumination: More than 100 lx

Filter diameter: 27 mm

Viewfinder: 0.44 inch, color LCD (approx. 113,000 pixels)

LCD screen: 2.5 in measured diagonally (approx. 200,000 pixels)

Microphone: Stereo electret condenser microphone

DV terminal: Special 4 pin connector (based on IEEE1394)

Video terminal: 1 Vp-p/75 ohms unbalanced

S-video terminal: 1 Vp-p (Y signal), 0.286 Vp-p (C signal)

Audio terminal: Input level: -10 dBV/47 kohms, unbalanced; Output level: -10 dBV, less than 3 kohms, unbalanced

Operating temperature range: 32 - 104° F (0 - 40° C)

Dimensions: 1 7/8 x 4 1/8 x 3 3/8 in (48 x 106 x 86 mm)

Weight: 13 3/4 oz (390 g)

ELURA2 MG only

Recording media: MultiMediaCard

Image format: Design rule for Camera File system (DCF)

Print order format: Digital Print Order Format (DPOF)

THE CANON ELURA2 MG / ELURA2 KIT



- ELURA2 MG / ELURA2
- BP-406 Battery Pack
- CA-400 Compact Power Adapter
- DC-400 DC Coupler
- DU-300 Docking Unit
- Wireless Controller
- S-150 S-video Cable
- STV-250N Stereo Video Cable
- MMC-8M MultiMediaCard (ELURA2 MG only)

www.canondv.com



Printed on 40% reused paper.

Errors and omissions excepted. Weight and dimensions are approximate. Subject to change without notice. **Connect only equipment bearing the LANC symbol.

Canon is a trademark of Canon Inc. Digital Motor Drive is a trademark of Canon Inc.

Warning: Unauthorized recording of copyrighted materials may infringe on the rights of copyright owners and be contrary to copyright laws.

Canon

U.S.A. ————— **CANON U.S.A., INC.**
Consumer Information Center toll-free at 1-800-828-4040 (in U.S.A.)
One Canon Plaza, Lake Success, NY 11042 USA

CANADA ————— **CANON CANADA INC.**
Consumer Information Center toll-free at 1-800-828-4040 (in Canada)
6390 Dixie Road, Mississauga, Ontario L5T 1P7

MEXICO ————— **CANON MEXICANA, S. DE R. L. DE C. V.**
Periferico Sur No. 4124 Col.
Ex-Rancho de Anzaldo C.P. 01900 Mexico, D.F.

CENTROY SURAMERICA ————— **CANON LATIN AMERICA, INC.**
6505 Blue Lagoon Drive Suite 325 Miami FL 33126 USA

ASIA ————— **CANON HONGKONG COMPANY LTD.**
9/F, The Hong Kong Club Building, 3A Chater Road, Central, Hong Kong