

© 2001 ADS Technologies. All Rights Reserved
First Edition: Revision 2.1 Feb, 2001

Microsoft, MS-DOS, Windows, Windows 95 and Windows 98 are registered trademarks of Microsoft Corporation. IBM is a registered trademark of the International Business Machines, Inc.

ADS is a registered trademark of ADS Technologies Inc.

ADS Technologies (ADS) makes no warranty of any kind with regard to this material, including but not limited to, the implied warranties of merchantability and fitness for a particular purpose. The information furnished within this written document is for information purposes only and is subject to change without notice. ADS Technologies assumes no responsibility or liability for any errors or inaccuracies that may appear herein. ADS makes no commitment to update or to keep current information contained within this document.

Table of Contents

A letter from the President of ADS	5
Introduction	6
System Requirements	6
Package Contents	7
What you need to install PYRO	7
PYRO 1394	
Installation Guide	9
Note to beginning Videographers	10
Hardware Installation	11
PYRO 1394 PCI card Hardware install . . .	11
PYRO 1394 PCI card Software install . . .	15
Camcorder Driver Installation	16
Connecting the Digital Video Camcorder . .	17
Camcorder Driver information	18
Install Video Studio	18
Running Video Studio for the first time . .	19
Installation Summary	20
Using Ulead VideoStudio	21
Your First Movies	22
Using VideoStudio	22
Starting a new project	22
Capturing Motion Video	23
Still Image Capture	23
File Size Limitations	24
Saving Your Project	24
Saving Your Movie	24
Sending Your Movie	
Back to Your Camcorder	25
DV SmartPlay	26
It's a Wrap	26
Tips for Smooth Video Capture	27
Audio Tips	28
PAL DV Camera Information	29
Help Resources	30
Service and Warranty	32
FCC Information	33

A Letter from the President of ADS Technologies **“Connect, Create, and Store”**

At ADS Technologies, Inc. we bring the best and latest multimedia technology to your PC. Our products allow you to “Connect, Create and Store”.

CONNECT with our line of USB and 1394 Host and Hub devices. Today, external bus technologies such as USB and FireWire/1394 let you connect hundreds of devices to your PC or MAC. We have the connectivity solutions that allow you to get the most out of USB and 1394 technologies.

CREATE audio and video productions with our line of video capture and editing solutions. We have video editing solutions to fit everyone’s needs, ranging from the novice level to the professional level.

STORE that multimedia masterpiece with one of our 1394 storage solutions. Today’s multimedia files are getting larger and larger. You need solutions that help you easily and cost effectively store your work; we’ve got those solutions.

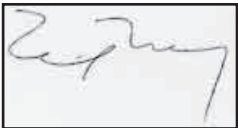
More than ever, my goal has been to bring new technologies to the consumer market at affordable prices and with significant value to you, our customer.

ADS products are easy to use. Most of our products are Plug-and-Play, easy to install and offer software to help get the best value out of the hardware product. And if you do need help, we will do our best to support you. We want every customer to be a happy ADS customer.

The combination of technology innovation, affordability, quality, value and support has made our products award-winners in the press and at conventions. More over they are winners with our customers.

I wish to thank you for choosing ADS Technologies and I hope you enjoy your new multimedia experience.

Sincerely,

A rectangular box containing a handwritten signature in dark ink, which appears to read "Michael McCoy".

Michael McCoy
President

Introduction

Add 3 FireWire Ports to your PC

Use the PYRO Digital Video card to transfer video from your digital camcorder to your PC, edit the video, add titles, effects, background music and more. Then send your edited video back to your digital recorder. Display your broadcast quality production on your TV or copy to your VCR. Your friends will be amazed with your Hollywood directorial style!

FireWire/1394 is the latest in high-speed external bus technology. This means you can instantly connect devices to your PC without opening up the case. FireWire offers true plug and play and hot swapping of devices. Just plug in your digital camcorder, launch the software and you're ready to make movies.

PYRO Features:

- Connect to Digital Camcorders
- Connect the PYRO 1394 WebCam
- Connect to 1394 Hard Drives
- Edit video and send out to tape
- Capture still images
- Produce Digital Video Movies
- 3 ports at 400 Mbps
- Fully IEEE 1394a compliant
- Plug and Play

Requirements:

- Intel Celeron 400MHz or AMD K6-400MHz or above
- Windows 98, Windows 98SE, Windows 2000 or Windows ME
- 64 MB of RAM and Sound Card
- AGP or PCI video card with 4 MB of RAM
- CD-ROM Drive
- 170 MB hard disk space for capture/editing applications
- 4 GB hard disk space (20 minutes of raw DV footage)

Package Contents

- 1.** PYRO Card
- 2.** Software CD (Drivers and Video Editing Package)
- 3.** 1394 to DV Editing Cable
- 4.** User's Manual

Note: If you did not receive one or more of the contents listed above inside the PYRO package, please contact the vendor you purchased it from or contact ADS directly.

What you need to install PYRO:

- Screwdriver
- Windows 98, Windows 98 SE, Win 2000, or Win ME CD
- PYRO CD

INSTALLATION GUIDE

Note to beginning Videographers:

If you are new to video editing, we recommend that you learn the basic concepts of video capture and editing with Video Studio, then when you are ready, move on to Media Studio Pro 6.0VE. Media Studio Pro 6.0VE is located on CD #2 and you can install this when you are ready. Media Studio Pro 6.0VE is a professional level video capture and editing system, which offers a great deal of flexibility and complex video creation capabilities.

We have included both Video Studio and Media Studio Pro 6.0VE so that you can progress from a simple consumer level video-editing program (Video Studio) to a professional level editor (Media Studio Pro) without having to purchase anything extra. We believe this makes the PYRO 1394DV an exceptional value to you, the consumer.

INSTALL IN THIS ORDER:

- 1.) Hardware Installation - Install PYRO Card**
- 2.) Camcorder driver Installation**
- 3.) Connecting the Digital Camcorder**
- 4.) Install Video Studio**

1.) HARDWARE INSTALLATION

Follow the steps below to Install the PYRO hardware. Move on to connecting your camcorder and installing the Video Studio software only if the PYRO hardware is properly installed. If the PYRO card is listed in Device Manager under 1394 Bus Controller with no exclamation marks and no conflicts, then the PYRO is properly installed

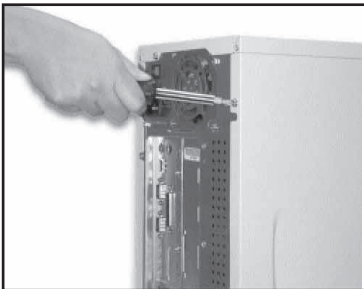
PYRO does require the use of an IRQ (Hardware interrupt address). Most new motherboards allow IRQ's to be shared, but not all motherboards are created equal. Check our on-line help at www.adstech.com for help on setting up IRQ steering if you encounter problems at this stage.

PYRO 1394 PCI Card Hardware Installation



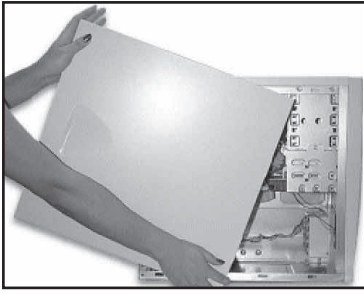
Step 1

Power down your computer and disconnect the power cord. Be sure to remove the power cord completely from your computer as shown in the picture to the left.



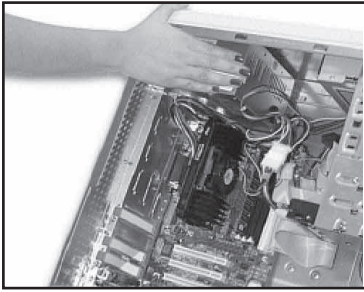
Step 2

Remove each screw found on the back of the computer. Be sure to put the screws you removed in a safe place, as you will need them again when replacing the shell on your computer.



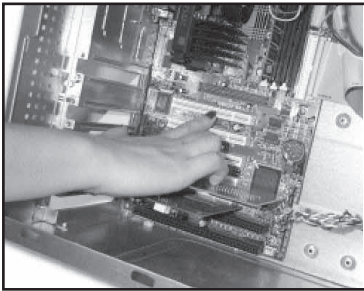
Step 3

Carefully remove the shell from your computer.



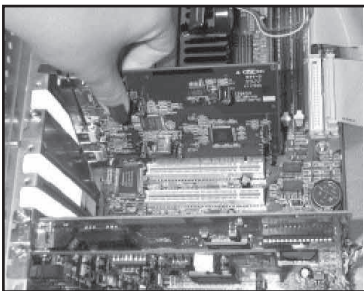
Step 4

With the power cable disconnected from your computer, touch the metal part of the case to ground yourself. This will discharge any static electricity from your body which can damage your computer.



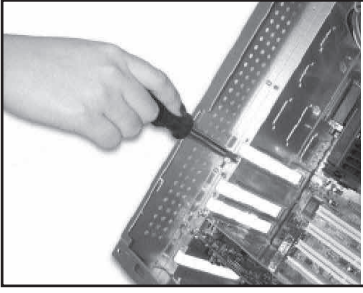
Step 5

Locate an available PCI expansion slot. This will be in the area of your computer where other cards that look similar to the PYRO PCI card are installed.



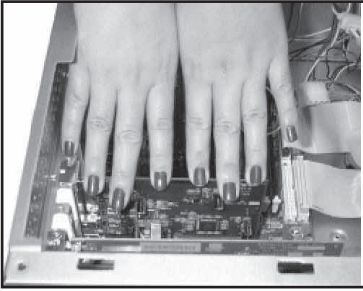
Step 6

Visually confirm that the PYRO 1394 PCI Card will fit into the available slot you have chosen.



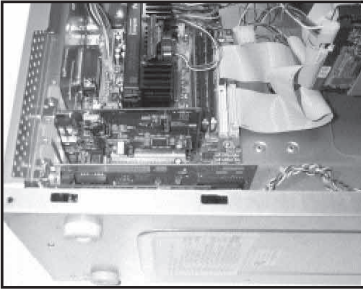
Step 7

If necessary, remove the knockout on the back of your computer which corresponds to the PCI slot you have confirmed as your selection. If there is a screw, place it in a safe place as you will be using it to attach the PYRO 1394 PCI Card.



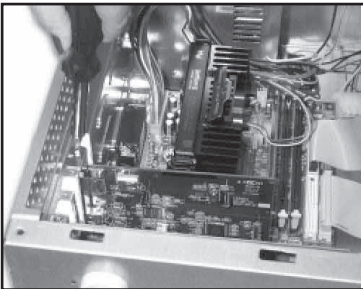
Step 8

Push the PYRO 1394 PCI Card firmly into the PCI slot. Apply pressure as needed (but do not force the card) until the edge connector is completely in the slot.



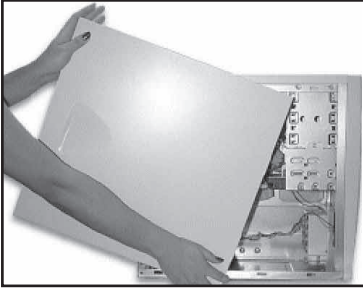
Step 9

Once the PYRO 1394 PCI Card is fully seated, the gold edge connectors are completely in the slot.



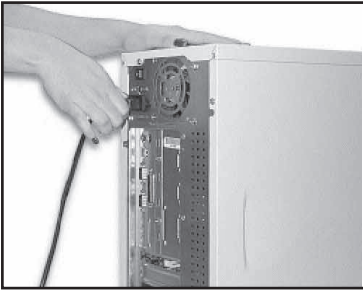
Step 10

Mount the PYRO 1394 PCI Card in place with a screw. Make sure the screw is firmly tightened so the PYRO 1394 PCI Card does not slide out of its seated position.



Step 11

Replace the computer's shell and screw it back in place with the screws you removed in step 2.



Step 12

Now that your PYRO 1394 PCI Card is installed and the shell is in place, you can safely connect the power cable. Now restart your computer and install the drivers from the CD.

When you turn on your computer you will be guided through the new Hardware driver installation.

PYRO 1394 PCI Card Driver Installation



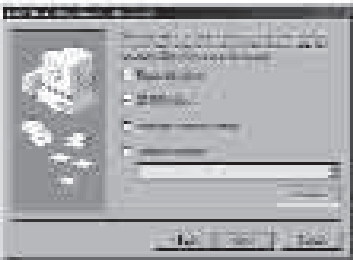
Step 1

To the left is a picture of the dialog box that will notify you that Windows has detected your new hardware.



Step 2

Windows will now automatically run the "Add New Hardware Wizard." Select the first option "Search for the best driver..." and click the "Next" button.



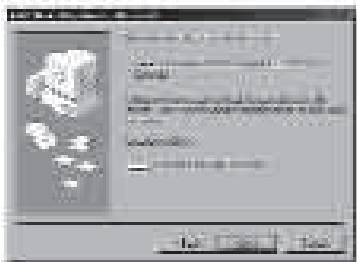
Step 3

You will now see a box that asks where you would like to search for the drivers. Select the "CD-ROM" option. Make sure you have the Windows 98 SE, Windows 2000, or Windows ME CD inserted in your CD-ROM drive. After you have done this, click on the "Next" button.



Step 4

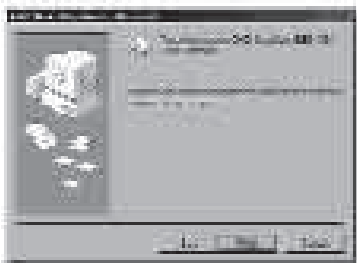
After Windows locates your new driver on the Windows 98 SE, Windows 2000, or Win ME CD, it will ask if you would like to install the driver. Select the first option that says "The Updated Driver" then click the "Next" button.



Step 5

Windows will now inform you it is ready to install your new driver. Verify that the path is the same as the picture to the left. It should read "C:\WINDOWS\INF\1394.INF"

Now click the "Next" button.



Step 6

Congratulations! You are now done with the driver installation. All that is needed from you now is to click the "Finish" button.

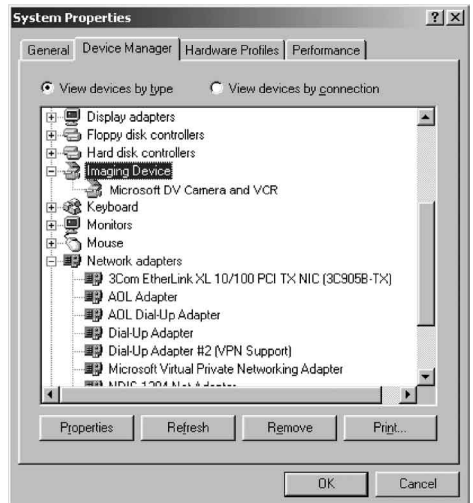
2.) CAMCORDER DRIVER INSTALLATION

- 1. DO NOT PLUG YOUR CAMCORDER INTO THE PYRO BOARD UNTIL YOU HAVE INSTALLED THE CAMCORDER DRIVERS from PYRO CD #1.**
- 2. Insert the PYRO 1394DV CD into your CD-ROM drive. INSTALL DRIVERS.** The driver install will automatically install the correct version drivers to match your operating system. **THE DRIVERS WILL INSTALL ONLY IF YOUR PYRO CARD IS INSTALLED FIRST.**
- 3. If you have Windows ME or Windows 2000 it may not be necessary to install any camcorder drivers.**

3.) CONNECTING THE DIGITAL VIDEO CAMCORDER

Once you have installed the camcorder drivers you are ready to connect your camcorder to the PYRO Card. Follow these steps to ensure that the operating system recognizes your camcorder and you are familiar with the camcorder driver your system is using.

1. Use the External Power source supplied with your camcorder. Many camcorders do not have enough power when running from the battery.
2. Turn the Camcorder ON to the VCR/VTR mode.
3. Connect the DV Cable supplied with the PYRO to any available port on the PYRO card and your digital camcorder.
4. Your Camcorder will be recognized, as a new device by Windows and the camcorder driver will be loaded. In some cases Windows may ask for the Windows 98, WinME or Win2000 CD to load other needed files.
5. Open Device Manager (Start, Settings, Control Panel, System, Device Manager Tab). Check to see how your camcorder is listed. If you are using Win98 your camcorder will appear as “1394 DV Camcorder” under “Sound, Video and Game Controllers”. You are using the Texas Instruments camcorder driver. If you are using Win98SE, WinMe or Win2000 your camcorder will appear in Device Manager under “Imaging Device” and will be listed as a “DV camera or VCR”. Your camcorder is using the Microsoft camcorder drivers.



Camcorder Driver information and Descriptors:

Windows 98

Texas Instruments DV camcorder driver

Listed in Device Under: "Sound, Video and Game Controllers"
Shown as: 1394DV camcorder
File name: Dvcam.sys
Device Control Selection: TI 1394 Device Control
Output to camcorder Selection: TI DV Record

Win98SE, WinME or Win2000

Microsoft DV camcorder driver

Listed in Device Manager: "Imaging Device"
Shown as: DV camera or VCR
File name: MSDV.sys
Device Control Selection: MS 1394 Device Control
Output to camcorder Selection: MS DV Record

4.) INSTALL Video Studio

1. Connect your camcorder. Turn on to VTR/VCR Mode.
2. INSTALL Video Studio from PYRO CD#1. Follow the installation instructions. INSTALL EVERYTHING including Quick Time and the Microsoft NetShow services.
3. When the installation asks you to determine which camcorder drivers you have installed, let it search, then SELECT both the MICROSOFT DV driver and the TEXAS INSTRUMENTS DV Driver.
4. Re-Boot when the Installation is complete.



RUNNING VIDEO STUDIO for the First Time

1. Run Video Studio.
2. Before Starting a Project Click on the (G) Global Properties button. You will see a menu displayed like this. The Black Dot is highlighted next to the active video capture device.
3.
 - a. Select Change Capture Plug-in and choose Ulead Direct Show Capture Plug-in., Click OK.
 - b. Select Device Control and set the current device to TI 1394 Device Control or MS1394 depending upon which driver you are using (See Connecting Digital Camcorder section above). Click OK.
 - c. Click on Preferences to turn on/off the user guide and the enable/disable “Click OK before capture” function. When learning to use Video Studio you will want to have the User Guide turned on. The User Guide will give you a short overview of each mode as you move from Capture to Storyboard to effects, etc. You can also access Video Studio HELP at any time by touching the “F1” button on your keyboard.



Your Camcorder is a Plug & Play device:

Your camcorder is a plug and play device. It is only present in device manager if it is plugged in and turned on. Your camcorder must appear in Device Manager for Video Studio or any other software program to use the camcorder. The camcorder must always be “ON” before starting the Video Studio application. If you are not able to Select Ulead Direct Show Capture Plug-in or change Device Control settings, then please check device manager again to be sure that your computer has detected your camcorder. If your camcorder goes into “Sleep Mode” or is turned off, it will disappear from Device Manager. If your camcorder is not plugged in to the PYRO card, your computer will not detect it.

INSTALLATION SUMMARY:

- 1.) Install PYRO Card and install 1394 bus controller drivers from the Windows CD.
- 2.) Install camcorder drivers from PYRO CD #1
- 3.) Apply external power to your camcorder
- 4.) Turn Camcorder on to VCR/VTR mode
- 5.) Plug camcorder into PYRO card. Camcorder is recognized as new device.
- 6.) Check Device Manager to determine which camcorder driver you are using.
- 7.) Install Video Studio 4, Quick Time and Microsoft NetShow Services.
- 8.) Select Camcorder Driver(s) you are using.
- 9.) Re-Boot
- 10.) Start Video Studio application
- 11.) Select "G" global properties
- 12.) Select "Ulead Direct Show Capture Plug-in"
- 13.) Select Device control and choose either TI 1394 Device Control or MS1394 (be sure to match the camcorder driver you are using).

You are now ready to start your first video project.

Using Ulead VideoStudio

Your First Movies

USING VIDEO WIZARD

BEFORE YOU START: Watch the Tutorials

View the Video Studio Tutorials on PYRO CD #1 – Click Install Video Studio and then click Tutorials.

NOTE: We strongly recommend that you read the Video Studio Manual which is located on PYRO CD #1 and can be viewed by clicking the HELP Button.

When using Video Wizard you must follow these set-up steps before attempting to capture video.

1. Right click in the video preview window
2. Be sure that your camcorder is recognized.
3. Select “Ulead Direct Show Capture Plug-in”
4. Give the project a name.
5. Click – Get Video
6. Push Play on your camcorder. There is no software control of the camcorder in Video Wizard.
7. Click “Begin” to start capturing video.

USING VIDEO STUDIO

NOTE: We strongly recommend that you read the Video Studio Manual which is located on PYRO CD #1 and can be viewed by clicking the HELP Button.

Starting a New Project

1. Click the “New Project” icon in the speaker grill area of the Video Studio interface.
2. Give your project a name.
3. Select the AVI: 720 x 480, 29.97 fps, DV NTSC template for North American users (Select AVI: 720 x 576, 25 fps, DV PAL for Europe, South America and Australia)
4. Use the default location or change the location of where you want

your movies and project information to be stored.

5. Once you click OK you will be taken to Capture Mode(if your camcorder is connected and turned on in VCR/VTR mode). If you are not taken to Capture Mode, then Video Studio is not properly recognizing your camcorder, or you opened an existing project and therefore will go directly to Storyboard mode.

Capturing Motion Video

6. In Capture Mode, if you have selected the proper device control setting, you will be able to play, stop, rewind and fast forward your camcorder from the VCR type controls on the Video Studio interface. If these controls are grayed out, be sure Windows is detecting your camcorder and that you have selected the proper device control setting.
7. Click the PLAY button. Your camcorder should go into the play mode and you will see video in the preview window. You will hear audio only from your camcorder while capturing video.
8. Click on the Red Video Capture button to begin recording video to your computer hard drive. Hit the "ESC" key on your keyboard to end a capture. The captured video will appear in the Storyboard below the preview window. If you selected "Capture to Library", a thumbnail image of the capture will appear in the video library. You can then easily access this video file while within any project. If your camcorder has an LCD display, use this as preview monitor. Video in the Video Studio preview window may appear slightly slower than on your camcorders LCD display. This does not mean that you are not getting a good capture.
9. The "+", "-" indicators show how many frames have been captured or dropped.
10. You can play, fast forward, capture, stop capture (ESC), stop, play, capture, stop capture (ESC) as many times as you like during a session. Each capture will be displayed as a separate clip under the preview window.

Still Image Capture

11. Click on the "Photo" button to capture a still image.
12. You can capture several Still images by clicking the "Photo" button repeatedly.
13. You can alternate between motion capture and still image capture

while the camcorder is in play mode..

14. Still images are captured at 720 x 480 24 bit, bitmap images

15. Still images can be viewed in any photo software such as the “PAINT” program on every Windows computer. You can also save as .jpg images from the Paint program and you can print the image from this application as well.

File Size Limitations

4 Gigabytes = 18 minutes of DV

If you are using Windows 98 with the FAT32 file system the largest size file allowed by Windows is 4 Gigabytes. DV Video is captured at about 3.6 Mega Bytes per second. This means that you will hit this 4 Gigabyte file size limit in about 18 minutes. Thus any single capture you do can be no longer than 18 minutes. Also, any single movie you create with a series of movie clips can be no longer than 18 minutes. This is not a limitation of the PYRO card or Video Studio or Media Studio Pro, but a limitation of the operating system. The “DV Smart Play” feature helps you to get around this limitation. Read about “DV Smart Play” below.

Other ways that you can create longer movies is by saving in a compressed video format such as MPEG 1, VCD, MPEG 2 or Quick Time, but remember that only DV encoded video can be transmitted back to the digital camcorder.

Saving Your Project

Save your project often to keep all settings, titles and effects you have created for your movie. Save your Project in the “FINISH” Step. Click the diskette icon to save your project.

Saving Your Movie

Once you have gone through all the steps to create your movie, Capture, Storyboard, Effects, Titles, Voice, Music, you will come to the finish step. In the Finish step you will RENDER all of the video clips, music and effects into one video file.

- 1.** A movie clip must be in the Storyboard or Time Line for the “Make Movie” icon to become active.
- 2.** Select the “Make Movie” icon

3. Give your movie a name
4. Choose the "Save As Type". Here you can choose from many video file types. Choose the file type you desire for your video output. ONLY .AVI that is DV Encoded can be transmitted back to the camcorder.
5. Click "Options"
6. Select the options you want for your movie, Resolution size, and compression method.
7. The default settings for .AVI will save your movie in the DV encoded format.
8. Click "Save" to begin rendering your new movie file. Render time will depend on several variables such as the addition of voice, music, titles and effects. The more changes to the original video clips, the more changes there are to render into the finished movie file. Also, if you are compressing the video and/or changing video resolution, render time may be extended.

Sending Your Movie Back to the Camcorder

1. "Make Movie" into a DV encoded .AVI file.
2. The movie will be stored in the Video Library. Click on the video you want to transmit so it appears in the preview window.
3. The "Export Video Clip" icon will now be highlighted. Be Sure you select "TI 1394 Record" or "MS 1394 Record" (which ever corresponds to the camcorder driver you are using).
4. Click on the "Export Video Clip" icon.
5. The "DV Recording Preview Window" dialog box will open. At this point your can preview the video you want to record to your camcorder.
6. Click Next to move to the Record dialog box.
7. The controls in this dialog box will control your camcorder. Advance the tape to the location you want to record you movie. Be careful not to record over any existing footage you want to keep.
8. Click the "RED" record button to begin recording the movie on your camcorder. Your camcorder should begin recording the movie to tape.
9. You will not see any video in the preview windows during the recording. Use your camcorder LCD as the recording monitor.
10. When the recording is complete, click "Finish" to close the dialog box.

The result in your camcorder is a 100% digital, first generation, loss-less

video production. You have just created a video that is truly broadcast quality. The movies you can create with the PYRO 1394DV are the same quality as movies created with systems costing hundreds, even thousands of dollars more.

DV Smart Play

DV Smart Play allows you to transmit video to your digital camcorder without saving as a new movie file. This feature helps get you around the 4 GB file size limit. You can place several long movie clips in the timeline and transmit the contents of the entire timeline out to your digital camcorder.

DV SmartPlay allows you to play your project directly from the timeline out to a DV camcorder or other 1394 device without rendering a final movie file.

DV SmartPlay also lets you view your project on an external monitor at any time.

Using DV SmartPlay
a - Connect your DV camcorder or other 1394 device to the PC and power it on. (For better results ensure that the camcorder is on Pause rather than Stop before playback).
b - Record roughly a second of blank video at the beginning of your project for better results.
c - Press Record on your camcorder and then press Play Project in VideoStudio.
Note: You will not see a preview in the Preview window. To see video in the Preview window, simply disconnect or power off your camcorder. To return to viewing on the camcorder, just plug it back in or power it

It's a Wrap!

You should now be well on your way to successfully using the PYRO 1394DV with the Video Studio 4 software. If you are having any difficulties, please refer to the HELP RESOURCES listed below. We hope you enjoy using PYRO.

Tips for Smooth Video Capture

If your system is not optimized, the result may be dropped video frames. Video with dropped frames will look jittery and will have audio dropouts. To ensure that you capture the highest quality video you may want to follow these steps:

1. Run Disk Defragmenter. Creating, modifying and deleting files causes fragmentation of your hard drive. When files are fragmented, it takes longer to read or write files. You should defragment your hard disk every two weeks to maintain an optimal disk.
 - A. Close all applications
 - B. Click Start
 - C. Click Program
 - D. Click Accessories
 - E. Click System tools
 - F. Click Disk Defragmenter
 - G. Select the drive you would like to defragment.

Depending upon the size and speed of your hard drive, this process could take up to an hour or more.

2. Don't run other applications while you are capturing video to your hard disk. You may want to close some of those little applications hiding in your system tray.
3. Change your "Typical Role" settings from desktop computer to Network Server.

This will increase the size of the file and directory cache. This results in increased speed when accessing the hard disk.

- A. Right click on "My Computer"
- B. Click Properties
- C. Click Performance
- D. Click File System
- E. Click arrow next to "Typical Role of this machine" and select "Network Server"

- F. Click and drag the “Read Ahead” optimization slider all the way to full.
- G. Click OK
- H. You must restart your machine for these changes to take effect.

4. Be sure that DMA is enabled for IDE hard disks.

DMA access has lower CPU overhead and transfers of data faster.

Note: Not all hardware supports DMA access. If DMA is not supported by your hardware you will need to restart your PC in safe mode to disable DMA.

- A. Right click on “My Computer”
- B. Click Properties
- C. Click Device Manager tab
- D. Double Click Disk Drives
- E. Double click your hard disk. It will be labeled Generic IDE Disk type XXX.
- F. Click the settings tab
- G. Enable DMA by clicking the mouse in the DMA box.
- H. Click OK
- I. Click OK

Audio Tips

To hear Audio when Recording:

When recording video the only audio that you will hear is audio from the camcorder. For many camcorders you can hear the audio when the LCD display is open. Audio is automatically recorded with the video. You will hear audio when you play back the captured video recording.

Using an external Microphone on your camcorder:

If you plan to use an external microphone connected to the MIC jack on your camcorder, we strongly recommend that you use a STEREO Microphone. The audio quality will be better and since your camcorder is recording in stereo, you will want your MIC input to match the rest of the audio.

Set you camcorder audio to match the Video Studio audio:

We have found that selecting 16-bit stereo audio is the best match to Video Studio. If you record your videotapes in 16-bit stereo you should have excellent results. In turn, be sure to set the Video Studio audio record settings to PCM 16-bit stereo or CD quality for the best results.

To Record CD Audio in Music Step:

Before recording CD music for background audio, be sure to check your computers audio mixer.

1. Double click on the small speaker icon at the bottom right of your computer screen.
2. Click on Properties, Select Record. Be sure that the CD mixer is selected as the recording source.

To Record voice-overs in Voice Step:

Before recording CD music for background audio, be sure to check your computers audio mixer.

1. Double click on the small speaker icon at the bottom right of your computer screen.
2. Click on Properties, Select Record. Be sure that the MIC mixer is selected as the recording source.

PAL DV Camera Information*

Due to European Trade Regulations, the ability to record DV Video back to the DV CAMERA from an outside source like the PYRO is DISABLED. To solve this issue, the following third party products are available from the following companies:

DATAVISION (UK)

Website: http://www.datavision.co.uk/dv_in.htm

ADAPTIVE SYSTEMS GMBH (AUSTRIA)

Website: <http://members.telecom.at/~erpar/Lremote.htm>

DV2000

Website: <http://www.ifrance.com/dv2000/>

ADS Technologies does not guarantee the compatibility of these products with your camcorder. Please verify compatibility with the companies above before you buy.

**** This applies to European Pal Camcorders only.***

HELP RESOURCES

Video Studio Help – Touch “F1” on your keyboard at any time.

Video Studio User Manual – on PYRO CD #1

Video Studio Guide – Turn this on by clicking on “G” (global properties) and selecting preferences.

ADS Web Site

www.adstech.com

ON-LINE HELP

We are constantly adding more information to the On-Line Help section of our web site. Click the “Support” button on the home page or the “Technical Support” button on any ads web page. Click on the PYRO – ON-Line HELP. Here you will find many answers to commonly asked questions.

SOFTWARE UPDATES

We are constantly updating camcorder drivers, adding utilities or posting bug fixes or patches in the DOWNLOADS section of our web site. Click the “Support” button on the home page or the “Technical Support” button on any ads web page. Click on PYRO – SOFTWARE link. Here you will find the latest drivers and updates to PYRO.

Resources on the Web

Web page with ADS PYRO 1394 stills & info

<http://www.price98.freemove.co.uk/>

Forum with tips & info for the ADS PYRO & Ulead VS & MS Pro 6

<http://pub9.ezboard.com/bpyro1394>

ADS Technologies, Inc. Forum on the WWUG (World Wide User Groups)

<http://www.wwug.com/forums/ads-tech/index.htm>

Media Studio Pro Forum on the WWUG:

<http://www.wwug.com/forums/uleadmediastudio/index.htm>

For Specific Video Studio software questions:

Check the Ulead web site:

www.ulead.com

E-mail Ulead for help:

<http://www.ulead.com.tw/ulead/suppform.cfm>

Call Ulead for help:

1-310-896-6391

For PYRO Hardware questions:

Check the ADS web site:

www.adstech.com

E-mail ADS for help:

support@adstech.com

Call ADS for help:

1-562-926-4338

Support Hours:

M-F 8:00 AM – 5:00 PM PST

Service and Warranty:

Service:

If you require assistance with the installation, operation, or application of your ADS Technologies, Inc. product there are several options available to you as described in the technical support section of this manual. Your primary source for information and assistance is always your computer store or computer parts dealer. If your ADS product needs repair or replacement, contact your dealer for on-site repair service.

The ADS Technologies technical support and customer service staff can aid in solving many problems. Our technical support department is available to repair any ADS Technologies product. You or your dealer must return products to our factory for repair or warranty replacement.

Return/Replacement:

If you need to return your ADS Technologies product you should return the product directly to the dealer or store where you purchased the product. Each individual computer store or dealer sets product returns policies for their customers. ADS Technologies, Inc. cannot be responsible for the actions or policies set by our dealers. If you desire to return the product for a refund, you must get the refund from the dealer or store you purchased the product from. If you purchased the product directly from ADS please see the "Terms and Conditions of Sale" on the reverse side of your sales invoice.

Returns to ADS Technologies, Inc. are for repair or warranty replacement only. If you need to return product to ADS Technologies, Inc. for repair or replacement you must follow these steps:

1. Call our Technical Support department at (562) 926-4338 to obtain a Return Merchandise Authorization (RMA) number.
2. The RMA number is valid for 30 days.
3. Ship the product to the ADS factory with the RMA number marked on the inside and outside of the package. If there is no RMA number on the package or the RMA number has expired, the shipment will be refused. ADS will not be liable for lost or mis-shipped products.
4. Replacement product cannot be shipped to you until the defective product has been received by ADS.
5. Once the product is received at the factory it will be tested and then repaired or replaced.
6. Turn around time is approximately one week. A repaired or replacement product will be shipped back to you.

Warranty:

This ADS Technologies, Inc. product comes with a One (1) year hardware warranty. ADS Technologies, Inc. (ADS) warrants this product against defects in material and workmanship for a period of One (1) year from the date of original purchase from ADS or an authorized ADS dealer. This warranty applies only to the original purchase of the product and is not

transferable. This warranty does not cover any incompatibilities due to the user's computer, hardware, software or other related system configuration in which the product interfaces.

Proof of

purchase will be required before any warranty consideration by ADS occurs.

This warranty does not cover any damage caused by negligence, non-authorized modifications, or parts installed without prior written permission from ADS.

This warranty does not apply if the product has been damaged by accident, abuse, or misapplication, nor as a result of service to the product by anyone other than ADS.

If your ADS product is not in working order, your only recourse is repair or warranty replacement, as described above. UNDER NO CIRCUMSTANCES will ADS Technologies, Inc. be liable for consequential damages, including but not limited to any lost savings, lost profits, or any other damages, caused by the use of any ADS Technologies, Inc. product or inability to use the product, even if the dealer or ADS Technologies, Inc. has been advised of such liability or other claims. This includes damage to property and, to the extent permitted by law, damages for personal injury. This warranty is in lieu of all other warranties including implied warranties of merchantability and fitness for a particular purpose.

FCC Information

Federal communications Commission Radio Frequency Interference Statement

Note: This equipment has been tested and found to comply with the limits for a class B digital device, pursuant to Part 15 of the FCC Rules. These limits are designed to provide reasonable protection against harmful interference when the equipment is operated in a residential installation. This equipment generates, uses and can radiate radio frequency energy and if not installed and used in accordance with the instruction manual may cause harmful interference to radio communications. However, there is no guarantee that interference will not occur in a particular installation. If this equipment does cause harmful interference to radio or television reception, which can be determined by turning the equipment off and on, the user is encouraged to try to correct the interference by one or more of the following measures:

- * Reorient or relocate the receiving antenna
- .
- * Increase the separation between the equipment and receiver.
- * Connect the equipment into an outlet on a circuit different from that to which the receiver is connected.
- * Consult the dealer or an experienced radio TV technician for help.

Notice:

(1) The changes or modifications not expressly approved by the party responsible for compliance could void the user's authority to operate the equipment.

(2) Shielded interface cables and AC power cord, if any, must be used in order comply with the emission limits.

North America Office

12627 Hidden Creek Way

Cerritos, CA 90703

Phone: (562) 926-1928

Fax: (562) 926-0518

Support: (562) 926-4338

European Office

Shannon Industrial Estate

Shannon Co. Clare, Ireland

Phone: +353.61.702042

www.adstech.com