



Avocent®

Cyclades® PM IPDU

Installer/Administrator/User Guide



FCC Warning Statement

The Cyclades PM IPDU has been tested and found to comply with the limits for Class A digital devices, pursuant to Part 15 of the FCC rules. These limits are designed to provide reasonable protection against harmful interference when the equipment is operated in a commercial environment. This equipment generates, uses, and can radiate radio frequency energy and, if not installed and used in accordance with the Installation & Service Manual, may cause harmful interference to radio communications. Operation of this equipment in a residential area is likely to cause harmful interference in which case the user is required to correct the problem at his or her own expense.

Canadian DOC Notice

The Cyclades PM IPDU does not exceed the Class A limits for radio noise emissions from digital apparatus set out in the Radio Interference Regulations of the Canadian Department of Communications.

Le Cyclades PM n'émet pas de bruits radioélectriques dépassant les limites applicables aux appareils numériques de la classe A prescrites dans le règlement sur le brouillage radioélectrique édicté par le Ministère des Communications du Canada.





Cyclades[®] PM IPDU

Installer/Administrator/User Guide

Avocent, the Avocent logo, The Power of Being There, Cyclades and DSR are registered trademarks of Avocent Corporation or its affiliates. All other marks are the property of their respective owners.

© 2007 Avocent Corporation. All rights reserved. 590-667-501B



Instructions

This symbol is intended to alert the user to the presence of important operating and maintenance (servicing) instructions in the literature accompanying the appliance.



Dangerous Voltage

This symbol is intended to alert the user to the presence of uninsulated dangerous voltage within the product's enclosure that may be of sufficient magnitude to constitute a risk of electric shock to persons.



Power On

This symbol indicates the principal on/off switch is in the on position.



Power Off

This symbol indicates the principal on/off switch is in the off position.



Protective Grounding Terminal

This symbol indicates a terminal which must be connected to earth ground prior to making any other connections to the equipment.

TABLE OF CONTENTS

List of Figures	vii
List of Tables	ix
Chapter 1: Introduction	1
<i>Features and Benefits</i>	<i>1</i>
<i>Alarms and monitoring</i>	<i>1</i>
<i>Sequential power application</i>	<i>1</i>
<i>Support for daisy chaining</i>	<i>1</i>
<i>Integration with Avocent management products</i>	<i>2</i>
<i>Hardware Configuration Options.....</i>	<i>2</i>
<i>Standalone configuration</i>	<i>2</i>
<i>Daisy chained configuration.....</i>	<i>3</i>
<i>Integrated configuration.....</i>	<i>3</i>
Chapter 2: Installation	5
<i>Getting Started.....</i>	<i>5</i>
<i>Supplied with the PM IPDU</i>	<i>5</i>
<i>Modular input power cables for the PM IPDU</i>	<i>5</i>
<i>Optional outlet cable package</i>	<i>6</i>
<i>Rack Mounting the PM IPDU.....</i>	<i>6</i>
<i>Installation environment.....</i>	<i>7</i>
<i>Daisy Chaining PM IPDUs</i>	<i>8</i>
<i>Accessing the Console</i>	<i>9</i>
<i>Direct console access</i>	<i>9</i>
<i>Console access through a management device</i>	<i>9</i>
<i>Configuring the PM IPDU.....</i>	<i>10</i>
<i>Default configuration parameters</i>	<i>10</i>
<i>Initial configuration using the command prompt</i>	<i>10</i>
<i>Resetting the admin password</i>	<i>11</i>
<i>Upgrading the PM IPDU firmware.....</i>	<i>11</i>
Chapter 3: Accessing the PM IPDU via the Command Line Interface.....	13
<i>PM IPDU User Interface.....</i>	<i>13</i>

<i>Daisy chained PM IPDUs in the login prompt.....</i>	<i>13</i>
<i>Logging in to the PM IPDU.....</i>	<i>13</i>
<i>Commands</i>	<i>14</i>
Appendices.....	37
<i>Appendix A: Specifications</i>	<i>37</i>
<i>Appendix B: Safety Instructions.....</i>	<i>39</i>
<i>Appendix C: Circuit Breakers.....</i>	<i>43</i>
<i>Appendix D: Technical Support.....</i>	<i>49</i>

LIST OF FIGURES

<i>Figure 1.1: Standalone Configuration</i>	2
<i>Figure 1.2: Daisy Chained PM IPDUs with an Avocent Management Device</i>	3
<i>Figure 2.1: Rack Mount Bracket Installation on a PM IPDU</i>	6
<i>Figure 2.2: A Sample PM IPDU (PM42 Shown)</i>	8
<i>Figure C.1: PM10-L30A IPDU Circuit Breakers</i>	44
<i>Figure C.2: PM10i-L30A IPDU Circuit Breakers</i>	45
<i>Figure C.3: PM20-L30A IPDU Circuit Breakers</i>	46
<i>Figure C.4: PM20i-L30A IPDU, PM20i-32A IPDU and PM20i-32Au IPDU Circuit Breakers</i> ...	47

LIST OF TABLES

Table 1.1: Standalone Configuration Descriptions..... 2

Table 2.1: PM IPDU Shipping Box Contents and Description..... 5

Table 2.2: PM IPDU Optimum Installation Environment..... 7

Table 2.3: Cyclades PM42 IPDU Callout Descriptions..... 8

Table A.1: PM IPDU Specifications..... 37

Table A.2: PM42 IPDU Specifications..... 38

Table A.3: Pinouts for IN and OUT RS-232 Serial Ports..... 38

Table C.5: Circuit Breaker Trip Time 48

Table C.6: PM42 IPDU Shutdown Time 48

Introduction

This installation, administration and user's guide provides background information and procedures for installing, configuring and maintaining the Cyclades® Power Management (PM) Intelligent Power Distribution Unit (IPDU) family.

The Cyclades PM IPDU enables remote power control of servers and network gear. When used in conjunction with DSR® switches or console servers, the PM IPDU delivers easier management capabilities and faster problem solving by integrating console/KVM access and power control into one single interface.

The following sections describe general features common to all PM IPDU models and point out specific features of certain units.

Features and Benefits

Alarms and monitoring

The PM IPDU delivers accurate, real-time global current monitoring of all connected devices via the user interface screen or locally through an LED digital display. Users have the ability to set a current alarm threshold that, once exceeded, will cause the PM IPDU to sound an alarm or send a notification message, or both.

Sequential power application

The PM IPDU incorporates a sequential power application feature that prevents all power outlet receptacles from turning on at once, eliminating the potential of current surges that could render the equipment inoperable. Together with the global current monitoring, the sequential power application feature lets users safely install more equipment on existing power circuits without the worry of current overloads.

Support for daisy chaining

The IPDU has a fixed number of power outlet receptacles, but with daisy chaining capabilities, users may increase capacity by connecting the control interfaces of several PM IPDUs in a series.

Integration with Avocent management products

The PM IPDU can be combined with an ACS console server or DSR KVM switch to provide enhanced functionality. Please refer to the appropriate product documentation for more information on how to use the PM IPDU with your specific implementation.

Hardware Configuration Options

The PM IPDU may be used in one of three hardware configurations:

- Standalone – Managed independently of any other hardware device.
- Daisy chained - Multiple PM IPDUs connected to one another and managed by one main PM IPDU.
- Integrated – Managed by a console server or a KVM switch.

Standalone configuration

In a standalone configuration, the PM IPDU operates independently of any other hardware. The following graphic displays a PM IPDU with the console port connected to a computer running terminal emulation.

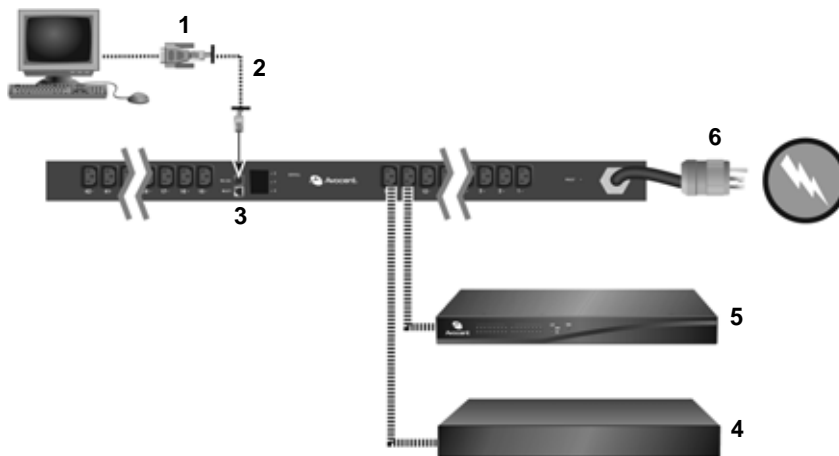


Figure 1.1: Standalone Configuration

Table 1.1: Standalone Configuration Descriptions

Number	Description	Number	Description
1	RJ-45 to DB-9F Adaptor (Optional)	4	Server
2	RJ-45 Cable	5	Switch
3	IN Port	6	Power Source

NOTE: The installation example displays the PM IPDU being connected with the RJ-45 to DB-9F adaptor that is shipped with the product. If the unit you are connected to does not have a DB-9M COM port, you may use a USB serial adaptor and connect to a USB port when possible.

Daisy chained configuration

In a daisy chained configuration, multiple PM IPDUs are connected to one another and managed by a single main PM IPDU. The PMs are linked together with RJ-45 cables connected through the PM IPDU's IN and OUT ports. The following example shows three PM IPDUs operating in a daisy chained environment. PM IPDU #1 is connected to the local workstation and is the "main" PM IPDU.

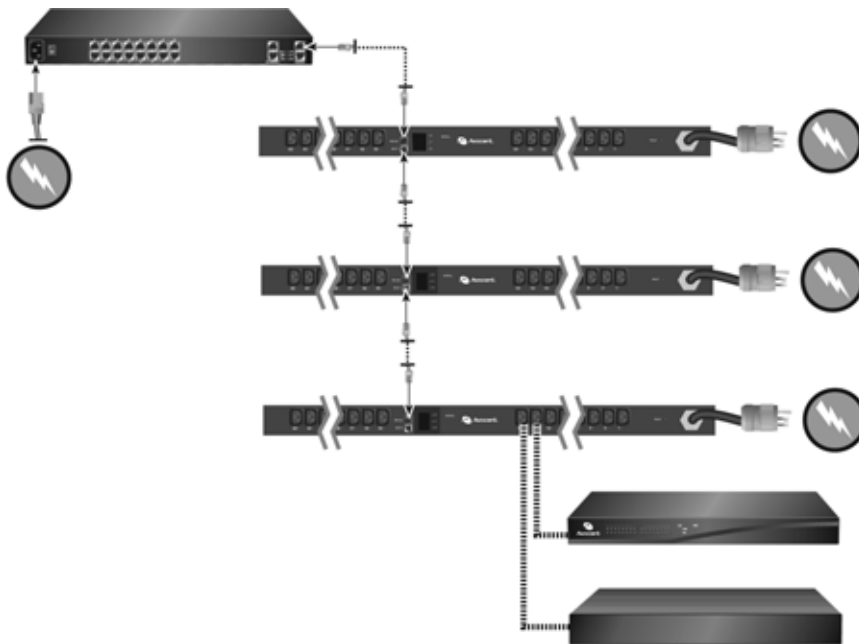


Figure 1.2: Daisy Chained PM IPDUs with an Avocent Management Device

Integrated configuration

In an integrated configuration, the PM IPDU is configured to work in conjunction with an Avocent management product.

A user connects to the PM IPDU by accessing the appropriate console port of the Avocent management product. In this scenario, software configuration on and monitoring of the PM IPDU is done through the Avocent management product and not on the PM IPDU itself. Visit www.avocent.com for more information.

Getting Started

Collect the following equipment prior to installing and configuring the PM IPDU in standalone configuration:

- One or more RJ-45 to RJ-45 straight-through cables
- An RJ-45 to DB-9F straight-through adaptor
- A PC running a terminal emulation program

Supplied with the PM IPDU

Table 2.1: PM IPDU Shipping Box Contents and Description

Description	Purpose
PM IPDU Quick Installation Guide (QIG)	Basic installation guide in printed format.
RJ-45 to RJ-45 7ft. straight through CAT5 cable	Used for the following: Along with an adaptor, to connect a terminal or PC to the IN port. To connect to a Cyclades console or KVM management device. To connect to another PM IPDU in a daisy chain.
RJ-45 to DB-9F straight-through adaptor	Along with an RJ-45 cable, used to connect a terminal or PC to a PC's COM port.
RJ-45 loopback connector	Used to gain temporary access to the PM IPDU.
PM IPDU to DSR switch cable adaptor	Used to connect a PM IPDU to an Avocent switch's SPC port.
Mounting brackets and screws (2 spares) for PM10 IPDU and PM10i IPDU	Use to mount the Cyclades PM10 IPDU and PM10i IPDU to a rack or wall.

Modular input power cables for the PM IPDU

If your PM IPDU model does not have a fixed power input cable, it may ship with a modular cable. Depending on your site's location, the modular input power cables included in the box vary.

NOTE: The Cyclades PM 10i-32Au IPDU ships with an unterminated power cord. If necessary, contact Avocent Technical Support for guidelines on approved power plug installation.

Optional outlet cable package

The following cable packages may be ordered separately for the IEC PM IPDU models:

- 8-outlet cables (C13 female to C14 male)
- 10-outlet cables (C13 female to C14 male)

Rack Mounting the PM IPDU

You may mount the PM IPDU on a rack or wall or place it on a desktop or other flat surface. Two brackets are supplied with six Phillips screws for attaching the brackets to the PM8i IPDU, the PM10 IPDU and the PM10i IPDU for mounting.

If you are mounting the PM IPDU, obtain a Phillips screwdriver and appropriate nuts and bolts before mounting the PM IPDU.

NOTE: When mounting a PM IPDU zero U model to a wall stud, securely mount it by using a #10 (4.8 mm or 0.19 in or 3/16 in) or larger screw or use a drywall fastener rated min. 25 lb. (11.34 kg).

The following graphic depicts the orientation of the brackets for front rack mounting a PM IPDU.

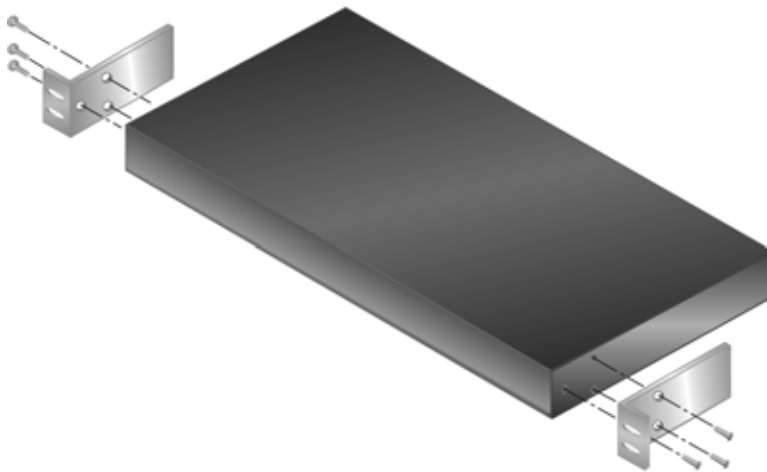


Figure 2.1: Rack Mount Bracket Installation on a PM IPDU

Installation environment

When installing the PM IPDU, ensure that the following environment specifications are met.

Table 2.2: PM IPDU Optimum Installation Environment

Environment Factor	Recommendation
Temperature	The manufacturer's maximum recommended ambient temperature for the PM IPDU is 122 °F (50 °C).
Elevated Operating Ambient Temperature	If the PM IPDU is installed in a closed or multi-unit rack assembly, the operating ambient temperature of the rack environment may be greater than room ambient temperature. Therefore, consideration should be given to installing the equipment in an environment compatible with the manufacturer's maximum rated ambient temperature. See above.
Reduced Air Flow	Installation of the equipment in a rack should be such that the amount of air flow required for safe operation of the equipment is not compromised.
Mechanical Loading	Mounting of the equipment in the rack should be such that a hazardous condition is not created due to uneven mechanical loading.
Circuit Overloading	Consideration should be given to the connection of the equipment to the supply circuit and the effect that overloading of circuits might have on overcurrent protection and supply wiring. Appropriate consideration of equipment nameplate ratings should be used when addressing this concern.
Reliable Grounding	Reliable grounding of rack-mounted equipment should be maintained. Particular attention should be given to supply connections other than direct connections to the branch circuit, such as power strips or extension cords.

NOTE: Install a PM IPDU 0U model in a location where there is an adjacent and accessible socket outlet.

CAUTION: The plug on the power cord of the PM IPDU is used as the disconnect device.

To mount the PM10 IPDU or PM10i IPDU:

1. Using a Phillips screwdriver, attach the supplied brackets to the sides of the PM IPDU.
2. Use the mounting hardware recommended for your rack to mount the PM IPDU.

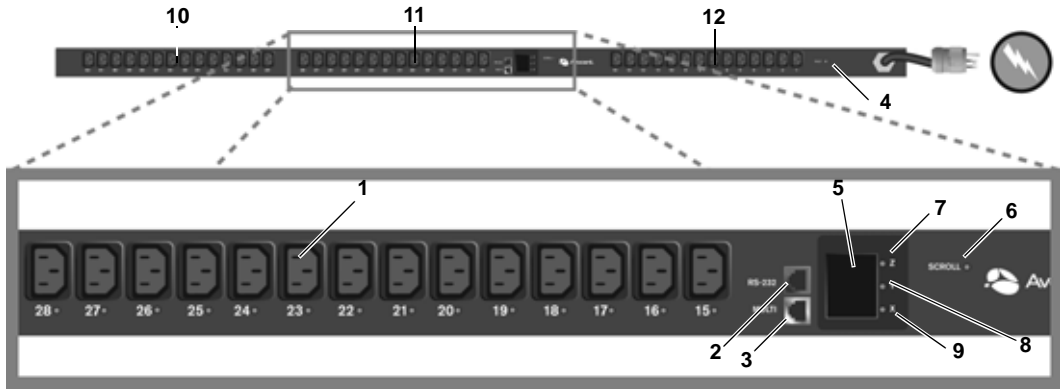


Figure 2.2: A Sample PM IPDU (PM42 Shown)

Table 2.3: Cyclades PM42 IPDU Callout Descriptions

Number/Letter	Description
1	Outlet, IEC320-C13, 14 each for bank XY, YZ and XZ
2	RS-232 (IN) Port
3	MULTI (OUT) Port
4	Overload Reset Button
5	Three digit LED displays the current on Phase X, Y and Z in sequence, or the voltage across Phases X and Y, Y and Z, and X and Z in sequence
6	SCROLL button - manually toggles display when the display command is set to lmanual or Vmanual (see <i>display</i> on page 20)
7	LED indicates when Phase X current is displayed
8	LED indicates when Phase Y current is displayed
9	LED indicates when Phase Z current is displayed
10	Phase X
11	Phase Y
12	Phase Z

Daisy Chaining PM IPDUs

You may manage a maximum of 128 outlets by connecting multiple PM IPDUs to the main PM IPDU device.

To daisy chain a PM IPDU:

This procedure assumes that a main PM IPDU is already connected to a workstation or management appliance.

1. Connect one end of an RJ-45 cable to the OUT port of the main PM IPDU, which is connected to a workstation or management appliance.
2. Connect the other end of the RJ-45 cable to the IN port of the secondary Cyclades PM IPDU.
3. Repeat these steps until you have connected the desired number of PM IPDUs.

Accessing the Console

Users and administrators may access the PM IPDU either by making a direct console connection to the PM IPDU's IN port or by connecting the PM IPDU to an Avocent console or KVM switch management device.

Direct console access

While using the PM IPDU device independently of other Avocent devices, local users may connect directly to the system console port (the IN port) of the PM IPDU using the console cable with the corresponding adaptor(s).

The system administrator must specify basic settings on the PM IPDU before users may connect to and manage the unit and the connected devices. To perform necessary basic configuration, make a direct connection to the PM IPDU by connecting a terminal or computer to the IN port.

To access the console:

Perform the following steps to connect a computer to the console port of the PM IPDU. This procedure assumes that you know how to use a terminal emulation program.

1. Connect an RJ-45 serial cable to the IN port on the PM IPDU.
2. Connect the RJ-45 serial cable to a computer with a terminal emulation program using the RJ-45 to DB-9F straight-through adaptor or a USB serial adaptor.
3. Using a terminal emulation program, connect to the PM IPDU with the following settings: ANSI emulation, 9600 bps, 8 bits, no parity, 1stop bit and no flow control.

When prompted, enter the username **admin** with the default password **pm8**.

If this is a first-time installation, see *Initial configuration using the command prompt* on page 10 for instructions on changing the default password, adding users and assigning outlets to users.

Console access through a management device

By integrating the PM IPDU device with an Avocent console or KVM switch management device such as DSView 3 software or Cyclades ACS, remote users may access the PM IPDU's console port through a menu-driven interface. Using Telnet or SSH through the console server, type the

power management hotkey (**Ctrl+P** by default) to activate a power management menu. Please refer to the appropriate product documentation for more information.

To connect a PM IPDU to an Avocent DSR switch:

Use the included RJ-45 cable adaptor to connect a PM IPDU to an Avocent DSR switch.

1. Plug the male end of the adaptor into the DSR switch's SPC port.
2. Plug one end of a straightthrough CAT 5 cable into the female end of the adaptor.
3. Plug the other end of the CAT 5 cable into the PM IPDU's IN port.

Configuring the PM IPDU

The PM IPDU may be configured by any one of two methods:

- Command Prompt - Full configuration capabilities
- Browser or text based menu - Available only when the PM IPDU is connected to a management device

For information about integrated use with an Avocent management device visit www.avocent.com or refer to the documentation relevant to that product family.

Default configuration parameters

The PM IPDU's default configuration is as follows:

- User is admin.
- Admin user's password is pm8.
- All outlets are un-named.
- All outlets are unassigned to user.
- All outlets are turned on.
- All outlets are unlocked.

Initial configuration using the command prompt

To change the default admin password (if pm8 is in use):

1. Log in to the PM IPDU using the default username **admin** and password **pm8**.
2. Enter the **passwd** command.
3. Enter a new password when prompted.

To create users with the adduser command:

1. Log in to the PM IPDU.
2. Enter the **adduser** command followed by the new username.
3. Enter the password when prompted.

To assign outlets to users with the assign command:

1. Log in to the PM IPDU.
2. Enter the **assign** command followed by the outlet number(s) and username.

Example:

```
pm>assign 2 jane
Outlet 2 assigned to jane.
```

To name the outlets with the name command:

1. Log in to the PM IPDU.
2. Enter the **name** command followed by the outlet number and desired name of the outlet.

Example:

```
pm>name 2 chispa
2: Outlet now named chispa
```

To save the configuration with the save command:

1. Log in to the PM IPDU.
2. Enter the **save** command to save the configuration.

Resetting the admin password

In the event the administrator wants to reset the password for the PM IPDU (for example, if the administrator forgets the admin password), then the loopback connector that is shipped with the PM IPDU may be used for temporary access to the PM IPDU.

To reset the admin password using the loopback connector:

1. If you are not logged out, log out by entering **exit**. (You must be at the login prompt for this to work.)
2. Connect the loopback connector shipped with the PM IPDU to the OUT port.
3. Check the display. If you are watching the PM IPDU's console output, your status will be reported.
4. After one minute, you may remove the loopback connector. The password for the user admin is reset to the default (pm8), and you should be able to log into the PM IPDU using the default username/password. For maximum security, the admin password should be changed as soon as possible.

Upgrading the PM IPDU firmware

The upgrade procedure described here is only valid for units that are currently running firmware versions 1.3.0 or greater. If your PM IPDU is running an older firmware version, please follow the instructions in the manual that corresponds to the firmware currently installed on the PM IPDU.

To upgrade PM IPDU firmware:

1. Download the new PM IPDU firmware from the Avocent web site.
2. Using terminal emulation software, log into the PM IPDU as admin and type in the command:

```
pm>upgrade <IPDU#>
```

The <IPDU#> is the number of the IPDU to which you want to upgrade the firmware. If you have only one PM IPDU, type **upgrade 1**. If you have, for instance, three units in a daisy chain, type **upgrade 3** or **upgrade 2** depending on which unit you want to upgrade.

NOTE: If you have a daisy chain and you want to upgrade all units, you should start from the last unit and work your way towards the first.

3. At the boot loader menu, select option 1 to upgrade the firmware.

The boot loader erases the firmware currently in the unit and asks you to upload the new firmware.

4. Use your terminal emulator program to upload the PM IPDU firmware file to the PM IPDU using the Xmodem protocol.

For information about using a different terminal emulator, please refer to the documentation provided by the manufacturer on how to transfer files using the Xmodem protocol.

When the file transfer is complete, the PM IPDU console displays the login prompt. You may log into the PM IPDU and perform actions as usual.

If the file transfer fails, an error message appears on the PM IPDU console, and the boot loader menu is displayed again so you may redo the firmware upgrade process.

In this case, select option 1 from the menu and repeat the firmware upload procedure. If the problem persists, contact Avocent Technical Support for assistance.

Accessing the PM IPDU via the Command Line Interface

When using the PM IPDU independently of other Cyclades products, users and administrators may access the PM IPDU command line interface through a terminal emulation program.

PM IPDU User Interface

You may access the PM IPDU user interface by following the instructions provided in *Direct console access* on page 9. Depending on the PM IPDU's boot status, either the Boot Menu or the Login Prompt will appear.

On the Boot Menu, you may enter **2** (or just wait approximately 12 seconds) to activate the Login Prompt.

Daisy chained PM IPDUs in the login prompt

Number of PM IPDUs

If no PM IPDUs are daisy chained, the [PM]: IPDU: line appears only once, and the value is 1.

If there are any PM IPDUs daisy chained to the first PM IPDU, the [PM]: IPDU: line appears once for each PM IPDU in the chain. For each PM IPDU, the value is incremented by 1. The final appearance of the [PM]: IPDU: line will show the total number of PM IPDUs in the daisy chain.

Number of PM IPDU outlets

If no PM IPDUs are daisy chained, the [PM]: OUT: line appears only once, and the value is equal to the number of outlets on the PM IPDU.

If there are any PM IPDUs daisy chained to the first PM IPDU, the [PM]: OUT: line appears once for each PM IPDU in the chain. For each PM IPDU, the value shows the cumulative total of outlets until the total number of outlets for the entire chain is displayed.

Logging in to the PM IPDU

When prompted, enter your username and password.

NOTE: If there are daisy chained PM IPDUs, you will need to press **Enter** after the final [PM]: OUT: line appears.

After a successful login, the PM IPDU command prompt appears after which you may use any of the commands described in this chapter.

Commands

NOTE: When a range of outlets is used in a command and the range spans more than one PM IPDU in a daisy chain, the range of outlets must *not* be specified by name. The range of outlets may only be specified by number in this situation.

adduser

The adduser command adds one username to the internal database. A maximum of eight characters (not case sensitive) is allowed, and a maximum of eight individual users is allowed. This command is available to the admin user only.

Syntax

```
adduser <user>
```

Arguments

```
<user> username
```

Examples

To add a user, enter:

```
pm>adduser popper
```

alarm

The alarm command sets and reads the current threshold. This command is available to the admin user only.

Syntax

```
alarm | [<IPDU#>|<IPDU_ID>] | <threshold>
```

In the case of a PM42 IPDU:

```
alarm | <IPDU#> | <threshold> | <phase_letter>
```


Arguments

<IPDU#>	IPDU number in a daisy chain
<IPDU_ID>	Identification string previously set by the id command
<threshold>	The current threshold is the maximum allowed current on the power strip
<phase_letter>	Specifies the threshold of a specific phase on the PM42 IPDU. When the phase letter is not specified on the PM42 IPDU, the threshold will be set to the same value for all three phases.
no argument	Displays alarm status of all PM IPDUs in the daisy chain

Examples

To set the threshold on PM IPDU number one to 5.6A, enter:

```
pm>alarm 1 5.6
```

To set the threshold on PM IPDU number two phase Y to 5.6A, enter:

```
pm>alarm 2 5.6 Y
```

To read the threshold, enter:

```
pm>alarm
```

assign

The assign command assigns management of an outlet to a given user. This command is available to the admin user only.

Syntax

```
assign <outlet_number> <user>
```

Arguments

<outlet_number>	Outlet number, such as “5”, outlet name such as “sunfire”, or group of outlets such as “1, 3-5”
<user>	Desired username

Examples

To assign outlet 4, 6, 7 and 8 to user *tess*, enter:

```
pm>assign 4, 6-8 tess
```

buzzer

The buzzer command displays or changes the buzzer notification status. When set to “on”, a buzzer sounds when the current exceeds the threshold. This command is available to the admin user only.

Syntax

```
buzzer <on|off|status>
```

Arguments

on	Enables buzzer
off	Disables buzzer
status	Displays buzzer status

Examples

To get the current status of the buzzer notification, enter:

```
pm>buzzer status
```

To turn buzzer notification on or off, enter:

```
pm>buzzer on  
pm>buzzer off
```

current

The current command displays the total current drawn by PM IPDUs and the maximum current the unit has drawn (current peak). It may also be used to clear the saved peak current value.

Syntax

```
current [<IPDU#>|<IPDU_ID>]|reset
```

For PM42 IPDU:

```
current [<IPDU#>|<IPDU_ID> [<phase_letter>]]|reset
```

Arguments

<code><IPDU#></code>	IPDU number in a daisy chain
<code><IPDU_ID></code>	Identification string previously set by the <code>id</code> command
<code>reset</code>	Clears the saved peak current value
<code><phase_letter></code>	Either phase X, Y or Z for the PM42 IPDU

Examples

To get the current status for all units, enter:

```
pm>current
```

To get the current status for a specific unit, enter:

```
pm>current 2
```

To reset maximum current drawn, enter:

```
pm>current reset
```

currentprotection

The `currentprotection` command turns the over current protection feature on or off. The overcurrent protection does not allow an outlet to be turned on if the current drawn by the unit is greater than the current threshold configured with the `command alarm`. This command may also be used to display the current protection status and is available to the admin user only.

Syntax

```
currentprotection <on|off|status>
```

Arguments

<code>on</code>	Enables over current protection
<code>off</code>	Disables over current protection
<code>status</code>	Displays the current protection status

Examples

To display current protection status for all units, enter:

```
pm>currentprotection status
```

To enable current protection status for all units, enter:

```
pm>currentprotection ON
```

To disable current protection status for all units, enter:

```
pm>currentprotection off
```

NOTE: Current protection commands affect all IPDUs in the daisy chain and all phases of the PM42 IPDU.

currseg

The currseg command lets you view the current for the lower or upper segment of outlets. This command is only useful for IPDUs with dual current sensors. The lower segment (segment A) would be outlets 1-5 on a PM10 series IPDU, and the upper segment (segment B) would be outlets 6-10 on a PM10 series IPDU.

Syntax

```
currseg A|B [reset]
```

Arguments

A B	Segment A or segment B
reset	Clear the max recorded current for A and B

Example

To view the current load of segment A, enter:

```
pm>currseg A
```

To reset the maximum recorded current for A and B, enter:

```
pm>currseg reset
```

cycle

The cycle command power cycles an outlet or group of outlets. You may use the outlet number or the outlet name (see command name for details).

Syntax

```
cycle all|<outlet_string>
```

Arguments

<code>all</code>	Cycles all outlets in the PM IPDU or PM IPDU daisy chain
<code><outlet_string></code>	Outlet number, such as “5”, outlet name such as “sunfire”, or group of outlets such as “1, 3-5”

Examples

To cycle outlet 3, enter:

```
pm>cycle 3
```

To cycle outlets 2, 3, 5, 6 and 7, enter:

```
pm>cycle 2, 3, 5-7
```

dbsync

The `dbsync` command synchronizes the user database for all PM IPDUs in the chain. This command is available to the admin user only.

Syntax

```
dbsync
```

Arguments

none

Examples

To synchronize the user database for all PM IPDUs in the chain, enter:

```
pm>dbsync
```

deluser

The `deluser` command deletes one username from the internal database. This command is available to the admin user only.

Syntax

```
deluser <user>
```

Arguments

`<user>` Desired username

Examples

To delete the user “rog”, enter:

```
pm>deluser rog
```

display

The display command allows logical inversion of the 2-digit, 7-segment display. The purpose of this command is to allow a PM IPDU to be mounted upside-down. This command is available to the admin user only.

NOTE: The decimal point will be at the top of the display when the PM IPDU is mounted upside down.

On the PM42 IPDU, this command either allows you to manually step through the current level views of each bank of outlets, or to set an interval for the current level views to automatically be displayed.

NOTE: The display on the PM42 IPDU may be physically rotated.

Syntax

For single phase PM IPDUs:

```
display [<IPDU#>|<IPDU_ID> [0|180]]
```

For the PM42 IPDU:

```
display [<IPDU#>|<IPDU_ID> [Imanual|[Iauto <cycle_time>]]|[Vmanual|[Vauto <cycle_time>]]]
```

-or-

```
display
```

Arguments

no argument	Show display status of all PM IPDUs in the daisy chain
<IPDU#>	Number of the PM IPDU in the chain
<IPDU_ID>	Identification string previously set by the id command
0	Normal mode (default)
180	Inverted display

PM42 IPDU commands:

<code>Imanual</code>	Push button toggles phase X, Y, Z and then the vector sum of the three phases
<code>Iauto <cycle_time></code>	Show current every <cycle_time> seconds of phase X, Y, Z and then the vector sum of the three phases

Examples

To set the display of IPDU #2 to inverted mode, enter:

```
pm>display 2 180
```

To set the display of IPDU #1 to normal mode, enter:

```
pm>display 1 0
```

To set the display of IPDU #3 (PM42) to automatically show the current of each phase every two seconds, enter:

```
pm>display 3 Iauto 2
```

To view the display status, enter:

```
pm>display
```

exit

The exit command exits the session.

Syntax

```
exit
```

Arguments

```
none
```

Examples

To exit the current session, enter:

```
pm>exit
```

factory_defaults

The `factory_defaults` command resets the unit to its factory configuration. When used with a daisy chain, and no argument is given, this command resets all units in the chain. This command is available to the admin user only.

Syntax

```
factory_defaults [ <IPDU#> | <IPDU_ID> ]
```

Arguments

no argument	Resets all PM IPDUs in the daisy chain to factory default
<IPDU#>	Number of the PM IPDU in the chain
<IPDU_ID>	Identification string previously set by the id command

Examples

To reset the factory defaults, enter:

```
pm>factory_defaults 1
```

help

The `help` command displays the system help message for all commands or for a single command when specified.

NOTE: When the admin user is logged in, the `help` command displays all commands. When a regular user is logged in, the `help` command displays only the regular user commands.

Syntax

```
<command> help
```

Arguments

```
<command> Any available command
```

Examples

To view the system help message for a specific command, enter the command followed by **help**.

```
pm>syslog help
```

To view the system help message for all commands, enter:

```
pm>help
```


humidity

The humidity command displays the PM IPDU's surrounding humidity and the maximum humidity the IPDU has registered (humidity peak). It may also be used to clear the saved peak humidity value.

Syntax

```
humidity [<IPDU#>|<IPDU_ID>] |reset
```

Arguments

<IPDU#>	IPDU number in a daisy chain
<IPDU_ID>	Identification string previously set by the id command
reset	Resets the maximum humidity registered

Examples

To get the humidity for all units in a daisy chain, enter:

```
pm>humidity
```

To get the humidity for specific unit, provide the unit number as an argument, enter:

```
pm>humidity 2
```

To reset the maximum humidity registered, enter:

```
pm>humidity reset
```

hwocp

The hwocp command checks the status of the hardware overcurrent protection. When overcurrent protection is on, the power is shut off. When the overcurrent protection is off or reset, the power is on and the PM IPDU is running in normal mode. If no string identifying the IPDU is given, all PM IPDUs in the daisy chain are affected by this command. This command is available to the admin user only.

Syntax

```
hwocp [<IPDU#>|<IPDU_ID> [reset]]
```

Arguments

<IPDU#>	IPDU number in a daisy chain
<IPDU_ID>	Identification string previously set by the id command
reset	Turns overcurrent protection off (normal operation)

Examples

To check the hardware overcurrent status of IPDU #1, enter:

```
pm>hwocp 1
```

To reset the hardware overcurrent protection, enter:

```
pm>hwocp 1 reset
```

id

The id command sets or displays the ID of a PM IPDU. A maximum of 16 characters (not case sensitive) is allowed. Spaces, numbers and special characters are allowed. This command is available to the administrator user only.

This command works in a daisy chain.

Syntax

```
id [<IPDU#>] [<IPDU_ID>]
```

-or-

```
id [<IPDU_ID>] [<IPDU_ID>]
```

-or-

```
id
```

Arguments

<IPDU#>	IPDU number in a daisy chain
<IPDU_ID>	Identification string previously set by the id command
no argument	Displays the IDs of all PM IPDUs in the daisy chain

If <IPDU_ID> follows <IPDU#>, or if the <IPDU_ID> parameter is typed twice, the latest entry of the <IPDU_ID> parameter updates the ID string.

Examples

To set the ID of PM IPDU 1 R&D, enter:

```
pm>id 1 R&D
```

To display the ID of PM IPDU 2, enter:

```
pm>id 2
```

To rename an ID to “sammy,” using an existing ID “QA,” enter:

```
pm>id QA sammy
```

To display the IDs of all PM IPDUs in the daisy chain, enter:

```
pm>id
```

interval

The interval command configures the time interval (in seconds) to turn on power for each outlet in the system. This command is available to the admin user only.

Syntax

```
interval <outlet_number> <duration>
```

Arguments

<duration>	Sets the interval to turn on power to outlets. Valid intervals are from 0 to 100. Default value is 0.5
------------	--

NOTE: When this value is set to 0.0, there is still an interval of approximately 0.1 seconds between outlets to receive power.

<outlet_number>	Outlet number, such as “5”, outlet name such as “sunfire”, or group of outlets such as “1, 3-5”
-----------------	---

Examples

To display the interval of outlet 1, enter:

```
pm>interval 1
```

To set the interval of outlets 2, 4, 5, and 6 to a value of 2.4, enter:

```
pm>interval 2,4-6 2.4
```

NOTE: The PM42 IPDU will not accept entries with decimal places.

list

For the admin user, the list command lists all users that have been created and the outlets assigned to each of those users. For regular users, the list command lists only the outlets assigned to the user currently logged in.

Syntax

```
list
```

Arguments

none

Examples

As admin, to list usernames and associated outlets in the internal database, enter:

```
pm>list
```

lock

The lock command locks an outlet or group of outlets in their current state. The response to this command is a list of status lines, one per power port. This command works on all PM IPDUs in a daisy chain.

Syntax

```
lock all|<outlet_string>
```

Arguments

<outlet_string> Outlet number, such as “5”, outlet name such as “sunfire”, or group of outlets such as “1, 3-5”

Examples

To lock outlets 1, 2 and 6, enter:

```
pm>lock 1,2,6
```

name

The name command names an outlet. A maximum of 16 alphabetic and numeric characters (not case sensitive) is allowed with these exceptions:

- The hyphen (-), percent (%), and comma (,) characters are not allowed.
- Numeric characters are not allowed as the first character of a name.

This command is available to the administrator user only.

Syntax

```
name <outlet_number> <name>
```

Arguments

<outlet number> Outlet number, such as “5”

<name> Desired outlet name

Examples

To name outlet 4 as nowhere, enter:

```
pm>name 4 nowhere
```

off

The off command turns an outlet or group of outlets off. This command works on outlets in a PM IPDU daisy chain.

Syntax

```
off all|<outlet_string>
```

Arguments

all Turns off all outlets in the PM IPDU or PM IPDU daisy chain

<outlet_string> Outlet number, such as “5”, outlet name such as “sunfire”, or group of outlets such as “1, 3-5”



CAUTION: The “all” argument will turn off all outlets in a PM IPDU or PM IPDU daisy chain.

Examples

To turn all outlets off, enter:

```
pm>off all
```

To turn off outlets 2 through 7 (or all outlets except 1 and 10 in a single PM10 IPDU), enter the following.

```
pm>off 2-9
```

on

The on command turns an outlet or a group of outlets on. If more than one outlet is selected there will be an interval between outlets being powered on. The interval is defined by the interval command. This command works on outlets in a PM IPDU daisy chain.

Syntax

```
on all|<outlet_string>
```

Arguments

all	Turns off all outlets in the PM IPDU or PM IPDU daisy chain
<outlet_string>	Outlet number, such as “5”, outlet name such as “sunfire”, or group of outlets such as “1, 3-5”

Examples

To turn on outlets 1, 3, 4 and 5, type:

```
pm>on 1, 3-5
```

passwd

The passwd command sets a password. Regular users may change or set their own password only. The Administrator may change his or her own password or any regular user’s password.

Syntax

```
passwd <user_name>
```

Arguments

<user_name>	Name of the user whose password is being changed
no argument	To change the current user’s password

Examples

To change the password for user alpha, when logged in as admin, enter:

```
pm>passwd alpha
```

Passwords may be set to null, which indicates that no password is needed.

reboot

The reboot command reboots a PM IPDU. You may reboot a specific unit by issuing the reboot command followed by the unit’s logical number or the unit’s ID. Issuing the reboot command

without a parameter reboots the first unit in a chain, not all the units in a chain. This command is available to the admin user only.

Syntax

```
reboot [ <IPDU#> | <IPDU_ID> ]
```

Arguments

<IPDU#>	IPDU number in a daisy chain
<IPDU_ID>	Identification string previously set by the id command

Examples

To reboot the first unit of the chain, or to reboot the unit in standalone mode, enter:

```
pm>reboot
```

To reboot the a specific IPDU in the chain (IPDU 2 shown), enter:

```
pm>reboot 2
```

restore

The restore command restores the configuration currently saved in Flash. This command is available to the admin user only.

Syntax

```
restore
```

Arguments

N/A

Examples

To restore the configuration currently saved in Flash, enter:

```
pm>restore
```

save

The save command saves the current configuration in the Flash device built in to all PM IPDU units. This command saves the username/password database and the specific information pertaining to each outlet such as outlet name, outlet assignments and outlet state. This command is available to the admin user only.

If you save your configuration to Flash it will be restored after the next reboot. If you do not save your configuration to Flash, you will lose it all after the next reboot.

Syntax

```
save
```

Arguments

```
none
```

Examples

To save the configuration to Flash, enter:

```
pm>save
```

status

The status command displays the status of selected outlets.

Syntax

```
status all|<outlet_string>
```

Arguments

<outlet_string> Outlet number, such as “5”, outlet name such as “sunfire”, or group of outlets such as “1, 3-5”

all Displays the status of all outlets in a PM IPDU or PM IPDU daisy chain

Examples

To display the status of outlet 1, enter:

```
pm>status 1
```

To display the status of all outlets, enter:

```
pm>status all
```

syslog

The syslog command displays or changes the syslog notification status. This command is available to the admin user only.

Syntax

```
syslog on|off|status
```


Arguments

<code>on</code>	Enables message to be displayed in the console when there is an over current situation
<code>off</code>	Disables the message notification
<code>status</code>	Displays the current syslog status of all PM IPDUs on the daisy chain
<code>no argument</code>	Same as status

Examples

To get the current status of the syslog notification, enter:

```
pm>syslog
```

To turn on and off the syslog notification, enter as necessary:

```
pm>syslog on
pm>syslog off
```

temperature

The temperature command displays the PM IPDU's surrounding temperature and the maximum temperature the unit has registered (temperature peak). It may also be used to clear the saved peak temperature value.

Syntax

```
temperature [<IPDU#>|<IPDU_ID>] reset
```

Arguments

<code><IPDU#></code>	IPDU number in a daisy chain
<code><IPDU_ID></code>	Identification string previously set by the id command
<code>reset</code>	Resets the maximum temperature registered

Examples

To get the temperature for all units in a daisy chain, enter:

```
pm>temperature
```

To get the temperature for specific unit, provide the unit number as an argument, enter the following.

```
pm>temperature 2
```

To reset the maximum temperature registered and use reset as an argument, enter:

```
pm>temperature reset
```

unassign

The unassign command removes the assignment of an outlet or group of outlets from a given user. This command is available to the admin user only.

Syntax

```
unassign <outlet_string> <user>
```

Arguments

<outlet_string> Outlet number, such as “5”, outlet name such as “sunfire”, or group of outlets such as “1, 3-5”

<user> Desired username

Examples

To unassign outlet 2 and 4 from user *diderot*, enter:

```
pm>unassign 2,4 diderot
```

unlock

The unlock command unlocks an outlet or group of outlets in the current state. The response to this command is a list of status lines, one per power port.

Syntax

```
unlock all|<outlet_string>
```

Arguments

<code><outlet_string></code>	Outlet number, such as “5”, outlet name such as “sunfire”, or group of outlets such as “1, 3-5”
<code>all</code>	Unlocks all outlets in the PM IPDU or PM IPDU daisy chain

Examples

To unlock outlets 2, 3, 4 and 8, enter:

```
pm>unlock 2-4,8
```

upgrade

The upgrade command is available only to the administrator. You may either upgrade or boot the firmware.

NOTE: For details on upgrading using the upgrade command or using the reboot command, see *Upgrading the PM IPDU firmware* on page 11.

Syntax

```
upgrade <IPDU#> | <IPDU_ID>
```

Arguments

<code><IPDU#></code>	IPDU number in a daisy chain
<code><IPDU_ID></code>	Identification string previously set by the id command

If you wish to upgrade more than one IPDU, it is recommended that you upgrade the most remote IPDU first.

Examples

To upgrade IPDU 1, type:

```
pm>upgrade 1
```

ver

The ver command shows the current software version and hardware model information of the selected PM IPDU.

Syntax

```
ver [ <IPDU#> | <IPDU_ID> ]
```

-or-

ver

Arguments

<IPDU#>	IPDU number in a daisy chain
<IPDU_ID>	Identification string previously set by the id command
no argument	Displays version information for the PM IPDU and for all PM IPDUs in a daisy chain

Examples

To view the current software version of all IPDUs in a daisy chain, enter:

```
pm>ver
```

NOTE: If an IPDU has an id assigned to it, the ver command displays the word "id" followed by the name of the IPDU and the model number of the PM IPDU.

To get this information for a specific unit, provide the unit number as an argument.

```
pm>ver 2
```

voltage

The voltage command shows the true RMS voltage between two phases.

Syntax

```
voltage [<IPDU#> | <IPDU_ID> [AB|AC|BC]]
```

Arguments

<IPDU#>	IPDU number in a daisy chain
<IPDU_ID>	Identification string previously set by the id command
XY YZ XZ	Phases to select
no argument	Displays the RMS voltage on all units if voltage sensors are available

Examples

To view the RMS voltage on a PM42 IPDU across phases X and Y, enter:

```
pm>voltage 1 XY
```

whoami

The whoami command shows the username of the user currently logged in.

Syntax

whoami

Arguments

none

Examples

To view the current username, enter:

```
pm>whoami
```


APPENDICES

Appendix A: Specifications

Table A.1: PM IPDU Specifications

Unit	Input Voltage	Max Output Current	Max Output Each Outlet	Operating Temp	Weight	Width	Depth	Height
PM10-15A	100-125 VAC	15A (12A)	15A (12A)	10-50 °C	3.64 kg	17 in	8 in	1.75 in
PM10-20A, PM10-L20A	100-125 VAC	20A (16A)	15A (12A)	10-50 °C	3.64 kg	17 in	8 in	1.75 in
PM10-L30A	100-125 VAC	30A (24A)	15A (12A)	10-50 °C	3.64 kg	17 in	8 in	1.75 in
PM10i-10A	100-240 VAC	10A	10A	10-50 °C	3.64 kg	17 in	8 in	1.75 in
PM10i-15A	100-240 VAC	15A (12A)	10A (8A)	10-50 °C	3.64 kg	17 in	8 in	1.75 in
PM10i-16A	100-240 VAC	16A	10A	10-50 °C	3.64 kg	17 in	8 in	1.75 in
PM10i-20A	100-240 VAC	20A (16A)	10A (8A)	10-50 °C	3.64 kg	17 in	8 in	1.75 in
PM10i-32A, PM10i-32Au	100-240 VAC	32A	10A	0-50 °C	5.45 kg	17 in	11.5 in	1.75 in
PM10i-L30A	100-240 VAC	30A (24A)	10A (8A)	0-50 °C	5.45 kg	17 in	11.5 in	1.75 in
PM20-20A, PM20-L20A	100-125 VAC	20A (16A)	15A (12A)	10-50 °C	7.73 kg	1.8 in	2.2 in	66 in
PM20-L30A	100-125 VAC	30A (24A)	15A (12A)	10-50 °C	7.73 kg	1.8 in	2.2 in	66 in
PM20i-16A	100-240 VAC	16A	10A	0-50 °C	7.73 kg	2 in	2.8 in	66 in
PM20i-20A, PM20i-L20A	100-240 VAC	20A (16A)	10A (8A)	0-50 °C	7.73 kg	2 in	2.8 in	66 in
PM20i-L30A	100-240 VAC	30A (24A)	10A (8A)	0-50 °C	7.73 kg	2 in	2.8 in	66 in
PM20i-32A	100-240 VAC	32A	10A	10-50 °C	7.73 kg	2 in	2.8 in	66 in

Table A.2: PM42 IPDU Specifications

Characteristics	
Electrical	
Input Voltage	Three phases, phase to phase 208 VAC
Max Input Current	24A
Max Output Current Total	16A on any single bank (XY, YZ or XZ) -or- 13.8A evenly distributed on each bank (XY, YZ or XZ) NOTE: Maximum allowed current in any bank is limited to 16A although the maximum of 24A input current per phase must not be exceeded. If equal loads are provided to all banks then, in order to have this maximum input current of 24A, the maximum allowed current per bank will have to be decreased to 13.8A.
Max Output Current Each Outlet	42 - IEC320-C13: 12A at 208 VAC (42 places)
Environmental	
Operating Temperature	0-50°C
Mechanical	
Weight	10.89 kg
Physical Dimensions (W x D x H)	2.2 x 2.5 x 72.0 in

Interface Pinouts

Table A.3: Pinouts for IN and OUT RS-232 Serial Ports

Signal	Name/Function	I/O	IN Pin	OUT Pin
RTS	Request to Send	(O)	5	1
DTR	Data Terminal Ready	(O)	7	2
TxD	Transmit Data	(O)	6	3
Gnd	Ground	N/A	4	4
CTS	Clear to Send	(I)	1	5
RxD	Receive Data	(I)	3	6
DCD	Data Carrier Detect	(I)	2	7

Appendix B: Safety Instructions

Follow the safety precautions in this document when installing and operating the PM IPDU.

Safety Instructions

Read all the following safety guidelines to protect yourself and your Cyclades PM.



DANGER! All outlets of the PM IPDU output high voltage. Necessary precautions should be taken.

DANGER! To help prevent electric shock, plug the PM IPDU into a properly grounded power source. The power cord is equipped with a three-prong plug to help ensure proper grounding. Do not use adaptor plugs or remove the grounding prong from the cable. Do not use extension cords with the PM IPDU.

DANGER! Do not push any objects through the openings of the PM IPDU. Doing so may cause fire or electric shock by shorting out interior components.

DANGER! There is a possibility of severe electrical shock from either the live or neutral side of any of the power outlets or their wiring, even if one of the circuit breakers is disabled.



IMPORTANT: PM IPDU is intended for enterprise and indoor use only.

IMPORTANT: To help protect the PM IPDU from electrical power fluctuations, use a surge suppressor, line conditioner, or uninterruptible power supply.

IMPORTANT: Be sure that nothing rests on the cables of the PM IPDU and that they are not located where they may be stepped on or tripped over.

IMPORTANT: Do not spill food or liquids on the PM IPDU. If it gets wet, disconnect the power immediately and contact Avocent.

IMPORTANT: Keep your PM IPDU away from heat sources.

Sicherheitsanweisungen

Bitte lesen und befolgen Sie diese Sicherheitsrichtlinien um sich und Ihren PM IPDU vor Schäden zu bewahren.

GEFAHR! Alle Ausgänge des PM IPDU führen Hochspannung. Bitte die erforderlichen Vorsichtsmaßnahmen einhalten.

GEFAHR! Um elektrische Stromschläge zu vermeiden, verbinden Sie bitte das Eingangskabel des PM IPDU mit einer ausreichend geerdeten Stromversorgung. Das Netzkabel ist mit drei Leitungen versehen um korrekte Erdung zu ermöglichen. Bitte benutzen Sie keine Adapterstecker und entfernen Sie nicht die Erdungsleitung. Bitte verwenden Sie keine Verlängerungskabel.

GEFAHR! Bitte führen Sie keine Gegenstände in die Öffnungen des PM IPDU ein. Dies könnte zu Bränden oder elektrischen Schock durch Kurzschluss der internen Komponenten führen.

GEFAHR! Auch nach Öffnung einer der beiden Sicherungen kann das Gerät noch unter Spannung über die Phasen- oder Nullleiterzufuhr stehen.

Wichtig: Der PM IPDU ist für den Unternehmenseinsatz und den Gebrauch innerhalb von abgeschlossenen Gebäuden vorgesehen.

Wichtig: Um den PM IPDU vor elektrischen Spannungsschwankungen zu schützen empfehlen wir den Einsatz von Überspannungsreglern, Spannungsglätttern oder USVs.

Wichtig: Bitte stellen Sie sicher, daß keine Gegenstände auf den Kabeln des PM IPDU liegen und die Kabel so geführt sind, daß niemand darauf treten oder darüber stolpern kann.

Wichtig: Bitte schütten Sie keine Nahrungsmittel oder Flüssigkeiten auf den PM IPDU. Falls das Gerät naß werden sollte trennen Sie bitte sofort die Netzverbindung und kontaktieren Avocent.

Wichtig: Bitte halten Sie Ihren PM IPDU vor Hitzequellen entfernt.

Istruzioni di Sicurezza

Vi preghiamo di attenervi alle seguenti direttive per la vostra sicurezza e un sicuro utilizzo dell'PM IPDU.

PERICOLO! Tutte le prese dell'PM IPDU sono sotto alta tensione. Occorre prendere precauzioni.

PERICOLO! Per evitare di prendere la scossa, inserire la spina dell'PM IPDU nell'appropriata presa a terra. L'alimentatore è equipaggiato con una spina a tre poli per assicurare un corretto collegamento. Non utilizzare adattatori e non rimuovere la spina a tre poli dal cavo. Non utilizzare prolunghie.

PERICOLO! Non inserire oggetti nelle aperture dell'PM IPDU. Farlo potrebbe causare un incendio o danneggiare i componenti interni.

PERICOLO! C'è la possibilità che la fase o la terra rimanga sotto tensione anche se uno degli interruttori è disattivato.

Importante: Le PM IPDU è certificato per uso aziendale e solamente in luogo chiuso.

Importante: Per proteggere le PM IPDU da fluttuazioni di corrente elettrica, utilizzare un limitatore di sovracorrente, un condizionatore di linea, o un gruppo di alimentazione continua, UPS.

Importante: Assicurarsi che niente giaccia sui cavi dell'PM IPDU e che questi non causino intralcio al passaggio.

Importante: Non versare cibo o liquidi sull'PM IPDU. Nel caso l'apparecchiatura si bagnasse, togliere immediatamente l'alimentazione e contattare Avocent.

Importante: Tenere lontano da fonti di calore.

Instruções de Segurança

Leia e siga as diretrizes de segurança abaixo para sua proteção e de seu PM IPDU.

PERIGO! Alta voltagem está presente em todas as tomadas do PM IPDU. As devidas precauções devem ser tomadas.

PERIGO! Para evitar choques elétricos, conecte o PM IPDU a uma tomada devidamente aterrada. O cabo de força possui uma tomada com três pinos para ajudar a garantir que o devido aterramento seja feito. Não use adaptadores nem remova o pino de aterramento da tomada. Não use extensões para conexão elétrica com o PM IPDU.

PERIGO! Não introduza objetos pelas aberturas existentes no PM IPDU. O curto-circuito de componentes internos pode fazer com que o produto pegue fogo e causar choques elétricos.

PERIGO! É possível que haja tensão presente nos circuitos de fase ou neutro mesmo que um dos dispositivos de proteção contra sobrecorrente esteja atuando.

Importante: O PM IPDU é destinado exclusivamente ao uso comercial em ambientes fechados.

Importante: Para ajudar a proteger o PM IPDU contra conseqüências nocivas causadas por flutuações na rede elétrica, use um estabilizador, filtro ou baterias que evitem eventual interrupção no fornecimento de energia.

Importante: Garanta que não haja nenhum objeto sobre os cabos do PM IPDU e que eles não estejam em locais de trânsito de pessoas para que não sejam pisados e para que não causem quedas ou acidentes.

Importante: Não derrame alimentos ou líquidos sobre o PM IPDU. Se o produto for molhado, desconecte-o da tomada imediatamente e entre em contato com a Avocent.

Importante: Mantenha o PM IPDU longe de fontes de calor.

Instrucciones de seguridad

Lea y siga estas pautas de seguridad para protegerse a usted y a su PM IPDU.

¡PELIGRO! Todos los enchufes de salida PM IPDU tienen alto voltaje. Se deben tomar las precauciones necesarias.

¡PELIGRO! Para ayudar a prevenir descargas eléctricas, conecte el PM IPDU en una fuente de energía correctamente puesta a tierra. El cable eléctrico está equipado de un enchufe del tres conectores para ayudar a asegurar la puesta a tierra apropiadamente. No utilice adaptadores de enchufe, ni quite el conector de tierra. No utilice extensores con el PM IPDU.

¡PELIGRO! No empuje ningún objeto en las aberturas del PM IPDU. El hacerlo puede causar fuego o descargas eléctricas poniendo en cortocircuito los componentes interiores.

¡PELIGRO! Existe la posibilidad de tensión en cualquier conector del PM IPDU, incluso si uno de los interruptores está desactivado.

Importante: El PM IPDU se piensa para la empresa y el uso de interior solamente.

Importante: Para ayudar a proteger el PM IPDU contra fluctuaciones de la corriente eléctrica, utilice un supresor de fluctuaciones, acondicionador de línea, o fuente de alimentación ininterrumpida.

Importante: Asegurese que nada se apoya sobre los cables del PM IPDU y que no están localizados donde puedan ser pisados cuando estén encendidos.

Importante: No derrame alimentos o líquidos en el PM IPDU. Si se hubiera mojado, desconecte la energía inmediatamente y entre en contacto con Avocent.

Importante: Mantenga su PM IPDU lejos de fuentes de calor.

Instructions de sécurité

Lisez et suivez les instructions de sécurité pour votre protection et celle de le PM IPDU.

DANGER! Toutes les prises de l'PM produisent une tension électrique élevée. Prenez les précautions d'usage.

DANGER! Pour aider à éviter tout choc électrique, branchez l'PM IPDU à une source électrique correctement liée à la terre. Le cordon électrique est équipé d'une prise à 3 broches pour aider à assurer une connexion correcte avec la terre. N'utilisez pas d'adaptateurs ou n'enlevez pas la broche de la terre du cable. N'utilisez pas de rallonge électrique avec l'PM IPDU.

DANGER! Ne pas faire passer aucun objets à travers les ouvertures de l'PM IPDU. Le faire peut causer un feu ou des chocs électriques en court-circuitant des composants interne.

DANGER! Il y a une possibilité de présence de courant pour la Phase et le Neutre même si l'un des relais électrique est désactivé.

Important: L'PM IPDU est prévu pour les entreprises dans un usage à l'intérieur seulement.

Important: Pour aider à protéger l'PM IPDU des fluctuations d'alimentation électrique, utilisez un filtre de surtension, un conditionneur de ligne ou une source d'alimentation qui ne peut pas être interrompue.

Important: Soyez sûr que rien ne repose sur les cables de l'PM IPDU, qu'ils ne sont pas sur un lieu de passage, qu'ils ne peuvent pas être piétiné et que l'on ne peut pas trébucher dessus.

Important: Ne reversez pas de nourriture ou de liquides sur le PM IPDU. Si elle est humide, déconnectez l'alimentation électrique immédiatement et contactez Avocent.

Important: Gardez l'PM IPDU à distance des sources de chaleur.

Appendix C: Circuit Breakers

The PM IPDU circuit breakers are designed to turn the power off to some or all of the PM IPDU outlets in case the rated current is exceeded. The circuit breaker mechanism for each PM IPDU model is explained in the following sections.

PM IPDU Units with One Circuit Breaker

Only one circuit breaker is used for the following units:

- PM10-15A IPDU
- PM10-20A IPDU
- PM10-L20 IPDU
- PM20-20A IPDU
- PM20-L20 IPDU
- PM20i-16A IPDU
- PM20i-20A IPDU

In the event of a current overload in any of these units, the entire unit shuts down, causing all outlets to disconnect.

NOTE: The PM42 IPDU has two UL listed fuses on each phase bank that are not replaceable. There is also a sensor circuit that acts as a backup by monitoring total current and resetting all receptacle relays in the event of a current overage.

PM10i IPDU

Some versions of the PM10i IPDU (10, 15, 16 and 20 amps) have two circuit breakers each. Both circuit breakers are designed to protect different phases of the same circuit inside the unit. If either one of the two circuit breakers trips, the entire unit will shut down.

PM10-L30A IPDU

The PM10-L30A IPDU has two 15-amp circuit breakers. The first circuit breaker controls outlets 1 through 5 and the power supply to the controller; the second circuit breaker controls outlets 6 through 10. If the total current flow to outlets 6 through 10 exceeds 15 amps due to equipment connected to these outlets, then the second circuit breaker will trip causing outlets 6 through 10 to shut down. This does not affect outlets 1 through 5, which are controlled by the first circuit breaker.

If, however, current overload causes the first circuit breaker to trip, then the entire power unit shuts down because the power supply is also tied to the first circuit breaker.

Refer to Table C.5 to determine the time it takes for the circuit breaker to trip based on the amount of current overload.

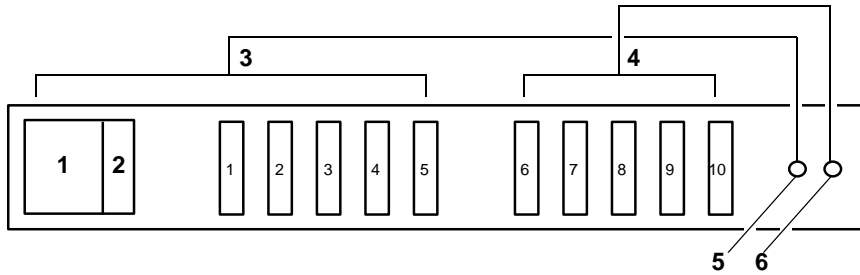


Figure C.1: PM10-L30A IPDU Circuit Breakers

Table C.1: PM10-L30A IPDU Circuit Breakers Descriptions

Number	Description	Number	Description
1	Controller	4	15A to Outlets 6 - 10
2	Power Supply	5	First Circuit Breaker
3	15A to Outlets 1 - 5 and to the Controller and Power Supply	6	Second Circuit Breaker

PM10i-L30A IPDU

The PM10i-L30A IPDU has two 15-amp circuit breakers. The first circuit breaker controls outlets 6 through 10; the second controls outlets 1 through 5. In the event that the total current flow to outlets 6 through 10 exceeds 15 amps due to equipment connected to these outlets, the first circuit breaker will trip causing outlets 6 through 10 to shutdown. This does not affect outlets 1 through 5, which are controlled by the second circuit breaker.

The PM IPDU controller is installed so that tripping either or both breakers will not render it inoperative.

When either circuit breaker trips, only the power outlets of that segment will be affected, and half of the outlets remain operative.

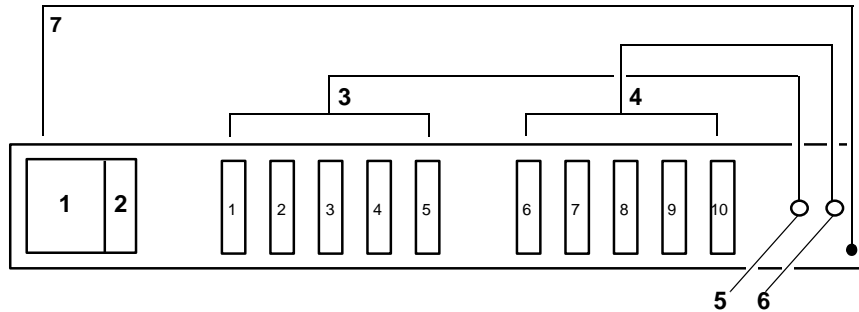


Figure C.2: PM10i-L30A IPDU Circuit Breakers

Table C.2: PM10i-L30A IPDU Circuit Breakers Descriptions

Number	Description	Number	Description
1	Controller	5	First Circuit Breaker
2	Power Supply	6	Second Circuit Breaker
3	15A to Outlets 1 - 5	7	Independent Power to Controller
4	15A to Outlets 6 - 10		

PM10i-32A IPDU and PM10i-32Au IPDU

The PM10i-32A has two 16-amp circuit breakers. The first circuit breaker controls outlets 6 through 10; the second controls outlets 1 through 5. In the event that the total current flow to outlets 6 through 10 exceeds 16 amps due to equipment connected to these outlets, the first circuit breaker will trip causing outlets 6 through 10 to shutdown. This does not affect outlets 1 through 5, which are controlled by the second circuit breaker.

The PM IPDU controller is installed so that tripping either or both breakers will not render it inoperative.

When either circuit breaker trips, only the power outlets of that segment will be affected, and half of the outlets remain operative.

PM20-L30A IPDU

The PM20-L30A IPDU has two 15-amp circuit breakers. The first circuit breaker controls outlets 11 through 20; the second controls outlets 1 through 10 as well as the power supply to the logic board. In the event that the total current flow to outlets 11 through 20 exceeds 15 amps due to equipment connected to these outlets, then the first circuit breaker will trip causing outlets 11 through 20 to shutdown. This does not affect outlets 1 through 10 which are controlled by the second circuit breaker.

If, however, current overload causes the second circuit breaker to trip, then the entire power unit shuts down because the power supply is also tied to the second circuit breaker.

Refer to Table C.5 to determine the time it takes for the circuit breaker to trip based on the amount of current overload.

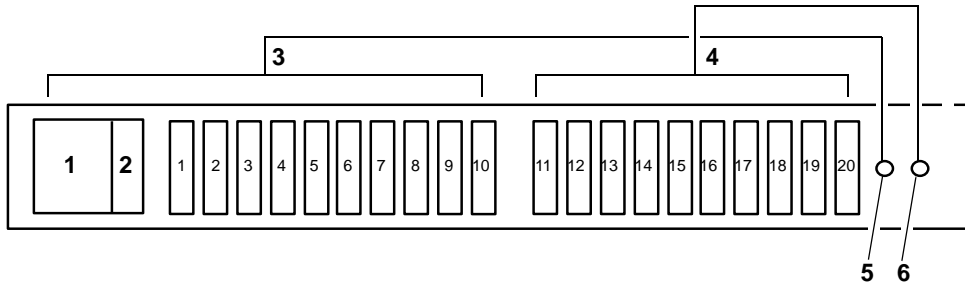


Figure C.3: PM20-L30A IPDU Circuit Breakers

Table C.3: PM10i-L30A IPDU Circuit Breakers Descriptions

Number	Description	Number	Description
1	Controller	4	15A to Outlets 11 - 20
2	Power Supply	5	First Circuit Breaker
3	15A to Outlets 1 - 10 and to the Controller and Power Supply	6	Second Circuit Breaker

PM20i-L30A IPDU

The PM20i-L30A IPDU has two 15-amp circuit breakers. The first circuit breaker controls outlets 11 through 20; the second controls outlets 1 through 10. In the event that the total current flow to outlets 11 through 20 exceeds 15 amps due to equipment connected to these outlets, then the first circuit breaker will trip causing outlets 11 through 20 to shutdown. This does not affect outlets 1 through 10 which are controlled by the second circuit breaker.

The PM IPDU controller is installed so that tripping either or both breakers will not render it inoperative.

When either circuit breaker trips, only the power outlets of that segment will be affected, and half of the outlets remain operative.

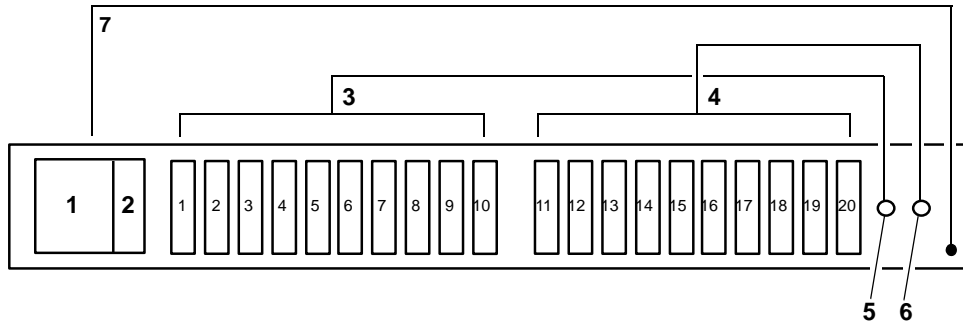


Figure C.4: PM20i-L30A IPDU, PM20i-32A IPDU and PM20i-32Au IPDU Circuit Breakers

Table C.4: PM10i-L30A IPDU Circuit Breakers Descriptions

Number	Description	Number	Description
1	Controller	5	First Circuit Breaker
2	Power Supply	6	Second Circuit Breaker
3	15A to Outlets 1 - 10	7	Independent Power to Controller
4	15A to Outlets 11 - 20		

PM20i-32A IPDU and PM20i-32Au IPDU

The PM20i-32A IPDU and the PM20i-32Au IPDU have two 16-amp circuit breakers. The first circuit breaker controls outlets 11 through 20; the second controls outlets 1 through 10. In the event that the total current flow to outlets 11 through 20 exceeds 16 amps due to equipment connected to these outlets, the first circuit breaker will trip causing outlets 11 through 20 to shutdown. This does not affect outlets 1 through 10 which are controlled by the second circuit breaker.

As the PM20i-32A IPDU and the PM20i-32Au IPDU have the controller powered from the line side of one of the circuit breakers, the whole unit will become inoperative only when both circuit breakers trip; however, the controller will remain functioning.

When either circuit breaker trips, only the power outlets of that segment will be affected, and half of the outlets remain operative.

Circuit breaker trip time

Depending on the model, the PM IPDU uses either one 10 amp, one 20 amp, two 15 amp, or two 16 amp circuit breakers. Table C.5 shows the circuit breaker trip time for all PM IPDU models except the PM42 IPDU.

Table C.5: Circuit Breaker Trip Time

Current Load	Trip Time
200%	5-30 seconds
300%	1.8-10 seconds
400%	0.9-5 seconds
500%	0.5-3.3 seconds
600%	0.38-2.3 seconds
800%	0.2-1.3 seconds
1000%	0.15-0.9 seconds

Table C.6: PM42 IPDU Shutdown Time

Current Load	Complete Shutdown Time
> 32A on any single phase	3.5 seconds



CAUTION: Do not pull a plug with a live electrical load from an outlet on the PM IPDU. This can cause damage to your equipment. The off command provides a means to safely turn off the power to the selected outlet before pulling the plug from the outlet.

Appendix D: Technical Support

Our Technical Support staff is ready to assist you with any installation or operating issues you encounter with your Avocent product. If an issue should develop, follow the steps below for the fastest possible service.

To resolve an issue:

1. Check the pertinent section of this manual to see if the issue can be resolved by following the procedures outlined.
2. Check our web site at www.avocent.com/support to search the knowledge base or use the online service request.
3. Call the Avocent Technical Support location nearest you.



Avocent®

The Power of Being There®

For Technical Support:

www.avocent.com/support

Avocent Corporation
4991 Corporate Drive
Huntsville, Alabama 35805-6201 USA
Tel: +1 256 430 4000
Fax: +1 256 430 4031

Avocent Asia Pacific
Singapore Branch Office
100 Tras Street, #15-01
Amara Corporate Tower
Singapore 079027
Tel: +656 227 3773
Fax: +656 223 9155

Avocent Canada
20 Mural Street, Unit 5
Richmond Hill, Ontario
L4B 1K3 Canada
Tel: +1 877 992 9239
Fax: +1 877 524 2985

Avocent International Ltd.
Avocent House, Shannon Free Zone
Shannon, County Clare, Ireland
Tel: +353 61 715 292
Fax: +353 61 471 871

Avocent Germany
Gottlieb-Daimler-Straße 2-4
D-33803 Steinhagen
Germany
Tel: +49 5204 9134 0
Fax: +49 5204 9134 99

590-667-501B