



48GS(N)-2SB

**48GS(N)018-060
STANDARD EFFICIENCY**

**48GX(N)024-060
HIGH-EFFICIENCY**

**SINGLE-PACKAGE GAS HEATING
ELECTRIC COOLING UNITS**

- PERFORMANCE DATA**
- CERTIFIED DIMENSION PRINT**
- CERTIFIED ROOF CURB
DIMENSION PRINT**



Copyright 2000 Carrier Corporation

Date:	Supersedes:	48GS(N)018-060/48GX(N)024-060 Single-Package Gas Heating/ Electric Cooling Units	48GS-2SB	Rev.:
JOB DATA:		LOCATION:		
BUYER:	BUYER P.O. #	CARRIER #		
UNIT NUMBER:		MODEL NUMBER:		
PERFORMANCE DATA CERTIFIED BY:			DATE:	

DESCRIPTION

48GS(N)/48GX(N) units are self-contained, gas heating/electric cooling units designed for easy installation and maintenance and dependable performance. All units have discharge openings for either horizontal or downflow configuration, and all have low sound levels. Units are intended for outdoor installation and may be located on a rooftop, or a ground-level concrete slab, or directly on the ground if local codes permit.



FEATURES

- Standard one year limited warranty for both 48GS and 48GX.
- 10 year warranty on the 48GX(N) compressor.
- 5 year warranty on the 48GS(N) compressor.
- 15 year warranty on the 48GX(N) gas-fired heat exchanger.
- 10 year warranty on the 48GS(N) gas-fired heat exchanger.
- Units certified and listed by UL and c-UL. Units are rated in accordance with ARI Standard 210.
- Low sound ratings.
- Units are pre-wired, pre-piped, and pre-charged for minimum installation expense.
- 12 SEER cooling efficiency.
- Lightweight.
- Compressor vibration isolation provides quieter operation.
- Energy saving, direct spark ignition.
- Easily converted for downflow operation with included horizontal duct covers.
- Cabinets are constructed of heavy-duty, phosphated, zinc coated pre-painted steel capable of withstanding 500 hours in salt spray.
- Easy-to-service cabinets with single-panel accessibility.
- Direct-drive multi-speed, permanent split capacitor (PSC) indoor motor is standard.
- Direct-drive, PSC outdoor fan motor.
- Integrated gas control board provides safe and efficient control of gas heating.
- Corrosion resistant gas heat exchangers.
- Coils constructed of aluminum fins bonded to copper tubes.
- Wire grille provides additional protection.
- “Enviro-tuff” composite rust-proof unit base pan.
- Sloped drain pan minimizes standing water in the unit.
- Refrigerant service connections make checking operating pressures easier.
- Copper & pre-coated fin coils are available from the factory by special order, for use in corrosive environments.
- Low NOx units available for use in California.
- Three-phase units available.

PERFORMANCE DATA

Unit Operating Weight _____ lb (unit); _____ lb (curb)

COOLING

Net Total Capacity _____ Btuh
 Net Sensible Capacity _____ Btuh
 Compressor Power Input _____ kW @ _____ °F
 Outdoor-Air Temperature _____ °F
 Indoor Entering-Air db _____ °F wb _____ °F
 Seasonal Energy Efficiency Ratio _____
 CFM _____ Ext. Static Pressure _____ in. wg
 Indoor Fan Motor _____ Hp _____ Rpm _____ Bhp

HEATING

Input _____ Btuh
 Output _____ Btuh
 AFUE _____ %
 Power Input to Unit _____ kW
 Integrated Capacity _____ Btuh
 Indoor Operating Temp _____ °F db
 Outdoor-Air Temp _____ °F (Winter Design)
 COP/HSPF _____ Hi _____ Lo

ELECTRICAL DATA

Unit Power Supply _____ Volts _____ Phase _____ Hz
Minimum Circuit Amps _____ Maximum Overcurrent Protection _____

FIELD INSTALLED ACCESSORIES

- | | |
|--|--|
| <input type="checkbox"/> Economizer | <input type="checkbox"/> Crankcase Heater |
| <input type="checkbox"/> Manual air Damper | <input type="checkbox"/> Time Guard® II Device |
| <input type="checkbox"/> Filter Rack | <input type="checkbox"/> Compressor Hard Start Kit |
| <input type="checkbox"/> Flat Roof Curb | <input type="checkbox"/> LP conversion Kit |
| <input type="checkbox"/> 8 in .Height | <input type="checkbox"/> 0°F Low Ambient Kit (Motormaster® II) |
| <input type="checkbox"/> 14 in. Height | <input type="checkbox"/> Square-to-Round Duct Transition Kit |
| <input type="checkbox"/> Thermostat | <input type="checkbox"/> High Altitude Kit |
| <input type="checkbox"/> Programmable | <input type="checkbox"/> Controls Upgrade Kit |
| <input type="checkbox"/> Non-Programmable | <input type="checkbox"/> Lifting Kit |

NOTES: _____

CERTIFIED DIMENSION PRINT

P O BOX 4898
 SPRINGFIELD, N. Y. 13201
UNITED TECHNOLOGIES
CARRIER

THIS DOCUMENT IS THE PROPERTY OF CARRIER CORPORATION
 AND IS TO BE USED ONLY FOR THE SPECIFIC UNIT AND MODEL
 IDENTIFIED HEREIN. IT IS NOT TO BE REPRODUCED OR
 COPIED IN ANY MANNER WITHOUT THE WRITTEN CONSENT
 OF CARRIER CORPORATION.

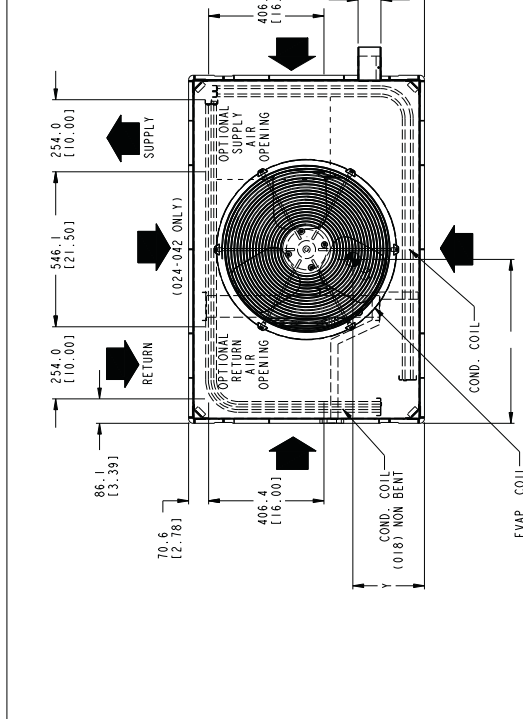
SUBMISSION OF THESE DRAWINGS OR DOCUMENTS
 DOES NOT CONSTITUTE PART PERFORMANCE OR
 ACCEPTANCE OF CONTRACT.

DATE	DESCRIPTION	DATE	DESCRIPTION
05/07/99	10/27/98	10/27/98	SUPERSEDES

48GS018-042/48GS024-036
SINGLE ZONE ELECTRIC COOLING WITH GAS HEAT

48GS500258
REV C

UNIT	ELECTRICAL CHARACTERISTICS		UNIT HEIGHT			CENTER OF GRAVITY MM/IN			
	AMPS	WATTS	"A"	Y	Z	Y	X	Z	
48GS018040	249	112.9	889-5135-021	508.0	120.01	355.6	114.01	318.0	115.01
48GS024040/0660	280	127.0	889-5135-021	571.5	122.51	330.2	113.01	381.0	115.01
48GS030040/0660	280	127.0	889-5135-021	546.1	121.51	349.3	113.751	381.0	115.01
48GS036060/0990	314	142.4	889-5135-021	571.5	122.51	355.6	114.01	330.2	113.01
48GS042060/0990	355	161.0	889-5135-021	546.1	121.51	342.9	113.51	330.2	113.01
48GX024040/0660	290	131.5	889-5135-021	568.8	122.01	368.3	114.51	406.2	116.01
48GX030040/0660	313	142.0	991-1139-021	558.8	122.01	387.4	115.31	447.0	117.61
48GX036060/0990	321	145.6	889-5135-021	558.8	122.01	387.4	115.31	419.1	116.51



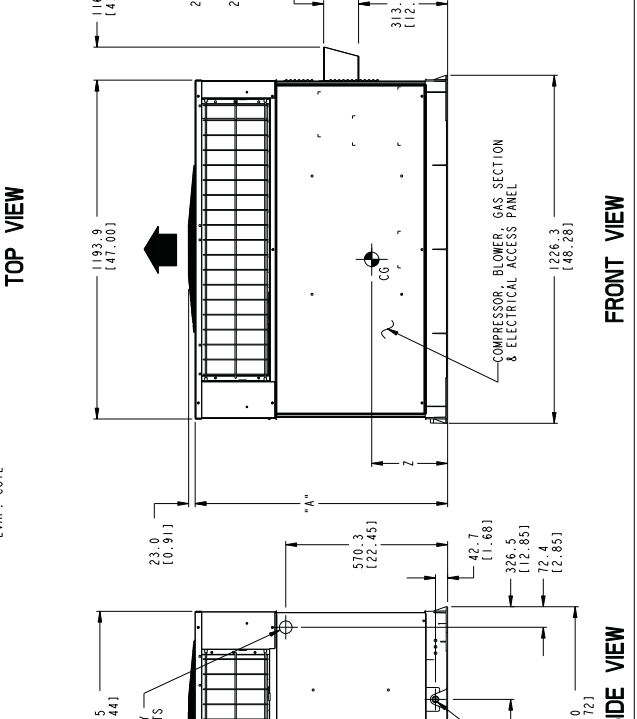
REQUIRED CLEARANCES TO COMBUSTIBLE MATL.

TOP OF UNIT.....355.6 (14.00)
 DUCT SIDE OF UNIT.....508.0 (20.00)
 SIDE OPPOSITE DUCTS.....355.6 (14.00)
 BOTTOM OF UNIT.....12.7 (0.50)
 FLUE PANEL.....914.4 (36.00)

NEC. REQUIRED CLEARANCES.
 BETWEEN UNITS, POWER ENTRY SIDE.....1066.8 (42.00)
 UNIT AND UNGROUNDED SURFACES, POWER ENTRY SIDE.....914.0 (36.00)
 UNIT AND BLOCK OR CONCRETE WALLS AND OTHER GROUNDED SURFACES, POWER ENTRY SIDE.....1066.8 (42.00)

REQUIRED CLEARANCE FOR OPERATION AND SERVICING
 EVAP. COIL ACCESS SIDE.....914.0 (36.00)
 POWER ENTRY SIDE.....914.0 (36.00)
 (EXCEPT FOR NEC REQUIREMENTS)
 UNIT TOP.....914.0 (36.00)
 SIDE OPPOSITE DUCTS.....914.0 (36.00)
 DUCT PANEL.....304.8 (12.00)

*MINIMUM DISTANCES: IF UNIT IS PLACED LESS THAN 304.8 (12.00) FROM WALL SYSTEM, THEN SYSTEM PERFORMANCE MAYBE COMPROMISED.

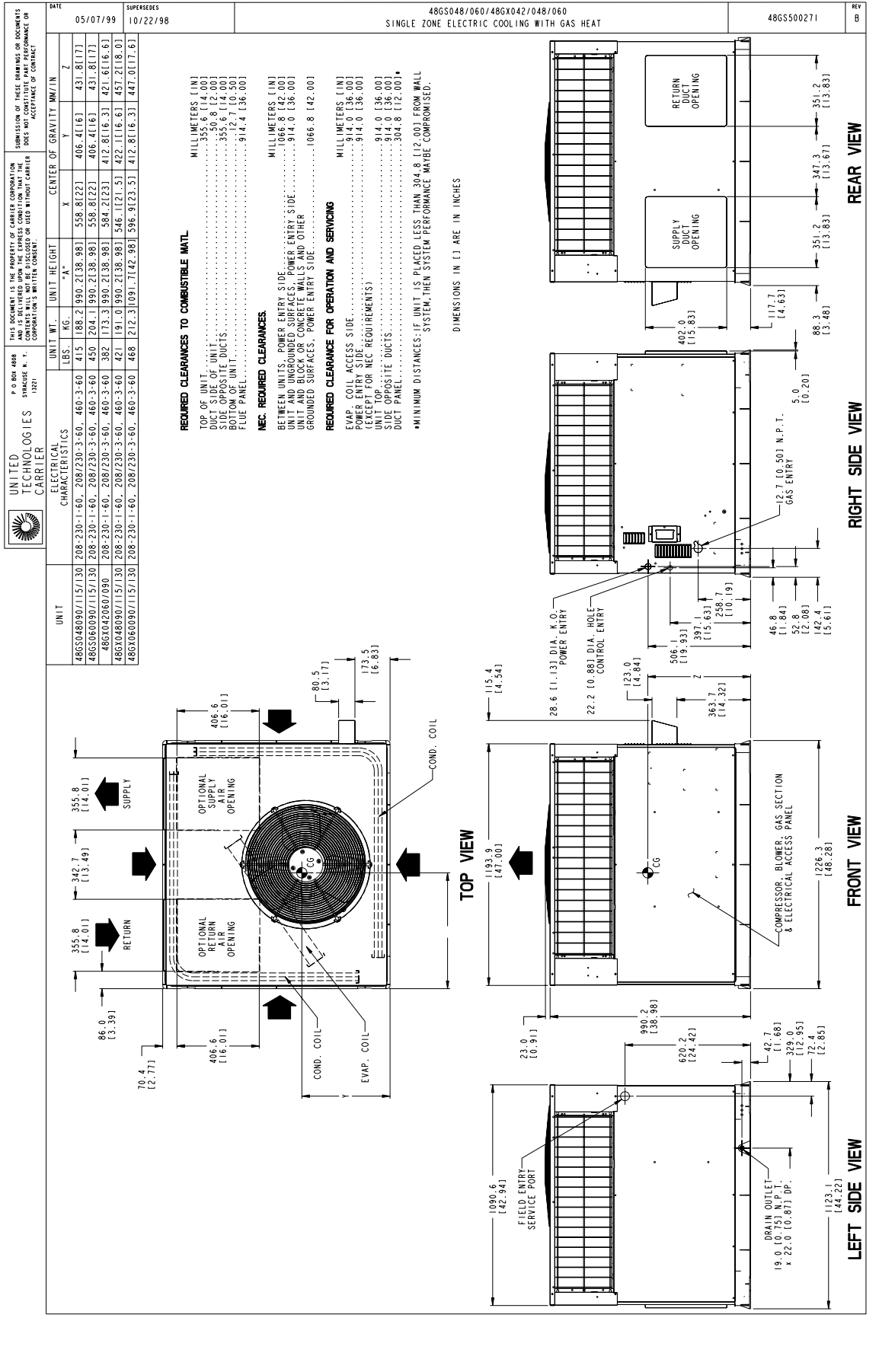


C00090

Cut along dotted line

Cut along dotted line

CERTIFIED DIMENSION PRINT



C00091

CERTIFIED DIMENSION PRINT

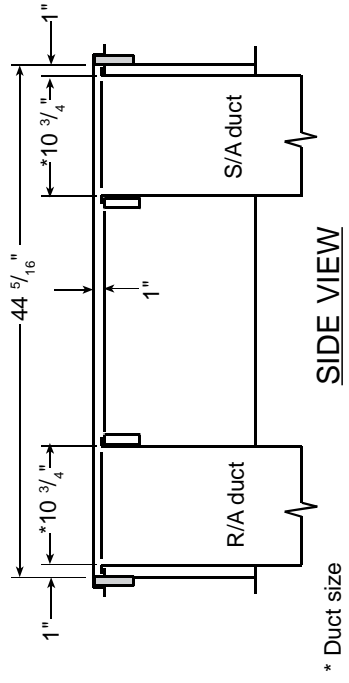
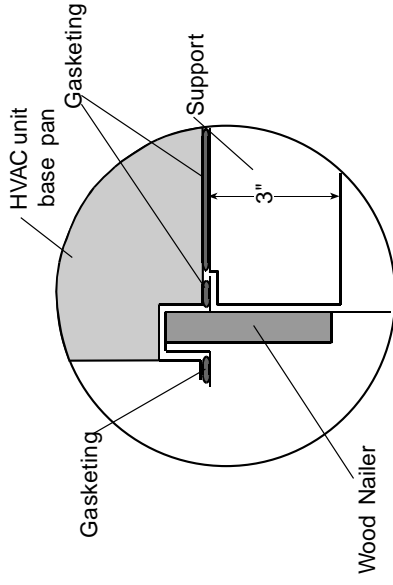
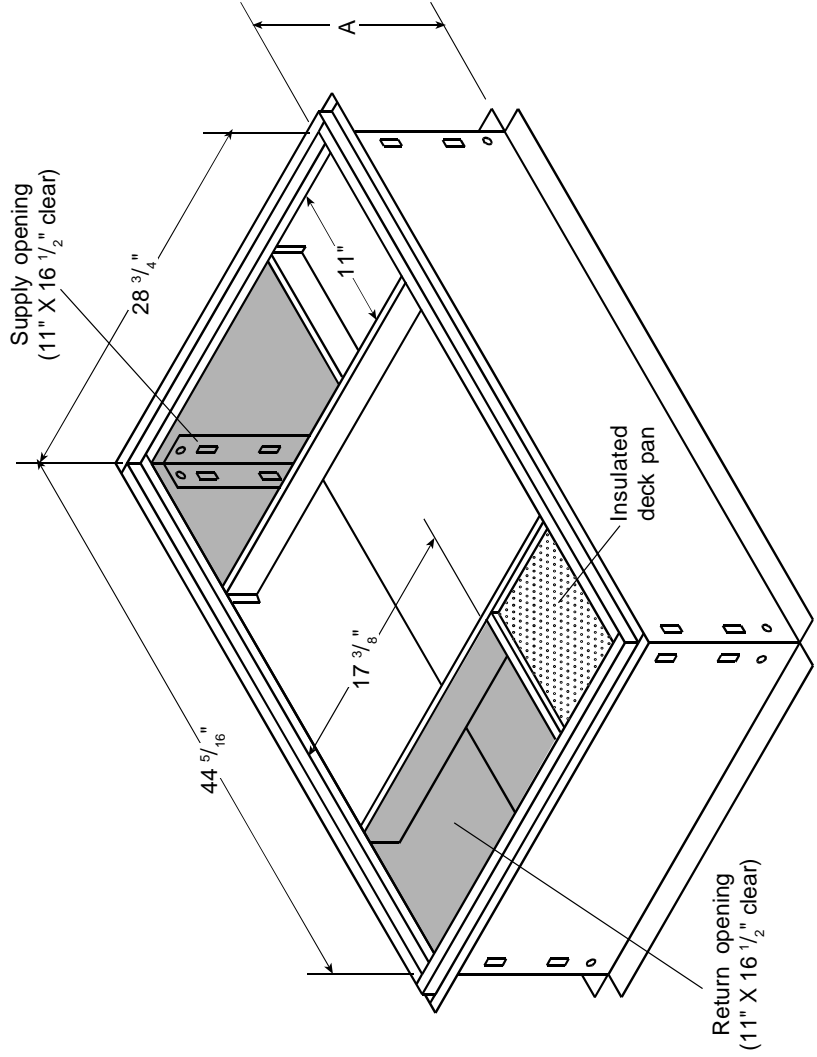
SUBMITTAL

Roof Curb for Small Cabinet

SUBMITTED TO _____
 COMPANY: _____
 DRAWN BY: A.L.L.
 JOB NAME: _____
 EQUIPMENT: _____
 NOTES: _____

ODS Catalog Ordering No.	A
CPCRFCURB006A00	8"
CPCRFCURB007A00	14"

- Feature:
- Constructed of heavy gage galvanized steel.
 - Roofcurb ships knocked down in corrugated box.
 - Quick-clip design for easy field assembly.
 - Insulated deck pan.
 - Gasketing package and hardware included.
 - Wood nailer provided.



Cut along dotted line

C00077

CERTIFIED ROOF CURB DIMENSION PRINT

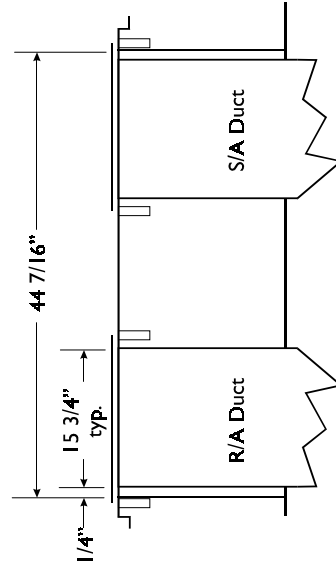
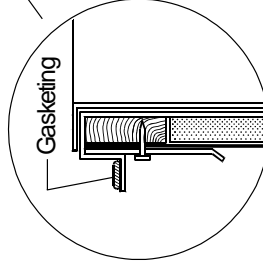
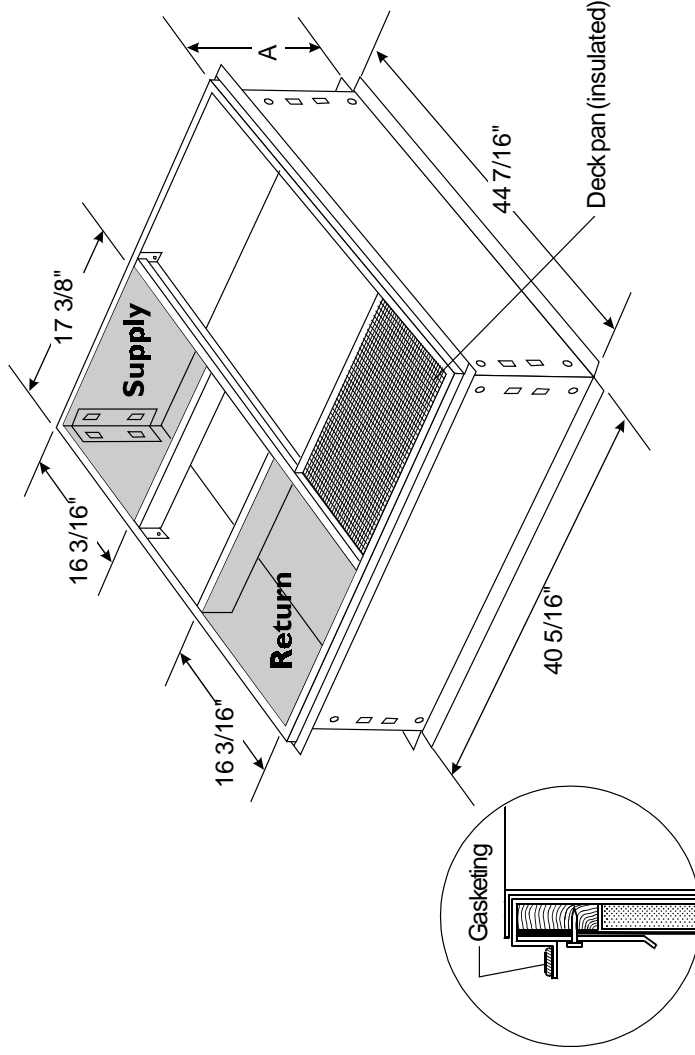
SUBMITTAL

Roof Curb for Large Cabinet

SUBMITTED TO: _____
 COMPANY: _____
 DRAWN BY: M.HARGIS
 JOB NAME: _____
 EQUIPMENT: _____
 NOTES: _____

FEATURES:

- Constructed of heavy gage galvanized steel.
- Quick-clip design for easy field assembly.
- Ships knocked down w/corrugated box.
- Gasket package for complete outer perimeter flange and around duct openings.
- Wood nailer provided.



ODS Catalog Ordering No.	A
CPRFCURB008A00	8"
CPRFCURB009A00	14"

