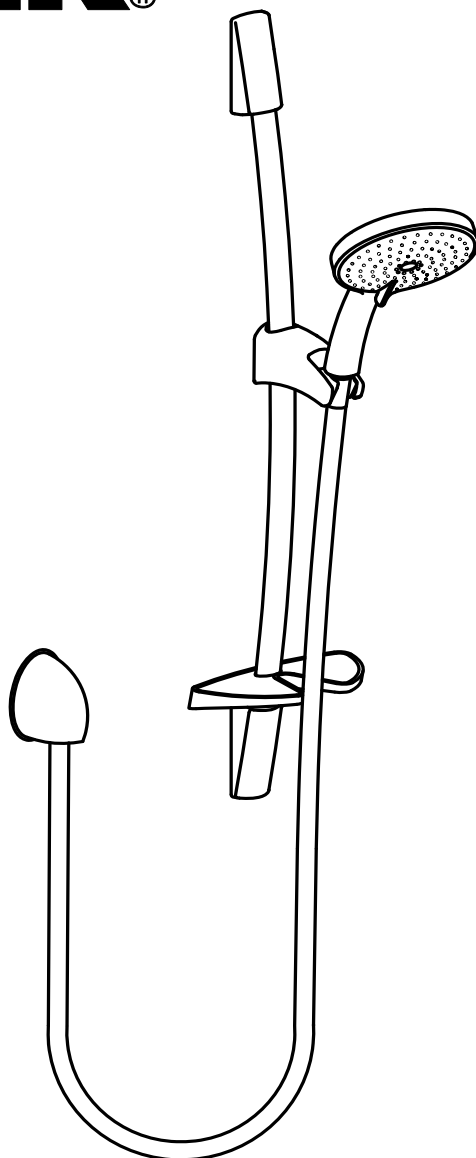


KOHLER®



Omega Slide Showers Installation and User Guide

MODEL NUMBERS

Omega 9
10742A-CP

Omega 11
10743A-CP

Omega 14
10744A-CP

Important! Please quote the appropriate model number when ordering spares

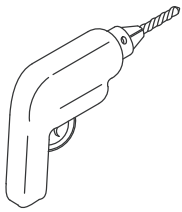
IMPORTANT

INSTALLER : This product manual is the property of the customer and must be retained with the product for maintenance and operational purposes.

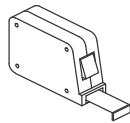
THANK YOU FOR CHOOSING KOHLER COMPANY

We appreciate your commitment to Kohler quality. Please take a few minutes to review this manual before you start the installation. If you encounter any installation or performance problems please don't hesitate to contact us. Our phone numbers and website are listed on the back cover. Thanks again for choosing Kohler Company.

TOOLS & MATERIALS



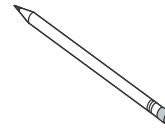
Drill and
Assorted Bits



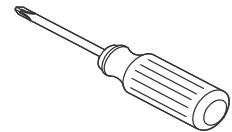
Tape
Measure



Level



Pencil



Phillips
Screwdriver

BEFORE YOU BEGIN

1. Observe all local plumbing and building codes.
2. Shut off the main water supply.
3. Kohler Co. reserves the right to make revisions in the design of products without notice.

TECHNICAL SPECIFICATIONS

1. Suitable for mains, unequal and low pressures
2. Minimum recommended operating pressure: 50 Kpa
3. Maximum recommended operating pressure: 500 Kpa
4. Maximum operating Temperature: 70°C
5. Silverflex hose length: 1.5m
6. Elbow connection 1/2" BSP
7. 3 Star WELS rating regulated between 7.5 and 9.0 litres/minute

INSTALLATION

1. Press rail into the brackets and mark the wall through the screw holes with a pencil. (Ensure that the rail is vertical).
2. Drill 4 holes in the marked position and place plugs into holes.
3. Place the Slider, the soap dish and the bracket covers onto the slide rail.
4. Screw the slide rail to the wall and fit the bracket cover
5. Fit the soap dish onto the bottom bracket cover.
6. Install the Outlet Elbow to the G 1/2" nipple using thread tape.
7. Thoroughly flush the plumbing before installing the Showerhead.
8. Check for placement of rubber washers in each end of the Silverflex hose.
9. Connect the shower hose to the Outlet Elbow and handpiece.

CARE AND CLEANING

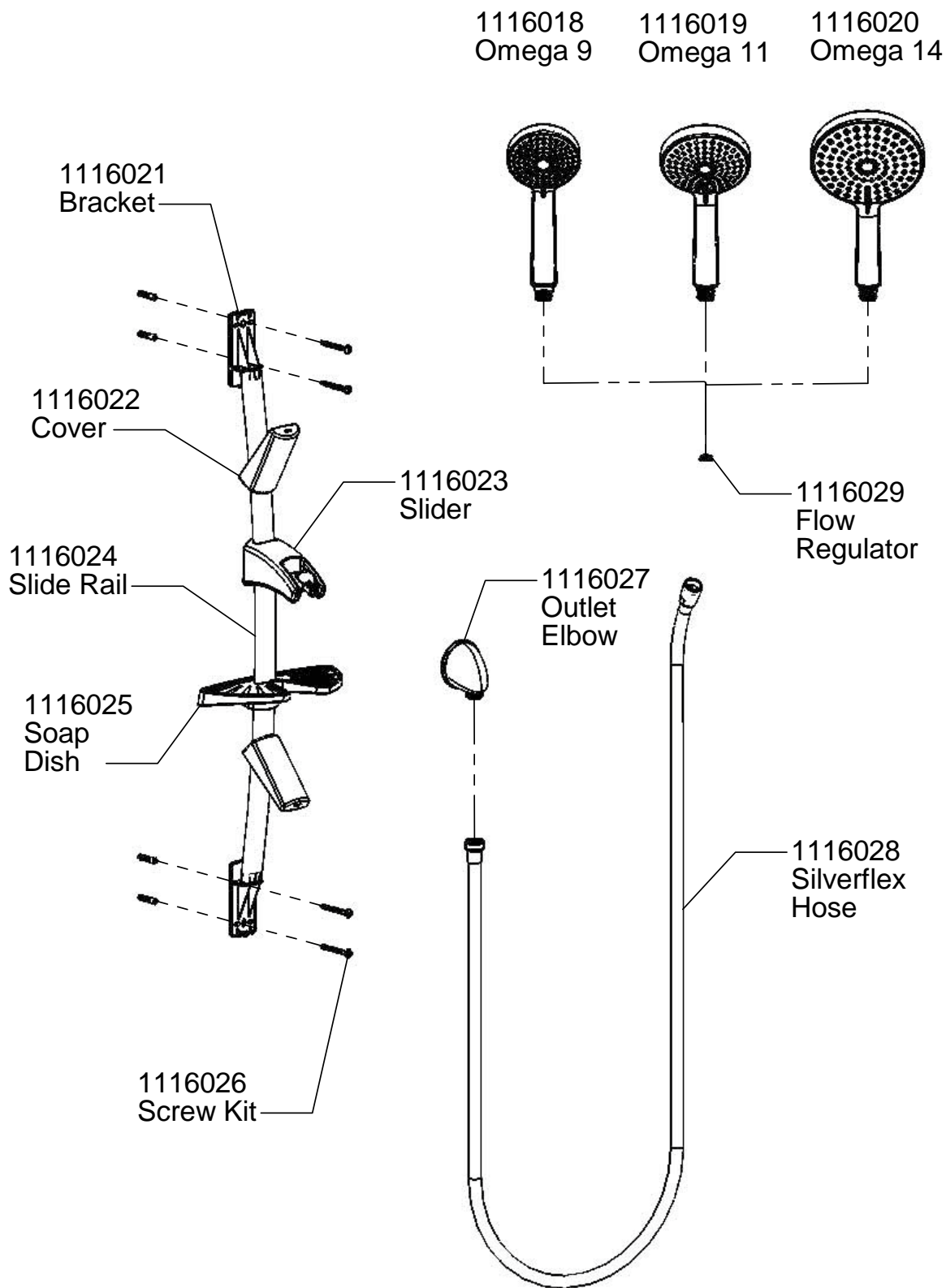
Like anything of lasting quality, Kohler tapware and fittings require a certain amount of periodic care to preserve their lustrous finish. Clean your new Kohler tapware and fittings with a mild soap, rinse thoroughly with warm water and dry with a clean, soft cloth. The ideal cleaning technique is to always blot dry any water from metal surfaces.

Allowing water to evaporate on metal will form water deposits. It is important to use a dabbing action to dry metal, not an abrasive or rubbing action.

Never use cleaners containing abrasive cleansers, ammonia, bleach, acids or chemicals that can damage the finish. By taking the time to dry your tapware often, soap and water deposits can be prevented.

Failure to comply with these instructions may void Kohler's warranty obligations.

SERVICE PARTS



CUSTOMER CARE

Kohler Co. warrants its tapware manufactured after January 1, 2006, to be leak and drip free during normal residential use for as long as the original consumer purchaser owns his/her home. *If the tapware should leak or drip during normal use, Kohler will, free of charge, mail to the purchaser the cartridge necessary to put the tapware in good working condition.

Kohler also warrants all other aspects of the tapware, to be free of defects in material and workmanship during normal residential use for as long as the original consumer purchaser owns his/her own home. If a defect is found in normal residential use, Kohler Co. will, at its election, repair, provide a replacement part or product, or make appropriate adjustment. Damage to a product caused by accident, misuse, or abuse is not covered by this warranty. Proof of purchase (original sales receipt) must be provided to Kohler with all warranty claims. Kohler Co. is not responsible for labour charges, installation, or other consequential costs. In no event shall the liability of Kohler exceed the purchase price of the tapware.

If the tapware is used commercially, Kohler warrants the tapware to be free from defects in material and workmanship for one (1) year from the date the product is installed, with all other terms of this warranty applying except duration.

If you believe that you have a warranty claim, contact Kohler Co., either through your plumbing supplies retailer, or by writing.

Australian residents please contact: Kohler Co., Attn.: Customer Service Department, PO Box 257, Regents Park, NSW 2143.

New Zealand residents please contact Kohler Co., Attn.: Customer Service Department, 133 Diana Drive, Glenfield, Auckland.

Please be sure to provide all pertinent information regarding your claim, including a complete description of the problem, the product, model number, colour, the date the product was purchased and from whom the product was purchased. Also include your original invoice. For other information, or to obtain the name and address of the service and repair facility nearest you, call 1300 362 284 from within Australia or (09) 980 6800 from within New Zealand.

The foregoing warranties are in lieu of all other warranties, express or implied, including but not limited to the implied warranties of merchantability and fitness for a particular purpose.

Seller disclaims any liability for special, incidental or consequential damages.

This warranty is to the original consumer purchaser only, and excludes product damage due to installation error, product abuse, or product misuse, whether performed by a contractor, service company, or the consumer. This is our exclusive written warranty.

SALES & SERVICE

NEW ZEALAND KOHLER NZ LTD.

Ph (09) 980 6800 Fax (09) 980 6899
Free Ph: 0800 100 382
Free Fax: 0800 664 488
info@kohler.co.nz
www.kohler.co.nz

AUSTRALIA KOHLER CO.

Free Ph: 1 300 362 284
Free Fax: 1 300 652 284
info@kohler.com.au
www.au.kohler.com