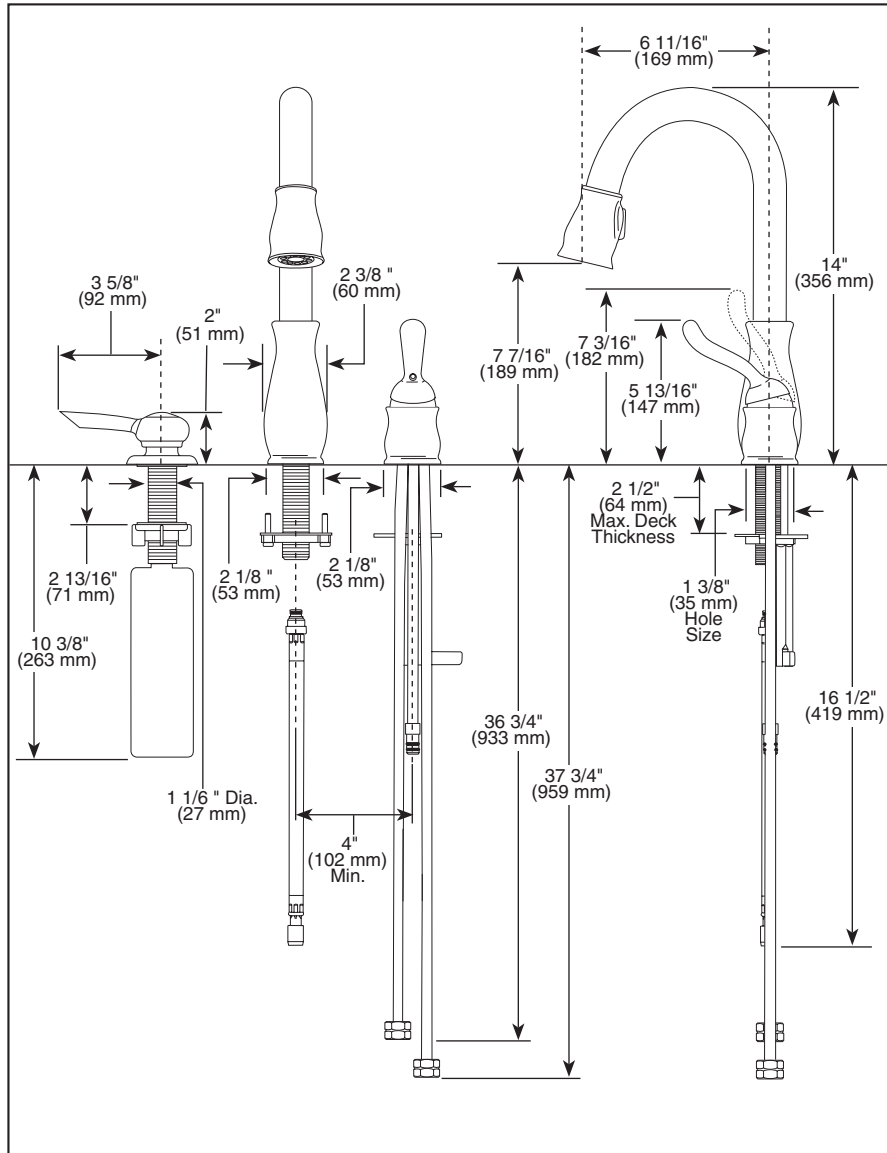


Submitted Model No.: \_\_\_\_\_  
 Specific Features: \_\_\_\_\_



## BAR / PREP SINK FAUCETS

- Leland® Collection
- Single Handle Widespread
- 2 Hole Sink Applications
- DIAMOND™ Seal Technology
- Integrated Supply Tubes
- 2-Function Pull-Down
- MagnaTite™ Docking System

### STANDARD SPECIFICATIONS:

- Single handle, 2-function pull-down kitchen faucets for exposed mounting on two hole sinks.
- 14" (356 mm) high, 6 11/16" (169 mm) long, spout swings 360°.
- Control mechanism shall be the diamond coated ceramic cartridge.
- Lever handle. Control shall return to neutral position when faucet is turned off.
- Finished handle button with red/blue graphics to indicate hot/cold temperature.
- Integral double check valves in sprayer assembly.
- Disposable hose lead to aid installation.
- Recommended hole size 1 3/8" (35mm) on 4" (102mm) centers.
- 3/8" O.D. straight, staggered pex supply tubes - 36 3/4" (934 mm) and 37 3/4" (959 mm) long.
- Touch-Clean® 2 function (stream spray) sprayhead.
- MagnaTite™ docking system secures sprayer to spout.

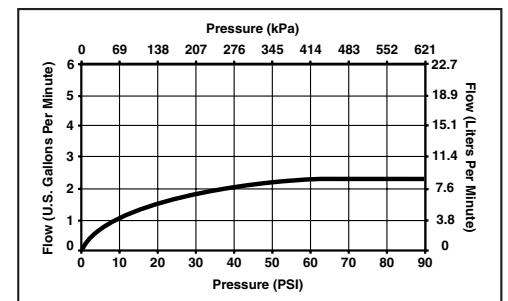
### WARRANTY

- Lifetime Faucet and Finish Limited Warranty to the original consumer purchaser to be free from defects in material and workmanship.
- 5 Year Limited Warranty for usage in all industrial, commercial and business applications.



### COMPLIES WITH:

- ASME A112.18.1 / CSA B125.1
- Indicates compliance to ICC/ANSI A17.1



55 E. 111th Street, Indianapolis, Indiana 46280  
 395 Matheson Blvd. E., Mississauga, ON L4Z 2H2  
 © 2008 Masco Corporation of Indiana

Delta reserves the right (1) to make changes in specifications and materials, and (2) to change or discontinue models, both without notice or obligation. Dimensions are for reference only. See current full-line price book or www.specselect.com for finish options and product availability.