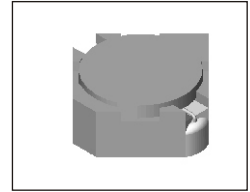


SMT Power Inductor

SILM315L Type

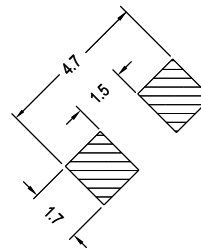
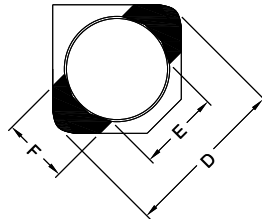
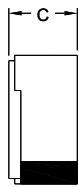
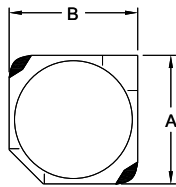
Features

- RoHS compliant.
- Low profile (1.5mm max. height) SMD type.
- Magnetically shielded, suitable for high density mounting.
- Self-leads, suitable for high density mounting.
- High energy storage and low DCR.
- Provided with embossed carrier tape packing.
- Ideal for power source circuits, DC-DC converter, DC-AC inverters inductor applications.
- In addition to the standard versions shown here, customized inductors are available to meet your exact requirements.



Mechanical Dimension:

RECOMMENDED PAD PATTERNS



UNIT:mm/inch
 A = 3.2 / 0.126 Max.
 B = 3.2 / 0.126 Max.
 C = 1.5 / 0.059 Max.
 D = 4.0 / 0.157 Max.
 E = 2.2 / 0.087
 F = 1.0 / 0.039

Electrical Characteristics: 25°C: 100KHz, 0.1V

| PART NO. | L ¹ (uH) | DCR (mΩ) MAX | Isat ² (Adc) | I _r ³ (Adc) |
|----------------|------------------------|-----------------|----------------------------|--------------------------------------|
| SILM315L - 2R2 | 2.2 | 108 | 0.90 | 1.00 |
| SILM315L - 3R3 | 3.3 | 168 | 0.70 | 0.90 |
| SILM315L - 4R7 | 4.7 | 240 | 0.60 | 0.85 |
| SILM315L - 5R6 | 5.6 | 264 | 0.55 | 0.80 |
| SILM315L - 6R8 | 6.8 | 288 | 0.52 | 0.77 |
| SILM315L - 8R2 | 8.2 | 420 | 0.48 | 0.72 |
| SILM315L - 100 | 10.0 | 480 | 0.45 | 0.70 |
| SILM315L - 120 | 12.0 | 540 | 0.40 | 0.65 |
| SILM315L - 150 | 15.0 | 720 | 0.35 | 0.50 |
| SILM315L - 180 | 18.0 | 816 | 0.30 | 0.40 |
| SILM315L - 220 | 22.0 | 960 | 0.25 | 0.30 |

1. Tolerance of inductance: ±30% for 2.2~8.2uH; ±20% for 10~22uH.
2. Isat is the DC current which cause the inductance drop 35% typical of its nominal inductance without current.
3. I_r is the DC current which cause the surface temperature of the part increase less than 45°C.
4. Operating temperature : -20°C to 105°C (including self-temperature rise).



DELTA ELECTRONICS, INC.

(TAOYUAN PLANT CPBG) 252, SAN YING ROAD, KUEISAN INDUSTRIAL ZONE, TAOYUAN SHIEN, 333, TAIWAN, R.O.C.

TEL: 886-3-3591968; FAX: 886-3-3591991

<http://www.deltawww.com>