

EPSON Stylus® Photo 900

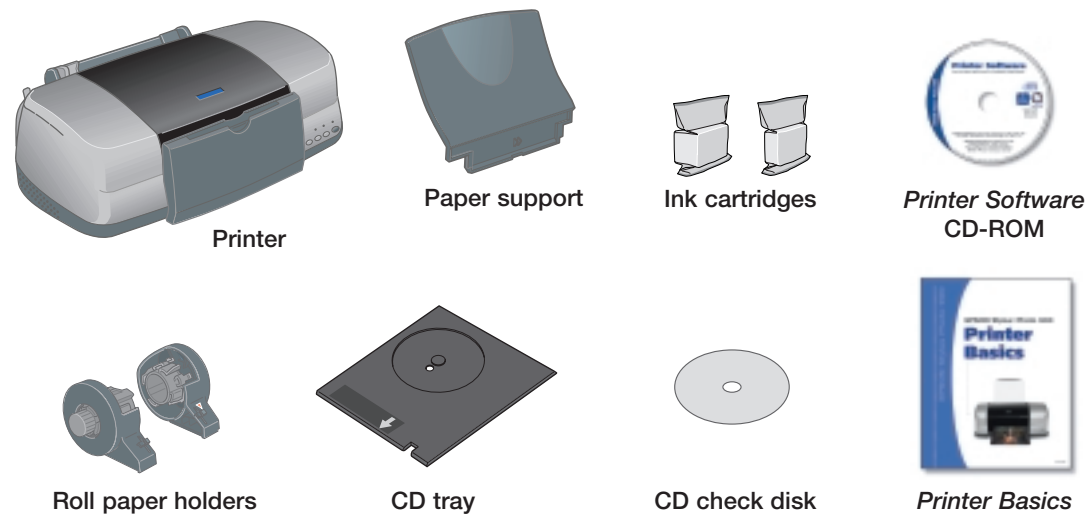
# Start Here



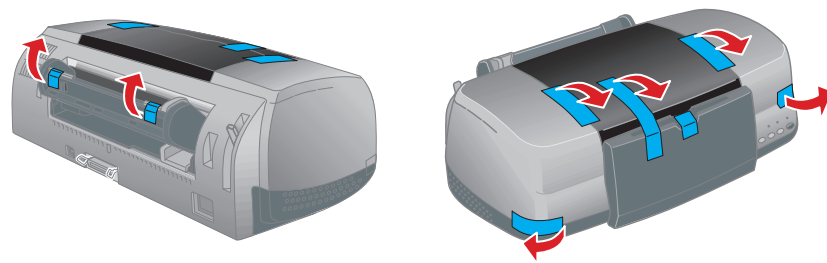
CPD-15860R1

## 1 Unpack

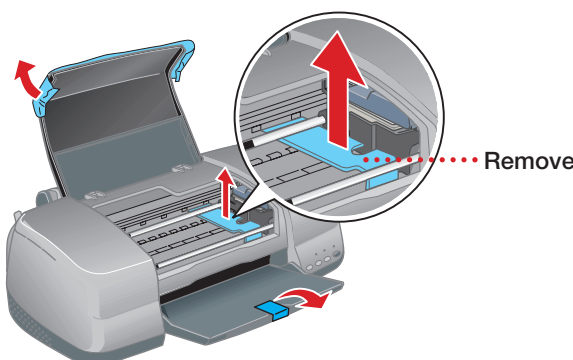
1 Remove everything from the box.



2 Remove all the blue tape and packing materials inside and around the printer.



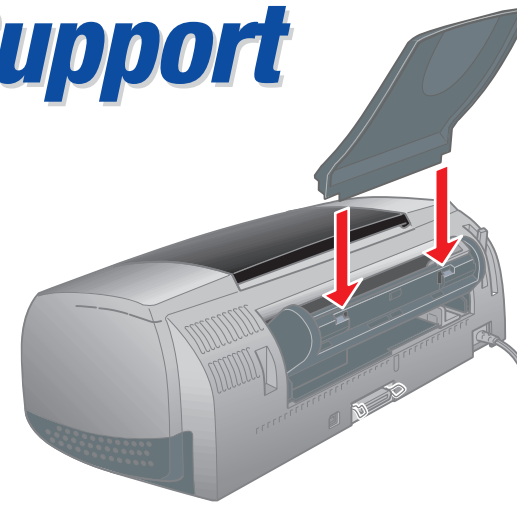
3 Open the printer cover and remove the plastic piece from the ink cartridge holder.



## 2 Attach the Paper Support

Insert the paper support into its slots on the back of the sheet feeder.

(To install the roll paper holders, see your *Printer Basics* book.)



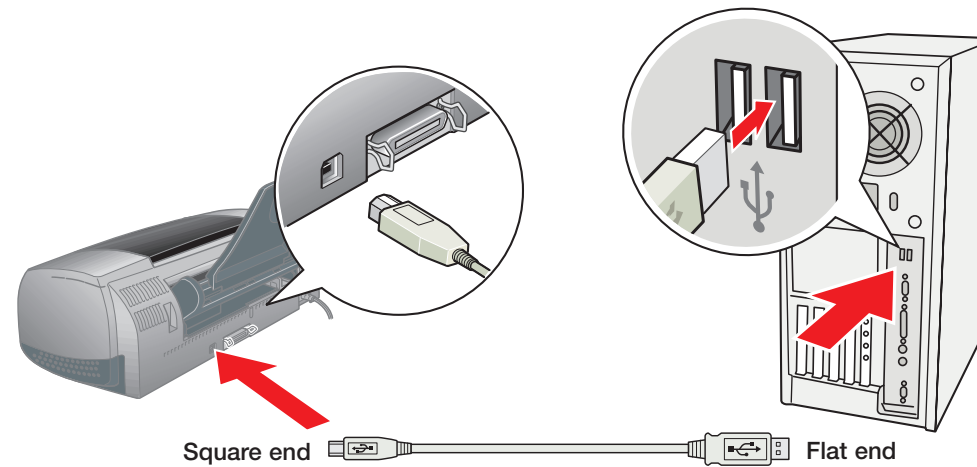
## 3 Connect the Printer

Connection cables are not included with your printer. You need only one of the following cables:

- USB cable (PC and Mac®) or
- Parallel cable (PC only)

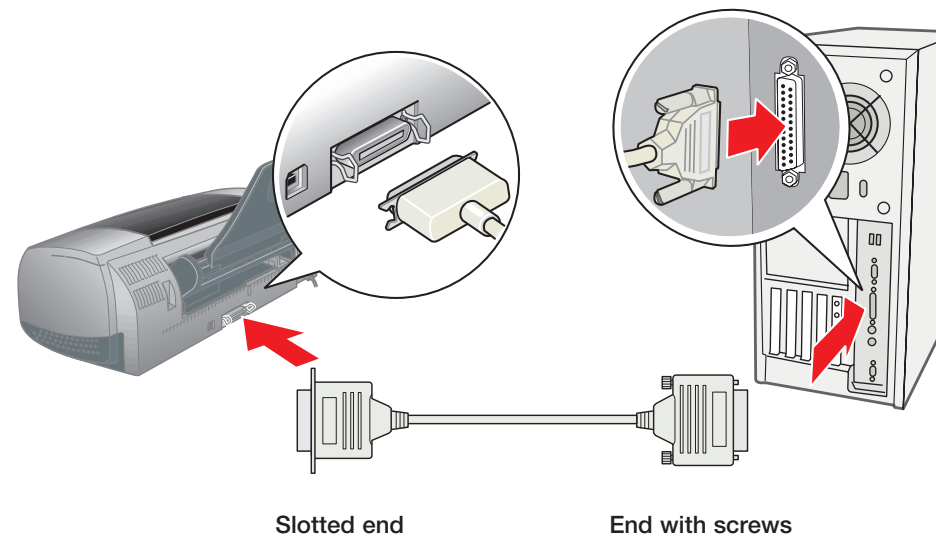
### USB Cable Users (PC and Mac)

- 1 Shut down your computer. In Windows®, click **Start** and select your **Shut Down** or **Turn Off** option.  
Leave your computer turned off until section 7.
- 2 Plug the square end of the cable into your printer's USB port until it stops.
- 3 Plug the flat end of the cable into your computer's USB port until it stops. (You can use any open USB port.)



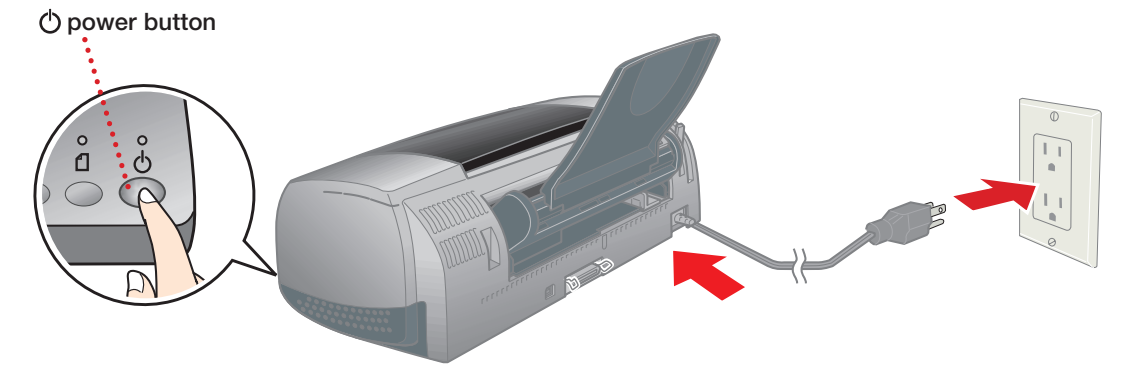
### Parallel Cable Users (PC only)

- 1 Shut down your computer. In Windows, click **Start** and select your **Shut Down** or **Turn Off** option.  
Leave your computer turned off until section 7.
- 2 Plug the end of the cable with the slotted connector into your printer's parallel port, then secure it with the wire clips.
- 3 Plug the other end of the cable into your computer's parallel port and secure it with the screws.



## 4 Turn On the Printer

1 Plug the printer's power cord into a grounded electrical outlet.

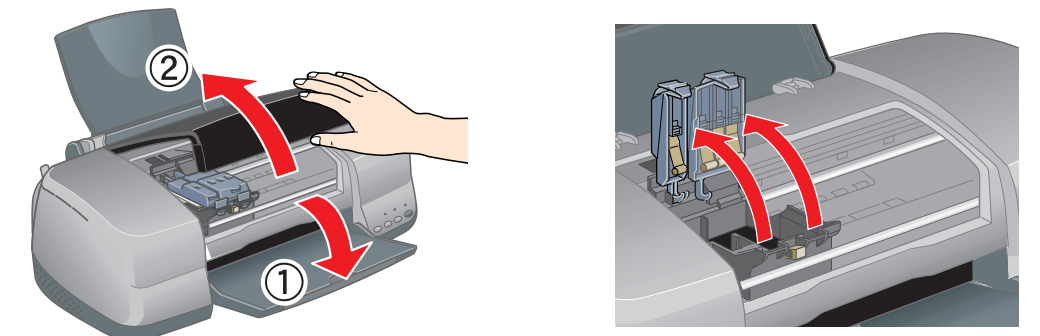


2 Press and release the power button to turn it on.

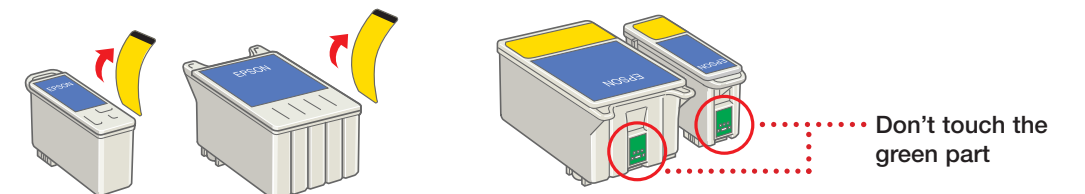
**CAUTION:** Never use an external switch, such as a wall switch or power strip switch, to turn the printer on or off.

## 5 Install Ink Cartridges

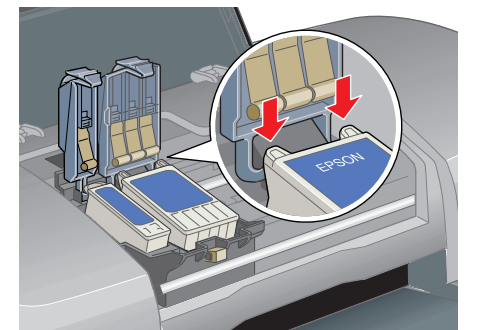
1 Open the output tray and the printer cover. Then lift up both ink cartridge clamps.



2 Unwrap the ink cartridges and remove the yellow tape.

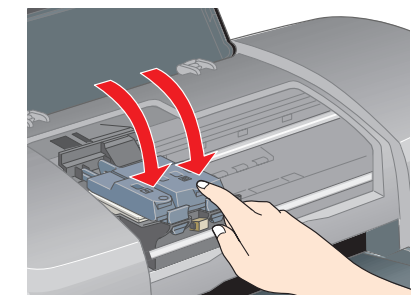


3 Lower each cartridge into the holder. Make sure the tabs rest on the hooks in the back.



**CAUTION:** You must install both cartridges or the printer won't work.

4 Press down on the ink cartridge clamps until they click into place.

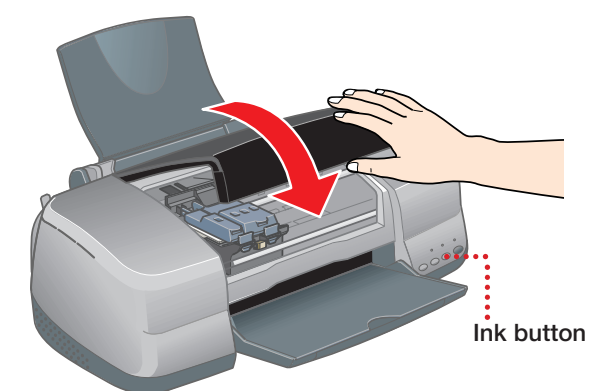


5 Close the printer cover.

6 Press the ink button.

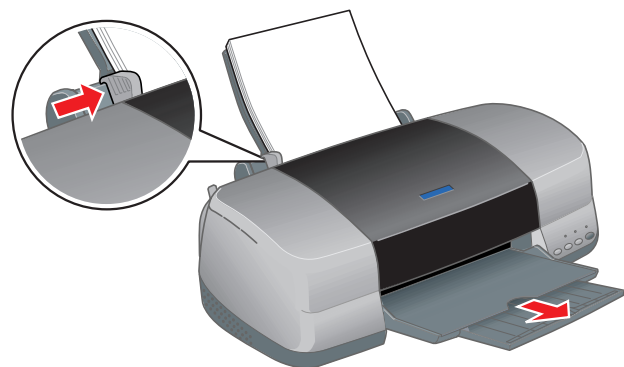
The green power light flashes as your printer charges ink for about 2 minutes.

**CAUTION:** Don't turn off the printer or interrupt charging while the power light is flashing or you'll waste ink.



# 6 Load Paper

- 1 Fan your paper and place it against the right side of the sheet feeder (up to the arrow inside the edge guide).
- 2 Slide the edge guide to fit lightly against the paper.
- 3 Pull out the output tray extension.



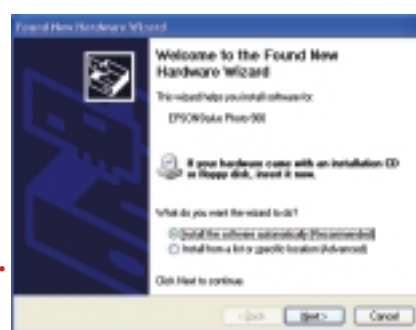
# 7 Install Software

## Windows

Follow the steps below to install the software for your operating system.

### Windows XP

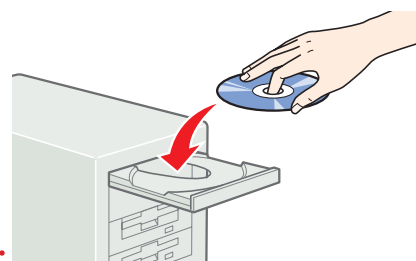
- 1 Make sure your printer is connected and turned on. Then turn on your computer.
- 2 Wait for Windows to detect your printer and display a screen like this:



**DON'T CLICK ANY BUTTONS ON THIS SCREEN.**

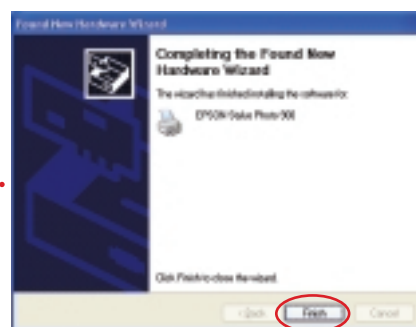
*NOTE: If a screen like this doesn't appear, make sure your printer is turned on and connected.*

- 3 Put the EPSON® CD-ROM in your CD-ROM or DVD drive and wait a few seconds for it to be recognized.



Your printer software installs automatically and various messages appear on the screen.

- 4 When the software is done installing, click **Finish**.



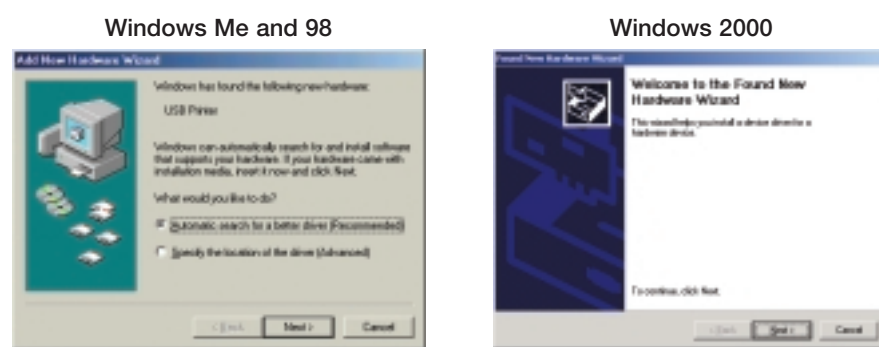
- 5 When you see the license agreement, read it and click **Agree**. You see this screen.



Now go to "Installing Optional Software" in the next column.

### Windows Me, 98, and 2000

- 1 Make sure your printer is connected and turned on. Then turn on your computer.
- 2 Wait for Windows to detect your printer and display a New Hardware Wizard screen—but don't click any buttons on the screen yet.

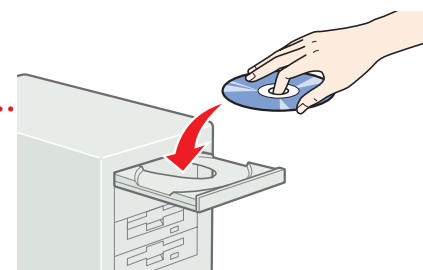


**DON'T CLICK ANY BUTTONS YET.**

*NOTE: If you don't see a New Hardware Wizard, make sure your printer is turned on and connected. Your screen may look slightly different from these examples.*

Continued

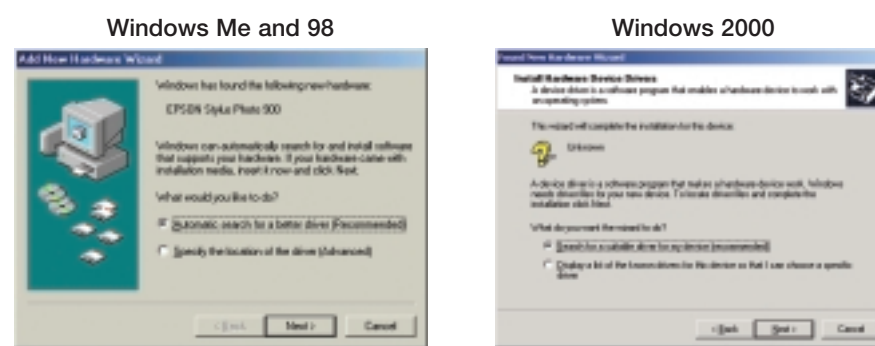
- 3 Put the EPSON CD-ROM in your CD-ROM or DVD drive and wait a few seconds for it to be recognized.



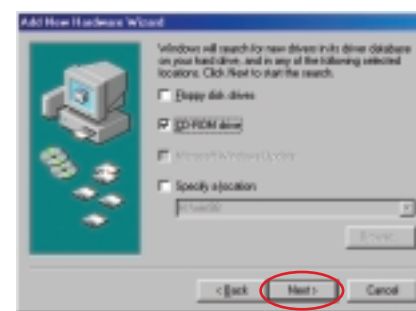
**Windows Me:** Various messages may flash briefly on the screen. When this process is over, continue with the steps below.

- 4 Click **Next** or **Finish** on the remaining screens, as needed, to complete the installation.

- If Windows asks how to find the driver software, select the **Automatic search** or **Search for** option, then click **Next**. (Your screen may look slightly different.)



- If Windows asks where to search for new drivers, click **CD-ROM drive**, then click **Next**. Make sure Specify a location is not checked.



- 5 When you see the license agreement, read it and click **Agree**. You see this screen.



Continue with the steps below to finish installing software.

### Installing Optional Software

- 1 Click **EPSON Printer Information Center**, and follow the instructions on the screen to install it on your desktop.



- 2 Click **Photo Software** and click the button for each program to learn more about it. If you want the program, click **Install** and follow the instructions on the screen.

*NOTE: If you see a message about installing QuickTime®, click Yes and follow the instructions on the screen. You don't need a registration number.*

*At the end of Film Factory™ or QuickTime installation, deselect the option to launch the program.*

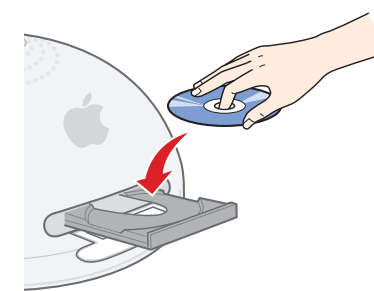
- 3 When you're finished, close any open windows on the screen and click **Back**.
- 4 Click **CD Printing Software**, then follow the instructions on the screen to install EPSON Print CD.
- 5 Close any open windows on the screen and click **Exit** at the Optional Software menu.
- 6 When you see the registration screen, register your printer with EPSON as instructed.
- 7 Remove the CD-ROM and keep it in case you need to reinstall any software later.
- 8 Restart your computer if prompted.

You're ready to print! See section 8.

## Macintosh® OS X

If you're using Macintosh OS 8.6 to 9.x, see "Installing Your Printer Software" in the *Printer Basics* book.

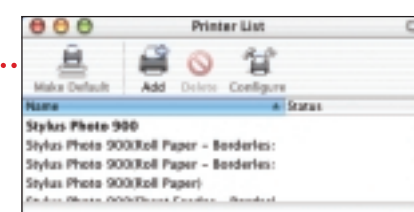
- 1 Make sure your printer is connected and turned on. Then turn on your Macintosh.
- 2 Put the EPSON CD-ROM in your CD-ROM or DVD drive.
- 3 Select the **EPSON CD-ROM** icon on your desktop, then double-click the **EPSON OS X Installer** icon in the window that opens.
- 4 When you see the license agreement, read it and click **Agree**. You see this screen:
- 5 Click **Printer Driver** and follow the instructions on the screen to install the software and restart your Macintosh.
- 6 After your Macintosh restarts, open the **Applications** folder for OS X, then open the **Utilities** folder and select **Print Center**.
- 7 Click **Stylus Photo 900** in the Printer List window and click the **Add** icon.



*NOTE: If you don't see your printer in the Printer List, make sure the printer is turned on and connected.*

- 8 Select **EPSON USB** in the drop-down menu, select **Stylus Photo 900**, then select **All** from the Page Setup drop-down menu.

- 9 Click **Add**. You see this screen:



- 10 Press **⌘-Q** to close Print Center, then close Utilities.

- 11 Double-click the **EPSON CD-ROM** icon, then click the **EPSON OS X Installer** icon in the window that opens.

- 12 Click **EPSON Printer Information Center**, then follow the on-screen instructions to install it on your desktop.

- 13 Click **Photo Software** and click the button for each program to learn more about it. If you want the program, click **Install** and follow the instructions on the screen. When done installing the photo software, click **Back** to return to the Install Menu.

*NOTE: If you see a message about installing QuickTime®, click Yes and follow the instructions on the screen. You don't need a registration number.*

- 14 Click **CD Printing Software**, then follow the instructions on the screen to install the Discus™ software.

- 15 When you're finished, click **Quit**, then click **Exit** at the Install Menu.

- 16 When you see the registration screen, register your printer with EPSON as instructed.

- 17 Remove the CD-ROM and keep it in case you need to reinstall any software later.

You're ready to print! See the next section.

# 8 Print

Now you're ready to print. For instructions, use these resources:

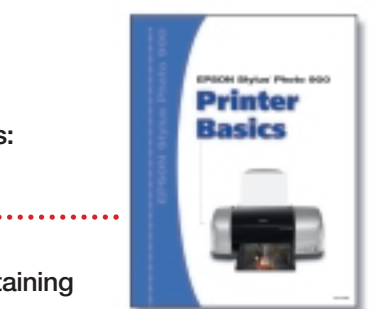
- Your **Printer Basics** book

Learn about loading paper, printing photos and CDs, maintaining your printer, solving problems, and contacting EPSON.

- **EPSON Printer Information Center** on your desktop

Click **Print Show** to view helpful animations that show you how to load paper, CDs, and roll paper, and change an ink cartridge.

Click **User's Guide** to view detailed information about your printer.



EPSON and EPSON Stylus are registered trademarks of SEIKO EPSON CORPORATION.

General Notice: Other product names are for identification purposes only and may be trademarks of their respective owners. EPSON disclaims any and all rights in those marks.

Printed on recycled paper. Copyright © 2003 by Epson America, Inc. 5/03

Printed in USA