

# Panasonic®

## Personal Computer OPERATING INSTRUCTIONS

Model No. **CF-07 Series**



**TOUGHBOOK**

98 2000

### [Additional Manual]

#### Reference Manual

This manual can be accessed on your computer.

Refer to page 28 on how to access the Reference Manual.

In this manual, the term "external display" indicates a "wired" display with an RGB analog 15-pin interface.

## Contents

### Getting Started

Read Me First .....	4
First-time Operation .....	12

#### Reference Manual

- LED Indicators

### Operation

Starting Up/Shutting Down .....	24
Reference Manual .....	28

#### Reference Manual

- Standby/Hibernation Functions
- Security Measures
- Computing On the Road
- Battery Power
- CD-ROM Drive\*
- PC Cards
- Port Replicator\*
- Printer\*
- External Display\*
- USB Devices
- LAN\*
- Setup Utility\*

### Troubleshooting

List of Error Codes* .....	30
Dealing with Problems (Summary) .....	32
Reinstalling Software .....	36

#### Reference Manual

- Technical Information
- DMI Viewer
- List of Error Codes\*
- Dealing with Problems (Advanced)

### Appendix

LIMITED USE LICENSE AGREEMENT .....	40
Names and Functions of Parts .....	44
Specifications .....	46
LIMITED WARRANTY .....	48

\* Only when the port replicator is connected

Getting Started

Operation

Troubleshooting

Appendix

Please read these instructions carefully before using this product and save this manual for future use.

## Customer's Record

Model No.\*1

Dealer's Name

Serial No.

or

Code No.

Dealer's Address

Product Key\*2

Date of Purchase

\*1 For the Model No., insert the 12 digit number (for example, CF-07LZ5ZYEM) located on the bottom of the computer.

\*2 For Product Key write down the number shown on the "Certificate of Authenticity" located on the bottom of the computer.

### Introduction

Thank you for purchasing the Panasonic computer. Read the operating instructions thoroughly for proper operation of your new computer.

## Illustrations and Terminology in this Manual

**NOTE:**

**NOTE** provides a useful fact or helpful information.

**CAUTION:**

**CAUTION** indicates a condition that may result in minor or moderate injury.

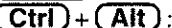
**WARNING:**

**WARNING** indicates a hazard that may result in moderate or serious injury.

[Start] - [Shut Down]: This illustration means to click [Start], then to click [Shut Down]. (For some applications, you may need to double-click.)

 **Enter** :

This illustration means to press the [Enter] key.

 **Ctrl** + **Alt** :

This illustration means to press and hold the [Ctrl] key, then press the [Alt] key.

 **Windows 98** :

Information for Microsoft® Windows® 98 users.

 **Windows 2000** :

Information for Microsoft® Windows® 2000 Professional users.



Where to go for referred information.



Reference  
Manual

This illustration means to refer to the Reference Manual, which is available on your computer.

Refer to page 28 on how to access this manual.

- Some of the illustrations in this manual may differ slightly in shape from the actual items in order to make the explanation easier to understand.

## Copyright

This manual is copyrighted by Matsushita Electric Industrial Co., Ltd. with all rights reserved. No part of this manual may be reproduced in any form without the prior written permission of Matsushita Electric Industrial Co., Ltd.

No patent liability is assumed with respect to the use of the information contained herein.

©2001 Matsushita Electric Industrial Co., Ltd. All Rights Reserved.

## Disclaimer

Computer specifications and manuals are subject to change without notice. Matsushita Electric Industrial Co., Ltd. assumes no liability for damage incurred directly or indirectly from errors, omissions or discrepancies between the computer and the manuals.

## Trademarks

Microsoft®, MS-DOS® and Windows® are registered trademarks of Microsoft Corporation of the United States and/or other countries.

Pentium® is a registered trademark of Intel Corporation.

Adobe® and Acrobat® are either registered trademarks or trademarks of Adobe Systems Incorporated in the United States and/or other countries.

Panasonic® is a registered trademark of Matsushita Electric Industrial Co., Ltd.

# Read Me First

## Information to the User

### This product and your Health

This product, like other radio devices, emits radio frequency electromagnetic energy. The level of energy emitted by this product however is far much less than the electromagnetic energy emitted by wireless devices like for example mobile phones.

Because this product operates within the guidelines found in radio frequency safety standards and recommendations, we believe this product is safe for use by consumers. These standards and recommendations reflect the consensus of the scientific community and result from deliberations of panels and committees of scientists who continually review and interpret the extensive research literature. In some situations or environments, the use of this product may be restricted by the proprietor of the building or responsible representatives of the organization. These situations may for example include:

- Using this product on board of airplanes, or
- In any other environment where the risk of interference to other devices or services is perceived or identified as harmful.

If you are uncertain of the policy that applies on the use of wireless devices in a specific organization or environment (e.g. airports), you are encouraged to ask for authorization to use this product prior to turning on the product.

### Regulatory Information

We are not responsible for any radio or television interference caused by unauthorized modification of this product. The correction of interference caused by such unauthorized modification will be the responsibility of the user. We and its authorized resellers or distribu-

tors are not liable for damage or violation of government regulations that may arise from failing to comply with these guidelines.

## For U.S.A.

### Federal Communications Commission Radio Frequency Interference Statement

Note: This equipment has been tested and found to comply with the limits for a Class B digital device, pursuant to Part 15 of the FCC Rules. These limits are designed to provide reasonable protection against harmful interference in a residential installation. This equipment generates, uses and can radiate radio frequency energy and, if not installed and used in accordance with the instructions, may cause harmful interference to radio communications. However, there is no guarantee that interference will not occur in a particular installation. If this equipment does cause harmful interference to radio or television reception, which can be determined by turning the equipment off and on, the user is encouraged to try to correct the interference by one or more of the following measures:

- ➊ Reorient or relocate the receiving antenna.
- ➋ Increase the separation between the equipment and receiver.
- ➌ Connect the equipment into an outlet on a circuit different from that to which the receiver is connected.
- ➍ Consult the Panasonic Service Center or an experienced radio/TV technician for help.

#### Warning

To assure continued compliance, use only shielded interface cables when connecting to a computer or peripheral. Also, any changes or modifications not expressly approved by

the party responsible for compliance could void the user's authority to operate this equipment.

**FCC RF Exposure Warning:** This computer is provided with PC Card slots that could be used with wireless transmitter(s), which will be specifically recommended, when they become available. Other third-party wireless transmitter(s) have not been RF exposure evaluated for use with this computer and may not comply with FCC RF exposure requirements.

This device complies with Part 15 of the FCC Rules. Operation is subject to the following two conditions:

- (1) This device may not cause harmful interference, and
- (2) This device must accept any interference received, including interference that may cause undesired operation.

**Responsible Party:** Matsushita Electric Corporation of America

One Panasonic Way  
Secaucus, NJ 07094  
Tel No: 1-800-LAPTOP-5  
(1-800-527-8675)

**CAUTION:** To comply with FCC RF exposure requirements, For body worn operation, this product has been tested and meets the FCC RF exposure guidelines when used with the Panasonic accessories supplied or designated for this product. Use of other accessories may not ensure compliance with FCC RF exposure guidelines.

## For Canada

### Industry Canada

This product complies with RSS210 of Industry Canada.

Operation is subject to the following two conditions:

- (1) this device may not cause interference, and
- (2) this device must accept any interference, including interference that may cause undesired operation of the device.

## Lithium Battery

### Lithium Battery!

This computer contains a lithium battery to enable the date, time, and other data to be stored. The battery should only be exchanged by authorized service personnel.

Warning! A risk of explosion from incorrect installation or misapplication may possibly occur.

### Pile au lithium!

Le micro-ordinateur renferme une pile au lithium qui permet de sauvegarder certaines données comme la date et l'heure notamment. Elle ne devra être remplacée que par un technicien qualifié.

Avertissement! Risque d'explosion en cas de non respect de cette mise en garde!

## Precautions

### Usage

#### Avoid Extreme Heat and Cold

Do not store or use the computer in locations exposed to heat, direct sunlight, or extreme cold.

Avoid moving the computer between locations with large temperature difference.

Operation: 5 °C to 35 °C  
{41 °F to 95 °F}

Storage: -20 °C to 60 °C  
{-4 °F to 140 °F}



#### Avoid Humidity, Liquids and Dust

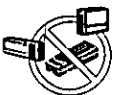
Do not store or use the computer in locations exposed to high humidity, liquids (including rain) or dust.

Before putting the computer away, be sure to wipe off any moisture.



#### Prevent Shock

Avoid subjecting the computer to severe vibrations or impact. Do not place the computer inside a car trunk.



#### Avoid Radio Frequency Interference

Do not place the computer near a television or radio receiver.



#### Avoiding low-temperature burns

Avoid more than casual contact with any heat producing area of the notebook computer, AC adap-

tor, and any option or accessory you use with it. Even low heat, if warmer than body temperature, can cause a burn, if the skin is exposed to the heat source for a long enough period of time.

### Handling



#### Avoid Magnetic Fields

Keep the computer away from magnets.



#### Avoid Stacking

Do not place heavy objects on top of the computer.



#### Keep Small Objects Away

Do not insert paper clips or other small objects into the computer.



#### Do Not Disassemble the Computer

Do not attempt to disassemble your computer.

### Peripherals

Incorrectly using peripheral devices may lead to a decrease in performance, an increase in temperature and/or damage your computer. For more information on peripheral devices, refer to the Reference Manual.

### Cables

Use of an interface cable longer than 3 m {9.84 feet} is not recommended.

## Precautions (Battery Pack)

- ⊛ Care should be exercised with regard to the following in order to avoid the possibility of overheating, fire or damage.



### Avoid Heat

Do not throw the battery pack into a fire or expose it to excessive heat.



### Keep Articles Away

Do not place the battery pack together with articles such as necklaces or hairpins when carrying or storing.



### Do Not Disassemble

Do not insert sharp objects into the battery pack, expose it to bumps or shocks, deform, disassemble, or modify it.



### Do Not Short

Do not short the positive (+) and negative (-) contacts.



### Avoid Extreme Heat, Cold and Direct Sunlight

Do not charge, use or leave the battery pack for extended periods where it will be exposed to direct sunlight, in a hot place (in an automobile on a sunny day, for example), or in a cold place.



### Do Not Use With Any Other Computer

The battery pack is rechargeable and was intended for the specified computer or charger. Do not use it with a computer other than the one for which it was designed.



### Do Not Put into a Microwave

Do not put the battery pack into a microwave oven or a pressurized chamber.




### Stop Using

Should the battery emit an abnormal odor, become hot to the touch, become discolored, change shape, or become in any way different from normal, remove it from the computer and stop using it.

- ⊙ Do not touch the terminals on the battery pack. The battery pack may no longer function properly if the contacts are dirty or damaged.
- ⊙ Do not expose the battery pack to water, or allow it to become wet.
- ⊙ If the battery pack will not be used for a long period of time (a month or more), charge or discharge (use) the battery pack until the remaining battery level becomes 30% to 40% and store it in a cool, dry place.
- ⊙ This computer prevents overcharging of the battery by recharging only when the remaining power is less than approx. 95% of capacity.
- ⊙ The battery pack is not charged when the computer is first purchased. Be sure to charge it before using it for the first time. When the AC adaptor is connected to the computer, charging begins automatically.
- ⊙ Should the battery leak and the fluid get into your eyes, do not rub your eyes. Immediately flush your eyes with clear water and see a doctor for medical treatment as soon as possible.

# Read Me First

## NOTE

- The battery pack may become warm during recharging or normal use. This is completely normal.
- Recharging will not commence outside of the allowable temperature range (0 °C to 45 °C {32°F to 113 °F})  Reference Manual “Battery Power”. Once the allowable range requirement is satisfied, charging begins automatically. Note that the recharging time varies based on the usage conditions. (Recharging takes longer than usual when the temperature is 10 °C {50 °F} or less.)
- If the temperature is low, the operating time is shortened. Only use the computer within the allowable temperature range.
- The battery pack is a consumable item. If the amount of time the computer can be run off a particular battery pack becomes dramatically shorter and repeated recharging do not restore its performance, the battery pack should be replaced with a new one.
- When a spare battery pack is to be carried in a pocket or bag, it is recommended that it be placed in a plastic bag so that its contacts are protected.
- Always power off the computer when it is not in use. Leaving the computer on when the AC adaptor is not connected will exhaust the remaining battery capacity.



## Saving Data on the Hard Disk

- **Do not expose your computer to shock.**  
Use care when handling your computer, shock may damage your hard disk or make your software applications and data unusable.
  - **Do not power down your computer while software applications are running or HDD indicator (⊞) is on.**  
Properly shut Windows\* down to avoid problems ([Start] - [Shut Down] ).
  - **Save all valuable data to disks.**  
Backing up data to disks will limit damage should trouble occur to your computer or should you inadvertently change or erase data.
  - **Use the security function for all important data.** (☞ Reference Manual "Security Measures")
- \* **Windows/98** : This computer uses Microsoft® Windows® 98 Second Edition operating system.  
**Windows/2000** : This computer uses Microsoft® Windows® 2000 Professional operating system with Service Pack2.

## Hard-Disk-Lock

When the Hard Disk Lock is set to [Enable], it is impossible to read/write data from/to the hard disk when the hard disk is installed in a different computer, since a password is also set for the hard disk. When the hard disk is returned to the original computer, you can read/write data as before. In this case, however, make the settings in the Setup Utility exactly the same as they were before the hard disk was removed. (Note that this Hard Disk Lock does not guarantee the complete protection of data.) (☞ Reference Manual "Security Measures")

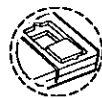
## Saving Data on Disks

- **Do not power down your computer or press the disk drive eject button while the disk indicator is on.**  
Doing so may damage the data on the disk and render the disk useless.
- **Use care when handling disks.**  
To protect the data on your disks or to prevent a disk from becoming stuck in your computer, avoid the following:
  - Sliding the shutter on the disk manually.
  - Exposing the disk to a magnetic field.
  - Storing the disk in locations prone to high temperatures, low pitched noise, dampness, or dust.
  - Applying more than one label on the disk.
- **Confirm the contents of a disk before formatting it.**  
Confirm that no important data is on the disk, because all data on the disk will be erased.
- **Use the write-protect tab.**  
This is a must for preserving important data.  
This prevents your data from being erased or overwritten.



Write Enable

Write-protect Tab



Write Disable

## Computer Viruses

Users are advised to purchase the latest versions of virus protection software and use them regularly.

We recommend you run the software:

- When booting your computer.
- After receiving data.

We recommend that you check data received on disks or from external sources, such as data downloaded from the Internet, e-mail, etc. (For compressed files, uncompress them before running a check).

## System File Checker Windows 98

Microsoft Corporation has announced that, with a computer in which Internet Explorer 5.01 is installed, if the [System File Checker] in [System Information] is executed, the following may occur.

- The message [System File Checker identified that the following file may be corrupted] may appear for normal files.
- In such cases, there is the possibility that the system will become unstable if the file is repaired with the System File Checker.

In this computer, since Internet Explorer 5.01 is the default browser, do not use the System File Checker.

## Usage Environment

### ● Environment

- Place the computer on a flat stable surface.
- In use:      Temperature: 5 °C to 35 °C {41 °F to 95 °F}  
                  Humidity:    30% to 80% RH (No condensation)
- Not in use:    Temperature: -20 °C to 60 °C {-4 °F to 140 °F}  
                  Humidity:    30% to 90% RH (No condensation)

### ● Places not to use your computer

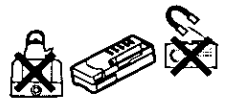
- Such areas may result in damage to the computer.

#### Areas with electronic equipment

These areas may interfere with your display or cause your computer to produce strange sounds.

#### Areas with extremely high/low temperatures

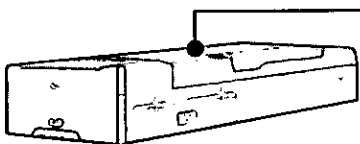
- Do not leave things near the computer that are sensitive to heat. During operation, the computer may become warm.



## Handling

- Ⓢ This computer has been designed so as to minimize shock to the hard disk drive, etc., but no warranty is provided against such trouble. Therefore, as a precision instrument, be extremely careful in the handling.
- Ⓢ Do not drop or hit your computer against solid objects.
- Ⓢ Remove all cables before transporting your computer.
- Ⓢ We recommend preparing a fully charged battery.  
When transporting spare batteries inside a package, briefcase, etc., it is recommended that the batteries be stored in a plastic bag.
- Ⓢ Do not place the computer upright or allow it to tip over. When the computer receives extremely strong shock after falling, the hard disk or floppy disk drive, etc., may become inoperable.
- Ⓢ Always carry your computer with you. Never check it in with luggage. For use of the computer inside an aircraft, we recommend asking the airlines regarding their policy on this issue.
- Ⓢ It is a good idea to make backup copies on disks and carry them with you.

## Maintenance



Wipe with a soft cloth, after applying water or detergent diluted with water to the soft cloth and firmly wringing out excess water.

### CAUTION

- Do not use benzene, thinner, or rubbing alcohol. Doing so may adversely affect the surface, e.g., discoloration. In addition, do not use commercially-available household cleaners and cosmetics, as they may contain components harmful to the surface.
- Do not directly add or spray water or detergent. If liquid enters the inside of the computer, it may cause it to work improperly or be damaged.

# First-time Operation


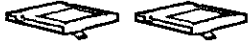



Read the steps below to help you learn what parts are included, and to gain an understanding of some basic computer-related operations.

## CAUTION

Do not use the optional wireless display (CF-VDW07) for the first-time operation.

## 1 Confirm the inclusion of all parts

Make sure the parts shown in the figure have been supplied. If any of these items are missing or is not working properly, contact Panasonic Technical Support.

Splitter Cable ..... 1	Battery Packs ..... 2
	 Model No : CF-VZSU21
USB Cable ..... 1	Product Recovery CD-ROM
	 
Operating Instructions (This book) ..... 1	
Windows® Book ..... 1	

## NOTE

Be sure to prepare the followings.

- Optional port replicator (CF-VEB071)
- Optional floppy disk drive (CF-VF DU03)
- External keyboard (PS/2 type)
- External mouse (PS/2 type)
- External display (a “wired” display with an RGB analog 15-pin interface)

## 2 Write down the Product Key

Write down the number shown on the “Certificate of Authenticity” located on the bottom of the computer in the “Customer’s Record” section on page 2 of this manual.

**3** Read the **LIMITED USE LICENSE AGREEMENT** (page 40)  
Before removing the seal covering the power switch, read the **LIMITED USE LICENSE AGREEMENT**.

**4** Insert the two battery packs



Main Battery Pack Slot



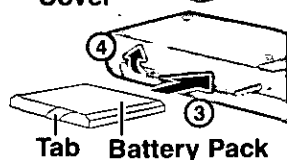
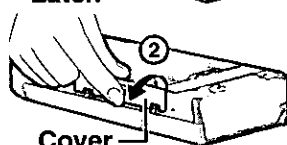
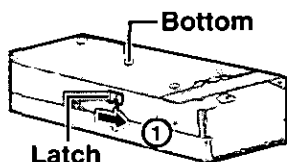
Second Battery Pack Slot

① Turn over the computer, then unlock the cover by sliding the latch to the right.

② Slide the latch down, and then without releasing it, open the cover as illustrated.

③ Firmly attach the battery pack to the connector as illustrated.

④ Close the cover, then lock it by sliding the latch to the left.

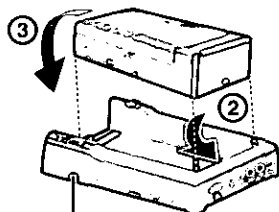
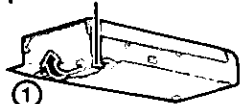


**CAUTION**

- Be sure to insert the battery pack as illustrated.
- Be sure the battery pack is properly connected to the connector.
- For an improperly attached cover, your battery pack may fall out while you are carrying around your computer.
- Be sure the tab does not get caught when closing the cover.

**5** Open the cover of the expansion bus connector, then connect your computer to a port replicator

Expansion Bus Connector



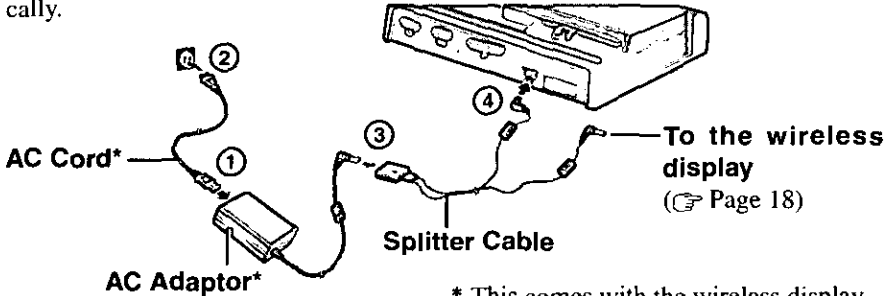
Port Replicator

# First-time Operation

**6** Connect an external display, external keyboard and external mouse to the port replicator (☞ Operating Instruction of the Port Replicator)

**7** Connect the port replicator to a power outlet

When the AC adaptor is connected to the port replicator, charging begins automatically.



## CAUTION

Be sure the AC adaptor is connected until completing Step 11 on page 18.

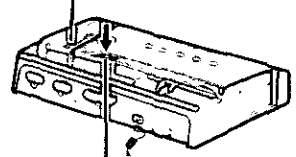
### Handling the AC adaptor


- Do not twist or pull the AC power cord forcefully. Doing so may damage the connections.
- Use only the specified AC adaptor with your computer. Using an AC adaptor other than the one supplied might damage the battery and/or the computer.
- When the DC plug is not connected to the computer, disconnect the AC cord from your AC wall outlet.
- Problems such as sudden voltage drops may arise during periods of thunder and lightning. Since this could adversely affect your computer, an uninterruptible power source (UPS) is highly recommended unless the battery pack is installed.

**8** Turn on your computer

Press the power switch and hold it for approximately one second until the power indicator turns on before releasing it.

Power Indicator 



Power Switch 

## CAUTION

- Do not press the power switch repeatedly.
- Once the computer is powered off, you must wait at least ten seconds before powering it on again.

**NOTE**

Depending on the user settings, if there is no input from a key or an external mouse for a certain interval of time, the power to the external display and hard disk may be turned off. The external display will resume operation when an external mouse is used or a key is pressed.

The power to the external display may be turned off when an application software is being installed. In this case, because it is conceivable that a selection dialog box will be shown, do not press **Space** or **Enter** to attempt to resume from this condition as doing so may trigger a selection, but instead, press a key unrelated to the direct triggering of a selection, like **Ctrl**.

In addition, when the computer is left alone, it automatically may enter the standby\* mode (☞ Reference Manual “Standby/Hibernation Functions”). The computer will resume by pressing the power switch.

\* **Windows 2000**: standby or hibernation

## 9 Setup Windows

**NOTE**

Until the wireless display is connected, use the external display, external keyboard, and external mouse for operations.

**Windows 98****NOTE**

If there is a computer with the same computer name nearby, [The following error occurred while loading protocol number 0.] may be displayed. In this case, press [OK]. To prevent this message from appearing the next time on, change the name for [Computer name] in [Start] - [Settings] - [Control Panel] - [Network] - [Identification] after the completion of the Windows setup procedure.

- ① Select settings for your region and your keyboard layout, then select [Next].  
(for U.S.A.: United States 101)
- ② Enter your name and select [Next].  
The License Agreement will be displayed.

# First-time Operation

- ③ After reading the agreement, select [I accept this agreement] or [I do not accept the agreement], then select [Next].

## NOTE

If [I do not accept the agreement] is selected, the Windows setup will be aborted.

- ④ Select [Finish].
- ⑤ Input the correct date, time and time zone and select [Close]. You can also complete these settings at a later time.

## Windows 2000

## CAUTION

Do not press any key or move the mouse until [Windows 2000 Professional Setup] is displayed.

- ① At the [Welcome to the Windows 2000 Setup Wizard], select [Next].
- ② After reading the agreement, select [I accept this agreement] or [I don't accept this agreement], then select [Next].

## NOTE

If [I don't accept this agreement] is selected, the Windows setup will be aborted.

- ③ Select settings for your region, then select [Next].
- ④ Enter your name and organization and select [Next].
- ⑤ Enter your computer name and administrator password and select [Next].

## CAUTION

Remember this password! If password is forgotten, Windows 2000 cannot be operated.

- ⑥ Input the correct date, time and time zone and select [Next].  
· You can also complete these settings at a later time.
- ⑦ At the [Networking Settings], select [Typical settings], then select [Next].
- ⑧ At the [Workgroup or Computer Domain], select [No, this computer is not on a network, or is on a network without a domain], then select [Next].  
The computer will restart.



- ⑨ At the [Network Identification Wizard], select [Next].
- ⑩ At the [Users of This Computer], select [Users must enter a user name and password to use this computer], then select [Next].
- ⑪ Select [Finish].
- ⑫ Enter your administrator password and select [OK].

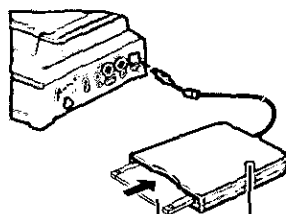
**NOTE**

At the [Getting started with Windows 2000] :

- Press [Exit] to close.
- When selecting [Discover Windows], the computer may ask you to install the Windows 2000 CD. In such case, close the windows, and then specify [c:\winnt\cdimage\discover], then select [OK].

## 10 Create backup disks for reinstallation

- ① Connect the optional floppy disk drive to the port replicator.
- ② Prepare 2HD floppy disks and make sure they are not in the write-protected state.
- ③ Select [Start] - [Programs] - [Panasonic] - [Create Backup Disk].  
Follow the on-screen instructions. Place a label identifying the contents on each disk.



Label on the top surface, and insert the shutter-side headfirst.

**USB Floppy Disk Drive**

**(Windows 2000)**

When [You do not need to make "Backup Disk"] is displayed, there is no need to create a Backup Disk.

- **Name of created backup disk**

FIRSTAID FD (When the display for creating the UPDATE FD is shown, create the disk by following the on-screen instructions.)

**CAUTION**

- Store the disks in a safe place. They will enable you to return your computer to close to the condition at the time of purchase should any problems occur. When creating disks, do not run any other application program.
- When creating disks and [Insufficient files to copy] is displayed, select [OK] and then contact Panasonic Technical Support.
- While the disk drive indicator is on, do not remove the disk, power down your computer or use the standby or hibernation function (☞ Reference "Standby/Hibernation Functions" Manual).
- Be sure to create the Backup Disk.  
If a Backup Disk is not created, it will be impossible to return the computer to its original state. In this case, contact Panasonic Technical Support.

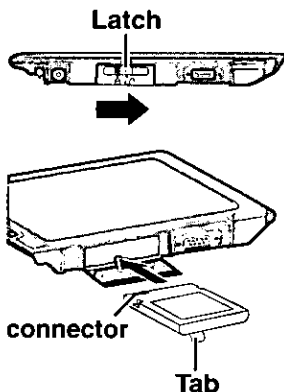
# First-time Operation

## 11 Setup the wireless display

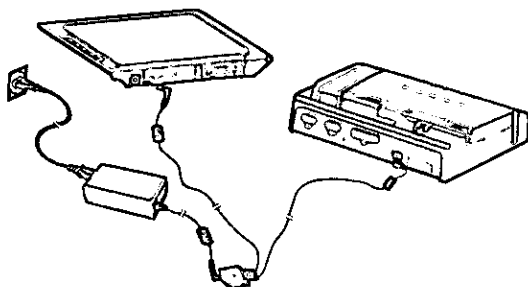
- 1 Slide the latch to the right, and open the cover, then insert the battery pack in the wireless display. After inserting the battery pack, close the cover, then slide the latch to the left. (☞ Operating Instruction of the wireless display)

### CAUTION

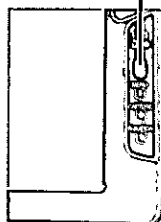
Be sure to insert the battery pack as illustrated.



- 2 Connect the wireless display to a power outlet and turn on the wireless display.



### Power Switch



### NOTE

**<During the setup procedure after reinstalling only>**

Press the Menu button on the wireless display, then select [Option], and then select [Setup].

When [Do you want to change wireless setting?] is displayed, select [Yes].

The following screen is displayed.

### <Wireless display screen>

Select network type.

- ③ Select [AdHoc].

The following screen is displayed.

### <Wireless display screen>

Change setting on host PC to the following value, reboot the host PC, then select "Connect" below.

Wireless LAN card  
 Network Type : AdHoc  
 SSID : cfvdw07-43411  
 Encryption : disable

TCP/IP  
 IP Address : 10.57.148.205  
 NetMask : 255.0.0.0

MeiWDS  
 Password : wdsp


This screen is a sample.

### CAUTION

Do not select [Connect] until step ⑩ is completed.

### NOTE

The wireless display will turn off automatically after 10 minutes have elapsed. In this case, start the procedure from step ②.

- ④ Select  on the taskbar of the external display, then select [Configuration].  
 The following screen is displayed.

### <External display screen>

Wireless LAN Configuration Utility

LAN Type | Configuration | Encryption | About

Mode: 802.11 AdHoc

SSID: cfvdw07-43411

Tr. Rate: Fully Automatic

PS Mode: Enabled

Channel: 11

Select [802.11 AdHoc].

### CAUTION

Do not select [AdHoc].

Match the settings of the computer with the information displayed on <Wireless display screen> of the step ③.

### CAUTION

<For Canada>

You can select only [11] for [Channel].

This screen is a sample.

- ⑤ Select [Apply Changes], then select [OK].

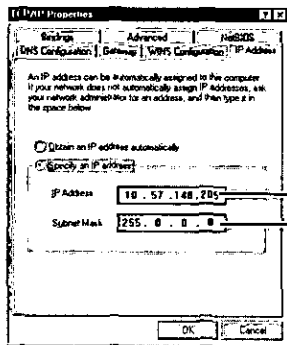
# First-time Operation

## ⑥ (Windows98)

Select [Start] - [Settings] - [Control Panel] - [Network] - [TCP/IP→PRISM2 IEEE 802.11 PC CARD Adapter] - [Properties] - [IP Address].

The following screen is displayed.

### <External display screen>



Add the check mark for [Specify an IP address], match the settings of the computer with the information displayed on <Wireless display screen> of the step ③.

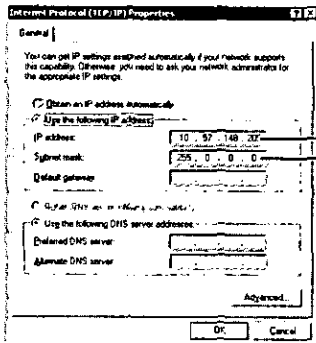
This screen is a sample.

## (Windows2000)

Select [Start] - [Settings] - [Control Panel] - [Network and Dial-up Connections] - [Local Area Connection 2] - [Properties] - [Internet Protocol (TCP/IP)] - [Properties].

The following screen is displayed.

### <External display screen>




Add the check mark for [Use the following IP address], match the settings of the computer with the information displayed on <Wireless display screen> of the step ③.

This screen is a sample.

⑦ Select [OK], then select [OK].

## ⑧ (Windows98)

Select [Yes]. The computer will restart.

- ⑨ Select  on the taskbar, select [Password]:  
The following screen is displayed.

**<External display screen>**




- ⑩ Input [wdsp], then select [OK].
- ⑪ Select [Connect] on <Wireless display screen> of the step ③.  
The wireless display can be used.

**NOTE**

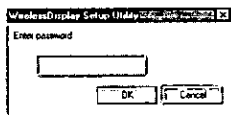
Do not remove the port replicator until step ⑮ is completed.

- ⑫ **(Windows98)**  
Power off your computer.
- ⑬ **(Windows98)**  
Remove the external mouse, then turn on your computer again.
- ⑭ **(Windows98)**  
When [Windows did not detect a mouse attached to the computer] is displayed, add the check mark for [Do not show this message in the future] through the external keyboard. (Press **(Alt) + (D)**, press **(Tab)**, then press **(Enter)**.)
- ⑮ **(Windows98)**  
Power off your computer through the keyboard. (☞ page 27)

**<When using except default settings with the wireless display>**

- ⑯ Select  on the taskbar, select [Run Setup Utility].  
The following screen is displayed.

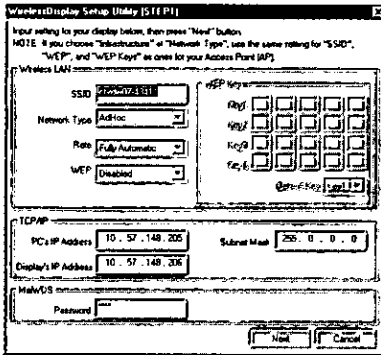
**<External display screen>**



# First-time Operation

- ⑰ Input [wdsp], then select [OK].  
The following screen is displayed.

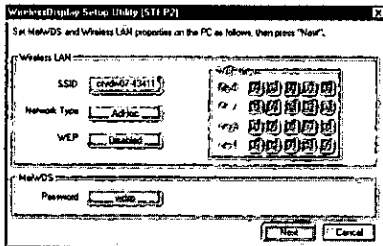
## <Step 1>




This screen is a sample.

- ⑱ Set the necessary items, select [Next].  
The following screen is displayed.

## <Step 2>




This screen is a sample.

- ⑲ Select  on the taskbar, set the parameters in [Configuration] or [Encryption].

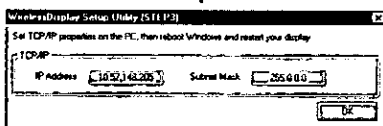
### NOTE

After this, if [Connection Timeout] is displayed, select [OK].

- ⑳ Select  on the taskbar, select [Password].  
Set the password by following <Step 2> screen.

- ㉑ Select [Next] at the <Step 2> screen.  
The following screen is displayed.

## <Step 3>



This screen is a sample.

**22 (Windows 98)**

Select [Start] - [Settings] - [Control Panel] - [Network] - [TCP/IP→PRISM2 IEEE 802.11 PC CARD Adapter] - [Properties] - [IP Address], set the parameters by following the above **<Step 3>** screen, then select [OK].

**(Windows 2000)**

Select [Start] - [Settings] - [Control Panel] - [Network and Dial-up Connections] - [Local Area Connection 2] - [Properties] - [Internet Protocol (TCP/IP)] - [Properties], set the parameters by following the above **<Step 3>** screen, then select [OK].

**23 Restart the computer.****NOTE****(Windows 98)**

Be sure to prepare the following.

- Optional port replicator (CF-VEB071)
- External keyboard
- External display

When using the files in the following folders available on the retail version of the Windows CD-ROM, it is necessary to run a separate file decompression program.

```
\tsclient
\tools
```

To uncompress the file, it is necessary to have approximately 80 MB of free disk space available on the hard disk.

To use the CD-ROM drive in MS-DOS mode, perform the operation below after modifying config.sys and autoexec.bat (☞ Reference Manual "CD-ROM Drive").

File decompression method:

- ① Turn on your computer.
- ② When [Press <F2> to enter SETUP] is displayed, immediately press **(Ctrl)** (until the menu is displayed).
- ③ Select [Command prompt only].
- ④ Insert the Product Recovery CD-ROM.
- ⑤ At the prompt, input the following:

```
L:\en\addfile (Enter)
```

Follow the message on the screen.

After this program is executed, the contents of the above folders will be decompressed to the c:\util\win98add folder.

**(Windows 2000)**

When a new device has been installed or a new Windows Component has been added in [Start] - [Settings] - [Control Panel] - [Add/Remove Programs], [Insert Disk] may appear. Select [OK] and specify [c:\winnt\cdimage] in place of [c:\sysprep\i386] or [D:], then select [OK].

e.g. [c:\winnt\cdimage\i386] in place of [D:\i386]

# Starting Up/Shutting Down

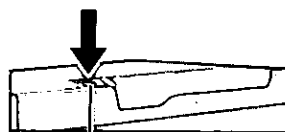
## Starting Up

### CAUTION

Do not maximize the MS-DOS screen. Once maximized, the connection with the wireless display is interrupted. The connection cannot be re-established and the computer no longer operates. In such cases, the computer must be powered off. Data may be lost.

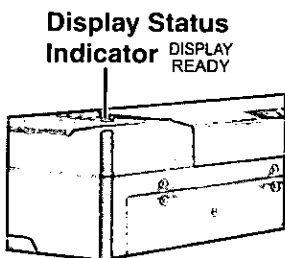
### 1 Turn on your computer

Press the power switch and hold it for approximately one second until the power indicator turns on before releasing it.



Power Switch 

### 2 After confirming the display status indicator lit, turn on the wireless display Operating Instructions of the wireless display)



### CAUTION

- After confirming that the power indicator has turned on, avoid the following until Windows has completed loading.
  - Connecting or disconnecting the AC adaptor.
  - Touching the power switch.
  - Performing any keyboard or external mouse operations.
- Once the computer is powered off, you must wait at least ten seconds before powering it on again.
- When the computer is turned on in a low-temperature environment, start-up may take longer than usual, in order to ensure stable operation of the computer's systems.
- When the CPU temperature rises, the computer may not power on to prevent the CPU from overheating. Should this happen, allow the computer to cool down then switch the power on again.  
If the computer still does not power on, contact Panasonic Technical Support.

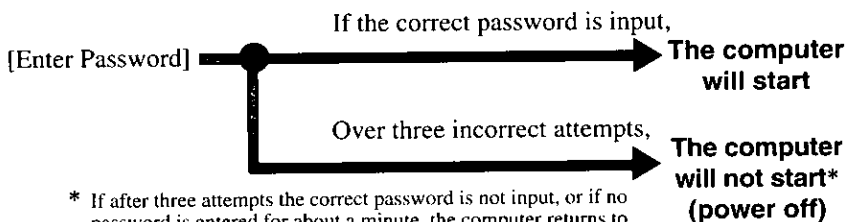


- <Only when the port replicator (external display, external keyboard) is connected>

If [Enter Password] is displayed,

you must first enter your password (☞ Reference Manual “Security Measures”)

Upon entering your password and pressing **Enter**



\* If after three attempts the correct password is not input, or if no password is entered for about a minute, the computer returns to the condition just before the attempt was made to start up the computer.

- When an application or file that was previously displayed appears on your screen,

the standby or hibernation mode (☞ Reference Manual “Standby/Hibernation Functions”) has been set.

### 3 **Windows2000**

#### Input your password

Wait for 10 seconds after confirming that the HDD access has been completed, input the user name and password, then select [OK]. Until the correct user name and password are entered, the computer will not operate.

# Starting Up/Shutting Down

## 4 Select your application

You are able to start working on your computer.

### NOTE

- The power to the wireless display may be turned off while Windows is setting up or even when an application software is being installed.


#### <When the wireless display turned off>


- If the power indicator lights, the wireless display will resume operation when the touchscreen is used.
- If the power indicator does not light, the wireless display will resume operation when the power switch is pressed.

#### <When the external display turned off>

The external display will resume operation when the external keyboard or mouse is used.

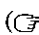
- According to the setting of the computer, when the computer is left alone, it automatically may enter the standby\*<sup>1</sup> mode (☞ Reference Manual “Standby/Hibernation Functions”). The computer will resume by pressing the power switch.
- [System devices] in [Start] - [Settings] - [Control Panel] - [System]\*<sup>2</sup> - [Device Manager] may contain a device or devices bearing an exclamation mark or question mark. This does not indicate a malfunction. Such a mark (exclamation mark or question mark) will not be displayed if the operating environment of the device showing the mark is corrected, by for instance installing the driver of the device.

\*<sup>1</sup>  : standby or hibernation

\*<sup>2</sup>  : [System] - [Hardware]

# Shutting Down (power off your computer)

This procedure is shutting down without using the standby or hibernation function.




 Reference Manual “Standby/Hibernation Functions”

## 1 Display the shut down screen

After saving important data and closing each application, select [Shut Down] from the [Start] menu.

### NOTE

From the keyboard,

You may select to press  or **Ctrl** + **Esc**, then select the menu with  or .

## 2 Confirm shut down

Select [OK] after selecting [Shut down].

### ● Restarting your computer (without shutting down)

Select [OK] after selecting [Restart].

### CAUTION

#### Windows98

Do not select [Start] - [Shut down] - [Restart in MS-DOS mode].

If this occurs, the wireless display no longer displays. In such cases, turn off the computer and turn on the computer again.


## 3 When [Windows is shutting down] is displayed, select [OK]

The wireless display and your computer will power off automatically.

Confirm the power indicator of the computer turns off.

### NOTE

To quickly resume computer operation after shutting down,

The standby or hibernation function is available.  Reference Manual “Standby/Hibernation Functions”

# Reference Manual

The Reference Manual can be accessed on your computer. When a printer is connected, the Reference Manual can also be printed.

This manual explains functions for you to make greater use of the computer, such as how to add peripheral devices, how the Setup Utility works and other useful information.

## Run the Reference Manual

- 1 Turn your computer on
- 2 Select [Reference Manual] in [Start] - [Programs] - [Panasonic] - [On-Line Manuals]

When the Reference Manual is started up for the first time, the License Agreement will be displayed. After reading the agreement, select [Accept] to access the Reference Manual.

### NOTE

#### Windows98

- When the Reference Manual is run for the first time, an error message may appear if the Reference Manual is run using a method that differs from the above explanation. If an error message appears, select [OK].

#### Windows2000

- If the Reference Manual is opened using a procedure that differs from the above explanation (e.g., double-clicking the manual from Windows Explorer, etc.), there are cases Acrobat Reader will no longer start up. In such cases, restart the computer and then open the Reference Manual with the above procedure.

**Display the page**

Go forward or backward a page, or to the beginning or end of a document.

**Cancel or correct an operation**

**Change the display size**

**Perform a "Find" operation**

**Exit**

**Zoom-in**

**Hand tool**

To move around the current page.

**Table of Content (Items)**

By clicking an item, the corresponding page will be displayed at 100%.

**Movable splitter bar**

This bar can be dragged, for example, to the right to enlarge the display of the Table of Contents.

**Change the display size**

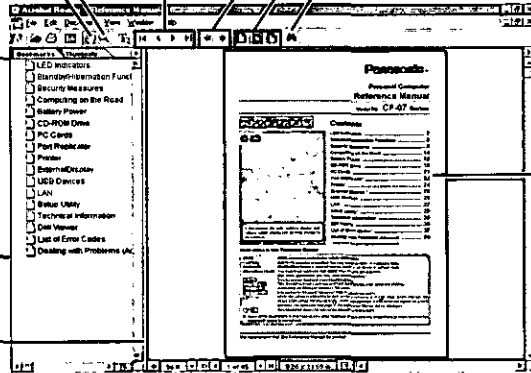
You can choose to magnify/de-magnify the display.

(The display may be changed without notification.)

**Page indicator**

A desired page can be displayed by inputting the page number after clicking here.

**Display of the manual**



**NOTE**

- Illustrations may be difficult to view depending on the magnification. If this is the case, we recommend that the display be magnified.
- When the taskbar is hidden at the bottom portion of Acrobat Reader, set the maximum display window size.
- If a printer is connected, we recommend printing pages. The illustrations and display samples may not print with a high quality.

# List of Error Codes <Only when the port replicator is connected>

The following is a list of the messages that BIOS can display. Most of them occur during POST. Some of them display information about a hardware device, e.g., the amount of memory installed. Others may indicate a problem with a device, such as the way it has been configured. Following the list are explanations of the messages and remedies for reported problems.

If your system displays one of except the messages marked below with an asterisk (\*), write down the message and contact Panasonic Technical Support. If your system fails after you make changes in the Setup menus, reset the computer, enter Setup and install Setup defaults or correct the error.

## **0200 Failure Fixed Disk**

Fixed disk in not working or not configured properly. Check to see if fixed disk is attached properly. Run Setup. Find out if the fixed-disk type is correctly identified.

## **0210 Stuck key**

Stuck key on keyboard.

## **0211 Keyboard error**

Keyboard not working.

## **0212 Keyboard Controller Failed**

Keyboard controller failed test. May require replacing keyboard controller.

## **0213 Keyboard locked - Unlock key switch**

Unlock the system to proceed.

## **0230 System RAM Failed at offset : *nnnn***

System RAM failed at offset *nnnn* of in the 64k block at which the error was detected.

## **0231 Shadow RAM Failed at offset : *nnnn***

Shadow RAM failed at offset *nnnn* of the 64k block at which the error was detected.

## **0232 Extended RAM Failed at offset : *nnnn***

Extended memory not working or not configured properly at offset *nnnn*.

## **0250 System battery is dead - Replace and run SETUP**

The CMOS clock battery indicator shows the battery is dead. Replace the battery and run Setup to reconfigure the system.

## **\*0251 System CMOS checksum bad - Default configuration used**

System CMOS has been corrupted or modified incorrectly, perhaps by an application program that changes data stored in CMOS. The BIOS installed Default SETUP Values. If you do not want these values, enter Setup and enter your own values. If the error persists, check the system battery or contact Panasonic Technical Support.

## **0260 System timer error**

The timer test failed. Requires repair of system board.

## **0270 Real time clock error**

Real-time clock fails BIOS test. May require board repair.

## **\*0280 Previous boot incomplete - Default configuration used**

Previous POST did not complete successfully. POST loads default values and offers to run Setup. If the failure was caused by incorrect values and they are not corrected, the next boot will likely fail. On systems with control of wait states, improper Setup settings can also terminate POST and cause this error on the next boot. Run Setup and verify that the wait-state configuration is correct. This error is cleared the next time the system is booted.

## **0281 Memory Size found by POST differed from EISA CMOS**

Memory size found by POST differed from EISA CMOS.

**02D0: System cache error - Cache disabled**

Contact Panasonic Technical Support.

**02F0: CPU ID:**

CPU socket number for Multi-Processor error.

**02F4: EISA CMOS not writable**

ServerBIOS2 test error: Cannot write to EISA CMOS.

**02F5: DMA Test Failed**

ServerBIOS2 test error: Cannot write to extended DMA (Direct Memory Access) registers.

**02F6: Software NMI Failed**

ServerBIOS2 test error: Cannot generate software NMI (Non-Maskable Interrupt).

**02F7: Fail - Safe Timer NMI Failed**

ServerBIOS2 test error: Fail-Safe Timer takes too long.

***device* address Conflict**

Address conflict for specified *device*.

**Allocation Error for: *device***

Run ISA or EISA Configuration Utility to resolve resource conflict for the specified *device*.

**Failing Bits : *nnnn***

The hex number *nnnn* is a map of the bits at the RAM address which failed the memory test. Each 1 (one) in the map indicates a failed bit. See error 230,231 or 232 for offset address of the failure in System, Extended or Shadow memory.

**Invalid System Configuration Data**

Problem with NVRAM (CMOS) data.

**I/O device IRQ conflict**

I/O device IRQ conflict error.

**Operating System not found**

Operating system cannot be located on either drive A: or drive C:. Enter Setup and see if fixed disk and drive A: are properly identified.

**Parity Check 1 *nnnn***

Parity error found in the system bus. BIOS attempts to locate the address and display it on the screen. If it cannot locate the address, it displays ????. Parity is a method for checking errors in binary data. A parity error indicates that some data has been corrupted.

**Parity Check 2 *nnnn***

Parity error found in the I/O bus. BIOS attempts to locate the address and display it on the screen. If it cannot locate the address, it displays ????.

**Press <F1> to resume, <F2> to Setup**

Displayed after any recoverable error message. Press <F1> to start the boot process or <F2> to enter a Setup and change the settings. Write down and follow the information shown on the screen.

# Dealing with Problems (Summary)

When a problem occurs, power off the wireless display, then connect the optional port replicator (CF-VEB071), external keyboard and external display and refer to this page. The “Reference Manual” also contains detailed information. If a problem appears to be related to a software application, read the software related manual. If you still cannot troubleshoot the problem, contact Panasonic Technical Support.

## ● Starting Up

<b>The power indicator or battery indicator is not lit</b>	<ul style="list-style-type: none"><li>● Check the cable connection for the AC adaptor.</li><li>● Check to see if a fully charged battery is properly installed.</li><li>● Remove the battery pack and disconnect the AC adaptor, then connect them again.</li></ul>
<b>[Enter Password] is displayed</b>	Input your password. If you have forgotten it, contact Panasonic Technical Support.
<b>POST Startup Error(s) is displayed</b>	☞ page 30
<b>Windows startup, or an operation is extremely slow</b>	Press <b>(F9)</b> in the Setup Utility (☞ <small>Reference Manual</small> “Setup Utility”). This will restore the Setup Utility’s settings to their default values (except the password settings). Then, the Setup Utility must be run once again for you to input the appropriate operating environment settings. (The processing speed depends on the application software used, so this operation may not cause the processing speed to increase.)
<b>The date and time are incorrect</b>	<ul style="list-style-type: none"><li>● You can set the date and time through [Date/Time] in [Start] - [Settings] - [Control Panel].</li><li>● When the computer is connected to a Local Area Network (LAN), confirm the date and time of the server.</li><li>● If you continue to experience problems, the internal battery maintaining the clock may need to be replaced. Contact Panasonic Technical Support.</li><li>● This computer will not correctly recognize the date and time starting from the year 2100 A.D.</li></ul>



## ● Starting Up

<p>When the previous item is not the cause</p>	<ul style="list-style-type: none"> <li>● Press <b>(F9)</b> in the Setup Utility (☞ <small>Reference Manual</small> “Setup Utility”). This will restore the Setup Utility’s settings to their default values (except the password settings).</li> <li>● Try removing all peripheral devices. <b>(Windows98)</b></li> <li>● Run SCANDISK to check the hard disk.</li> <li>● At start-up, press <b>(Ctrl)</b> to operate the computer in the Safe mode. <b>(Windows2000)</b></li> <li>● Click [Local Disk(C:)] in [My Computer] with the right button, select [Properties], then select [Tools] - [Check Now].</li> <li>● At start-up, press <b>(F8)</b> to operate the computer in the Safe mode.</li> </ul>
<p>The cursor cannot be controlled</p>	<p>Restart the computer by using the keyboard (e.g., <b>(Fn)</b> or <b>(Ctrl) + (Esc)</b>).</p> <p>When the port replicator is not connected, turn off the computer.</p>
<p>The password is not required when resuming from the standby or hibernation mode</p>	<ul style="list-style-type: none"> <li>● Use the Windows password as the following. Select [Start] - [Settings] - [Control Panel] - [Power Management]* - [Advanced], then add the check mark for [Prompt for password when computer goes off standby]. * <b>(Windows2000)</b> : [Power Options]</li> <li>● Press the Menu button of the wireless display, then set the password (☞ Operating Instructions of the wireless display).</li> </ul>
<p>The DISPLAY READY indicator does not go on even when the HDD indicator goes off</p>	<p>A problem possibly occurred during startup. After powering off the computer, connect the port replicator and restart the computer.</p>
<p><b>(Windows98)</b> When starting up in the MS-DOS mode, the USB floppy disk drive can not be used</p>	<p>After powering off the computer, connect the USB floppy disk drive and restart the computer.</p>
<p><b>(Windows2000)</b> The password of the administrator was forgotten</p>	<p>After reinstalling, setup Windows, then set the password again.</p>

# Dealing with Problems (Summary)


## ● Battery Indicator

<b>The red indicator lights.</b> <b>Repeated beeping sound while the computer is in use.</b>	The battery level is low. Save your data and power off your computer. After connecting the AC adaptor or replacing the battery pack with a fully charged one, turn your computer on.
<b>The red indicator blinks</b>	<ul style="list-style-type: none"><li>● The battery pack or recharging function may be defective. Quickly remove the battery pack and disconnect the AC adaptor, then connect them again.</li><li>● If the problem persists, contact Panasonic Technical Support.</li></ul>
<b>The orange indicator blinks</b>	Unable to charge because of an improper temperature range. (☞ page 8)
<b>The green indicator blinks</b>	Battery is discharging to prescribed charging level in high temperature mode.

## ● Reference Manual

<b>The Reference Manual is not displayed</b>	Is Acrobat Reader installed? If Acrobat Reader is not installed, run [c:\util\reader\setup.exe]* in [Start] - [Run] to reinstall the program. When installing the program, do not change the installation destination folder. If the destination folder is changed, the Reference Manual cannot be opened from the [Start] menu. * (Windows2000): [c:\util\reader\ar405.exe]
(Windows2000) <b>A PDF file cannot be opened</b>	If an attempt is made to open a PDF file from [Windows Explorer], etc., by clicking on the file, there are cases Acrobat Reader will no longer start up. In such cases, restart the computer. To open a PDF file, run Acrobat Reader first and then specify the name of the file to open in [File] - [Open]. For the Reference Manual, this procedure does not need to be followed. The Reference Manual can be opened by selecting [Reference Manual] in [Start] - [Programs] - [Panasonic] - [On-Line Manuals].

## ● Wireless Display (except below ☞ Operating Instructions of the wireless display)

<b>Wireless connection is interrupted</b>	Select  on the taskbar of the external display, then select [Configuration], and then set [Tx Rate] to [Auto 1 or 2 Mb]. ☞ page 19
---	--

## ● External Display

<p><b>No display after powering on</b></p>	<p>When there is no display to an external display,</p> <ul style="list-style-type: none"> <li>• Check your cable connection to the external display.</li> <li>• Confirm your display is powered on.</li> <li>• Check the settings for your external display.</li> </ul>
<p><b>The power has not been turned off, but after a certain period of time, there is no display</b></p>	<ul style="list-style-type: none"> <li>④ Has the computer been set to the power-saving mode? To resume operation of your computer from the condition the power of the display is off (for energy conservation purposes), use the touch screen or an external keyboard or mouse.</li> <li>⑤ To save power, your computer may have automatically entered the standby or hibernation mode. (Reference Manual "Computing On the Road") Press the power switch.</li> </ul>
<p><b>An afterimage appears</b></p>	<p>If an image is displayed for a prolonged period of time, an afterimage may appear. This is not a malfunction. Set the screen saver.</p>
<p><b>The external display no longer displays properly</b></p>	<p>When an external display not compatible with the power saving mode is used with the computer, the external display may no longer display properly when the computer enters the condition the power of the display is off (for energy conservation purposes). In such cases, turn off the power to the external display.</p>
<p><b>The screen becomes disordered</b></p>	<p>Changing the number of colors of the display may affect the screen. Restart the computer.</p>

## ● Application Software

<p><b>Computer hangs</b></p>	<p>After shutting down by pressing the power switch for more than four seconds, press the power switch to power on and open the application again.</p> <p>If the program no longer works normally, go to [Start] - [Settings] - [Control Panel] - [Add/Remove Programs] to delete the program. Then reinstall the program.</p>
<p><b>Unable to install</b></p>	<p>Install the software after powering off the computer and the wireless display and then connecting the port replicator, optional USB floppy disk drive, external keyboard and external display.</p>

## ● Shutting down

<p><b>Unable to shut down Windows</b></p>	<p>Do not shut down Windows during music playback.</p>
---	--

# Reinstalling Software

## Before Reinstallation

### ● Preparing

- You will need the followings:
  - Product Recovery CD-ROM
  - Optional port replicator (CF-VEB071)
  - External keyboard
  - External mouse
  - External display
  - If it was necessary to create BACKUP DISKS (“Create backup disks for reinstallation” on page 17), you will need the BACKUP DISKS (e.g., FIRTAID FD), the USB floppy disk drive (CF-VFDU03).
- The operation of reinstallation takes about 1 hour (Windows 98) or 20 minutes (Windows 2000).

### ● Important

- Save all important data. If reinstallation is carried out, all data existing prior to the installation will be lost. The reinstallation will return the computer to close to the conditions at time of purchase.
- Before the reinstallation procedure, remove unnecessary peripherals.
- Be sure the AC adaptor is connected until the reinstallation procedure is completed.

## Reinstalling

### CAUTION

If data on your hard disk is compressed, the data should be uncompressed.

- 1 Power off the computer and connect the port replicator, external display, external keyboard and external mouse and USB floppy disk drive, then turn the computer on.
- 2 When the message [Press <F2> to enter SETUP] is displayed, press **(F2)** and then run the Setup Utility.  
If the password has been set, enter the Supervisor Password.
- 3 Write down all of the contents of the Setup Utility and then press **(F9)**.  
At the confirmation message, select [Yes] and press **(Enter)**.
- 4 Select [Boot] menu, press **(↑)** / **(↓)** and **(F5)** / **(F6)** until [CD Drive] is at the top of the [Boot] menu and [Floppy Disk] is the next position.
- 5 Set the Product Recovery CD-ROM\* in the CD-ROM drive, and set the FIRTAID FD in the floppy disk drive.

\* **(Windows2000)** : Product Recovery CD-ROM1

6 Press **(F10)**.

At the confirmation message, select [Yes] and press **(Enter)**. The computer will reboot, and the License Agreement screen should appear. Select [1. Yes, I agree to the provisions above and wish to continue!].

7 This screen should appear.

**(Windows98)**

Select a number  
-----  
1. Restore the whole HDD to factory default  
2. Restore the drive C to factory default  
3. End  
-----

**(Windows2000)**

Select a number  
-----  
1. Restore the whole HDD to factory default  
2. Restore Windows 2000 to the first partition  
3. End  
-----

8 Make a selection from the menu.

**To restore all contents of the hard disk to factory default, including the partition setting(s):**

Select [1. Restore the whole HDD to factory default].

**(Windows98)**

**To restore the hard disk (C drive) to factory default, excluding the partition setting(s):**

Select [2. Restore the drive C to factory default].

**(Windows2000)**

**To reinstall Windows Windows 2000 to the first partition to factory default:**

Select [2. Restore Windows 2000 to the first partition].

**In such cases, the initial partition size must be 2 GB or more of the hard disk size. Reinstallation cannot be performed with a small partition size.**

**NOTE**

If [The program has detected an error 110 on the partition starting at sector xxxxxxxx on disk1.] is displayed, select [Yes].

(To next page)

# Reinstalling Software

- 9 At the confirmation message , press **(Y)** .

The computer will reboot, and the operation of reinstallation for the hard disk starts automatically.

## **(Windows2000)**

When [Insert media 2] is displayed, insert Product Recovery CD-ROM 2 into the CD-ROM drive and immediately select [OK].

### **NOTE**

If [OK] is not immediately selected:

[The media does not contain the correct file] may be displayed. In such cases, [Insert media 2...] is displayed again when [OK] is selected. Confirm that Product Recovery CD-ROM 2 has been inserted by opening the tray of the CD-ROM drive, then close the tray and immediately select [OK].

- 10 After the reinstallation procedure completes, the following message will appear on the display. Remove the Product Recovery CD-ROM\* and FIRTAID FD, then restart the computer by pressing **(Ctrl) + (Alt) + (Del)** .  
(When using the USB floppy disk drive, disconnect it.)

\* **(Windows2000)** : Product Recovery CD-ROM2

## **(Windows98)**

All data on the whole HDD has been restored to the factory default.  
After removing floppy disk and the Product Recovery CD-ROM,  
restart the computer and set up Windows again.

## **(Windows2000)**

Windows2000 install wizard will start after reboot.  
Restore process will execute more after Windows2000 install wizard.  
Restart the computer after removing Product Recovery CD-ROM.

**11** When the message [Press <F2> to enter SETUP] is displayed, press **F2** and then run the Setup Utility.

If the password has been set, enter the Supervisor Password.

**12** Press **F9**.

At the confirmation message, select [Yes] and press **Enter**. (The Setup Utility settings will return to their default values. Even the security settings with the exception of the password(s) will return to their default values.)

Change the settings where necessary.

**13** Press **F10**.

At the confirmation message, select [Yes] and press **Enter**.

**14** Perform the setup procedure for Windows by following the instructions on the screen.

**Windows98** ☞ page 15

**Windows2000** ☞ page 16

#### NOTE

- When an UPDATE FD is to be created, follow the steps in the readme.txt on the disk. (☞ page 17)
- When [Operating System not found] is displayed, press **Ctrl** + **Alt** + **Del** and perform the operations from step **11** to step **13**.
- If you fail to press **F2** in step **11**, restart the computer and perform the operations from step **11** to step **13** after finishing Windows setup procedure.

# LIMITED USE LICENSE AGREEMENT

THE SOFTWARE PROGRAM(S) ("PROGRAMS") FURNISHED WITH THIS PANASONIC® PRODUCT ("PRODUCT") ARE LICENSED ONLY TO THE END-USER ("YOU"), AND MAY BE USED BY YOU ONLY IN ACCORDANCE WITH THE LICENSE TERMS DESCRIBED BELOW. YOUR USE OF THE PROGRAMS SHALL BE CONCLUSIVELY DEEMED TO CONSTITUTE YOUR ACCEPTANCE OF THE TERMS OF THIS LICENSE.

Matsushita Electric Industrial Co., Ltd. ("MEI") has developed or otherwise obtained the Programs and hereby licenses their use to you. You assume sole responsibility for the selection of the Product (including the associated Programs) to achieve your intended results, and for the installation, use and results obtained therefrom.

## LICENSE

- A. MEI hereby grants you a personal, non-transferable and non-exclusive right and license to use the Programs in accordance with the terms and conditions stated in this Agreement. You acknowledge that you are receiving only a LIMITED LICENSE TO USE the Programs and related documentation and that you shall obtain no title, ownership nor any other rights in or to the Programs and related documentation nor in or to the algorithms, concepts, designs and ideas represented by or incorporated in the Programs and related documentation, all of which title, ownership and rights shall remain with MEI or its suppliers.
- B. You may use the Programs only on the single Product which was accompanied by the Programs.
- C. You and your employees and agents are required to protect the confidentiality of the Programs. You may not distribute or otherwise make the Programs or related documentation available to any third party, by time-sharing or otherwise, without the prior written consent of MEI.
- D. You may not copy or reproduce, or permit to be copied or reproduced, the Programs or related documentation for any purpose, except that you may make one (1) copy of the Programs for backup purposes only in support of your use of the Programs on the single Product which was accompanied by the Programs. You shall not modify, or attempt to modify, the Programs.
- E. You may transfer the Programs and license them to another party only in connection with your transfer of the single Product which was accompanied by the Programs to such other party. At the time of such a transfer, you must also transfer all copies, whether in printed or machine readable form, of every Program, and the related documentation, to the same party or destroy any such copies not so transferred.



- 
- F. You may not remove any copyright, trademark or other notice or product identification from the Programs and you must reproduce and include any such notice or product identification on any copy of any Program.

YOU MAY NOT REVERSE ASSEMBLE, REVERSE COMPILE, OR MECHANICALLY OR ELECTRONICALLY TRACE THE PROGRAMS, OR ANY COPY THEREOF, IN WHOLE OR IN PART.

YOU MAY NOT USE, COPY, MODIFY, ALTER, OR TRANSFER THE PROGRAMS OR ANY COPY THEREOF, IN WHOLE OR IN PART, EXCEPT AS EXPRESSLY PROVIDED IN THE LICENSE.

IF YOU TRANSFER POSSESSION OF ANY COPY OF ANY PROGRAM TO ANOTHER PARTY, EXCEPT AS PERMITTED IN PARAGRAPH E ABOVE, YOUR LICENSE IS AUTOMATICALLY TERMINATED.

### **TERM**

This license is effective only for so long as you own or lease the Product, unless earlier terminated. You may terminate this license at any time by destroying, at your expense, the Programs and related documentation together with all copies thereof in any form. This license will also terminate effective immediately upon occurrence of the conditions therefore set forth elsewhere in this Agreement, or if you fail to comply with any term or condition contained herein. Upon any such termination, you agree to destroy, at your expense, the Programs and related documentation together with all copies thereof in any form.

YOU ACKNOWLEDGE THAT YOU HAVE READ THIS AGREEMENT, UNDERSTAND IT AND AGREE TO BE BOUND BY ITS TERMS AND CONDITIONS. YOU FURTHER AGREE THAT IT IS THE COMPLETE AND EXCLUSIVE STATEMENT OF THE AGREEMENT BETWEEN US, WHICH SUPERSEDES ANY PROPOSAL OR PRIOR AGREEMENT, ORAL OR WRITTEN, AND ANY OTHER COMMUNICATIONS BETWEEN US, RELATING TO THE SUBJECT MATTER OF THIS AGREEMENT.

# Contrat de licence d'usage limité

Le(s) logiciel(s) (les "Logiciels") fournis avec ce produit Panasonic® (le "Produit") sont exclusivement concédés en licence à l'utilisateur ultime ("vous"), et ils ne peuvent être utilisés que conformément aux clauses contractuelles ci-dessous. En utilisant les logiciels, vous vous engagez de manière définitive à respecter les termes, clauses et conditions des présentes.

Matsushita Electric Industrial Co., Ltd. ("MEI") a mis au point ou obtenu les Logiciels et vous en concède l'utilisation par les présentes. Vous assumez l'entière responsabilité du choix de ce Produit (y compris des Logiciels associés) pour obtenir les résultats escomptés, ainsi que de l'installation, de l'utilisation et des résultats obtenus.

## Licence

- A. MEI vous octroie par les présentes le droit et la licence personnels, non cessibles et non exclusifs d'utiliser les Logiciels conformément aux termes, clauses et conditions de ce Contrat. Vous reconnaissez ne recevoir qu'un droit limité d'utiliser les Logiciels et la documentation les accompagnant et vous vous engagez à n'obtenir aucun droit de titre, propriété ni aucun autre droit vis-à-vis des Logiciels et de la documentation les accompagnant ni vis-à-vis des algorithmes, concepts, dessins, configurations et idées représentés par ou incorporés dans les Logiciels et la documentation les accompagnant, dont les titres, propriété et droits resteront tous à MEI ou à leurs propriétaires.
- B. Vous ne pouvez utiliser les Logiciels que sur le Produit unique qui est accompagné par les Logiciels.
- C. Vous et vos employés ou agents êtes requis de protéger la confidentialité des Logiciels. Vous ne pouvez ni distribuer ni mettre les Logiciels et la documentation les accompagnant à la disposition d'un tiers, par partage de temps ou de quelque autre manière que ce soit, sans l'autorisation écrite préalable de MEI.
- D. Vous ne pouvez ni copier ni reproduire ni permettre la copie ni la reproduction des Logiciels ni de la documentation les accompagnant pour quelque fin que ce soit, à l'exception d'une (1) copie des Logiciels à des fins de sauvegarde uniquement pour soutenir votre utilisation des Logiciels sur le Produit unique qui est accompagné par les Logiciels. Vous ne pouvez ni modifier ni tenter de modifier les Logiciels.

- 
- E. Vous ne pouvez céder les Logiciels et en octroyer la licence à une autre partie qu'en rapport avec votre cession du Produit unique qui est accompagné par les Logiciels à cette autre partie. Au moment de cette cession, vous devez céder également toutes les copies, que ce soit sous forme imprimée ou lisible par la machine, de tous les Logiciels ainsi que de la documentation les accompagnant, à la même partie ou détruire les copies non cédées.
- F. Vous ne pouvez retirer aucune marque de droits d'auteur, marque ou autre ni aucune identification de produit des Logiciels et vous devez reproduire et inclure toutes ces notices ou identifications de produit sur toutes les copies des Logiciels.

Vous ne pouvez assembler en sens inverse, compiler en sens inverse ni retracer les Logiciels ni aucune de leurs copies, de façon électronique ou mécanique, en tout ou en partie.

Vous ne pouvez utiliser, copier, modifier, altérer ni céder les Logiciels ni aucune de leurs copies, en tout ou en partie, à l'exception de ce qui est expressément stipulé dans ce contrat.

Si vous cédez la possession de toute copie ou de tout Logiciel à une autre partie, à l'exception de ce qui est autorisé au paragraphe E ci-dessus, votre licence est automatiquement résiliée.

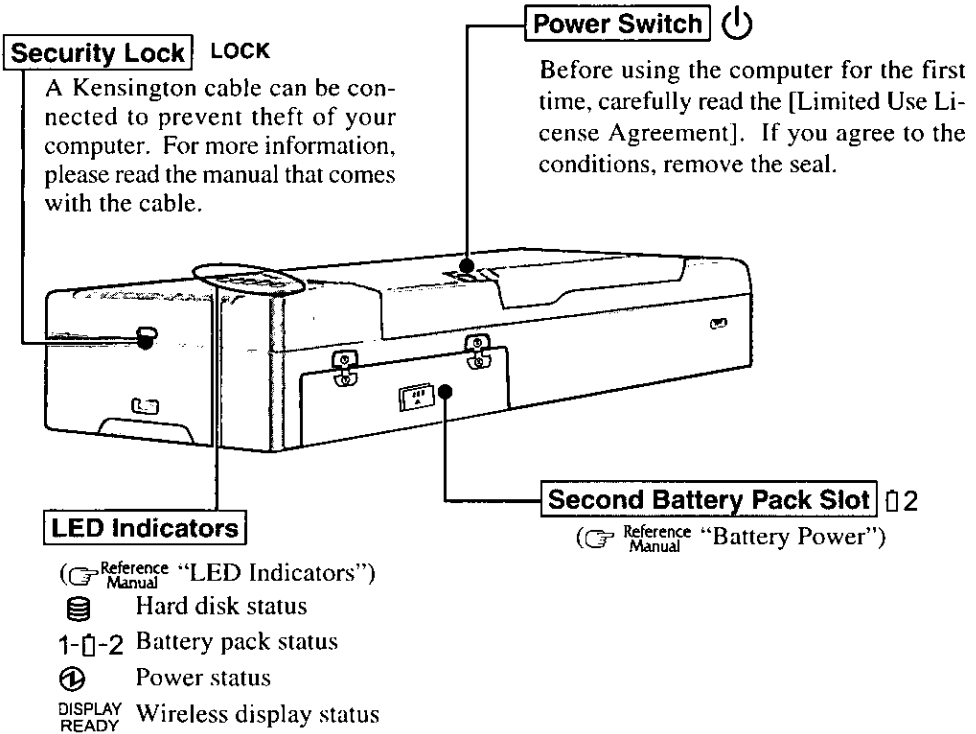
### **Termes, clauses et conditions**

Cette licence n'est effective que pour la durée de possession ou de crédit-bail du Produit, à moins d'une résiliation antérieure. Vous pouvez résilier cette licence à tout moment en détruisant, à vos frais, les Logiciels et la documentation les accompagnant avec toutes leurs copies, sous quelque forme que ce soit. Cette licence sera également résiliée, avec application immédiate, si les conditions de résiliation définies ailleurs dans ce contrat se sont réalisées ou si vous ne respectez pas les termes, clauses et conditions qui y sont contenues. Au moment de la résiliation, vous acceptez de détruire, à vos frais, les Logiciels et la documentation les accompagnant avec toutes leurs copies, sous quelque forme que ce soit.

Vous reconnaissez avoir lu ce contrat, en avoir compris toute la substance et avoir accepté de respecter ses termes, clauses et conditions. Vous reconnaissez en outre qu'ils sont la description complète et exclusive du contrat conclu entre nous, contrat qui remplace et annule toute proposition ou contrat précédent, écrit ou oral, et toute autre communication entre nous, relativement à l'objet du présent contrat.

# Names and Functions of Parts

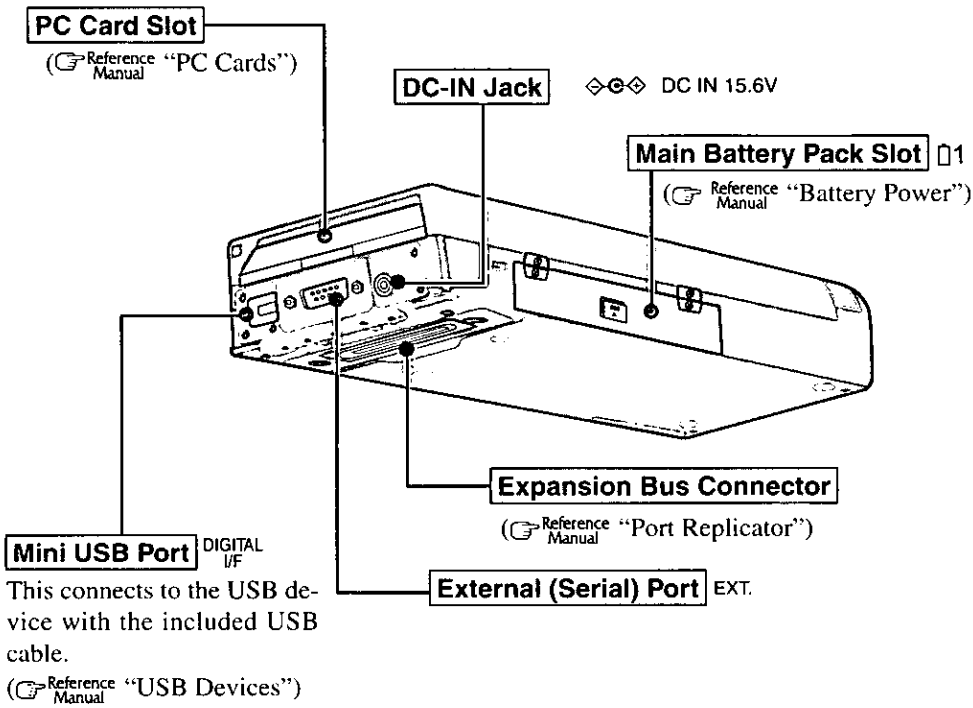
The illustrations shown may differ from the actual physical appearances.



## NOTE

If a battery pack is inserted when the computer is off (under the condition there is no battery pack in the computer), LED indicators will blink five times. You can confirm the remaining battery power by looking at the LED indicators. Since the remaining battery power is displayed for one battery pack, insert battery packs one at a time for confirmation purposes. You can also confirm the remaining battery power in the same way when the computer is on after a battery pack is inserted.

LED Indicators	Remaining battery power
Non-blinking	0%
One indicator-blinking	1% ~ 20%
Two indicators-blinking	21% ~ 50%
Three indicators-blinking	51% ~ 80%
Four indicators-blinking	81% ~ 100%



A lithium ion battery that is recyclable powers the product you have purchased. Please call 1-800-8-BATTERY for information on how to recycle this battery.

L'appareil que vous vous êtes procuré est alimenté par une batterie au lithium-ion. Pour des renseignements sur le recyclage de la batterie, veuillez composer le 1-800-8-BATTERY.

# Specifications

<b>Model No.</b>		CF-07LZ5ZYEM	CF-07LZ5ZYDM	CF-07LZAZYDM
<b>CPU</b>		Mobile Pentium®III Processor 300 MHz		
<b>L1 Cache Memory</b>		32 KB		
<b>L2 (Second) Cache Memory</b>		256 KB		
<b>Memory (Expandable to)</b>		128 MB (256MB)		
<b>Video Memory</b>		8 MB		
<b>External Display</b>		256 / 65536 / 16 M colors (640 × 480 dots / 800 × 600 dots / 1024 × 768 dots)		
<b>Hard Disk Drive</b>		5 GB*1	10 GB*1	
<b>Slots</b>	<b>PC Card Slot</b>	Type I or Type II		
		Allowable current	3.3 V: 400 mA, 5 V: 400 mA	
	<b>RAM Module Slot</b>	144-pin, µ DIMM, 3.3 V, SDRAM, PC 100 Compliant		
<b>Interface</b>	<b>Mini USB Port</b>	4-pin		
	<b>Serial Port</b>	Dsub 9-pin female		
<b>Battery</b>	<b>Battery Pack</b>	Li-ion 7.4 V, 1.7 Ah		
		Operating Time*2	Approx. 4.0 h	
		Charging Time*2	Power On	Approx. 4.0-10.0 h
	Power Off		Approx. 4.0 h	
<b>Clock Battery</b>	Coin type lithium battery 3.0 V			
	Operating Time	Approx. 7 years		
<b>Power Consumption*3</b>		Approx. 13 W*4 / Approx. 30 W*5		
<b>Software</b>	<b>Operating System</b>	Microsoft®Windows® 98 Second Edition (FAT32 File System)	Microsoft® Windows® 2000 Professional Service Pack 2	
	<b>Utility Programs</b>	Setup Utility, DMI Viewer, WirelessDisplay Setup Utility, Wireless LAN Configuration Utility		
<b>Environment</b>		In use	Temperature	5 °C to 35 °C {41 °F to 95 °F}
			Humidity	30% to 80% RH (No condensation)
		Not in use	Temperature	-20 °C to 60 °C {-4 °F to 140 °F}
			Humidity	30% to 90% RH (No condensation)
<b>Physical Dimensions (W × H × D)</b>		200 mm × 91.6 mm × 52 mm {7.9" × 3.6" × 2.0"}		
<b>Weight</b>		Approx. 960 g {Approx. 2.1 lb.}		

\*1 1GB = 10<sup>9</sup> bytes

\*2 A value when two batteries are set. Varies depending on the usage conditions.

\*3 Approx. 0.2 W when the battery pack is fully charged (or not being charged) and the computer is off.

\*4 Rated power consumption.

\*5 Maximum when recharging in the ON state.

# Memo

---

# LIMITED WARRANTY

**For U.S.A.**

## **PANASONIC PERSONAL COMPUTER AND PERIPHERALS LIMITED WARRANTY**

Panasonic Computer Solution Company (referred to as "Panasonic") will repair this product (other than software, which is covered by a separate warranty) with new or rebuilt parts, free of charge in the U.S.A. for three (3) years from the date of original purchase in the event of a defect in materials or workmanship. This warranty includes the AC adaptor but excludes the batteries and all other options and accessories which are covered for a period of one (1) year from the date of purchase.

This warranty is extended solely to the original purchaser. A purchase receipt or other proof of date of original purchase will be required before warranty performance is rendered.

This warranty only covers failures due to defects in materials or workmanship which occur during normal use. It does not cover damage which occurs in shipment or failures which are caused by products not supplied by Panasonic, or failures which result from alteration, accident, misuse, introduction of liquid or other foreign matter into the unit, abuse, neglect, installation, maladjustment of consumer controls, improper maintenance, modification or service by anyone other than a Factory Service Center or authorized Panasonic Service Dealer, or damage that is attributable to acts of God.

### **Limits and Exclusions:**

There are no other express warranties except as listed below.

PANASONIC SHALL NOT BE LIABLE FOR LOSS OF DATA OR OTHER INCIDENTAL OR CONSEQUENTIAL DAMAGES RESULTING FROM THE USE OF THIS PRODUCT, OR ARISING OUT OF ANY BREACH OF THIS WARRANTY. ALL EXPRESS AND IMPLIED WARRANTIES, INCLUDING THE WARRANTIES OF MERCHANTABILITY AND FITNESS FOR A PARTICULAR PURPOSE ARE LIMITED TO THE APPLICABLE WARRANTY PERIOD SET FORTH ABOVE. Some states do not allow the exclusion or limitation of incidental or consequential damages, or limitations on how long an implied warranty lasts, so the above limitations or exclusions may not apply to you.

This limited warranty gives you specific legal rights, and you may also have other rights which vary from state to state. If a problem with your product develops during or after the warranty period, you may contact our representatives at 1-800-LAPTOP5. If the problem is not handled to your satisfaction, then write to the Consumer Affairs Division at the address indicated below.



## SOFTWARE LIMITED WARRANTY

Panasonic Computer Solution Company (referred to as "Panasonic") warrants to you only that the disk(s) or other media on which the Programs are furnished will be free from defects in materials and workmanship under normal use for a period of sixty (60) days from the date of delivery thereof to you, as evidenced by your purchase receipt.

This is the only warranty Panasonic makes to you. Panasonic does not warrant that the functions contained in the Programs will meet your requirements or that the operation of the Programs will be uninterrupted or error free.

Panasonic's entire liability, and your exclusive remedy under this warranty shall be limited to the replacement, in the United States, of any defective disk or other media which is returned to Panasonic's Authorized Service Center, together with a copy of the purchase receipt, within the aforesaid warranty period.

Anything in the foregoing to the contrary notwithstanding, Panasonic shall have no obligation for any defects in the disk(s) or other media on which the Programs are furnished resulting from your storage thereof, or for defects that have been caused by operation of the disk(s) or other media otherwise than on the Product or in environmental conditions other than those specified by Panasonic by alteration, accident, misuse, abuse, neglect, mishandling, misapplication, installation, maladjustment of consumer controls, improper maintenance, modification of damage that is attributable to acts of God. In addition, Panasonic shall have no obligation for any defects in the disk(s) or other media if you have modified, or attempted to modify any Program.

DURATION OF IMPLIED WARRANTIES, IF ANY, IS LIMITED TO SIXTY (60) DAYS.

PANASONIC ASSUMES NO RISK OF AND SHALL NOT IN ANY CASE BE LIABLE FOR ANY DAMAGES, INCLUDING, WITHOUT LIMITATION, ANY SPECIAL, INCIDENTAL, CONSEQUENTIAL, OR PUNITIVE DAMAGES ARISING FROM BREACH OF WARRANTY OR CONTRACT, NEGLIGENCE OR ANY OTHER LEGAL THEORY, INCLUDING, WITHOUT LIMITATION LOSS OF GOODWILL, PROFITS OR REVENUE, LOSS OF USE OF THE PROGRAMS OR PRODUCTS OR ANY ASSOCIATED EQUIPMENT, COST OF CAPITAL, COST OF ANY SUBSTITUTE EQUIPMENT, FACILITIES, SERVICES, DOWNTIME COSTS, OR CLAIMS OF ANY PARTY DEALING WITH YOU FOR SUCH DAMAGES.

Some states do not allow the exclusion or limitation of incidental or consequential damages, or limitations on how long an implied warranty lasts, so the above limitations or exclusions may not apply to you.

This limited warranty gives you specific legal rights, and you may also have other rights which vary from state to state.

This Limited Warranty will be governed by the laws the State of New York, without regard to its conflict-of-laws rules.

\* \* \*

To obtain service or technical assistance within the continental U.S.A. and Alaska.

**DIAL TOLL FREE: 1-800-LAPTOP5**

Correspondence requesting product information should be sent to:

Panasonic Computer Solution Company

50 Meadowlands Parkway, Panazip 2F-5, Secaucus, NJ 07094

# LIMITED WARRANTY

## For Canada

### PANASONIC COMPUTER AND PERIPHERALS LIMITED WARRANTY

**Coverage** – Panasonic Canada Inc. ("PCI") warrants to you, the first end user customer, this computer product (excluding software media), when purchased from PCI or from a PCI authorized reseller, to be free from defects in materials and workmanship under normal use, subject to the terms set forth below, during the period of warranty coverage specified.

Scope of Coverage	Period of Coverage	Type of Failure Coverage
Whole Product (except Batteries), AC adaptor and CD-ROM (if factory installed)	Three (3) Years from Date of Original End User Customer Purchase	Defective Materials or Workmanship
Batteries, CD-ROM (unless factory installed), Port Replicator, Extra Memory Modules and all other Peripherals, Options and Accessories	One (1) Year from Date of Original End User Customer Purchase	Defective Materials or Workmanship

**Remedy** – In the event of a warranty claim, contact PCI's representatives within the applicable warranty period, identifying the nature of the defect claimed, at 1-800-668-8386 between 9:00 A.M. and 5:00 P.M., Eastern Time Zone, Mon. – Fri. (excluding holidays) for instructions on how to obtain service. A purchase receipt or other proof of date of original purchase is required before warranty service is performed. Defective parts covered by this Limited Warranty will be repaired or replaced with new or comparable rebuilt parts on an exchange basis. Warranty replacement or repair is subject to the terms of this Limited Warranty for the balance of the original period of warranty coverage.

**No Coverage** – This Limited Warranty does not cover products purchased outside Canada. Neither does it cover damage to, failure of, or defects in a product or accessory through mishandling, improper installation, abnormal use, misuse, neglect, accident, introduction of liquid or other foreign matter into the product, alteration or servicing by anyone not authorized by PCI, or act of God.

#### **IF YOU SHIP THE PRODUCT FOR WARRANTY SERVICE**

Carefully pack the product, preferably in the original carton. Include details of defect claimed and proof of date of original purchase. No liability is assumed for loss or damage to the product while in transit, if you chose your own transportation carrier.

## **SOFTWARE MEDIA LIMITED WARRANTY**

**Coverage** – Panasonic Canada Inc. (“PCI”) warrants to you, the first end user customer, that the disk(s) or other media on which software program(s) is/are supplied will be free from defects in materials and workmanship under normal use in Canada for a period of sixty (60) days from date of receipt as evidenced by your purchase receipt for your Panasonic Computer product.

THIS IS THE ONLY WARRANTY THAT PCI MAKES RESPECTING THE SOFTWARE MEDIA. PCI does not warrant the software. Please refer to the software licensor’s written warranty (accompanying the copy of the software) for any software warranty claim.

**Claim Procedure** – In the event of a defect in material or workmanship in the media during the sixty (60) day warranty period, and you return it, transportation costs prepaid, to Panasonic Canada Inc., Computer Products Marketing, at the above address, within the warranty period, together with a copy of your purchase receipt, and an explanation of the suspected defect, PCI will replace in Canada the defective disk(s) or other media.

**Remedy** – PCI’s entire liability, and your only remedy for any breach of this software media warranty is limited to replacement of the media only. It does not cover any other damages, including, but not limited to, loss of use or profit loss, or special, indirect or consequential damages, or other claims, whether or not of similar character.

**No Coverage** – This limited warranty does not apply if the disk(s) or other media has been used in other than a Panasonic product, or in environmental conditions other than those specified by PCI or the manufacturer, or if subjected to misuse, neglect, mishandling, modification or attempted modification of the program, or if damaged by accident or act of God. PCI is not responsible for damage to or loss of any program, data or removable storage media.

### **GENERAL**

**NO OTHER WARRANTIES** – PCI DISCLAIMS ALL OTHER WARRANTIES, EITHER EXPRESS OR IMPLIED, INCLUDING, BUT NOT LIMITED TO, IMPLIED WARRANTIES OF MERCHANTABILITY AND FITNESS FOR A PARTICULAR PURPOSE, WITH RESPECT TO THE SOFTWARE, SOFTWARE MEDIA, COMPUTER PRODUCT, OPTIONS AND ACCESSORIES.

**NO LIABILITY FOR CONSEQUENTIAL DAMAGES** – IN NO EVENT SHALL PCI BE LIABLE FOR ANY SPECIAL, INDIRECT OR CONSEQUENTIAL DAMAGES ARISING FROM ANY BREACH OF THE LIMITED WARRANTIES SET OUT IN THIS DOCUMENT, OR FROM THE USE OF THE COMPUTER PRODUCT, INCLUDING, WITHOUT LIMITATION, LOSS OF DATA, BUSINESS, PROFIT OR GOODWILL.

**IN ANY EVENT, PCI’S MAXIMUM LIABILITY FOR ANY BREACH SHALL NOT EXCEED THE AMOUNT ACTUALLY PAID BY YOU FOR THE COMPUTER PRODUCT.**

**NO ACTION, REGARDLESS OF ITS BASIS, MAY BE BEGUN AGAINST PCI MORE THAN TWO (2) YEARS AFTER THE CAUSE OF ACTION AROSE.**

**Statutory Warranties** – Some jurisdictions do not allow these limitations or exclusions, so they may not apply to you.



As an ENERGY STAR® Partner, Matsushita Electric Industrial Co., Ltd. has determined that this product meets the ENERGY STAR® guidelines for energy efficiency.

**Outline of the International ENERGY STAR® Office  
Equipment Program**

The international ENERGY STAR® Office Equipment Program is an international program that promotes energy saving through the use of computers and other office equipment. The program backs the development and dissemination of products with functions that effectively reduce energy consumption. It is an open system in which business proprietors can participate voluntarily. The targeted products are office equipment such as computers, displays, printers, facsimiles, and copiers. Their standards and logos are uniform among participating nations.

---

**Panasonic Computer Solution Company**

50 Meadowlands Parkway, Panazip 2F-5,  
Secaucus, NJ 07094

**Panasonic Canada Inc.**

5770 Ambler Drive Mississauga,  
Ontario L4W 2T3

© 2002 Matsushita Electric Industrial Co., LTD. All Rights Reserved.

Printed in Japan

FJ0502-0  
DFQX5331ZA

