

ACCESSORY KIT INSTALLATION MANUAL

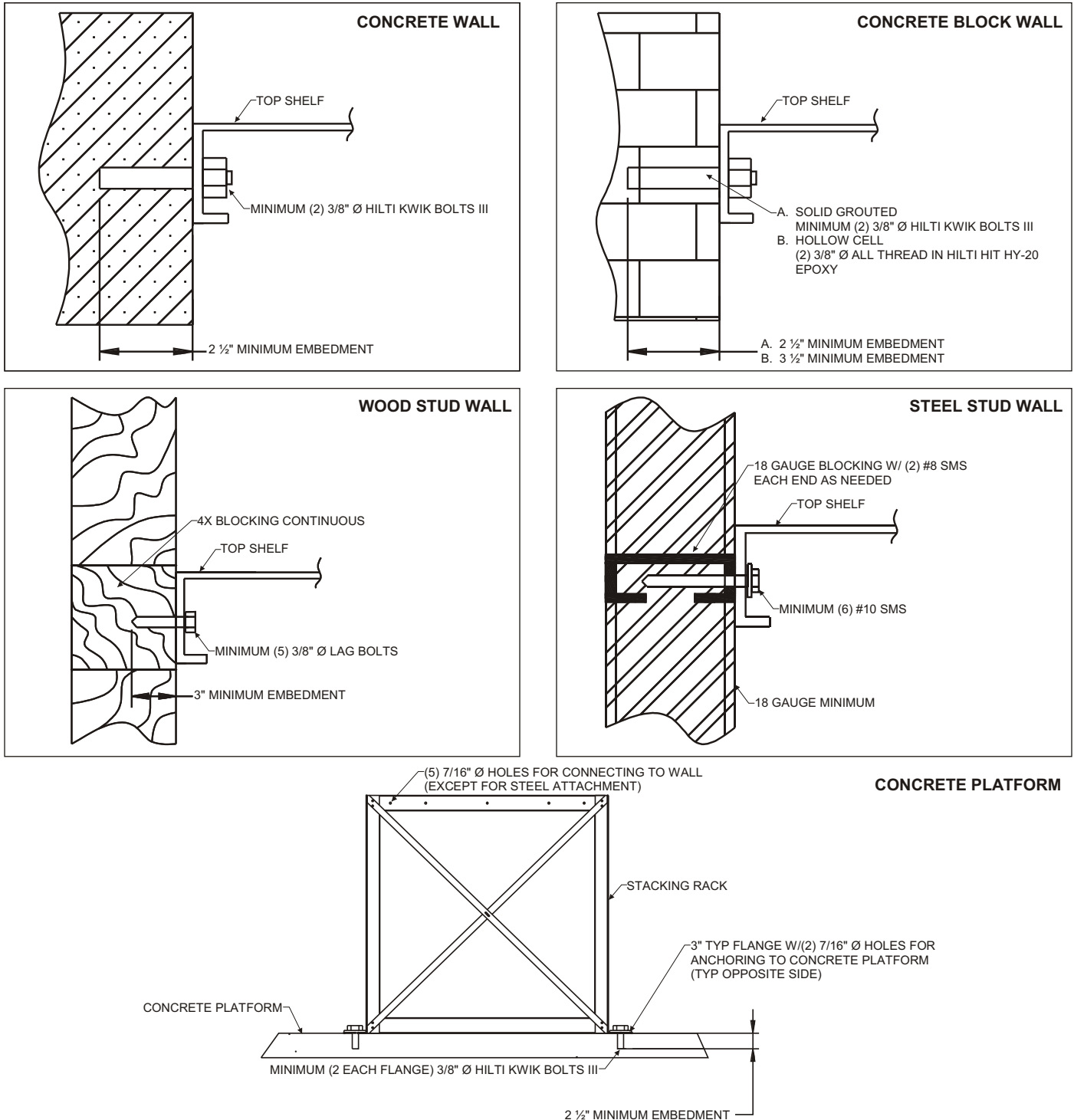
S1-HDSTACK01 - STACKING RACK

FOR USE WITH MODELS TCHD / YCHD

INSTALLATION

1. This kit is designed to stack two horizontal discharge units. It will handle both sizes of horizontal discharge unit foot print.
2. The stacking kit must be assembled and anchored securely before any horizontal discharge units are placed on the stacking frame.
3. Horizontal discharge units should be mounted so that the front of the units are closest to the front edge of the stacking frame. This will allow proper air circulation around the back of the unit.
4. See hardware details for proper location of bolts, nuts, and washers.

NOTE - ALL ANCHORING HARDWARE IS FIELD SUPPLIED



ITEM	DESCRIPTION	QTY
1	Channel Assembly	2
2	Bottom Shelf	2
3	Corner Post	4
4	Top Shelf	1
5	Side Brace	4
6	Back Brace	2
Not Shown	3/8" X 1" Hex Head Bolt	64
Not Shown	3/8" Flat Washer	79
Not Shown	3/8" Lock Nut	2
Not Shown	Spacer Wall	2

